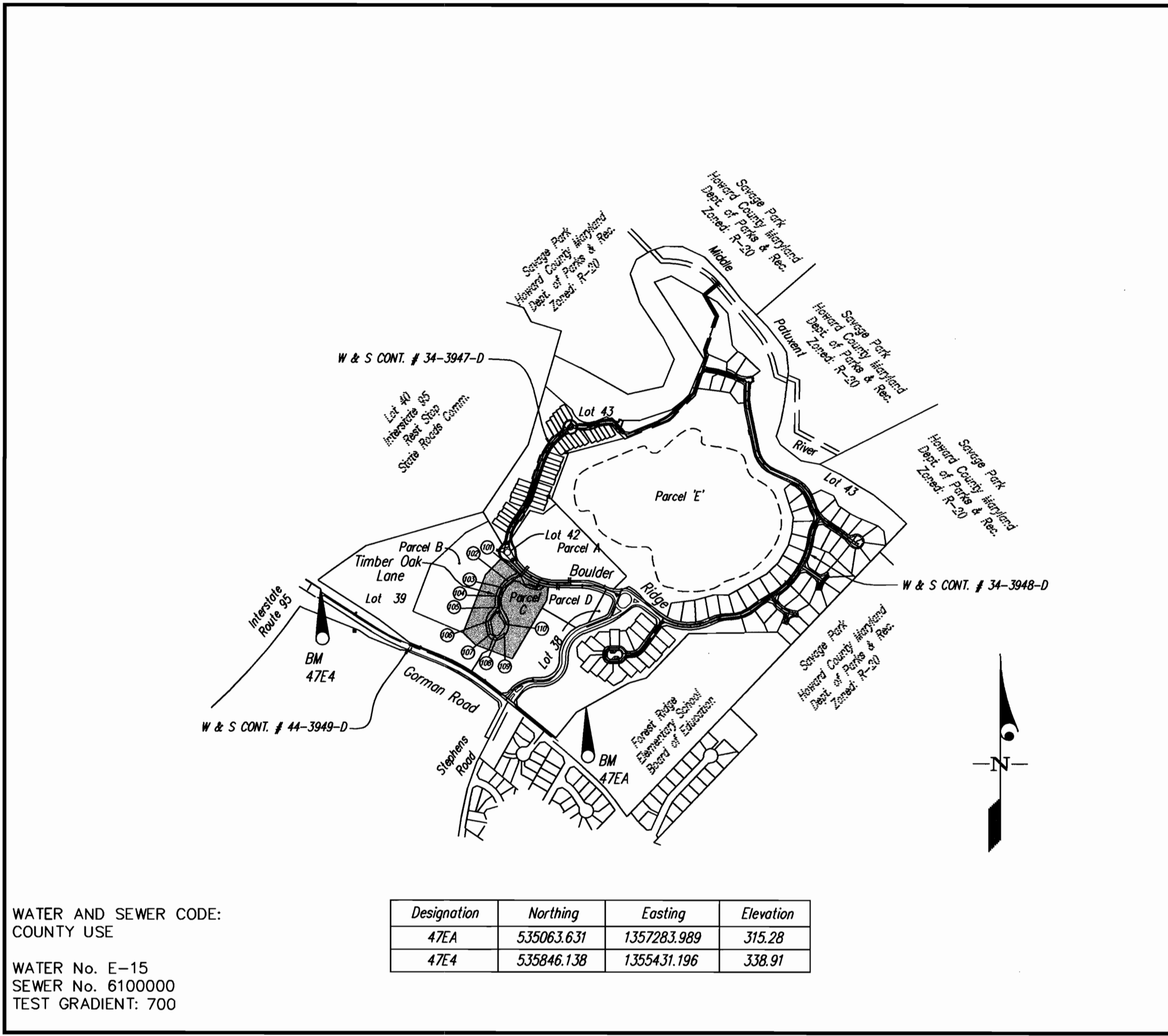


**QUANTITIES**

ITEMS	QUANTITIES ESTIMATED	AS-BUILT		
		QUANTITIES	TYPE	MANUFACTURER/SUPPLIER
8" WATER	842 L.F.			
8" x 8" T.	1			
8" 1/8 H.B.	8			
8" 1/16 H.B.	2			
8" 1/32 H.B.	1			
8" VALVE	3			
8" CAP	1			
8" x 6" F.H.T.	1			
FIRE HYDRANT	1			
4" WATER	64 L.F.			
4" CAP	1			
4" 1/8 H.B.	2			
1" WHC	1143 L.F.			
8" SEWER	875 L.F.			
STD. MANHOLES	11			
DROP MANHOLE 'A'	1			
4" SHC	833 L.F.			

NAME OF UTILITY CONTRACTOR:

<input type="checkbox"/> SURVEY AND DRAFTING DIV.	<input type="checkbox"/> CHECKBOX: AS-BUILT DATE:
---	---



VICINITY MAP  
SCALE: 1"=600'

CONTRACT No. 34-4010 D  
STONE LAKE - LOTS C-1 THOUGH C-39  
HOWARD COUNTY, MARYLAND  
DEPARTMENT OF PUBLIC WORKS

TYPE OF BUILDING	SINGLE FAMILY
NUMBER OF UNITS	36
NUMBER OF S.H.C.'s	36
NUMBER OF W.H.C.'s	36
DRAINAGE AREA	MIDDLE PATUXENT
TREATMENT PLANT	LITTLE PATUXENT WATER RECLAMATION PLANT

GENERAL NOTES

- PART I
- Approximate location of existing mains are shown. The contractor shall take all necessary precautions to protect existing mains and services and maintain uninterrupted supply. Any damage incurred shall be repaired immediately to the satisfaction of the Engineer at the Contractor's expense.
  - All horizontal controls are based on Maryland State Coordinates [North American Datum 1983 (NAD '83)].
  - All vertical controls are based on U.S.G.S. data.
  - All pipe elevations shown are invert elevations.
  - Clear all utilities by a minimum of 6". Clear all poles by 2'-0" minimum or tunnel as required. The owner has contacted the utility companies and has made arrangements for bracing of poles as shown on the drawings. In the event the contractor's work requires the bracing of additional poles or damages shall be deducted from money owed the contractor. The contractor shall coordinate with the utility companies to schedule the bracing of the poles.
  - For details not shown on the drawings, and for materials and construction methods use Howard County Design Manual, Volume IV, Standard Specifications and Detail for Construction (Latest Edition). The contractor shall have a copy of Volume IV on the job.
  - Where test pits have been made on existing utilities, they are noted by the symbol  $\odot$  at the location of the test pit. A note or notes containing the results of the test pit or pits is included on the drawings. Existing utilities in the vicinity of the proposed work for which test pits have not been dug shall be located by the contractor two weeks in advance of construction operations at his own expense.
  - Contractor shall notify the following utility companies or agencies at least (5) working days before starting work shown on these plans:

State Highway Administration	410-531-5533
BCE Contractor Services	410-850-4820
BCE Under Ground Damage Control	410-291-4607
Miss Utility	1-800-257-7777
Colonial Pipeline Co.	410-549-4120
Howard County Department of Public Works Bureau of Utilities	313-4900
Verizon	1-800-446-5266

- PART II - WATER
- All water mains to be D.I.P. Class 52 unless otherwise noted.
  - Tops of all water mains to have a minimum of 3-1/2' cover unless otherwise noted.
  - Valves adjacent to tees shall be strapped to tees.
  - All fittings shall be buttressed or anchored with concrete in accordance with the Standard Details unless otherwise provided for on the drawings.
  - Fire hydrants shall be set to the bury line elevations shown on the drawings. All fire hydrants shall be restrained and buttressed with concrete in accordance with the Standard Details. Soil around the fire hydrant shall be compacted in accordance with Section 1000 and 1005 of the Standard Specifications.
  - The contractor shall not operate any water main valves on the existing water system.
  - All water house connections shall be for inside meter setting unless otherwise noted on plans or in specifications.
  - For sprinkler system for all townhomes or multi-family dwelling units should have a minimum of 1' connection with a 3/4" meter.

- PART III - SEWER
- All sewer mains shall be DIP and P.V.C. unless otherwise noted.
  - All manholes shall be 4' - 0" inside diameter unless otherwise noted.
  - Force mains shall be D.I.P. only.
  - Manholes shown with 12" and 16" walls are for brick manholes only.
  - Manholes designated W.T. in plan and profile shall have watertight frame and covers, Standard Detail G5.52. Where watertight frame and cover is used, set top of frame 1'-6" above finished grade unless otherwise noted on drawings.
  - House(s) with the symbol "C.N.S." indicates that cellar cannot be served.

Sediment Control Measures will be implemented in accordance with Section 219 of the Specifications & with drawings F-02-30.

REVIEWED FOR HOWARD SOIL CONSERVATION DISTRICT AND MEETS TECHNICAL REQUIREMENT

Signature: John R. Robertson 3/15/02  
DATE

J.S.D.A. NATURAL RESOURCES CONSERVATION SERVICE

THIS DEVELOPMENT PLAN IS APPROVED FOR SOIL EROSION AND SEDIMENT CONTROL BY THE HOWARD SOIL CONSERVATION DISTRICT.

APPROVED: Jim Murray 3/15/02  
DATE

DEPARTMENT OF PUBLIC WORKS  
HOWARD COUNTY, MARYLAND

DEPARTMENT OF PLANNING AND ZONING  
HOWARD COUNTY, MARYLAND

GLW GUTSCHICK LITTLE & WEBER, P.A.  
CIVIL ENGINEERS, LAND SURVEYORS, LAND PLANNERS, LANDSCAPE ARCHITECTS  
3909 NATIONAL DRIVE - SUITE 250 - BURTONSVILLE OFFICE PARK  
BURTONSVILLE, MARYLAND 20886  
TEL: 301-421-4024 BALT: 410-680-1820 DC/VA: 301-989-2524 FAX: 301-421-4196



DES: WLB/DEV	
DRN: WLB/JAU	
CHK: CKG	
DATE: 3/02	
BY NO	
REVISION	
DATE	

TITLE SHEET  
SCALE: AS SHOWN

600' SCALE MAP NO. 47 BLOCK NO. 9/10

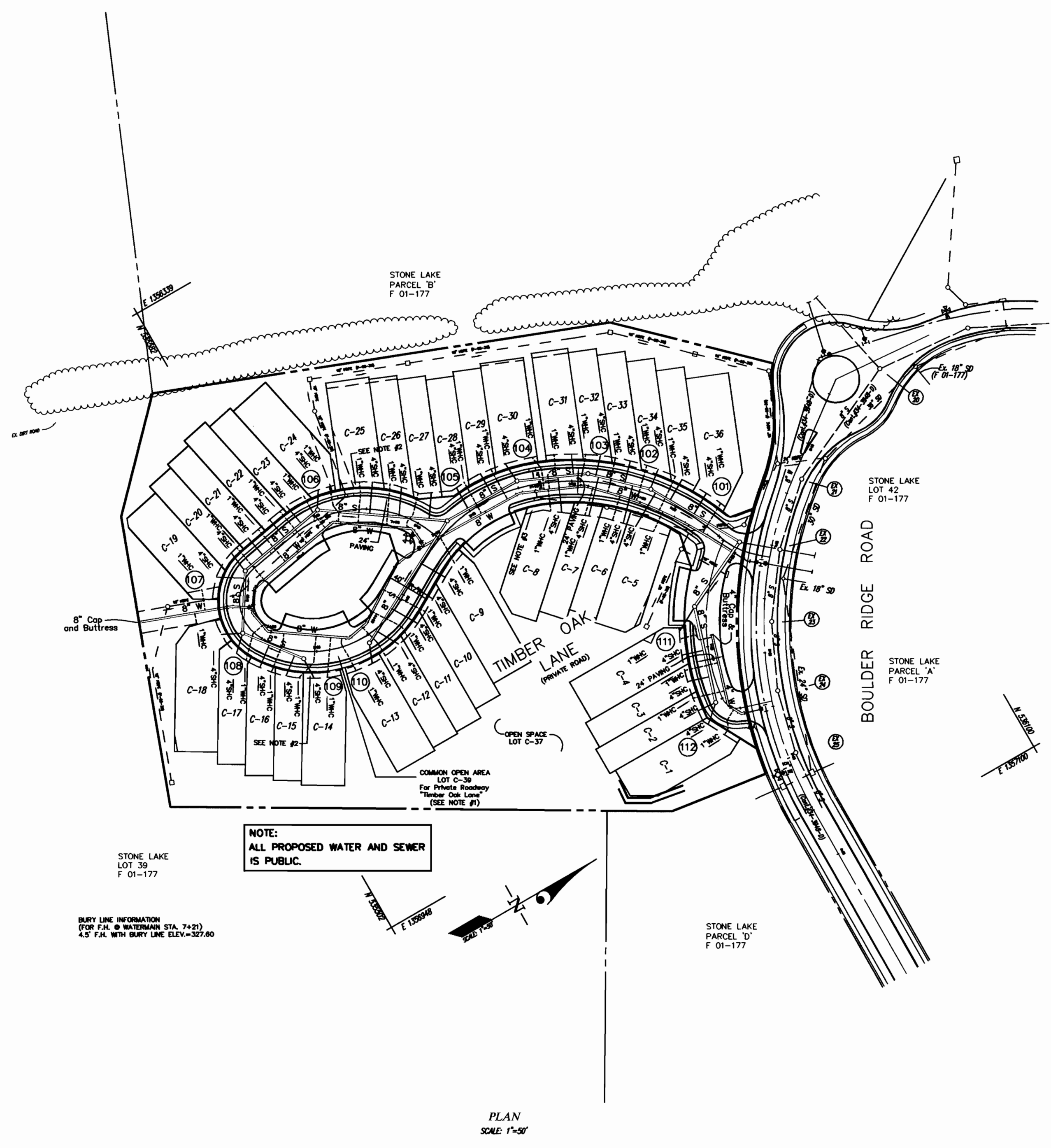
STONE LAKE - Lots C1 through C-39  
A Resubdivision of Parcel C  
Howard County, Maryland.  
Election District No. 6  
CONTRACT No. 34-4010 D

GLW FILE No. 01075

SCALE AS SHOWN

SHEET 1 OF 3

U:\CAD\DWG\01075\01075.DWG 03/15/02 10:00:06 AM EST



SEWER MANHOLE LOCATIONS		
MANHOLE NO.	STATION	OFFSET
101	0+29.74	6.64' RIGHT
102	1+27.36	5.32' RIGHT
103	1+85.60	7.18' RIGHT
104	2+49.50	6.51' RIGHT
105	3+21.53	6.30' RIGHT
106	7+06.64	7.93' LEFT
107	6+21.95	4.34' LEFT
108	5+68.20	7.80' LEFT
109	5+11.59	7.01' LEFT
110	4+52.47	7.00' LEFT
111	1+13.47	11.01' LEFT
112	0+49.66	7.02' LEFT

LOT FRONTAGE	
LOT No.	DISTANCE
1	36.10'
2	26.22'
3	26.91'
4	32.88'
5	40.26'
6	26.12'
7	26.72'
8	44.10'
9	26.92', 10.96'
10	29.96'
11	28.27'
12	26.39'
13	34.04'
14	34.11'
15	26.42'
16	24.31'
17	24.31'
18	23.00'
19	27.85'
20	23.34', 3.12'
21	26.01'
22	18.36', 7.67'
23	26.61'
24	23.13'
25	40.51'
26	28.47'
27	4.67', 22.05'
28	10.84', 16.85'
29	27.40'
30	38.44', 1.93'
31	34.24'
32	26.81'
33	27.87'
34	29.55'
35	22.00'
36	34.04'

FITTING LOCATIONS FOR WATER MAIN			
FITTING TYPE	WATER MAIN STATION	STATION AND OFFSET	
4" WATER - TIMBER OAK LANE			
1/8 H.B.	0+03	0+41.57	0.20' RT.
1/8 H.B.	0+14	0+30.00	5.34' LT.
8" WATER - TIMBER OAK LANE			
P.C. 290' C.R.	0+31	0+60.53	6.89' LT.
P.C. 290' C.R.	0+55	0+84.89	9.30' LT.
P.C. 290' C.R.	0+66	0+96.79	9.92' LT.
P.C. 290' C.R.	1+23	1+56.54	8.65' LT.
1/8 H.B.	1+53	1+87.67	4.22' LT.
1/8 H.B.	2+14	2+50.50	5.01' RT.
8"x 8" TEE	3+16=7+35	3+52.29	7.61' RT.
1/16 H.B.	3+46	3+78.72	19.93' RT.
1/16 H.B.	4+07	4+45.47	9.26' RT.
1/8 H.B.	4+28	4+66.69	5.36' RT.
1/8 H.B.	5+03	5+51.01	8.42' RT.
1/8 H.B.	5+25	5+79.66	9.62' RT.
8"x 8" TEE	5+30	5+86.00	11.58' RT.
1/8 H.B.	5+48	6+11.52	11.56' RT.
1/8 H.B.	6+43	7+16.25	7.79' RT.
1/8 H.B.	7+16	7+97.03	7.41' RT.
8" WATER - BETWEEN LOTS C-18 & C-19			
1/32 H.B.	0+20	5+90.58	8.08' LT.

- NOTE:
- LOT C-39 IS ALSO A SEWER, WATER AND UTILITY EASEMENT (PUBLIC).
  - 5' TREE MAINTENANCE & UTILITY EASEMENT (PRIVATE) AND A 5' WATER, SEWER & UTILITY EASEMENT (PUBLIC).
  - PRIVATE STORM DRAIN AND TREE MAINTENANCE, PUBLIC S.H.C., W.H.C., AND UTILITY EASEMENT.

NOTE:  
ALL PROPOSED WATER AND SEWER IS PUBLIC.

BURY LINE INFORMATION  
(FOR F.I.A. @ WATERMANN STA. 7+21)  
4.5" P.I. WITH BURY LINE ELEV.=357.60

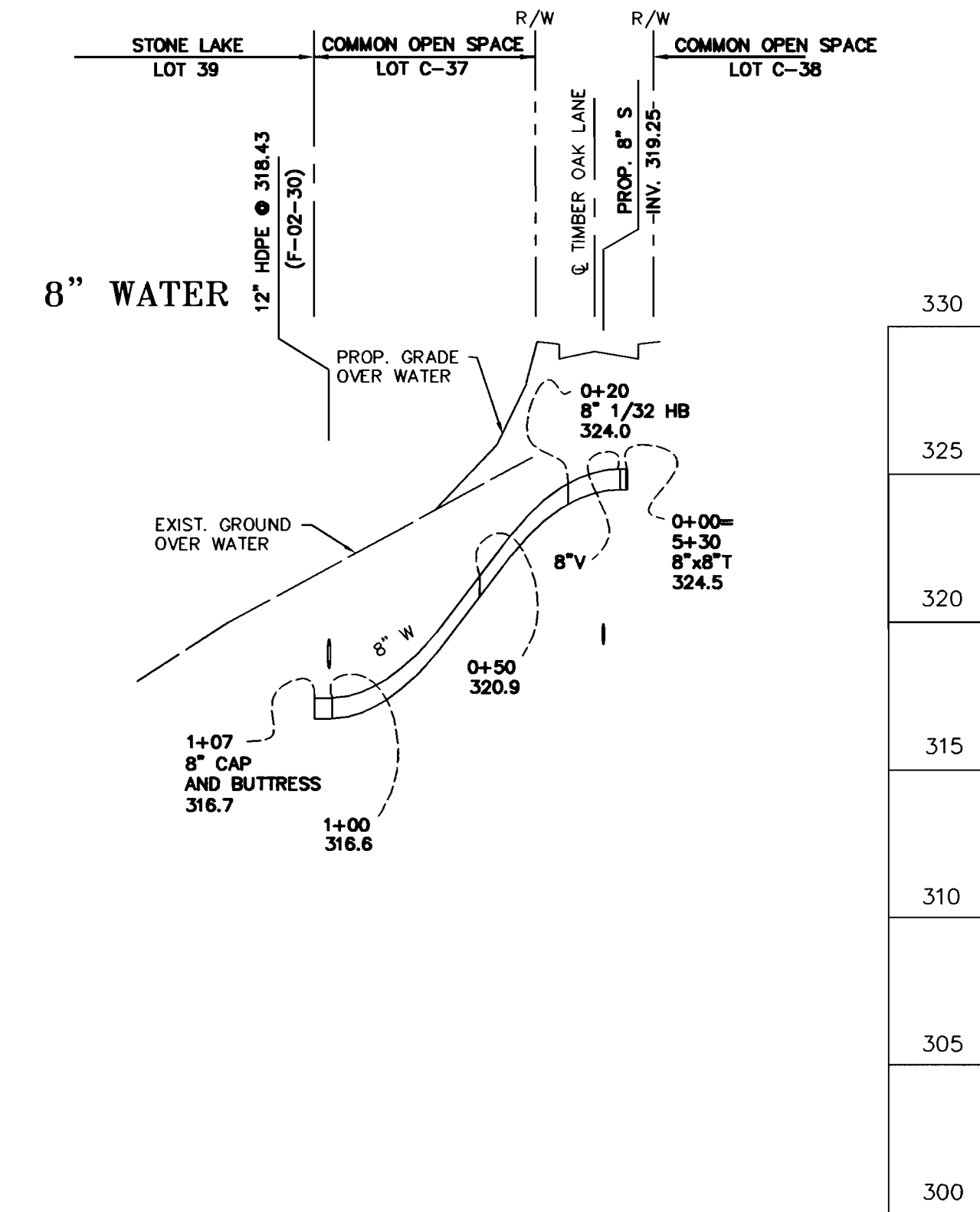
PLAN  
SCALE: 1"=50'

GLW FILE 01075  
01075WS.DWG

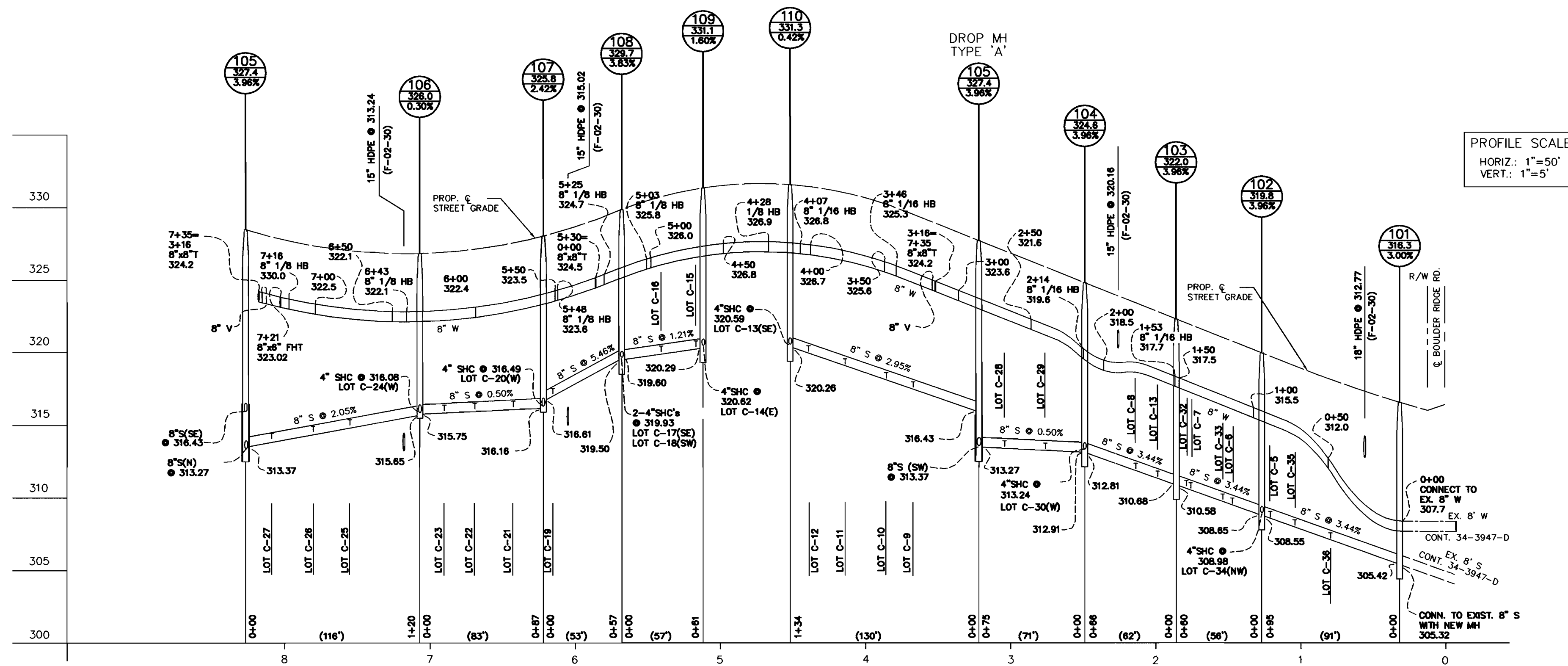
DEPARTMENT OF PUBLIC WORKS HOWARD COUNTY, MARYLAND <i>Ruth Benja</i> CHIEF, BUREAU OF UTILITIES	DEPARTMENT OF PLANNING AND ZONING HOWARD COUNTY, MARYLAND <i>John DeWitt</i> CHIEF, DEVELOPMENT ENGINEERING DIVISION	GLW GUTSCHICK LITTLE & WEBER, P.A. CIVIL ENGINEERS, LAND SURVEYORS, LAND PLANNERS, LANDSCAPE ARCHITECTS 3909 NATIONAL DRIVE - SUITE 250 - BURTONSVILLE OFFICE PARK BURTONSVILLE, MARYLAND 20866 TEL: 301-421-4024 BAL: 410-880-1820 DC/VA: 301-989-2524 FAX: 301-421-4186	DES: WLB/DEV				WATER and SEWER EXTENSION PLAN	STONE LAKE - Lots C1 through C-39 A Resubdivision of Parcel C Howard County, Maryland. Election District No. 6 CONTRACT No. 34-4010 D	SCALE
			DRN: WLB/DEV						1"=50'
			CHK: CKG						SHEET
			DATE: 3/02	BY	NO	REVISION	DATE	600' SCALE MAP NO. 47 BLOCK NO.	2 OF 3

C:\075ws.dwg 2-16-02 2:30:48 PM EST

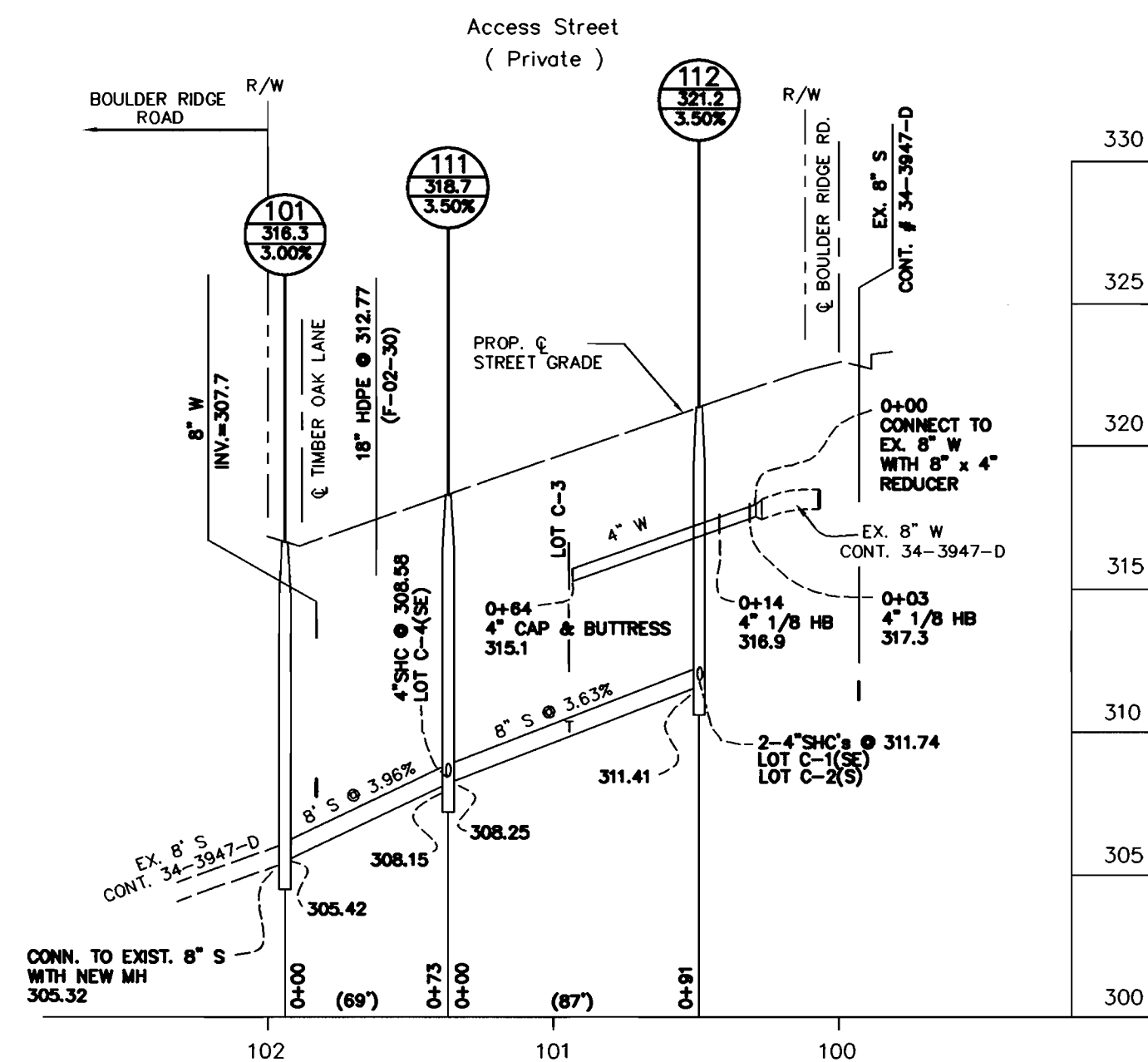
LOT #	STATION	FROM	SLOPE	INV. @	INV. @	MIN.
		OF MH	OF S.H.C.	MAIN/MH	EASEMENT	CELLAR
1	0+112		2.00%	311.74	312.13	316.16
2	0+112		2.00%	311.74	312.06	315.80
3	0+42	111	2.00%	309.87	310.28	314.03
4	0+111		2.00%	308.58	309.00	313.38
5	0+90	101	2.00%	308.62	309.20	313.16
6	0+19	102	2.00%	309.40	309.97	313.80
7	0+50	102	2.00%	310.47	311.07	314.89
8	0+28	103	2.00%	311.74	312.31	316.60
9	0+45	105	2.00%	317.87	318.41	322.47
10	0+65	105	2.00%	318.46	318.94	322.84
11	0+93	105	2.00%	319.29	319.85	323.76
12	1+17	105	2.00%	319.99	320.55	324.24
13	0+110		2.00%	320.59	320.94	324.81
14	0+109		2.00%	320.62	321.00	324.90
15	0+53	108	2.00%	320.39	320.79	324.49
16	0+26	108	2.00%	320.06	320.51	324.52
17	0+108		2.00%	319.93	320.28	324.17
18	0+108		2.00%	319.93	320.29	324.69
19	0+07	107	2.00%	317.10	317.61	321.64
20	0+107		2.00%	316.49	316.87	320.57
21	0+65	106	2.00%	316.24	316.66	320.30
22	0+38	106	2.00%	316.10	316.52	320.30
23	0+17	106	2.00%	316.00	316.41	320.20
24	0+106		2.00%	316.08	316.41	320.44
25	0+72	105	2.00%	314.88	315.47	319.44
26	0+46	105	2.00%	314.34	314.88	318.74
27	0+18	105	2.00%	313.77	314.25	318.13
28	0+55	104	2.00%	314.17	314.61	318.43
29	0+27	104	2.00%	313.59	314.03	317.81
30	0+104		2.00%	313.24	313.59	317.46
31	0+13	103	2.00%	311.23	311.61	315.41
32	0+52	102	2.00%	310.54	310.90	314.66
33	0+23	102	2.00%	309.37	309.77	313.53
34	0+102		2.00%	308.98	309.32	313.17
35	0+72	101	2.00%	308.00	308.44	312.40
36	0+48	101	2.00%	307.17	307.62	311.83



TIMBER OAK LANE



TIMBER OAK LANE

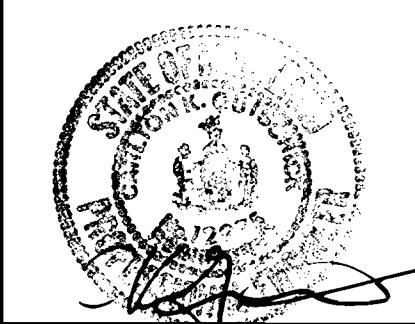


01075ws2.dwg 2-19-02 2:29:23 pm EST

GLW FILE 01075  
01075WS2.dwg

DEPARTMENT OF PUBLIC WORKS HOWARD COUNTY, MARYLAND  <i>Robert Benin</i> CHIEF, BUREAU OF UTILITIES 3-15-02 DATE	DEPARTMENT OF PLANNING AND ZONING HOWARD COUNTY, MARYLAND  <i>John D. ...</i> CHIEF, DEVELOPMENT ENGINEERING DIVISION 3/26/02 DATE
--	---

**GLW GUTSCHICK LITTLE & WEBER, P.A.**  
CIVIL ENGINEERS, LAND SURVEYORS, LAND PLANNERS, LANDSCAPE ARCHITECTS  
3909 NATIONAL DRIVE - SUITE 250 - BURTONSVILLE OFFICE PARK  
BURTONSVILLE, MARYLAND 20866  
TEL: 301-421-4024 BALT: 410-880-1820 DC/VA: 301-989-2524 FAX: 301-421-4186



DES: WLB/DEV	
DRN: WLB/DEV	
CHK: CKG	
DATE: 3/02	
BY	NO
REVISION	
DATE	

WATER and SEWER EXTENSION  
PROFILES

600' SCALE MAP NO. 47 BLOCK NO. 9/10

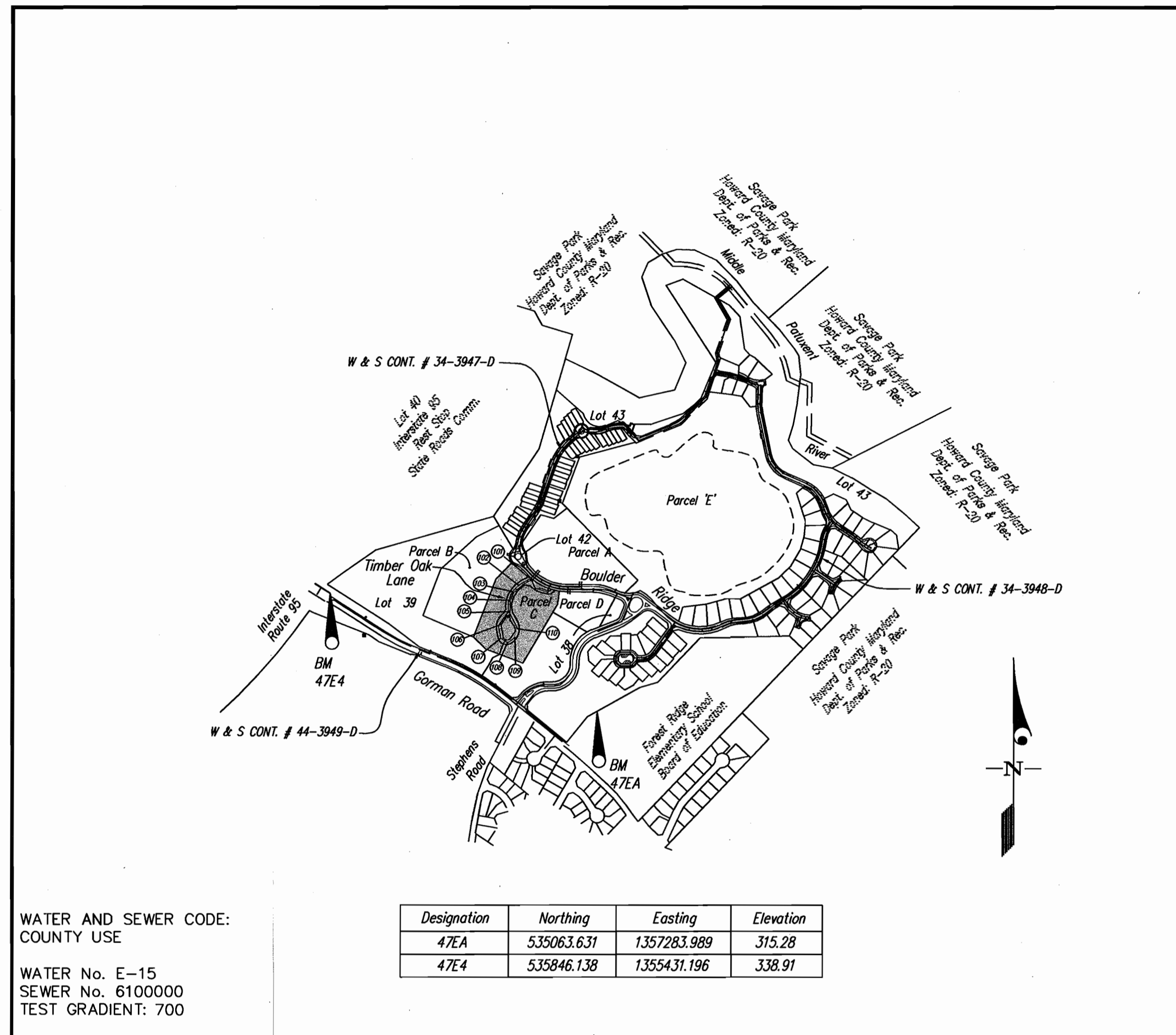
STONE LAKE - Lots C1 through C-39  
A Resubdivision of Parcel C  
Howard County, Maryland.  
Election District No. 6  
CONTRACT No. 34-4010 D

SCALE AS SHOWN  
SHEET 3 OF 3

ITEMS	QUANTITIES ESTIMATED	AS-BUILT		
		QUANTITIES	TYPE	MANUFACTURER/SUPPLIER
8" WATER	842 L.F.	832 L.F.	DIP CLER	GRIFFIN PIPE
8" x 8" T.	1	2 EA.		U.S. PIPE / BRS
8" 1/8 H.B.	8	7 EA.		" "
8" 1/16 H.B.	2	2 EA.		" "
8" 1/32 H.B.	1	1 EA.		" "
8" VALVE	3	3 EA.		MUELLER / BRS
8" CAP	1	0		
8" x 6" F.H.T.	1	1 EA.		U.S. PIPE / BRS
FIRE HYDRANT	1	1 EA.		MUELLER / BRS
4" WATER	64 L.F.	90 L.F.		GRIFFIN PIPE
4" CAP	1	1 EA.		U.S. PIPE / BRS
4" 1/8 H.B.	2	3 EA.		" "
1" WHC	1143 L.F.	754 L.F.		READING TUBE / BRS
6" WATER		7 L.F.		GRIFFIN PIPE
8" SEWER	875 L.F.	875 L.F.		NATIONAL PLASTICS / BRS
STD. MANHOLES	11	11 EA.		ATLANTIC CONCRETE
DROP MANHOLE 'A'	1	1 EA.		" "
4" SHC	833 L.F.	833 L.F.		NATIONAL PLASTICS / BRS
6" VALVE	1	1 EA.		MUELLER / BRS

NAME OF UTILITY CONTRACTOR: C.C.S.

SURVEY AND CHECKBOX: DRAFTING DIV. AS-BUILT DATE: 1/22/03



WATER AND SEWER CODE: COUNTY USE  
 WATER No. E-15  
 SEWER No. 6100000  
 TEST GRADIENT: 700

Designation	Northing	Easting	Elevation
47EA	535063.631	1357283.989	315.28
47E4	535846.138	1355431.196	338.91

VICINITY MAP  
 SCALE: 1"=600'

CONTRACT No. 34-4010 D  
 STONE LAKE - LOTS C-1 THROUGH C-39  
 HOWARD COUNTY, MARYLAND  
 DEPARTMENT OF PUBLIC WORKS

TYPE OF BUILDING	SINGLE FAMILY
NUMBER OF UNITS	36
NUMBER OF S.H.C.'s	36
NUMBER OF W.H.C.'s	36
DRAINAGE AREA	MIDDLE PATUXENT
TREATMENT PLANT	LITTLE PATUXENT WATER RECLAMATION PLANT

GENERAL NOTES

- PART I
- Approximate location of existing mains are shown. The contractor shall take all necessary precautions to protect existing mains and services and maintain uninterrupted supply. Any damage incurred shall be repaired immediately to the satisfaction of the Engineer at the Contractor's expense.
  - All horizontal controls are based on Maryland State Coordinates [North American Datum 1983 (NAD '83)].
  - All vertical controls are based on U.S.G.S. data.
  - All pipe elevations shown are invert elevations.
  - Clear all utilities by a minimum of 6". Clear all poles by 2'-0" minimum or tunnel as required. The owner has contacted the utility companies and has made arrangements for bracing of poles as shown on the drawings. In the event the contractor's work requires the bracing of additional poles, any cost incurred by the owner for bracing of additional poles or damages shall be deducted from money owed the contractor. The contractor shall coordinate with the utility companies to schedule the bracing of the poles.
  - For details not shown on the drawings, and for materials and construction methods use Howard County Design Manual, Volume IV, Standard Specifications and Detail for Construction (Latest Edition). The contractor shall have a copy of Volume IV on the job.
  - Where test pits have been made on existing utilities, they are noted by the symbol  $\oplus$  at the location of the test pit. A note or notes containing the results of the test pit or pits is included on the drawings. Existing utilities in the vicinity of the proposed work for which test pits have not been dug shall be located by the contractor two weeks in advance of construction operations at his own expense.
  - Contractor shall notify the following utility companies or agencies at least (5) working days before starting work shown on these plans:
 

State Highway Administration	410-531-5533
BGE Contractor Services	410-850-4620
BGE Under Ground Damage Control	410-291-4607
Miss Utility	1-800-257-7777
Colonial Pipeline Co.	410-549-4120
Howard County Department of Public Works	
Bureau of Utilities	313-4900
Verizon	1-800-446-5266
  - Trees and shrubs are to be protected from damage to maximum extent. Trees and shrubs located within the construction strip are not to be removed or damaged by the contractor.
  - Contractor shall remove trees, stumps and roots along line of excavation. Payment for such removal shall be included in the unit price bid for construction of the main.
  - The contractor shall notify the Bureau of Highways, Howard County, at (410) 313-2450 at least five (5) working days before any open cut of any County road or boring/jacking operation on County roads for laying water/sewer mains or house connections. The approval of these drawings will constitute compliance with DPW requirement per Section 18.114(a) of the Howard County Code.
- PART II - WATER
- All water mains to be D.I.P. Class 52 unless otherwise noted.
  - Tops of all water mains to have a minimum of 3-1/2' cover unless otherwise noted.
  - Valves adjacent to tees shall be strapped to tees.
  - All fittings shall be buttressed or anchored with concrete in accordance with the Standard Details unless otherwise provided for on the drawings.
  - Fire hydrants shall be set to the bury line elevations shown on the drawings. All fire hydrants shall be restrained and buttressed with concrete in accordance with the Standard Details. Soil around the fire hydrant shall be compacted in accordance with Section 1000 and 1005 of the Standard Specifications.
  - The contractor shall not operate any water main valves on the existing water system.
  - All water house connections shall be for inside meter dwelling unless otherwise noted on plans or in specifications.
  - For sprinkler system for all townhomes or multi-family dwelling units should have a minimum of 1' connection with a 3/4" meter.
- PART III - SEWER
- All sewer mains shall be DIP and P.V.C. unless otherwise noted.
  - All manholes shall be 4'-0" inside diameter unless otherwise noted.
  - Force mains shall be D.I.P. only.
  - Manholes shown with 12" and 16" walls are for brick manholes only.
  - Manholes designated W.T. in plan and profile shall have watertight frame and covers, Standard Detail G5.52. Where watertight frame and cover is used, set top of frame 1'-6" above finished grade unless otherwise noted on drawings.
  - House(s) with the symbol "C.N.S." indicates that cellar cannot be served.

Sediment Control Measures will be implemented in accordance with Section 219 of the Specifications & with drawings F-02-30.

REVIEWED FOR HOWARD SOIL CONSERVATION DISTRICT AND MEETS TECHNICAL REQUIREMENT

*John R. Robertson* 3/25/02  
 SIGNATURE DATE

S.D.A. NATURAL RESOURCES CONSERVATION SERVICE

THIS DEVELOPMENT PLAN IS APPROVED FOR SOIL EROSION AND SEDIMENT CONTROL BY THE HOWARD SOIL CONSERVATION DISTRICT.

APPROVED: *Jim Meyer* 3/25/02  
 HOWARD S.C. DATE

DEPARTMENT OF PUBLIC WORKS  
 HOWARD COUNTY, MARYLAND

*Robert M. Bump* 3-15-02  
 CHIEF, BUREAU OF UTILITIES DATE

DEPARTMENT OF PLANNING AND ZONING  
 HOWARD COUNTY, MARYLAND

*[Signature]* 3/26/02  
 CHIEF, DEVELOPMENT ENGINEERING DIVISION DATE

GLW GUTSCHICK LITTLE & WEBER, P.A.  
 CIVIL ENGINEERS, LAND SURVEYORS, LAND PLANNERS, LANDSCAPE ARCHITECTS  
 3909 NATIONAL DRIVE - SUITE 250 - BURTONSVILLE OFFICE PARK  
 BURTONSVILLE, MARYLAND 20886  
 TEL: 301-421-4024 BAL: 410-880-1820 DC/VA: 301-989-2524 FAX: 301-421-4186



DES: WLB/DEV			
DRN: WLB/JAU			
CHK: CKG			
DATE: 3/02	K.C.I. 1	AS-BUILT DATA ADDED TO PLAN	01/21/03
	BY NO	REVISION	DATE

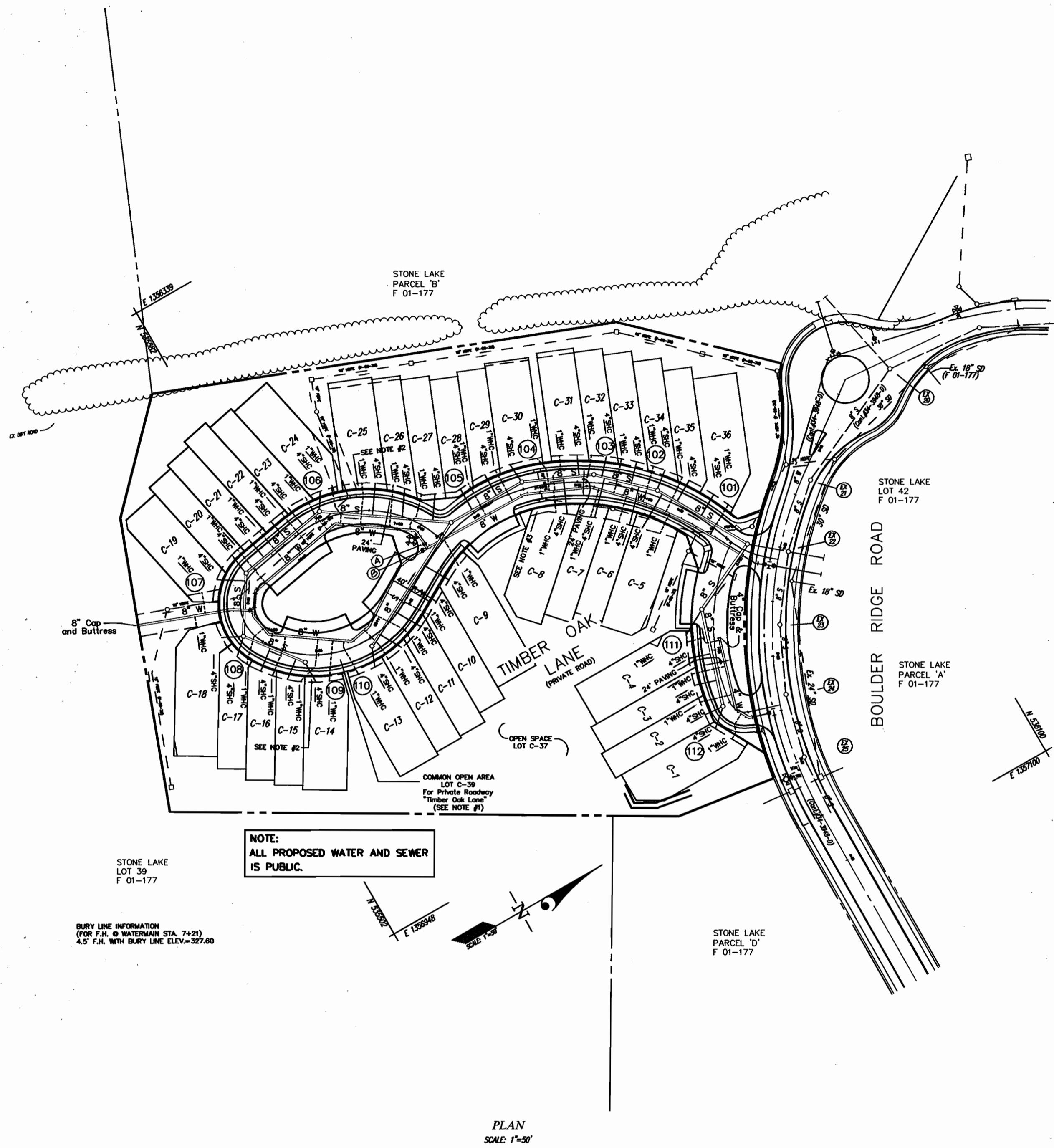
TITLE SHEET  
 SCALE: AS SHOWN

600' SCALE MAP NO. 47 BLOCK NO. 9/10

STONE LAKE - Lots C1 through C-39  
 A Resubdivision of Parcel C  
 Howard County, Maryland.  
 Election District No. 6  
 CONTRACT No. 34-4010 D

GLW FILE No. 01075  
 SCALE AS SHOWN  
 SHEET 1 OF 3

L:\CADD\DRAWINGS\01075\DESIGN\Incls\075wscov.dwg 03/05/2002 10:00:06 AM EST



NOTE:  
ALL PROPOSED WATER AND SEWER IS PUBLIC.

BURY LINE INFORMATION  
(FOR F.A. @ WATERMAIN STA. 7+21)  
4.5' F.A. WITH BURY LINE ELEV=327.60

PLAN  
SCALE: 1"=50'

SEWER MANHOLE LOCATIONS		
MANHOLE NO.	STATION	OFFSET
101	0+29.74	6.64' RIGHT
102	1+27.36	5.32' RIGHT
103	1+85.60	7.18' RIGHT
104	2+49.50	6.51' RIGHT
105	3+21.53	6.30' RIGHT
106	7+06.64	7.93' LEFT
107	6+21.95	4.34' LEFT
108	5+68.20	7.80' LEFT
109	5+11.59	7.01' LEFT
110	4+52.47	7.00' LEFT
111	1+13.47	11.01' LEFT
112	0+49.66	7.02' LEFT

LOT FRONTAGE	
LOT No.	DISTANCE
1	36.10'
2	26.22'
3	26.91'
4	32.88'
5	40.26'
6	26.12'
7	26.72'
8	26.10'
9	26.92', 10.96'
10	29.96'
11	28.27'
12	26.39'
13	34.04'
14	34.11'
15	26.42'
16	24.31'
17	24.31'
18	23.00'
19	27.85'
20	23.34', 3.12'
21	26.01'
22	18.36', 7.67'
23	26.61'
24	23.13'
25	40.51'
26	28.47'
27	4.67', 22.05'
28	10.84', 16.85'
29	27.40'
30	38.44', 1.93'
31	34.24'
32	26.81'
33	27.87'
34	29.55'
35	22.00'
36	34.04'

- NOTE:
- LOT C-39 IS ALSO A SEWER, WATER AND UTILITY EASEMENT (PUBLIC).
  - 5' TREE MAINTENANCE & UTILITY EASEMENT (PRIVATE) AND A 5' WATER, SEWER & UTILITY EASEMENT (PUBLIC).
  - PRIVATE STORM DRAIN AND TREE MAINTENANCE, PUBLIC S.H.C., W.H.C., AND UTILITY EASEMENT.

FITTING LOCATIONS FOR WATER MAIN		
FITTING TYPE	WATER MAIN STATION	STATION AND OFFSET
4" WATER - TIMBER OAK LANE		
1/8 H.B.	0+03	0+41.57 0.20' RT.
1/8 H.B.	0+14	0+30.00 5.34' LT.
8" WATER - TIMBER OAK LANE		
P.C. 290' C.R.	0+31	0+60.53 6.89' LT.
P.C. 290' C.R.	0+55	0+84.89 9.30' LT.
P.C. 290' C.R.	0+66	0+96.79 9.92' LT.
P.C. 290' C.R.	1+23	1+56.54 8.65' LT.
1/8 H.B.	1+53	1+87.67 4.22' LT.
1/8 H.B.	2+14	2+50.50 5.01' LT.
8"x 8" TEE	3+16=7+35	3+52.29 7.61' RT.
1/16 H.B.	3+46	3+78.72 19.93' RT.
1/16 H.B.	4+07	4+45.47 9.26' RT.
1/8 H.B.	4+28	4+66.69 5.36' RT.
1/8 H.B.	5+03	5+51.01 8.42' RT.
1/8 H.B.	5+25	5+79.66 9.62' RT.
8"x 8" TEE	5+30	5+86.00 11.58' RT.
1/8 H.B.	5+48	6+11.52 11.56' RT.
1/8 H.B.	6+43	7+16.25 7.79' RT.
1/8 H.B.	7+16	7+97.03 7.41' RT.
8" WATER - BETWEEN LOTS C-18 & C-19		
1/32 H.B.	0+20	5+90.58 8.08' LT.

C.R. INDICATES CRIMPING RADIUS

FROM	LOT	TO	FROM	LOT	TO	
MH I/2	C-1	21' 18"	MH I/2B	C-20	27' 28"	
C-2	15' 15"	C-3	19' 23"	C-30	10' 31"	
MH III	C-4	22' 7"	MH I/2C	C-21	39' 47"	
C-5	40' 47"	C-6	50' 66"	C-22	14' 22"	
C-7	50' 66"	C-8	34' 30"	C-23	38' 39"	
MH I/4	C-9	64' 15"	C-24	13' 17"		
C-10	82' 6"	C-11	82' 6"	C-25	38' 39"	
C-12	77' 10"	C-13	32' 44"	C-26	32' 44"	
C-14	29' 30"	C-15	29' 30"	C-27	65' 73"	
MH I/2E	C-16	29' 30"	C-17	14' 13"	C-28	40' 47"
C-18	29' 30"	C-19	31' 19"	MH I/2F	C-18	20' 14"
MH I/2G	C-2	15' 15"	C-20	27' 28"	C-21	39' 47"
C-3	19' 23"	C-4	22' 7"	C-22	14' 22"	
C-5	40' 47"	C-6	50' 66"	C-23	38' 39"	
C-7	50' 66"	C-8	34' 30"	C-24	13' 17"	
MH I/2H	C-9	64' 15"	C-10	82' 6"	C-25	38' 39"
C-11	82' 6"	C-12	77' 10"	C-26	32' 44"	
C-13	32' 44"	C-14	29' 30"	C-27	65' 73"	
MH I/2I	C-16	29' 30"	C-17	14' 13"	C-28	40' 47"
C-18	29' 30"	C-19	31' 19"	MH I/2J	C-18	20' 14"
MH I/2K	C-2	15' 15"	C-20	27' 28"	C-21	39' 47"
C-3	19' 23"	C-4	22' 7"	C-22	14' 22"	
C-5	40' 47"	C-6	50' 66"	C-23	38' 39"	
C-7	50' 66"	C-8	34' 30"	C-24	13' 17"	
MH I/2L	C-9	64' 15"	C-10	82' 6"	C-25	38' 39"
C-11	82' 6"	C-12	77' 10"	C-26	32' 44"	
C-13	32' 44"	C-14	29' 30"	C-27	65' 73"	
MH I/2M	C-16	29' 30"	C-17	14' 13"	C-28	40' 47"
C-18	29' 30"	C-19	31' 19"	MH I/2N	C-18	20' 14"
MH I/2O	C-2	15' 15"	C-20	27' 28"	C-21	39' 47"
C-3	19' 23"	C-4	22' 7"	C-22	14' 22"	
C-5	40' 47"	C-6	50' 66"	C-23	38' 39"	
C-7	50' 66"	C-8	34' 30"	C-24	13' 17"	
MH I/2P	C-9	64' 15"	C-10	82' 6"	C-25	38' 39"
C-11	82' 6"	C-12	77' 10"	C-26	32' 44"	
C-13	32' 44"	C-14	29' 30"	C-27	65' 73"	
MH I/2Q	C-16	29' 30"	C-17	14' 13"	C-28	40' 47"
C-18	29' 30"	C-19	31' 19"	MH I/2R	C-18	20' 14"
MH I/2S	C-2	15' 15"	C-20	27' 28"	C-21	39' 47"
C-3	19' 23"	C-4	22' 7"	C-22	14' 22"	
C-5	40' 47"	C-6	50' 66"	C-23	38' 39"	
C-7	50' 66"	C-8	34' 30"	C-24	13' 17"	
MH I/2T	C-9	64' 15"	C-10	82' 6"	C-25	38' 39"
C-11	82' 6"	C-12	77' 10"	C-26	32' 44"	
C-13	32' 44"	C-14	29' 30"	C-27	65' 73"	
MH I/2U	C-16	29' 30"	C-17	14' 13"	C-28	40' 47"
C-18	29' 30"	C-19	31' 19"	MH I/2V	C-18	20' 14"
MH I/2W	C-2	15' 15"	C-20	27' 28"	C-21	39' 47"
C-3	19' 23"	C-4	22' 7"	C-22	14' 22"	
C-5	40' 47"	C-6	50' 66"	C-23	38' 39"	
C-7	50' 66"	C-8	34' 30"	C-24	13' 17"	
MH I/2X	C-9	64' 15"	C-10	82' 6"	C-25	38' 39"
C-11	82' 6"	C-12	77' 10"	C-26	32' 44"	
C-13	32' 44"	C-14	29' 30"	C-27	65' 73"	
MH I/2Y	C-16	29' 30"	C-17	14' 13"	C-28	40' 47"
C-18	29' 30"	C-19	31' 19"	MH I/2Z	C-18	20' 14"

\*SEE 'B' VALUES 'A' & 'B' ON PLAN.

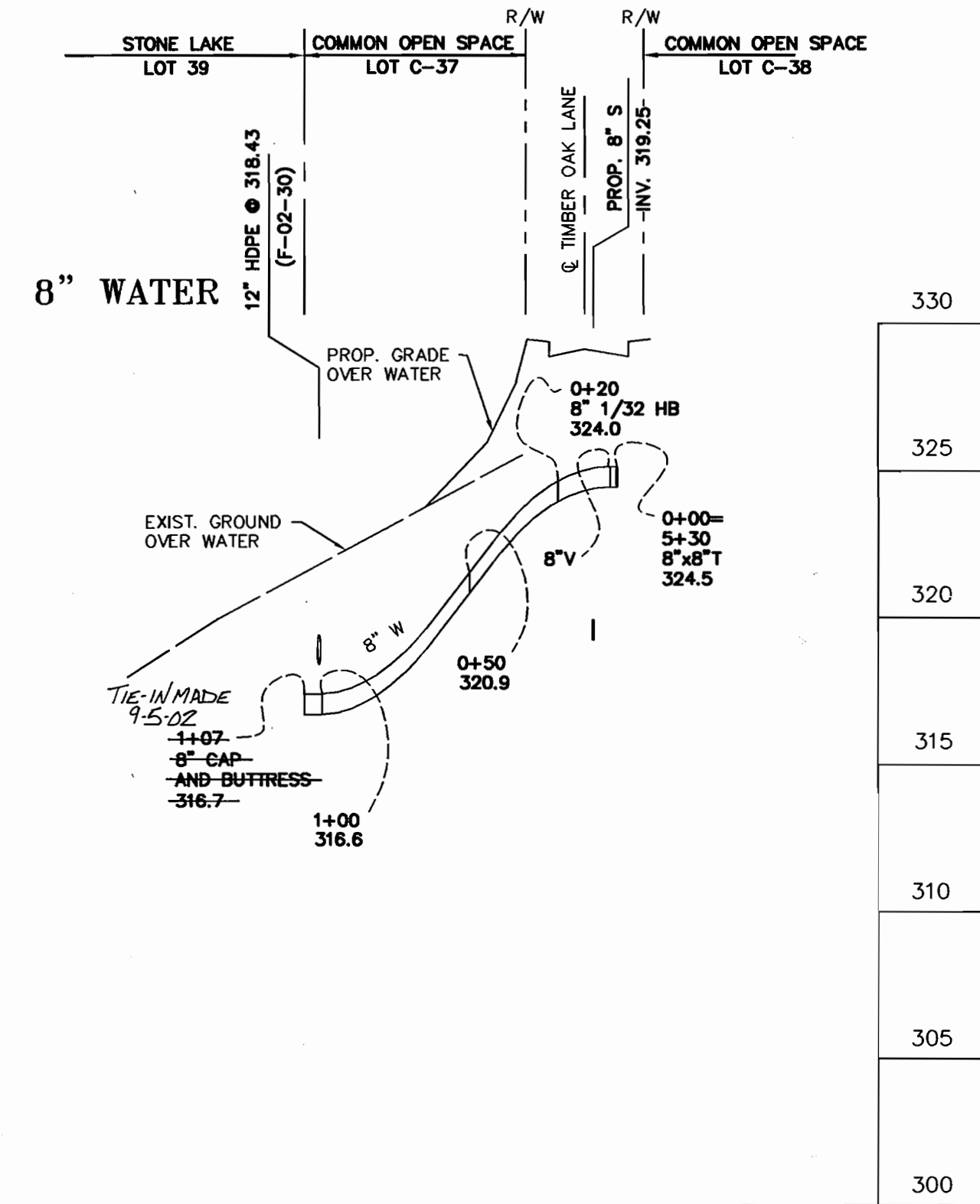
01075ws.dwg 2-18-02 2:30:48 pm EST

DEPARTMENT OF PUBLIC WORKS HOWARD COUNTY, MARYLAND Robert Benjamin CHIEF, BUREAU OF UTILITIES DATE: 3-15-02	DEPARTMENT OF PLANNING AND ZONING HOWARD COUNTY, MARYLAND [Signature] CHIEF, DEVELOPMENT ENGINEERING DIVISION DATE: 3/15/02	<b>GLW</b> GUTSCHICK LITTLE & WEBER, P.A. CIVIL ENGINEERS, LAND SURVEYORS, LAND PLANNERS, LANDSCAPE ARCHITECTS 3909 NATIONAL DRIVE - SUITE 250 - BURTONSVILLE OFFICE PARK BURTONSVILLE, MARYLAND 20866 TEL: 301-421-4024 FAX: 410-880-1820 DC/WA: 301-989-2524 FAX: 301-421-4186		DES: WLB/DEV DRN: WLB/DEV CHK: CKG DATE: 3/02	WATER and SEWER EXTENSION PLAN 600' SCALE MAP NO. 47 BLOCK NO.	<b>STONE LAKE - Lots C1 through C-39</b> A Resubdivision of Parcel C Howard County, Maryland. Election District No. 6 CONTRACT No. 34-4010 D	SCALE 1"=50' SHEET 2 OF 3
---	---	--	--	--	---	--	------------------------------------

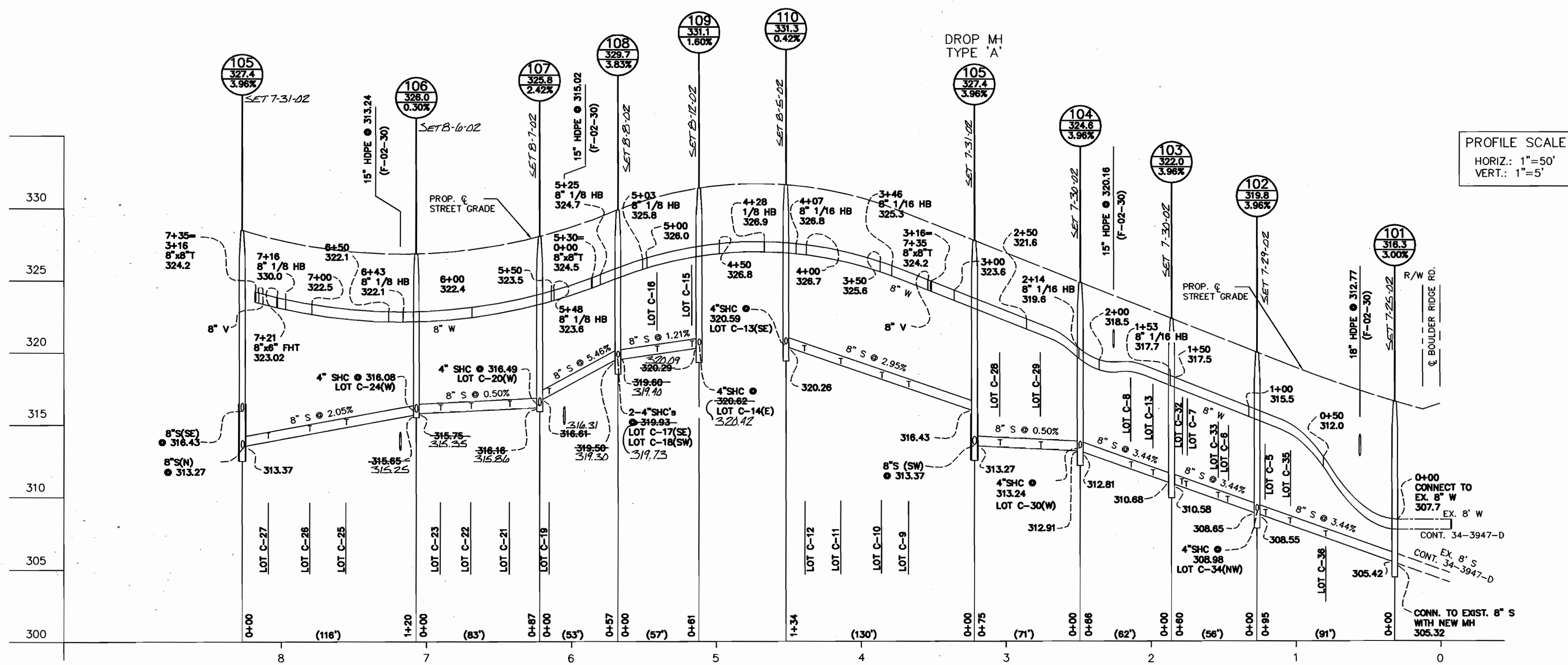
GLW FILE 01075 01075WS.DWG

**SEWER HOUSE CONNECTION INFORMATION**

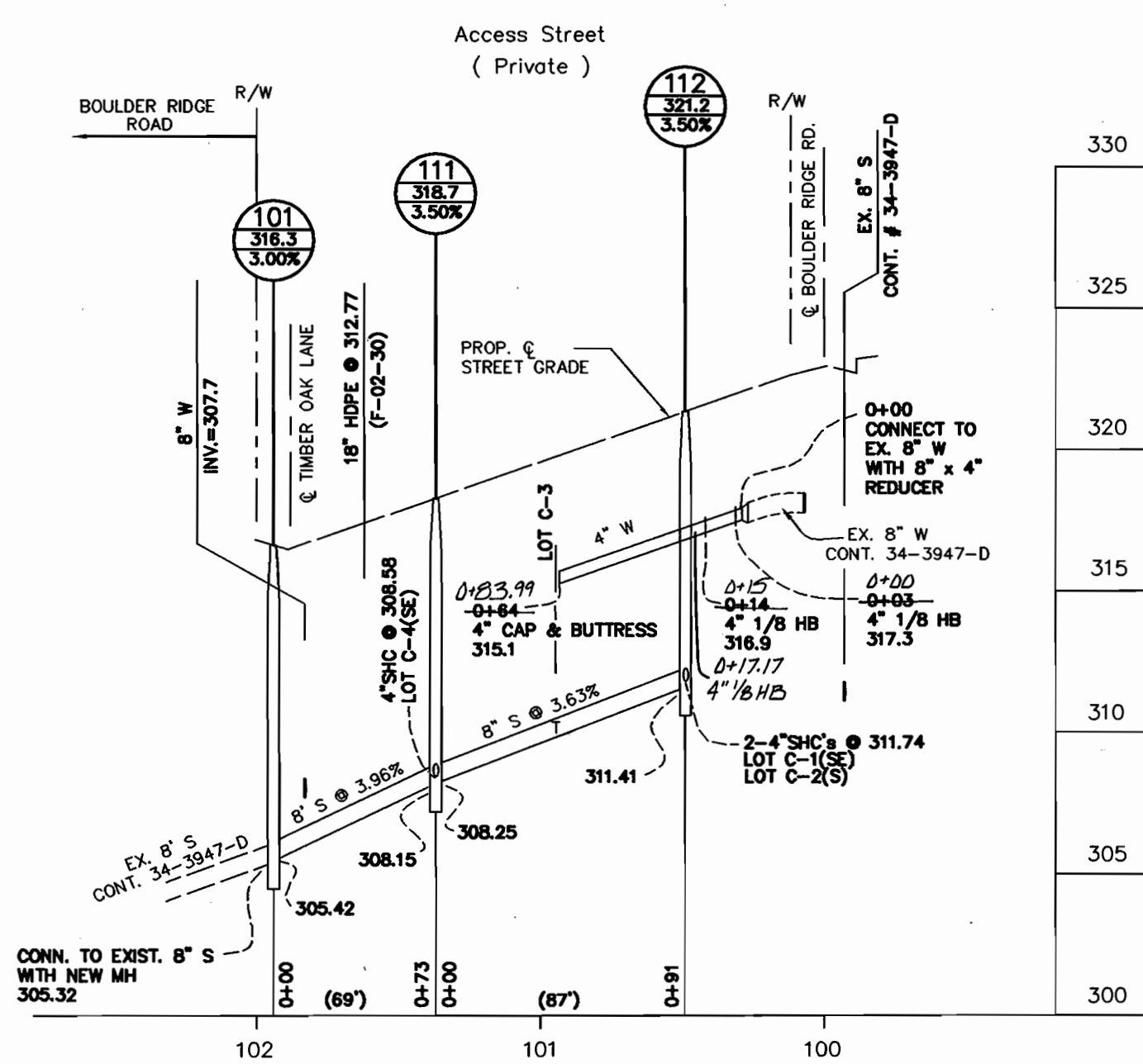
LOT #	STATION	FROM @ OF MH	SLOPE OF S.H.C.	INV. @ MAIN/MH	INV. @ EASEMENT	MIN. CELLAR
1	0+112	MH 112	2.00%	311.74	312.13	316.16
2	0+112	MH 112	2.00%	311.74	312.06	315.80
3	0+42	111	2.00%	309.87	310.28	314.03
4	0+90	101	2.00%	308.58	309.00	313.38
5	0+19	102	2.00%	308.40	308.97	313.80
6	0+50	102	2.00%	310.47	311.07	314.89
7	0+28	103	2.00%	311.74	312.31	316.60
8	0+45	105	2.00%	317.87	318.41	322.47
9	0+65	105	2.00%	318.46	318.94	322.84
10	0+93	105	2.00%	319.29	319.85	323.76
11	0+117	105	2.00%	319.99	320.55	324.24
12	0+110	106	2.00%	320.59	320.94	324.81
13	0+109	106	2.00%	320.62	321.00	324.90
14	0+53	108	2.00%	320.39	320.79	324.49
15	0+26	108	2.00%	320.06	320.51	324.52
16	0+108	108	2.00%	319.93	320.28	324.17
17	0+108	108	2.00%	319.93	320.29	324.69
18	0+07	107	2.00%	317.10	317.61	321.64
19	0+107	107	2.00%	316.49	316.87	320.57
20	0+65	106	2.00%	316.24	316.66	320.30
21	0+38	106	2.00%	316.10	316.52	320.30
22	0+17	106	2.00%	316.00	316.41	320.20
23	0+106	106	2.00%	316.08	316.41	320.44
24	0+72	105	2.00%	314.88	315.47	319.44
25	0+46	105	2.00%	314.34	314.88	318.74
26	0+18	105	2.00%	313.77	314.25	318.13
27	0+55	104	2.00%	314.17	314.61	318.43
28	0+27	104	2.00%	313.59	314.03	317.81
29	0+104	104	2.00%	313.24	313.59	317.46
30	0+13	103	2.00%	311.23	311.61	315.41
31	0+52	102	2.00%	310.54	310.90	314.66
32	0+23	102	2.00%	309.37	309.77	313.53
33	0+102	102	2.00%	308.98	309.32	313.17
34	0+72	101	2.00%	308.00	308.44	312.40
35	0+48	101	2.00%	307.17	307.62	311.83



**TIMBER OAK LANE**



**TIMBER OAK LANE**



01075ws2.dwg 2-18-02 2:29:23 pm EST

GLW FILE 01075  
01075WS2.dwg

DEPARTMENT OF  
PUBLIC WORKS  
HOWARD COUNTY, MARYLAND  
*Robert Berman* 3-15-02  
CHIEF, BUREAU OF UTILITIES DATE

DEPARTMENT OF  
PLANNING AND ZONING  
HOWARD COUNTY, MARYLAND  
*Michael D. ...* 3/20/02  
CHIEF, DEVELOPMENT ENGINEERING DIVISION DATE

**GLW GUTSCHICK LITTLE & WEBER, P.A.**  
CIVIL ENGINEERS, LAND SURVEYORS, LAND PLANNERS, LANDSCAPE ARCHITECTS  
3909 NATIONAL DRIVE - SUITE 250 - BURTOWVILLE OFFICE PARK  
BURTOWVILLE, MARYLAND 20865  
TEL: 301-421-4024 BAL: 410-880-1820 DCVA: 301-989-2524 FAX: 301-421-4186



DES: WLB/DEV					
DRN: WLB/DEV					
CHK: CKG					
DATE: 3/02					
BY: NO					
REVISION					
DATE					

WATER and SEWER EXTENSION  
PROFILES  
600' SCALE MAP NO. 47 BLOCK NO. 9/10

**STONE LAKE - Lots C1 through C-39**  
A Resubdivision of Parcel C  
Howard County, Maryland.  
Election District No. 6  
CONTRACT No. 34-4010 D

SCALE AS SHOWN  
SHEET 3 OF 3