


GENERAL NOTES

1. Approximate location of existing water mains are shown. The contractor shall take all necessary precautions to protect existing mains and services and maintain uninterrupted supply. Any damage incurred shall be repaired immediately to the satisfaction of the Engineer at the Contractor's expense.
2. All horizontal controls are based on Maryland State Coordinates.
3. All vertical controls are based on U.S.G.S. data.
4. All pipe elevations shown are invert elevations.
5. Clear all utilities by a minimum of 6". Clear all poles by 2'-0" minimum or tunnel as required. The owner has contacted the utility companies and has made arrangements for bracing of poles as shown on the drawings. In the event the contractor's work requires the bracing of additional poles, and cost incurred by the owner for bracing of additional poles or damages shall be deducted from money owed the contractor. The contractor shall coordinate with the utility companies to schedule the bracing of the poles.
6. For details not shown on the drawings and for materials and construction methods use Howard County Design Manual, Volume IV, Standard Specifications and Detail for Construction (Latest Edition). The contractor shall have a copy of Volume IV on the job.
7. Where test pits have been made on existing utilities, they are noted by the symbol  at the location of the test pit. A note or notes containing the results of the test pit or pits is included on the drawings. Existing utilities in the vicinity of the proposed work for which test pits have not been dug shall be located by the contractor two weeks in advance of construction operations at his own expense.
8. Contractor shall notify the following utility companies or agencies at least five working days before starting to work shown on these plans:
 - State Highway Administration 531-5533
 - Baltimore Gas & Electric Co. Contractor Services 850-4820
 - Baltimore Gas & Electric Co. Underground Damage Control 787-9068
 - Miss Utility 1-800-257-7777
 - Colonial Pipeline Co. 795-1390
 - Bureau of Utilities, Howard County Department of Public Works 313-4800
 - Bell Atlantic 1-800-446-5266
9. Contractor shall remove trees, stumps and roots along line of excavation. Payment for such removal shall be included in the unit price bid for construction of the main.
10. All fill areas within future roadway and under structures to be compacted to minimum of 95% compaction as determined by AASHTO T-180.
11. Valves adjacent to tees shall be strapped to tees.
12. All water mains to be D.I.P. Class 52 unless otherwise noted.
13. Tops of all water mains to have a minimum of 3-1/2' cover unless otherwise noted.
14. All fittings shall be buttressed or anchored with concrete in accordance with the Standard Details unless otherwise provided for the drawings.
15. Fire hydrants shall be set to the bury line elevations shown on the drawings. All fire hydrants shall be restressed and buttressed with concrete in accordance with Section 1000 and 1005 of the Standard Specifications.
16. The contractor shall notify the Bureau of Highways, Howard County, at (410) 313-2450 at least five working days before any open cut of any County road or boring/jacking operation in County roads for laying water/sewer mains or house connections. The approval of these drawings will constitute compliance with DPW requirements per Section 15.11(a) of the Howard County Code.
17. The contractor shall not operate any water main valves on the existing water system.
18. All water house connections shall be for inside meter setting unless otherwise noted on plans or in specifications.
19. All public water and sewer systems shall be constructed under the terms of a developer agreement between the County and the developer. The plan for private water and sewer system shall be included in the site plan of the development. The design of the public water and sewer systems shall conform with Howard County Standard Specifications and Details for Water Mains and Sanitary Sewers. The design of the private water and sewer systems shall conform to both the Howard County Plumbing Code and the Howard County Design Manual, Volume II - Water and Sewer, and the Howard County Design Manual, Volume IV - Standard Specifications and Details. In the event there is a conflict, the more stringent criteria will govern.
20. All sanitary sewer cleanouts shall be constructed in accordance with Howard County Standard Detail S-2.22 and be installed with cast iron frame and cover when in pavement areas (see Howard County Standard Detail S-3.21 for frame, cover and concrete support ring).
21. Both proposed sanitary sewer drop house connections shall be constructed in accordance with Howard County Standard Detail S-1.32, Type "B".
22. All sewer mains shall be D.I.P. or P.V.C. unless otherwise noted.

DEVELOPER'S CERTIFICATION

I/WE HEREBY CERTIFY THAT ALL DEVELOPMENT AND CONSTRUCTION WILL BE DONE BY ACCORDING TO THIS PLAN OF DEVELOPMENT AND PLAN FOR EROSION AND SEDIMENT CONTROL AND THAT ALL RESPONSIBLE PERSONNEL INVOLVED IN THE CONSTRUCTION PROJECT WILL HAVE A CERTIFICATE OF ATTENDANCE AT THE DEPARTMENT OF THE ENVIRONMENT APPROVED TRAINING PROGRAM FOR THE CONTROL OF SEDIMENT AND EROSION BEFORE BEGINNING THE PROJECT. I ALSO AUTHORIZE PERIODIC ON-SITE INSPECTION BY THE HOWARD SOIL CONSERVATION DISTRICT OR THEIR AUTHORIZED AGENTS, AS ARE DEEMED NECESSARY.

SEDIMENT CONTROL MEASURES FOR THIS CONTRACT WILL BE IMPLEMENTED IN ACCORDANCE WITH SECTION WITH SECTION 219 OF THE HOWARD COUNTY DESIGN MANUAL AND STANDARDS AND SPECIFICATIONS FOR SOIL EROSION AND SEDIMENT CONTROL IN DEVELOPING AREAS (SDP 01-147)

[Signature] *[Signature]*
 SIGNATURE OF DEVELOPER DATE

ENGINEER'S CERTIFICATION

I HEREBY CERTIFY THAT THIS PLAN FOR EROSION AND SEDIMENT CONTROL REPRESENTS A PRACTICAL AND WORKABLE PLAN BASED ON MY PERSONAL KNOWLEDGE OF THE SITE CONDITIONS AND THAT IT WAS PREPARED IN ACCORDANCE WITH THE REQUIREMENTS OF THE HOWARD SOIL CONSERVATION DISTRICT.

[Signature] *[Signature]*
 SIGNATURE OF ENGINEER DATE

THE DEVELOPMENT PLAN IS APPROVED FOR SOIL EROSION AND SEDIMENT CONTROL BY THE HOWARD SOIL CONSERVATION DISTRICT (SDP 01-147)

APPROVED:
[Signature] *[Signature]*
 HOWARD SOIL CONSERVATION DISTRICT DATE

REVIEWED FOR HOWARD SOIL CONSERVATION DISTRICT AND MEETS TECHNICAL REQUIREMENTS

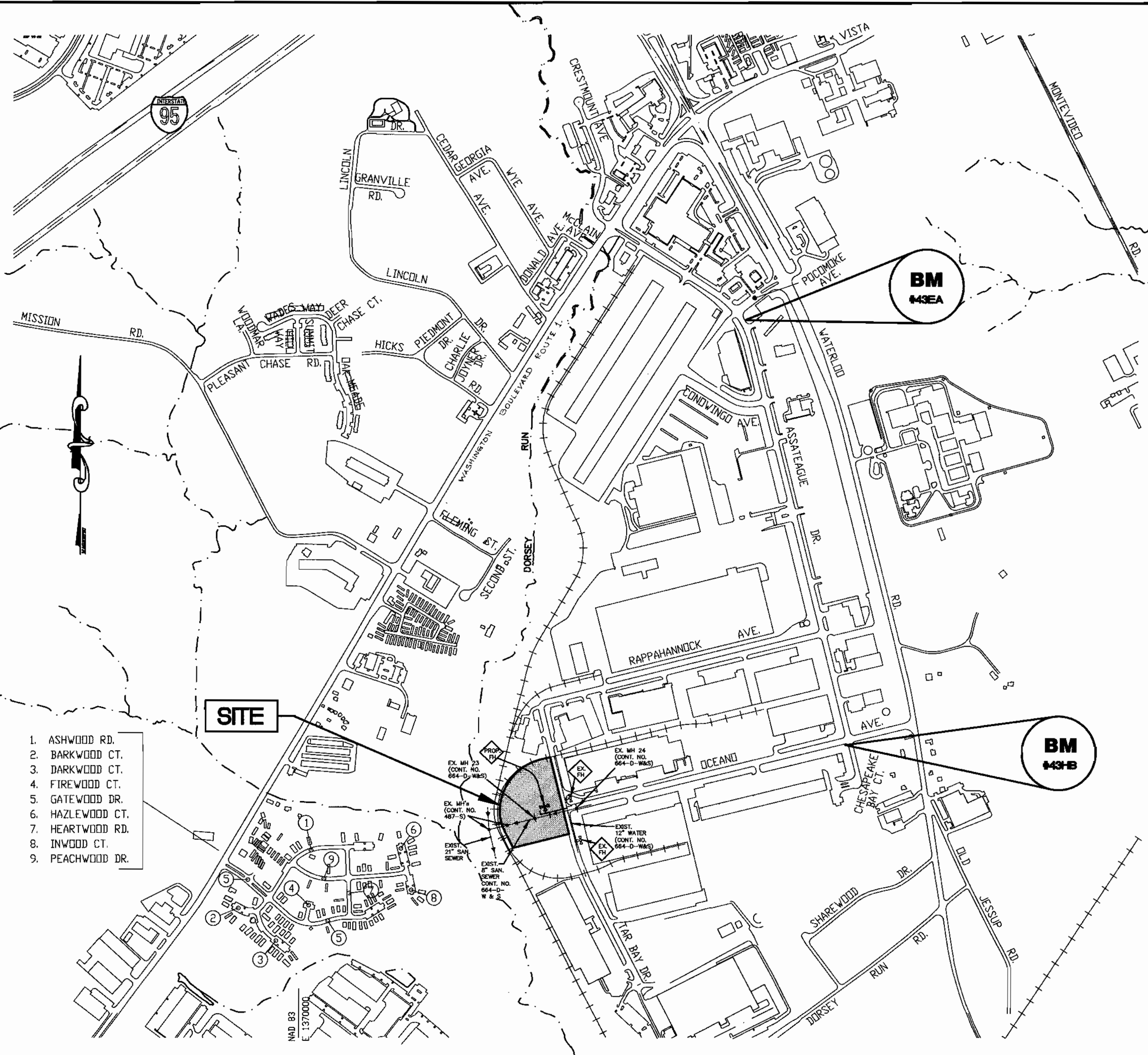
[Signature] *[Signature]*
 U.S. SOIL CONSERVATION SERVICE DATE

DEPARTMENT OF PUBLIC WORKS
 HOWARD COUNTY, MARYLAND

[Signature] *[Signature]*
 CHIEF, BUREAU OF UTILITIES DATE

DEPARTMENT OF PLANNING AND ZONING
 HOWARD COUNTY, MARYLAND

[Signature] *[Signature]*
 CHIEF, DEVELOPMENT ENGINEERING DIVISION DATE



LOCATION MAP
 SCALE: 1"=600'

WATER AND SEWER CONSTRUCTION PLANS
 for
MARYLAND FOOD CENTER AUTHORITY
CROSS DOCK/TRAILER PARKING
BLOCK B, PARCEL B-1 AND B-2
6th ELECTION DISTRICT HOWARD COUNTY, MARYLAND
CONTRACT NO. 24-3992-D

INDEX OF SHEETS

SHEET NO.	TITLES
1	COVER SHEET, GENERAL NOTES & LOCATION MAP
2	PLAN AND PROFILES

BENCHMARKS:

BENCHMARK #43EA
 AKA- N/A
 NAD 83 (91) HORIZONTAL AND N6VD29 (VERTICAL)
 N 546594.000 FT. E 1373621.745 FT.
 ELEVATION = 242.876 FT.

BENCHMARK #43HB
 AKA- N/A
 NAD 83 (91) HORIZONTAL AND N6VD29 (VERTICAL)
 N 543666.776 FT. E 1374425.020 FT.
 ELEVATION = 252.306 FT.

TYPE OF BUILDING:

PARCEL B-1:	GUARD HOUSE
PARCEL B-2:	OFFICE/WAREHOUSE/DISTRIBUTION

NO. OF LOTS: 2 (EXISTING)
NO. OF WATER H.C.: 2
NO. OF SEWER H.C.: 2 (DHC) TYPE 'B'
DRAINAGE AREA: DORSEY RUN
WATER CODE: 802
SEWER CODE: 3170000
TEST GRADIENT ELEV.: 550
TREATMENT PLANT: LITTLE PATUXENT WATER QUALITY MANAGEMENT CENTER, HOWARD COUNTY

QUANTITIES

ITEMS	QUANTITIES ESTIMATED	AS BUILT		
		QUANTITIES	TYPE	MANUFACTURER/SUPPLIER
8" D.I.P. WATER MAIN	225 LF.	225 LF	8" DIP	US PIPE
6" D.I.P. WATER MAIN	13 LF.	13 LF	6" DIP	US PIPE
FIRE HYDRANTS	1 EACH	1 EA	H.C. FH	KENNEDY VALVE
8" X 8" TEE	1 EACH	1 EA	DIP	TYLER PIPE
8" X 6" TEE	1 EACH	1 EA	DIP	TYLER PIPE
8" VALVE AND ROADWAY BOX	2 EACH	2 EA	GATE VALVE	KENNEDY VALVE
6" VALVE AND ROADWAY BOX	1 EACH	1 EA	GATE VALVE	KENNEDY VALVE
12" X 8" TAPPING SLEEVE	1 EACH	1 EA	FAST TAPPING SLEEVE	FORD METER BOD.
1" WATER HOUSE CONNECTION	10 LF.	10 LF	LOPPER	HONELL METAL
PAVEMENT REPLACEMENT	44 S.Y.			
4" SEWER HOUSE CONNECTION	10 LF.	10 LF	PVC	DIAMOND PIPE
6" SEWER HOUSE CONNECTION	20 LF.	20 LF	PVC	DIAMOND PIPE
DROP SHC TYPE 'B'	2 EACH			

NAME OF UTILITY CONTRACTOR:
 SURVEY AND DRAFTING DIVISION AS-BUILT DATE:

WS WEBBER/SMITH Associates, Inc. DESIGN ENGINEERS
 1857 William Penn Way, Suite 200 Lancaster, Pennsylvania 17601
 Phone (717)-291-2266 Fax (717)-291-4401 Email: Info@webbersmith.com

STATUS: P - PRELIMINARY, F - FINAL
3894-C600 - D - F
 DRAWING NUMBER SIZE STATUS

THE INFORMATION CONTAINED ON THIS AND ANY RELATED DRAWING FILE SHALL NOT BE USED FOR ANY PURPOSE OTHER THAN THE CONVEYANCE OF INFORMATION FOR THE STATED CLIENT AND PROJECT WITHOUT THE EXPRESS WRITTEN CONSENT OF THE ENGINEER/ARCHITECT.

SYMBOL	DATE	REVISION	DRAWN	CHECKED
	10/17/03	ASSEMBLY DATA ADDED TO PLAN	K.C.T.	
	10/8/01	REVISED PER COUNTY COMMENTS	BLE	BEL
	7/31/01	ORIGINAL ISSUE	BLE	BEL

© 2001 WEBBER/SMITH Associates, Inc.

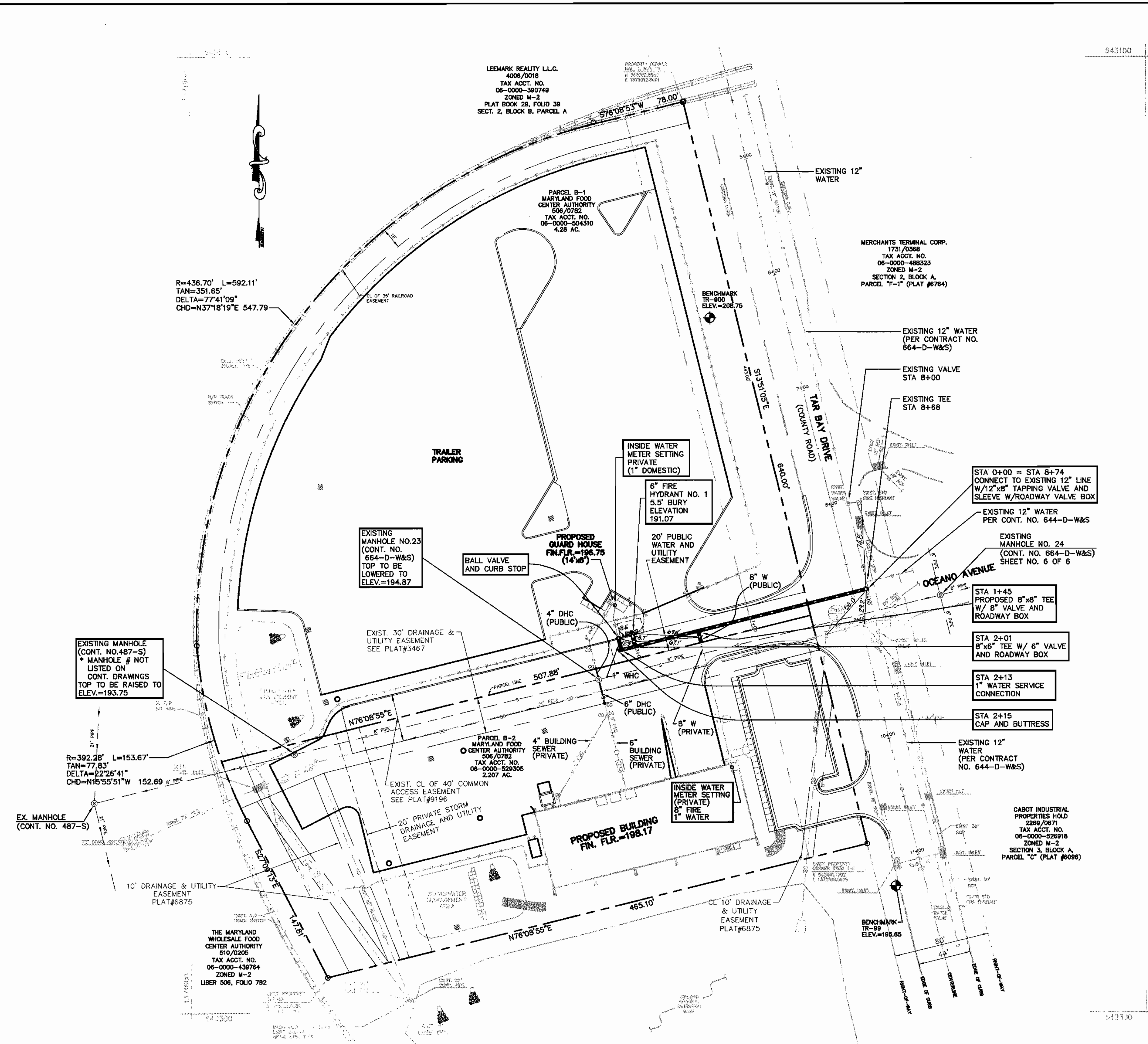
COVER SHEET, GENERAL NOTES & LOCATION MAP

CONTRACT NO. 24-3992-D
 600 SCALE MAP NO. 43
 BLOCK NO. 1

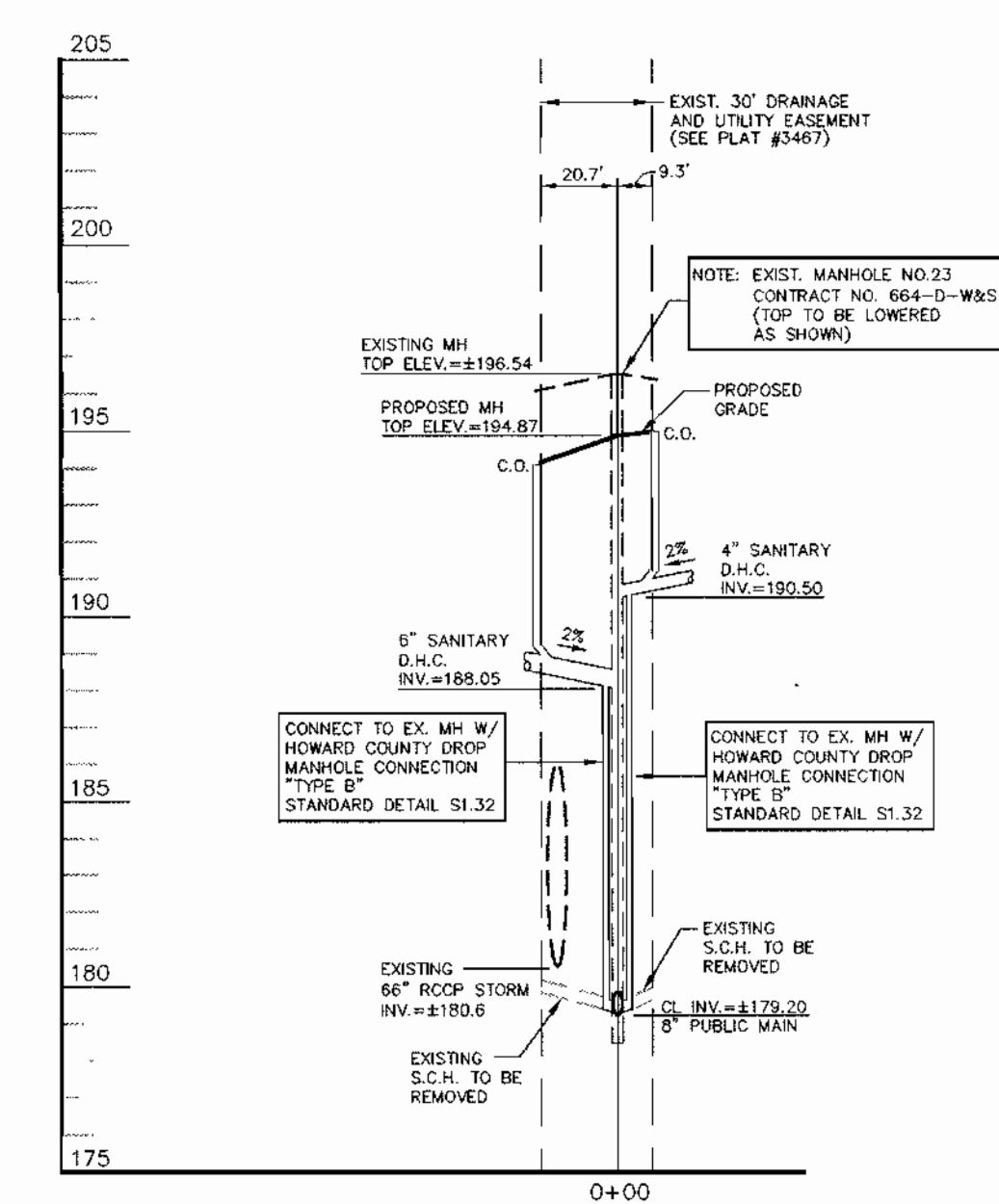
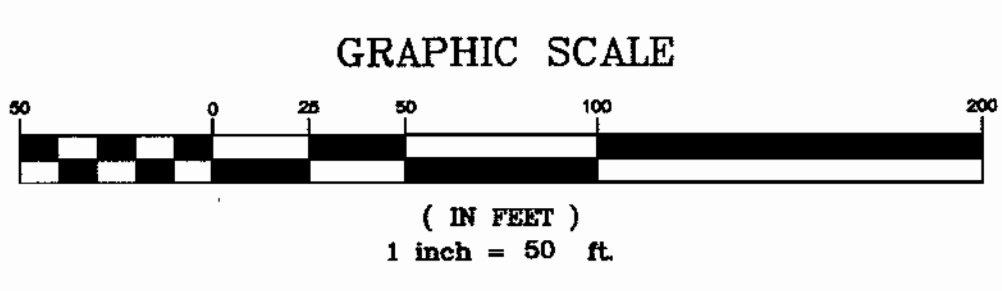
3894C600.dwg 10/8/01 10:55:35 am EST

PUBLIC WATER & SEWER MAIN
MARYLAND FOOD CENTER AUTHORITY
CROSS DOCK/TRAILER PARKING
BLOCK B, PARCEL B-1, B-2

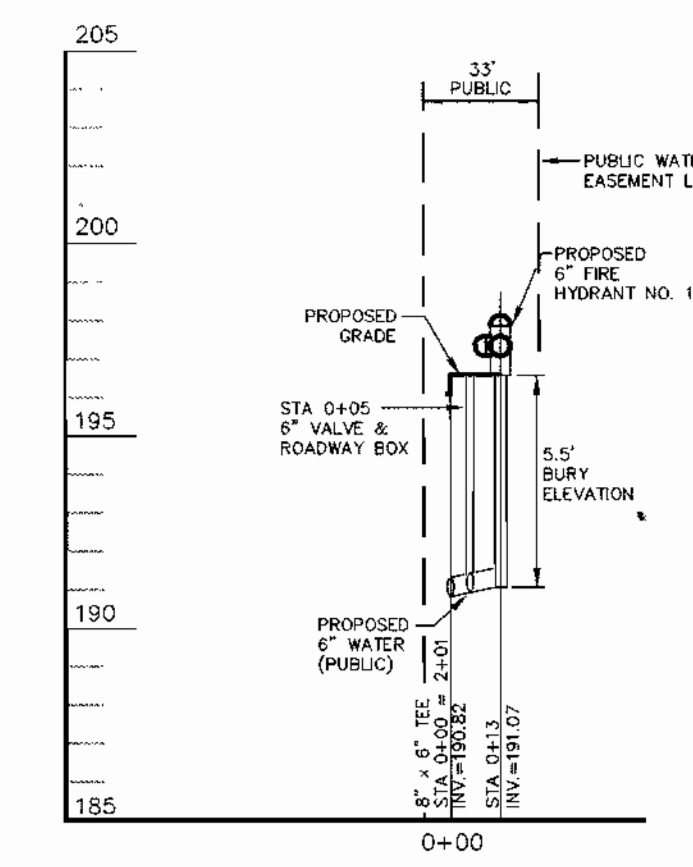
HOWARD CO., MARYLAND
 ELECTION DISTRICT: 6
 DATE: JUNE 31, 2001
 SHEET 1 OF 2



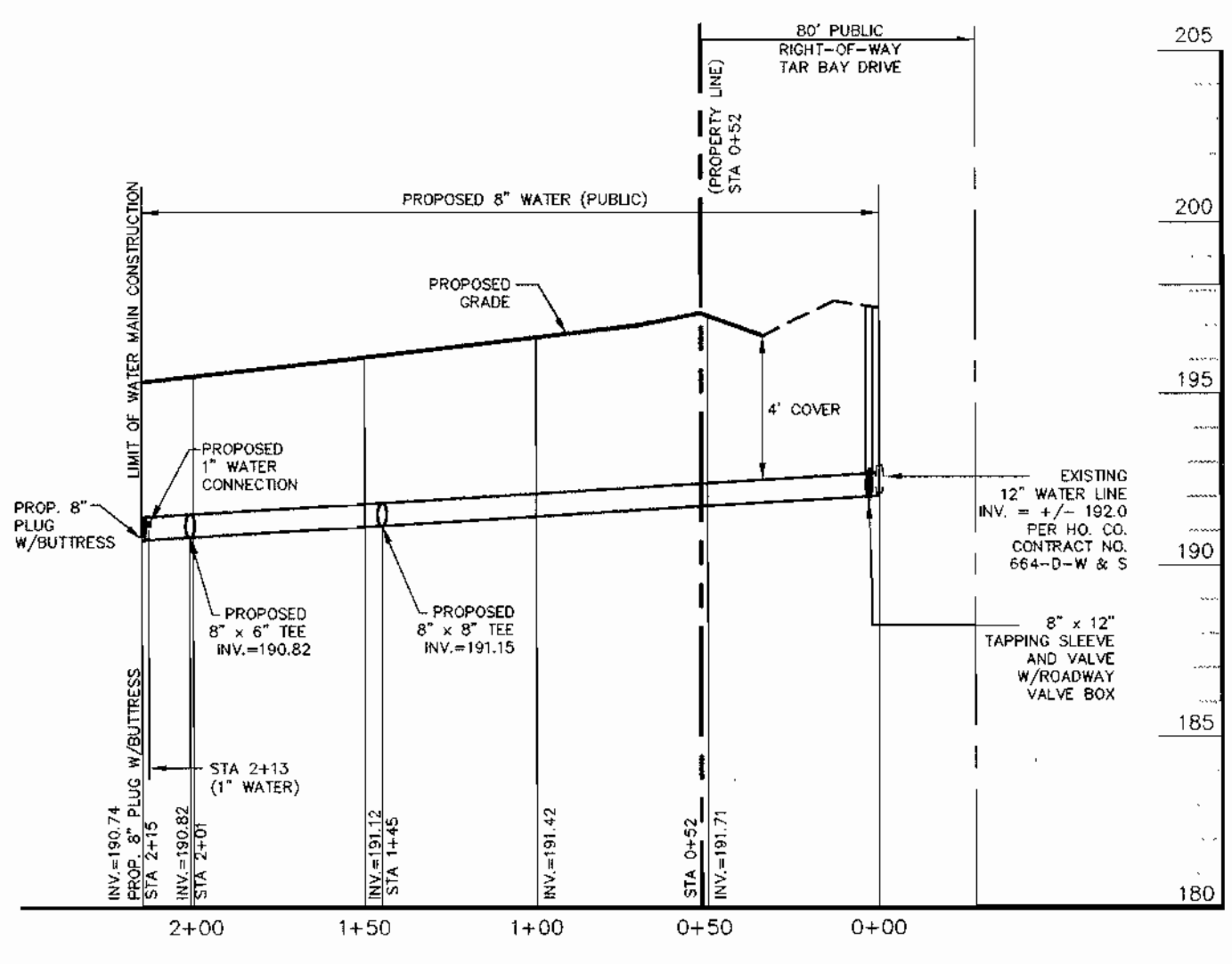
CALL 1-800-257-7777
(5) DAYS PRIOR TO THE
START OF CONSTRUCTION



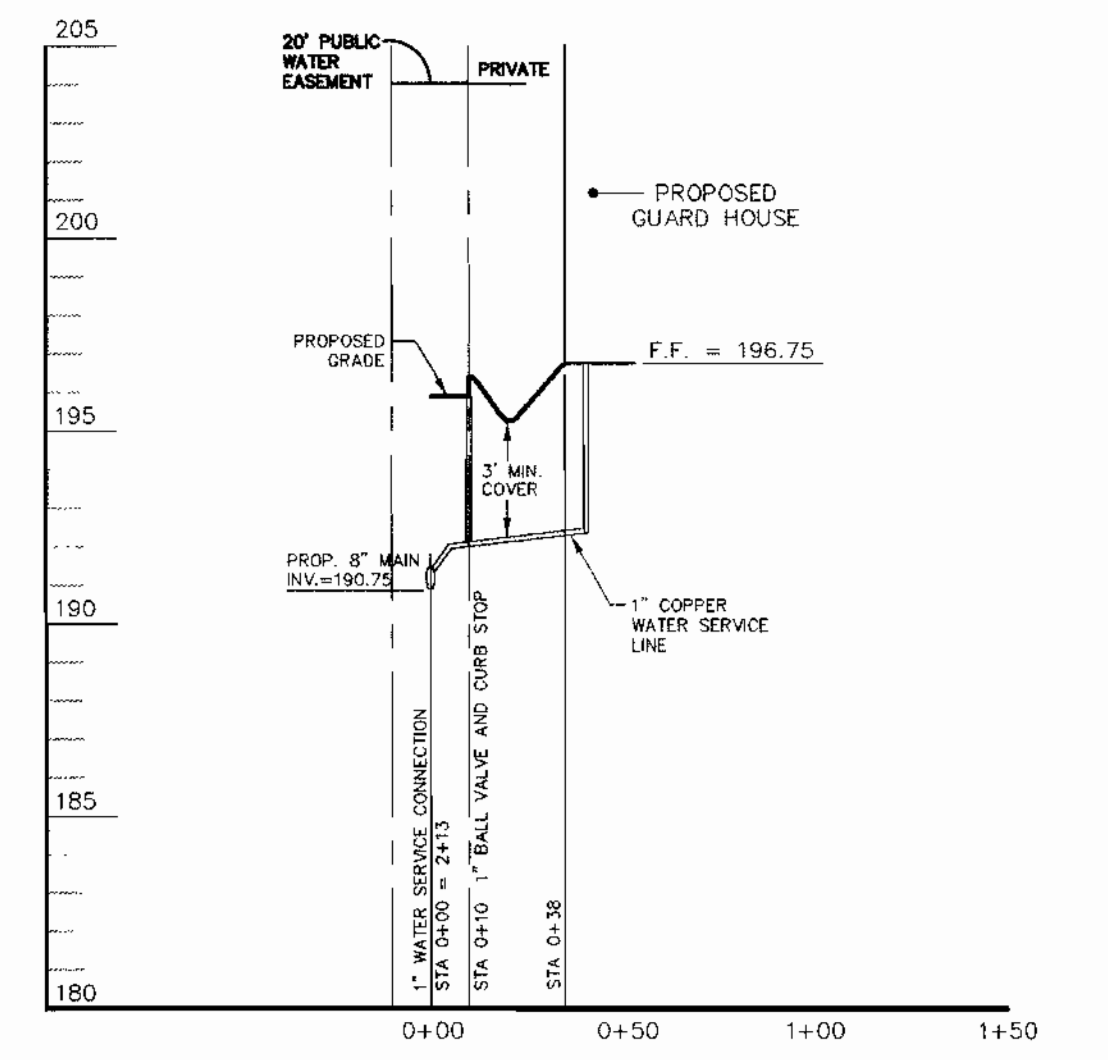
SANITARY SEWER CONNECTION PROFILE
SCALE: HORIZ. 1"=50'
VERT. 1"=5'



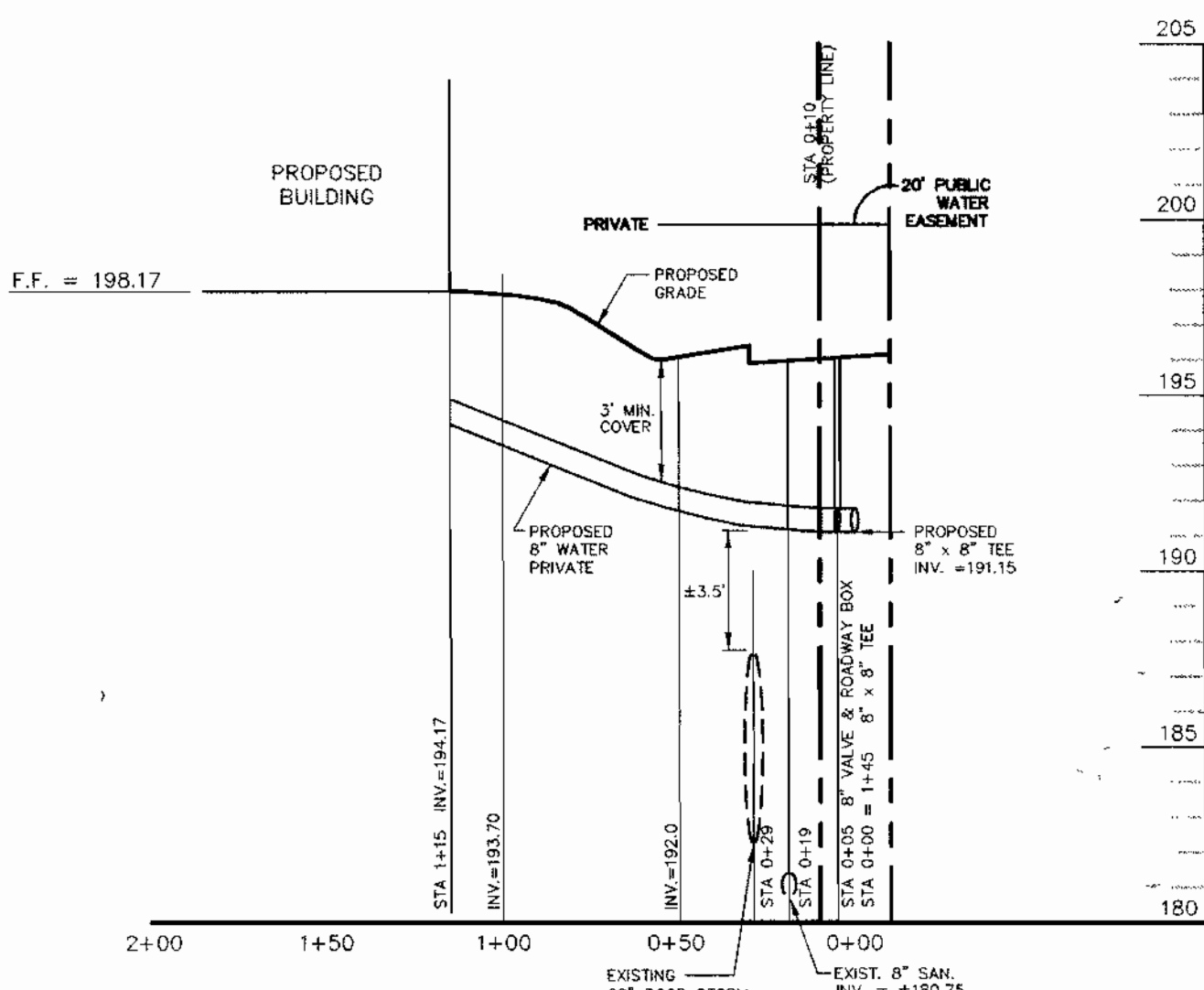
PUBLIC 6" FIRE HYDRANT NO. 1
SCALE: HORIZ. 1"=50'
VERT. 1"=5'



PUBLIC WATERMAIN PROFILE
SCALE: HORIZ. 1"=50'
VERT. 1"=5'



WATERHOUSE CONNECTION PROFILE (PARCEL B-1)
SCALE: HORIZ. 1"=50'
VERT. 1"=5'



WATERHOUSE CONNECTION PROFILE (PARCEL B-2)
SCALE: HORIZ. 1"=50'
VERT. 1"=5'

DEPARTMENT OF PUBLIC WORKS
HOWARD COUNTY, MARYLAND
Robert W. Deinger
CHIEF, BUREAU OF UTILITIES
10-23-01
DATE

DEPARTMENT OF PLANNING AND ZONING
HOWARD COUNTY, MARYLAND
Michael J. Deinger
CHIEF, DEVELOPMENT ENGINEERING DIVISION
10/23/01
DATE

WS
WEBBER/SMITH Associates, Inc.
DESIGN ENGINEERS
1857 William Penn Way, Suite 200
Lancaster, Pennsylvania 17601
Phone (717)-291-2266
Fax (717)-291-4401
Email: info@webbersmith.com
DRAWN BY: B.L.E.
CHECKED BY: B.E.L.
STATUS: P - PRELIMINARY; F - FINAL
3894-C601 - D - F
DRAWING NUMBER SIZE STATUS

THE INFORMATION CONTAINED ON THIS AND ANY RELATED DRAWING FILE SHALL NOT BE USED FOR ANY PURPOSE OTHER THAN THE CONVEYANCE OF INFORMATION FOR THE STATED CLIENT AND PROJECT WITHOUT THE EXPRESS WRITTEN CONSENT OF THE ENGINEER/ARCHITECT.
© 2001 WEBBER/SMITH Associates, Inc.

SYMBOL	DATE	REVISION	DRAWN	CHECKED
10/6/01	10/6/01	ASBUILT DATA ADDED TO PLAN	H.C.I.	
10/8/01	10/8/01	REVISED PER COUNTY COMMENTS	BLE	BEL
7/31/01	7/31/01	ORIGINAL ISSUE	BLE	BEL

PLAN AND PROFILES
CONTRACT NO. 24-3992-D
600 SCALE MAP NO. 43
BLOCK NO. 1
3894C601.dwg 10/8/01 3:04:38 pm EST

PUBLIC WATER & SEWER MAIN
MARYLAND FOOD CENTER AUTHORITY
CROSS DOCK/TRAILER PARKING
BLOCK B, PARCEL B-1, B-2
HOWARD CO., MARYLAND
ELECTION DISTRICT: 6
DATE: JUNE 31, 2001
SHEET 2 OF 2