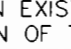


GENERAL NOTES

PART I

- APPROXIMATE LOCATION OF EXISTING MAINS ARE SHOWN. THE CONTRACTOR SHALL TAKE ALL NECESSARY PRECAUTIONS TO PROTECT EXISTING MAINS AND SERVICES AND MAINTAIN UNINTERRUPTED SUPPLY. ANY DAMAGE INCURRED SHALL BE REPAIRED IMMEDIATELY TO THE SATISFACTION OF THE ENGINEER AT THE CONTRACTOR'S EXPENSE.
- ALL HORIZONTAL CONTROLS ARE BASED ON MARYLAND STATE COORDINATES.
- ALL VERTICAL CONTROLS ARE BASED ON U.S.G.S DATA.
- ALL PIPE ELEVATIONS SHOWN ARE INVERT ELEVATIONS.
- CLEAR ALL UTILITIES BY A MINIMUM OF 6". CLEAR ALL POLES BY 2'-0" MINIMUM OR TUNNEL AS REQUIRED. THE OWNER HAS CONTACTED THE UTILITY COMPANIES AND HAS MADE ARRANGEMENTS FOR BRACING OF POLES AS SHOWN ON DRAWINGS. IN THE EVENT THE CONTRACTOR'S WORK REQUIRES THE BRACING OF ADDITIONAL POLES, ANY COST INCURRED BY THE OWNER FOR BRACING OF ADDITIONAL POLES OR DAMAGES SHALL BE DEDUCTED FROM MONEY OWED THE CONTRACTOR. THE CONTRACTOR SHALL COORDINATE WITH THE UTILITY COMPANIES TO SCHEDULE THE BRACING OF THE POLES.
- FOR DETAILS NOT SHOWN ON THE DRAWINGS, AND FOR MATERIALS AND CONSTRUCTION METHODS USE HOWARD COUNTY DESIGN MANUAL, VOLUME IV, STANDARD SPECIFICATIONS AND DETAILS FOR CONSTRUCTION (LATEST EDITION). THE CONTRACTOR SHALL HAVE A COPY OF VOLUME IV ON THE JOB.
- WHERE TEST PITS HAVE BEEN MADE ON EXISTING UTILITIES, THEY ARE NOTED BY THE SYMBOL . THE LOCATION OF THE TEST PIT, A NOTE OR NOTES CONTAINING THE RESULTS OF THE TEST PIT OR PITS IS INCLUDED ON THE DRAWINGS. EXISTING UTILITIES IN THE VICINITY OF THE PROPOSED WORK FOR WHICH TEST PITS HAVE NOT BEEN MADE SHALL BE LOCATED BY THE CONTRACTOR TWO WEEKS IN ADVANCE OF CONSTRUCTION.
- THE CONTRACTOR SHALL NOTIFY THE FOLLOWING UTILITY COMPANIES OR AGENCIES AT LEAST FIVE WORKING DAYS BEFORE STARTING WORK SHOWN THESE PLANS:

C. & P. TELEPHONE	597-8585
A. & T.	865-3803
STATE HIGHWAY ADMINISTRATION	531-5533
B.G.&E. CO. CONTRACTOR SERVICES	850-4620
B.G.&E. CO. UNDER GROUND DAMAGE CONTROL	787-9068
MISS UTILITY	1-800-257-7777
COLONIAL PIPELINE CO.	795-1390
HOWARD COUNTY DEPARTMENT OF PUBLIC WORKS	313-4900
BUREAU OF UTILITIES	
- TREES AND SHRUBS ARE TO BE PROTECTED FROM DAMAGE TO THE MAXIMUM EXTENT. TREES AND SHRUBS LOCATED WITHIN THE CONSTRUCTION STRIP ARE NOT TO BE REMOVED OR DAMAGED BY THE CONTRACTOR.
- THE CONTRACTOR SHALL REMOVE TREES, STUMPS AND ROOTS ALONG LINE OF EXCAVATION. PAYMENT FOR SUCH REMOVAL SHALL BE INCLUDED IN THE UNIT PRICE BID FOR THE CONSTRUCTION OF THE MAIN.
- THE CONTRACTOR SHALL NOTIFY THE BUREAU OF HIGHWAYS, HOWARD COUNTY, AT (410) 313-2450 AT LEAST FIVE WORKING DAYS BEFORE ANY OPEN CUT OF ANY COUNTY ROAD OR BORING/JACKING OPERATION IN COUNTY ROADS FOR LAYING WATER/SEWER MAIN OR HOUSE CONNECTIONS. THE APPROVAL OF THESE DRAWINGS WILL CONSTITUTE COMPLIANCE WITH DPW REQUIREMENTS PER SECTION 18.114(a) OF THE HOWARD COUNTY CODE.

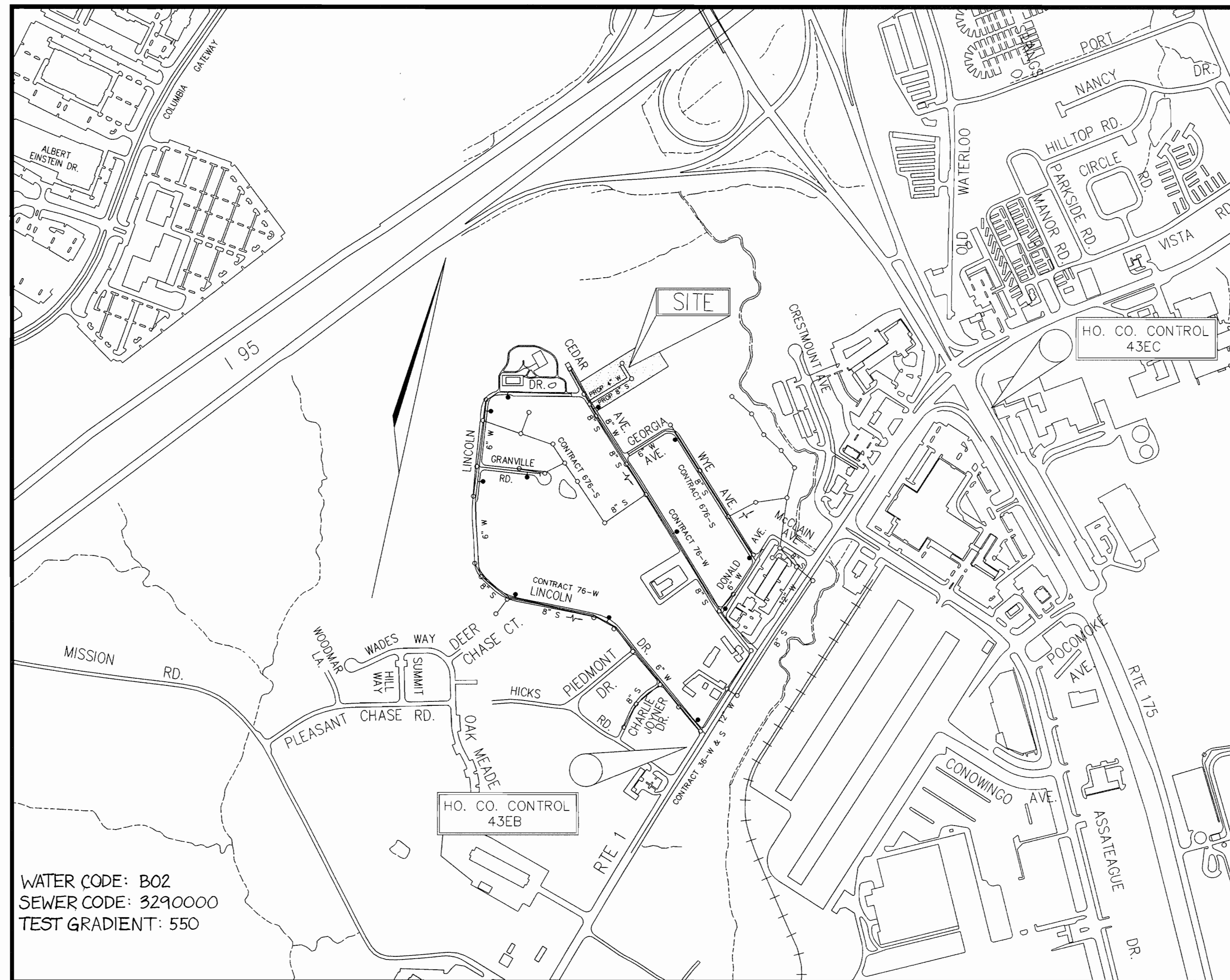
PART II - WATER

- ALL WATER MAINS TO BE D.I.P. CLASS 52 UNLESS OTHERWISE NOTED.
- TOPS OF ALL WATER MAINS TO HAVE A MINIMUM OF 3'-1/2" COVER UNLESS OTHERWISE NOTED.
- VALVES ADJACENT TO TEES SHALL BE STRAPPED TO TEES.
- ALL FITTINGS SHALL BE BUTTRESSED OR ANCHORED WITH CONCRETE IN ACCORDANCE WITH THE STANDARD DETAILS UNLESS OTHERWISE PROVIDED FOR ON THE DRAWINGS.
- FIRE HYDRANTS SHALL BE SET TO THE BURY LINE ELEVATIONS SHOWN ON THE DRAWINGS. ALL FIRE HYDRANTS SHALL BE RESTRAINED AND BUTTRESSED WITH CONCRETE IN ACCORDANCE WITH STANDARD DETAILS. SOIL AROUND FIRE HYDRANT SHALL BE COMPACTED IN ACCORDANCE WITH SECTION 1000 AND 1005 OF THE STANDARD SPECIFICATIONS.
- THE CONTRACTOR SHALL NOT OPERATE ANY WATER MAIN VALVES ON THE EXISTING WATER SYSTEM.
- ALL WATER HOUSE CONNECTIONS SHALL BE FOR INSIDE METER SETTING UNLESS OTHERWISE NOTED ON PLANS OR IN SPECIFICATIONS.

PART III - SEWER

- FORCE MAINS SHALL BE DUCTILE IRON MINIMUM CLASS 52 WITH DOUBLE CEMENT LINING.
- THE CONTRACTOR SHALL PROVIDE A JOINT IN ALL SEWER MAINS WITHIN 2'-0" OF EXTERIOR MANHOLE WALL.
- ALL MANHOLES SHALL BE 4'-0" INSIDE DIAMETER UNLESS OTHERWISE NOTED.
- MANHOLES SHOWN WITH 12" AND 16" WALLS ARE FOR BRICK MANHOLES ONLY.
- MANHOLES DESIGNATED W.T. IN PLAN AND PROFILE SHALL HAVE WATERTIGHT FRAME AND COVERS, STANDARD DETAIL 05.52. WHERE WATERTIGHT MANHOLE FRAME AND COVER IS USED, SET TOP OF FRAME 18" ABOVE FINISHED GRADE UNLESS OTHERWISE NOTED ON THE DRAWINGS.
- HOUSE(S) WITH THE SYMBOL "C.N.S." INDICATES THAT CELLAR CANNOT BE SERVED.

TYPE OF BUILDING:	RESIDENTIAL
NO. OF UNITS/PARCELS:	7
NO. OF WATER HOUSE CONNECTIONS:	7
NO. OF SEWER HOUSE CONNECTIONS:	7
DRAINAGE AREA:	LITTLE PATUXENT
TREATMENT PLAN:	LITTLE PATUXENT



LOCATION PLAN
SCALE: 1"=600'

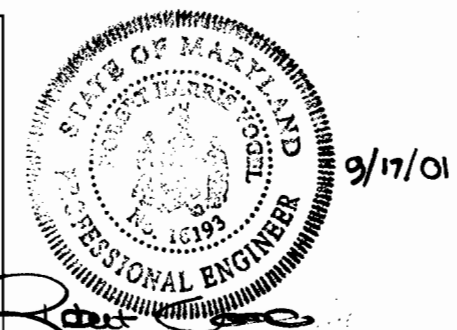
SEDIMENT CONTROL MEASURES WILL BE IMPLEMENTED IN ACCORDANCE WITH SECTION 219 OF THE SPECIFICATIONS AND WITH FINAL PLAN. **+GP-02-41**

THIS DEVELOPMENT IS APPROVED FOR SOIL EROSION AND SEDIMENT CONTROL BY THE HOWARD COUNTY SOIL CONSERVATION DISTRICT.

REVIEWED FOR HOWARD COUNTY SOIL CONSERVATION DISTRICT AND MEETS TECHNICAL REQUIREMENTS.

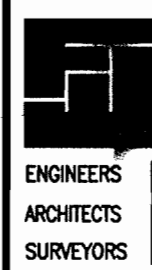
John Robertson 10/3/01
SOIL CONSERVATION DISTRICT

Jim Meyer 10/3/01
U.S. SOIL CONSERVATION DISTRICT



DEPARTMENT OF PUBLIC WORKS
HOWARD COUNTY, MARYLAND

DEPARTMENT OF PLANNING & ZONING
HOWARD COUNTY, MARYLAND



FREDERICK WARD ASSOCIATES, INC.
7125 Riverwood Drive Columbia, Maryland 21046-2354
Phone: 410-290-9550 Fax: 410-720-6226
Bel Air, Maryland Columbia, Maryland Warrenton, Virginia

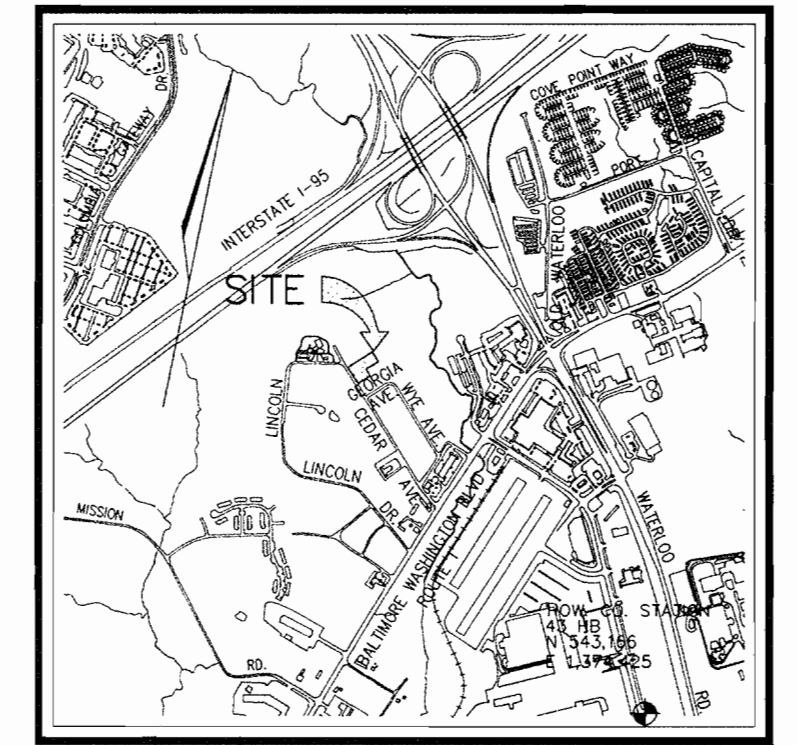
DES: RJ
DRN: JT
CHK: JCO
DATE: JULY 2001

TITLE SHEET

THE CEDARS
CONTRACT NO. 24-3983-D

SCALE AS SHOWN

SHEET 1 OF 2



VICINITY MAP
SCALE: 1"=2000'

QUANTITIES

NAME OF UTILITY CONTRACTOR :				
SURVEY AND DRAFTING DIVISION AS-BUILT DATE :				
ITEMS	QUANTITIES ESTIMATED	AS-BUILT		
		QUANTITIES	TYPE	MANUFACTURER/SUPPLIER
8" SEWER MAIN	343 LF			
MANHOLE	3 EA.			
4" CAP & BUTTRESS	1 EA.			
4" SHC	100 LF			
4" WATER MAIN	309 LF			
1" WHC	12 LF			
1-1/2" WHC	45 LF			
8" X 4" TEE	1 EA.			

BENCHMARKS

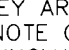
43EB	N= 545963.658 FT	E= 1371573.830 FT	ELEV.= 216.991 FT
43EC	N= 547821.276 FT	E= 1372882.447 FT	ELEV.= 220.369 FT

TAX MAP #43 GRID 8
6TH ELECTION DISTRICT

PARCEL 608 & 142
HOWARD COUNTY, MARYLAND

GENERAL NOTES

PART I

- APPROXIMATE LOCATION OF EXISTING MAINS ARE SHOWN. THE CONTRACTOR SHALL TAKE ALL NECESSARY PRECAUTIONS TO PROTECT EXISTING MAINS AND SERVICES AND MAINTAIN UNINTERRUPTED SUPPLY. ANY DAMAGE INCURRED SHALL BE REPAIRED IMMEDIATELY TO THE SATISFACTION OF THE ENGINEER AT THE CONTRACTOR'S EXPENSE.
- ALL HORIZONTAL CONTROLS ARE BASED ON MARYLAND STATE COORDINATES.
- ALL VERTICAL CONTROLS ARE BASED ON U.S.G.S DATA.
- ALL PIPE ELEVATIONS SHOWN ARE INVERT ELEVATIONS.
- CLEAR ALL UTILITIES BY A MINIMUM OF 6". CLEAR ALL POLES BY 2'-0" MINIMUM OR TUNNEL AS REQUIRED. THE OWNER HAS CONTACTED THE UTILITY COMPANIES AND HAS MADE ARRANGEMENTS FOR BRACING OF POLES AS SHOWN ON DRAWINGS. IN THE EVENT THE CONTRACTOR'S WORK REQUIRES THE BRACING OF ADDITIONAL POLES, ANY COST INCURRED BY THE OWNER FOR BRACING OF ADDITIONAL POLES OR DAMAGES SHALL BE DEDUCTED FROM MONEY OWED THE CONTRACTOR. THE CONTRACTOR SHALL COORDINATE WITH THE UTILITY COMPANIES TO SCHEDULE THE BRACING OF THE POLES.
- FOR DETAILS NOT SHOWN ON THE DRAWINGS, AND FOR MATERIALS AND CONSTRUCTION METHODS USE HOWARD COUNTY DESIGN MANUAL, VOLUME IV, STANDARD SPECIFICATIONS AND DETAILS FOR CONSTRUCTION (LATEST EDITION). THE CONTRACTOR SHALL HAVE A COPY OF VOLUME IV ON THE JOB.
- WHERE TEST PITS HAVE BEEN MADE ON EXISTING UTILITIES, THEY ARE NOTED BY THE SYMBOL  WITH THE LOCATION OF THE TEST PIT. A NOTE OR NOTES CONTAINING THE RESULTS OF THE TEST PIT OR PITS IS INCLUDED ON THE DRAWINGS. EXISTING UTILITIES IN THE VICINITY OF THE PROPOSED WORK FOR WHICH TEST PITS HAVE NOT BEEN DUG SHALL BE LOCATED BY THE CONTRACTOR TWO WEEKS IN ADVANCE OF CONSTRUCTION.
- THE CONTRACTOR SHALL NOTIFY THE FOLLOWING UTILITY COMPANIES OR AGENCIES AT LEAST FIVE WORKING DAYS BEFORE STARTING WORK SHOWN THESE PLANS:

C. & P. TELEPHONE	597-8888
A.T. & T.	865-3803
STATE HIGHWAY ADMINISTRATION	531-5533
B.G.&E. CO. CONTRACTOR SERVICES	850-4620
B.G.&E. CO. UNDER GROUND DAMAGE CONTROL	787-9068
MISS. UTILITY	1-800-257-7777
COLONIAL PIPELINE CO.	795-1390
HOWARD COUNTY DEPARTMENT OF PUBLIC WORKS BUREAU OF UTILITIES	313-4900
- TREES AND SHRUBS ARE TO BE PROTECTED FROM DAMAGE TO THE MAXIMUM EXTENT. TREES AND SHRUBS LOCATED WITHIN THE CONSTRUCTION STRIP ARE NOT TO BE REMOVED OR DAMAGED BY THE CONTRACTOR.
- THE CONTRACTOR SHALL REMOVE TREES, STUMPS AND ROOTS ALONG LINE OF EXCAVATION. PAYMENT FOR SUCH REMOVAL SHALL BE INCLUDED IN THE UNIT PRICE BID FOR THE CONSTRUCTION OF THE MAIN.
- THE CONTRACTOR SHALL NOTIFY THE BUREAU OF HIGHWAYS, HOWARD COUNTY, AT (410) 313-2450 AT LEAST FIVE WORKING DAYS BEFORE ANY OPEN CUT OF ANY COUNTY ROAD OR BORING/JACKING OPERATION IN COUNTY ROADS FOR LAYING WATER/SEWER MAIN OR HOUSE CONNECTIONS. THE APPROVAL OF THESE DRAWINGS WILL CONSTITUTE COMPLIANCE WITH DPW REQUIREMENTS PER SECTION 18.114(a) OF THE HOWARD COUNTY CODE.

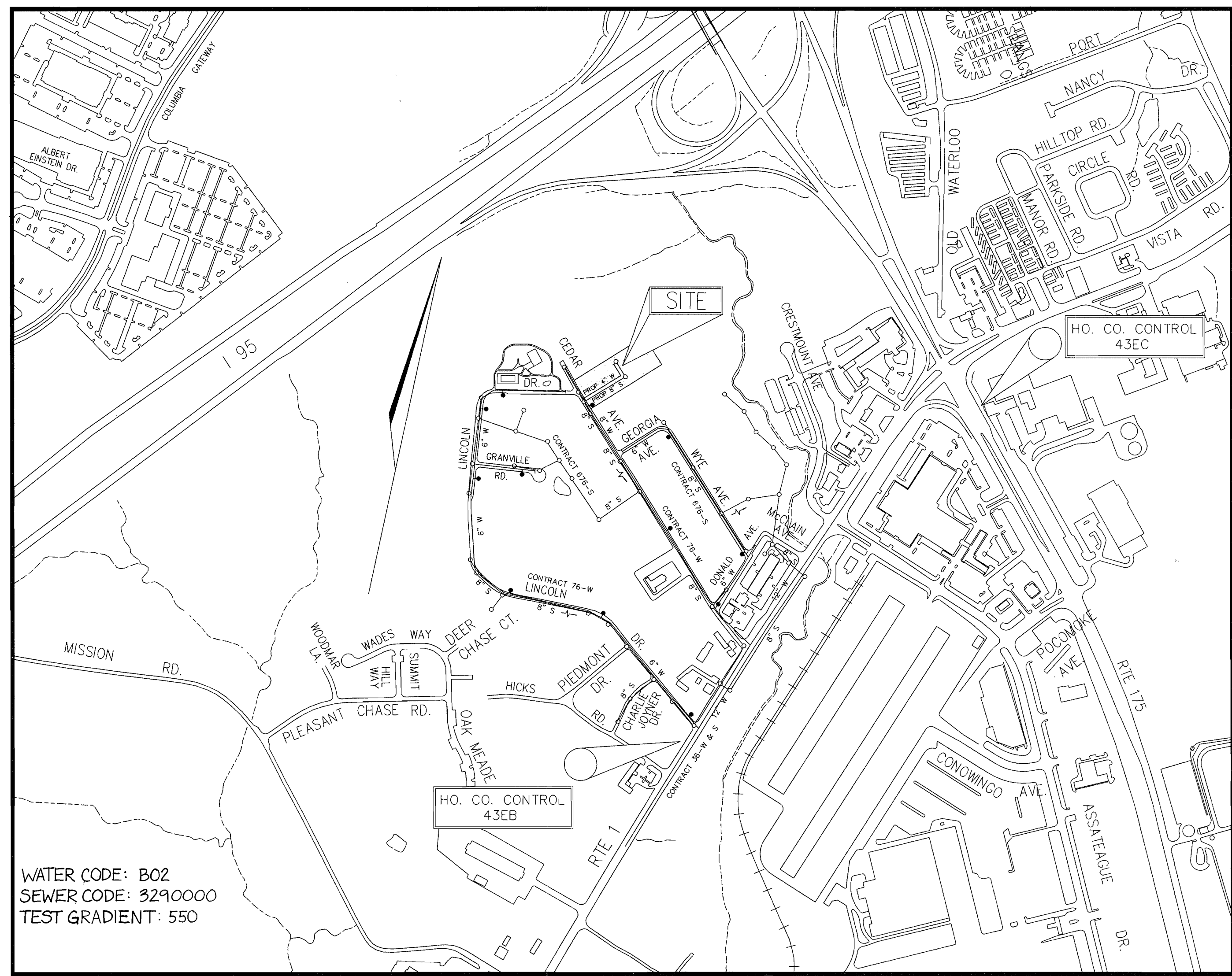
PART II - WATER

- ALL WATER MAINS TO BE D.I.P. CLASS 52 UNLESS OTHERWISE NOTED.
- TOPS OF ALL WATER MAINS TO HAVE A MINIMUM OF 3'-1/2" COVER UNLESS OTHERWISE NOTED.
- VALVES ADJACENT TO TEES SHALL BE STRAPPED TO TEES.
- ALL FITTINGS SHALL BE BUTTRESSED OR ANCHORED WITH CONCRETE IN ACCORDANCE WITH THE STANDARD DETAILS UNLESS OTHERWISE PROVIDED FOR ON THE DRAWINGS.
- FIRE HYDRANTS SHALL BE SET TO THE BURY LINE ELEVATIONS SHOWN ON THE DRAWINGS. ALL FIRE HYDRANTS SHALL BE RESTRAINED AND BUTTRESSED WITH CONCRETE IN ACCORDANCE WITH STANDARD DETAILS. SOIL AROUND FIRE HYDRANT SHALL BE COMPACTED IN ACCORDANCE WITH SECTION 1000 AND 1005 OF THE STANDARD SPECIFICATIONS.
- THE CONTRACTOR SHALL NOT OPERATE ANY WATER MAIN VALVES ON THE EXISTING WATER SYSTEM.
- ALL WATER HOUSE CONNECTIONS SHALL BE FOR INSIDE METER SETTING UNLESS OTHERWISE NOTED ON PLANS OR IN SPECIFICATIONS.

PART III - SEWER

- FORCE MAINS SHALL BE DUCTILE IRON MINIMUM CLASS 52 WITH DOUBLE CEMENT LINING.
- THE CONTRACTOR SHALL PROVIDE A JOINT IN ALL SEWER MAINS WITHIN 2'-0" OF EXTERIOR MANHOLE WALL.
- ALL MANHOLES SHALL BE 4'-0" INSIDE DIAMETER UNLESS OTHERWISE NOTED.
- MANHOLES SHOWN WITH 12" AND 16" WALLS ARE FOR BRICK MANHOLES ONLY.
- MANHOLES DESIGNATED W.T. IN PLAN AND PROFILE SHALL HAVE WATER TIGHT FRAME AND COVERS, STANDARD DETAIL 05.52 WHERE WATER TIGHT MANHOLE FRAME AND COVER IS USED. SET TOP OF FRAME 18" ABOVE FINISHED GRADE UNLESS OTHERWISE NOTED ON THE DRAWINGS.
- HOUSE(S) WITH THE SYMBOL "C.N.S." INDICATES THAT CELLAR CANNOT BE SERVED.

TYPE OF BUILDING:	RESIDENTIAL
NO. OF UNITS/PARCELS:	7
NO. OF WATER HOUSE CONNECTIONS:	7
NO. OF SEWER HOUSE CONNECTIONS:	7
DRAINAGE AREA:	LIVE PATIENT
TREATMENT PLAN:	PATIENT



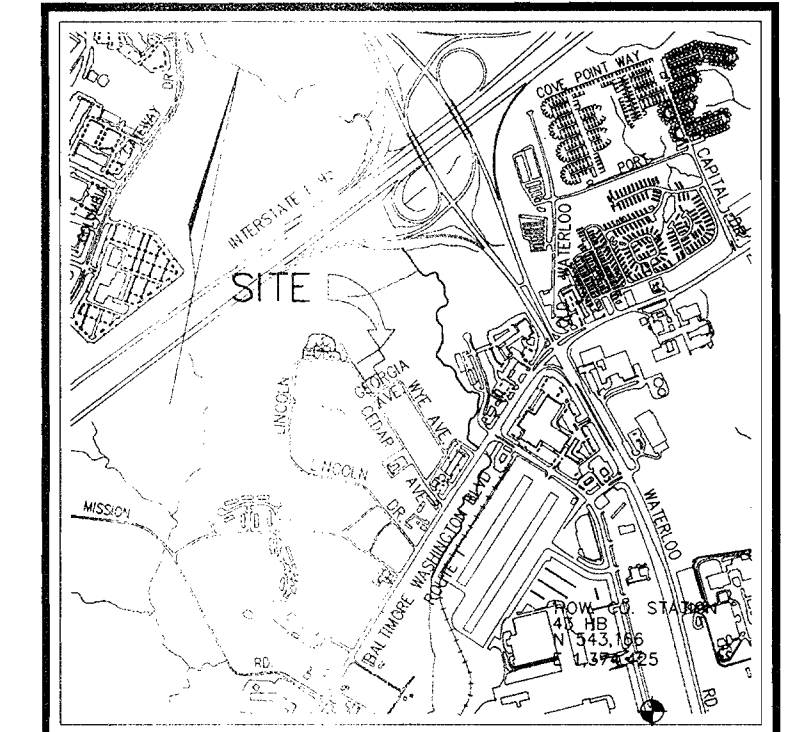
WATER CODE: B02
SEWER CODE: 3290000
TEST GRADIENT: 550

LOCATION PLAN
SCALE: 1"=600'

THE CEDARS

HOWARD COUNTY, MARYLAND

CONTRACT NO. 24-3983-D



VICINITY MAP
SCALE: 1"=2000'

QUANTITIES					
NAME OF UTILITY CONTRACTOR : UTILITIES UNLIMITED					
SURVEY AND DRAFTING DIVISION AS-BUILT DATE :					
ITEMS	QUANTITIES ESTIMATED	AS-BUILT			
		QUANTITIES	TYPE	MANUFACTURER/SUPPLIER	
8" SEWER MAIN	343 LF	276 L.F.	SDR-35 PVC	J-M MANUFACTURING	U.S. FILTER
MANHOLE	3 EA.	3	PRECAST	FREDERICK PRECAST	
4" CAP & BUTTRESS	1 EA.	-	-	-	-
4" SHC	100 LF	50 L.F.	SDR-35 PVC	J-M MANUFACTURING	U.S. FILTER
4" WATER MAIN	309 LF	310 L.F.	CL 52 D.I.P.	ATLANTIC STATES	"
1" WHC	12 LF	26 L.F.	TYPE 'K'	READING TUBE	"
1-1/2" WHC	45 LF	58 L.F.	TYPE 'K'	READING TUBE	"
8" X 4" TEE	1 EA.	1	STAIN STEEL	MUELLER Co.	U.S. FILTER

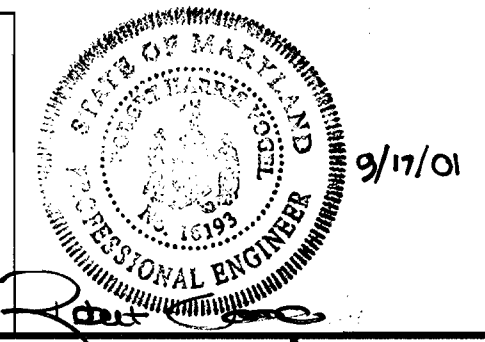
BENCHMARKS

43EB	N= 545963.658 FT	E= 1371573.830 FT	ELEV.= 216.991 FT
43EC	N= 547821.276 FT	E= 1372882.447 FT	ELEV.= 220.369 FT

SEDIMENT CONTROL MEASURES WILL BE IMPLEMENTED IN ACCORDANCE WITH SECTION 219 OF THE SPECIFICATIONS AND WITH FINAL PLAN. **+GP-02-41**

THIS DEVELOPMENT IS APPROVED FOR SOIL EROSION AND SEDIMENT CONTROL BY THE HOWARD COUNTY SOIL CONSERVATION DISTRICT.
John Robertson 10/3/01 DATE

REVIEWED FOR HOWARD COUNTY SOIL CONSERVATION DISTRICT AND MEETS TECHNICAL REQUIREMENTS.
Jim Mays 10/3/01 DATE



DEPARTMENT OF PUBLIC WORKS
HOWARD COUNTY, MARYLAND
Robert Bainger 9-20-01 DATE
CHIEF, BUREAU OF UTILITIES

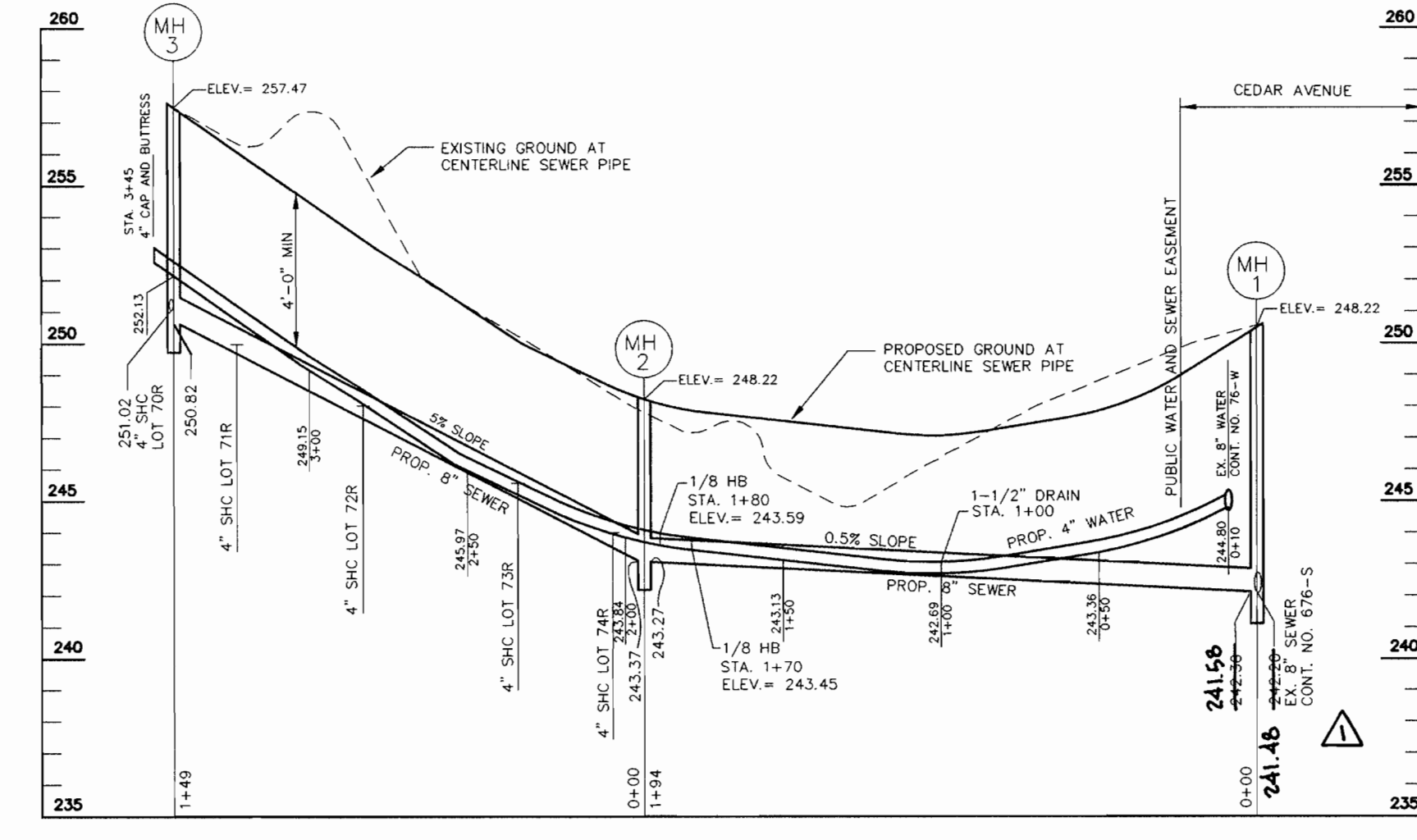
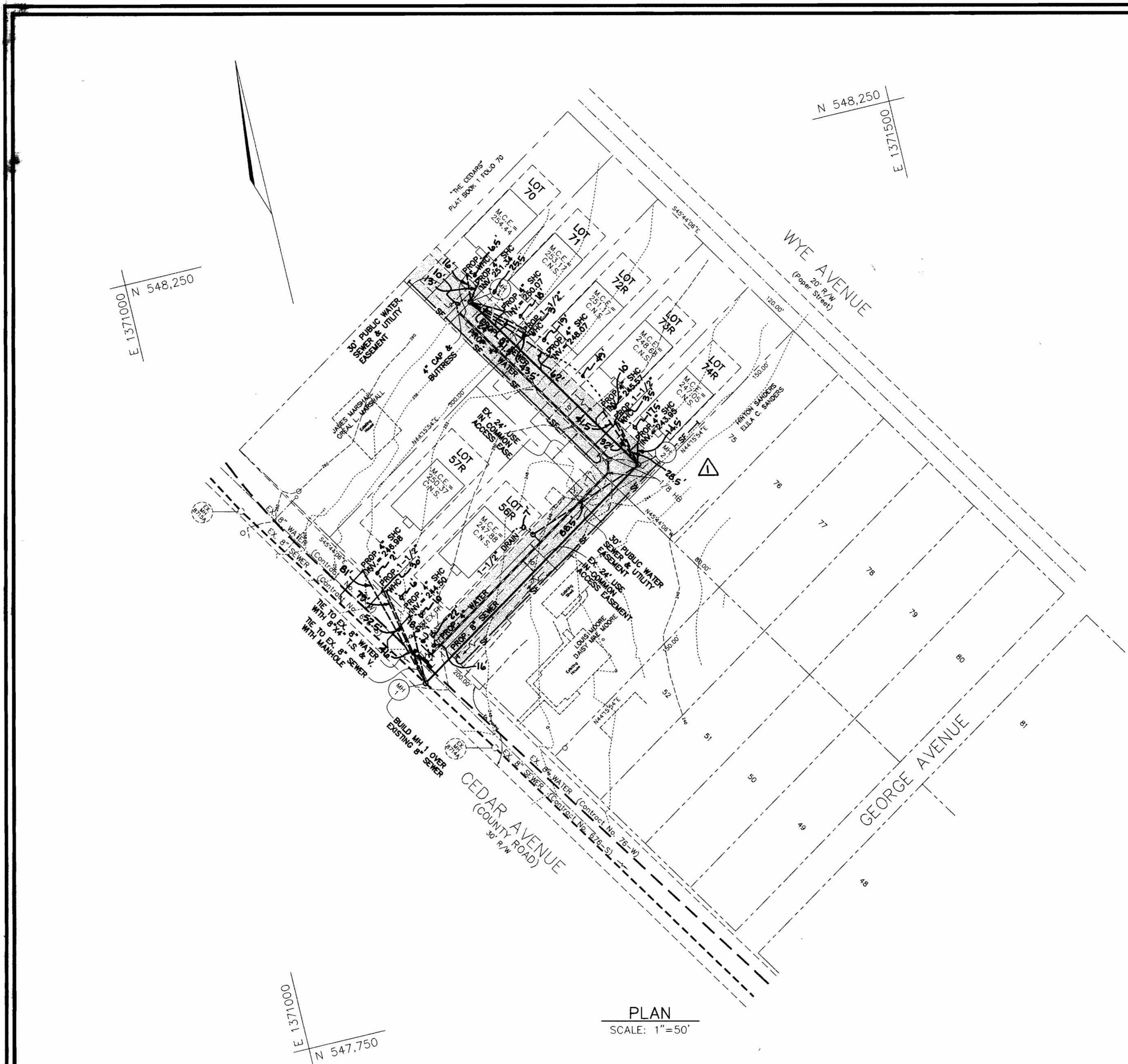
DEPARTMENT OF PLANNING & ZONING
HOWARD COUNTY, MARYLAND
William C. ... 10/4/01 DATE
CHIEF, DEVELOPMENT ENGINEERING DIVISION

FREDERICK WARD ASSOCIATES, INC.
7125 Riverwood Drive Columbia, Maryland 21046-2354
Phone: 410-290-9550 Fax: 410-720-6226
Bel Air, Maryland Columbia, Maryland Warrenton, Virginia

DES: RJ	DRN: JT	CHK: JCO	JMT	PER AS-BUILT	1-11-02
DATE: JULY 2001	BY: NO.	REVISION	DATE	600' SCALE MAP NO. 43	BLOCK NO. 14

TITLE SHEET

THE CEDARS
CONTRACT NO. 24-3983-D
SCALE AS SHOWN
SHEET 1 OF 2
TAX MAP #43 GRID 8
6TH ELECTION DISTRICT
PARCEL 508 & 142
HOWARD COUNTY, MARYLAND



WATER HOUSE CONNECTIONS

LOT #	FROM	TO	DISTANCE
56R	MH #1	W.H.C. 56R	52.5 L.F.
56R	S.H.C. 56R	W.H.C. 56R	6.0 L.F.
56R	W.H.C. 57R	W.H.C. 56R	30.0 L.F.
57R	MH #1	W.H.C. 57R	79.0 L.F.
57R	S.H.C. 57R	W.H.C. 57R	2.0 L.F.
57R	W.H.C. 56R	W.H.C. 57R	30.0 L.F.
4" VALVE	MH #1	4" VALVE	16.0 L.F.
4" VALVE	EXIST. F.H.	4" VALVE	22.0 L.F.
4" VALVE	EXIST. F.H.V.	4" VALVE	18.5 L.F.
1 1/2" BLOW-OFF	MH #2	1 1/2" BLOW-OFF	88.5 L.F.
1 1/2" BLOW-OFF	BUDG. CHN.	1 1/2" BLOW-OFF	7.0 L.F.
70R	MH #3	W.H.C. 70R	16.0 L.F.
70R	S.H.C. 70R	W.H.C. 70R	6.5 L.F.
71R	MH #3	W.H.C. 71R	41.5 L.F.
71R	S.H.C. 71R	W.H.C. 71R	18.0 L.F.
71R	W.H.C. 72R	W.H.C. 71R	3.0 L.F.
72R	MH #3	W.H.C. 72R	43.5 L.F.
72R	W.H.C. 71R	W.H.C. 72R	3.0 L.F.
72R	S.H.C. 72R	W.H.C. 72R	19.0 L.F.
73R	MH #2	W.H.C. 73R	32.0 L.F.
73R	S.H.C. 73R	W.H.C. 73R	10.0 L.F.
73R	W.H.C. 74R	W.H.C. 73R	3.5 L.F.
74R	MH #2	W.H.C. 74R	28.5 L.F.
74R	W.H.C. 73R	W.H.C. 74R	3.5 L.F.
74R	S.H.C. 74R	W.H.C. 74R	17.5 L.F.

SEWER HOUSE CONNECTIONS

LOT #	FROM	TO	DISTANCE
57R	MH #1	S.H.C. 57R	81.0 L.F.
57R	W.H.C. 57R	S.H.C. 57R	2.0 L.F.
56R	MH #1	S.H.C. 56R	46.0 L.F.
56R	W.H.C. 56R	S.H.C. 56R	6.0 L.F.
56R	EXIST. F.H.	S.H.C. 56R	10.0 L.F.
70R	MH #3	S.H.C. 70R	13.0 L.F.
70R	W.H.C. 70R	S.H.C. 70R	6.5 L.F.
70R	S.H.C. 71R	S.H.C. 70R	25.5 L.F.
71R	MH #3	S.H.C. 71R	24.0 L.F.
71R	S.H.C. 70R	S.H.C. 71R	25.5 L.F.
71R	W.H.C. 71R	S.H.C. 71R	18.0 L.F.
72R	MH #3	S.H.C. 72R	62.0 L.F.
72R	W.H.C. 72R	S.H.C. 72R	19.0 L.F.
72R	S.H.C. 73R	S.H.C. 72R	49.0 L.F.
73R	MH #2	S.H.C. 73R	41.5 L.F.
73R	W.H.C. 73R	S.H.C. 73R	10.0 L.F.
73R	S.H.C. 72R	S.H.C. 73R	49.0 L.F.
74R	MH #2	S.H.C. 74R	14.5 L.F.
74R	W.H.C. 74R	S.H.C. 74R	17.5 L.F.

SEDIMENT CONTROL MEASURES WILL BE IMPLEMENTED IN ACCORDANCE WITH SECTION 219 OF THE SPECIFICATIONS AND WITH FINAL PLAN: **GP-02-41**

THIS DEVELOPMENT IS APPROVED FOR SOIL EROSION AND SEDIMENT CONTROL BY THE HOWARD COUNTY SOIL CONSERVATION DISTRICT.

REVIEWED FOR HOWARD COUNTY SOIL CONSERVATION DISTRICT AND MEETS TECHNICAL REQUIREMENTS.

John R. Robertson 10/3/01 DATE
Jim M. ... 10/3/01 DATE

DEPARTMENT OF PUBLIC WORKS HOWARD COUNTY, MARYLAND	DEPARTMENT OF PLANNING & ZONING HOWARD COUNTY, MARYLAND	FREDERICK WARD ASSOCIATES, INC. ENGINEERS ARCHITECTS SURVEYORS 7125 Riverwood Drive Columbia, Maryland 21046-2354 Phone: 410-290-9550 Fax: 410-720-6226 Bel Air, Maryland Columbia, Maryland Warrenton, Virginia	DES: RJ DRN: JT CHK: JCO DATE: JULY 2001	JMT BY NO. PER AS-BUILT	01-14-02	WATER AND SEWER PLAN AND PROFILE	SCALE AS SHOWN
<i>John R. Robertson</i> 9-20-01 DATE CHIEF, BUREAU OF UTILITIES	<i>Jim M. ...</i> 10/4/01 DATE CHIEF, DEVELOPMENT ENGINEERING DIVISION					600' SCALE MAP NO. 43 BLOCK NO. 14	SHEET 2 OF 2

TAX MAP #43 GRID 8 6TH ELECTION DISTRICT
 PARCEL 608 & 142 HOWARD COUNTY, MARYLAND

M:\PROJECTS\2017022\ENGR\DWG\3046533.dwg Nov 17 12:54:12 2001 JUS110