

# PUBLIC WATER AND SEWER PLANS

# NORTH LAUREL PARK

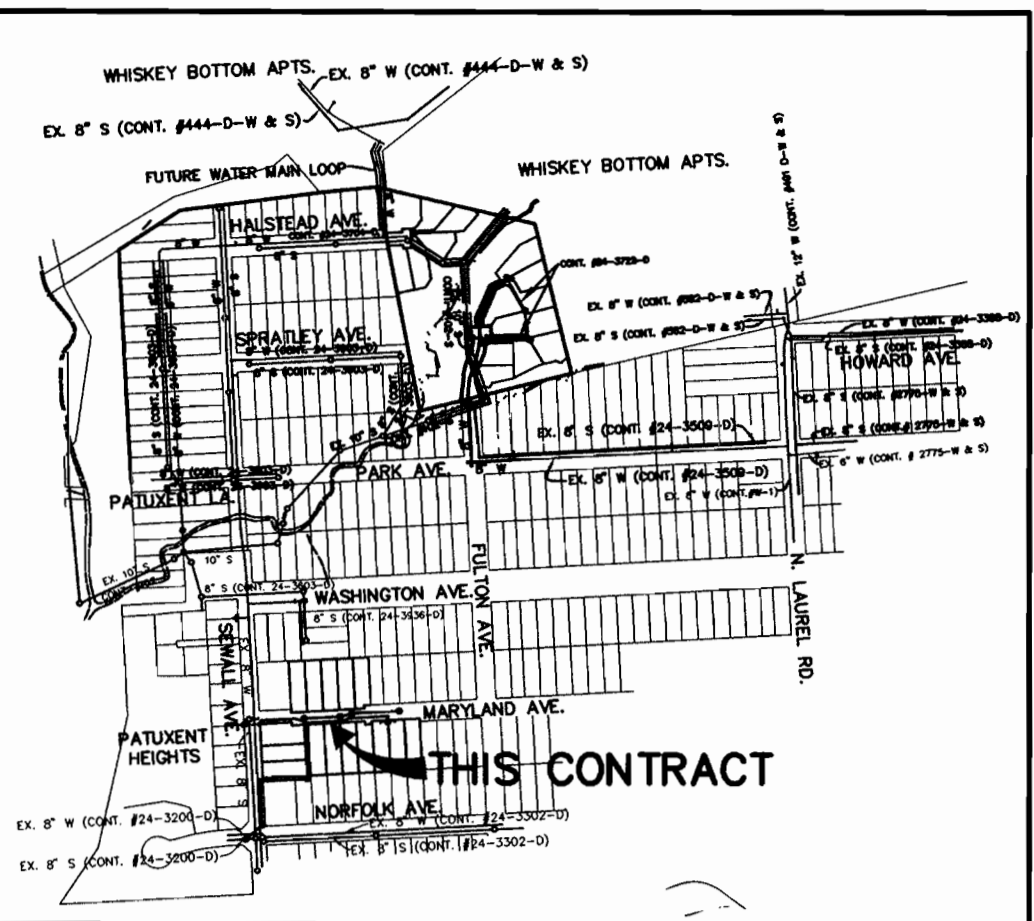
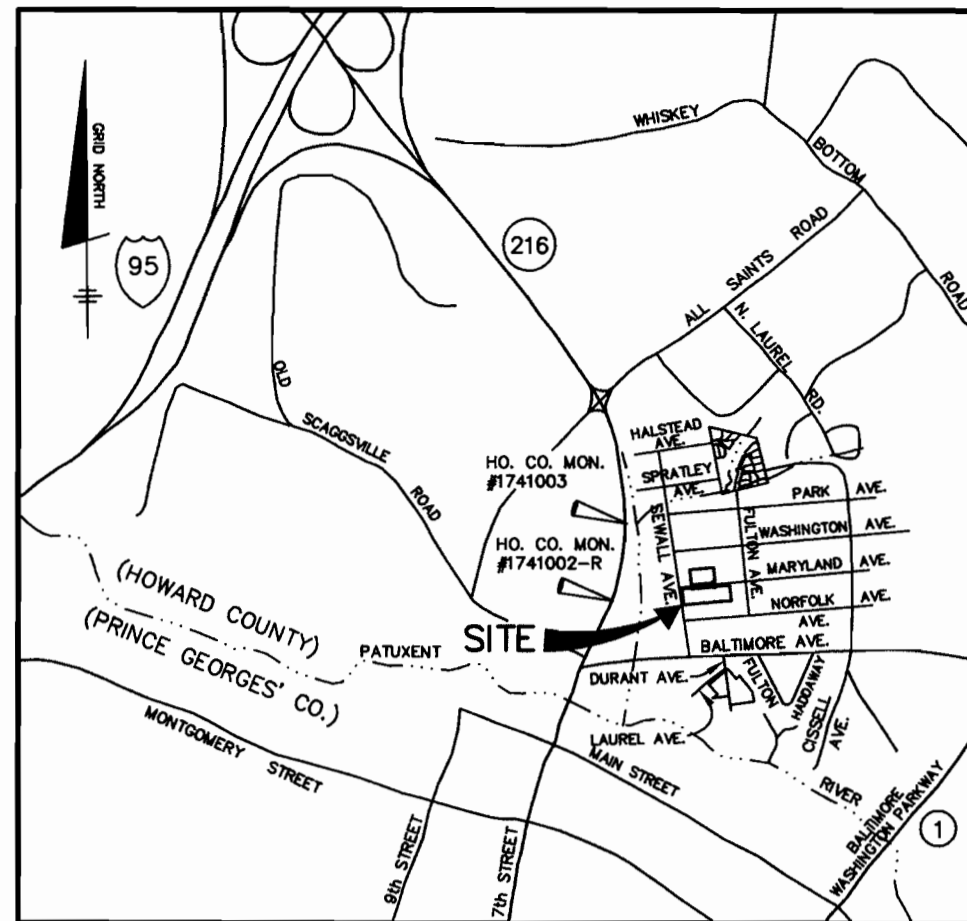
## BLOCK 'J' LOTS 17-21 AND BLOCK 'K' LOTS 4-10 AND 30-32

### 6th ELECTION DISTRICT HOWARD COUNTY, MARYLAND CONTRACT No. 24-3963-D

**BENCH MARKS NAD 27**  
 HO. CO. #1741003 NAD 27  
 CONCRETE MONUMENT ON WEST SIDE OF  
 ROUTE 216 AND 0.2' BELOW SURFACE  
 ELEV. 198.395

HO. CO. #1741002-R NAD 27  
 CONCRETE MONUMENT ON TOP OF BANK  
 EAST OF EAST EDGE OF MAC. OF ROUTE 216  
 FLUSH WITH SURFACE  
 ELEV. 197.368

SANITARY MANHOLE SCHEDULE		
MANHOLE	LOCATION	DESCRIPTION
1	CL STA. 3+52.98 SEWALL AVENUE, OFFSET 17.0' LEFT	TYPE 'B' DROP MANHOLE, HO.CO. STD. S-1.32
2	CL STA. 3+90.00 SEWALL AVENUE, OFFSET 20.0' RIGHT	STANDARD PRECAST MANHOLE, HO.CO. STD. G-5.11
3	CL STA. 5+30.00 SEWALL AVENUE, OFFSET 20.0' RIGHT	STANDARD PRECAST MANHOLE, HO.CO. STD. G-5.11
4	N 465970.49 E 842936.65	STANDARD PRECAST MANHOLE, HO.CO. STD. G-5.11
5	CL STA. 1+66.09 MARYLAND AVENUE, OFFSET 5.24' LEFT	STANDARD PRECAST MANHOLE, HO.CO. STD. G-5.11
6	CL STA. 2+80.16 MARYLAND AVENUE, OFFSET 7.0' LEFT	STANDARD PRECAST MANHOLE, HO.CO. STD. G-5.11
7	CL STA. 3+18.88 MARYLAND AVENUE, OFFSET 7.0' LEFT	STANDARD PRECAST MANHOLE, HO.CO. STD. G-5.11
8	CL STA. 4+67.38 MARYLAND AVENUE, OFFSET 7.0' LEFT	STANDARD PRECAST MANHOLE, HO.CO. STD. G-5.11

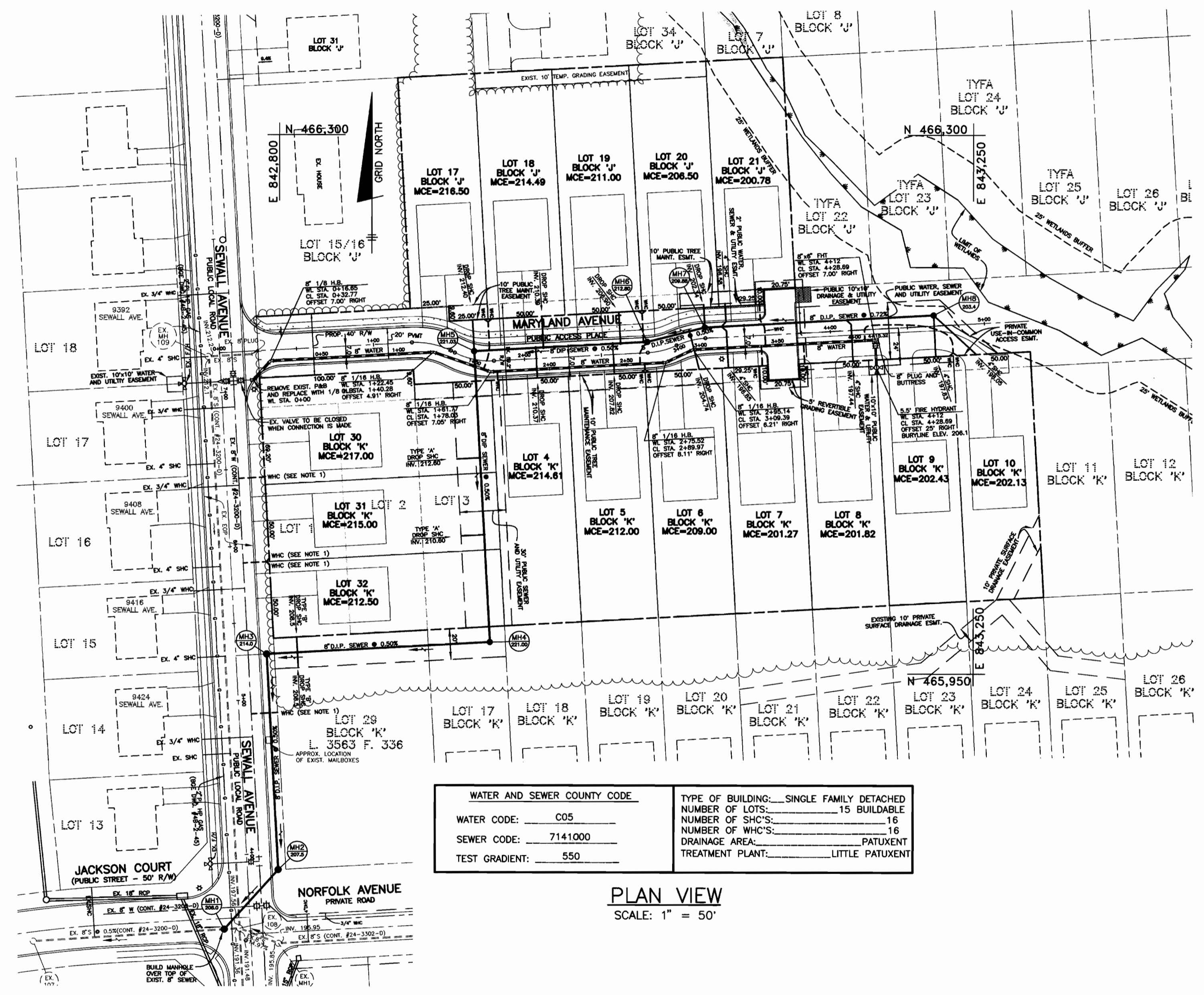


VICINITY MAP  
SCALE: 1" = 2000'

VICINITY MAP  
SCALE: 1" = 600'

QUANTITIES				
ITEMS	QUANTITIES ESTIMATED	AS-BUILT		
		QUANTITIES	TYPE	MANUF./SUPPLIER
8" WATER	415 LF			
6" VALVES	1 EA.			
FIRE HYDRANTS	1 EA.			
1" WHC	110 LF			
1-1/2" WHC	160 LF			
8" SEWER D.I.P.	825 LF			
MANHOLES	8			
4" SHC	131 LF			
4" DHC	178 LF			

NAME OF UTILITY CONTRACTOR: \_\_\_\_\_  
 SURVEY AND DRAFTING DIVISION AS-BUILT DATE: \_\_\_\_\_



WATER AND SEWER COUNTY CODE		TYPE OF BUILDING: SINGLE FAMILY DETACHED	
WATER CODE: C05		NUMBER OF LOTS: 15	BUILDABLE
SEWER CODE: 7141000		NUMBER OF SHC'S: 16	
TEST GRADIENT: 550		DRAINAGE AREA: PATUXENT	
		TREATMENT PLANT: LITTLE PATUXENT	

PLAN VIEW  
SCALE: 1" = 50'

**NOTE:**  
 CONTRACTOR SHALL MAINTAIN A MINIMUM OF ONE (1) LANE OF TRAFFIC OPEN AT ALL TIMES ALONG SEWALL AVENUE. IF THE WORK WITHIN SEWALL AVENUE TAKES MORE THAN ONE (1) DAY, THE CONTRACTOR SHALL INSTALL STEEL PLATES AT THE END OF EACH WORK DAY.

**NOTES:**  
 1. WATER HOUSE CONNECTIONS FOR BLOCK 'K' LOTS 29-32 ARE PROPOSED UNDER THIS CONTRACT. THE CONNECTIONS ARE TO BE MADE TO THE 8" WATER MAIN CONSTRUCTED UNDER CONTRACT NUMBER 24-3200-D.

**GENERAL NOTES**  
PART 1 - GENERAL

- APPROXIMATE LOCATION OF EXISTING MAINS ARE SHOWN. THE CONTRACTOR SHALL TAKE ALL NECESSARY PRECAUTIONS TO PROTECT EXISTING MAINS AND SERVICES AND MAINTAIN UNINTERRUPTED SUPPLY. ANY DAMAGE INCURRED SHALL BE REPAIRED IMMEDIATELY TO THE SATISFACTION OF THE ENGINEER AT THE CONTRACTOR'S EXPENSE.
- ALL HORIZONTAL CONTROLS ARE BASED ON MARYLAND STATE COORDINATES. (NORTH AMERICAN DATUM OF 1983 (NAD'83)).
- ALL VERTICAL CONTROLS ARE BASED ON U.S.G.S. DATA.
- ALL PIPE ELEVATIONS SHOWN ARE INVERT ELEVATIONS.
- CLEAR ALL UTILITIES BY A MINIMUM OF 6". CLEAR ALL POLES BY 2'-0" MINIMUM OR TUNNEL AS REQUIRED. THE OWNER HAS CONTACTED THE UTILITY COMPANIES AND HAS MADE ARRANGEMENTS FOR BRACING OF POLES AS SHOWN ON THE DRAWINGS. IN THE EVENT THE CONTRACTOR'S WORK REQUIRES THE BRACING OF ADDITIONAL POLES, ANY COST INCURRED BY THE OWNER FOR BRACING OF ADDITIONAL POLES OR DAMAGES SHALL BE DEDUCTED FROM MONEY OWED THE CONTRACTOR. THE CONTRACTOR SHALL COORDINATE WITH THE UTILITY COMPANIES TO SCHEDULE THE BRACING OF THE POLES.
- FOR DETAILS NOT SHOWN ON THE DRAWINGS, AND FOR MATERIALS AND CONSTRUCTION METHODS USE HOWARD COUNTY DESIGN MANUAL VOLUME IV, STANDARD SPECIFICATIONS AND DETAIL FOR CONSTRUCTION (LATEST EDITION). THE CONTRACTOR SHALL HAVE A COPY OF VOLUME IV ON THE JOB.
- WHERE TEST PITS HAVE BEEN MADE ON EXISTING UTILITIES, THEY ARE NOTED BY THE SYMBOL [ ] AT THE LOCATION OF THE TEST PIT. A NOTE OR NOTES CONTAINING THE RESULTS OF THE TEST PIT OR PITS IS INCLUDED ON THE DRAWINGS. EXISTING UTILITIES IN THE VICINITY OF THE PROPOSED WORK FOR WHICH TEST PITS HAVE NOT BEEN DUG SHALL BE LOCATED BY THE CONTRACTOR TWO WEEKS IN ADVANCE OF CONSTRUCTION OPERATIONS AT HIS OWN EXPENSE.
- CONTRACTOR SHALL NOTIFY THE FOLLOWING UTILITY COMPANIES OR AGENCIES AT LEAST FIVE (5) WORKING DAYS BEFORE STARTING WORK SHOWN ON THESE PLANS:  
 STATE HIGHWAY ADMINISTRATION.....410-531-5533  
 BGE CONTRACTOR SERVICES.....410-850-4620  
 BGE UNDERGROUND DAMAGE CONTROL.....410-291-4607  
 MISS UTILITY.....1-800-257-7777  
 COLONIAL PIPELINE CO.....410-549-4120  
 HOWARD CO. DEPT. OF PUBLIC WORKS.....410-313-4900  
 BUREAU OF UTILITIES.....1-800-446-5266  
 BELL ATLANTIC.....1-800-446-5266
- TREES AND SHRUBS ARE TO BE PROTECTED FROM DAMAGE TO MAXIMUM EXTENT. TREES AND SHRUBS LOCATED WITHIN THE CONSTRUCTION STRIP ARE NOT TO BE REMOVED OR DAMAGED BY THE CONTRACTOR.
- CONTRACTOR SHALL REMOVE TREES, STUMPS AND ROOTS ALONG LINE OF EXCAVATION. PAYMENT FOR SUCH REMOVAL SHALL BE INCLUDED IN THE UNIT PRICE BID FOR CONSTRUCTION OF THE MAIN.
- PLACE REGULATION "MEN WORKING" AND WARNING SIGNS AS REQUIRED TO COMPLY WITH MARYLAND STATE HIGHWAY ADMINISTRATION MANUAL OF TRAFFIC CONTROL FOR HIGHWAY MAINTENANCE OPERATIONS.
- THE CONTRACTOR SHALL NOTIFY THE BUREAU OF HIGHWAYS, HOWARD COUNTY, AT (410) 313-2450 AT LEAST FIVE (5) WORKING DAYS BEFORE ANY OPEN CUT OF ANY COUNTY ROAD OR BORING/JACKING OPERATION IN COUNTY ROADS FOR LAYING WATER/SEWER MAINS OR HOUSE CONNECTIONS. THE APPROVAL OF THESE DRAWINGS WILL CONSTITUTE COMPLIANCE WITH DPW REQUIREMENTS PER SECTION 18.114(c) OF THE HOWARD COUNTY CODE.

**PART 2 - WATER**

- ALL WATER MAINS TO BE D.I.P. CLASS 52 UNLESS OTHERWISE NOTED.
- TOPS OF ALL WATER MAINS TO HAVE A MINIMUM OF 3.5' COVER UNLESS OTHERWISE NOTED.
- VALVES ADJACENT TO TEES SHALL BE STRAPPED TO TEES.
- ALL FITTINGS SHALL BE BUTTRESSED OR ANCHORED WITH CONCRETE IN ACCORDANCE WITH THE STANDARD DETAILS UNLESS OTHERWISE PROVIDED FOR ON THE DRAWINGS.
- FIRE HYDRANTS SHALL BE SET TO THE BURY LINE ELEVATIONS SHOWN ON THE DRAWINGS. ALL FIRE HYDRANTS SHALL BE RESTRAINED WITH CONCRETE IN ACCORDANCE WITH STANDARD DETAILS. SOIL AROUND THE FIRE HYDRANT SHALL BE COMPACTED IN ACCORDANCE WITH SECTION 1000 AND 1005 OF THE STANDARD SPECIFICATIONS.
- THE CONTRACTOR SHALL NOT OPERATE ANY WATER MAIN VALVES ON THE EXISTING WATER SYSTEM.
- ALL WATER HOUSE CONNECTIONS SHALL BE FOR INSIDE METER SETTING UNLESS OTHERWISE NOTED ON PLANS OR IN SPECIFICATIONS. ALL WATER HOUSE CONNECTIONS SHALL BE 1 INCH.
- FOR SPRINKLER SYSTEM FOR ALL TOWN HOMES OR MULTI-FAMILY DWELLING UNITS SHOULD HAVE A MINIMUM OF 1" CONNECTION WITH A 3/4" METER.

**PART 3 - SEWER**

- ALL SEWER MAINS SHALL BE DIP OR P.V.C. UNLESS OTHERWISE NOTED.
- ALL MANHOLES SHALL BE 4' - 0" INSIDE DIAMETER UNLESS OTHERWISE NOTED.
- FORCE MAINS SHALL BE D.I.P. ONLY.
- MANHOLES SHOWN WITH 12" AND 16" WALLS ARE FOR BRICK MANHOLES ONLY.
- MANHOLES DESIGNATED W.T. IN PLAN AND PROFILE SHALL HAVE WATERTIGHT FRAME AND COVERS, STANDARD DETAIL G5.52. WHERE WATERTIGHT MANHOLE FRAME AND COVER IS USED, SET TOP OF FRAME 1'-6" ABOVE FINISHED GRADE UNLESS OTHERWISE NOTED ON THE DRAWINGS.
- HOUSE(S) WITH THE SYMBOL "C.N.S." INDICATES THAT CELLAR CANNOT BE SERVED.

SHEET INDEX	
NO.	DESCRIPTION
1	TITLE SHEET AND PLAN VIEW
2	PROFILES OF WATER AND SEWER MAINS

HOWARD SOIL CONSERVATION DISTRICT:  
 REVIEWED FOR HOWARD SOIL CONSERVATION DISTRICT  
 AND MEETS TECHNICAL REQUIREMENTS

*Jim Mays* 6/14/01  
 NATURAL RESOURCES CONSERVATION SERVICE DATE

THIS PLAN IS APPROVED FOR SOIL EROSION AND SEDIMENT CONTROL BY THE HOWARD SOIL CONSERVATION DISTRICT.

*John R. Carter* 6/14/01  
 HOWARD SOIL CONSERVATION DISTRICT DATE

SEDIMENT CONTROL MEASURES FOR THIS CONTRACT WILL BE IMPLEMENTED IN ACCORDANCE WITH SECTION 219 OF THE HOWARD COUNTY STANDARDS SPECIFICATIONS AND AS PER ROAD CONSTRUCTION PLANS F-01-101

DEPARTMENT OF PUBLIC WORKS  
 HOWARD COUNTY, MARYLAND

*John R. Carter* 6-12-01  
 CHIEF, BUREAU OF UTILITIES DATE

DEPARTMENT OF PLANNING AND ZONING  
 HOWARD COUNTY, MARYLAND

*John R. Carter* 6/19/01  
 CHIEF, DEVELOPMENT ENGINEERING DIVISION DATE

**BENCHMARK**  
 ENGINEERS & LAND SURVEYORS & PLANNERS  
**ENGINEERING, INC.**

8480 BALTIMORE NATIONAL PIKE & SUITE 418  
 ELICOTT CITY, MARYLAND 21043  
 PHONE: 410-465-6105 FAX: 410-465-6644

*Donald Moore*  
 6/14/01

DESIGN: DBT					
DRAWN: DBT					
CHECK: GWF					
DATE: 12/00	BY NO.	REVISIONS	DATE	600 SCALE MAP NO. 50	BLOCK 3
6/01					

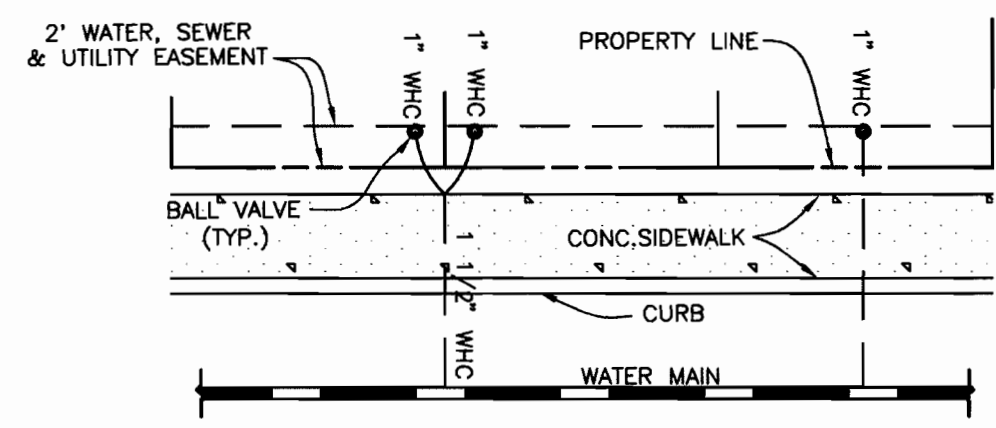
**PLAN OF WATER AND SEWER MAINS**

**NORTH LAUREL PARK**  
 BLOCK 'J' LOTS 17-21 AND  
 BLOCK 'K' LOTS 4-10 and 30-32  
 ELECTION DISTRICT NO. 6

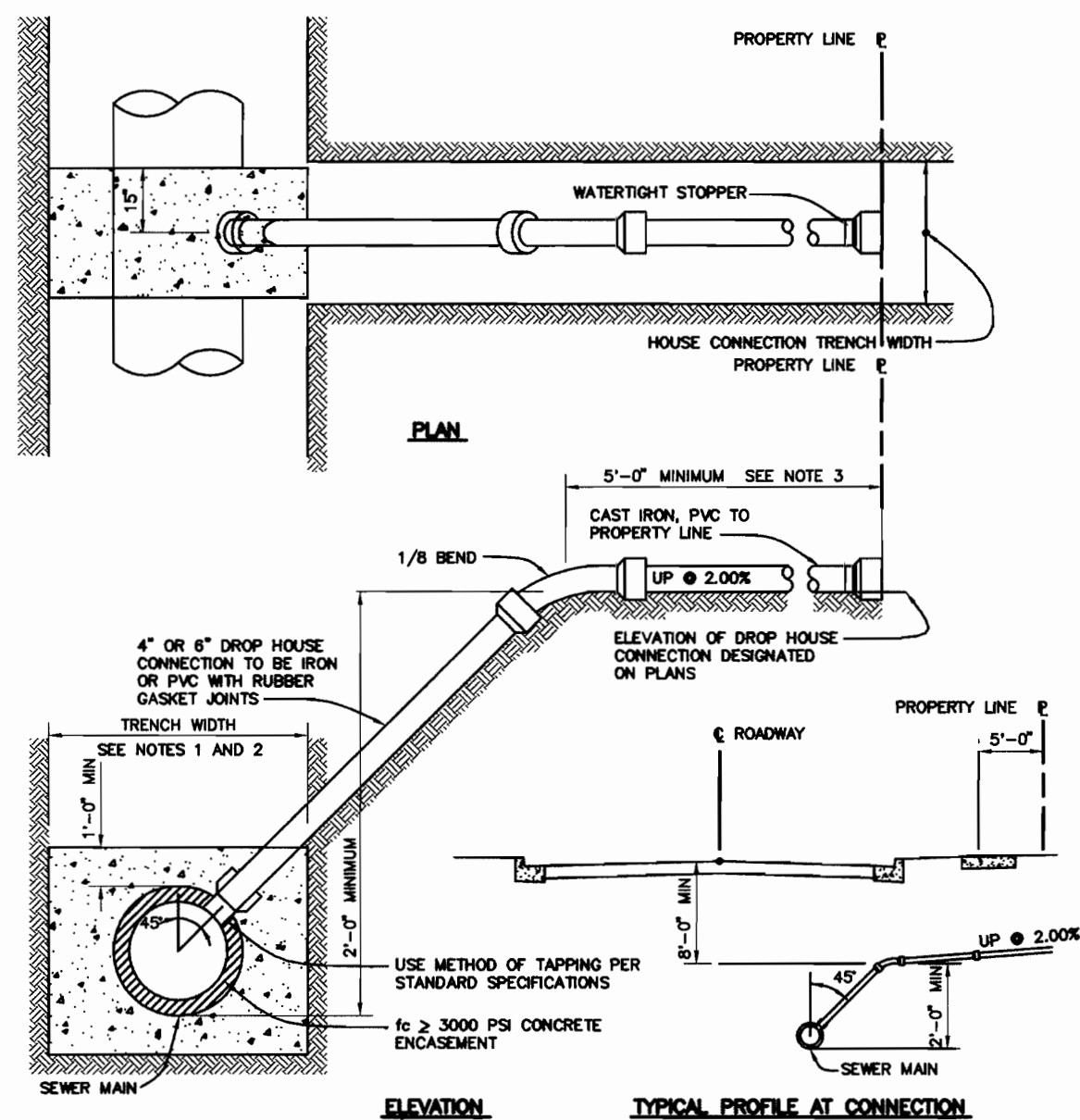
SCALE: AS SHOWN  
 SHEET NO. 1 OF 2

**CONTRACT NO. 24-3963-D**





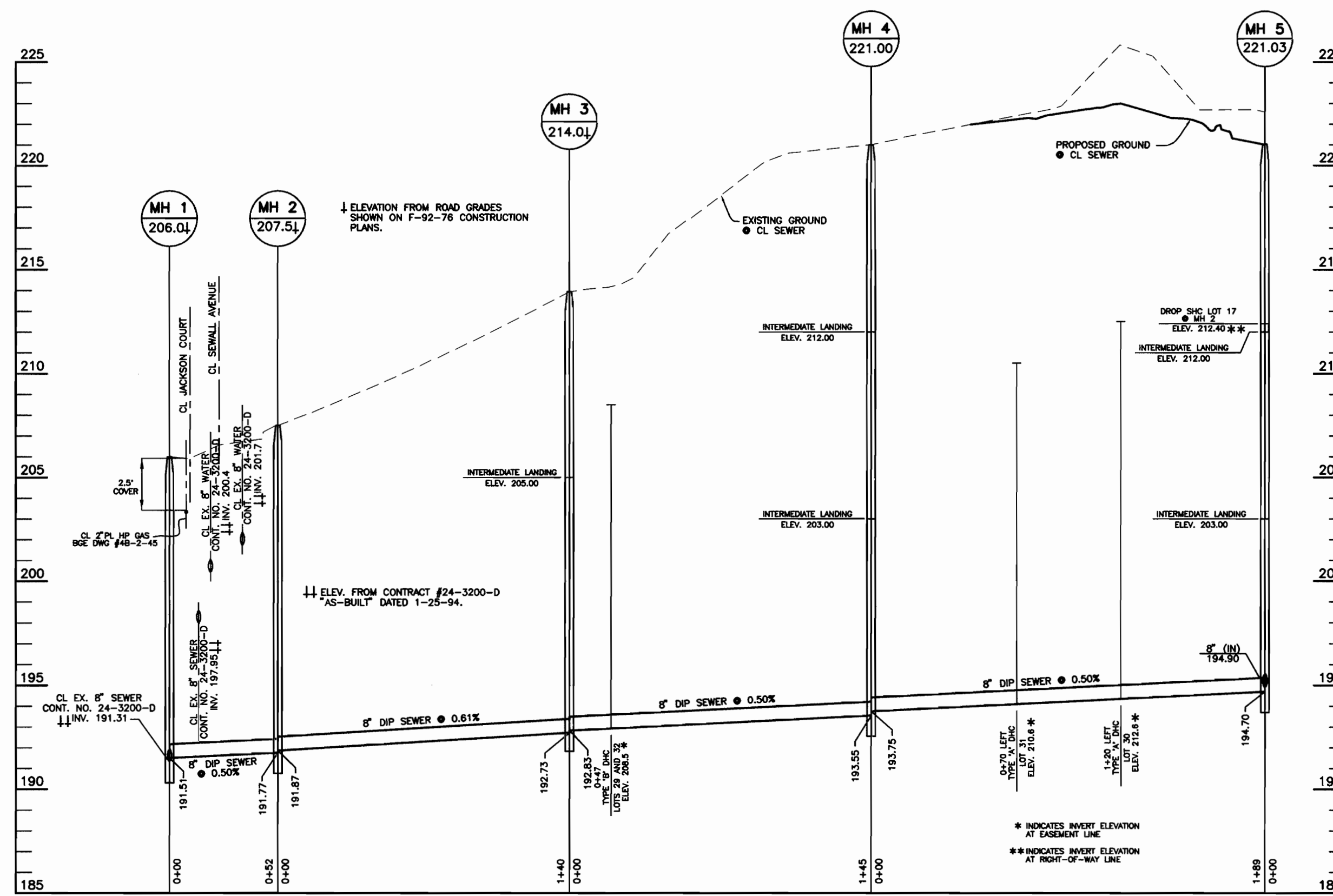
**TYPICAL WATER HOUSE CONNECTIONS**  
NOT TO SCALE



- NOTES:  
 1. S.H.C. TO 6" THRU 12" SEWER MAIN USE SADDLE  
 2. S.H.C. TO PROPOSED SEWER MAINS USE TEES. SEE VOLUME IV, STANDARD DETAIL S212  
 3. S.H.C. AT PROPERTY LINE SHALL TERMINATE WITH MINIMUM PIPE LENGTH OF 5'-0". DETAIL IS NOT APPLICABLE FOR A SHORTER LENGTH THAN 5'-0" AT THE PROPERTY LINE.

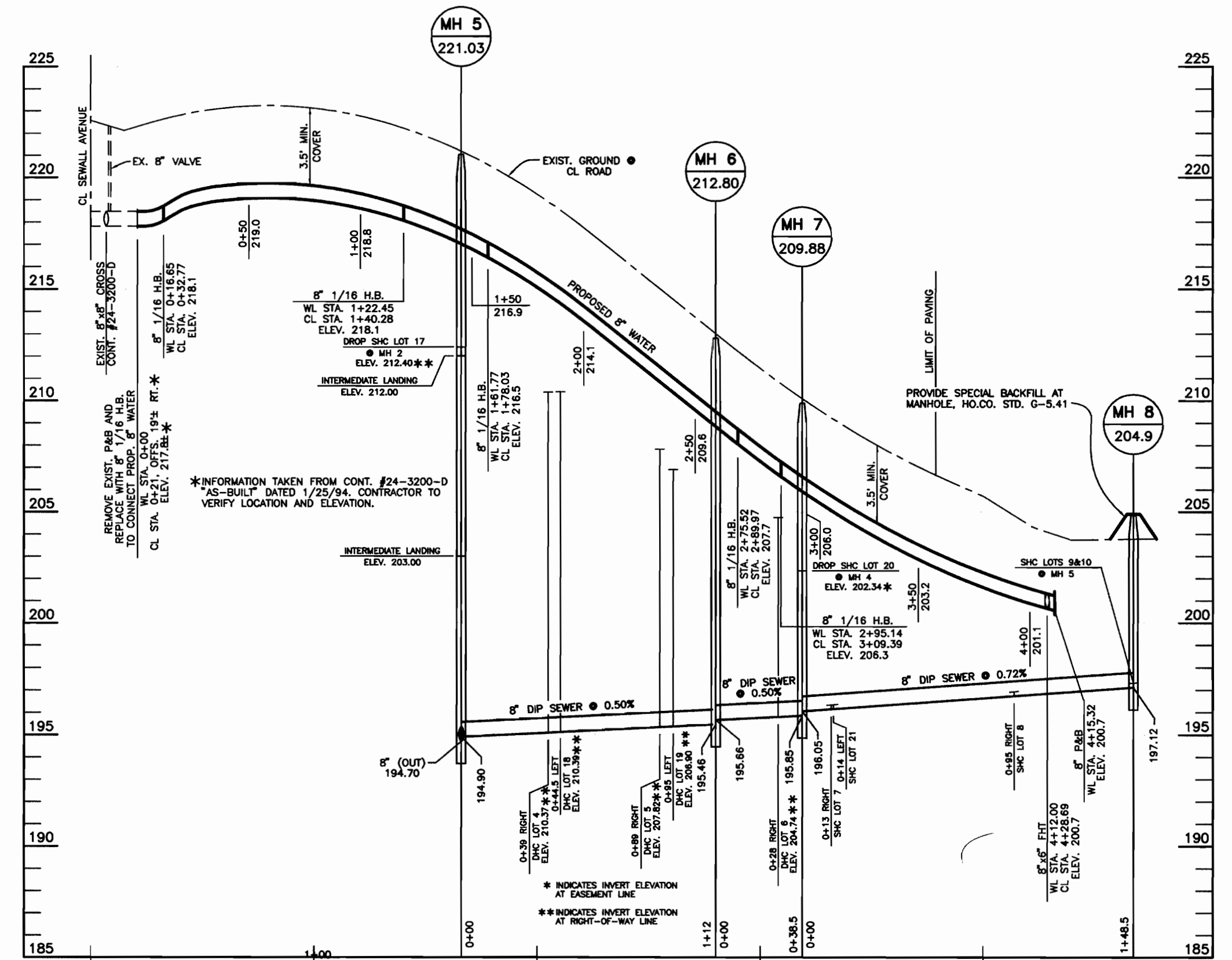
**4" & 6" DROP HOUSE CONNECTION TO SEWER MAIN**

NOT TO SCALE  
 HOWARD COUNTY DESIGN MANUAL - VOL II  
 WATER AND SEWER - APPENDIX 13



**SEWER PROFILE**

SCALE: 1" = 50' HORIZ., 1" = 5' VERT.



**WATER AND SEWER PROFILE**

SCALE: 1" = 50' HORIZ., 1" = 5' VERT.

DEPARTMENT OF PUBLIC WORKS  
 HOWARD COUNTY, MARYLAND

DEPARTMENT OF PLANNING AND ZONING  
 HOWARD COUNTY, MARYLAND

**BENCHMARK**  
 ENGINEERS & LAND SURVEYORS & PLANNERS  
**ENGINEERING, INC.**

8480 BALTIMORE NATIONAL PIKE & SUITE 418  
 ELLICOTT CITY, MARYLAND 21043  
 PHONE: 410-465-6105 FAX: 410-465-6644



DESIGN: DBT					
DRAWN: DBT					
CHECK: GWF					
DATE: 12/00					
6/01	BY	NO.	REVISIONS	DATE	

**PROFILES OF WATER AND SEWER MAINS**

**NORTH LAUREL PARK**  
 BLOCK 'J' LOTS 17-21 AND  
 BLOCK 'K' LOTS 4-10 and 30-32  
 ELECTION DISTRICT NO. 6

**CONTRACT NO. 24-3963-D**

SCALE:  
 AS SHOWN

SHEET NO.  
 2 OF 2



# PUBLIC WATER AND SEWER PLANS

# NORTH LAUREL PARK

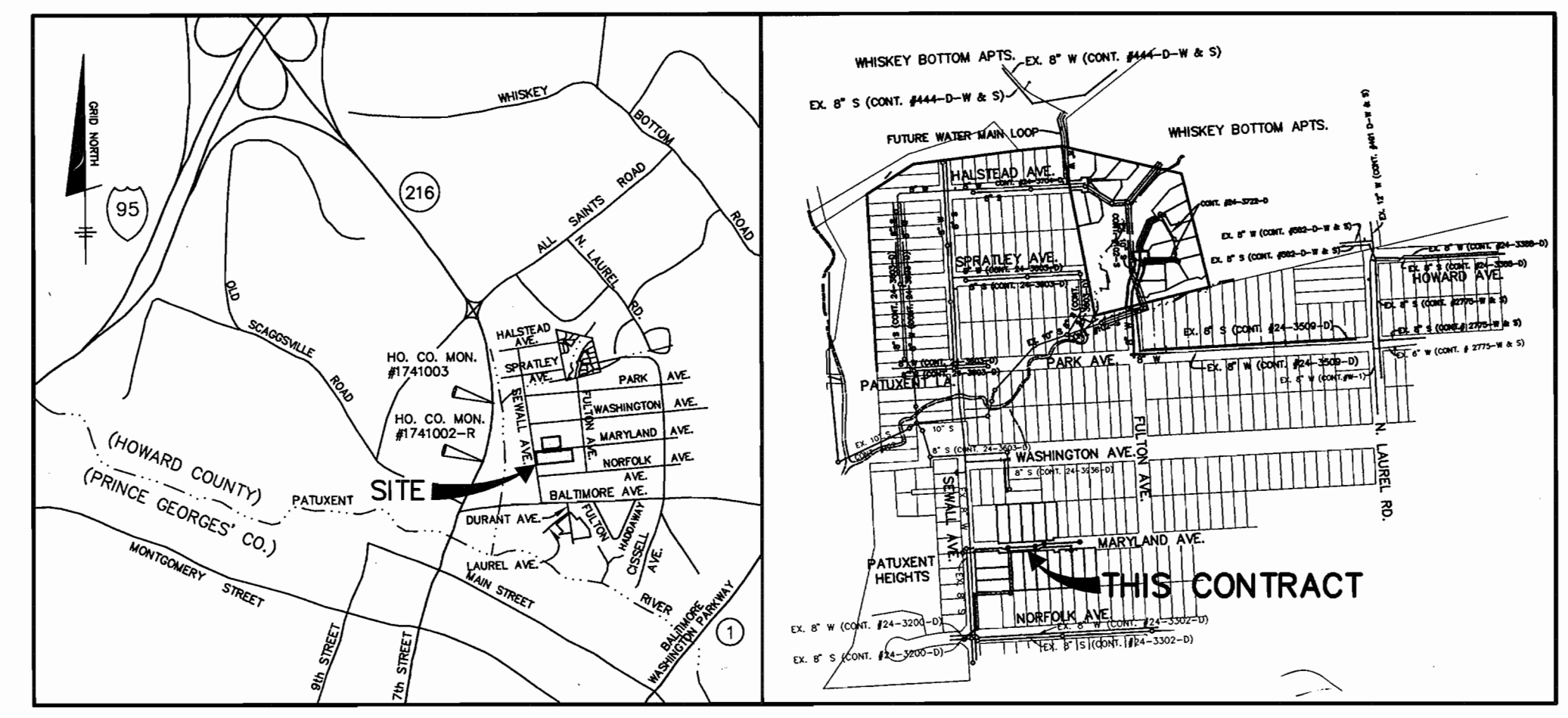
## BLOCK 'J' LOTS 17-21 AND BLOCK 'K' LOTS 4-10 AND 30-32

### 6th ELECTION DISTRICT HOWARD COUNTY, MARYLAND

## CONTRACT No. 24-3963-D

**BENCH MARKS NAD 27**  
 HO. CO. #1741003 NAD 27  
 CONCRETE MONUMENT ON WEST SIDE OF  
 ROUTE 216 AND 0.2' BELOW SURFACE  
 ELEV. 198.395

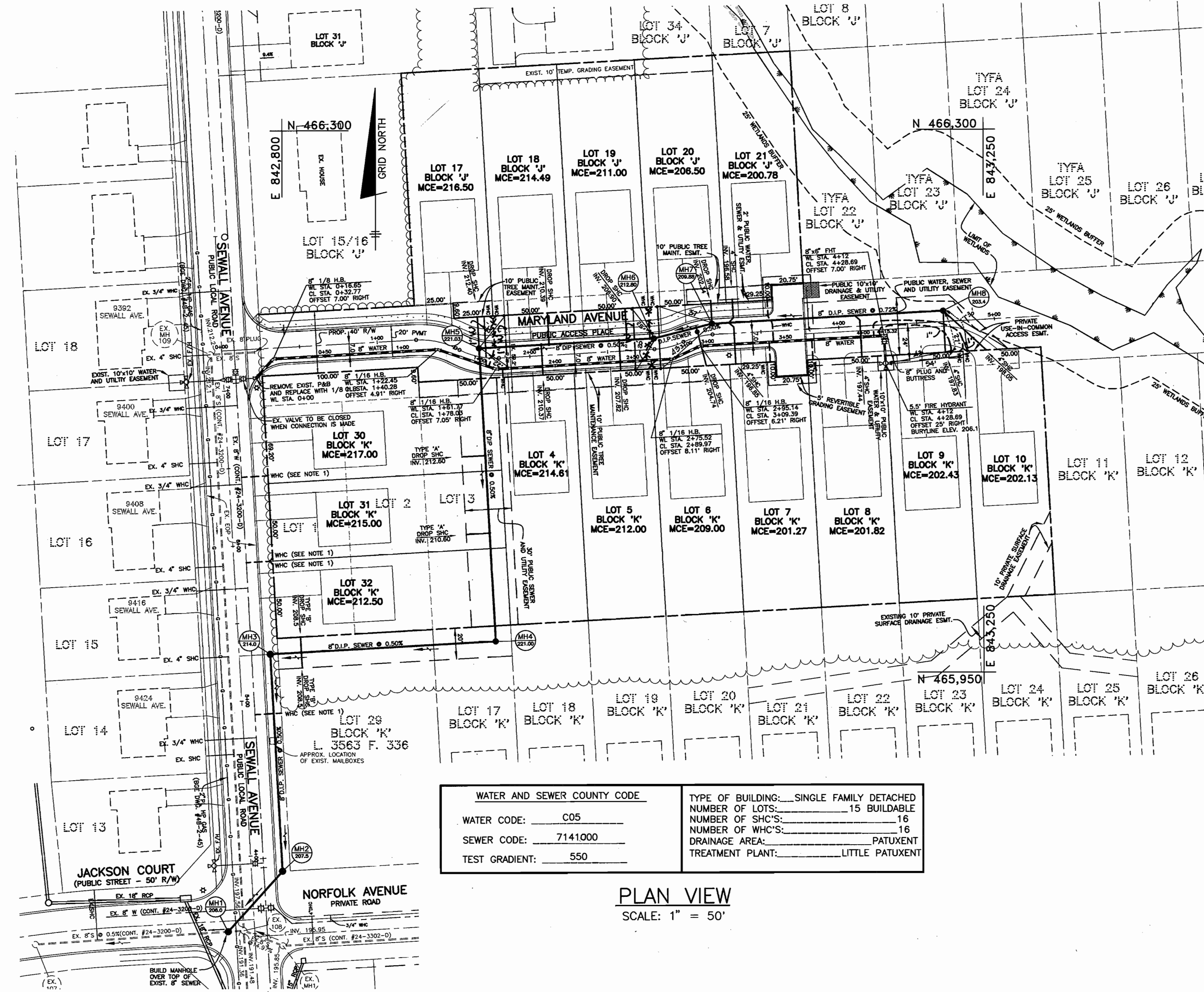
HO. CO. #1741002-R NAD 27  
 CONCRETE MONUMENT ON TOP OF BANK  
 EAST OF EAST EDGE OF MAC. OF ROUTE 216  
 FLUSH WITH SURFACE  
 ELEV. 197.368



SANITARY MANHOLE SCHEDULE		
MANHOLE	LOCATION	DESCRIPTION
1	CL STA. 3+52.98 SEWALL AVENUE, OFFSET 17.0' LEFT	TYPE 'B' DROP MANHOLE, HO.CO. STD. S-1.32
2	CL STA. 3+90.00 SEWALL AVENUE, OFFSET 20.0' RIGHT	STANDARD PRECAST MANHOLE, HO.CO. STD. G-5.11
3	CL STA. 5+30.00 SEWALL AVENUE, OFFSET 20.0' RIGHT	STANDARD PRECAST MANHOLE, HO.CO. STD. G-5.11
4	N 465970.49 E 842936.65	STANDARD PRECAST MANHOLE, HO.CO. STD. G-5.11
5	CL STA. 1+66.09 MARYLAND AVENUE, OFFSET 5.24' LEFT	STANDARD PRECAST MANHOLE, HO.CO. STD. G-5.11
6	CL STA. 2+80.16 MARYLAND AVENUE, OFFSET 7.0' LEFT	STANDARD PRECAST MANHOLE, HO.CO. STD. G-5.11
7	CL STA. 3+18.88 MARYLAND AVENUE, OFFSET 7.0' LEFT	STANDARD PRECAST MANHOLE, HO.CO. STD. G-5.11
8	CL STA. 4+67.38 MARYLAND AVENUE, OFFSET 7.0' LEFT	STANDARD PRECAST MANHOLE, HO.CO. STD. G-5.11

QUANTITIES					
ITEMS	QUANTITIES ESTIMATED	AS-BUILT			
		QUANTITIES	TYPE	MANUF./SUPPLIER	
8" WATER	415 LF	415 LF	GRIFFIN DIP	GRIFFIN/HUGHES	
6" VALVES	1 EA.	1 EA.	GATE	KENJUDY/HUGHES	
FIRE HYDRANTS	1 EA.	1 EA.	KENJUDY	K	
1" WHC	110 LF	210 L.F.	COPPER	HONELL/HUGHES	
1-1/2" WHC	160 LF				
8" SEWER D.I.P.	825 LF	825 L.F.	GRIFFIN DIP	GRIFFIN/HUGHES	
MANHOLES	8	8	PRECAST	ATLANTIC	
4" SHC	131 LF	131 L.F.	GRIFFIN D.I.P.	GRIFFIN/HUGHES	
4" DHC	178 LF	178 L.F.			

NAME OF UTILITY CONTRACTOR: *CAINES*  
 SURVEY AND DRAFTING DIVISION AS-BUILT DATE: 11-13-01



WATER AND SEWER COUNTY CODE	TYPE OF BUILDING: SINGLE FAMILY DETACHED
WATER CODE: C05	NUMBER OF LOTS: 15 BUILDABLE
SEWER CODE: 7141.000	NUMBER OF SHC'S: 16
TEST GRADIENT: 550	DRAINAGE AREA: PATUXENT
	TREATMENT PLANT: LITTLE PATUXENT

**PLAN VIEW**  
 SCALE: 1" = 50'

- ### GENERAL NOTES
- PART 1 - GENERAL**
- APPROXIMATE LOCATION OF EXISTING MAINS ARE SHOWN. THE CONTRACTOR SHALL TAKE ALL NECESSARY PRECAUTIONS TO PROTECT EXISTING MAINS AND SERVICES AND MAINTAIN UNINTERRUPTED SUPPLY. ANY DAMAGE INCURRED SHALL BE REPAIRED IMMEDIATELY TO THE SATISFACTION OF THE ENGINEER AT THE CONTRACTOR'S EXPENSE.
  - ALL HORIZONTAL CONTROLS ARE BASED ON MARYLAND STATE COORDINATES (NORTH AMERICAN DATUM OF 1983 (NAD'83)).
  - ALL VERTICAL CONTROLS ARE BASED ON U.S.C.S. DATA.
  - ALL PIPE ELEVATIONS SHOWN ARE INVERT ELEVATIONS.
  - CLEAR ALL UTILITIES BY A MINIMUM OF 6" CLEAR ALL POLES BY 2'-0" MINIMUM OR TUNNEL AS REQUIRED. THE OWNER HAS CONTACTED THE UTILITY COMPANIES AND HAS MADE ARRANGEMENTS FOR BRACING OF POLES AS SHOWN ON THE DRAWINGS. IN THE EVENT THE CONTRACTOR'S WORK REQUIRES THE BRACING OF ADDITIONAL POLES OR DAMAGES SHALL BE DEDUCTED FROM MONEY OWED TO THE CONTRACTOR. THE CONTRACTOR SHALL COORDINATE WITH THE UTILITY COMPANIES TO SCHEDULE THE BRACING OF THE POLES.
  - FOR DETAILS NOT SHOWN ON THE DRAWINGS, AND FOR MATERIALS AND CONSTRUCTION METHODS USE HOWARD COUNTY DESIGN MANUAL VOLUME IV, STANDARD SPECIFICATIONS AND DETAIL FOR CONSTRUCTION (LATEST EDITION). THE CONTRACTOR SHALL HAVE A COPY OF VOLUME IV ON THE JOB.
  - WHERE TEST PITS HAVE BEEN MADE ON EXISTING UTILITIES, THEY ARE NOTED BY THE SYMBOL [ ] AT THE LOCATION OF THE TEST PIT. A NOTE OR NOTES CONTAINING THE RESULTS OF THE TEST PIT OR PITS IS INCLUDED ON THE DRAWINGS. EXISTING UTILITIES IN THE VICINITY OF THE PROPOSED WORK FOR WHICH TEST PITS HAVE NOT BEEN DUG SHALL BE LOCATED BY THE CONTRACTOR TWO WEEKS IN ADVANCE OF CONSTRUCTION OPERATIONS AT HIS OWN EXPENSE.
  - CONTRACTOR SHALL NOTIFY THE FOLLOWING UTILITY COMPANIES OR AGENCIES AT LEAST FIVE (5) WORKING DAYS BEFORE STARTING WORK SHOWN ON THESE PLANS:
    - STATE HIGHWAY ADMINISTRATION.....410-531-5533
    - BGE CONTRACTOR SERVICES.....410-850-4620
    - BGE UNDERGROUND DAMAGE CONTROL.....410-291-4607
    - MISS UTILITY.....1-800-257-7777
    - COLONIAL PIPELINE CO.....410-549-4120
    - HOWARD CO. DEPT. OF PUBLIC WORKS
    - BUREAU OF UTILITIES.....410-313-4900
    - BELL ATLANTIC.....1-800-446-5266
  - TREES AND SHRUBS ARE TO BE PROTECTED FROM DAMAGE TO MAXIMUM EXTENT. TREES AND SHRUBS LOCATED WITHIN THE CONSTRUCTION STRIP ARE NOT TO BE REMOVED OR DAMAGED BY THE CONTRACTOR.
  - CONTRACTOR SHALL REMOVE TREES, STUMPS AND ROOTS ALONG LINE OF EXCAVATION. PAYMENT FOR SUCH REMOVAL SHALL BE INCLUDED IN THE UNIT PRICE BID FOR CONSTRUCTION OF THE MAIN.
  - PLACE REGULATION "MEN WORKING" AND WARNING SIGNS AS REQUIRED TO COMPLY WITH MARYLAND STATE HIGHWAY ADMINISTRATION MANUAL OF TRAFFIC CONTROL FOR HIGHWAY MAINTENANCE OPERATIONS.
  - THE CONTRACTOR SHALL NOTIFY THE BUREAU OF HIGHWAYS, HOWARD COUNTY, AT (410) 313-2450 AT LEAST FIVE (5) WORKING DAYS BEFORE ANY OPEN CUT OF ANY COUNTY ROAD OR BORING/JACKING OPERATION IN COUNTY ROADS FOR LAYING WATER/SEWER MAINS OR HOUSE CONNECTIONS. THE APPROVAL OF THESE DRAWINGS WILL CONSTITUTE COMPLIANCE WITH DPW REQUIREMENTS PER SECTION 18.114(c) OF THE HOWARD COUNTY CODE.

- PART 2 - WATER**
- ALL WATER MAINS TO BE D.I.P. CLASS 52 UNLESS OTHERWISE NOTED.
  - TOPS OF ALL WATER MAINS TO HAVE A MINIMUM OF 3.5' COVER UNLESS OTHERWISE NOTED.
  - VALVES ADJACENT TO TEES SHALL BE STRAPPED TO TEES.
  - ALL FITTINGS SHALL BE BUTTRESSED OR ANCHORED WITH CONCRETE IN ACCORDANCE WITH THE STANDARD DETAILS UNLESS OTHERWISE PROVIDED FOR ON THE DRAWINGS.
  - FIRE HYDRANTS SHALL BE SET TO THE BURY LINE ELEVATIONS SHOWN ON THE DRAWINGS. ALL FIRE HYDRANTS SHALL BE RESTRAINED WITH CONCRETE IN ACCORDANCE WITH STANDARD DETAILS. SOIL AROUND THE FIRE HYDRANT SHALL BE COMPACTED IN ACCORDANCE WITH SECTION 1000 AND 1005 OF THE STANDARD SPECIFICATIONS.
  - THE CONTRACTOR SHALL NOT OPERATE ANY WATER MAIN VALVES ON THE EXISTING WATER SYSTEM.
  - ALL WATER HOUSE CONNECTIONS SHALL BE FOR INSIDE METER SETTING UNLESS OTHERWISE NOTED ON PLANS OR IN SPECIFICATIONS. ALL WATER HOUSE CONNECTIONS SHALL BE 1" INCH.
  - FOR SPRINKLER SYSTEM FOR ALL TOWN HOMES OR MULTI-FAMILY DWELLING UNITS SHOULD HAVE A MINIMUM OF 1" CONNECTION WITH A 3/4" METER.
- PART 3 - SEWER**
- ALL SEWER MAINS SHALL BE DIP OR P.V.C. UNLESS OTHERWISE NOTED.
  - ALL MANHOLES SHALL BE 4' - 0" INSIDE DIAMETER UNLESS OTHERWISE NOTED.
  - FORCE MAINS SHALL BE D.I.P. ONLY.
  - MANHOLES SHOWN WITH 12" AND 16" WALLS ARE FOR BRICK MANHOLES ONLY.
  - MANHOLES DESIGNATED W.T. IN PLAN AND PROFILE SHALL HAVE WATERTIGHT FRAME AND COVERS, STANDARD DETAIL 05.52, WHERE WATERTIGHT MANHOLE FRAME AND COVER IS USED, SET TOP OF FRAME 1'-6" ABOVE FINISHED GRADE UNLESS OTHERWISE NOTED ON THE DRAWINGS.
  - HOUSE(S) WITH THE SYMBOL "C.N.S." INDICATES THAT CELLAR CANNOT BE SERVED.

SHEET INDEX	
NO.	DESCRIPTION
1	TITLE SHEET AND PLAN VIEW
2	PROFILES OF WATER AND SEWER MAINS

HOWARD SOIL CONSERVATION DISTRICT:  
 REVIEWED FOR HOWARD SOIL CONSERVATION DISTRICT  
 AND MEETS TECHNICAL REQUIREMENTS

*Jim Mayes* 6/14/01  
 NATURAL RESOURCES CONSERVATION SERVICE DATE

THIS PLAN IS APPROVED FOR SOIL EROSION AND SEDIMENT CONTROL BY THE HOWARD SOIL CONSERVATION DISTRICT.

*John Blanton* 6/14/01  
 HOWARD SOIL CONSERVATION DISTRICT DATE

SEDIMENT CONTROL MEASURES FOR THIS CONTRACT WILL BE IMPLEMENTED IN ACCORDANCE WITH SECTION 219 OF THE HOWARD COUNTY STANDARD SPECIFICATIONS AND AS PER ROAD CONSTRUCTION PLANS F-01-101

**NOTES:**

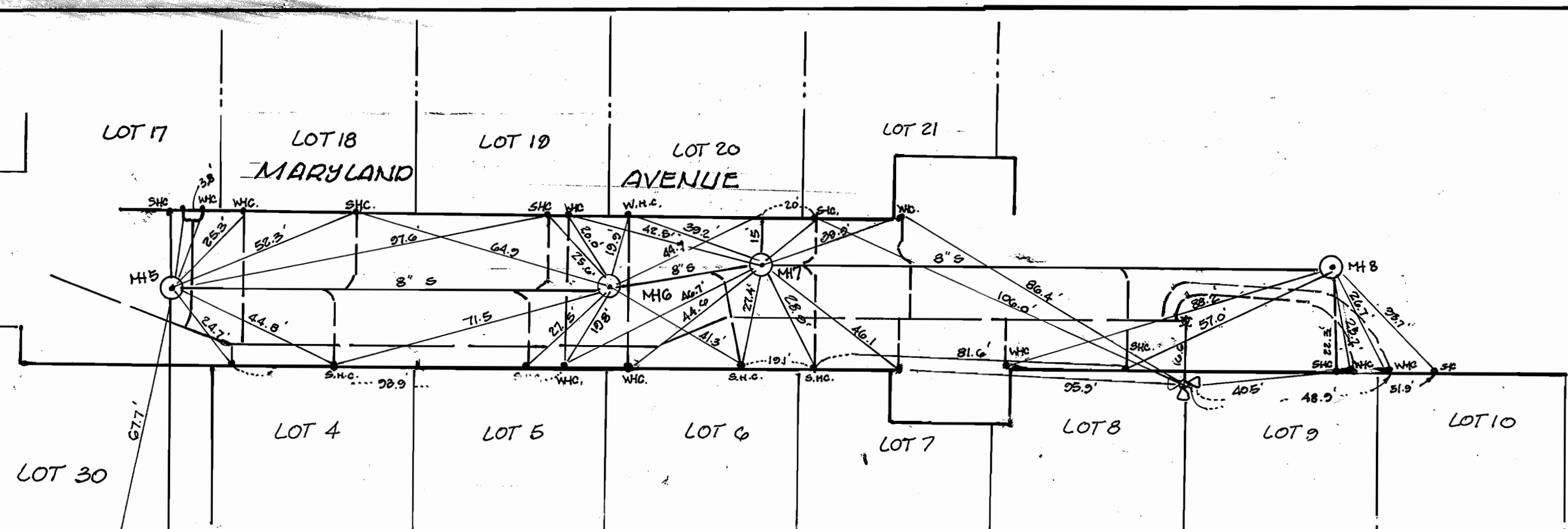
- WATER HOUSE CONNECTIONS FOR BLOCK 'K' LOTS 29-32 ARE PROPOSED UNDER THIS CONTRACT. THE CONNECTIONS ARE TO BE MADE TO THE 8" WATER MAIN CONSTRUCTED UNDER CONTRACT NUMBER 24-3200-D.

**NOTE:**

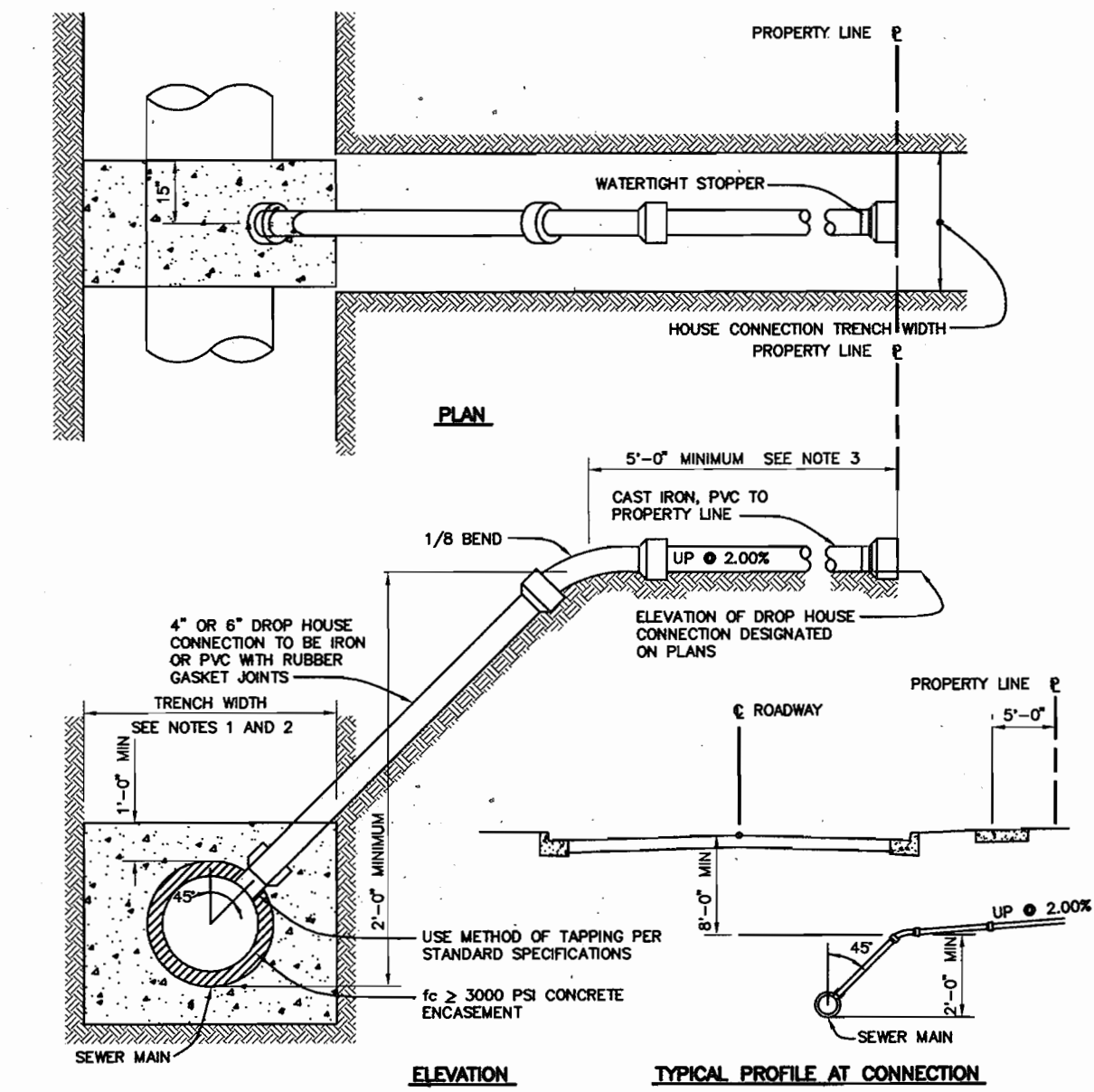
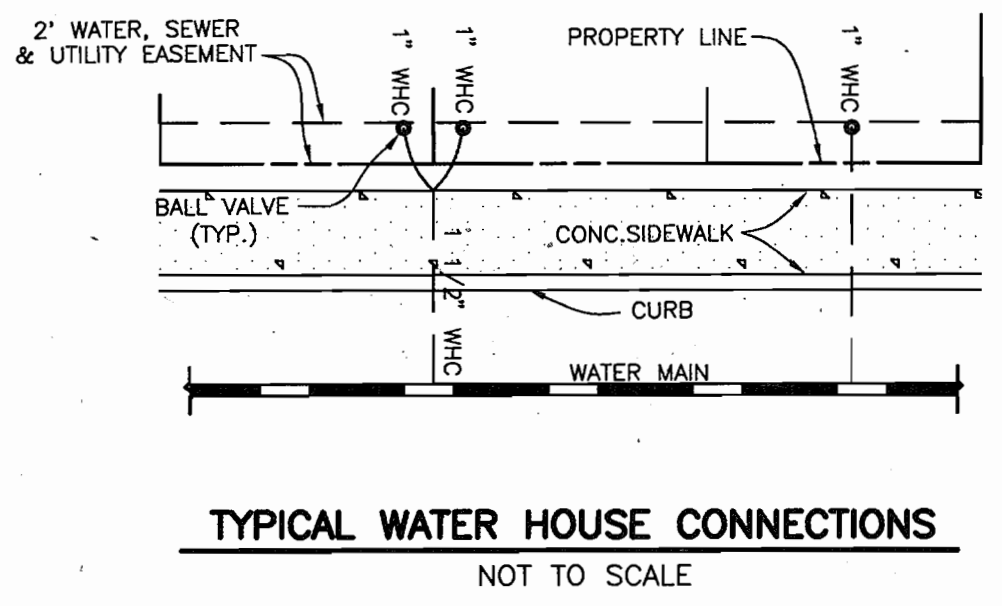
CONTRACTOR SHALL MAINTAIN A MINIMUM OF ONE (1) LANE OF TRAFFIC OPEN AT ALL TIMES ALONG SEWALL AVENUE. IF THE WORK WITHIN SEWALL AVENUE TAKES MORE THAN ONE (1) DAY, THE CONTRACTOR SHALL INSTALL STEEL PLATES AT THE END OF EACH WORK DAY.

DEPARTMENT OF PUBLIC WORKS HOWARD COUNTY, MARYLAND  <i>Robert Beaman</i> 6-12-01 CHIEF, BUREAU OF UTILITIES DATE	DEPARTMENT OF PLANNING AND ZONING HOWARD COUNTY, MARYLAND  <i>John Blanton</i> 6/19/01 CHIEF, DEVELOPMENT ENGINEERING DIVISION DATE	<b>BENCHMARK</b> ENGINEERS • LAND SURVEYORS • PLANNERS <b>ENGINEERING, INC.</b> 840 BALTIMORE NATIONAL PIKE A SUITE 418 ELICOTT CITY, MARYLAND 21043 PHONE: 410-465-6105 FAX: 410-465-6844  <i>Donald Mason</i> 6/14/01	DESIGN: DBT DRAWN: DBT CHECK: GWF DATE: 12/00 6/01	BY: NO. REVISIONS KCI 2 ASBUILT DATA ADDED 10/06/02 KCI 1 ASBUILT DATA ADDED 01/31/02	<b>PLAN OF WATER AND SEWER MAINS</b>  600 SCALE MAP NO. 50 BLOCK 3	<b>NORTH LAUREL PARK</b> BLOCK 'J' LOTS 17-21 AND BLOCK 'K' LOTS 4-10 AND 30-32 ELECTION DISTRICT NO. 6 <b>CONTRACT NO. 24-3963-D</b>	SCALE: AS SHOWN  SHEET NO. 1 OF 2
--	---	--	--	---	--	---	---



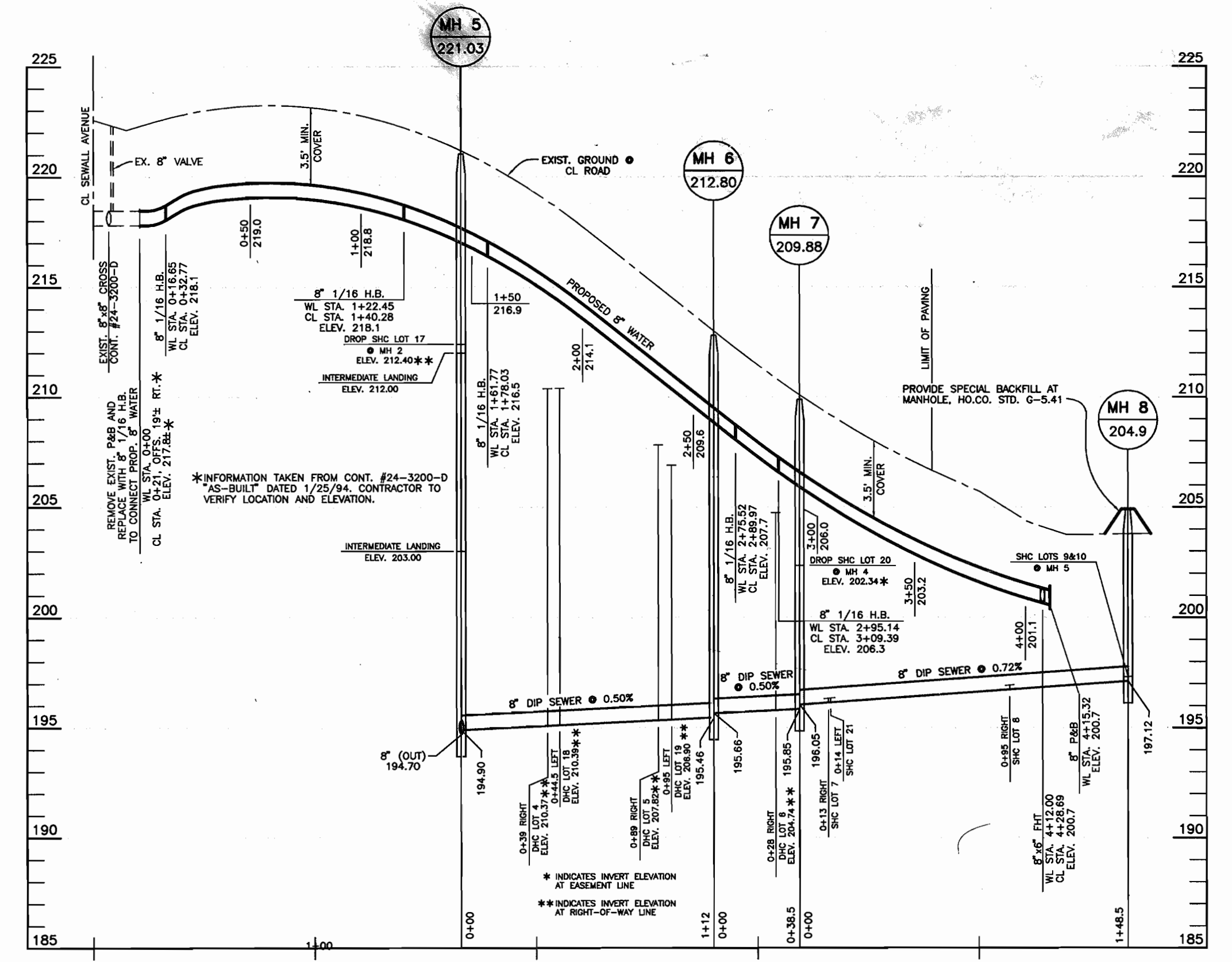
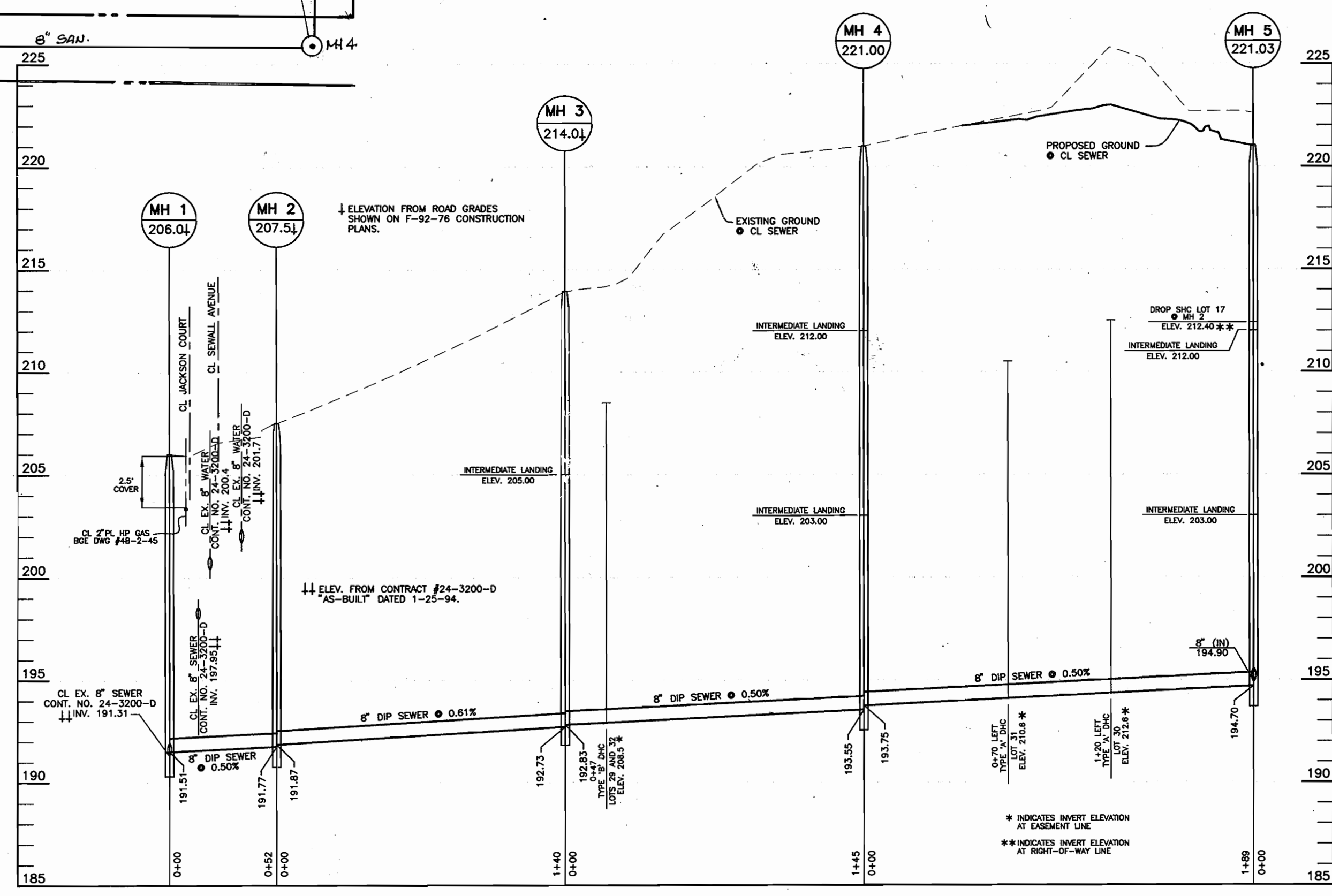


"AS-BUILT" WATER AND SEWER FIELD MEASUREMENTS  
SCALE: 1" = 20'



NOTES:  
1. S.H.C. TO 6" THRU 12" SEWER MAIN USE SADDLE.  
2. S.H.C. TO PROPOSED SEWER MAINS, USE TEES, SEE VOLUME IV, STANDARD DETAIL S2.12.  
3. S.H.C. AT PROPERTY LINE SHALL TERMINATE WITH MINIMUM PIPE LENGTH OF 5'-0" DETAIL IS NOT APPLICABLE FOR A SHORTER LENGTH THAN 5'-0" AT THE PROPERTY LINE.

HOWARD COUNTY DESIGN MANUAL - VOL II  
WATER AND SEWER - APPENDIX 13



DEPARTMENT OF PUBLIC WORKS  
HOWARD COUNTY, MARYLAND

DEPARTMENT OF PLANNING AND ZONING  
HOWARD COUNTY, MARYLAND

**BENCHMARK**  
ENGINEERS & LAND SURVEYORS & PLANNERS  
**ENGINEERING, INC.**  
8480 BALTIMORE NATIONAL PIKE & SUITE 418  
ELLCOTT CITY, MARYLAND 21143  
PHONE: 410-465-8105 FAX: 410-465-8844

*Dorothy Mason*  
6/14/01

DESIGN:	DBT				
DRAWN:	DBT				
CHECK:	GWF				
DATE:	12/00	KCI	1	AS-BUILT DATA (WATER & SEWER)	10/01
	6/01	BY	NO.	REVISIONS	DATE

**PROFILES OF WATER AND SEWER MAINS**  
600 SCALE MAP NO. 50  
BLOCK 3

**NORTH LAUREL PARK**  
BLOCK 'J' LOTS 17-21 AND  
BLOCK 'K' LOTS 4-10 and 30-32  
ELECTION DISTRICT NO. 6  
**CONTRACT NO. 24-3963-D**

SCALE:  
AS SHOWN  
SHEET NO.  
2 OF 2