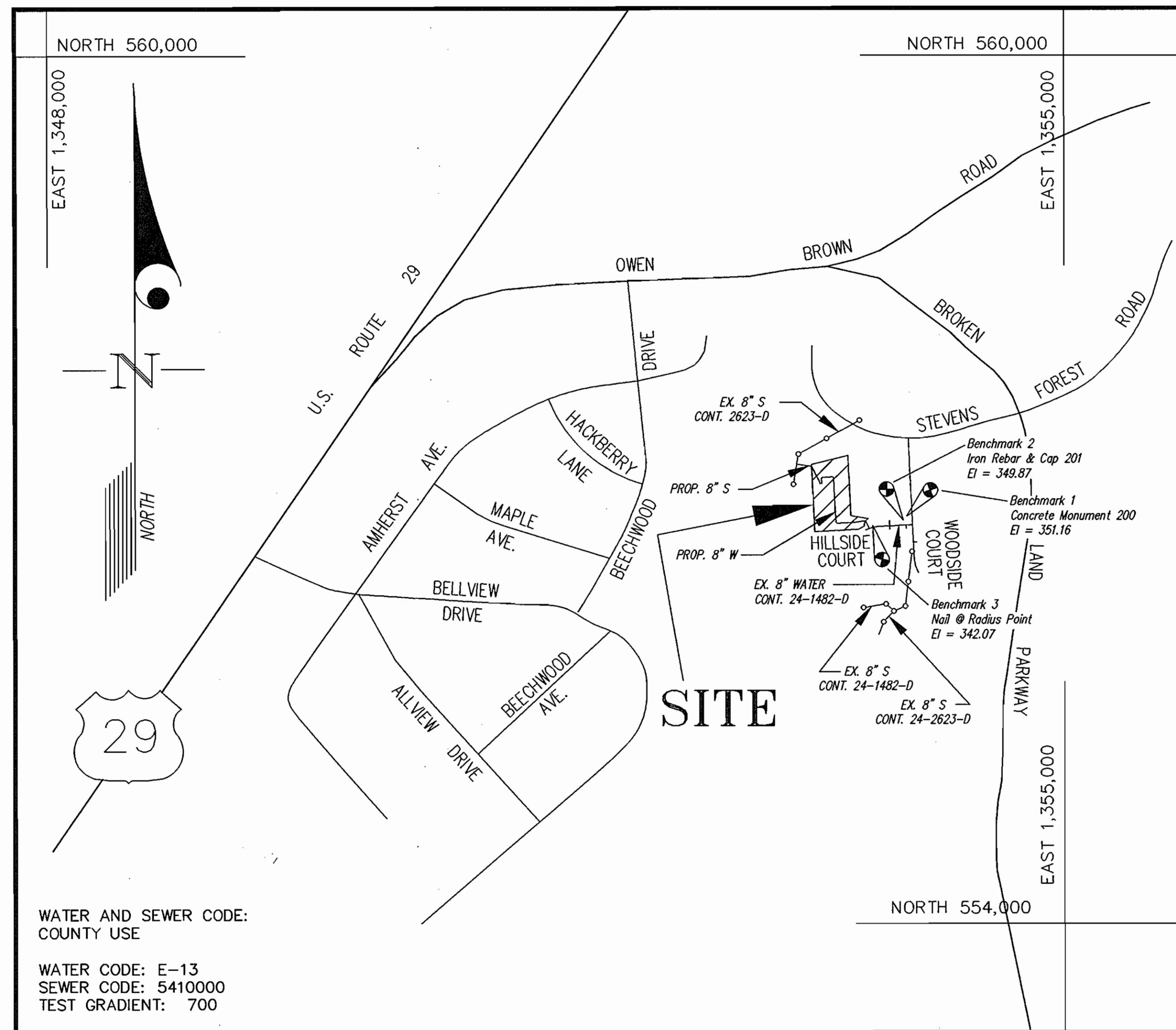


QUANTITIES				
ITEMS	QUANTITIES ESTIMATED	AS-BUILT		
		QUANTITIES	TYPE	MANUFACTURER/SUPPLIER
8" 1/8 HB	3	4		TYLER PIPE/LB WATERSER
6" V	1	1		TYLER PIPE/LB WATERSER
8"x6" FHT	1	1		
FIRE HYDRANT (5.5')	1	1		MUELLER CO./FERGUSON ENT
8" CAP	1	1		MUELLER CO./FERGUSON ENT
8" D.I.P. (WATER)	336 L.F.	336 L.F.	DIP CL.52	AMERICAN CAST IRON PIPE CO.
6" D.I.P. (WATER)	17 L.F.	17 L.F.	DIP CL.52	GRIFFIN PIPE/LB WATERSER
8" V		1		GRIFFIN PIPE/LB WATERSER
8" D.I.P. (SEWER)	106 L.F.	110 L.F.	DIP CL.52	TYLER PIPE
8" STOPPER	1	1		
4' MANHOLE	6.0 V.F.	6.0 V.F.	CONC.	FREDERICK PRECAST
4' TYPE A, MANHOLE	8.5 V.F.	8.5 V.F.	CONC.	FREDERICK PRECAST
NAME OF UTILITY CONTRACTOR: RICHARD STINE, INC.				
SURVEY AND DRAFTING DIV.		CHECKBOX: AS-BUILT DATE:		11-05



TYPE OF BUILDING	OFFICE
NUMBER OF UNITS	1
NUMBER OF S.H.C.'s	1
NUMBER OF W.H.C.'s	1
DRAINAGE AREA	LITTLE PATUXENT
TREATMENT PLANT	LITTLE PATUXENT

- GENERAL NOTES**
- PART I**
- Approximate location of existing mains are shown. The contractor shall take all necessary precautions to protect existing mains and services and maintain uninterrupted supply. Any damage incurred shall be repaired immediately to the satisfaction of the Engineer at the Contractor's expense.
 - All horizontal controls are based on Maryland State Coordinates [North American Datum 1983 (NAD '83)].
 - All vertical controls are based on U.S.G.S. data.
 - All pipe elevations shown are invert elevations.
 - Clear all utilities by a minimum of 6". Clear all poles by 2'-0" minimum or tunnel as required. The owner has contacted the utility companies and has made arrangements for bracing of poles as shown on the drawings. In the event the contractor's work requires the bracing of additional poles or damages shall be deducted from money owed the contractor. The contractor shall coordinate with the utility companies to schedule the bracing of the poles.
 - For details not shown on the drawings, and for materials and construction methods use Howard County Design Manual, Volume IV, Standard Specifications and Detail for Construction (Latest Edition). The contractor shall have a copy of Volume IV on the job.
 - Where test pits have been made on existing utilities, they are noted by the symbol at the location of the test pit. A note or notes containing the results of the test pit or pits is included on the drawings. Existing utilities in the vicinity of the proposed work for which test pits have not been dug shall be located by the contractor two weeks in advance of construction operations at his own expense.
 - Contractor shall notify the following utility companies or agencies at least (5) working days before starting work shown on these plans:
 - State Highway Administration 531-5533
 - BGE Contractor Services 850-4620
 - BGE Under Ground Damage Control 787-9068
 - Miss Utility 1-800-257-7777
 - Colonial Pipeline Co. 795-1390
 - Howard County Department of Public Works Bureau of Utilities 313-4900
 - Trees and shrubs are to be protected from damage to maximum extent. Trees and shrubs located within the construction strip are not to be removed or damaged by the contractor.
 - Contractor shall remove trees, stumps and roots along line of excavation. Payment for such removal shall be included in the unit price bid for construction of the main.
 - The contractor shall notify the Bureau of Highways, Howard County, at (410) 313-2450 at least five (5) working days before any open cut of any County road or boring/jacking operation on County roads for laying water/sewer mains or house connections. The approval of these drawings will constitute compliance with DPW requirement per Section 18.114(a) of the Howard County Code.
- PART II - WATER**
- All water mains to be D.I.P. Class 52 unless otherwise noted.
 - Tops of all water mains to have a minimum of 3'-1/2' cover unless otherwise noted.
 - Valves adjacent to tees shall be strapped to tees.
 - All fittings shall be buttressed or anchored with concrete in accordance with the Standard Details unless otherwise provided for on the drawings.
 - Fire hydrants shall be set to the bury line elevations shown on the drawings. All fire hydrants shall be restrained and buttressed with concrete in accordance with the Standard Details. Soil around the fire hydrant shall be compacted in accordance with Section 1000 and 1005 of the Standard Specifications.
 - The contractor shall not operate any water main valves on the existing water system.
 - All water house connections shall be for inside meter setting unless otherwise noted on plans or in specifications.
 - For sprinkler system for all townhomes or multi-family dwelling units shall have a minimum of 1' connection with a 3/4" meter.
- PART III - SEWER**
- All sewer mains shall be D.I.P. and P.V.C. unless otherwise noted.
 - All manholes shall be 4'-0" inside diameter unless otherwise noted.
 - Force mains shall be D.I.P. only.
 - Manholes shown with 12" and 16" walls are for brick manholes only.
 - Manholes designated W.T. in plan and profile shall have watertight frame and covers, Standard Detail G5.52. Where watertight frame and cover is used, set top of frame 1'-6" above finished grade unless otherwise noted on drawings.
 - House(s) with the symbol "C.N.S." indicates that cellar cannot be served.

VICINITY MAP
SCALE: 1"=600'

CONTRACT No. 24-3944-D

HOWARD COUNTY, MARYLAND
DEPARTMENT OF PUBLIC WORKS

AS BUILT
DATE: NOVEMBER 2005

Sediment Control Measures will be implemented in accordance with SDP 01-81.

REVIEWED FOR HOWARD SOIL CONSERVATION DISTRICT AND MEETS TECHNICAL REQUIREMENT.

Jim Myer 3/13/01
SIGNATURE DATE

U.S.D.A. NATURAL RESOURCES CONSERVATION SERVICE

THIS DEVELOPMENT PLAN IS APPROVED FOR SOIL EROSION AND SEDIMENT CONTROL BY THE HOWARD SOIL CONSERVATION DISTRICT.

APPROVED: *John R. Robertson* 3/13/01
HOWARD S.C.D. Date

DEPARTMENT OF PUBLIC WORKS
HOWARD COUNTY, MARYLAND

John R. Robertson 3-9-01
CHIEF, BUREAU OF UTILITIES DATE

DEPARTMENT OF PLANNING AND ZONING
HOWARD COUNTY, MARYLAND

John R. Robertson 3/14/01
CHIEF, DEVELOPMENT ENGINEERING DIVISION DATE

GLW GUTSCHICK LITTLE & WEBER, P.A.
CIVIL ENGINEERS, LAND SURVEYORS, LAND PLANNERS, LANDSCAPE ARCHITECTS
3909 NATIONAL DRIVE - SUITE 250 - BURTONSVILLE OFFICE PARK
BURTONSVILLE, MARYLAND 20866
TEL: 301-421-4024 BALT: 410-680-1820 DC/VA: 301-989-2524 FAX: 301-421-4186



DES: SCC					
DRN: BB					
CHK: SCC					
DATE: 8/00	BY: NO	REVISION	DATE	600' SCALE MAP NO. 36	BLOCK NO. 14

WATER & SEWER COVER SHEET

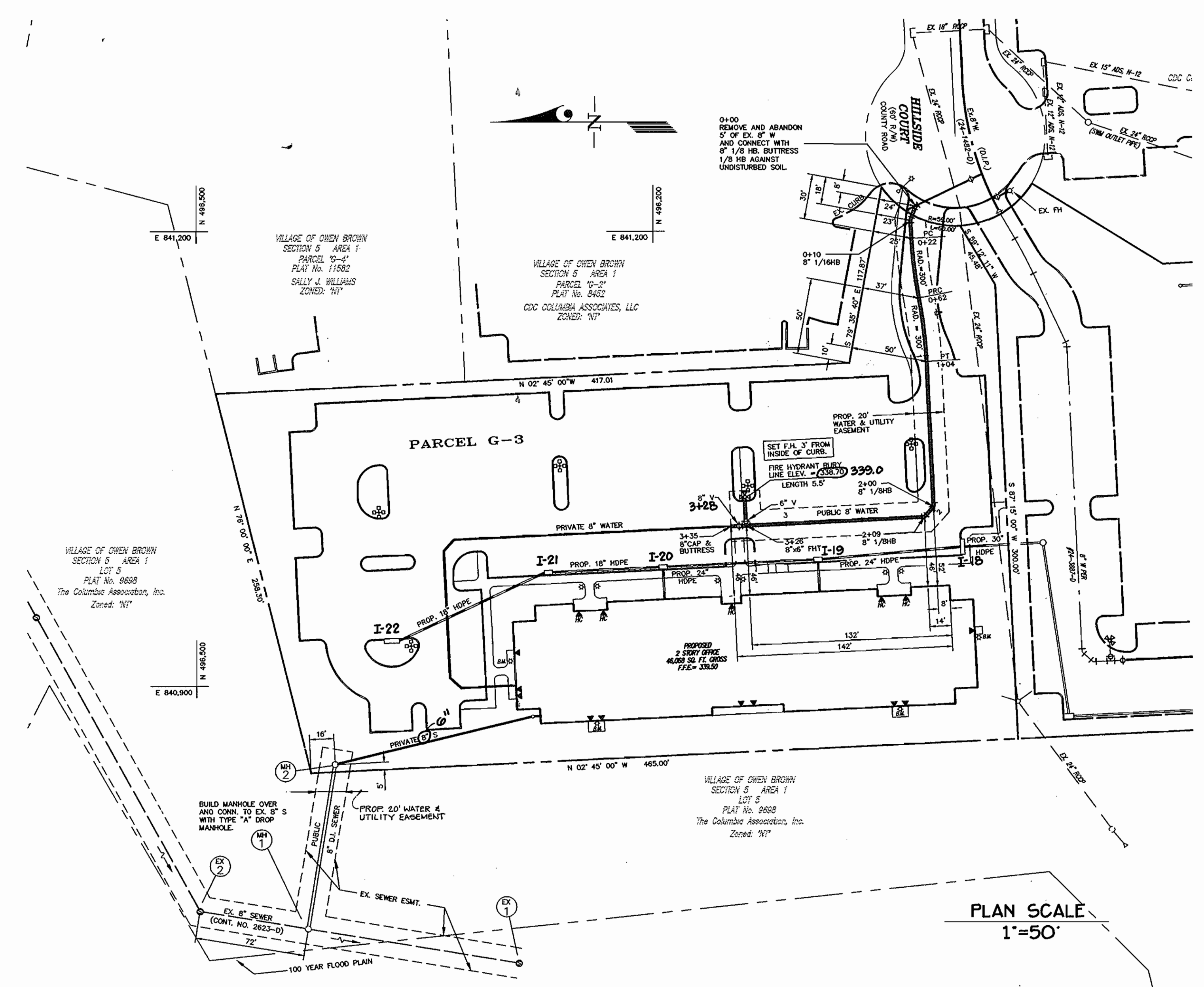
VILLAGE OF OWEN BROWN
CONTRACT# 24-3944-D
SECTION 5 AREA 1
PARCEL "G-3"
PLAT No. 8452

GILFORD ELECTION DISTRICT No. 6
HOWARD COUNTY, MARYLAND

GLW FILE No. 00151

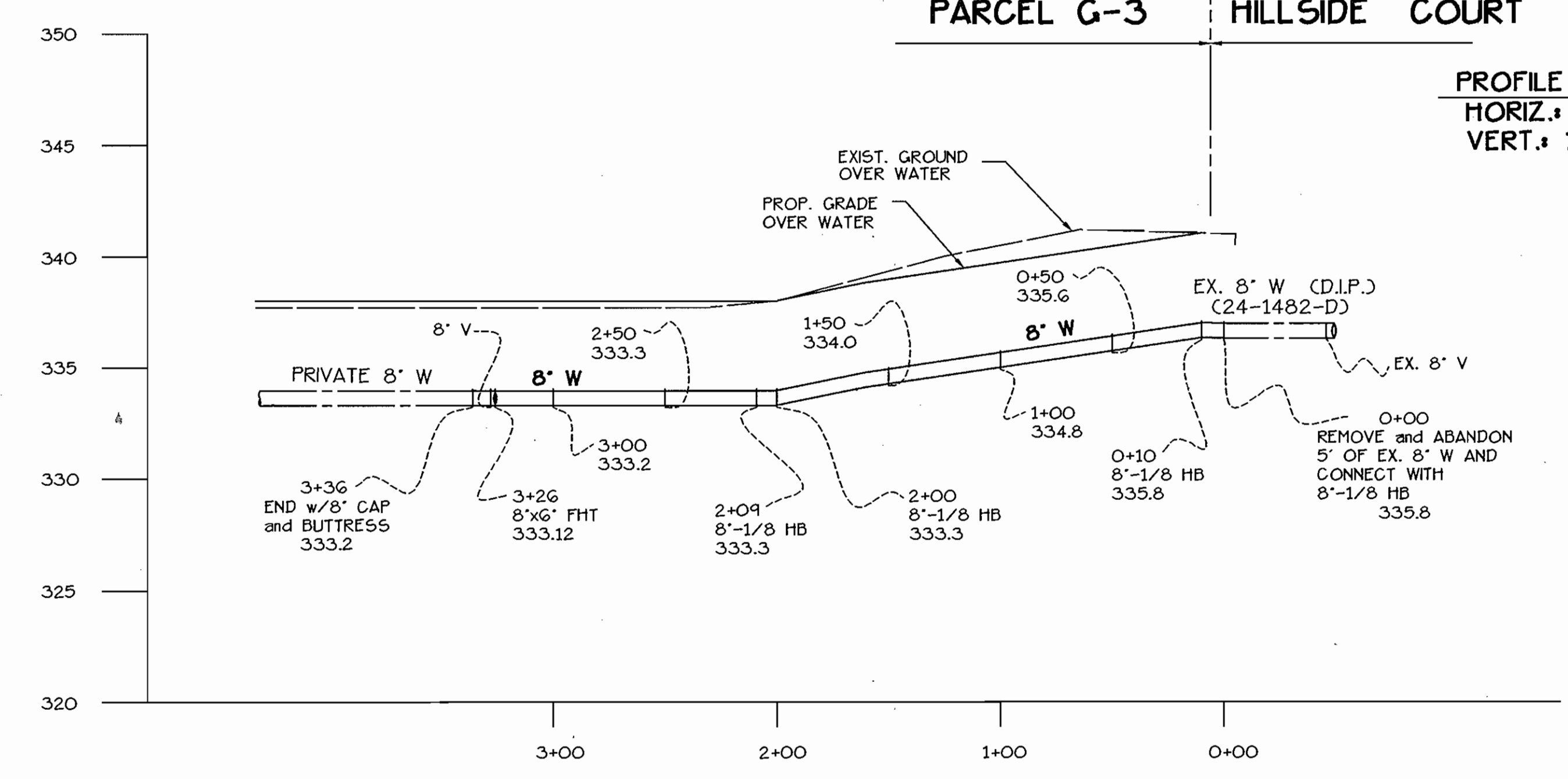
SCALE AS SHOWN

SHEET 1 OF 2



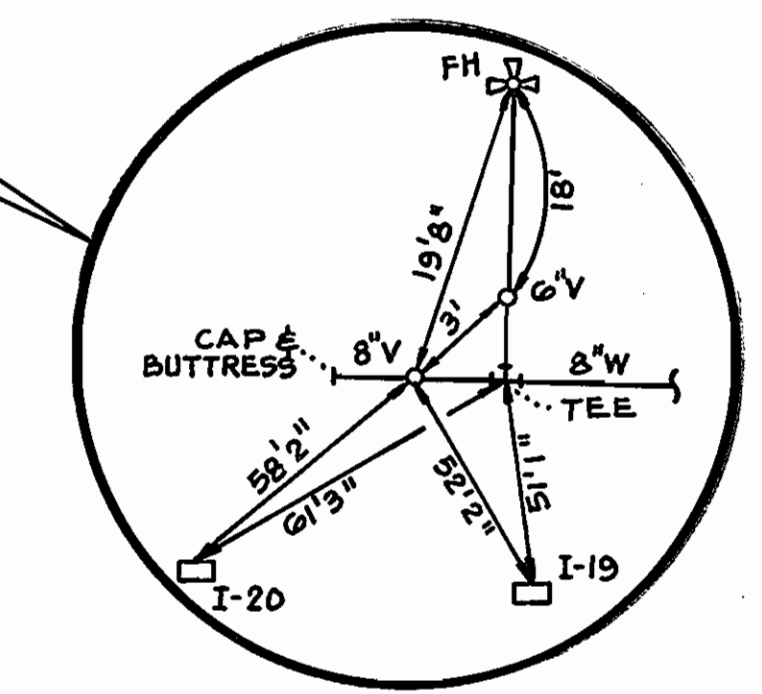
PLAN SCALE
1"=50'

PARCEL G-3 HILLSIDE COURT



PROFILE SCALE
HORIZ. 1"=50'
VERT. 1"=5'

VALVES	FROM	TO	DISTANCE	REMARKS
8"V 3+28	FH	VALVE	19.8'	SEE
	I-20	VALVE	58.2'	DETAIL
	I-19	VALVE	52.2'	THIS SHEET
6" FHV	FH	VALVE	18'	
3+28	I-20	VALVE	61.3'	
	I-19	VALVE	51.1'	



AS BUILT
DATE: NOVEMBER 2005

DEPARTMENT OF PUBLIC WORKS
HOWARD COUNTY, MARYLAND
3-9-01
CHIEF, BUREAU OF UTILITIES

DEPARTMENT OF PLANNING AND ZONING
HOWARD COUNTY, MARYLAND
3/14/01
CHIEF, DEVELOPMENT ENGINEERING DIVISION

GLW GUTSCHICK LITTLE & WEBER, P.A.
CIVIL ENGINEERS, LAND SURVEYORS, LAND PLANNERS, LANDSCAPE ARCHITECTS
3909 NATIONAL DRIVE - SUITE 250 - BURTONSVILLE OFFICE PARK
BURTONSVILLE, MARYLAND 20866
TEL: 301-421-4024 BALT: 410-880-1820 DC/VA: 301-989-2524 FAX: 301-421-4186



DES: SCC	BY	NO	REVISION	DATE
DRN: BB				
CHK: SCC				
DATE: 8/00				

PUBLIC WATER & SEWER
PLAN and PROFILES
600' SCALE MAP NO. 36 BLOCK NO. 14

VILLAGE OF OWEN BROWN
CONTRACT# 24-3944-D
SECTION 5 AREA 1
PARCEL "G-3"
PLAT No. 8452
GILFORD ELECTION DISTRICT No. 6
HOWARD COUNTY, MARYLAND

GLW FILE No. 00151
SCALE AS SHOWN
SHEET 2 OF 2