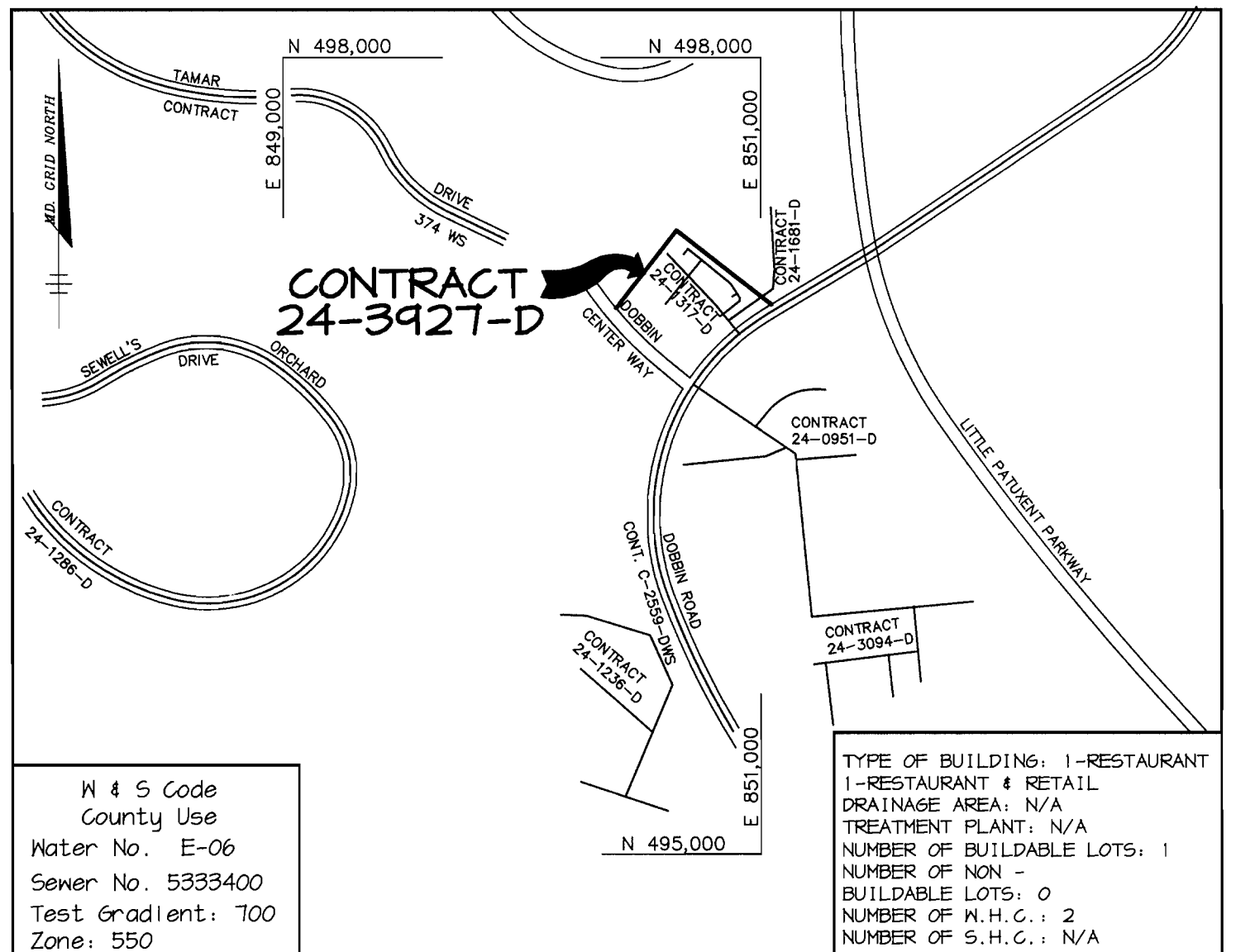


THE BALTIMORE GAS AND ELECTRIC COMPANY
RIGHT OF WAY
L. 280, F.315

BENCHMARKS

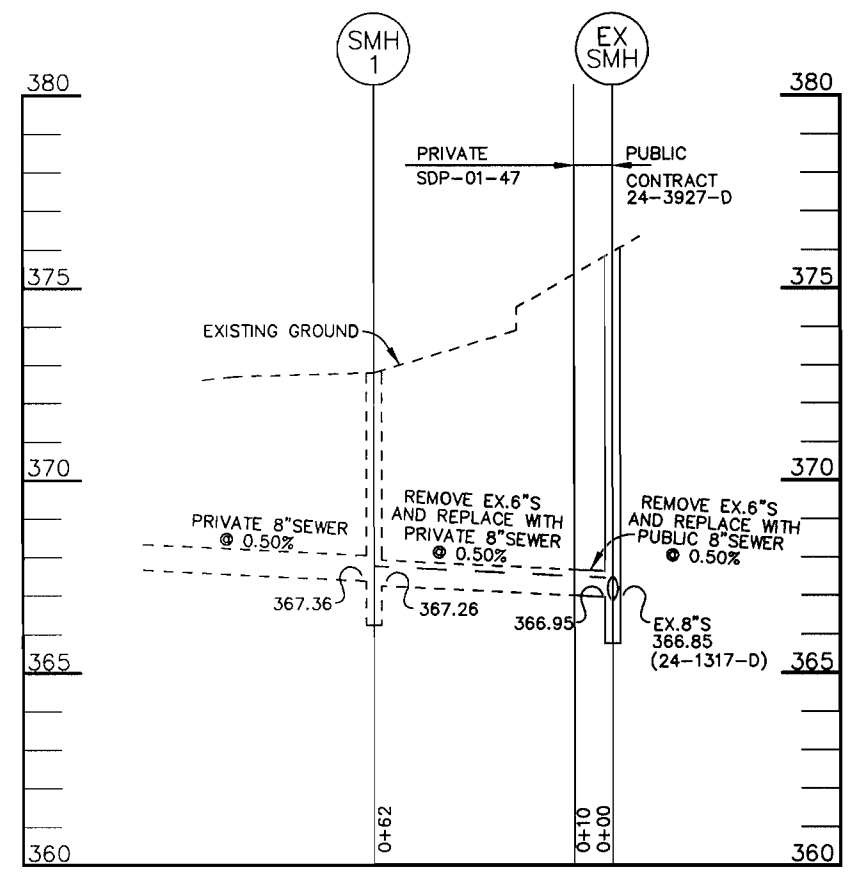
- BM #1 ELEV. 375.16
FIRE HYDRANT FLANGE NUT
LOCATED 160' NORTH OF DOBBIN CENTER WAY ALONG DOBBIN ROAD
- BM #2 ELEV. 377.99
FIRE HYDRANT TOP NUT
LOCATED ON THE NORTHEAST SIDE OF EXISTING RESTAURANT
- BM #3 ELEV. 371.66
FIRE HYDRANT TOP NUT
LOCATED ON THE NORTHWEST SIDE OF EXISTING RESTAURANT



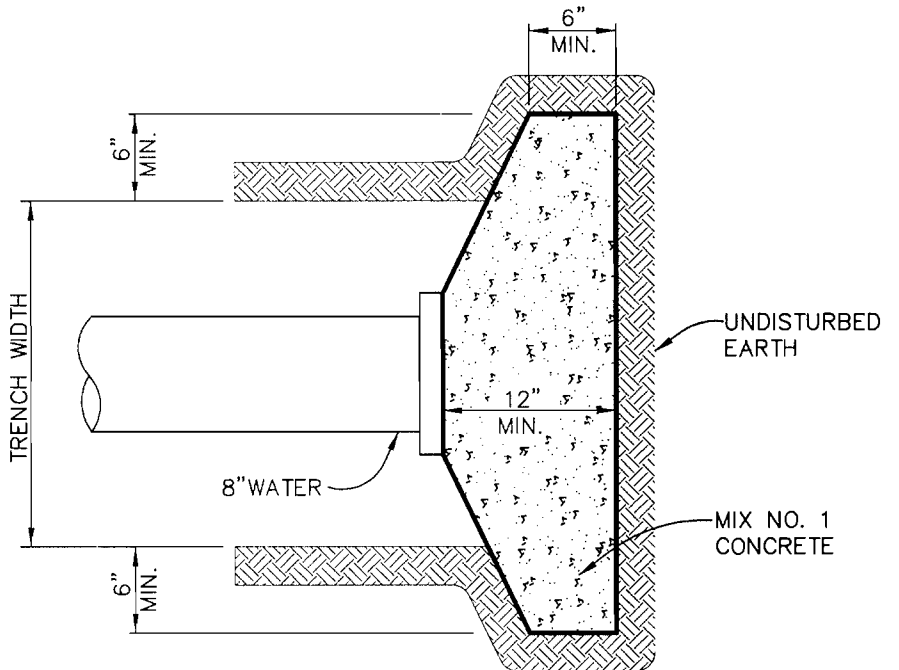
VICINITY MAP
SCALE : 1"=600'

M & S Code
County Use
Water No. E-06
Sewer No. 5333400
Test Gradient: 700
Zone: 550

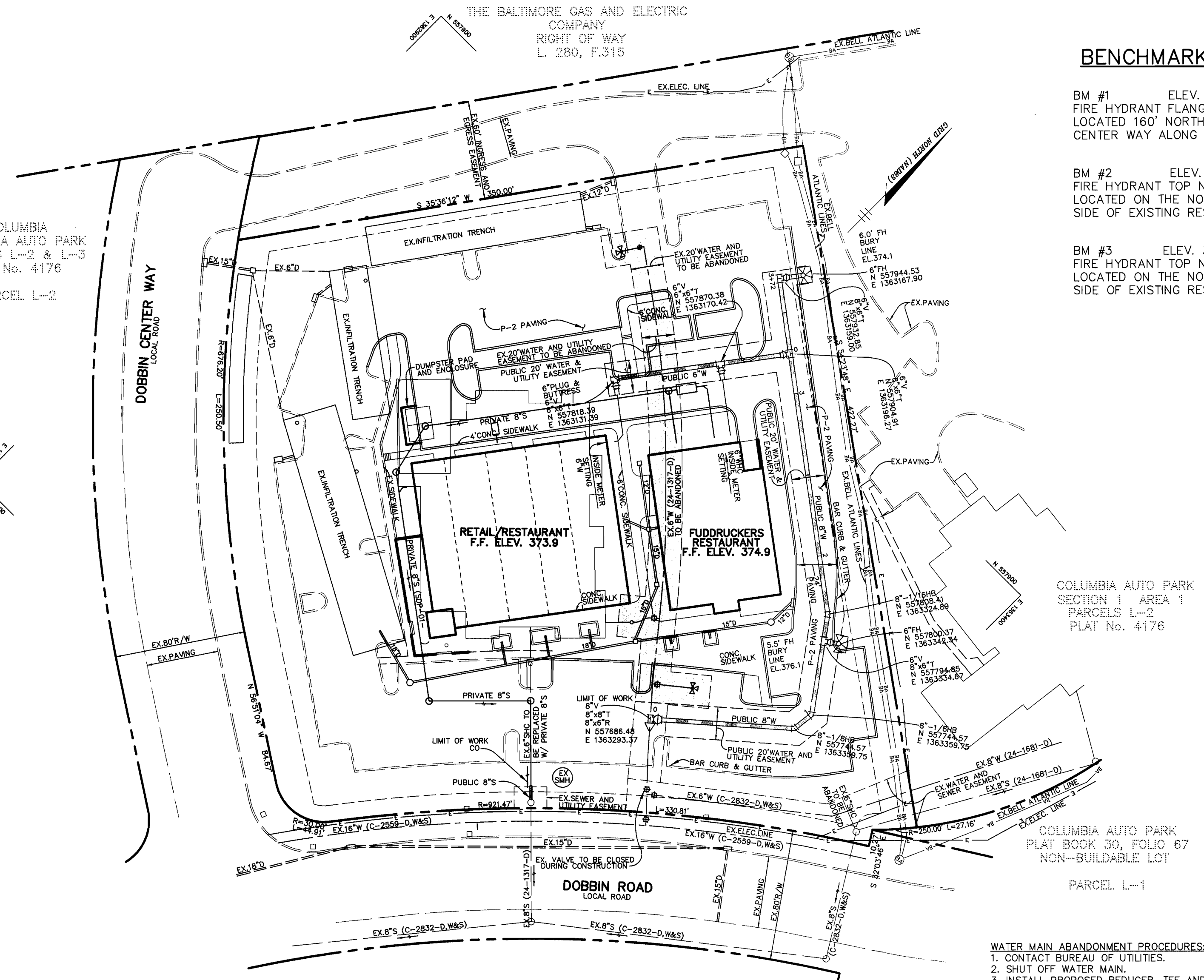
TYPE OF BUILDING: 1-RESTAURANT
1-RESTAURANT 4 RETAIL
DRAINAGE AREA: N/A
TREATMENT PLANT: N/A
NUMBER OF BUILDABLE LOTS: 1
NUMBER OF NON-BUILDABLE LOTS: 0
NUMBER OF H.C.G.: 2
NUMBER OF S.H.C.: N/A



PROFILE
SCALE
HOR.-1"=50'
VERT.-1"=5'

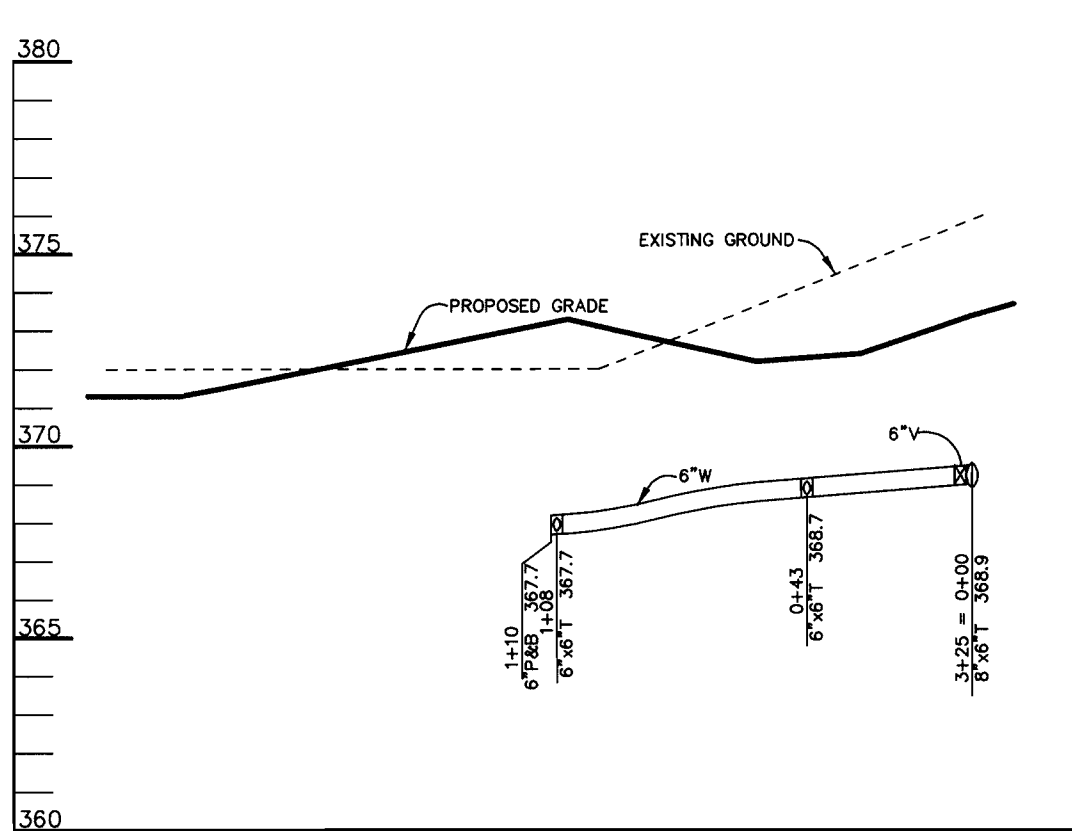


BUTTRISS DETAIL
NO SCALE

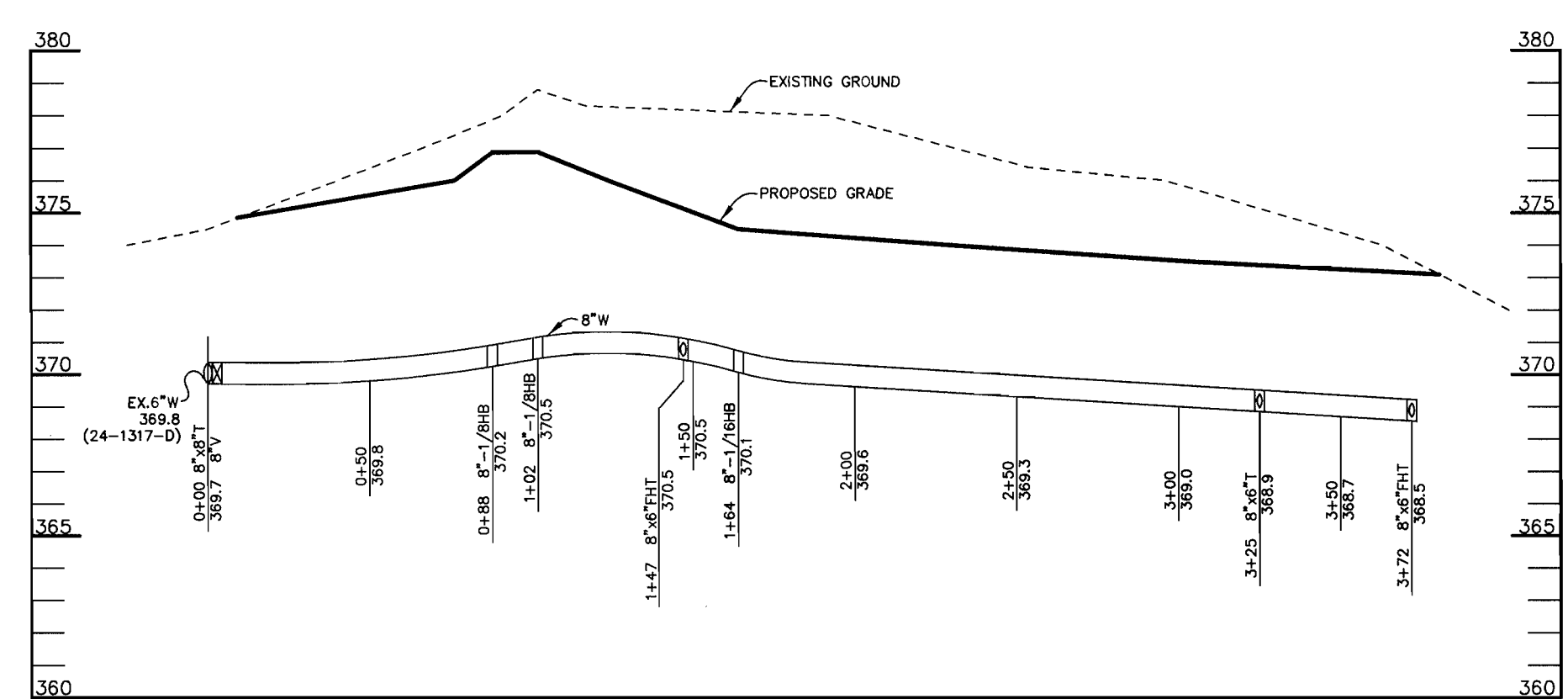


PLAN
SCALE : 1"=50'

- WATER MAIN ABANDONMENT PROCEDURES:**
1. CONTACT BUREAU OF UTILITIES.
 2. SHUT OFF WATER MAIN.
 3. INSTALL PROPOSED REDUCER, TEE AND VALVE.
 4. EXISTING TO BE FILLED WITH CONCRETE OR REMOVED AS NECESSARY.
 5. EXISTING FIRE HYDRANTS TO BE RETURNED TO BUREAU OF UTILITIES.



PROFILE
SCALE
HOR.-1"=50'
VERT.-1"=5'



PROFILE
SCALE
HOR.-1"=50'
VERT.-1"=5'

- GENERAL NOTES**
1. Approximate location of existing mains are shown. The contractor shall take all necessary precautions to protect existing mains and services and maintain uninterrupted supply. Any damage incurred shall be repaired immediately to the satisfaction of the Engineer at the contractor's expense.
 2. All horizontal controls are based on Maryland State Coordinates.
 3. All vertical controls are based on U.S.G.S. data.
 4. All pipe elevations shown are invert elevations.
 5. Clear all utilities by a minimum of 6". Clear all poles by 2'-0" minimum or tunnel as required. The owner has contacted the utility companies and has made arrangements for bracing of poles as shown on the drawings. In the event the contractor's work requires the bracing of additional poles, any cost incurred by the owner for bracing of additional poles or damages shall be deducted from money owed the contractor. The contractor shall coordinate with the utility companies to schedule the bracing of the poles.
 6. For details not shown on the drawings, and for materials and construction methods use Howard County Design Manual, Volume IV, Standard Specifications and Detail for Construction. (Latest Edition). The contractor shall have a copy of Volume IV on the job.
 7. Where test pits have been made on existing utilities, they are noted by the symbol [] at the location of the test pit. A note or notes containing the results of the test pit or pits is included on the drawings. Existing utilities in the vicinity of the proposed work for which test pits have not been dug shall be located by the contractor two weeks in advance of construction operations at his own expense.
 8. Contractor shall notify the following utility companies or agencies at least five working days before starting work shown on these plans:
State Highway Administration 410-531-5533
BGE Contractor Services 410-850-4620
BGE Underground Damage Control 410-241-4607
Miss Utility 1-800-251-TTTT
Colonial Pipeline Co. 410-549-4120
Howard County Department of Public Works Bureau of Utilities 410-313-4400
Bell Atlantic 1-800-446-5266
 9. Trees and shrubs are to be protected from damage to maximum extent. Trees and shrubs located within the construction strip are not to be removed or damaged by the contractor.
 10. Contractor shall remove trees, stumps and roots along line of excavation. Payment for such removal shall be included in the unit price bid for construction of the main.
 11. All water mains to be D.I.P. Class 52 unless otherwise noted.
 12. Tops of all water mains to have a minimum of 3-1/2' cover unless otherwise noted.
 13. Valves adjacent to tees shall be strapped to tees.
 14. All fittings shall be buttressed or anchored with concrete in accordance with the Standard Details unless otherwise provided for on the drawings.
 15. Fire hydrants shall be set to the bury line elevations shown on the drawings. All fire hydrants shall be restrained and buttressed with concrete in accordance with Standard Details. Soil around the fire hydrant shall be compacted in accordance with section 1000 and 1005 of the Standard Specifications.
 16. The contractor shall not operate any water main valves on the existing water system.
 17. All water house connections shall be for inside meter setting unless otherwise noted on plans or in specifications.
 18. Contractor is solely responsible for construction means, methods, techniques, sequences, procedures, and safety precautions and programs.
 19. The fire hydrant shall be installed as per standard detail N.1.11.
 20. Fire hydrants will be located 3' FROM BACK OF CURB unless otherwise noted.
 21. For sprinkler systems, all townhomes or multi-family dwelling units should have a minimum of 1' connection with a 3/4" meter.
 22. The contractor shall notify the Bureau of Highways, Howard County, at (410) 313-1450 at least five (5) working days before any open cut of any county road or boring/lacking operation in county roads for laying water/sewer mains or house connections. The approval of these drawings will constitute compliance with DPM requirements per Section 18.114(a) of the Howard County Code.
 23. Howard County DPM is hereby granted permission to access private lots shown on these plans in order to maintain public water and sewer house connections at the curb steps and/or clearcuts.

QUANTITIES

ITEMS	QUANTITIES ESTIMATED	AS-BUILT		
		QUANTITIES	TYPE	MANUFACTURER / SUPPLIER
8" WATER	372 LF			
6" WATER	154 LF			
FIRE HYDRANTS	2 EA.			
6" VALVES	4 EA.			
8" VALVES	1 EA.			
8" SEWER	10 LF			

NAME OF UTILITY CONTRACTOR:

Sediment control measures for this contract will be implemented in accordance with Section 219 of the Specifications and as shown on SDP-01-47

Review for Howard Soil Conservation District and meets technical requirements.

J. G. Walsh / *es* 12/15/00
NATURAL RESOURCES CONSERVATION SERVICE DATE

This plan is approved for soil erosion and sediment control by the Howard Soil Conservation District.

[Signature] 12/15/00
HOWARD SOIL CONSERVATION DISTRICT DATE

DEPARTMENT OF PUBLIC WORKS
HOWARD COUNTY, MARYLAND

DEPARTMENT OF PLANNING & ZONING
HOWARD COUNTY, MARYLAND

[Signature] 12-11-00
CHIEF, BUREAU OF UTILITIES DATE

[Signature] 12/17/00
CHIEF, DEVELOPMENT ENGINEERING DIVISION DATE

RIEMER MUEGGE & ASSOCIATES INC.
ENGINEERING • ENVIRONMENTAL SERVICES • PLANNING • SURVEYING
8818 Centre Park Drive, Columbia, MD 21046
Tel 410.987.2800 Fax 410.987.2822
00142 WSS.DWG

ARTHUR E. MUEGGE #8707

DES: C.J.R.
DRN: DAM
CHK: C.J.R.
DATE: 12/6/00

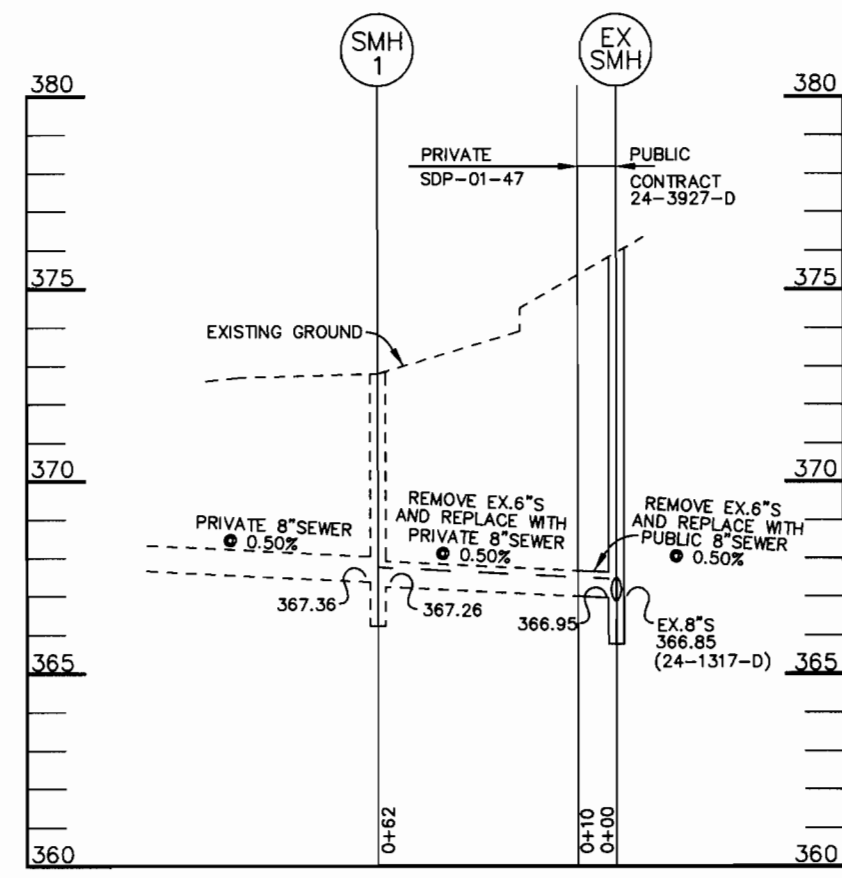
BY NO. REVISION DATE

PLAN AND PROFILE OF WATER AND SEWER MAINS

600' SCALE MAP NO. 36 BLOCK NO. 17

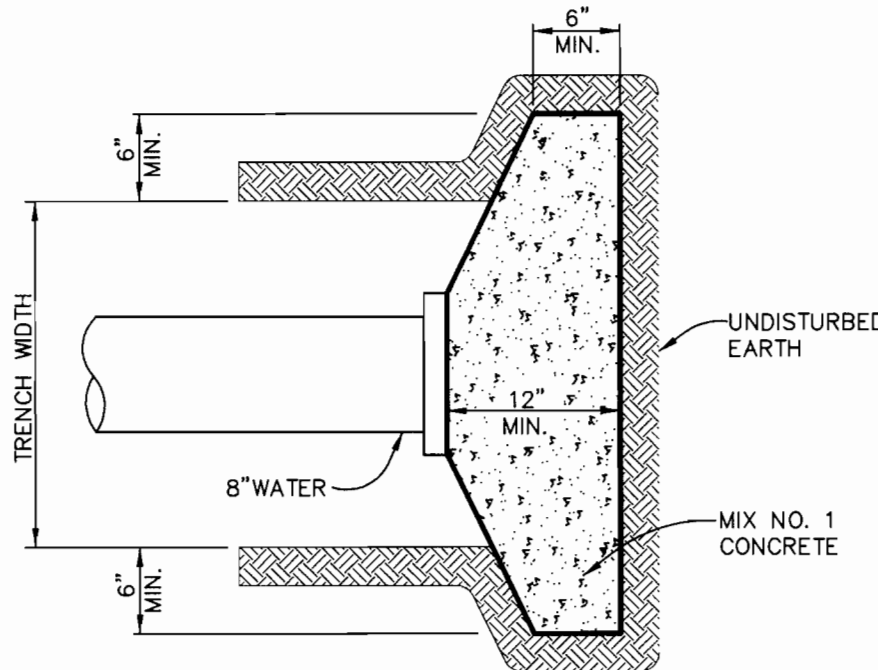
THE SHOPPES AT DOBBIN WAY
COLUMBIA AUTO PARK
PARCEL L-3
6th ELECTION DISTRICT
HOWARD COUNTY, MARYLAND
CONTRACT 24-3927-D

SCALE AS SHOWN
SHEET 1 OF 1



PROFILE

SCALE:
HOR. - 1" = 50'
VERT. - 1" = 5'



BUTTRESS DETAIL

NO SCALE

QUANTITIES

ITEMS	QUANTITIES ESTIMATED	AS-BUILT		
		QUANTITIES	TYPE	MANUFACTURER / SUPPLIER
8" WATER	372 LF		D.I.P. TYTON JR. CL-52	ATLANTIC STATES
6" WATER	154 LF		D.I.P. TYTON JR. CL-52	ATLANTIC STATES
FIRE HYDRANTS	2 EA.		4G A 425 CENTURION HYD.	MUELLER CO.
6" VALVES	4 EA.		RES WEDGE GATE VALVE	MUELLER CO.
8" VALVES	1 EA.		RES WEDGE GATE VALVE	MUELLER CO.
8" SEWER	10 LF		SDR 35 P.V.C. PIPE	J.M. MANUFACTURING

NAME OF UTILITY CONTRACTOR: UTILITIES UNLIMITED, INC.
 Sediment control measures for this contract will be implemented in accordance with Section 214 of the specifications and as shown on SDP-01-47

Review for Howard Soil Conservation District and meets technical requirements.
John Washfield 12/15/00
 NATURAL RESOURCES CONSERVATION SERVICE DATE

This plan is approved for soil erosion and sediment control by the Howard Soil Conservation District.
Arthur E. Muegge 12/15/00
 HOWARD SOIL CONSERVATION DISTRICT DATE

DEPARTMENT OF PUBLIC WORKS
 HOWARD COUNTY, MARYLAND
Robert Berman 12-11-00
 CHIEF, BUREAU OF UTILITIES DATE

DEPARTMENT OF PLANNING & ZONING
 HOWARD COUNTY, MARYLAND
Arthur E. Muegge 12/17/00
 CHIEF, DEVELOPMENT ENGINEERING DIVISION DATE

RIEMER MUEGGE & ASSOCIATES INC.
 ENGINEERING • ENVIRONMENTAL SERVICES • PLANNING • SURVEYING
 8918 Centre Park Drive, Columbia, MD 21046
 Tel 410.987.8800 Fax 410.987.8822
 00142 WS2.DWG

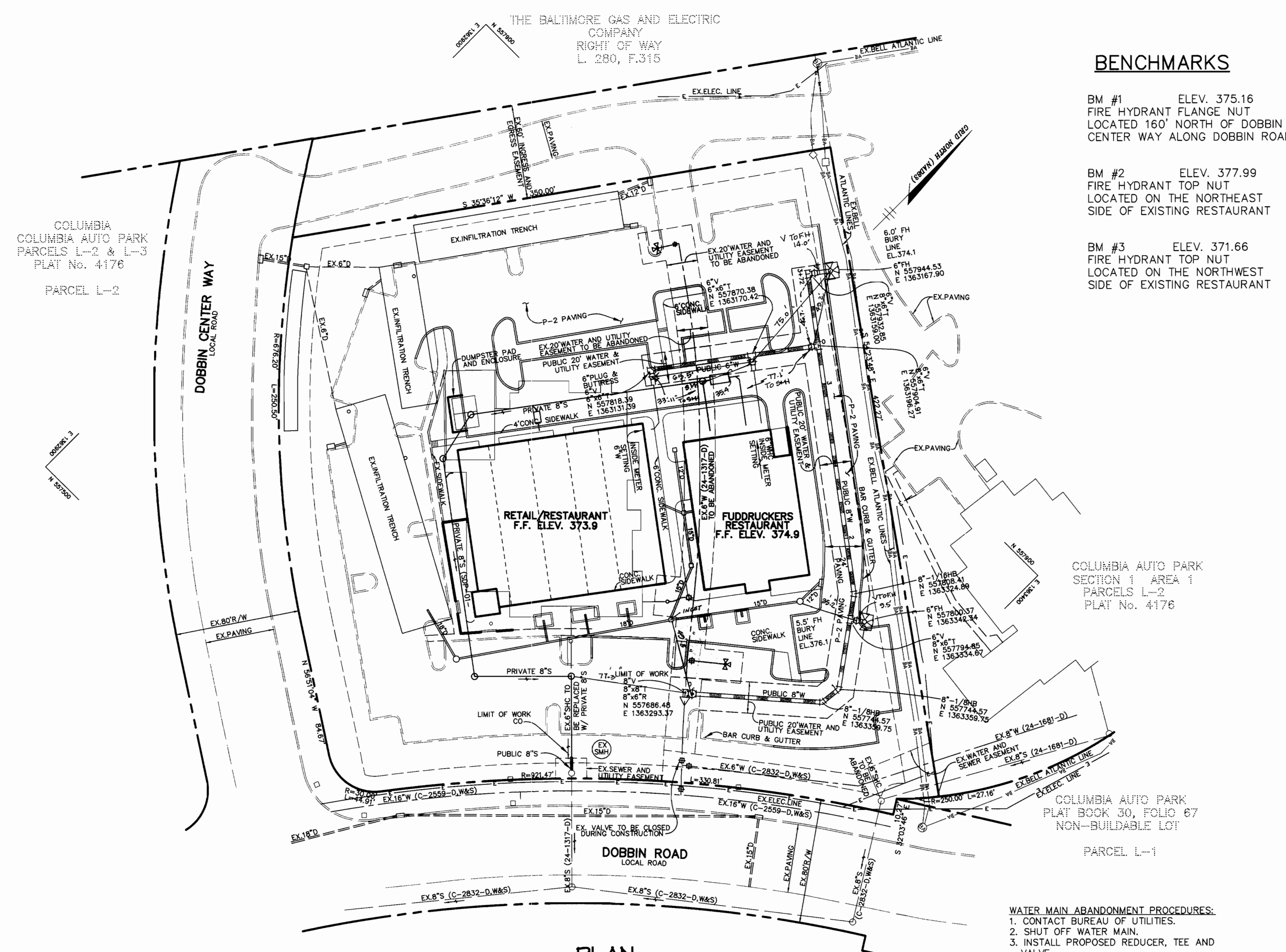
ARTHUR E. MUEGGE #8707

DES: C.J.R.	
DRN: DAM	
CHK: C.J.R.	
DATE: 12/6/00	
K.C.I. 1	AS-BUILT CONDITIONS ADDED TO PLAN
BY NO.	REVISION
	DATE

PLAN AND PROFILE OF WATER AND SEWER MAINS

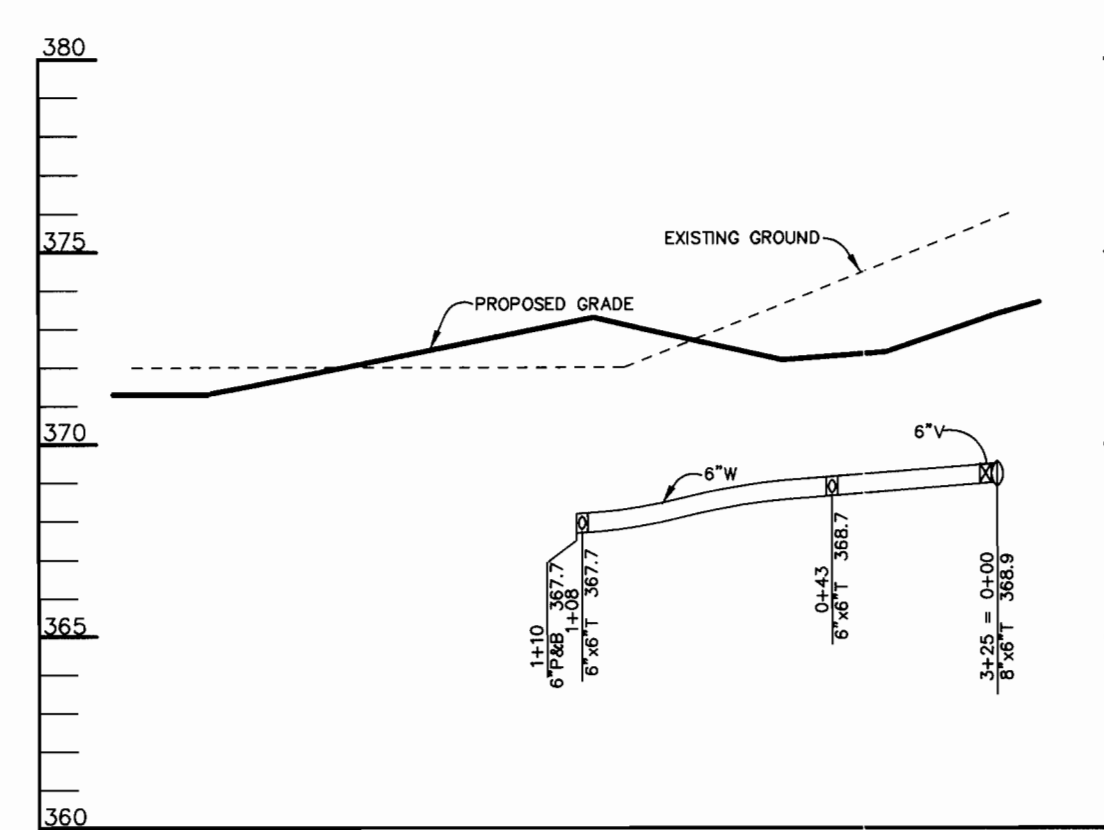
THE SHoppes AT DOBBIN WAY
 COLUMBIA AUTO PARK
 PARCEL L-3
 6th ELECTION DISTRICT
 HOWARD COUNTY, MARYLAND
 CONTRACT 24-3927-D

SCALE AS SHOWN
 SHEET 1 OF 1



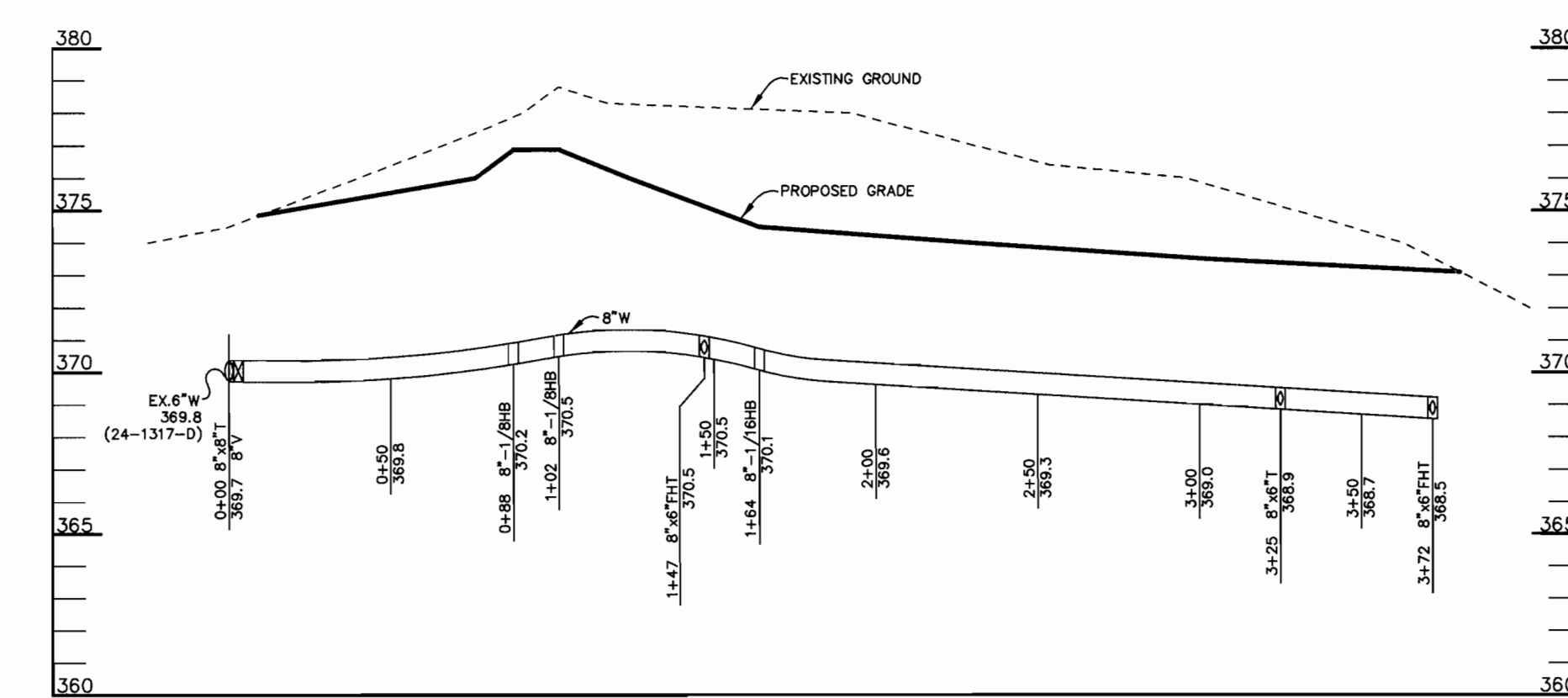
PLAN

SCALE: 1" = 50'



PROFILE

SCALE:
HOR. - 1" = 50'
VERT. - 1" = 5'

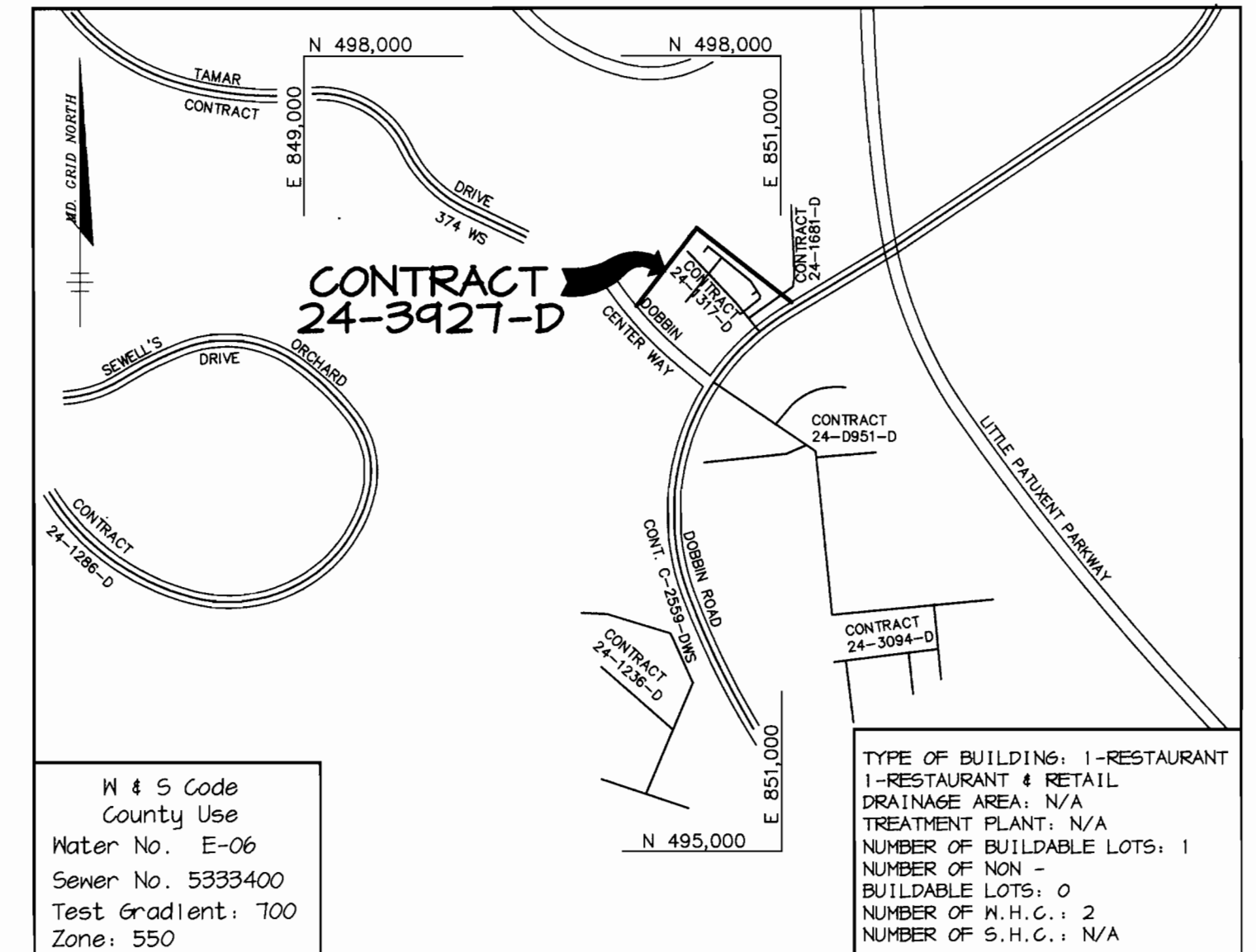


PROFILE

SCALE:
HOR. - 1" = 50'
VERT. - 1" = 5'

BENCHMARKS

- BM #1 ELEV. 375.16
FIRE HYDRANT FLANGE NUT
LOCATED 160' NORTH OF DOBBIN
CENTER WAY ALONG DOBBIN ROAD
- BM #2 ELEV. 377.99
FIRE HYDRANT TOP NUT
LOCATED ON THE NORTHEAST
SIDE OF EXISTING RESTAURANT
- BM #3 ELEV. 371.66
FIRE HYDRANT TOP NUT
LOCATED ON THE NORTHWEST
SIDE OF EXISTING RESTAURANT



VICINITY MAP

SCALE: 1" = 600'

GENERAL NOTES

- Approximate location of existing mains are shown. The contractor shall take all necessary precautions to protect existing mains and services and maintain uninterrupted supply. Any damage incurred shall be repaired immediately to the satisfaction of the Engineer at the Contractor's expense.
- All horizontal controls are based on Maryland State Coordinates.
- All vertical controls are based on U.S.G.S. data.
- All pipe elevations shown are invert elevations.
- Clear all utilities by a minimum of 6". Clear all poles by 2'-0" minimum or tunnel as required. The owner has contacted the utility companies and has made arrangements for bracing of poles as shown on the drawings. In the event the contractor's work requires the bracing of additional poles, any cost incurred by the owner for bracing of additional poles or damages shall be deducted from money owed the contractor. The contractor shall coordinate with the utility companies to schedule the bracing of the poles.
- For details not shown on the drawings, and for materials and construction methods use Howard County Design Manual, Volume IV, Standard Specifications and Detail for Construction (Latest Edition). The contractor shall have a copy of Volume IV on the job.
- Where test pits have been made on existing utilities, they are noted by the symbol at the location of the test pit. A note or notes containing the results of the test pit or pits is included on the drawings. Existing utilities in the vicinity of the proposed work for which test pits have not been dug shall be located by the contractor two weeks in advance of construction operations at his own expense.
- Contractor shall notify the following utility companies and agencies at least five working days before starting work shown on these plans:
 State Highway Administration 410-531-5533
 B&E Contractor Services 410-850-4620
 B&E Underground Damage Control 410-291-4607
 Wise Utility 1-800-281-TTTT
 Colonial Pipeline Co. 410-544-4120
 Howard County Department of Public Works Bureau of Utilities 410-313-4400
 Bell Atlantic 1-800-446-5266
- Trees and shrubs are to be protected from damage to maximum extent. Trees and shrubs located within the construction strip are not to be removed or damaged by the contractor.
- Contractor shall remove trees, stumps and roots along line of excavation. Payment for such removal shall be included in the unit price bid for construction of the main.
- All water mains to be D.I.P. Class 52 unless otherwise noted.
- Tops of all water mains to have a minimum of 3'-1/2' cover unless otherwise noted.
- Valves adjacent to tees shall be strapped to tees.
- All fittings shall be buttressed or anchored with concrete in accordance with the Standard Details unless otherwise provided for on the drawings.
- Fire hydrants shall be set to the bury line elevations shown on the drawings. All fire hydrants shall be restrained and buttressed with concrete in accordance with Standard Details. Soil around the fire hydrant shall be compacted in accordance with Section 1000 and 1005 of the Standard Specifications.
- The contractor shall not operate any water main valves on the existing water system.
- All water house connections shall be for inside meter setting unless otherwise noted on plans or in specifications.
- Contractor is solely responsible for construction means, methods, techniques, sequences, procedures, and safety precautions and programs.
- The fire hydrant shall be installed as per standard detail N.1.11.
- Fire hydrants will be located 3' FROM BACK OF CURB unless otherwise noted.
- For sprinkler systems, all townhomes or multi-family dwelling units should have a minimum of 1" connection with a 3/4" meter.
- The contractor shall notify the Bureau of Highways, Howard County, at (410) 313-7450 at least five (5) working days before any open cut of any county road or boring/jacking operation in County roads for laying water/sewer mains or house connections. The approval of these drawings will constitute compliance with DPM requirements per Section 18.114(a) of the Howard County Code.
- Howard County DPM is hereby granted permission to access private lots shown on these plans in order to maintain public water and sewer house connections at the curb stops and/or cleanouts.

F:\PROJECT\00142\WS2.dwg Wed Dec 06 13:29:28 2000 RIEMER MUEGGE & ASSOCIATES, INC.