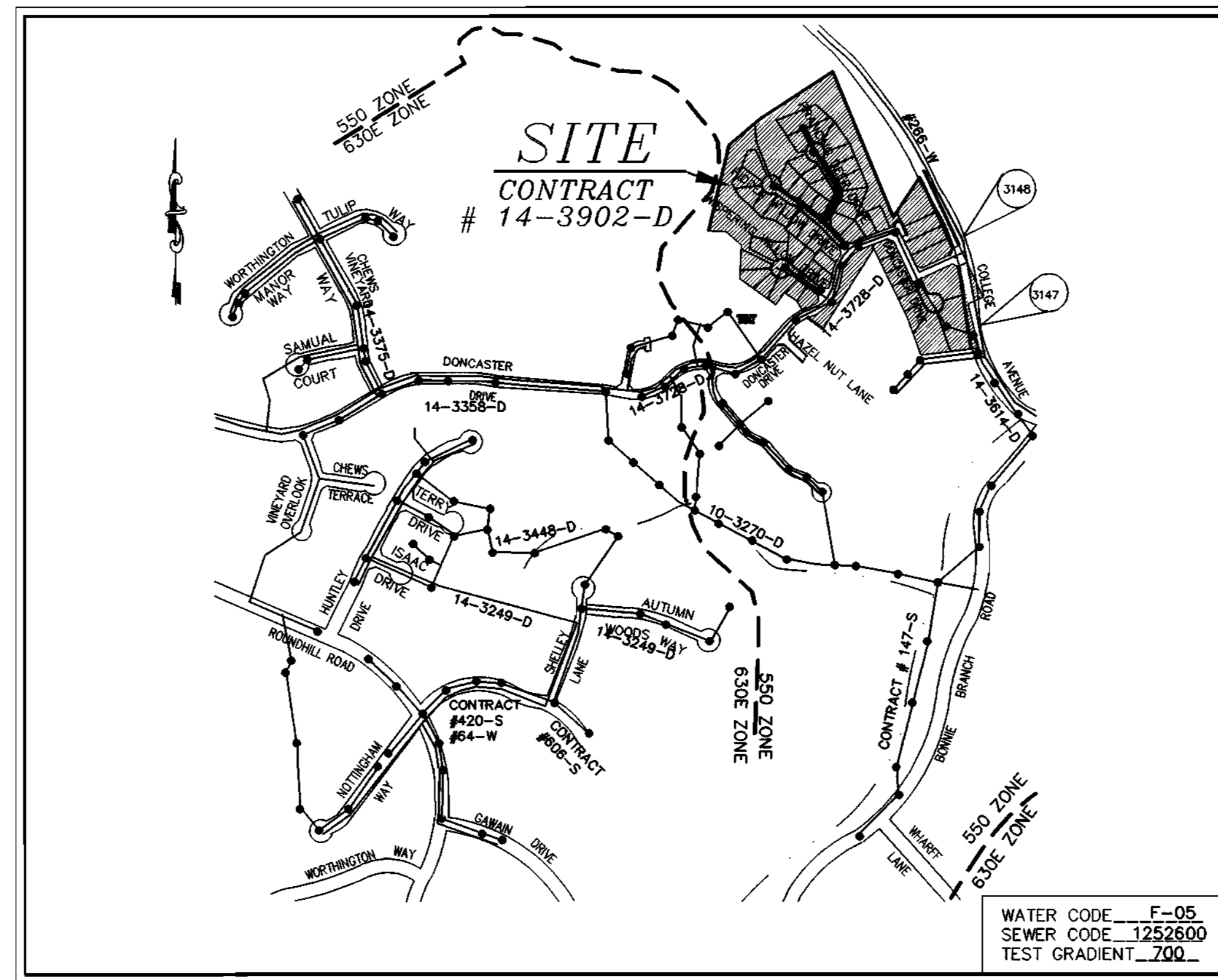


QUANTITY TABLE

| ITEMS | QUANTITIES ESTIMATED | QUANTITIES | | |
|--------------------------------------------|----------------------|------------|-----------------------|--|
| | | TYPE | MANUFACTURER/SUPPLIER | |
| STANDARD MH | 13 | | | |
| 8" SEWER MAIN | 1,540 L.F. | | | |
| 4" SEWER HOUSE CONNECTION | 660 L.F. | | | |
| # SEWER HOUSE CONNECTION | 37 EACH | | | |
| 8" WATER | 1,770 L.F. | | | |
| 1" WATER HOUSE CONNECTION | 750 L.F. | | | |
| # 1" WHC | 42 EACH | | | |
| F.H. | 5 EACH | | | |
| 8"x 8" T | 3 EACH | | | |
| 8"x 6" T | 5 EACH | | | |
| 8" V | 3 EACH | | | |
| 6" V | 5 EACH | | | |
| 8" CAP & BUTTRESS | 3 EACH | | | |
| 1/32 H.B. (8") | 2 EACH | | | |
| 1/16 H.B. (8") | 5 EACH | | | |
| 1/8 H.B. (8") | 1 EACH | | | |
| 6" WATER | 160 L.F. | | | |
| NAME OF UTILITY CONTRACTOR: | | | | |
| SURVEY AND DRAFTING DIVISION AS-BUILT DATE | | | | |



VICINITY MAP

SCALE: 1"=600'

| | |
|--------------------------------|------------------------------------------------|
| TYPE OF BUILDING | SFD |
| No. OF UNITS | 57 |
| No. OF WATER HOUSE CONNECTION | 42 |
| No. OF SEWER HOUSE CONNECTIONS | 37 |
| DRAINAGE AREA | BONNIE BRANCH, PATAPSCO |
| TREATMENT PLANT | PATAPSCO WASTEWATER TREATMENT PLANT, BALTIMORE |

GENERAL NOTES

- APPROXIMATE LOCATION OF EXISTING MAINS ARE SHOWN. THE CONTRACTOR SHALL TAKE ALL NECESSARY PRECAUTIONS TO PROTECT EXISTING MAINS AND SERVICES AND MAINTAIN UNINTERRUPTED SUPPLY. ANY DAMAGE INCURRED SHALL BE REPAIRED IMMEDIATELY TO THE SATISFACTION OF THE ENGINEER AT THE CONTRACTOR'S EXPENSE.
- COORDINATES BASED ON NAD'83 MARYLAND COORDINATE SYSTEM AS PROJECTED BY HOWARD COUNTY GEODETIC CONTROL STATIONS NO. 3147 AND 3148.
STA. 3147 N575598.0794, E1375801.7684, EL=335.987
STA. 3148 N576015.4313, E1375770.4364, EL=379.248
- ALL PIPE ELEVATIONS SHOWN ARE INVERT ELEVATIONS.
- CLEAR ALL UTILITIES BY A MINIMUM OF 1'. CLEAR ALL POLES BY 2'-0" MINIMUM OR TUNNEL AS REQUIRED. THE OWNER HAS CONTACTED THE UTILITY COMPANIES AND HAS MADE ARRANGEMENTS FOR BRACING OF POLES AS SHOWN ON THE DRAWINGS. IN THE EVENT THE CONTRACTOR'S WORK REQUIRES THE BRACING OF ADDITIONAL POLES, ANY COST INCURRED BY THE OWNER FOR BRACING OF ADDITIONAL POLES OR DAMAGES SHALL BE DEDUCTED FROM MONEY OWED THE CONTRACTOR. THE CONTRACTOR SHALL COORDINATE WITH THE UTILITY COMPANIES TO SCHEDULE THE BRACING OF THE POLES.
- FOR DETAILS NOT SHOWN ON THE DRAWINGS, AND FOR MATERIALS AND CONSTRUCTION METHODS USE HOWARD COUNTY DESIGN MANUAL, VOLUME IV, STANDARD SPECIFICATIONS AND DETAIL FOR CONSTRUCTION (LATEST EDITION). THE CONTRACTOR SHALL HAVE A COPY OF VOLUME IV ON THE JOB.
- WHERE TEST PITS HAVE BEEN MADE ON EXISTING UTILITIES, THEY ARE NOTED BY THE SYMBOL AT THE LOCATION OF THE TEST PIT. A NOTE OR NOTES CONTAINING THE RESULTS OF THE TEST PIT OR PITS IS INCLUDED ON THE DRAWINGS. EXISTING UTILITIES IN THE VICINITY OF THE PROPOSED WORK FOR WHICH TEST PITS HAVE NOT BEEN DUG SHALL BE LOCATED BY THE CONTRACTOR TWO WEEKS IN ADVANCE OF CONSTRUCTION OPERATIONS AT HIS OWN EXPENSE. CONTRACTOR SHALL NOTIFY THE FOLLOWING UTILITY COMPANIES OR AGENCIES AT LEAST FIVE WORKING DAYS BEFORE STARTING WORK SHOWN ON THESE PLANS:
STATE HIGHWAY ADMINISTRATION (410) 531-5533
BG & E CO. CONTRACTOR SERVICES (410) 850-4620
BG & E CO. UNDERGROUND DAMAGE CONTROL (410) 787-9668
MISS UTILITY 1-800-257-7777
COLONIAL PIPELINE CO. (410) 795-1390
HOWARD COUNTY DEPARTMENT OF PUBLIC WORKS (410) 313-4900
BUREAU OF UTILITIES (410) 313-4900
- TREES AND SHRUBS ARE TO BE PROTECTED FROM DAMAGE TO THE MAXIMUM EXTENT. TREES AND SHRUBS LOCATED OUTSIDE THE CONSTRUCTION STRIP ARE NOT TO BE REMOVED OR DAMAGED BY THE CONTRACTOR.
- CONTRACTOR SHALL REMOVE TREES, STUMPS AND ROOTS ALONG LINE OF EXCAVATION. PAYMENT FOR SUCH REMOVAL SHALL BE INCLUDED IN THE UNIT PRICE BID FOR CONSTRUCTION OF THE MAIN.
- THE CONTRACTOR SHALL NOTIFY THE BUREAU OF HIGHWAYS, HOWARD COUNTY, AT (410)313-2450 AT LEAST FIVE (5) WORKING DAYS BEFORE ANY OPEN CUT OF ANY COUNTY ROAD OR BORING/JACKING OPERATION IN COUNTY ROADS FOR LAYING WATER/SEWER MAINS OR HOUSE CONNECTIONS. THE APPROVAL OF THESE DRAWINGS WILL CONSTITUTE COMPLIANCE WITH DPW REQUIREMENTS PER SECTION 18.114(c) OF HOWARD COUNTY CODE.
- ALL WATER MAINS TO BE D.I.P. CLASS 52 UNLESS OTHERWISE NOTED.
- TOPS OF ALL WATER MAINS TO HAVE A MINIMUM OF 3'-1/2' COVER UNLESS OTHERWISE NOTED.
- VALVES ADJACENT TO TEES SHALL BE STRAPPED TO TEES.
- ALL FITTINGS SHALL BE BUTTRESSED OR ANCHORED WITH CONCRETE IN ACCORDANCE WITH THE STANDARD DETAILS UNLESS OTHERWISE PROVIDED FOR ON THE DRAWINGS.
- FIRE HYDRANTS SHALL BE SET TO THE BURY LINE ELEVATIONS SHOWN ON THE DRAWINGS. ALL FIRE HYDRANTS SHALL BE STRAPPED AND BUTTRESSED WITH CONCRETE IN ACCORDANCE WITH STANDARD DETAILS. SOIL AROUND THE FIRE HYDRANT SHALL BE COMPACTED IN ACCORDANCE WITH SECTION 1000 AND 1005 OF THE STANDARD SPECIFICATIONS.
- THE CONTRACTOR SHALL NOT OPERATE ANY WATER MAIN VALVES ON THE EXISTING WATER SYSTEM.
- ALL WATER HOUSE CONNECTIONS SHALL BE FOR INSIDE METER SETTING UNLESS OTHERWISE NOTED ON PLANS OR IN SPECIFICATIONS.
- FOR SPRINKLER SYSTEM FOR ALL TOWNHOMES OR MULTI-FAMILY DWELLING UNITS SHOULD HAVE A MINIMUM OF 1" CONNECTION WITH A 3/4" METER.
- ALL SEWER MAINS SHALL BE P.V.C. OR D.I.P. CLASS 52 UNLESS OTHERWISE NOTED.
- ALL MANHOLES SHALL BE 4'-0" INSIDE DIAMETER UNLESS OTHERWISE NOTED.
- MANHOLES DESIGNATED W.T. IN PLAN AND PROFILE SHALL HAVE WATER TIGHT FRAME AND COVERS, STANDARD DETAIL CS.52. WHERE WATER TIGHT MANHOLE FRAME AND COVER IS USED, SET TOP OF FRAME 1' - 6" ABOVE FINISHED GRADE UNLESS OTHERWISE NOTED ON THE DRAWINGS.
- STATIONING SHOWN IS WATER MAIN AND CENTER LINE STATIONING.
- CONTRACTOR TO VERIFY THE LOCATION OF ALL EXISTING UTILITIES PRIOR TO COMMENCING CONSTRUCTION.
- SEDIMENT CONTROL TO BE PROVIDED BY F-01-15
- ALL SEWER HOUSE CONNECTIONS TO BE 4" IN SIZE.
- ALL WATER HOUSE CONNECTIONS TO BE 1" IN SIZE UNLESS OTHERWISE NOTED.
- ALL CELLARS WILL HAVE SERVICE TO LOWEST FLOOR UNLESS OTHERWISE NOTED.
- THE EXISTING WELL AND SEPTIC SERVICING EXISTING HOUSE(S) ARE TO BE ABANDONED.
- STORM DRAIN SYSTEM INDICATED FOR INFORMATIONAL PURPOSES ONLY. SEE ROAD PLANS FOR CONSTRUCTION DATA.
- COMPACTION IN FILL AREAS TO BE 95% AS DETERMINED PER AASHTO T-180.

EROSION AND SEDIMENT CONTROL FOR THIS CONTRACT IS PROVIDED UNDER F-01-15

CONTRACT NO.: 14-3902-D
AUTUMN VIEW, SECTION 4, LOTS 152-210
WATER AND SEWER MAIN EXTENSIONS
HOWARD COUNTY, MARYLAND
DEPARTMENT OF PUBLIC WORKS

INDEX OF DRAWINGS

| NO. | DESCRIPTION |
|-----|----------------------|
| 1 | TITLE SHEET |
| 2 | WATER AND SEWER PLAN |
| 3 | WATER AND SEWER PLAN |
| 4 | WATER PROFILES |
| 5 | SEWER PROFILES |

I/WE CERTIFY THAT ALL DEVELOPMENT AND CONSTRUCTION WILL BE DONE ACCORDING TO THIS PLAN, AND THAT ANY RESPONSIBLE PERSONNEL INVOLVED IN THE CONSTRUCTION PROJECT WILL HAVE A CERTIFICATE OF ATTENDANCE AT A DEPARTMENT OF THE ENVIRONMENT APPROVED TRAINING PROGRAM FOR THE CONTROL OF SEDIMENT AND EROSION BEFORE BEGINNING THE PROJECT. I ALSO AUTHORIZE PERIODIC ON-SITE INSPECTION BY THE HOWARD SOIL CONSERVATION DISTRICT.

David R. ... 5-7-01
 DEVELOPER'S SIGNATURE DATE
 DEVELOPER'S NAME

I HEREBY CERTIFY THAT THIS PLAN FOR EROSION AND SEDIMENT CONTROL REPRESENTS A PRACTICAL AND WORKABLE PLAN BASED ON MY PERSONAL KNOWLEDGE OF THE SITE CONDITIONS AND THAT IT WAS PREPARED IN ACCORDANCE WITH THE REQUIREMENTS OF THE HOWARD SOIL CONSERVATION DISTRICT.

John B. Mildenberg 5-7-01
 ENGINEER'S SIGNATURE DATE
 JOHN B. MILDENBERG, V.P.
 ENGINEER'S NAME

REVIEWED FOR HOWARD SCD AND MEETS TECHNICAL REQUIREMENTS.

Jim ... 5/29/01
 USDA NATURAL RESOURCES CONSERVATION SERVICE

THIS DEVELOPMENT PLAN IS APPROVED FOR SOIL EROSION AND SEDIMENT CONTROL BY THE SOIL CONSERVATION DISTRICT.

... 5/29/01
 HOWARD SCD

PLAN REFERENCE NUMBERS
 SP-98-12
 F-01-15

DEPARTMENT OF PUBLIC WORKS
 HOWARD COUNTY, MARYLAND

... 5-24-01
 CHIEF, BUREAU OF UTILITIES DATE

DEPARTMENT OF PLANNING & ZONING
 HOWARD COUNTY, MARYLAND

... 5/30/01
 CHIEF, DEVELOPMENT ENGINEERING DIVISION DATE

MILDENBERG, BOENDER & ASSOC., INC.
 Engineers Planners Surveyors

5072 Dorsey Hall Drive, Suite 202, Ellicott City, Maryland 21042
 (410) 987-0296 Balt. (301) 821-5521 Wash. (410) 987-0296 Fax

| | | | | | |
|--------------|----------|----|-----|----------|------|
| engineering | MMP | | | | |
| illustration | MT | | | | |
| approval | JEM | | | | |
| project | 00021 | | | | |
| date | MAY 2001 | BY | NO. | REVISION | DATE |

TITLE SHEET

600' SCALE MAP NO. 31... BLOCK NO. 3 & 4

AUTUMN VIEW, SECTION 4
 LOTS 152-210
 CONTRACT NO.: 14-3902-D
 SECOND ELECTION DISTRICT
 HOWARD COUNTY

scale AS SHOWN
1 of 5

WATER MAIN TABULATION CHART

| WHISPERING WILLOW DRIVE | | |
|-------------------------|--------------|------------|
| STATION | APPURTENANCE | O/S FROM C |
| 1+96.49 | 1/32 H.B. | LT. 13.0' |
| 2+93.28 | 8"x6" T | LT. 6.0' |
| L.P. 0+90.21 | F.H. | LT. 11.0' |
| L.P. 1+54.44 | 8" C. & B. | RT. 19.0' |

| HIDDEN HOLLOW DRIVE | | |
|---------------------|--------------|------------|
| STATION | APPURTENANCE | O/S FROM C |
| 0+8.90 | 8" V | LT. 8.3' |
| 0+14.40 | 1/32 H.B. | LT. 4.5' |

| PRACING DEER DRIVE | | |
|--------------------|------------------|------------|
| STATION | APPURTENANCE | O/S FROM C |
| 2+03.11 | 8" x8" T | LT. 6.7' |
| 2+06.21 | 8" V | LT. 3.0' |
| 2+10.64 | 1/16 H.B. | RT. 2.0' |
| 2+48.80 | 8"x6" TEE & 6" V | RT. 6.0' |
| 2+48.80 | F.H. | RT. 11.5' |

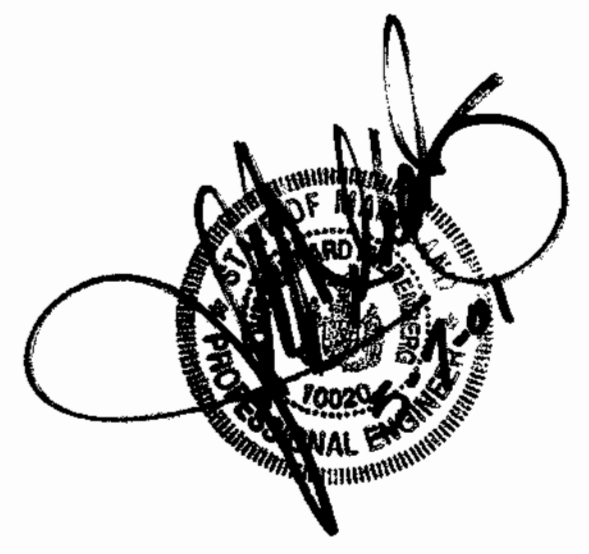
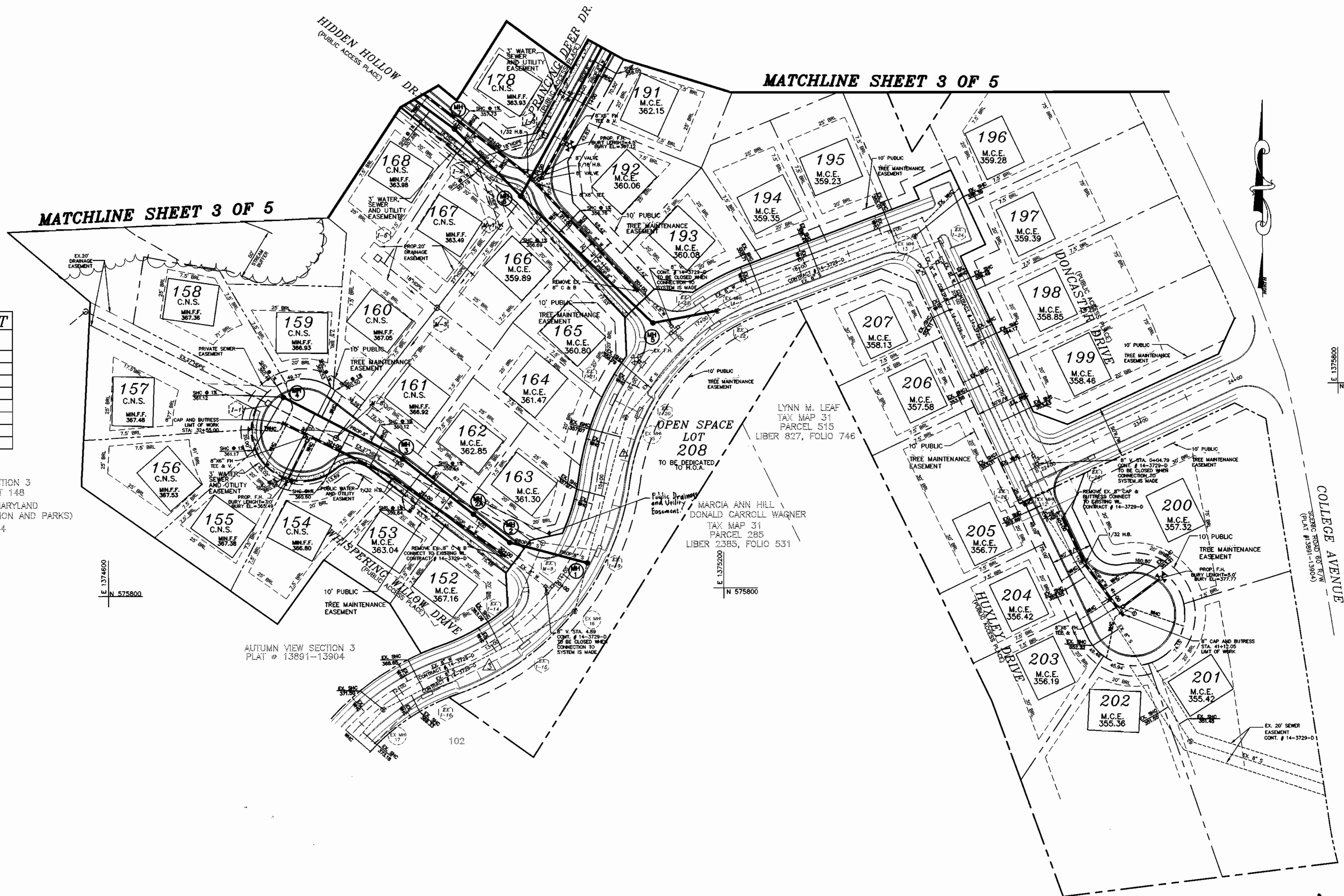
| HUXLEY DRIVE | | |
|--------------|------------------|------------|
| STATION | APPURTENANCE | O/S FROM C |
| 1+05 | 1/32 H.B. | LT. 7.0' |
| 1+57.50 | 8"x6" TEE & 6" V | LT. 1.0' |
| L.P. 0+84.17 | F.H. | LT. 4.0' |
| 1+69.20 | 8" C. & B. | RT. 5.6' |

MANHOLE LOCATION CHART

| MH # | ROAD NAME OR NORTHING & EASTING | CL STATION | OFFSET |
|------|---------------------------------|--------------|-----------|
| 1 | N 575,831.514 E 1,375,067.059 | | |
| 2 | WHISPERING WILLOW DRIVE | 0+58.90 | 6.04' RT. |
| 2A | WHISPERING WILLOW DRIVE | 1+10.91 | 6.42' RT. |
| 3 | WHISPERING WILLOW DRIVE | 1+98.62 | 7.17' RT. |
| 4 | WHISPERING WILLOW DRIVE | L.P. 1+82.12 | 3.0' RT. |
| 5 | HIDDEN HOLLOW DRIVE | 0+26.49 | 4.00' LT. |
| 6 | N 576,189.574 E 1,375,002.951 | | |
| 7 | HIDDEN HOLLOW DRIVE | 0+97.7 | 3.00' LT. |

AUTUMN VIEW SECTION 3
OPEN SPACE LOT 148
HOWARD COUNTY, MARYLAND
(DEPARTMENT OF RECREATION AND PARKS)
PLAT # 13884

AUTUMN VIEW SECTION 3
PLAT # 13881-13904



0021.DWG (MS) FINAL V0021-PLANT

DEPARTMENT OF PUBLIC WORKS
HOWARD COUNTY, MARYLAND

DEPARTMENT OF PLANNING & ZONING
HOWARD COUNTY, MARYLAND

**MILDENBERG,
BOENDER & ASSOC., INC.**
Engineers Planners Surveyors

5072 Dorsey Hall Drive, Suite 202, Ellicott City, Maryland 21042
(410) 987-0286 Dial. (301) 621-5521 Wash. (410) 987-0286 Fax

| | | | | | |
|--------------|----------|----|-----|----------|------|
| engineering | MMP | | | | |
| illustration | MT | | | | |
| approval | JBM | | | | |
| project | 00021 | | | | |
| date | MAY 2001 | BY | NO. | REVISION | DATE |

WATER AND SEWER PLAN

AUTUMN VIEW, SECTION 4
LOTS 152-210
CONTRACT NO.: 14-3902-D
SECOND ELECTION DISTRICT
HOWARD COUNTY

scale
1"=50'
2 of 5

Ruth Benin 5-24-01
CHIEF, BUREAU OF UTILITIES DATE DATE

John P. ... 5/20/01
CHIEF, DEVELOPMENT ENGINEERING DIVISION DATE

600' SCALE MAP NO. 31 BLOCK NO. 3 & 4

**WATER MAIN
TABULATION CHART**

HIDDEN HOLLOW DRIVE

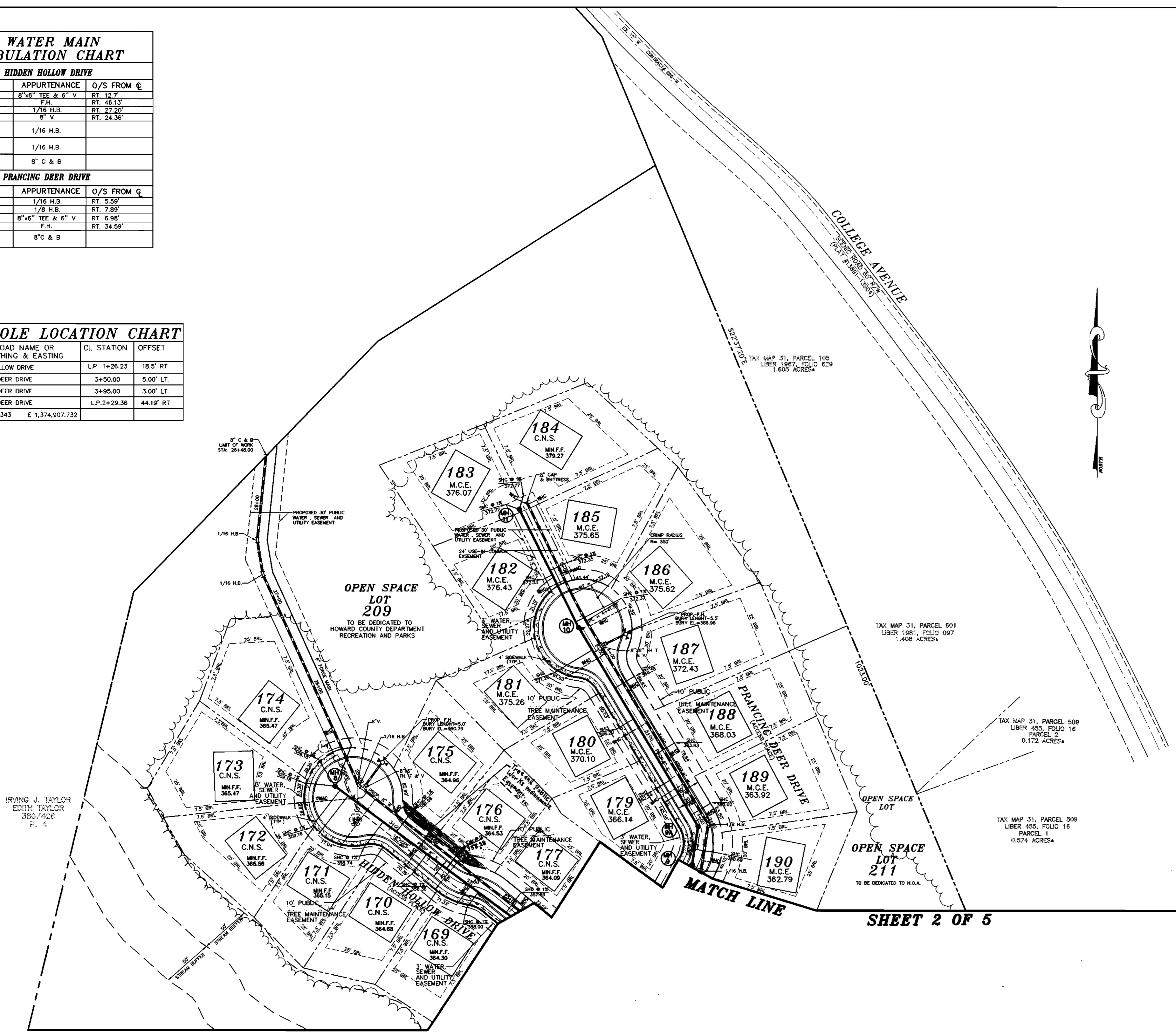
| STATION | APPURTENANCE | O/S FROM C |
|--------------------------|------------------|------------|
| 3+48.67 | 8"x6" TEE & 6" V | RT. 12.7' |
| 3+48.67 | F.H. | RT. 48.13' |
| L.P. 1+26.52 | 1/16 H.B. | RT. 22.20' |
| L.P. 1+78.48 | 8" V. | RT. 24.36' |
| N 576,631 E 1,374,648 | 1/16 H.B. | |
| N 576,666 E 1,374,642 | 1/16 H.B. | |
| N 576,724 E 1,374,648 | 8" C & B | |

PRANCING DEER DRIVE

| STATION | APPURTENANCE | O/S FROM C |
|--------------------------|------------------|------------|
| 3+49.65 | 1/16 H.B. | RT. 5.59' |
| 3+91.88 | 1/8 H.B. | RT. 7.89' |
| 6+01.40 | 8"x6" TEE & 6" V | RT. 6.98' |
| 5+99.30 | F.H. | RT. 34.59' |
| N 576,705 E 1,374,915 | 8" C & B | |

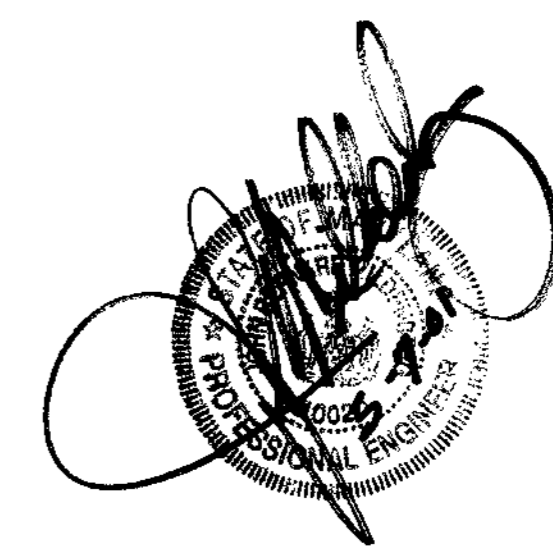
MANHOLE LOCATION CHART

| MH # | ROAD NAME OR NORTHING & EASTING | CL. STATION | OFFSET |
|------|---------------------------------|--------------|-----------|
| 8 | HIDDEN HOLLOW DRIVE | L.P. 1+26.23 | 18.5' RT |
| 9 | PRANCING DEER DRIVE | 3+50.00 | 5.00' LT. |
| 9A | PRANCING DEER DRIVE | 3+95.00 | 3.00' LT. |
| 10 | PRANCING DEER DRIVE | L.P. 2+29.36 | 44.19' RT |
| 11 | N 576,697.343 E 1,374,907.732 | | |



SHEET 2 OF 5

SHEET 2 OF 5



OWNER/DEVELOPER
 BONNIE BRANCH CORPORATION
 P.O. BOX 396
 ELLICOTT CITY, MD 21041

DEPARTMENT OF PUBLIC WORKS
 HOWARD COUNTY, MARYLAND
 IRVING J. TAYLOR
 EDITH TAYLOR
 380/426
 P. 4

DEPARTMENT OF PLANNING & ZONING
 HOWARD COUNTY, MARYLAND
 Chief, Development Engineering Division

**MILDENBERG,
 BOENDER & ASSOC., INC.**
 Engineers Planners Surveyors
 5072 Dorsey Hall Drive, Suite 202, Ellicott City, Maryland 21042
 (410) 987-0296 Fax (301) 621-5521 Wash. (410) 987-0298 Fax

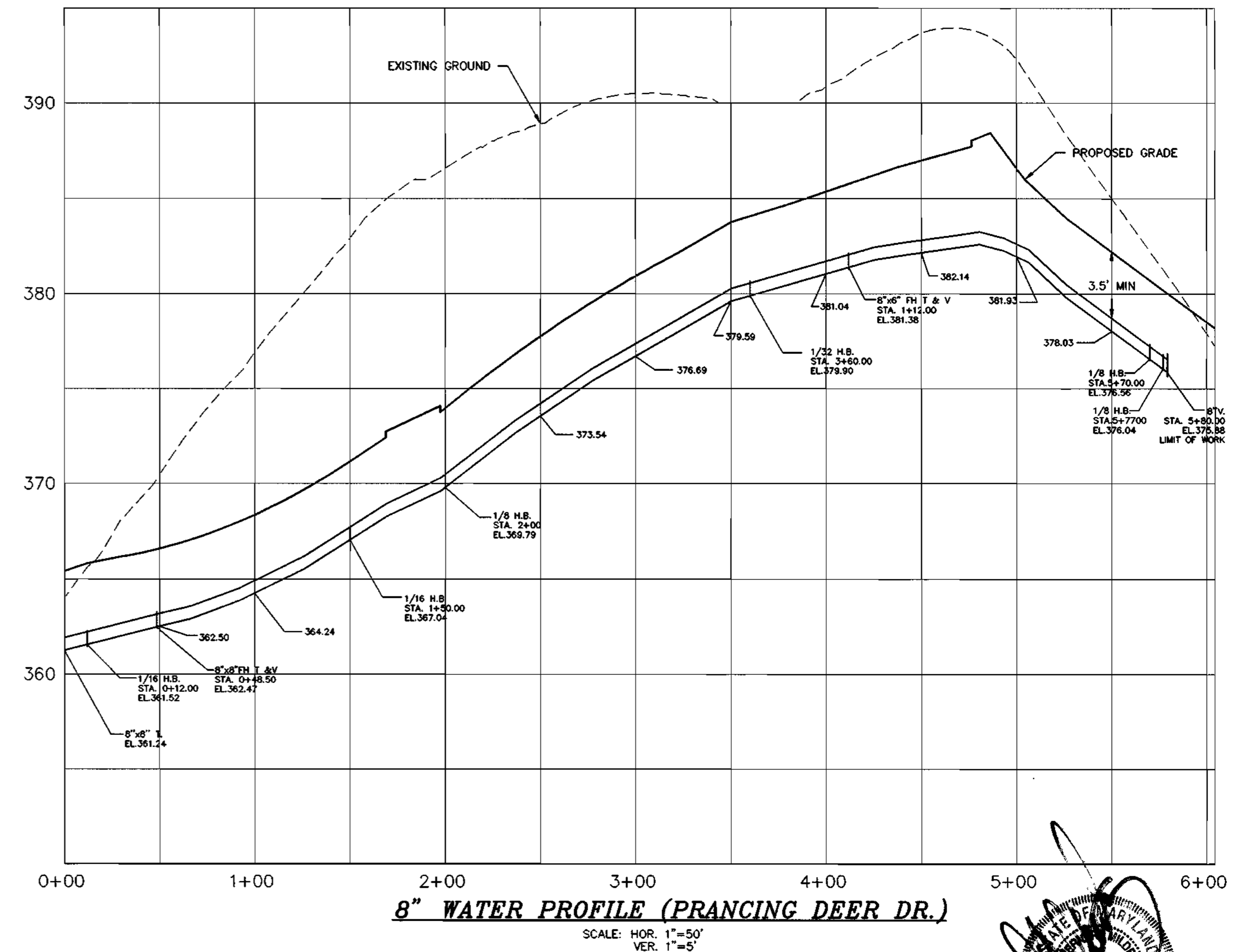
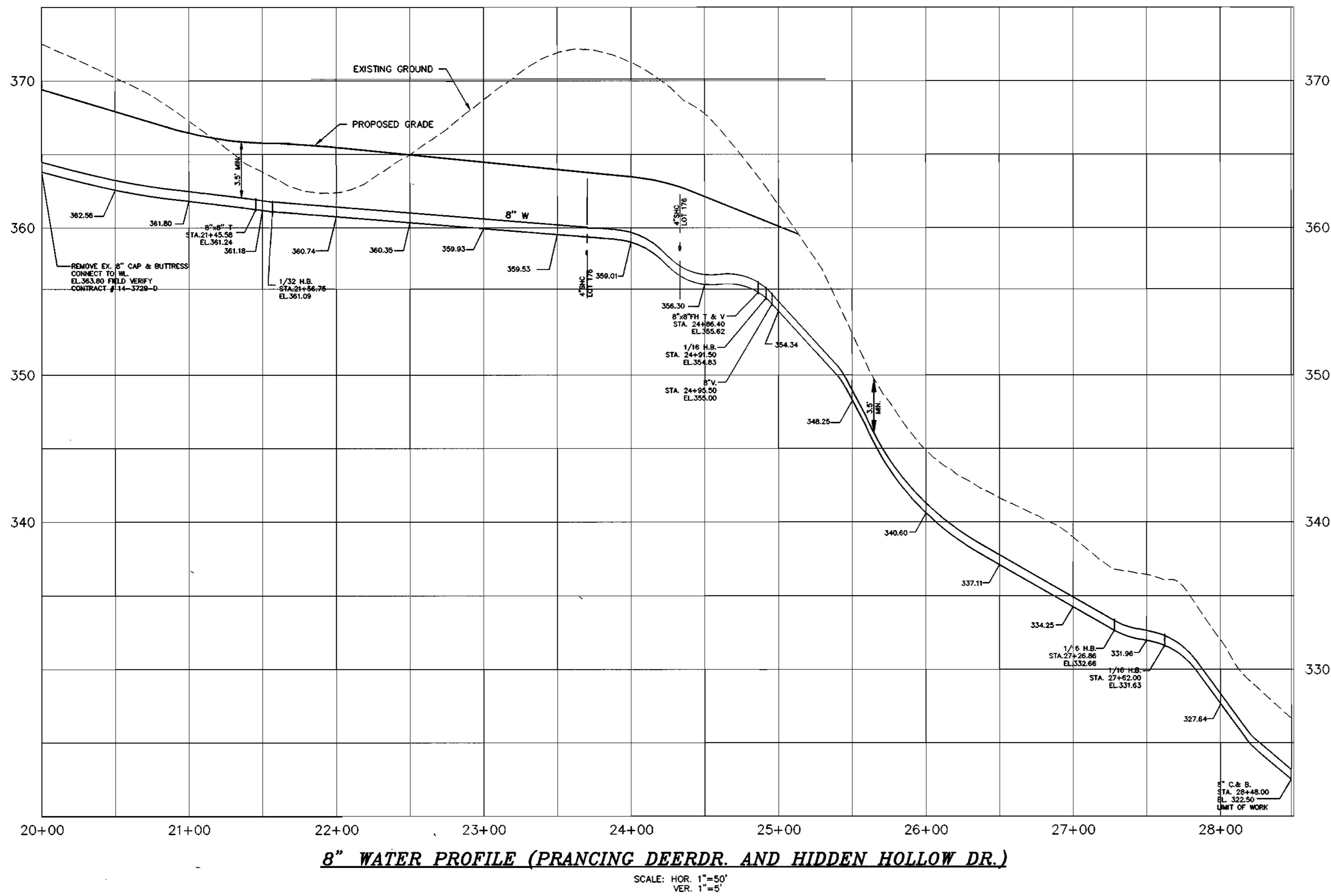
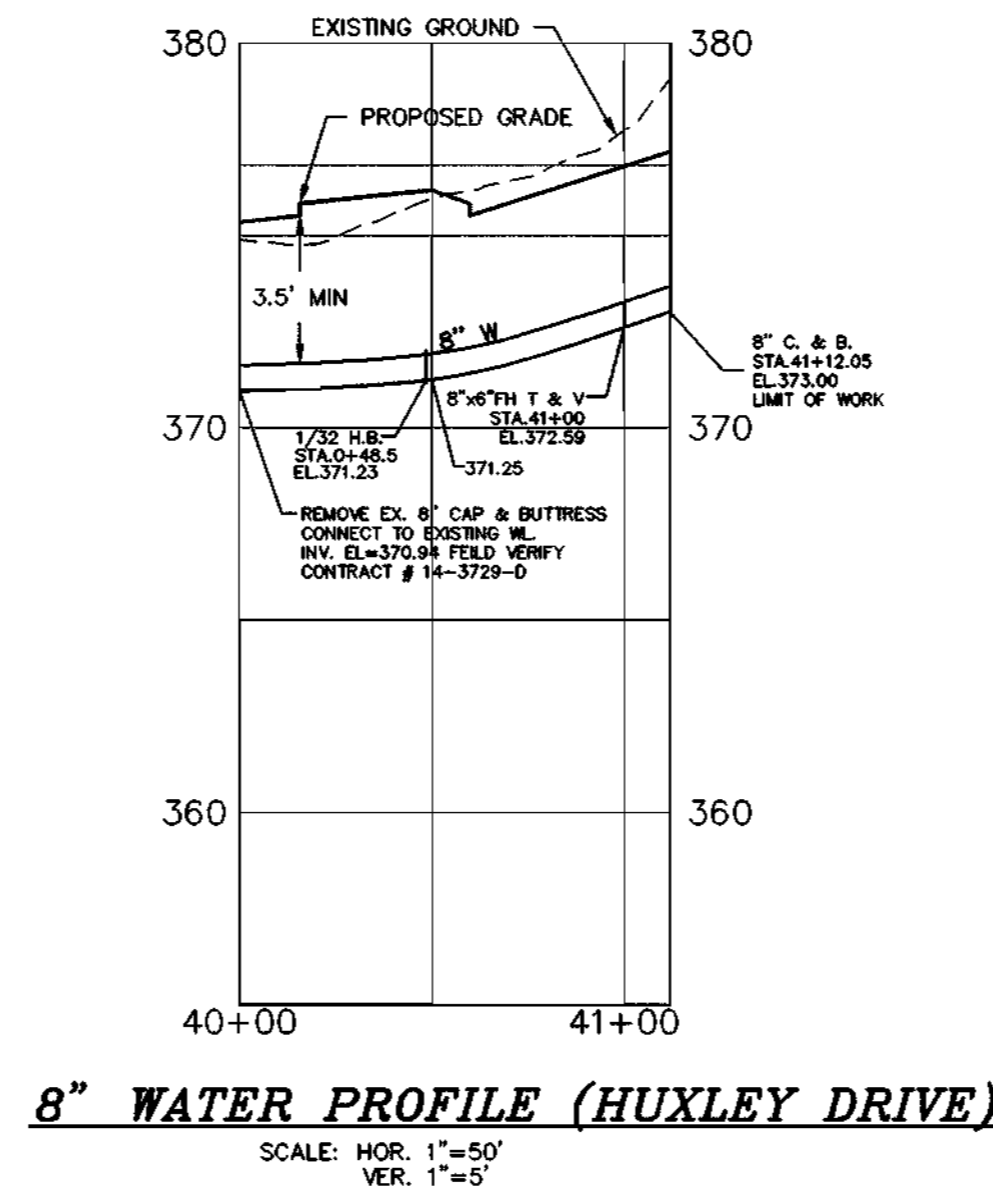
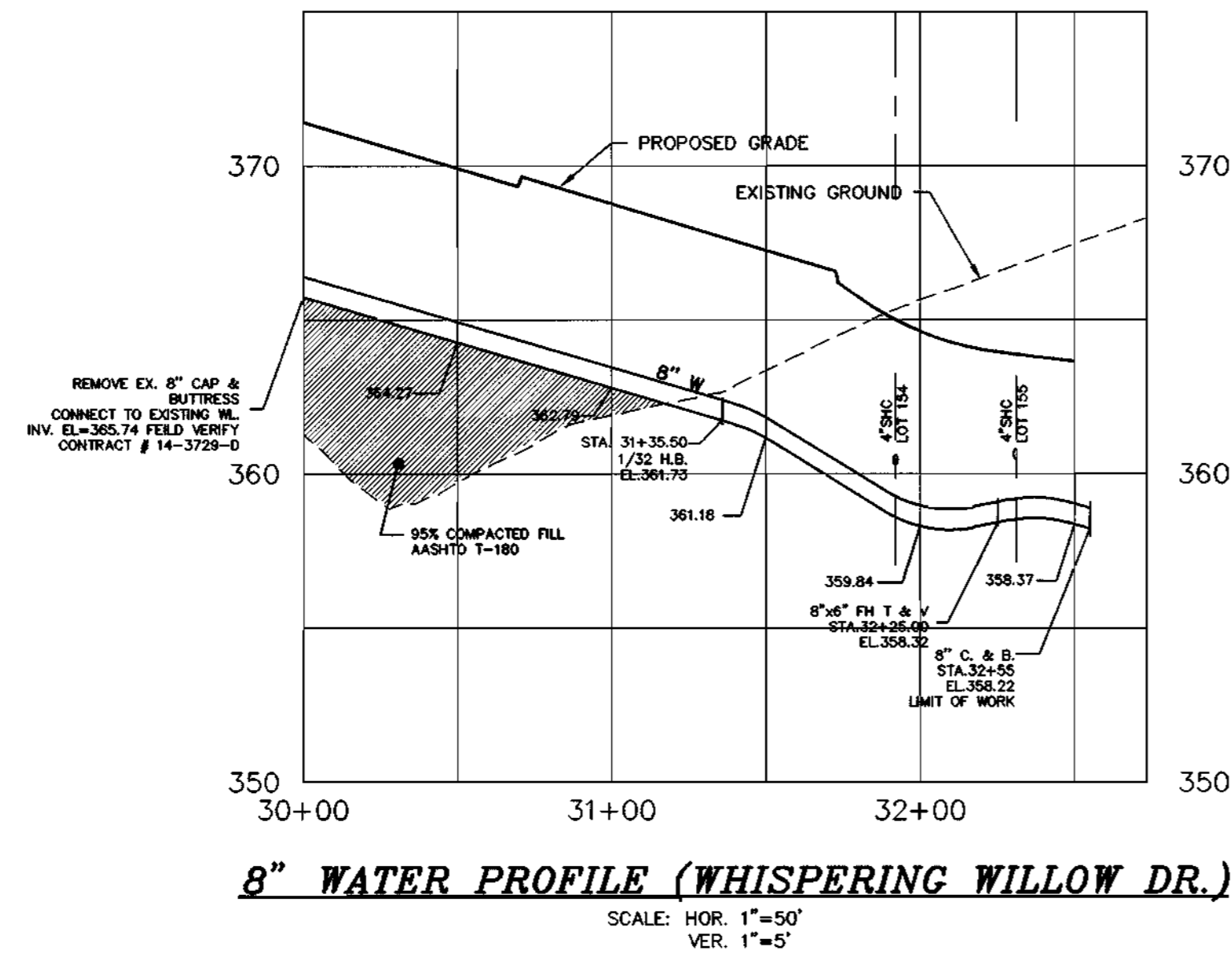
| | | | | | |
|--------------|----------|----|-----|----------|------|
| engineering | MMP | | | | |
| illustration | MT | | | | |
| approval | JBM | | | | |
| project | 00021 | | | | |
| date | MAY 2001 | BY | NO. | REVISION | DATE |

**WATER AND SEWER
 PLAN**

AUTUMN VIEW, SECTION 4
 LOTS 152-210
 CONTRACT NO.: 14-3902-D
 SECOND ELECTION DISTRICT
 HOWARD COUNTY

scale
 1"=50'
3 OF 5

0021.DWG\MS\FINAL\0021-PLAN-2



0021.DWG\MS\FINAL\0021-SP.DWG

DEPARTMENT OF PUBLIC WORKS
HOWARD COUNTY, MARYLAND
R. J. Dwyer
CHIEF, BUREAU OF UTILITIES
DATE 5-24-01

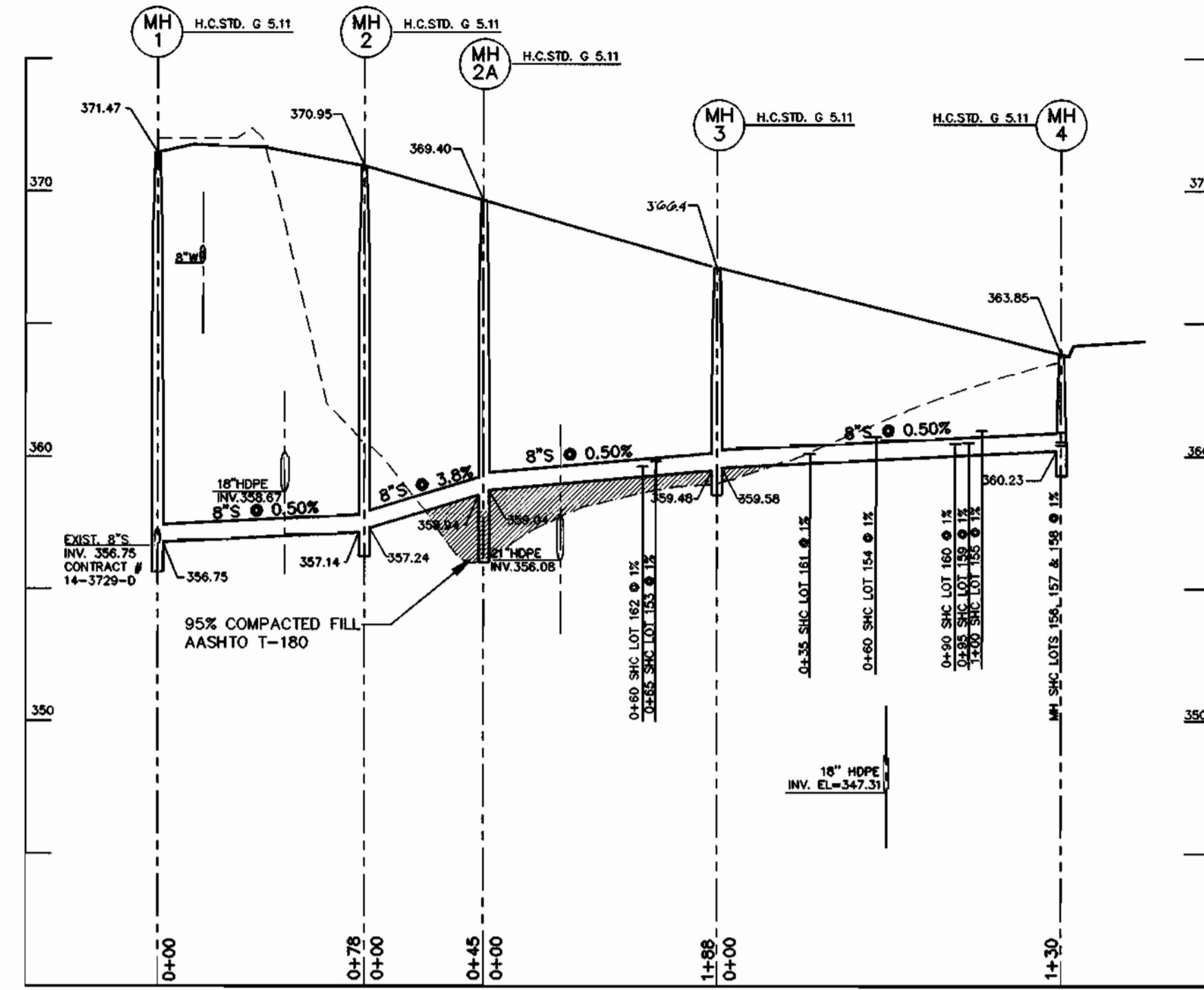
DEPARTMENT OF PLANNING & ZONING
HOWARD COUNTY, MARYLAND
[Signature]
CHIEF, DEVELOPMENT ENGINEERING DIVISION
DATE 5/20/01

MILDENBERG, BOENDER & ASSOC., INC.
Engineers Planners Surveyors
5072 Dorsey Hall Drive, Suite 202, Ellicott City, Maryland 21042
(410) 997-0296 Bulk (301) 621-5521 Wash. (410) 997-0298 Fax

| | | | | | | |
|--------------|----------|----|-----|----------|------|--|
| engineering | MMP | | | | | |
| illustration | MT | | | | | |
| approval | JBM | | | | | |
| project | 0021 | | | | | |
| date | MAY 2001 | BY | NO. | REVISION | DATE | |

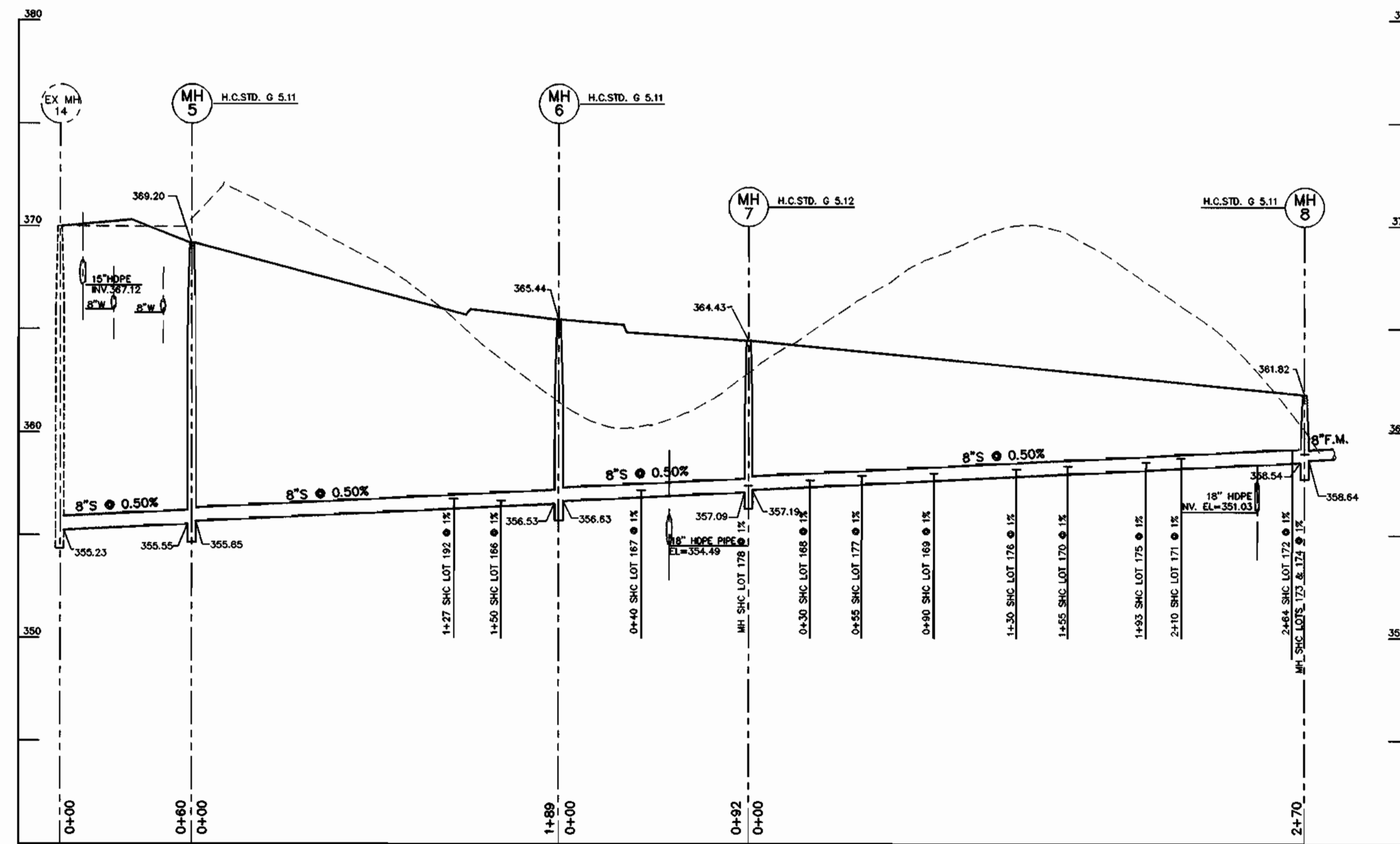
WATER PROFILES
600' SCALE MAP NO. 31 BLOCK NO. 3 & 4

AUTUMN VIEW, SECTION 4
LOTS 152-210
CONTRACT NO. 14-3902-D
SECOND ELECTION DISTRICT
HOWARD COUNTY



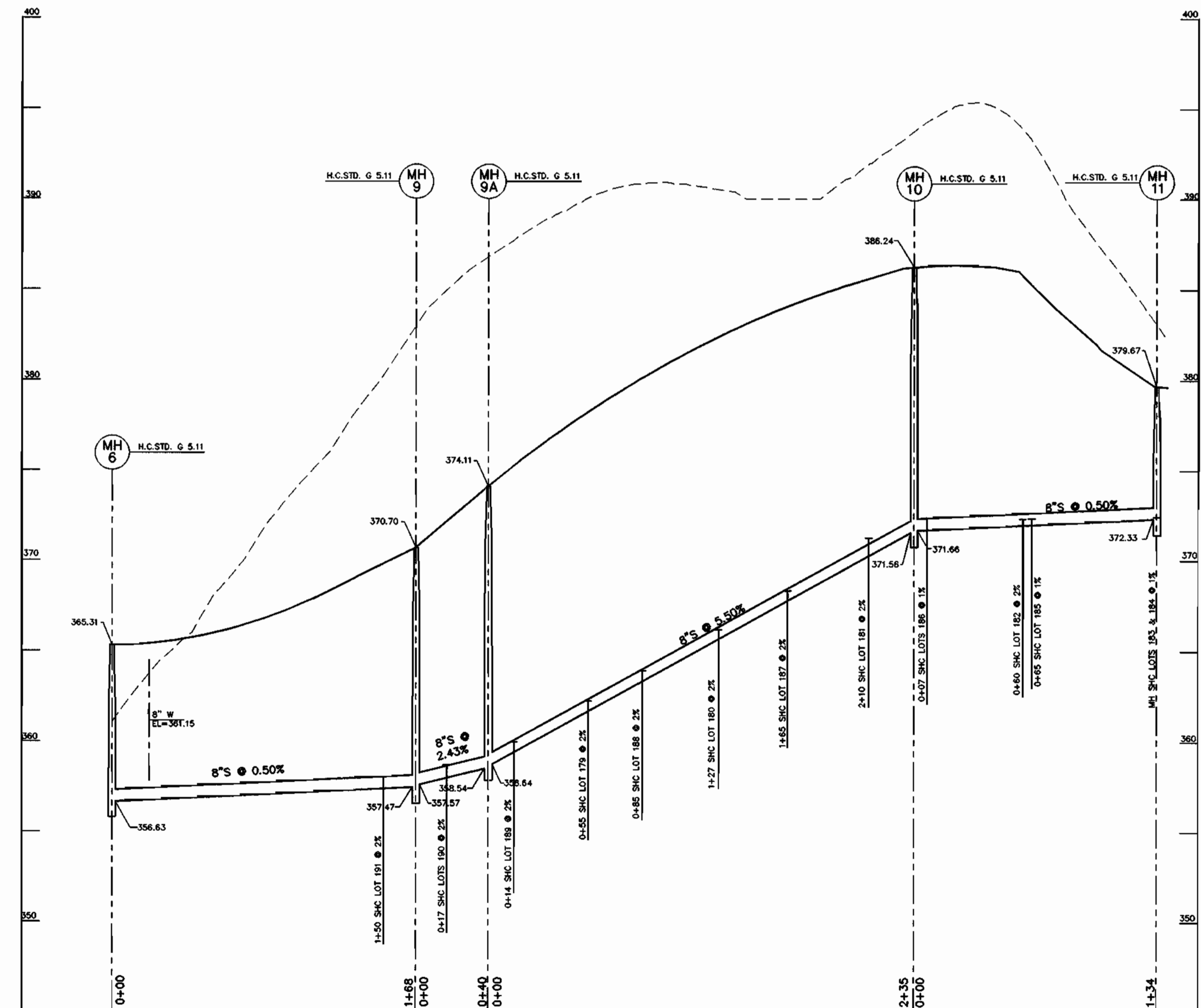
8" SEWER PROFILE

SCALE: HOR. 1"=50'
VER. 1"=5'



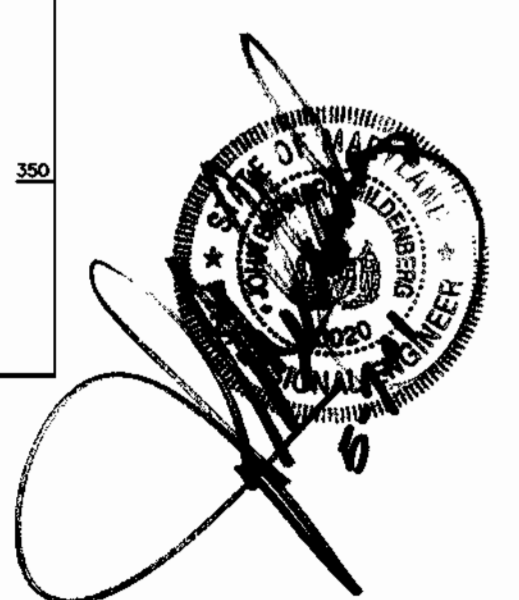
8" SEWER PROFILE

SCALE: HOR. 1"=50'
VER. 1"=5'



8" SEWER PROFILE

SCALE: HOR. 1"=50'
VER. 1"=5'



0021.DWG\MS_FINAL_V0021-SP.DWG

DEPARTMENT OF PUBLIC WORKS
HOWARD COUNTY, MARYLAND

DEPARTMENT OF PLANNING & ZONING
HOWARD COUNTY, MARYLAND

**MILDENBERG,
BOENDER & ASSOC., INC.**
Engineers Planners Surveyors

5072 Dorsey Hall Drive, Suite 202, Ellicott City, Maryland 21042
(410) 987-0286 Ball. (301) 621-5521 Wash. (410) 987-0286 Fax.

R. H. Berman 5-24-01
CHIEF, BUREAU OF UTILITIES DATE

R. H. Berman 5/24/01
CHIEF, DEVELOPMENT ENGINEERING DIVISION DATE

| | | | | | |
|--------------|----------|----|-----|----------|------|
| engineering | MMP | | | | |
| illustration | MT | | | | |
| approval | JBM | | | | |
| project | 0021 | | | | |
| date | MAY 2001 | BY | NO. | REVISION | DATE |

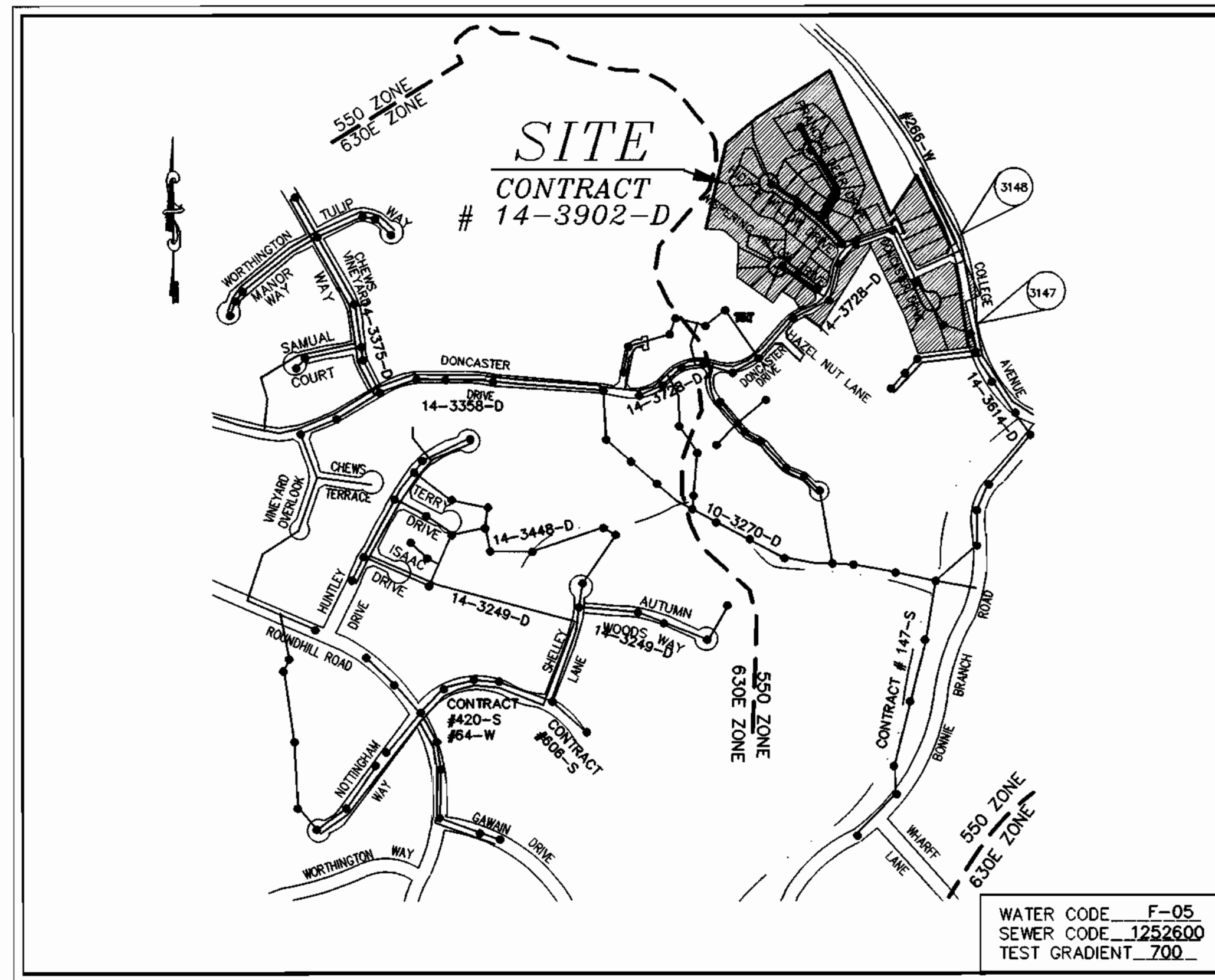
**SEWER
PROFILES**

AUTUMN VIEW, SECTION 4
LOTS 152-210
CONTRACT NO.: 14-3902-D
SECOND ELECTION DISTRICT
HOWARD COUNTY

scale

600' SCALE MAP NO. 31 BLOCK NO. 3 & 4

| QUANTITY TABLE | | | | |
|--------------------------------------------|----------------------|------------|------|-----------------------|
| ITEMS | QUANTITIES ESTIMATED | QUANTITIES | TYPE | MANUFACTURER/SUPPLIER |
| STANDARD MH | 13 | | | |
| 8" SEWER MAIN | 1,540 L.F. | | | |
| 4" SEWER HOUSE CONNECTION | 660 L.F. | | | |
| # SEWER HOUSE CONNECTION | 37 EACH | | | |
| 8" WATER | 1,655 L.F. | | | |
| 1" WATER HOUSE CONNECTION | 750 L.F. | | | |
| # 1" WHC | 37 EACH | | | |
| F.H. | 4 EACH | | | |
| 8" x 8" T | 3 EACH | | | |
| 8" x 6" T | 4 EACH | | | |
| 8" V | 3 EACH | | | |
| 6" V | 4 EACH | | | |
| 8" CAP & BUTTRESS | 2 EACH | | | |
| 1/32 H.B. (8") | 1 EACH | | | |
| 1/16 H.B. (8") | 5 EACH | | | |
| 1/8 H.B. (8") | 1 EACH | | | |
| 6" WATER | 160 L.F. | | | |
| NAME OF UTILITY CONTRACTOR: | | | | |
| SURVEY AND DRAFTING DIVISION AS-BUILT DATE | | | | |



VICINITY MAP
SCALE: 1"=600'

| | |
|--------------------------------|------------------------------------------------|
| TYPE OF BUILDING | SFD |
| No. OF UNITS | 57 |
| No. OF WATER HOUSE CONNECTION | 37 |
| No. OF SEWER HOUSE CONNECTIONS | 37 |
| DRAINAGE AREA | BONNIE BRANCH, PATAPSCO |
| TREATMENT PLANT | PATAPSCO WASTEWATER TREATMENT PLANT, BALTIMORE |

WATER CODE F-05
SEWER CODE 1252600
TEST GRADIENT .700

GENERAL NOTES

- APPROXIMATE LOCATION OF EXISTING MAINS ARE SHOWN. THE CONTRACTOR SHALL TAKE ALL NECESSARY PRECAUTIONS TO PROTECT EXISTING MAINS AND SERVICES AND MAINTAIN UNINTERRUPTED SUPPLY. ANY DAMAGE INCURRED SHALL BE REPAIRED IMMEDIATELY TO THE SATISFACTION OF THE ENGINEER AT THE CONTRACTOR'S EXPENSE.
- COORDINATES BASED ON NAD'83 MARYLAND COORDINATE SYSTEM AS PROJECTED BY HOWARD COUNTY GEODETIC CONTROL STATIONS NO. 3147 AND 3148.
STA. 3147 N575598.0794, E1375801.7684, EL=335.987
STA. 3148 N576015.4313, E1375770.4364, EL=379.248
- ALL PIPE ELEVATIONS SHOWN ARE INVERT ELEVATIONS.
- CLEAR ALL UTILITIES BY A MINIMUM OF 1'. CLEAR ALL POLES BY 2'-0" MINIMUM OR TUNNEL AS REQUIRED. THE OWNER HAS CONTACTED THE UTILITY COMPANIES AND HAS MADE ARRANGEMENTS FOR BRACING OF POLES AS SHOWN ON THE DRAWINGS. IN THE EVENT THE CONTRACTOR'S WORK REQUIRES THE BRACING OF ADDITIONAL POLES, ANY COST INCURRED BY THE OWNER FOR BRACING OF ADDITIONAL POLES OR DAMAGES SHALL BE DEDUCTED FROM MONEY OWED THE CONTRACTOR. THE CONTRACTOR SHALL COORDINATE WITH THE UTILITY COMPANIES TO SCHEDULE THE BRACING OF THE POLES.
- FOR DETAILS NOT SHOWN ON THE DRAWINGS, AND FOR MATERIALS AND CONSTRUCTION METHODS USE HOWARD COUNTY DESIGN MANUAL, VOLUME IV, STANDARD SPECIFICATIONS AND DETAIL FOR CONSTRUCTION (LATEST EDITION). THE CONTRACTOR SHALL HAVE A COPY OF VOLUME IV ON THE JOB.
- WHERE TEST PITS HAVE BEEN MADE ON EXISTING UTILITIES, THEY ARE NOTED BY THE SYMBOL AT THE LOCATION OF THE TEST PIT. A NOTE OR NOTES CONTAINING THE RESULTS OF THE TEST PIT OR PITS IS INCLUDED ON THE DRAWINGS. EXISTING UTILITIES IN THE VICINITY OF THE PROPOSED WORK FOR WHICH TEST PITS HAVE NOT BEEN DUG SHALL BE LOCATED BY THE CONTRACTOR TWO WEEKS IN ADVANCE OF CONSTRUCTION OPERATIONS AT HIS OWN EXPENSE.
- CONTRACTOR SHALL NOTIFY THE FOLLOWING UTILITY COMPANIES OR AGENCIES AT LEAST FIVE WORKING DAYS BEFORE STARTING WORK SHOWN ON THESE PLANS:
STATE HIGHWAY ADMINISTRATION (410) 531-5533
BG & E CO. CONTRACTOR SERVICES (410) 850-4620
BG & E CO. UNDERGROUND DAMAGE CONTROL (410) 787-9068
MISS UTILITY 1-800-257-7777
COLONIAL PIPELINE CO. (410) 795-1390
HOWARD COUNTY DEPARTMENT OF PUBLIC WORKS BUREAU OF UTILITIES (410) 313-4900
- TREES AND SHRUBS ARE TO BE PROTECTED FROM DAMAGE TO THE MAXIMUM EXTENT. TREES AND SHRUBS LOCATED OUTSIDE THE CONSTRUCTION STRIP ARE NOT TO BE REMOVED OR DAMAGED BY THE CONTRACTOR.
- CONTRACTOR SHALL REMOVE TREES, STUMPS AND ROOTS ALONG LINE OF EXCAVATION. PAYMENT FOR SUCH REMOVAL SHALL BE INCLUDED IN THE UNIT PRICE BID FOR CONSTRUCTION OF THE MAIN.
- THE CONTRACTOR SHALL NOTIFY THE BUREAU OF HIGHWAYS, HOWARD COUNTY, AT (410)313-2450 AT LEAST FIVE (5) WORKING DAYS BEFORE ANY OPEN CUT OF ANY COUNTY ROAD OR BORING/JACKING OPERATION IN COUNTY RIGHTS OF LAYING WATER/SEWER MAINS OR HOUSE CONNECTIONS. THE APPROVAL OF THESE DRAWINGS WILL CONSTITUTE COMPLIANCE WITH DPW REQUIREMENTS PER SECTION 18.114(o) OF HOWARD COUNTY CODE.
- ALL WATER MAINS TO BE D.I.P. CLASS 52 UNLESS OTHERWISE NOTED.
- TOPS OF ALL WATER MAINS TO HAVE A MINIMUM OF 3-1/2' COVER UNLESS OTHERWISE NOTED.
- VALVES ADJACENT TO TEES SHALL BE STRAPPED TO TEES.
- ALL FITTINGS SHALL BE BUTTRESSED OR ANCHORED WITH CONCRETE IN ACCORDANCE WITH THE STANDARD DETAILS UNLESS OTHERWISE PROVIDED FOR ON THE DRAWINGS.
- FIRE HYDRANTS SHALL BE SET TO THE BURY LINE ELEVATIONS SHOWN ON THE DRAWINGS. ALL FIRE HYDRANTS SHALL BE STRAPPED AND BUTTRESSED WITH CONCRETE IN ACCORDANCE WITH STANDARD DETAILS. SOIL AROUND THE FIRE HYDRANT SHALL BE COMPACTED IN ACCORDANCE WITH SECTION 1000 AND 1005 OF THE STANDARD SPECIFICATIONS.
- THE CONTRACTOR SHALL NOT OPERATE ANY WATER MAIN VALVES ON THE EXISTING WATER SYSTEM.
- ALL WATER HOUSE CONNECTIONS SHALL BE FOR INSIDE METER SETTING UNLESS OTHERWISE NOTED ON PLANS OR IN SPECIFICATIONS.
- FOR SPRINKLER SYSTEM FOR ALL TOWNHOMES OR MULTI-FAMILY DWELLING UNITS SHOULD HAVE A MINIMUM OF 1" CONNECTION WITH A 3/4" METER.
- ALL SEWER MAINS SHALL BE P.V.C. OR D.I.P. CLASS 52 UNLESS OTHERWISE NOTED.
- ALL MANHOLES SHALL BE 4'-0" INSIDE DIAMETER UNLESS OTHERWISE NOTED.
- MANHOLES DESIGNATED W.T. IN PLAN AND PROFILE SHALL HAVE WATERTIGHT FRAME AND COVERS, STANDARD DETAIL G5.52. WHERE WATERTIGHT MANHOLE FRAME AND COVER IS USED, SET TOP OF FRAME 1' - 6" ABOVE FINISHED GRADE UNLESS OTHERWISE NOTED ON THE DRAWINGS.
- STATIONING SHOWN IS WATER MAIN AND CENTER LINE STATIONING.
- CONTRACTOR TO VERIFY THE LOCATION OF ALL EXISTING UTILITIES PRIOR TO COMMENCING CONSTRUCTION.
- SEDIMENT CONTROL TO BE PROVIDED BY F-01-15.
- ALL SEWER HOUSE CONNECTIONS TO BE 4" IN SIZE.
- ALL WATER HOUSE CONNECTIONS TO BE 1" IN SIZE UNLESS OTHERWISE NOTED.
- ALL CELLARS WILL HAVE SERVICE TO LOWEST FLOOR UNLESS OTHERWISE NOTED.
- THE EXISTING WELL AND SEPTIC SERVICING EXISTING HOUSE(S) ARE TO BE ABANDONED.
- STORM DRAIN SYSTEM INDICATED FOR INFORMATIONAL PURPOSES ONLY, SEE ROAD PLANS FOR CONSTRUCTION DATA.
- COMPACTION IN FILL AREAS TO BE 95% AS DETERMINED PER AASHTO T-180.

EROSION AND SEDIMENT CONTROL FOR THIS CONTRACT IS PROVIDED UNDER F-01-15

CONTRACT NO.: 14-3902-D
AUTUMN VIEW, SECTION 4, LOTS 152-210
WATER AND SEWER MAIN EXTENSIONS
HOWARD COUNTY, MARYLAND
DEPARTMENT OF PUBLIC WORKS

INDEX OF DRAWINGS

| NO. | DESCRIPTION |
|-----|----------------------|
| 1 | TITLE SHEET |
| 2 | WATER AND SEWER PLAN |
| 3 | WATER AND SEWER PLAN |
| 4 | WATER PROFILES |
| 5 | SEWER PROFILES |

I/WE CERTIFY THAT ALL DEVELOPMENT AND CONSTRUCTION WILL BE DONE ACCORDING TO THIS PLAN, AND THAT ANY RESPONSIBLE PERSONNEL INVOLVED IN THE CONSTRUCTION PROJECT WILL HAVE A CERTIFICATE OF ATTENDANCE AT A DEPARTMENT OF THE ENVIRONMENT APPROVED TRAINING PROGRAM FOR THE CONTROL OF SEDIMENT AND EROSION BEFORE BEGINNING THE PROJECT. I ALSO AUTHORIZE PERIODIC/ON-SITE INSPECTION BY THE HOWARD SOIL CONSERVATION DISTRICT.

David R. Leavelle 5-7-01
DEVELOPER'S SIGNATURE DATE
DEVELOPER'S NAME

I HEREBY CERTIFY THAT THIS PLAN FOR EROSION AND SEDIMENT CONTROL REPRESENTS AN APPLICABLE AND WORKABLE PLAN BASED ON MY PERSONAL KNOWLEDGE OF THE SITE CONDITIONS AND THAT IT WAS PREPARED IN ACCORDANCE WITH THE REQUIREMENTS OF THE HOWARD SOIL CONSERVATION DISTRICT.

John B. Mildenberg 5-7-01
ENGINEER'S SIGNATURE DATE
ENGINEER'S NAME

REVIEWED FOR HOWARD SCD AND MEETS TECHNICAL REQUIREMENTS.

Jim Meyer 5/29/01
USDA NATURAL RESOURCES CONSERVATION SERVICE

THIS DEVELOPMENT PLAN IS APPROVED FOR SOIL EROSION AND SEDIMENT CONTROL BY THE SOIL CONSERVATION DISTRICT.

John S. ... 5/29/01
HOWARD SCD

PLAN REFERENCE NUMBERS
SP-98-12
F-01-15

0021\DWG\M5\FINAL\0021-COVER

| | | | | | | | |
|-------------------------------------------------------|------------------------------------------------------------|--------------------------------------------------------------------------------------------------------------------------------------------------------------------------------------------------------|--------------------------------------------------------------------------------------|------------------------------------|-------------|----------------------------------------------------------------------------------------------------------------|--------------------------|
| DEPARTMENT OF PUBLIC WORKS HOWARD COUNTY, MARYLAND | DEPARTMENT OF PLANNING & ZONING HOWARD COUNTY, MARYLAND | MILDENBERG, BOENDER & ASSOC., INC. Engineers Planners Surveyors 5072 Dorsey Hall Drive, Suite 202, Ellicott City, Maryland 21042 (410) 997-0296 Dall. (301) 621-5521 Wash. (410) 997-0296 Fax | engineering MMP illustration MT approval JBM project 00021 date MAY 2001 | MBA 1 2/6/02 BY NO. REVISION | TITLE SHEET | AUTUMN VIEW, SECTION 4 LOTS 152-210 CONTRACT NO.: 14-3902-D SECOND ELECTION DISTRICT HOWARD COUNTY | scale AS SHOWN 1 OF 5 |
|-------------------------------------------------------|------------------------------------------------------------|--------------------------------------------------------------------------------------------------------------------------------------------------------------------------------------------------------|--------------------------------------------------------------------------------------|------------------------------------|-------------|----------------------------------------------------------------------------------------------------------------|--------------------------|

**WATER MAIN
TABULATION CHART**

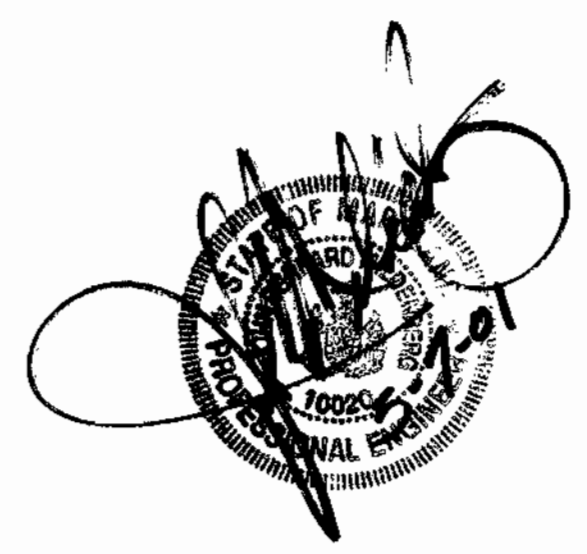
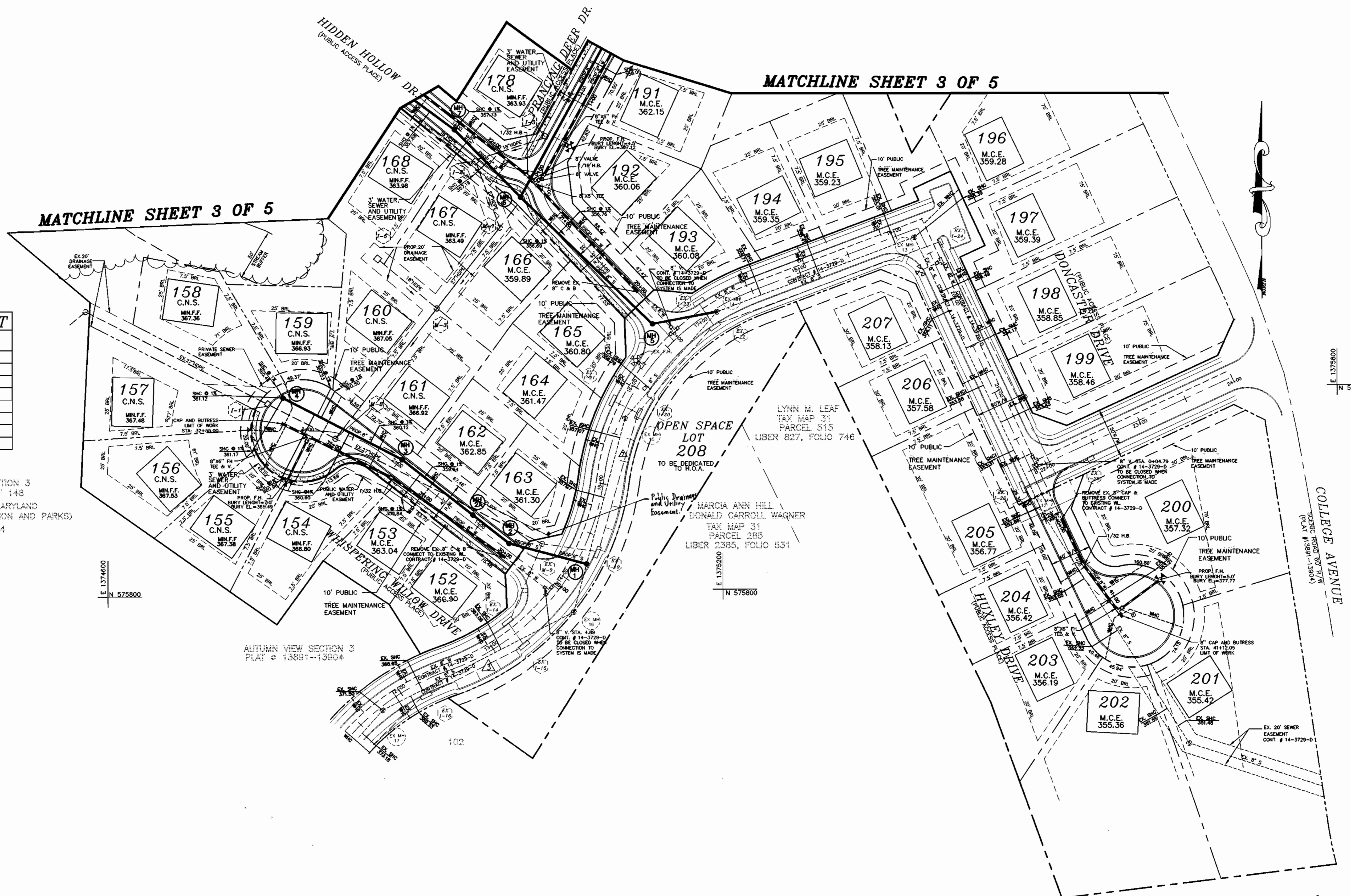
| WHISPERING WILLOW DRIVE | | |
|-------------------------|--------------------|------------|
| STATION | APPURTENANCE | O/S FROM C |
| 1+96.49 | 1/32 H.B. | LT. 13.0' |
| 2+93.28 | 8" x 6" T | LT. 6.0' |
| L.P. 0+90.21 | F.H. | LT. 11.0' |
| L.P. 1+54.44 | 8" C. & B. | RT. 19.0' |
| HIDDEN HOLLOW DRIVE | | |
| STATION | APPURTENANCE | O/S FROM C |
| 0+8.90 | 8" V | LT. 8.3' |
| 0+14.40 | 1/32 H.B. | LT. 4.5' |
| PRACING DEER DRIVE | | |
| STATION | APPURTENANCE | O/S FROM C |
| 2+03.11 | 8" x 8" T | LT. 6.7' |
| 2+06.21 | 8" V | LT. 3.0' |
| 2+10.64 | 1/16 H.B. | RT. 2.0' |
| 2+48.80 | 8" x 6" TEE & 6" V | RT. 6.0' |
| 2+48.80 | F.H. | RT. 11.5' |
| HUXLEY DRIVE | | |
| STATION | APPURTENANCE | O/S FROM C |
| 1+05 | 1/32 H.B. | LT. 7.0' |
| 1+57.50 | 8" x 6" TEE & 6" V | LT. 1.0' |
| L.P. 0+84.17 | F.H. | LT. 4.0' |
| 1+69.20 | 8" C. & B. | RT. 5.6' |

MANHOLE LOCATION CHART

| MH # | ROAD NAME OR NORTHING & EASTING | CL STATION | OFFSET |
|------|---------------------------------|--------------|-----------|
| 1 | N 575,831.514 E 1,375,067.059 | | |
| 2 | WHISPERING WILLOW DRIVE | 0+58.90 | 6.0' RT. |
| 2A | WHISPERING WILLOW DRIVE | 1+10.91 | 6.42' RT. |
| 3 | WHISPERING WILLOW DRIVE | 1+98.62 | 7.17' RT. |
| 4 | WHISPERING WILLOW DRIVE | L.P. 1+82.12 | 3.0' RT. |
| 5 | HIDDEN HOLLOW DRIVE | 0+26.49 | 4.00' LT. |
| 6 | N 576,189.574 E 1,375,002.951 | | |
| 7 | HIDDEN HOLLOW DRIVE | 0+97.7 | 3.00' LT. |

AUTUMN VIEW SECTION 3
OPEN SPACE LOT 148
HOWARD COUNTY, MARYLAND
(DEPARTMENT OF RECREATION AND PARKS)
PLAT # 13894

AUTUMN VIEW SECTION 3
PLAT # 13891-13904



0021.DWG(VS) FINAL V0021-FLA1

| | | | | | | | |
|-------------------------------------------------------------------------------------------------------------------------------------|-------------------------------------------------------------------------------------------------------------------------------------------------------|------------------------------------------------------------------------------------------------------------------------------------------------------------------------------------------------------------------------|-------------------------------------------------------------------------------------------|------------------------------------------------------|------------------------------------------------------------------------------|-----------------------------------------------------------------------------------------------------------------------|-------------------------------|
| DEPARTMENT OF PUBLIC WORKS HOWARD COUNTY, MARYLAND <i>Robert J. Miller</i> CHIEF, BUREAU OF UTILITIES DATE: 5-24-01 | DEPARTMENT OF PLANNING & ZONING HOWARD COUNTY, MARYLAND <i>Robert J. Miller</i> CHIEF, DEVELOPMENT ENGINEERING DIVISION DATE: 5/20/01 | MILDENBERG, BOENDER & ASSOC., INC. Engineers Planners Surveyors 5072 Dorsey Hall Drive, Suite 202, Ellicott City, Maryland 21042 (410) 867-0286 Balt. (301) 621-5521 Wash. (410) 997-0288 Pac. | engineering: MMP illustration: MT approval: JBM project: 00021 date: MAY 2001 | REVISION 1. REVISE LOT 152 M.C.E. BY: NO. DATE | WATER AND SEWER PLAN 600' SCALE MAP NO. 31 BLOCK NO. 3 & 4 | AUTUMN VIEW, SECTION 4 LOTS 152-210 CONTRACT NO.: 14-3902-D SECOND ELECTION DISTRICT HOWARD COUNTY | scale 1"=50' 2 OF 5 |
|-------------------------------------------------------------------------------------------------------------------------------------|-------------------------------------------------------------------------------------------------------------------------------------------------------|------------------------------------------------------------------------------------------------------------------------------------------------------------------------------------------------------------------------|-------------------------------------------------------------------------------------------|------------------------------------------------------|------------------------------------------------------------------------------|-----------------------------------------------------------------------------------------------------------------------|-------------------------------|

**WATER MAIN
TABULATION CHART**

HIDDEN HOLLOW DRIVE

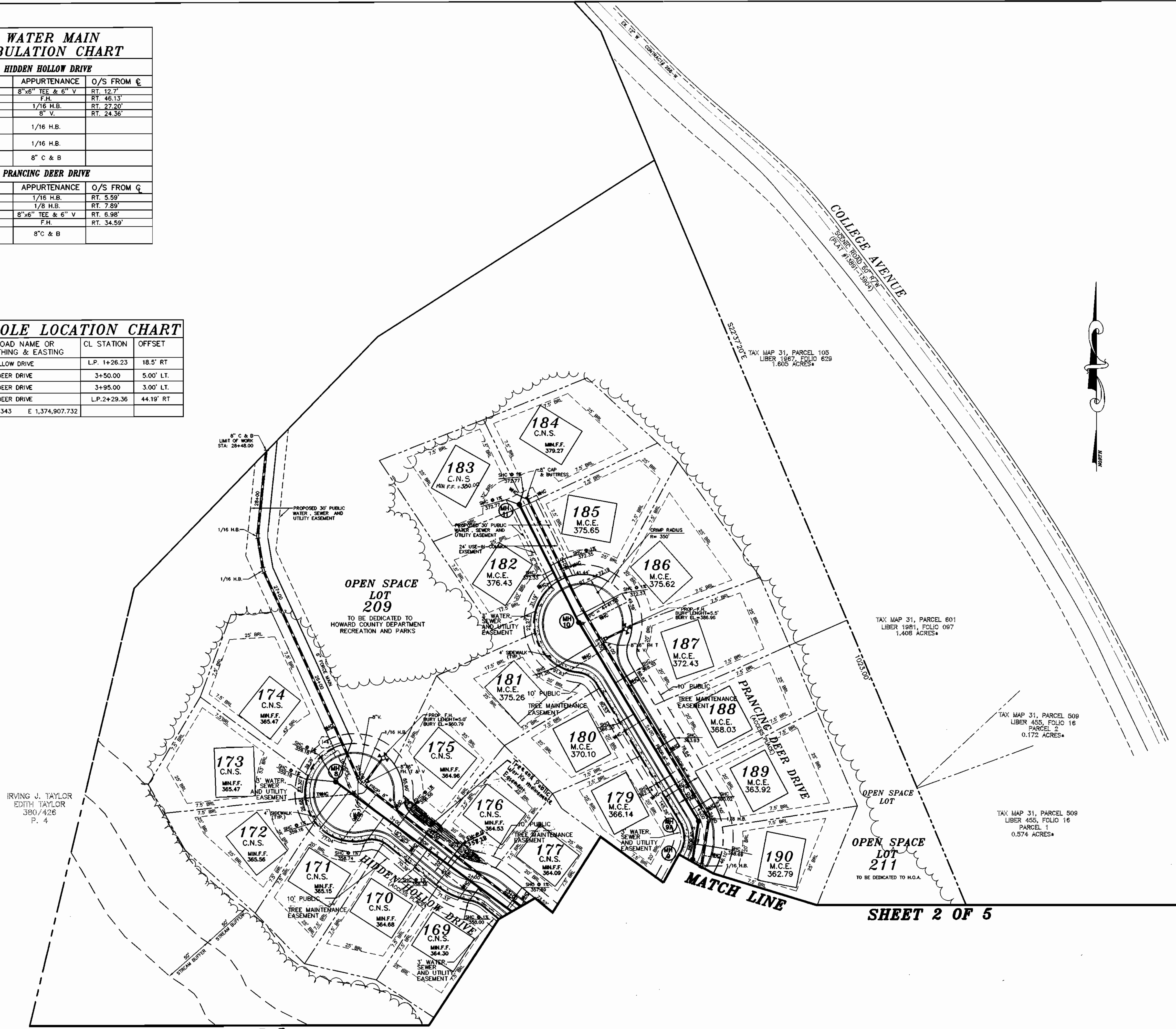
| STATION | APPURTENANCE | O/S FROM C |
|--------------|------------------|------------|
| 3+46.67 | 8"x6" TEE & 6" V | RT. 12.7' |
| 3+46.67 | F.H. | RT. 46.13' |
| L.P. 1+86.52 | 1/16 H.B. | RT. 22.20' |
| L.P. 1+78.45 | 8" V. | RT. 24.56' |
| N 576,631 | 1/16 H.B. | |
| E 1,374,648 | | |
| N 576,666 | 1/16 H.B. | |
| E 1,374,642 | | |
| N 576,724 | 8" C & B | |
| E 1,374,648 | | |

PRANCING DEER DRIVE

| STATION | APPURTENANCE | O/S FROM C |
|-------------|------------------|------------|
| 3+49.65 | 1/16 H.B. | RT. 5.59' |
| 3+91.88 | 1/8 H.B. | RT. 7.89' |
| 6+01.40 | 8"x6" TEE & 6" V | RT. 6.98' |
| 5+99.30 | F.H. | RT. 34.59' |
| N 576,705 | 8" C & B | |
| E 1,374,915 | | |

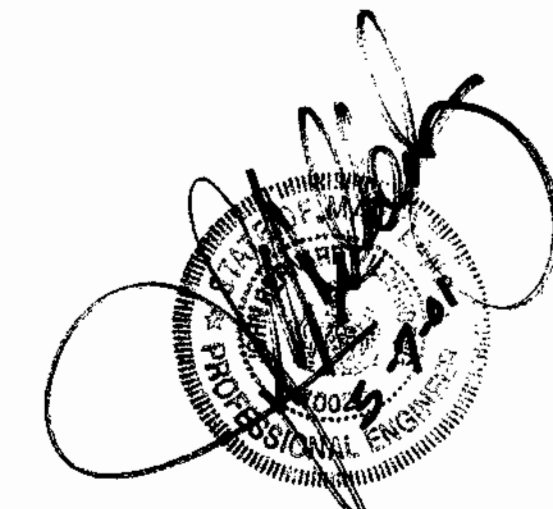
MANHOLE LOCATION CHART

| MH # | ROAD NAME OR NORTHING & EASTING | CL. STATION | OFFSET |
|------|---------------------------------|--------------|-----------|
| 8 | HIDDEN HOLLOW DRIVE | L.P. 1+26.23 | 18.5' RT |
| 9 | PRANCING DEER DRIVE | 3+50.00 | 5.00' LT. |
| 9A | PRANCING DEER DRIVE | 3+95.00 | 3.00' LT. |
| 10 | PRANCING DEER DRIVE | L.P. 2+29.36 | 44.19' RT |
| 11 | N 576,697.343 E 1,374,907.732 | | |



SHEET 2 OF 5

SHEET 2 OF 5



DEPARTMENT OF PUBLIC WORKS
HOWARD COUNTY, MARYLAND

Robert J. Boender
5-24-01
CHIEF, BUREAU OF UTILITIES

DEPARTMENT OF PLANNING & ZONING
HOWARD COUNTY, MARYLAND

Robert J. Boender
5/24/01
CHIEF, DEVELOPMENT ENGINEERING DIVISION

**MILDENBERG,
BOENDER & ASSOC., INC.**
Engineers Planners Surveyors
5972 Dorsey Hall Drive, Suite 202, Ellicott City, Maryland 21042
(410) 997-0296 Fax: (410) 997-0296

| | | | | | |
|--------------|----------|----|-----|--|--|
| engineering | MMP | | | | |
| illustration | MT | | | | |
| approval | JBM | | | | |
| project | 00021 | | | | |
| date | MAY 2001 | BY | NO. | | |

REVISION: REVISE LOT 103 TO C.N.S.

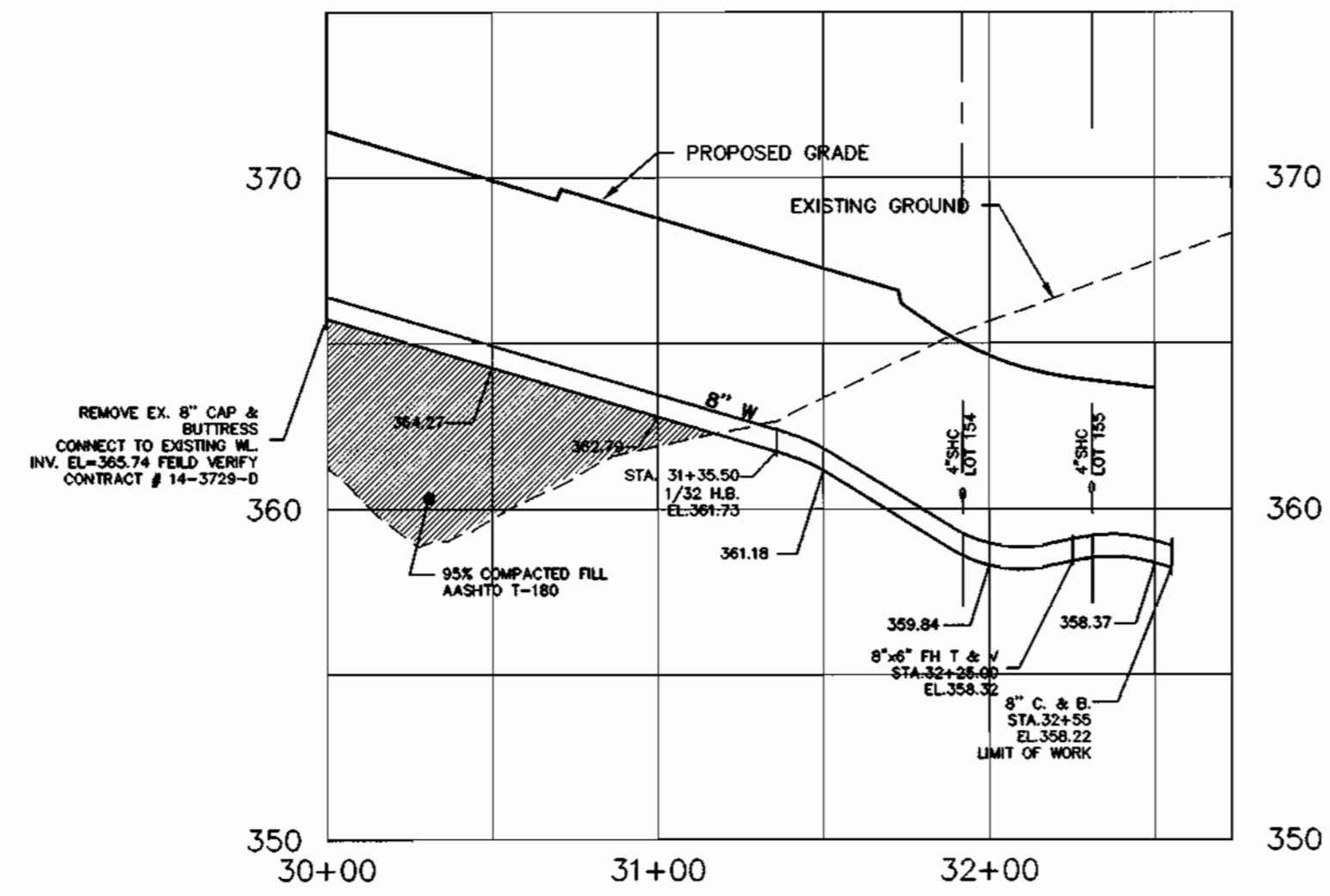
**WATER AND SEWER
PLAN**

600' SCALE MAP NO. 31 BLOCK NO. 34

AUTUMN VIEW, SECTION 4
LOTS 152-210
CONTRACT NO.: 14-3902-D
SECOND ELECTION DISTRICT
HOWARD COUNTY

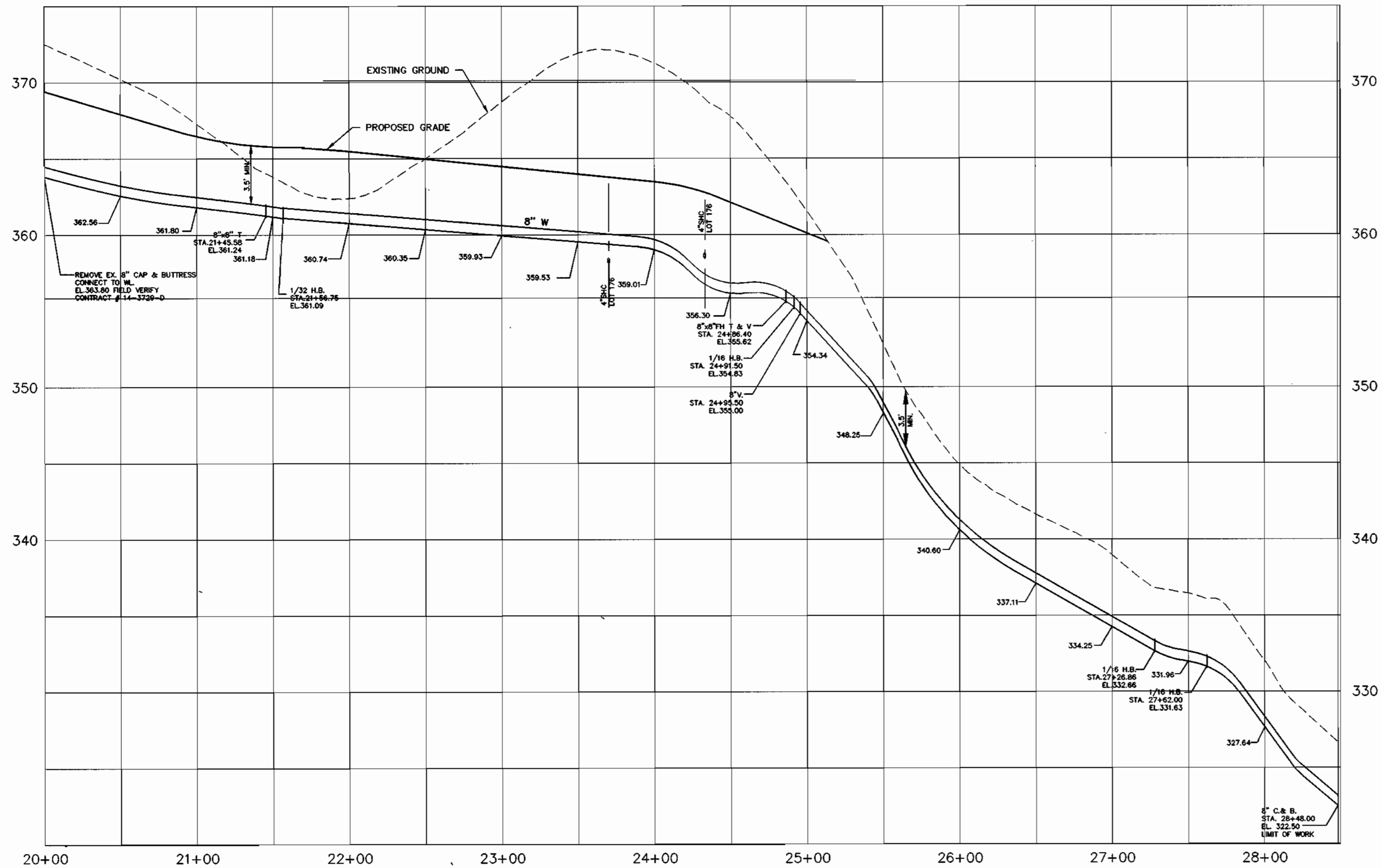
scale
1"=50'
3 OF 5

0021.DWG\MS\FINAL\0021-PLAN-2



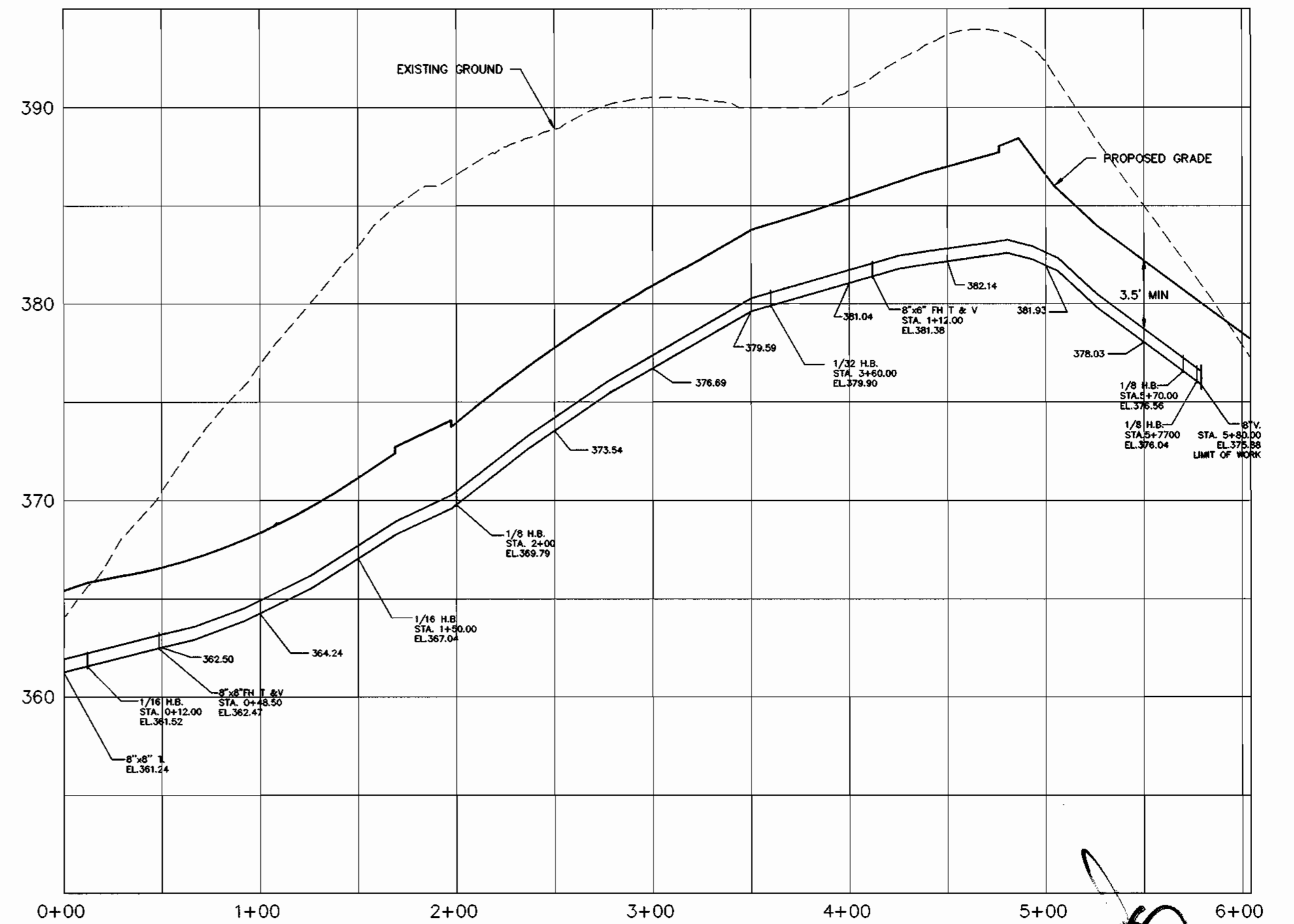
8" WATER PROFILE (WHISPERING WILLOW DR.)

SCALE: HOR. 1"=50'
VER. 1"=5'



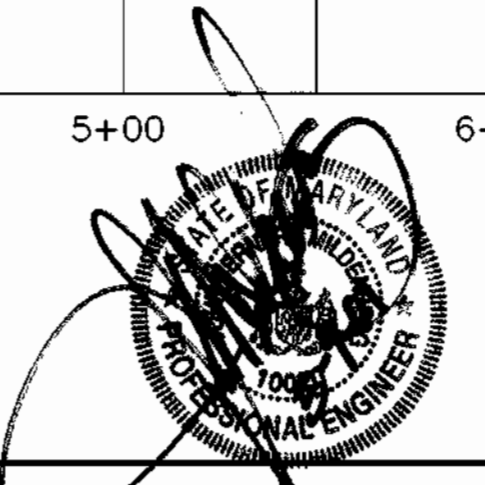
8" WATER PROFILE (PRANCING DEER DR. AND HIDDEN HOLLOW DR.)

SCALE: HOR. 1"=50'
VER. 1"=5'



8" WATER PROFILE (PRANCING DEER DR.)

SCALE: HOR. 1"=50'
VER. 1"=5'



0021.DWG\MS\FINAL\0021-SP.DWG

| | | | | | | | | | |
|--------------------------------------------------------------------------------------------------------------------|---------------------------------------------------------------------------------------------------------------------------------------|-----------------------------------------------------------------------------------------------------------------------------------------------------------------------------------------------------------------------|-----------------|--|--|--|---------------------------|-----------------------------------------------------------------------------------------------------------------------|----------------------------|
| DEPARTMENT OF PUBLIC WORKS HOWARD COUNTY, MARYLAND <i>Robert J. Berman</i> CHIEF, BUREAU OF UTILITIES | DEPARTMENT OF PLANNING & ZONING HOWARD COUNTY, MARYLAND <i>Michael J. Berman</i> CHIEF, DEVELOPMENT ENGINEERING DIVISION | MILDENBERG, BOENDER & ASSOC., INC. Engineers Planners Surveyors 5072 Dorsey Hill Drive, Suite 202, Ellicott City, Maryland 21042 (410) 897-0296 Bult. (301) 621-6521 Wash. (410) 997-0296 Fax | engineering MMP | | | | WATER PROFILES | AUTUMN VIEW, SECTION 4 LOTS 152-210 CONTRACT NO.: 14-3902-D SECOND ELECTION DISTRICT HOWARD COUNTY | scale 4 of 5 |
| | | | illustration MT | | | | | | |

WATER MAIN TABULATION CHART

WHISPERING WILLOW DRIVE

| STATION | APPURTENANCE | O/S FROM C |
|--------------|--------------|------------|
| 1+96.49 | 1/32 H.B. | LT. 13.0' |
| 2+93.28 | 8"x6" T | LT. 6.0' |
| L.P. 0+90.21 | F.H. | LT. 11.0' |
| L.P. 1+54.44 | 8"C & B | RT. 19.0' |

HIDDEN HOLLOW DRIVE

| STATION | APPURTENANCE | O/S FROM C |
|---------|--------------|------------|
| 0+8.90 | 8" V | LT. 8.3' |
| 0+14.40 | 1/32 H.B. | LT. 4.5' |

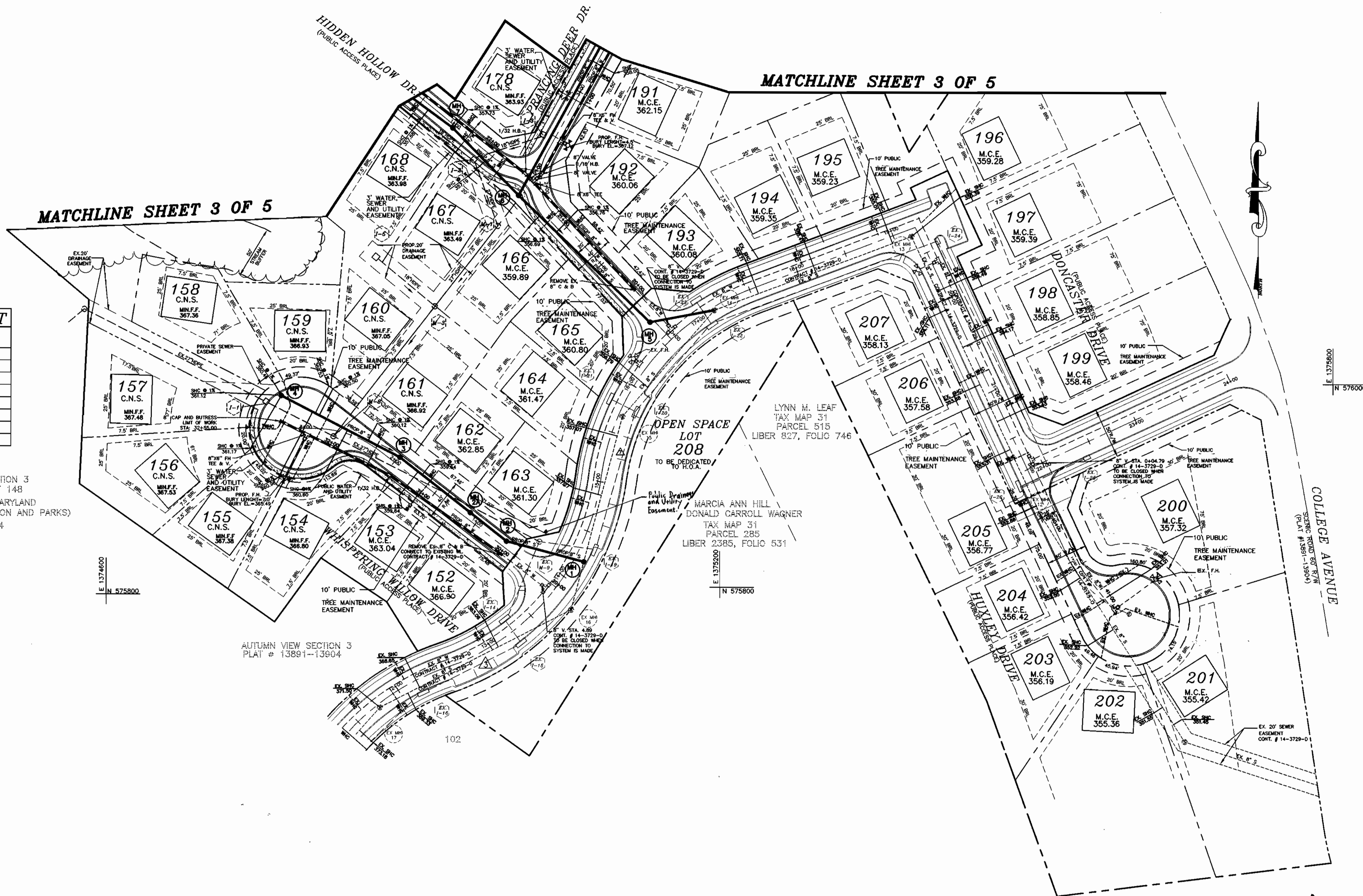
PRACING DEER DRIVE

| STATION | APPURTENANCE | O/S FROM C |
|---------|------------------|------------|
| 2+03.11 | 8" x8" T | LT. 6.7' |
| 2+06.21 | 8" V | LT. 3.0' |
| 2+10.64 | 1/16 H.B. | RT. 2.0' |
| 2+48.80 | 8"x6" TEE & 6" V | RT. 6.0' |
| 2+48.80 | F.H. | RT. 11.5' |

MANHOLE LOCATION CHART

| MH # | ROAD NAME OR NORTHING & EASTING | CL. STATION | OFFSET |
|------|---------------------------------|--------------|-----------|
| 1 | N 575,831.514 E 1,375,067.059 | | |
| 2 | WHISPERING WILLOW DRIVE | 0+58.90 | 6.04' RT. |
| 2A | WHISPERING WILLOW DRIVE | 1+10.91 | 6.42' RT. |
| 3 | WHISPERING WILLOW DRIVE | 1+98.62 | 7.17' RT. |
| 4 | WHISPERING WILLOW DRIVE | L.P. 1+82.12 | 3.0' RT. |
| 5 | HIDDEN HOLLOW DRIVE | 0+26.49 | 4.00' LT. |
| 6 | N 576,189.574 E 1,375,002.951 | | |
| 7 | HIDDEN HOLLOW DRIVE | 0+97.7 | 3.00' LT. |

AUTUMN VIEW SECTION 3
 OPEN SPACE LOT 148
 HOWARD COUNTY, MARYLAND
 (DEPARTMENT OF RECREATION AND PARKS)
 PLAT # 13894



00211.DWG.VIS.FINAL.V0021-PLANT

DEPARTMENT OF PUBLIC WORKS
 HOWARD COUNTY, MARYLAND
 Chief, Bureau of Utilities
 Date: 5-24-01

DEPARTMENT OF PLANNING & ZONING
 HOWARD COUNTY, MARYLAND
 Chief, Development Engineering Division
 Date: 5/20/01

MILDENBERG, BOENDER & ASSOC., INC.
 Engineers Planners Surveyors
 5072 Dorsey Hall Drive, Suite 202, Ellicott City, Maryland 21042
 (410) 997-0296 Fax (301) 521-5521 Wash (410) 997-0298 Fax

| | | | | | |
|--------------|-----|-----|-------------------------------------|---------|--|
| engineering | MMP | | | | |
| illustration | MT | | | | |
| approval | JBM | | | | |
| project | MBA | 2 | REMOVE WATER MAIN FROM HUXLEY DRIVE | 2/6/02 | |
| date | MBA | 1 | REVISE LOT 152 M.C.E. | 1/11/01 | |
| | BY | NO. | REVISION | DATE | |
| | | | | | |

WATER AND SEWER PLAN

AUTUMN VIEW, SECTION 4
 LOTS 152-210
 CONTRACT NO.: 14-3902-D
 SECOND ELECTION DISTRICT
 HOWARD COUNTY

scale
 1"=50'
 2 of 5

