

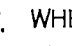
VILLAGE OF RIVER HILL

WATER & SEWER MAIN EXTENSION

SECTION 4 • AREA 1 • LOT A-4

GENERAL NOTES

PART I - GENERAL

- APPROXIMATE LOCATION OF EXISTING MAINS ARE SHOWN. THE CONTRACTOR SHALL TAKE ALL NECESSARY PRECAUTIONS TO PROTECT EXISTING MAINS AND SERVICES AND MAINTAIN UNINTERRUPTED SUPPLY. ANY DAMAGE INCURRED SHALL BE REPAIRED IMMEDIATELY TO THE SATISFACTION OF THE ENGINEER AT THE CONTRACTOR'S EXPENSE.
- ALL HORIZONTAL CONTROLS ARE BASED ON MARYLAND STATE COORDINATES (NAD '83).
- ALL VERTICAL CONTROLS ARE BASED ON U.S.G.S. DATA.
- ALL PIPE ELEVATIONS SHOWN ARE INVERT ELEVATIONS.
- CLEAR ALL UTILITIES BY A MINIMUM OF 6'. CLEAR ALL POLES BY 2'-0" MIN. OR TUNNEL AS REQUIRED. THE OWNER HAS CONTACTED UTILITY COMPANIES AND MADE ARRANGEMENTS FOR BRACING OF POLES AS SHOWN ON DRAWINGS. IN EVENT THE CONTRACTOR'S WORK REQUIRES THE BRACING OF ADDITIONAL POLES, ANY COST INCURRED BY OWNER FOR BRACING OF ADDITIONAL POLES OR DAMAGES SHALL BE DEDUCTED FROM MONEY OWED THE CONTRACTOR. CONTRACTOR SHALL COORDINATE WITH UTILITY COMPANIES TO SCHEDULE BRACING OF POLES.
- FOR DETAILS NOT SHOWN ON THE DRAWINGS, AND FOR MATERIALS AND CONSTRUCTION METHODS, USE HOWARD COUNTY DESIGN MANUAL, VOLUME IV, STANDARD SPECIFICATIONS AND DETAILS FOR CONSTRUCTION. THE CONTRACTOR SHALL HAVE A COPY OF VOLUME IV ON THE JOB.
- WHERE TEST PITS HAVE BEEN MADE ON EXISTING UTILITIES, THEY ARE NOTED BY THE SYMBOL  AT THE LOCATION OF THE TEST PIT. A NOTE OR NOTES CONTAINING THE RESULTS OF THE TEST PIT OR PITS IS INCLUDED ON THE DRAWINGS. EXISTING UTILITIES IN THE VICINITY OF THE PROPOSED WORK FOR WHICH TEST PITS HAVE NOT BEEN DUG SHALL BE LOCATED BY THE CONTRACTOR TWO WEEKS IN ADVANCE OF CONSTRUCTION OPERATIONS AT HIS OWN EXPENSE.
- CONTRACTOR SHALL NOTIFY THE FOLLOWING UTILITIES OR AGENCIES AT LEAST FIVE WORKING DAYS BEFORE STARTING WORK SHOWN ON THESE PLANS:
 - STATE HIGHWAY ADMINISTRATION - (410) 531-5533
 - BALTIMORE GAS & ELECTRIC CO. - CONTRACTOR SERVICES - (410) 850-4620
 - BALTIMORE GAS & ELECTRIC CO. UNDERGROUND DAMAGE CONTROL - (410) 787-9068
 - MESS UTILITY - 1-800-257-7777
 - BELL ATLANTIC - 1-800-446-5266
 - COLONIAL PIPELINE CO. - (410) 795-1390
 - BUREAU OF UTILITIES, HOWARD COUNTY DEPARTMENT OF PUBLIC WORKS - (410) 313-4900

PART II - WATER

- ALL WATER MAINS TO BE D.I.P. CLASS 52 UNLESS OTHERWISE NOTED.
- TOPS OF ALL WATER MAINS TO HAVE A MINIMUM OF 3'-11/2" COVER UNLESS OTHERWISE NOTED.
- VALVES ADJACENT TO TEES SHALL BE STRAPPED TO TEES.
- ALL FITTINGS SHALL BE BUTTRESSED OR ANCHORED WITH CONCRETE IN ACCORDANCE WITH THE STANDARD DETAILS UNLESS OTHERWISE PROVIDED FOR ON THE DRAWINGS.
- FIRE HYDRANTS SHALL BE SET TO THE BURY LINE ELEVATIONS SHOWN ON THE DRAWINGS. ALL FIRE HYDRANTS SHALL BE STRAPPED AND BUTTRESSED WITH CONCRETE IN ACCORDANCE WITH STANDARD DETAILS. SOIL AROUND THE FIRE HYDRANT SHALL BE COMPACTED IN ACCORDANCE WITH SECTION 1000 AND 1005 OF THE STANDARD SPECIFICATIONS.
- THE CONTRACTOR SHALL NOT OPERATE ANY WATER MAIN VALVES ON THE EXISTING WATER SYSTEM.
- ALL WATER HOUSE CONNECTIONS SHALL BE FOR INSIDE METER SETTING, UNLESS OTHERWISE NOTED ON THE PLANS OR IN THE SPECIFICATIONS.
- ALL D.I.P. FITTINGS SHALL BE IN ACCORDANCE WITH A.W.W.A. SPECIFICATION C-153 DUCTILE IRON COMPACT FITTINGS, 3 INCH THROUGH 12 INCH FOR WATER AND OTHER LIQUIDS.
- ALL EXISTING VALVES TO BE CLOSED WHEN CONNECTION TO THE SYSTEM IS MADE.
- SPRINKLER SYSTEMS FOR ALL TOWNHOMES OR MULTI-FAMILY DWELLING UNITS SHALL HAVE A MINIMUM OF 1' CONNECTION WITH A 3/4" METER.

PART III - SEWER

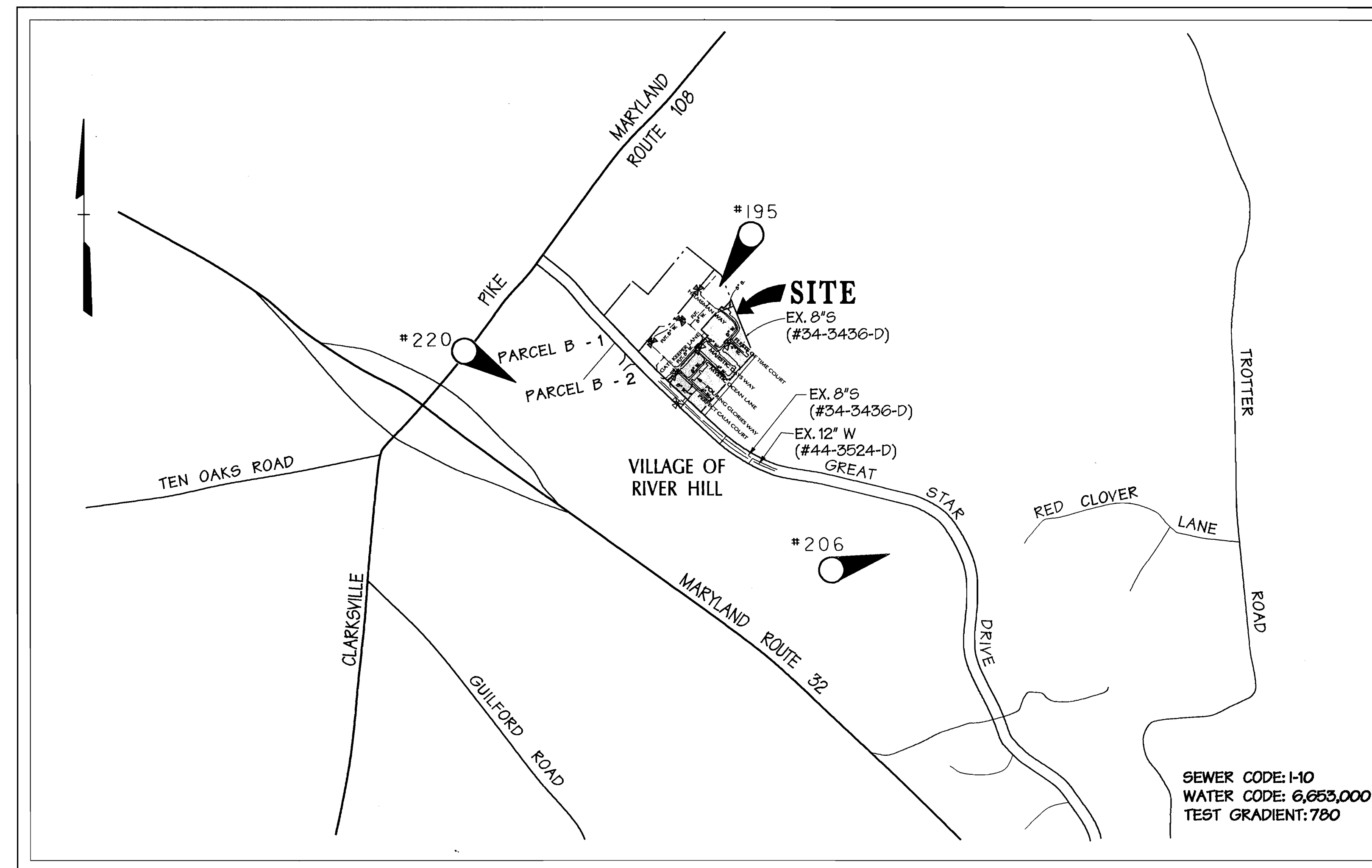
- ALL SEWER MAINS SHALL BE D.I.P. OR P.V.C. UNLESS OTHERWISE NOTED.
- ALL MANHOLES SHALL BE 4'-0" INSIDE DIAMETER UNLESS OTHERWISE NOTED.
- FORCE MAINS SHALL BE D.I.P. ONLY.
- MANHOLES SHOWN WITH 12" AND 16" WALLS ARE FOR BRICK MANHOLES ONLY.
- MANHOLES DESIGNATED W.T. IN PLAN AND PROFILE SHALL HAVE WATERTIGHT FRAME AND COVERS, STANDARD DETAIL G5.52 WHERE WATERTIGHT MANHOLE FRAME AND COVER IS USED, SET TOP OF FRAME 1'-6" ABOVE FINISHED GRADE UNLESS OTHERWISE NOTED ON THE DRAWINGS.
- HOUSE(S) WITH THE SYMBOL "C.N.S." INDICATES THAT CELLAR CANNOT BE SERVED.

SHEET INDEX	
NO.	PLAN
1 OF 3	TITLE SHEET
2 OF 3	WATER & SEWER PLAN
3 OF 3	WATER & SEWER PROFILES

CONTRACT NO. 34-3889-D

5th ELECTION DISTRICT
HOWARD COUNTY, MARYLAND
DEPARTMENT OF PUBLIC WORKS

QUANTITIES				
ITEMS	QUANTITIES ESTIMATED	AS-BUILT		
		QUANTITIES	TYPE	MANUFACTURER / SUPPLIER
4" D.I.P.	429'			
8" D.I.P.	1315'			
6" D.I.P.	57'			
1" COPPER	700'			
8" X 4" X 8" RED. TEE	2			
8" X 8" TEE	2			
8" X 4" TEE	1			
8" VALVE	6			
6" VALVE	3			
4" CAP	3			
8" CAP	3			
6" FIRE HYDRANT	3			
(8") VERT. BEND	2			
(8") HORZ. BEND	5			
(8") HORZ. BEND	2			
8" X 6" TEE	3			
4" VALVE	3			
8" S.	131			
4" DIA. MH	3			
NAME OF UTILITY CONTRACTOR:				
SURVEY AND DRAFTING DIVISION AS-BUILT DATE:				



VICINITY MAP
SCALE: 1" = 600'

BENCHMARK
DESCRIPTION

POINT #	DESCRIPTION	ELEV.	N	E
195	1/2" x 10" REBAR w/ TRAV. CAP	445.28	N 561932.019	E 1331138.577
206	1/2" x 10" REBAR w/ TRAV. CAP	374.53	N 559936.249	E 1332228.583
220	1/2" x 10" REBAR w/ TRAV. CAP	467.14	N 561238.646	E 1329635.522

TYPE OF BUILDING:	CONDOMINIUM-TOWNHOUSES
NO. OF UNITS	56
NO. OF WATER SINGLE HOUSE CONNECTIONS:	56
NO. OF WATER DOUBLE HOUSE CONNECTIONS:	-
DRAINAGE AREA:	MIDDLE PATUMENT
TREATMENT PLANT:	LITTLE PATUMENT WATER QUALITY MANAGEMENT CENTER, SAVAGE, HOWARD COUNTY

REVIEWED FOR NATURAL RESOURCES CONSERVATION SERVICE AND MEETS TECHNICAL REQUIREMENT

J.A. Warfield
SIGNATURE DATE: 11/29/00

THIS DEVELOPMENT PLAN IS APPROVED FOR SOIL EROSION AND SEDIMENT CONTROL BY THE HOWARD COUNTY CONSERVATION DISTRICT.

John R. Roberts
APPROVED HOWARD S.C.D. DATE: 11/29/00

SEDIMENT CONTROL MEASURES WILL BE IMPLEMENTED IN ACCORDANCE WITH SECTION 219 OF THE SPECIFICATIONS AND WITH ROAD CONSTRUCTION PLANS SDP-00-137.

DEPARTMENT OF PUBLIC WORKS
HOWARD COUNTY, MARYLAND

DEPARTMENT OF PLANNING & ZONING
HOWARD COUNTY, MARYLAND

DMW
Daft-McCune-Walker, Inc.

A Team of Land Planners,
Landscape Architects,
Golf Course Architects,
Engineers, Surveyors &
Environmental Professionals



DESIGN BY: RLH
DRAWN BY: KDE/MSS
CHECKED BY: RLH
DATE: 11/16/00

BY	NO.	REVISION	DATE

TITLE SHEET

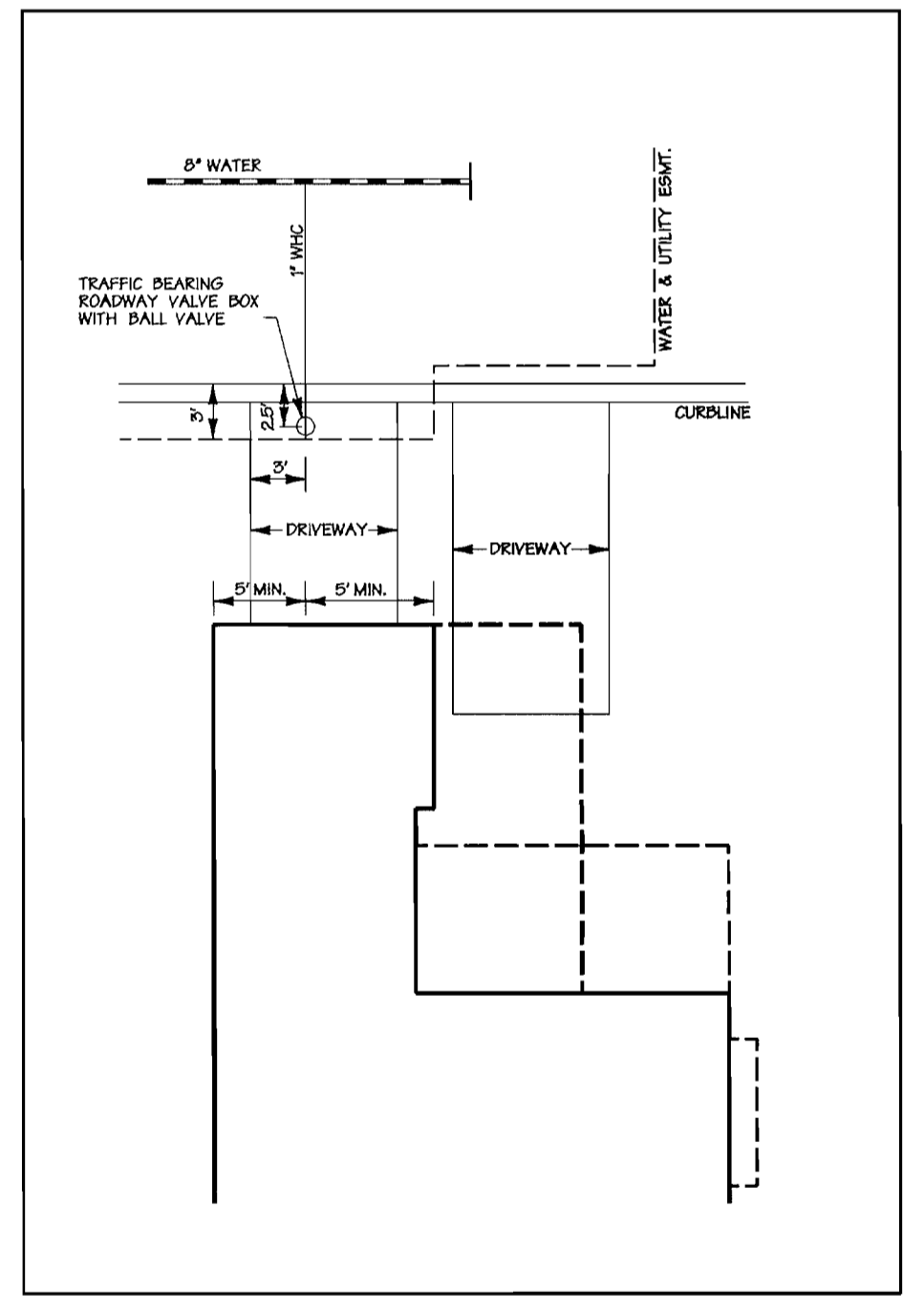
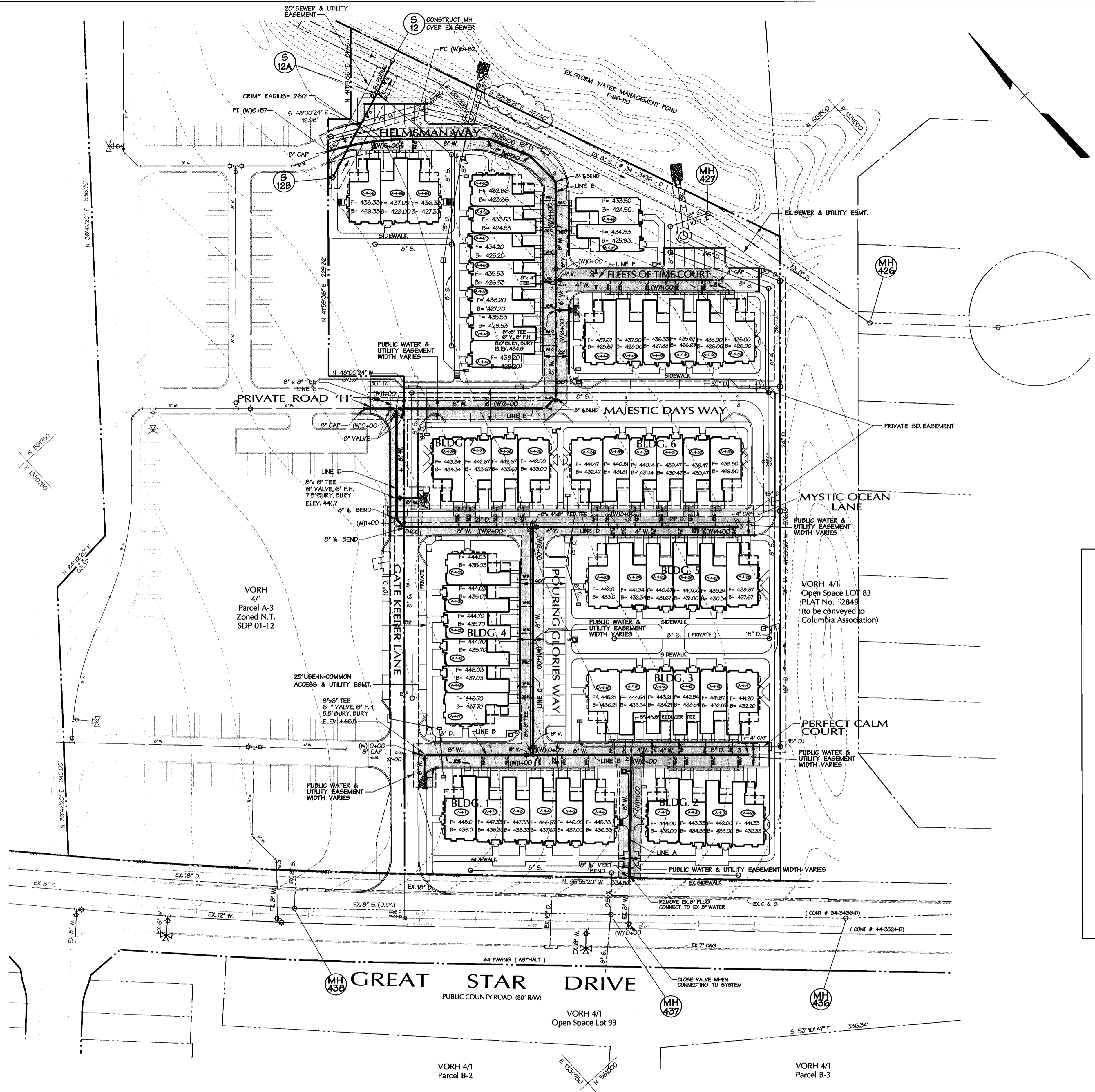
VILLAGE OF RIVER HILL

SECTION 4, AREA 1
TAX MAP 35, LOT A-4
5th ELECTION DISTRICT OF HOWARD COUNTY, MARYLAND

CONTRACT NO. 34-3889-D

SCALE:
As
Shown

SHEET
1 of 3



SCALE: 1" = 10'

WATER MAIN LINE 'A'		
STATION	TYPE	LOCATION
(W) 10+00	EX. 12" x 8" TEE	-
(W) 10+47	CONNET TO EX. 8" W	LOCATED IN FIELD
(W) 11+57	8"x8" TEE	PERFECT CALM COURT STA. (LOCATED IN FIELD) ON E

WATER MAIN LINE 'B'		
STATION	TYPE	LOCATION
(W) 0+00	8" CAP	PERFECT CALM COURT STA. 0+13 ON E
(W) 2+95	4" CAP	PERFECT CALM COURT STA. 3+08 ON E

WATER MAIN LINE 'C'		
STATION	TYPE	LOCATION
(W) 0+00	8" x 8" TEE	SEE LINE 'B'
(W) 2+04	8"x8" TEE	SEE LINE 'D'

WATER MAIN LINE 'D'		
STATION	TYPE	LOCATION
(W) 0+00	8"x8" TEE	SEE LINE 'E'
(W) 0+99	8" 1/2 BEND	GATE KEEPER LANE STA. 3+58 - 7' LT.
(W) 1+09	8" 1/2 BEND	GATE KEEPER LANE STA. 3+50 ON E
(W) 4+08	4" CAP	MYSTIC OCEAN LANE STA. 2+99 - 4' RT.

WATER MAIN LINE 'E'		
STATION	TYPE	LOCATION
(W) 0+71	8" CAP	ROAD 'H' STA. 0+36 - 7' RT.
(W) 2+33	8" 1/2 BEND	MAJESTIC DAYS WAY STA. 1+26 - 7' RT.
(W) 2+47	8" 1/2 BEND	MAJESTIC DAYS WAY STA. 1+36 - 3' LT.
(W) 4+40	8" 1/2 BEND	HELMSMAN WAY STA. 1+95 - 1' RT.
(W) 4+73	8" 1/2 BEND	HELMSMAN WAY STA. 2+29 - 1' LT.
(W) 5+12	8" 1/2 BEND	HELMSMAN WAY STA. 2+69 - 0.3' LT.
(W) 5+82	BEGIN CRIMP	HELMSMAN WAY PC STA. 3+38 - 2.0' LT.
(W) 6+57	END CRIMP / 8" CAP	HELMSMAN WAY PT. STA. 4+45 - 3.3' LT.

WATER MAIN LINE 'F'		
STATION	TYPE	LOCATION
(W) 0+00	8" x 4" TEE	SEE LINE 'E'
(W) 1+40	4" CAP	FLEETS OF TIME COURT STA. 1+46 ON E

NOTE: 1. ALL WATER HOUSE CONNECTIONS SHALL BE ONE INCH DIAMETER WITH A 3/4 INCH METER.
2. ALL ROADS ARE PRIVATE.

DEPARTMENT OF PUBLIC WORKS
HOWARD COUNTY, MARYLAND

Robert W. Beames 11-20-00
CHIEF - BUREAU OF UTILITIES - DATE

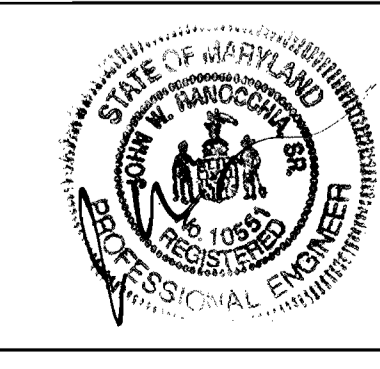
DEPARTMENT OF PLANNING & ZONING
HOWARD COUNTY, MARYLAND

John J. ... 11/20/00
CHIEF - DEVELOPMENT ENGINEERING DIVISION - DATE

DMW
Dah-McCune-Walker, Inc.

A Team of Land Planners,
Landscape Architects,
Golf Course Architects,
Engineers, Surveyors &
Environmental Professionals

200 East Pennsylvania Avenue
Towson, Maryland 21286
(410) 296-3333
Fax 296-4705



DESIGN BY:	RLH				
DRAWN BY:	KDE/MSS				
CHECKED BY:	RLW				
DATE:	11/16/00	BY	NO.	REVISION	DATE

WATER & SEWER PLAN

600 SCALE MAP NO. 35 BLOCK NO. 1

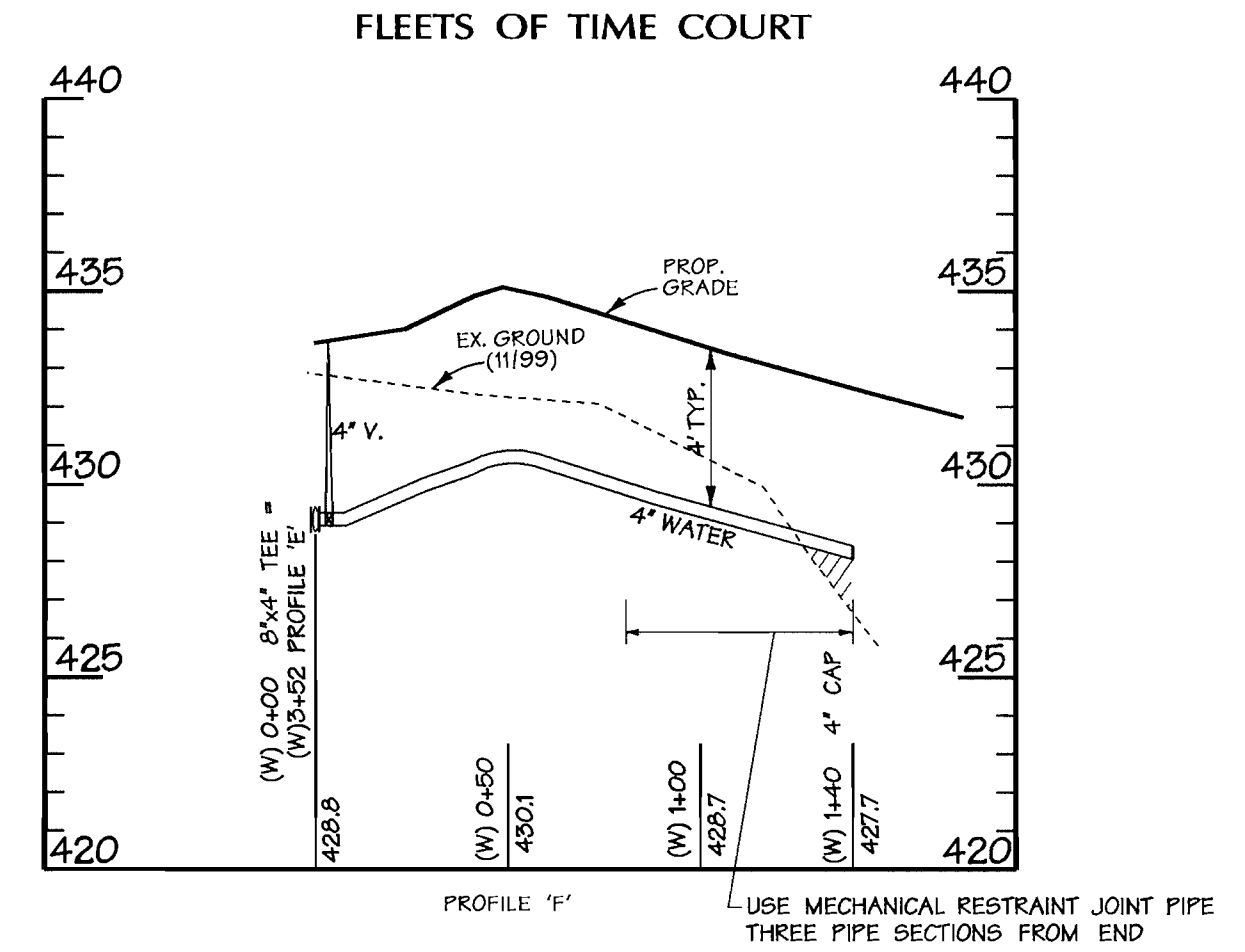
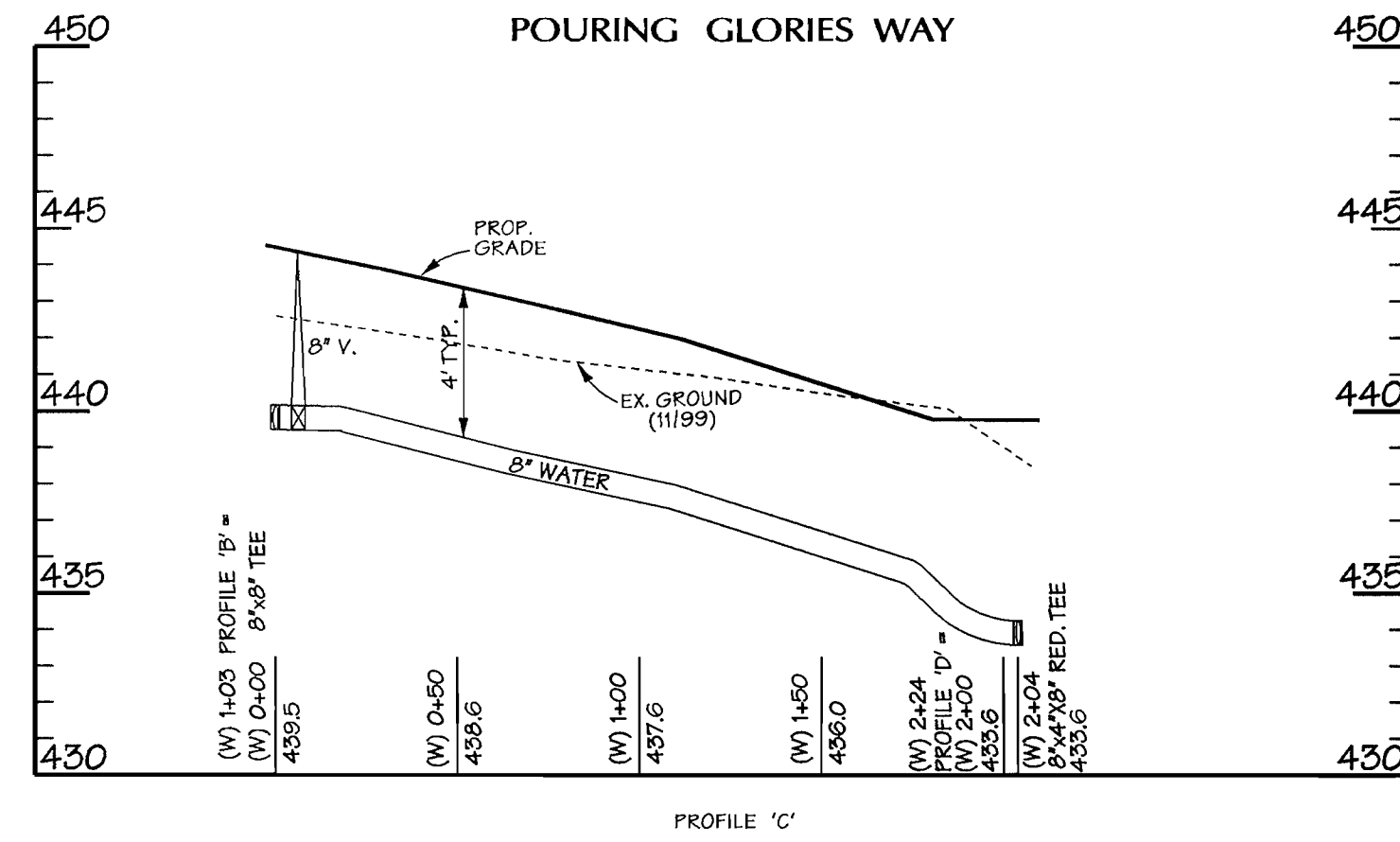
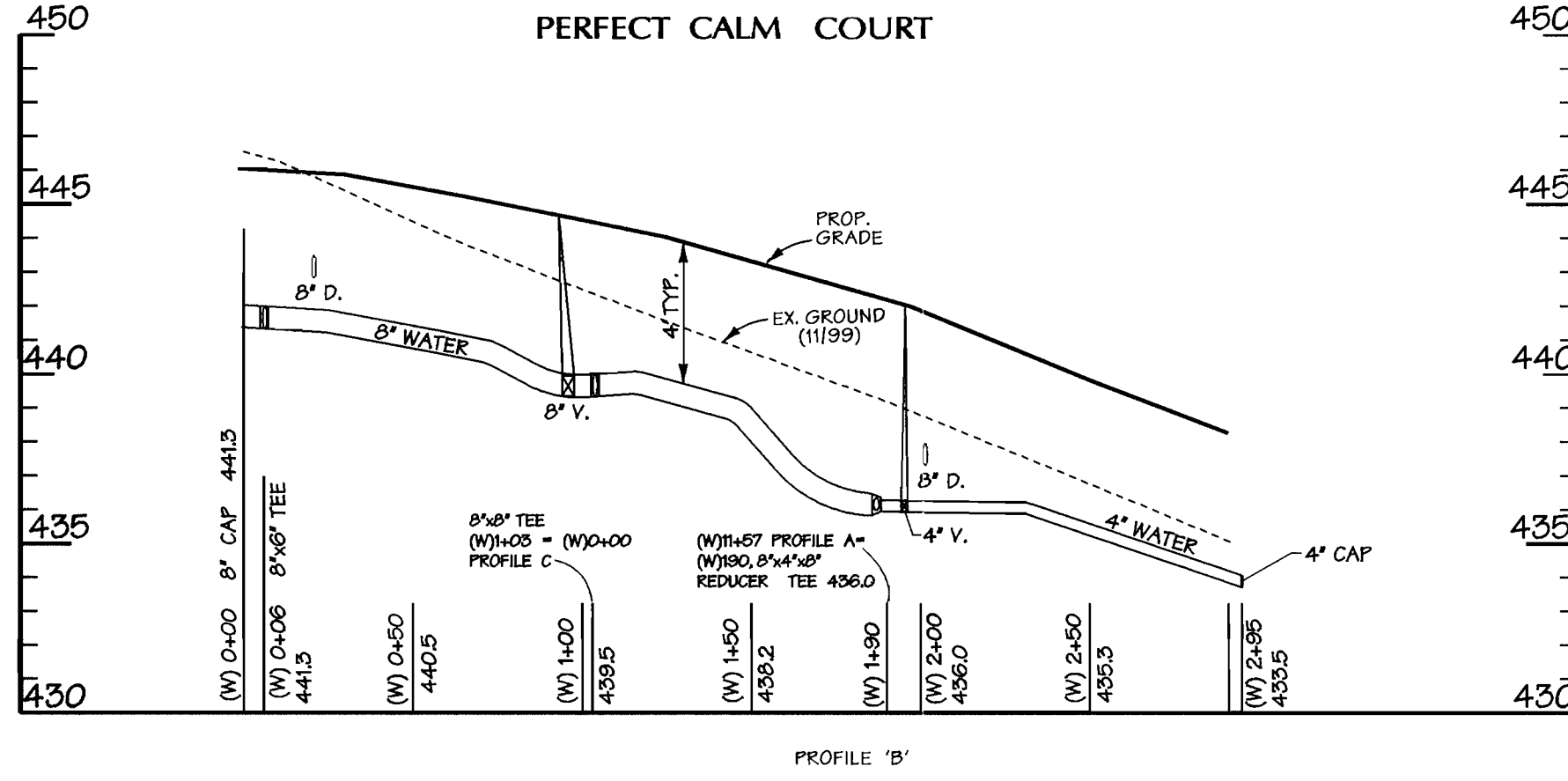
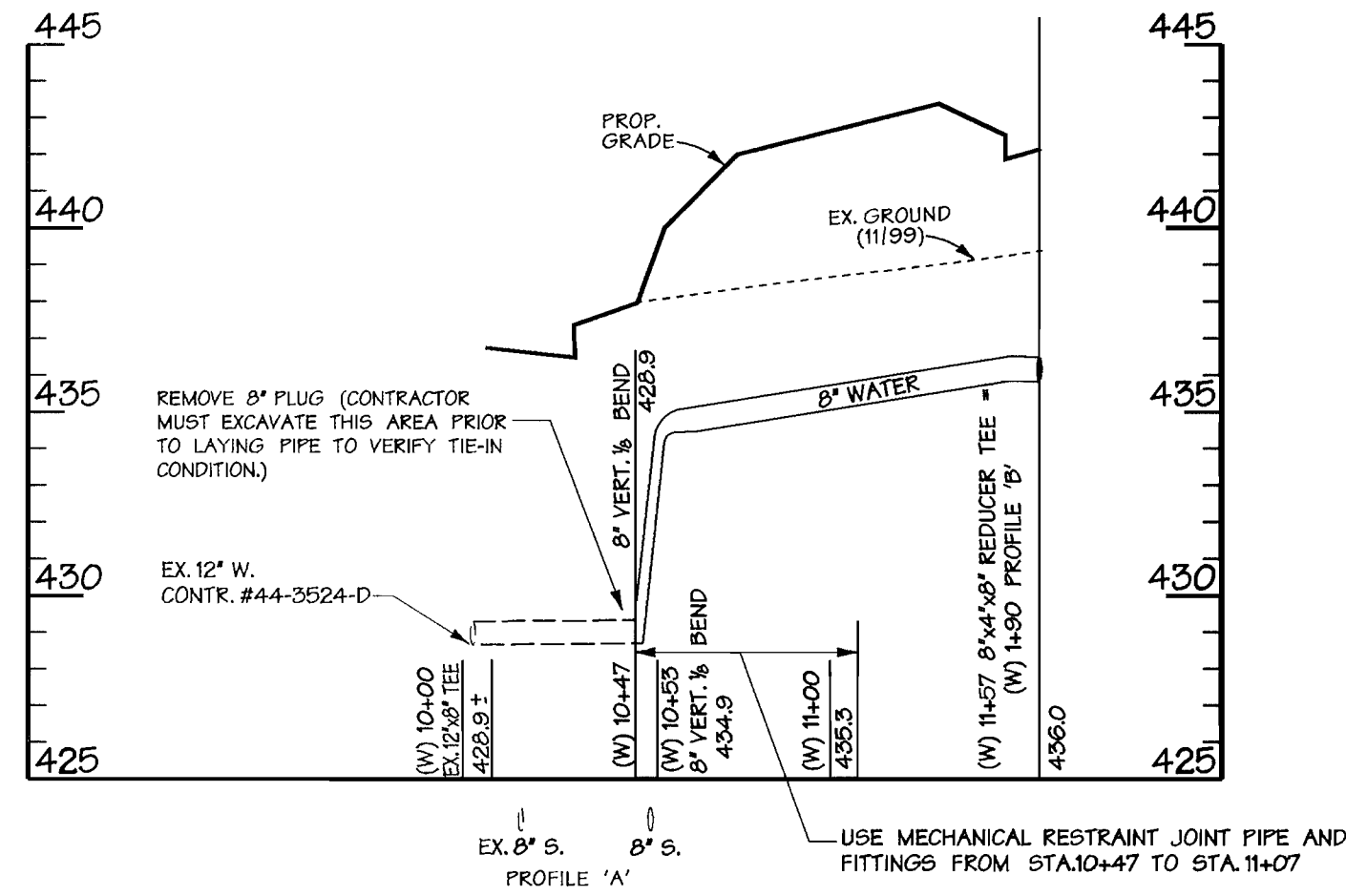
VILLAGE OF RIVER HILL
SECTION 4, AREA 1
TAX MAP 35, LOT A-4
5th ELECTION DISTRICT OF HOWARD COUNTY, MARYLAND
CONTRACT NO. 34-3889-D

SCALE: 1"=50'
SHEET 2 of 3

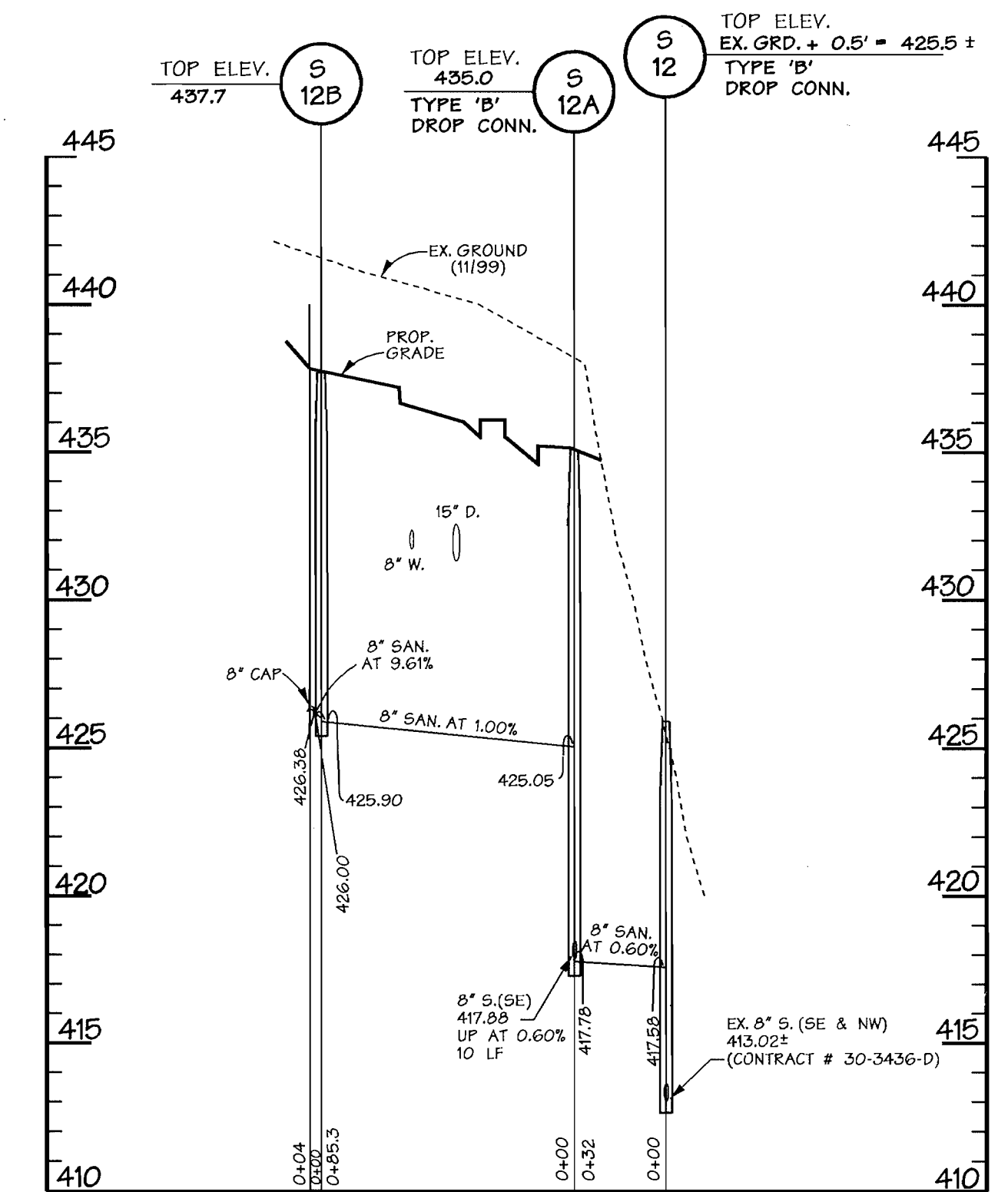
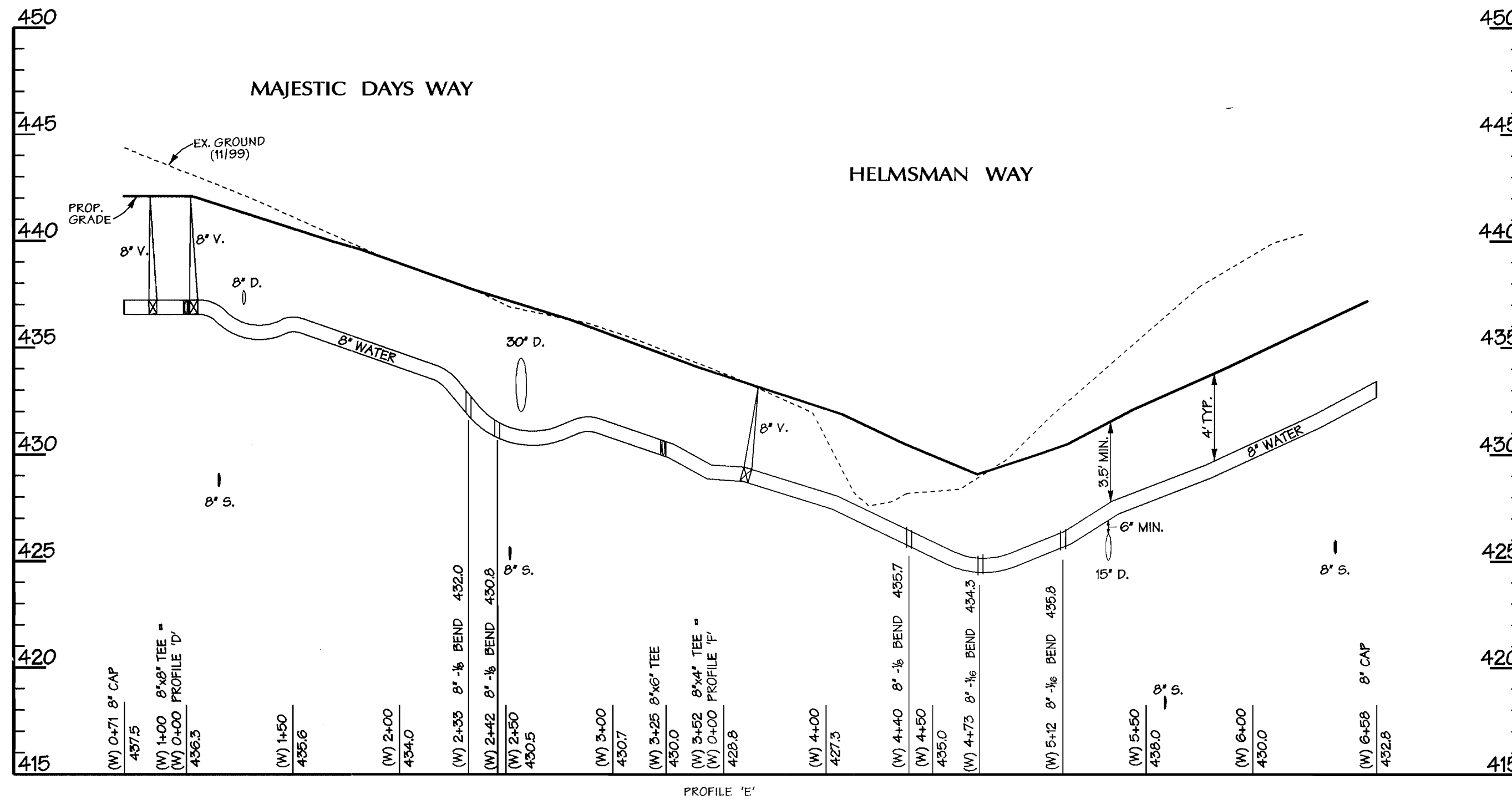
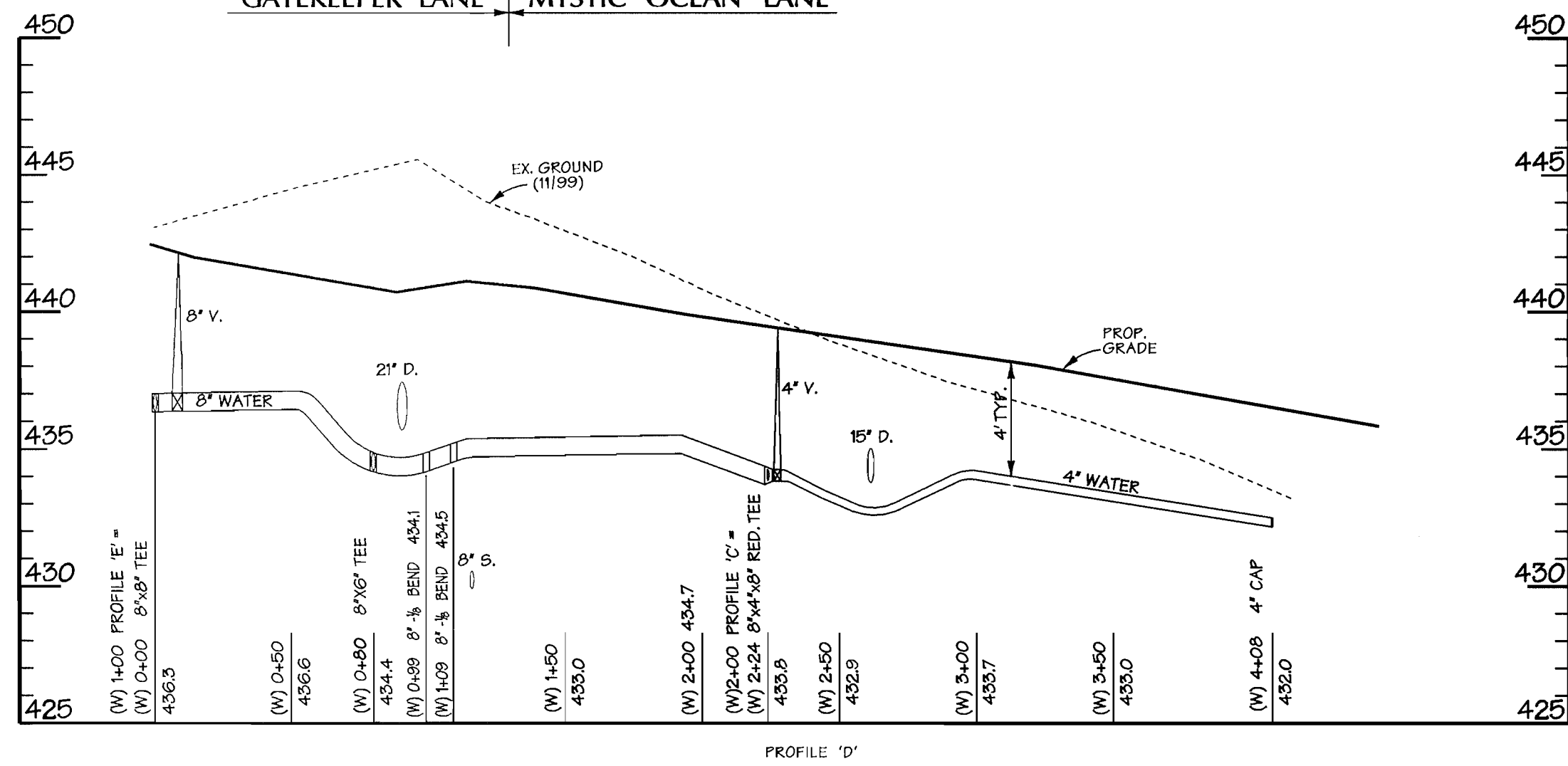
Thu Nov 16 17:08:58 2000 r:\0005\0005.mxd

Thu Nov 16 17:08:58 2000 r:\0005\0005.mxd

PUBLIC WATER & UTILITY ESMT. PERFECT CALM COURT



GATEKEEPER LANE MYSTIC OCEAN LANE



SEWER STRUCTURE TABLE

QTY.	LOCATION
S 12	314 L.F. UPSTREAM FROM MH 427
S 12A	N 561784.24 E 1331203.45
S 12B	N 561754.72 E 1331123.40

7th Nov 16 17:25:58 2000 n:\0000\0005\W2

DEPARTMENT OF PUBLIC WORKS
HOWARD COUNTY, MARYLAND

Robert Beaman 11-20-00
CHIEF - BUREAU OF UTILITIES - DATE

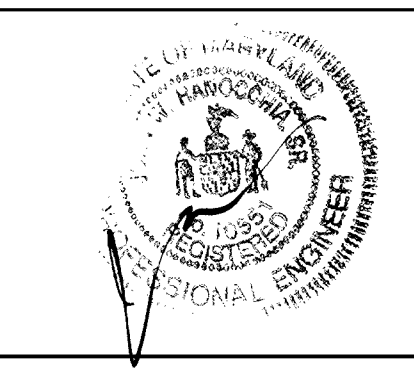
DEPARTMENT OF PLANNING & ZONING
HOWARD COUNTY, MARYLAND

Michael Damman 11/20/00
CHIEF - DEVELOPMENT ENGINEERING DIVISION - DATE

DMW
Daft-McCune-Walker, Inc.

A Team of Land Planners,
Landscape Architects,
Township, Maryland 21286
(410) 296-3333
Fax 296-4705

Environmental Professionals



DESIGN BY: RLH
DRAWN BY: KDE/MSS
CHECKED BY: RLH
DATE: 11/16/00

BY	NO.	REVISION	DATE

WATER & SEWER PROFILES

600 SCALE MAP NO. 35 BLOCK NO. 1

VILLAGE OF RIVER HILL

SECTION 4, AREA 1
TAX MAP 35, LOT A-4
5th ELECTION DISTRICT OF HOWARD COUNTY, MARYLAND

CONTRACT NO. 34-3889-D

SCALE:
HORZ. 1"=50'
VERT. 1"=5'

SHEET
3 of 3

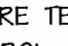
VILLAGE OF RIVER HILL

WATER & SEWER MAIN EXTENSION

SECTION 4 • AREA 1 • LOT A-4

GENERAL NOTES

PART I - GENERAL

- APPROXIMATE LOCATION OF EXISTING MAINS ARE SHOWN. THE CONTRACTOR SHALL TAKE ALL NECESSARY PRECAUTIONS TO PROTECT EXISTING MAINS AND SERVICES AND MAINTAIN UNINTERRUPTED SUPPLY. ANY DAMAGE INCURRED SHALL BE REPAIRED IMMEDIATELY TO THE SATISFACTION OF THE ENGINEER AT THE CONTRACTOR'S EXPENSE.
- ALL HORIZONTAL CONTROLS ARE BASED ON MARYLAND STATE COORDINATES (NAD '83).
- ALL VERTICAL CONTROLS ARE BASED ON U.S.G.S. DATA.
- ALL PIPE ELEVATIONS SHOWN ARE INVERT ELEVATIONS.
- CLEAR ALL UTILITIES BY A MINIMUM OF 6' CLEAR. ALL POLES BY 2'-0" MIN. OR TUNNEL AS REQUIRED. THE OWNER HAS CONTACTED UTILITY COMPANIES AND MADE ARRANGEMENTS FOR BRACING OF POLES AS SHOWN ON DRAWINGS. IN EVENT THE CONTRACTOR'S WORK REQUIRES THE BRACING OF ADDITIONAL POLES, ANY COST INCURRED BY OWNER FOR BRACING OF ADDITIONAL POLES OR DAMAGES SHALL BE DEDUCTED FROM MONEY OWED THE CONTRACTOR. CONTRACTOR SHALL COORDINATE WITH UTILITY COMPANIES TO SCHEDULE BRACING OF POLES.
- FOR DETAILS NOT SHOWN ON THE DRAWINGS, AND FOR MATERIALS AND CONSTRUCTION METHODS, USE HOWARD COUNTY DESIGN MANUAL, VOLUME IV, STANDARD SPECIFICATIONS AND DETAILS FOR CONSTRUCTION. THE CONTRACTOR SHALL HAVE A COPY OF VOLUME IV ON THE JOB.
- WHERE TEST PITS HAVE BEEN MADE ON EXISTING UTILITIES, THEY ARE NOTED BY THE SYMBOL  AT THE LOCATION OF THE TEST PIT. A NOTE OR NOTES CONTAINING THE RESULTS OF THE TEST PIT OR PITS IS INCLUDED ON THE DRAWINGS. EXISTING UTILITIES IN THE VICINITY OF THE PROPOSED WORK FOR WHICH TEST PITS HAVE NOT BEEN DUG SHALL BE LOCATED BY THE CONTRACTOR TWO WEEKS IN ADVANCE OF CONSTRUCTION OPERATIONS AT HIS OWN EXPENSE.
- CONTRACTOR SHALL NOTIFY THE FOLLOWING UTILITIES OR AGENCIES AT LEAST FIVE WORKING DAYS BEFORE STARTING WORK SHOWN ON THESE PLANS:
 - STATE HIGHWAY ADMINISTRATION - (410) 531-5533
 - BALTIMORE GAS & ELECTRIC CO. - CONTRACTOR SERVICES - (410) 850-4620
 - BALTIMORE GAS & ELECTRIC CO. UNDERGROUND DAMAGE CONTROL - (410) 787-9068
 - WESG UTILITY - 1-800-257-7777
 - BELL ATLANTIC - 1-800-446-5266
 - COLONIAL PIPELINE CO. - (410) 795-1390
 - BUREAU OF UTILITIES, HOWARD COUNTY DEPARTMENT OF PUBLIC WORKS - (410) 313-4900
- TREES AND SHRUBS ARE TO BE PROTECTED FROM DAMAGE TO MAXIMUM EXTENT. TREES AND SHRUBS LOCATED WITHIN THE CONSTRUCTION STRIP ARE NOT TO BE REMOVED OR DAMAGED BY THE CONTRACTOR.
- CONTRACTOR SHALL REMOVE TREES, STUMPS AND ROOTS ALONG LINE OF EXCAVATION. PAYMENT FOR SUCH REMOVAL SHALL BE INCLUDED IN THE UNIT PRICE BID FOR CONSTRUCTION OF THE MAIN.
- THE CONTRACTOR SHALL NOTIFY THE BUREAU OF HIGHWAYS, HOWARD COUNTY, AT 410-313-2450 AT LEAST FIVE (5) WORKING DAYS BEFORE ANY OPEN CUT OF ANY COUNTY ROAD OR BORING/JACKING OPERATION IN COUNTY ROADS FOR LAYING WATER/SEWER MAINS OR HOUSE CONNECTIONS. THE APPROVAL OF THESE DRAWINGS WILL CONSTITUTE COMPLIANCE WITH DPW REQUIREMENTS PER SECTION 18.114(a) OF THE HOWARD COUNTY CODE.

PART II - WATER

- ALL WATER MAINS TO BE D.I.P. CLASS 52 UNLESS OTHERWISE NOTED.
- TOPS OF ALL WATER MAINS TO HAVE A MINIMUM OF 3'-12" COVER UNLESS OTHERWISE NOTED.
- VALVES ADJACENT TO TEES SHALL BE STRAPPED TO TEES.
- ALL FITTINGS SHALL BE BUTTRESSED OR ANCHORED WITH CONCRETE IN ACCORDANCE WITH THE STANDARD DETAILS UNLESS OTHERWISE PROVIDED FOR ON THE DRAWINGS.
- FIRE HYDRANTS SHALL BE SET TO THE BURY LINE ELEVATIONS SHOWN ON THE DRAWINGS. ALL FIRE HYDRANTS SHALL BE STRAPPED AND BUTTRESSED WITH CONCRETE IN ACCORDANCE WITH STANDARD DETAILS. SOIL AROUND THE FIRE HYDRANT SHALL BE COMPACTED IN ACCORDANCE WITH SECTION 1000 AND 1005 OF THE STANDARD SPECIFICATIONS.
- THE CONTRACTOR SHALL NOT OPERATE ANY WATER MAIN VALVES ON THE EXISTING WATER SYSTEM.
- ALL WATER HOUSE CONNECTIONS SHALL BE FOR INSIDE METER SETTING, UNLESS OTHERWISE NOTED ON THE PLANS OR IN THE SPECIFICATIONS.
- ALL D.I.P. FITTINGS SHALL BE IN ACCORDANCE WITH A.W.W.A. SPECIFICATION C-153 DUCTILE IRON COMPACT FITTINGS, 3 INCH THROUGH 12 INCH FOR WATER AND OTHER LIQUIDS.
- ALL EXISTING VALVES TO BE CLOSED WHEN CONNECTION TO THE SYSTEM IS MADE.
- SPRINKLER SYSTEMS FOR ALL TOWNHOMES OR MULTI-FAMILY DWELLING UNITS SHALL HAVE A MINIMUM OF 1' CONNECTION WITH A 3/4" METER.

PART III - SEWER

- ALL SEWER MAINS SHALL BE D.I.P. OR P.V.C. UNLESS OTHERWISE NOTED.
- ALL MANHOLES SHALL BE 4'-0" INSIDE DIAMETER UNLESS OTHERWISE NOTED.
- FORCE MAINS SHALL BE D.I.P. ONLY.
- MANHOLES SHOWN WITH 12" AND 16" WALLS ARE FOR BRICK MANHOLES ONLY.
- MANHOLES DESIGNATED W.T. IN PLAN AND PROFILE SHALL HAVE WATERTIGHT FRAME AND COVERS, STANDARD DETAIL G5.52. WHERE WATERTIGHT MANHOLE FRAME AND COVER IS USED, SET TOP OF FRAME 1'-6" ABOVE FINISHED GRADE UNLESS OTHERWISE NOTED ON THE DRAWINGS.
- HOUSE(S) WITH THE SYMBOL "C.N.S." INDICATES THAT CELLAR CANNOT BE SERVED.

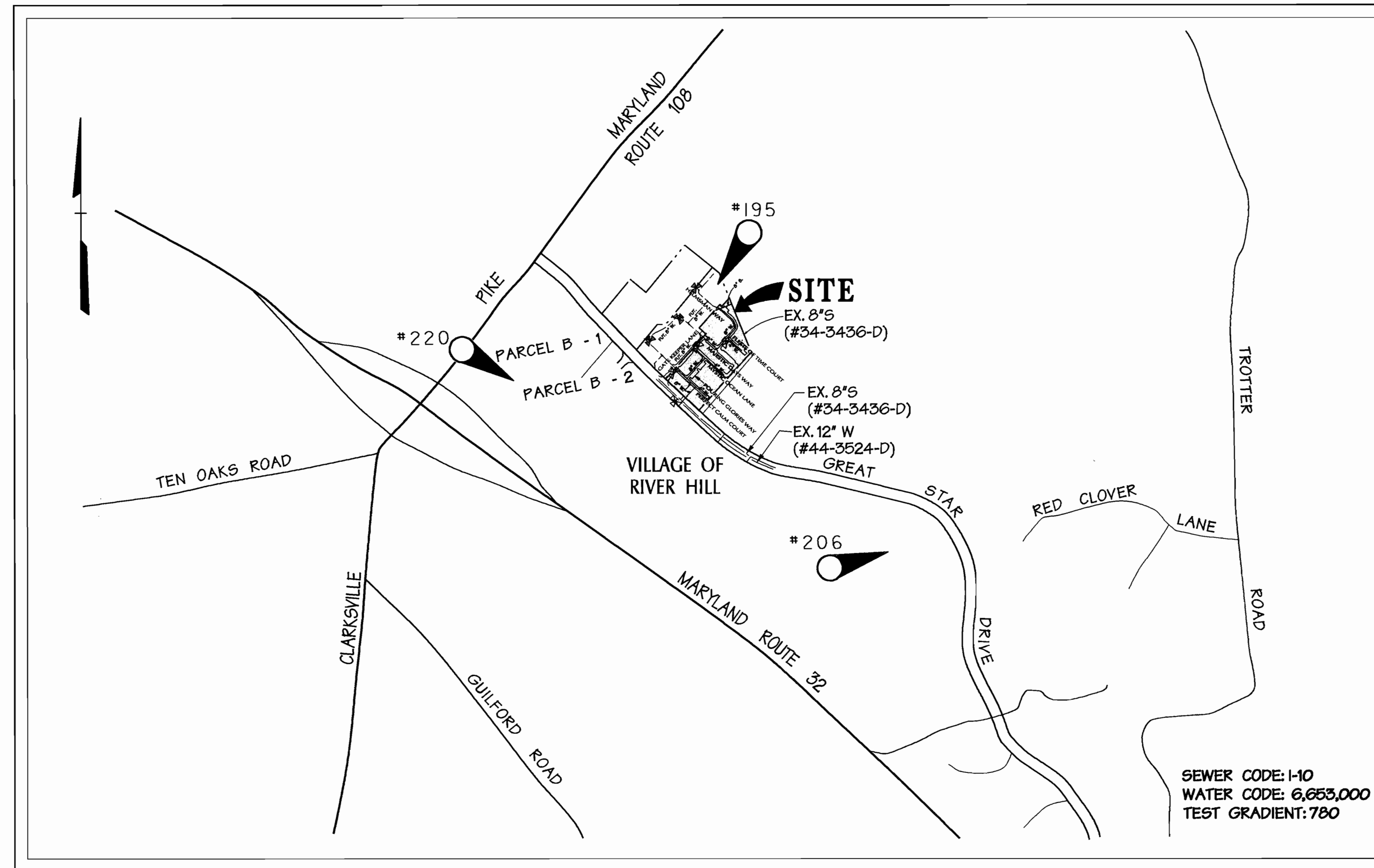
SHEET INDEX	
NO.	PLAN
1 OF 3	TITLE SHEET
2 OF 3	WATER & SEWER PLAN
3 OF 3	WATER & SEWER PROFILES

CONTRACT NO. 34-3889-D

5th ELECTION DISTRICT
HOWARD COUNTY, MARYLAND
DEPARTMENT OF PUBLIC WORKS

QUANTITIES				
ITEMS	QUANTITIES ESTIMATED	AS-BUILT		
		QUANTITIES	TYPE	MANUFACTURER / SUPPLIER
4" D.I.P.	429'	419	OL52 D.I.P.	GRIFIN PIPE
8" D.I.P.	1315'	1234	OL52 D.I.P.	" "
6" D.I.P.	57'	57	OL52 D.I.P.	" "
1" COPPER	700'	850	COPPER "K"	CAMBRIDGE-LEE 1 A-1 PIPE CO.
8" X 4" X 8" RED. TEE	2	3		U.S. FILTER
8" X 8" TEE	2	2		" "
8" X 4" TEE	1	1		" "
8" VALVE	6	6		AMERICAN
6" VALVE	3	3		AMERICAN
4" CAP	3	3		U.S. FILTER
8" CAP	3	3		U.S. FILTER
6" FIRE HYDRANT	3	3		AMERICAN
(8") VERT. BEND	2	2		U.S. FILTER
(8") HORZ. BEND	5	5		" "
(8") HORZ. BEND	2	2		" "
8" X 6" TEE	3	3		" "
4" VALVE	3	3		AMERICAN
8" S.	131	130	P.V.C.	U.S. FILTER
4" DIA. MH	3	3		ATLANTIC-PRECAST

NAME OF UTILITY CONTRACTOR: "IACOBUCCI"
SURVEY AND DRAFTING DIVISION AS-BUILT DATE: MAY 20, 2001



VICINITY MAP

SCALE: 1" = 600'

BENCHMARK

POINT #	DESCRIPTION	ELEV.	N	E
196	1/2" x 18" REBAR w/ TRAV. CAP	446.28	N 561932.019	E 1331138.577
206	1/2" x 18" REBAR w/ TRAV. CAP	374.53	N 559936.249	E 1332228.563
220	1/2" x 18" REBAR w/ TRAV. CAP	457.14	N 561238.646	E 1329635.522

TYPE OF BUILDING:	CONDOMINIUM-TOWNHOUSES
NO. OF UNITS	56
NO. OF WATER SINGLE HOUSE CONNECTIONS:	56
NO. OF WATER DOUBLE HOUSE CONNECTIONS:	—
DRAINAGE AREA:	MIDDLE PATUXENT
TREATMENT PLANT:	LITTLE PATUXENT WATER QUALITY MANAGEMENT CENTER, SAVAGE, HOWARD COUNTY

REVIEWED FOR NATURAL RESOURCES CONSERVATION SERVICE AND MEETS TECHNICAL REQUIREMENT

J.H. Warfield 11/24/00
SIGNATURE DATE

THIS DEVELOPMENT PLAN IS APPROVED FOR SOIL EROSION AND SEDIMENT CONTROL BY THE HOWARD COUNTY CONSERVATION DISTRICT.

APPROVED
Paul R. Hunter 11/24/00
HOWARD S.C.D. DATE

SEDIMENT CONTROL MEASURES WILL BE IMPLEMENTED IN ACCORDANCE WITH SECTION 219 OF THE SPECIFICATIONS AND WITH ROAD CONSTRUCTION PLANS SDP-00-137.

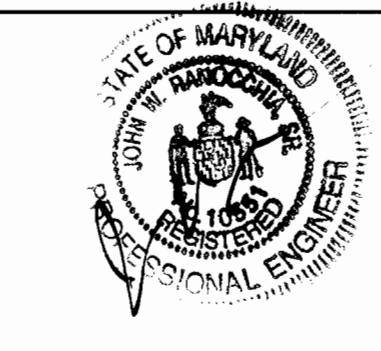
DEPARTMENT OF PUBLIC WORKS
HOWARD COUNTY, MARYLAND

Robert J. Bruner 11-20-00
CHIEF - BUREAU OF UTILITIES - DATE

DEPARTMENT OF PLANNING & ZONING
HOWARD COUNTY, MARYLAND

Michael J. Bruner 11/24/00
CHIEF - DEVELOPMENT ENGINEERING DIVISION - DATE

DMW
Daft-McCune-Walker, Inc.
A Team of Land Planners, Landscape Architects, Golf Course Architects, Engineers, Surveyors & Environmental Professionals
200 East Pennsylvania Avenue
Towson, Maryland 21286
(410) 296-3333
Fax 296-4705



DESIGN BY: RLH
DRAWN BY: KDE/MSS
CHECKED BY: RLH
DATE: 11/16/00

DATE: 11/16/00
BY NO. 1
REVISION: AS-BUILT CONDITIONS ADDED TO PLAN
DATE: 7/18/01

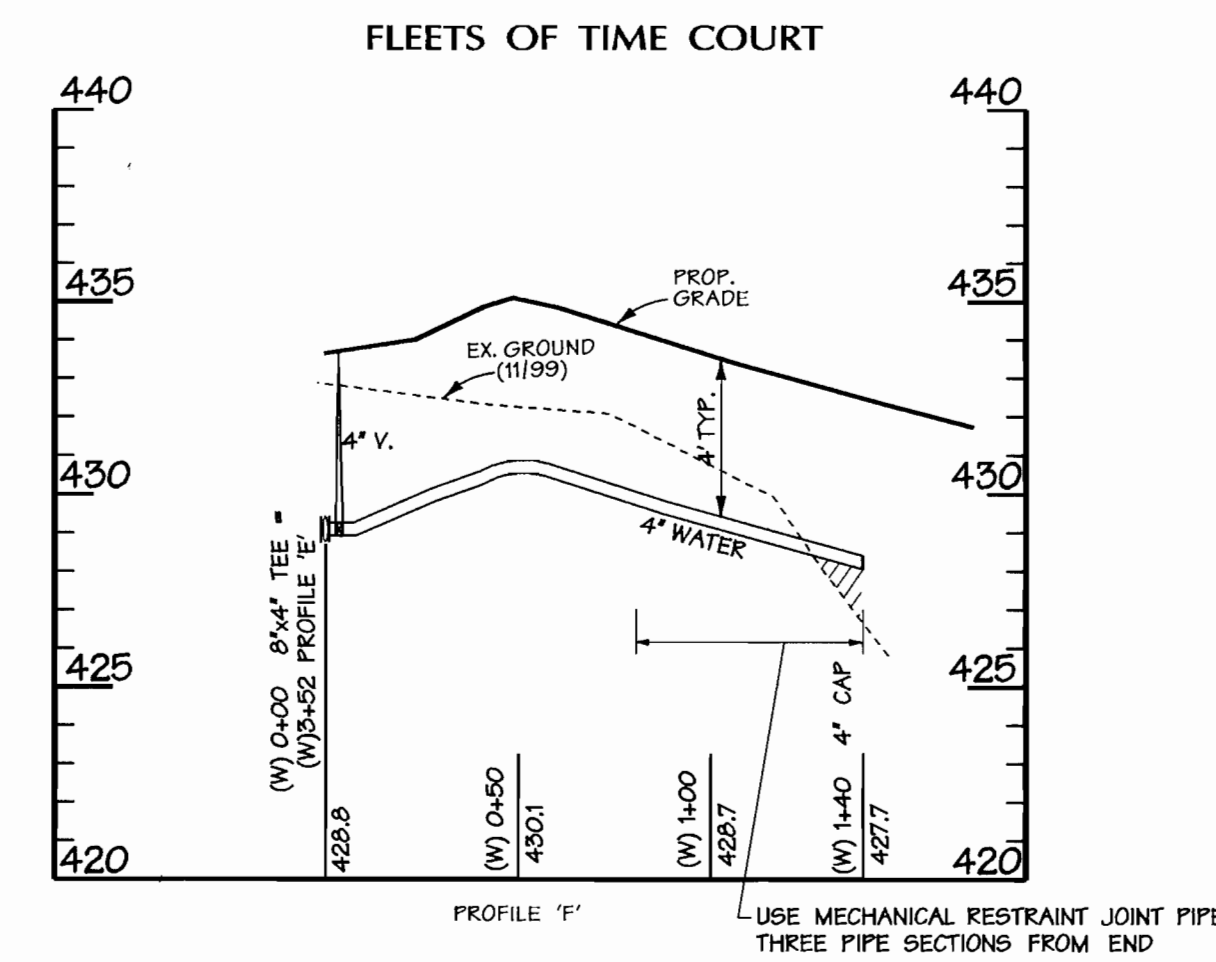
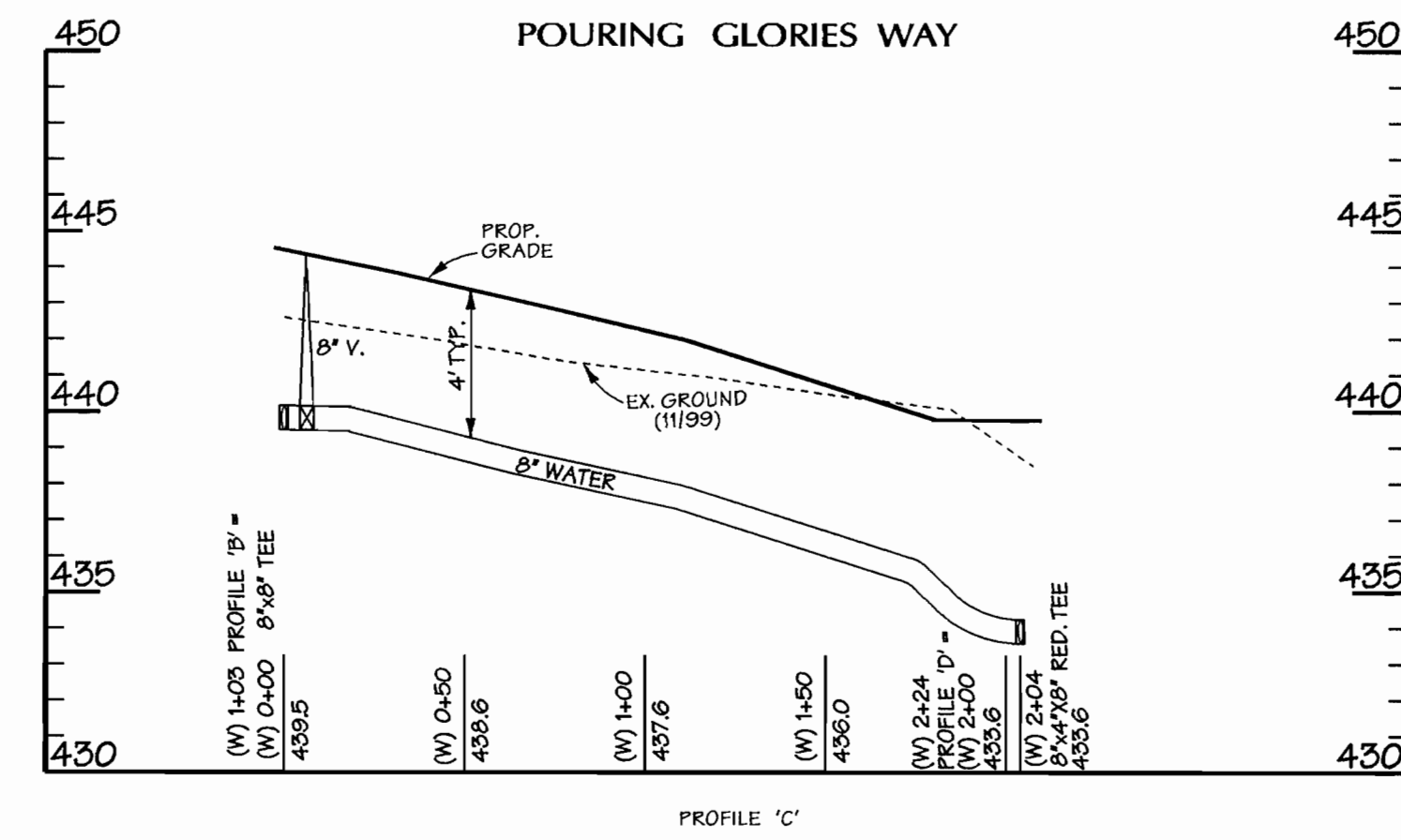
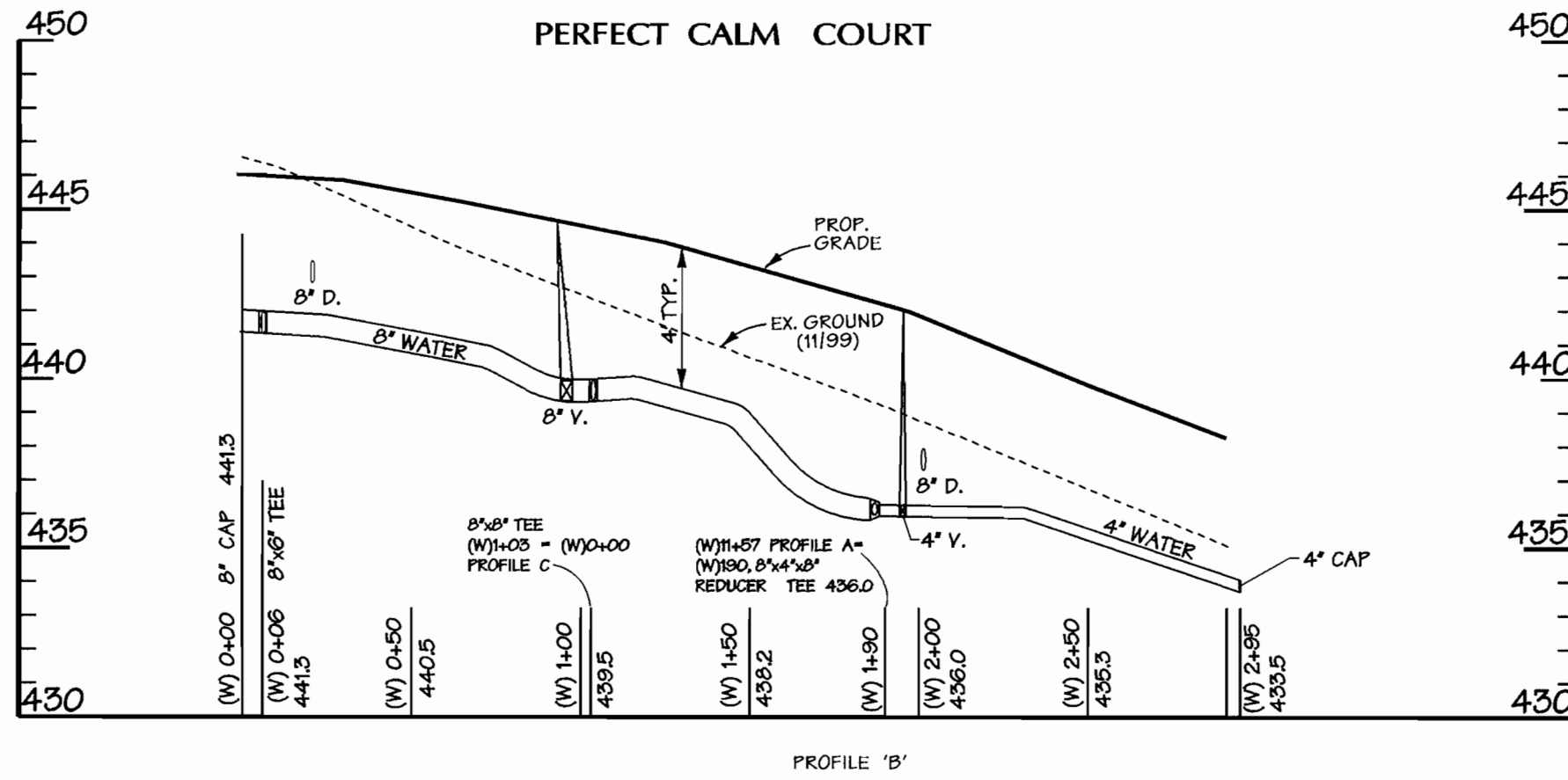
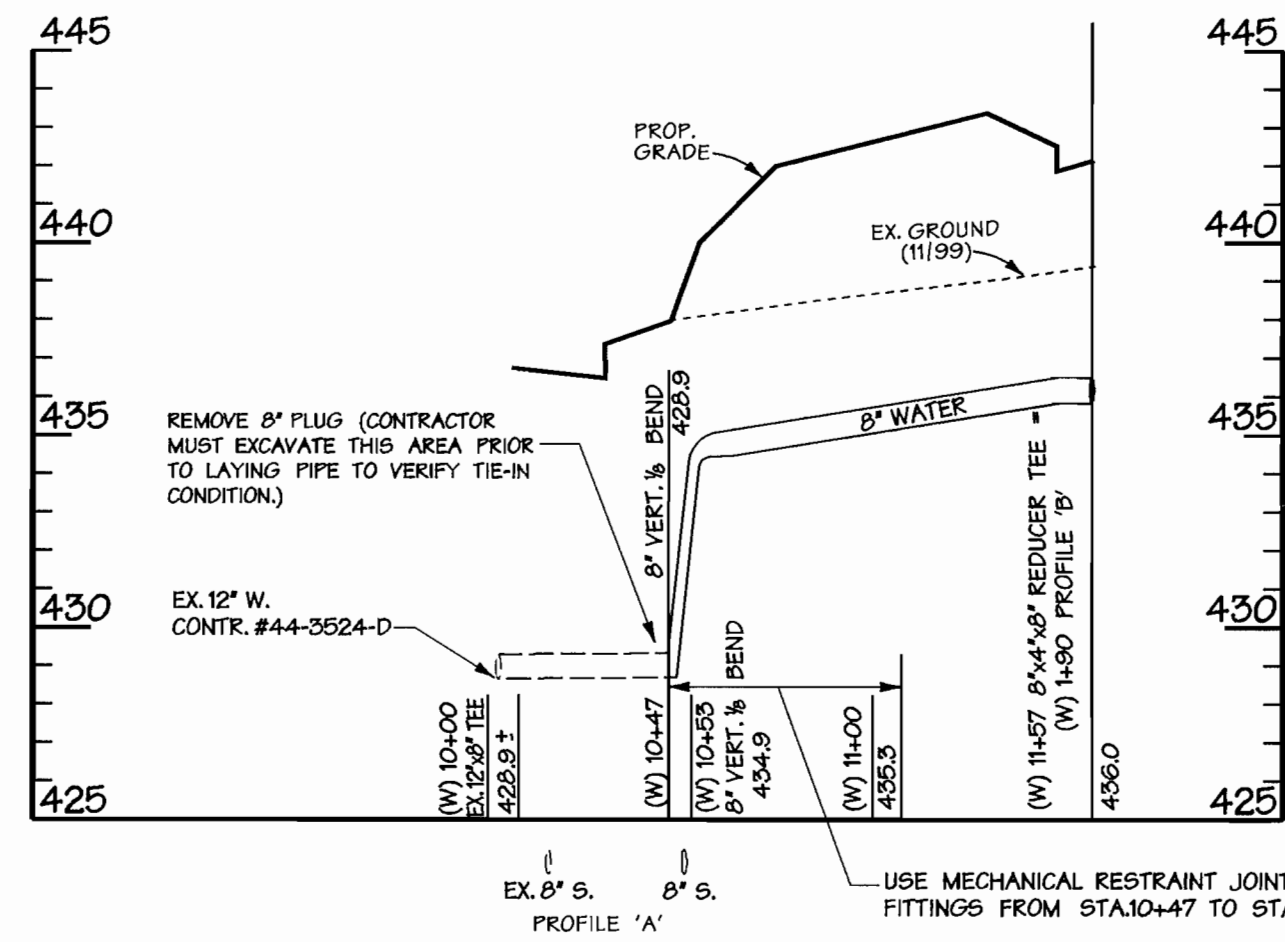
TITLE SHEET

600 SCALE MAP NO. 35 BLOCK NO. 1

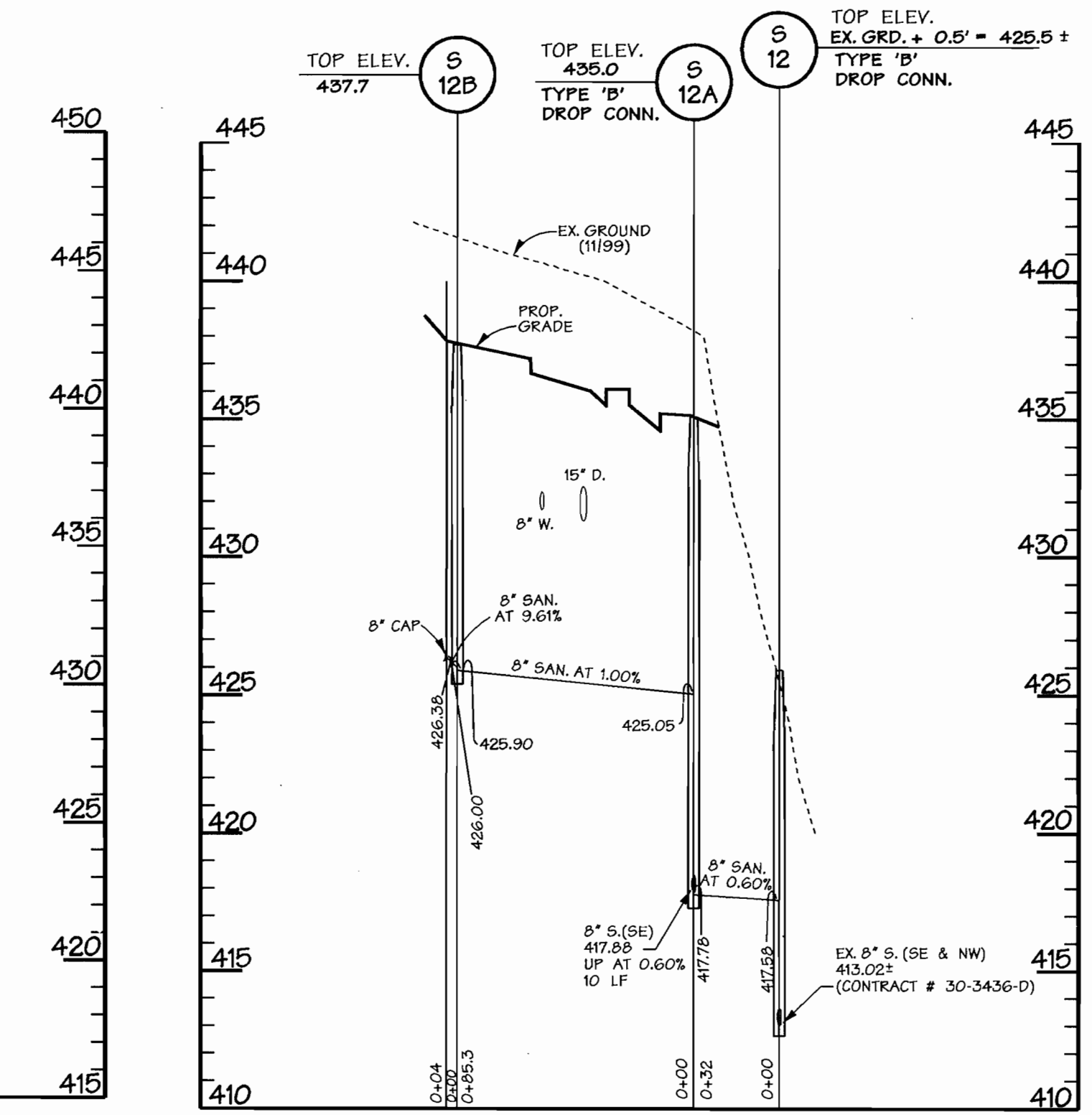
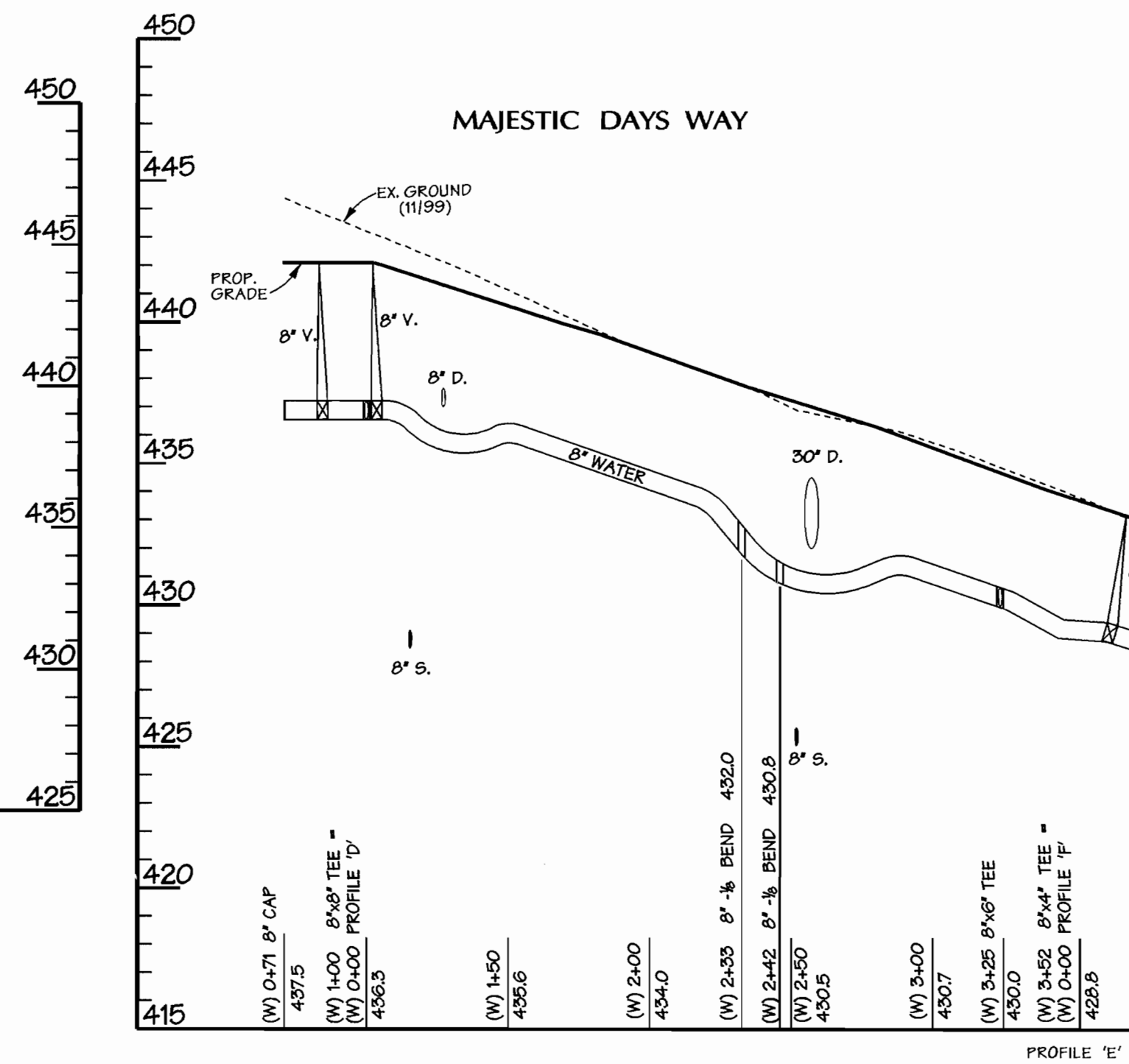
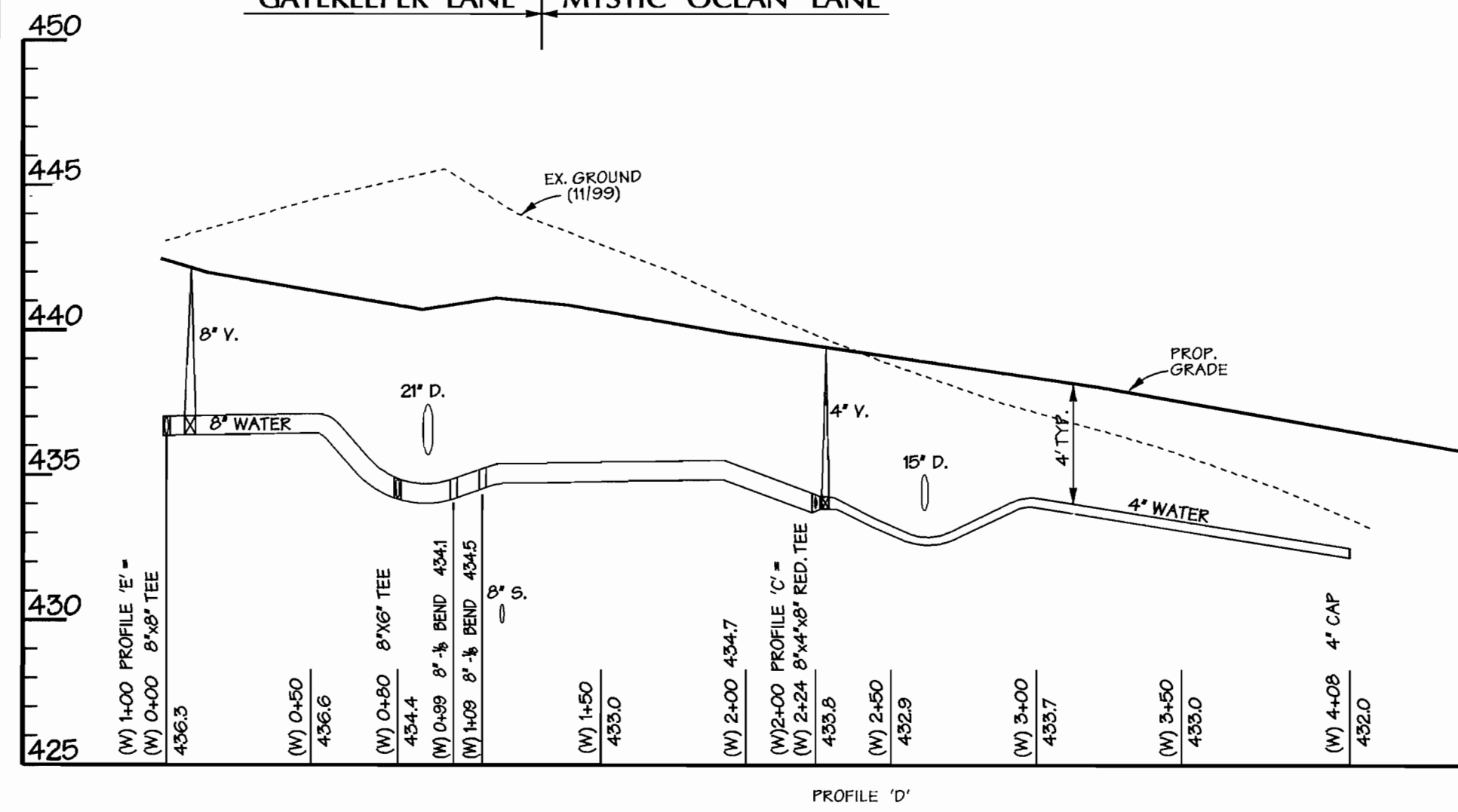
VILLAGE OF RIVER HILL
SECTION 4, AREA 1
TAX MAP 35, LOT A-4
5th ELECTION DISTRICT OF HOWARD COUNTY, MARYLAND
CONTRACT NO. 34-3889-D

SCALE: As Shown
SHEET 1 of 3

PUBLIC WATER & UTILITY ESMT.
GREAT STAR DRIVE PERFECT CALM COURT



GATEKEEPER LANE MYSTIC OCEAN LANE



SEWER STRUCTURE TABLE

QTY.	LOCATION
S 12	314 L.F. UPSTREAM FROM MH 427
S 12A	N 561784.24 E 1331203.45
S 12B	N 561754.72 E 1331123.40

7th Nov 16 17:25:58 2000 14000050005W2

DEPARTMENT OF PUBLIC WORKS
HOWARD COUNTY, MARYLAND
Robert Beaman 11-20-00
CHIEF - BUREAU OF UTILITIES - DATE

DEPARTMENT OF PLANNING & ZONING
HOWARD COUNTY, MARYLAND
William J. ...
CHIEF - DEVELOPMENT ENGINEERING DIVISION - DATE

DMW
Daft-McCune-Walker, Inc.
A Team of Land Planners, Landscape Architects, Golf Course Architects, Engineers, Surveyors & Environmental Professionals
200 East Pennsylvania Avenue
Towson, Maryland 21286
(410) 296-3333
Fax 296-4706



DESIGN BY: RLH
DRAWN BY: KDE/MSS
CHECKED BY: RLH
DATE: 11/16/00
BY NO. REVISION DATE

600 SCALE MAP NO. 35 BLOCK NO. 1

VILLAGE OF RIVER HILL
SECTION 4, AREA 1
TAX MAP 35, LOT A-4
5th ELECTION DISTRICT OF HOWARD COUNTY, MARYLAND
CONTRACT NO. 94-3889-D

SCALE:
HORZ. 1"=50'
VERT. 1"=5'
SHEET
3 of 3