

**GENERAL NOTES**

- Approximate location of existing mains are shown. The contractor shall take all necessary precautions to protect existing mains and services and maintain uninterrupted supply. Any damage incurred shall be repaired immediately to the satisfaction of the Engineer at the Contractor's expense.
- All horizontal controls are based on Maryland State Coordinates.
- All vertical controls are based on U.S.G.S. data.
- All pipe elevations shown are invert elevations.
- Clear all utilities by a minimum of 6". Clear all poles by 2' - 0" minimum or tunnel as required. The owner has contacted the utility companies and has made arrangements for bracing of poles as shown on the drawings. In the event the contractor's work requires the bracing of additional poles, any cost incurred by the owner for bracing of additional poles or damages shall be deducted from money owed the contractor. The contractor shall coordinate with the utility companies to schedule the bracing of the poles.
- For details not shown on the drawings, and for materials and construction methods use Howard County Design Manual, Volume IV, Standard Specifications and Detail for Construction (Latest Edition). The contractor shall have a copy of Volume IV on the job.
- Where test pits have been made on existing utilities, they are noted by the symbol at the location of the test pit. A note or notes containing the results of the test pit or pits is included on the drawings. Existing utilities in the vicinity of the proposed work for which test pits have not been dug shall be located by the contractor two weeks in advance of construction operations at his own expense.
- Contractor shall notify the following utility companies or agencies at least five (5) working days before starting work shown on these plans:  

BGE Contractor Services	410-850-4620
BGE Under Ground Damage Control	410-291-4607
Miss Utility	1-800-257-7777
Colonial Pipeline Co.	410-549-4120
Howard County Department of Public Works Bureau of Utilities	410-313-4900
Bell Atlantic	1-800-446-5266
- Trees and shrubs are to be protected from damage to maximum extent. Trees and shrubs located within the construction strip are not to be removed or damaged by the contractor.
- Contractor shall remove trees, stumps and roots along line of excavation. Payment for such removal shall be included in the unit price bid for construction of the main.
- Water Notes (see below).
- The contractor shall notify the Bureau of Highways, Howard County, at (410) 313-2450 at least five (5) working days before any open cut of any County road or boring/jacking operation in County roads for laying water/sewer mains or house connections. The approval of these drawings will constitute compliance with DPW requirements per Section 18.114 (a) of the Howard County Code.

**WATER NOTES**

- Water lines constructed by this plan are to serve one fire hydrant and one sprinkler connection. No new domestic water connection or meter will be added to the building.
- All water mains to be D.I.P. Class 52 unless otherwise noted.
- Tops of all water mains to have a minimum of 3'-1/2' cover unless otherwise noted.
- Valves adjacent to tees shall be strapped to tees.
- All fittings shall be buttressed or anchored with concrete in accordance with the Standard Details unless otherwise provided for on the drawings.
- Fire hydrants shall be set to the bury line elevations shown on the drawings. All fire hydrants shall be restrained and buttressed with concrete in accordance with the Standard Details. Soil around the fire hydrant shall be compacted in accordance with Section 1000 and 1005 of the Standard Specifications.
- The contractor shall not operate any water main valves on the existing water system.
- All D.I.P. fittings shall be in accordance with A.W.W.A. Specification C-153 Ductile Iron Compact Fittings, 3 inch through 12 inch for Water and Other Liquids.

REVIEWED FOR NATURAL RESOURCE CONSERVATION SERVICE AND MEETS TECHNICAL REQUIREMENT

*Chief Simmons* 8/2/00  
 SIGNATURE DATE

THIS DEVELOPMENT PLAN IS APPROVED FOR SOIL EROSION AND SEDIMENT CONTROL BY THE HOWARD COUNTY CONSERVATION DISTRICT.

*John P. Roberts* 8/2/00  
 HOWARD CO. S.C.D. DATE

DEPARTMENT OF PUBLIC WORKS  
 HOWARD COUNTY, MARYLAND  
*Robert W. Berman* 8-2-00  
 CHIEF, BUREAU OF UTILITIES DATE

DEPARTMENT OF PLANNING & ZONING  
 HOWARD COUNTY, MARYLAND  
*Carl D. ...* 8/2/00  
 CHIEF, DEVELOPMENT ENGINEERING DIVISION DATE

ENGINEERING-PLANNING-EARTH SCIENCES-SURVEYING  
 GREENHORNE & O'MARA, INC.  
 9001 EDMONSTON ROAD, GREENBELT, MARYLAND 20770  
 (301) 982-2800 © 1998 Dale Hanson

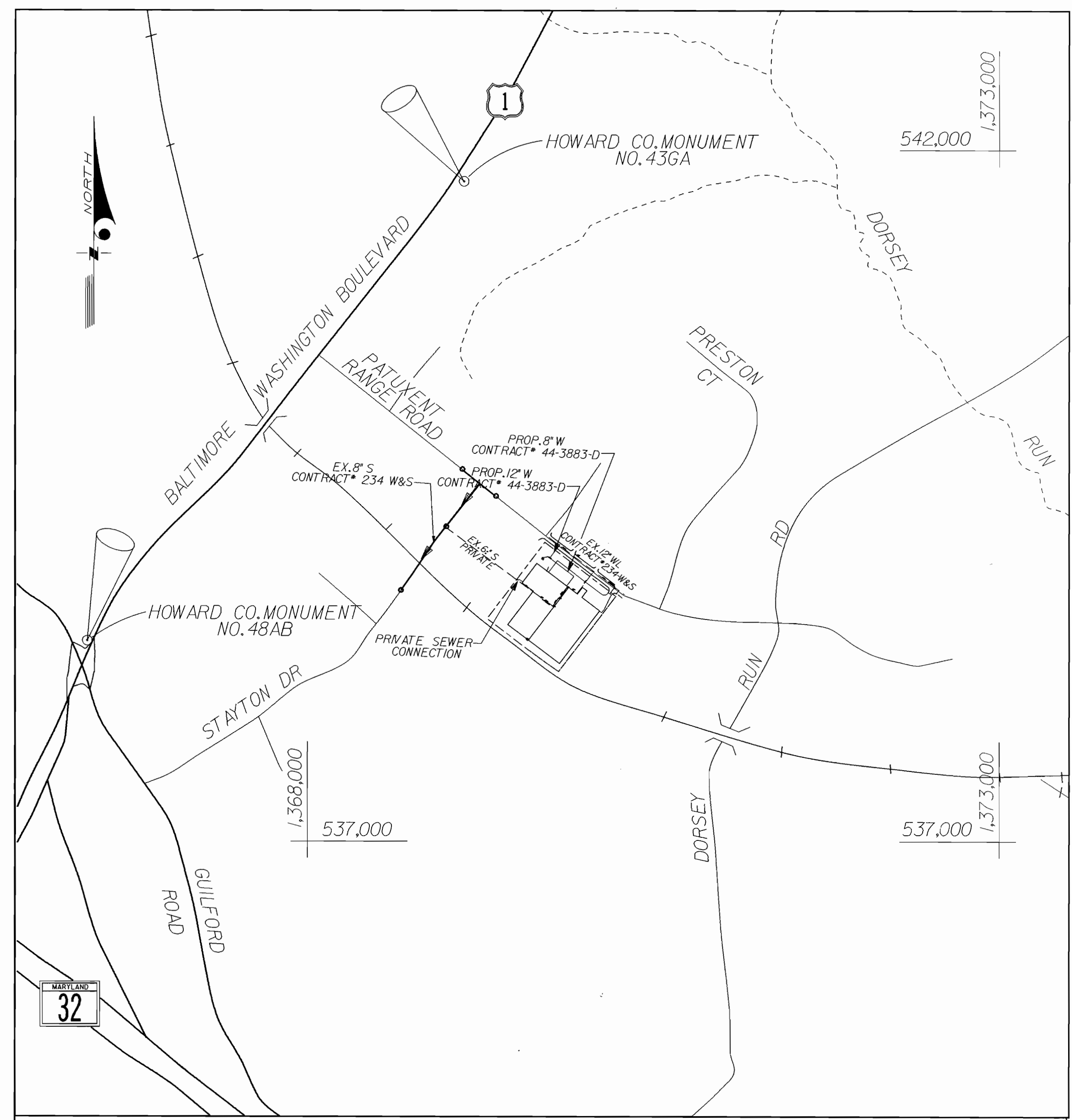
D. HANSON  
 REGISTERED PROFESSIONAL ENGINEER  
 MARYLAND  
 81-00

DES:	BY:	NO.	REVISION	DATE
NDW				
NDW				
AKA				
DATE:				

TITLE SHEET  
 600' SCALE MAP NO. 48 BLOCK NO. \_\_\_\_\_

IRON MOUNTAIN STORAGE FACILITY  
 BUILDING ADDITION  
 BALTIMORE-WASHINGTON INDUSTRIAL PARK  
 BLOCK D, PARCEL C, PLAT #4484  
 WATER EXTENSION PLAN  
 CONTRACT NO. 44-3883-D  
 2nd ELECTION DISTRICT  
 HOWARD COUNTY, MARYLAND

SCALE AS SHOWN  
 SHEET 1 OF 2



**VICINITY MAP**  
 SCALE: 1"=600'  
 TYPE OF BUILDING: 107,400 SF STORAGE  
 NO. OF LOTS: 1  
 NO. OF WATER CONNECTIONS: SPRINKLER -1  
 NO. OF SEWER HOUSE CONNECTIONS: RELOCATE -1  
 DRAINAGE AREA: \_\_\_\_\_  
 WATER CODE: B02  
 SEWER CODE: 4202600  
 CONTRACT NO. 44-3883-D  
 WATER CODE: B-02  
 SEWER CODE: 4202600  
 TEST GRADIENT: 550

**BENCHMARK DATA**  
 43GA N541797.061, E1369159.490 ELEV. 220.114  
 48AB N538384.463, E1366415.854 ELEV. 226.367

**NOTE:**  
 1. FOR ON-SITE BENCHMARKS SEE SHEET 2 OF 2  
 2. REFER TO HOWARD COUNTY LOCATION SKETCH FOR EXACT LOCATION

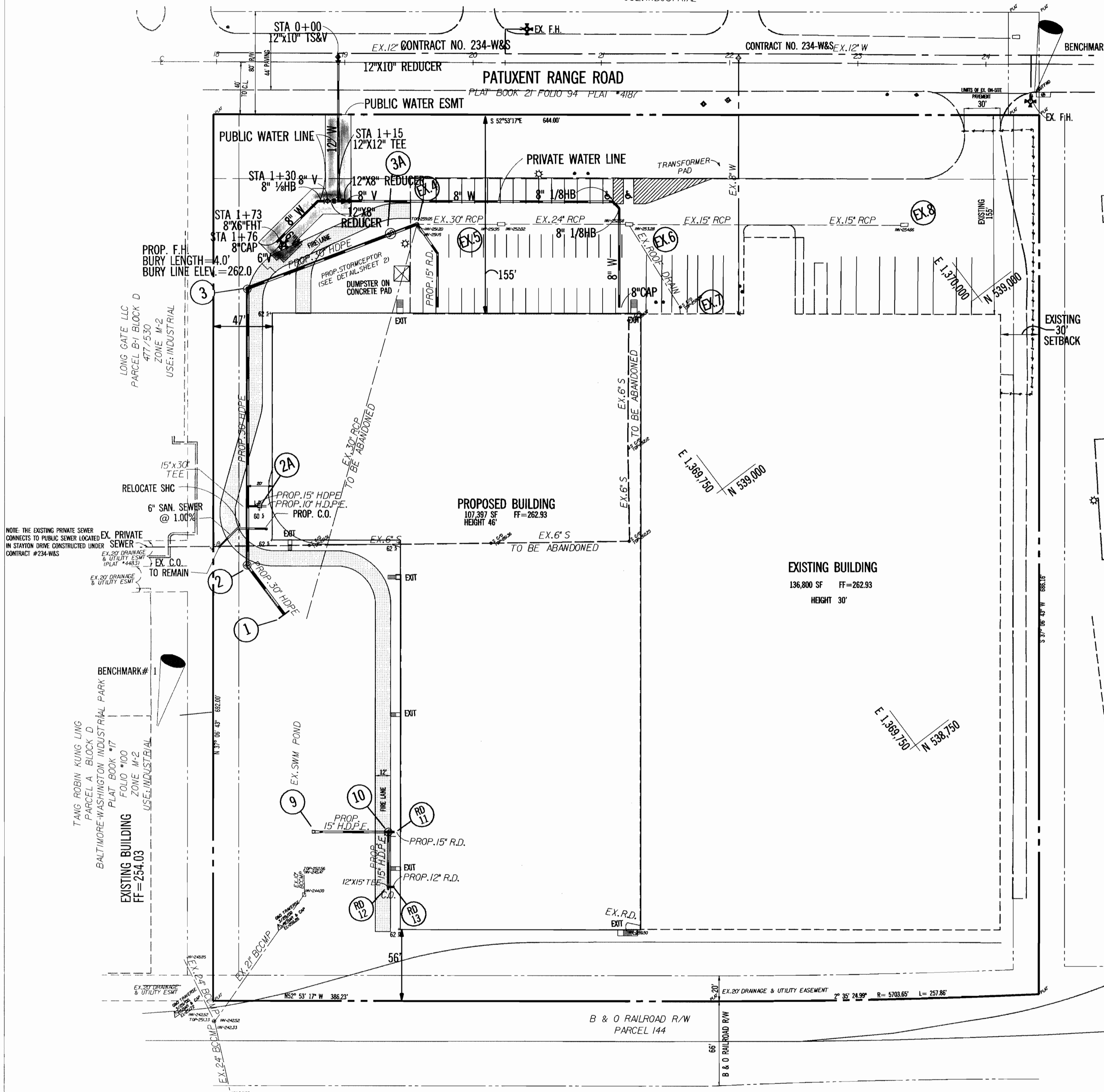
SEDIMENT CONTROL MEASURES SHALL BE IMPLEMENTED IN ACCORDANCE WITH SECTION 219 OF THE HOWARD COUNTY DESIGN MANUAL VOLUME IV, SPECIFICATIONS AND SITE DEVELOPMENT PLAN SDP-00-126..

INDEX	
SHEET	TITLE
1	TITLE SHEET
2	PLAN & PROFILES

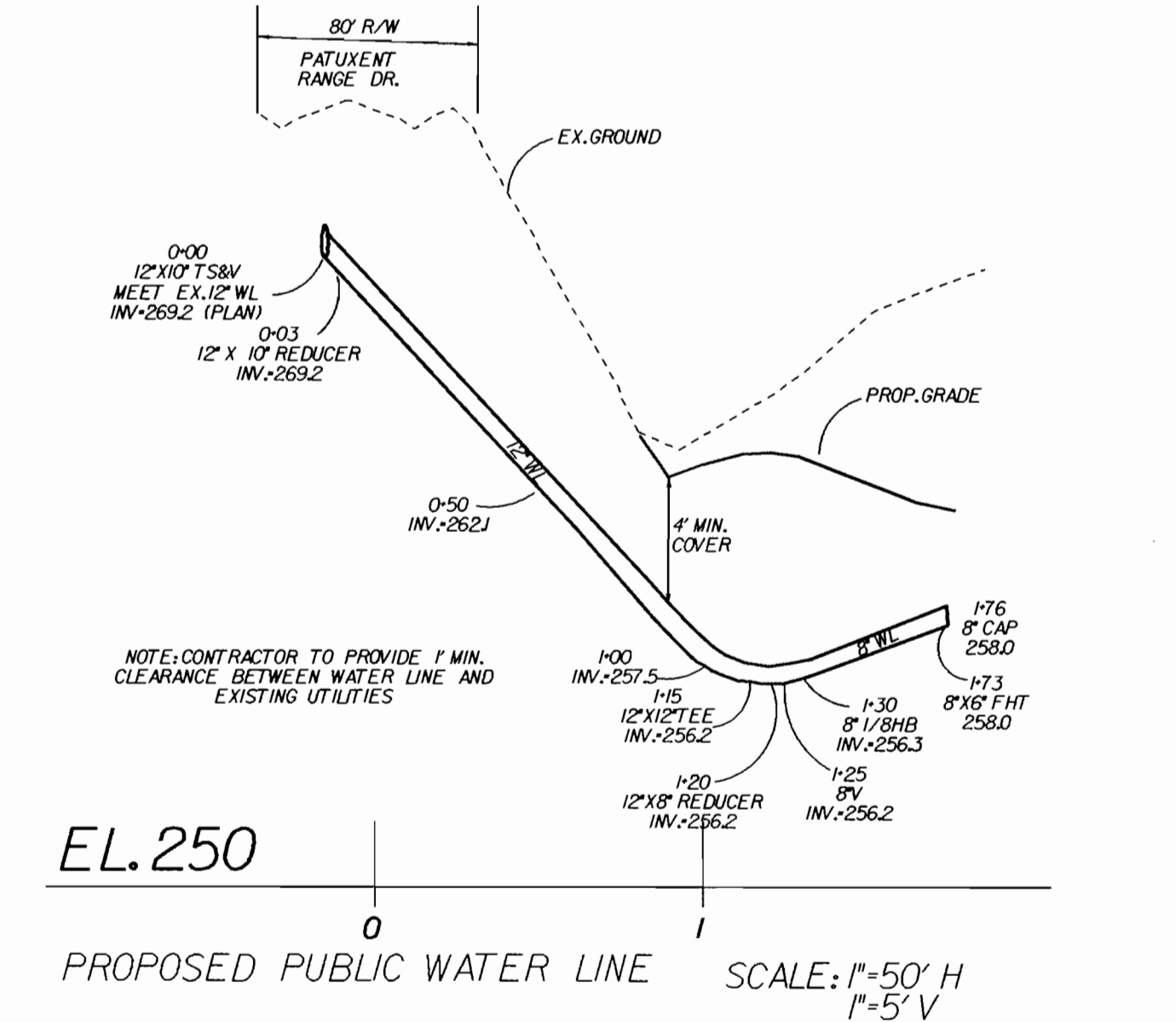
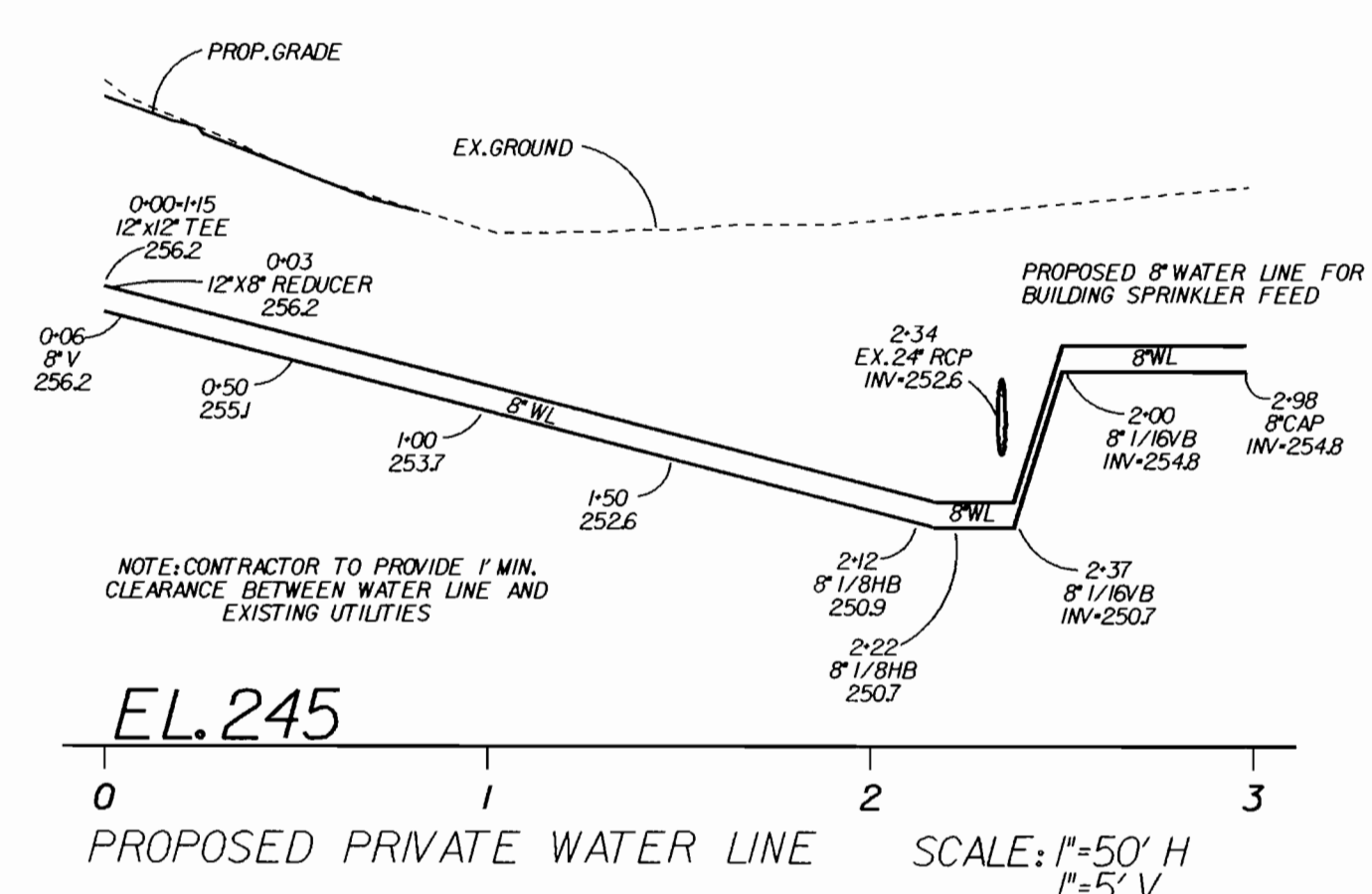
SDP # 00-126 SUBMITTED 05/05/00  
 REF: SDP # 80-86 APPROVED 1/24/80

QUANTITIES				
ITEMS	QUANTITIES ESTIMATED	AS-BUILT		
		QUANTITIES	TYPE	MANUFACTURER/SUPPLIER
<b>PUBLIC WATER</b>				
6" DUCTILE IRON FIRE HYDRANT LEAD	5 LF			
8" DUCTILE IRON WATER LINE	61 LF			
12" DUCTILE IRON WATER LINE	115 LF			
12"x12" TEE	1			
8"x6" FIRE HYDRANT TEE	1			
12"x10" REDUCER	1			
12"x8" REDUCER	2			
8" VALVE	2			
6" FIRE HYDRANT VALVE	1			
4" FIRE HYDRANT	1			
8" HB	1			
8" CAP	1			
12"x10" TS&V	1			
<b>PRIVATE WATER</b>				
8" DUCTILE IRON WATER LINE	298 LF			
8" 1/8" HB	2			
8" CAP	1			
NAME OF UTILITY CONTRACTOR: _____				
SURVEY AND DRAFTING DIVISION AS-BUILT DATE: _____				

LIBERTY PROPERTY LIMITED PARTNERSHIP  
 PARCEL F-1 BLOCK E  
 3328/78  
 ZONE M-2  
 USE: INDUSTRIAL



ON-SITE BENCHMARKS  
 BENCHMARK # 1 - NE CORNER OF CONCRETE PAD, ELEV.=253.60'  
 BENCHMARK # 2 - G&O TRAVERS #105, X-CUT ON CURB, ELEV.= 262.06'  
 BENCHMARK # 3 - G&O TRAVERSE REBAR & CAP, ELEV. = 236.47'



SCALE: 1"=50'

SDP # 00-126  
 REF: SDP # 80-86 APPROVED 1/24/80

DEPARTMENT OF PUBLIC WORKS HOWARD COUNTY, MARYLAND  <i>Robert Bainger</i> 8-2-00 CHIEF, BUREAU OF UTILITIES DATE	DEPARTMENT OF PLANNING & ZONING HOWARD COUNTY, MARYLAND  <i>Chris Danner</i> 8/2/00 CHIEF, DEVELOPMENT ENGINEERING DIVISION DATE	 ENGINEERING-PLANNING-EARTH SCIENCES-SURVEYING GREENHORNE & O'MARA, INC. 3001 EDMONSTON ROAD, GREENBELT, MARYLAND 20770 (301) 982-2800 ROYAL LEE - ASHLEY - FREEMAN - MECHANICAL - ST. PETERSBURG	 PROFESSIONAL ENGINEER 8-1-00	DES: NDW BY: NDW NO.: REVISION: DATE: CHK: AKA DATE:	WATER PLAN AND PROFILES NUMBER OF LOTS: 1 600' SCALE MAP NO. 48 BLOCK NO.	IRON MOUNTAIN STORAGE FACILITY BUILDING ADDITION BALTIMORE-WASHINGTON INDUSTRIAL PARK BLOCK D, PARCEL C, PLATT #4484 WATER EXTENSION PLAN CONTRACT NO. 2nd ELECTION DISTRICT HOWARD COUNTY, MARYLAND	SCALE AS SHOWN SHEET 2 OF 2
--	--	--	-------------------------------------	--	---	--	--------------------------------

**GENERAL NOTES**

- Approximate location of existing mains are shown. The contractor shall take all necessary precautions to protect existing mains and services and maintain uninterrupted supply. Any damage incurred shall be repaired immediately to the satisfaction of the Engineer at the Contractor's expense.
- All horizontal controls are based on Maryland State Coordinates.
- All vertical controls are based on U.S.G.S. data.
- All pipe elevations shown are invert elevations.
- Clear all utilities by a minimum of 6". Clear all poles by 2' - 0" minimum or tunnel as required. The owner has contacted the utility companies and has made arrangements for bracing of poles as shown on the drawings. In the event the contractor's work requires the bracing of additional poles, any cost incurred by the owner for bracing of additional poles or damages shall be deducted from money owed the contractor. The contractor shall coordinate with the utility companies to schedule the bracing of the poles.
- For details not shown on the drawings, and for materials and construction methods use Howard County Design Manual, Volume IV, Standard Specifications and Detail for Construction (Latest Edition). The contractor shall have a copy of Volume IV on the job.
- Where test pits have been made on existing utilities, they are noted by the symbol at the location of the test pit. A note or notes containing the results of the test pit or pits is included on the drawings. Existing utilities in the vicinity of the proposed work for which test pits have not been dug shall be located by the contractor two weeks in advance of construction operations at his own expense.
- Contractor shall notify the following utility companies or agencies at least five (5) working days before starting work shown on these plans:  
 BGE Contractor Services 410-850-4620  
 BGE Under Ground Damage Control 410-291-4607  
 Miss Utility 1-800-257-7777  
 Colonial Pipeline Co. 410-549-4120  
 Howard County Department of Public Works Bureau of Utilities 410-313-4900  
 Bell Atlantic 1-800-446-5266
- Trees and shrubs are to be protected from damage to maximum extent. Trees and shrubs located within the construction strip are not to be removed or damaged by the contractor.
- Contractor shall remove trees, stumps and roots along line of excavation. Payment for such removal shall be included in the unit price bid for construction of the main.
- Water Notes (see below).
- The contractor shall notify the Bureau of Highways, Howard County, at (410) 313-2450 at least five (5) working days before any open cut of any County road or boring/jacking operation in County roads for laying water/sewer mains or house connections. The approval of these drawings will constitute compliance with DPW requirements per Section 18.114 (a) of the Howard County Code.

**WATER NOTES**

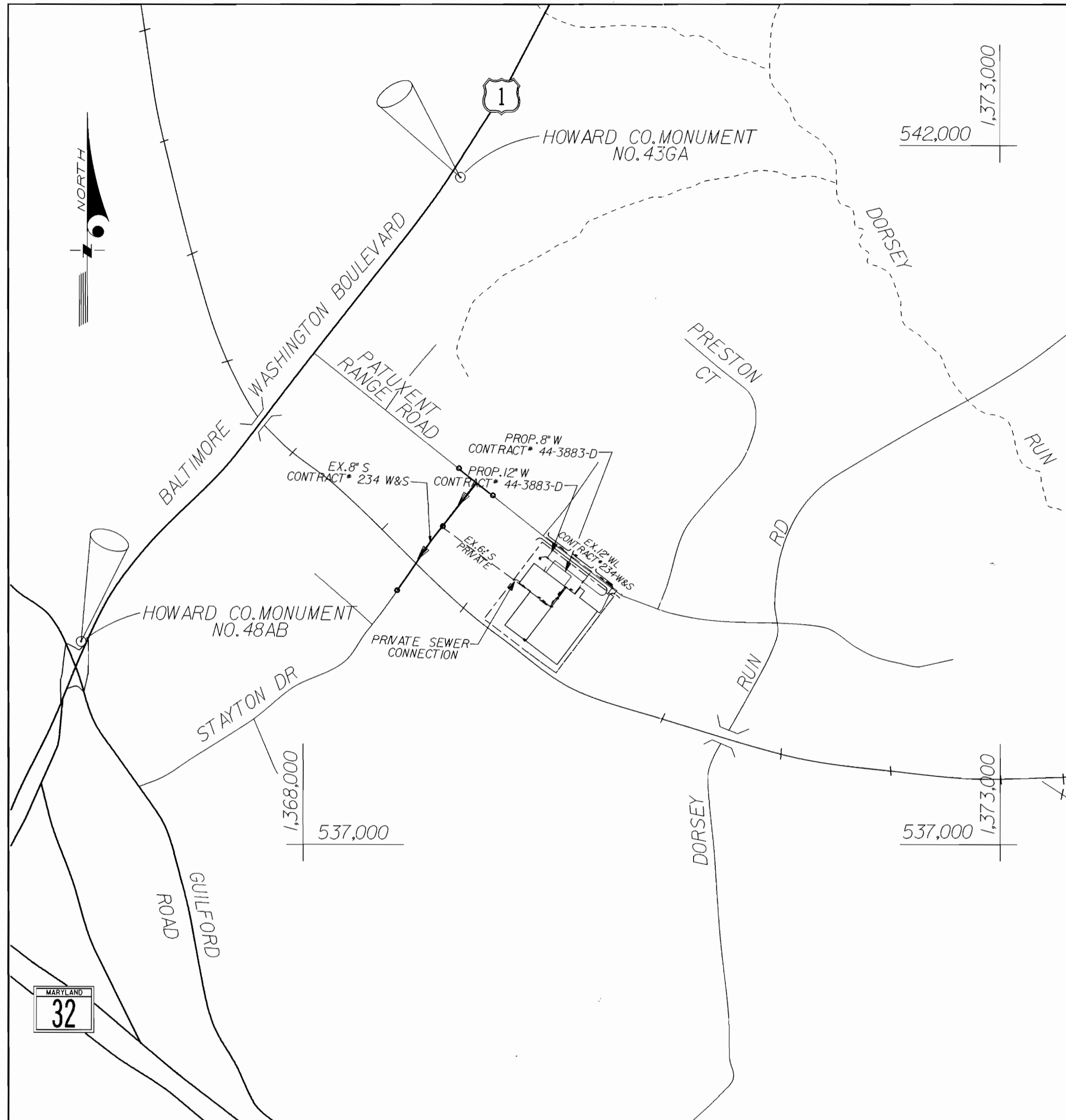
- Water lines constructed by this plan are to serve one fire hydrant and one sprinkler connection. No new domestic water connection or meter will be added to the building.
- All water mains to be D.I.P. Class 52 unless otherwise noted.
- Tops of all water mains to have a minimum of 3-1/2' cover unless otherwise noted.
- Valves adjacent to tees shall be strapped to tees.
- All fittings shall be buttressed or anchored with concrete in accordance with the Standard Details unless otherwise provided for on the drawings.
- Fire hydrants shall be set to the bury line elevations shown on the drawings. All fire hydrants shall be restrained and buttressed with concrete in accordance with the Standard Details. Soil around the fire hydrant shall be compacted in accordance with Section 1000 and 1005 of the Standard Specifications.
- The contractor shall not operate any water main valves on the existing water system.
- All D.I.P. fittings shall be in accordance with A.W.W.A. Specification C-153 Ductile Iron Compact Fittings, 3 Inch through 12 Inch for Water and Other Liquids.

REVIEWED FOR NATURAL RESOURCE CONSERVATION SERVICE AND MEETS TECHNICAL REQUIREMENT

*Chief Simmons* 8/2/00  
 SIGNATURE DATE

THIS DEVELOPMENT PLAN IS APPROVED FOR SOIL EROSION AND SEDIMENT CONTROL BY THE HOWARD COUNTY CONSERVATION DISTRICT.

*John Robertson* 8/2/00  
 HOWARD CO. S.C.D. DATE



**VICINITY MAP**  
 SCALE: 1"=600'

TYPE OF BUILDING: 107,400 SF STORAGE  
 NO. OF LOTS: 1  
 NO. OF WATER CONNECTIONS: SPRINKLER - 1  
 NO. OF SEWER HOUSE CONNECTIONS: RELOCATE - 1  
 DRAINAGE AREA: \_\_\_\_\_  
 WATER CODE: B02  
 SEWER CODE: 4202600

WATER CODE: B-02  
 SEWER CODE: 4202600  
 TEST GRADIENT: 550

**CONTRACT NO. 44-3883-D**

**BENCHMARK DATA**

43GA	N541797.061, E1369159.490	ELEV. 220.114
48AB	N538384.463, E1366415.854	ELEV. 226.367

NOTE:  
 1. FOR ON-SITE BENCHMARKS SEE SHEET 2 OF 2  
 2. REFER TO HOWARD COUNTY LOCATION SKETCH FOR EXACT LOCATION

SEDIMENT CONTROL MEASURES SHALL BE IMPLEMENTED IN ACCORDANCE WITH SECTION 219 OF THE HOWARD COUNTY DESIGN MANUAL VOLUME IV, SPECIFICATIONS AND SITE DEVELOPMENT PLAN SDP-00-126..

**INDEX**

SHEET	TITLE
1	TITLE SHEET
2	PLAN & PROFILES

SDP # 00-126 SUBMITTED 05/05/00  
 REF: SDP # 80-86 APPROVED 1/24/80

**QUANTITIES**

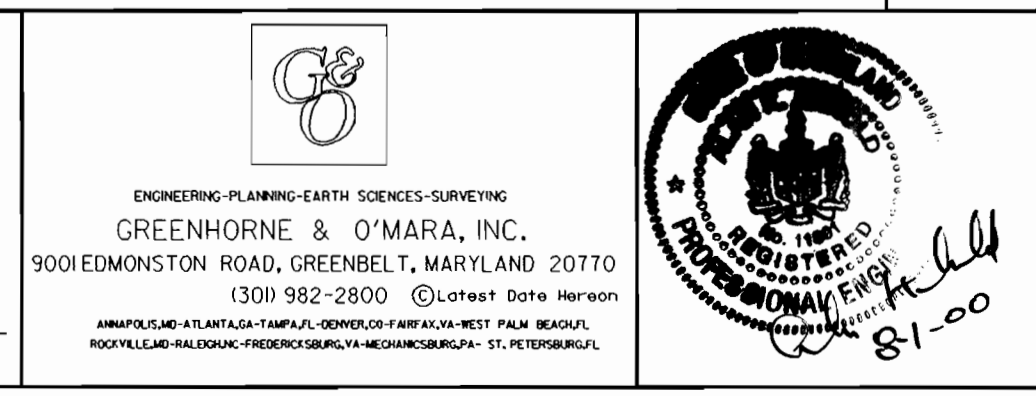
ITEMS	QUANTITIES ESTIMATED	AS-BUILT		
		QUANTITIES	TYPE	MANUFACTURER/SUPPLIER
<b>PUBLIC WATER</b>				
6" DUCTILE IRON FIRE HYDRANT LEAD	5 LF	5 LF	D.I.P. CL 52	GRIFFIN/BROS.
8" DUCTILE IRON WATER LINE	61 LF	61 LF	D.I.P. CL 52	GRIFFIN/BROS.
12" DUCTILE IRON WATER LINE	115 LF	115 LF	D.I.P. CL 52	" "
12"X12" TEE	1	1	D.I.P.	" "
8"X6" FIRE HYDRANT TEE	1	1	D.I.P.	MUELLER/BROS.
12"X10" REDUCER	1	1	D.I.P.	GRIFFIN/BROS.
12"X8" REDUCER	2	2	D.I.P.	" "
8" VALVE	2	2	D.I.P. Reg. GAE	MUELLER/BROS. M.J.T.
6" FIRE HYDRANT VALVE	1	1	" "	" "
4" FIRE HYDRANT	1	1	D.I.P.	" "
8" 1/8" HB	1	1	D.I.P.	GRIFFIN/BROS.
8" CAP	1	1	D.I.P.	" "
12"X10" TS&V	1	1	STAINLESS	" "
<b>PRIVATE WATER</b>				
8" DUCTILE IRON WATER LINE	298 LF	298 LF	D.I.P. CL 52	GRIFFIN/BROS.
8" 1/8" HB	2	2	D.I.P.	" "
8" CAP	1	1	D.I.P.	" "
NAME OF UTILITY CONTRACTOR: ICCOBONI SITE SPEC. INC.				
SURVEY AND DRAFTING DIVISION AS-BUILT DATE: 1-2-01				

DEPARTMENT OF PUBLIC WORKS  
 HOWARD COUNTY, MARYLAND

*Robert M. Beaman* 8-2-00  
 CHIEF, BUREAU OF UTILITIES DATE

DEPARTMENT OF PLANNING & ZONING  
 HOWARD COUNTY, MARYLAND

*Carl Dammann* 8/2/00  
 CHIEF, DEVELOPMENT ENGINEERING DIVISION DATE



DES:	BY:	NO.	REVISION	DATE
NDW				
NDW				
AKA				
DATE:	KLI	1	AS BUILT CONDITIONS ADDED TO PLAN	05/12/01

TITLE SHEET

600' SCALE MAP NO. 48 BLOCK NO. \_\_\_\_\_

IRON MOUNTAIN STORAGE FACILITY  
 BUILDING ADDITION  
 BALTIMORE-WASHINGTON INDUSTRIAL PARK  
 BLOCK D, PARCEL C, PLAT #4484

WATER EXTENSION PLAN  
 CONTRACT NO. 44-3883-D

2nd ELECTION DISTRICT HOWARD COUNTY, MARYLAND

SCALE AS SHOWN

SHEET 1 OF 2

