

**GENERAL NOTES**

**PART I - GENERAL**

- Approximate location of existing mains are shown. The contractor shall take all necessary precautions to protect existing mains and services and maintain uninterrupted supply. Any damage incurred shall be repaired immediately to the satisfaction of the Engineer at the Contractor's expense.
- All horizontal controls are based on Maryland State Coordinates. [North American Datum of 1983 (NAD '83)].
- All vertical controls are based on U.S.G.S. data.
- All pipe elevations shown are invert elevations.
- Clear all utilities by a minimum of 6". Clear all poles by 2'-0" minimum or tunnel as required. The owner has contacted the utility companies and has made arrangements for bracing of poles as shown on the drawings. In the event that the contractor's work requires the bracing of additional poles, any cost incurred by the owner for bracing of additional poles or damages shall be deducted from money owed the contractor. The contractor shall coordinate with the utility companies to schedule the bracing of the poles.
- For details not shown on the drawings, and for materials and construction methods, use Howard County Design Manual, Volume IV, Standard Specifications and Details for Construction (Latest Edition). The contractor shall have a copy of Volume IV on the job.
- Where test pits have been made on existing utilities, they are noted by the symbol at the location of the test pit. A note or notes containing the results of the test pit or pits is included on the drawings. Existing utilities in the vicinity of the proposed work for which test pits have not been dug shall be located by the contractor two weeks in advance of construction operations at his own expense.
- Contractor shall notify the following utility companies or agencies at least five working days before starting work shown on these plans:
 

State Highway Administration	410-531-5533
BC&E Co. Contractor Services	410-850-4620
BC&E Co. Under Ground Damage Control	410-291-4607
Miss Utility	1-800-257-7777
Colonial Pipeline Co.	410-549-4120
Howard County Department of Public Works	410-313-4900
Bureau of Utilities	1-800-446-5266
Bell Atlantic	
- Trees and shrubs are to be protected from damage to maximum extent. Trees and shrubs located within the construction strip are not to be removed or damaged by the contractor.
- Contractor shall remove trees, stumps and roots along line of excavation. Payment for such removal shall be included in the unit price bid for construction of the main.
- The contractor shall notify the Bureau of Highways, Howard County, at (410) 313-2450 at least five working days before any open cut of any County road or boring/jacking operation in County roads for laying water/sewer mains or house connections. The approval of these drawings will constitute compliance with DPW requirements per Section 18.114(a) of the Howard County Code.

**PART II - WATER**

- All water mains to be D.I.P. Class 52 unless otherwise noted.
- Tops of all water mains to have a minimum of 3'-1/2" cover unless otherwise noted.
- Valves adjacent to tees shall be strapped to tees.
- All fittings shall be buttressed or anchored with concrete in accordance with the Standard Details unless otherwise provided for on the drawings.
- Fire hydrants shall be set to the bury line elevations shown of the drawings. All fire hydrants shall be restrained and buttressed with concrete in accordance with Standard Details. Soil around the fire hydrant shall be compacted in accordance with Sections 1000 and 1005 of the Standard Specifications.
- The contractor shall not operate any water main valves on the existing water system.
- All water house connections shall be for inside meter setting unless otherwise noted on plans or in specifications.
- For sprinkler system for all townhomes or multi-family dwelling units shall have a minimum of 1' connection with a 3/4" meter.

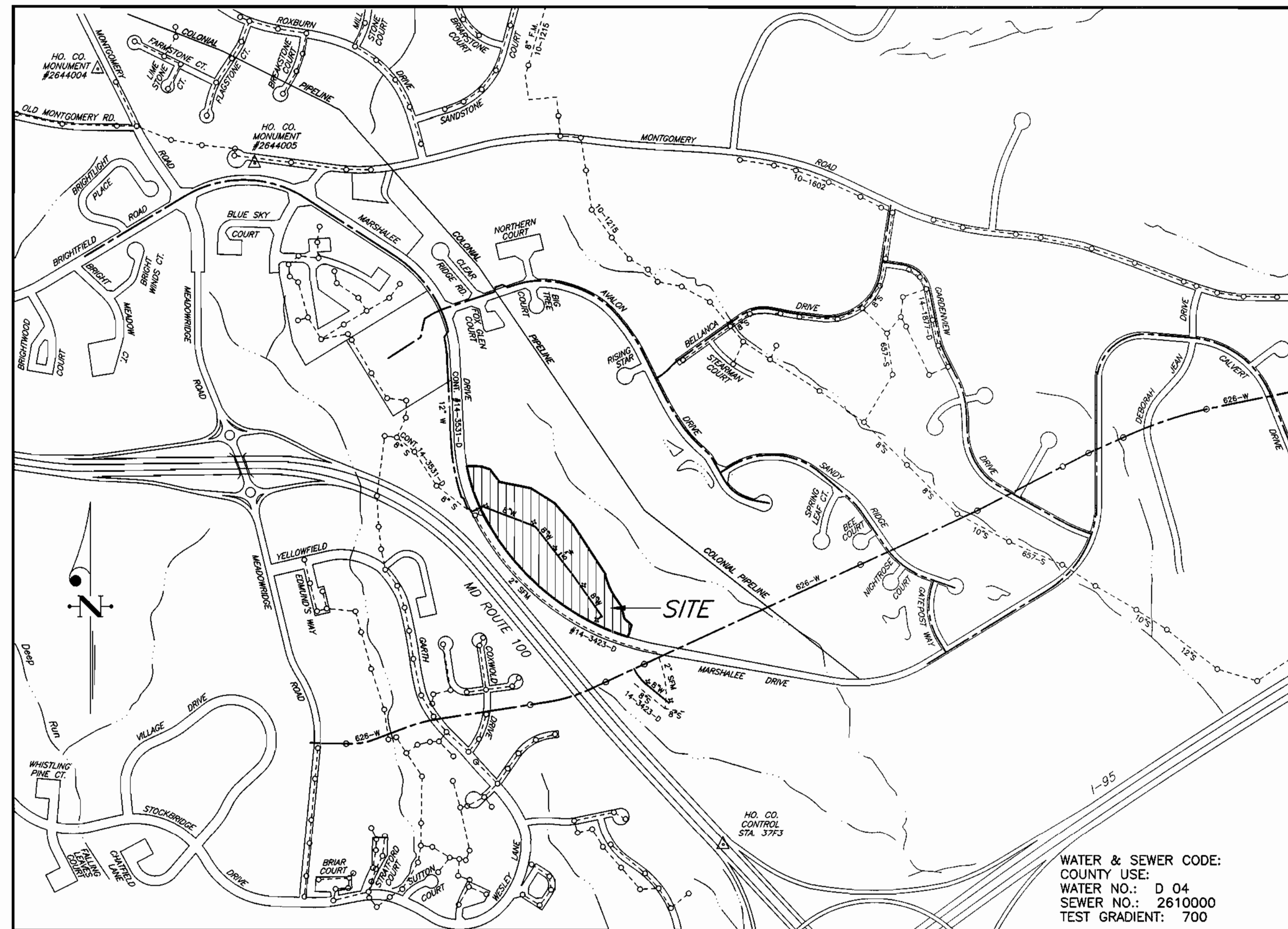
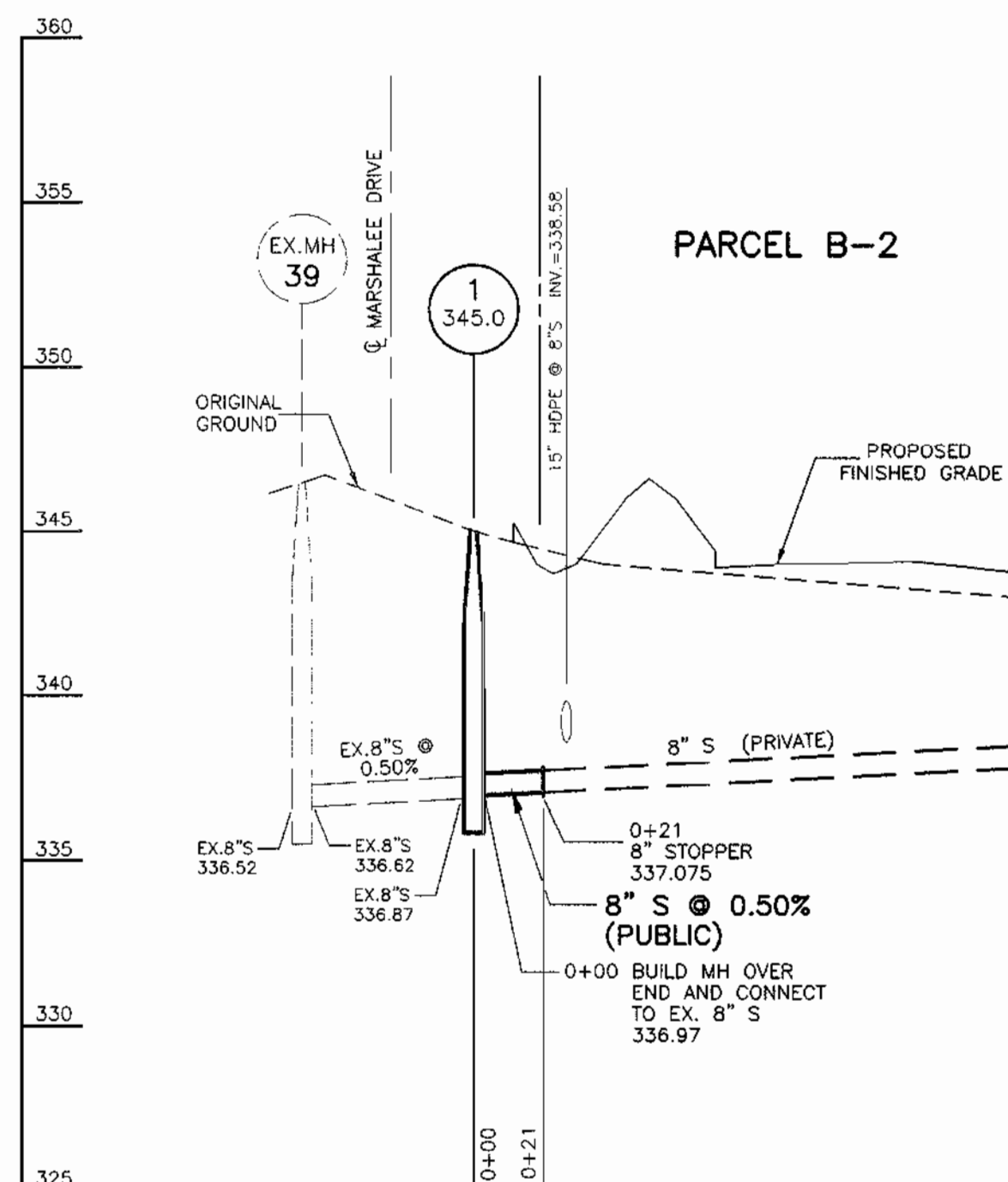
**PART III - SEWER**

- All sewer mains shall be DIP or P.V.C. unless otherwise noted.
- All manholes shall be 4'-0" inside diameter unless otherwise noted.
- Force mains shall be D.I.P. only.
- Manholes shown with 12" and 16" walls are for brick manholes only.
- Manholes designated W.T. in plan and profile shall have watertight frame and covers. Standard Detail G5.52. Where watertight manhole frame and cover is used, set top of frame 1" - 6" above finished grade unless otherwise noted on the drawings.
- House(s) with the symbol "C.N.S." indicates that cellar cannot be served.

**QUANTITIES**

ITEMS	QUANTITIES ESTIMATED	AS-BUILT		
		QUANTITIES	TYPE	MANUFACTURER/SUPPLIER
8" S	21 LF			
4' DIA. MH	1 EA.			
6" W	81 LF			
8" W	1,297 LF			
FH & FHV	5 EA.			
8" V	1 EA.			
6" V	1 EA.			
2" WHC	80 LF			
2" V	1 EA.			
4" V	1 EA.			
4" W	20 LF			
NAME OF UTILITY CONTRACTOR:				
SURVEY AND DRAFTING DIVISION AS-BUILT DATE:				

BASELINE	BL STA.	OFFSET BL	W/S STA.	DESCRIPTION
'A'	0+30	19' RT.	0+00	CONNECT TO EX. 12" W 12" X 8" REDUCER
'A'	0+32	38' RT.	0+00	MANHOLE NO. 1
'A'	0+47	53' RT.	0+21	8" STOPPER
'A'	0+67	14' RT.	0+37	8" 1/8 HB
'A'	0+79	23' RT.	0+52	8" X 6" FHT
'A'	0+85	16' RT.	0+52	4.0' FIRE HYDRANT
'A'	5+30	14' RT.	4+04.17	8" W PC (R=287')
'A'	5+32	17' LT.	4+21	6.0' FIRE HYDRANT
'A'	5+44	6' RT.	4+21	8" X 6" FHT
'A'	5+69	6' LT.	4+48.18	8" W PT
'A'	5+71	7' LT.	4+50	8" 1/16 HB
'A'	7+75	7' LT.	6+55	8" X 6" FHT
'A'	7+75	19' LT.	6+55	5.0' FIRE HYDRANT
'A'	8+35	7' LT.	7+14=0+00	8" X 6" TEE
'B'	3+83	5' RT.	0+81=0+10	8" X 6" TEE
'B'	3+83	15' RT.	0+20	4" CAP
'B'	3+83	5' LT.	0+00	4" CAP
'A'	10+13	7' LT.	8+92.41	8" W PC (R=400')
'A'	10+32	6.5' LT.	9+12.11	8" W PT
'A'	11+21	2' LT.	10+01	8" X 6" FHT
'A'	11+22	19' LT.	10+01	6.0' FIRE HYDRANT
'A'	11+77	1' RT.	10+59	8" W @ 18" HDPE
'A'	13+68	36' LT.	12+67	8" X 6" FHT & 8" PLUG
'A'	14+00	18' LT.	12+67	4.5' FIRE HYDRANT



**LOCATION MAP**  
SCALE: 1" = 600'

TYPE OF BUILDING	COMMERCIAL
NO. OF LOTS/PARCELS	1 (PARCEL)
NO. OF WATER HOUSE CONNECTIONS	3
NO. OF SEWER HOUSE CONNECTIONS	1
DRAINAGE AREA	DEEP RUN (PATAPSCO)
TREATMENT PLANT	PATAPSCO WASTEWATER TREATMENT PLANT

**BENCH MARKS**

HOWARD COUNTY MONUMENT #2644004 ELEV. 402.135  
CONCRETE MONUMENT 0.1' BELOW SURFACE, SW CORNER OF INTERSECTION ROUTE 103 AND OLD MONTGOMERY ROAD.

HOWARD COUNTY MONUMENT #2644005 ELEV. 416.981  
CONCRETE MONUMENT 0.2' BELOW SURFACE, SOUTH SIDE OF MONTGOMERY ROAD, EAST OF MEADOWRIDGE ROAD.

**WATER & SEWER CONSTRUCTION PLANS  
LYNDWOOD SQUARE  
PARCEL B-2**

1ST ELECTION DISTRICT HOWARD COUNTY, MARYLAND  
CONTRACT No. 14-3860-D

SEDIMENT CONTROL MEASURES WILL BE IMPLEMENTED IN ACCORDANCE WITH SECTION 219 OF THE SPECIFICATIONS AND WITH SITE DEVELOPMENT PLAN, SDP-00-119, DRAWINGS 9 - 12 OF 15. SEDIMENT AND EROSION CONTROL.

REVIEWED FOR HOWARD SOIL CONSERVATION DISTRICT AND MEETS TECHNICAL REQUIREMENTS.

*Clay Simmon* 8/18/00  
SIGNATURE DATE

U. S. SOIL CONSERVATION SERVICE

THIS DEVELOPMENT PLAN IS APPROVED FOR SOIL EROSION AND SEDIMENT CONTROL BY THE HOWARD SOIL CONSERVATION DISTRICT.

APPROVED: *John K. Robinson* 8/18/00  
HOWARD S. C. D. DATE

DEPARTMENT OF PUBLIC WORKS  
HOWARD COUNTY, MARYLAND

DEPARTMENT OF PLANNING & ZONING  
HOWARD COUNTY, MARYLAND

**CLARK · FINEPROCK & SACKETT, INC.**  
ENGINEERS · PLANNERS · SURVEYORS  
7135 MINSTREL WAY COLUMBIA, MD 21045  
(410) 381-7500 BALT. (301) 621-8100 WASH.



DES:	JTR				
DRN:	LAI				
CHK:	CCM				
DATE:	8-8-00	BY:	NO.	REVISION	DATE

TITLE SHEET

600' SCALE MAP NO. 37 BLOCK NO. 10

LYNDWOOD SQUARE  
PARCEL B-2

1ST ELECTION DISTRICT  
CONTRACT No. 14-3860-D

SCALE:  
AS SHOWN

SHEET  
1 OF 2

TIMBERS AT TROY PUBLIC GOLF COURSE  
HOWARD COUNTY, MARYLAND  
SDP-93-75

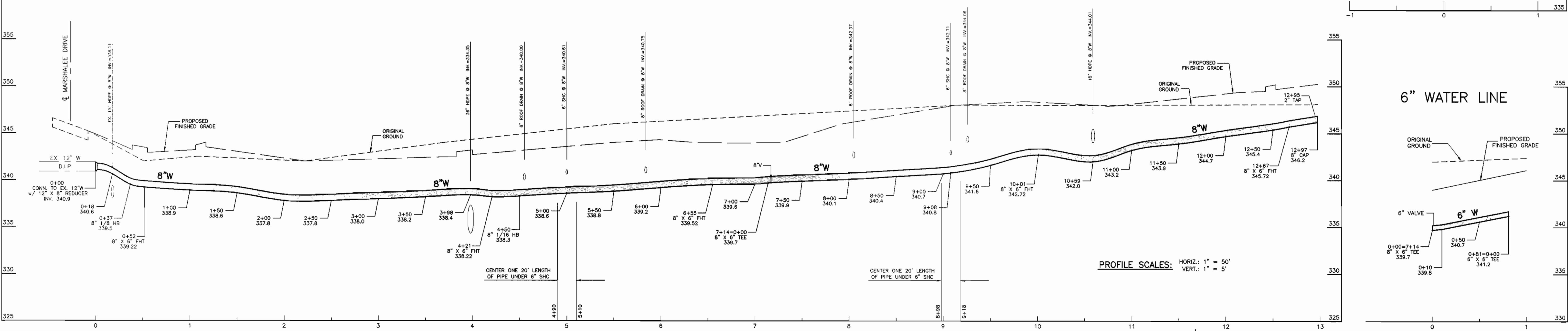
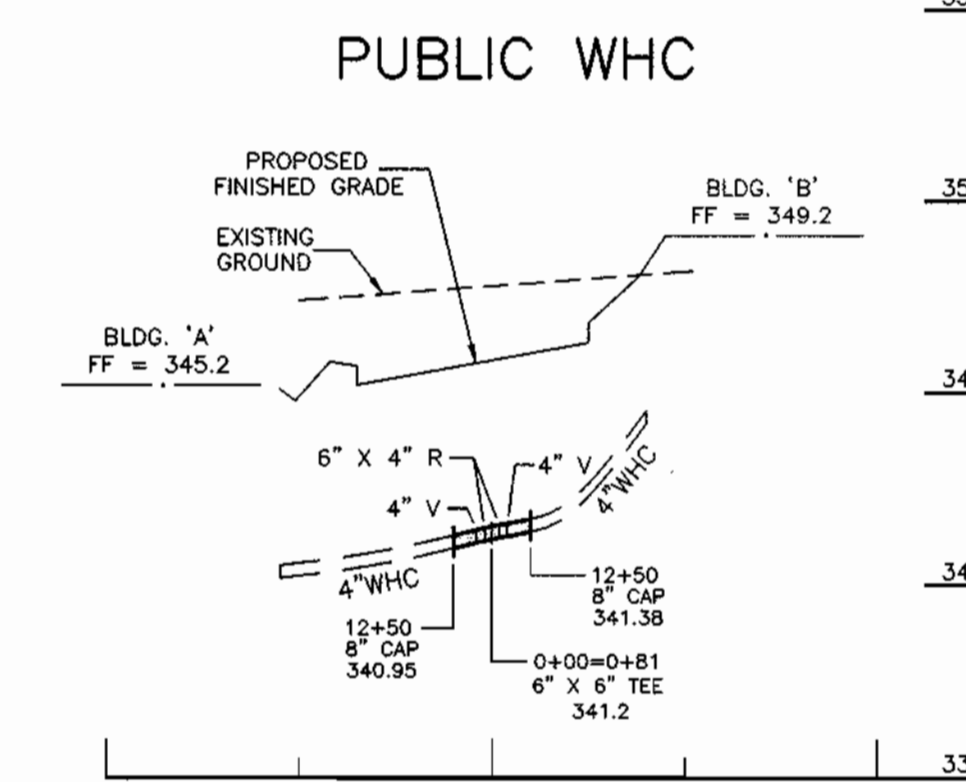
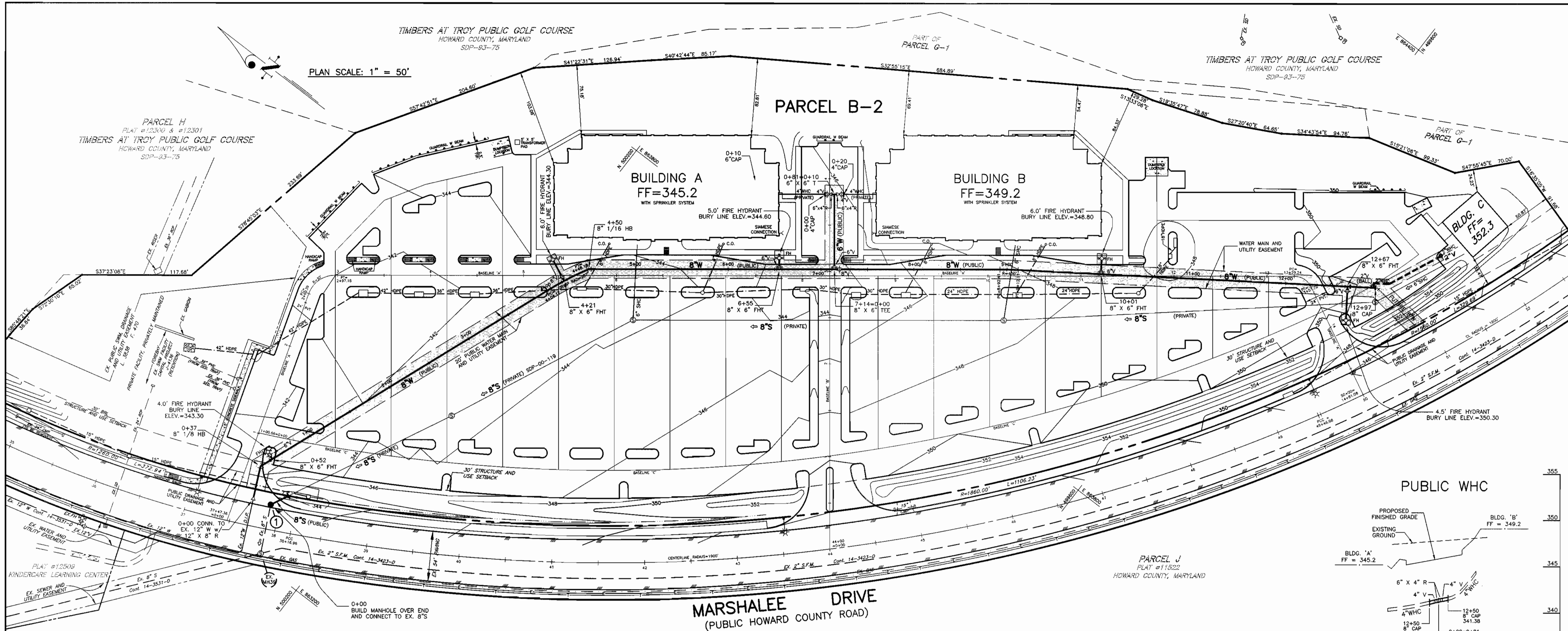
TIMBERS AT TROY PUBLIC GOLF COURSE  
HOWARD COUNTY, MARYLAND  
SDP-93-75

PLAN SCALE: 1" = 50'

PARCEL H  
PLAT # 12300 & #12301  
TIMBERS AT TROY PUBLIC GOLF COURSE  
HOWARD COUNTY, MARYLAND  
SDP-93-75

PARCEL B-2

PARCEL G-1



DEPARTMENT OF PUBLIC WORKS  
HOWARD COUNTY, MARYLAND  
R. L. ... 8-15-00  
CHIEF, BUREAU OF UTILITIES

DEPARTMENT OF PLANNING & ZONING  
HOWARD COUNTY, MARYLAND  
... 8/21/00  
CHIEF, DEVELOPMENT ENGINEERING DIVISION

CLARK · FINEPROCK & SACKETT, INC.  
ENGINEERS · PLANNERS · SURVEYORS  
7135 MINSTREL WAY COLUMBIA, MD 21045  
(410) 381-7500 BALT. (301) 621-8100 WASH.



DES:	JTR	BY:	NO.	REVISION:	DATE:
DRN:	LAI	DATE:	8-8-00		
CHK:	CCM				

WATER AND SEWER PLAN  
AND PROFILES  
600' SCALE MAP NO. 37 BLOCK NO. 10

LYNDWOOD SQUARE  
PARCEL B-2  
1ST ELECTION DISTRICT  
CONTRACT No. 14-3860-D  
SHEET 2 OF 2

(#10) C:\DRAWING FILES\99186\HCWSPLAN

**GENERAL NOTES**

**PART I - GENERAL**

- Approximate location of existing mains are shown. The contractor shall take all necessary precautions to protect existing mains and services and maintain uninterrupted supply. Any damage incurred shall be repaired immediately to the satisfaction of the Engineer at the Contractor's expense.
- All horizontal controls are based on Maryland State Coordinates. [North American Datum of 1983 (NAD '83)].
- All vertical controls are based on U.S.G.S. data.
- All pipe elevations shown are invert elevations.
- Clear all utilities by a minimum of 6". Clear all poles by 2'-0" minimum or tunnel as required. The owner has contacted the utility companies and has made arrangements for bracing of poles as shown on the drawings. In the event that the contractor's work requires the bracing of additional poles, any cost incurred by the owner for bracing of additional poles or damages shall be deducted from money owed the contractor. The contractor shall coordinate with the utility companies to schedule the bracing of the poles.
- For details not shown on the drawings, and for materials and construction methods, use Howard County Design Manual, Volume IV, Standard Specifications and Details for Construction (Latest Edition). The contractor shall have a copy of Volume IV on the job.
- Where test pits have been made on existing utilities, they are noted by the symbol at the location of the test pit. A note or notes containing the results of the test pit or pits is included on the drawings. Existing utilities in the vicinity of the proposed work for which test pits have not been dug shall be located by the contractor two weeks in advance of construction operations at his own expense.
- Contractor shall notify the following utility companies or agencies at least five working days before starting work shown on these plans:
 

State Highway Administration	410-531-5533
BC&E Co. Contractor Services	410-850-4620
BC&E Co. Under Ground Damage Control	410-291-4607
Miss Utility	1-800-257-7777
Colonial Pipeline Co.	410-549-4120
Howard County Department of Public Works	410-313-4900
Bureau of Utilities	
Bell Atlantic	1-800-446-5266
- Trees and shrubs are to be protected from damage to maximum extent. Trees and shrubs located within the construction strip are not to be removed or damaged by the contractor.
- Contractor shall remove trees, stumps and roots along line of excavation. Payment for such removal shall be included in the unit price bid for construction of the main.
- The contractor shall notify the Bureau of Highways, Howard County, at (410) 313-2450 at least five working days before any open cut of any County road or boring/jacking operation in County roads for laying water/sewer mains or house connections. The approval of these drawings will constitute compliance with DPW requirements per Section 18.114(a) of the Howard County Code.

**PART II - WATER**

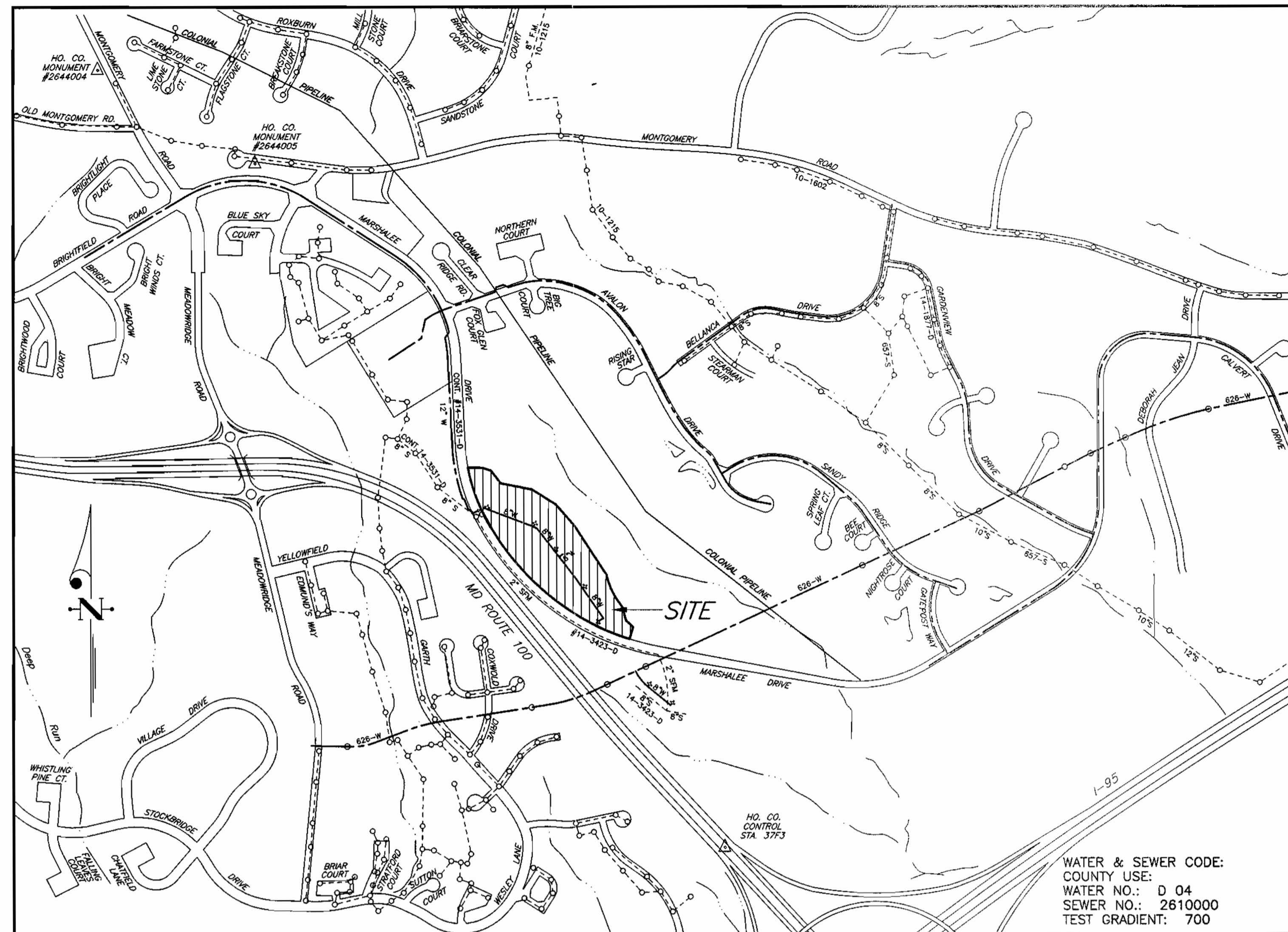
- All water mains to be D.I.P. Class 52 unless otherwise noted.
- Tops of all water mains to have a minimum of 3-1/2' cover unless otherwise noted.
- Valves adjacent to tees shall be strapped to tees.
- All fittings shall be buttressed or anchored with concrete in accordance with the Standard Details unless otherwise provided for on the drawings.
- Fire hydrants shall be set to the bury line elevations shown of the drawings. All fire hydrants shall be restrained and buttressed with concrete in accordance with Standard Details. Soil around the fire hydrant shall be compacted in accordance with Sections 1000 and 1005 of the Standard Specifications.
- The contractor shall not operate any water main valves on the existing water system.
- All water house connections shall be for inside meter setting unless otherwise noted on plans or in specifications.
- For sprinkler system for all townhomes or multi-family dwelling units shall have a minimum of 1' connection with a 3/4" meter.

**PART III - SEWER**

- All sewer mains shall be DIP or P.V.C. unless otherwise noted.
- All manholes shall be 4'-0" inside diameter unless otherwise noted.
- Force mains shall be D.I.P. only.
- Manholes shown with 12" and 16" walls are for brick manholes only.
- Manholes designated W.T. in plan and profile shall have watertight frame and covers, Standard Detail 05.52. Where watertight manhole frame and cover is used, set top of frame 1" - 6" above finished grade unless otherwise noted on the drawings.
- House(s) with the symbol "C.N.S." indicates that cellar cannot be served.

**WATER AND SEWER STAKEOUT CHART**

BASILINE	BL STA.	OFFSET BL	W/S STA.	DESCRIPTION
'A'	0+30	'9' RT.	0+00	CONNECT TO EX. 12" W 12" X 8" REDUCER
'A'	0+32	38' RT.	0+00	MANHOLE NO. 1
'A'	0+47	53' RT.	0+21	8" STOPPER
'A'	0+67	'4' RT.	0+37	8" 1/8 HB
'A'	0+79	23' RT.	0+52	8" X 6" FHT
'A'	0+85	'6' RT.	0+52	4.0' FIRE HYDRANT
'A'	5+30	14' RT.	4+04.17	8" W PC (R=287')
'A'	5+32	17' LT.	4+21	6.0' FIRE HYDRANT
'A'	5+44	6' RT.	4+21	8" X 6" FHT
'A'	5+69	6' LT.	4+48.18	8" W PT
'A'	5+71	7' LT.	4+50	8" 1/16 HB
'A'	7+75	7' LT.	6+55	8" X 6" FHT
'A'	7+75	19' LT.	6+55	5.0' FIRE HYDRANT
'A'	8+35	7' LT.	7+14+0+00	8" X 6" TEE
'B'	3+83	5' RT.	0+81+0+10	8" X 6" TEE
'B'	3+83	15' RT.	0+20	6" CAP
'B'	3+83	5' LT.	0+00	6" CAP
'A'	10+13	7' LT.	8+92.41	8" W PC (R=400')
'A'	10+32	6.5' LT.	9+12.11	8" W PT
'A'	11+21	2' LT.	10+01	8" X 6" FHT
'A'	11+22	19' LT.	10+01	5.0' FIRE HYDRANT
'A'	11+77	1' RT.	10+59	8" W @ 18" HDPE
'A'	13+68	36' LT.	12+67	8" X 6" FHT & 8" PLUG
'A'	14+00	18' LT.	12+67	4.5' FIRE HYDRANT



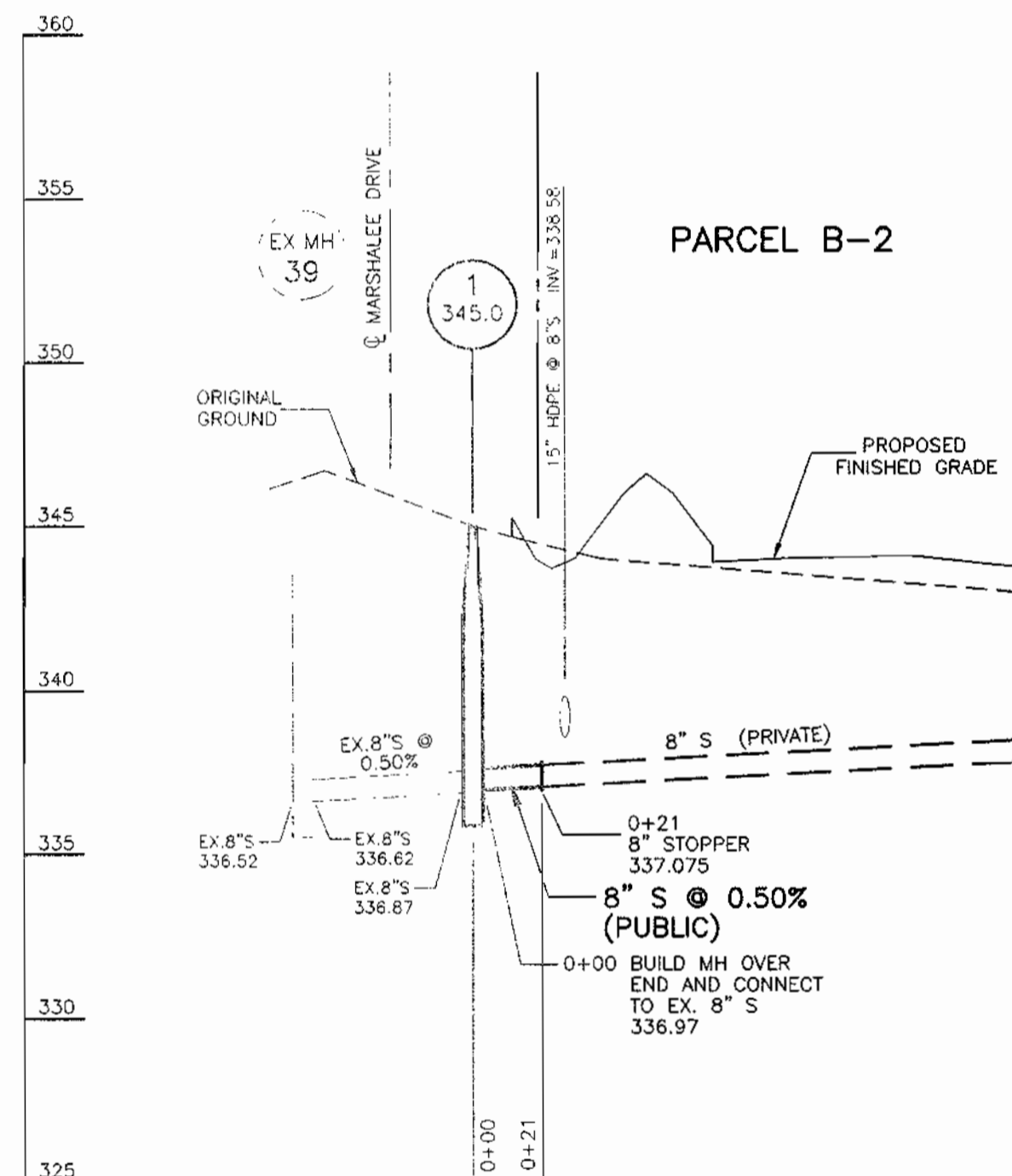
**LOCATION MAP**  
SCALE: 1" = 600'

TYPE OF BUILDING	COMMERCIAL
NO. OF LOTS/PARCELS	1 (PARCEL)
NO. OF WATER HOUSE CONNECTIONS	3
NO. OF SEWER HOUSE CONNECTIONS	1
DRAINAGE AREA	DEEP RUN (PATAPSCO)
TREATMENT PLANT	PATAPSCO WASTEWATER TREATMENT PLANT

**BENCH MARKS**

HOWARD COUNTY MONUMENT #2644004 ELEV. 402.135  
CONCRETE MONUMENT 0.1' BELOW SURFACE, SW CORNER OF INTERSECTION ROUTE 103 AND OLD MONTGOMERY ROAD.

HOWARD COUNTY MONUMENT #2644005 ELEV. 416.981  
CONCRETE MONUMENT 0.2' BELOW SURFACE, SOUTH SIDE OF MONTGOMERY ROAD, EAST OF MEADOWRIDGE ROAD.



**PROFILE SCALES:** HORIZ.: 1" = 50'  
VERT.: 1" = 5'

**WATER & SEWER CONSTRUCTION PLANS**  
**LYNDWOOD SQUARE**  
**PARCEL B-2**

1ST ELECTION DISTRICT HOWARD COUNTY, MARYLAND  
**CONTRACT No. 14-3860-D**

QUANTITIES				
ITEMS	QUANTITIES ESTIMATED	AS-BUILT		
		QUANTITIES	TYPE	MANUFACTURER/SUPPLIER
8" S	21 LF			
4" DIA. MH	1 EA.			
6" W	101 LF			
8" W	1,297 LF			
FH & FHV	5 EA.			
8" V	1 EA.			
6" V	3 EA.			
2" WHC	80 LF			
2" V	1 EA.			
4" V	1 EA.			
4" W	20 LF			

NAME OF UTILITY CONTRACTOR: \_\_\_\_\_  
SURVEY AND DRAFTING DIVISION AS-BUILT DATE: \_\_\_\_\_

SEDIMENT CONTROL MEASURES WILL BE IMPLEMENTED IN ACCORDANCE WITH SECTION 219 OF THE SPECIFICATIONS AND WITH SITE DEVELOPMENT PLAN, SDP-00-119, DRAWINGS 9 - 12 OF 15. SEDIMENT AND EROSION CONTROL.

REVIEWED FOR HOWARD SOIL CONSERVATION DISTRICT AND MEETS TECHNICAL REQUIREMENTS.

*Clay Simmons* 8/18/00  
SIGNATURE DATE  
U. S. SOIL CONSERVATION SERVICE

THIS DEVELOPMENT PLAN IS APPROVED FOR SOIL EROSION AND SEDIMENT CONTROL BY THE HOWARD SOIL CONSERVATION DISTRICT.

APPROVED: *John K. Blanton* 8/18/00  
HOWARD S. C. D. DATE

DEPARTMENT OF PUBLIC WORKS  
HOWARD COUNTY, MARYLAND  
*Robert B. ...* 8-15-00  
CHIEF, BUREAU OF UTILITIES DATE

DEPARTMENT OF PLANNING & ZONING  
HOWARD COUNTY, MARYLAND  
*...* 8/18/00  
CHIEF, DEVELOPMENT ENGINEERING DIVISION DATE

**CLARK · FINEPROCK & SACKETT, INC.**  
ENGINEERS · PLANNERS · SURVEYORS  
7135 MINSTREL WAY COLUMBIA, MD 21045  
(410) 381-7500 BALT. (301) 621-8100 WASH.



DES:	JTR			
DRN:	LAI			
CHK:	CCM			
DATE:	8-8-00	1	Rev. 4" WHC to 6" WHC	11-9-00
BY:	NO.		REVISION	DATE

**TITLE SHEET**  
600' SCALE MAP NO. 37 BLOCK NO. 10

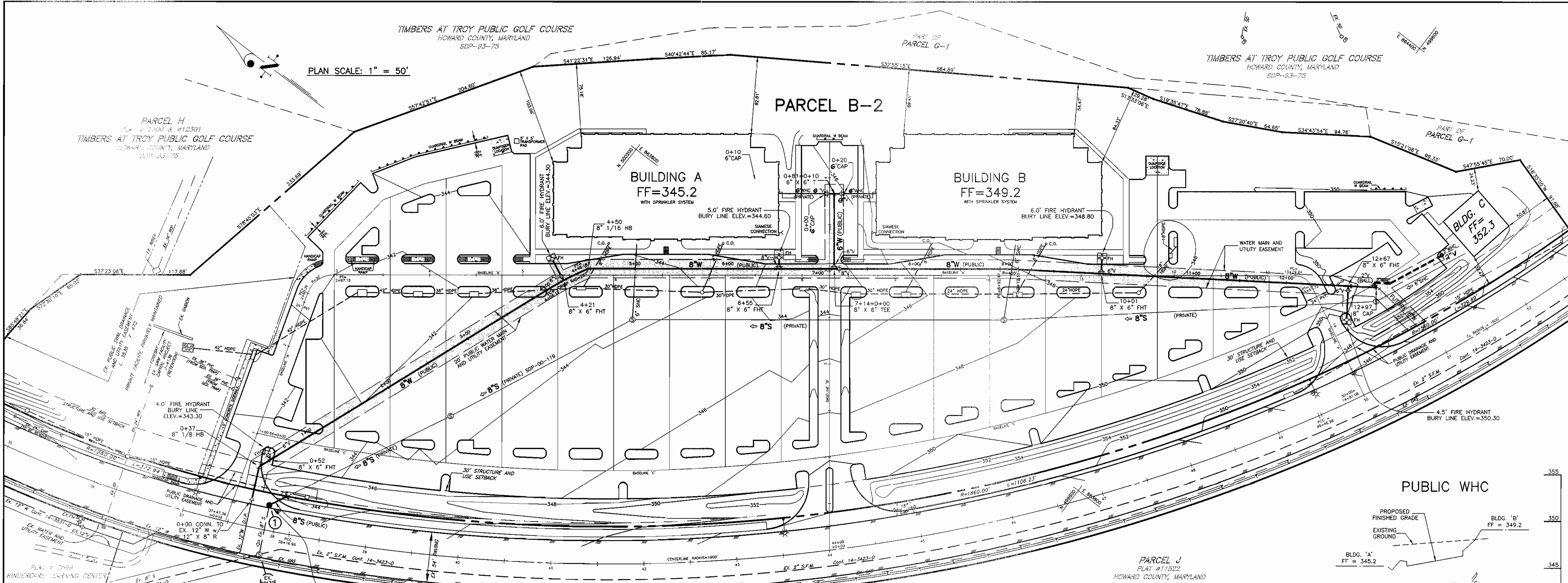
**LYNDWOOD SQUARE**  
**PARCEL B-2**  
1ST ELECTION DISTRICT  
**CONTRACT No. 14-3860-D**

SCALE:  
AS SHOWN  
SHEET  
1 OF 2

TIMBERS AT TROY PUBLIC GOLF COURSE  
HOWARD COUNTY, MARYLAND  
SDP-93-75

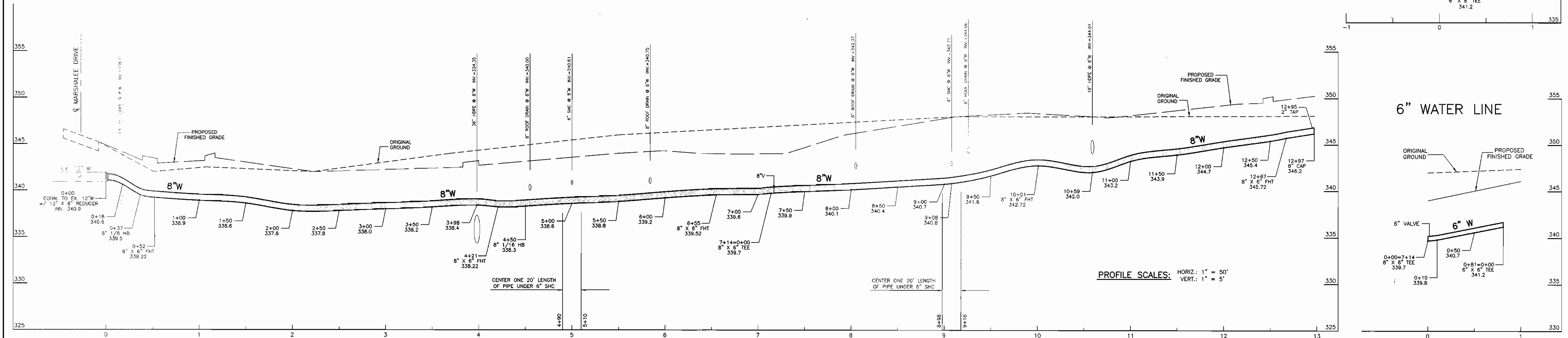
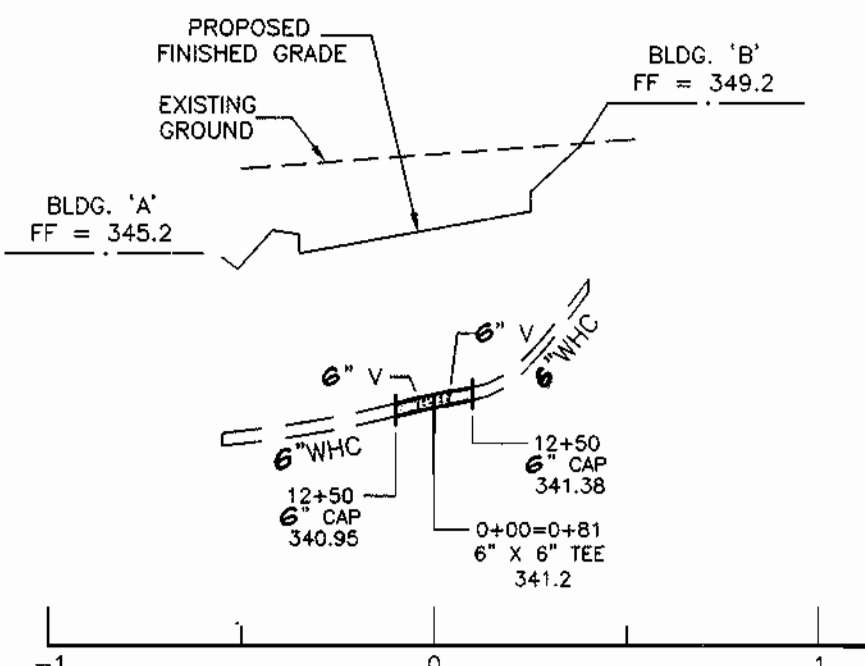
TIMBERS AT TROY PUBLIC GOLF COURSE  
HOWARD COUNTY, MARYLAND  
SDP-93-75

PLAN SCALE: 1" = 50'



MARSHALEE DRIVE  
(PUBLIC HOWARD COUNTY ROAD)

PUBLIC WHC

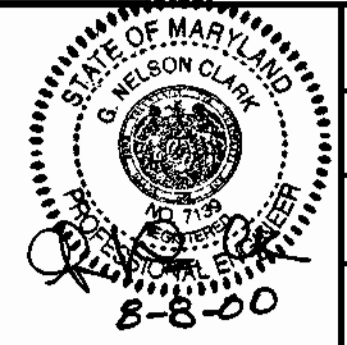


PROFILE SCALES: HORIZ.: 1" = 50'  
VERT.: 1" = 5'

DEPARTMENT OF PUBLIC WORKS  
HOWARD COUNTY, MARYLAND  
8-15-00

DEPARTMENT OF PLANNING & ZONING  
HOWARD COUNTY, MARYLAND  
8/21/00

CLARK · FINEFROCK & SACKETT, INC.  
ENGINEERS · PLANNERS · SURVEYORS  
7135 MINSTREL WAY COLUMBIA, MD 21045  
(410) 381-7500 BALT. (301) 621-8100 WASH.



DES:	JTR
DRN:	LAI
CHK:	CCM
DATE:	8-8-00
BY:	EL
NO.:	1
REVISION:	Rev. 4" WHC to 6" WHC
DATE:	11-9-00

WATER AND SEWER PLAN  
AND PROFILES  
600' SCALE MAP NO. 37 BLOCK NO. 10

LYNDWOOD SQUARE  
PARCEL B-2  
1ST ELECTION DISTRICT  
CONTRACT No. 14-3860-D  
SHEET 2 OF 2

SCALE:  
AS SHOWN

GENERAL NOTES

PART I - GENERAL

- Approximate location of existing mains are shown. The contractor shall take all necessary precautions to protect existing mains and services and maintain uninterrupted supply. Any damage incurred shall be repaired immediately to the satisfaction of the Engineer at the Contractor's expense.
- All horizontal controls are based on Maryland State Coordinates. [North American Datum of 1983 (NAD '83)].
- All vertical controls are based on U.S.G.S. data.
- All pipe elevations shown are invert elevations.
- Clear all utilities by a minimum of 6". Clear all poles by 2'-0" minimum or tunnel as required. The owner has contacted the utility companies and has made arrangements for bracing of poles as shown on the drawings. In the event that the contractor's work requires the bracing of additional poles, any cost incurred by the owner for bracing of additional poles or damages shall be deducted from money owed the contractor. The contractor shall coordinate with the utility companies to schedule the bracing of the poles.
- For details not shown on the drawings, and for materials and construction methods, use Howard County Design Manual, Volume IV, Standard Specifications and Details for Construction (Latest Edition). The contractor shall have a copy of Volume IV on the job.
- Where test pits have been made on existing utilities, they are noted by the symbol at the location of the test pit. A note or notes containing the results of the test pit or pits is included on the drawings. Existing utilities in the vicinity of the proposed work for which test pits have not been dug shall be located by the contractor two weeks in advance of construction operations at his own expense.
- Contractor shall notify the following utility companies or agencies at least five working days before starting work shown on these plans:
 

State Highway Administration	410-531-5533
BG&E Co. Contractor Services	410-850-4620
BG&E Co. Under Ground Damage Control	410-291-4607
Miss Utility	1-800-257-7777
Colonial Pipeline Co.	410-549-4120
Howard County Department of Public Works	410-313-4900
Bureau of Utilities	410-313-4900
Bell Atlantic	1-800-446-5266
- Trees and shrubs are to be protected from damage to maximum extent. Trees and shrubs located within the construction strip are not to be removed or damaged by the contractor.
- Contractor shall remove trees, stumps and roots along line of excavation. Payment for such removal shall be included in the unit price bid for construction of the main.
- The contractor shall notify the Bureau of Highways, Howard County, at (410) 313-2450 at least five working days before any open cut of any County road or boring/jacking operation in County roads for laying water/sewer mains or house connections. The approval of these drawings will constitute compliance with DPW requirements per Section 18.114(a) of the Howard County Code.

PART II - WATER

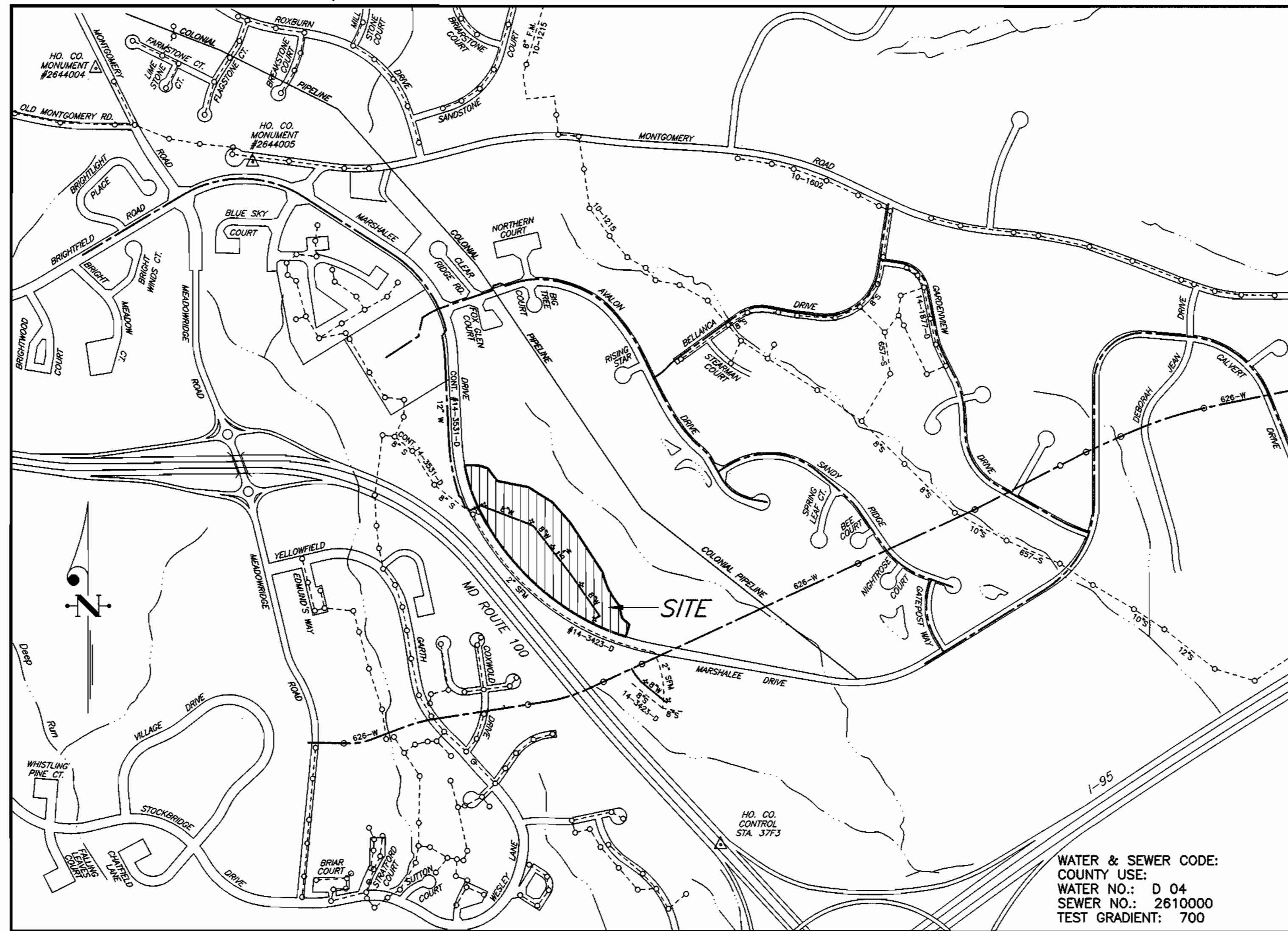
- All water mains to be D.I.P. Class 52 unless otherwise noted.
- Tops of all water mains to have a minimum of 3'-1/2' cover unless otherwise noted.
- Valves adjacent to tees shall be strapped to tees.
- All fittings shall be buttressed or anchored with concrete in accordance with the Standard Details unless otherwise provided for on the drawings.
- Fire hydrants shall be set to the bury line elevations shown of the drawings. All fire hydrants shall be restrained and buttressed with concrete in accordance with Standard Details. Soil around the fire hydrant shall be compacted in accordance with Sections 1000 and 1005 of the Standard Specifications.
- The contractor shall not operate any water main valves on the existing water system.
- All water house connections shall be for inside meter setting unless otherwise noted on plans or in specifications.
- For sprinkler system for all townhomes or multi-family dwelling units shall have a minimum of 1" connection with a 3/4" meter.

PART III - SEWER

- All sewer mains shall be DIP or P.V.C. unless otherwise noted.
- All manholes shall be 4'-0" inside diameter unless otherwise noted.
- Force mains shall be D.I.P. only.
- Manholes shown with 12" and 16" walls are for brick manholes only.
- Manholes designated W.T. in plan and profile shall have watertight frame and covers, Standard Detail G5.52. Where watertight manhole frame and cover is used, set top of frame 1" - 6" above finished grade unless otherwise noted on the drawings.
- House(s) with the symbol "C.N.S." indicates that cellar cannot be served.

WATER AND SEWER STAKEOUT CHART

BASILINE	BL. STA.	OFFSET BL.	W/S STA.	DESCRIPTION
'A'	0+30	19' RT.	0+00	CONNECT TO EX. 12" W 12" X 8" REDUCER
'A'	0+32	38' RT.	0+00	MANHOLE NO. 1
'A'	0+47	53' RT.	0+21	8" STOPPER
'A'	0+67	14' RT.	0+37	8" 1/8 HB
'A'	0+79	23' RT.	0+52	8" X 6" FHT
'A'	0+85	16' RT.	0+52	4.0' FIRE HYDRANT
'A'	5+30	14' RT.	4+04.17	8" W PC (R=287')
'A'	5+32	17' LT.	4+21	6.0' FIRE HYDRANT
'A'	5+44	6' RT.	4+21	8" X 6" FHT
'A'	5+69	6' LT.	4+48.18	8" W PT
'A'	5+71	7' LT.	4+50	8" 1/16 HB
'A'	7+75	7' LT.	6+55	8" X 6" FHT
'A'	7+75	19' LT.	6+55	5.0' FIRE HYDRANT
'A'	8+35	7' LT.	7+14=0+00	8" X 6" TEE
'B'	3+83	5' RT.	0+81=0+10	8" X 6" TEE
'B'	3+83	15' RT.	0+20	6" CAP
'B'	3+83	5' LT.	0+00	6" CAP
'A'	10+13	7' LT.	8+92.41	8" W PC (R=400')
'A'	10+32	6.5' LT.	9+12.11	8" W PT
'A'	11+21	2' LT.	10+01	8" X 6" FHT
'A'	11+22	19' LT.	10+01	6.0' FIRE HYDRANT
'A'	11+77	1' RT.	10+59	8" W @ 18" HDPE
'C'	12+227	7.3' LT.	12+79	8" X 6" FHT & 8" PLUG
'C'	12+29	17' LT.	12+79	4.5' FIRE HYDRANT



LOCATION MAP

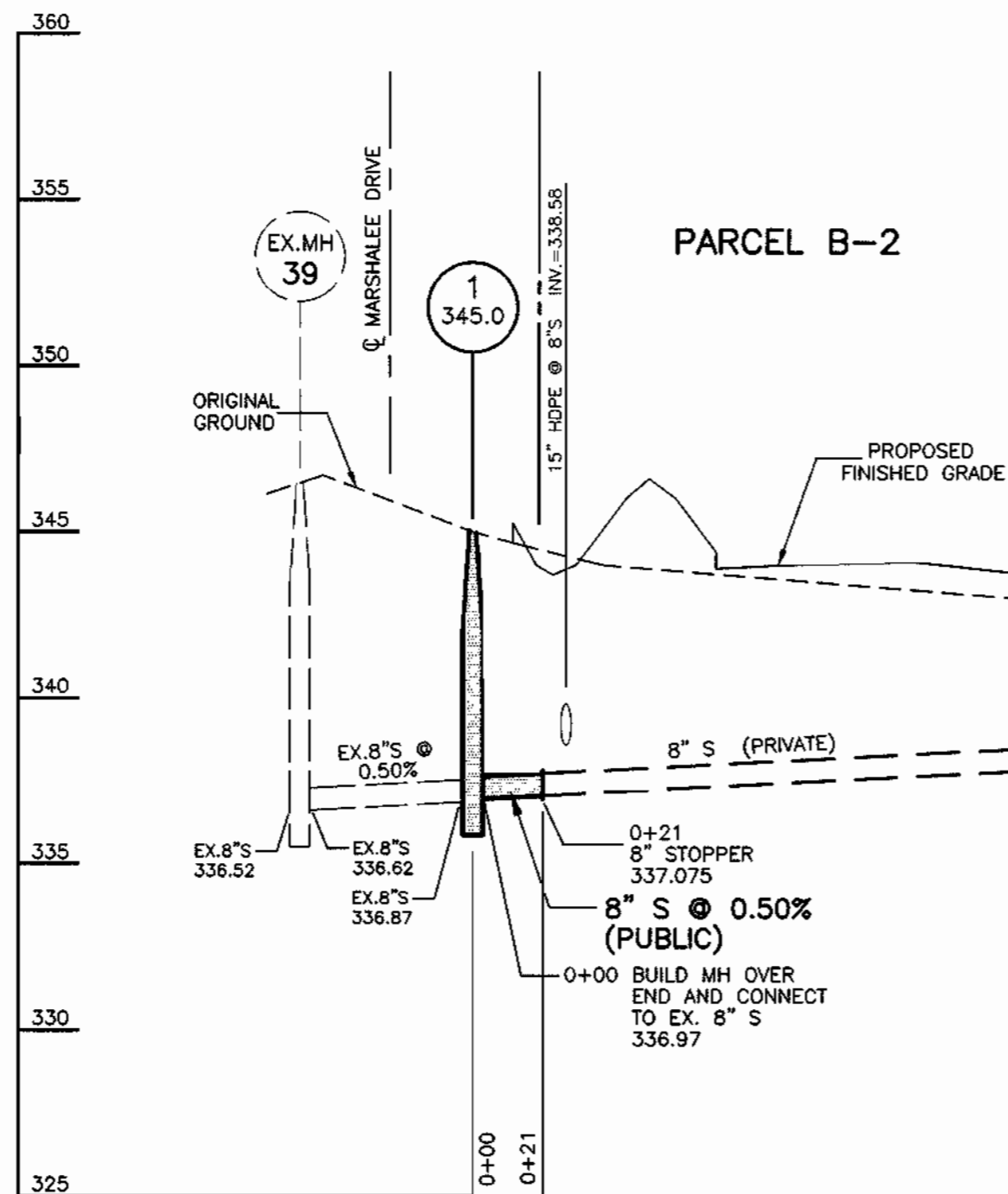
SCALE: 1" = 600'

BENCH MARKS

HOWARD COUNTY MONUMENT #2644004 ELEV. 402.135  
 CONCRETE MONUMENT 0.1' BELOW SURFACE, SW CORNER OF INTERSECTION ROUTE 103 AND OLD MONTGOMERY ROAD.

HOWARD COUNTY MONUMENT #2644005 ELEV. 416.981  
 CONCRETE MONUMENT 0.2' BELOW SURFACE, SOUTH SIDE OF MONTGOMERY ROAD, EAST OF MEADOWRIDGE ROAD.

TYPE OF BUILDING	COMMERCIAL
NO. OF LOTS/PARCELS	1 (PARCEL)
NO. OF WATER HOUSE CONNECTIONS	2
NO. OF SEWER HOUSE CONNECTIONS	1
DRAINAGE AREA	DEEP RUN (PATAPSCO)
TREATMENT PLANT	PATAPSCO WASTEWATER TREATMENT PLANT



PROFILE SCALES: HORIZ.: 1" = 50'  
 VERT.: 1" = 5'

# WATER & SEWER CONSTRUCTION PLANS LYNDWOOD SQUARE PARCEL B-2

1ST ELECTION DISTRICT HOWARD COUNTY, MARYLAND

CONTRACT No. 14-3860-D

SEDIMENT CONTROL MEASURES WILL BE IMPLEMENTED IN ACCORDANCE WITH SECTION 219 OF THE SPECIFICATIONS AND WITH SITE DEVELOPMENT PLAN, SDP-00-119, DRAWINGS 9 - 12 OF 15, SEDIMENT AND EROSION CONTROL.

REVIEWED FOR HOWARD SOIL CONSERVATION DISTRICT AND MEETS TECHNICAL REQUIREMENTS.

*Clay Simmon* 8/18/02  
 SIGNATURE DATE

U. S. SOIL CONSERVATION SERVICE

THIS DEVELOPMENT PLAN IS APPROVED FOR SOIL EROSION AND SEDIMENT CONTROL BY THE HOWARD SOIL CONSERVATION DISTRICT.

APPROVED: *John K. Roberts* 8/18/02  
 HOWARD S. C. D. DATE

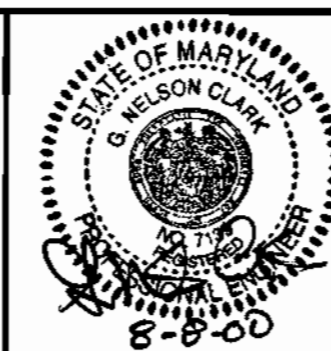
ITEMS	QUANTITIES ESTIMATED	QUANTITIES AS-BUILT		
		QUANTITIES	TYPE	MANUFACTURER/SUPPLIER
8" S	21 LF	21.0	P.V.C. SDR 35	J.M. MANUFACTURING
4' DIA. MH	1 EA.	1.0	4' SANITARY	ATLANTIC CONCRETE PRODUCTS
6" W	101 LF	101.0	D.I.P.	ATLANTIC STATES DUCTILE IRON PIPE
8" W	1,279.7 LF	1,279.7	D.I.P.	ATLANTIC STATES
FH & FHV	5 EA.	5.0	CENTURION HYD	MUELLER CO.
8" V	3 EA.	3.0	RESILIENT GATE	MUELLER CO.
6" V	3 EA.	3.0	RESILIENT GATE	MUELLER CO.

NAME OF UTILITY CONTRACTOR: PAVEY INC.  
 SURVEY AND DRAFTING DIVISION AS-BUILT DATE: 01/14/02

DEPARTMENT OF PUBLIC WORKS  
 HOWARD COUNTY, MARYLAND

DEPARTMENT OF PLANNING & ZONING  
 HOWARD COUNTY, MARYLAND

CLARK · FINEPROCK & SACKETT, INC.  
 ENGINEERS · PLANNERS · SURVEYORS  
 7135 MINSTREL WAY COLUMBIA, MD 21045  
 (410) 381-7500 BALT. (301) 621-8100 WASH.



DES:	JTR		
DRN:	LAI		
CHK:	CCM	KCI 3 AS-BUILT DATA SHOWN	12/27/01
DATE:	8-8-00	CFES 2 Rev. Stakeout Chart, Quantities & No. of W.H.C.s.	5-14-01
BY:		1 Rev. 4" WMC to 6" WMC	11-9-00
NO.			
REVISION			

TITLE SHEET

600' SCALE MAP NO. 37 BLOCK NO. 10

LYNDWOOD SQUARE  
 PARCEL B-2

1ST ELECTION DISTRICT  
 CONTRACT No. 14-3860-D

SCALE:  
 AS SHOWN  
 SHEET  
 1 OF 2

TIMBERS AT TROY PUBLIC GOLF COURSE  
HOWARD COUNTY, MARYLAND  
SDP-93-75

TIMBERS AT TROY PUBLIC GOLF COURSE  
HOWARD COUNTY, MARYLAND  
SDP-93-75

PLAN SCALE: 1" = 50'

PARCEL B-2

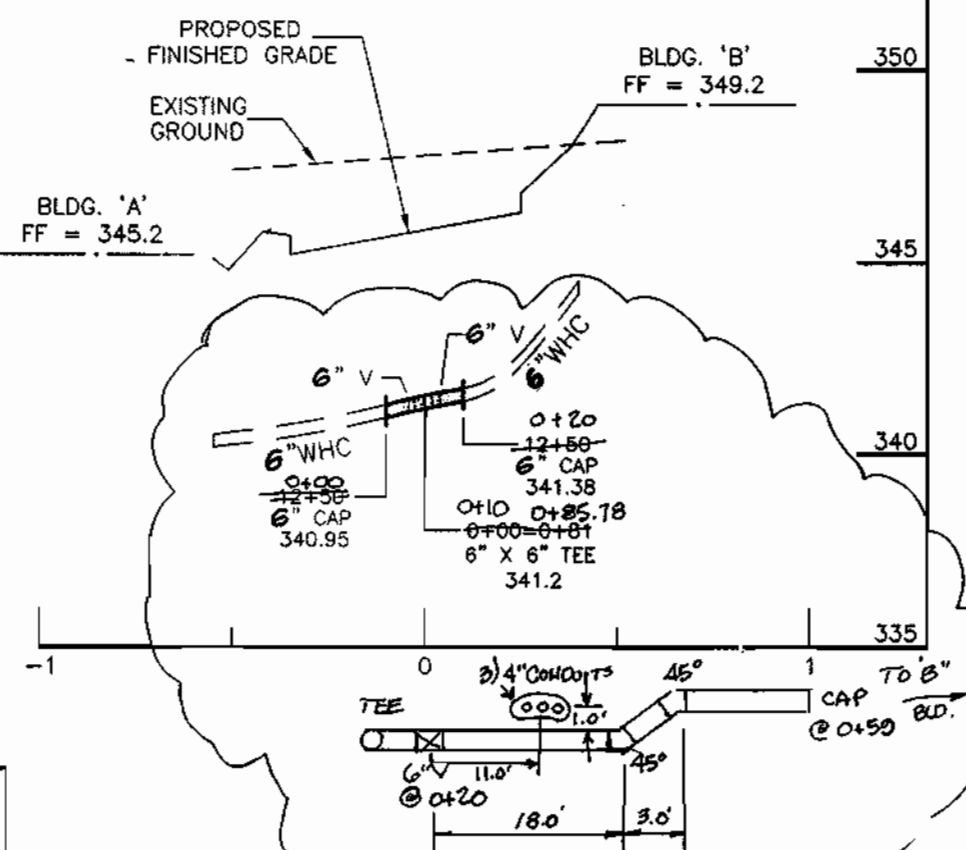
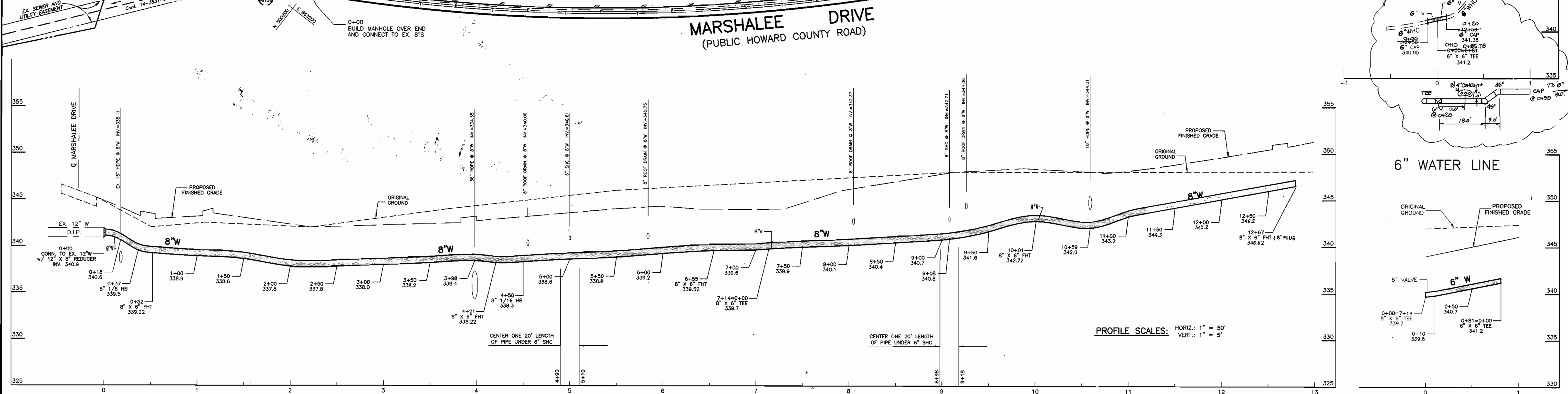
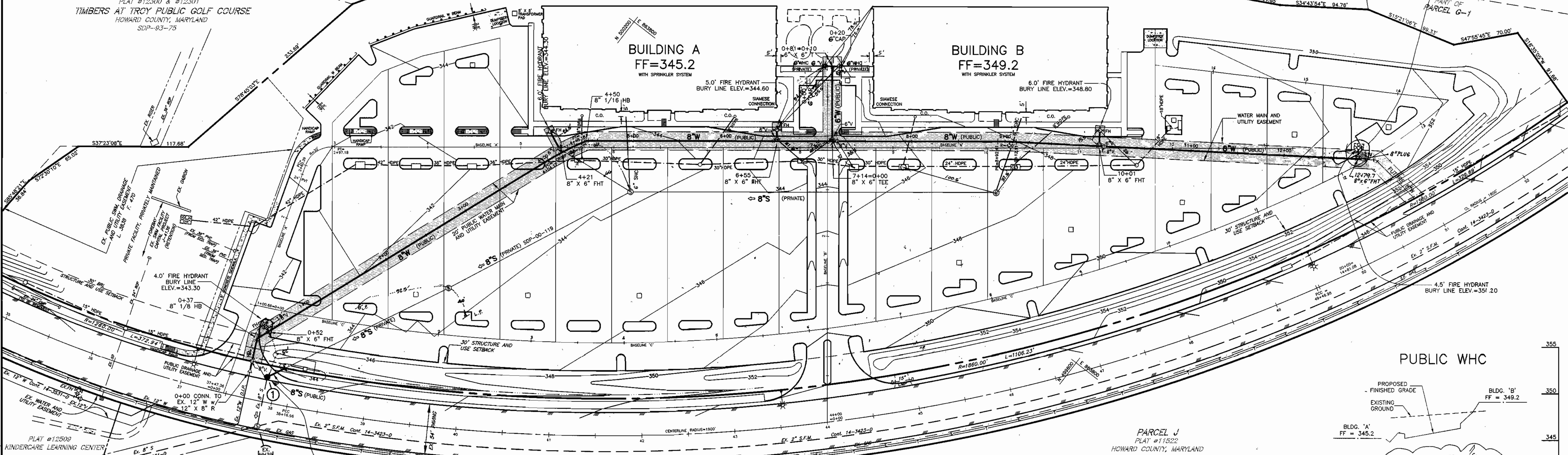
PARCEL H  
PLAT #12300 & #12301  
TIMBERS AT TROY PUBLIC GOLF COURSE  
HOWARD COUNTY, MARYLAND  
SDP-93-75

BUILDING A  
FF=345.2  
WITH SPRINKLER SYSTEM

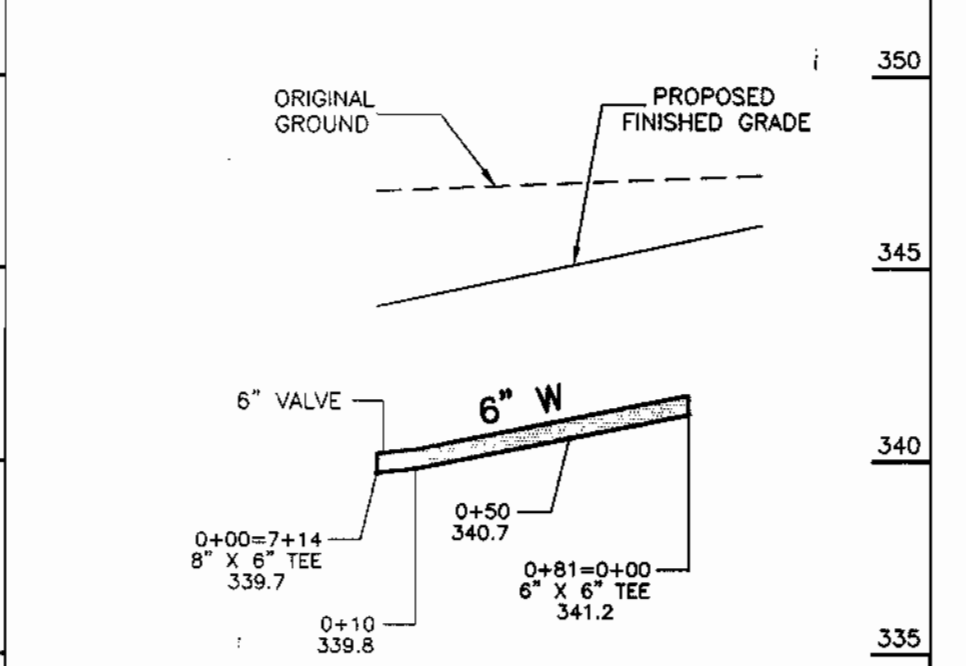
BUILDING B  
FF=349.2  
WITH SPRINKLER SYSTEM

MARSHALEE DRIVE  
(PUBLIC HOWARD COUNTY ROAD)

PUBLIC WHC



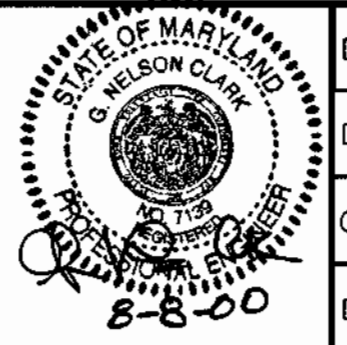
6" WATER LINE



DEPARTMENT OF PUBLIC WORKS  
HOWARD COUNTY, MARYLAND  
R. L. J. [Signature]  
CHIEF, BUREAU OF UTILITIES

DEPARTMENT OF PLANNING & ZONING  
HOWARD COUNTY, MARYLAND  
[Signature]  
CHIEF, DEVELOPMENT ENGINEERING DIVISION

CLARK · FINEROCK & SACKETT, INC.  
ENGINEERS · PLANNERS · SURVEYORS  
7135 MINSTREL WAY COLUMBIA, MD 21045  
(410) 381-7500 BALT. (301) 621-8100 WASH.



DES:	JTR			
DRN:	LAI			
CHK:	CCM	KCI 3 ASBUILT DATA SHOWN	12/27/01	
		CF&S 2 REV. F.H. loc., added two (2) 8\"/>		
		BL 1 REV. 4\"/>		
DATE:	8-8-00	BY NO.		REVISION
			DATE	

WATER AND SEWER PLAN  
AND PROFILES  
600' SCALE MAP NO. 37 BLOCK NO. 10

LYNDWOOD SQUARE  
PARCEL B-2  
1ST ELECTION DISTRICT  
CONTRACT No. 14-3860-D  
SHEET 2 OF 2

SCALE:  
AS SHOWN

**GENERAL NOTES**

**PART I - GENERAL**

1. Approximate location of existing mains are shown. The contractor shall take all necessary precautions to protect existing mains and services and maintain uninterrupted supply. Any damage incurred shall be repaired immediately to the satisfaction of the Engineer at the Contractor's expense.
2. All horizontal controls are based on Maryland State Coordinates. [North American Datum of 1983 (NAD '83)].
3. All vertical controls are based on U.S.G.S. data.
4. All pipe elevations shown are invert elevations.
5. Clear all utilities by a minimum of 6". Clear all poles by 2'-0" minimum or tunnel as required. The owner has contacted the utility companies and has made arrangements for bracing of poles as shown on the drawings. In the event that the contractor's work requires the bracing of additional poles, any cost incurred by the owner for bracing of additional poles or damages shall be deducted from money owed the contractor. The contractor shall coordinate with the utility companies to schedule the bracing of the poles.
6. For details not shown on the drawings, and for materials and construction methods, use Howard County Design Manual, Volume IV, Standard Specifications and Details for Construction (Latest Edition). The contractor shall have a copy of Volume IV on the job.
7. Where test pits have been made on existing utilities, they are noted by the symbol at the location of the test pit. A note or notes containing the results of the test pit or pits is included on the drawings. Existing utilities in the vicinity of the proposed work for which test pits have not been dug shall be located by the contractor two weeks in advance of construction operations at his own expense.
8. Contractor shall notify the following utility companies or agencies at least five working days before starting work shown on these plans:
 

State Highway Administration	410-531-5533
BG&E Co. Contractor Services	410-850-4620
BG&E Co. Under Ground Damage Control	410-291-4607
Miss Utility	1-800-257-7777
Colonial Pipeline Co.	410-549-4120
Howard County Department of Public Works Bureau of Utilities	410-313-4900
Bell Atlantic	1-800-446-5266
9. Trees and shrubs are to be protected from damage to maximum extent. Trees and shrubs located within the construction strip are not to be removed or damaged by the contractor.
10. Contractor shall remove trees, stumps and roots along line of excavation. Payment for such removal shall be included in the unit price bid for construction of the main.
11. The contractor shall notify the Bureau of Highways, Howard County, at (410) 313-2450 at least five working days before any open cut of any County road or boring/jacking operation in County roads for laying water/sewer mains or house connections. The approval of these drawings will constitute compliance with DPW requirements per Section 18.114(a) of the Howard County Code.

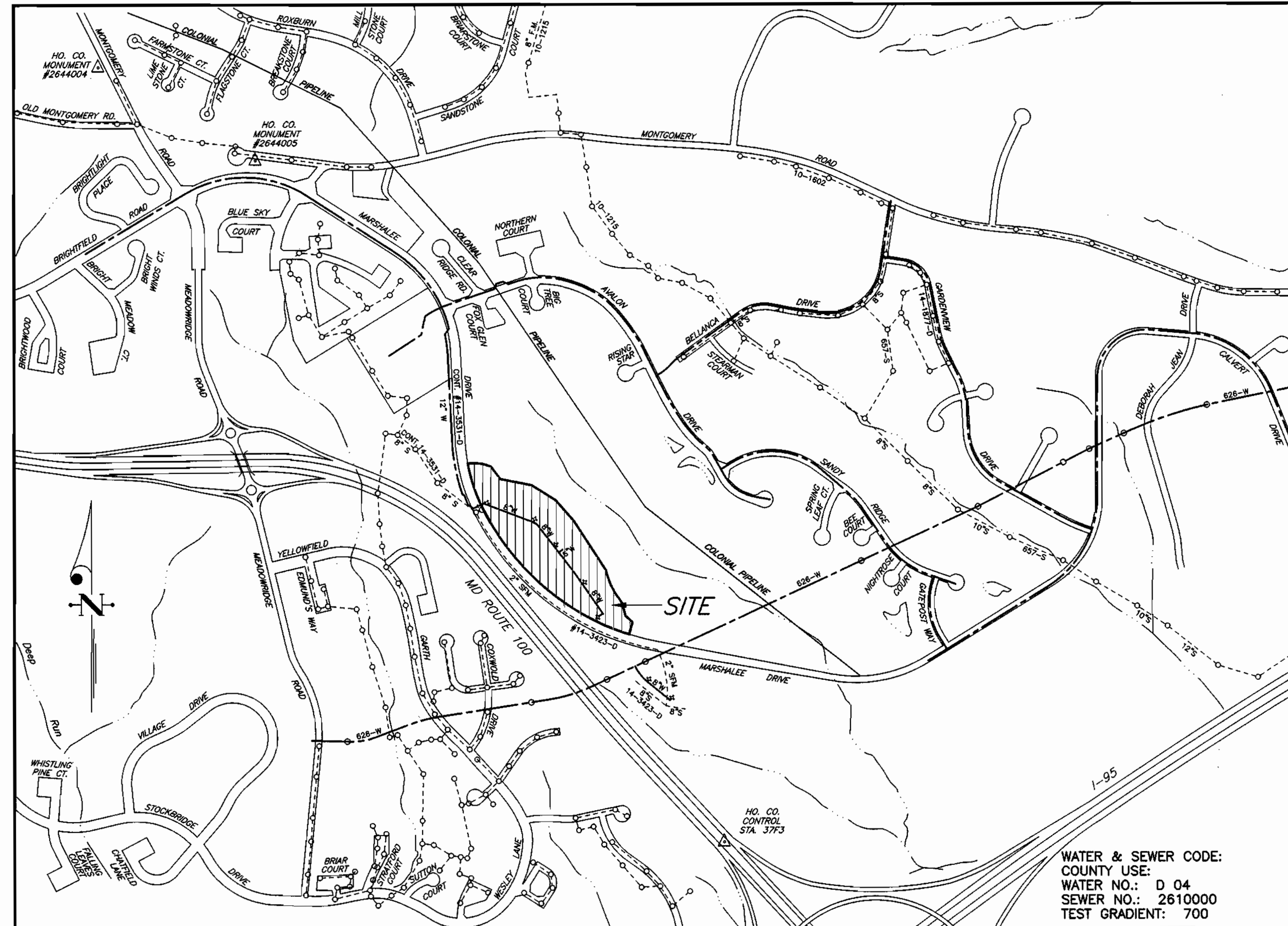
**PART II - WATER**

1. All water mains to be D.I.P. Class 52 unless otherwise noted.
2. Tops of all water mains to have a minimum of 3-1/2' cover unless otherwise noted.
3. Valves adjacent to tees shall be strapped to tees.
4. All fittings shall be buttressed or anchored with concrete in accordance with the Standard Details unless otherwise provided for on the drawings.
5. Fire hydrants shall be set to the bury line elevations shown of the drawings. All fire hydrants shall be restrained and buttressed with concrete in accordance with Standard Details. Soil around the fire hydrant shall be compacted in accordance with Sections 1000 and 1005 of the Standard Specifications.
6. The contractor shall not operate any water main valves on the existing water system.
7. All water house connections shall be for inside meter setting unless otherwise noted on plans or in specifications.
8. For sprinkler system for all townhomes or multi-family dwelling units shall have a minimum of 1" connection with a 3/4" meter.

**PART III - SEWER**

1. All sewer mains shall be DIP or P.V.C. unless otherwise noted.
2. All manholes shall be 4'-0" inside diameter unless otherwise noted.
3. Force mains shall be D.I.P. only.
4. Manholes shown with 12" and 16" walls are for brick manholes only.
5. Manholes designated W.T. in plan and profile shall have watertight frame and covers, Standard Detail G5.52. Where watertight manhole frame and cover is used, set top of frame 1" - 6" above finished grade unless otherwise noted on the drawings.
6. House(s) with the symbol "C.N.S." indicates that cellar cannot be served.

BASILINE	BL. STA.	OFFSET BL.	W/S STA.	DESCRIPTION
'A'	0+30	19' RT.	0+00	CONNECT TO EX. 12" X 8" REDUCER
'A'	0+32	38' RT.	0+00	MANHOLE NO. 1
'A'	0+47	53' RT.	0+21	8" STOPPER
'A'	0+67	14' RT.	0+37	8" 1/8 HB
'A'	0+79	23' RT.	0+52	8" X 6" FHT
'A'	0+85	16' RT.	0+52	4.0' FIRE HYDRANT
'A'	5+30	14' RT.	4+04.17	8" W PC (R=287')
'A'	5+32	17' LT.	4+21	6.0' FIRE HYDRANT
'A'	5+44	8' RT.	4+21	8" X 6" FHT
'A'	5+69	6' LT.	4+48.18	8" W PT
'A'	5+71	7' LT.	4+50	8" 1/16 HB
'A'	7+75	7' LT.	6+55	8" X 6" FHT
'A'	7+75	19' LT.	6+55	5.0' FIRE HYDRANT
'A'	8+35	7' LT.	7+14=0+00	8" X 6" TEE
'B'	3+83	5' RT.	0+81=0+10	8" X 6" TEE
'B'	3+83	15' RT.	0+20	6" CAP
'B'	3+83	5' LT.	0+00	6" CAP
'A'	10+13	7' LT.	8+92.41	8" W PC (R=400')
'A'	10+32	6.5' LT.	9+12.11	8" W PT
'A'	11+21	2' LT.	10+01	8" X 6" FHT
'A'	11+22	19' LT.	10+01	6.0' FIRE HYDRANT
'A'	11+77	1' RT.	10+59	8" W 18" HDPE
'C'	12+22.7	7.3' LT.	12+79	8" X 6" FHT & 8" PLUG
'C'	12+29	17' LT.	12+79	4.5' FIRE HYDRANT



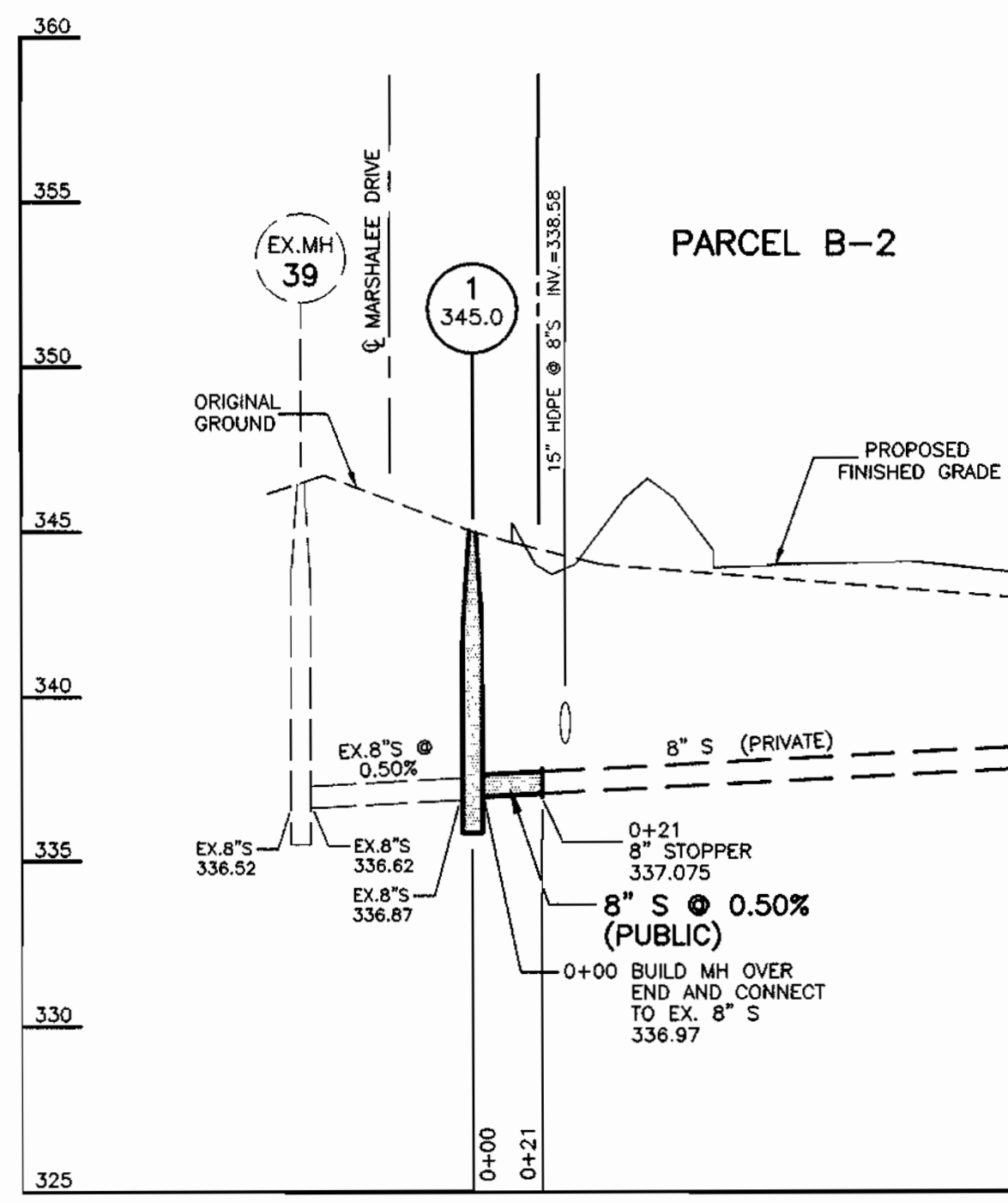
**LOCATION MAP**  
SCALE: 1" = 600'

TYPE OF BUILDING	COMMERCIAL
NO. OF LOTS/PARCELS	1 (PARCEL)
NO. OF WATER HOUSE CONNECTIONS	2
NO. OF SEWER HOUSE CONNECTIONS	1
DRAINAGE AREA	DEEP RUN (PATAPSCO)
TREATMENT PLANT	PATAPSCO WASTEWATER TREATMENT PLANT

**BENCH MARKS**

HOWARD COUNTY MONUMENT #2644004 ELEV. 402.135  
CONCRETE MONUMENT 0.1' BELOW SURFACE, SW CORNER OF INTERSECTION ROUTE 103 AND OLD MONTGOMERY ROAD.

HOWARD COUNTY MONUMENT #2644005 ELEV. 416.981  
CONCRETE MONUMENT 0.2' BELOW SURFACE, SOUTH SIDE OF MONTGOMERY ROAD, EAST OF MEADOWRIDGE ROAD.



**PROFILE SCALES:** HORIZ.: 1" = 50'  
VERT.: 1" = 5'

# WATER & SEWER CONSTRUCTION PLANS LYNDWOOD SQUARE PARCEL B-2

1ST ELECTION DISTRICT HOWARD COUNTY, MARYLAND

## CONTRACT No. 14-3860-D

SEDIMENT CONTROL MEASURES WILL BE IMPLEMENTED IN ACCORDANCE WITH SECTION 2.19 OF THE SPECIFICATIONS AND WITH SITE DEVELOPMENT PLAN, SDP-00-119, DRAWINGS 9 - 12 OF 15, SEDIMENT AND EROSION CONTROL.

REVIEWED FOR HOWARD SOIL CONSERVATION DISTRICT AND MEETS TECHNICAL REQUIREMENTS.

*Clay Simmons* 8/18/00  
SIGNATURE DATE

U. S. SOIL CONSERVATION SERVICE

THIS DEVELOPMENT PLAN IS APPROVED FOR SOIL EROSION AND SEDIMENT CONTROL BY THE HOWARD SOIL CONSERVATION DISTRICT.

APPROVED: *John K. Blanton* 8/18/00  
HOWARD S. C. D. DATE

ITEMS	QUANTITIES ESTIMATED	AS-BUILT		
		QUANTITIES	TYPE	MANUFACTURER/SUPPLIER
8" S	21 LF			
4" DIA. MH	1 EA.			
6" W	101 LF			
8" W	1,279.7 LF			
FH & FHV	5 EA.			
8" V	3 EA.			
6" V	3 EA.			
NAME OF UTILITY CONTRACTOR:				
SURVEY AND DRAFTING DIVISION AS-BUILT DATE:				

DEPARTMENT OF PUBLIC WORKS  
HOWARD COUNTY, MARYLAND

*John K. Blanton* 8-15-00  
DATE

DEPARTMENT OF PLANNING & ZONING  
HOWARD COUNTY, MARYLAND

*John K. Blanton* 8/21/00  
DATE

CLARK · FINEPROCK & SACKETT, INC.  
ENGINEERS · PLANNERS · SURVEYORS

7135 MINSTREL WAY COLUMBIA, MD 21045  
(410) 381-7500 BALT. (301) 621-8100 WASH.



DES:	JTR				
DRN:	LAI				
CHK:	CCM	CFES 2	Rev. Stakeout Chart, Quantities & No. of W.H.C.s.	5-14-01	
DATE:	8-8-00		Rev. 4" WHC to 6" WHC	11-9-00	
BY:	NO.		REVISION	DATE	

**TITLE SHEET**

600' SCALE MAP NO. 37 BLOCK NO. 10

**LYNDWOOD SQUARE  
PARCEL B-2**

1ST ELECTION DISTRICT  
**CONTRACT No. 14-3860-D**

SCALE:  
AS SHOWN

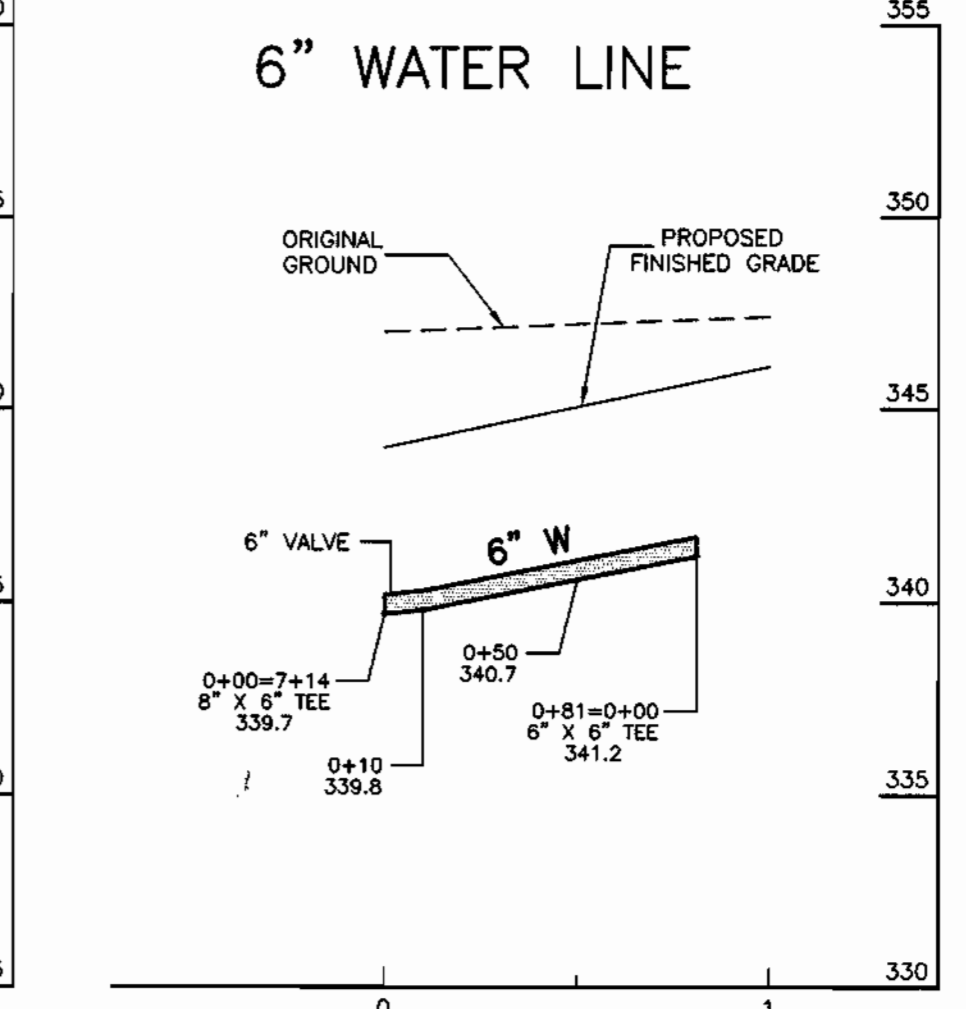
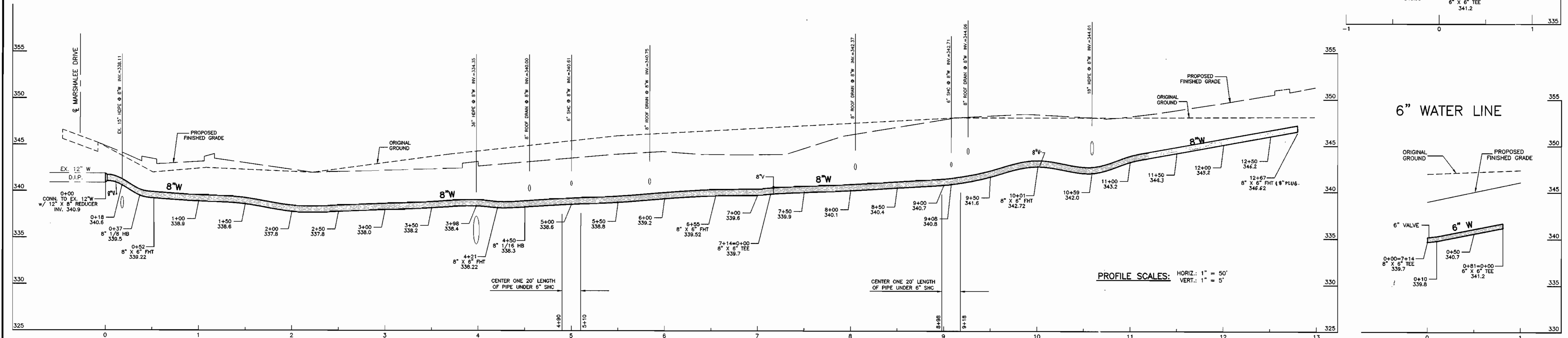
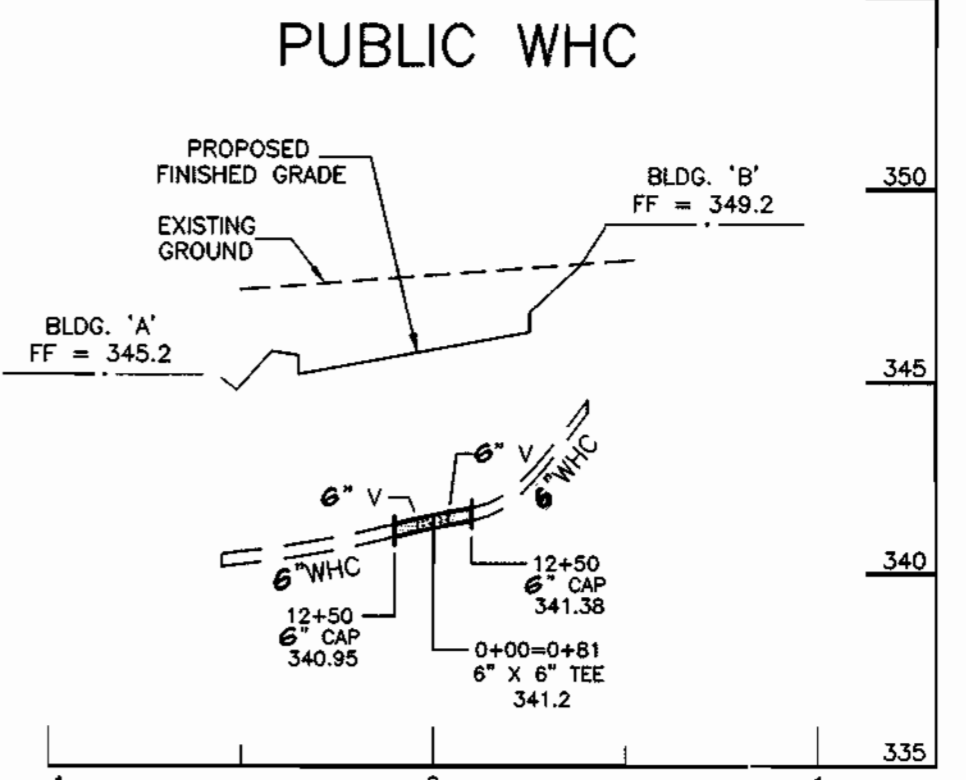
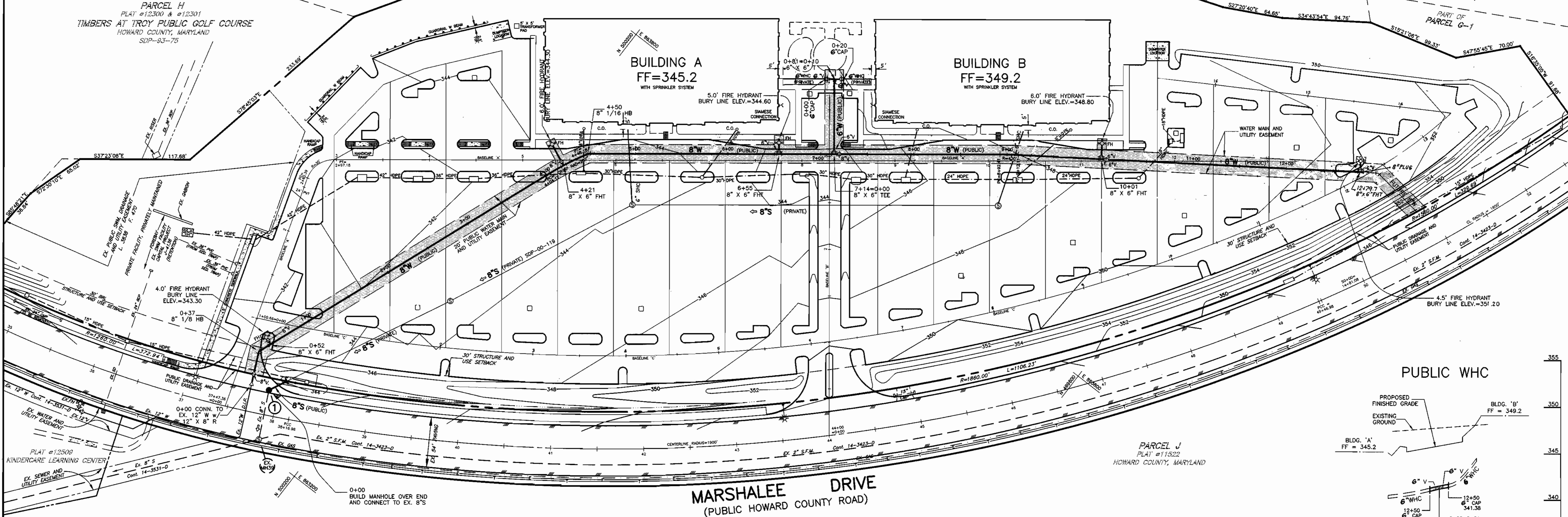
SHEET  
1 OF 2

TIMBERS AT TROY PUBLIC GOLF COURSE  
HOWARD COUNTY, MARYLAND  
SDP-93-75

TIMBERS AT TROY PUBLIC GOLF COURSE  
HOWARD COUNTY, MARYLAND  
SDP-93-75

PLAN SCALE: 1" = 50'

PARCEL B-2



DEPARTMENT OF PUBLIC WORKS  
HOWARD COUNTY, MARYLAND  
8-15-00

DEPARTMENT OF PLANNING & ZONING  
HOWARD COUNTY, MARYLAND  
8/21/00

CLARK · FINEPROCK & SACKETT, INC.  
ENGINEERS · PLANNERS · SURVEYORS  
7135 MINSTREL WAY COLUMBIA, MD 21045  
(410) 381-7500 BALT. (301) 621-8100 WASH.



DES:	JTR			
DRN:	LAI			
CHK:	CCM	GF 5	2	Rev. F.H. Inc., added two (2) 8" W's and deleted 2" W.H.C.
DATE:	8-8-00	BL	1	Rev. 4" WHC to 6" WHC
BY:		NO.		REVISION
				DATE

WATER AND SEWER PLAN  
AND PROFILES  
600' SCALE MAP NO. 37 BLOCK NO. 10

LYNDWOOD SQUARE  
PARCEL B-2  
1ST ELECTION DISTRICT  
CONTRACT No. 14-3860-D  
SCALE: AS SHOWN  
SHEET 2 OF 2

(#10) C:\DRAWING FILES\99186\HCWSPAN