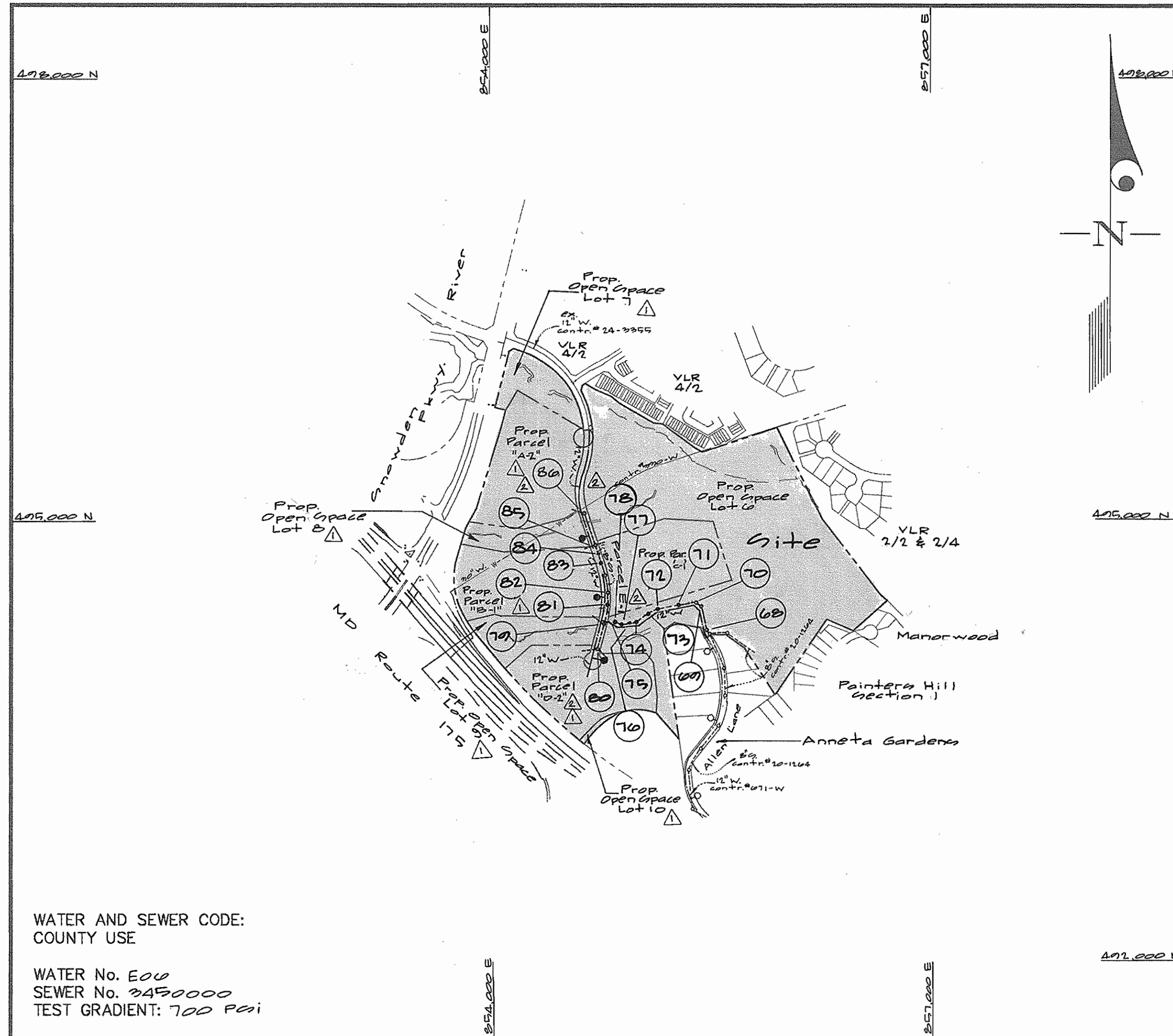


QUANTITIES				
ITEMS	QUANTITIES ESTIMATED	AS-BUILT		
		QUANTITIES	TYPE	MANUFACTURER/SUPPLIER/SUPPLY
12" W	2313 L.F. Δ	2313	CL 82	GRIFFIN PIPE/BELAIR RD
8" W	520 L.F. Δ	610	"	"
6" W	92 L.F. Δ	100	"	"
12" x 2" tee	2	2	MJ	SIGMA/BRS
12" x 12" tee	1	1	MJ	"
12" x 6" FHT	4	4	MJ	"
12" x 2" cross	1 Δ	1	MJ	"
2" cap	5 Δ	5	MJ	"
12" x 2" Reducer	1 Δ	1	MJ	"
12" x 1/2" HB	1 Δ	1	MJ	"
Fire Hydrants	4	4	MUELLER	SIGMA/BELAIR RD SUPPLY
4" valve	4	4	GATE	MUELLER
8" valve	5 Δ	5	"	"
12" valve	2	2	"	"
8" SDR 35	857 L.F. Δ		SDR 35	B.L.R. SUPPLY/GRIFIN PIPE
8" SDR (DIP)	1207 L.F. Δ		CL 82	GRIFIN PIPE
Manholes	10 Δ			FREDERICK PRECAST
Type 'B' D.M.	3 Δ			FREDERICK PRECAST
2" stopper	5 Δ			
1" W.H.C.	00 L.F. Δ		K. COPPER	BELAIR RD SUPPLY
3/4" Meter Vault	1 EA Δ			

NAME OF UTILITY CONTRACTOR: H.T.I.

SURVEY AND DRAFTING DIV. CHECKBOX: AS-BUILT DATE:

TYPE OF BUILDING	Commercial
NUMBER OF UNITS	4 Bulk Parcel 5 Open Space Lots
NUMBER OF S.H.C.'s	0
NUMBER OF W.H.C.'s	5 Δ
DRAINAGE AREA	Drain Run
TREATMENT PLANT	Little Patuxent Water Reclamation Plant



WATER AND SEWER CODE:
COUNTY USE

WATER No. E00
SEWER No. 3450000
TEST GRADIENT: 700 Pct

VICINITY MAP
SCALE: 1"=600'

CONTRACT No. 24 - 3858 - D

SNOWDEN RIVER BUSINESS PARK 1/1
PARCELS A2B, C, D, E, I & LOTS 6 THRU 10

HOWARD COUNTY, MARYLAND
DEPARTMENT OF PUBLIC WORKS

GENERAL NOTES

- PART I
- Approximate location of existing mains are shown. The contractor shall take all necessary precautions to protect existing mains and services and maintain uninterrupted supply. Any damage incurred shall be repaired immediately to the satisfaction of the Engineer at the Contractor's expense.
 - All horizontal controls are based on Maryland State Coordinates [North American Datum 1983 (NAD '83)].
 - All vertical controls are based on U.S.G.S. data.
 - All pipe elevations shown are invert elevations.
 - Clear all utilities by a minimum of 6". Clear all poles by 2'-0" minimum or tunnel as required. The owner has contacted the utility companies and has made arrangements for bracing of poles as shown on the drawings. In the event the contractor's work requires the bracing of additional poles, any cost incurred by the owner for bracing of additional poles or damages shall be deducted from money owed the contractor. The contractor shall coordinate with the utility companies to schedule the bracing of the poles.
 - For details not shown on the drawings, and for materials and construction methods use Howard County Design Manual, Volume IV, Standard Specifications and Detail for Construction (Latest Edition). The contractor shall have a copy of Volume IV on the job.
 - Where test pits have been made on existing utilities, they are noted by the symbol \oplus at the location of the test pit. A note or notes containing the results of the test pit or pits is included on the drawings. Existing utilities in the vicinity of the proposed work for which test pits have not been dug shall be located by the contractor two weeks in advance of construction operations at his own expense.
 - Contractor shall notify the following utility companies or agencies at least (5) working days before starting work shown on these plans:

State Highway Administration	410-531-5533
BGE Contract Services	410-850-4820
BGE Under Ground Damage Control	410-271-4007
Miss Utility	1-800-257-7777
Colonial Pipeline Co.	410-547-4110
Howard County Department of Public Works	
Bureau of Utilities	410-313-4900
Verizon	1-800-444-5200
 - Trees and shrubs are to be protected from damage to maximum extent. Trees and shrubs located within the construction strip are not to be removed or damaged by the contractor.
 - Contractor shall remove trees, stumps and roots along line of excavation. Payment for such removal shall be included in the unit price bid for construction of the main.
 - The contractor shall notify the Bureau of Highways, Howard County, at (410) 313-2450 at least five (5) working days before any open cut of any County road or boring/jacking operation on County roads for laying water/sewer mains or house connections. The approval of these drawings will constitute compliance with DPW requirement per Section 18.114(a) of the Howard County Code.
- PART II - WATER
- All water mains to be D.I.P. Class 52 unless otherwise noted.
 - Tops of all water mains to have a minimum of 3-1/2' cover unless otherwise noted.
 - Valves adjacent to tees shall be strapped to tees.
 - All fittings shall be buttressed or anchored with concrete in accordance with the Standard Details unless otherwise provided for on the drawings.
 - Fire hydrants shall be set to the bury line elevations shown on the drawings. All fire hydrants shall be restrained and buttressed with concrete in accordance with the Standard Details. Soil around the fire hydrant shall be compacted in accordance with Section 1000 and 1005 of the Standard Specifications.
 - The contractor shall not operate any water main valves on the existing water system.
 - All water house connections shall be for inside meter setting unless otherwise noted on plans or in specifications.
 - For sprinkler system for all townhomes or multi-family dwelling units should have a minimum of 1' connection with a 3/4" meter.
- PART III - SEWER
- All sewer mains shall be DIP and P.V.C. unless otherwise noted.
 - All manholes shall be 4' - 0" inside diameter unless otherwise noted.
 - Force mains shall be D.I.P. only.
 - Manholes shown with 12" and 16" walls are for brick manholes only.
 - Manholes designated W.T. in plan and profile shall have watertight frame and covers, Standard Detail G5.52. Where watertight frame and cover is used, set top of frame 1'-6" above finished grade unless otherwise noted on drawings.
 - House(s) with the symbol "C.N.S." indicates that cellar cannot be served.

Sediment Control Measures will be implemented in accordance with Section 219 of the Specifications & with Road Drawings Plan F-01-142; Drawings for Sediment & Erosion Control.

REVIEWED FOR HOWARD SOIL CONSERVATION DISTRICT AND MEETS TECHNICAL REQUIREMENT.

Jim Meyer 11/8/01
SIGNATURE DATE
U.S.D.A. NATURAL RESOURCES CONSERVATION SERVICE

THIS DEVELOPMENT PLAN IS APPROVED FOR SOIL EROSION AND SEDIMENT CONTROL BY THE HOWARD SOIL CONSERVATION DISTRICT.

APPROVED
John K. Roberts 11/8/01
HOWARD S.C.D. DATE

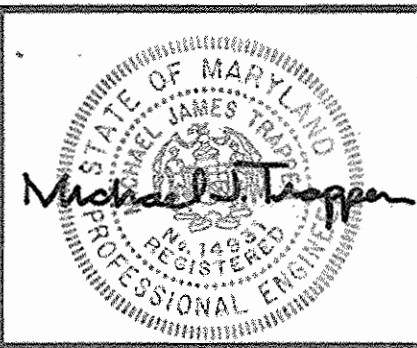
DEPARTMENT OF PUBLIC WORKS
HOWARD COUNTY, MARYLAND

John K. Roberts 11-2-01
CHIEF, BUREAU OF UTILITIES DATE

DEPARTMENT OF PLANNING AND ZONING
HOWARD COUNTY, MARYLAND

John D. ... 11/9/01
CHIEF, DEVELOPMENT ENGINEERING DIVISION DATE

GLW GUTSCHICK LITTLE & WEBER, P.A.
CIVIL ENGINEERS, LAND SURVEYORS, LAND PLANNERS, LANDSCAPE ARCHITECTS
3909 NATIONAL DRIVE - SUITE 250 - BURTONSVILLE OFFICE PARK
BURTONSVILLE, MARYLAND 20888
TEL: 301-421-4024 BALT: 410-380-1800 DC/VA: 301-989-2524 FAX: 301-421-4186



DES: WBJ			
DRN: WBJ			
CHK: WBJ	KCI	3	ASBUILT DATA SHOWN 6/21/07
DATE: Apr 2001	WBJ	Δ	Rev Vicinity Map Quantities Box & Title Block 01/20/04
	WBJ	Δ	Rev Quantities Box & No. of Conn's 8-22-03
	BY	NO	REVISION
			DATE

TITLE SHEET
AS SHOWN

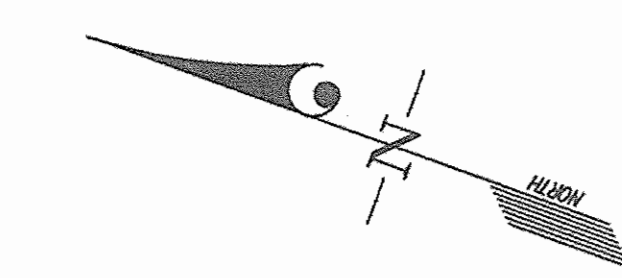
600' SCALE MAP NO. 27 BLOCK NO. 12, 10

SNOWDEN RIVER BUSINESS PARK
SECTION 1 AREA 1
PARCELS A2B, C, D, E, I & LOTS 6 THRU 10
HOWARD COUNTY, MARYLAND
ELECTION DISTRICT No. 6
CONTRACT No. 24 - 3858 - D

GLW FILE No. 99701

SCALE AS SHOWN

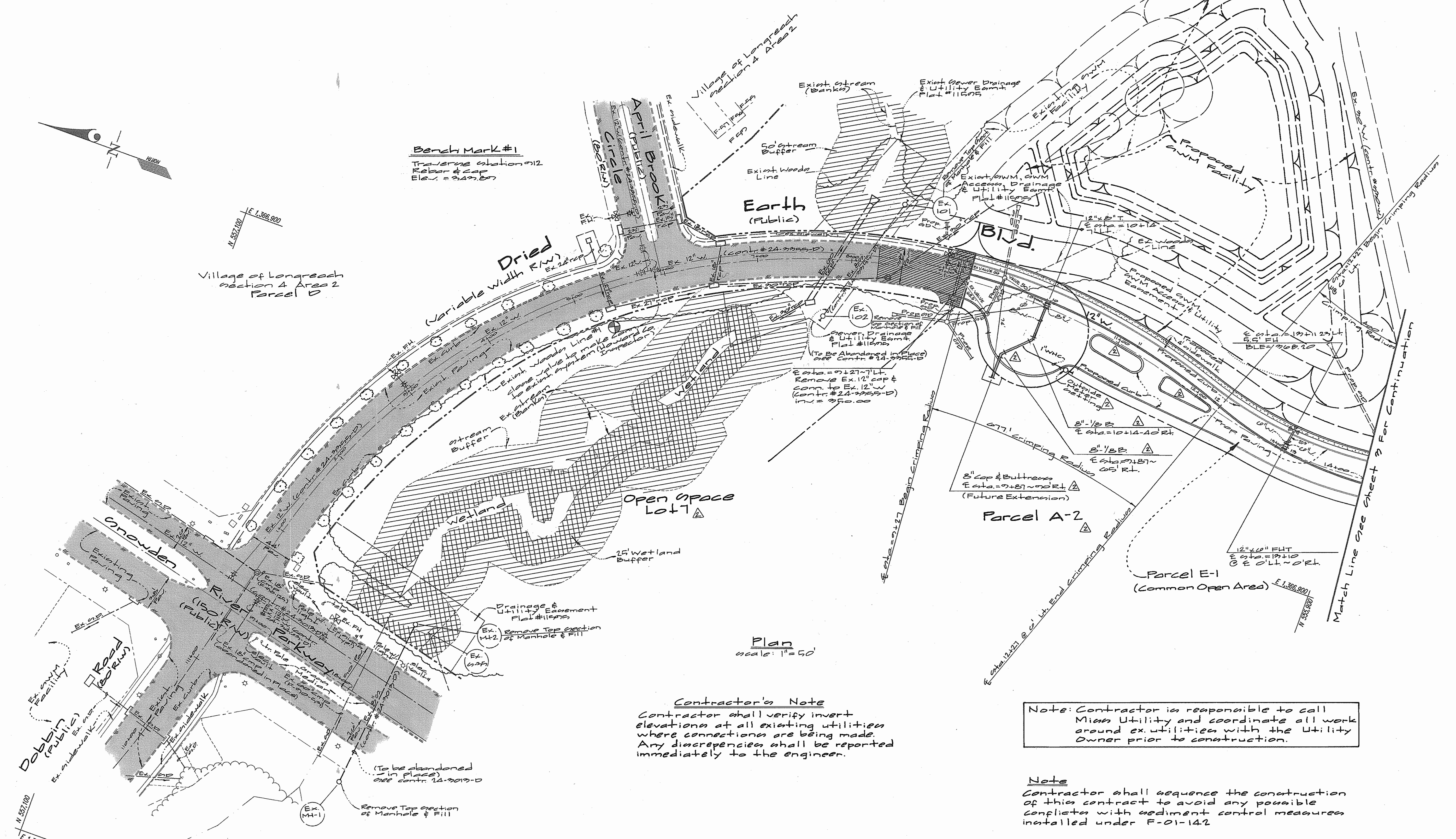
SHEET 1 OF 10



Village of Longreach
Section 4 Area 2
Parcel D

Bench Mark #1
Traverse station #12
Rebar & cap
Elev. = 344.87

Earth
(Public)



Plan
Scale: 1" = 50'

Contractor's Note
Contractor shall verify invert elevations at all existing utilities where connections are being made. Any discrepancies shall be reported immediately to the engineer.

Note: Contractor is responsible to call Miss Utility and coordinate all work around ex. utilities with the Utility Owner prior to construction.

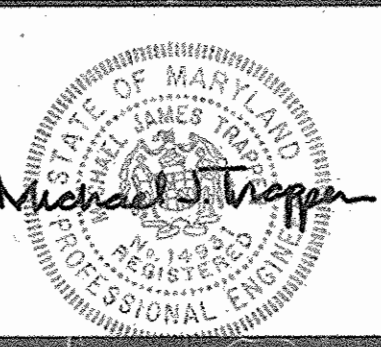
Note
Contractor shall sequence the construction of this contract to avoid any possible conflicts with sediment control measures installed under F-01-142.

For Profiles See Sheets 4 & 5

DEPARTMENT OF PUBLIC WORKS
HOWARD COUNTY, MARYLAND

DEPARTMENT OF PLANNING AND ZONING
HOWARD COUNTY, MARYLAND

GLW GUTSCHICK LITTLE & WEBER, P.A.
CIVIL ENGINEERS, LAND SURVEYORS, LAND PLANNERS, LANDSCAPE ARCHITECTS
3909 NATIONAL DRIVE - SUITE 250 - BURTONSVILLE OFFICE PARK
BURTONSVILLE, MARYLAND 20866
TEL: 301-421-4024 BAL: 410-880-1920 DC/VA: 301-989-2524 FAX: 301-421-4166



DES: wsj				
DRN: wsj				
CHK:	WSJ	Rev. Title Block Parcel Tabs Extend S.W.	01/20/04	
DATE: 2001	BY: NO	Rev. Title Block	02/20/03	
		REVISION	DATE	

WATER & SEWER PLAN
SCALE: 1" = 50'
600' SCALE MAP NO. 27 BLOCK NO. 12.12

SNOWDEN RIVER BUSINESS PARK
SECTION 1 AREA 1
PARCELS A-2, B-1, C-1, D-2, E-1, LOTS 6 THRU 10
HOWARD COUNTY, MARYLAND
ELECTION DISTRICT No. 6
CONTRACT No. 24-7858-D

SCALE AS SHOWN
SHEET 2 OF 16

Contractor's Note

Contractor shall verify invert elevations at all existing utilities where connections are being made. Any discrepancies shall be reported immediately to the engineer.

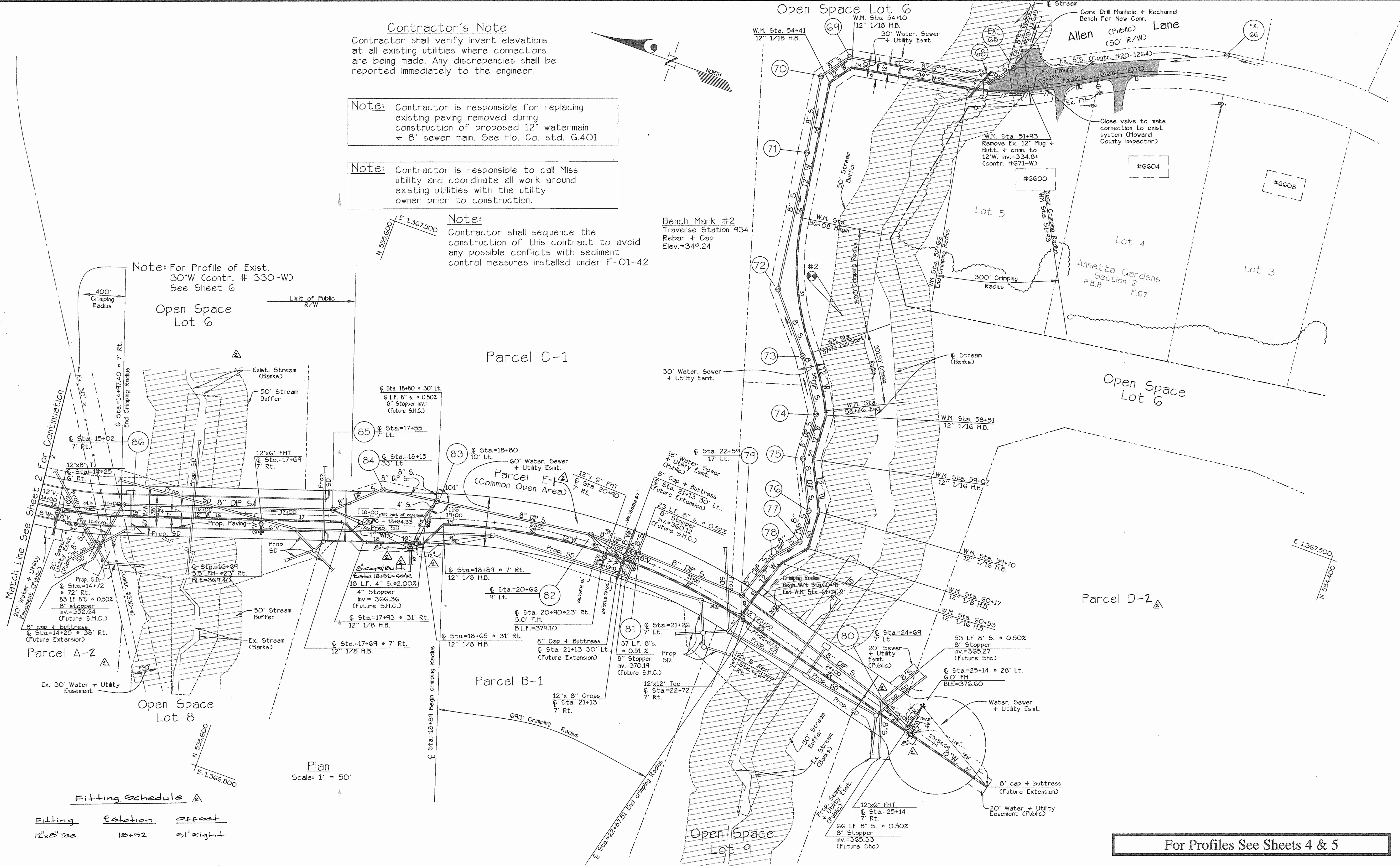
Note: Contractor is responsible for replacing existing paving removed during construction of proposed 12" watermain + 8" sewer main. See Ho. Co. std. G.401

Note: Contractor is responsible to call Miss utility and coordinate all work around existing utilities with the utility owner prior to construction.

Note: Contractor shall sequence the construction of this contract to avoid any possible conflicts with sediment control measures installed under F-01-42

Bench Mark #2
Traverse Station 934
Rebar + Cap
Elev.=349.24

Note: For Profile of Exist. 30"W (Contr. # 330-W) See Sheet G



Plan
Scale: 1" = 50'

Fitting Schedule

Fitting	Station	Offset
12"x8" Tee	18+52	31' Right

For Profiles See Sheets 4 & 5

DEPARTMENT OF PUBLIC WORKS
HOWARD COUNTY, MARYLAND

DEPARTMENT OF PLANNING AND ZONING
HOWARD COUNTY, MARYLAND

GLW GUTSCHICK LITTLE & WEBER, P.A.
CIVIL ENGINEERS, LAND SURVEYORS, LAND PLANNERS, LANDSCAPE ARCHITECTS
3909 NATIONAL DRIVE - SUITE 250 - BURTONVILLE, MARYLAND 20866
TEL: 301-421-4024 BALT: 410-880-1820 DC/WA: 301-989-2524 FAX: 301-421-4186



DES: MJT/Wsj					
DRN: Wsj					
CHK: Wsj	KCI	ASBUILT DATA SHOWN		cl/ol/af	
DATE: June, 2003	BY: NO	REVISION	DATE: 06/11/03		

WATER & SEWER PLAN
SCALE: 1" = 50'

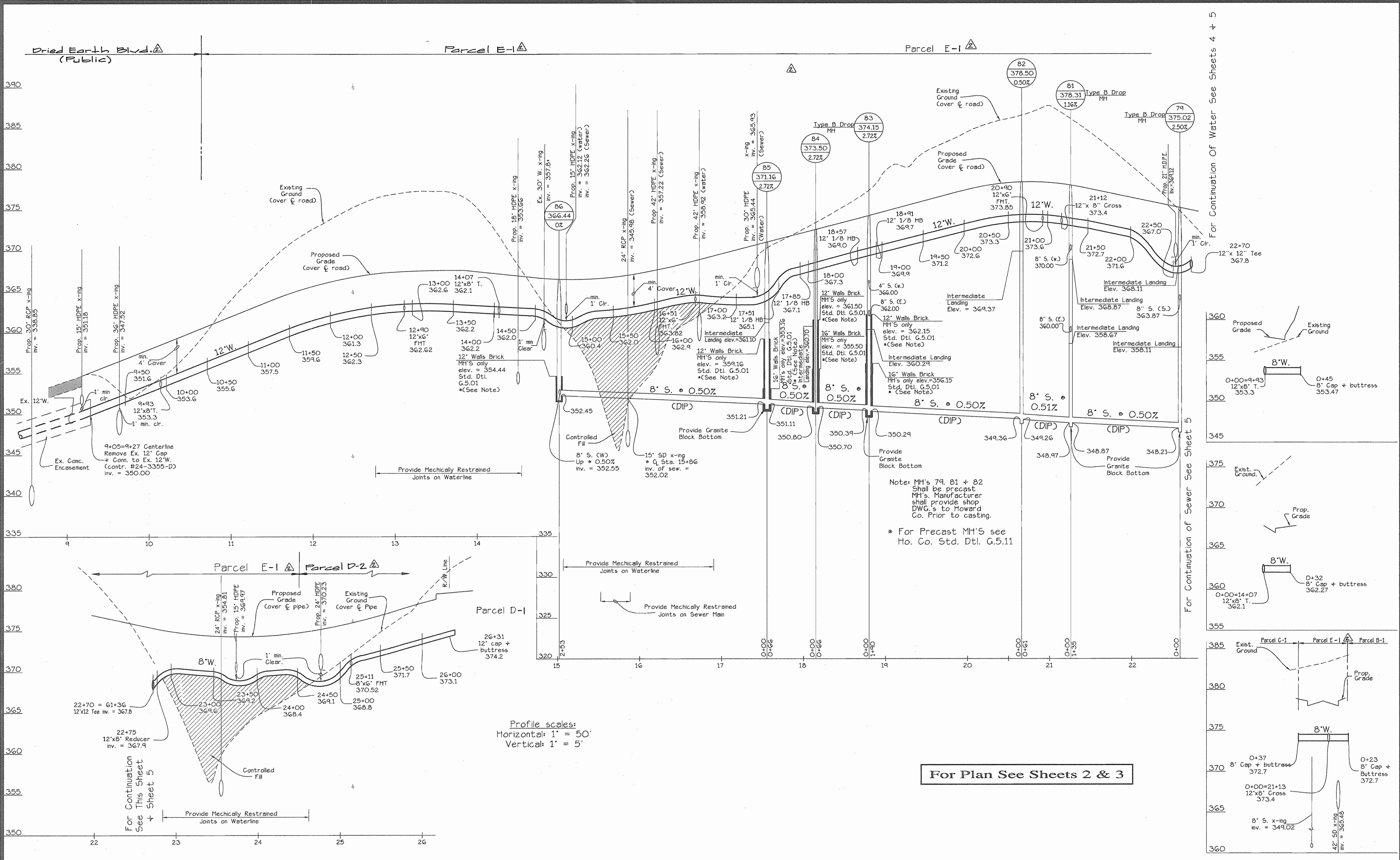
SNOWDEN RIVER BUSINESS PARK
SECTION 1 AREA 1
PARCELS A-2, B-1, C-1, D-2, E-1 & LOTS 6 THRU 10
HOWARD COUNTY, MARYLAND
ELECTION DISTRICT No. 6
CONTRACT No. 24-3858-1D

SCALE AS SHOWN
SHEET 3 OF 6

7-16-03
DATE

5/1/03
DATE

600' SCALE MAP NO. 37 BLOCK NO. 13.19



For Continuation of Water See Sheets 4 + 5

For Continuation of Sewer See Sheet 5

Profile scales:
Horizontal: 1" = 50'
Vertical: 1" = 5'

For Plan See Sheets 2 & 3

DEPARTMENT OF PUBLIC WORKS
HOWARD COUNTY, MARYLAND
R. H. B... 7-16-03
CHIEF, BUREAU OF UTILITIES

DEPARTMENT OF PLANNING AND ZONING
HOWARD COUNTY, MARYLAND
A. J. Damm... 8/4/03
CHIEF, DEVELOPMENT ENGINEERING DIVISION

GLW GUTSCHICK LITTLE & WEBER, P.A.
CIVIL ENGINEERS, LAND SURVEYORS, LAND PLANNERS, LANDSCAPE ARCHITECTS
3009 NATIONAL DRIVE - SUITE 250 - BIRTONSVILLE OFFICE PARK
BIRTONSVILLE, MARYLAND 20886
TEL: 301-421-4024 BALT: 410-880-1020 DC/VA: 301-988-2524 FAX: 301-421-4186



DES: MJT/Wsj			
DRN: Wsj			
CHK: RHT	Wsj	Rev. Title Block & Parcel IDs	02/20/03
DATE: 2003	Wsj	Revise Profile Cl. Sta. 17+55 to Sta. 22+72	06/11/03
	BY: NO	REVISION	DATE

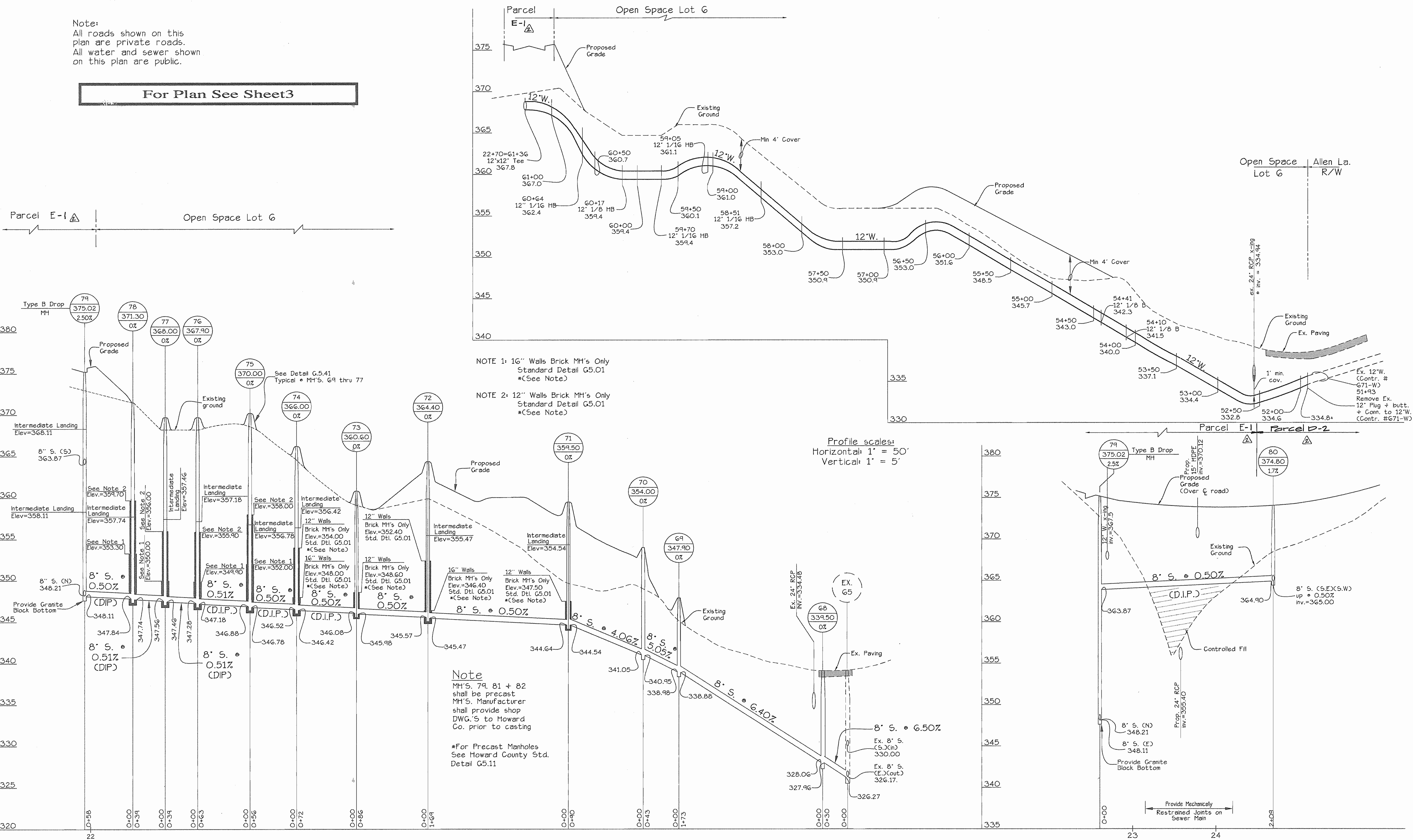
WATER & SEWER PLAN
SCALE: 1" = 50'
600' SCALE MAP NO. 37 BLOCK NO. 13.19

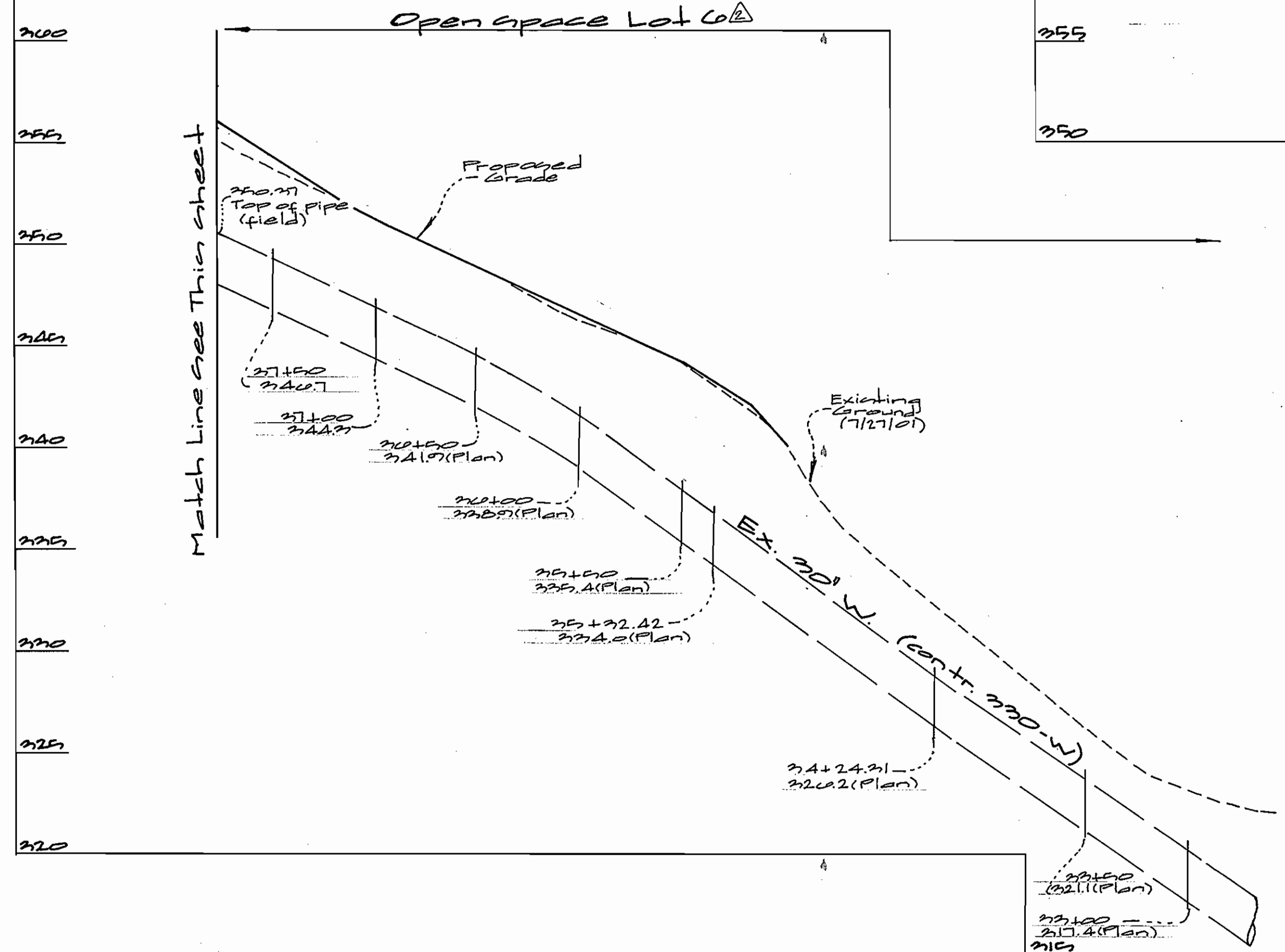
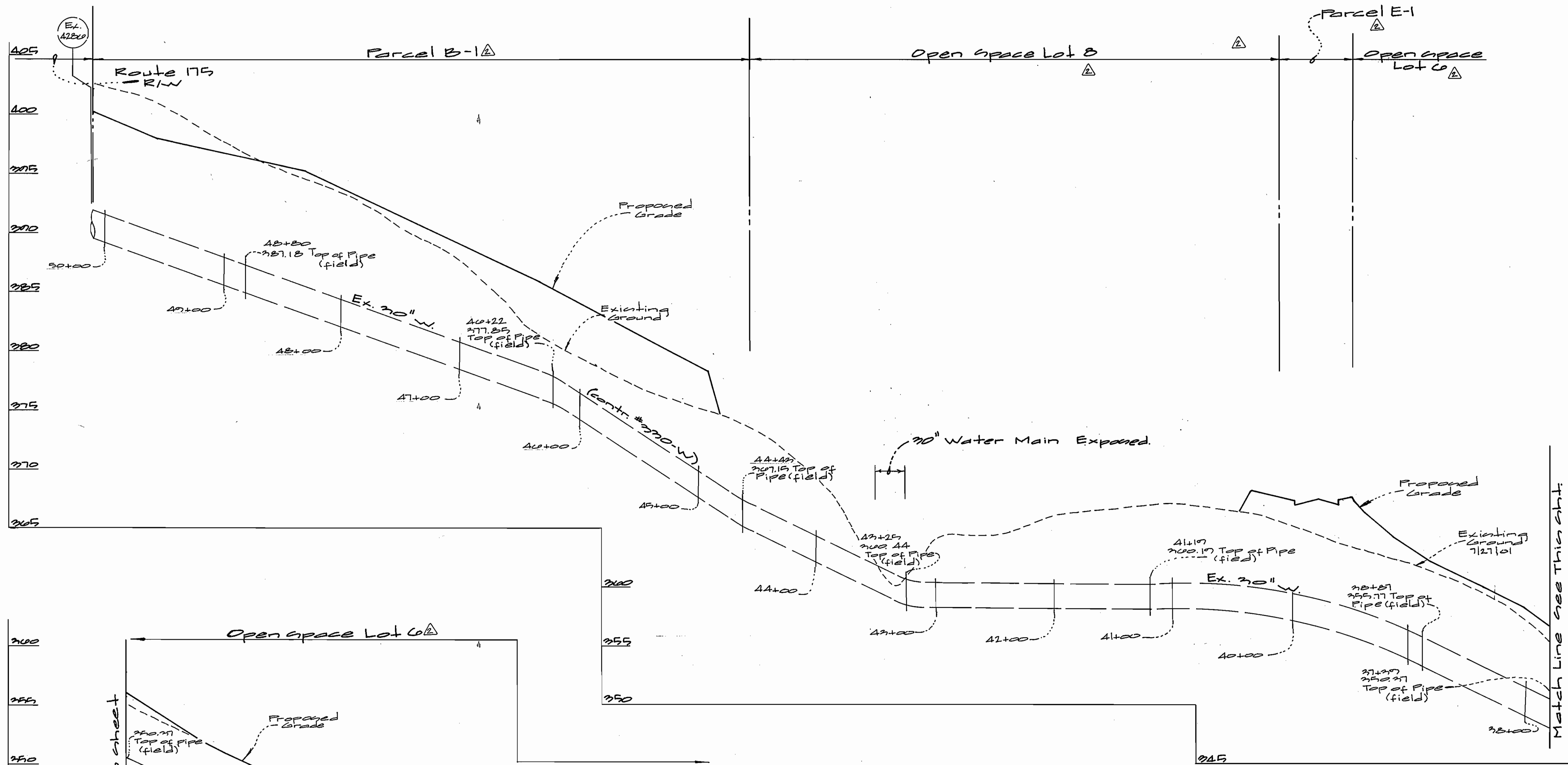
SNOWDEN RIVER BUSINESS PARK
SECTION 1 AREA 1
PARCELS A-2, B-1, C-1, D-2, E-1 & LOTS 6 THRU 10
HOWARD COUNTY, MARYLAND
ELECTION DISTRICT No. 6
CONTRACT No. 24-3858-D

SCALE AS SHOWN
SHEET 4 OF 6

Note:
 All roads shown on this plan are private roads.
 All water and sewer shown on this plan are public.

For Plan See Sheet 3





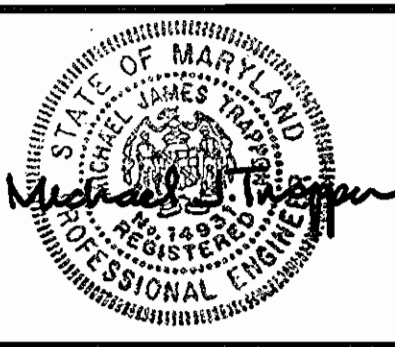
Profile
 scales: 1" = 50' horizontal
 1" = 5' vertical

Match Line see this sheet

DEPARTMENT OF PUBLIC WORKS
 HOWARD COUNTY, MARYLAND
 R. J. ... 11-2-01
 CHIEF, BUREAU OF UTILITIES DATE

DEPARTMENT OF PLANNING AND ZONING
 HOWARD COUNTY, MARYLAND
 ... 11/9/01
 CHIEF, DEVELOPMENT ENGINEERING DIVISION DATE

GLW GUTSCHICK LITTLE & WEBER, P.A.
 CIVIL ENGINEERS, LAND SURVEYORS, LAND PLANNERS, LANDSCAPE ARCHITECTS
 3909 NATIONAL DRIVE - SUITE 250 - BURTONSVILLE OFFICE PARK
 BURTONSVILLE, MARYLAND 20866
 TEL: 301-421-4024 BAL: 410-880-1820 DC/VA: 301-988-2524 FAX: 301-421-4186



DES:					
DRN:	WJ				
CHK:	WJ	Rev Title Block & Parcel IDs	07/20/04		
DATE:	Apr 2001	BY	NO	REVISION	DATE

EXISTING WATER PROFILE
 AS SHOWN
 600' SCALE MAP NO. 27 BLOCK NO. 12, 19

SNOWDEN RIVER BUSINESS PARK
 SECTION 1 AREA 1
 PARCELS A, B, C, D, E, F, LOTS 6 THRU 10
 HOWARD COUNTY, MARYLAND
 ELECTION DISTRICT No. 6
 CONTRACT No. 24-3858-D

SCALE AS SHOWN
 SHEET 2 OF 2