


GENERAL NOTES

PART I

- APPROXIMATE LOCATION OF EXISTING MAINS ARE SHOWN. THE CONTRACTOR SHALL TAKE ALL NECESSARY PRECAUTIONS TO PROTECT EXISTING MAINS AND SERVICES AND MAINTAIN UNINTERRUPTED SUPPLY. ANY DAMAGE INCURRED SHALL BE REPAIRED IMMEDIATELY TO THE SATISFACTION OF THE ENGINEER AT THE CONTRACTOR'S EXPENSE.
- ALL HORIZONTAL CONTROLS ARE BASED ON MARYLAND STATE COORDINATES.
- ALL VERTICAL CONTROLS ARE BASED ON U.S.G.S DATA.
- ALL PIPE ELEVATIONS SHOWN ARE INVERT ELEVATIONS.
- CLEAR ALL UTILITIES BY A MINIMUM OF 6". CLEAR ALL POLES BY 2'-0" MINIMUM OR TUNNEL AS REQUIRED. THE OWNER HAS CONTACTED THE UTILITY COMPANIES AND HAS MADE ARRANGEMENTS FOR BRACING OF POLES AS SHOWN ON DRAWINGS. IN THE EVENT THE CONTRACTOR'S WORK REQUIRES THE BRACING OF ADDITIONAL POLES, ANY COST INCURRED BY THE OWNER FOR BRACING OF ADDITIONAL POLES OR DAMAGES SHALL BE DEDUCTED FROM MONEY OWED THE CONTRACTOR. THE CONTRACTOR SHALL COORDINATE WITH THE UTILITY COMPANIES TO SCHEDULE THE BRACING OF THE POLES.
- FOR DETAILS NOT SHOWN ON THE DRAWINGS, AND FOR MATERIALS AND CONSTRUCTION METHODS USE HOWARD COUNTY DESIGN MANUAL, VOLUME IV, STANDARD SPECIFICATIONS AND DETAILS FOR CONSTRUCTION (LATEST EDITION). THE CONTRACTOR SHALL HAVE A COPY OF VOLUME IV ON THE JOB.
- WHERE TEST PITS HAVE BEEN MADE ON EXISTING UTILITIES, THEY ARE NOTED BY THE SYMBOL  AT THE LOCATION OF THE TEST PIT. A NOTE OR NOTES CONTAINING THE RESULTS OF THE TEST PIT OR PITS IS INCLUDED ON THE DRAWINGS. EXISTING UTILITIES IN THE VICINITY OF THE PROPOSED WORK FOR WHICH TEST PITS HAVE NOT BEEN DONE SHALL BE LOCATED BY THE CONTRACTOR TWO WEEKS IN ADVANCE OF CONSTRUCTION.
- THE CONTRACTOR SHALL NOTIFY THE FOLLOWING UTILITY COMPANIES OR AGENCIES AT LEAST FIVE WORKING DAYS BEFORE STARTING WORK SHOWN THESE PLANS:

C. & P. TELEPHONE	597-8585
A. T. & T.	865-3803
STATE HIGHWAY ADMINISTRATION	531-5533
B.G. & E. CO. CONTRACTOR SERVICES	850-4620
B.G. & E. CO. UNDER GROUND DAMAGE CONTROL	787-9068
MISSE UTILITY	1-800-257-7777
COLONIAL PIPELINE CO.	795-1590
HOWARD COUNTY DEPARTMENT OF PUBLIC WORKS BUREAU OF UTILITIES	313-4900
- TREES AND SHRUBS ARE TO BE PROTECTED FROM DAMAGE TO THE MAXIMUM EXTENT. TREES AND SHRUBS LOCATED WITHIN THE CONSTRUCTION STRIP ARE NOT TO BE REMOVED OR DAMAGED BY THE CONTRACTOR.
- THE CONTRACTOR SHALL REMOVE TREES, STUMPS AND ROOTS ALONG LINE OF EXCAVATION. PAYMENT FOR SUCH REMOVAL SHALL BE INCLUDED IN THE UNIT PRICE BID FOR THE CONSTRUCTION OF THE MAIN.
- THE CONTRACTOR SHALL NOTIFY THE BUREAU OF HIGHWAYS, HOWARD COUNTY, AT (410) 313-2450 AT LEAST FIVE WORKING DAYS BEFORE ANY OPEN CUT OF ANY COUNTY ROAD OR BORING/JACKING OPERATION IN COUNTY ROADS FOR LAYING WATER/SEWER MAIN OR HOUSE CONNECTIONS. THE APPROVAL OF THESE DRAWINGS WILL CONSTITUTE COMPLIANCE WITH DPM REQUIREMENTS PER SECTION 18.114(a) OF THE HOWARD COUNTY CODE.

PART II - WATER

- ALL WATER MAINS TO BE D.I.P. CLASS 52 UNLESS OTHERWISE NOTED.
- TOPS OF ALL WATER MAINS TO HAVE A MINIMUM OF 3-1/2' COVER UNLESS OTHERWISE NOTED.
- VALVES ADJACENT TO TEES SHALL BE STRAPPED TO TEES.
- ALL FITTINGS SHALL BE BUTTRESSED OR ANCHORED WITH CONCRETE IN ACCORDANCE WITH THE STANDARD DETAILS UNLESS OTHERWISE PROVIDED FOR ON THE DRAWINGS.
- FIRE HYDRANTS SHALL BE SET TO THE BURY LINE ELEVATIONS SHOWN ON THE DRAWINGS. ALL FIRE HYDRANTS SHALL BE RESTRAINED AND BUTTRESSED WITH CONCRETE IN ACCORDANCE WITH STANDARD DETAILS. SOIL AROUND FIRE HYDRANT SHALL BE COMPACTED IN ACCORDANCE WITH SECTION 1000 AND 1005 OF THE STANDARD SPECIFICATIONS.
- THE CONTRACTOR SHALL NOT OPERATE ANY WATER MAIN VALVES ON THE EXISTING WATER SYSTEM.
- ALL WATER HOUSE CONNECTIONS SHALL BE FOR INSIDE METER SETTING UNLESS OTHERWISE NOTED ON PLANS OR IN SPECIFICATIONS.

DORSEY MANOR

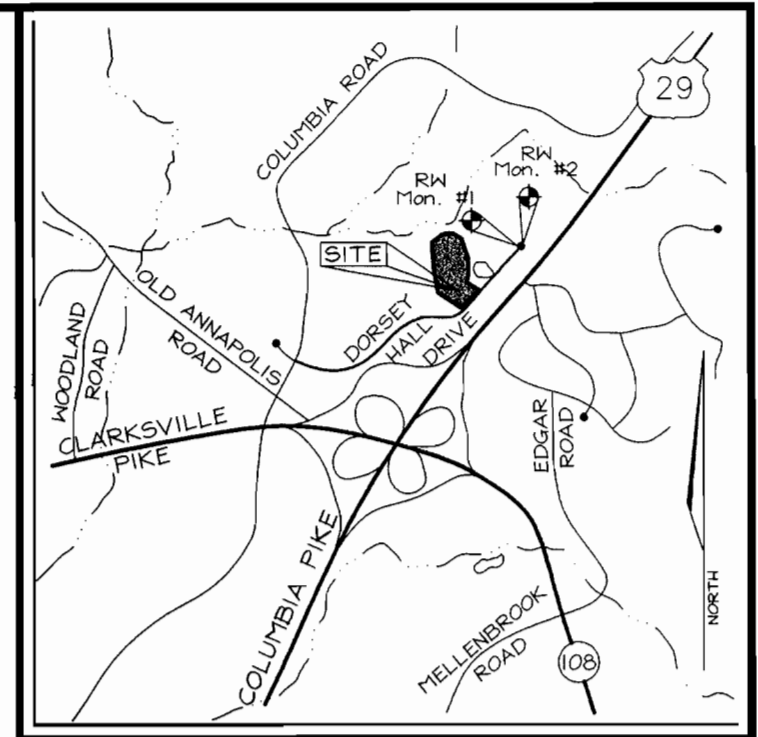
PUBLIC WATER PLAN

HOWARD COUNTY, MARYLAND

CONTRACT NO. 44-3829-D

BENCHMARKS

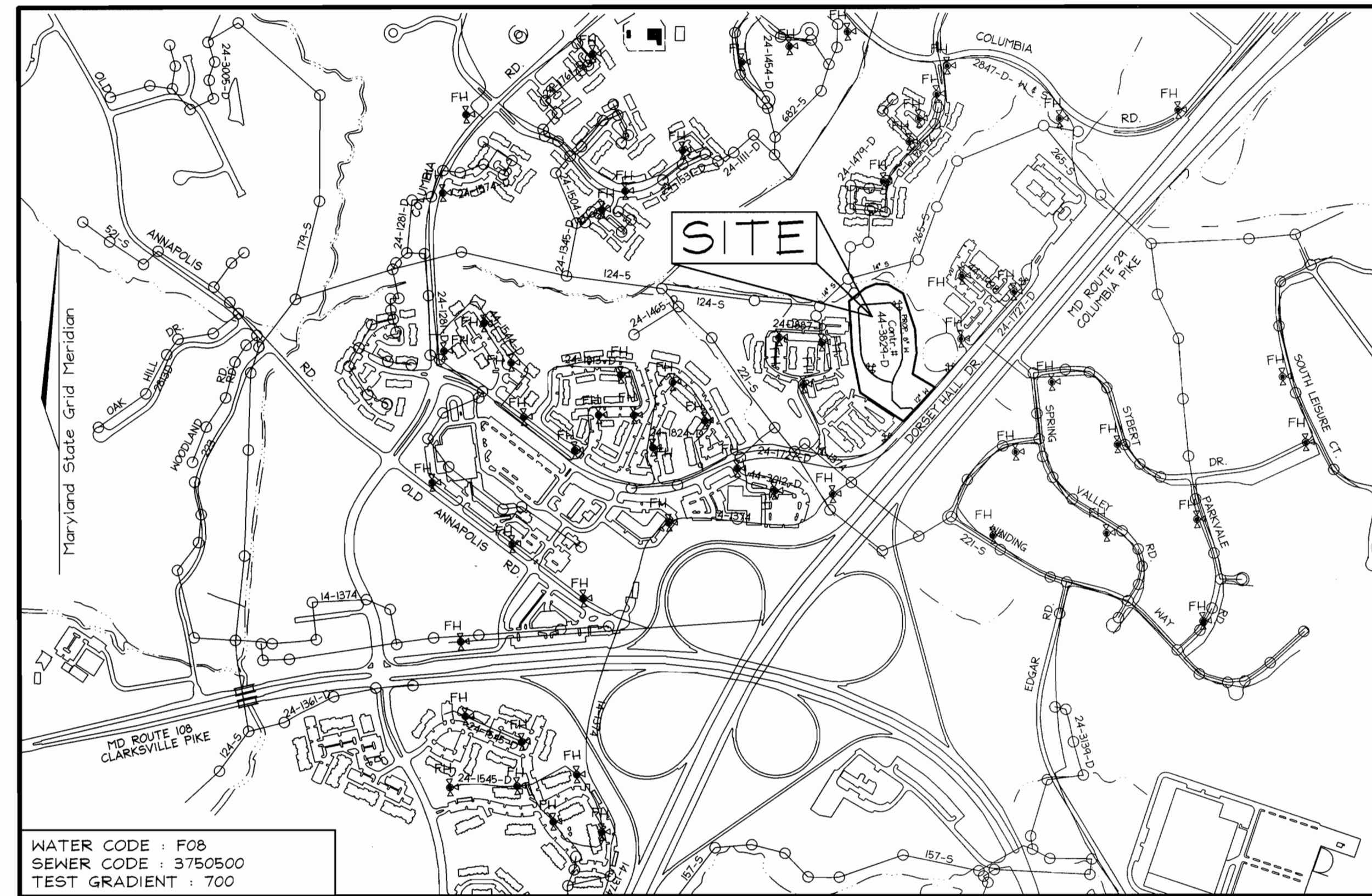
- R/W Monument #1
Rebor and Cap
NW side of Dorsey Hall Drive Cul-de-sac
Elev. 361.36
- R/W Monument #2
Rebor and Cap
NE side of Dorsey Hall Drive Cul-de-sac
Elev. 361.41



VICINITY MAP
SCALE: 1"=2000'

QUANTITIES

NAME OF UTILITY CONTRACTOR :				
SURVEY AND DRAFTING DIVISION AS-BUILT DATE :				
ITEMS	QUANTITIES ESTIMATED	AS-BUILT		
		QUANTITIES	TYPE	MANUFACTURER/SUPPLIER
FIRE HYDRANT	2			
1" WHC	484LF			
6" WHC	121LF			
6" VALVE	4			
8" VALVE	3			
8" 1/2 HB	7			
8" WATER	1,444LF			
8"x8" Tee	1			
8"x6" Tee	6			



LOCATION PLAN
SCALE : 1"=100'

TYPE OF BUILDING:	COMMERCIAL OFFICES
NO. OF LOTS/PARCELS:	1
NO. OF WATER HOUSE CONNECTIONS:	17
NO. OF SEWER HOUSE CONNECTIONS:	0
DRAINAGE AREA:	LITTLE PATUXENT
TREATMENT PLANT:	PATAPOCO ROUTE 108 VIA PUMPING STATION

SEDIMENT CONTROL MEASURES WILL BE IMPLEMENTED IN ACCORDANCE WITH SECTION 219 OF THE SPECIFICATIONS AND WITH SITE DEVELOPMENT PLAN SDP-00-071

THIS DEVELOPMENT IS APPROVED FOR SOIL EROSION AND SEDIMENT CONTROL BY THE HOWARD COUNTY SOIL CONSERVATION DISTRICT.

REVIEWED FOR HOWARD COUNTY SOIL CONSERVATION DISTRICT AND MEETS TECHNICAL REQUIREMENTS.

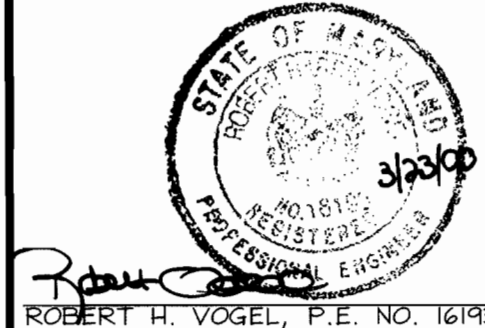
[Signature] 4/7/00
SOIL CONSERVATION DISTRICT DATE

[Signature] 4/7/00
U.S. SOIL CONSERVATION DISTRICT DATE
N.R.C.S.

DEPARTMENT OF PUBLIC WORKS
HOWARD COUNTY, MARYLAND

DEPARTMENT OF PLANNING & ZONING
HOWARD COUNTY, MARYLAND

VOGEL & ASSOCIATES
ENGINEERS-SURVEYORS-PLANNERS
3691 Park Avenue, Suite 101 • Ellicott City, Maryland 21043
Tel 410.461.5828 Fax 410.465.3966

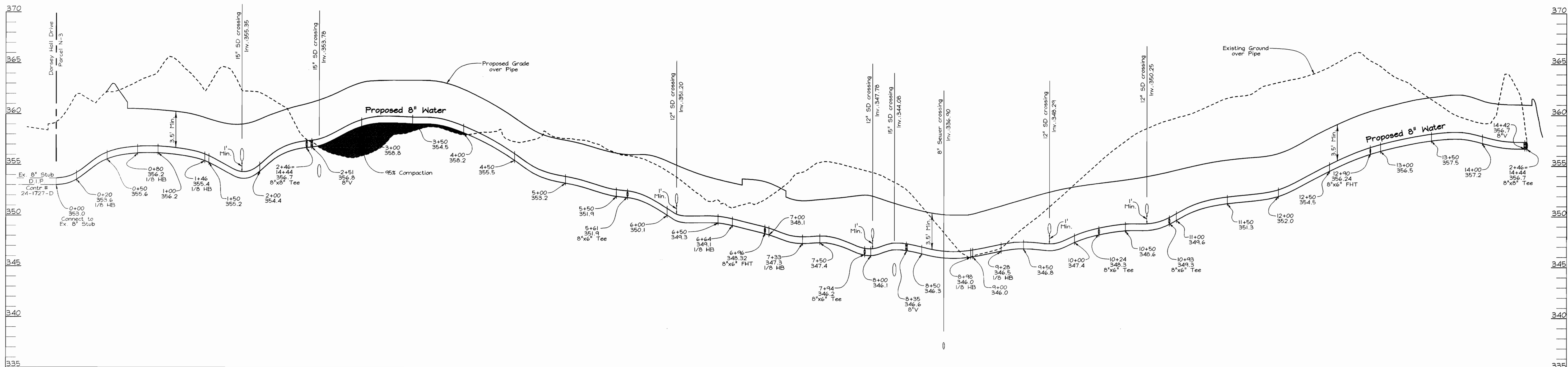


DES: PS					
DRN: RLP					
CHK: JCO					
DATE: March 2000	BY NO.	REVISION	DATE	600' SCALE MAP NO. 30	BLOCK NO. 4

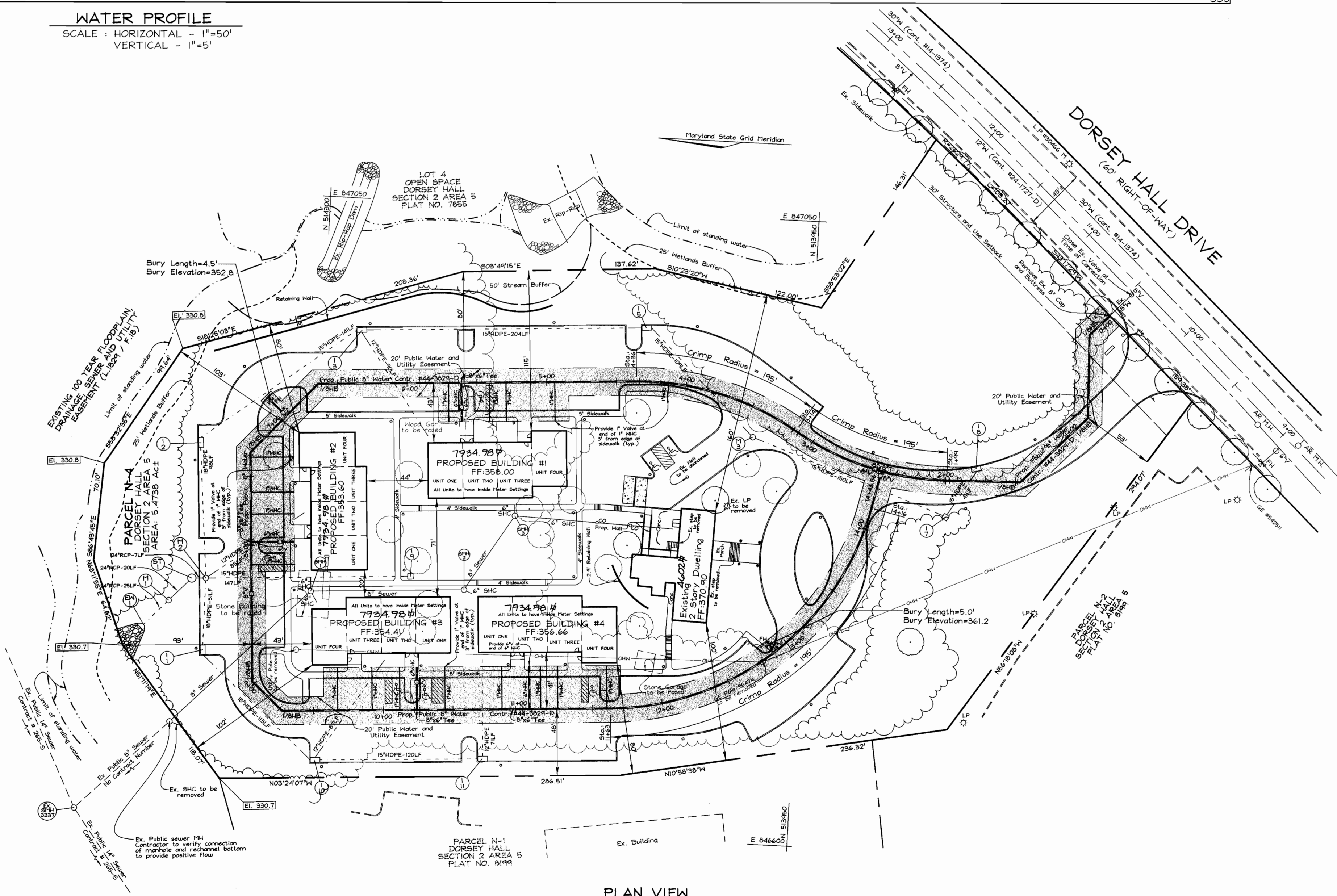
TITLE SHEET

DORSEY MANOR
DORSEY HALL, SECTION 2, AREA 5, PARCEL N-3
DORSEY MANOR EXECUTIVE OFFICES
CONTRACT #44-3829-D
TAX MAP #30 GRID #4
2ND ELECTION DISTRICT
PARCEL N-3
HOWARD COUNTY, MARYLAND

SCALE AS SHOWN
SHEET 1 OF 2



WATER PROFILE
 SCALE: HORIZONTAL - 1"=50'
 VERTICAL - 1"=5'



PLAN VIEW
 SCALE 1"=50'

DEPARTMENT OF PUBLIC WORKS
 HOWARD COUNTY, MARYLAND
 Robert Beaman
 CHIEF, BUREAU OF UTILITIES
 DATE 3-30-00

DEPARTMENT OF PLANNING & ZONING
 HOWARD COUNTY, MARYLAND
 [Signature]
 CHIEF, DEVELOPMENT ENGINEERING DIVISION
 DATE 4/1/00

VOGEL & ASSOCIATES
 ENGINEERS-SURVEYORS-PLANNERS
 3691 Park Avenue, Suite 101 • Ellicott City, Maryland 21043
 Tel 410.461.5828 Fax 410.465.3966
 [Professional Seal]
 ROBERT H. VOGEL, P.E. NO. 16193

DES: PS	BY NO.	REVISION	DATE
DRN: TR			
CHK: JCO			
DATE: March 2000			


WATER PLAN AND PROFILES
 600' SCALE MAP NO. 30 BLOCK NO. 4

DORSEY MANOR
 DORSEY HALL, SECTION 2, AREA 5, PARCEL N-3
 DORSEY MANOR EXECUTIVE OFFICES
CONTRACT #44-3829-D
 TAX MAP #30 GRID #4 PARCEL N-3
 2ND ELECTION DISTRICT HOWARD COUNTY, MARYLAND

SCALE AS SHOWN
 SHEET 2 OF 2

GENERAL NOTES

PART I

- APPROXIMATE LOCATION OF EXISTING MAINS ARE SHOWN. THE CONTRACTOR SHALL TAKE ALL NECESSARY PRECAUTIONS TO PROTECT EXISTING MAINS AND SERVICES AND MAINTAIN UNINTERRUPTED SUPPLY. ANY DAMAGE INCURRED SHALL BE REPAIRED IMMEDIATELY TO THE SATISFACTION OF THE ENGINEER AT THE CONTRACTOR'S EXPENSE.
- ALL HORIZONTAL CONTROLS ARE BASED ON MARYLAND STATE COORDINATES.
- ALL VERTICAL CONTROLS ARE BASED ON U.S.G.S DATA.
- ALL PIPE ELEVATIONS SHOWN ARE INVERT ELEVATIONS.
- CLEAR ALL UTILITIES BY A MINIMUM OF 6". CLEAR ALL POLES BY 2'-0" MINIMUM OR TUNNEL AS REQUIRED. THE OWNER HAS CONTACTED THE UTILITY COMPANIES AND HAS MADE ARRANGEMENTS FOR BRACING OF POLES AS SHOWN ON DRAWINGS. IN THE EVENT THE CONTRACTOR'S WORK REQUIRES THE BRACING OF ADDITIONAL POLES, ANY COST INCURRED BY THE OWNER FOR BRACING OF ADDITIONAL POLES OR DAMAGES SHALL BE DEDUCTED FROM MONEY OWED THE CONTRACTOR. THE CONTRACTOR SHALL COORDINATE WITH THE UTILITY COMPANIES TO SCHEDULE THE BRACING OF THE POLES.
- FOR DETAILS NOT SHOWN ON THE DRAWINGS, AND FOR MATERIALS AND CONSTRUCTION METHODS USE HOWARD COUNTY DESIGN MANUAL, VOLUME IV, STANDARD SPECIFICATIONS AND DETAILS FOR CONSTRUCTION (LATEST EDITION). THE CONTRACTOR SHALL HAVE A COPY OF VOLUME IV ON THE JOB.
- WHERE TEST PITS HAVE BEEN MADE ON EXISTING UTILITIES, THEY ARE NOTED BY THE SYMBOL  AT THE LOCATION OF THE TEST PIT. A NOTE OR NOTES CONTAINING THE RESULTS OF THE TEST PIT OR PITS IS INCLUDED ON THE DRAWINGS. EXISTING UTILITIES IN THE VICINITY OF THE PROPOSED WORK FOR WHICH TEST PITS HAVE NOT BEEN DONE SHALL BE LOCATED BY THE CONTRACTOR TWO WEEKS IN ADVANCE OF CONSTRUCTION.
- THE CONTRACTOR SHALL NOTIFY THE FOLLOWING UTILITY COMPANIES OR AGENCIES AT LEAST FIVE WORKING DAYS BEFORE STARTING WORK SHOWN THESE PLANS:

C. & P. TELEPHONE	597-8585
A.T. & T.	865-3803
STATE HIGHWAY ADMINISTRATION	531-5533
B.G. & E. CO. CONTRACTOR SERVICES	850-4620
B.G. & E. CO. UNDER GROUND DAMAGE CONTROL	787-9068
MISS UTILITY	1-800-257-7777
COLONIAL PIPELINE CO.	795-1930
HOWARD COUNTY DEPARTMENT OF PUBLIC WORKS BUREAU OF UTILITIES	313-4900
- TREES AND SHRUBS ARE TO BE PROTECTED FROM DAMAGE TO THE MAXIMUM EXTENT. TREES AND SHRUBS LOCATED WITHIN THE CONSTRUCTION STRIP ARE NOT TO BE REMOVED OR DAMAGED BY THE CONTRACTOR.
- THE CONTRACTOR SHALL REMOVE TREES, STUMPS AND ROOTS ALONG LINE OF EXCAVATION. PAYMENT FOR SUCH REMOVAL SHALL BE INCLUDED IN THE UNIT PRICE BID FOR THE CONSTRUCTION OF THE MAIN.
- THE CONTRACTOR SHALL NOTIFY THE BUREAU OF HIGHWAYS, HOWARD COUNTY, AT (410) 313-2450 AT LEAST FIVE WORKING DAYS BEFORE ANY OPEN CUT OF ANY COUNTY ROAD OR BORING/JACKING OPERATION IN COUNTY ROADS FOR LAYING WATER/SEWER MAIN OR HOUSE CONNECTIONS. THE APPROVAL OF THESE DRAWINGS WILL CONSTITUTE COMPLIANCE WITH DPW REQUIREMENTS PER SECTION 18.114(a) OF THE HOWARD COUNTY CODE.

PART II - WATER

- ALL WATER MAINS TO BE D.I.P. CLASS 52 UNLESS OTHERWISE NOTED.
- TOPS OF ALL WATER MAINS TO HAVE A MINIMUM OF 3-1/2' COVER UNLESS OTHERWISE NOTED.
- VALVES ADJACENT TO TEES SHALL BE STRAPPED TO TEES.
- ALL FITTINGS SHALL BE BUTTRESSED OR ANCHORED WITH CONCRETE IN ACCORDANCE WITH THE STANDARD DETAILS UNLESS OTHERWISE PROVIDED FOR ON THE DRAWINGS.
- FIRE HYDRANTS SHALL BE SET TO THE BURY LINE ELEVATIONS SHOWN ON THE DRAWINGS. ALL FIRE HYDRANTS SHALL BE RESTRAINED AND BUTTRESSED WITH CONCRETE IN ACCORDANCE WITH STANDARD DETAILS. SOIL AROUND FIRE HYDRANT SHALL BE COMPACTED IN ACCORDANCE WITH SECTION 1000 AND 1005 OF THE STANDARD SPECIFICATIONS.
- THE CONTRACTOR SHALL NOT OPERATE ANY WATER MAIN VALVES ON THE EXISTING WATER SYSTEM.
- ALL WATER HOUSE CONNECTIONS SHALL BE FOR INSIDE METER SETTING UNLESS OTHERWISE NOTED ON PLANS OR IN SPECIFICATIONS.

DORSEY MANOR

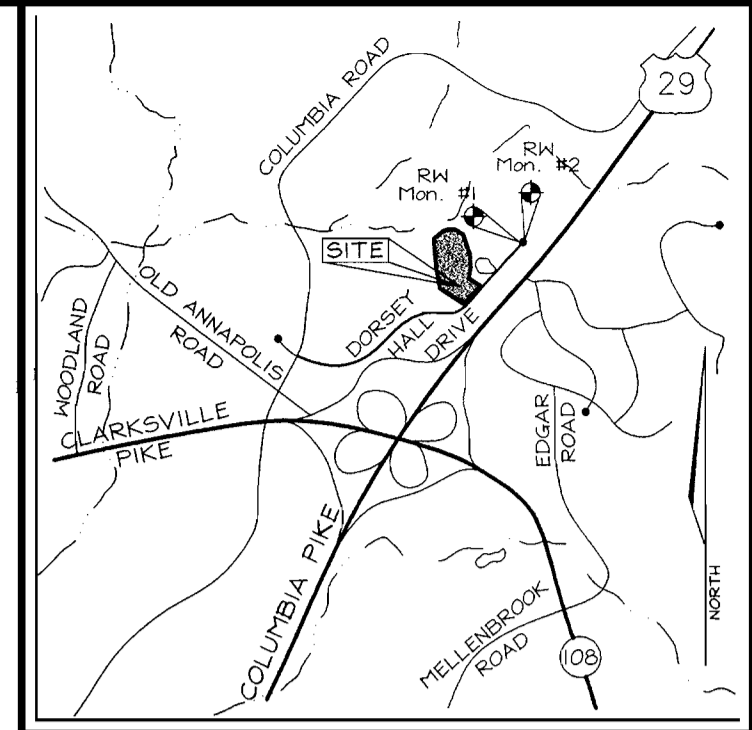
PUBLIC WATER PLAN

HOWARD COUNTY, MARYLAND

CONTRACT NO. 44-3829-D

BENCHMARKS

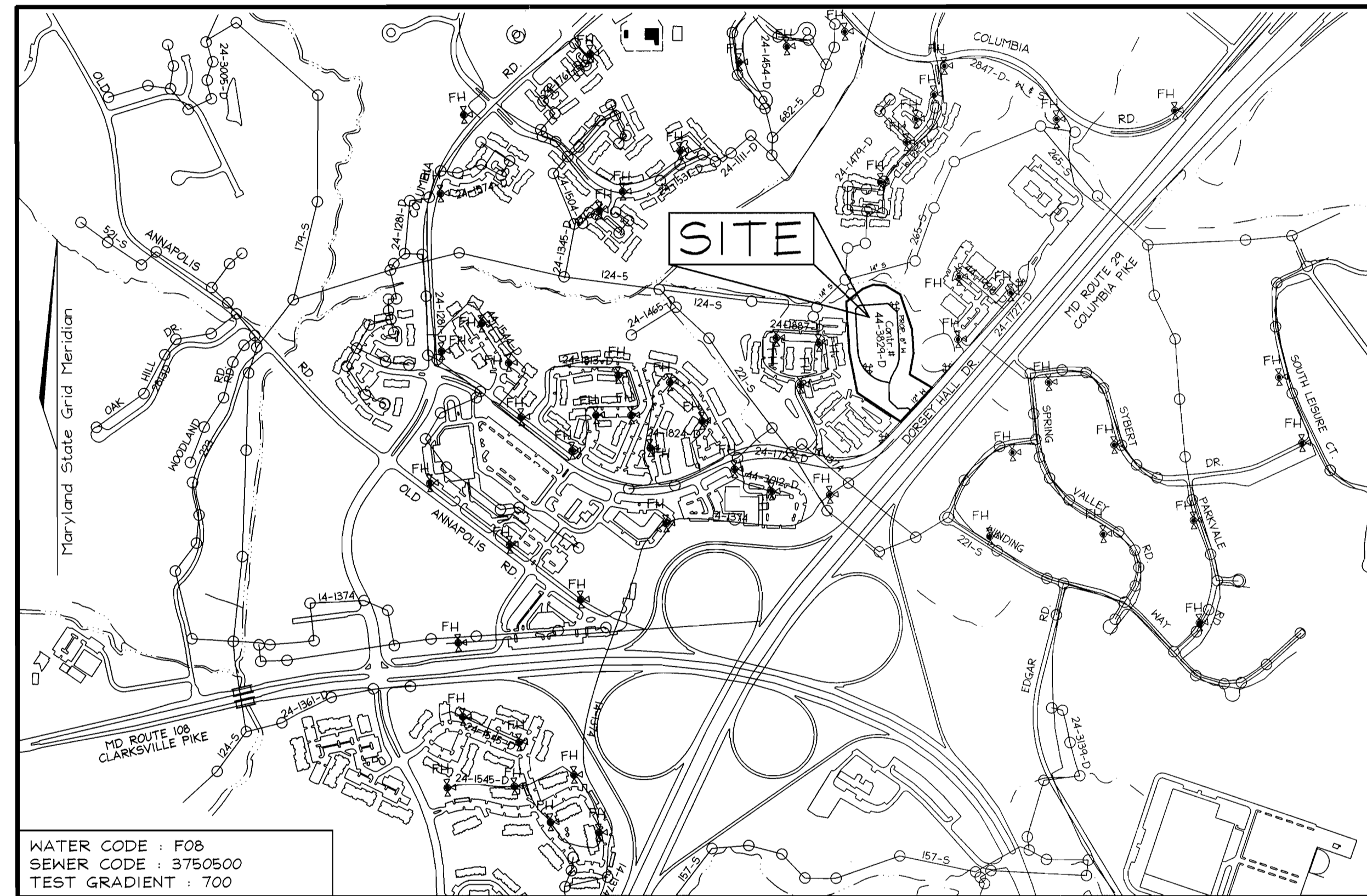
- R/W Monument #1
Rebar and Cap
NW side of Dorsey Hall Drive Cul-de-sac
Elev. 361.36
- R/W Monument #2
Rebar and Cap
NE side of Dorsey Hall Drive Cul-de-sac
Elev. 361.41



VICINITY MAP
SCALE: 1"=2000'

QUANTITIES

NAME OF UTILITY CONTRACTOR : CONSOLIDATED CONSTRUCTION SERVICES, INC.				
SURVEY AND DRAFTING DIVISION AS-BUILT DATE :				
ITEMS	QUANTITIES ESTIMATED	AS-BUILT		
		QUANTITIES	TYPE	MANUFACTURER/SUPPLIER
FIRE HYDRANT	2	2	DIP	MUELLER CO./BELAIR RD SUPPLY
1" WHC	484LF	424.5 L.F.	COPPER	READING TUBE / " " "
6" WHC	121LF	120 L.F.	DIP	U.S. PIPE & FOUNDRY MOELLER CO. / " " "
6" VALVE	4	4	"	" " / " " "
8" VALVE	3	3	"	" " / " " "
8" 1/8 HB	7	7	"	TYLER / " " "
8" WATER	1,444LF	1,442 L.F.	"	U.S. PIPE & FOUNDRY / " " "
8"x8" Tee	1	1	"	TYLER / " " "
8"x6" Tee	6	6	"	TYLER / " " "


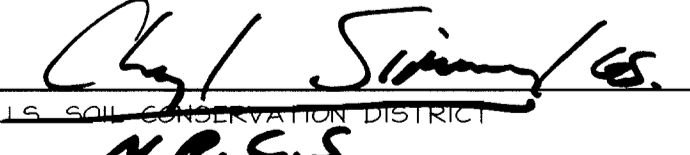


LOCATION PLAN
SCALE : 1"=100'

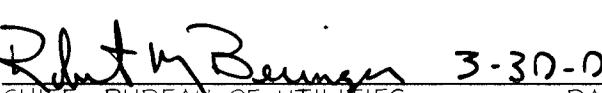
WATER CODE : F08
SEWER CODE : 3750500
TEST GRADIENT : 700

TYPE OF BUILDING:	COMMERCIAL OFFICES
NO. OF LOTS/PARCELS:	1
NO. OF WATER HOUSE CONNECTIONS:	17
NO. OF SEWER HOUSE CONNECTIONS:	0
DRAINAGE AREA:	LITTLE PATENT
TREATMENT PLANT:	CATAWAGO ROUTE 100 VIA PUMPING STATION


SEDIMENT CONTROL MEASURES WILL BE IMPLEMENTED IN ACCORDANCE WITH SECTION 219 OF THE SPECIFICATIONS AND WITH SITE DEVELOPMENT PLAN SDP-00-071

THIS DEVELOPMENT IS APPROVED FOR SOIL EROSION AND SEDIMENT CONTROL BY THE HOWARD COUNTY SOIL CONSERVATION DISTRICT.	REVIEWED FOR HOWARD COUNTY SOIL CONSERVATION DISTRICT AND MEETS TECHNICAL REQUIREMENTS.
 4/7/00 SOIL CONSERVATION DISTRICT DATE	 4/7/00 U.S. SOIL CONSERVATION DISTRICT DATE

DEPARTMENT OF PUBLIC WORKS
HOWARD COUNTY, MARYLAND

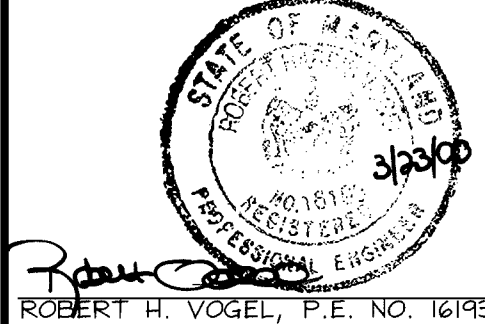
 3-30-00
CHIEF, BUREAU OF UTILITIES DATE

DEPARTMENT OF PLANNING & ZONING
HOWARD COUNTY, MARYLAND

 4/1/00
CHIEF, DEVELOPMENT ENGINEERING DIVISION DATE

VOGEL & ASSOCIATES
ENGINEERS-SURVEYORS-PLANNERS

3691 Park Avenue, Suite 101 • Ellicott City, Maryland 21043
Tel 410.461.5828 Fax 410.465.3966



ROBERT H. VOGGEL, P.E. NO. 16193

DES: PS			
DRN: RLP			
CHK: JCO			
DATE: March 2000	KCI 1	ASBUILT CONDITIONS ADDED TO PLAN	02/01/01
	BY NO.	REVISION	DATE

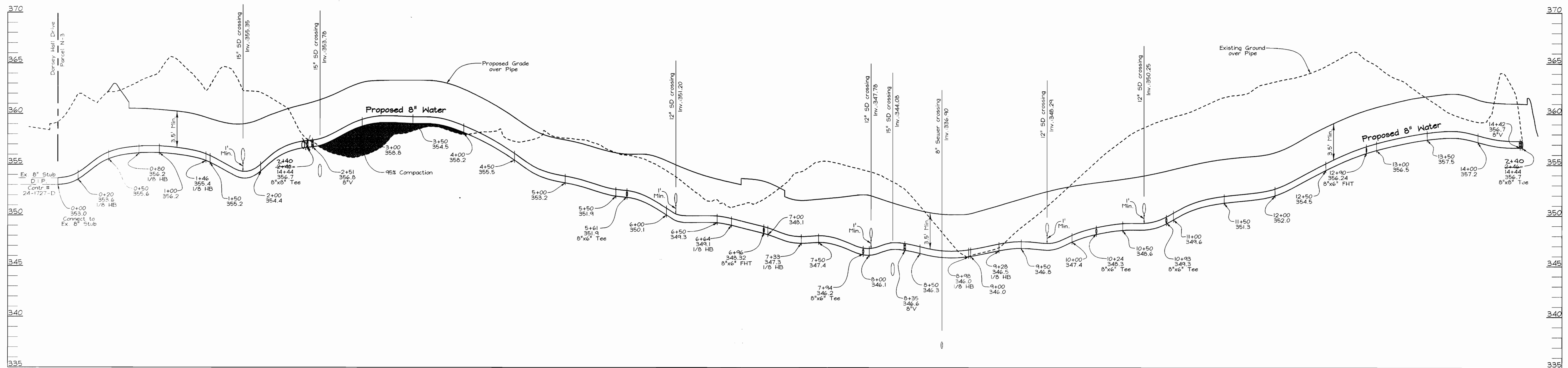
TITLE SHEET	
600' SCALE MAP NO. 30	BLOCK NO. 4

DORSEY MANOR
DORSEY HALL, SECTION 2, AREA 5, PARCEL N-3
DORSEY MANOR EXECUTIVE OFFICES
CONTRACT #44-3829-D

TAX MAP #30 GRID #4
2ND ELECTION DISTRICT

PARCEL N-3
HOWARD COUNTY, MARYLAND

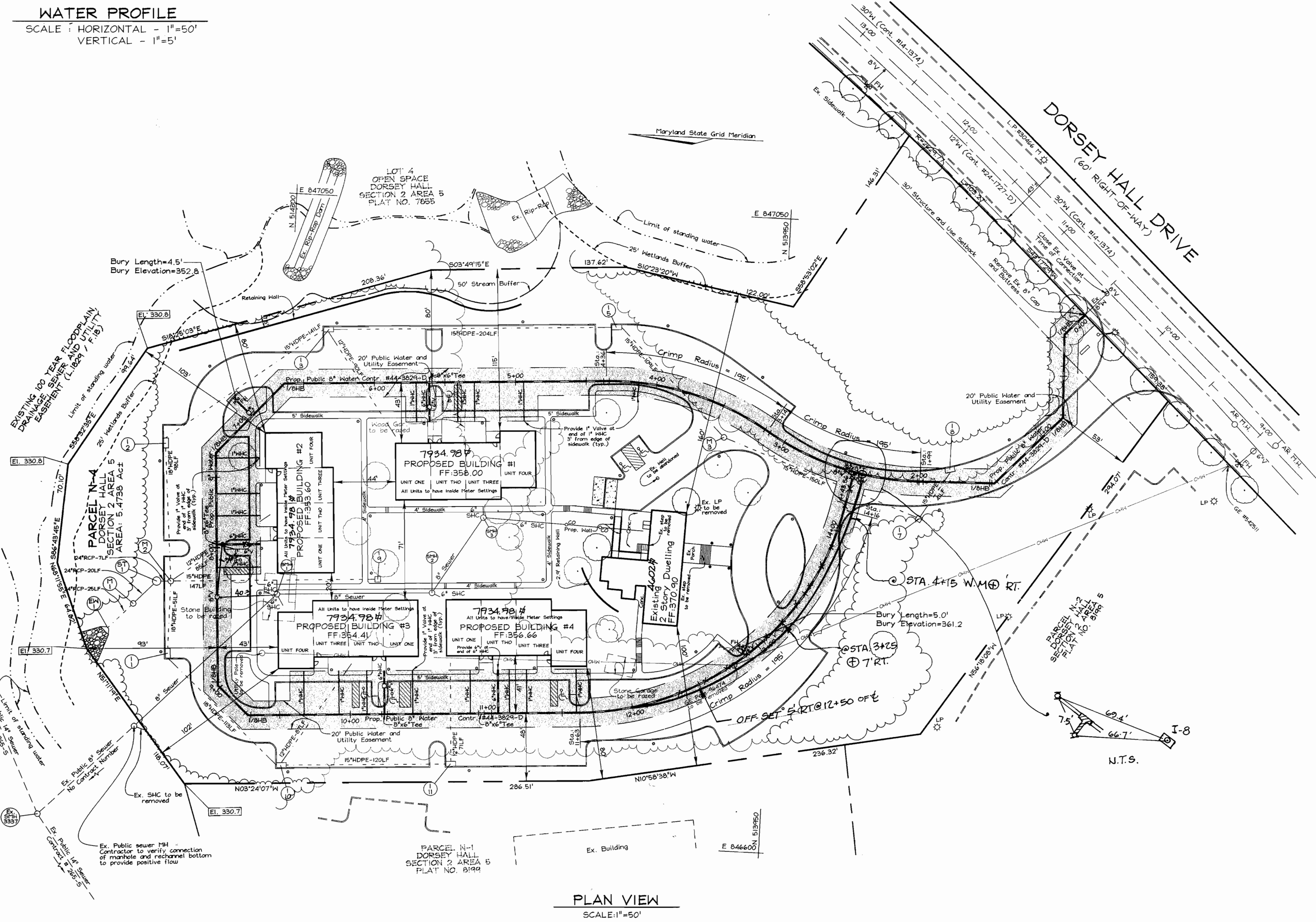
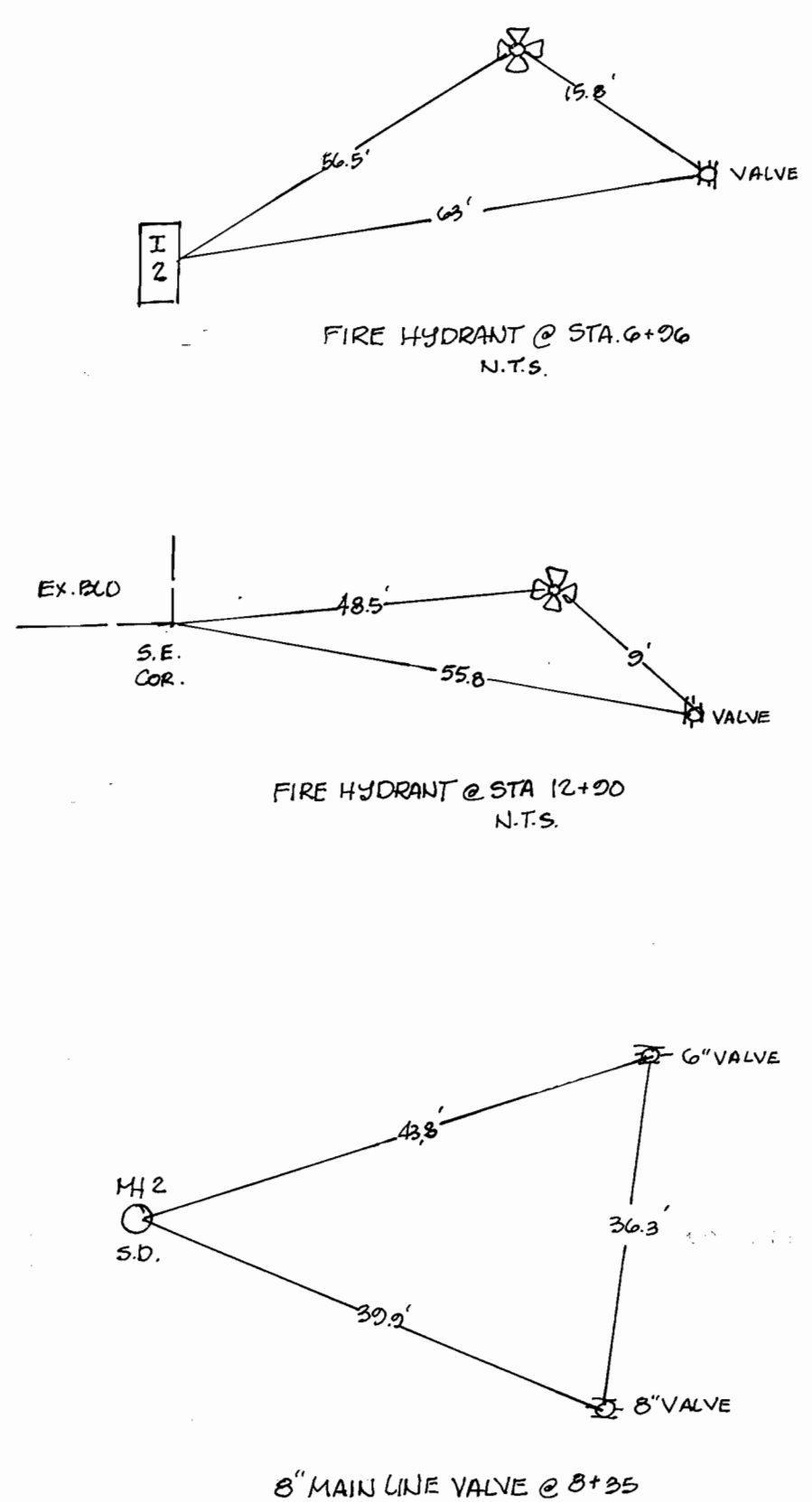
SCALE AS SHOWN
SHEET 1 OF 2



WATER PROFILE
 SCALE: HORIZONTAL - 1"=50'
 VERTICAL - 1"=5'

"WHC AS-BUILT"

FROM	TO	DIST (FT)
EX. BUILDING	UNIT 1-WHC	50.2'
BUILD #1	UNIT 4-WHC	82.4'
UNIT 4	UNIT 3	22.5'
UNIT 3	UNIT 2	12.1'
UNIT 2	UNIT 1	41.5'
UNIT 1	UNIT 1	34.0'
UNIT 1	UNIT 2	11.4'
UNIT 1	UNIT 3	22.7'
UNIT 1	UNIT 4	20.4'
BUILD #2	TOP FH VALVE	31.0'
UNIT 4	UNIT 2	69.2'
UNIT 3	TOP FH VALVE	55.7'
UNIT 3	UNIT 2	73.2'
UNIT 2	UNIT 1	82.5'
UNIT 2	UNIT 1	30.2'
UNIT 1	UNIT 1	31.8'
UNIT 1	UNIT 1	10.5'
BUILD #3	UNIT 1-10	60.8'
UNIT 4	UNIT 1	64.1'
UNIT 3	UNIT 1	76.7'
UNIT 3	UNIT 1	42.4'
UNIT 2	UNIT 1	80.9'
UNIT 2	UNIT 1	28.2'
UNIT 1	UNIT 1	30.1'
UNIT 1	UNIT 1	60.5'
BUILD #4	UNIT 1-11	60.1'
UNIT 1	UNIT 1	35.1'
UNIT 2	UNIT 1	77.1'
UNIT 2	UNIT 1	30.8'
UNIT 3	UNIT 1	84.8'
UNIT 3	UNIT 1	26.5'
UNIT 4	UNIT 1	111.8'
UNIT 4	UNIT 1	63.3'



PLAN VIEW
 SCALE: 1"=50'

DEPARTMENT OF PUBLIC WORKS
 HOWARD COUNTY, MARYLAND
 Chief, Bureau of Utilities

DEPARTMENT OF PLANNING & ZONING
 HOWARD COUNTY, MARYLAND
 Chief, Development Engineering Division

VOGEL & ASSOCIATES
 ENGINEERS-SURVEYORS-PLANNERS
 3691 Park Avenue, Suite 101 • Ellicott City, Maryland 21043
 Tel 410.461.5828 Fax 410.465.3966

Professional Engineer Seal for Robert H. Vogel, P.E. No. 16193

DES:	PS
DRN:	TR
CHK:	JCO
DATE:	March 2000
BY:	KCI 1
NO.:	AS-BUILT CONDITIONS ADDED TO PLAN
REVISION:	
DATE:	02/01/01

WATER PLAN AND PROFILES
 600' SCALE MAP NO. 30 BLOCK NO. 4

DORSEY MANOR
 DORSEY HALL, SECTION 2, AREA 5, PARCEL N-3
 DORSEY MANOR EXECUTIVE OFFICES
 CONTRACT #44-3829-D
 TAX MAP #30 GRID #4 PARCEL N-3
 2ND ELECTION DISTRICT HOWARD COUNTY, MARYLAND

SCALE AS SHOWN
 SHEET 2 OF 2