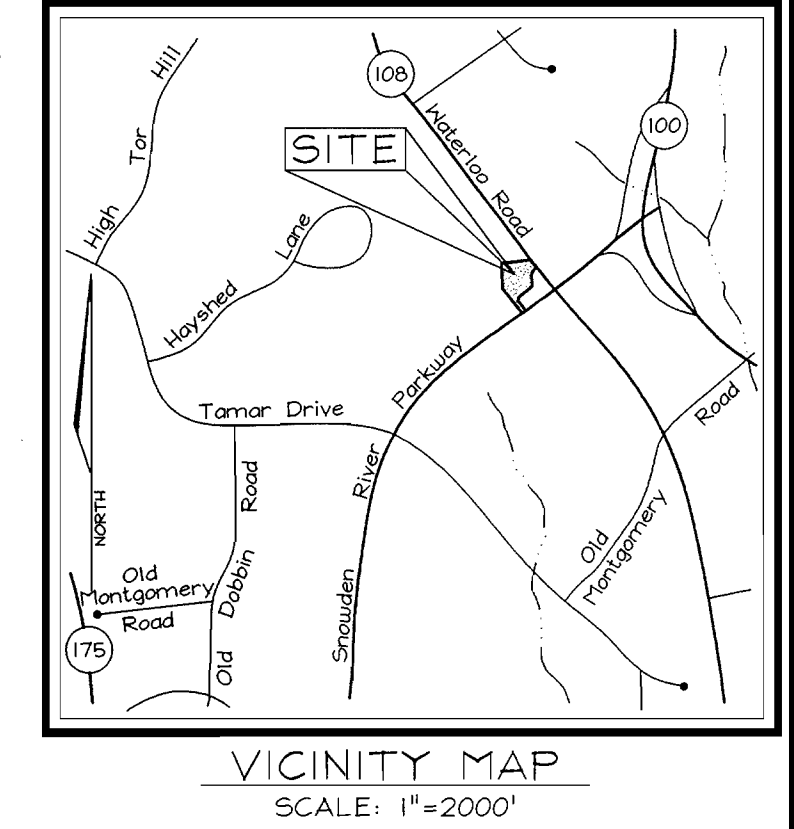
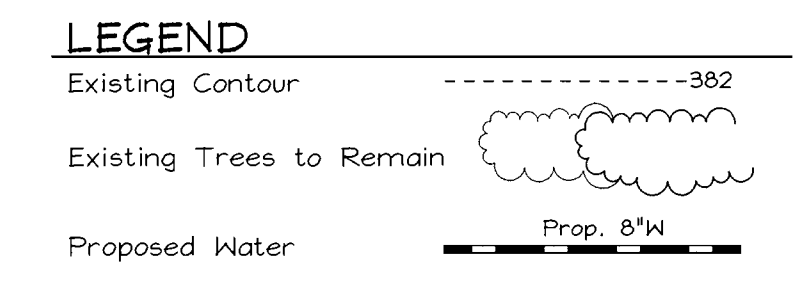


QUANTITIES				
NAME OF UTILITY CONTRACTOR :				
SURVEY AND DRAFTING DIVISION AS-BUILT DATE :				
ITEMS	QUANTITIES ESTIMATED	AS-BUILT		
		QUANTITIES	TYPE	MANUFACTURER/SUPPLIER
6" Valve	2			
8" Valve	2			
6" Water	35LF			
8" Water	295LF			
Fire Hydrant	2			
8" 1/8 HB	2			
8" Cap & Buttress	2			
8"X8" Tee	1			
8"X6" Tee	2			

PUBLIC WATER PLAN COLUMBIA ROUTE 108 COMMERCIAL HOWARD COUNTY, MARYLAND CONTRACT NO. 44-3828-D



BENCHMARKS

Howard County Station 37A2
N 562,120.83 E 1,369,300.26 Elev.: 403.71
40'± northeast of MD Route 108, 1100'± northwest of Old Montgomery Road

Howard County Station 37A3
N 561,131.07 E 1,369,913.29 Elev.: 385.66
southwest of the intersection of MD Route 108 and Old Montgomery Road

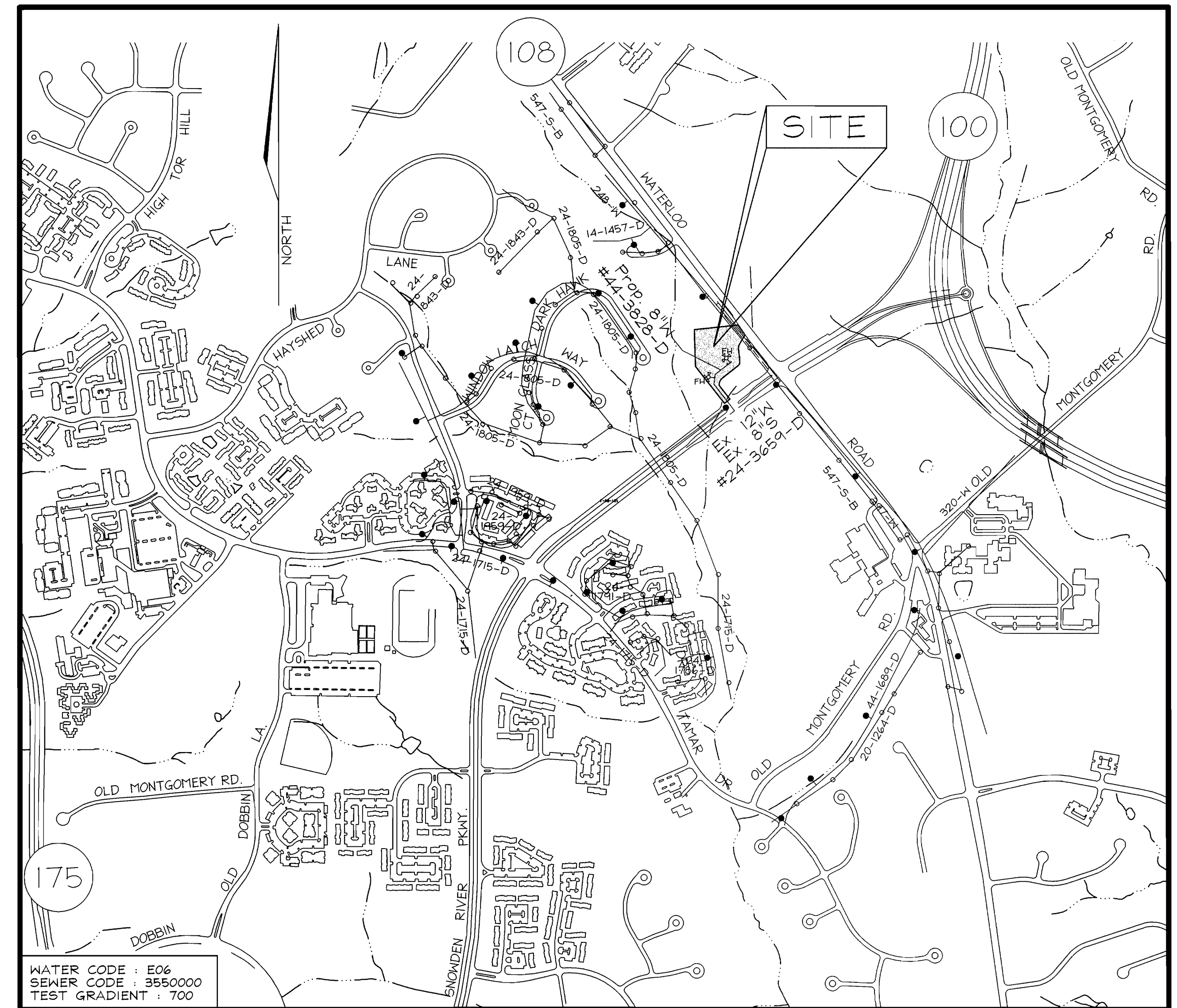
GENERAL NOTES

- PART I**
- APPROXIMATE LOCATION OF EXISTING MAINS ARE SHOWN. THE CONTRACTOR SHALL TAKE ALL NECESSARY PRECAUTIONS TO PROTECT EXISTING MAINS AND SERVICES AND MAINTAIN UNINTERRUPTED SUPPLY. ANY DAMAGE INCURRED SHALL BE REPAIRED IMMEDIATELY TO THE SATISFACTION OF THE ENGINEER AT THE CONTRACTOR'S EXPENSE.
 - ALL HORIZONTAL CONTROLS ARE BASED ON MARYLAND STATE COORDINATES.
 - ALL VERTICAL CONTROLS ARE BASED ON MARYLAND STATE COORDINATES.
 - ALL PIPE ELEVATIONS SHOWN ARE INVERT ELEVATIONS.
 - CLEAR ALL UTILITIES BY A MINIMUM OF 6". CLEAR ALL POLES BY 2'-0" MINIMUM OR TUNNEL AS REQUIRED. THE OWNER HAS CONTACTED THE UTILITY COMPANIES AND HAS MADE ARRANGEMENTS FOR BRACING OF POLES AS SHOWN ON DRAWINGS. IN THE EVENT THE CONTRACTOR'S WORK REQUIRES THE BRACING OF ADDITIONAL POLES, ANY COST INCURRED BY THE OWNER FOR BRACING OF ADDITIONAL POLES OR DAMAGES SHALL BE DEDUCTED FROM MONEY OWED THE CONTRACTOR. THE CONTRACTOR SHALL COORDINATE WITH THE UTILITY COMPANIES TO SCHEDULE THE BRACING OF THE POLES.
 - FOR DETAILS NOT SHOWN ON THE DRAWINGS, AND FOR MATERIALS AND CONSTRUCTION METHODS USE HOWARD COUNTY DESIGN MANUAL, VOLUME IV, STANDARD SPECIFICATIONS AND DETAILS FOR CONSTRUCTION (LATEST EDITION). THE CONTRACTOR SHALL HAVE A COPY OF VOLUME IV ON THE JOB.
 - WHERE TEST PITS HAVE BEEN MADE ON EXISTING UTILITIES, THEY ARE NOTED BY THE SYMBOL AT THE LOCATION OF THE TEST PIT. A NOTE OR NOTES CONTAINING THE RESULTS OF THE TEST PIT OR PITS IS INCLUDED ON THE DRAWINGS. EXISTING UTILITIES IN THE VICINITY OF THE PROPOSED WORK FOR WHICH TEST PITS HAVE NOT BEEN DUG SHALL BE LOCATED BY THE CONTRACTOR TWO WEEKS IN ADVANCE OF CONSTRUCTION.
 - THE CONTRACTOR SHALL NOTIFY THE FOLLOWING UTILITY COMPANIES OR AGENCIES AT LEAST FIVE WORKING DAYS BEFORE STARTING WORK SHOWN THESE PLANS:

C. & P. TELEPHONE	597-8585
A.T. & T.	865-3803
STATE HIGHWAY ADMINISTRATION	531-5533
B.G.E. CO. CONTRACTOR SERVICES	950-4620
B.G.E. CO. UNDER GROUND DAMAGE CONTROL	787-9068
MISS UTILITY	1-800-257-7777
COLONIAL PIPELINE CO.	785-1390
HOWARD COUNTY DEPARTMENT OF PUBLIC WORKS	313-4900
BUREAU OF UTILITIES	
 - TREES AND SHRUBS ARE TO BE PROTECTED FROM DAMAGE TO THE MAXIMUM EXTENT. TREES AND SHRUBS LOCATED WITHIN THE CONSTRUCTION STRIP ARE NOT TO BE REMOVED OR DAMAGED BY THE CONTRACTOR.
 - THE CONTRACTOR SHALL REMOVE TREES, STUMPS AND ROOTS ALONG LINE OF EXCAVATION. PAYMENT FOR SUCH REMOVAL SHALL BE INCLUDED IN THE UNIT PRICE BID FOR THE CONSTRUCTION OF THE MAIN.
 - THE CONTRACTOR SHALL NOTIFY THE BUREAU OF HIGHWAYS, HOWARD COUNTY, AT (410) 313-2450 AT LEAST FIVE WORKING DAYS BEFORE ANY OPEN CUT OF ANY COUNTY ROAD OR BORING/JACKING OPERATION IN COUNTY ROADS FOR LAYING WATER/SEWER MAIN OR HOUSE CONNECTIONS. THE APPROVAL OF THESE DRAWINGS WILL CONSTITUTE COMPLIANCE WITH DPW REQUIREMENTS PER SECTION 18.114(a) OF THE HOWARD COUNTY CODE.

PART II - WATER

- ALL WATER MAINS TO BE D.I.P. CLASS 52 UNLESS OTHERWISE NOTED.
- TOPS OF ALL WATER MAINS TO HAVE A MINIMUM OF 3'-1/2' COVER UNLESS OTHERWISE NOTED.
- VALVES ADJACENT TO TEES SHALL BE STRAPPED TO TEES.
- ALL FITTINGS SHALL BE BUTTRESSED OR ANCHORED WITH CONCRETE IN ACCORDANCE WITH THE STANDARD DETAILS UNLESS OTHERWISE PROVIDED FOR ON THE DRAWINGS.
- FIRE HYDRANTS SHALL BE SET TO THE BURY LINE ELEVATIONS SHOWN ON THE DRAWINGS. ALL FIRE HYDRANTS SHALL BE RESTRAINED AND BUTTRESSED WITH CONCRETE IN ACCORDANCE WITH STANDARD DETAILS. SOIL AROUND FIRE HYDRANT SHALL BE COMPACTED IN ACCORDANCE WITH SECTION 1000 AND 1005 OF THE STANDARD SPECIFICATIONS.
- THE CONTRACTOR SHALL NOT OPERATE ANY WATER MAIN VALVES ON THE EXISTING WATER SYSTEM.
- ALL WATER HOUSE CONNECTIONS SHALL BE FOR INSIDE METER SETTING UNLESS OTHERWISE NOTED ON PLANS OR IN SPECIFICATIONS.
- WATER CONNECTION WITHIN OLD MONTGOMERY ROAD TO BE OPEN CUT. CONTRACTOR SHALL MAINTAIN TRAFFIC FLOW AT ALL TIMES.



WATER CODE : E06
SEWER CODE : 3550000
TEST GRADIENT : 700

Type of Building :	Assisted Living
No. of Lots/Parcels :	1
No. of single Water House Connections :	1
No. of twin Water House Connections :	0
No. of Sewer House Connections :	1
Drainage Area :	Dorsey Run
Treatment Plant :	LFWQM Center Savage

LOCATION PLAN
SCALE : 1"=600'

SEDIMENT CONTROL MEASURES WILL BE IMPLEMENTED IN ACCORDANCE WITH SECTION 219 OF THE SPECIFICATIONS AND WITH SITE DEVELOPMENT PLAN SDP-00-078

THIS DEVELOPMENT IS APPROVED FOR SOIL EROSION AND SEDIMENT CONTROL BY THE HOWARD COUNTY SOIL CONSERVATION DISTRICT.

REVIEWED FOR HOWARD COUNTY SOIL CONSERVATION DISTRICT AND MEETS TECHNICAL REQUIREMENTS.

John Rolator 4-14-00 U.S. SOIL CONSERVATION DISTRICT DATE

Robert H. Vogels 4-14-00 U.S. SOIL CONSERVATION DISTRICT DATE

DEPARTMENT OF PUBLIC WORKS
HOWARD COUNTY, MARYLAND

Robert H. Vogels 4-7-00
CHIEF, BUREAU OF UTILITIES DATE

DEPARTMENT OF PLANNING & ZONING
HOWARD COUNTY, MARYLAND

Robert H. Vogels 4/10/00
CHIEF, DEVELOPMENT ENGINEERING DIVISION DATE

VOGEL & ASSOCIATES
ENGINEERS-SURVEYORS-PLANNERS

3691 Park Avenue, Suite 101 • Ellicott City, Maryland 21043
Tel 410.461.5828 Fax 410.465.3966

ROBERT H. VOGEL, P.E. NO. 12198



DES: PS					
DRN: TR					
CHK: JCO					
DATE: March 2000	BY: NO.	REVISION	DATE	600' SCALE MAP NO. 37	BLOCK NO. 1

TITLE SHEET

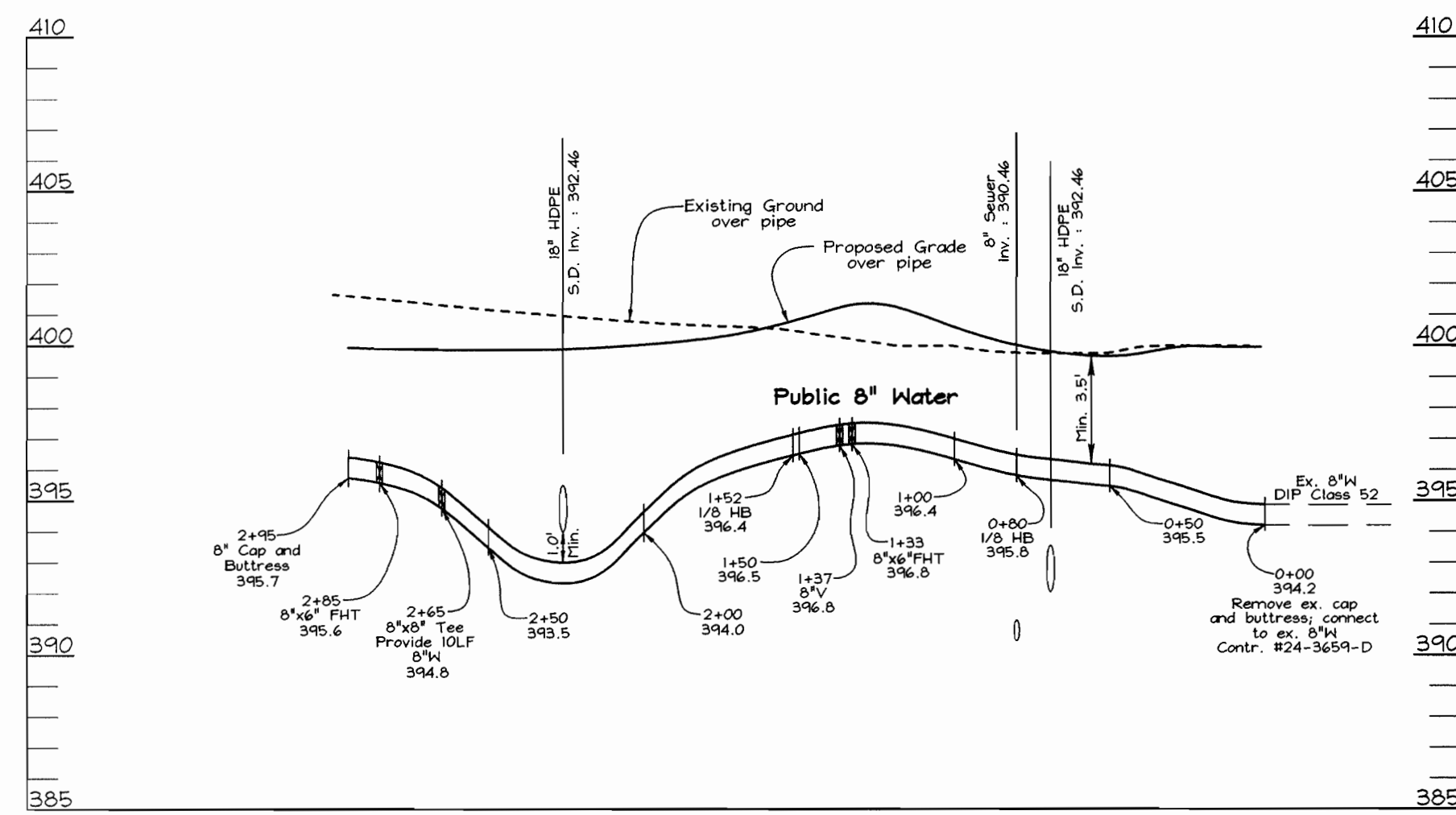
COLUMBIA ROUTE 108 COMMERCIAL
SECTION ONE AREA ONE
CONTRACT NO. 44-3828-D

TAX MAP #37 GRID #1
6TH ELECTION DISTRICT

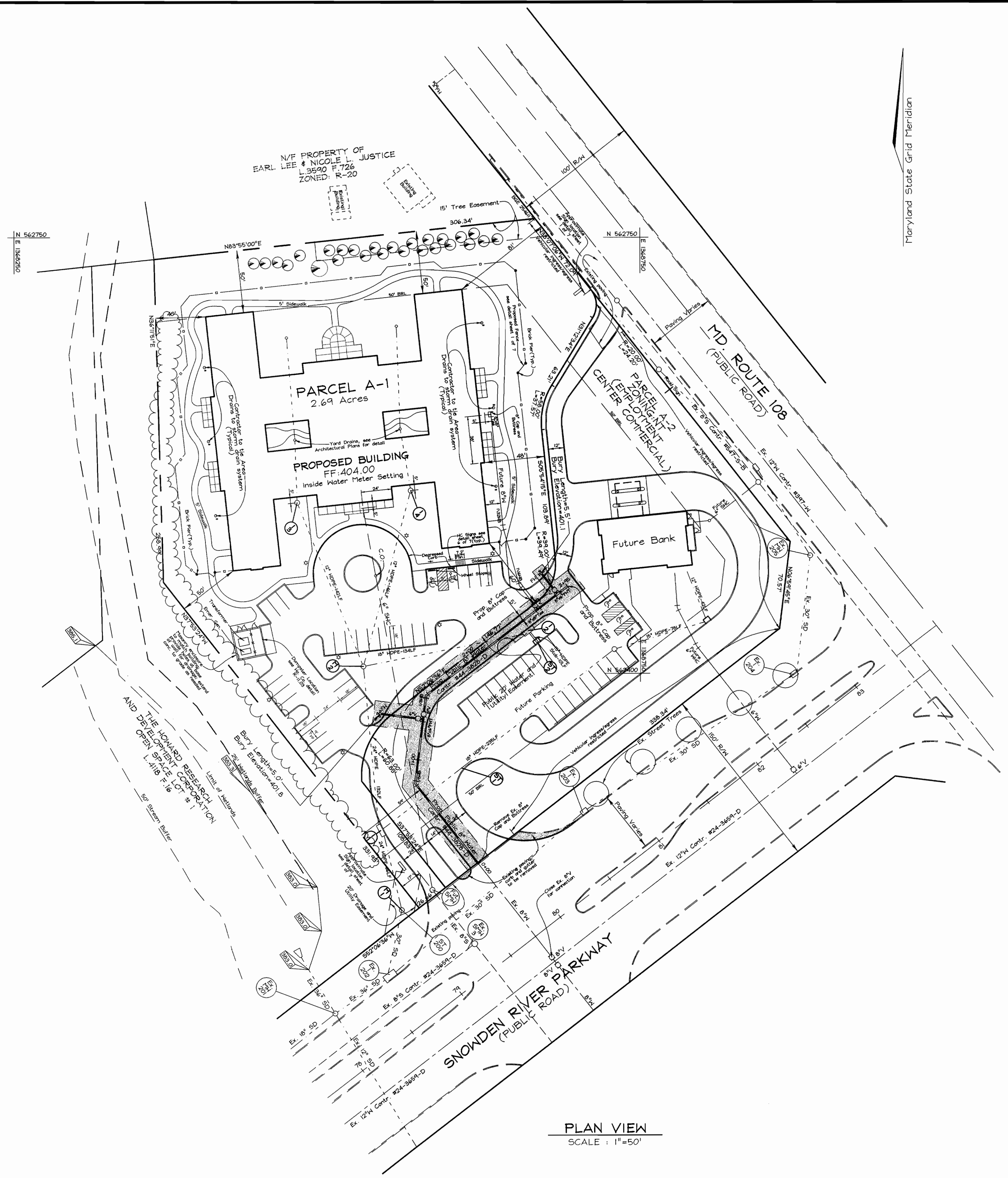
PARCELS A-1
HOWARD COUNTY, MARYLAND

SCALE AS SHOWN

SHEET 1 OF 2



WATER PROFILE
 SCALE: HORIZONTAL - 1"=50'
 VERTICAL - 1"=5'



PLAN VIEW
 SCALE: 1"=50'

DEPARTMENT OF PUBLIC WORKS
 HOWARD COUNTY, MARYLAND

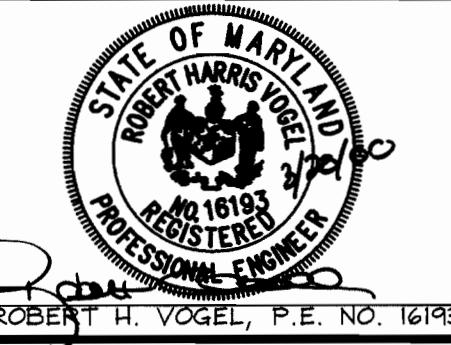
Robert H. Vogel
 CHIEF, BUREAU OF UTILITIES

DEPARTMENT OF PLANNING & ZONING
 HOWARD COUNTY, MARYLAND

Robert H. Vogel
 CHIEF, DEVELOPMENT ENGINEERING DIVISION

VOGEL & ASSOCIATES
 ENGINEERS-SURVEYORS-PLANNERS

3691 Park Avenue, Suite 101 • Ellicott City, Maryland 21043
 Tel 410.461.5628 Fax 410.465.3966



DES: PS					
DRN: TR					
CHK: JCO					
DATE: March 2000					
BY NO.		REVISION		DATE	

PUBLIC WATER PLAN AND PROFILE

600' SCALE MAP NO. 37 BLOCK NO. 1

COLUMBIA ROUTE 108 COMMERCIAL
 SECTION ONE AREA ONE
 CONTRACT NO. 44-3828-D

TAX MAP #37 GRID #1
 6TH ELECTION DISTRICT

PARCELS A-1
 HOWARD COUNTY, MARYLAND

SCALE AS SHOWN

SHEET 2 OF 2