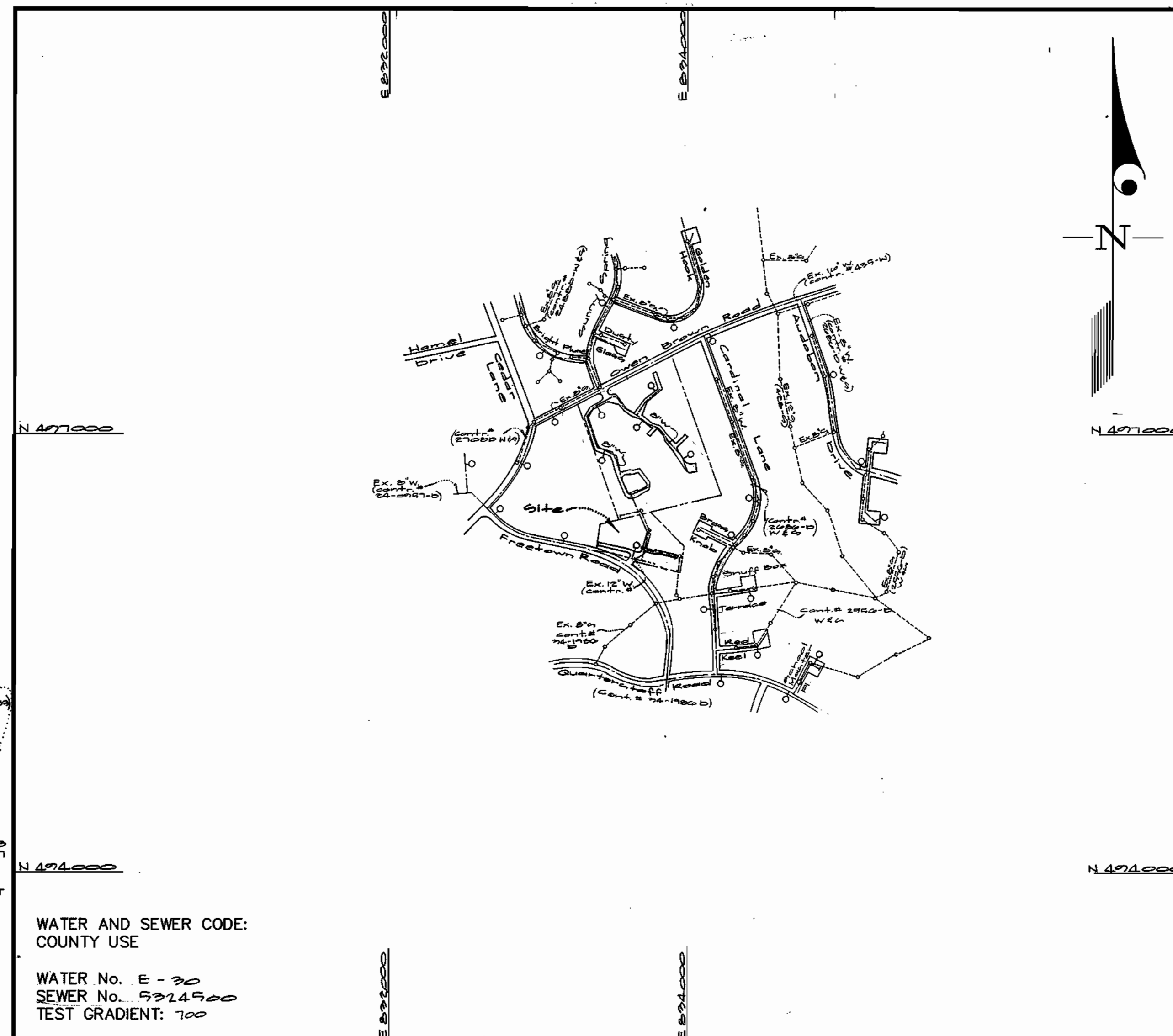


QUANTITIES				
ITEMS	QUANTITIES ESTIMATED	AS-BUILT		
		QUANTITIES	TYPE	MANUFACTURER/SUPPLIER
8" W	2547 LF			
6" W	108 LF			
4" W	252 LF			
12" x 6" Tee	2 each			
8" x 4" Tee	2 each			
6" x 4" Tee	2 each			
2" MV	2 each			
8" Valves	2 each			
1" WSG	177 LF			
PH	7 each			
8" Sewer	1147 LF			
4" Sewer Manholes	6 each			
NAME OF UTILITY CONTRACTOR:				
SURVEY AND DRAFTING DIV.		CHECKBOX: AS-BUILT DATE:		

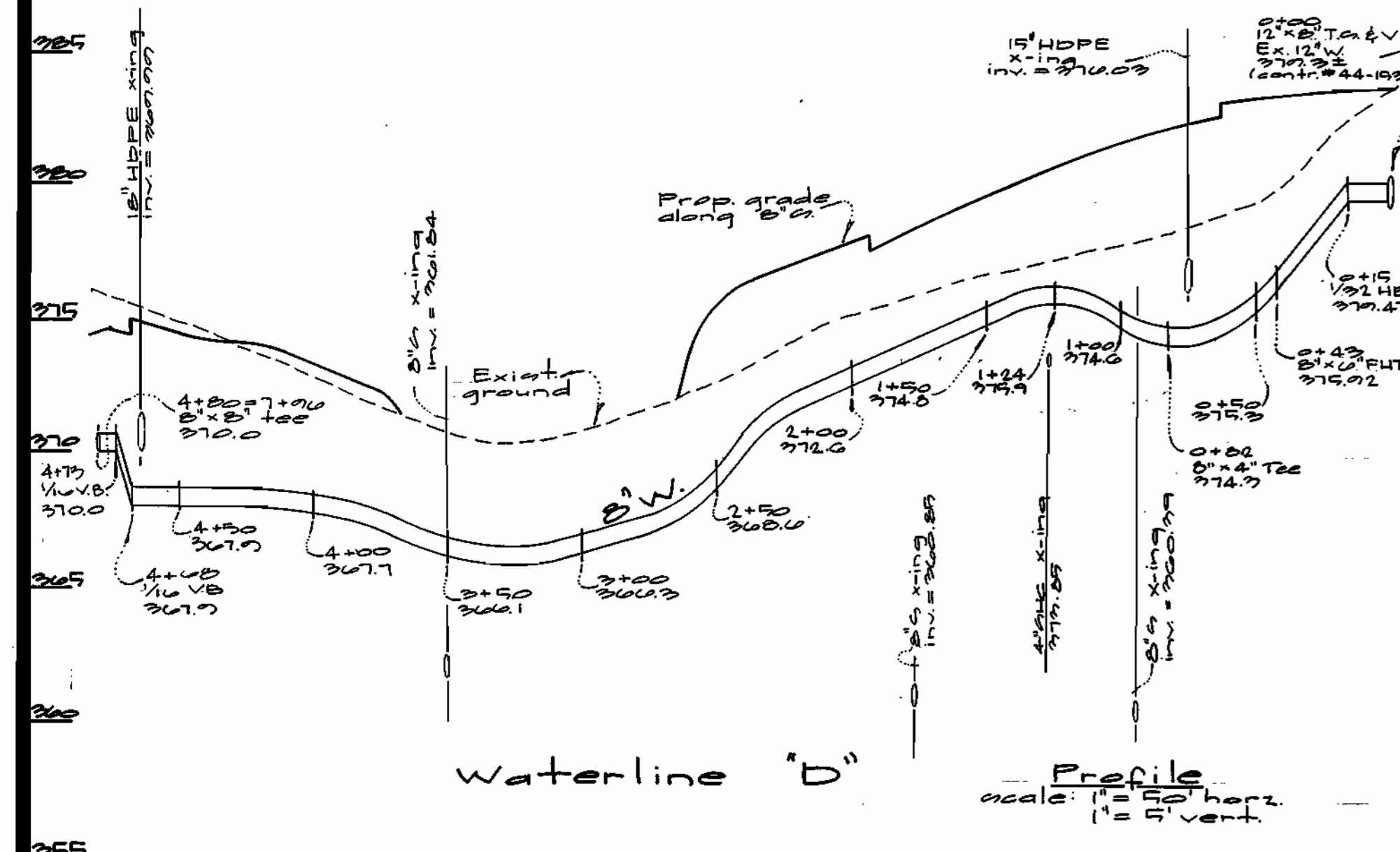
TYPE OF BUILDING	Single Family Attached
NUMBER OF UNITS	00
NUMBER OF S.H.C.'s	0
NUMBER OF W.H.C.'s	01, 0-2 M.V.s
DRAINAGE AREA	Little Retent
TREATMENT PLANT	Little Retent



WATER AND SEWER CODE:
COUNTY USE

WATER No. E-30
SEWER No. 5224900
TEST GRADIENT: 700

VICINITY MAP
SCALE: 1"=600'



- GENERAL NOTES**
- PART I**
- Approximate location of existing mains are shown. The contractor shall take all necessary precautions to protect existing mains and services and maintain uninterrupted supply. Any damage incurred shall be repaired immediately to the satisfaction of the Engineer at the Contractor's expense.
 - All horizontal controls are based on Maryland State Coordinates [North American Datum 1983 (NAD 83)].
 - All vertical controls are based on U.S.G.S. data.
 - All pipe elevations shown are invert elevations.
 - Clear all utilities by a minimum of 6". Clear all poles by 2'-0" minimum or tunnel as required. The owner has contacted the utility companies and has made arrangements for bracing of poles as shown on the drawings. In the event the contractor's work requires the bracing of additional poles, any cost incurred by the owner for bracing of additional poles or damages shall be deducted from money owed the contractor. The contractor shall coordinate with the utility companies to schedule the bracing of the poles.
 - For details not shown on the drawings, and for materials and construction methods use Howard County Design Manual, Volume IV, Standard Specifications and Detail for Construction (Latest Edition). The contractor shall have a copy of Volume IV on the job.
 - Where test pits have been made on existing utilities, they are noted by the symbol [] at the location of the test pit. A note or notes containing the results of the test pit or pits is included on the drawings. Existing utilities in the vicinity of the proposed work for which test pits have not been dug shall be located by the contractor two weeks in advance of construction operations at his own expense.
 - Contractor shall notify the following utility companies or agencies at least (5) working days before starting work shown on these plans:

State Highway Administration	531-5533
BGE Contractor Services	850-4620
BGE Under Ground Damage Control	787-9068
Miss Utility	1-800-257-7777
Colonial Pipeline Co.	795-1390
Howard County Department of Public Works Bureau of Utilities	313-4900
 - Trees and shrubs are to be protected from damage to maximum extent. Trees and shrubs located within the construction strip are not to be removed or damaged by the contractor.
 - Contractor shall remove trees, stumps and roots along line of excavation. Payment for such removal shall be included in the unit price bid for construction of the main.
 - The contractor shall notify the Bureau of Highways, Howard County, at (410) 313-2450 at least five (5) working days before any open cut of any County road or boring/jacking operation on County roads for laying water/sewer mains or house connections. The approval of these drawings will constitute compliance with DPW requirement per Section 18.114(a) of the Howard County Code.
- PART II - WATER**
- All water mains to be D.I.P. Class 52 unless otherwise noted.
 - Tops of all water mains to have a minimum of 3-1/2' cover unless otherwise noted.
 - Valves adjacent to tees shall be strapped to tees.
 - All fittings shall be buttressed or anchored with concrete in accordance with the Standard Details unless otherwise provided for on the drawings.
 - Fire hydrants shall be set to the bury line elevations shown on the drawings. All fire hydrants shall be restrained and buttressed with concrete in accordance with the Standard Details. Soil around the fire hydrant shall be compacted in accordance with Section 1000 and 1005 of the Standard Specifications.
 - The contractor shall not operate any water main valves on the existing water system.
 - All water house connections shall be for inside meter setting unless otherwise noted on plans or in specifications.
 - For sprinkler system for all townhomes or multi-family dwelling units should have a minimum of 1' connection with a 3/4" meter.
- PART III - SEWER**
- All sewer mains shall be DIP and P.V.C. unless otherwise noted.
 - All manholes shall be 4' - 0" inside diameter unless otherwise noted.
 - Force mains shall be D.I.P. only.
 - Manholes shown with 12" and 16" walls are for brick manholes only.
 - Manholes designated W.T. in plan and profile shall have watertight frame and covers, Standard Detail G5.52. Where watertight frame and cover is used, set top of frame 1'-6" above finished grade unless otherwise noted on drawings.
 - House(s) with the symbol "C.N.S." indicates that cellar cannot be served.

CONTRACT No. 24-3781-D

Hickory Ridge Elderly Center
HOWARD COUNTY, MARYLAND
DEPARTMENT OF PUBLIC WORKS

Sediment Control Measures will be implemented in accordance with Section 219 of the Specifications & with Road Drawings Plan 24-3781-D; Drawings sheets 7 & 8 for Sediment & Erosion Control.

REVIEWED FOR HOWARD SOIL CONSERVATION DISTRICT AND MEETS TECHNICAL REQUIREMENT.

Cheryl Spring/16 8/30/16
SIGNATURE DATE
U.S.D.A. NATURAL RESOURCES CONSERVATION SERVICE

THIS DEVELOPMENT PLAN IS APPROVED FOR SOIL EROSION AND SEDIMENT CONTROL BY THE HOWARD SOIL CONSERVATION DISTRICT.

APPROVED:
Matt L. Kelly 8/30/16
HOWARD C.O.D. DATE

DEPARTMENT OF PUBLIC WORKS
HOWARD COUNTY, MARYLAND

Ruth Berman 8-25-99
CHIEF, BUREAU OF UTILITIES DATE

DEPARTMENT OF PLANNING AND ZONING
HOWARD COUNTY, MARYLAND

John Dammann 9/1/16
CHIEF, DEVELOPMENT ENGINEERING DIVISION DATE

GLW GUTSCHICK LITTLE & WEBER, P.A.
CIVIL ENGINEERS, SURVEYORS, PLANNERS, LANDSCAPE ARCHITECTS
3909 NATIONAL DRIVE - SUITE 250 - BURTONSVILLE OFFICE PARK - BURTONSVILLE, MARYLAND 20866
TEL: (410) 880-1820 ~ FAX: (301) 421-4186



DES: DEV				
DRN: KLP				
CHK: DEV				
DATE: 8/30/16	BY	NO	REVISION	DATE

Cover Sheet

600' SCALE MAP NO. 25 BLOCK NO. 10

Hickory Ridge Elderly Center
Lots 1 & 2
Contract # 24-3781-D
5th Election District
Howard County, Maryland

GLW FILE No.
95053

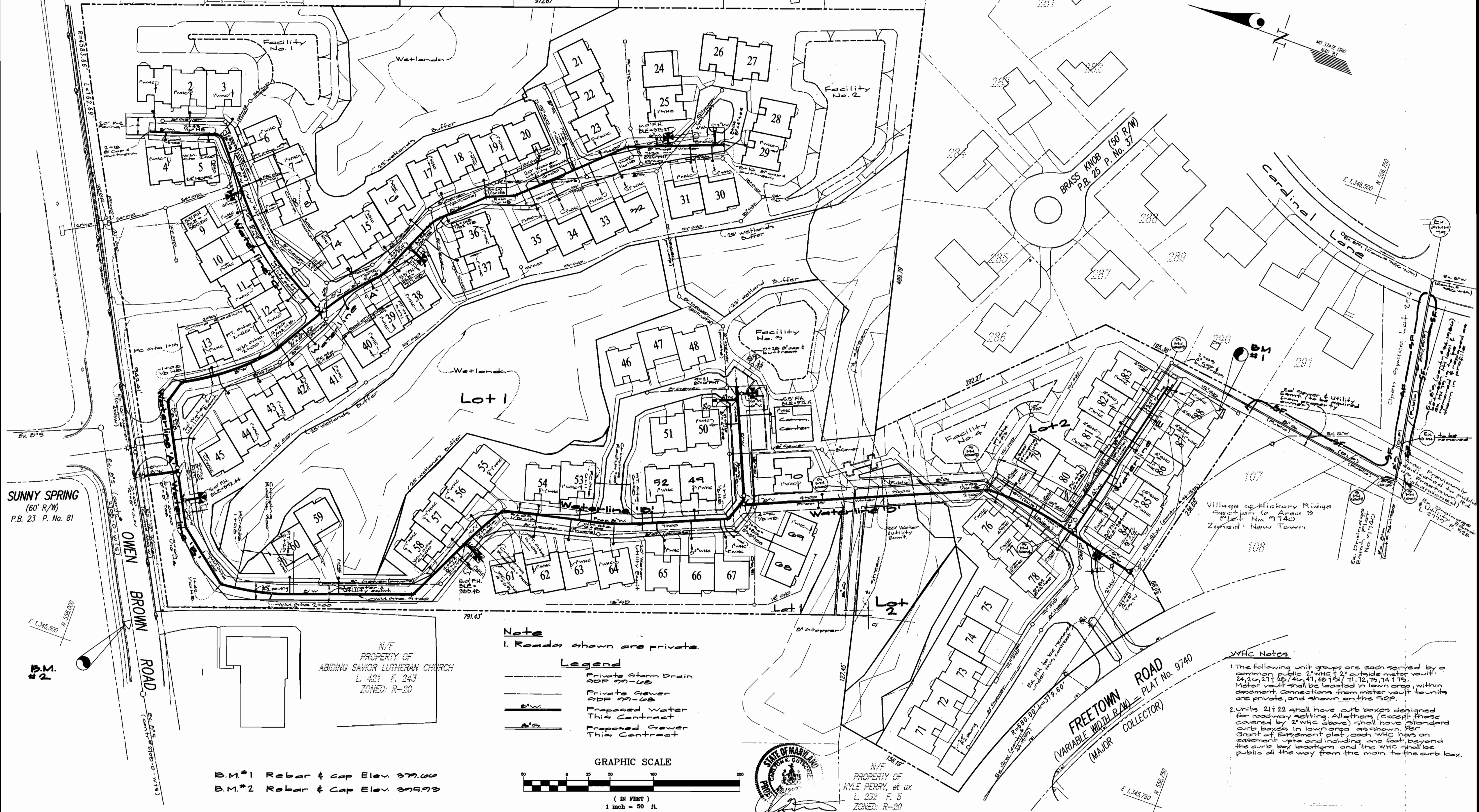
SCALE AS SHOWN

SHEET 1 OF 2

SPRING LAKE GARDENS
 PLAT No. 4637
 ZONED: R-20

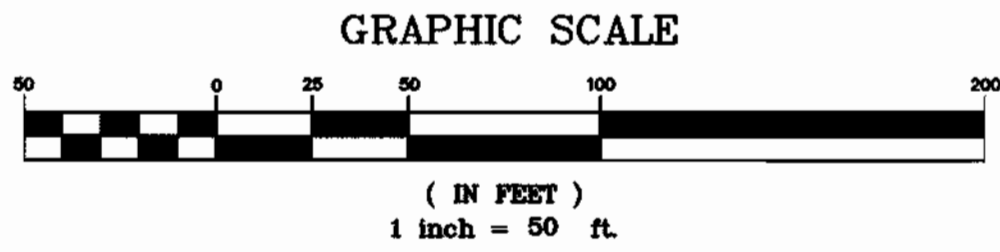
SPRING LAKE GARDENS
 PLAT No. 3969
 ZONED: R-20

VILLAGE OF HICKORY RIDGE
 SECTION 1 AREA 2
 P.B. 25 P. No. 37
 ZONED: NEW TOWN



Note
 1. Roads shown are private.

Legend	
	Private Storm Drain SDP 99-08
	Private Sewer SPS 99-08
	Proposed Water This Contract
	Proposed Sewer This Contract



N/E
 PROPERTY OF
 KYLE PERRY, et ux
 L. 232 F. 5
 ZONED: R-20

WVC Notes
 1. The following unit groups are each served by a common public 24" WVC in outside meter vault:
 24, 26, 27, 28, 29, 30, 31, 32, 33, 34, 35, 36, 37, 38, 39, 40, 41, 42, 43, 44, 45, 46, 47, 48, 49, 50, 51, 52, 53, 54, 55, 56, 57, 58, 59, 60, 61, 62, 63, 64, 65, 66, 67, 68, 69, 70, 71, 72, 73, 74, 75, 76, 77, 78, 79, 80.
 Meter vault shall be located in lawn area, within easement. Connections from meter vault to units are private, and shown on the SDP.
 2. Units 21 & 22 shall have curb boxes designed for roadway setting. All others (except those covered by 2" WVC above) shall have standard curb boxes in lawn area, as shown. Per Grant of Easement plat, each WVC has an easement up to and including one foot beyond the curb box location and the WVC shall be public all the way from the main to the curb box.

SUNNY SPRING
 (60' R/W)
 P.B. 23 P. No. 81

B.M.#1 Rebar & Cap Elev. 379.06
 B.M.#2 Rebar & Cap Elev. 375.93

N/E
 PROPERTY OF
 ABIDING SAVIOR LUTHERAN CHURCH
 L. 421 F. 243
 ZONED: R-20

FREE TOWN ROAD
 (VARIABLE WIDTH R/W) - PLAT No. 9740
 (MAJOR COLLECTOR)

DEPARTMENT OF PUBLIC WORKS
 HOWARD COUNTY, MARYLAND
 Chief, Bureau of Utilities

DEPARTMENT OF PLANNING AND ZONING
 HOWARD COUNTY, MARYLAND
 Chief, Development Engineering Division

GLW GUTSCHICK LITTLE & WEBER, P.A.
 CIVIL ENGINEERS, LAND SURVEYORS, LAND PLANNERS, LANDSCAPE ARCHITECTS
 3909 NATIONAL DRIVE - SUITE 250 - BURTONTOWNE OFFICE PARK
 BURTONTOWNE, MARYLAND 20886
 TEL: 301-421-4024 BALT: 410-580-1820 DC/VA: 301-980-2524 FAX: 301-421-4186

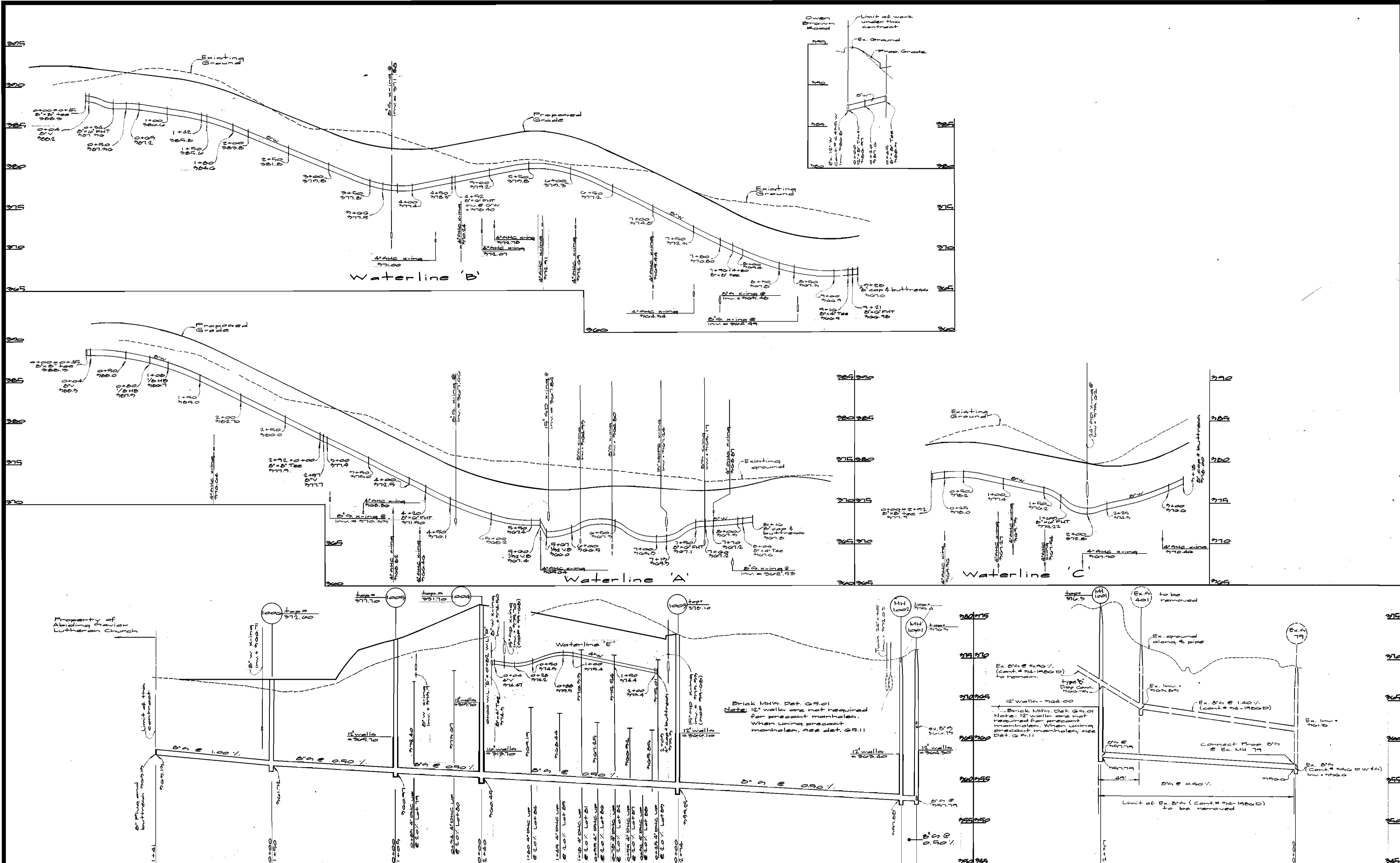
Prepared For:
 Orchard Development
 c/o Old Columbia Pike
 Ellicott City, Maryland
 21044
 (410) 790-1800

DES: dev	DRN: fmm	CHK: dev	DATE: Aug 1999
BY	NO	REVISION	DATE

WATER & SEWER PLAN
 600' SCALE MAP NO. 35 BLOCK NO. 18

HICKORY RIDGE ELDERLY CENTER
 LOTS 1 AND 2
 Contract # 24-3701-0
 CLARKSVILLE ELECTION DISTRICT No. 5
 HOWARD COUNTY, MARYLAND

SCALE AS SHOWN
 SHEET 2 OF 3



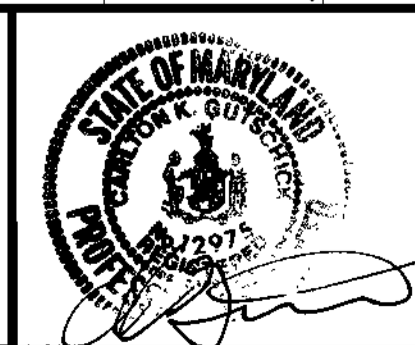
DEPARTMENT OF PUBLIC WORKS
HOWARD COUNTY, MARYLAND

Robert Berman 8-25-99
CHIEF, BUREAU OF UTILITIES DATE

DEPARTMENT OF PLANNING AND ZONING
HOWARD COUNTY, MARYLAND

Mr. Damman 9/1/99
CHIEF, DEVELOPMENT ENGINEERING DIVISION DATE

GLW GUTSCHICK LITTLE & WEBER, P.A.
CIVIL ENGINEERS, LAND SURVEYORS, LAND PLANNERS, LANDSCAPE ARCHITECTS
3909 NATIONAL DRIVE - SUITE 250 - BURTOWNSVILLE OFFICE PARK
BURTOWNSVILLE, MARYLAND 20866
TEL: 301-421-4024 BALT: 410-880-1820 DC/VA: 301-989-2524 FAX: 301-421-4186



DES: DEV			
DRN: KLP			
CHK: DEV			
DATE: Aug 1999	BY: NO	REVISION	DATE

Water & Sewer Profiles
600' SCALE MAP NO. 75 BLOCK NO. 10

Hickory Ridge Elderly Center
Lots 1 & 2
Contract # 24-3781-0
Election District No. 5
Howard County, Maryland


SCALE AS SHOWN
SHEET 2 OF 3

ITEMS	QUANTITIES ESTIMATED	AS-BUILT		MANUFACTURER/SUPPLIER
		QUANTITIES	TYPE	
8" W	2547 LF	2578 LF	CLASS 2 DIP	ATLANTIC STATE/PIPEWORK
6" W	108 LF	81 LF	"	"
4" W	252 LF	203 LF	"	"
12" W	107 LF			
12" x 8" Tee	2 each	2 EA	STAIN. STEEL	MUELLER/US FILTER
8" x 6" Tee	2 each	3 EA	MJ TEE	UNION FOUNDRY/US FILTER
8" x 4" Tee	2 each	1 EA	MJ TEE	"
8" x 2" Tee	3 each	3 EA	MJ TAP TEE	"
6" x 6" F.H. TEE	7 each	7 EA	MJ HOLE TEE	"
2" MV	3 each	3 EA	PRECAST	"
8" VALVES	8 each	8 EA	GATE VALVE	MUELLER/US FILTER
6" F.H. VALVES	7 each	7 EA	"	"
4" VALVES	1 each	1 EA	"	"
1" WVC	1779 LF	2059 LF	TYPE K	READING TUBE/US FILTER
2" COPPER TO MV		26 LF	"	"
F.H.	7 each	7 EA	CENTURION	MUELLER/US FILTER
6" Sewer	1147 LF	1138 LF	PVC/DIP	J.M. MANUFACTURING/US FILTER
4" Sewer Manholes	6 each	6 EA	PRECAST	ATLANTIC CONC.

NAME OF UTILITY CONTRACTOR: GAINES & CO.
 SURVEY AND DRAFTING DIV. CHECKBOX:
 AS-BUILT DATE: 10/13/00

TYPE OF BUILDING	Single Family Attached
NUMBER OF UNITS	00
NUMBER OF S.H.C.'s	0
NUMBER OF W.H.C.'s	01, 0-2 M.V.'s
DRAINAGE AREA	Little Retinent
TREATMENT PLANT	Little Retinent

GENERAL NOTES

- PART I**
- Approximate location of existing mains are shown. The contractor shall take all necessary precautions to protect existing mains and services and maintain uninterrupted supply. Any damage incurred shall be repaired immediately to the satisfaction of the Engineer at the Contractor's expense.
 - All horizontal controls are based on Maryland State Coordinates [North American Datum 1983 (NAD '83)].
 - All vertical controls are based on U.S.G.S. data.
 - All pipe elevations shown are invert elevations.
 - Clear all utilities by a minimum of 6". Clear all poles by 2'-0" minimum or tunnel as required. The owner has contacted the utility companies and has made arrangements for bracing of poles as shown on the drawings. In the event the contractor's work requires the bracing of additional poles, any cost incurred by the owner for bracing of additional poles or damages shall be deducted from money owed the contractor. The contractor shall coordinate with the utility companies to schedule the bracing of the poles.
 - For details not shown on the drawings, and for materials and construction methods use Howard County Design Manual, Volume IV, Standard Specifications and Detail for Construction (Latest Edition). The contractor shall have a copy of Volume IV on the job.
 - Where test pits have been made on existing utilities, they are noted by the symbol  at the location of the test pit. A note or notes containing the results of the test pit or pits is included on the drawings. Existing utilities in the vicinity of the proposed work for which test pits have not been dug shall be located by the contractor two weeks in advance of construction operations at his own expense.
 - Contractor shall notify the following utility companies or agencies at least (5) working days before starting work shown on these plans:

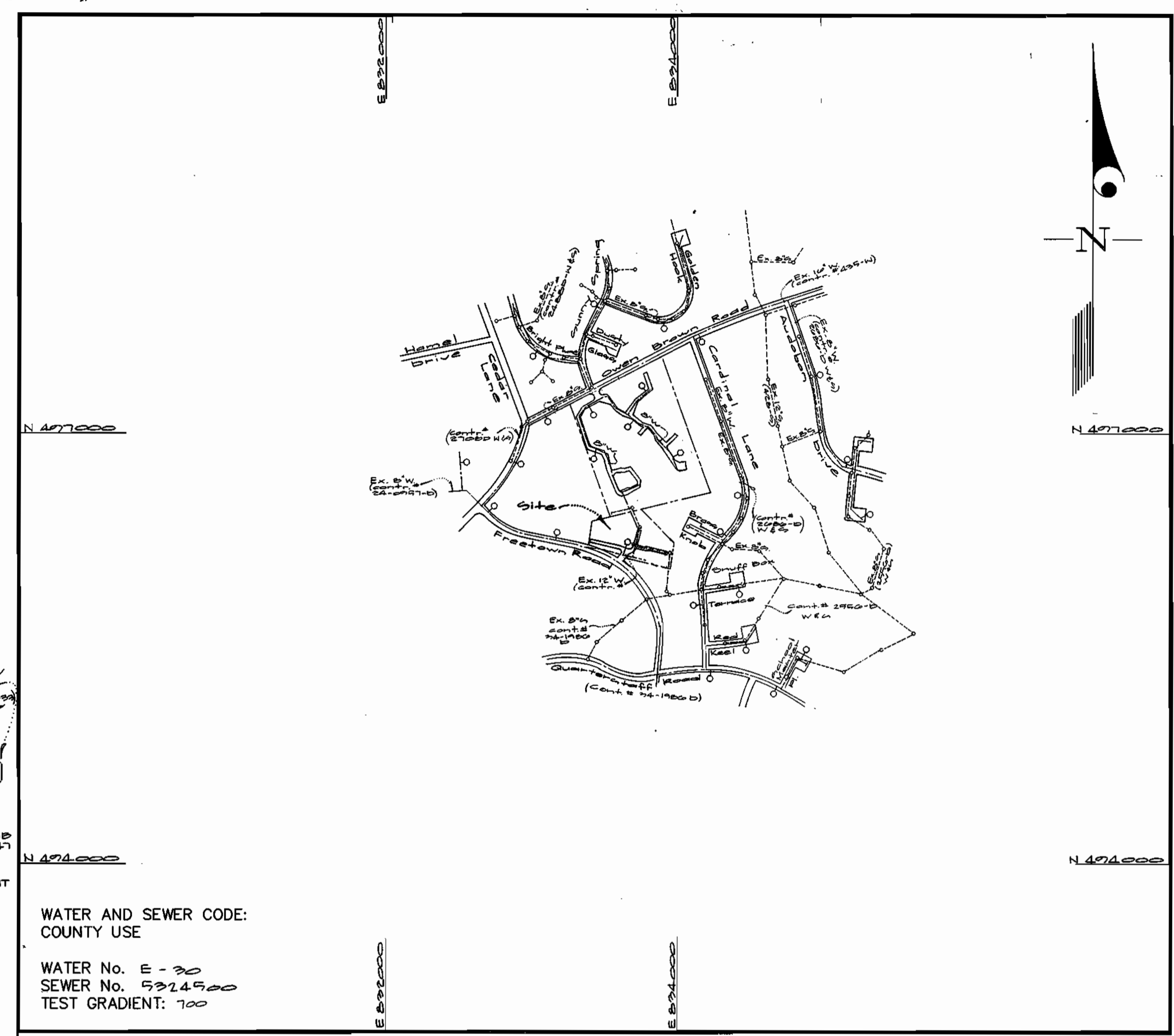
State Highway Administration	531-5533
BGE Contractor Services	850-4620
BGE Under Ground Damage Control	787-9068
Miss Utility	1-800-257-7777
Colonial Pipeline Co.	795-1390
Howard County Department of Public Works Bureau of Utilities	313-4900
 - Trees and shrubs are to be protected from damage to maximum extent. Trees and shrubs located within the construction strip are not to be removed or damaged by the contractor.
 - Contractor shall remove trees, stumps and roots along line of excavation. Payment for such removal shall be included in the unit price bid for construction of the main.
 - The contractor shall notify the Bureau of Highways, Howard County, at (410) 313-2450 at least five (5) working days before any open cut of any County road or boring/jacking operation on County roads for laying water/sewer mains or house connections. The approval of these drawings will constitute compliance with DPW requirement per Section 18.114(a) of the Howard County Code.

PART II - WATER

- All water mains to be D.I.P. Class 52 unless otherwise noted.
- Tops of all water mains to have a minimum of 3'-1/2" cover unless otherwise noted.
- Valves adjacent to tees shall be strapped to tees.
- All fittings shall be buttressed or anchored with concrete in accordance with the Standard Details unless otherwise provided for on the drawings.
- Fire hydrants shall be set to the bury line elevations shown on the drawings. All fire hydrants shall be restrained and buttressed with concrete in accordance with the Standard Details. Soil around the fire hydrant shall be compacted in accordance with Section 1000 and 1005 of the Standard Specifications.
- The contractor shall not operate any water main valves on the existing water system.
- All water house connections shall be for inside meter setting unless otherwise noted on plans or in specifications.
- For sprinkler system for all townhomes or multi-family dwelling units should have a minimum of 1' connection with a 3/4" meter.

PART III - SEWER

- All sewer mains shall be DIP and P.V.C. unless otherwise noted.
- All manholes shall be 4' -0" inside diameter unless otherwise noted.
- Force mains shall be D.I.P. only.
- Manholes shown with 12" and 16" walls are for brick manholes only.
- Manholes designated W.T. in plan and profile shall have watertight frame and covers, Standard Detail G5.52. Where watertight frame and cover is used, set top of frame 1'-6" above finished grade unless otherwise noted on drawings.
- House(s) with the symbol "C.N.S." indicates that cellar cannot be served.



VICINITY MAP
SCALE: 1"=600'

WATER AND SEWER CODE:
COUNTY USE
WATER No. E-30
SEWER No. 5324500
TEST GRADIENT: 700

AS BUILT

CONTRACT No. 24-3781-D
 Hickory Ridge Elderly Center
 HOWARD COUNTY, MARYLAND
 DEPARTMENT OF PUBLIC WORKS

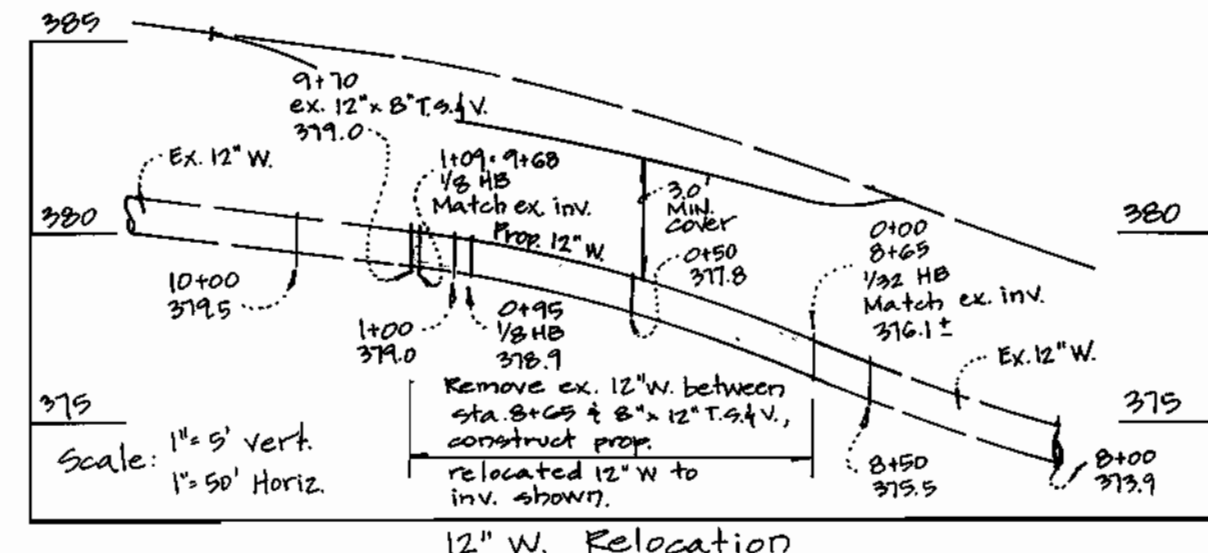
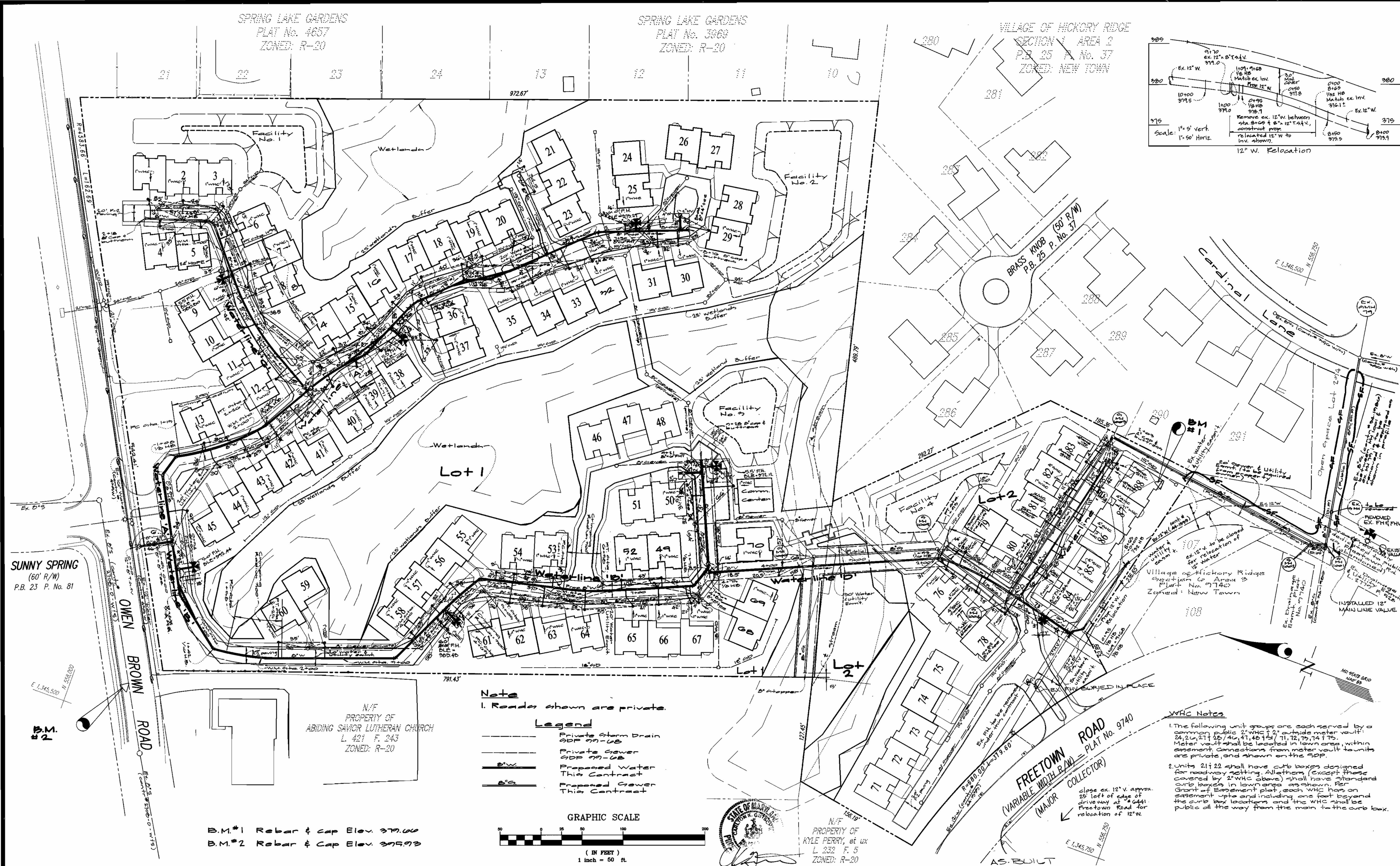
Sediment Control Measures will be implemented in accordance with Section 219 of the Specifications & with Road Drawings Plan 24-3781-D; Drawings sheets 7 & 8 for Sediment & Erosion Control.

REVIEWED FOR HOWARD SOIL CONSERVATION DISTRICT AND MEETS TECHNICAL REQUIREMENT. <i>Cheryl Simms/CS</i> 8/30/99 U.S.D.A. NATURAL RESOURCES CONSERVATION SERVICE THIS DEVELOPMENT PLAN IS APPROVED FOR SOIL EROSION AND SEDIMENT CONTROL BY THE HOWARD SOIL CONSERVATION DISTRICT. APPROVED: <i>Mark L. Kelly</i> 8/30/99 HOWARD C.C.D.	DEPARTMENT OF PUBLIC WORKS HOWARD COUNTY, MARYLAND <i>Robert M. Bump</i> 8-25-99 CHIEF, BUREAU OF UTILITIES	DEPARTMENT OF PLANNING AND ZONING HOWARD COUNTY, MARYLAND <i>Howard M. Dammus</i> 9/1/99 CHIEF, DEVELOPMENT ENGINEERING DIVISION	GLW GUTSCHICK LITTLE & WEBER, P.A. CIVIL ENGINEERS, SURVEYORS, PLANNERS, LANDSCAPE ARCHITECTS 3909 NATIONAL DRIVE - SUITE 250 - BURTONSVILLE OFFICE PARK - BURTONSVILLE, MARYLAND 20866 TEL: (410) 880-1820 ~ FAX: (301) 421-4186	DES: DEV DRN: KLP CHK: DEV DATE: AUG 1999	JAU 1 add 12" W to quantities 11/29/00 BY NO REVISION DATE	600' SCALE MAP NO. 25 BLOCK NO. 10 5th Election District
--	--	---	--	--	---	---

AS BUILT

GLW FILE No. 95093

Hickory Ridge Elderly Center Lots 1 & 2 Contract # 24-3781-D Howard County, Maryland	SCALE AS SHOWN SHEET 1 OF 2
---	--------------------------------

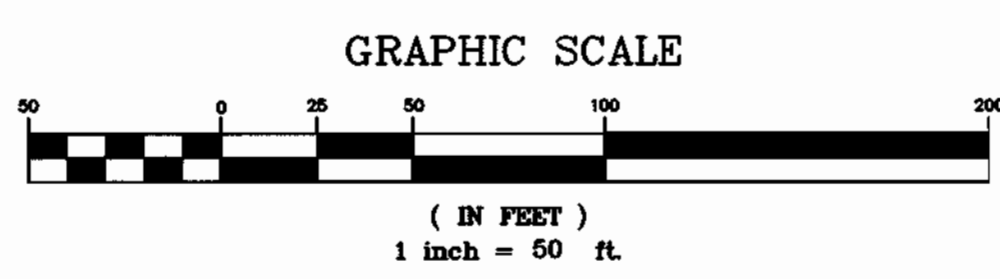


SUNNY SPRING
(60' R/W)
P.B. 23 P. No. 81

B.M.*1 Rebar & Cap Elev. 379.00
B.M.*2 Rebar & Cap Elev. 375.93

Note
1. Roads shown are private.

Legend
 --- Private Storm Drain
 --- Private Sewer
 --- Proposed Water This Contract
 --- Proposed Sewer This Contract



N/F
PROPERTY OF
KYLE PERRY, et ux
L. 332 F. 5
ZONED: R-20

WHC Notes
 1. The following unit groups are each served by a common public 2" WHC & 2" outside meter vault: 24, 26, 27, 28, 40, 41, 42, 43, 71, 72, 73, 74, 75. Meter vault shall be located in lawn area, within easement. Connections from meter vault to units are private, and shown on the SDP.
 2. Units 21 & 22 shall have curb boxes designed for roadway setting. All others (except those covered by 2" WHC above) shall have standard curb boxes in lawn area as shown. Per Grant of Easement plat, each WHC has an easement strip and including one foot beyond the curb box location, and the WHC shall be public all the way from the main to the curb box.

DEPARTMENT OF PUBLIC WORKS
HOWARD COUNTY, MARYLAND
Robert S. ... 8-25-99
CHIEF, BUREAU OF UTILITIES

DEPARTMENT OF PLANNING AND ZONING
HOWARD COUNTY, MARYLAND
... 9/1/99
CHIEF, DEVELOPMENT ENGINEERING DIVISION

GLW GUTSCHICK LITTLE & WEBER, P.A.
CIVIL ENGINEERS, LAND SURVEYORS, LAND PLANNERS, LANDSCAPE ARCHITECTS
3909 NATIONAL DRIVE - SUITE 250 - BURTONSVILLE OFFICE PARK
BURTONSVILLE, MARYLAND 20866
TEL: 301-421-4024 BALT: 410-880-1820 DC/VA: 301-989-2524 FAX: 301-421-4186

Prepared For:
Orchard Development Corporation
3777 Old Columbia Pike
Ellicott City, Maryland 21044
(410) 780-1800

DES: dev			
DRN: fmm			
CHK: dev			
DATE: Aug 1999			
BY: NO			
JAN 1	relocate 12" W. c. Bldg. ex. 28 add profile of water	1/29/00	
REVISION		DATE	

WATER & SEWER PLAN
600' SCALE MAP NO. 39 BLOCK NO. 18

HICKORY RIDGE ELDERLY CENTER
LOTS 1 AND 2
Contract # 24-3701-D
CLARKSVILLE ELECTION DISTRICT No. 5
HOWARD COUNTY, MARYLAND
SCALE AS SHOWN
SHEET 2 OF 3

ITEMS	QUANTITIES ESTIMATED	AS-BUILT		
		QUANTITIES	TYPE	MANUFACTURER/SUPPLIER
8" W	2941 LF	2978 LF	CL52 DIP	ATLANTIC STATE/PIPE INC.
6" W	108 LF	81 LF	"	"
4" W	292 LF	205 LF	"	"
12" W	109 LF			
12" x 8" TEE	2 each	2 EA	STAIN STEEL	MUELLER/US FILTER
8" x 6" TEE	2 each	3 EA	MJ TEE	UNION FOUNDRY/US FILTER
8" x 4" TEE	3 each	1 EA	MJ TEE	"
8" x 2" TEE		3 EA	MJ TAP TEE	"
6" x 6" F.H. TEE		7 EA	MJ HOULETTE	"
2" MV	3 each	3 EA	PRECAST	"
2" Valve	8 each	8 EA	GATE VALVE	MUELLER/US FILTER
6" F.H. VALVES		7 EA	"	"
4" VALVES		1 EA	"	"
1" WVC	1770 LF	2088 LF	TYPE K	READING TUBES/US FILTER
2" COPPER TO MV		28 LF	"	"
EH	7 each	7 EA	CENTURION	MUELLER/US FILTER
8" Sewer	1147 LF	1138 LF	PVC/DIP	J.M. MANUFACTURING/US FILTER
4" Sewer Manholes	6 each	6 EA	PRECAST	ATLANTIC CONC.

NAME OF UTILITY CONTRACTOR: GAINES & CO.

SURVEY AND DRAFTING DIV. CHECKBOX: AS-BUILT DATE: 10/13/00

TYPE OF BUILDING	Single Family Attached
NUMBER OF UNITS	08
NUMBER OF S.H.C.'s	0
NUMBER OF W.H.C.'s	01, 0-2 MV's
DRAINAGE AREA	Little Potomac
TREATMENT PLANT	Little Potomac

GENERAL NOTES

- PART I
- Approximate location of existing mains are shown. The contractor shall take all necessary precautions to protect existing mains and services and maintain uninterrupted supply. Any damage incurred shall be repaired immediately to the satisfaction of the Engineer at the Contractor's expense.
 - All horizontal controls are based on Maryland State Coordinates [North American Datum 1983 (NAD '83)].
 - All vertical controls are based on U.S.C.S. data.
 - All pipe elevations shown are invert elevations.
 - Clear all utilities by a minimum of 6". Clear all poles by 2'-0" minimum or tunnel as required. The owner has contacted the utility companies and has made arrangements for bracing of poles as shown on the drawings. In the event the contractor's work requires the bracing of additional poles, any cost incurred by the owner for bracing of additional poles or damages shall be deducted from money owed the contractor. The contractor shall coordinate with the utility companies to schedule the bracing of the poles.
 - For details not shown on the drawings, and for materials and construction methods use Howard County Design Manual, Volume IV, Standard Specifications and Detail for Construction (Latest Edition). The contractor shall have a copy of Volume IV on the job.
 - Where test pits have been made on existing utilities, they are noted by the symbol \blacksquare at the location of the test pit. A note or notes containing the results of the test pit or pits is included on the drawings. Existing utilities in the vicinity of the proposed work for which test pits have not been dug shall be located by the contractor two weeks in advance of construction operations at his own expense.
 - Contractor shall notify the following utility companies or agencies at least (5) working days before starting work shown on these plans:

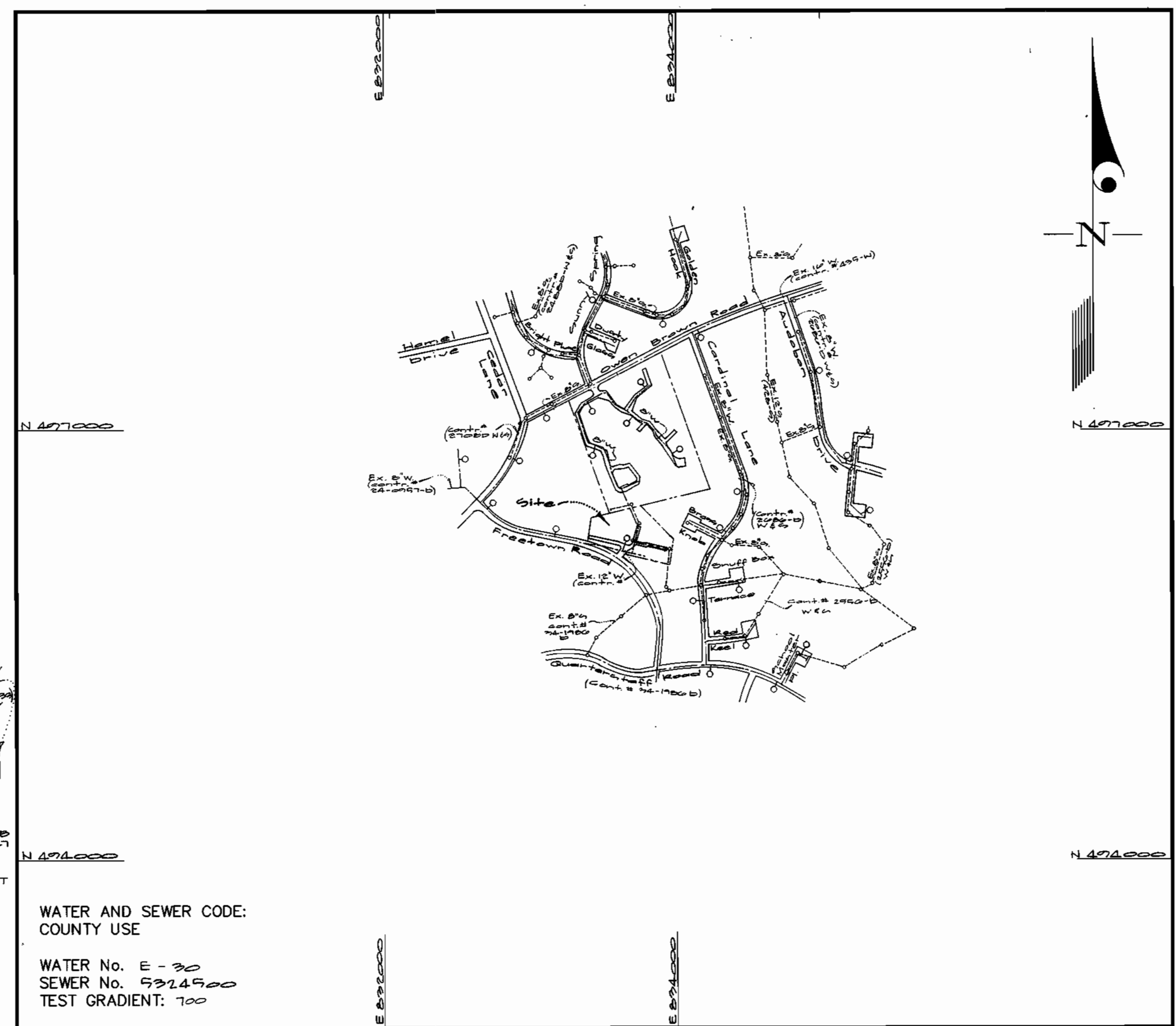
State Highway Administration	531-5533
BGE Contractor Services	850-4620
BGE Under Ground Damage Control	787-9068
Miss Utility	1-800-257-7777
Colonial Pipeline Co.	795-1390
Howard County Department of Public Works Bureau of Utilities	313-4900
 - Trees and shrubs are to be protected from damage to maximum extent. Trees and shrubs located within the construction strip are not to be removed or damaged by the contractor.
 - Contractor shall remove trees, stumps and roots along line of excavation. Payment for such removal shall be included in the unit price bid for construction of the main.
 - The contractor shall notify the Bureau of Highways, Howard County, at (410) 313-2450 at least five (5) working days before any open cut of any County road or boring/jacking operation on County roads for laying water/sewer mains or house connections. The approval of these drawings will constitute compliance with DPW requirement per Section 18.11(a) of the Howard County Code.

PART II - WATER

- All water mains to be D.I.P. Class 52 unless otherwise noted.
- Tops of all water mains to have a minimum of 3-1/2' cover unless otherwise noted.
- Valves adjacent to tees shall be strapped to tees.
- All fittings shall be buttressed or anchored with concrete in accordance with the Standard Details unless otherwise provided for on the drawings.
- Fire hydrants shall be set to the bury line elevations shown on the drawings. All fire hydrants shall be restrained and buttressed with concrete in accordance with the Standard Details. Soil around the fire hydrant shall be compacted in accordance with Section 1000 and 1005 of the Standard Specifications.
- The contractor shall not operate any water main valves on the existing water system.
- All water house connections shall be for inside meter setting unless otherwise noted on plans or in specifications.
- For sprinkler system for all townhomes or multi-family dwelling units shall have a minimum of 1' connection with a 3/4" meter.

PART III - SEWER

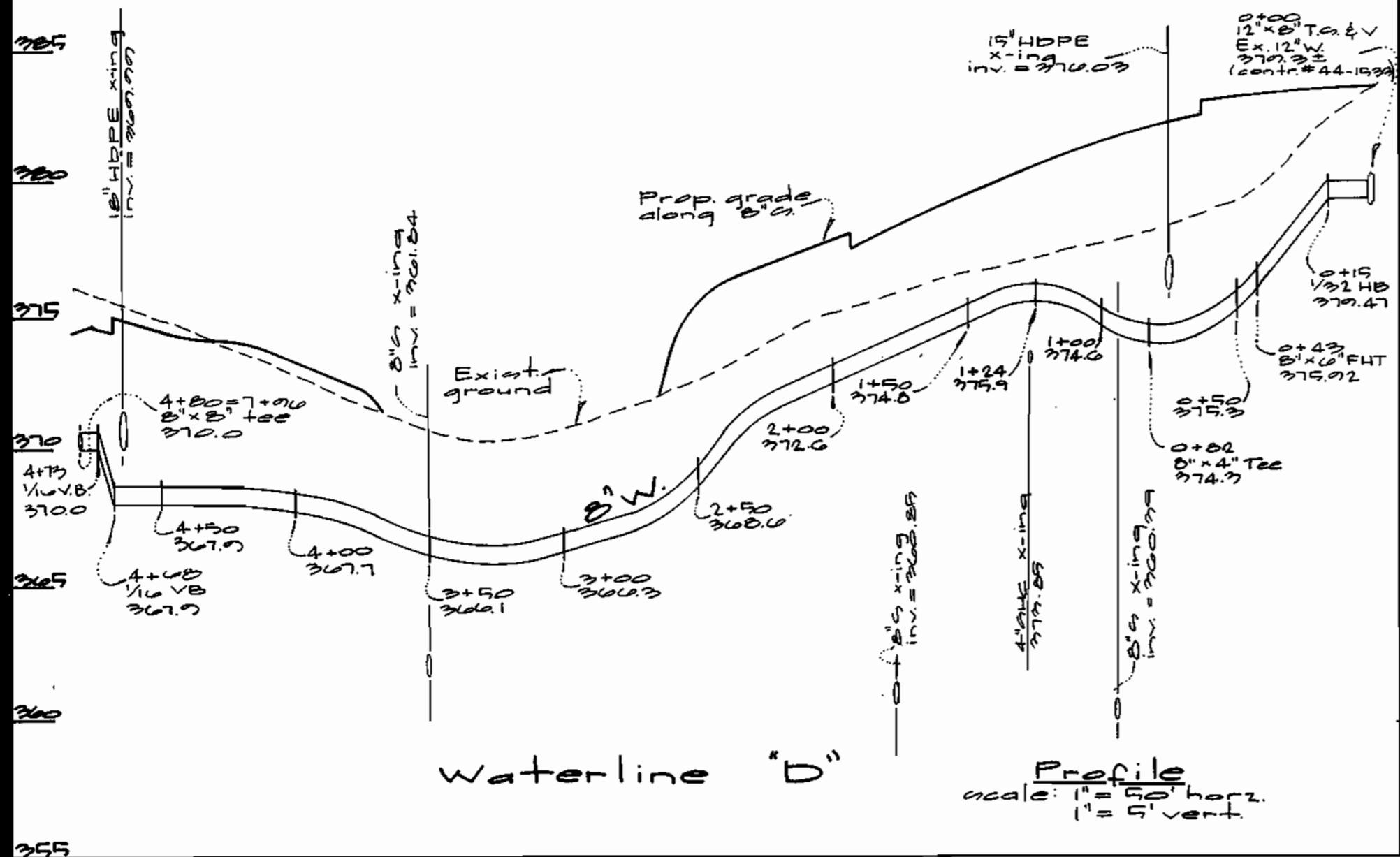
- All sewer mains shall be DIP and P.V.C. unless otherwise noted.
- All manholes shall be 4'-0" inside diameter unless otherwise noted.
- Force mains shall be D.I.P. only.
- Manholes shown with 12" and 16" walls are for brick manholes only.
- Manholes designated W.T. in plan and profile shall have watertight frame and covers, Standard Detail G5.52. Where watertight frame and cover is used, set top of frame 1'-6" above finished grade unless otherwise noted on drawings.
- House(s) with the symbol "C.N.S." indicates that cellar cannot be served.



VICINITY MAP
SCALE: 1"=600'

WATER AND SEWER CODE:
COUNTY USE

WATER No. E-30
SEWER No. 5324900
TEST GRADIENT: 700



CONTRACT No. 24-3781-D

Hickory Ridge Elderly Center
HOWARD COUNTY, MARYLAND
DEPARTMENT OF PUBLIC WORKS

Sediment Control Measures will be implemented in accordance with Section 219 of the Specifications & with Road Drawings Plan 507-7-60; Drawings sheets 7 & 8 for Sediment & Erosion Control.

REVIEWED FOR HOWARD SOIL CONSERVATION DISTRICT AND MEETS TECHNICAL REQUIREMENT.

Cheryl Swain/105 8/30/99
SIGNATURE DATE

U.S.D.A. NATURAL RESOURCES CONSERVATION SERVICE

THIS DEVELOPMENT PLAN IS APPROVED FOR SOIL EROSION AND SEDIMENT CONTROL BY THE HOWARD SOIL CONSERVATION DISTRICT.

APPROVED: *Mark L. Kelly* 8/30/99
HOWARD C.C.D. DATE

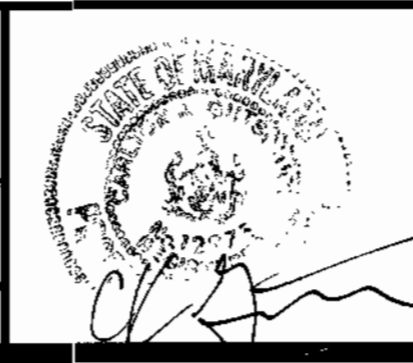
DEPARTMENT OF PUBLIC WORKS
HOWARD COUNTY, MARYLAND

Robert H. Bump 8-25-99
CHIEF, BUREAU OF UTILITIES DATE

DEPARTMENT OF PLANNING AND ZONING
HOWARD COUNTY, MARYLAND

Mark L. Kelly 9/1/99
CHIEF, DEVELOPMENT ENGINEERING DIVISION DATE

GLW GUTSCHICK LITTLE & WEBER, P.A.
CIVIL ENGINEERS, SURVEYORS, PLANNERS, LANDSCAPE ARCHITECTS
3909 NATIONAL DRIVE - SUITE 250 - BURTONSVILLE OFFICE PARK - BURTONSVILLE, MARYLAND 20866
TEL: (410) 880-1820 ~ FAX: (301) 421-4186



DES: DEV			
DRN: KLP			
CHK: DEV			
DATE: AUG 1999			
BY NO			
REVISION			
DATE			

AS BUILT

Cover Sheet

600' SCALE MAP NO. 25 BLOCK NO. 10

Hickory Ridge Elderly Center
Lots 1 & 2

Contract # 24-3781-D
5th Election District
Howard County, Maryland

GLW FILE No. 95053

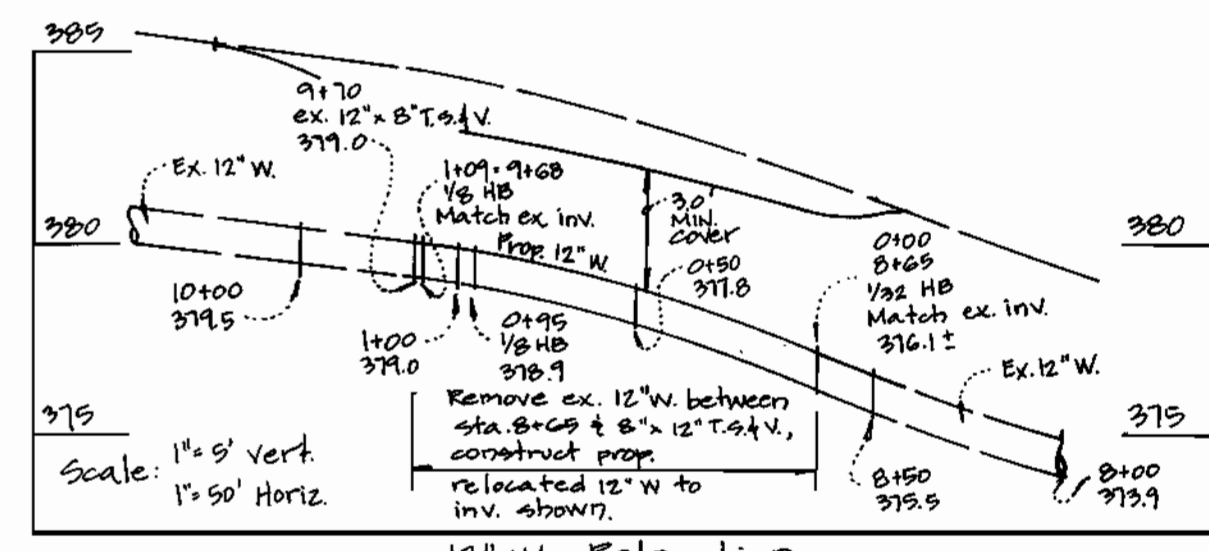
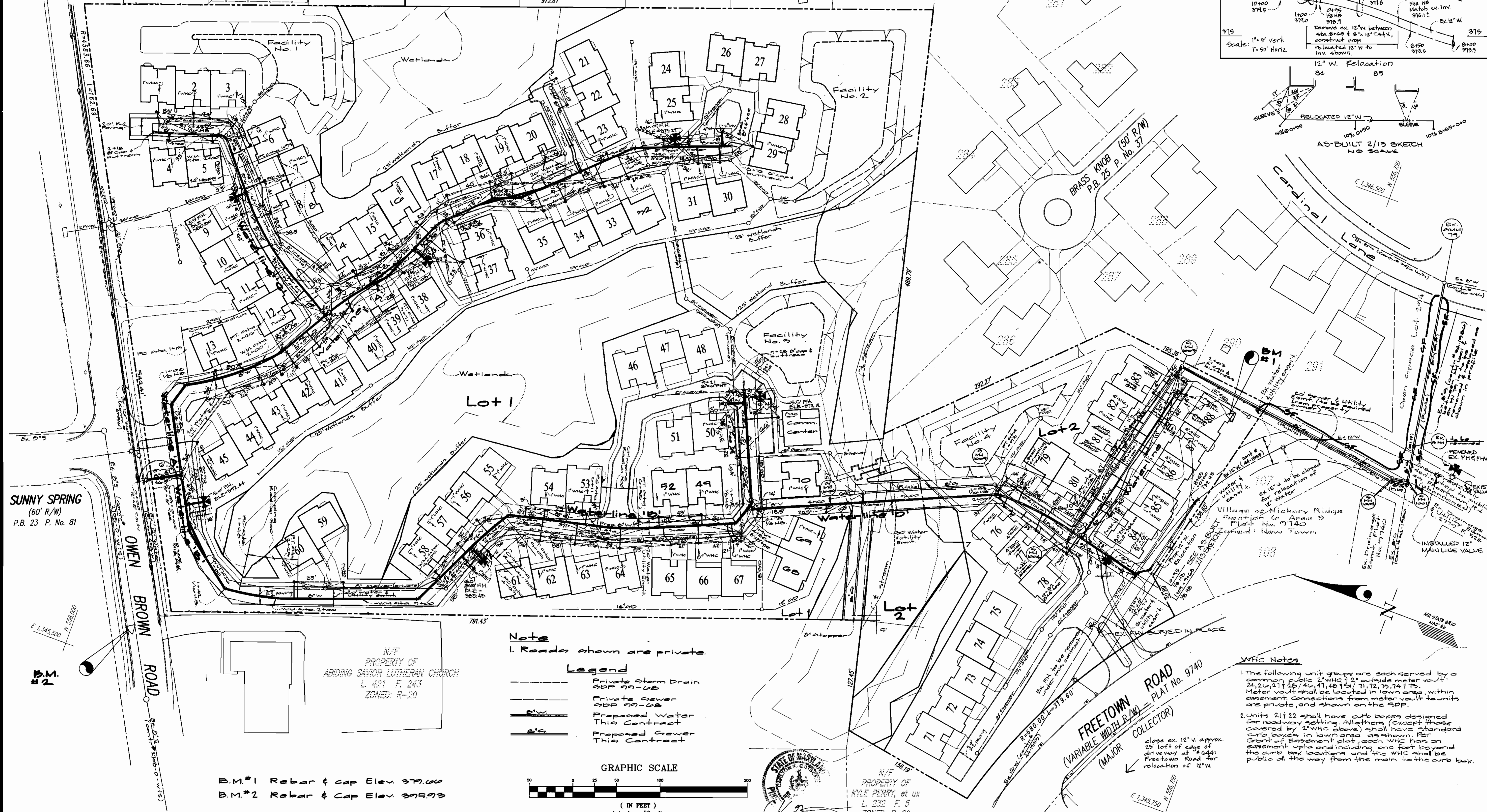
SCALE AS SHOWN

SHEET 1 OF 2

SPRING LAKE GARDENS
PLAT No. 4687
ZONED: R-20

SPRING LAKE GARDENS
PLAT No. 3869
ZONED: R-20

VILLAGE OF HICKORY RIDGE
SECTION 1 AREA 2
P.B. 25 P. No. 37
ZONED: NEW TOWN



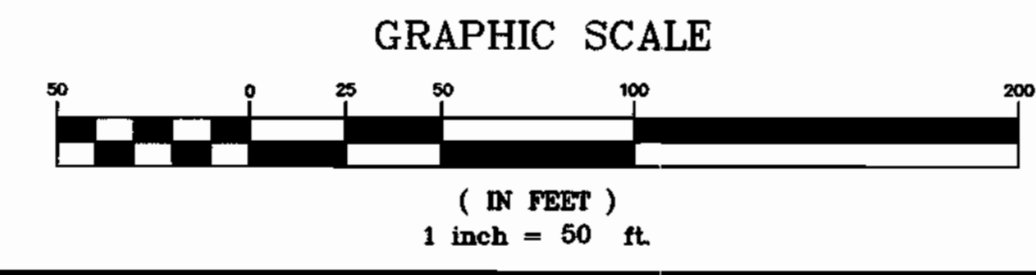
SUNNY SPRING
(60' R/W)
P.B. 23 P. No. 81

OWEN ROAD
60' R/W
P.B. 23 P. No. 81

N/F PROPERTY OF
ABIDING SAVIOR LUTHERAN CHURCH
L. 421 F. 243
ZONED: R-20

Note
1. Roads shown are private.

Legend
 --- Private Storm Drain
 --- Private Sewer
 --- Prepared Water This Contract
 --- Prepared Sewer This Contract



B.M.#1 Rebar & Cap Elev. 379.00
B.M.#2 Rebar & Cap Elev. 375.93

N/F PROPERTY OF
KYLE PERRY, et ux
L. 232 F. 5
ZONED: R-20

FREE TOWN ROAD
(VARIABLE WIDTH R/W)
(MAJOR COLLECTOR)
PLAT No. 9740

W/C Notes
 1. The following unit groups are each served by a common public 2" W/C 2' outside meter vault:
 24, 25, 27, 28, 41, 48, 154, 171, 172, 173, 174, 175.
 Meter vault shall be located in lawn area, within easement. Connections from meter vault to units are private, and shown on the SDP.
 2. Units 21 & 22 shall have curb boxes designed for roadway setting. All others (except those covered by 2" W/C above) shall have standard curb boxes in lawn area as shown. For Grant of Easement plat, each W/C has an easement ups and including one foot beyond the curb box location and the W/C shall be public all the way from the main to the curb box.

DEPARTMENT OF PUBLIC WORKS
HOWARD COUNTY, MARYLAND
9/1/99

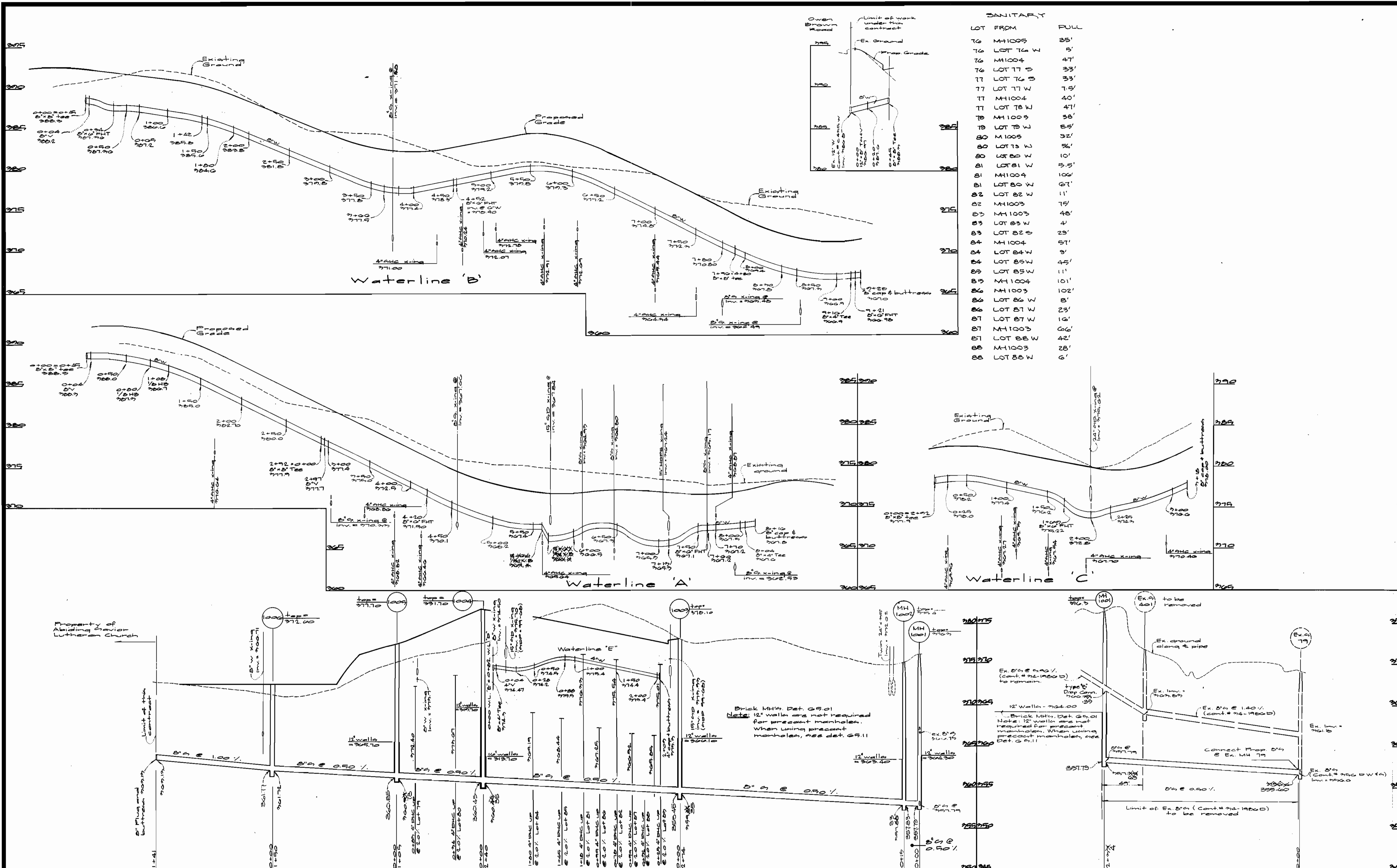
DEPARTMENT OF PLANNING AND ZONING
HOWARD COUNTY, MARYLAND
9/1/99

GLW GUTSCHICK LITTLE & WEBER, P.A.
CIVIL ENGINEERS, LAND SURVEYORS, LAND PLANNERS, LANDSCAPE ARCHITECTS
3909 NATIONAL DRIVE - SUITE 250 - BURTONSVILLE OFFICE PARK
BURTONSVILLE, MARYLAND 20866
TEL: 301-421-4024 BAL: 410-880-1820 DC/VA: 301-959-2524 FAX: 301-421-4186

DES: dev					
DRN: fmm					
CHK: dev					
DATE: Aug 1999	JUL 1	relocate 12" W. C. Bldg. 84-88		4/29/00	
BY: NO		add profile of water			
		REVISION		DATE	

WATER & SEWER PLAN
600' SCALE MAP NO. 25 BLOCK NO. 18

HICKORY RIDGE ELDERLY CENTER
LOTS 1 AND 2
Contract # 24-3781-D
CLARKSVILLE ELECTION DISTRICT No. 5
HOWARD COUNTY, MARYLAND
SCALE AS SHOWN
SHEET 2 OF 3



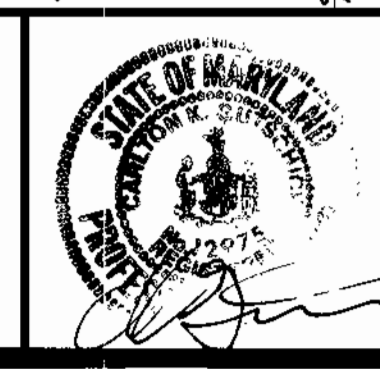
DEPARTMENT OF PUBLIC WORKS
 HOWARD COUNTY, MARYLAND

Robert Berman 8-25-99
 CHIEF, BUREAU OF UTILITIES

DEPARTMENT OF PLANNING AND ZONING
 HOWARD COUNTY, MARYLAND

Michael Damman 9/1/99
 CHIEF, DEVELOPMENT ENGINEERING DIVISION

GLW GUTSCHICK LITTLE & WEBER, P.A.
 CIVIL ENGINEERS, LAND SURVEYORS, LAND PLANNERS, LANDSCAPE ARCHITECTS
 3909 NATIONAL DRIVE - SUITE 250 - BURTONSVILLE OFFICE PARK
 BURTONSVILLE, MARYLAND 20886
 TEL: 301-421-4024 BAL: 410-880-1820 DC/VA: 301-989-2524 FAX: 301-421-4186



DES: DEV			
DRN: KLP			
CHK: DEV			
DATE: Aug 1999	BY: NO	REVISION	DATE

Water & Sewer Profiles
 600' SCALE MAP NO. 25 BLOCK NO. 10

Hickory Ridge Elderly Center
 Lots 1 & 2
 Contract # 24-3781-0
 Election District No. 5
 Howard County, Maryland

SCALE AS SHOWN
 SHEET 2 OF 2