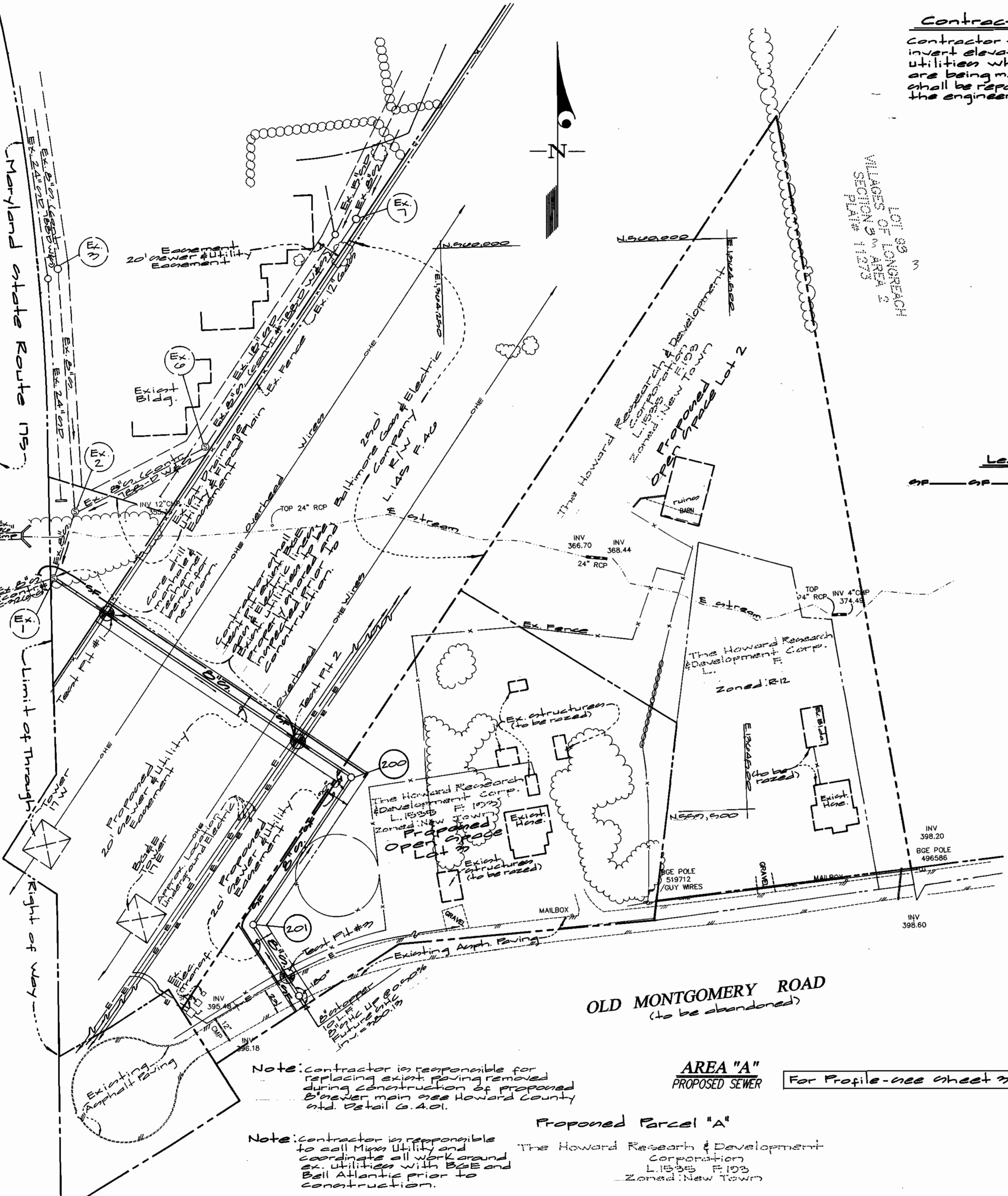


Contractor's Note

Contractor to verify invert elevations of all existing utilities where connections are being made. Any discrepancies shall be reported immediately to the engineer.

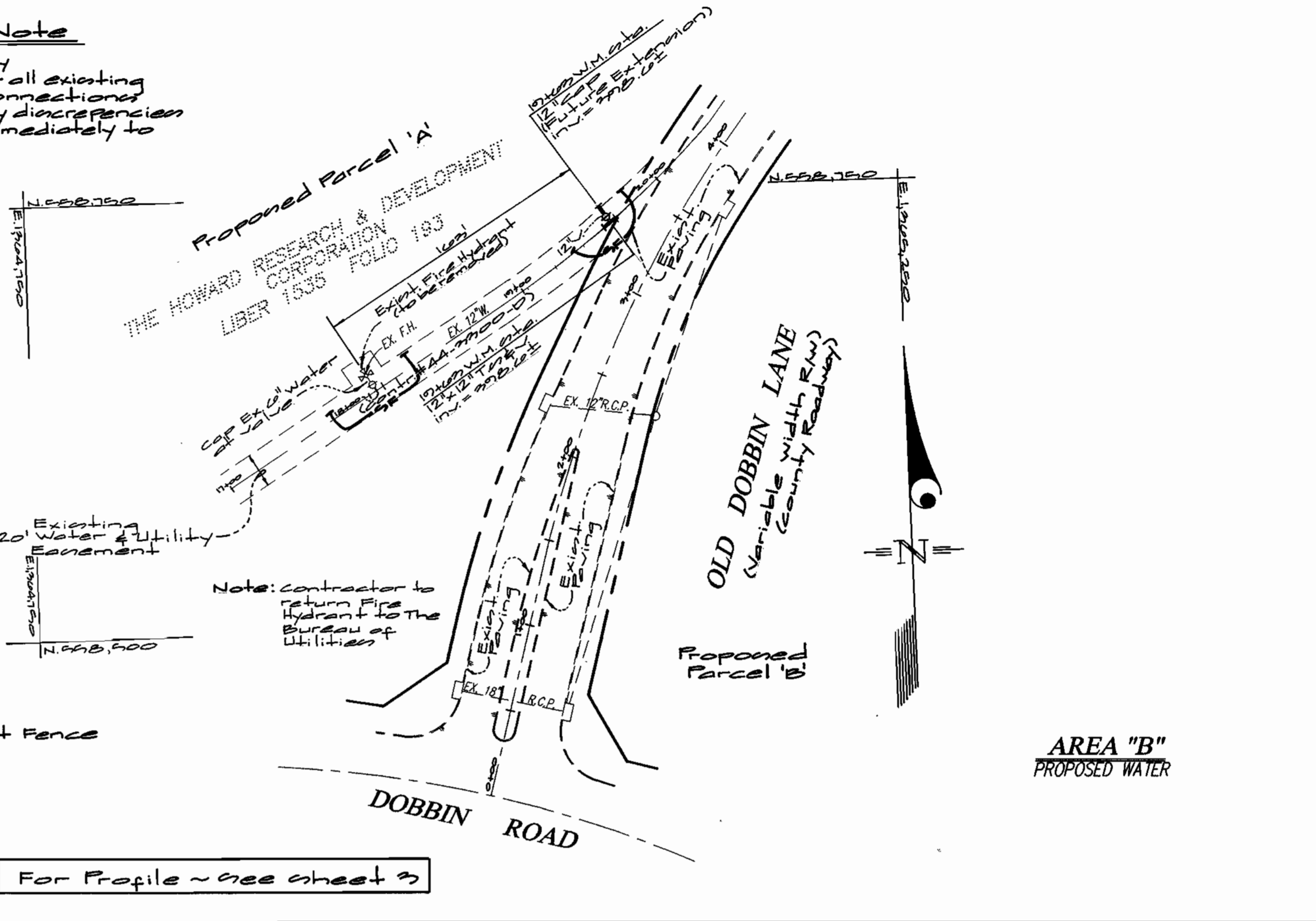


Note: contractor is responsible for replacing existing paving removed during construction of proposed sewer main see Howard County std. Detail G.4.01.

Note: contractor is responsible to call Miss Utility and coordinate all work around ex. utilities with B&E and Bell Atlantic prior to construction.

AREA "A"
PROPOSED SEWER

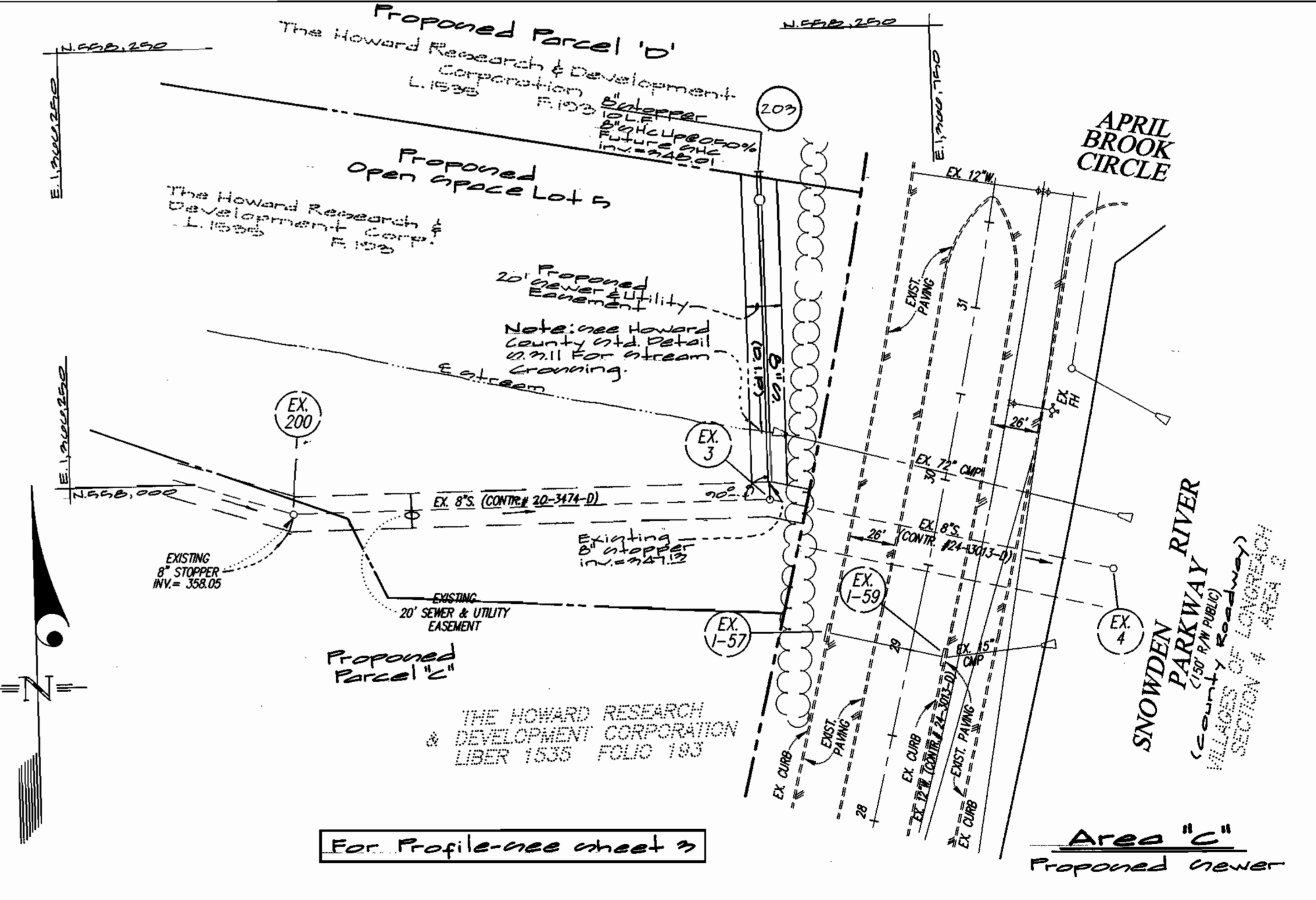
For Profile - see sheet 3



Note: contractor to return F.I. to the Bureau of Utilities

AREA "B"
PROPOSED WATER

For Profile - see sheet 3



For Profile - see sheet 3

Area "C"
Proposed Sewer

DEPARTMENT OF PUBLIC WORKS
HOWARD COUNTY, MARYLAND
10-7-99
DATE

DEPARTMENT OF PLANNING AND ZONING
HOWARD COUNTY, MARYLAND
10/10/99
DATE

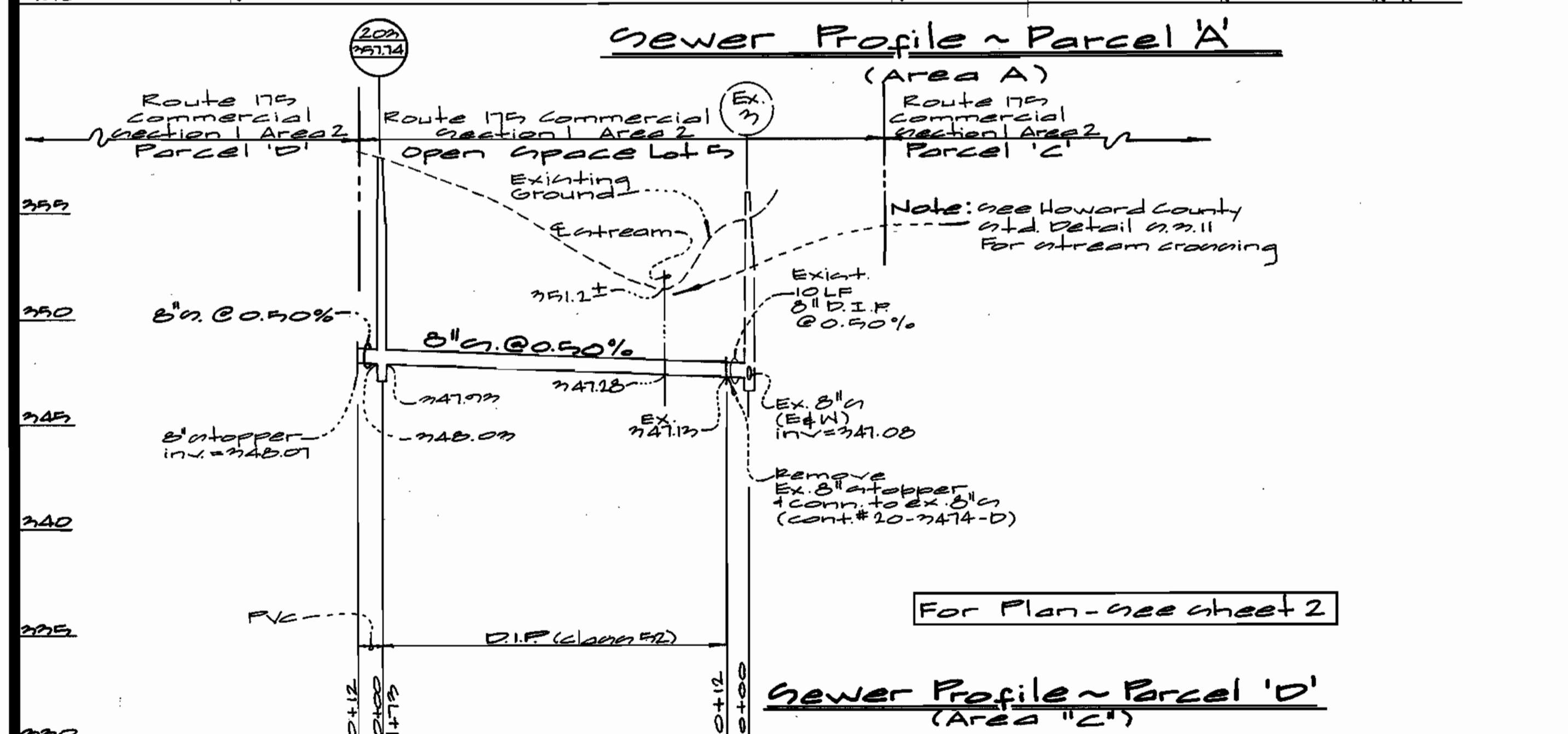
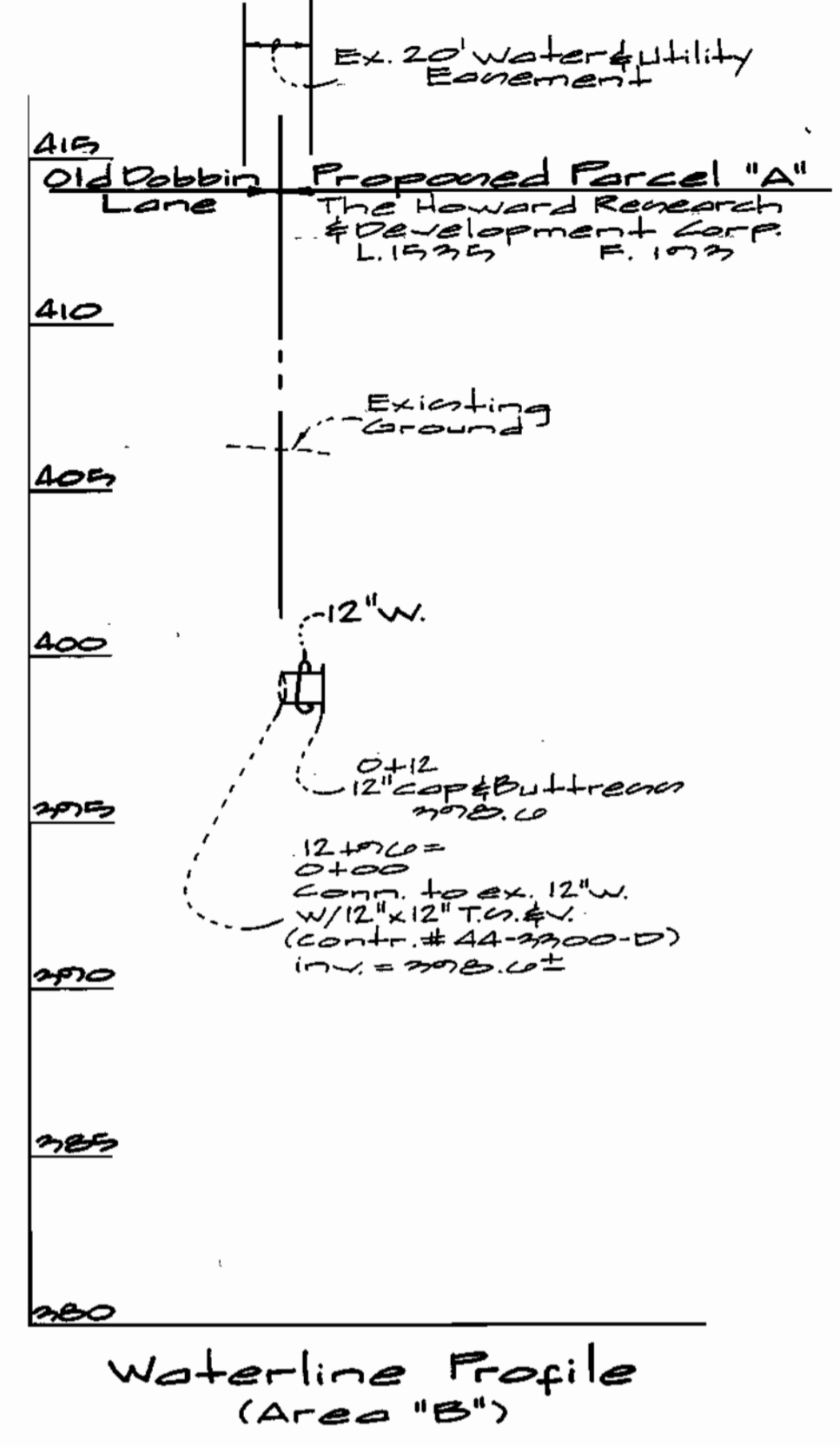
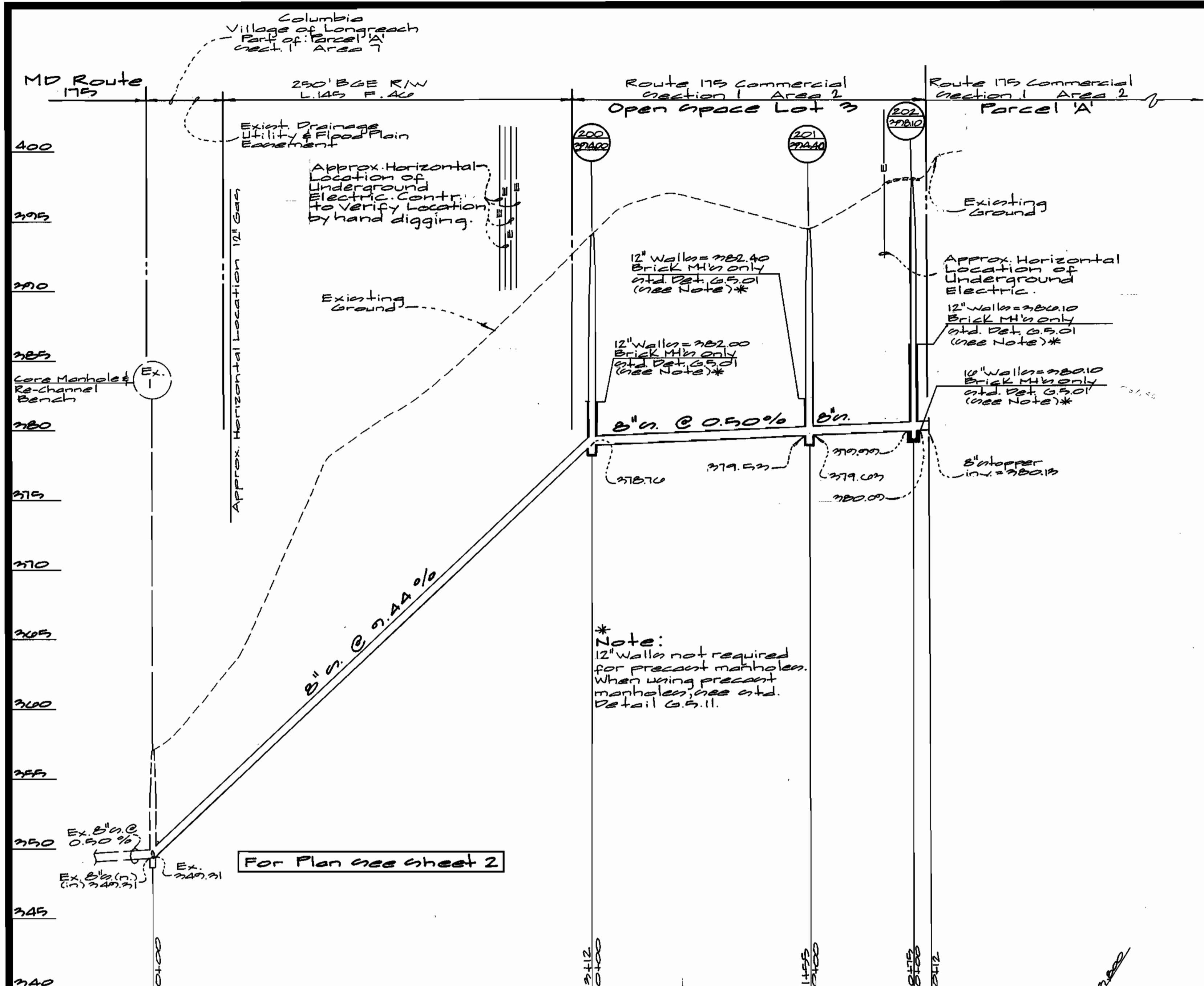
GLW GUTSCHICK LITTLE & WEBER, P.A.
CIVIL ENGINEERS, LAND SURVEYORS, LAND PLANNERS, LANDSCAPE ARCHITECTS
3008 NATIONAL DRIVE - SUITE 200 - BURTONTOWNE OFFICE PARK
BURTONTOWNE, MARYLAND 20886
TEL: 301-421-4024 BALT: 410-880-1820 DC/VA: 301-880-2524 FAX: 301-421-4186



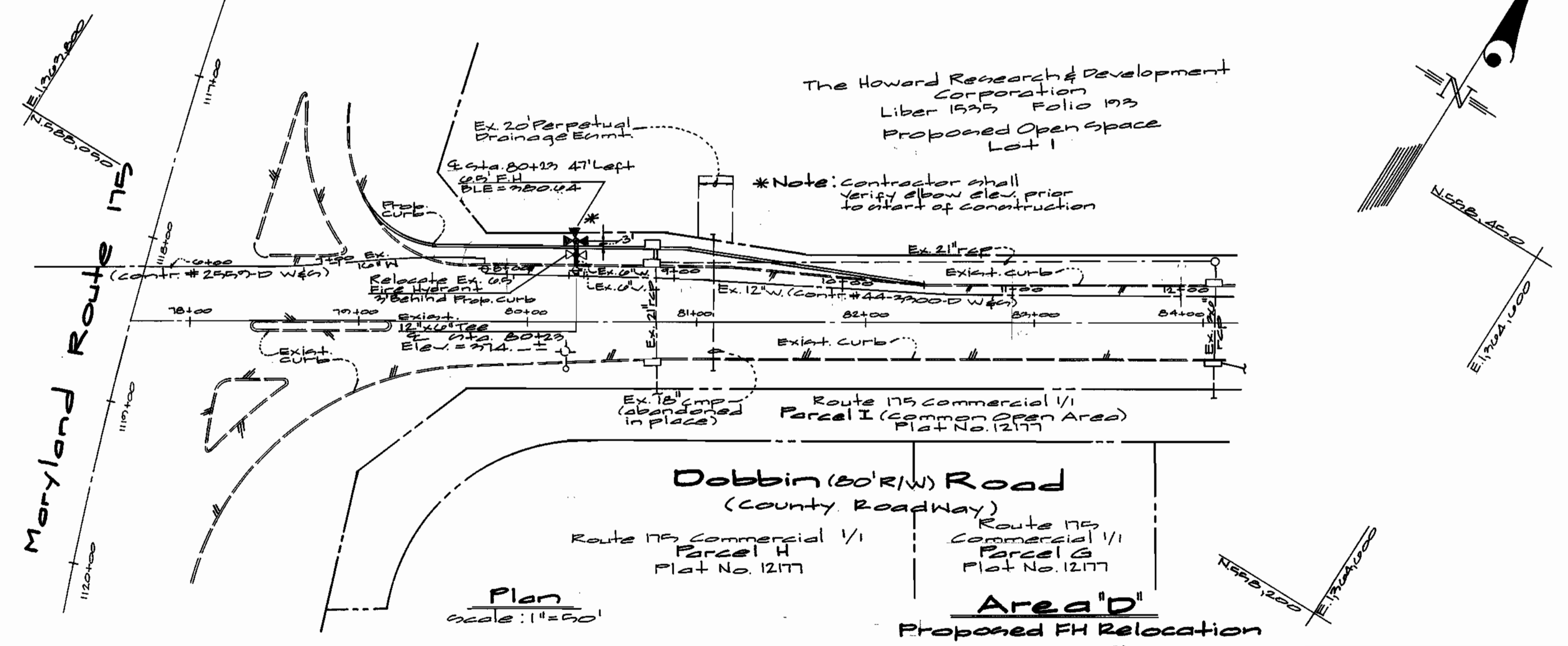
DES: wsl					
DRN: wsl					
CHK: rdt					
DATE: 10/10/99					
BY	NO	REVISION	DATE	600' SCALE MAP NO.	BLOCK NO.

Water & Sewer Plan
Scale: 1"=50'
600' SCALE MAP NO. 291 BLOCK NO. 1315

Route 175 Commercial Section 1 Area 2
Parcels A thru D and Open Space Lots 1 thru 5
Election Dist. No. 6 Howard County, Maryland
Contract No. 24-3713-D
SCALE AS SHOWN
SHEET 2 OF 3



Contractor's Note
 Contractor shall verify invert elevations at all existing utilities. Where connections are being made, any discrepancies shall be reported immediately to the Engineer.



DEPARTMENT OF PUBLIC WORKS
 HOWARD COUNTY, MARYLAND
 Robert B. Berman
 CHIEF, BUREAU OF UTILITIES
 10-7-99

DEPARTMENT OF PLANNING AND ZONING
 HOWARD COUNTY, MARYLAND
 [Signature]
 CHIEF, DEVELOPMENT ENGINEERING DIVISION
 10/10/99

GLW GUTSCHICK LITTLE & WEBER, P.A.
 CIVIL ENGINEERS, LAND SURVEYORS, LAND PLANNERS, LANDSCAPE ARCHITECTS
 3909 NATIONAL DRIVE - SUITE 200 - BURTONSVILLE OFFICE PARK
 BURTONSVILLE, MARYLAND 20886
 TEL: 301-421-4624 BALT: 410-680-1820 DC/VA: 301-988-2524 FAX: 301-421-4186



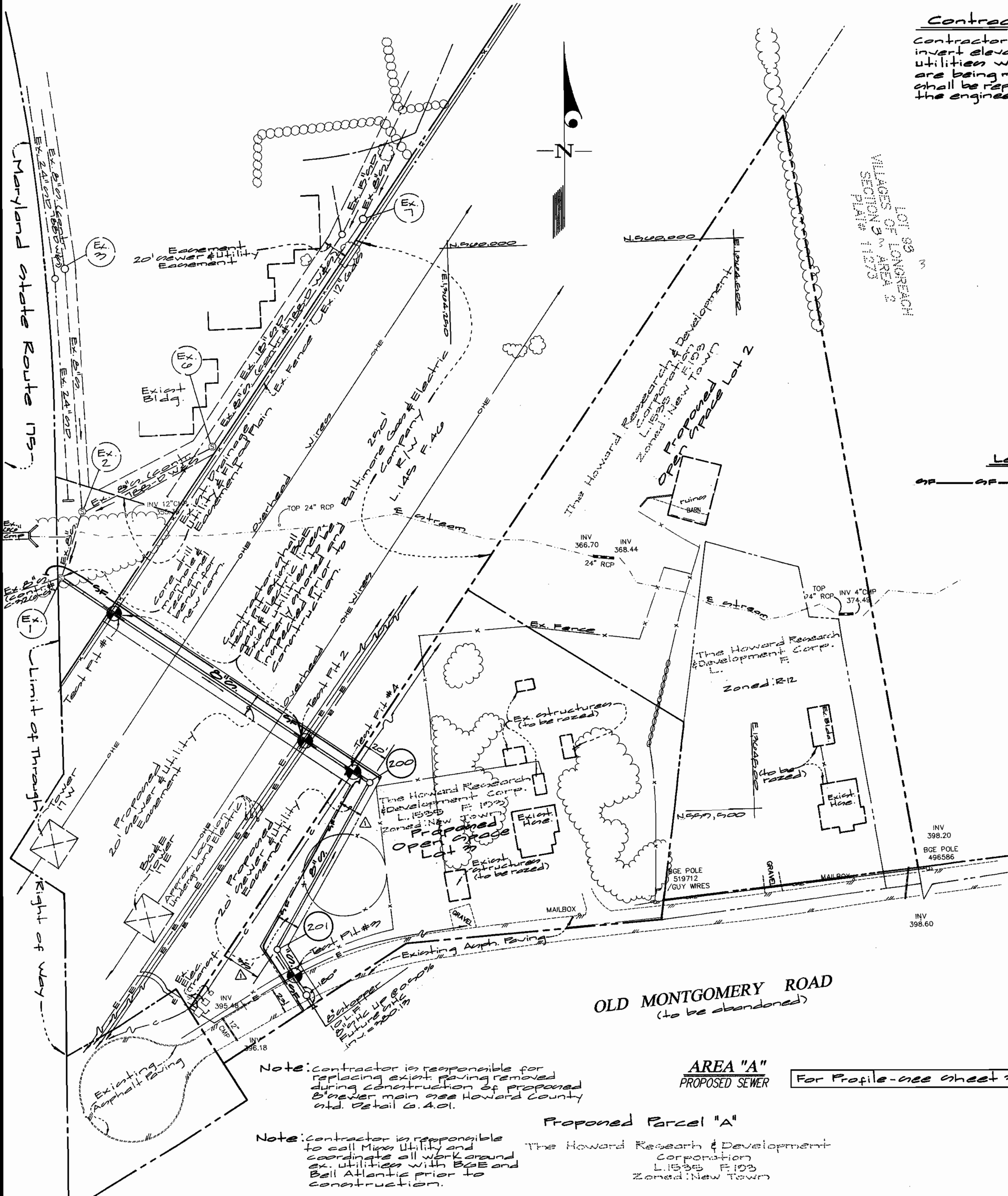
DES: WBJ					
DRN: WBJ					
CHK: not					
DATE: 10/10/99	BY: NO	REVISION:	DATE:	600' SCALE MAP NO. 24-3173-D	BLOCK NO. 12177

Water Plan
 scale: 1"=50'
 Water & Sewer Profiles
 scale:
 Horizontal: 1"=50'
 Vertical: 1"=5'

Route 175 Commercial Section 1 Area 2
 Parcels A thru D and Open Space Lots 1 thru 5
 Election Dist. No. 0 Howard County, Maryland
 Contract No. 24-3173-D
 SCALE AS SHOWN
 SHEET 2 OF 22

Contractor's Note

Contractor to verify invert elevations of all existing utilities where connections are being made. Any discrepancies shall be reported immediately to the engineer.



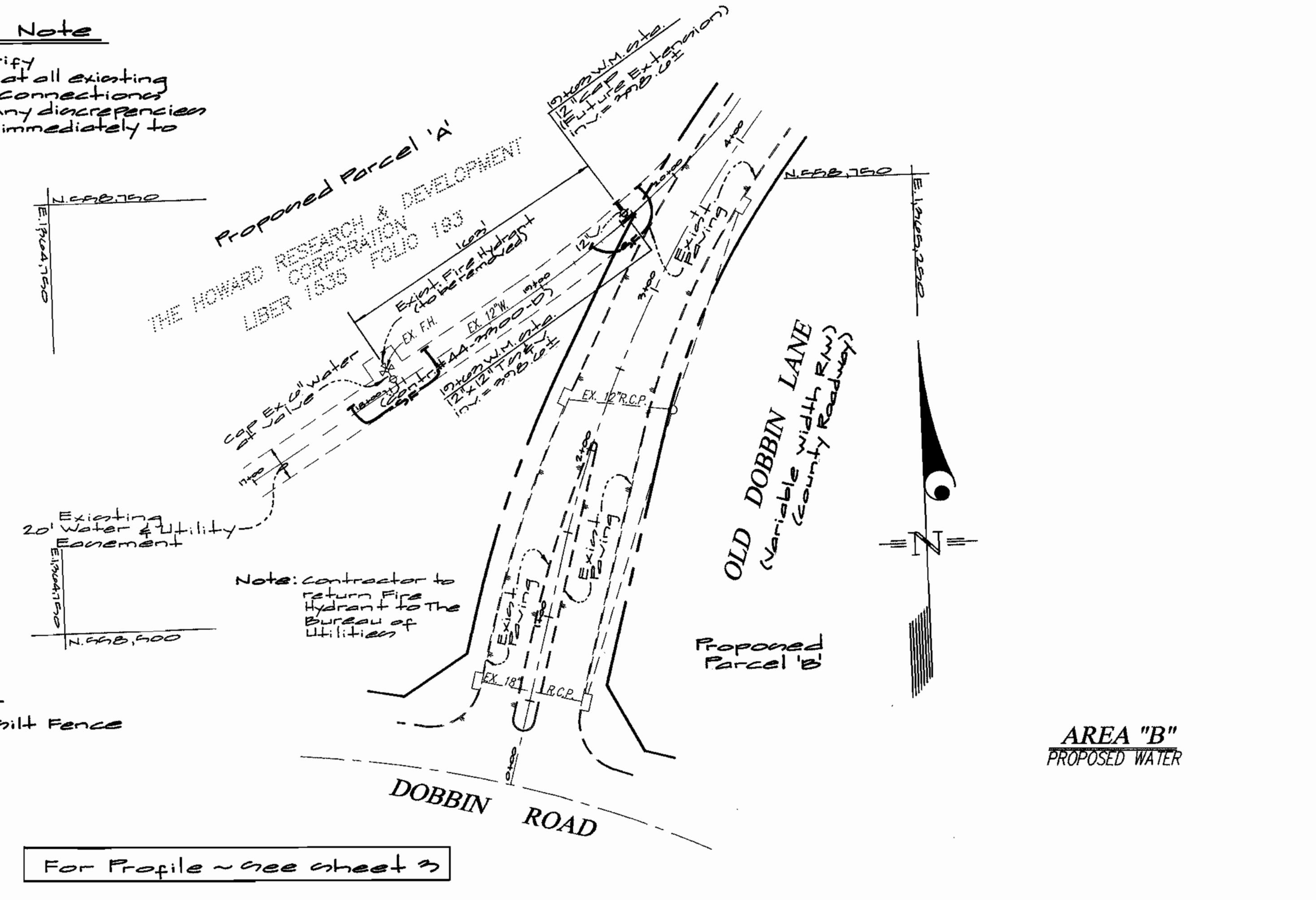
Note: contractor is responsible for replacing exist paving removed during construction of proposed sewer main see Howard County Ord. Detail G. 4.01.

Note: contractor is responsible to call tips utility and coordinate all work around ex. utilities with BGE and Bell Atlantic prior to construction.

AREA "A"
PROPOSED SEWER

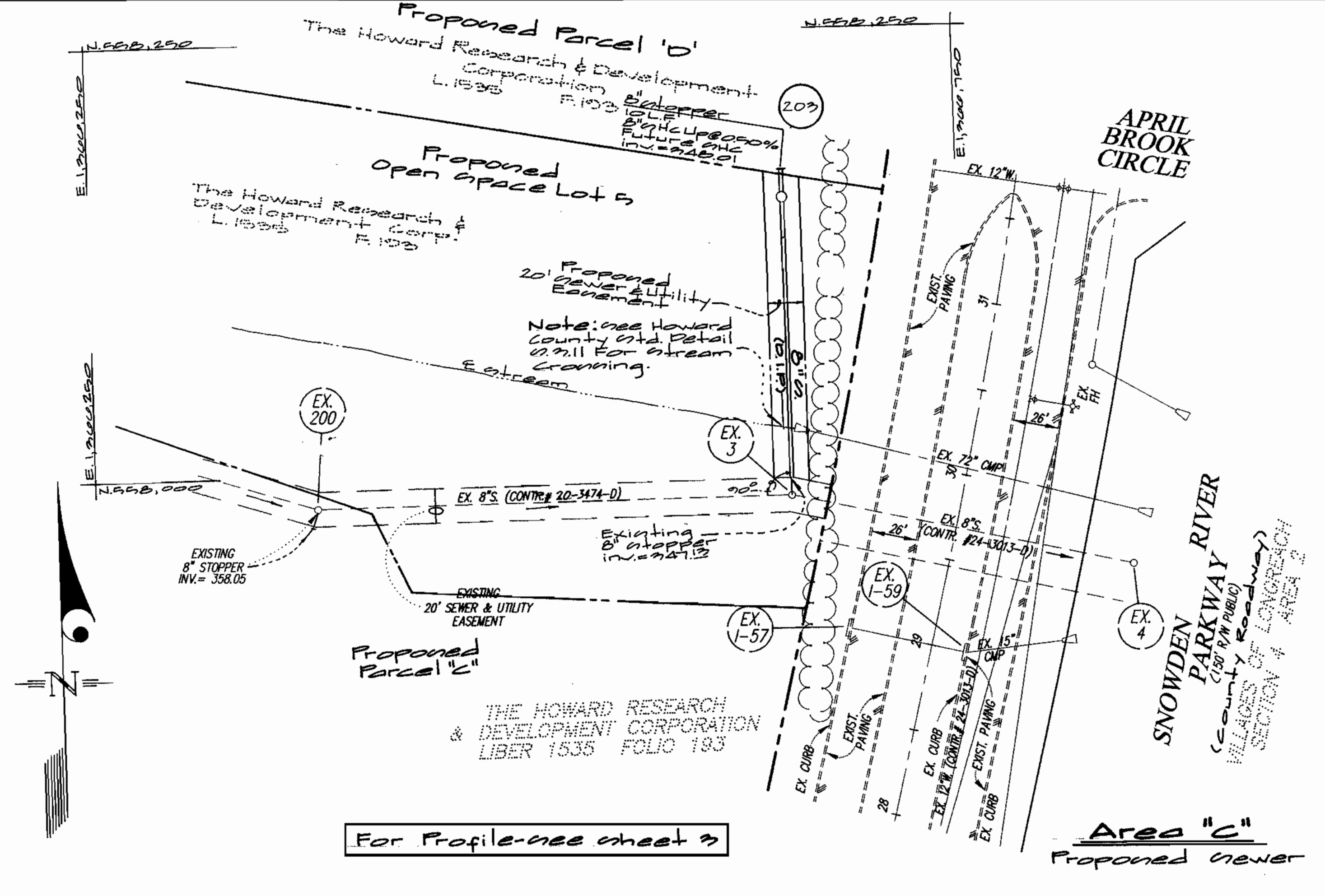
For Profile - see sheet 3

Legend
--- Silt Fence



Note: contractor to return Fire Hydrant to The Bureau of Utilities

For Profile - see sheet 3



For Profile - see sheet 3

DEPARTMENT OF PUBLIC WORKS
HOWARD COUNTY, MARYLAND
10-7-99
CHIEF, BUREAU OF UTILITIES

DEPARTMENT OF PLANNING AND ZONING
HOWARD COUNTY, MARYLAND
10/6/99
CHIEF, DEVELOPMENT ENGINEERING DIVISION

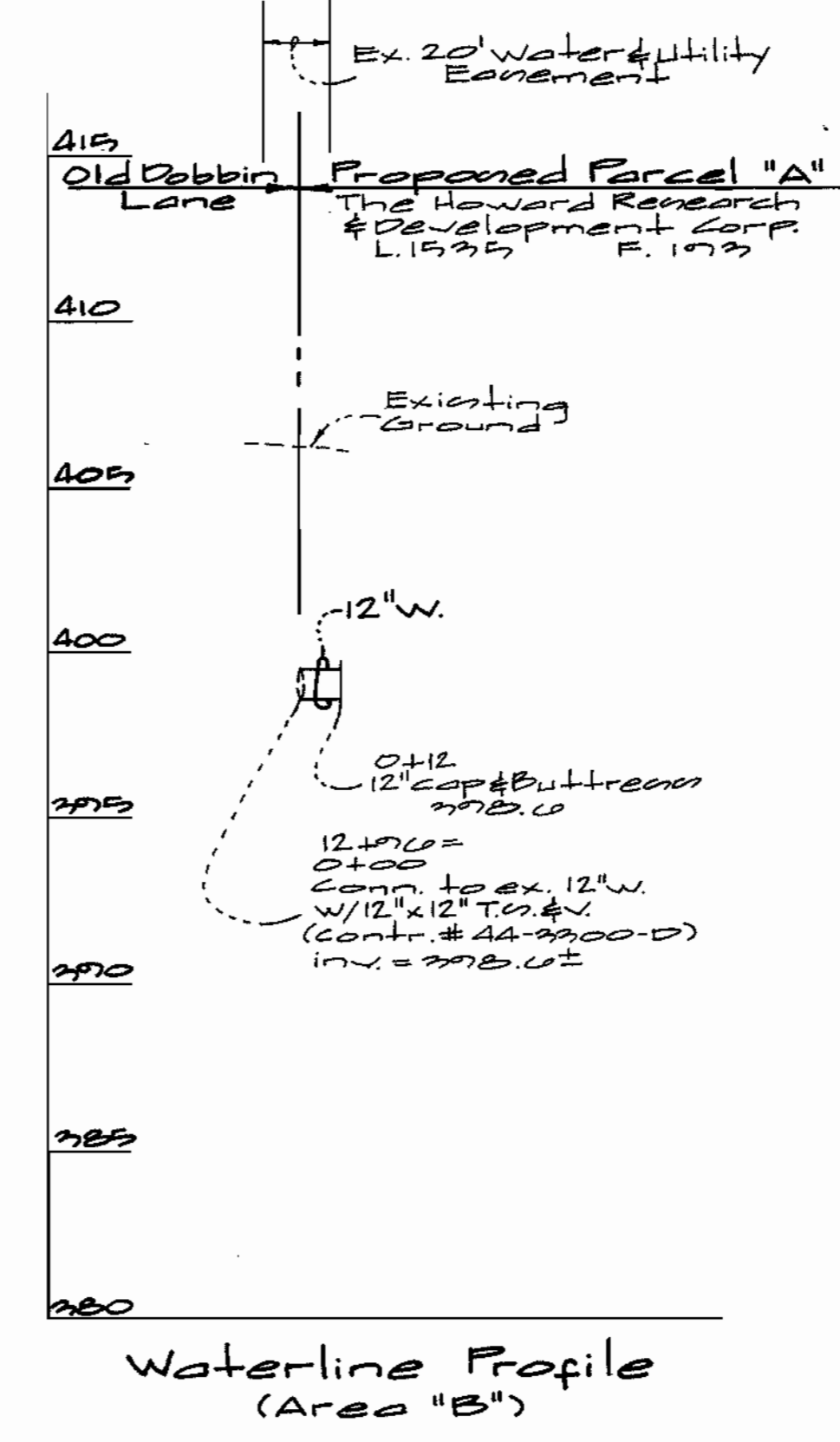
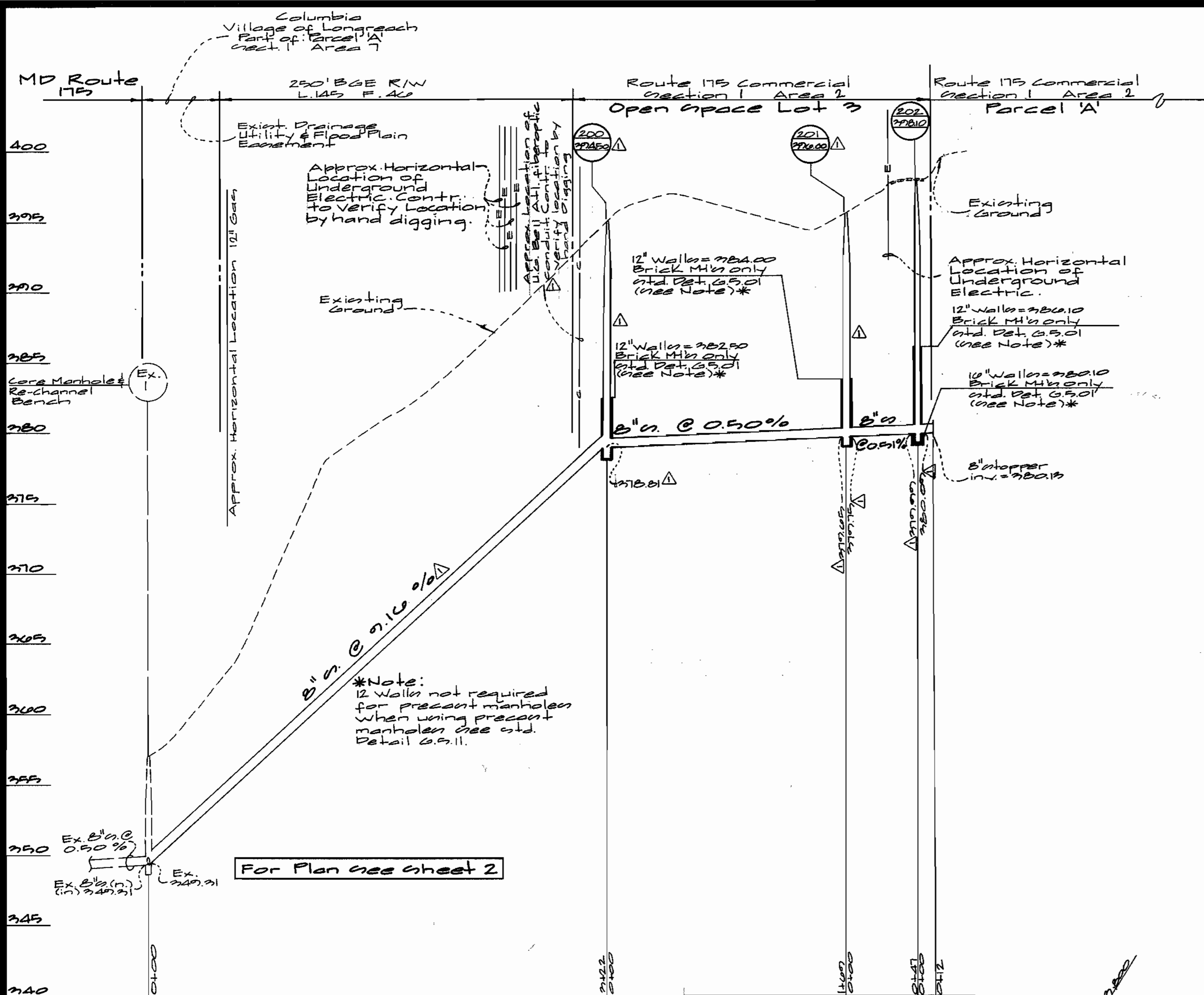
GLW GUTSCHICK LITTLE & WEBER, P.A.
CIVIL ENGINEERS, LAND SURVEYORS, LAND PLANNERS, LANDSCAPE ARCHITECTS
3909 NATIONAL DRIVE - SUITE 250 - BURTNSVILLE OFFICE PARK
BURTNSVILLE, MARYLAND 20866
TEL: 301-421-4024 BAL: 410-880-1820 DC/VA: 301-980-2524 FAX: 301-421-4188



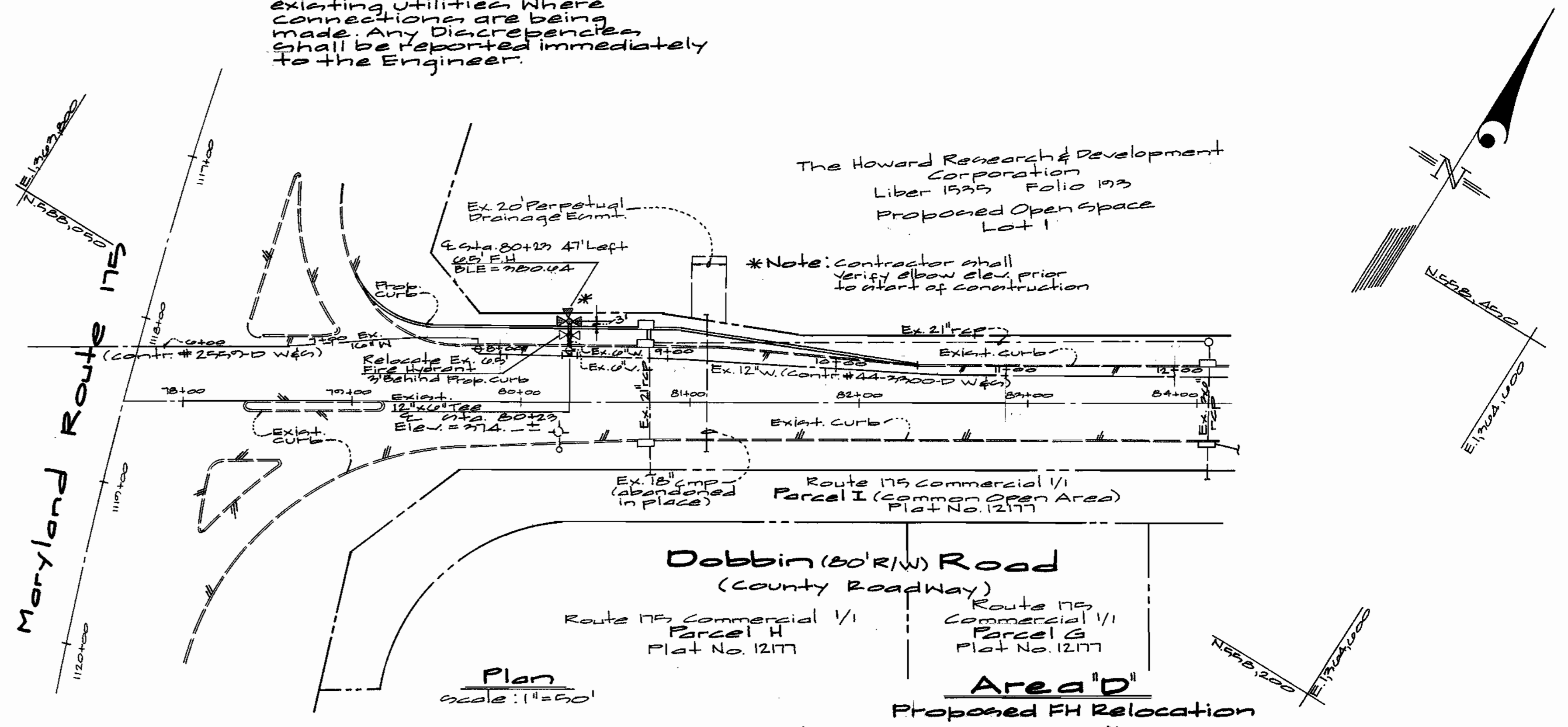
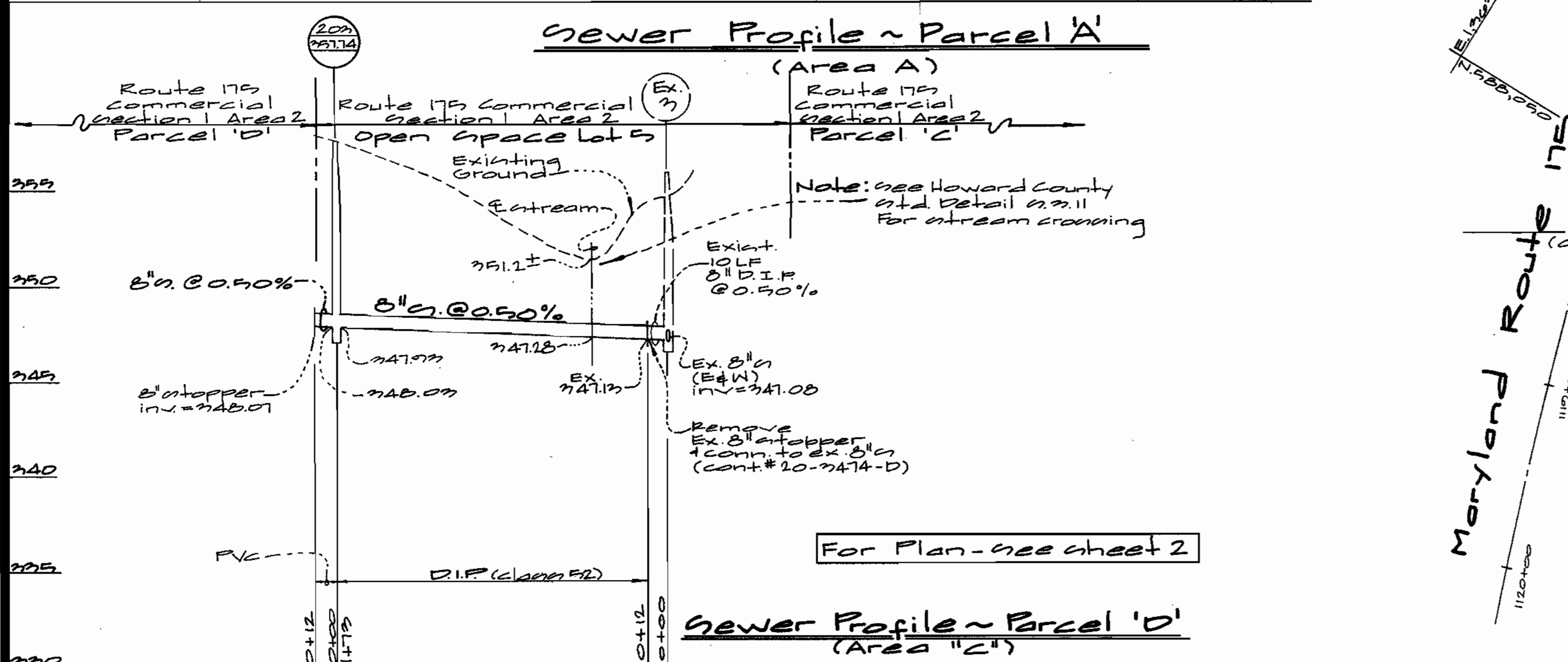
DES: wsl					
DRN: wsl					
CHK: rot					
DATE: 10/7/99	BY: NO	REV: alignment 200 to 201	DATE: 2.18.00		

Water & Sewer Plan
Scale: 1"=50'
600' SCALE MAP NO. 32 BLOCK NO. 1341B

Route 179 Commercial Section 1 Area 2
Parcels A thru D and Open Space Lots 1 thru 5
Election Dist. No. 6 Howard County, Maryland
Contract No. 24-3713-D
SCALE AS SHOWN
SHEET 2 OF 2



Contractor's Note
 Contractor shall verify invert elevations at all existing utilities where connections are being made. Any discrepancies shall be reported immediately to the Engineer.



DEPARTMENT OF PUBLIC WORKS
 HOWARD COUNTY, MARYLAND
 Chief, Bureau of Utilities
 10-7-99

DEPARTMENT OF PLANNING AND ZONING
 HOWARD COUNTY, MARYLAND
 Chief, Development Engineering Division
 10/10/99

GLW GUTSCHICK LITTLE & WEBER, P.A.
 CIVIL ENGINEERS, LAND SURVEYORS, LAND PLANNERS, LANDSCAPE ARCHITECTS
 3909 NATIONAL DRIVE - SUITE 250 - BURTONSVILLE OFFICE PARK
 BURTONSVILLE, MARYLAND 20866
 TEL: 301-421-4024 BAL: 410-880-1820 DC/VA: 301-989-2524 FAX: 301-421-4186



DES: Wsj			
DRN: Wsj			
CHK: not			
DATE: 10/10/99	BY: Wsj	NO: 1	REV: Profile Ex. 1 to 202

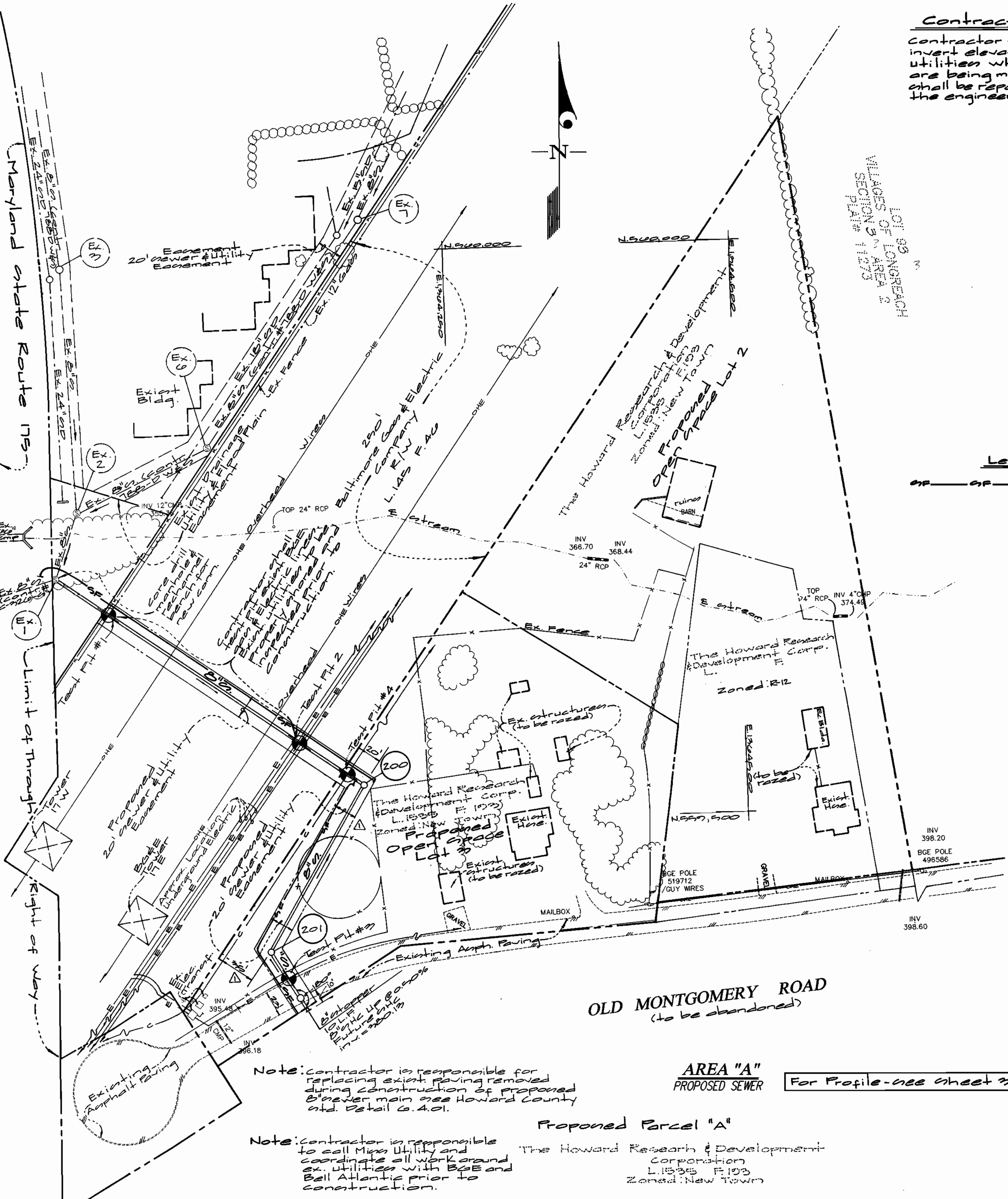
Water Plan
 scale: 1"=50'
 Water & Sewer Profiles
 scale:
 Horizontal: 1"=50'
 Vertical: 1"=5'

Route 175 Commercial Section 1 Area 2
 Parcel A thru D and Open Space Lots 1 thru 5
 Election Dist. No. 6 Howard County, Maryland
 Contract No. 24-3773-D

SCALE AS SHOWN
 SHEET 3 OF 3

Contractor's Note

Contractor to verify invert elevations at all existing utilities where connections are being made. Any discrepancies shall be reported immediately to the engineer.



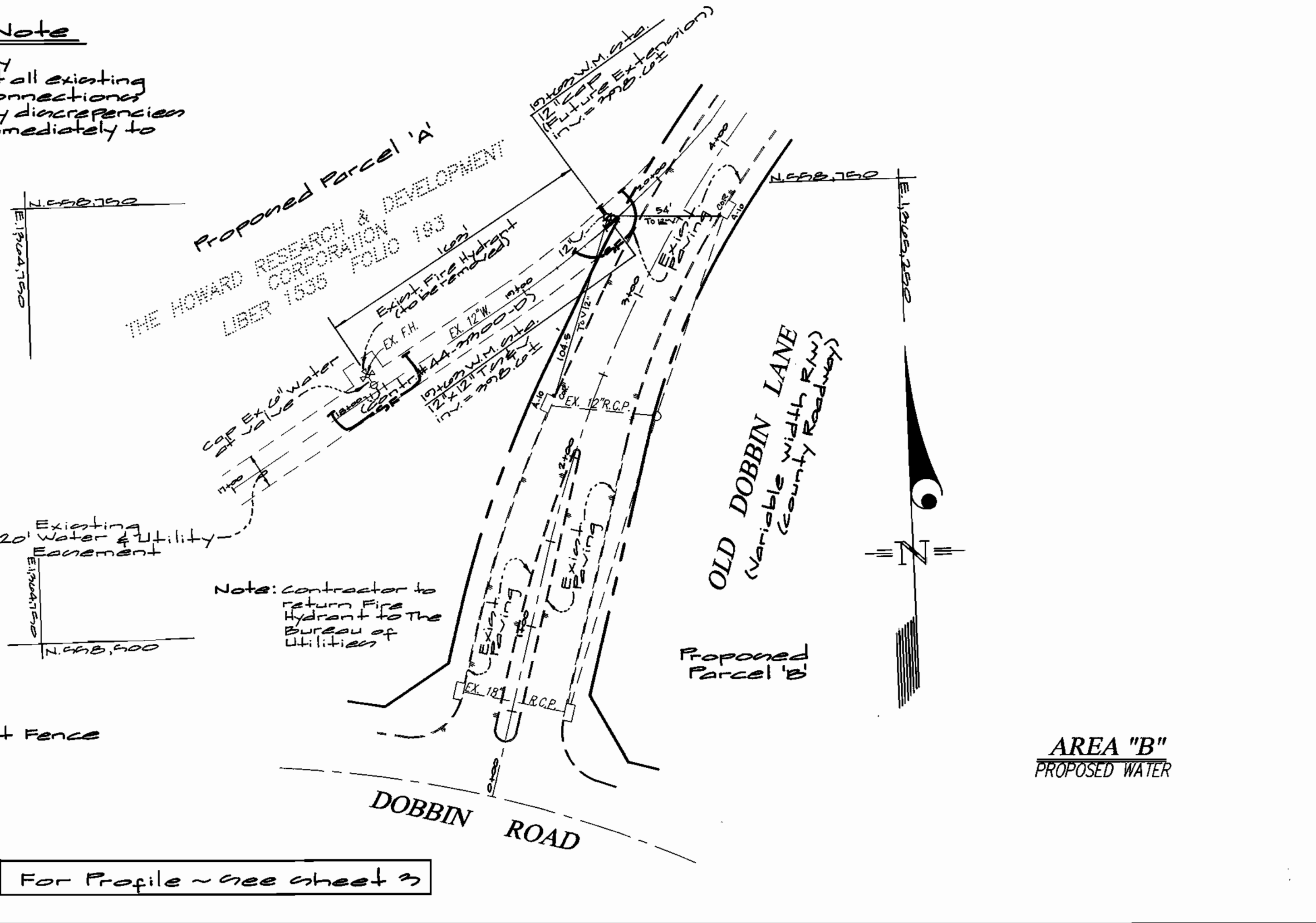
Note: contractor is responsible for replacing exist paving removed during construction of proposed sewer main see Howard County std. detail G.4.01.

Note: contractor is responsible to call Miss Utility and coordinate all work around ex utilities with BGE and Bell Atlantic prior to construction.

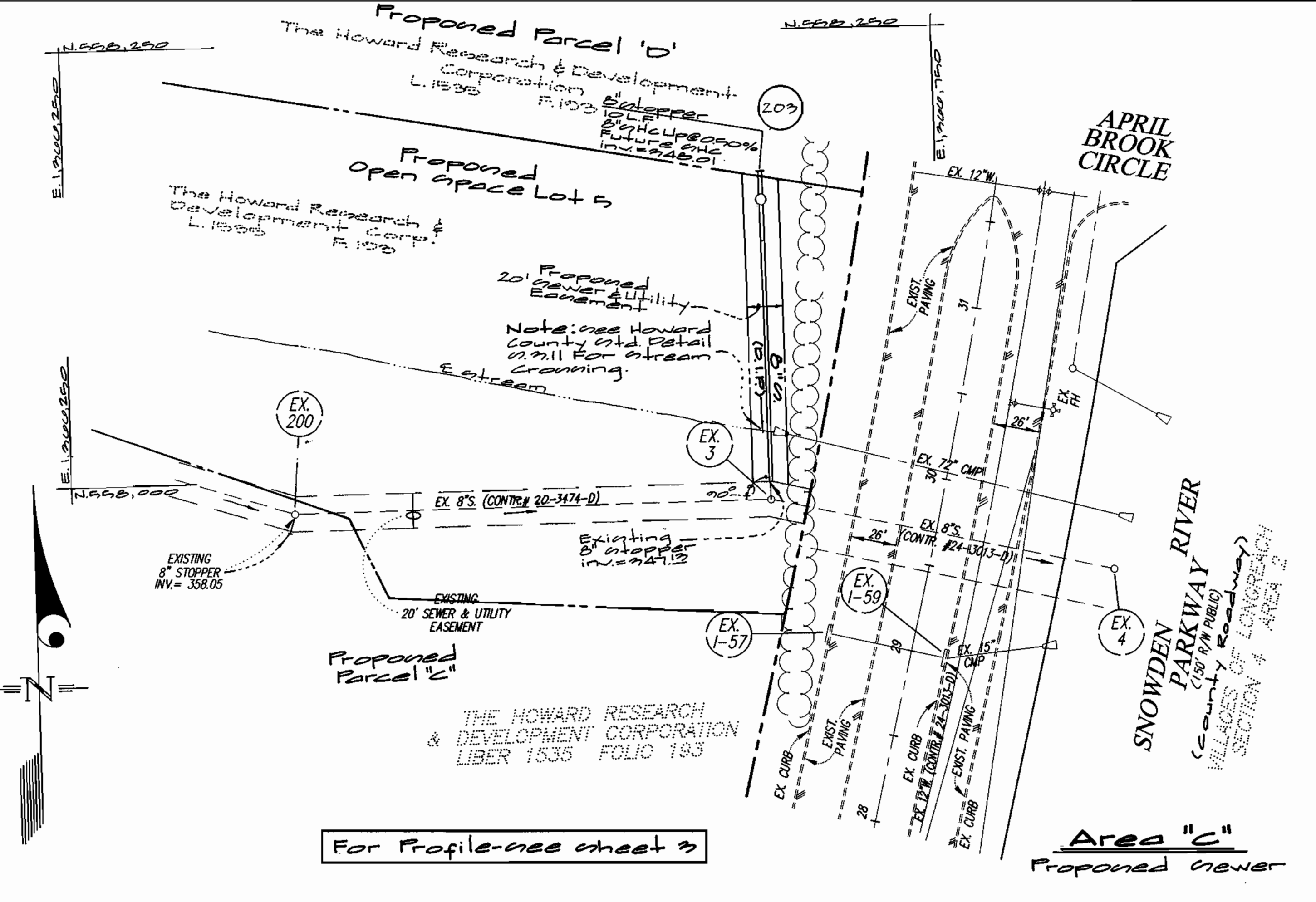
AREA "A"

PROPOSED SEWER

For Profile - see sheet 2



For Profile - see sheet 2



For Profile - see sheet 2

Area "C"

Proposed Sewer

DEPARTMENT OF PUBLIC WORKS
HOWARD COUNTY, MARYLAND
Robert W. Bennett 10-7-99
CHIEF, BUREAU OF UTILITIES DATE

DEPARTMENT OF PLANNING AND ZONING
HOWARD COUNTY, MARYLAND
10/10/99
CHIEF, DEVELOPMENT ENGINEERING DIVISION DATE

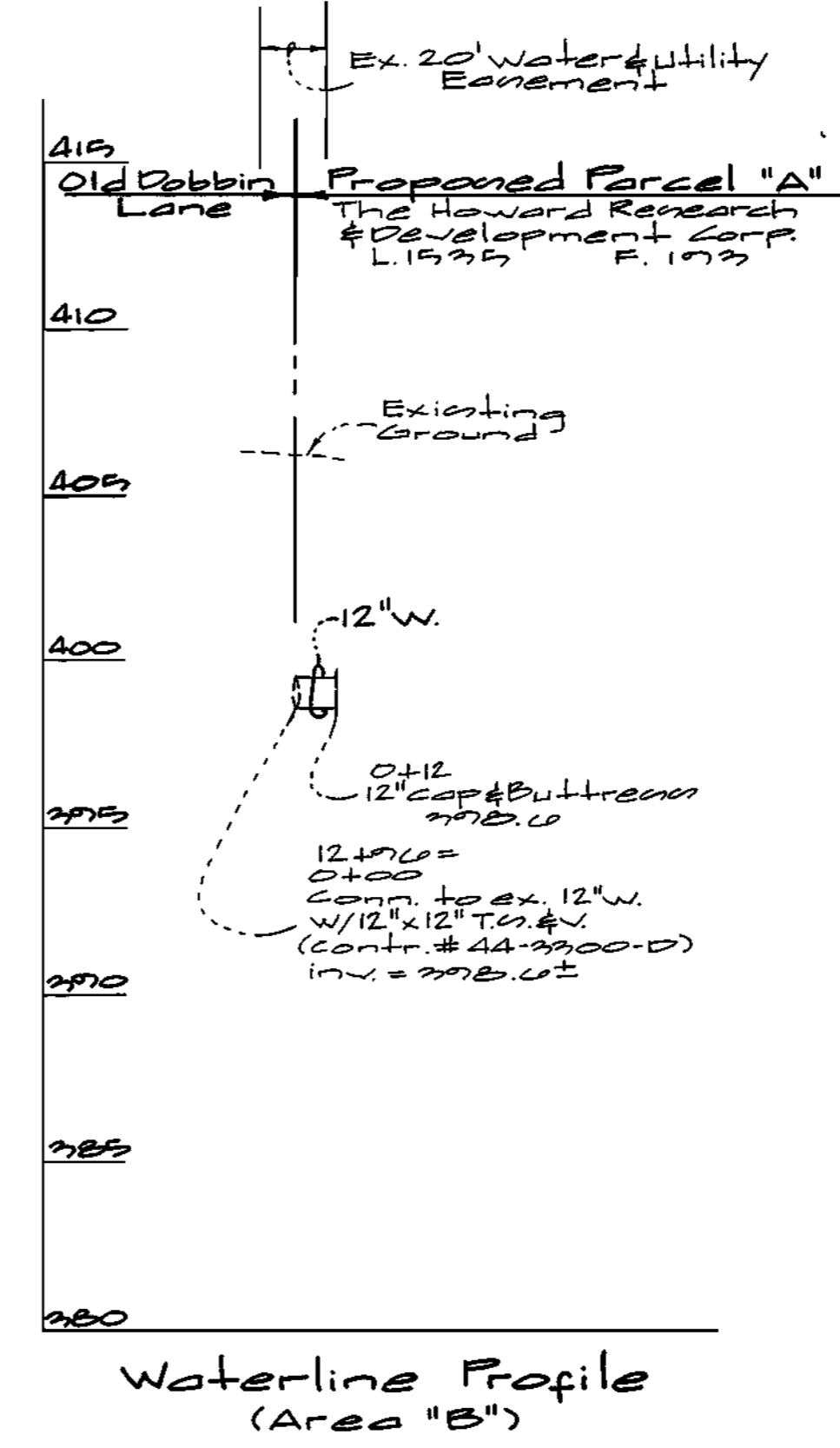
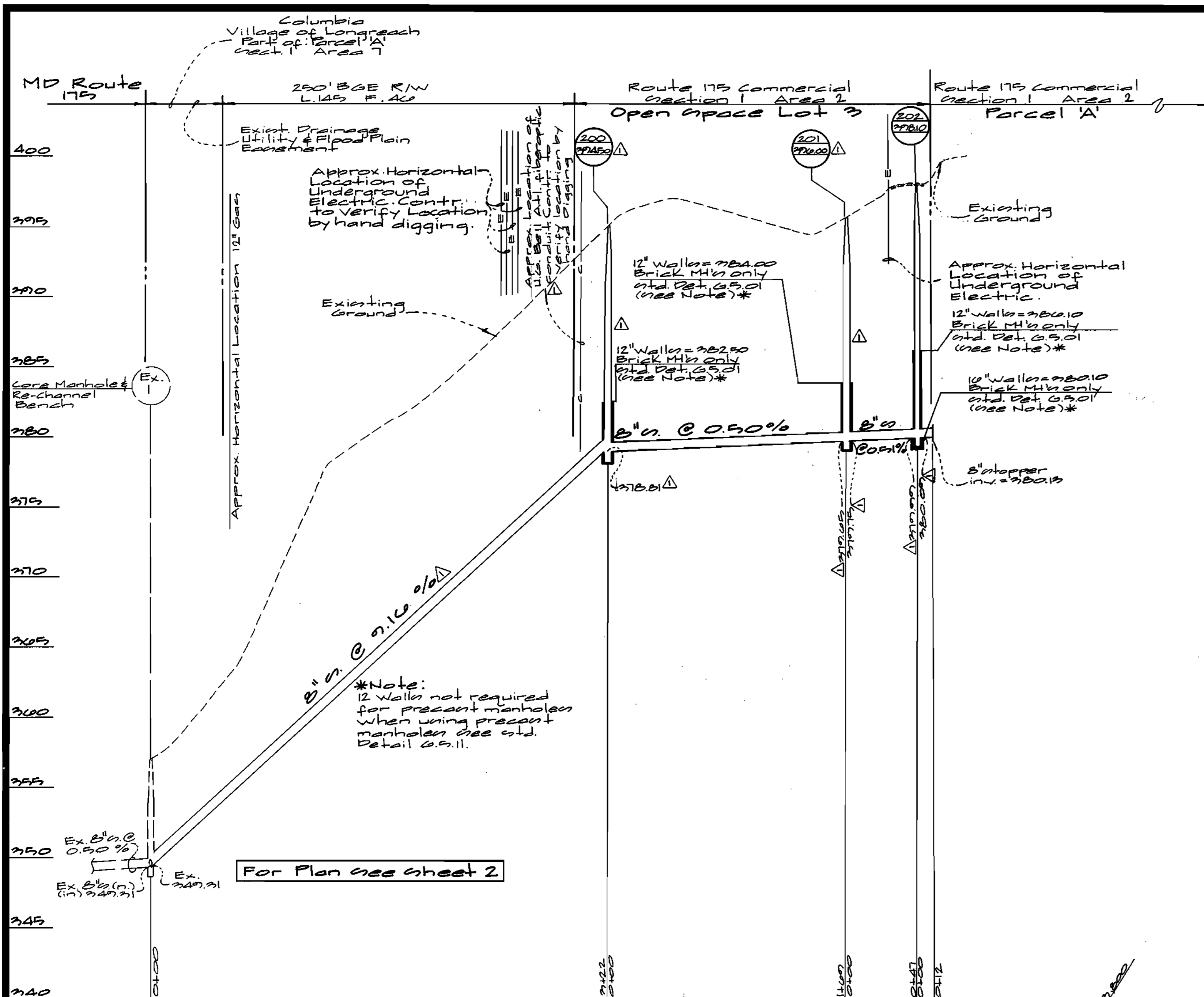
GLW GUTSCHICK LITTLE & WEBER, P.A.
CIVIL ENGINEERS, LAND SURVEYORS, LAND PLANNERS, LANDSCAPE ARCHITECTS
3909 NATIONAL DRIVE - SUITE 220 - BURTNSVILLE OFFICE PARK
BURTNSVILLE, MARYLAND 20866
TEL: 301-421-4024 BAL: 410-880-1820 DC/VA: 301-989-2524 FAX: 301-421-4186



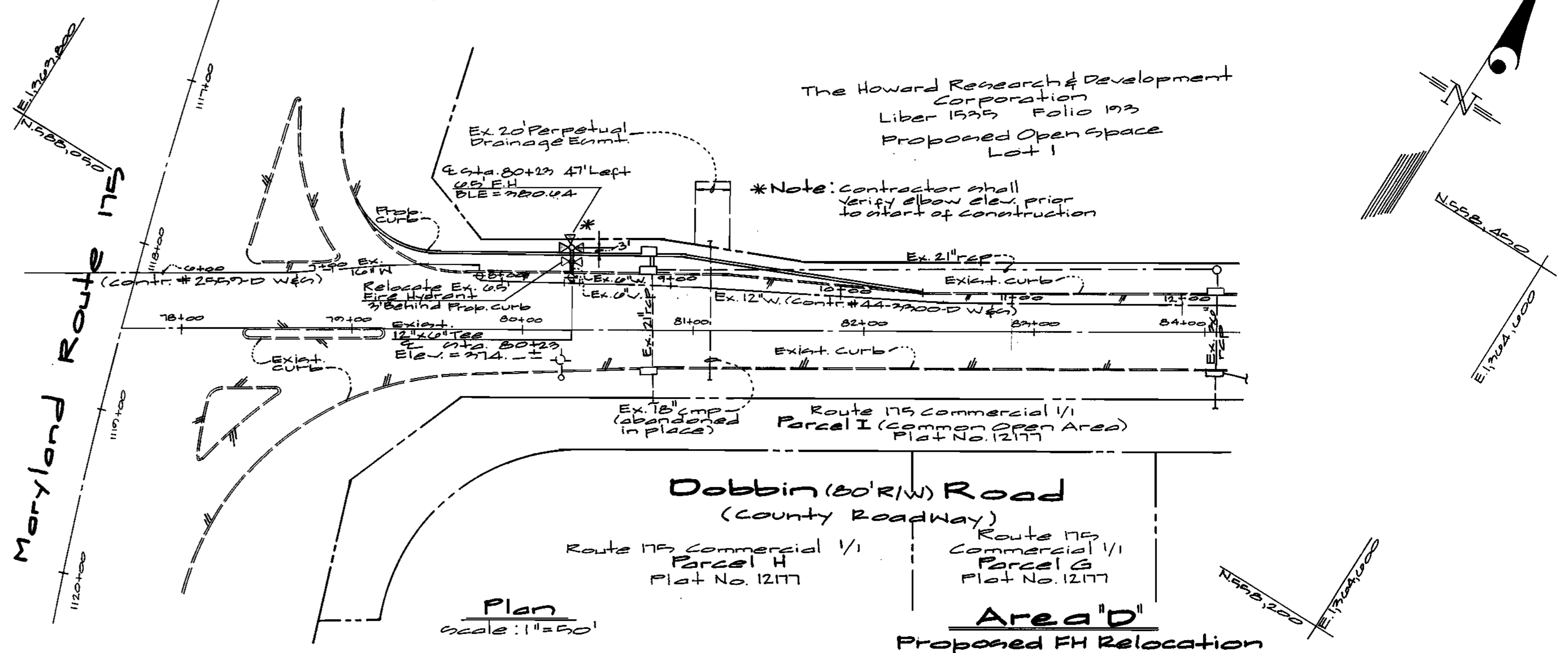
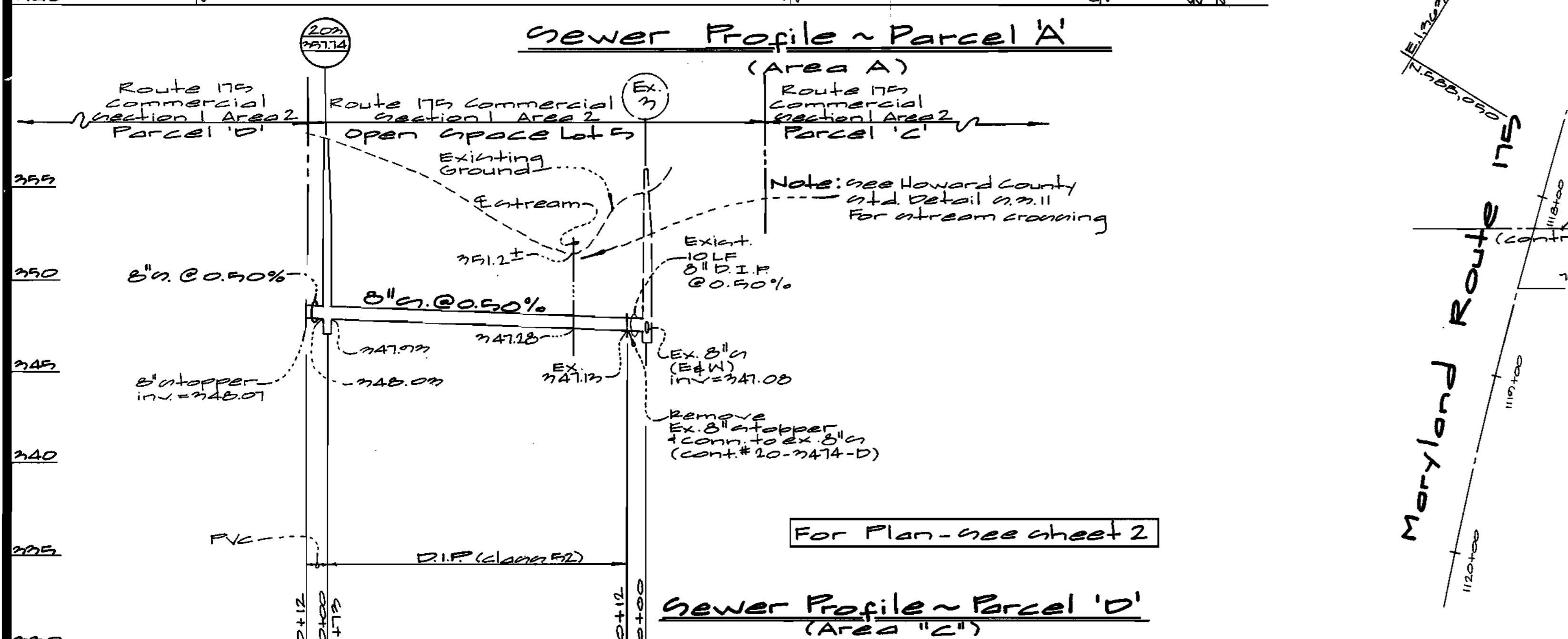
DES: was	1				
DRN: was	2				
CHK: rjt	K.C.I.	2	ASBUIC CONDITIONS ADDED TO PLAN	10/18/00	
DATE: 10/17/99	WAS	Δ	REV. ALIGNMENT 200 TO 201	2/18/00	
	BY	NO	REVISION	DATE	

Water & Sewer Plan
Scale: 1"=50'
600' SCALE MAP NO. 321 BLOCK NO. 13715

Route 175 Commercial Area 2
Parcels A thru D and Open Space Lots 1 thru 5
Election Dist. No. 6 Howard County, Maryland
Contract No. 24-3773-D
SCALE AS SHOWN
SHEET 2 OF 2



Contractor's Note
 Contractor shall verify invert elevations at all existing utilities. Where connections are being made. Any discrepancies shall be reported immediately to the Engineer.



DEPARTMENT OF PUBLIC WORKS
 HOWARD COUNTY, MARYLAND
 Robert R. Reinger, 10-7-99
 CHIEF, BUREAU OF UTILITIES

DEPARTMENT OF PLANNING AND ZONING
 HOWARD COUNTY, MARYLAND
 [Signature], 10/18/99
 CHIEF, DEVELOPMENT ENGINEERING DIVISION

GLW GUTSCHICK LITTLE & WEBER, P.A.
 CIVIL ENGINEERS, LAND SURVEYORS, LAND PLANNERS, LANDSCAPE ARCHITECTS
 3929 NATIONAL DRIVE - SUITE 250 - BURTONSVILLE OFFICE PARK
 BURTONSVILLE, MARYLAND 20886
 TEL: 301-421-4024 BAL: 410-880-1820 DC/VA: 301-989-2524 FAX: 301-421-4186



DES: WJR					
DRN: WJR					
CHK: RRT					
DATE: 10/18/99	BY: WJR	NO: 202	REVISION: Ex. Profile Ex. 1 to 202	DATE: 2-18-00	

Water Plan
 Scale: 1" = 50'
 Water & Newer Profiles
 Scale:
 Horizontal: 1" = 50'
 Vertical: 1" = 5'

Route 175 Commercial Section 1 Area 2
 Parcel A thru D and Open Space Lots 1 thru 5
 Election Dist. No. 02 Howard County, Maryland
 Contract No. 24-373-D
 SCALE AS SHOWN
 SHEET 22 OF 22