


**GENERAL NOTES**

- APPROXIMATE LOCATION OF EXISTING MAINS ARE SHOWN. THE CONTRACTOR SHALL TAKE ALL NECESSARY PRECAUTIONS TO PROTECT EXISTING MAINS AND SERVICES AND MAINTAIN UNINTERRUPTED SUPPLY. ANY DAMAGE INCURRED SHALL BE REPAIRED IMMEDIATELY TO THE SATISFACTION OF THE ENGINEER AT THE CONTRACTOR'S EXPENSE.
- ALL HORIZONTAL CONTROLS ARE BASED ON MARYLAND STATE COORDINATES. (NAD '83)
- ALL VERTICAL CONTROLS ARE BASED ON U.S.G.S. DATA.
- ALL PIPE ELEVATIONS SHOWN ARE INVERT ELEVATIONS.
- CLEAR ALL UTILITIES BY A MINIMUM OF 1', UNLESS OTHERWISE NOTED.
- FOR DETAILS NOT SHOWN ON THE DRAWINGS, AND FOR MATERIALS AND CONSTRUCTION METHODS, USE HOWARD COUNTY DESIGN MANUAL VOLUME IV, STANDARD SPECIFICATIONS AND DETAILS FOR CONSTRUCTION (LATEST EDITION). THE CONTRACTOR SHALL HAVE A COPY OF VOLUME IV ON THE JOB.
- WHERE TEST PITS HAVE BEEN MADE ON EXISTING UTILITIES, THEY ARE NOTED BY THE SYMBOL  AT THE LOCATION OF THE TEST PIT. A NOTE OR NOTES CONTAINING THE RESULTS OF THE TEST PIT OR PITS IS INCLUDED ON THE DRAWINGS. EXISTING UTILITIES IN THE VICINITY OF THE PROPOSED WORK FOR WHICH TEST PITS HAVE NOT BEEN DUG SHALL BE VERIFIED BY THE CONTRACTOR TO HIS OWN SATISFACTION. ANY DAMAGE TO EXISTING FACILITIES DUE TO THE CONTRACTOR'S NEGLIGENCE SHALL BE REPAIRED AT THE CONTRACTOR'S EXPENSE.
- CONTRACTOR SHALL NOTIFY THE FOLLOWING UTILITIES OR AGENCIES AT LEAST FIVE WORKING DAYS BEFORE STARTING WORK SHOWN ON THESE PLANS:
  - AT & T - (410) 865-3803
  - STATE HIGHWAY ADMINISTRATION - (410) 531-5533
  - BALTIMORE GAS & ELECTRIC CO. - CONTRACTOR SERVICES - (410) 850-4620
  - BALTIMORE GAS & ELECTRIC CO. UNDERGROUND DAMAGE CONTROL - (410) 787-9068
  - MISS UTILITY - 1-800-257-7777
  - CHESAPEAKE AND POTOMAC TELEPHONE CO. (410) 597-8585
  - COLONIAL PIPELINE CO. - (410) 795-1390
  - BUREAU OF UTILITIES, HOWARD COUNTY DEPARTMENT OF PUBLIC WORKS - (410) 313-4900
- TREES AND SHRUBS ARE TO BE PROTECTED FROM DAMAGE TO MAXIMUM EXTENT. TREES AND SHRUBS LOCATED WITHIN THE CONSTRUCTION STRIP ARE NOT TO BE REMOVED OR DAMAGED BY THE CONTRACTOR.
- CONTRACTOR SHALL REMOVE TREES, STUMPS AND ROOTS ALONG LINE OF EXCAVATION. PAYMENT FOR SUCH REMOVAL SHALL BE INCLUDED IN THE UNIT PRICE BID FOR CONSTRUCTION OF THE MAIN.
- THE CONTRACTOR SHALL NOTIFY THE BUREAU OF HIGHWAYS, HOWARD COUNTY, AT 410-313-2450 AT LEAST FIVE (5) WORKING DAYS BEFORE ANY OPEN CUT OF ANY COUNTY ROAD OR BORING/JACKING OPERATION IN COUNTY ROADS FOR LAYING WATER/SEWER MAINS OR HOUSE CONNECTIONS. THE APPROVAL OF THESE DRAWINGS WILL CONSTITUTE COMPLIANCE WITH DPW REQUIREMENTS PER SECTION 18.14(a) OF THE HOWARD COUNTY CODE.

**PART II - WATER**

- ALL WATER MAINS TO BE D.I.P. CLASS 52 UNLESS OTHERWISE NOTED.
- TOPS OF ALL WATER MAINS TO HAVE A MINIMUM OF 3-1/2" COVER UNLESS OTHERWISE NOTED.
- VALVES ADJACENT TO TEES SHALL BE STRAPPED TO TEES.
- ALL FITTINGS SHALL BE BUTTRESSED OR ANCHORED WITH CONCRETE IN ACCORDANCE WITH THE STANDARD DETAILS UNLESS OTHERWISE PROVIDED FOR ON THE DRAWINGS.
- FIRE HYDRANTS SHALL BE SET TO THE BURY LINE ELEVATIONS SHOWN ON THE DRAWINGS. ALL FIRE HYDRANTS SHALL BE RESTRAINED AND BUTTRESSED WITH CONCRETE IN ACCORDANCE WITH STANDARD DETAILS. SOIL AROUND THE FIRE HYDRANT SHALL BE COMPACTED IN ACCORDANCE WITH SECTIONS 1000 AND 1005 OF THE STANDARD SPECIFICATIONS.
- THE CONTRACTOR SHALL NOT OPERATE ANY WATER MAIN VALVES ON THE EXISTING WATER SYSTEM.
- ALL WATER HOUSE CONNECTIONS SHALL BE FOR INSIDE METER SETTING, UNLESS OTHERWISE NOTED ON THE PLANS OR IN THE SPECIFICATIONS.
- ALL D.I.P. FITTINGS SHALL BE IN ACCORDANCE WITH A.W.W.A. SPECIFICATION C-153 DUCTILE IRON COMPACT FITTINGS, 3 INCH THROUGH 12 INCH FOR WATER AND OTHER LIQUIDS.
- ALL EXISTING VALVES TO BE CLOSED WHEN CONNECTION TO THE SYSTEM IS MADE.

**BENCHMARK**

**DESCRIPTION**

- NO. 2244002 - HOWARD COUNTY MONUMENT
- NO. 2243003 - HOWARD COUNTY MONUMENT

# Contract No. 44-3764-D

# COLUMBIA GATEWAY

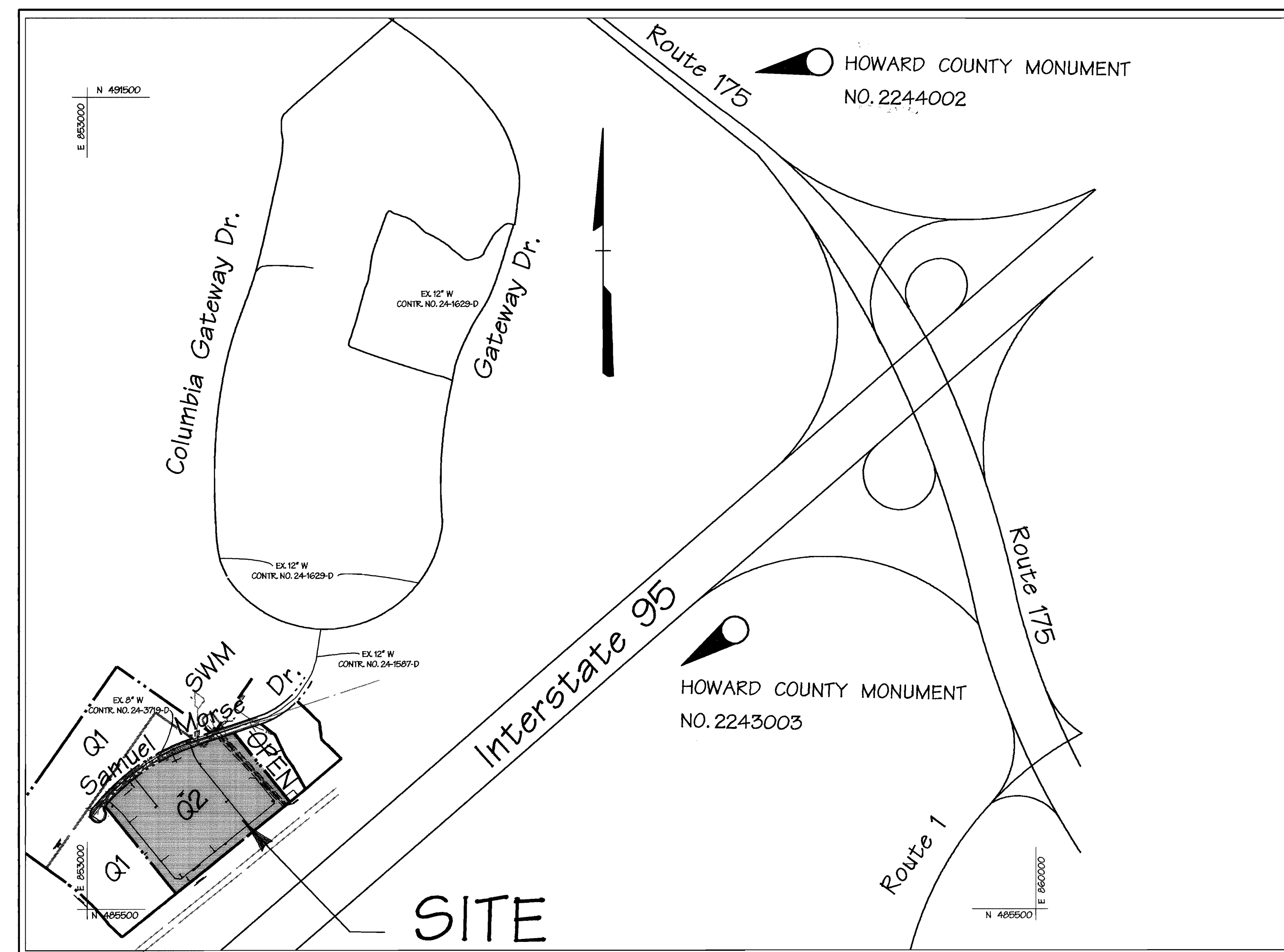
## PARCEL Q2

## WATER CONSTRUCTION PLANS

Howard County, Maryland Department of Public Works

QUANTITIES		AS-BUILT		
ITEMS	QUANTITIES ESTIMATED	QUANTITIES	TYPE	MANUFACTURER /SUPPLIER
8" W.	2,416 LF			
6" W.	383 LF			
8" 1/8 HB	4			
8" X 6" TEE	9			
8" VALVE	9			
6" VALVE	10			
8" CAP	1			
6" CAP	4			
6" X 6" TEE	1			
FIRE HYDRANT	7			

NAME OF UTILITY CONTRACTOR:  
SURVEY AND DRAFTING DIVISION AS-BUILT DATE:



**VICINITY MAP**  
SCALE: 1" = 600'  
CONTRACT NO. 44-3764-D

TYPE OF BUILDING: OFFICE & COMMERCIAL BUILDING  
NO. OF LOTS / PARCELS: 1  
NO. OF WATER HOUSE CONNECTIONS: 5  
NO. OF SEWER HOUSE CONNECTIONS: 0  
DRAINAGE AREA: DORSEY  
TREATMENT PLANT: LITTLE PATUXENT WATER RECLAMATION PLANT, SAVAGE, HOWARD COUNTY

WATER CODE: E06  
TEST GRADIENT: 700.751  
SEWER CODE: 4900000

SHEET INDEX	
SHEET No.	DESCRIPTION
1	TITLE SHEET
2	WATER PLAN
3	WATER PROFILE

REVIEWED FOR NATURAL RESOURCE CONSERVATION SERVICE AND MEETS TECHNICAL REQUIREMENT

*Cheryl Simmons* 6/23/99  
SIGNATURE DATE

THIS DEVELOPMENT PLAN IS APPROVED FOR SOIL EROSION AND SEDIMENT CONTROL BY THE HOWARD COUNTY CONSERVATION DISTRICT.

APPROVED *John R. Robertson* 6/23/99  
HOWARD S.C.D. DATE

SEDIMENT CONTROL MEASURES WILL BE IMPLEMENTED IN ACCORDANCE WITH SECTION 219 OF THE SPECIFICATIONS AND SITE DEVELOPMENT PLAN SDP 99-99.

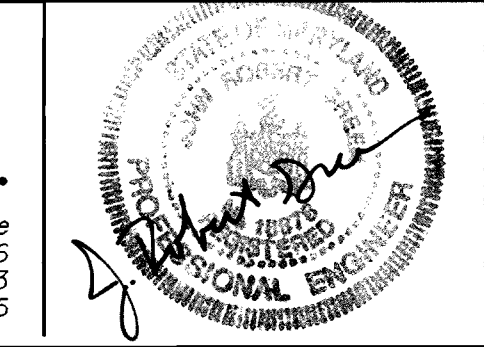
DEPARTMENT OF PUBLIC WORKS  
HOWARD COUNTY, MARYLAND

*Michael A. Duranillo* 6/23/99  
CHIEF - BUREAU OF UTILITIES - DATE

DEPARTMENT OF PLANNING & ZONING  
HOWARD COUNTY, MARYLAND

*[Signature]* *[Signature]*  
CHIEF - DEVELOPMENT ENGINEERING DIVISION - DATE

**DMW**  
Daft · McCune · Walker, Inc.  
A Team of Land Planners, Landscape Architects, Engineers, Surveyors & Environmental Professionals  
200 East Pennsylvania Avenue  
Towson, Maryland 21286  
410 296 3333  
Fax 296 4705



DESIGN BY:	CW			
DRAWN BY:	CW			
CHECKED BY:	[Signature]			
DATE:	6/14/99			
BY NO.		REVISION	DATE	

600 SCALE MAP NO. 42 & 43 BLOCK NO. 12 & 7

**Columbia Gateway**  
**Office & Commercial Buildings**  
Parcel Q2 - Columbia Gateway, 6th Election District, Howard County, Maryland

OWNER: THE HOWARD RESEARCH AND DEVELOPMENT CORPORATION  
10275 LITTLE PATUXENT PARKWAY  
COLUMBIA, MD 21044

DEVELOPER: AAK II, INC.  
8605 COLUMBIA 100 PKWY  
SUITE 101  
COLUMBIA, MD 21045

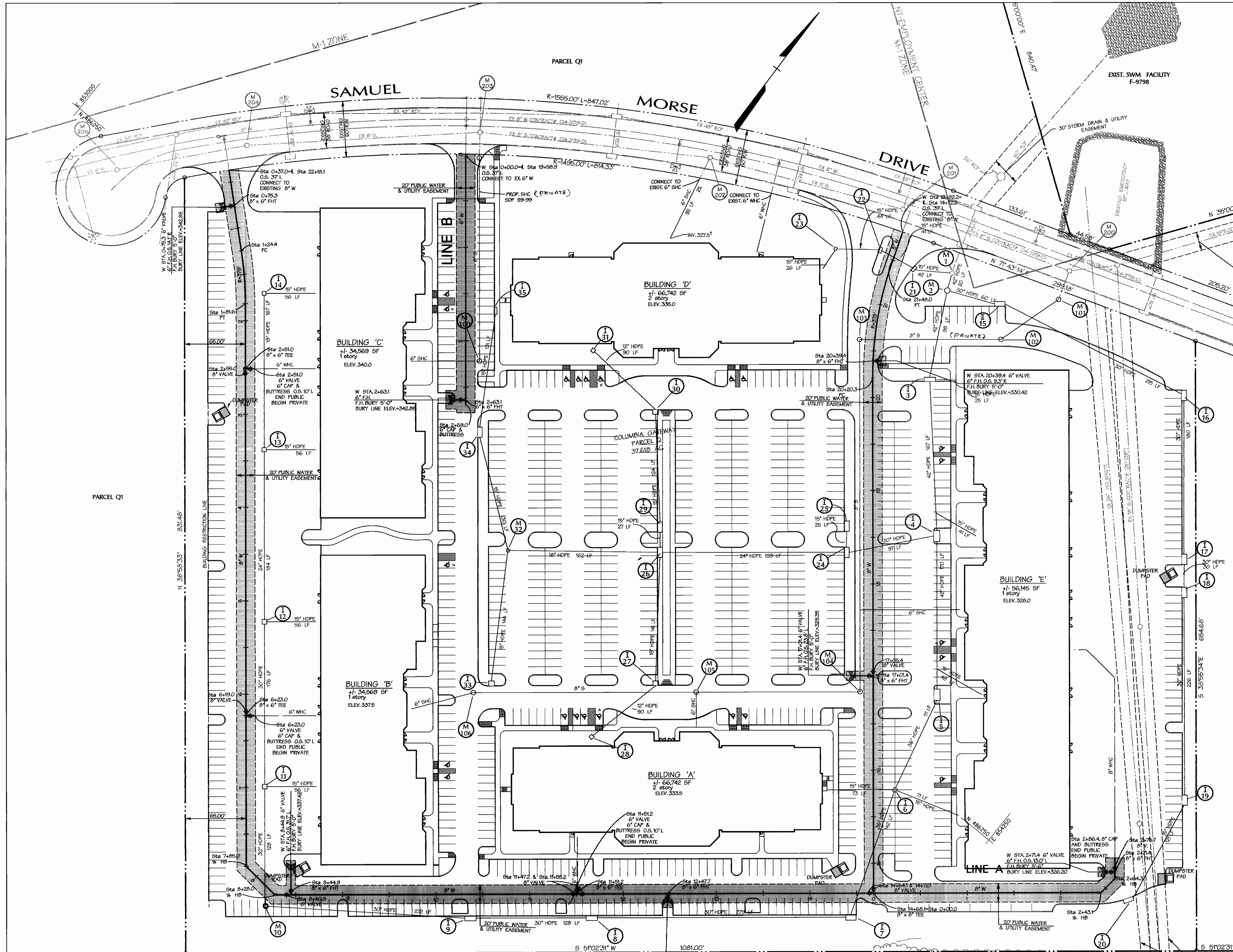
CONTRACT NO. 44-3764-D

AS SHOWN  
SHEET  
1 OF 3

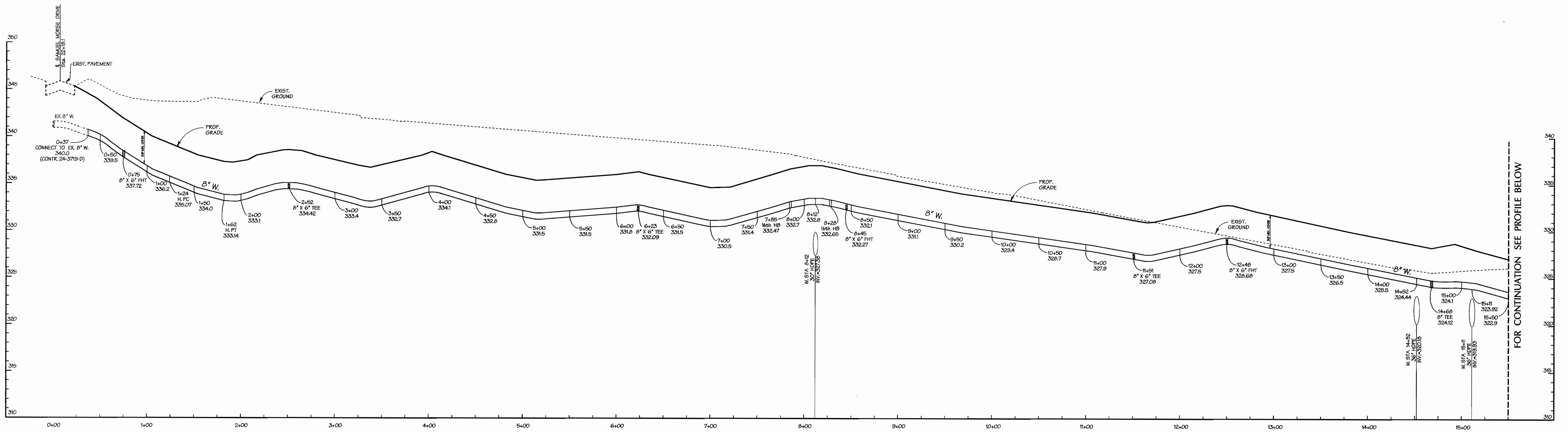
ITEMS	COORDINATES		STATION
	NORTH	EAST	
8" P. C.	486240.44	853230.53	W.L. STA. 1+24.4
8" P. T.	486198.89	853269.70	W.L. STA. 1+81.6
1/8 BEND	486256.43	85.648.97	W.L. STA. 7+85.0
1/8 BEND	486725.59	853691.98	W.L. STA. 8+28.0
8" X 8" TEE	486128.35	854189.78	W.L. STA. 14+28.1
8" P. C.	486558.32	853841.89	W.L. STA. 20+20.3
8" X 6" TEE (For Hydrant Connection)	486572.76	853830.77	W.L. STA. 20+39.4
8" P. T.	486668.15	853779.69	W.L. STA. 21+48.0
1/8 BEND (To Bldg. E)	486281.51	854378.54	W.L. STA. 2+43.1
1/8 BEND (To Bldg. E)	486302.34	854380.98	W.L. STA. 2+64.3
8" CAP & BUTTRESS (To Bldg. E)	486319.52	854367.08	W.L. STA. 2+86.0
EXIST. 6" CAP AT PROP. CONNECTION (Hyd.)	**	**	W.L. STA. 0+00.0
8" X 6" TEE	486266.50	853517.83	W.L. STA. 2+63.1

CONTRACTOR TO TEST PIT TO DETERMINE ACTUAL LOCATION AND ELEVATION OF EXISTING 8" W

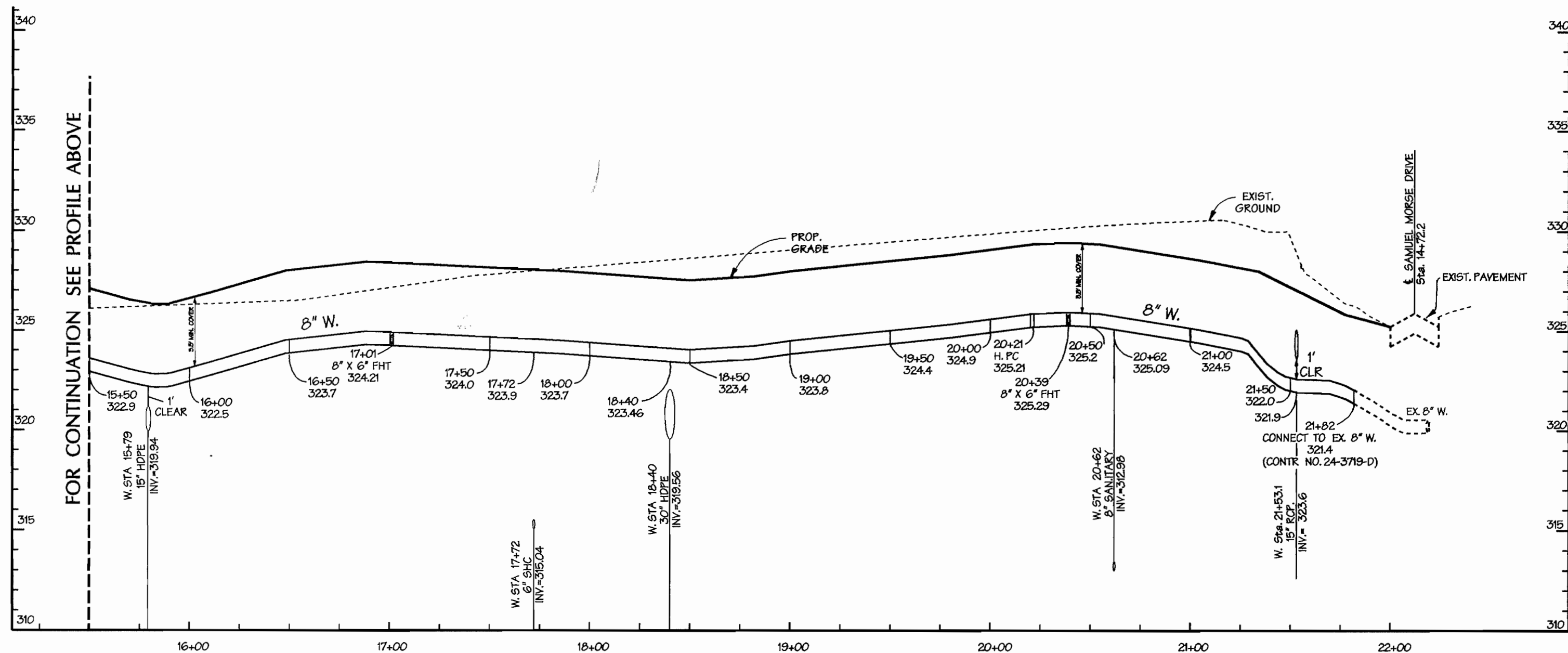
\*\* CONTRACTOR TO TEST PIT TO DETERMINE ACTUAL LOCATION AND ELEVATION OF EXISTING 6" CAP & BUTTRESS



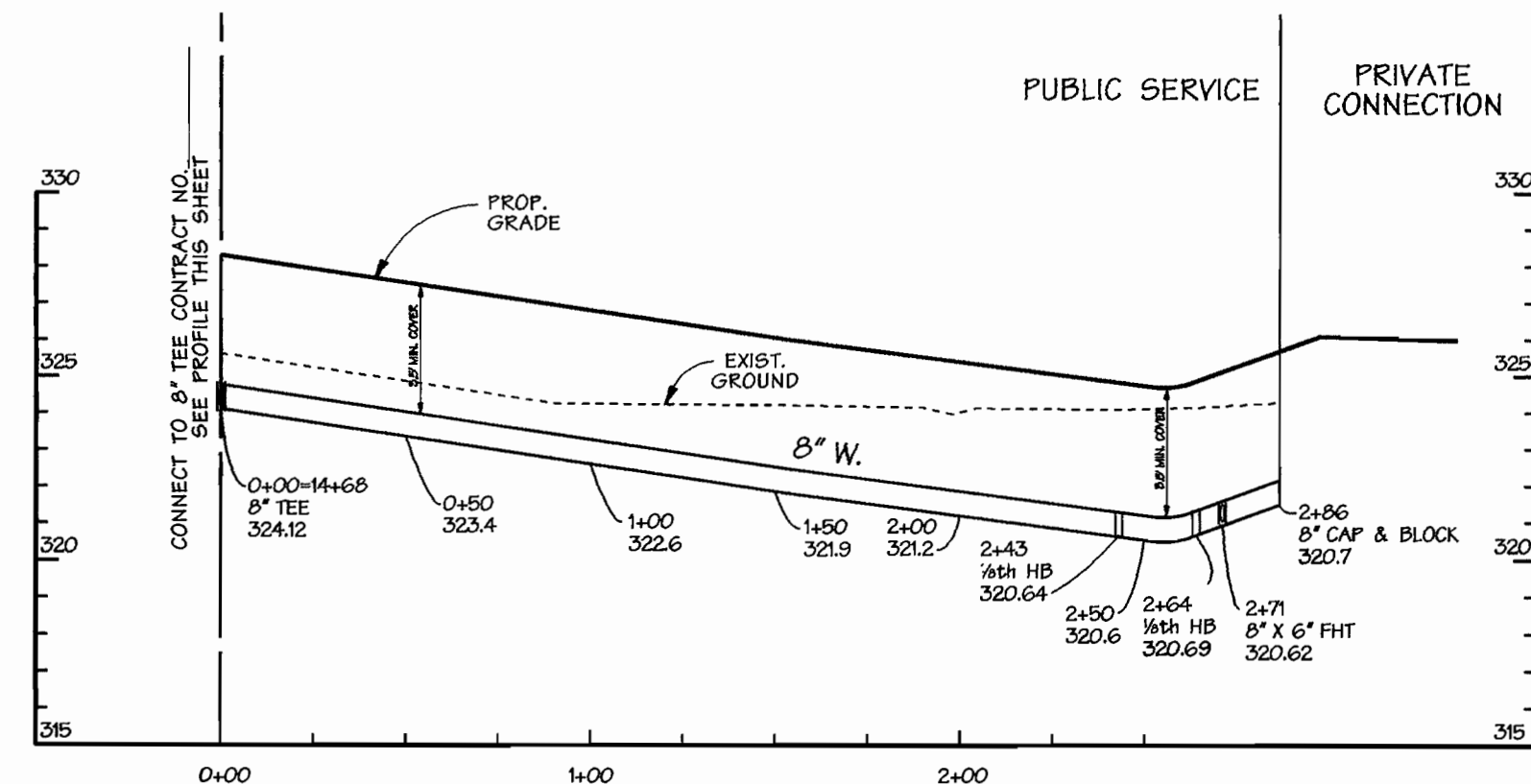
DEPARTMENT OF PUBLIC WORKS HOWARD COUNTY, MARYLAND Michael A. ... CHIEF - BUREAU OF UTILITIES - DATE		DEPARTMENT OF PLANNING & ZONING HOWARD COUNTY, MARYLAND ... CHIEF - DEVELOPMENT ENGINEERING DIVISION - DATE		<b>DMW</b> <b>Daft · McCune · Walker, Inc.</b> A Team of Land Planners, 200 East Pennsylvania Avenue Landscape Architects, Towson, Maryland 21286 Engineers, Surveyors & Environmental Professionals 410 296 3333 Fax 296 4705		DESIGN BY: CW DRAWN BY: CW CHECKED BY: ... DATE: 6/14/97		<b>WATER PLAN</b> 600 SCALE MAP NO. 42 & 43 BLOCK NO. 12 & 7		<b>Columbia Gateway</b> <b>Office &amp; Commercial Buildings</b> Parcel Q2 - Columbia Gateway, 6th Election District, Howard County Maryland OWNER: THE HOWARD RESEARCH AND DEVELOPMENT CORPORATION 10275 LITTLE PATUXENT PARKWAY COLUMBIA, MD 21044 DEVELOPER: AAK II, INC. 8805 COLUMBIA 100 PKWY SUITE 101 COLUMBIA, MD 21045 CONTRACT NO. 44-3764-D		1" = 50' SHEET 2 OF 3
---	--	--	--	--	--	---	--	---	--	---	--	-----------------------------



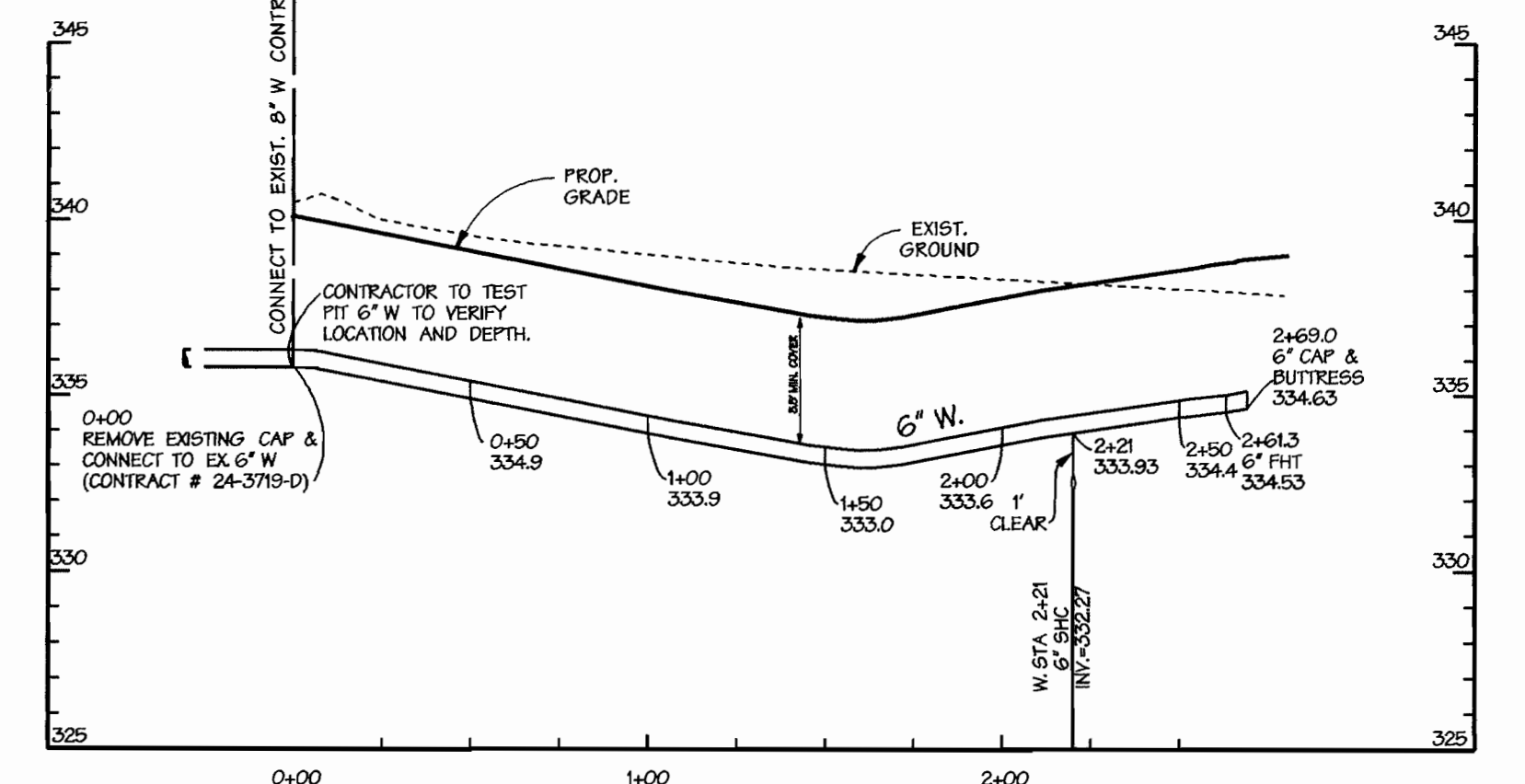
8" WATER SERVICE  
SCALE: HORIZ. 1"=50'  
VERT. 1"=5'



8" WATER SERVICE  
SCALE: HORIZ. 1"=50'  
VERT. 1"=5'



LINE A  
SCALE: HORIZ. 1"=50'  
VERT. 1"=5'



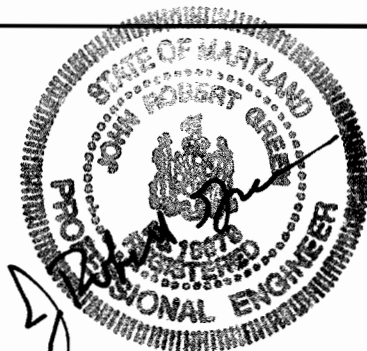
6" FIRE HYDRANT LEAD (LINE B)  
SCALE: HORIZ. 1"=50'  
VERT. 1"=5'

DEPARTMENT OF PUBLIC WORKS  
HOWARD COUNTY, MARYLAND

DEPARTMENT OF PLANNING & ZONING  
HOWARD COUNTY, MARYLAND

**DMW**  
Daft · McCune · Walker, Inc.

A Team of Land Planners, 200 East Pennsylvania Avenue  
Landscape Architects, Towson, Maryland 21286  
Engineers, Surveyors & Environmental Professionals 410 296 3333  
Fax 296 4705



DESIGN BY:	CW		
DRAWN BY:	CW		
CHECKED BY:	JES		
DATE:	6/14/99		
BY NO.		REVISION	DATE

WATER PROFILE

600 SCALE MAP NO. 42 & 43 BLOCK NO. 12 & 7

**Columbia Gateway**  
Office & Commercial Buildings

Parcel Q2 - Columbia Gateway, 6th Election District, Howard County Maryland  
OWNER: THE HOWARD RESEARCH AND DEVELOPMENT CORPORATION  
10276 LITTLE PATUXENT PARKWAY  
COLUMBIA, MD 21044  
DEVELOPER: AAK II, INC.  
8805 COLUMBIA 100 PKWY  
SUITE 101  
COLUMBIA, MD 21045

SCALE:  
AS SHOWN

SHEET  
3 OF 3

CONTRACT NO. 44-3764-D

**GENERAL NOTES**

- APPROXIMATE LOCATION OF EXISTING MAINS ARE SHOWN. THE CONTRACTOR SHALL TAKE ALL NECESSARY PRECAUTIONS TO PROTECT EXISTING MAINS AND SERVICES AND MAINTAIN UNINTERRUPTED SUPPLY. ANY DAMAGE INCURRED SHALL BE REPAIRED IMMEDIATELY TO THE SATISFACTION OF THE ENGINEER AT THE CONTRACTOR'S EXPENSE.
- ALL HORIZONTAL CONTROLS ARE BASED ON MARYLAND STATE COORDINATES. (NAD '83)
- ALL VERTICAL CONTROLS ARE BASED ON U.S.G.S. DATA.
- ALL PIPE ELEVATIONS SHOWN ARE INVERT ELEVATIONS.
- CLEAR ALL UTILITIES BY A MINIMUM OF 1', UNLESS OTHERWISE NOTED.
- FOR DETAILS NOT SHOWN ON THE DRAWINGS, AND FOR MATERIALS AND CONSTRUCTION METHODS, USE HOWARD COUNTY DESIGN MANUAL VOLUME IV, STANDARD SPECIFICATIONS AND DETAILS FOR CONSTRUCTION (LATEST EDITION). THE CONTRACTOR SHALL HAVE A COPY OF VOLUME IV ON THE JOB.
- WHERE TEST PITS HAVE BEEN MADE ON EXISTING UTILITIES, THEY ARE NOTED BY THE SYMBOL [Symbol] AT THE LOCATION OF THE TEST PIT. A NOTE OR NOTES CONTAINING THE RESULTS OF THE TEST PIT OR PITS IS INCLUDED ON THE DRAWINGS. EXISTING UTILITIES IN THE VICINITY OF THE PROPOSED WORK FOR WHICH TEST PITS HAVE NOT BEEN DUG SHALL BE VERIFIED BY THE CONTRACTOR TO HIS OWN SATISFACTION. ANY DAMAGE TO EXISTING FACILITIES DUE TO THE CONTRACTOR'S NEGLIGENCE SHALL BE REPAIRED AT THE CONTRACTOR'S EXPENSE.
- CONTRACTOR SHALL NOTIFY THE FOLLOWING UTILITIES OR AGENCIES AT LEAST FIVE WORKING DAYS BEFORE STARTING WORK SHOWN ON THESE PLANS:  
AT & T - (410) 865-3803  
STATE HIGHWAY ADMINISTRATION - (410) 531-5533  
BALTIMORE GAS & ELECTRIC CO. - CONTRACTOR SERVICES - (410) 850-4620  
BALTIMORE GAS & ELECTRIC CO. UNDERGROUND DAMAGE CONTROL - (410) 787-9068  
MISS UTILITY - 1-800 257-7777  
CHESAPEAKE AND POTOMAC TELEPHONE CO. (410) 597-8585  
COLONIAL PIPELINE CO. - (410) 795-1390  
BUREAU OF UTILITIES, HOWARD COUNTY DEPARTMENT OF PUBLIC WORKS - (410) 313-4900
- TREES AND SHRUBS ARE TO BE PROTECTED FROM DAMAGE TO MAXIMUM EXTENT. TREES AND SHRUBS LOCATED WITHIN THE CONSTRUCTION STRIP ARE NOT TO BE REMOVED OR DAMAGED BY THE CONTRACTOR.
- CONTRACTOR SHALL REMOVE TREES, STUMPS AND ROOTS ALONG LINE OF EXCAVATION. PAYMENT FOR SUCH REMOVAL SHALL BE INCLUDED IN THE UNIT PRICE BID FOR CONSTRUCTION OF THE MAIN.
- THE CONTRACTOR SHALL NOTIFY THE BUREAU OF HIGHWAYS, HOWARD COUNTY, AT 410-313-2450 AT LEAST FIVE (5) WORKING DAYS BEFORE ANY OPEN CUT OF ANY COUNTY ROAD OR BORING/JACKING OPERATION IN COUNTY ROADS FOR LAYING WATER/SEWER MAINS OR HOUSE CONNECTIONS. THE APPROVAL OF THESE DRAWINGS WILL CONSTITUTE COMPLIANCE WITH DPW REQUIREMENTS PER SECTION 18.141(a) OF THE HOWARD COUNTY CODE.

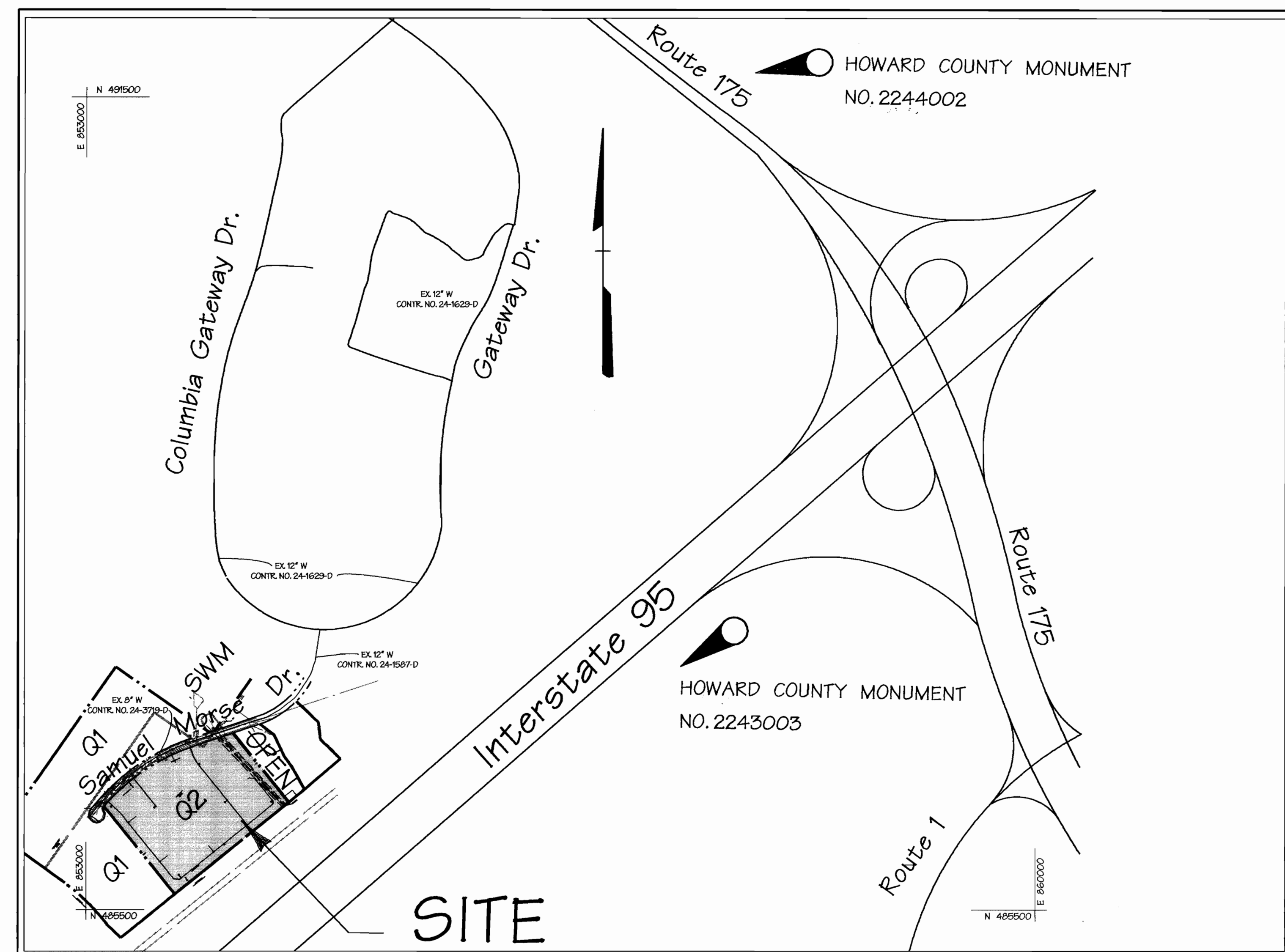
**Contract No. 44-3764-D**  
**COLUMBIA GATEWAY**  
**PARCEL Q2**

**WATER CONSTRUCTION PLANS**

Howard County, Maryland Department of Public Works

QUANTITIES				
ITEMS	QUANTITIES ESTIMATED	AS-BUILT		
		QUANTITIES	TYPE	MANUFACTURER / SUPPLIER
8" W.	2,416 LF	2,911 LF	CL 52 TYTON	U.S. PIPE & FOUNDRY / BELAIR RD SUPPLY
6" W.	383 LF	80	CL 52 TYTON	" " " " " "
8" 1/8 HB	4	8	M. J. COMPACT	" " " " " "
8" X 6" TEE	9	7	M. J. COMPACT	U.S. PIPE & FOUNDRY / BELAIR RD SUPPLY
8" VALVE	9	11	RESILIENT R.	MUELLER / BELAIR ROAD SUPPLY
6" VALVE	10	4	RESILIENT R.	" " " " " "
8" CAP	1	1	SOLID IRON	U.S. & FOUNDRY / BELAIR ROAD SUPPLY
6" CAP	4			
6" X 6" TEE	1			
FIRE HYDRANT	7	7	4" - 5" S.B. 1" - 5/8" S.B.	MUELLER / BELAIR ROAD SUPPLY

NAME OF UTILITY CONTRACTOR: KINSLEY CONSTRUCTION, INC.  
SURVEY AND DRAFTING DIVISION AS-BUILT DATE: 1-18-00



**PART II - WATER**

- ALL WATER MAINS TO BE D.I.P. CLASS 52 UNLESS OTHERWISE NOTED.
- TOPS OF ALL WATER MAINS TO HAVE A MINIMUM OF 3-1/2' COVER UNLESS OTHERWISE NOTED.
- VALVES ADJACENT TO TEES SHALL BE STRAPPED TO TEES.
- ALL FITTINGS SHALL BE BUTTRESSED OR ANCHORED WITH CONCRETE IN ACCORDANCE WITH THE STANDARD DETAILS UNLESS OTHERWISE PROVIDED FOR ON THE DRAWINGS.
- FIRE HYDRANTS SHALL BE SET TO THE BURY LINE ELEVATIONS SHOWN ON THE DRAWINGS. ALL FIRE HYDRANTS SHALL BE RESTRAINED AND BUTTRESSED WITH CONCRETE IN ACCORDANCE WITH STANDARD DETAILS. SOIL AROUND THE FIRE HYDRANT SHALL BE COMPACTED IN ACCORDANCE WITH SECTIONS 1000 AND 1005 OF THE STANDARD SPECIFICATIONS.
- THE CONTRACTOR SHALL NOT OPERATE ANY WATER MAIN VALVES ON THE EXISTING WATER SYSTEM.
- ALL WATER HOUSE CONNECTIONS SHALL BE FOR INSIDE METER SETTING, UNLESS OTHERWISE NOTED ON THE PLANS OR IN THE SPECIFICATIONS.
- ALL D.I.P. FITTINGS SHALL BE IN ACCORDANCE WITH A.W.W.A. SPECIFICATION C-153 DUCTILE IRON COMPACT FITTINGS, 3 INCH THROUGH 12 INCH FOR WATER AND OTHER LIQUIDS.
- ALL EXISTING VALVES TO BE CLOSED WHEN CONNECTION TO THE SYSTEM IS MADE.

**BENCHMARK**

**DESCRIPTION**

- NO. 2244002 - HOWARD COUNTY MONUMENT
- NO. 2243003 - HOWARD COUNTY MONUMENT

SHEET INDEX	
SHEET No.	DESCRIPTION
1	TITLE SHEET
2	WATER PLAN
3	WATER PROFILE

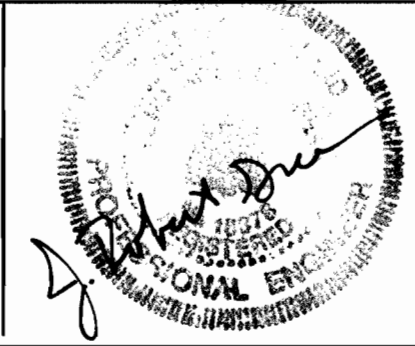
REVIEWED FOR NATURAL RESOURCE CONSERVATION SERVICE AND MEETS TECHNICAL REQUIREMENT  
*Cheryl Simmons* 6/23/99  
SIGNATURE DATE

THIS DEVELOPMENT PLAN IS APPROVED FOR SOIL EROSION AND SEDIMENT CONTROL BY THE HOWARD COUNTY CONSERVATION DISTRICT.  
APPROVED *John R. Robertson* 6/23/99  
HOWARD S.C.D. DATE

SEDIMENT CONTROL MEASURES WILL BE IMPLEMENTED IN ACCORDANCE WITH SECTION 219 OF THE SPECIFICATIONS AND SITE DEVELOPMENT PLAN SDP 99-99.

DEPARTMENT OF PUBLIC WORKS HOWARD COUNTY, MARYLAND  
DEPARTMENT OF PLANNING & ZONING HOWARD COUNTY, MARYLAND  
*Michael A. Donnell* 6/24/99  
CHIEF - BUREAU OF UTILITIES - DATE  
*[Signature]* *[Signature]*  
CHIEF - DEVELOPMENT ENGINEERING DIVISION - DATE

**DMW**  
Daft · McCune · Walker, Inc.  
A Team of Land Planners, Landscape Architects, Engineers, Surveyors & Environmental Professionals  
200 East Pennsylvania Avenue  
Towson, Maryland 21286  
410 296 3333  
Fax 296 4705



DESIGN BY:	KCI	1	AS-BUILT CONDITIONS ADDED TO PLAN	3/15/00
DRAWN BY:	CW			
CHECKED BY:	CW			
DATE:	6/14/99			
BY NO.			REVISION	DATE

**VICINITY MAP**  
SCALE: 1" = 600'  
CONTRACT NO. 44-3764-D

WATER CODE: ED6  
TEST GRADIENT: 700 PSI  
SEWER CODE: 4900000

TITLE SHEET

As-Built

**Columbia Gateway**  
Office & Commercial Buildings  
Parcel Q2 - Columbia Gateway, 6th Election District, Howard County, Maryland

OWNER: THE HOWARD RESEARCH AND DEVELOPMENT CORPORATION  
10275 LITTLE PATUXENT PARKWAY  
COLUMBIA, MD 21044

DEVELOPER: AAK II, INC.  
8805 COLUMBIA 100 PKWY  
SUITE 101  
COLUMBIA, MD 21045

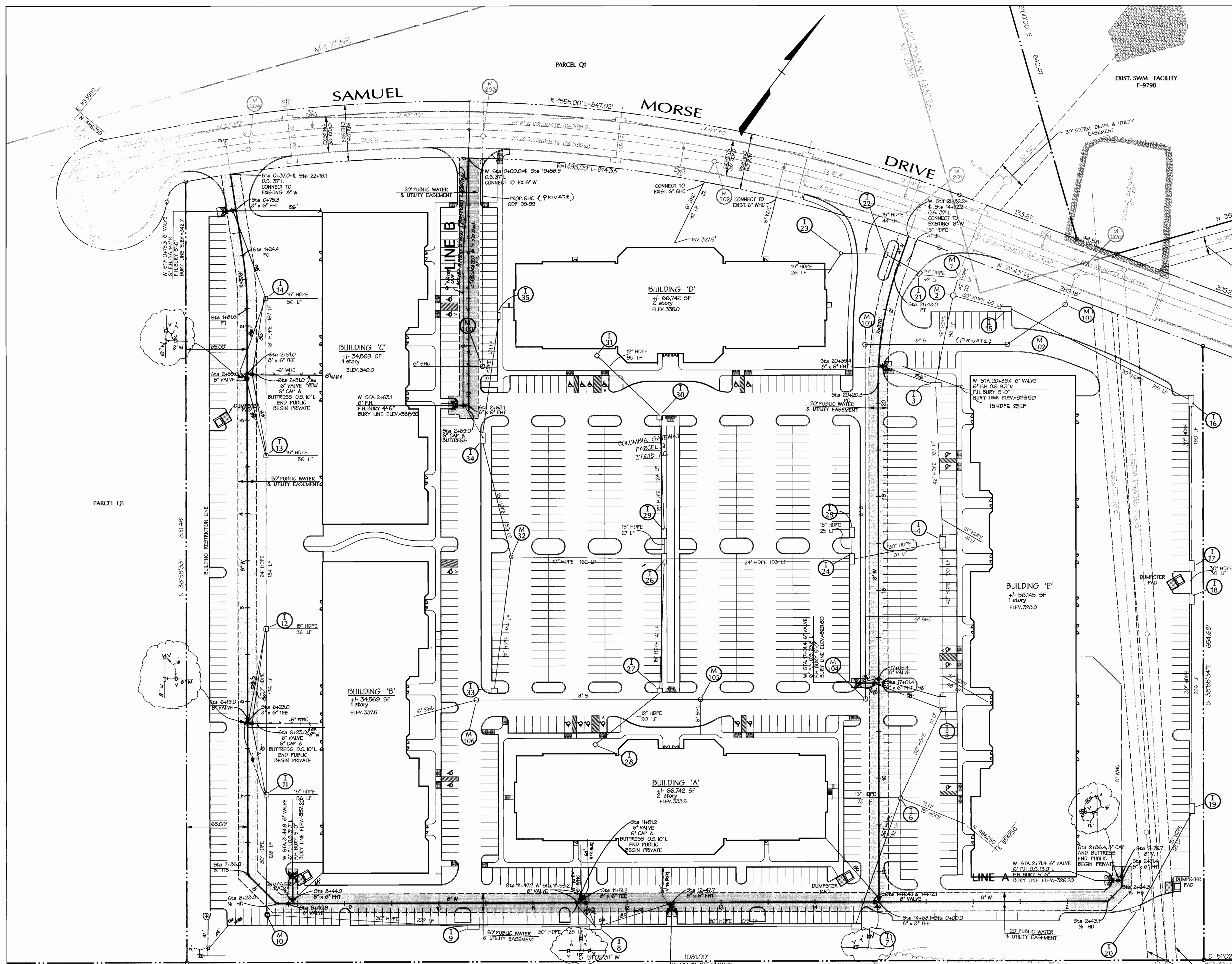
CONTRACT NO. 44-3764-D

AS SHOWN  
SHEET  
1 OF 3

ITEMS	COORDINATES		STATION
	NORTH	EAST	
8" P. C.	486240.44	853230.53	W.L. STA. 1+24.4
8" P. T.	486198.89	853269.70	W.L. STA. 1+81.6
18 BEND	486256.43	85.648.97	W.L. STA. 7+85.0
18 BEND	485725.59	853891.98	W.L. STA. 8+28.0
8" X 8" TEE	486128.35	854189.78	W.L. STA. 14+68.1
8" P. C.	486558.32	853841.89	W.L. STA. 20+20.3
8" x 6" TEE (For Hydrant Connection)	486572.76	853830.77	W.L. STA. 20+39.4
8" P. T.	486669.15	853779.69	W.L. STA. 21+48.0
18 BEND (To Bldg. E)	486281.51	854378.54	W.L. STA. 2+43.1
18 BEND (To Bldg. E)	486302.34	854380.98	W.L. STA. 2+64.3
8" CAP & BUTTRESS (To Bldg. E)	486319.52	854367.08	W.L. STA. 2+86.0
EXIST. 6" CAP AT PROP. CONNECTION (Hyd.)	**	**	W.L. STA. 0+00.0
6" X 6" TEE	486266.50	853571.83	W.L. STA. 2+63.1

CONTRACTOR TO TEST PIT TO DETERMINE ACTUAL LOCATION AND ELEVATION OF EXISTING 8" W.

\*\* CONTRACTOR TO TEST PIT TO DETERMINE ACTUAL LOCATION AND ELEVATION OF EXISTING 6" CAP & BUTTRESS



OPEN SPACE  
PARCEL 12

As BUILT

INTERSTATE ROUTE 95 M.S.R.C. RW Plats 34760 and 34762

INTERSTATE ROUTE 95 M.S.R.C. RW Plats 34760 and 34762

DEPARTMENT OF PUBLIC WORKS  
HOWARD COUNTY, MARYLAND

Michael A. ... 6/21/99  
CHIEF - BUREAU OF UTILITIES - DATE

DEPARTMENT OF PLANNING & ZONING  
HOWARD COUNTY, MARYLAND

...  
CHIEF - DEVELOPMENT ENGINEERING DIVISION - DATE

**DMW**  
Daft · McCune · Walker, Inc.

A Team of Land Planners, 200 East Pennsylvania Avenue  
Landscape Architects, Towson, Maryland 21286  
Engineers, Surveyors & Environmental Professionals 410 296 3333  
Fax 296 4705



DESIGN BY: CW  
DRAWN BY: CW  
CHECKED BY: KLI  
DATE: 6/14/99

REVISION

KLI	2	AS BUILT CONDITIONS ADDED TO PLAN	3/14/00
CW	1	REVISED FIRE HYDRANT BURY ELEVATION	

WATER PLAN

600 SCALE MAP NO. 42 & 43 BLOCK NO. 12 & 7

**Columbia Gateway**  
Office & Commercial Buildings

Parcel Q2 - Columbia Gateway, 6th Election District, Howard County Maryland

OWNER: THE HOWARD RESEARCH AND DEVELOPMENT CORPORATION  
10275 LITTLE PATUXENT PARKWAY  
SUITE 101  
COLUMBIA, MD 21046

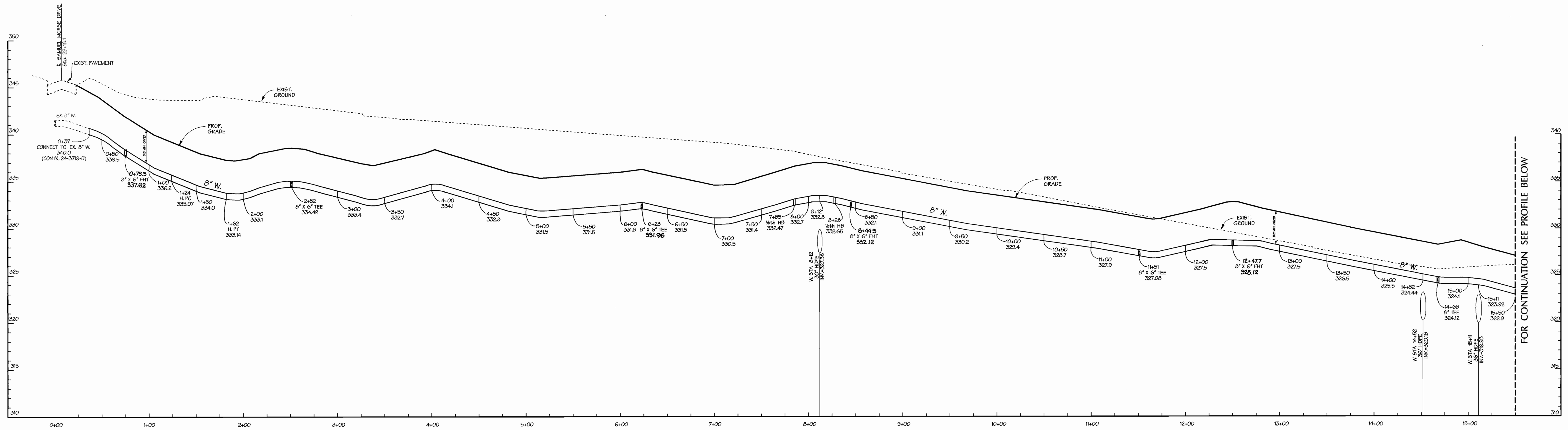
DEVELOPER: AAK II, INC.  
8805 COLUMBIA 100 PKWY  
SUITE 101  
COLUMBIA, MD 21045

CONTRACT NO. 44-3764-D

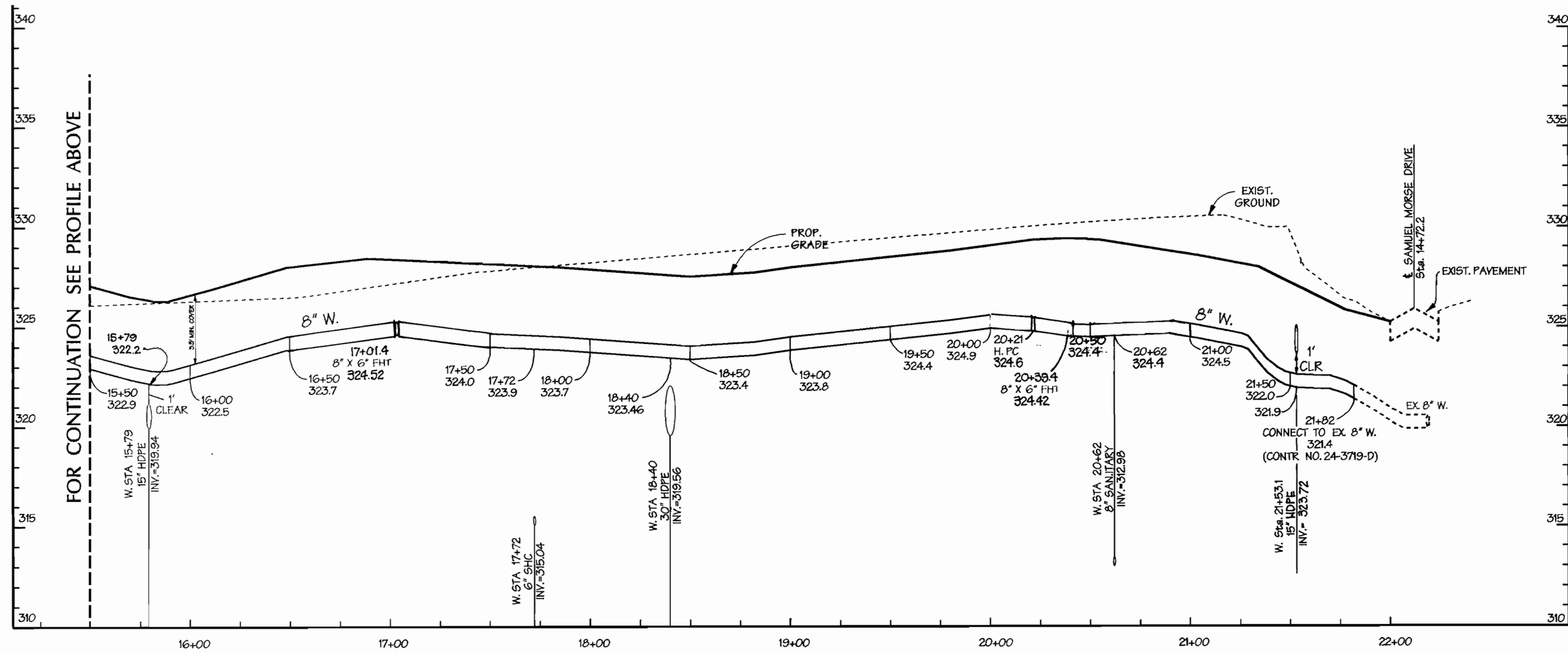
SHEET 2 OF 3

7/10/00 10:23:34 AM 1/28/00 10:23:34 AM

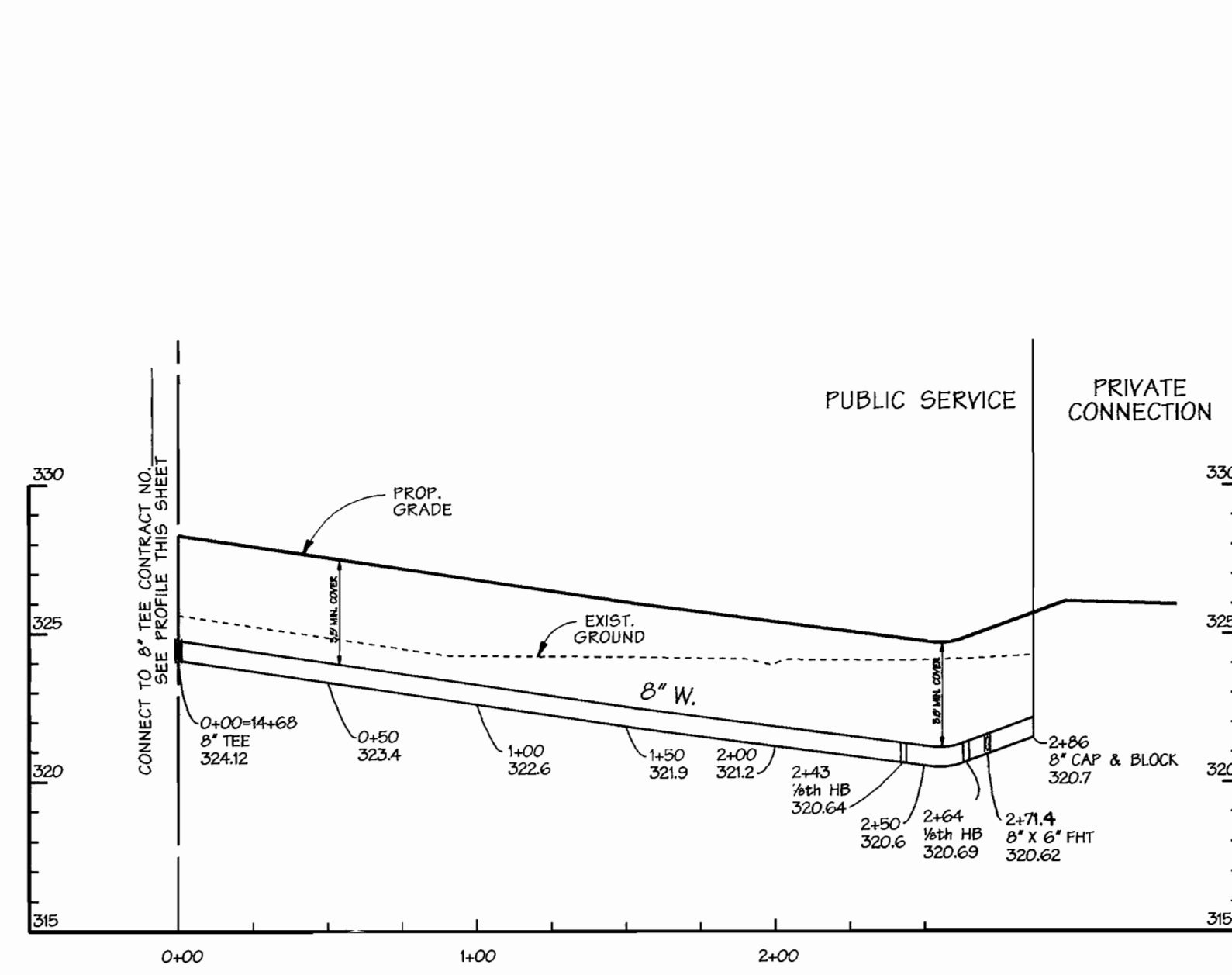
7/10/00 10:23:34 AM 1/28/00 10:23:34 AM



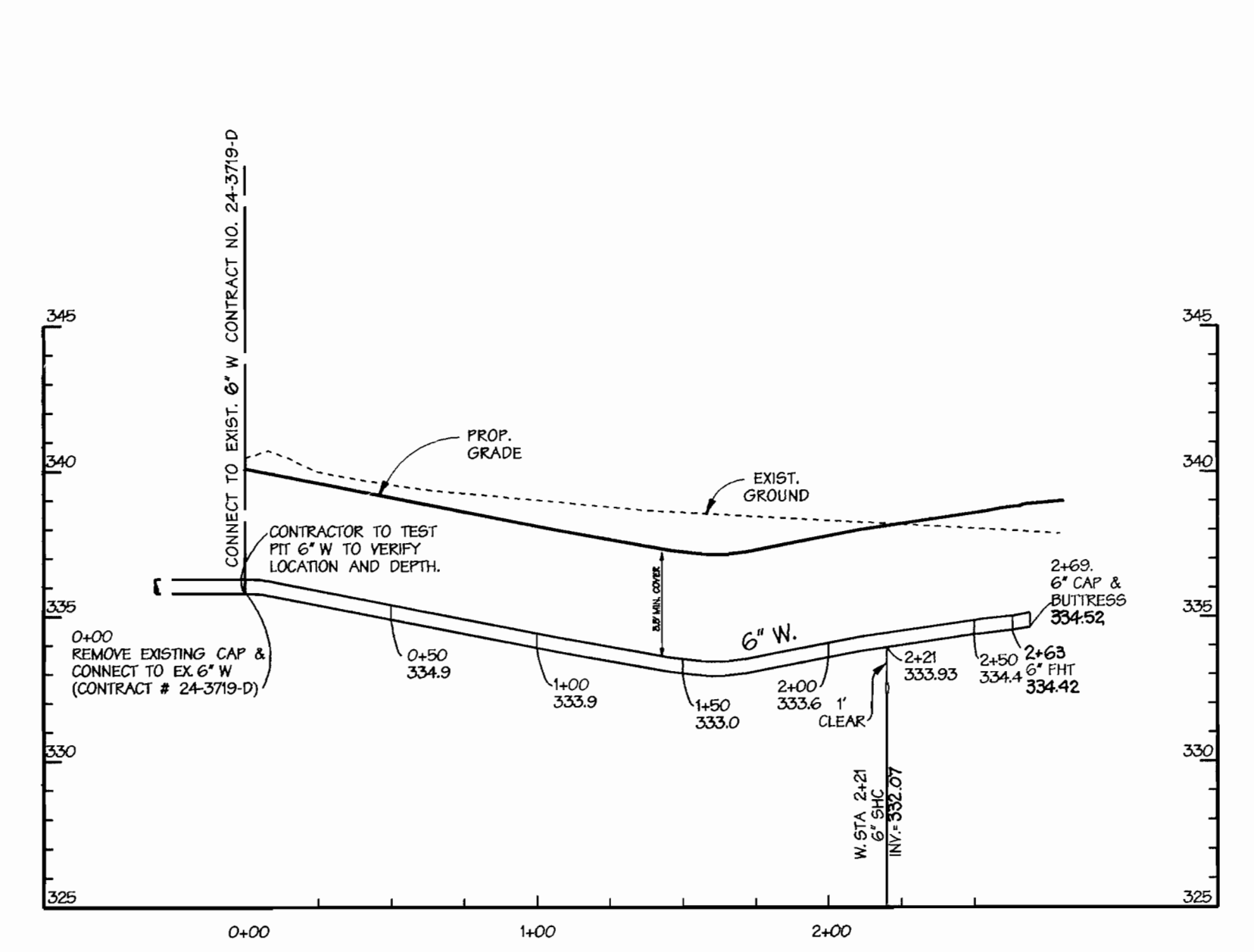
8" WATER SERVICE  
SCALE: HORIZ. 1"=50'  
VERT. 1"=5'



8" WATER SERVICE  
SCALE: HORIZ. 1"=50'  
VERT. 1"=5'



LINE A  
SCALE: HORIZ. 1"=50'  
VERT. 1"=5'



6" FIRE HYDRANT LEAD (LINE B)  
SCALE: HORIZ. 1"=50'  
VERT. 1"=5'

DEPARTMENT OF PUBLIC WORKS HOWARD COUNTY, MARYLAND  <i>Michael J. ...</i> CHIEF - BUREAU OF UTILITIES - DATE		DEPARTMENT OF PLANNING & ZONING HOWARD COUNTY, MARYLAND  <i>...</i> CHIEF - DEVELOPMENT ENGINEERING DIVISION - DATE		<b>DMW</b> Daft · McCune · Walker, Inc. A Team of Land Planners, 200 East Pennsylvania Avenue Landscape Architects, Towson, Maryland 21286 Engineers, Surveyors & Environmental Professionals 410 296 3333 Fax 296 4705		DESIGN BY: <i>CW</i> DRAWN BY: <i>CW</i> CHECKED BY: <i>...</i> DATE: <i>6/1/99</i>		600 SCALE MAP NO. 42 & 43 BLOCK NO. 12 & 7		WATER PROFILE		AS BUILT <b>Columbia Gateway</b> Office & Commercial Buildings Parcel Q2 - Columbia Gateway, 6th Election District, Howard County Maryland OWNER: THE HOWARD RESEARCH AND DEVELOPMENT CORPORATION 10275 LITTLE PATUXENT PARKWAY COLUMBIA, MD 21044 DEVELOPER: AAK II, INC. 8805 COLUMBIA 100 PKWY SUITE 101 COLUMBIA, MD 21045 CONTRACT NO. 44-3764-D		SCALE: AS SHOWN	SHEET 3 OF 3
--	--	---	--	---	--	--	--	--	--	---------------	--	---	--	--------------------	-----------------