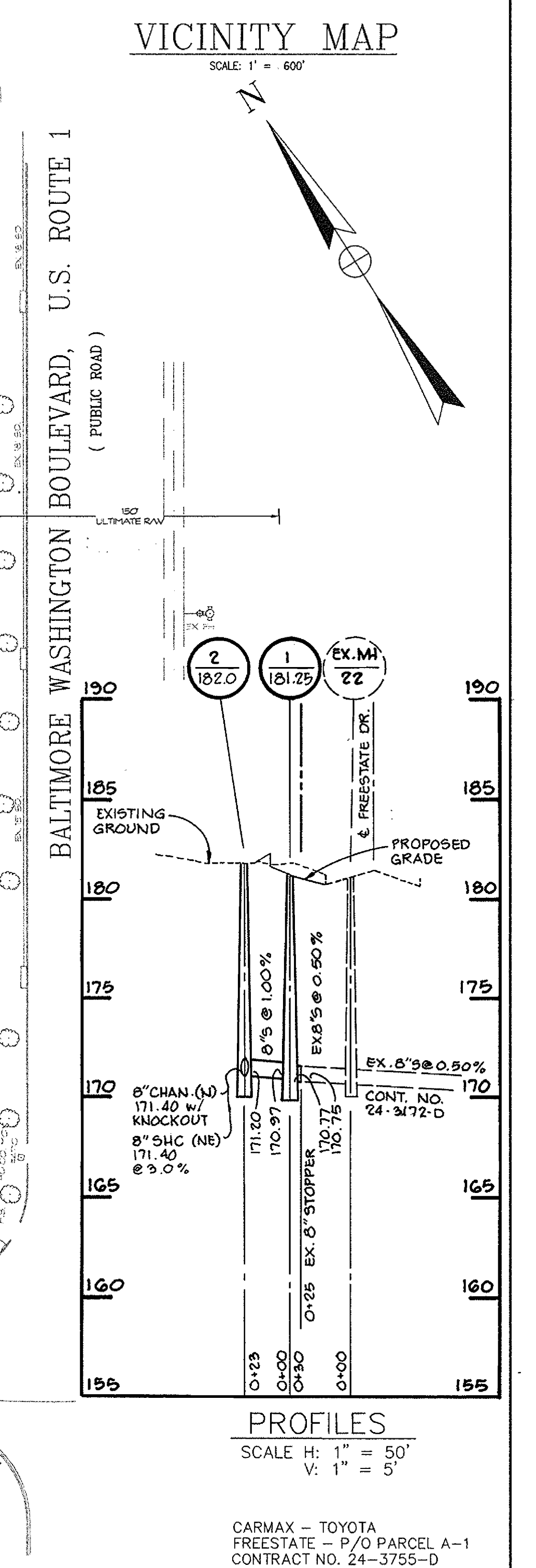
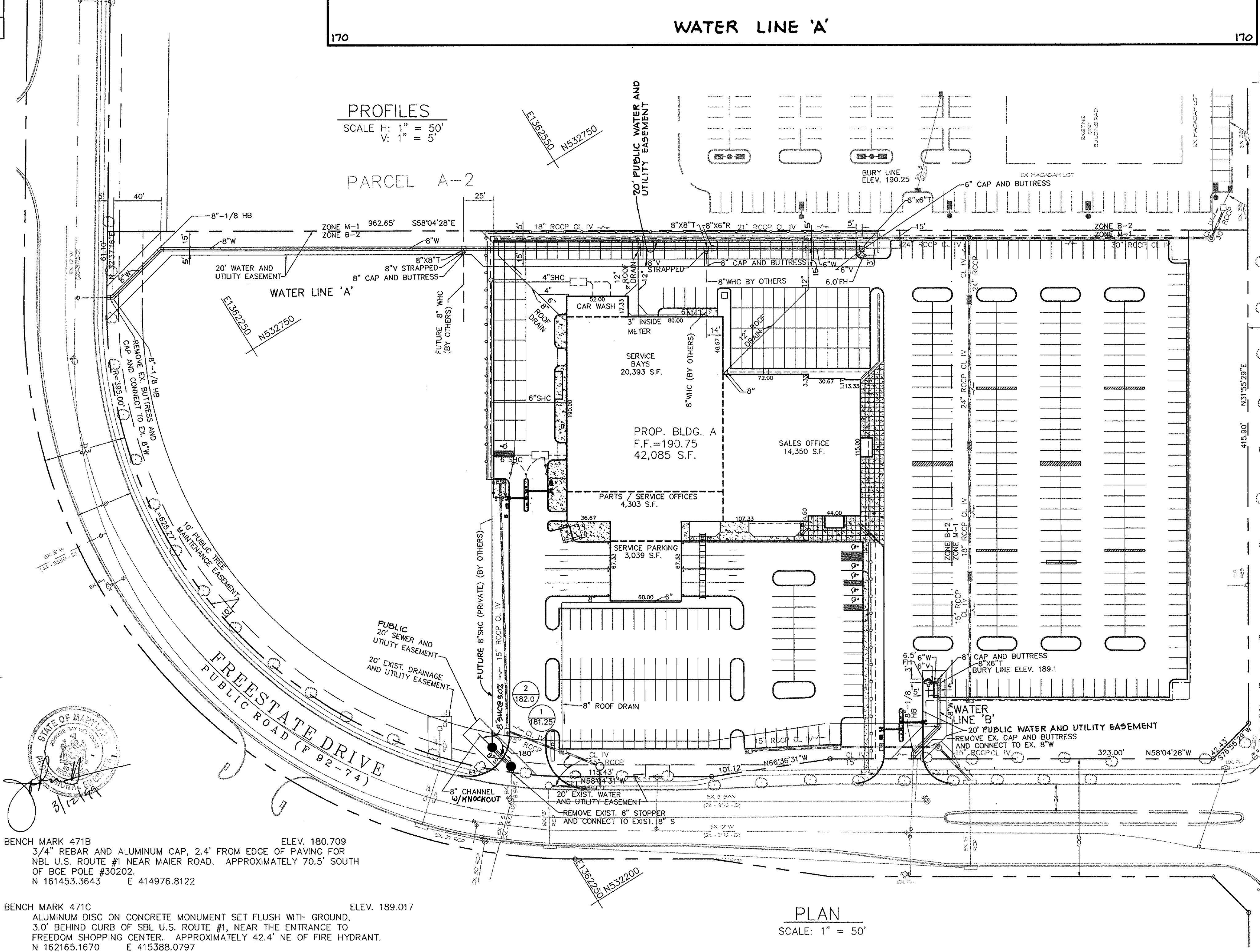
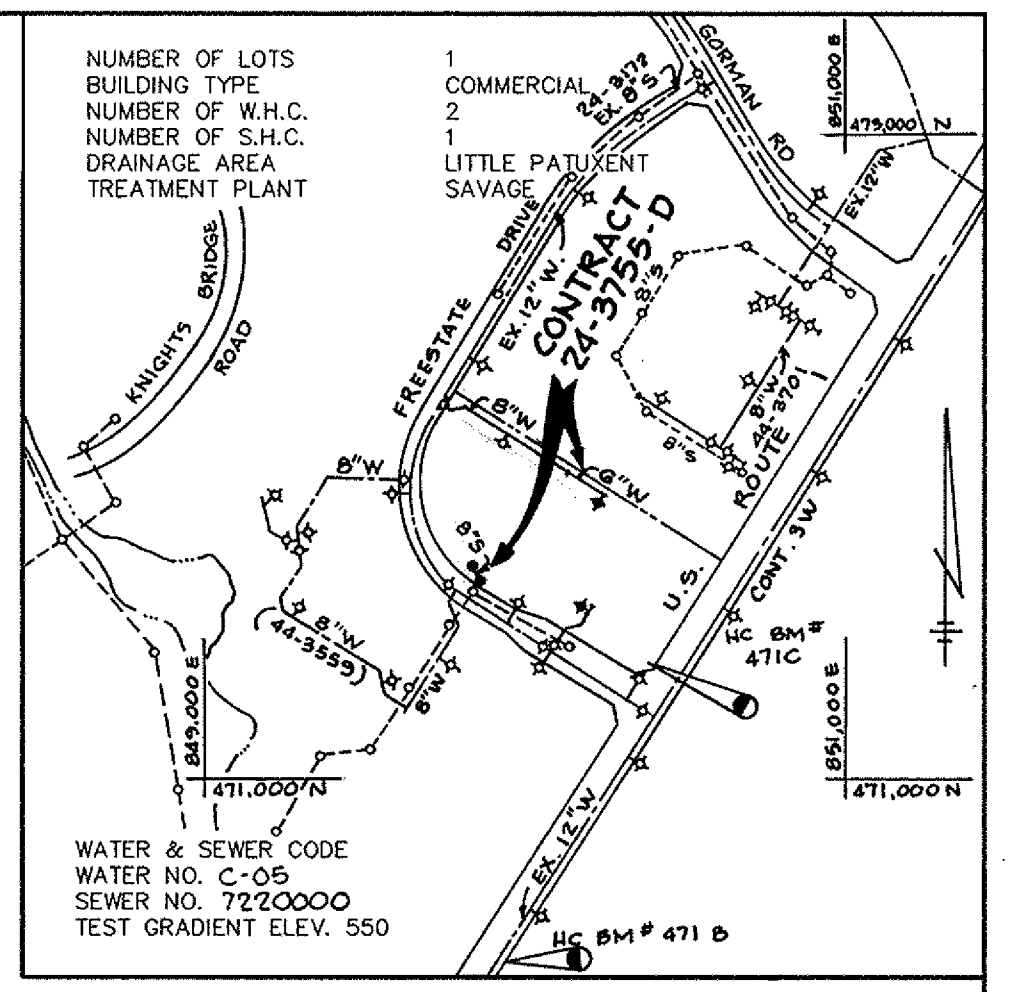
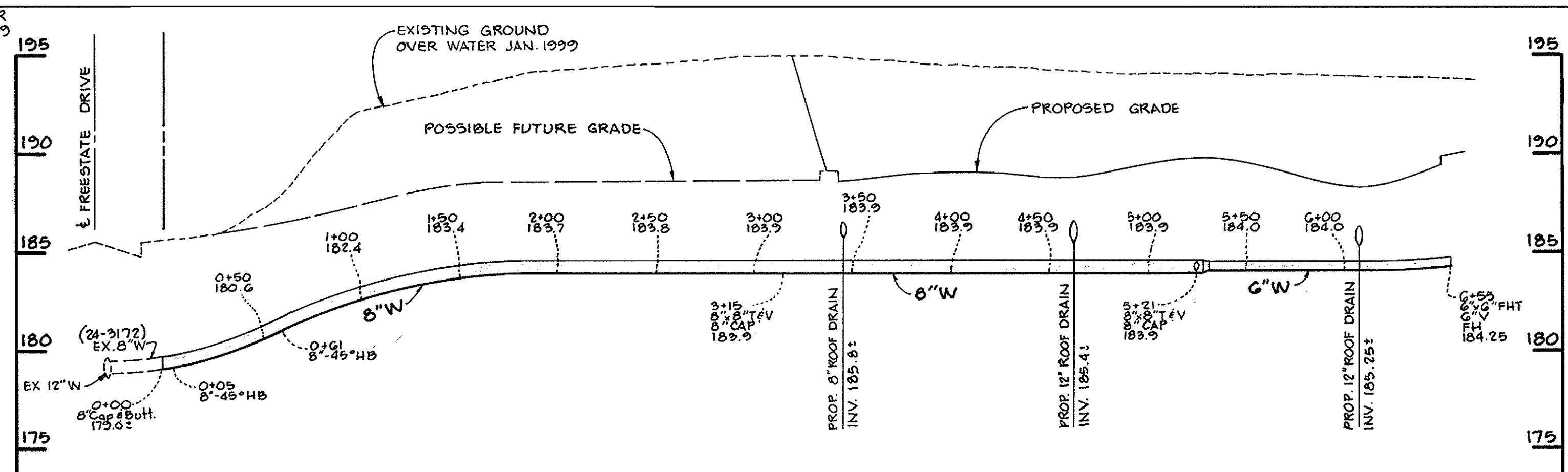
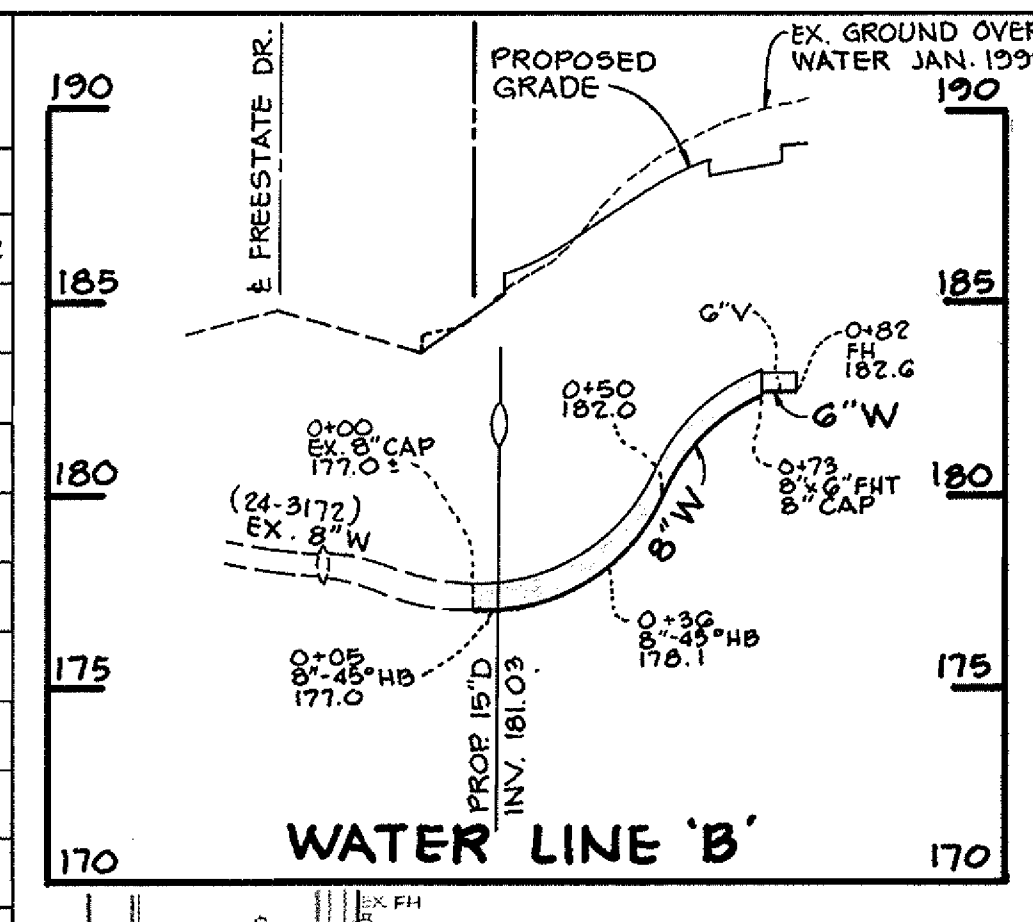


### QUANTITIES

ITEM	QUANTITIES ESTIMATED	AS - BUILT		
		QUANTITIES	TYPE	MANUFACTURER/SUPPLIER
8" WATER	585 L.F.			
6" WATER	145 L.F.			
8" VALVES	2 EA.			
FIRE HYDRANTS	2 EA.			
4' DIA. MANHOLES	2 EA.			
8" S (P.V.C.)	28 L.F.			
8" SHC	17 LF			

UTILITY CONTRACTOR \_\_\_\_\_ SURVEY AND DRAFTING DIVISION AS-BUILT DATE \_\_\_\_\_

- ### GENERAL NOTES
- APPROXIMATE LOCATION OF EXISTING MAINS ARE SHOWN. THE CONTRACTOR SHALL TAKE ALL NECESSARY PRECAUTIONS TO PROTECT EXISTING MAINS AND SERVICES AND MAINTAIN UNINTERRUPTED SUPPLY. ANY DAMAGE INCURRED SHALL BE REPAIRED IMMEDIATELY TO THE SATISFACTION OF THE ENGINEER AT THE CONTRACTOR'S EXPENSE.
  - ALL HORIZONTAL CONTROLS ARE BASED ON MARYLAND STATE COORDINATES.
  - ALL VERTICAL CONTROLS ARE BASED ON U.S.G.S. DATA.
  - ALL PIPE ELEVATIONS SHOWN ARE INVERT ELEVATIONS.
  - CLEAR ALL UTILITIES BY A MINIMUM OF 6', CLEAR ALL POLES BY 2'-0" MINIMUM OR TUNNEL AS REQUIRED. THE OWNER HAS CONTACTED THE UTILITY COMPANIES AND HAS MADE ARRANGEMENTS FOR BRACING OF POLES AS SHOWN ON THE DRAWINGS. IN THE EVENT THE CONTRACTOR'S WORK REQUIRES THE BRACING OF ADDITIONAL POLES, ANY COST INCURRED BY THE OWNER FOR BRACING OF ADDITIONAL POLES OR DAMAGES SHALL BE DEDUCTED FROM MONEY OWED THE CONTRACTOR. THE CONTRACTOR SHALL COORDINATE WITH THE UTILITY COMPANIES TO SCHEDULE THE BRACING OF THE POLES.
  - FOR DETAILS NOT SHOWN ON THE DRAWINGS, AND FOR MATERIALS AND CONSTRUCTION METHODS USE HOWARD COUNTY DESIGN MANUAL VOLUME IV, STANDARD SPECIFICATIONS AND DETAILS FOR CONSTRUCTION (LATEST EDITION). THE CONTRACTOR SHALL HAVE A COPY OF VOLUME IV ON THE JOB.
  - CONTRACTOR SHALL NOTIFY THE FOLLOWING UTILITY COMPANIES OR AGENCIES AT LEAST FIVE WORKING DAYS BEFORE STARTING WORK SHOWN ON THESE PLANS.
    - STATE HIGHWAY ADMINISTRATION..... 531-5533
    - BGE CO. CONTRACTOR SERVICES..... 850-4620
    - BGE CO. UNDER GROUND DAMAGE CONTROL ..... 787-9068
    - MISS UTILITY ..... 1-800-257-7777
    - HOWARD COUNTY DEPARTMENT OF WORKS BUREAU OF UTILITIES. .... 313-4900
  - TREES AND SHRUBS ARE TO BE PROTECTED FROM DAMAGE TO MAXIMUM EXTENT. TREES AND SHRUBS LOCATED WITHIN CONSTRUCTION STRIP ARE NOT TO BE REMOVED BY THE CONTRACTOR.
  - CONTRACTOR SHALL REMOVE TREES, STUMPS, AND ROOTS ALONG LINE OF EXCAVATION. PAYMENT FOR SUCH REMOVAL SHALL BE INCLUDED IN THE UNIT PRICE BID FOR CONSTRUCTION OF THE MAIN.
  - ALL WATER MAINS TO BE D.I.P. CLASS 52 UNLESS OTHERWISE NOTED.
  - TOPS OF ALL WATER MAINS TO HAVE A MINIMUM OF 3'-1/2' COVER UNLESS OTHERWISE NOTED.
  - VALVES ADJACENT TO TREES SHALL BE STRAPPED TO TREES.
  - ALL FITTINGS SHALL BE BUTTRESSED OR ANCHORED WITH CONCRETE IN ACCORDANCE WITH THE STANDARD DETAILS UNLESS OTHERWISE PROVIDED FOR ON DRAWINGS.
  - THE CONTRACTOR SHALL NOT OPERATE ANY WATER MAIN VALVES ON THE EXISTING WATER SYSTEM.
  - ALL WATER HOUSE CONNECTIONS SHALL BE FOR INSIDE METER SETTING UNLESS OTHERWISE NOTED ON PLANS OR IN SPECIFICATIONS.
  - ALL SEWER MAINS SHALL BE C.S.P.X., V.C.P.X., P.V.C. OR D.I.P., UNLESS OTHERWISE NOTED.
  - THE CONTRACTOR SHALL PROVIDE A JOINT IN ALL SEWER MAINS WITHIN 2'-0" OF EXTERIOR MANHOLE WALL.
  - ALL MANHOLES SHALL BE 4'-0" INSIDE DIAMETER, UNLESS OTHERWISE NOTED.
  - MANHOLES DESIGNATED THUS: WT, SHALL HAVE A WATERTIGHT FRAME AND COVER.



**SEDIMENT CONTROL MEASURES FOR THIS CONTRACT WILL BE IMPLEMENTED IN ACCORDANCE WITH SECTION 219 OF THE HOWARD COUNTY STANDARD SPECIFICATIONS AND AS PER SITE DEVELOPMENT PLANS SDP 99-88**

REVIEWED FOR HOWARD COUNTY SOIL CONSERVATION DISTRICT AND MEETS TECHNICAL REQUIREMENTS  
*Clayton Simmons* 3/17/99  
 NATURAL RESOURCES CONSERVATION SERVICES

THIS PLAN IS APPROVED FOR SOIL EROSION AND SEDIMENT CONTROL BY THE HOWARD SOIL CONSERVATION DISTRICT  
*John R. Dalton* 3/17/99  
 HOWARD SOIL CONSERVATION DISTRICT

BENCH MARK 471B ELEV. 180.709  
 3/4" REBAR AND ALUMINUM CAP, 2.4' FROM EDGE OF PAVING FOR NBL U.S. ROUTE #1 NEAR MAIER ROAD. APPROXIMATELY 70.5' SOUTH OF BGE POLE #30202.  
 N 161453.3643 E 414976.8122

BENCH MARK 471C ELEV. 189.017  
 ALUMINUM DISC ON CONCRETE MONUMENT SET FLUSH WITH GROUND, 3.0' BEHIND CURB OF SBL U.S. ROUTE #1, NEAR THE ENTRANCE TO FREEDOM SHOPPING CENTER. APPROXIMATELY 42.4' NE OF FIRE HYDRANT.  
 N 162165.1670 E 415388.0797

DEPARTMENT OF PUBLIC WORKS  
 HOWARD COUNTY, MARYLAND  
*Robert Berger* 3-12-99  
 CHIEF, BUREAU OF UTILITIES DATE

DEPARTMENT OF PLANNING AND ZONING  
 HOWARD COUNTY, MARYLAND  
*John Dalton* 3/10/99  
 CHIEF, DEVELOPMENT ENGINEERING DIVISION DATE

**PHOENIX ENGINEERING, INC.**  
 CONSULTING ENGINEERS  
 813 MAIDEN CHOICE LANE  
 BALTIMORE, MARYLAND 21228  
 (410) 247-8833

DES.	DRN.	CHK.	DATE	BY	NO.	DESCRIPTION	DATE
R.J.W.	D.R.B.	J.R.H.	2-99				

**PLAN & PROFILES**  
 OF  
**WATER AND SEWER MAINS**  
 600' SCALE MAP NO. 47 BLOCK NO. 17

**TOYOTA CARMAX**

FREESTATE  
 P/O PARCEL A-1  
 ELECTION DISTRICT 6  
 CONTRACT NO. 24-3755-D

SCALE: 1" = 50'  
 DRAWING NO. 1 OF 1  
 PROJ 99001.00 WATER.DWG