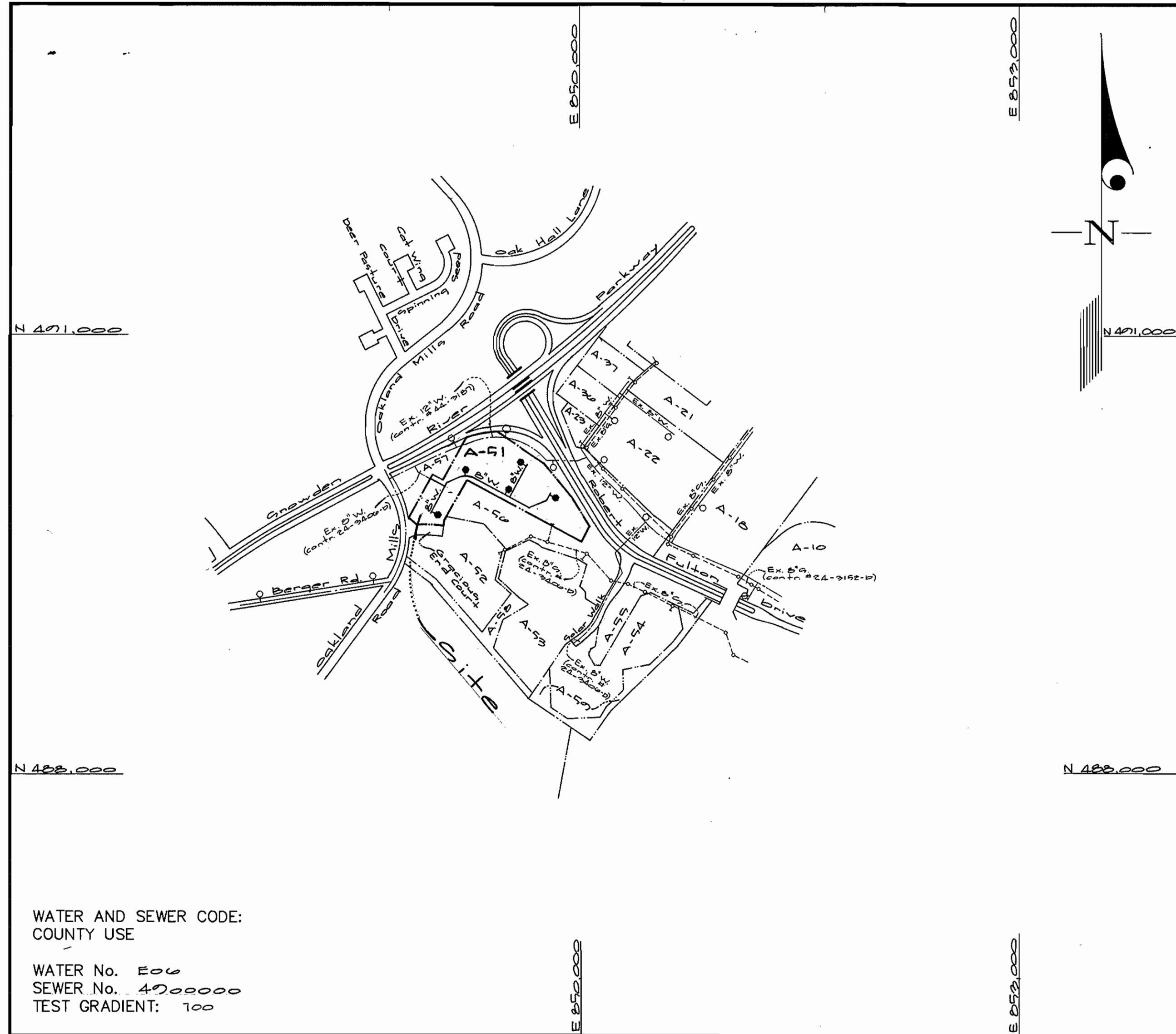


QUANTITIES				
ITEMS	QUANTITIES ESTIMATED	AS-BUILT		
		QUANTITIES	TYPE	MANUFACTURER/SUPPLIER
4" Water	20 LF			
6" Water	112 LF			
8" Water	1933 LF			
4" V	8 ea.			
8" V	5 ea.			
8" x 4" tee	8 ea.			
8" x 4" FHT & V.	5 ea.			
8" x 8" tee	2 ea.			
Fire Hydrants	5 ea.			

NAME OF UTILITY CONTRACTOR: _____

SURVEY AND DRAFTING DIV. CHECKBOX: _____ AS-BUILT DATE: _____



VICINITY MAP
SCALE: 1"=600'

CONTRACT No. 44-3713 D
Gateway Commerce Center
Parcel 'A-51'
HOWARD COUNTY, MARYLAND
DEPARTMENT OF PUBLIC WORKS

TYPE OF BUILDING	Apartment
NUMBER OF UNITS	7 buildings (200 apartment units & pool)
NUMBER OF S.H.C.'s	—
NUMBER OF W.H.C.'s	2
DRAINAGE AREA	—
TREATMENT PLANT	—

GENERAL NOTES

- PART I**
- Approximate location of existing mains are shown. The contractor shall take all necessary precautions to protect existing mains and services and maintain uninterrupted supply. Any damage incurred shall be repaired immediately to the satisfaction of the Engineer at the Contractor's expense.
 - All horizontal controls are based on Maryland State Coordinates [North American Datum 1983 (NAD '83)].
 - All vertical controls are based on U.S.G.S. data.
 - All pipe elevations shown are invert elevations.
 - Clear all utilities by a minimum of 6" - Clear all poles by 2'-0" minimum or tunnel as required. The owner has contacted the utility companies and has made arrangements for bracing of poles as shown on the drawings. In the event the contractor's work requires the bracing of additional poles, any cost incurred by the owner for bracing of additional poles or damages shall be deducted from money owed the contractor. The contractor shall coordinate with the utility companies to schedule the bracing of the poles.
 - For details not shown on the drawings, and for materials and construction methods use Howard County Design Manual, Volume IV, Standard Specifications and Detail for Construction (Latest Edition). The contractor shall have a copy of Volume IV on the job.
 - Where test pits have been made on existing utilities, they are noted by the symbol at the location of the test pit. A note or notes containing the results of the test pit or pits is included on the drawings. Existing utilities in the vicinity of the proposed work for which test pits have not been dug shall be located by the contractor two weeks in advance of construction operations at his own expense.
 - Contractor shall notify the following utility companies or agencies at least (5) working days before starting work shown on these plans:

State Highway Administration	531-5533
BGE Contractor Services	850-4620
BGE Under Ground Damage Control	787-9068
Miss Utility	1-800-257-7777
Colonial Pipeline Co.	795-1390
Howard County Department of Public Works Bureau of Utilities	313-4900
 - Trees and shrubs are to be protected from damage to maximum extent. Trees and shrubs located within the construction strip are not to be removed or damaged by the contractor.
 - Contractor shall remove trees, stumps and roots along line of excavation. Payment for such removal shall be included in the unit price bid for construction of the main.
 - The contractor shall notify the Bureau of Highways, Howard County, at (410) 313-2450 at least five (5) working days before any open cut of any County road or boring/jacking operation on County roads for laying water/sewer mains or house connections. The approval of these drawings will constitute compliance with DPW requirement per Section 18.114(a) of the Howard County Code.

- PART II - WATER**
- All water mains to be D.I.P. Class 52 unless otherwise noted.
 - Tops of all water mains to have a minimum of 3-1/2' cover unless otherwise noted.
 - Valves adjacent to tees shall be strapped to tees.
 - All fittings shall be buttressed or anchored with concrete in accordance with the Standard Details unless otherwise provided for on the drawings.
 - Fire hydrants shall be set to the bury line elevations shown on the drawings. All fire hydrants shall be restrained and buttressed with concrete in accordance with the Standard Details. Soil around the fire hydrant shall be compacted in accordance with Section 1000 and 1005 of the Standard Specifications.
 - The contractor shall not operate any water main valves on the existing water system.
 - All water house connections shall be for inside meter setting unless otherwise noted on plans or in specifications.
 - For sprinkler system for all townhomes or multi-family dwelling units should have a minimum of 1' connection with a 3/4" meter.

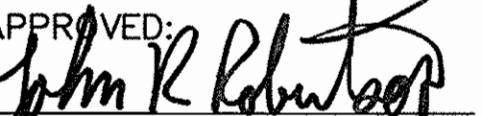
- PART III - SEWER**
- All sewer mains shall be DIP and P.V.C. unless otherwise noted.
 - All manholes shall be 4'-0" inside diameter unless otherwise noted.
 - Force mains shall be D.I.P. only.
 - Manholes shown with 12" and 16" walls are for brick manholes only.
 - Manholes designated W.T. in plan and profile shall have watertight frame and covers, Standard Detail G5.52. Where watertight frame and cover is used, set top of frame 1'-6" above finished grade unless otherwise noted on drawings.
 - House(s) with the symbol "C.N.S." indicates that cellar cannot be served.

Sediment Control Measures will be implemented in accordance with Section 219 of the Specifications & with Site Development Plan 98P-77-1V ; Drawings for Sediment & Erosion Control.

REVIEWED FOR HOWARD SOIL CONSERVATION DISTRICT AND MEETS TECHNICAL REQUIREMENT.


 SIGNATURE DATE 10/21/98
U.S.D.A. NATURAL RESOURCES CONSERVATION SERVICE

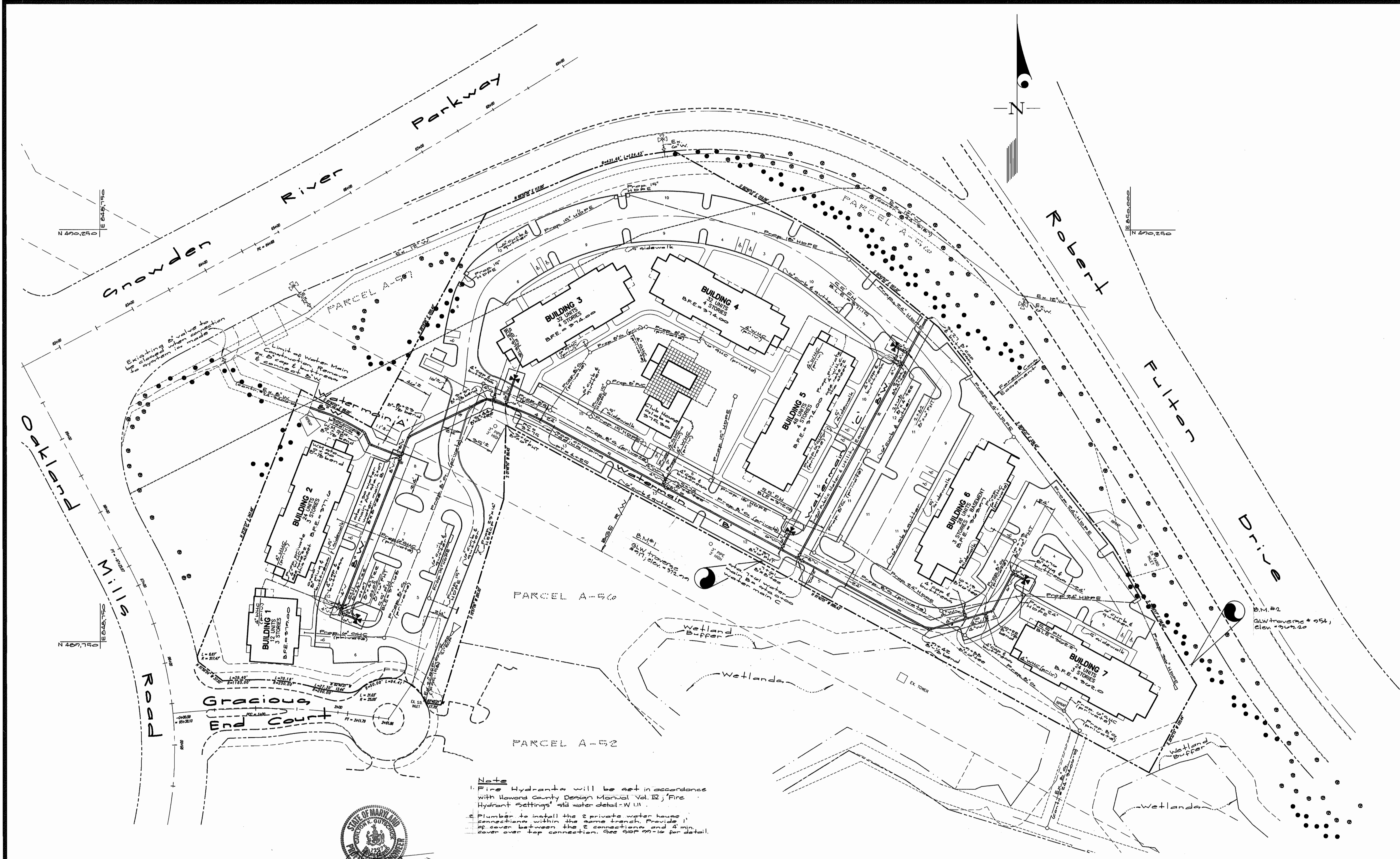
THIS DEVELOPMENT PLAN IS APPROVED FOR SOIL EROSION AND SEDIMENT CONTROL BY THE HOWARD SOIL CONSERVATION DISTRICT.

APPROVED: 
 HOWARD S.C.D. DATE 10/21/98



GLW GUTSCHICK LITTLE & WEBER, P.A. CIVIL ENGINEERS, SURVEYORS, PLANNERS, LANDSCAPE ARCHITECTS 3909 NATIONAL DRIVE - SUITE 250 - BURTONSVILLE OFFICE PARK - BURTONSVILLE, MARYLAND 20866 TEL: (410) 880-1820 ~ FAX: (301) 421-4186	Developer: Shelter Development LLC Suite 500 Park Charles 248 N. Charles Street Baltimore, Md 21201 (410) 762-0522	DES: BEV DRN: KLP CHK: BEV DATE: Aug 1998	Public Water Extention Cover Sheet	Gateway Commerce Center Parcel 'A-51' Plat No. 11957 Cont. # 44-3713-D Guilford Election District No. 6 Howard County, Maryland
	BY NO REVISION DATE	600' SCALE MAP NO. 42 BLOCK NO. 5	SCALE AS SHOWN SHEET 1 OF 3	
	DEPARTMENT OF PUBLIC WORKS HOWARD COUNTY, MARYLAND DATE 10/14/98 CHIEF, BUREAU OF UTILITIES	DEPARTMENT OF PLANNING AND ZONING HOWARD COUNTY, MARYLAND DATE 10/14/98 CHIEF, DEVELOPMENT ENGINEERING DIVISION		

GLW FILE No. 98021



Note
 1. Fire Hydrants will be set in accordance with Howard County Design Manual Vol. II; 'Fire Hydrant Settings' std water detail-W.111.
 2. Plumber to install the 2 private water house connections within the same trench. Provide 1' of cover between the 2 connections and 4 min. cover over top connection. See GDF 22-10 for detail.



DEPARTMENT OF PUBLIC WORKS
 HOWARD COUNTY, MARYLAND
 Robert W. Berger
 CHIEF, BUREAU OF UTILITIES
 DATE: 10-14-98

DEPARTMENT OF PLANNING AND ZONING
 HOWARD COUNTY, MARYLAND
 [Signature]
 CHIEF, DEVELOPMENT ENGINEERING DIVISION
 DATE: 10/14/98

GLW GUTSCHICK LITTLE & WEBER, P.A.
 CIVIL ENGINEERS, LAND SURVEYORS, LAND PLANNERS, LANDSCAPE ARCHITECTS
 3909 NATIONAL DRIVE - SUITE 250 - BURTONSVILLE OFFICE PARK
 BURTONSVILLE, MARYLAND 20886
 TEL: 301-421-4024 BALT: 410-880-1820 DC/VA: 301-989-2524 FAX: 301-421-4186

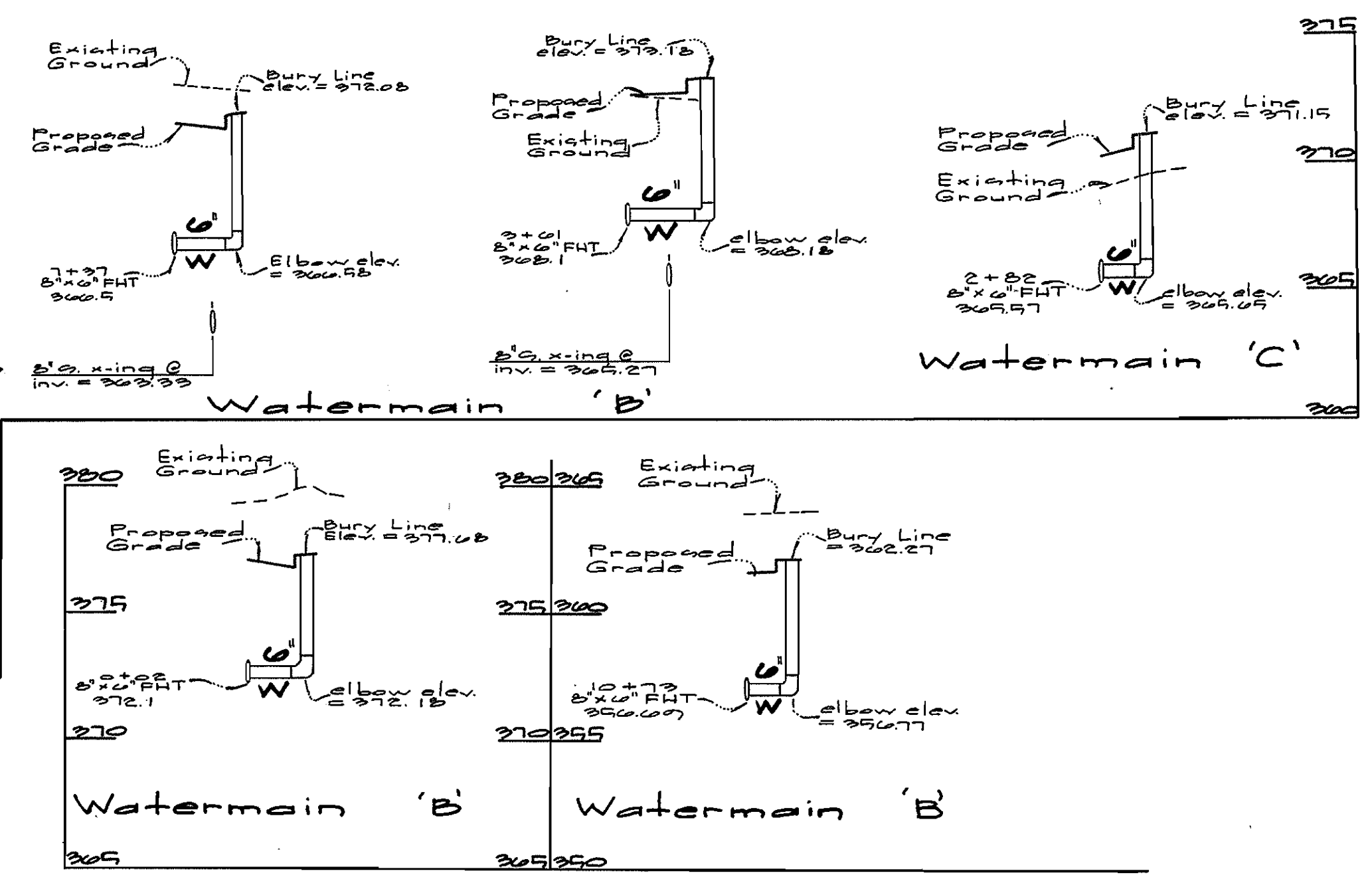
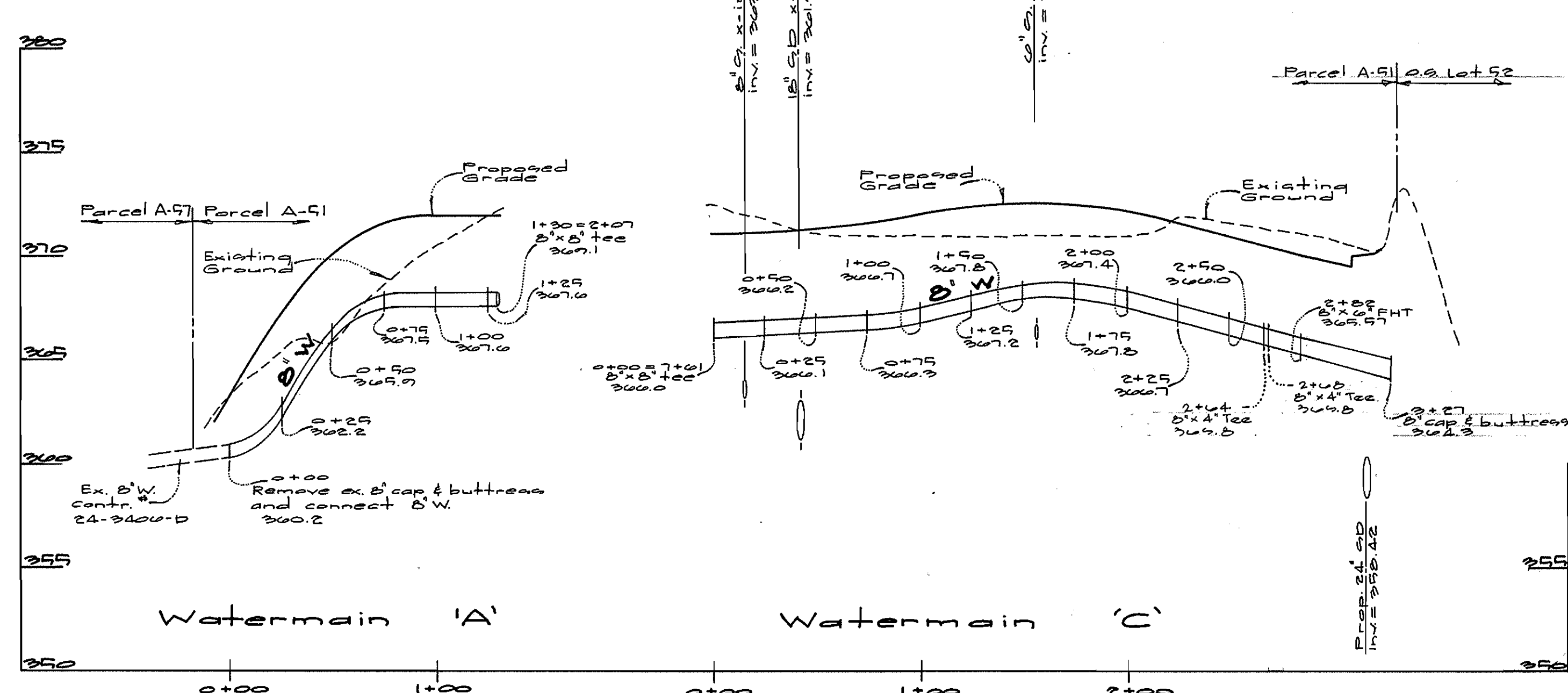
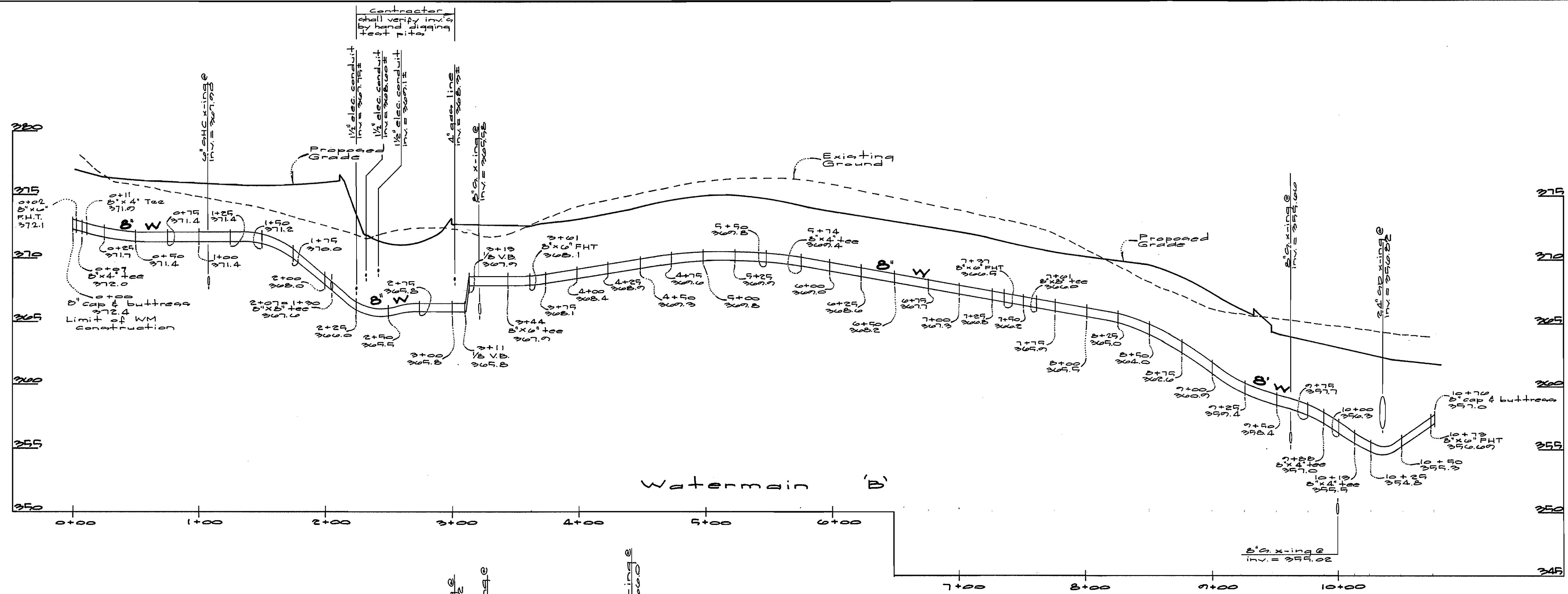
Developer
 Shelter Development LLC
 Suite 300, Park Charles
 218 N. Charles Street
 Baltimore, Md 21201
 (410) 562-0555

DES:	
DRN:	KLP
CHK:	
DATE:	
BY:	NO
REVISION:	
DATE:	

Public Water Plan
 scale: 1" = 50'
 600' SCALE MAP NO. 42 BLOCK NO. 5

Gateway Commerce Center
 Parcel 'A-51'
 Plat No. 11057
 Cont. # 44-3713-D
 Guilford Election District No. 6
 Howard County, Maryland

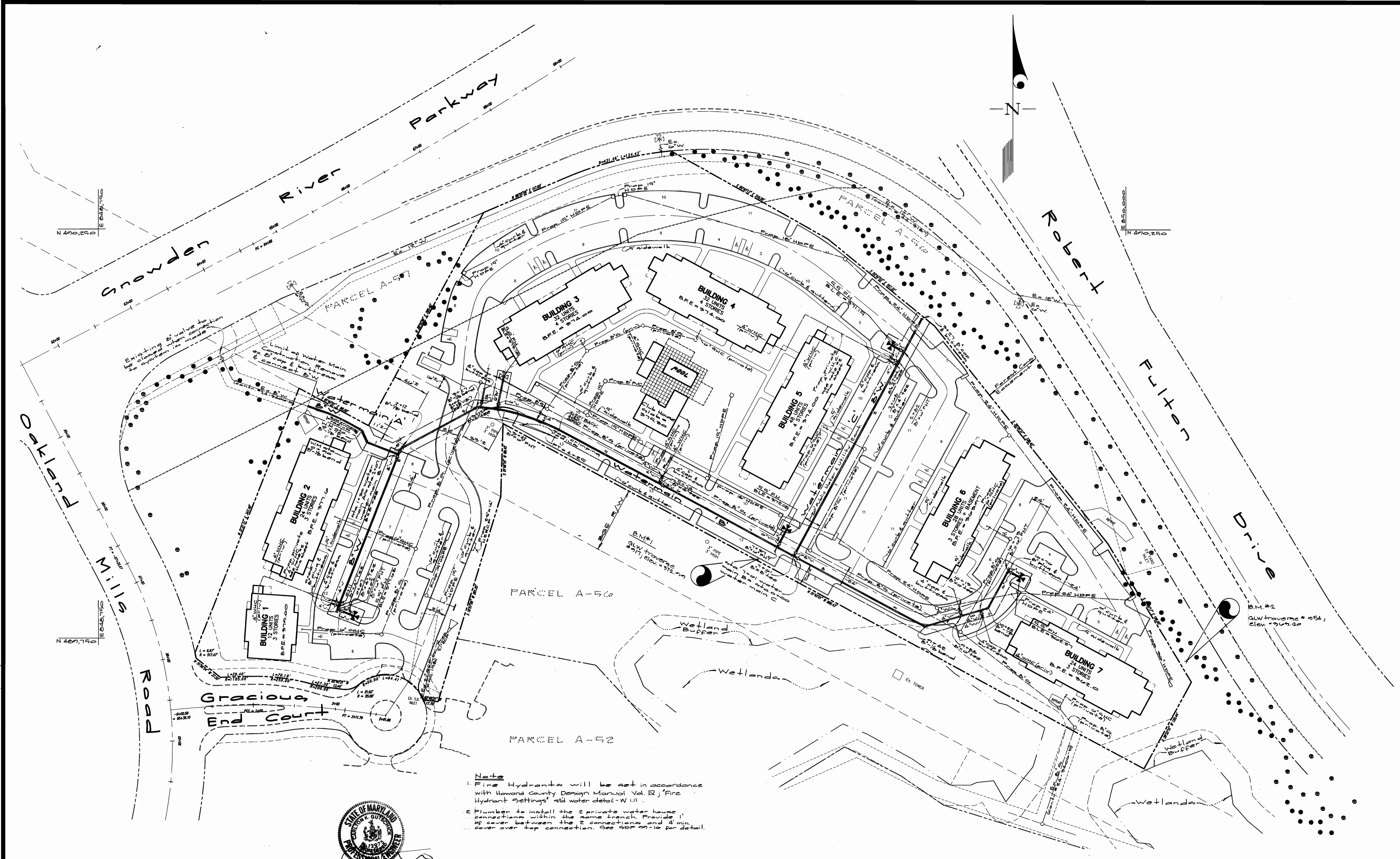
SCALE AS SHOWN
 SHEET 2 OF 3



Handwritten notes:
 10/2/09
 10/2/09



Department of Public Works Howard County, Maryland <i>Robert W. Bennett</i> Chief, Bureau of Utilities	Department of Planning & Zoning Howard County, Maryland <i>[Signature]</i> Chief, Development Engineering Division	GW GUTSCHICK LITTLE & WEBER, P.A. ENGINEERS, PLANNERS, SURVEYORS 3900 NATIONAL DRIVE, SUITE 250 - BURTONSVILLE OFFICE PARK BURTONSVILLE, MD. 20886 (301) 421-4024	Developer Shelter Development LLC Suite 900, Park Charles 210 N. Charles Street Baltimore, Md 21201 (410) 762-0555	DES: DRN: KLP CHK: DATE:	Public Water Profiles scales: 1" = 50' horz. 1" = 5' vert.	Gateway Commerce Center Parcel 'A-51' Plat No. 11257 Cont. # 44-3713-D Guilford Election District No. 6 Howard County, Maryland	SCALE AS SHOWN SHEET 2 OF 2
10-4-98 10/2/09				BY NO. REVISION DATE	600' SCALE MAP NO. 42 BLOCK NO. 5	SHEET 2 OF 2	



Note
 1. Fire Hydrants will be set in accordance with Howard County Design Manual Vol. II, 'Fire Hydrant Settings' and water detail - W.111.
 2. Plumber to install the 2 private water house connections within the same branch. Provide 1" cover between the 2 connections and 4" min. cover over top connection. See SDP 99-16 for detail.



DEPARTMENT OF PUBLIC WORKS
 HOWARD COUNTY, MARYLAND
 Robert [Signature] 10-14-88
 CHIEF, BUREAU OF UTILITIES DATE

DEPARTMENT OF PLANNING AND ZONING
 HOWARD COUNTY, MARYLAND
 [Signature] 10/14/88
 CHIEF, DEVELOPMENT ENGINEERING DIVISION DATE

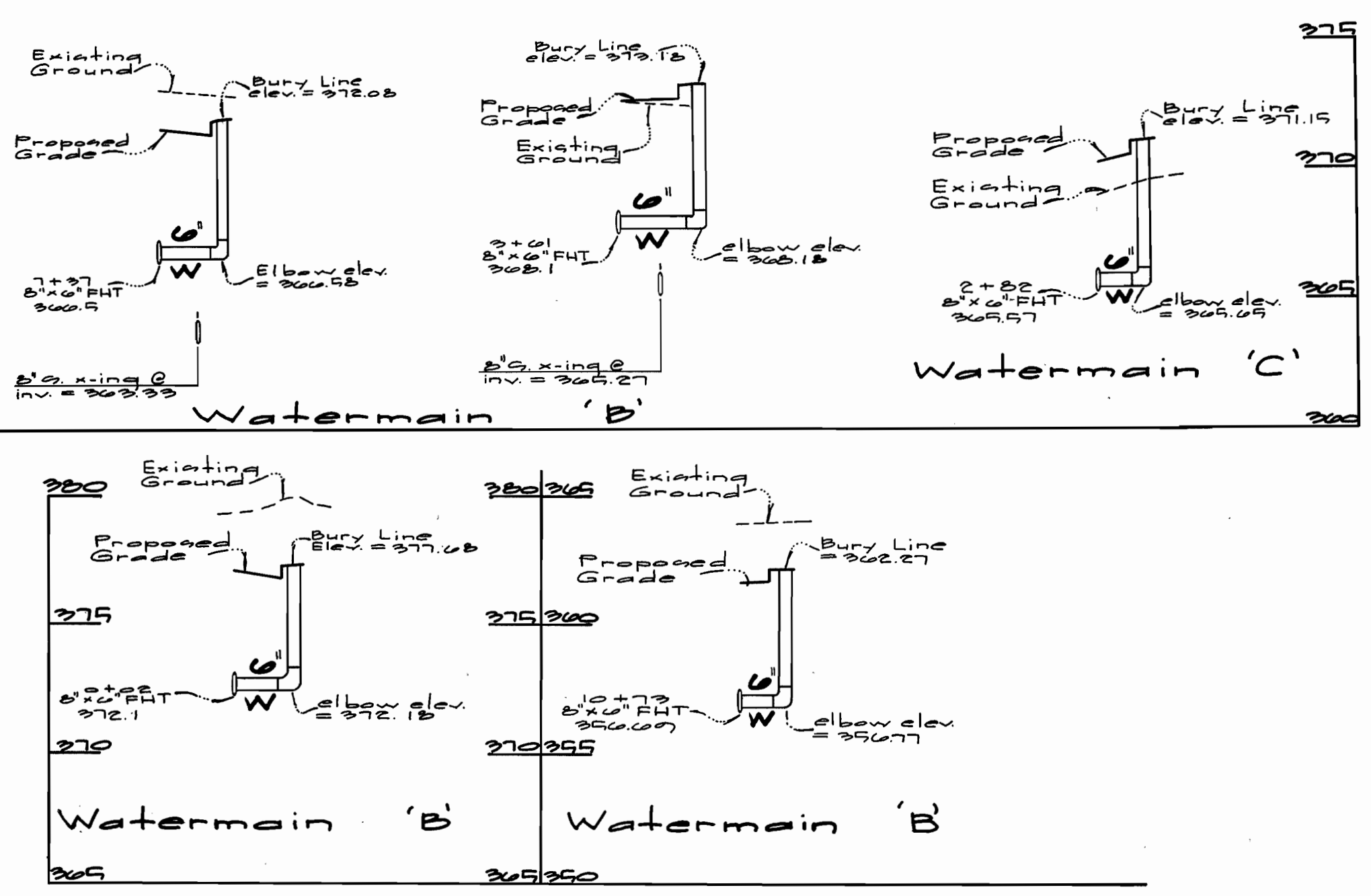
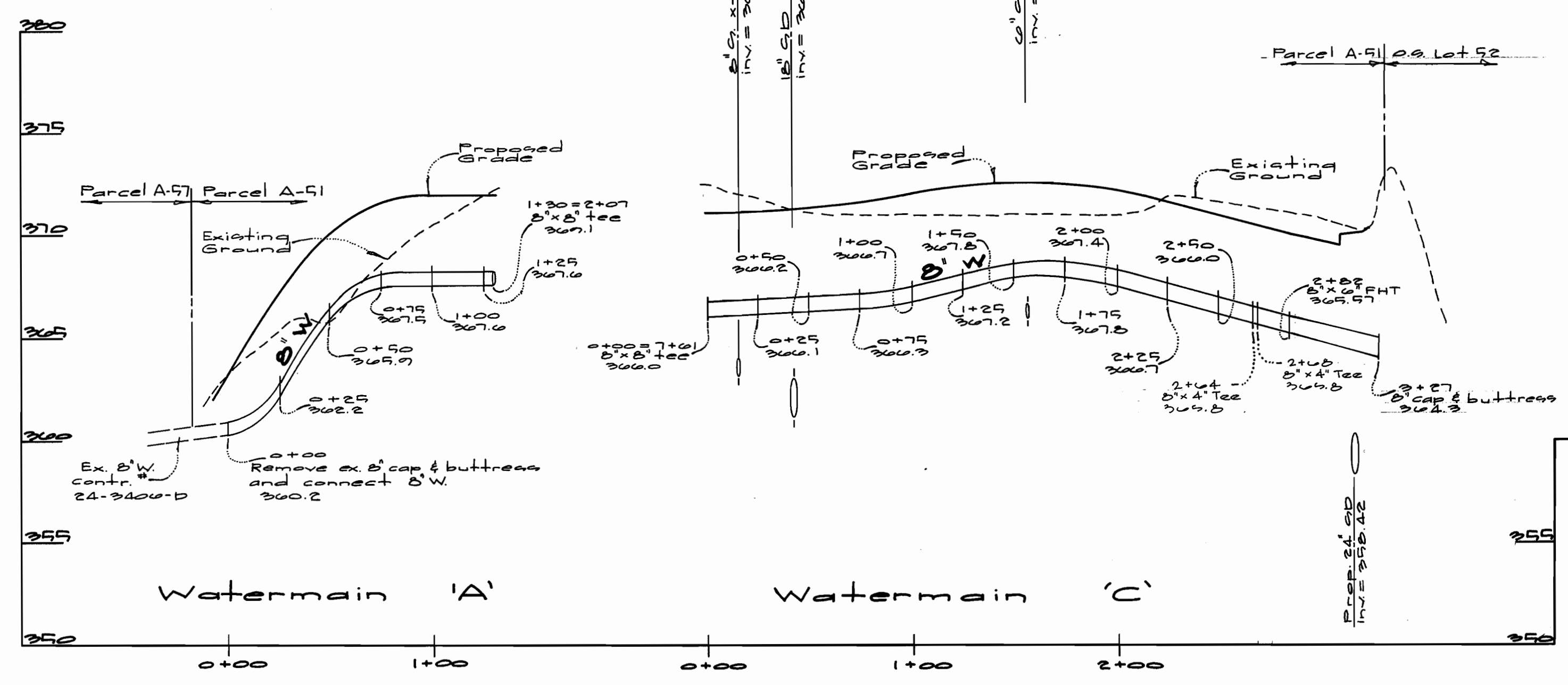
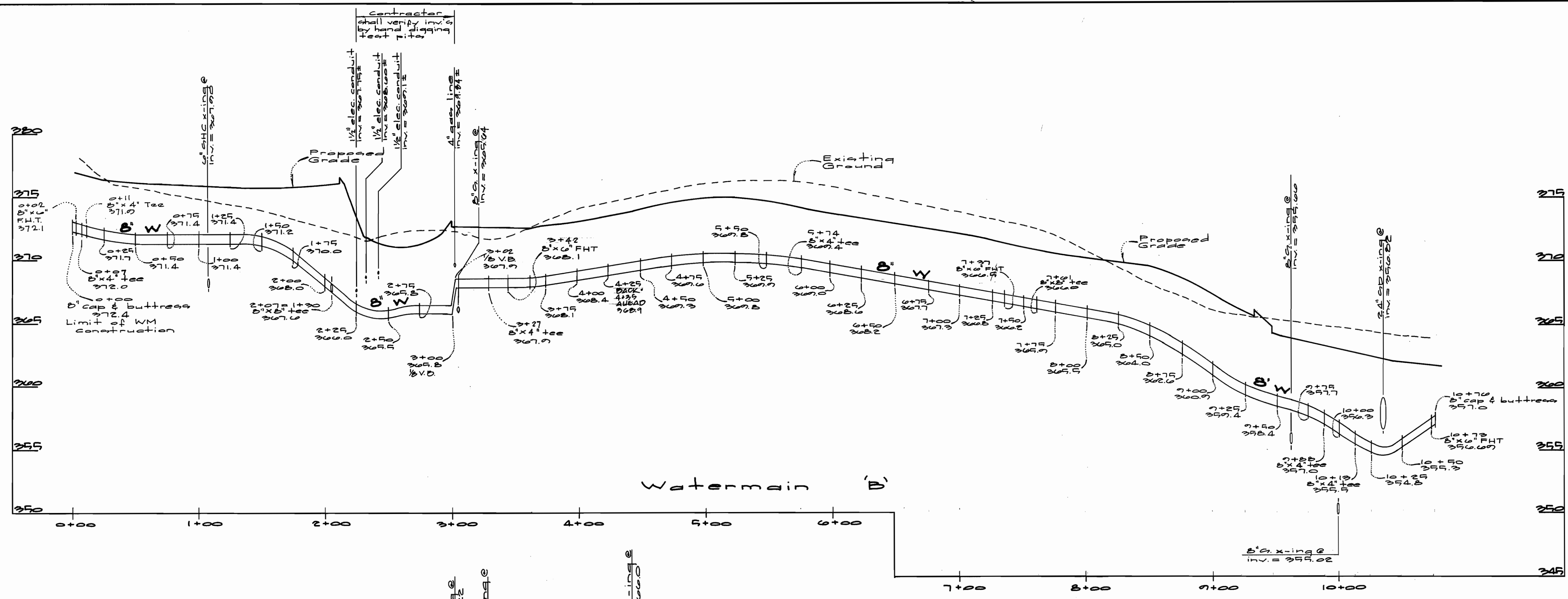
GLW GUTSCHICK LITTLE & WEBER, P.A.
 CIVIL ENGINEERS, LAND SURVEYORS, LAND PLANNERS, LANDSCAPE ARCHITECTS
 3909 NATIONAL DRIVE - SUITE 250 - BURTONSVILLE OFFICE PARK
 BURTONSVILLE, MARYLAND 20886
 TEL: 301-421-4024 BALT: 410-860-1020 DC/VA: 301-980-2524 FAX: 301-421-4186

Developer
 Shelter Development LLC
 Suite 500, Park Charles
 218 N. Charles Street
 Baltimore, MD 21201
 (410) 212-0595

DES:			
DRN:	KLP		
CHK:			
DATE:	BY NO	REVISION	DATE
		D.C. 1 REV. WATERLINE, POOL & POOL SHEDDER	7-16-99

Public Water Plan
 scale: 1" = 50'
 600' SCALE MAP NO. 42 BLOCK NO. 5

Gateway Commerce Center
 Parcel 'A-51'
 Plat No. 11757
 Cont. # 44-3713-D
 Guilford Election District No. 6
 Howard County, Maryland
 SCALE AS SHOWN
 SHEET 2 OF 3



10/12/99



Department of Public Works
Howard County, Maryland

Department of Planning & Zoning
Howard County, Maryland

Robert W. Bennett 10-14-99
Chief, Bureau of Utilities Date

10/12/99
Chief, Development Engineering Division Date

GUTSCHICK LITTLE & WEBER, P.A.
ENGINEERS, PLANNERS, SURVEYORS

3909 NATIONAL DRIVE - SUITE 250 - BURTONSVILLE OFFICE PARK
BURTONSVILLE, MD 20886
1301 421-4024

Developer
Shelter Development
LLC
Suite 500, Park Charles
210 N. Charles Street
Baltimore, Md 21201
(410) 622-0700

DES:	
DRN:	KLP
CHK:	
DATE:	
BY:	B.C.
NO.:	1
REVISION:	REV. WATERLINE PROFILE
DATE:	7-26-99

Public Water Profiles
Scale: 1" = 50' horz.
1" = 5' vert.

600' SCALE MAP NO. 42 BLOCK NO. 5

Gateway Commerce Center
Parcel 'A-51'
Plot No. 11257
Cont. # 44-3713-D

Guilford Election District No. 6
Howard County, Maryland

SCALE AS SHOWN

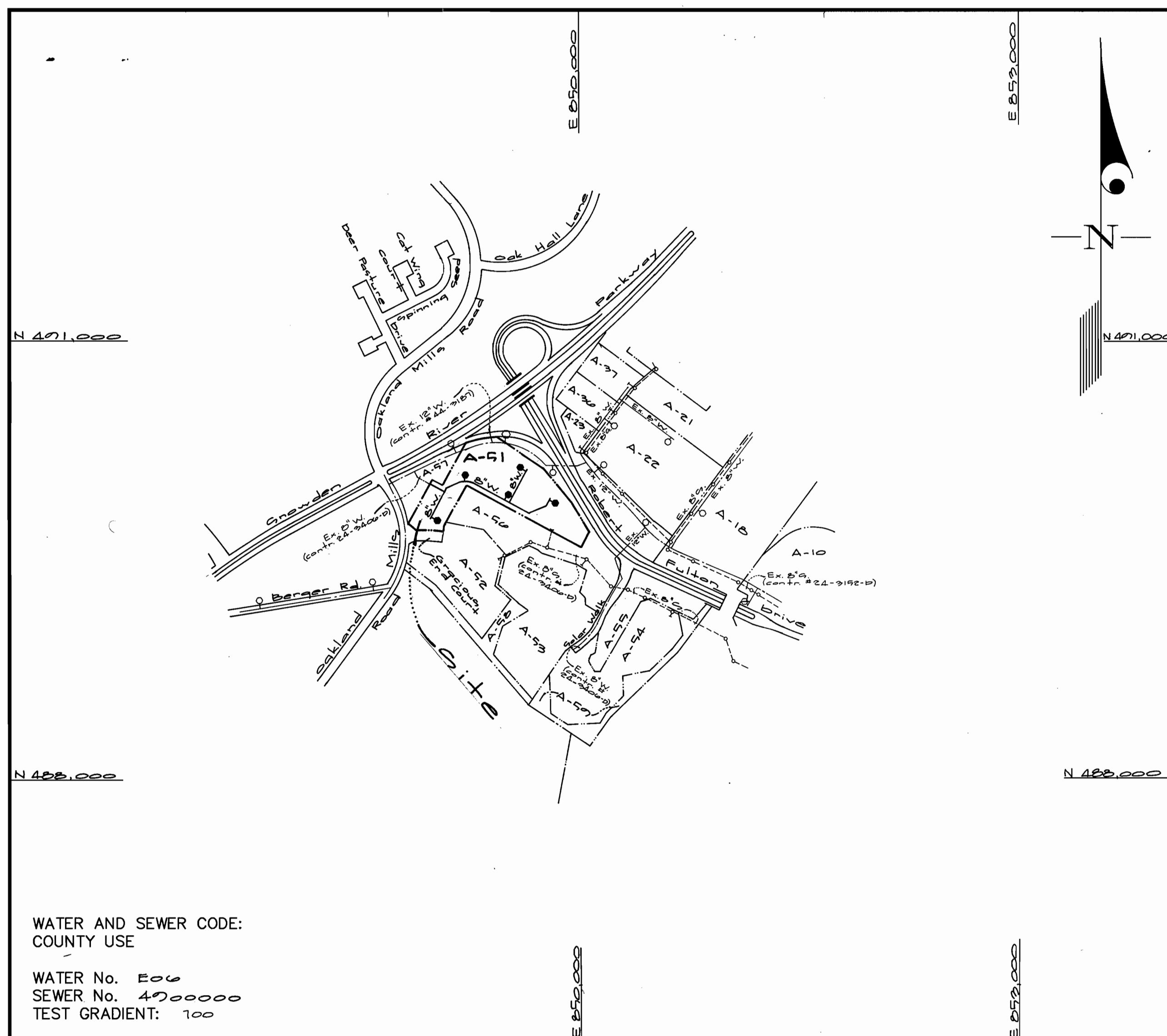
SHEET 2 OF 2

ITEMS	QUANTITIES ESTIMATED	AS-BUILT		
		QUANTITIES	TYPE	MANUFACTURER/SUPPLIER
4" Water	20 LF	—	CL-52	ATLANTIC
6" Water	112 LF	—		
8" Water	1533 LF	—	CL-52	ATLANTIC PIPE
4" V	2 ea	8 EA	—	
6" V	5 ea	3 EA		
6" x 4" tee	2 ea	—		
6" x 6" FHT & V	5 ea	5 EA		
6" x 6" tee	2 ea	—		
Fire Hydrants	5 ea	5 EA	MOELLER	

NAME OF UTILITY CONTRACTOR: _____

SURVEY AND DRAFTING DIV. CHECKBOX: _____
AS-BUILT DATE: 8/24/00

TYPE OF BUILDING	Apartment
NUMBER OF UNITS	7 buildings (202 apartment units & pool)
NUMBER OF S.H.C.'s	—
NUMBER OF W.H.C.'s	2
DRAINAGE AREA	—
TREATMENT PLANT	—



WATER AND SEWER CODE:
COUNTY USE

WATER No. 206
SEWER No. 4000000
TEST GRADIENT: 100

VICINITY MAP
SCALE: 1"=600'

GENERAL NOTES

- PART I
- Approximate location of existing mains are shown. The contractor shall take all necessary precautions to protect existing mains and services and maintain uninterrupted supply. Any damage incurred shall be repaired immediately to the satisfaction of the Engineer at the Contractor's expense.
 - All horizontal controls are based on Maryland State Coordinates [North American Datum 1983 (NAD '83)].
 - All vertical controls are based on U.S.G.S. data.
 - All pipe elevations shown are invert elevations.
 - Clear all utilities by a minimum of 6". Clear all poles by 2'-0" minimum or tunnel as required. The owner has contacted the utility companies and has made arrangements for bracing of poles as shown on the drawings. In the event the contractor's work requires the bracing of additional poles or damages shall be deducted from money owed the contractor. The contractor shall coordinate with the utility companies to schedule the bracing of the poles.
 - For details not shown on the drawings, and for materials and construction methods use Howard County Design Manual, Volume IV, Standard Specifications and Detail for Construction (Latest Edition). The contractor shall have a copy of Volume IV on the job.
 - Where test pits have been made on existing utilities, they are noted by the symbol [square with cross] at the location of the test pit. A note or notes containing the results of the test pit or pits is included on the drawings. Existing utilities in the vicinity of the proposed work for which test pits have not been dug shall be located by the contractor two weeks in advance of construction operations at his own expense.
 - Contractor shall notify the following utility companies or agencies at least (5) working days before starting work shown on these plans:

State Highway Administration	531-5533
BGE Contractor Services	850-4620
BGE Under Ground Damage Control	787-9088
Miss Utility	1-800-257-7777
Colonial Pipeline Co.	795-1390
Howard County Department of Public Works Bureau of Utilities	313-4900
 - Trees and shrubs are to be protected from damage to maximum extent. Trees and shrubs located within the construction strip are not to be removed or damaged by the contractor.
 - Contractor shall remove trees, stumps and roots along line of excavation. Payment for such removal shall be included in the unit price bid for construction of the main.
 - The contractor shall notify the Bureau of Highways, Howard County, at (410) 313-2450 at least five (5) working days before any open cut of any County road or boring/jacking operation on County roads for laying water/sewer mains or house connections. The approval of these drawings will constitute compliance with DPW requirement per Section 18.114(a) of the Howard County Code.

PART II - WATER

- All water mains to be D.I.P. Class 52 unless otherwise noted.
- Tops of all water mains to have a minimum of 3'-1/2' cover unless otherwise noted.
- Valves adjacent to tees shall be strapped to tees.
- All fittings shall be buttressed or anchored with concrete in accordance with the Standard Details unless otherwise provided for on the drawings.
- Fire hydrants shall be set to the bury line elevations shown on the drawings. All fire hydrants shall be restrained and buttressed with concrete in accordance with the Standard Details. Soil around the fire hydrant shall be compacted in accordance with Section 1000 and 1005 of the Standard Specifications.
- The contractor shall not operate any water main valves on the existing water system.
- All water house connections shall be for inside meter setting unless otherwise noted on plans or in specifications.
- For sprinkler system for all townhomes or multi-family dwelling units should have a minimum of 1' connection with a 3/4" meter.

PART III - SEWER

- All sewer mains shall be DIP and P.V.C. unless otherwise noted.
- All manholes shall be 4' - 0" inside diameter unless otherwise noted.
- Force mains shall be D.I.P. only.
- Manholes shown with 12" and 16" walls are for brick manholes only.
- Manholes designated W.T. in plan and profile shall have watertight frame and covers, Standard Detail G5.52. Where watertight frame and cover is used, set top of frame 1'-6" above finished grade unless otherwise noted on drawings.
- House(s) with the symbol "C.N.S." indicates that cellar cannot be served.

CONTRACT No. **44-3713 D**
Gateway Commerce Center
Parcel 'A-51'
 HOWARD COUNTY, MARYLAND
 DEPARTMENT OF PUBLIC WORKS

Sediment Control Measures will be implemented in accordance with Section 219 of the Specifications & with Site Development Plan "SOP 22-14"; Drawings for Sediment & Erosion Control.

REVIEWED FOR HOWARD SOIL CONSERVATION DISTRICT AND MEETS TECHNICAL REQUIREMENT.

John K. Robertson 10/21/98
 SIGNATURE DATE
 U.S.D.A. NATURAL RESOURCES CONSERVATION SERVICE

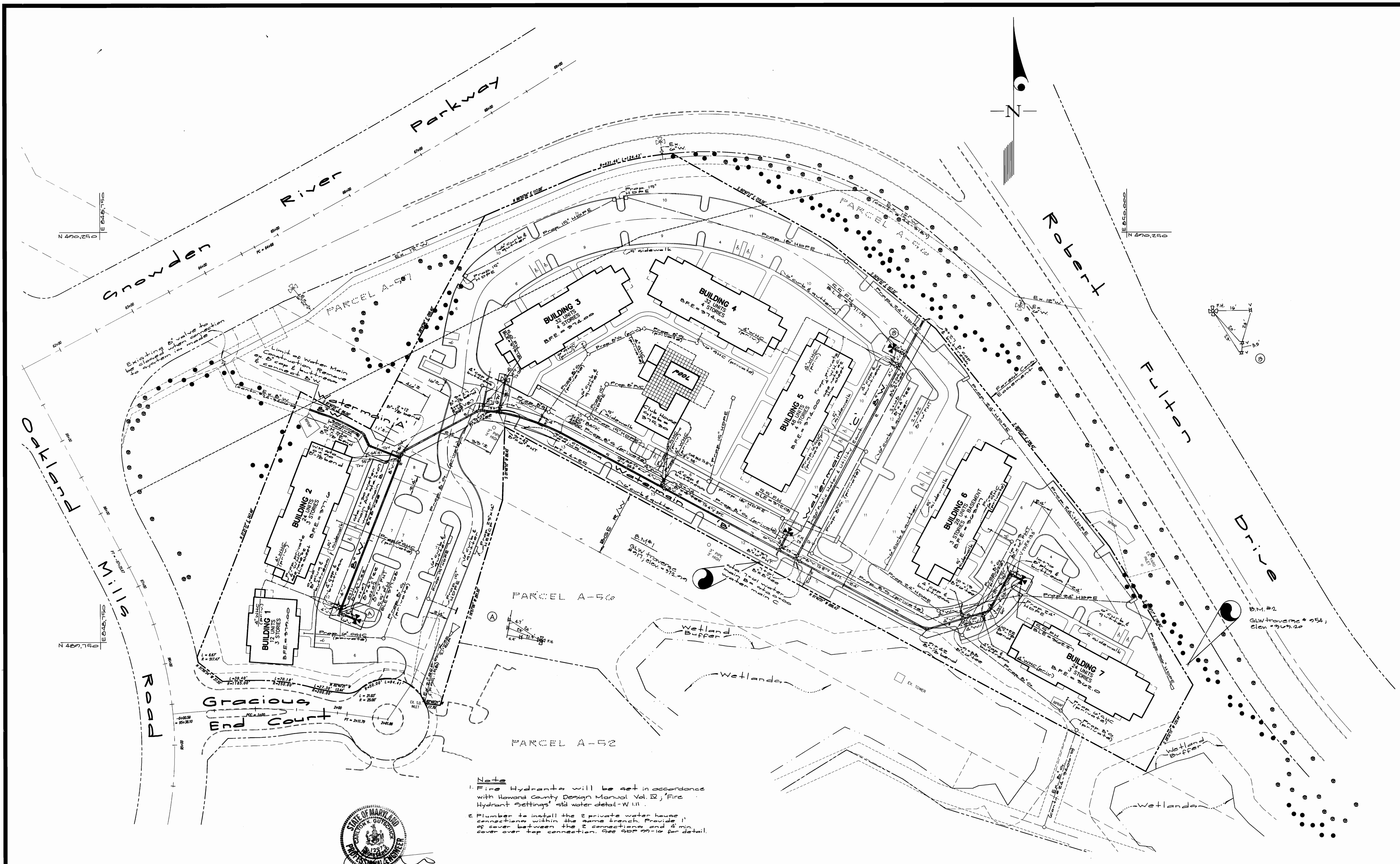
THIS DEVELOPMENT PLAN IS APPROVED FOR SOIL EROSION AND SEDIMENT CONTROL BY THE HOWARD SOIL CONSERVATION DISTRICT.

APPROVED: *John K. Robertson* 10/21/98
 SIGNATURE DATE
 HOWARD S.C.D.



DEPARTMENT OF PUBLIC WORKS HOWARD COUNTY, MARYLAND <i>Robert Bainger</i> 10-14-98 CHIEF, BUREAU OF UTILITIES DATE	DEPARTMENT OF PLANNING AND ZONING HOWARD COUNTY, MARYLAND _____ 10/24/00 CHIEF, DEVELOPMENT ENGINEERING DIVISION DATE	GLW GUTSCHICK LITTLE & WEBER, P.A. CIVIL ENGINEERS, SURVEYORS, PLANNERS, LANDSCAPE ARCHITECTS 3909 NATIONAL DRIVE - SUITE 250 - BURTONSVILLE OFFICE PARK - BURTONSVILLE, MARYLAND 20866 TEL: (410) 880-1820 ~ FAX: (301) 421-4186	Developer Shelter Development LLC Suite 500, Park Charles 210 N. Charles Street Baltimore, Md 21201 (410) 962-0909	DES: BEV DRN: KLF CHK: BEV DATE: 10/22/00 BY: NO	Public Water Extension Cover Sheet K&T 1 AS-BUILT CONDITIONS ADDED 10/18/00 REVISION TO PLAN DATE 600' SCALE MAP NO. 42 BLOCK NO. 5	Gateway Commerce Center Parcel 'A-51' Plat No. 11057 Cont. # 44-3713-D Guilford Election District No. 6, Howard County, Maryland	SCALE AS SHOWN SHEET 1 OF 3
--	--	---	---	--	--	---	------------------------------------

GLW FILE No. 92021



Notes

1. Fire Hydrants will be set in accordance with Howard County Design Manual Vol. II, 'Fire Hydrant Settings' and water detail-W 111.
2. Plumber to install the 2 private water house connections within the same trench. Provide 1' of cover between the 2 connections and 4 min. cover over top connection. See SPP 22-16 for detail.



DEPARTMENT OF PUBLIC WORKS
HOWARD COUNTY, MARYLAND

Robert W. Deinger
CHIEF, BUREAU OF UTILITIES

DEPARTMENT OF PLANNING AND ZONING
HOWARD COUNTY, MARYLAND

[Signature]
CHIEF, DEVELOPMENT ENGINEERING DIVISION

GLW GUTSCHICK LITTLE & WEBER, P.A.
CIVIL ENGINEERS, LAND SURVEYORS, LAND PLANNERS, LANDSCAPE ARCHITECTS
3909 NATIONAL DRIVE - SUITE 250 - BURTONTOWN, MARYLAND 20866
TEL: 301-421-4024 BAL: 410-880-1820 DC/VA: 301-988-2524 FAX: 301-421-4186

Developer
Shelter Development LLC
Suite 500 Park Charles
218 N. Charles Street
Baltimore, Md 21201
(410) 962-0500

DES:			
DRN:	KLM		
CHK:	K.E.I.	2	AS-BUILT CONDITIONS ADDED TO PLAN 10/18/00
DATE:	B.G.	1	REV. WATERLINE, POOL & POOL SHELTER 7-26-99
BY:	NO	REVISION	DATE

Public Water Plan
scale: 1" = 50'

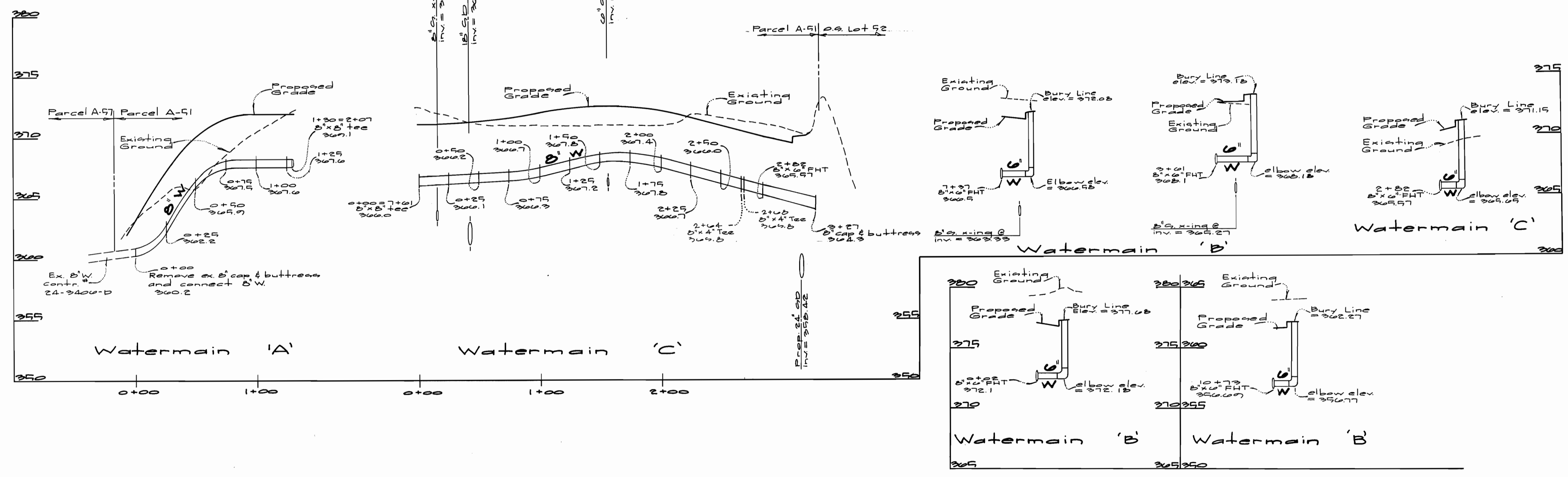
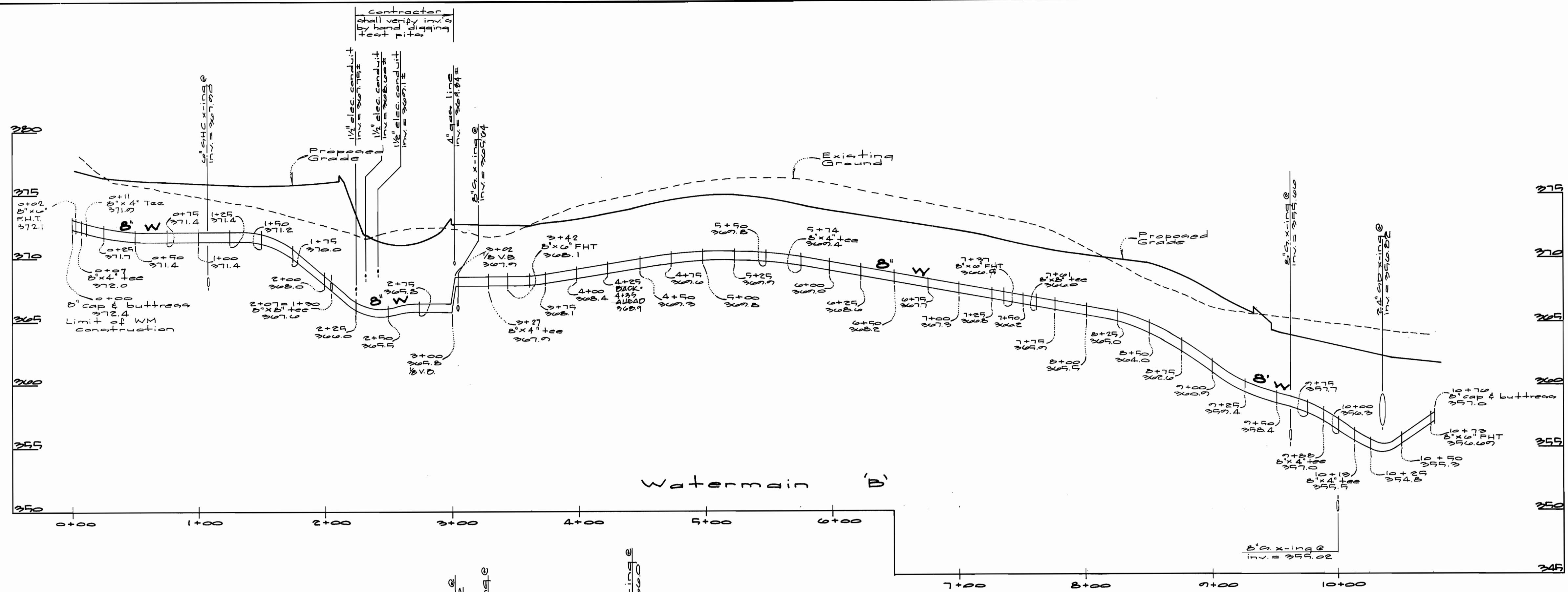
600' SCALE MAP NO. 42 BLOCK NO. 5

Gateway Commerce Center
Parcel 'A-51'
Plat No. 11957
Cont: # 44-3713-D

SCALE AS SHOWN

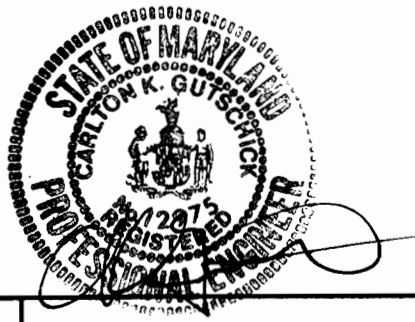
SHEET 2 OF 3

Guilford Election District No. 6
Howard County, Maryland



Department of Public Works
Howard County, Maryland

Department of Planning & Zoning
Howard County, Maryland



GUTSCHICK LITTLE & WEBER, P.A.
ENGINEERS, PLANNERS, SURVEYORS
3909 NATIONAL DRIVE, SUITE 250 - BURTNSVILLE OFFICE PARK
BURTNSVILLE, MD 20886
(301) 421-4024

Developer
Shelter Development LLC
Suite 900 Park Charles
210 N. Charles Street
Baltimore, Md 21201
(410) 262-0595

DES:	
DRN:	KLP
CHK:	
DATE:	7-26-99
BY:	B.C. 1
NO.:	REV WATERLINE PROFILE
REVISION:	

Public Water Profiles
scales: 1" = 50' horz.
1" = 5' vert.

Gateway Commerce Center
Parcel 'A-51'
Plat No. 11057
Cont. # 44-3713-D
Guilford Election District No. 6
Howard County, Maryland

SCALE AS SHOWN
SHEET 2 OF 2