

GENERAL NOTES

PART I - GENERAL

1. Approximate location of existing mains are shown. The contractor shall take all necessary precautions to protect existing mains and services and maintain uninterrupted supply. Any damage incurred shall be repaired immediately to the satisfaction of the Engineer at the Contractor's expense.
2. All horizontal controls are based on Maryland State Coordinates. [North American Datum of 1983 (NAD '83)].
3. All vertical controls are based on U.S.G.S. data.
4. All pipe elevations shown are invert elevations.
5. Clear all utilities by a minimum of 6". Clear all poles by 2'-0" minimum or tunnel as required. The owner has contacted the utility companies and has made arrangements for bracing of poles as shown on the drawings. In the event that the contractor's work requires the bracing of additional poles, any cost incurred by the owner for bracing of additional poles or damages shall be deducted from money owed the contractor. The contractor shall coordinate with the utility companies to schedule the bracing of the poles.
6. For details not shown on the drawings, and for materials and construction methods, use Howard County Design Manual, Volume IV, Standard Specifications and Details for Construction (Latest Edition). The contractor shall have a copy of Volume IV on the job.
7. Where test pits have been made on existing utilities, they are noted by the symbol at the location of the test pit. A note or notes containing the results of the test pit or pits is included on the drawings. Existing utilities in the vicinity of the proposed work for which test pits have not been dug shall be located by the contractor two weeks in advance of construction operations at his own expense.
8. Contractor shall notify the following utility companies or agencies at least five working days before starting work shown on these plans:

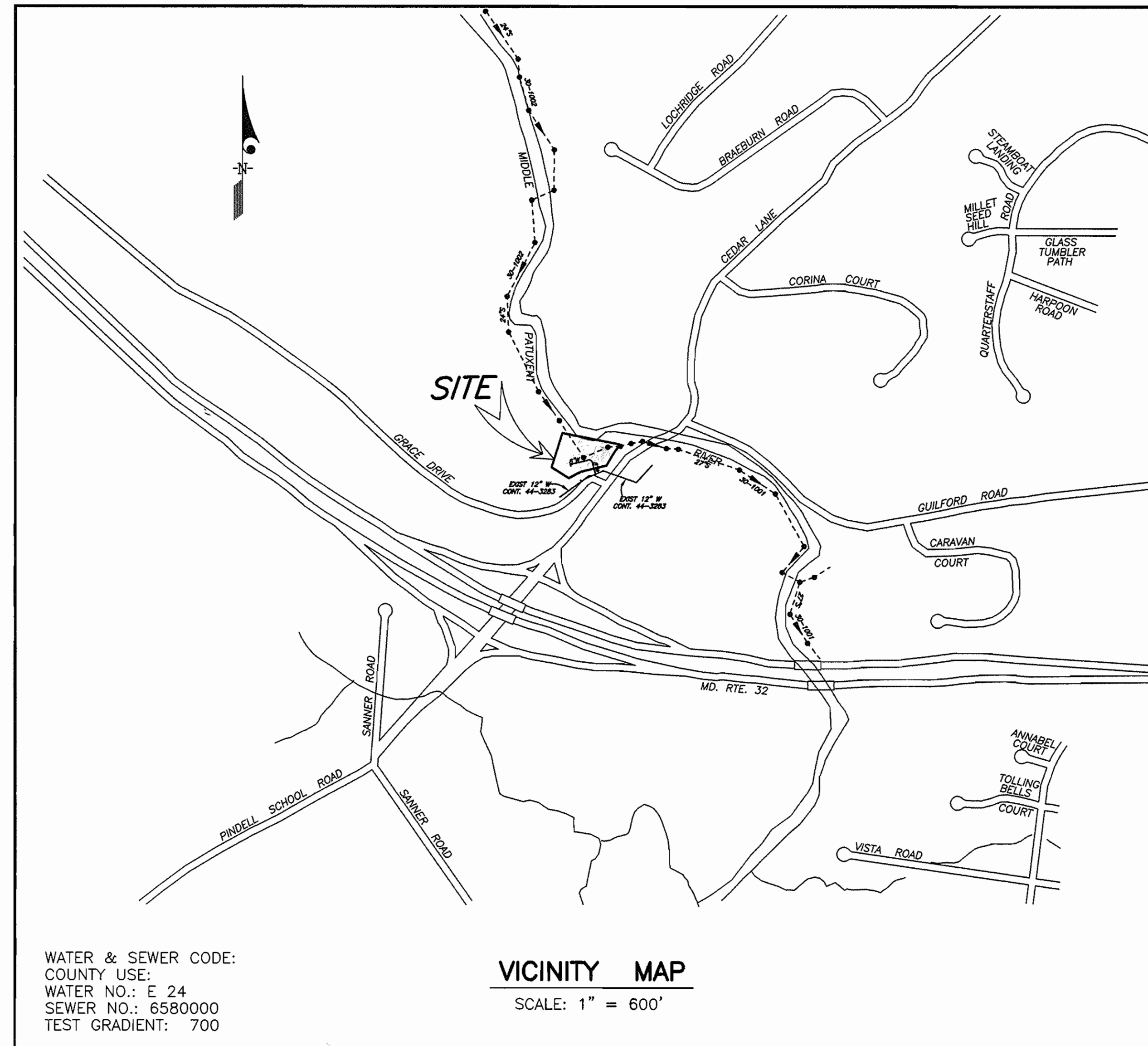
State Highway Administration	531-5533
BG&E Co. Contractor Services	850-4620
BG&E Co. Under Ground Damage Control	787-9068
Miss Utility	1-800-257-7777
Colonial Pipeline Co.	795-1390
Howard County Department of Public Works Bureau of Utilities	313-4900
9. Trees and shrubs are to be protected from damage to maximum extent. Trees and shrubs located within the construction strip are not to be removed or damaged by the contractor.
10. Contractor shall remove trees, stumps and roots along line of excavation. Payment for such removal shall be included in the unit price bid for construction of the main.
11. The contractor shall notify the Bureau of Highways, Howard County, at (410) 313-2450 at least five working days before any open cut of any County road or boring/jacking operation in County roads for laying water/sewer mains or house connections. The approval of these drawings will constitute compliance with DPW requirements per Section 18.114(a) of the Howard County Code.

PART II - WATER

1. All water mains to be D.I.P. Class 52 unless otherwise noted.
2. Tops of all water mains to have a minimum of 3-1/2' cover unless otherwise noted.
3. Valves adjacent to tees shall be strapped to tees.
4. All fittings shall be buttressed or anchored with concrete in accordance with the Standard Details unless otherwise provided for on the drawings.
5. Fire hydrants shall be set to the bury line elevations shown of the drawings. All fire hydrants shall be restrained and buttressed with concrete in accordance with Standard Details. Soil around the fire hydrant shall be compacted in accordance with Sections 1000 and 1005 of the Standard Specifications.
6. The contractor shall not operate any water main valves on the existing water system.
7. All water house connections shall be for inside meter setting unless otherwise noted on plans or in specifications.
8. For sprinkler system for all townhomes or multi-family dwelling units shall have a minimum of 1" connection with a 3/4" meter.

PART III - SEWER

1. All sewer mains to be D.I.P. or P.V.C. unless otherwise noted.
2. All manholes shall be 4'-0" inside diameter unless otherwise noted.
3. Force mains shall be D.I.P. only.
4. Manholes shown with 12" and 16" walls are for brick manholes only.
5. Manholes designated W.T. in plan and profile shall have watertight frame and covers, Standard Detail G5.52. Where watertight manhole frame and cover is used, set top of frame 1" - 6" above finished grade unless otherwise noted on the drawings.
6. House(s) with the symbol "C.N.S." indicates that cellar cannot be served.



WATER & SEWER CODE:
COUNTY USE:
WATER NO.: E 24
SEWER NO.: 6580000
TEST GRADIENT: 700

TYPE OF BUILDING	COMMERCIAL TOWNHOUSES
NO. OF LOTS/PARCELS	1
NO. OF WATER HOUSE CONNECTIONS	2
NO. OF SEWER HOUSE CONNECTIONS	1
DRAINAGE AREA	MIDDLE PATUXENT
TREATMENT PLANT	LITTLE PATUXENT WATER RECLAMATION PLANT, SAVAGE, HOWARD COUNTY, MD.

SEDIMENT CONTROL MEASURES WILL BE IMPLEMENTED IN ACCORDANCE WITH SECTION 219 OF THE SPECIFICATIONS AND WITH SITE DEVELOPMENT PLAN SDP-98-92; DRAWING , SEDIMENT AND EROSION CONTROL.

REVIEWED FOR HOWARD SOIL CONSERVATION DISTRICT AND MEETS TECHNICAL REQUIREMENTS.

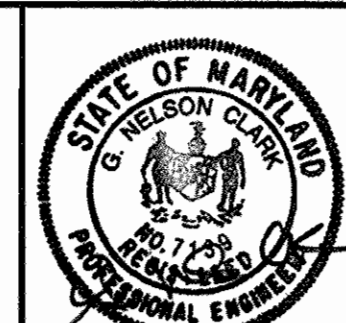
SIGNATURE _____ DATE _____
U. S. SOIL CONSERVATION SERVICE
THIS DEVELOPMENT PLAN IS APPROVED FOR SOIL EROSION AND SEDIMENT CONTROL BY THE HOWARD SOIL CONSERVATION DISTRICT.
APPROVED:
HOWARD S. C. D. _____ DATE _____

QUANTITIES				
ITEMS	QUANTITIES ESTIMATED	AS-BUILT		
		QUANTITIES	TYPE	MANUFACTURER/SUPPLIER
8"W	247 LF			
4" WHC	26 LF			
FH & VALVE	1 EA			
12"x 8" TS & V	1 EA			
6"S	10 EA			
4"V	2 EA			
NAME OF UTILITY CONTRACTOR:				
SURVEY AND DRAFTING DIVISION AS-BUILT DATE:				

DEPARTMENT OF PUBLIC WORKS
HOWARD COUNTY, MARYLAND
5-22-98
CHIEF, BUREAU OF UTILITIES

DEPARTMENT OF PLANNING & ZONING
HOWARD COUNTY, MARYLAND
5/29/98
CHIEF, DEVELOPMENT ENGINEERING DIVISION

CLARK • FINEFROCK & SACKETT, INC.
ENGINEERS • PLANNERS • SURVEYORS
7135 MINSTREL WAY COLUMBIA, MD 21045
(410) 381-7500 BALT. (301) 621-8100 WASH.



DES: CCM				
DRN: BLP				
CHK: CCM				
DATE: MAY 1998	BY	NO.	REVISION	DATE

TITLE SHEET
600' SCALE MAP NO. 35 BLOCK NO. 21

GRACE PROPERTY L.L.P.
LIBER 3778 FOLIO 584
8 COMMERCIAL TOWNHOUSES
5TH ELECTION DISTRICT
CONTRACT No. 34-3683-D

SCALE:
AS SHOWN
SHEET
1 OF 2

GENERAL NOTES

PART I - GENERAL

1. Approximate location of existing mains are shown. The contractor shall take all necessary precautions to protect existing mains and services and maintain uninterrupted supply. Any damage incurred shall be repaired immediately to the satisfaction of the Engineer at the Contractor's expense.
2. All horizontal controls are based on Maryland State Coordinates. [North American Datum of 1983 (NAD '83)].
3. All vertical controls are based on U.S.G.S. data.
4. All pipe elevations shown are invert elevations.
5. Clear all utilities by a minimum of 6". Clear all poles by 2'-0" minimum or tunnel as required. The owner has contacted the utility companies and has made arrangements for bracing of poles as shown on the drawings. In the event that the contractor's work requires the bracing of additional poles, any cost incurred by the owner for bracing of additional poles or damages shall be deducted from money owed the contractor. The contractor shall coordinate with the utility companies to schedule the bracing of the poles.
6. For details not shown on the drawings, and for materials and construction methods, use Howard County Design Manual, Volume IV, Standard Specifications and Details for Construction (Latest Edition). The contractor shall have a copy of Volume IV on the job.
7. Where test pits have been made on existing utilities, they are noted by the symbol at the location of the test pit. A note or notes containing the results of the test pit or pits is included on the drawings. Existing utilities in the vicinity of the proposed work for which test pits have not been dug shall be located by the contractor two weeks in advance of construction operations at his own expense.
8. Contractor shall notify the following utility companies or agencies at least five working days before starting work shown on these plans:

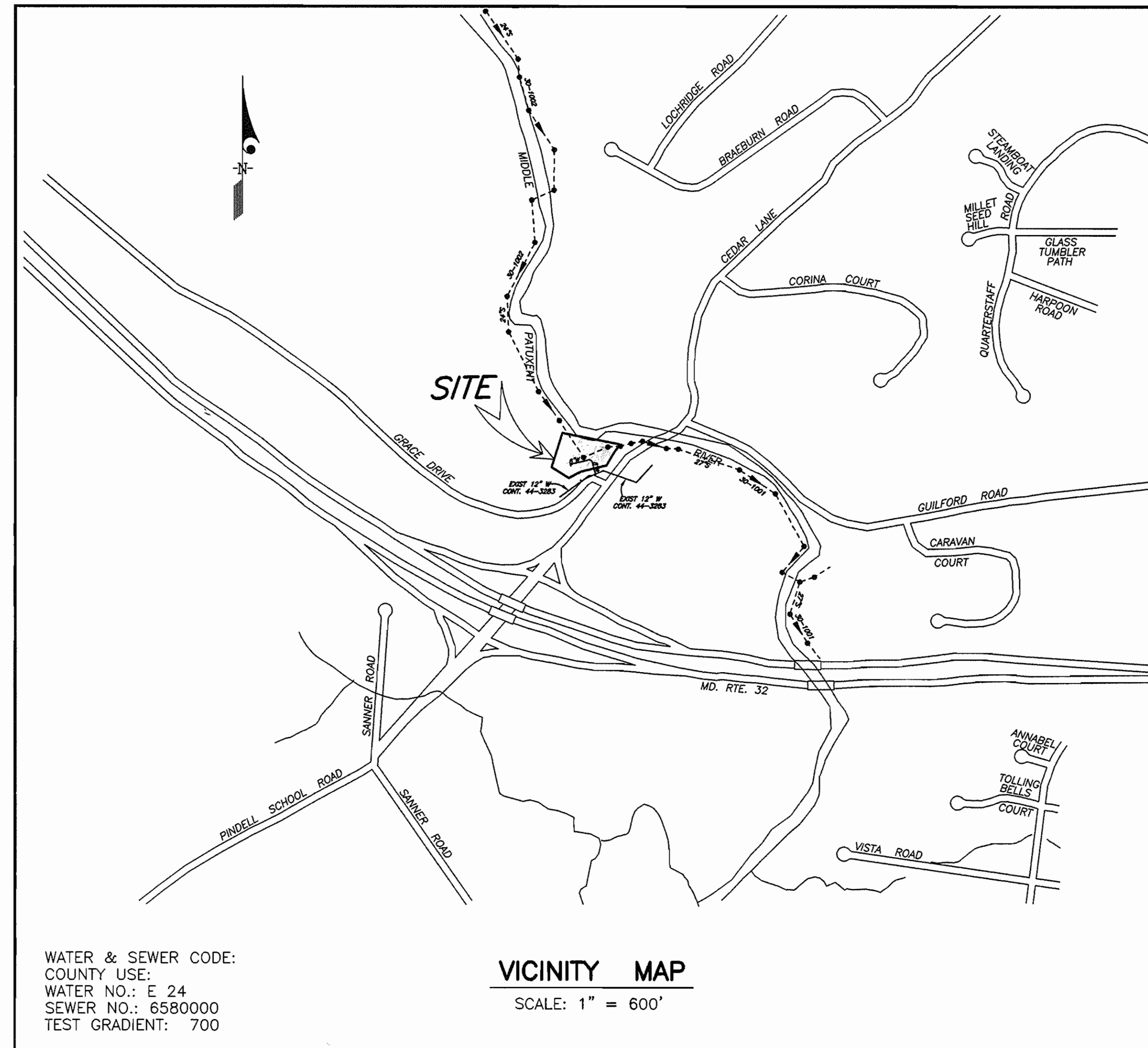
State Highway Administration	531-5533
BG&E Co. Contractor Services	850-4620
BG&E Co. Under Ground Damage Control	787-9068
Miss Utility	1-800-257-7777
Colonial Pipeline Co.	795-1390
Howard County Department of Public Works Bureau of Utilities	313-4900
9. Trees and shrubs are to be protected from damage to maximum extent. Trees and shrubs located within the construction strip are not to be removed or damaged by the contractor.
10. Contractor shall remove trees, stumps and roots along line of excavation. Payment for such removal shall be included in the unit price bid for construction of the main.
11. The contractor shall notify the Bureau of Highways, Howard County, at (410) 313-2450 at least five working days before any open cut of any County road or boring/jacking operation in County roads for laying water/sewer mains or house connections. The approval of these drawings will constitute compliance with DPW requirements per Section 18.114(a) of the Howard County Code.

PART II - WATER

1. All water mains to be D.I.P. Class 52 unless otherwise noted.
2. Tops of all water mains to have a minimum of 3-1/2' cover unless otherwise noted.
3. Valves adjacent to tees shall be strapped to tees.
4. All fittings shall be buttressed or anchored with concrete in accordance with the Standard Details unless otherwise provided for on the drawings.
5. Fire hydrants shall be set to the bury line elevations shown of the drawings. All fire hydrants shall be restrained and buttressed with concrete in accordance with Standard Details. Soil around the fire hydrant shall be compacted in accordance with Sections 1000 and 1005 of the Standard Specifications.
6. The contractor shall not operate any water main valves on the existing water system.
7. All water house connections shall be for inside meter setting unless otherwise noted on plans or in specifications.
8. For sprinkler system for all townhomes or multi-family dwelling units shall have a minimum of 1" connection with a 3/4" meter.

PART III - SEWER

1. All sewer mains to be D.I.P. or P.V.C. unless otherwise noted.
2. All manholes shall be 4'-0" inside diameter unless otherwise noted.
3. Force mains shall be D.I.P. only.
4. Manholes shown with 12" and 16" walls are for brick manholes only.
5. Manholes designated W.T. in plan and profile shall have watertight frame and covers, Standard Detail G5.52. Where watertight manhole frame and cover is used, set top of frame 1" - 6" above finished grade unless otherwise noted on the drawings.
6. House(s) with the symbol "C.N.S." indicates that cellar cannot be served.



WATER & SEWER CODE:
COUNTY USE:
WATER NO.: E 24
SEWER NO.: 6580000
TEST GRADIENT: 700

VICINITY MAP
SCALE: 1" = 600'

TYPE OF BUILDING	COMMERCIAL TOWNHOUSES
NO. OF LOTS/PARCELS	1
NO. OF WATER HOUSE CONNECTIONS	2
NO. OF SEWER HOUSE CONNECTIONS	1
DRAINAGE AREA	MIDDLE PATUXENT
TREATMENT PLANT	LITTLE PATUXENT WATER RECLAMATION PLANT, SAVAGE, HOWARD COUNTY, MD.

SEDIMENT CONTROL MEASURES WILL BE IMPLEMENTED IN ACCORDANCE WITH SECTION 219 OF THE SPECIFICATIONS AND WITH SITE DEVELOPMENT PLAN SDP-98-92; DRAWING , SEDIMENT AND EROSION CONTROL.

REVIEWED FOR HOWARD SOIL CONSERVATION DISTRICT AND MEETS TECHNICAL REQUIREMENTS.

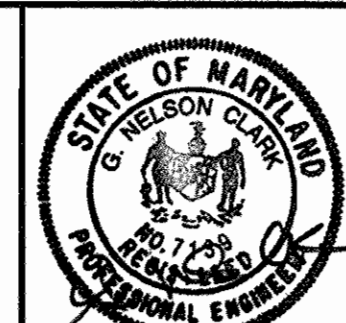
SIGNATURE _____ DATE _____
U. S. SOIL CONSERVATION SERVICE
THIS DEVELOPMENT PLAN IS APPROVED FOR SOIL EROSION AND SEDIMENT CONTROL BY THE HOWARD SOIL CONSERVATION DISTRICT.
APPROVED:
HOWARD S. C. D. _____ DATE _____

QUANTITIES				
ITEMS	QUANTITIES ESTIMATED	AS-BUILT		
		QUANTITIES	TYPE	MANUFACTURER/SUPPLIER
8"W	247 LF			
4" WHC	26 LF			
FH & VALVE	1 EA			
12"x 8" TS & V	1 EA			
6"S	10 EA			
4"V	2 EA			
NAME OF UTILITY CONTRACTOR:				
SURVEY AND DRAFTING DIVISION AS-BUILT DATE:				

DEPARTMENT OF PUBLIC WORKS
HOWARD COUNTY, MARYLAND
5-22-98
DATE

DEPARTMENT OF PLANNING & ZONING
HOWARD COUNTY, MARYLAND
5/29/98
DATE

CFS CLARK • FINEFROCK & SACKETT, INC.
ENGINEERS • PLANNERS • SURVEYORS
7135 MINSTREL WAY COLUMBIA, MD 21045
(410) 381-7500 BALT. (301) 621-8100 WASH.



DES:	CCM				
DRN:	BLP				
CHK:	CCM				
DATE:	MAY 1998	BY	NO.	REVISION	DATE

TITLE SHEET
600' SCALE MAP NO. 35 BLOCK NO. 21

GRACE PROPERTY L.L.P.
LIBER 3778 FOLIO 584
8 COMMERCIAL TOWNHOUSES
5TH ELECTION DISTRICT
CONTRACT No. 34-3683-D

SCALE:
AS SHOWN
SHEET
1 OF 2

GENERAL NOTES

PART I - GENERAL

- Approximate location of existing mains are shown. The contractor shall take all necessary precautions to protect existing mains and services and maintain uninterrupted supply. Any damage incurred shall be repaired immediately to the satisfaction of the Engineer at the Contractor's expense.
- All horizontal controls are based on Maryland State Coordinates. [North American Datum of 1983 (NAD '83)].
- All vertical controls are based on U.S.G.S. data.
- All pipe elevations shown are invert elevations.
- Clear all utilities by a minimum of 6". Clear all poles by 2'-0" minimum or tunnel as required. The owner has contacted the utility companies and has made arrangements for bracing of poles as shown on the drawings. In the event that the contractor's work requires the bracing of additional poles, any cost incurred by the owner for bracing of additional poles or damages shall be deducted from money owed the contractor. The contractor shall coordinate with the utility companies to schedule the bracing of the poles.
- For details not shown on the drawings, and for materials and construction methods, use Howard County Design Manual, Volume IV, Standard Specifications and Details for Construction (Latest Edition). The contractor shall have a copy of Volume IV on the job.
- Where test pits have been made on existing utilities, they are noted by the symbol at the location of the test pit. A note or notes containing the results of the test pit or pits is included on the drawings. Existing utilities in the vicinity of the proposed work for which test pits have not been dug shall be located by the contractor two weeks in advance of construction operations at his own expense.
- Contractor shall notify the following utility companies or agencies at least five working days before starting work shown on these plans:

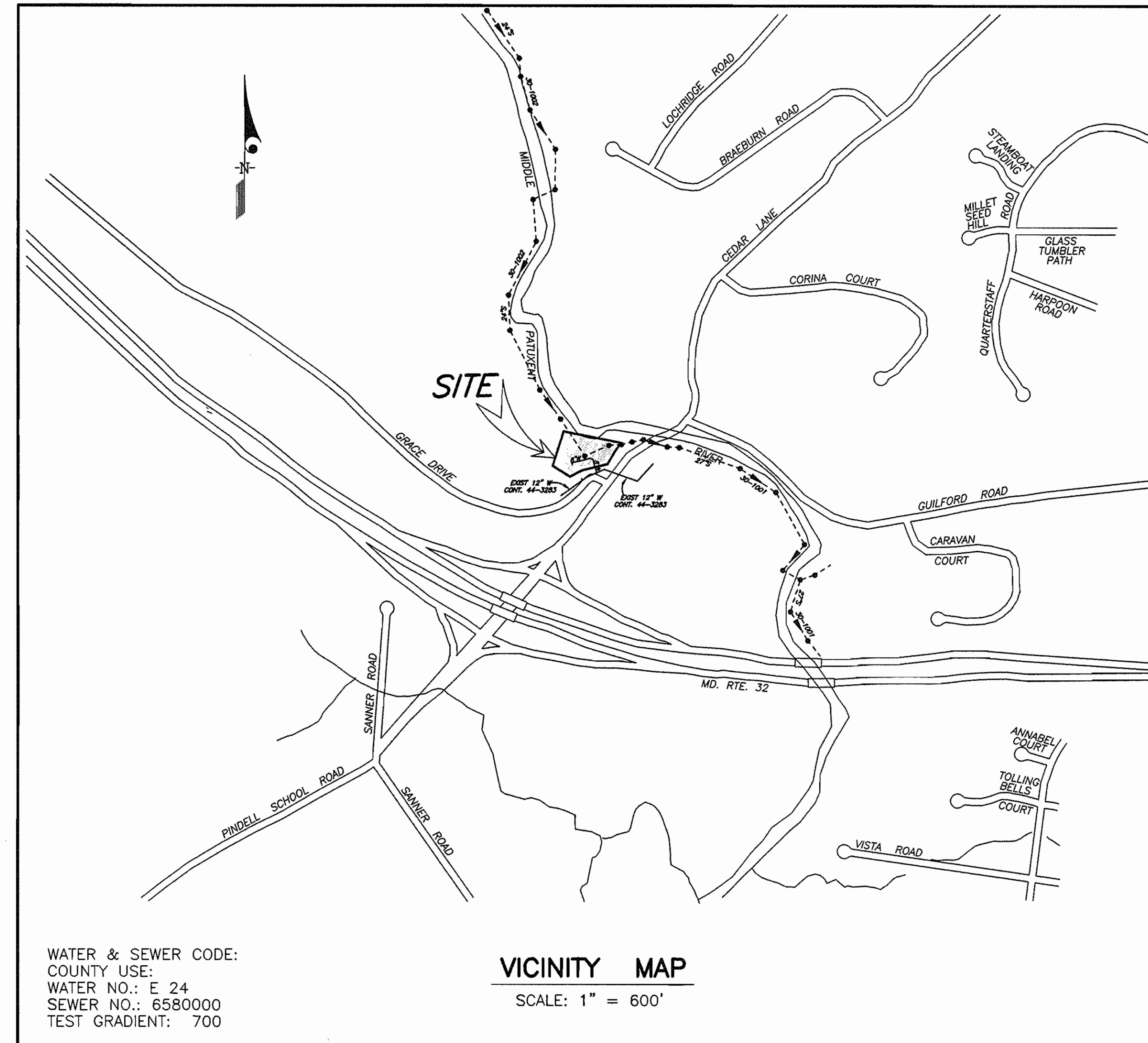
State Highway Administration	531-5533
BG&E Co. Contractor Services	850-4620
BG&E Co. Under Ground Damage Control	787-9068
Miss Utility	1-800-257-7777
Colonial Pipeline Co.	795-1390
Howard County Department of Public Works Bureau of Utilities	313-4900
- Trees and shrubs are to be protected from damage to maximum extent. Trees and shrubs located within the construction strip are not to be removed or damaged by the contractor.
- Contractor shall remove trees, stumps and roots along line of excavation. Payment for such removal shall be included in the unit price bid for construction of the main.
- The contractor shall notify the Bureau of Highways, Howard County, at (410) 313-2450 at least five working days before any open cut of any County road or boring/jacking operation in County roads for laying water/sewer mains or house connections. The approval of these drawings will constitute compliance with DPW requirements per Section 18.114(a) of the Howard County Code.

PART II - WATER

- All water mains to be D.I.P. Class 52 unless otherwise noted.
- Tops of all water mains to have a minimum of 3'-1/2' cover unless otherwise noted.
- Valves adjacent to tees shall be strapped to tees.
- All fittings shall be buttressed or anchored with concrete in accordance with the Standard Details unless otherwise provided for on the drawings.
- Fire hydrants shall be set to the bury line elevations shown on the drawings. All fire hydrants shall be restrained and buttressed with concrete in accordance with Standard Details. Soil around the fire hydrant shall be compacted in accordance with Sections 1000 and 1005 of the Standard Specifications.
- The contractor shall not operate any water main valves on the existing water system.
- All water house connections shall be for inside meter setting unless otherwise noted on plans or in specifications.
- For sprinkler system for all townhomes or multi-family dwelling units shall have a minimum of 1" connection with a 3/4" meter.

PART III - SEWER

- All sewer mains to be D.I.P. or P.V.C. unless otherwise noted.
- All manholes shall be 4'-0" inside diameter unless otherwise noted.
- Force mains shall be D.I.P. only.
- Manholes shown with 12" and 16" walls are for brick manholes only.
- Manholes designated W.T. in plan and profile shall have watertight frame and covers, Standard Detail CS.52. Where watertight manhole frame and cover is used, set top of frame 1" - 6" above finished grade unless otherwise noted on the drawings.
- House(s) with the symbol "C.N.S." indicates that cellar cannot be served.



WATER & SEWER CODE:
 COUNTY USE:
 WATER NO.: E 24
 SEWER NO.: 6580000
 TEST GRADIENT: 700

VICINITY MAP

SCALE: 1" = 600'

TYPE OF BUILDING	COMMERCIAL TOWNHOUSES
NO. OF LOTS/PARCELS	1
NO. OF WATER HOUSE CONNECTIONS	2
NO. OF SEWER HOUSE CONNECTIONS	1
DRAINAGE AREA	MIDDLE PATUXENT
TREATMENT PLANT	LITTLE PATUXENT WATER RECLAMATION PLANT, Savage, Howard County, Md.

SEDIMENT CONTROL MEASURES WILL BE IMPLEMENTED IN ACCORDANCE WITH SECTION 219 OF THE SPECIFICATIONS AND WITH SITE DEVELOPMENT PLAN SDP-98-92; DRAWING , SEDIMENT AND EROSION CONTROL.

REVIEWED FOR HOWARD SOIL CONSERVATION DISTRICT AND MEETS TECHNICAL REQUIREMENTS.

SIGNATURE _____ DATE _____
 U. S. SOIL CONSERVATION SERVICE
 THIS DEVELOPMENT PLAN IS APPROVED FOR SOIL EROSION AND SEDIMENT CONTROL BY THE HOWARD SOIL CONSERVATION DISTRICT.
 APPROVED:
 HOWARD S. C. D. _____ DATE _____

QUANTITIES				
ITEMS	QUANTITIES ESTIMATED	QUANTITIES	TYPE	AS-BUILT
				MANUFACTURER/SUPPLIER
8" W	247 LF	247 LF	DIP	J.M. MANUFACTURING/BELAIR ROAD SUPPLY
4" WHC	26 LF	26 LF	DIP	US PIPE & FOUNDRY/BELAIR ROAD SUPPLY
FH & VALVE	1 EA	1 EA	5.0'	J.M. MANUFACTURING/BELAIR ROAD SUPPLY
12" x 8" TS & V	1 EA	1 EA	DIP	POWER SEAL
6" S	10 EA	10 EA	PVC	J.M. MANUFACTURING/BELAIR ROAD SUPPLY
4" V	2 EA	2 EA	DIP	MUELLER CO/BELAIR ROAD SUPPLY

NAME OF UTILITY CONTRACTOR: CONSOLIDATE CONST. SERVICES (C.C.S.)
 SURVEY AND DRAFTING DIVISION AS-BUILT DATE: 11/12/98

DEPARTMENT OF PUBLIC WORKS
 HOWARD COUNTY, MARYLAND
 Robert D. ... 5-22-98
 CHIEF, BUREAU OF UTILITIES

DEPARTMENT OF PLANNING & ZONING
 HOWARD COUNTY, MARYLAND
 ... 5/29/98
 CHIEF, DEVELOPMENT ENGINEERING DIVISION

CFS CLARK • FINEFROCK & SACKETT, INC.
 ENGINEERS • PLANNERS • SURVEYORS
 7135 MINSTREL WAY COLUMBIA, MD 21045
 (410) 381-7500 BALT. (301) 621-8100 WASH.

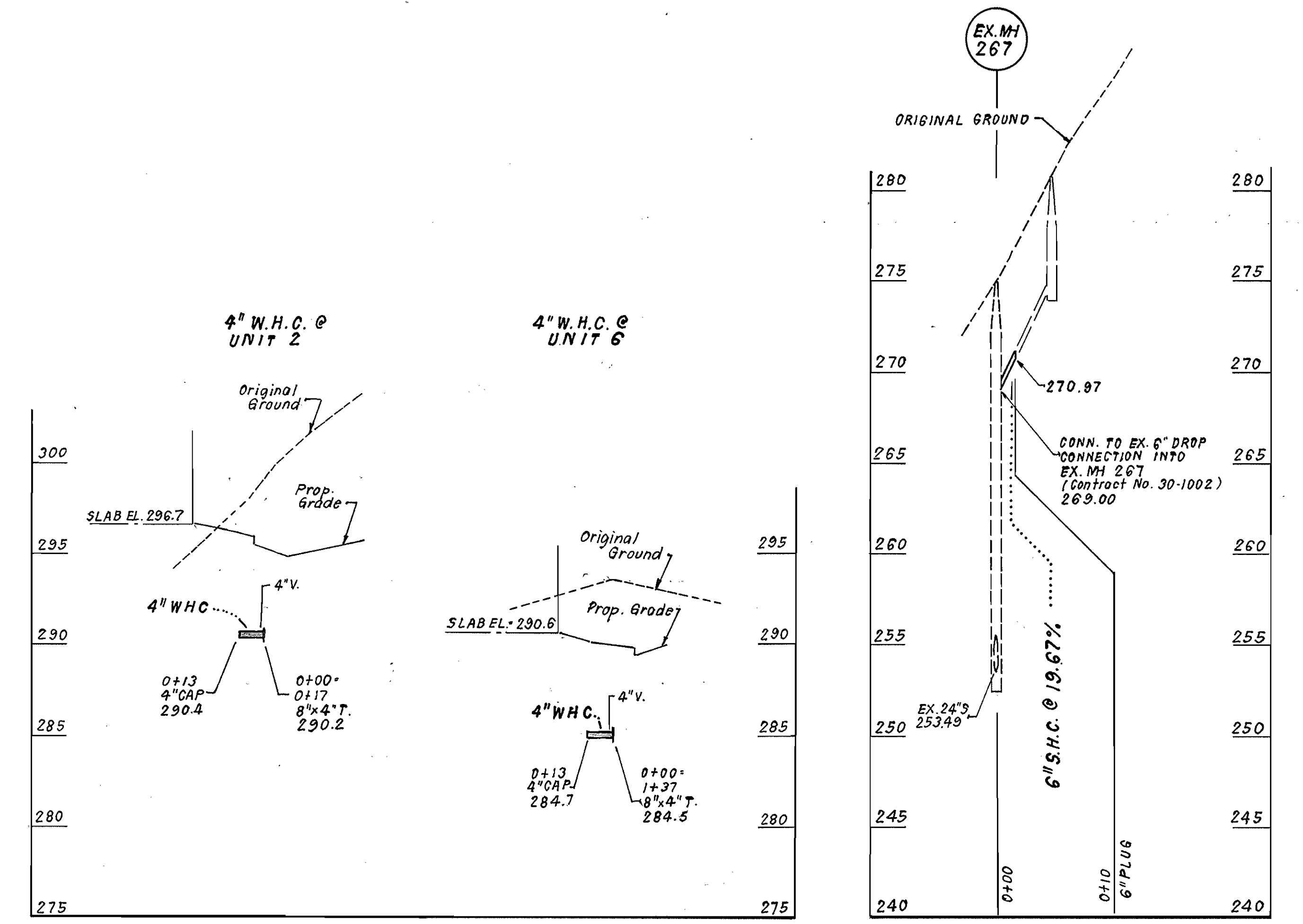
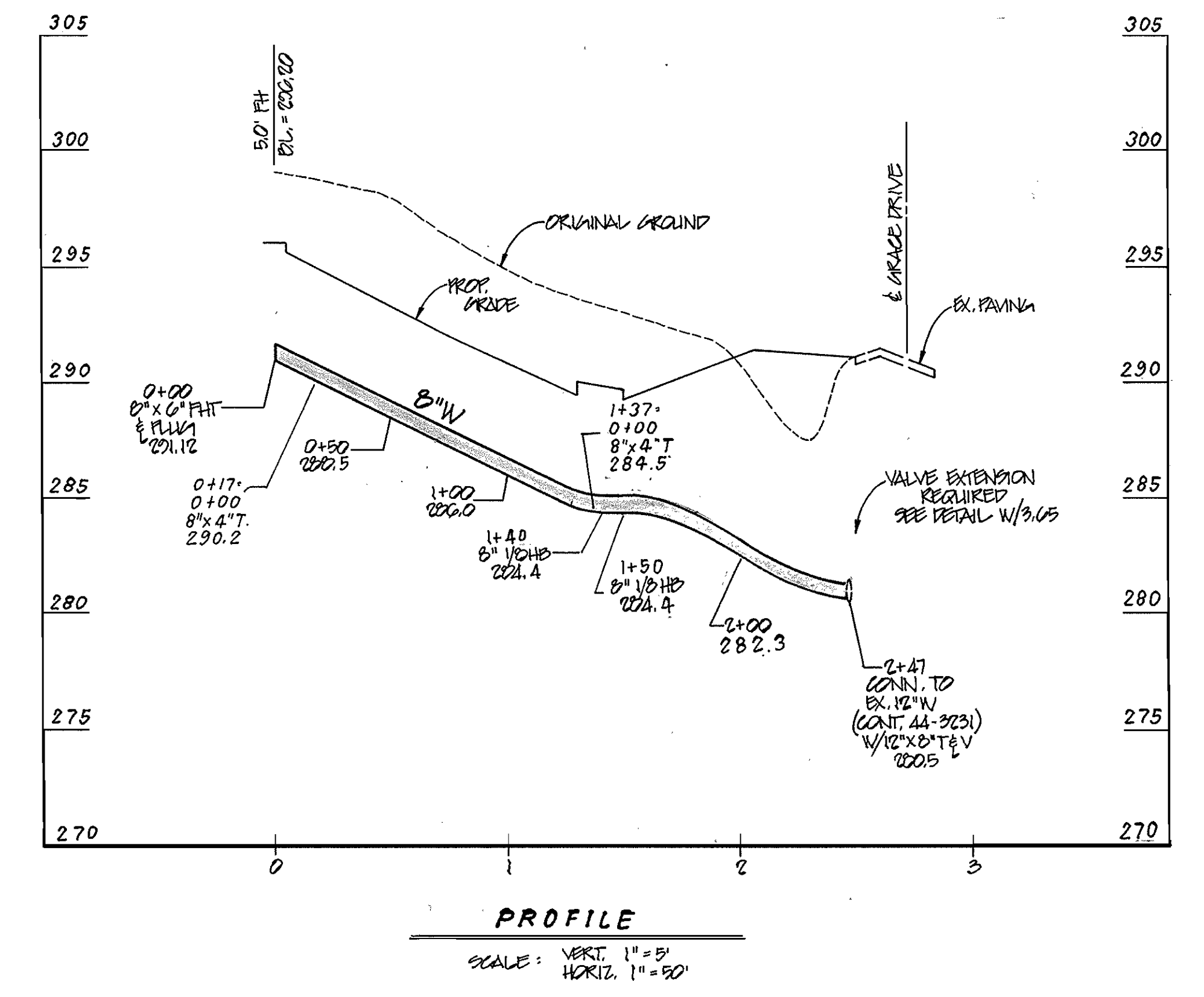
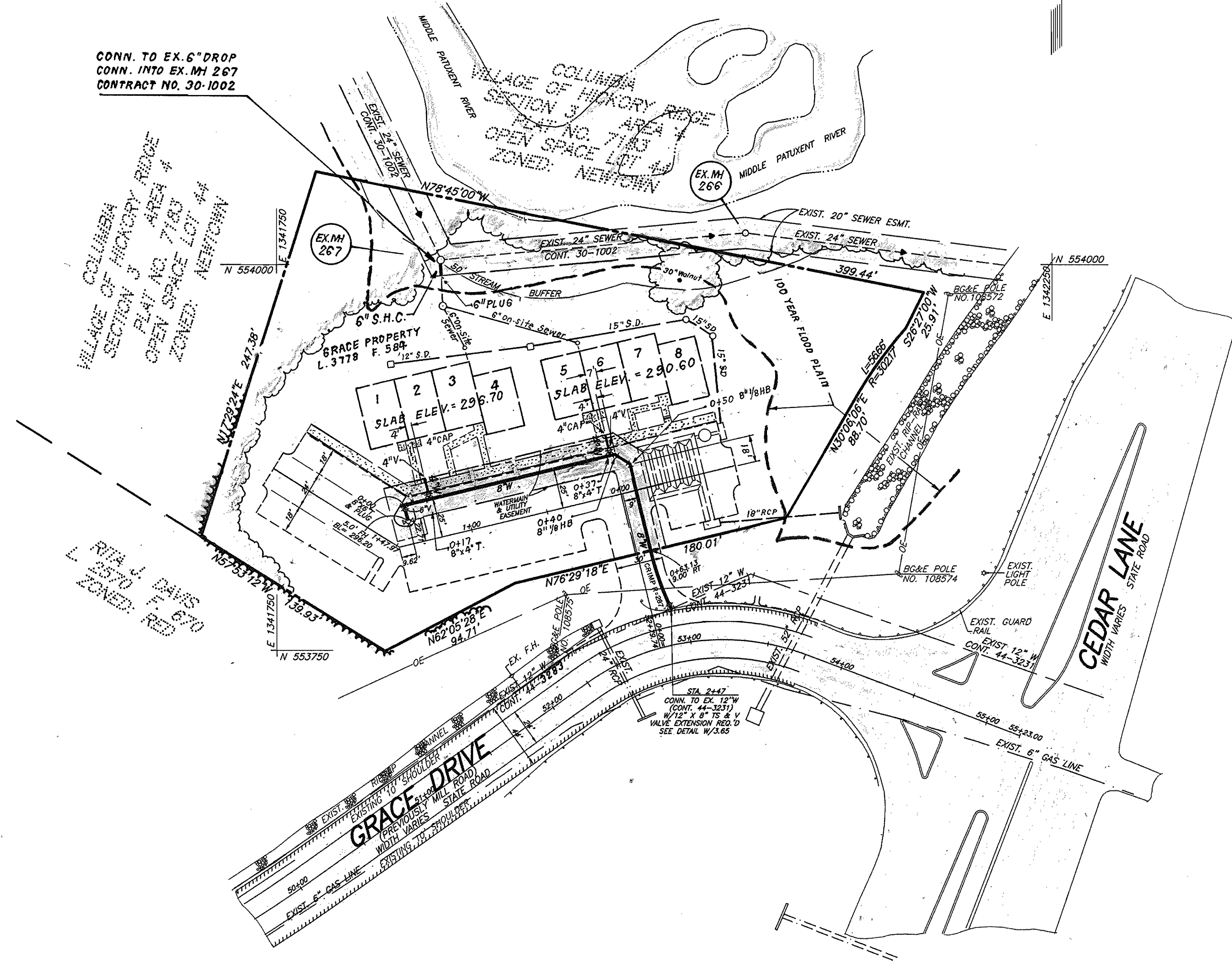


DES:	CCM				
DRN:	BLP				
CHK:	CCM				
DATE:	MAY 1998	BY	NO.	REVISION	DATE

TITLE SHEET
 600' SCALE MAP NO. 35 BLOCK NO. 21

WATER & SEWER AS-BUILT
GRACE PROPERTY L.L.P.
 LIBER 3778 FOLIO 584
 8 COMMERCIAL TOWNHOUSES
 5TH ELECTION DISTRICT
CONTRACT No. 34-3683-D

SCALE:
 AS SHOWN
 SHEET
 1 OF 2



DEPARTMENT OF PUBLIC WORKS
HOWARD COUNTY, MARYLAND

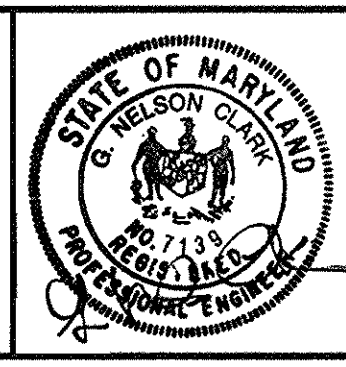
Robert Deering 5-22-98
CHIEF, BUREAU OF UTILITIES

DEPARTMENT OF PLANNING & ZONING
HOWARD COUNTY, MARYLAND

Mike Wainman 5/19/98
CHIEF, DEVELOPMENT ENGINEERING DIVISION

CFE CLARK · FINEFROCK & SACKETT, INC.
ENGINEERS · PLANNERS · SURVEYORS

7135 MINSTREL WAY COLUMBIA, MD 21045
(410) 381-7500 BALT. (301) 621-8100 WASH.



DES: CCM					
DRN: BLP					
CHK: CCM					
DATE: FEB. 1998	BY	NO.	REVISION	DATE	

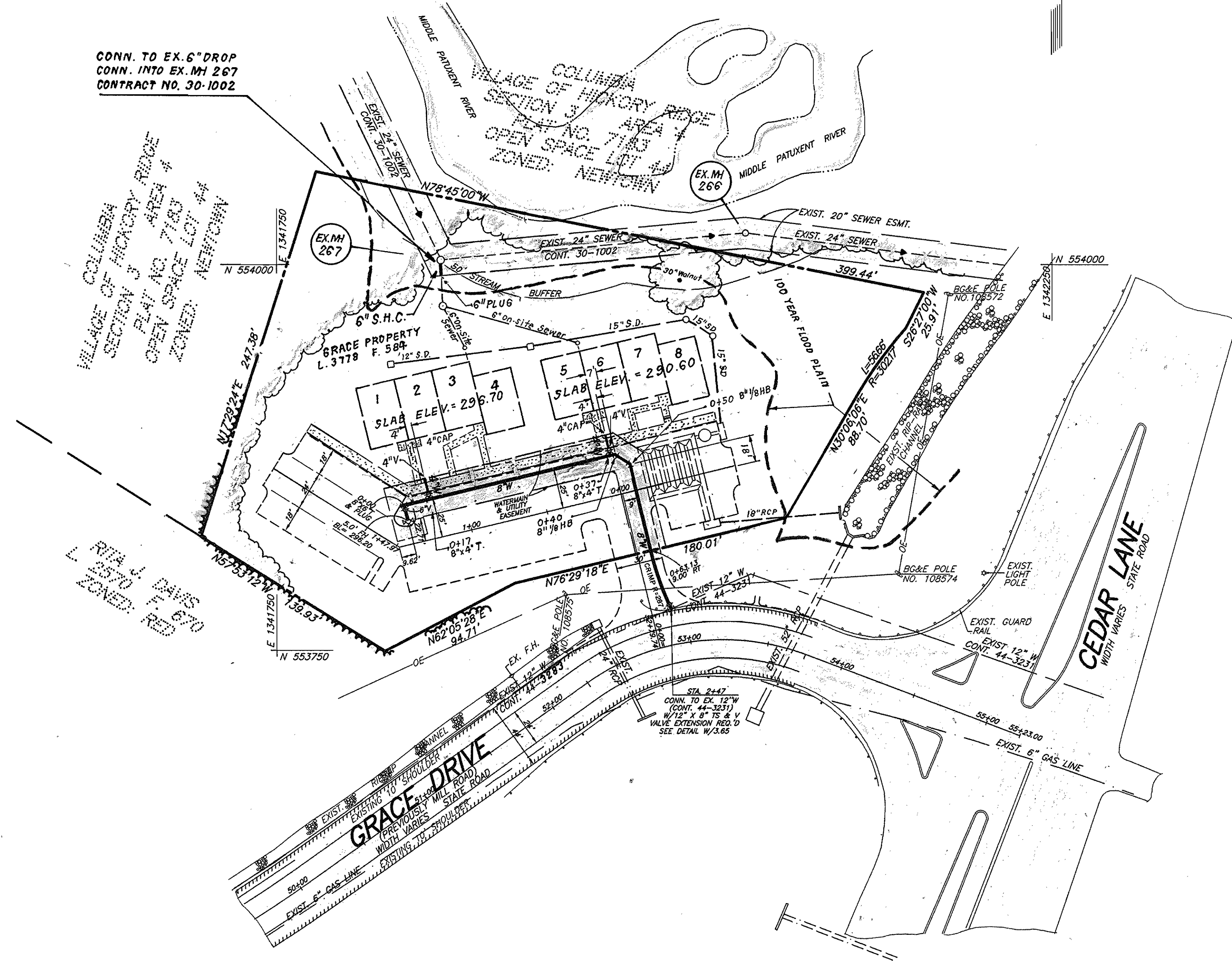
PLAN AND PROFILE

600' SCALE MAP NO. 35 BLOCK NO. 2

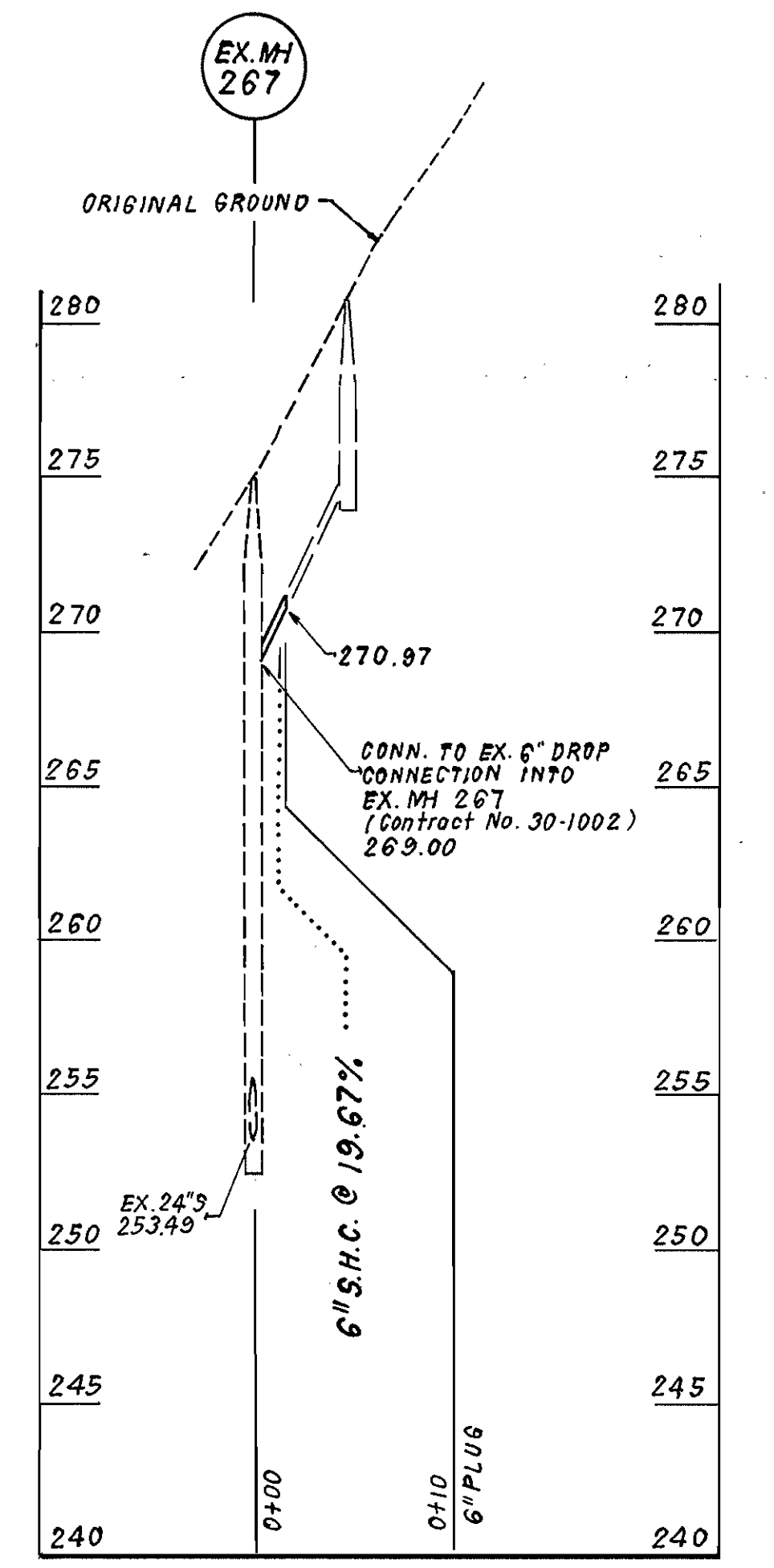
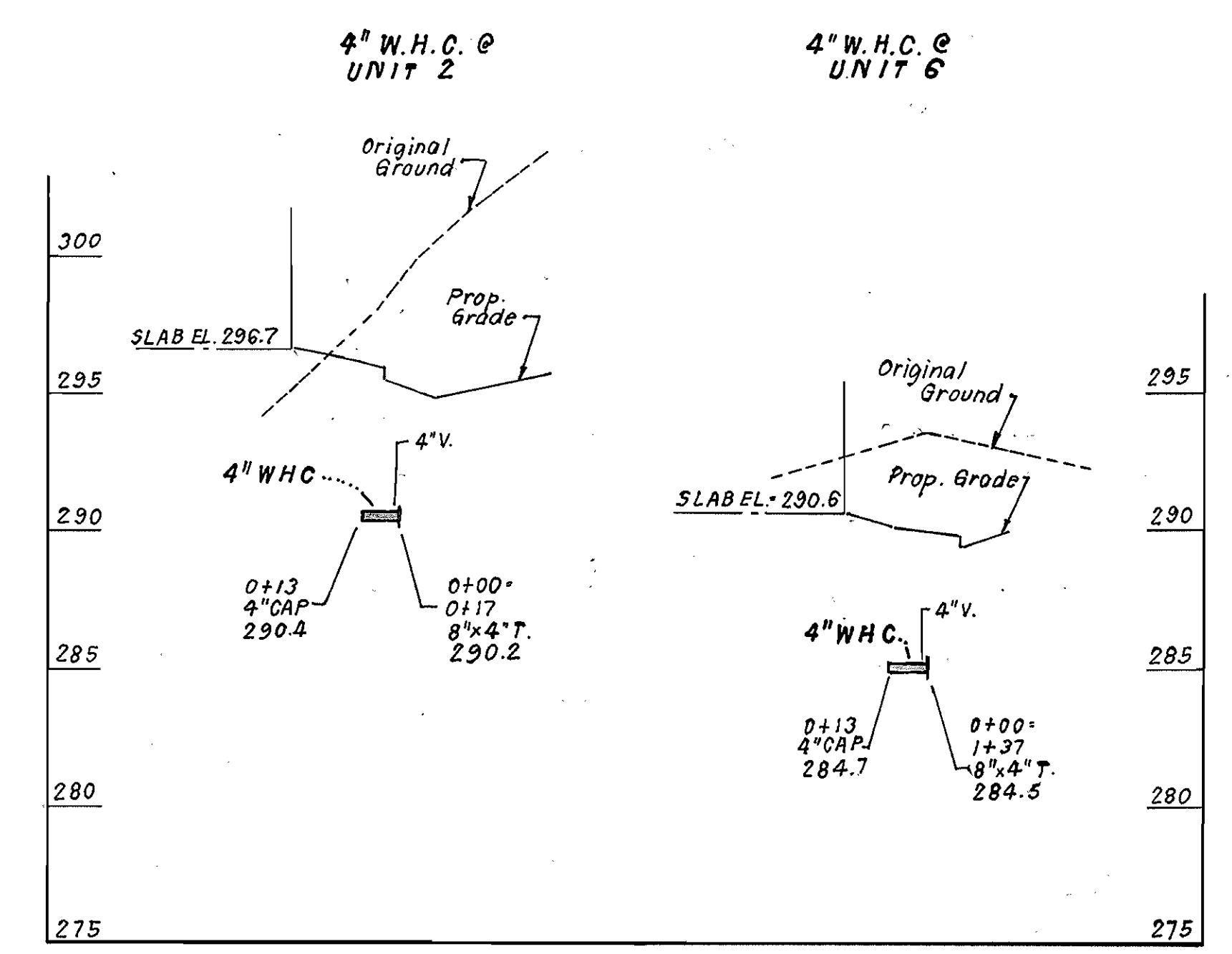
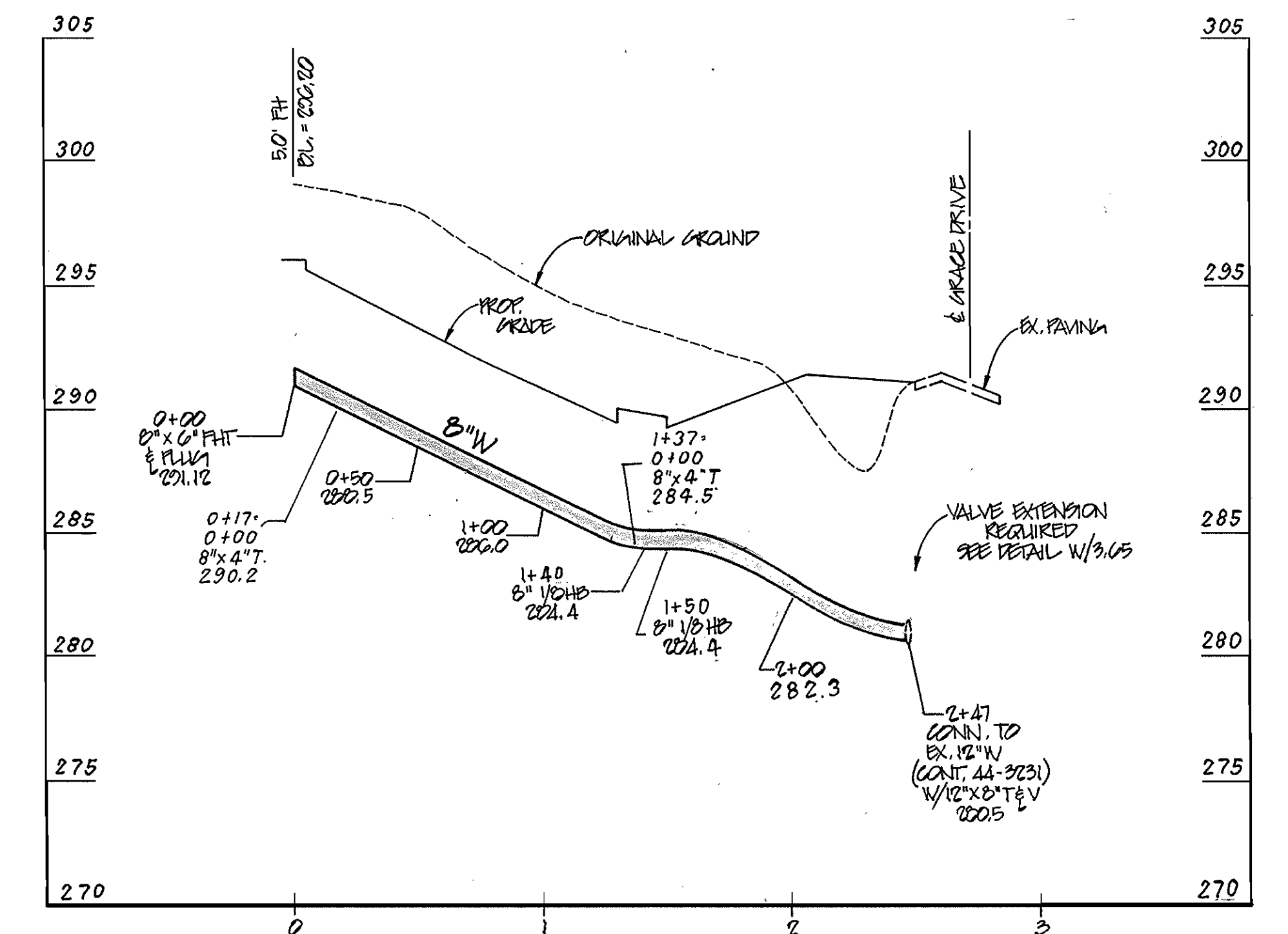
GRACE PROPERTY L.L.P.
LIBER 371B FOLIO 50A
OF COMMERCIAL TOWNHOUSES
5TH ELECTION DISTRICT
CONTRACT No. 34-3683-D

SCALE:
AS SHOWN

SHEET
2 OF 2



PLAN SCALE
1" = 50'



DEPARTMENT OF PUBLIC WORKS
HOWARD COUNTY, MARYLAND

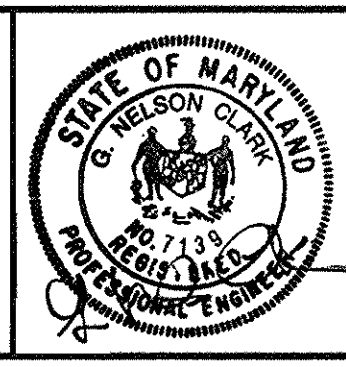
Robert Bennett 5-22-98
CHIEF, BUREAU OF UTILITIES

DEPARTMENT OF PLANNING & ZONING
HOWARD COUNTY, MARYLAND

Mike Wainman 5/21/98
CHIEF, DEVELOPMENT ENGINEERING DIVISION

CFE CLARK · FINEFROCK & SACKETT, INC.
ENGINEERS · PLANNERS · SURVEYORS

7135 MINSTREL WAY COLUMBIA, MD 21045
(410) 381-7500 BALT. (301) 621-8100 WASH.



DES: CCM					
DRN: BLP					
CHK: CCM					
DATE: FEB. 1998	BY	NO.	REVISION	DATE	

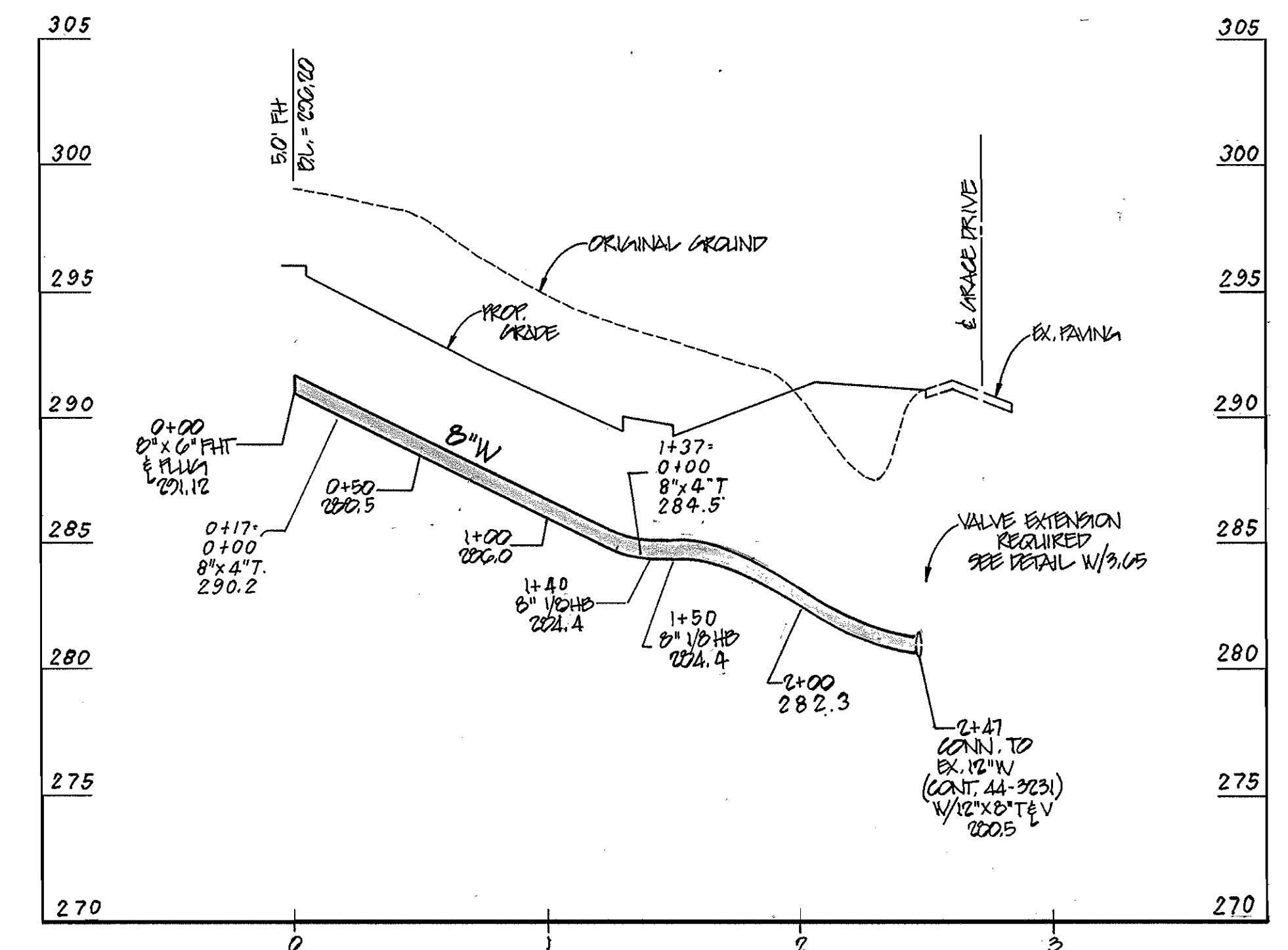
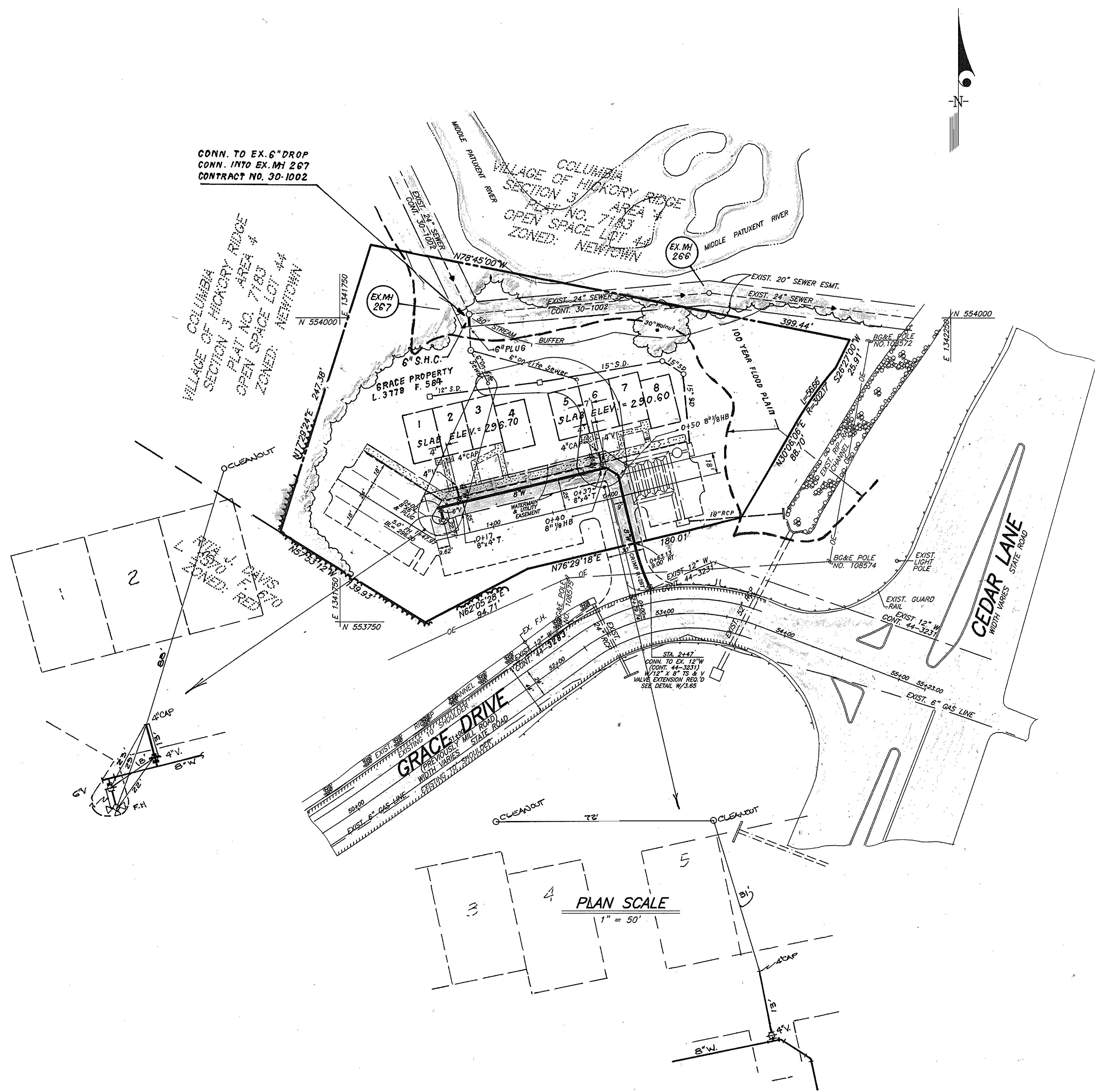
PLAN AND PROFILE

600' SCALE MAP NO. 35 BLOCK NO. 2

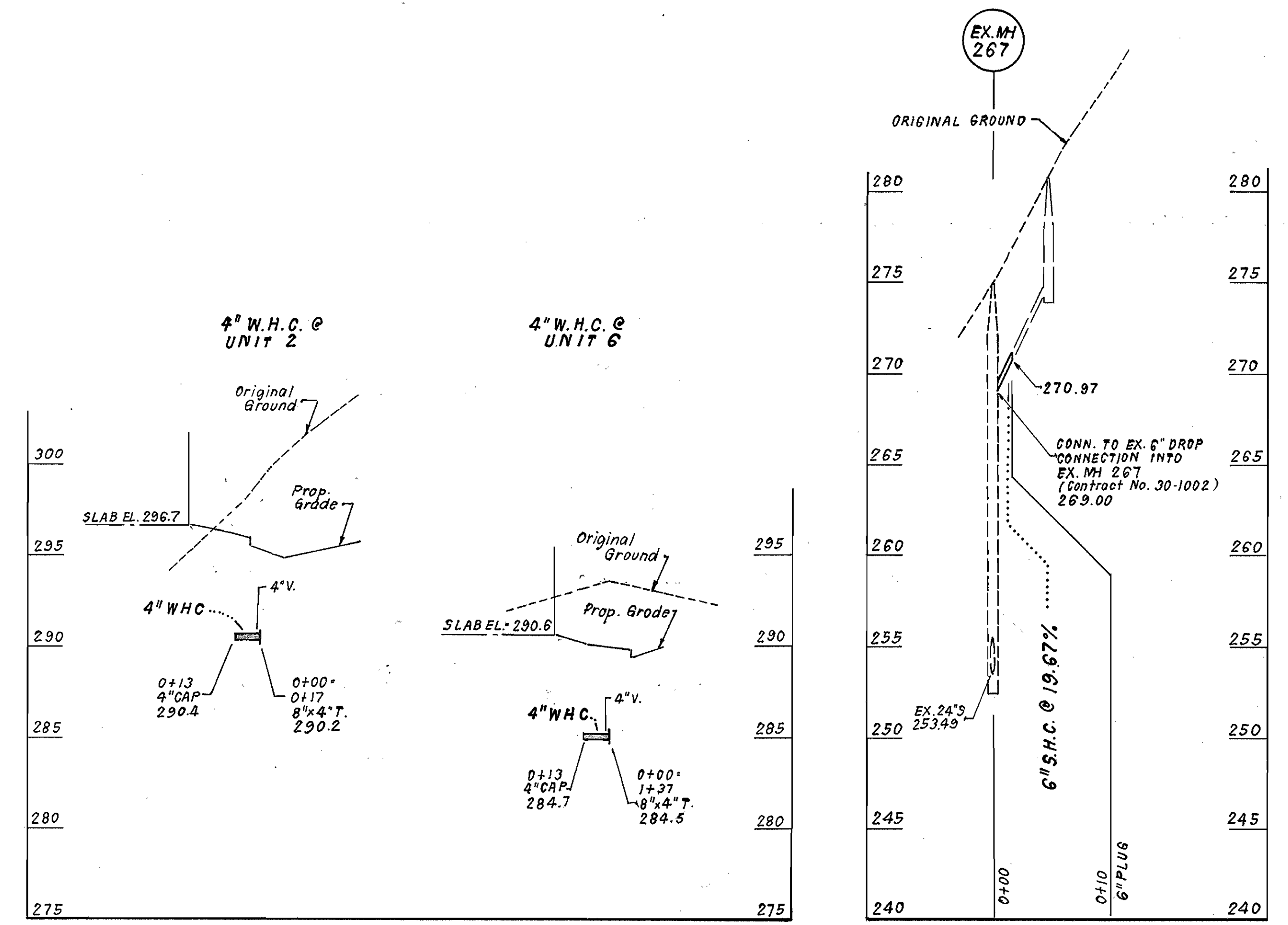
GRACE PROPERTY L.L.P.
LIBER 3718 FOLIO 50A
OF COMMERCIAL TOWNHOUSES
5TH ELECTION DISTRICT
CONTRACT No. 34-3683-D

SCALE:
AS SHOWN

SHEET
2 OF 2



PROFILE
SCALE: VERT. 1" = 5'
HORIZ. 1" = 50'



DEPARTMENT OF PUBLIC WORKS
HOWARD COUNTY, MARYLAND

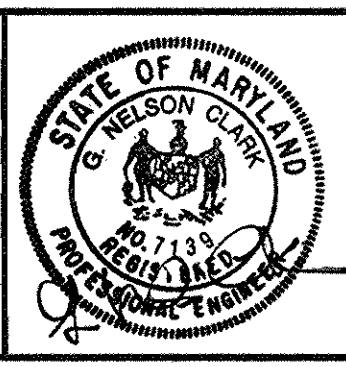
Robert B. ...
5-22-98
CHIEF, BUREAU OF UTILITIES

DEPARTMENT OF PLANNING & ZONING
HOWARD COUNTY, MARYLAND

...
5/19/98
CHIEF, DEVELOPMENT ENGINEERING DIVISION

CLARK · FINEPROCK & SACKETT, INC.
ENGINEERS · PLANNERS · SURVEYORS

7135 MINSTREL WAY COLUMBIA, MD 21045
(410) 381-7500 BALT. (301) 621-8100 WASH.



DES: CCM					
DRN: BLP					
CHK: CCM					
DATE: FEB. 1998	BY	NO.	REVISION	DATE	

PLAN AND PROFILE

600' SCALE MAP NO. 35 BLOCK NO. 21

GRACE PROPERTY L.L.P.
LIBER 3718 FOLIO 504
& COMMERCIAL TOWNHOUSES

5TH ELECTION DISTRICT
CONTRACT No. 34-3683-D

SCALE:
AS SHOWN

SHEET
2 OF 2