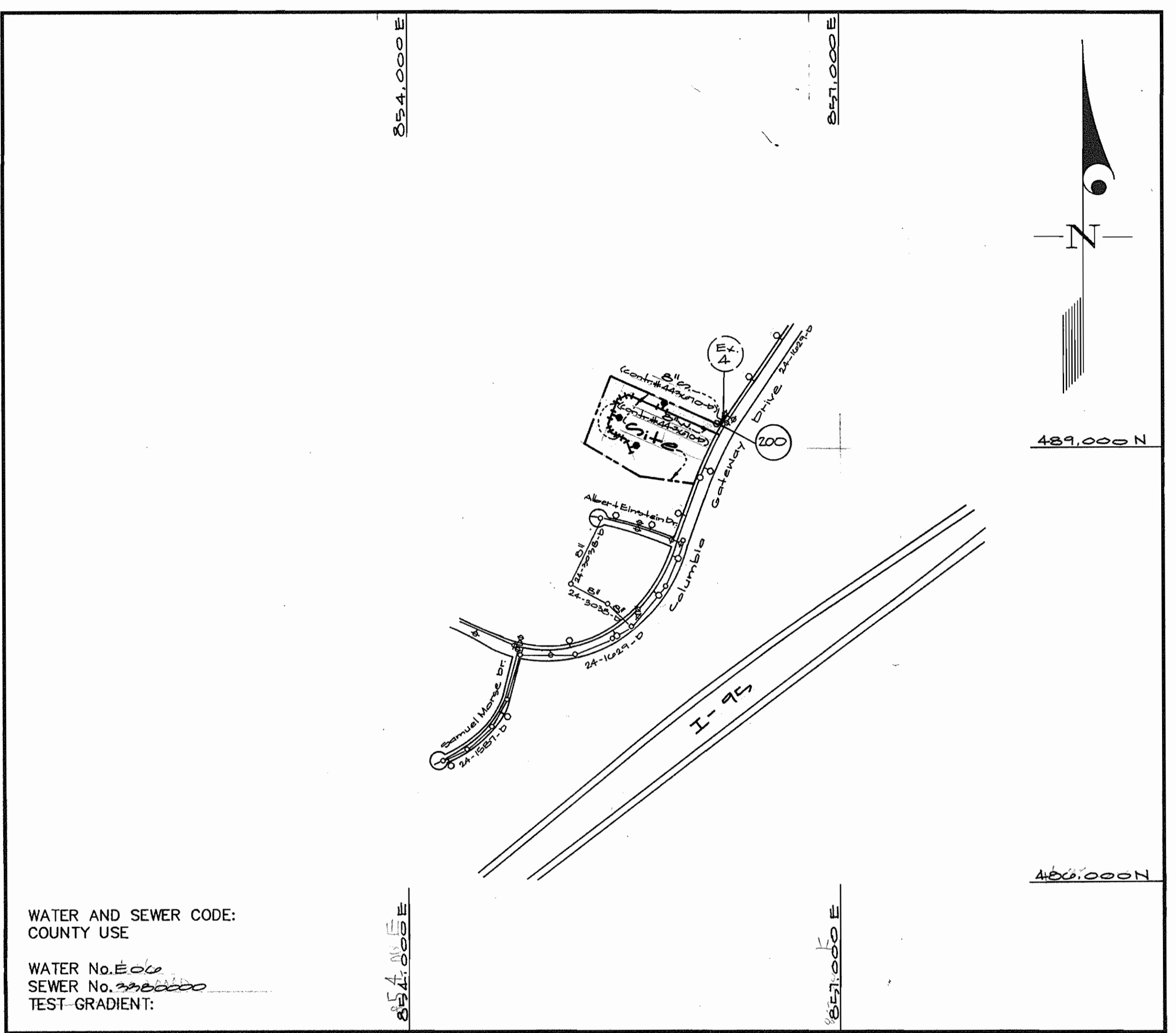


QUANTITIES			
ITEMS	QUANTITIES ESTIMATED	AS-BUILT	
		QUANTITIES	MANUFACTURER/SUPPLIER
Fire Hydrant	3 Ea.		
8" x 8" F.H.T.	3 Ea.		
8" x 8" T.	1 Ea.		
12" x 8" Tee	1 Ea.		
8" H.B.	5 Ea.		
8" Valve	1 Ea.		
8" Cap	1 Ea.		
8" Water	120 B.L.F.		
6" Water	62 L.F.		
6" Valve	3 Ea.		
8" Sewer	83 L.F.		
Manhole	1 Ea.		
Type B Drop Conn.	1 Ea.		
Paving Replacement	10 Cy		

TYPE OF BUILDING	<i>Commercial (Office Bldg)</i>
NUMBER OF UNITS	1
NUMBER OF S.H.C.'s	1
NUMBER OF W.H.C.'s	1
DRAINAGE AREA	<i>Dorney</i>
TREATMENT PLANT	<i>Little Patuxent Water Reclamation Plant</i>



- GENERAL NOTES**
- PART I**
- Approximate location of existing mains are shown. The contractor shall take all necessary precautions to protect existing mains and services and maintain uninterrupted supply. Any damage incurred shall be repaired immediately to the satisfaction of the Engineer at the Contractor's expense.
  - All horizontal controls are based on Maryland State Coordinates [North American Datum 1983 (NAD '83)].
  - All vertical controls are based on U.S.G.S. data.
  - All pipe elevations shown are invert elevations.
  - Clear all utilities by a minimum of 6". Clear all poles by 2'-0" minimum or tunnel as required. The owner has contacted the utility companies and has made arrangements for bracing of poles as shown on the drawings. In the event the contractor's work requires the bracing of additional poles, any cost incurred by the owner for bracing of additional poles or damages shall be deducted from money owed the contractor. The contractor shall coordinate with the utility companies to schedule the bracing of the poles.
  - For details not shown on the drawings, and for materials and construction methods use Howard County Design Manual, Volume IV, Standard Specifications and Detail for Construction (Latest Edition). The contractor shall have a copy of Volume IV on the job.
  - Where test pits have been made on existing utilities, they are noted by the symbol at the location of the test pit. A note or notes containing the results of the test pit or pits is included on the drawings. Existing utilities in the vicinity of the proposed work for which test pits have not been dug shall be located by the contractor two weeks in advance of construction operations at his own expense.
  - Contractor shall notify the following utility companies or agencies at least (5) working days before starting work shown on these plans:

State Highway Administration	531-5533
BGE Contractor Services	850-4620
BGE Under Ground Damage Control	787-9068
Miss Utility	1-800-257-7777
Colonial Pipeline Co.	795-1390
Howard County Department of Public Works Bureau of Utilities	313-4900
  - Trees and shrubs are to be protected from damage to maximum extent. Trees and shrubs located within the construction strip are not to be removed or damaged by the contractor.
  - Contractor shall remove trees, stumps and roots along line of excavation. Payment for such removal shall be included in the unit price bid for construction of the main.
  - The contractor shall notify the Bureau of Highways, Howard County, at (410) 313-2450 at least five (5) working days before any open cut of any County road or boring/jacking operation on County roads for laying water/sewer mains or house connections. The approval of these drawings will constitute compliance with DPW requirement per Section 18.114(a) of the Howard County Code.

NAME OF UTILITY CONTRACTOR: \_\_\_\_\_

SURVEY AND DRAFTING DIV. CHECKBOX:  AS-BUILT DATE: \_\_\_\_\_

WATER AND SEWER CODE:  
COUNTY USE

WATER No. *E 06*  
SEWER No. *390000*  
TEST-GRADIENT:

VICINITY MAP  
SCALE: 1"=600'

CONTRACT No. 24-3070-D

Columbia Gateway  
Parcel 9-24

HOWARD COUNTY, MARYLAND

DEPARTMENT OF PUBLIC WORKS

- PART II - WATER**
- All water mains to be D.I.P. Class 52 unless otherwise noted.
  - Tops of all water mains to have a minimum of 3'-1/2' cover unless otherwise noted.
  - Valves adjacent to tees shall be strapped to tees.
  - All fittings shall be buttressed or anchored with concrete in accordance with the Standard Details unless otherwise provided for on the drawings.
  - Fire hydrants shall be set to the bury line elevations shown on the drawings. All fire hydrants shall be restrained and buttressed with concrete in accordance with the Standard Details. Soil around the fire hydrant shall be compacted in accordance with Section 1000 and 1005 of the Standard Specifications.
  - The contractor shall not operate any water main valves on the existing water system.
  - All water house connections shall be for inside meter setting unless otherwise noted on plans or in specifications.
  - For sprinkler system for all townhomes or multi-family dwelling units should have a minimum of 1' connection with a 3/4" meter.
- PART III - SEWER**
- All sewer mains shall be DIP and P.V.C. unless otherwise noted.
  - All manholes shall be 4' - 0" inside diameter unless otherwise noted.
  - Force mains shall be D.I.P. only.
  - Manholes shown with 12" and 16" walls are for brick manholes only. Manholes designated W.T. in plan and profile shall have watertight frame and covers, Standard Detail G5.52. Where watertight frame and cover is used, set top of frame 1'-6" above finished grade unless otherwise noted on drawings.
  - House(s) with the symbol "C.N.S." indicates that cellar cannot be served.

Sediment Control Measures will be implemented in accordance with Section 219 of the Specifications & with *SWP 02-01* Drawings for Sediment & Erosion Control.

REVIEWED FOR HOWARD SOIL CONSERVATION DISTRICT AND MEETS TECHNICAL REQUIREMENT.

*Clayton Simmons* 3/17/98  
SIGNATURE DATE  
U.S.D. NATURAL RESOURCES CONSERVATION SERVICE

THIS DEVELOPMENT PLAN IS APPROVED FOR SOIL EROSION AND SEDIMENT CONTROL BY THE HOWARD SOIL CONSERVATION DISTRICT.

APPROVED  
*John L. Robertson* 3/17/98  
HOWARD S.C.D. DATE

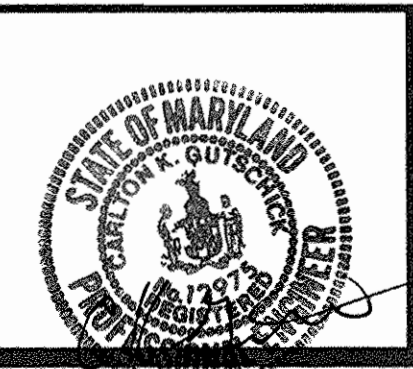
DEPARTMENT OF PUBLIC WORKS  
HOWARD COUNTY, MARYLAND

*Robert Benjamin* 3-13-98  
CHIEF, BUREAU OF UTILITIES DATE

DEPARTMENT OF PLANNING AND ZONING  
HOWARD COUNTY, MARYLAND

*John Damman* 3/19/98  
CHIEF, DEVELOPMENT ENGINEERING DIVISION DATE

**GLW** GUTSCHICK LITTLE & WEBER, P.A.  
CIVIL ENGINEERS, SURVEYORS, PLANNERS, LANDSCAPE ARCHITECTS  
3909 NATIONAL DRIVE - SUITE 250 - BURTONSVILLE OFFICE PARK - BURTONSVILLE, MARYLAND 20866  
TEL: (410) 880-1820 ~ FAX: (301) 421-4186



DES:	<i>WGL</i>				
DRN:	<i>WGL</i>				
CHK:	<i>DT</i>				
DATE:	<i>March 1998</i>	BY	NO	REVISION	DATE

Title sheet  
600' SCALE MAP NO. *AS* BLOCK NO. *147*

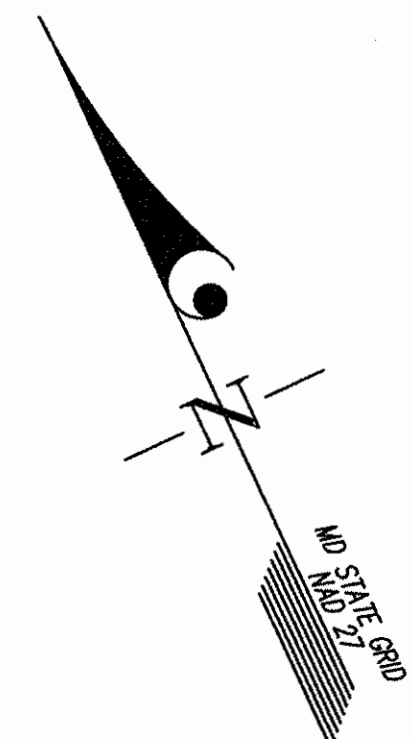
**Columbia Gateway**  
Parcel 9-24  
Allied Signal  
City Election Dist. Howard County, Maryland

Contract No. 24-3070-D

GLW FILE No.  
*77-155*

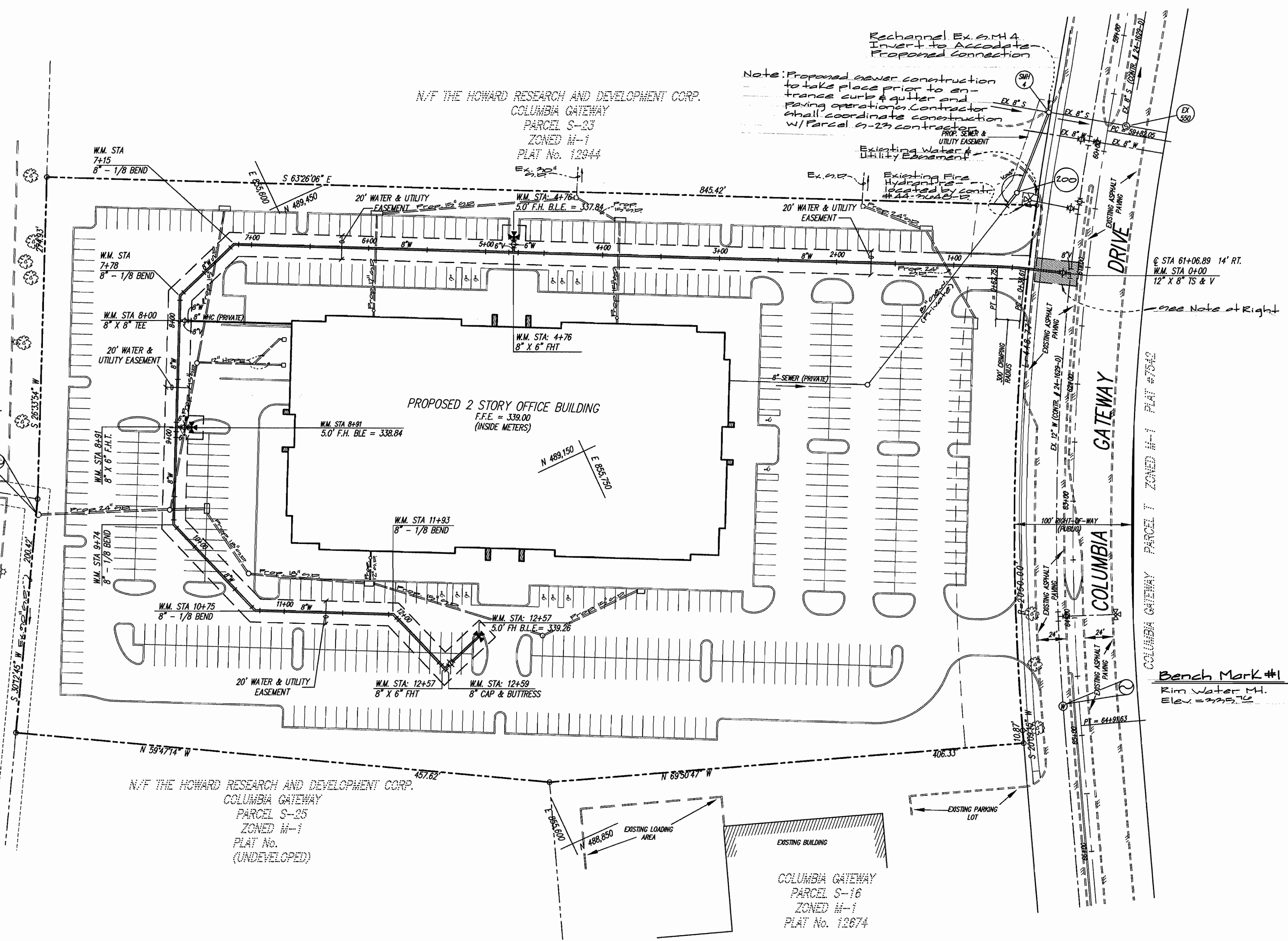
SCALE AS SHOWN

SHEET 1 OF 2



Bench Mark #2  
 N 13 58.11 W  
 113.5811

COLUMBIA GATEWAY  
 PARCEL H-2  
 ZONED H-1  
 PLAT No. 7170



- NOTE: FOR WATER CONNECTION IN COLUMBIA GATEWAY DRIVE SEE MAINTENANCE OF TRAFFIC PLAN SHEET 3.
- NOTE: RIM OF MANHOLES TO BE SET AS INDICATED ON PROFILES.
- NOTE: CONTRACTOR IS RESPONSIBLE FOR REPLACING EXISTING PAVING REMOVED DURING CONSTRUCTION OF THE PROPOSED 8" WATER MAIN. SEE HOWARD COUNTY STD. G4.01.
- NOTE: CONTRACTOR SHALL SEQUENCE THE CONSTRUCTION OF THIS CONTRACT TO AVOID ANY POSSIBLE CONFLICTS WITH SEDIMENT CONTROL MEASURES INSTALLED UNDER SDP-98-91.

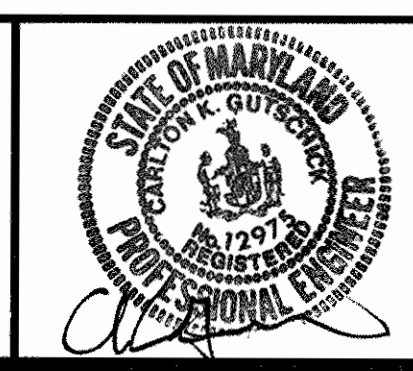
Bench Mark #1  
 Rim Water M.  
 Elev. = 225.76

PLAN SCALE  
 1" = 50'

DEPARTMENT OF PUBLIC WORKS  
 HOWARD COUNTY, MARYLAND  
 Chief, Bureau of Utilities  
 3-13-98  
 DATE

DEPARTMENT OF PLANNING AND ZONING  
 HOWARD COUNTY, MARYLAND  
 Chief, Development Engineering Division  
 3/19/98  
 DATE

GLW GUTSCHICK LITTLE & WEBER, P.A.  
 CIVIL ENGINEERS, LAND SURVEYORS, LAND PLANNERS, LANDSCAPE ARCHITECTS  
 3909 NATIONAL DRIVE - SUITE 250 - BURTONSVILLE OFFICE PARK  
 BURTONSVILLE, MARYLAND 20866  
 TEL: 301-421-4024 BALT: 410-880-1820 DC/VA: 301-988-2524 FAX: 301-421-4186

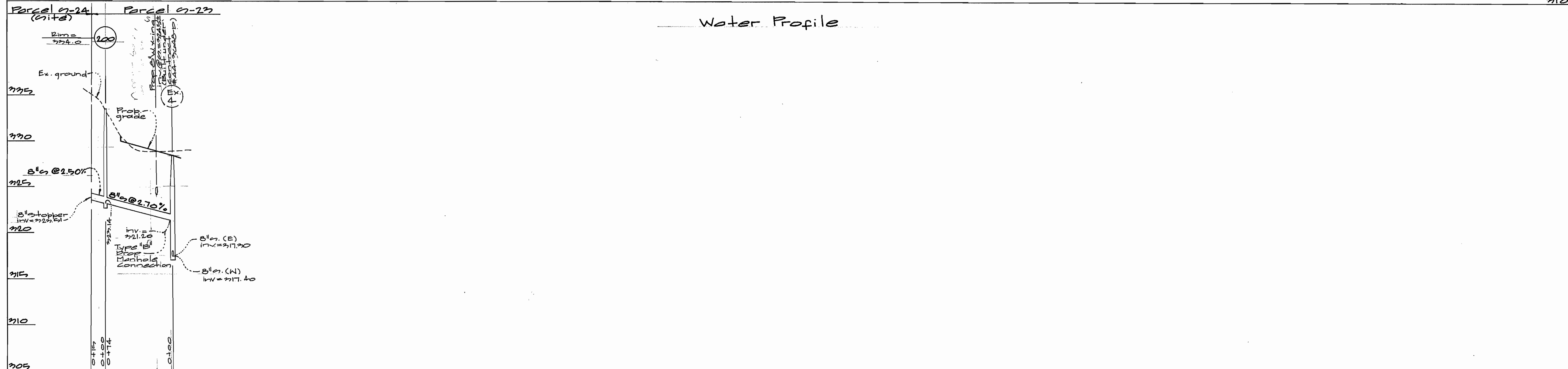
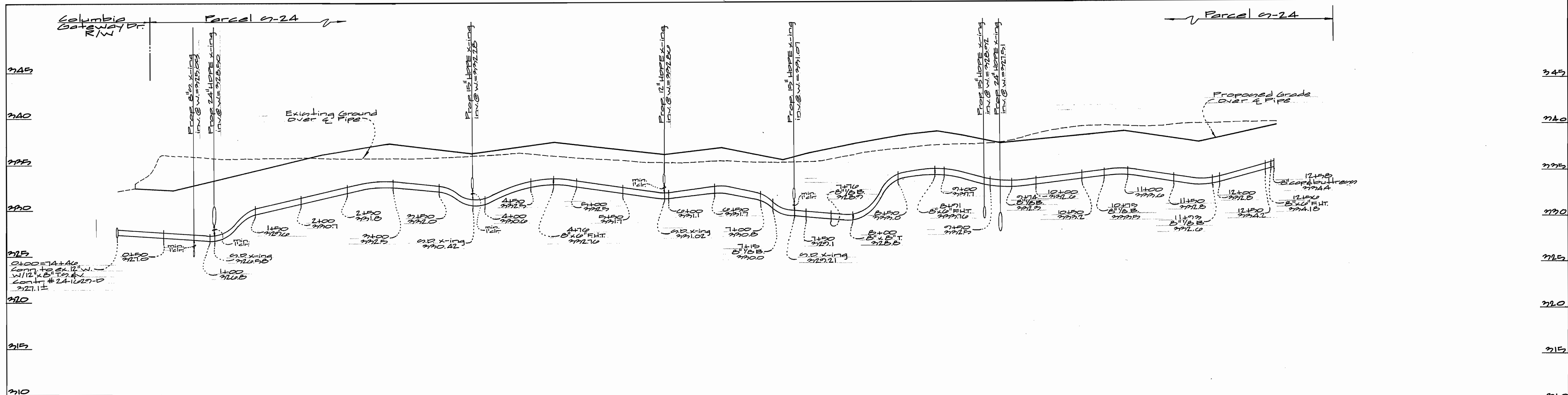


DES: <b>RL</b>	BY	NO	REVISION	DATE
DRN: <b>RL</b>				
CHK: <b>RL</b>				
DATE: FEB 1998				

WATER & SEWER  
 CONSTRUCTION PLAN  
 600' SCALE MAP NO. 43 BLOCK NO. 1 & 7

COLUMBIA GATEWAY  
 PARCEL S-24  
 Allied Signal  
 6th ELECTION DISTRICT  
 HOWARD COUNTY, MARYLAND  
 CONTRACT No. 24-3670-D

SCALE AS SHOWN  
 SHEET 2 OF 22



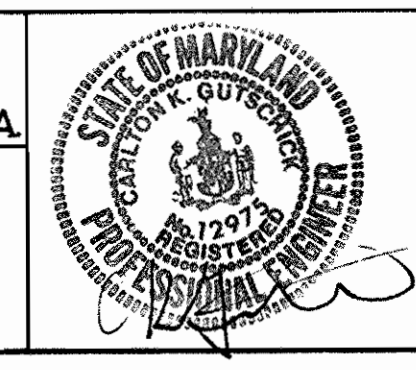
Water Profile

Sewer Profile

Department of Public Works  
Howard County, Maryland  
  
R. J. ...  
Chief, Bureau of Utilities

Department of Planning & Zoning  
Howard County, Maryland  
  
...  
Chief, Development Engineering Division

**GLW** GUTSCHICK LITTLE & WEBER, P.A.  
ENGINEERS, PLANNERS, SURVEYORS  
3909 NATIONAL DRIVE, SUITE 250 • BURTONTVILLE OFFICE PARK  
BURTONTVILLE, MD 20866  
(301) 421-4024



DES: WSL					
DRN: WSL					
CHK: JDR					
DATE: March 1998	BY	NO.	REVISION	DATE	

Water & sewer Profile  
Scale: Horiz: 1"=50'  
Vert: 1"=5'

600' SCALE MAP NO. 43 BLOCK NO. 14

**Columbia Gateway**  
Parcel G-24  
Allied Signal  
6th. Election District  
Howard County, Maryland  
Contract No. 24-3670-D

SCALE AS SHOWN  
SHEET 22 OF 23