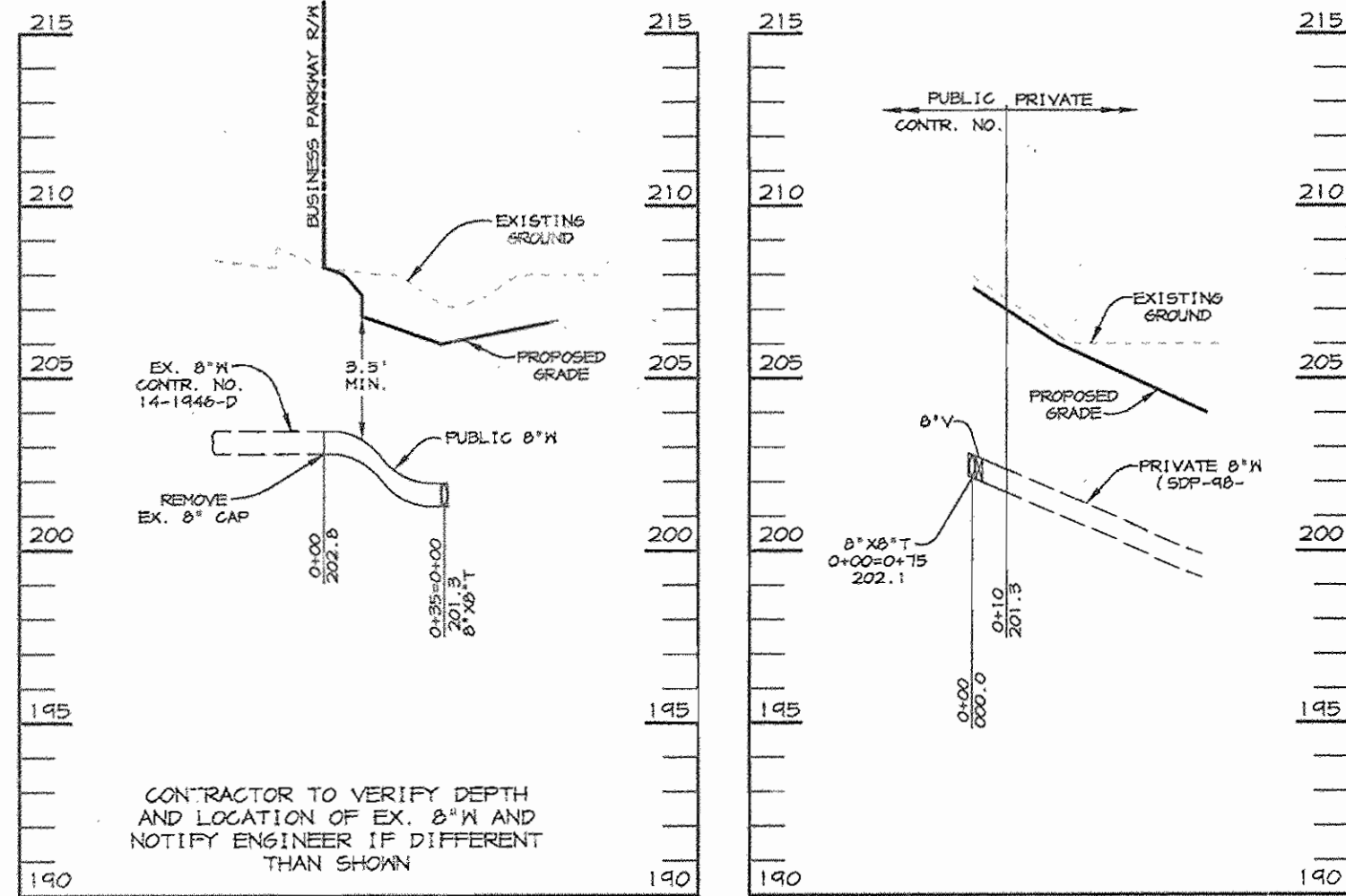


WATER PROFILE

SCALE: HOR. - 1"=50' VERT. - 1"=5'



WATER PROFILE

SCALE: HOR. - 1"=50' VERT. - 1"=5'

WATER PROFILE

SCALE: HOR. - 1"=50' VERT. - 1"=5'

QUANTITIES

ITEMS	QUANTITIES ESTIMATED	AS-BUILT		
		QUANTITIES	TYPE	MANUFACTURER / SUPPLIER
8" WATER	361 LF			
6" WATER	110 LF			
8" X 6" R	2 EA.			
8" X 8" T	2 EA.			
8" V	2 EA.			
6" V	2 EA.			
FIRE HYDRANTS	2 EA.			
8" 1/2 HB	1 EA.			

NAME OF UTILITY CONTRACTOR:

Sediment control measures for this contract will be implemented in accordance with Section 219 of the Specifications and as shown on SDP-98-78

CHECKBOX	
AS-BUILT DATE	
SURVEY AND DRAFTING DIVISION	

Review for Howard Soil Conservation District and meets technical requirements.

Debra Simmons 2/19/98
NATURAL RESOURCES CONSERVATION SERVICE DATE

This plan is approved for sediment control by the Howard Soil Conservation District.

John P. Roberts 2/19/98
HOWARD SOIL CONSERVATION DISTRICT DATE

DEPARTMENT OF PUBLIC WORKS
HOWARD COUNTY, MARYLAND

DEPARTMENT OF PLANNING & ZONING
HOWARD COUNTY, MARYLAND

RIEMER MUEGGE & ASSOCIATES, INC.
ENGINEERING • ENVIRONMENTAL SERVICES • PLANNING • SURVEYING
6818 Centre Park Drive, Columbia, Maryland 21045
tel 410.997.6900 fax 410.997.9262
FILE: 97350/951.DWG

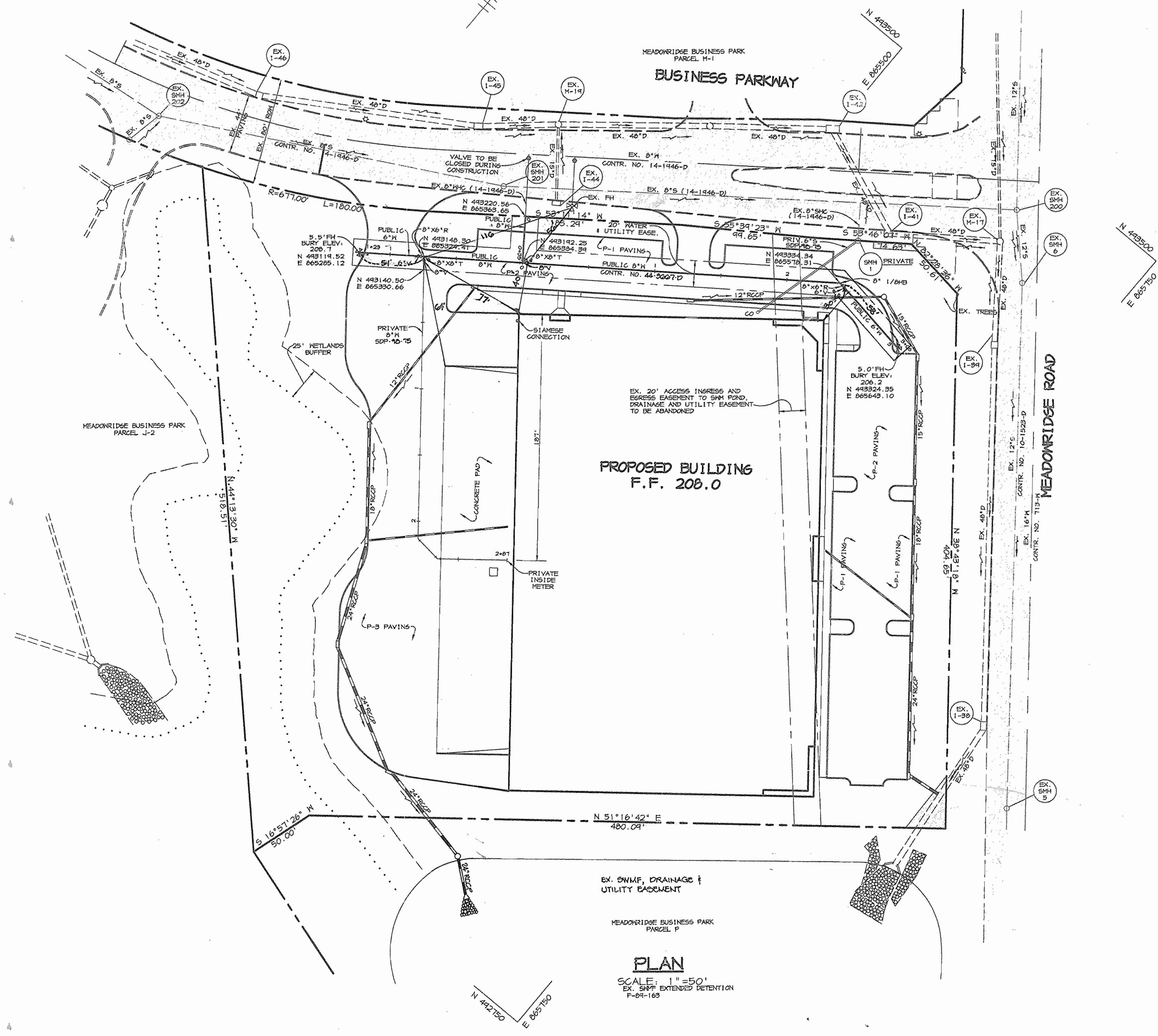


J. Parekh
JAYKANT D. PAREKH # 19146

DES. BLM	
DRN. BLM	
CHK. C.J.R.	
DATE: 2-5-98	
BY NO.	
KCI 1	ASBUILT DATA ADDED TO PLAN
REVISION	
DATE	1/29/98

PLAN AND PROFILES OF WATER MAINS

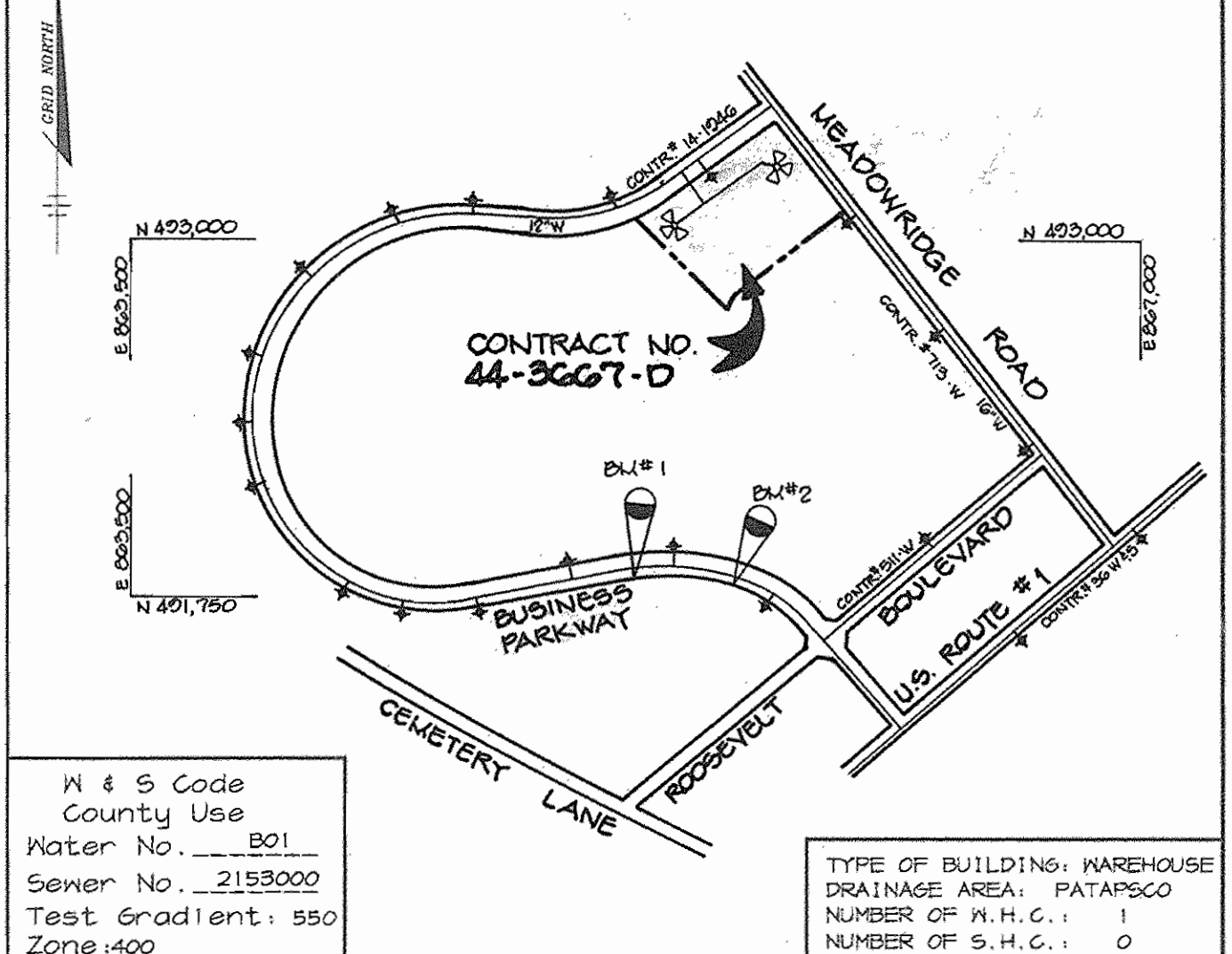
600' SCALE MAP NO. 37 BLOCK NO. 22



PLAN
SCALE: 1"=50'
EX. SHIP EXTENDED DETENTION
1-25-108

BENCHMARKS

BM 305 P.K. NAIL SET IN CURB
N 491,838 E 865,271
BM 306 P.K. NAIL SET IN CURB
N 491,795 E 865,607



N & S Code
County Use
Water No. 801
Sewer No. 2153000
Test Gradient: 550
Zone: 400

VICINITY MAP
SCALE: 1"=600'

GENERAL NOTES

- Approximate location of existing mains are shown. The contractor shall take all necessary precautions to protect existing mains and services and maintain uninterrupted supply. Any damage incurred shall be repaired immediately to the satisfaction of the Engineer at the Contractor's expense.
- All horizontal controls are based on Maryland State Coordinates.
- All vertical controls are based on U.S.G.S. data.
- All pipe elevations shown are invert elevations.
- Clear all utilities by a minimum of 6'. Clear all poles by 2'-0" minimum or tunnel as required. The owner has contacted the utility companies and has made arrangements for bracing of poles as shown on the drawings. In the event the contractor's work requires the bracing of additional poles, any cost incurred by the owner for bracing of additional poles on damages shall be deducted from money owed the contractor. The contractor shall coordinate with the utility companies to schedule the bracing of the poles.
- For details not shown on the drawings, and for materials and construction methods use Howard County Design Manual, Volume IV, Standard Specifications and Detail for Construction, (Latest Edition). The contractor shall have a copy of Volume IV on the job.
- Where test pits have been made on existing utilities, they are noted by the symbol at the location of the test pit. A note or notes containing the results of the test pits or pits is included on the drawings. Existing utilities in the vicinity of the proposed work for which test pits have not been dug shall be located by the contractor two weeks in advance of construction operations at his own expense.
- Contractor shall notify the following utility companies or agencies at least five working days before starting work shown on these plans:
State Highway Administration 531-5533
Baltimore Gas & Electric Co. Contractor Services 850-4620
Baltimore Gas & Electric Co. Underground Damage Control 797-4269
Gas Utility 1-800-251-7111
Colonial Pipeline Co. 795-1340
Bureau of Utilities, Howard County Department of Public Works 313-4900
- Trees and shrubs are to be protected from damage to maximum extent. Trees and shrubs located within the construction strip are not to be removed or damaged by the contractor.
- Contractor shall remove trees, stumps and roots along line of excavation. Payment for such removal shall be included in the unit price bid for construction of the main.
- All water mains to be D.I.P. Class 52 unless otherwise noted.
- Top of all water mains to have a minimum of 3-1/2' cover unless otherwise noted.
- Valves adjacent to trees shall be strapped to trees.
- All fittings shall be buttressed or anchored with concrete in accordance with the Standard Details unless otherwise provided for on the drawings.
- Fire hydrants shall be set to the bury line elevations shown on the drawings. All fire hydrants shall be restrained and buttressed with concrete in accordance with Standard Details. 5011 around the fire hydrant shall be compacted in accordance with Section 1000 and 1005 of the Standard Specifications.
- The contractor shall not operate any water main valves on the existing water system.
- All water house connections shall be for inside meter setting unless otherwise noted on plans or in specifications.
- Contractor is solely responsible for construction means, methods, techniques, sequences, procedures, and safety precautions and programs.
- The fire hydrant shall be installed as per standard detail K.1.11.
- Fire hydrants will be located 3' FROM BACK OF CURB unless otherwise noted.
- The contractor shall notify the Bureau of Highways, Howard County, at (410) 313-7450 at least five (5) working days before any open cut of any county road or boring/jacking operation in County roads for laying water/sewer mains or house connections. The approval of these drawings will constitute compliance with DPM requirements per Section 10.114(d) of the Howard County Code.
- Howard County DPM is hereby granted permission to access private lots shown on these plans in order to maintain public water and/or sewer house connections at the curb stops and/or cleanouts.

MEADOWRIDGE BUSINESS PARK
PARCEL N
1st ELECTION DISTRICT
HOWARD COUNTY, MARYLAND
CONTRACT 44-3067-D

SCALE AS SHOWN
SHEET 1 OF 1