

# CONTRACT NO. 24-3661-D

# SNOWDEN RIDGE

## SECTION 2, AREA 2

## HOWARD COUNTY, MARYLAND

## DEPARTMENT OF PUBLIC WORKS

### GENERAL NOTES

#### PART I

- APPROXIMATE LOCATION OF EXISTING MAINS ARE SHOWN. THE CONTRACTOR SHALL TAKE ALL NECESSARY PRECAUTIONS TO PROTECT EXISTING MAINS AND SERVICES AND MAINTAIN UNINTERRUPTED SUPPLY. ANY DAMAGE INCURRED SHALL BE REPAIRED IMMEDIATELY TO THE SATISFACTION OF THE ENGINEER AT THE CONTRACTOR'S EXPENSE.
- ALL HORIZONTAL CONTROLS ARE BASED ON MARYLAND STATE COORDINATES.
- ALL VERTICAL CONTROLS ARE BASED ON U.S.G.S. DATA.
- ALL PIPE ELEVATIONS SHOWN ARE INVERT ELEVATIONS, UNLESS OTHERWISE NOTED.
- CLEAR ALL UTILITIES BY A MINIMUM OF 12' CLEAR ALL POLES BY 2'-0" MINIMUM OR TUNNEL AS REQUIRED. THE OWNER HAS CONTACTED THE UTILITY COMPANIES AND HAS MADE ARRANGEMENTS FOR BRACING OF POLES AS SHOWN ON THE DRAWINGS. IN THE EVENT THE CONTRACTOR'S WORK REQUIRES THE BRACING OF ADDITIONAL POLES, ANY COST INCURRED BY THE OWNER FOR BRACING OF ADDITIONAL POLES OR DAMAGES SHALL BE DEDUCTED FROM MONEY OWED THE CONTRACTOR. THE CONTRACTOR SHALL COORDINATE WITH THE UTILITY COMPANIES TO SCHEDULE THE BRACING OF THE POLES.
- FOR DETAILS NOT SHOWN ON THE DRAWINGS AND FOR MATERIALS AND CONSTRUCTION METHODS USE HOWARD COUNTY DESIGN MANUAL VOLUME IV, STANDARD SPECIFICATIONS AND DETAIL FOR CONSTRUCTION (LATEST EDITION). THE CONTRACTOR SHALL HAVE A COPY OF VOLUME IV ON THE JOB.
- WHERE TEST PITS HAVE BEEN MADE ON EXISTING UTILITIES, THEY ARE NOTED BY THE SYMBOL AT THE LOCATION OF THE TEST PIT. A NOTE OR NOTES CONTAINING THE RESULTS OF THE TEST PIT OR PITS IS INCLUDED ON THE DRAWINGS. EXISTING UTILITIES IN THE VICINITY OF THE PROPOSED WORK FOR WHICH TEST PITS HAVE NOT BEEN DUG SHALL BE LOCATED BY THE CONTRACTOR TWO WEEKS IN ADVANCE OF CONSTRUCTION OPERATIONS AT HIS OWN EXPENSE.
- CONTRACTOR SHALL NOTIFY THE FOLLOWING UTILITY COMPANIES OR AGENCIES AT LEAST FIVE WORKING DAYS BEFORE STARTING WORK.

#### SHOWN ON THESE PLANS:

STATE HIGHWAY ADMINISTRATION	410-531-6535
BG&E CO. CONTRACT SERVICES	410-850-4620
BG&E CO. UNDER GROUND DAMAGE CONTROL	410-787-9068
MISS UTILITY	1-800-257-7777
COLONIAL PIPELINE CO.	410-795-1990
HOWARD COUNTY DEPARTMENT OF PUBLIC WORKS BUREAU OF UTILITIES	410-313-4900

- TREES AND SHRUBS ARE TO BE PROTECTED FROM DAMAGE TO MAXIMUM EXTENT. TREES AND SHRUBS LOCATED WITHIN THE CONSTRUCTION STRIP ARE NOT TO BE REMOVED OR DAMAGED BY THE CONTRACTOR.
- CONTRACTOR SHALL REMOVE TREES, STUMPS, AND ROOTS ALONG LINE OF EXCAVATION. PAYMENT FOR SUCH REMOVAL SHALL BE INCLUDED IN THE UNIT PRICE FOR CONSTRUCTION OF THE MAIN.
- THE CONTRACTOR SHALL NOTIFY THE BUREAU OF HIGHWAYS, HOWARD COUNTY, AT (410) 313-2450 AT LEAST FIVE WORKING DAYS BEFORE ANY OPEN CUT OF ANY COUNTY ROAD OR BORING/JACKING OPERATION IN COUNTY ROADS FOR LAYING WATER/SEWER MAINS OR HOUSE CONNECTIONS. THE APPROVAL OF THESE DRAWINGS WILL CONSTITUTE COMPLIANCE WITH DPW REQUIREMENTS PER SECTION 18.14(A) OF THE HOWARD COUNTY CODE.

#### PART II - WATER

- ALL WATER MAINS TO BE D.I.P. CLASS 52 UNLESS OTHERWISE NOTED.
- TOPS OF ALL WATER MAINS TO HAVE A MINIMUM OF 3'-1/2" COVER UNLESS OTHERWISE NOTED.
- VALVES ADJACENT TO TEES SHALL BE STRAPPED TO TEES.
- ALL FITTINGS SHALL BE BUTTRESSED OR ANCHORED WITH CONCRETE IN ACCORDANCE WITH THE STANDARD DETAILS UNLESS OTHERWISE PROVIDED FOR ON THE DRAWINGS.
- FIRE HYDRANTS SHALL BE SET TO THE BURY LINE ELEVATIONS SHOWN ON THE DRAWINGS. ALL FIRE HYDRANTS SHALL BE RESTRAINED AND BUTTRESSED WITH CONCRETE IN ACCORDANCE WITH STANDARD DETAILS. SOIL AROUND THE FIRE HYDRANT SHALL BE COMPACTED IN ACCORDANCE WITH SECTION 1000 AND 1005 OF THE STANDARD SPECIFICATIONS.
- THE CONTRACTOR SHALL NOT OPERATE ANY WATER MAIN VALVES ON THE EXISTING WATER SYSTEM.
- ALL WATER HOUSE CONNECTIONS SHALL BE FOR INSIDE METER SETTING UNLESS OTHERWISE NOTED ON PLANS OR IN SPECIFICATIONS.
- ALL SINGLE WATER HOUSE CONNECTIONS SHALL BE 1" ALL DOUBLE WATER HOUSE CONNECTIONS SHALL BE 1 1/2" WITH 1" BRANCHES.
- ALL WATER METERS SHALL BE 3/4"

#### PART III - SEWER

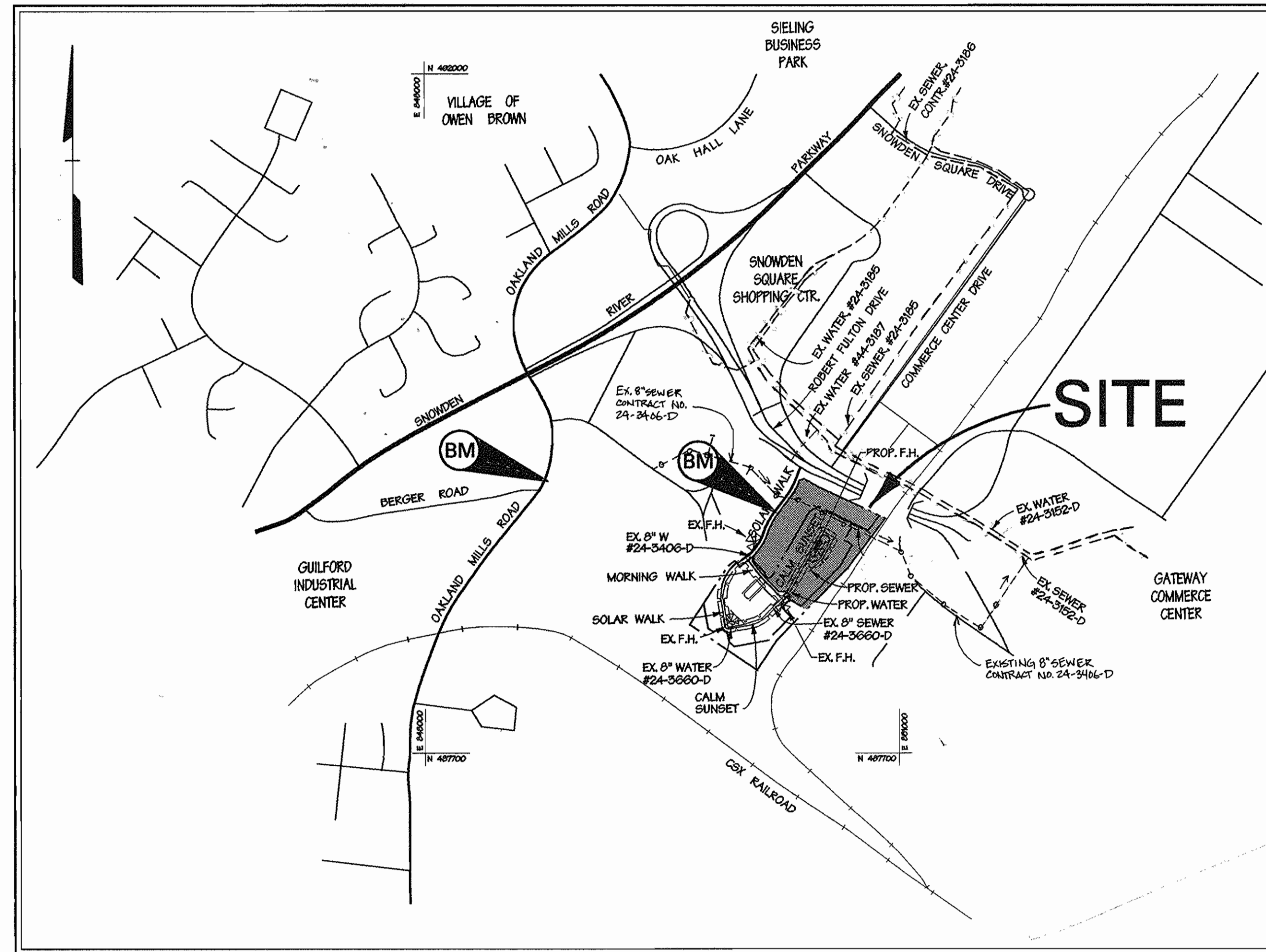
- ALL SEWER MAINS SHALL BE D.I.P. OR P.V.C. UNLESS OTHERWISE NOTED.
- THE CONTRACTOR SHALL PROVIDE A JOINT IN ALL SEWER MAINS WITHIN 2'-0" OF EXTERIOR MANHOLE WALL.
- ALL MANHOLES SHALL BE 4'-0" INSIDE DIAMETER UNLESS OTHERWISE NOTED.
- FORCE MAINS SHALL BE D.I.P. ONLY.
- MANHOLES SHOWN WITH 12" AND 18" WALLS ARE FOR BRICK MANHOLES ONLY.
- MANHOLES DESIGNATED W.T. IN PLAN AND PROFILE SHALL HAVE WATER TIGHT FRAME AND COVERS, STANDARD DETAIL 05.52, WHERE WATER TIGHT MANHOLE FRAME AND COVER IS USED SET 10" ABOVE FINISHED GRADE UNLESS OTHERWISE NOTED ON THE DRAWINGS.
- HOUSE(S) WITH THE SYMBOL "C.N.S." INDICATES THAT CELLAR CANNOT BE SERVED.
- ALL SEWER HOUSE CONNECTIONS SHALL BE 4".

SEWER HOUSE CONNECTION TABLE

LOT	INV. AT #	MIN. C	SLOPE	LOT	INV. AT #	MIN. C	SLOPE
216	339.45	342.14	2%	221	341.80	344.90	2%
217	340.69	343.79	2%	222	342.50	345.40	2%
218	340.73	343.75	2%	223	342.88	345.86	2%
219	340.90	344.00	2%	224	343.37	346.27	2%
220	340.85	343.85	2%	225	344.04	347.02	2%
221	341.14	344.33	2%	226	344.56	347.46	2%
222	341.23	344.25	2%	227	345.08	348.06	2%
223	341.39	344.49	2%	228	345.22	348.12	2%
224	341.17	344.19	2%	229	341.64	343.67	5%
225	341.20	344.30	2%	240	341.65	343.97	2%
226	341.30	344.32	2%	241	341.76	344.16	2%
227	341.40	344.50	2%	242	341.85	344.17	2%
228	341.50	344.52	2%	243	341.96	344.36	2%
229	341.60	344.70	2%	244	342.03	344.35	2%
230	341.70	344.72	2%	245	342.14	345.19	2%

ALL WATER AND SEWER HOUSE CONNECTIONS UNDER THIS CONTRACT ARE TO BE EXTENDED FROM THE MAIN TO THE EDGE OF EASEMENT OR RIGHT OF WAY.

SEWER HOUSE CONNECTIONS FOR LOTS 195-215 PROVIDED FOR UNDER CONTRACT NO. 24-3660-D.



### LOCATION MAP

SCALE: 1" = 600'

TYPE OF BUILDING:	TOWNHOUSE
NO. OF LOTS / PARCELS:	55
NO. OF WATER HOUSE CONNECTIONS:	51
NO. OF SEWER HOUSE CONNECTIONS:	22
DRAINAGE AREA:	LITTLE PATUKENT
TREATMENT PLANT:	LITTLE PATUKENT WATER QUALITY MANAGEMENT CENTER, SAVAGE, HOWARD COUNTY
WATER CODE:	506
SEWER CODE:	4800000
TEST GRADIENT:	700

#### BENCHMARK

##### BM-1 DESCRIPTION

1/2" CUT TOP OF BOLT  
WEST SIDE G&E TRANS.  
TOWER # 422442  
ELEV. = 274.29'

##### BM-2 DESCRIPTION

CUT NAIL IN G&E POLE  
ELEV. = 387.97'

\* LOCAL BENCHMARKS ABOVE ESTABLISHED FROM HOWARD COUNTY SURVEY CONTROL POINTS #2245002 AND #2245003.

\*\* 22 SEWER HOUSE CONNECTIONS PROVIDED IN CONTRACT #24-3660-D

#### QUANTITIES

ITEM	QUANTITIES ESTIMATED	AS-BUILT		
		QUANTITIES	TYPE	MANUFACTURER/SUPPLIER
8\"/>				

REVIEWED FOR NATURAL RESOURCES CONSERVATION SERVICE AND MEETS TECHNICAL REQUIREMENT

*Cheyl Simmons* 9/21/98  
SIGNATURE DATE

THIS DEVELOPMENT PLAN IS APPROVED FOR SOIL EROSION AND SEDIMENT CONTROL BY THE HOWARD COUNTY CONSERVATION DISTRICT.

APPROVED *John F. Robertson* 9/21/98  
HOWARD S.C.D. DATE

SEDIMENT CONTROL MEASURES WILL BE IMPLEMENTED IN ACCORDANCE WITH SECTION 219 OF THE SPECIFICATIONS AND WITH ROAD CONSTRUCTION PLANS F-98-51. (F-98-49)

DEPARTMENT OF PUBLIC WORKS  
HOWARD COUNTY, MARYLAND

*Robert Beatty* 9-17-98  
CHIEF - BUREAU OF UTILITIES - DATE

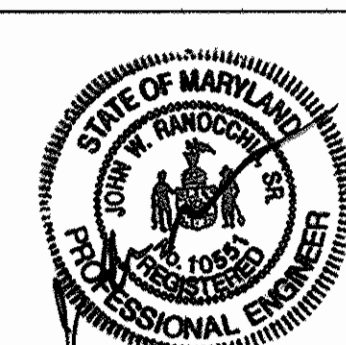
DEPARTMENT OF PLANNING & ZONING  
HOWARD COUNTY, MARYLAND

*Harold W. Williams* 9/21/98  
CHIEF - DEVELOPMENT ENGINEERING DIVISION - DATE

**DMW**  
Daft · McCune · Walker, Inc.

A Team of Land Planners, Landscape Architects, Engineers, Surveyors & Environmental Professionals

200 East Pennsylvania Avenue  
Towson, Maryland 21286  
410 296 3333  
Fax 296 4705



DESIGN BY:	JLS
DRAWN BY:	JMH
CHECKED BY:	JLS
DATE:	Sept. 3, 1998
BY NO.	
REVISION	
DATE	

600 SCALE MAP NO.	42	BLOCK NO.	5
-------------------	----	-----------	---

TITLE SHEET

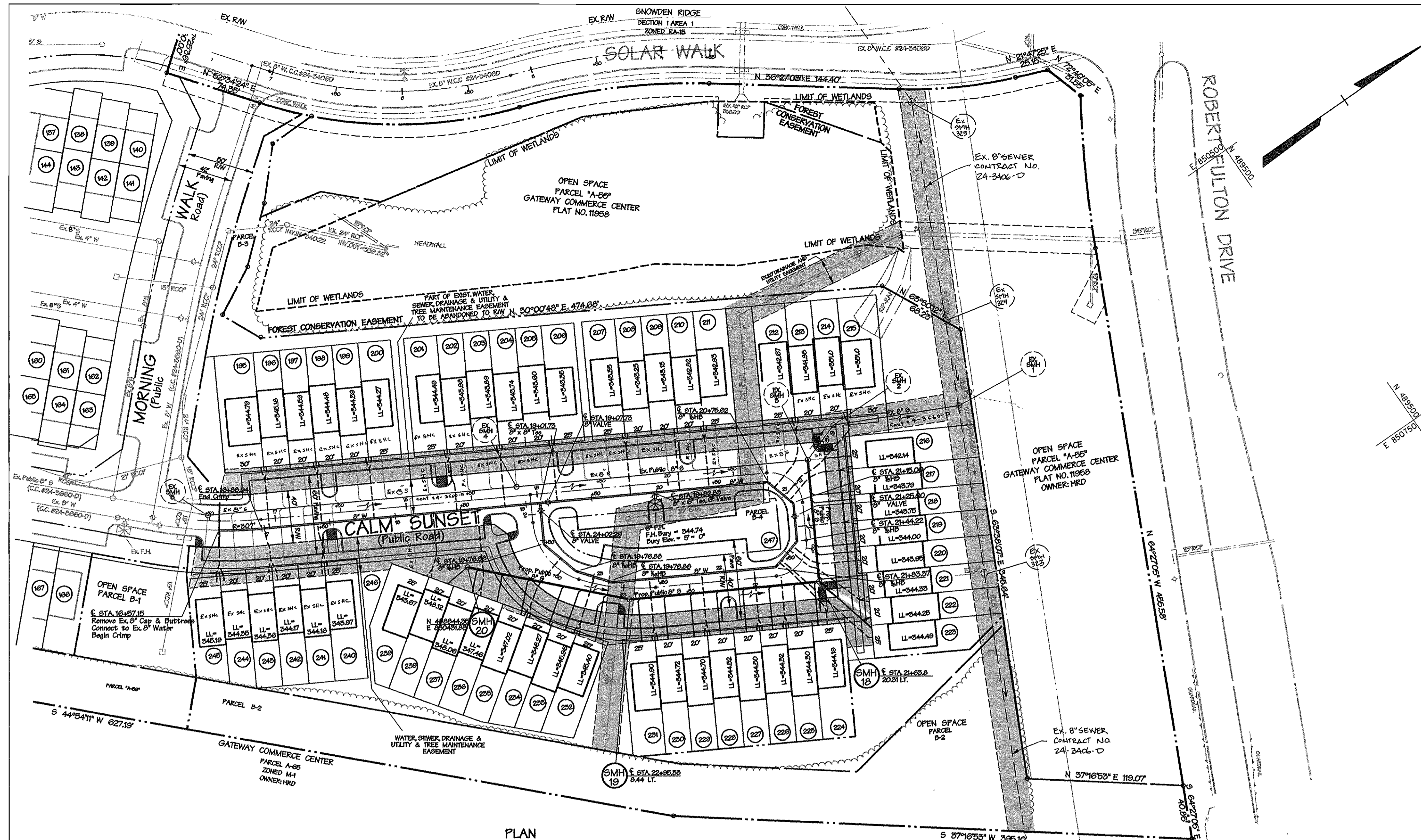
### SNOWDEN RIDGE

SECTION 2, AREA 2, LOTS 195-245  
TAX MAP 42 PARCEL 513  
6TH ELECTION DISTRICT OF HOWARD COUNTY, MARYLAND  
CONTRACT NO. 24-3661-D

SCALE AS SHOWN

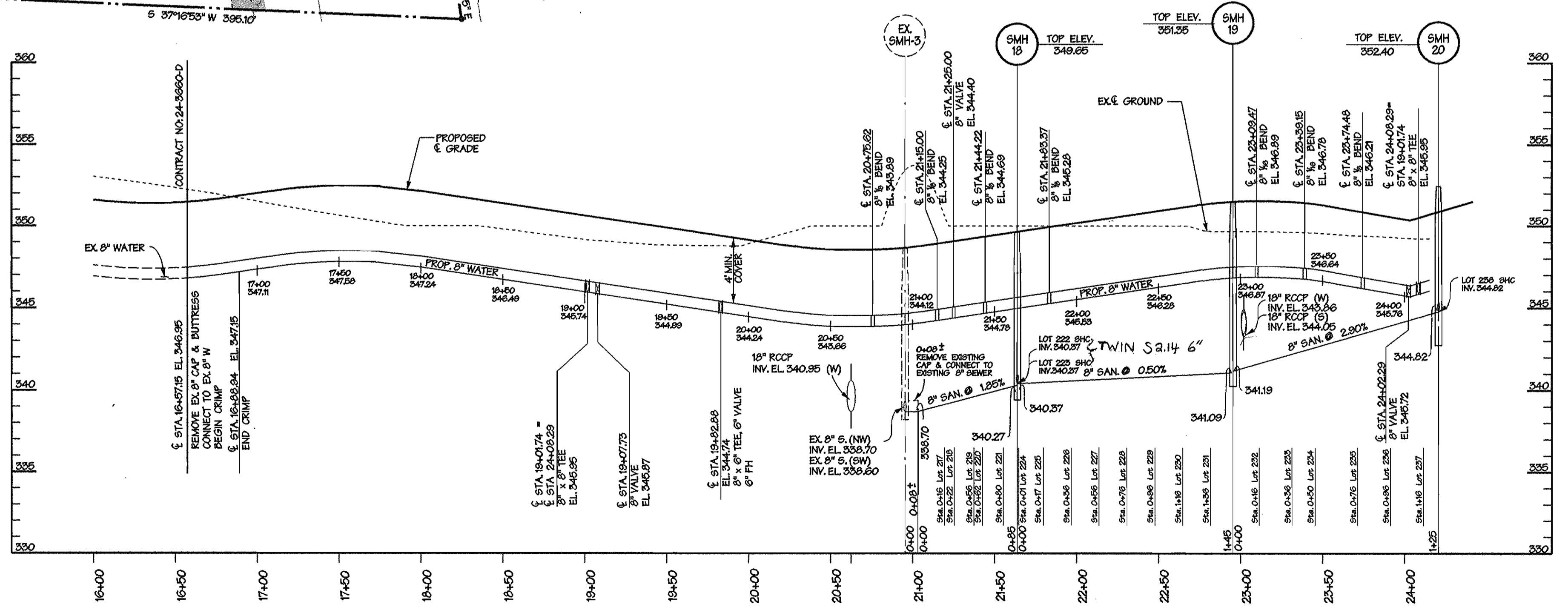
SHEET 1 OF 2





PLAN  
SCALE: HORIZ. 1"=50'

NOTES:  
1) LOWER LEVEL ELEVATIONS SHOWN ON THIS PLAN CORRESPOND TO THE MINIMUM SEWERABLE ELEVATION AS SHOWN ON SHEET 1 OF 2.  
2) ALL FRONT LOT DIMENSIONS ARE 20' UNLESS OTHERWISE NOTED.

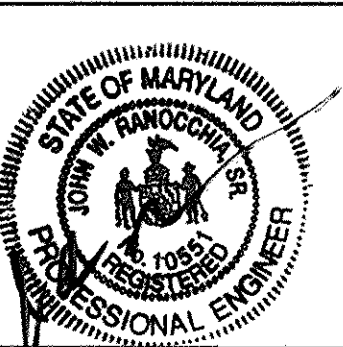


CALM SUNSET  
SCALE: HORIZ. 1"=50'  
VERT. 1"=5'

DEPARTMENT OF PUBLIC WORKS  
HOWARD COUNTY, MARYLAND  
*Robert Berman* 9-17-98  
CHIEF - BUREAU OF UTILITIES - DATE

DEPARTMENT OF PLANNING & ZONING  
HOWARD COUNTY, MARYLAND  
*Harold J. ...*  
CHIEF - DEVELOPMENT ENGINEERING DIVISION - DATE

**DMW**  
Daft · McCune · Walker, Inc.  
A Team of Land Planners, 200 East Pennsylvania Avenue  
Landscape Architects, Towson, Maryland 21286  
Engineers, Surveyors & Environmental Professionals 410 296 3333  
Fax 296 4705



DESIGN BY:	JLS
DRAWN BY:	JMH
CHECKED BY:	JLS
DATE:	Sept. 3, 1998
BY NO.	REVISION
DATE	600 SCALE MAP NO. 42 BLOCK NO. 5

WATER AND SEWER  
PLAN AND PROFILE

**SNOWDEN RIDGE**  
SECTION 2, AREA 2, LOTS 195-245  
TAX MAP 42 PARCEL 513  
6TH ELECTION DISTRICT OF HOWARD COUNTY, MARYLAND  
CONTRACT NO. 24-3661-D

SCALE  
1"=50'  
SHEET  
2 OF 2

HWL Sep 9 08:51:22 1998 PL 015160 015160.mxd



# CONTRACT NO. 24-3661-D

# SNOWDEN RIDGE

## SECTION 2, AREA 2

## HOWARD COUNTY, MARYLAND

## DEPARTMENT OF PUBLIC WORKS

### GENERAL NOTES

#### PART I

1. APPROXIMATE LOCATION OF EXISTING MAINS ARE SHOWN. THE CONTRACTOR SHALL TAKE ALL NECESSARY PRECAUTIONS TO PROTECT EXISTING MAINS AND SERVICES AND MAINTAIN UNINTERRUPTED SUPPLY. ANY DAMAGE INCURRED SHALL BE REPAIRED IMMEDIATELY TO THE SATISFACTION OF THE ENGINEER AT THE CONTRACTOR'S EXPENSE.
2. ALL HORIZONTAL CONTROLS ARE BASED ON MARYLAND STATE COORDINATES.
3. ALL VERTICAL CONTROLS ARE BASED ON U.S.G.S. DATA.
4. ALL PIPE ELEVATIONS SHOWN ARE INVERT ELEVATIONS, UNLESS OTHERWISE NOTED.
5. CLEAR ALL UTILITIES BY A MINIMUM OF 12" CLEAR ALL POLES BY 2'-0" MINIMUM OR TUNNEL AS REQUIRED. THE OWNER HAS CONTACTED THE UTILITY COMPANIES AND HAS MADE ARRANGEMENTS FOR BRACING OF POLES AS SHOWN ON THE DRAWINGS. IN THE EVENT THE CONTRACTOR'S WORK REQUIRES THE BRACING OF ADDITIONAL POLES, ANY COST INCURRED BY THE OWNER FOR BRACING OF ADDITIONAL POLES OR DAMAGES SHALL BE DEDUCTED FROM MONEY OWED THE CONTRACTOR. THE CONTRACTOR SHALL COORDINATE WITH THE UTILITY COMPANIES TO SCHEDULE THE BRACING OF THE POLES.
6. FOR DETAILS NOT SHOWN ON THE DRAWINGS AND FOR MATERIALS AND CONSTRUCTION METHODS USE HOWARD COUNTY DESIGN MANUAL, VOLUME IV, STANDARD SPECIFICATIONS AND DETAIL FOR CONSTRUCTION (LATEST EDITION). THE CONTRACTOR SHALL HAVE A COPY OF VOLUME IV ON THE JOB.
7. WHERE TEST PITS HAVE BEEN MADE ON EXISTING UTILITIES, THEY ARE NOTED BY THE SYMBOL AT THE LOCATION OF THE TEST PIT. A NOTE OR NOTES CONTAINING THE RESULTS OF THE TEST PIT OR PITS IS INCLUDED ON THE DRAWINGS. EXISTING UTILITIES IN THE VICINITY OF THE PROPOSED WORK FOR WHICH TEST PITS HAVE NOT BEEN DUG SHALL BE LOCATED BY THE CONTRACTOR TWO WEEKS IN ADVANCE OF CONSTRUCTION OPERATIONS AT HIS OWN EXPENSE.
8. CONTRACTOR SHALL NOTIFY THE FOLLOWING UTILITY COMPANIES OR AGENCIES AT LEAST FIVE WORKING DAYS BEFORE STARTING WORK:

SHOWN ON THESE PLANS:

STATE HIGHWAY ADMINISTRATION	410-531-5535
BIGGE CO. CONTRACTOR SERVICES	410-850-4920
BIGGE CO. UNDER GROUND DAMAGE CONTROL	410-787-9068
MISS UTILITY	1-800-287-7777
COLONIAL PIPELINE CO.	410-796-1390
HOWARD COUNTY DEPARTMENT OF PUBLIC WORKS	
BUREAU OF UTILITIES	410-313-4900

9. TREES AND SHRUBS ARE TO BE PROTECTED FROM DAMAGE TO MAXIMUM EXTENT. TREES AND SHRUBS LOCATED WITHIN THE CONSTRUCTION STRIP ARE NOT TO BE REMOVED OR DAMAGED BY THE CONTRACTOR.
10. CONTRACTOR SHALL REMOVE TREES, STUMPS, AND ROOTS ALONG LINE OF EXCAVATION. PAYMENT FOR SUCH REMOVAL SHALL BE INCLUDED IN THE UNIT PRICE BID FOR CONSTRUCTION OF THE MAIN.
11. THE CONTRACTOR SHALL NOTIFY THE BUREAU OF HIGHWAYS, HOWARD COUNTY, AT (410) 313-2450 AT LEAST FIVE WORKING DAYS BEFORE ANY OPEN CUT OF ANY COUNTY ROAD OR BORING/JACKING OPERATION IN COUNTY ROADS FOR LAYING WATERSEWER MAINS OR HOUSE CONNECTIONS. THE APPROVAL OF THESE DRAWINGS WILL CONSTITUTE COMPLIANCE WITH DPW REQUIREMENTS PER SECTION 18.114(A) OF THE HOWARD COUNTY CODE.

#### PART II - WATER

1. ALL WATER MAINS TO BE D.I.P. CLASS 52 UNLESS OTHERWISE NOTED.
2. TOPS OF ALL WATER MAINS TO HAVE A MINIMUM OF 3-1/2" COVER UNLESS OTHERWISE NOTED.
3. VALVES ADJACENT TO TEES SHALL BE STRAPPED TO TEES.
4. ALL FITTINGS SHALL BE BUTTRESSED OR ANCHORED WITH CONCRETE IN ACCORDANCE WITH THE STANDARD DETAILS UNLESS OTHERWISE PROVIDED FOR ON THE DRAWINGS.
5. FIRE HYDRANTS SHALL BE SET TO THE BURY LINE ELEVATIONS SHOWN ON THE DRAWINGS. ALL FIRE HYDRANTS SHALL BE RESTRAINED AND BUTTRESSED WITH CONCRETE IN ACCORDANCE WITH STANDARD DETAILS. SOIL AROUND THE FIRE HYDRANT SHALL BE COMPACTED IN ACCORDANCE WITH SECTION 1000 AND 1005 OF THE STANDARD SPECIFICATIONS.
6. THE CONTRACTOR SHALL NOT OPERATE ANY WATER MAIN VALVES ON THE EXISTING WATER SYSTEM.
7. ALL WATER HOUSE CONNECTIONS SHALL BE FOR INSIDE METER SETTING UNLESS OTHERWISE NOTED ON PLANS OR IN SPECIFICATIONS.
8. ALL SINGLE WATER HOUSE CONNECTIONS SHALL BE 1" WITH 1" BRANCHES.
9. ALL WATER METERS SHALL BE 3/4"

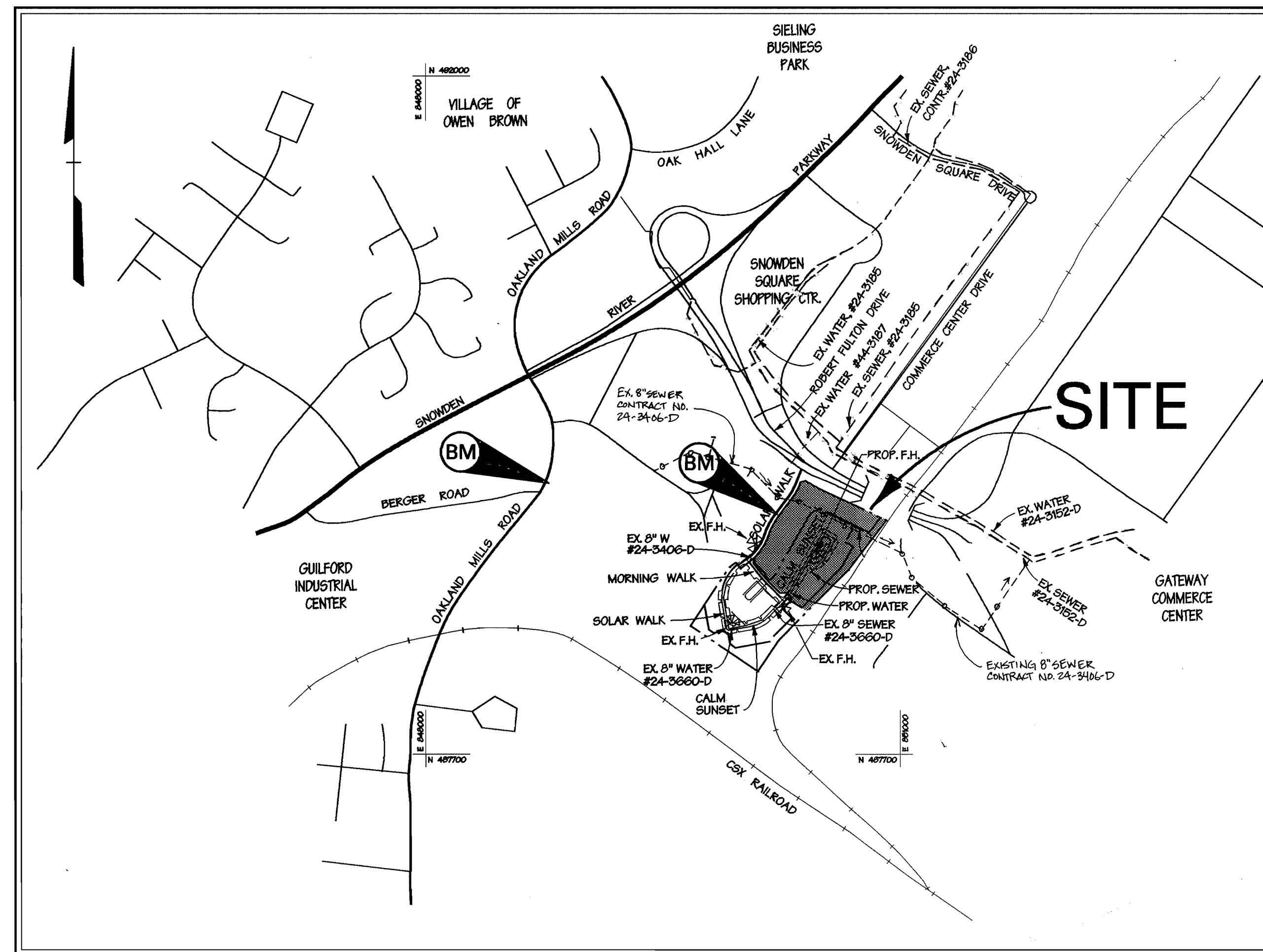
#### PART III - SEWER

1. ALL SEWER MAINS SHALL BE D.I.P. OR P.V.C. UNLESS OTHERWISE NOTED.
2. THE CONTRACTOR SHALL PROVIDE A JOINT IN ALL SEWER MAINS WITHIN 2'-0" OF EXTERIOR MANHOLE WALL.
3. ALL MANHOLES SHALL BE 4'-0" INSIDE DIAMETER UNLESS OTHERWISE NOTED.
4. FORCE MAINS SHALL BE D.I.P. ONLY.
5. MANHOLES SHOWN WITH 12" AND 16" WALLS ARE FOR BRICK MANHOLES ONLY.
6. MANHOLES DESIGNATED W.T. IN PLAN AND PROFILE SHALL HAVE WATERTIGHT FRAME AND COVERS, STANDARD DETAIL G652, WHERE WATERTIGHT MANHOLE FRAME AND COVER IS USED, SET TOP OF FRAME 1'-0" ABOVE FINISHED GRADE UNLESS OTHERWISE NOTED ON THE DRAWINGS.
7. HOUSE(S) WITH THE SYMBOL "C.N.S." INDICATES THAT CELLAR CANNOT BE SERVED.
8. ALL SEWER HOUSE CONNECTIONS SHALL BE 4".

#### SEWER HOUSE CONNECTION TABLE

LOT	INV. AT E	MIN. C	SLOPE	LOT	INV. AT E	MIN. C	SLOPE
216	339.46	342.14	2%	231	341.80	344.90	2%
217	340.69	343.79	2%	232	342.50	345.40	2%
218	340.75	343.75	2%	233	342.98	345.96	2%
219	340.90	344.00	2%	234	343.37	346.27	2%
220	340.93	343.95	2%	235	344.04	347.02	2%
221	341.14	344.33	2%	236	344.56	347.46	2%
222	341.23	344.25	2%	237	345.08	348.06	2%
223	341.39	344.49	2%	238	345.22	348.12	2%
224	341.17	344.19	2%	239	341.64	343.67	5%
225	341.20	344.30	2%	240	341.65	343.97	2%
226	341.30	344.32	2%	241	341.76	344.16	2%
227	341.40	344.50	2%	242	341.85	344.17	2%
228	341.50	344.52	2%	243	341.96	344.36	2%
229	341.60	344.70	2%	244	342.03	344.35	2%
230	341.70	344.72	2%	245	342.14	345.19	2%

ALL WATER AND SEWER HOUSE CONNECTIONS UNDER THIS CONTRACT ARE TO BE EXTENDED FROM THE MAIN TO THE EDGE OF EASEMENT OR RIGHT OF WAY.  
SEWER HOUSE CONNECTIONS FOR LOTS 196-215 PROVIDED FOR UNDER CONTRACT NO. 24-3660-D.



### LOCATION MAP

SCALE: 1" = 600'

TYPE OF BUILDING:	TOWNHOUSE
NO. OF LOTS / PARCELS:	53
NO. OF WATER HOUSE CONNECTIONS:	51
NO. OF SEWER HOUSE CONNECTIONS:	22,***
DRAINAGE AREA:	LITTLE PATUXENT
TREATMENT PLANT:	LITTLE PATUXENT
	LITTLE PATUXENT WATER QUALITY MANAGEMENT CENTER, SAVAGE, HOWARD COUNTY
WATER CODE:	E06
SEWER CODE:	4800000
TEST GRADIENT:	700

#### BENCHMARK

BM-1 DESCRIPTION  
"X" CUT TOP OF BOLT  
WEST SIDE G&E TRANS.  
TOWER # 425442  
ELEV. = 374.23'

BM-2 DESCRIPTION  
CUT NAIL IN G&E POLE  
ELEV. = 337.37'

\* LOCAL BENCHMARKS ABOVE ESTABLISHED FROM HOWARD COUNTY SURVEY CONTROL POINTS #2243002 AND #2243005.

\*\* \*\* SEWER HOUSE CONNECTIONS PROVIDED IN CONTRACT #24-3660-D

ITEM	QUANTITIES ESTIMATED	QUANTITIES AS-BUILT		
		QUANTITIES	TYPE	MANUFACTURER/SUPPLIER
8" WATER	685 LF	746	D.I.P. 52	ATLANTIC STATES
6" WATER	30 LF	10	D.I.P. 52	"
8" SEWER	388 LF	385	P.V.C. SDR26	J. M. MANUFACTURING
4" SEWER	754 LF	750	P.V.C. SDR26	"
1" W.C.	688 LF	420	TYP. K. COP.	CAMBRIDGE - LEE
12" W.C.	980 LF	1010	"	"
FIRE HYDRANT	1 EACH	1	5" F.H.	MOELLER CO.
4" DIA. MANHOLE	3 EACH	4	4' DIA.	ATLANTIC STATES
6" VALVE	4 EACH	3	M.J. GATE V.	MOELLER CO.
6" VALVE	1 EACH	1	M.J. GATE V.	"
6" x 6" TEE	1 EACH	1	D.I. M.J. TEE	TYLER PIPE
6" x 6" TEE	1 EACH	1	"	"

NAME OF UTILITY CONTRACTOR: GAINES COMPANY  
SURVEY AND DRAFTING DIVISION AS-BUILT DATE: \_\_\_\_\_

REVIEWED FOR NATURAL RESOURCES CONSERVATION SERVICE AND MEETS TECHNICAL REQUIREMENT

*Cheryl Simmons* 9/21/98  
SIGNATURE DATE

THIS DEVELOPMENT PLAN IS APPROVED FOR SOIL EROSION AND SEDIMENT CONTROL BY THE HOWARD COUNTY CONSERVATION DISTRICT.

APPROVED *John F. Robertson* 9/21/98  
HOWARD S.C.D. DATE

SEDIMENT CONTROL MEASURES WILL BE IMPLEMENTED IN ACCORDANCE WITH SECTION 219 OF THE SPECIFICATIONS AND WITH ROAD CONSTRUCTION PLANS F-98-41, (F-98-49)

DEPARTMENT OF PUBLIC WORKS  
HOWARD COUNTY, MARYLAND

*Robert Beatty* 9-17-98  
CHIEF - BUREAU OF UTILITIES - DATE

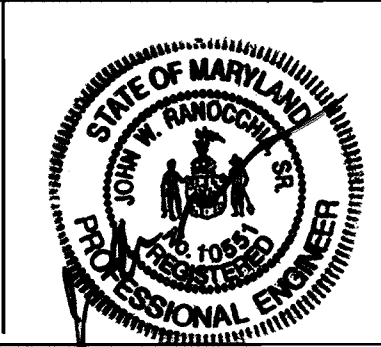
DEPARTMENT OF PLANNING & ZONING  
HOWARD COUNTY, MARYLAND

*John W. Williams* 9/21/98  
CHIEF - DEVELOPMENT ENGINEERING DIVISION - DATE

**DMW**  
Daft · McCune · Walker, Inc.

A Team of Land Planners, Landscape Architects, Engineers, Surveyors & Environmental Professionals

200 East Pennsylvania Avenue  
Towson, Maryland 21286  
410 296 3333  
Fax 296 4705



DESIGN BY:	JLS			
DRAWN BY:	JMH			
CHECKED BY:	JLS			
DATE:	Sept. 3, 1998	K.C.I. 2	AS-BUILT CONDITIONS ADDED TO PLAN	8/2/99
BY NO.			REVISION	DATE

TITLE SHEET

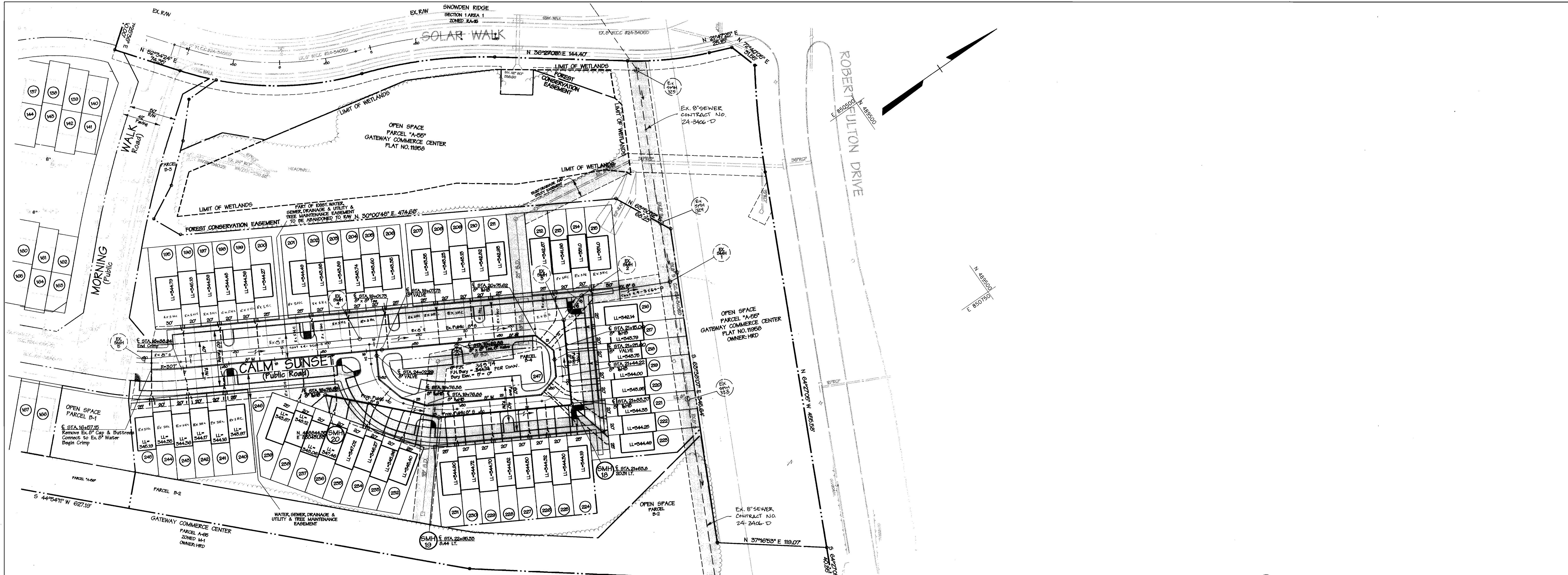
600 SCALE MAP NO. 42 BLOCK NO. 5

SCALE AS SHOWN

**SNOWDEN RIDGE**  
SECTION 2, AREA 2, LOTS 195-245  
TAX MAP 42 PARCEL 513  
6TH ELECTION DISTRICT OF HOWARD COUNTY, MARYLAND  
CONTRACT NO. 24-3661-D

SHEET 1 OF 2

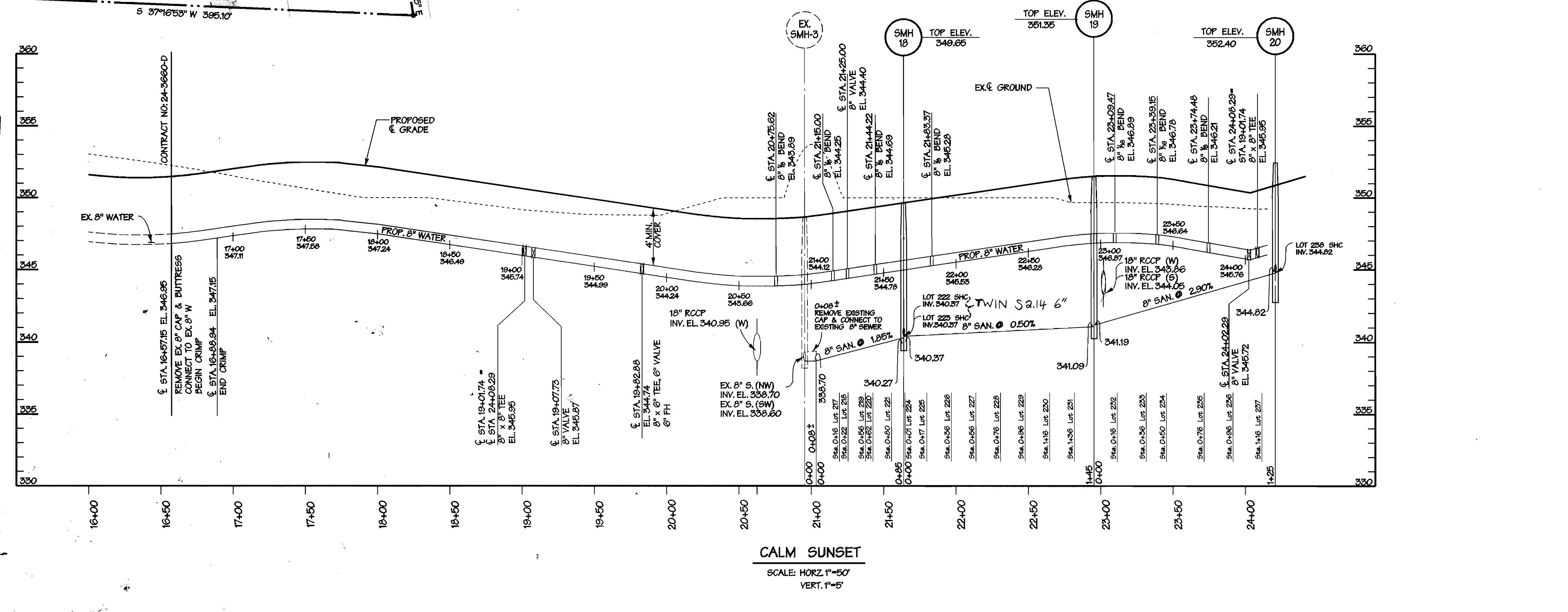




**PLAN**  
SCALE: HORIZ. 1"=50'

NOTES:  
1. LOWER LEVEL ELEVATIONS SHOWN ON THIS PLAN CORRESPOND TO THE MINIMUM SEWERABLE ELEVATION AS SHOWN ON SHEET 1 OF 2.  
2. ALL FRONT LOT DIMENSIONS ARE 20' UNLESS OTHERWISE NOTED.

SEWER ASBUILT MEASUREMENTS			WATER ASBUILT MEASUREMENTS			WATER ASBUILT MEASUREMENTS		
LOT #/VALVE	FROM	FROM	LOT #/VALVE	FROM	FROM	LOT #/VALVE	FROM	FROM
216	SMH#2 28'	SMH#3 36'	8" V @ STA 19+07	SMH#4 26'	SDMH#40 63'	214	I-36 75'	SMH#3 48'
217	" 54'	" 45'	8" V @ STA 24+02	" 25'	SDMH#40 65'	215	I-36 77'	" 50'
218	" 52'	" 42'	8" V @ STA 21+25	SMH#3 40'	SMH#18 42'	216	SMH#3 36'	SMH#2 34'
219	" 23'	" 77'	G' V @ 10+82	STA 10+82 FH. 7'	SDMH#40 20'	217	" 27'	SMH#2 31'
220	" 28'	" 31'	" 125	SDMH#10 60'	SMH#5 53'	218	" 27'	SMH#18 54'
221	SMH#3 33'	SMH#18 33'	" 126	" 64'	" 56'	219	" 65'	" 51'
222	" 131'	" 48'	" 127	" 28'	" 87'	220	" 20'	" 33'
223	" 140'	" 54'	" 128	" 102'	" 20'	221	SMH#18 37'	SMH#9 103'
224	SMH#18 36'	SMH#19 142'	" 129	SDMH#5 26'	SMH#20 111'	222	" 38'	" 183'
225	" 41'	" 133'	" 200	" 28'	" 102'	223	" 50'	" 186'
226	" 53'	" 114'	" 201	SDMH#20 80'	SMH#4 60'	224	" 23'	" 150'
227	" 71'	" 26'	" 202	" 80'	" 57'	225	" 43'	" 122'
228	" 86'	" 77'	" 203	" 24'	" 35'	226	" 52'	" 102'
229	" 107'	" 52'	" 204	" 25'	" 33'	227	" 62'	" 22'
230	" 124'	" 45'	" 205	SDMH#4 44'	SMH#40 85'	228	" 26'	" 65'
231	" 146'	" 37'	" 206	" 46'	" 83'	229	" 28'	" 65'
232	SMH#19 20'	SMH#20 113'	" 207	" 21'	" 68'	230	SMH#19 27'	MH#40 S.D. 24'
233	" 54'	" 20'	" 208	" 24'	" 68'	231	SMH#19 27'	MH#40 S.D. 22'
234	" 65'	" 76'	" 209	SDMH#40 80'	I-36 50'	232	SMH#20 101'	SMH#19 49'
235	" 82'	" 57'	" 210	" 28'	" 38'	233	" 28'	" 50'
236	" 100'	" 36'	" 211	" 20'	" 35'	234	" 63'	" 78'
237	" 120'	" 20'	" 212	I-36 25'	SMH#3 34'	235	" 60'	" 81'
238	" 140'	" 22'	" 213	I-36 30'	" 33'	236	" 27'	MH#40 S.D. 122'
						237	" 24'	" 124'
						238	" 27'	SMH#4 92'
						239	" 30'	SMH#4 23'
						240	" 105'	SMH#5 26'
						241	" 108'	SMH#5 22'
						242	SMH#5 64'	I-78 72'
						243	" 61'	" 68'
						244	" 47'	" 39'
						245	" 46'	" 37'

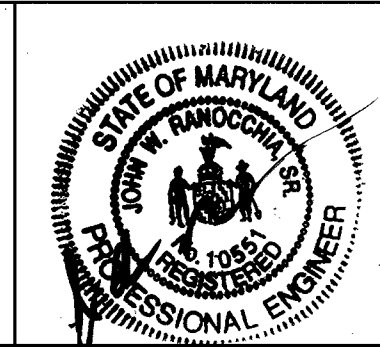


**CALM SUNSET**  
SCALE: HORIZ. 1"=50'  
VERT. 1"=5'

DEPARTMENT OF PUBLIC WORKS  
HOWARD COUNTY, MARYLAND  
*Robert Bennett* 9-17-98  
CHIEF - BUREAU OF UTILITIES - DATE

DEPARTMENT OF PLANNING & ZONING  
HOWARD COUNTY, MARYLAND  
*Mark Bennett* 9/20/98  
CHIEF - DEVELOPMENT ENGINEERING DIVISION - DATE

**DMW**  
Daft · McCrene · Walker, Inc.  
A Team of Land Planners, 200 East Pennsylvania Avenue  
Landscape Architects, Towson, Maryland 21286  
Engineers, Surveyors & Environmental Professionals 410 296 3333  
Fax 296 4705



DESIGN BY: JLS  
DRAWN BY: JMH  
CHECKED BY: JLS  
DATE: Sept. 3, 1998

REVISION	BY	NO.	DATE
ASBUILT CONDITIONS ADDED TO PLAN	KOI	2	8/12/98

WATER AND SEWER  
PLAN AND PROFILE  
600 SCALE MAP NO. 42 BLOCK NO. 5

**SNOWDEN RIDGE**  
SECTION 2, AREA 2, LOTS 195-245  
TAX MAP 42 PARCEL 513  
6TH ELECTION DISTRICT OF HOWARD COUNTY, MARYLAND  
CONTRACT NO. 24-3661-D  
SCALE 1"=50'  
SHEET 2 OF 2