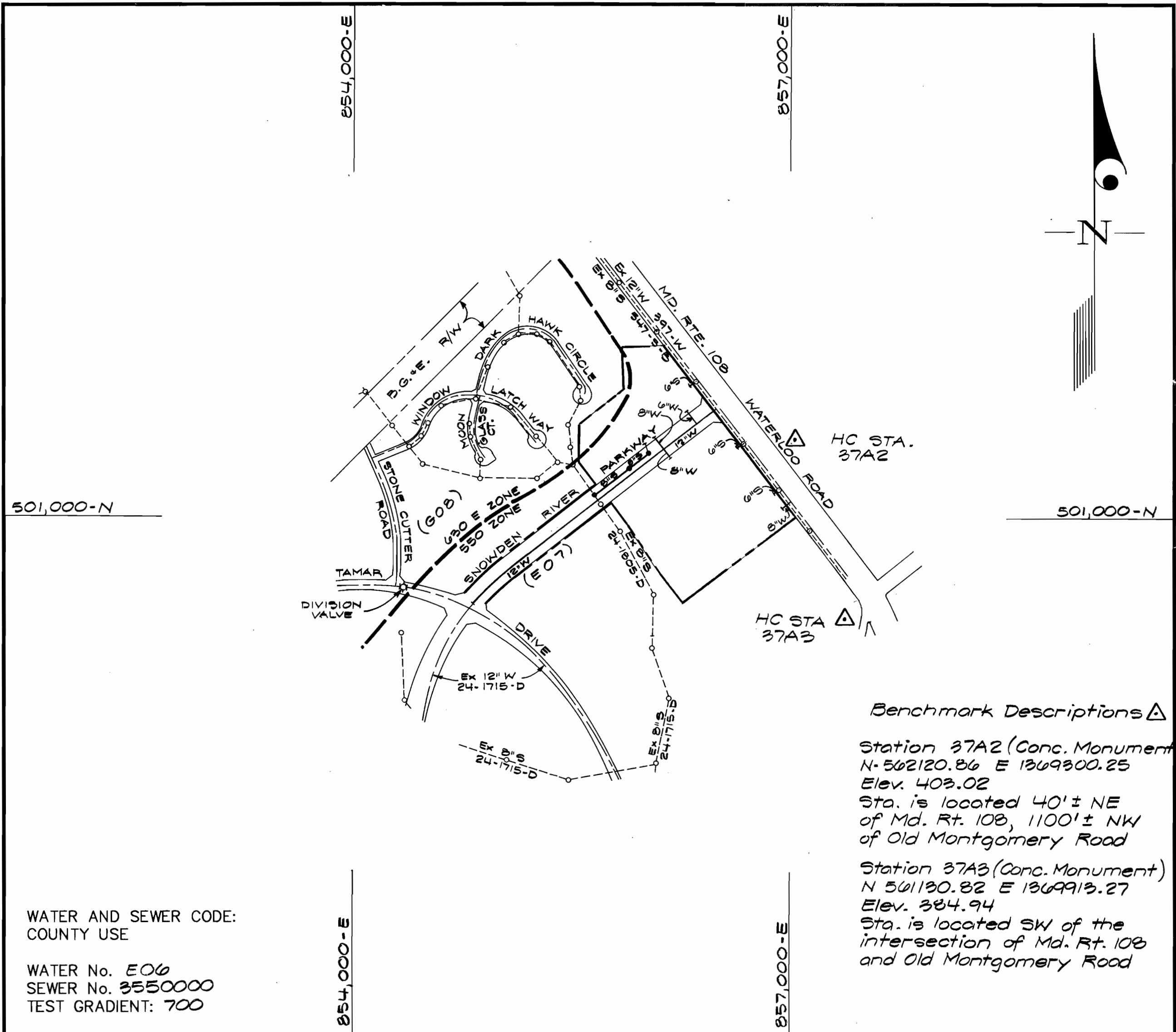


QUANTITIES				
ITEMS	QUANTITIES ESTIMATED	AS-BUILT		
		QUANTITIES	TYPE	MANUFACTURER/SUPPLIER
12" Water	2156 LF	2075	CLASS 52	GRIFFIN PIPE PROD. CO.
8" Water	175 LF	172.5	"	"
6" Water	247 LF	286	"	"
12"x12" T.S.+V.	1 ea.	1	CLASS 52	MUELLER CO.
12"x8" T.S.+V.	1 ea.	1	"	"
12"x8" C	1 ea.	2	CLASS 52	U.S. PIPE & FOUNDRY
12"x6" T	5 ea.	5	"	"
8" V	2 ea.	3	"	MUELLER CO.
6" V	5 ea.	5	"	"
8" COP	3 ea.	3	"	"
6" COP	1 ea.	1	"	"
FH	4 ea.	7	(4) Snowden	(3) HD108 MUELLER CO.
8" Sewer	685 LF	693	SDR-35	J.M. MANUFACTURE CO.
6" Sewer	80 LF	80	"	J.M. MANUFACTURE CO.
Type "B" D.C.	1 ea.	1	SANITARY	ATLANTIC CONC. PIPE
Manholes	2 ea.	3	"	"
6" Stopper	4 ea.	4	SDR-35	J.M. MANUFACTURE CO.
8" Stopper	1 ea.	1	SDR-35	"

NAME OF UTILITY CONTRACTOR: _____

SURVEY AND DRAFTING DIV. CHECKBOX: _____ AS-BUILT DATE: _____

TYPE OF BUILDING	N/A
NUMBER OF UNITS	N/A
NUMBER OF S.H.C.'s	4
NUMBER OF W.H.C.'s	0
DRAINAGE AREA	Dorsey Run
TREATMENT PLANT	L.R.W.Q.M. Center Savage



VICINITY MAP
SCALE: 1"=600'

CONTRACT No. 24-3659-D
ROUTE 108 COMMERCIAL
Section 1 Area 1 and Proposed
Snowden Parkway Connection to Md. Route 108
HOWARD COUNTY, MARYLAND
DEPARTMENT OF PUBLIC WORKS

- GENERAL NOTES**
- PART I**
- Approximate location of existing mains are shown. The contractor shall take all necessary precautions to protect existing mains and services and maintain uninterrupted supply. Any damage incurred shall be repaired immediately to the satisfaction of the Engineer at the Contractor's expense.
 - All horizontal controls are based on Maryland State Coordinates [North American Datum 1983 (NAD '83)].
 - All vertical controls are based on U.S.G.S. data.
 - All pipe elevations shown are invert elevations.
 - Clear all utilities by a minimum of 6". Clear all poles by 2'-0" minimum or tunnel as required. The owner has contacted the utility companies and has made arrangements for bracing of poles as shown on the drawings. In the event the contractor's work requires the bracing of additional poles, any cost incurred by the owner for bracing of additional poles or damages shall be deducted from money owed the contractor. The contractor shall coordinate with the utility companies to schedule the bracing of the poles.
 - For details not shown on the drawings, and for materials and construction methods use Howard County Design Manual, Volume IV, Standard Specifications and Detail for Construction (Latest Edition). The contractor shall have a copy of Volume IV on the job.
 - Where test pits have been made on existing utilities, they are noted by the symbol at the location of the test pit. A note or notes containing the results of the test pit or pits is included on the drawings. Existing utilities in the vicinity of the proposed work for which test pits have not been dug shall be located by the contractor two weeks in advance of construction operations at his own expense.
 - Contractor shall notify the following utility companies or agencies at least (5) working days before starting work shown on these plans:
 - State Highway Administration 531-5533
 - BGE Contractor Services 850-4620
 - BGE Under Ground Damage Control 787-9068
 - Miss Utility 1-800-257-7777
 - Colonial Pipeline Co. 795-1390
 - Howard County Department of Public Works Bureau of Utilities 313-4900
 - Trees and shrubs are to be protected from damage to maximum extent. Trees and shrubs located within the construction strip are not to be removed or damaged by the contractor.
 - Contractor shall remove trees, stumps and roots along line of excavation. Payment for such removal shall be included in the unit price bid for construction of the main.
 - The contractor shall notify the Bureau of Highways, Howard County, at (410) 313-2450 at least five (5) working days before any open cut of any County road or boring/jacking operation on County roads for laying water/sewer mains or house connections. The approval of these drawings will constitute compliance with DPW requirement per Section 18.114(a) of the Howard County Code.
- PART II - WATER**
- All water mains to be D.I.P. Class 52 unless otherwise noted.
 - Tops of all water mains to have a minimum of 3'-1/2' cover unless otherwise noted.
 - Valves adjacent to tees shall be strapped to tees.
 - All fittings shall be buttressed or anchored with concrete in accordance with the Standard Details unless otherwise provided for on the drawings.
 - Fire hydrants shall be set to the bury line elevations shown on the drawings. All fire hydrants shall be restrained and buttressed with concrete in accordance with the Standard Details. Soil around the fire hydrant shall be compacted in accordance with Section 1000 and 1005 of the Standard Specifications.
 - The contractor shall not operate any water main valves on the existing water system.
 - All water house connections shall be for inside meter setting unless otherwise noted on plans or in specifications.
 - For sprinkler system for all townhomes or multi-family dwelling units should have a minimum of 1' connection with a 3/4" meter.
- PART III - SEWER**
- All sewer mains shall be DIP and P.V.C. unless otherwise noted.
 - All manholes shall be 4'-0" inside diameter unless otherwise noted.
 - Force mains shall be D.I.P. only.
 - Manholes shown with 12" and 16" walls are for brick manholes only. Manholes designated W.T. in plan and profile shall have watertight frame and covers, Standard Detail G5.52. Where watertight frame and cover is used, set top of frame 1'-6" above finished grade unless otherwise noted on drawings.
 - House(s) with the symbol "C.N.S." indicates that cellar cannot be served.

Sediment Control Measures will be implemented in accordance with Section 219 of the Specifications & with Re: 1 Drawings Plan F-98-101; Drawings 3, 6 & 7 for Siltment & Erosion Control.

REVIEWED FOR HOWARD SOIL CONSERVATION DISTRICT AND MEETS TECHNICAL REQUIREMENT

Cheryl Simmons 5/12/98

SIGNATURE DATE

U.S.D.A. NATURAL RESOURCES CONSERVATION SERVICE

OWNER/DEVELOPER

The Howard Research and Development Land Company
The Rouse Building
10275 Little Patuxent Parkway
Columbia, Maryland 21044

APPROVED:

John A. ... 5/12/98

SIGNATURE DATE

DEPARTMENT OF PUBLIC WORKS
HOWARD COUNTY, MARYLAND

Robert ... 5-7-98

DATE

DEPARTMENT OF PLANNING AND ZONING
HOWARD COUNTY, MARYLAND

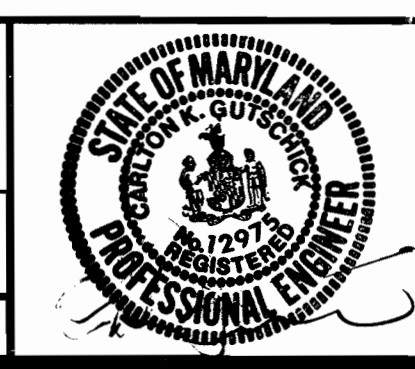
... 5/14/98

DATE

GLW GUTSCHICK LITTLE & WEBER, P.A.

CIVIL ENGINEERS, SURVEYORS, PLANNERS, LANDSCAPE ARCHITECTS
3909 NATIONAL DRIVE - SUITE 250 - BURTONSVILLE OFFICE PARK - BURTONSVILLE, MARYLAND 20866

TEL: (410) 880-1820 ~ FAX: (301) 421-4186



DES: ASF			
DRN: ASF			
CHK:			
DATE:	K.R.I. 1	AS-BUILT CONDITIONS ADDED TO PLAN	8/10/98
BY NO		REVISION	DATE

600' SCALE MAP NO. 37 BLOCK NO. 1-7

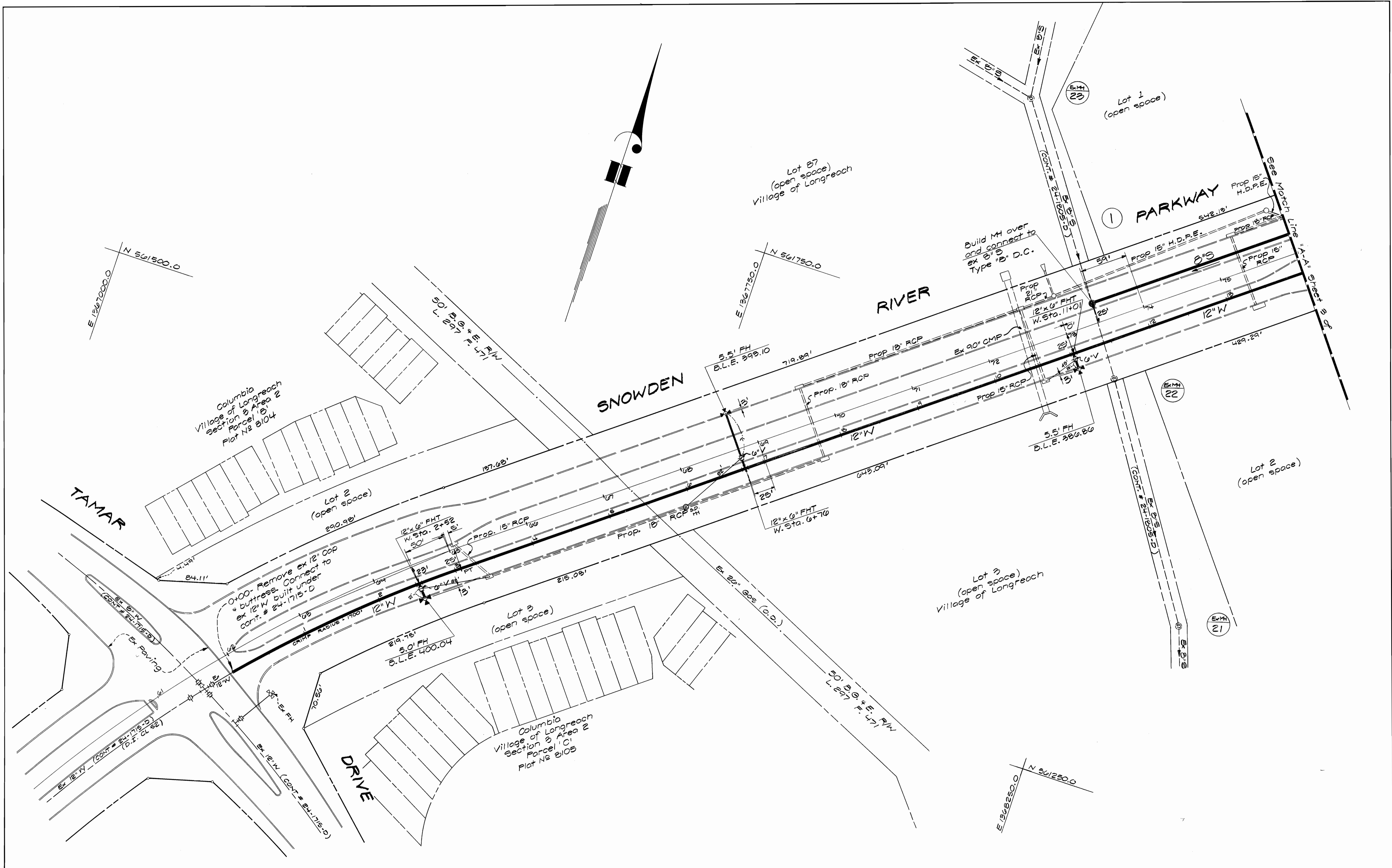
ROUTE 108 COMMERCIAL,
Section 1 Area 1 and Proposed
Snowden Parkway Conn. to Md. Rte. 108

Parcels A and B, Lots 1 and 2
6th Election District
Howard Co., Md.
Contract No. 24-3659-D

GLW FILE No.
97-009

SCALE AS SHOWN

SHEET 1 OF 4



Department of Public Works
Howard County, Maryland

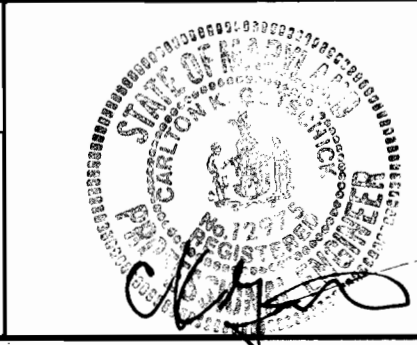
Robert M. Reisinger 5-2-98
Chief, Bureau of Utilities Date

Department of Planning & Zoning
Howard County, Maryland

William J. ... 5/4/98
Chief, Development Engineering Division Date

GW GUTSCHICK LITTLE & WEBER, P.A.
ENGINEERS, PLANNERS, SURVEYORS

3909 NATIONAL DRIVE - SUITE 250 - BURTONSVILLE OFFICE PARK
BURTONSVILLE, MD. 20866
(301) 421-4024



DES:	RSP				
DRN:	RSP				
CHK:					
DATE:	8/10/98				
BY:	K&I	1	AS-BUILT CONDITIONS ADDED TO PLAN		
NO.:					
REVISION:					

Water and Sewer
Construction Plans
Scale 1" = 50'

600' SCALE MAP NO. 27 BLOCK NO. 1-7

ROUTE 108 COMMERCIAL,
Section 1 Area 1 and Proposed
Snowden Parkway Connection to Md. Rte. 108

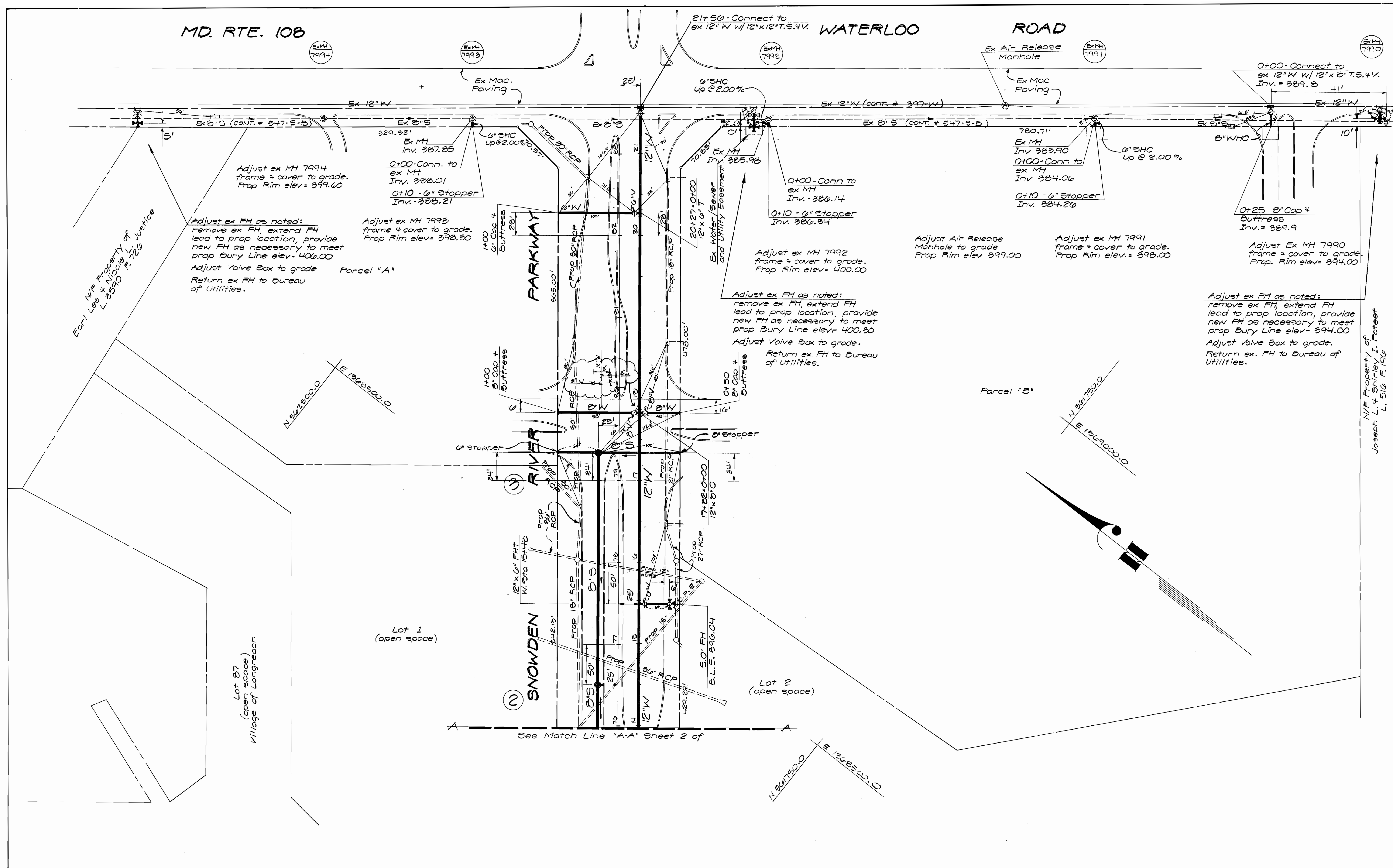
Parcels A and B, Lots 1 and 2
6th Election District Howard Co., Maryland
Contract No 24-3659-D

SCALE AS SHOWN
SHEET 2 OF 4

MD. RTE. 108

WATERLOO ROAD

ROAD



Department of Public Works
Howard County, Maryland

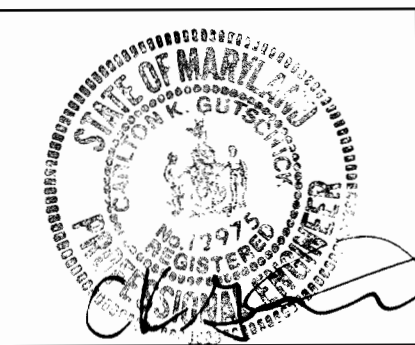
Robert W. Berman 5/7/98
Chief, Bureau of Utilities Date

Department of Planning & Zoning
Howard County, Maryland

John C. Cummings 5/14/98
Chief, Development Engineering Division Date

GW GUTSCHICK LITTLE & WEBER, P.A.
ENGINEERS, PLANNERS, SURVEYORS

3909 NATIONAL DRIVE SUITE 250 - BURTONSVILLE OFFICE PARK
BURTONSVILLE, MD. 20886
(301) 421-4024



DES:	RSP				
DRN:	RSP				
CHK:					
DATE:	K.C.I.	1	AS-BUILT CONDITIONS ADDED TO PLAN	8/10/98	
	BY	NO.	REVISION	DATE	

Water and Sewer
Construction Plans
Scale 1"=50'

600' SCALE MAP NO. 37 BLOCK NO. 1-7

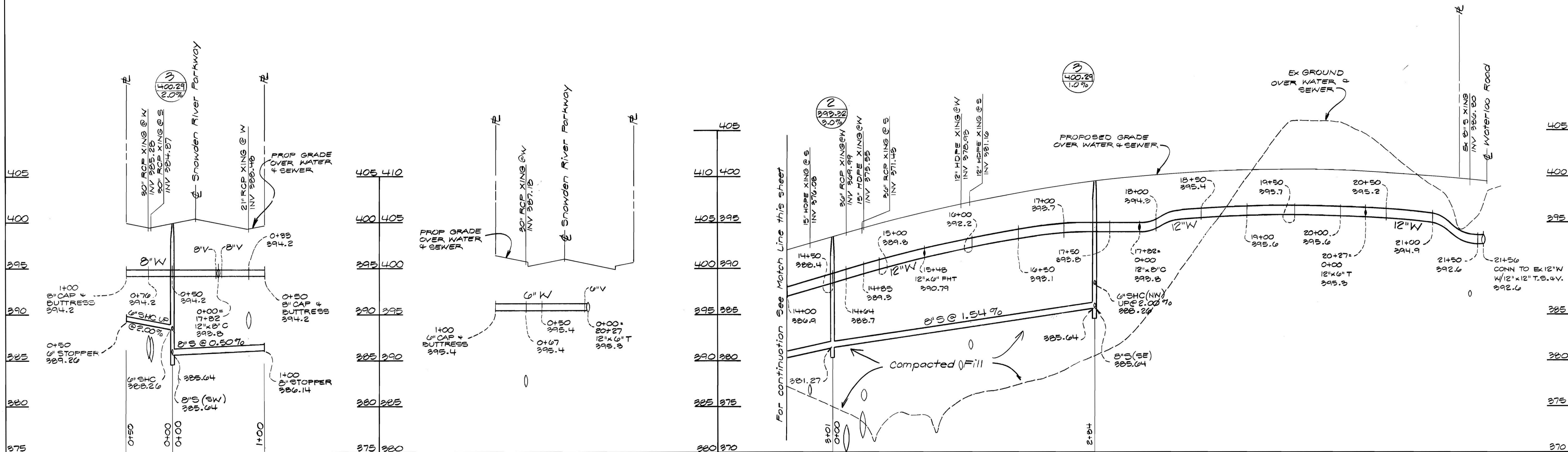
ROUTE 108 COMMERCIAL,
Section 1 Area 1 and Proposed
Snowden Parkway Connection to Md. Rte. 108

Parcels A and B, Lots 1 and 2
6th Election District Howard Co., Maryland
Contract No 24-3659-D

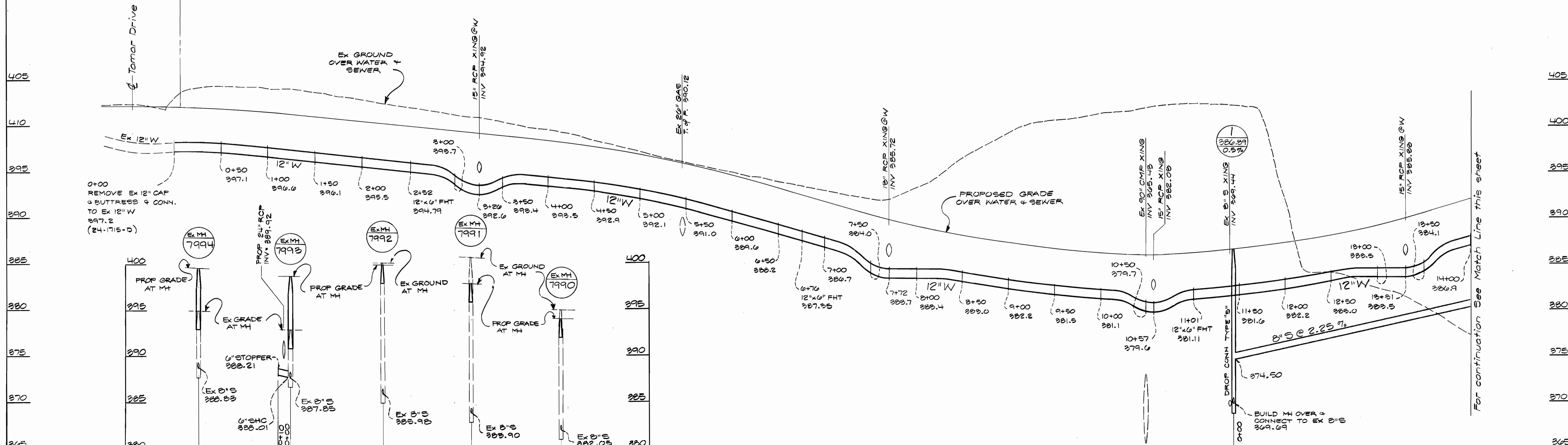
SCALE
AS
SHOWN

SHEET
3 OF 4

SNOWDEN RIVER PARKWAY



SNOWDEN RIVER PARKWAY



Department of Public Works
Howard County, Maryland

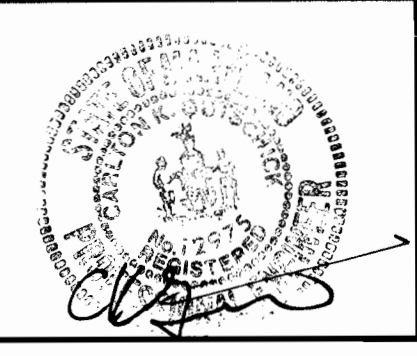
Robert W. Deming
Chief, Bureau of Utilities

Department of Planning & Zoning
Howard County, Maryland

Michael J. ...
Chief, Development Engineering Division

GLW GUTSCHICK LITTLE & WEBER, P.A.
ENGINEERS, PLANNERS, SURVEYORS

3909 NATIONAL DRIVE, SUITE 250 BURTONTOWNE OFFICE PARK
BURTONTOWNE, MD. 20866
(301) 421-4024



DES: RSP					
DRN: RSP					
CHK:					
DATE:	BY:	NO.	REVISION	DATE	

Water and Sewer Profiles
Scale - Hor. 1" = 50'
Vert. 1" = 5'

600' SCALE MAP NO. 37 BLOCK NO. 1-7

ROUTE 108 COMMERCIAL,
Section 1 Area 1 and Proposed
Snowden Parkway Connection to Md. Rte. 108

Parcels A and B, Lots 1 and 2
6th Election District
Howard Co., Maryland
Contract No 24-3659-D

SCALE AS SHOWN

SHEET 4 OF 4