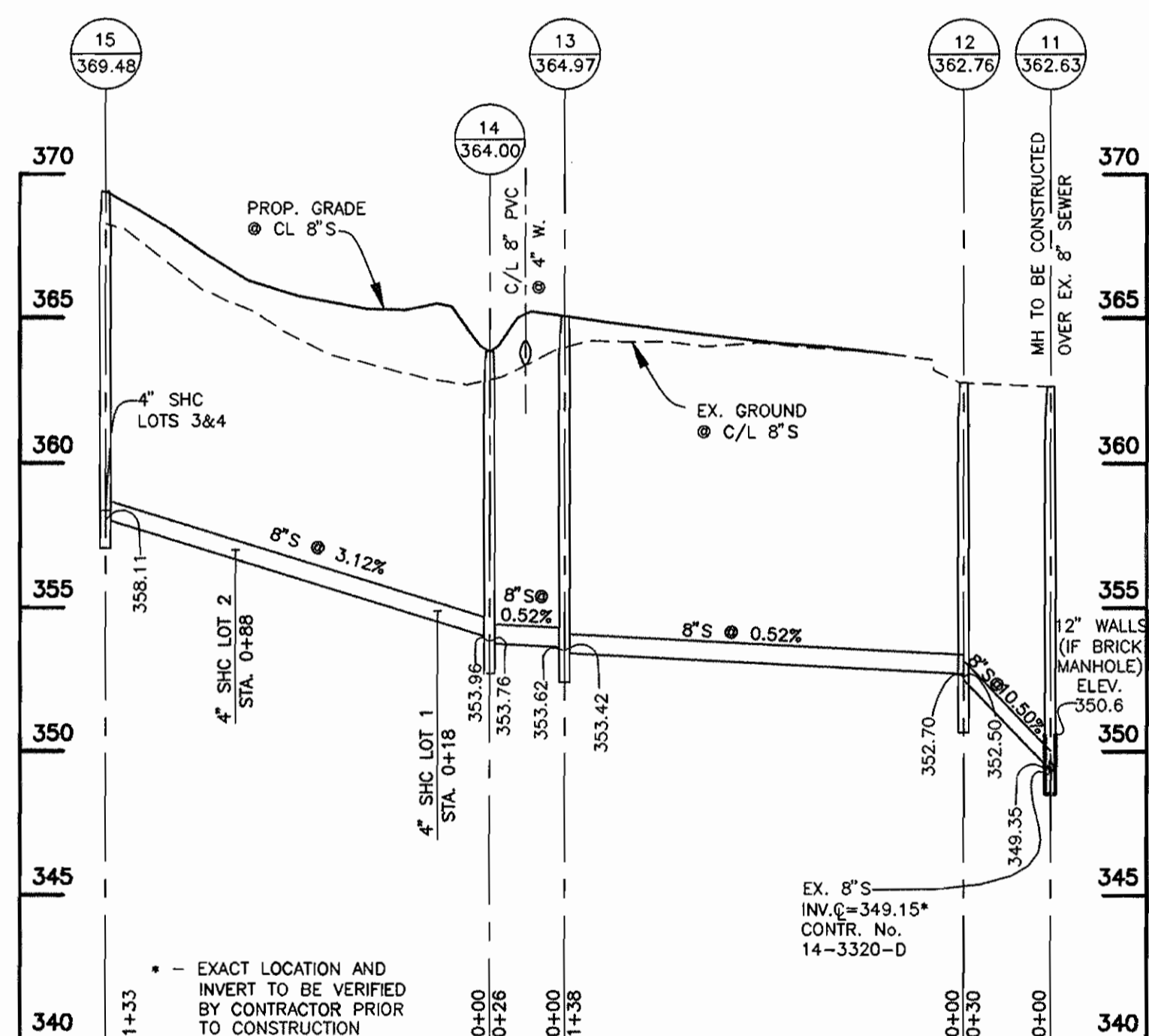
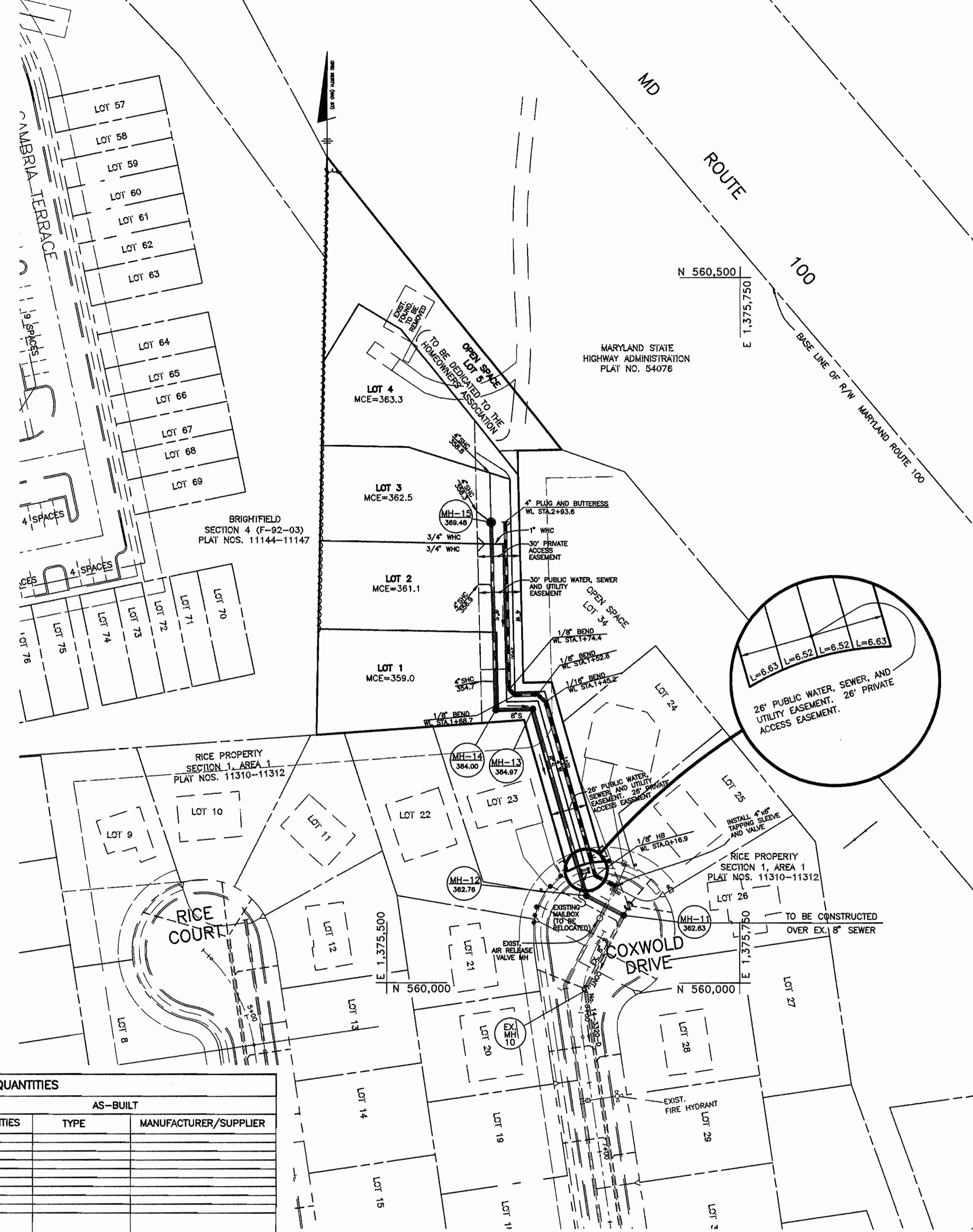


**WATER MAIN PROFILE**  
SCALE: HORIZ. 1" = 50'  
VERT. 1" = 5'



**SANITARY SEWER PROFILE**  
SCALE: HORIZ. 1" = 50'  
VERT. 1" = 5'



**PLAN**  
SCALE: 1" = 50'

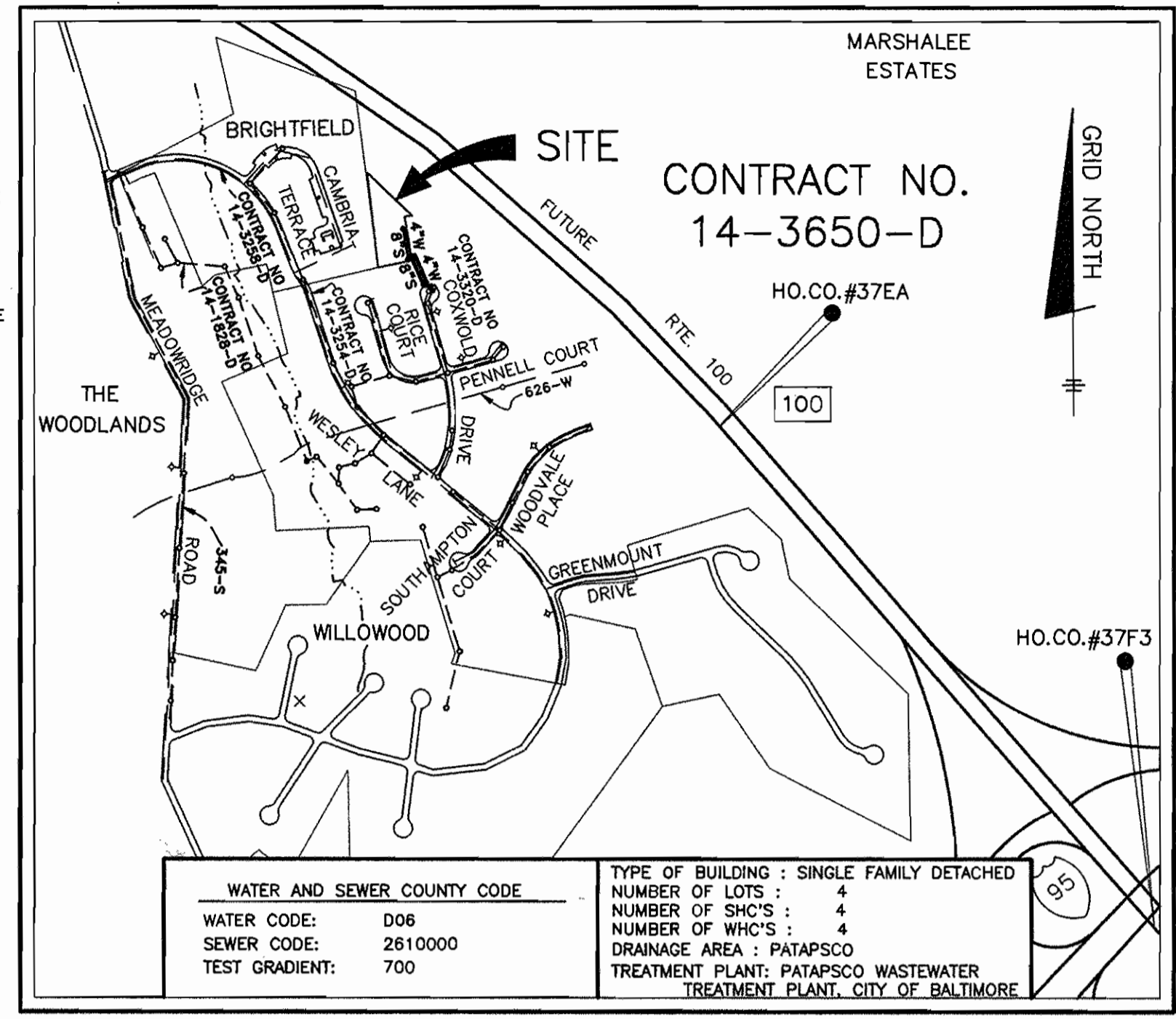
**NOTE:**  
LOCATION OF THE EXISTING WATER AND SEWER CONNECTIONS ARE APPROXIMATE, TO BE FIELD VERIFIED BY CONTRACTOR PRIOR TO CONSTRUCTION.

**BENCH MARKS (NAD 27)**  
HO.CO. #2444005 ELEV. 271.249'  
CONC. MONUMENT 0.5' BELOW SURFACE, ON THE WEST SIDE OF MEADOWBRIDGE ROAD SOUTH OF MAYFIELD ROAD.  
N 495588.271 E 863126.170

HO.CO. #2444013 ELEV. 268.109'  
CONC. MONUMENT AT SURFACE, 17.1' NORTH OF CENTERLINE OF MAYFIELD AVE.  
N 495846.964 E 862542.349

**BENCH MARKS (NAD 83)**  
HO.CO. #37F3  
CONC. MONUMENT 18.86' NORTH OF EDGE OF E.B. RTE. 100, 34.65' N.E. OF 1-95 BRIDGE ABUTMENT.  
N 557,269.1879 (FT) E 1,378,631.0578 (FT)  
N 69,855,9899 (M) E 420,207.5911 (M)

HO.CO. #37EA  
CONC. MONUMENT 16.7' NORTH OF EDGE OF E.B. RTE. 100, 28.1' S.W. OF X-CUT IN BOLT OF MEDIUM GUARD RAIL.  
N 559,149.1001 (FT) E 1,378,516.2102 (FT)  
N 170,428.9883 (M) E 419,694.9045 (M)



**VICINITY MAP**  
SCALE: 1" = 600'

**GENERAL NOTES**

- PART 1 - GENERAL**
- APPROXIMATE LOCATION OF EXISTING MAINS ARE SHOWN. THE CONTRACTOR SHALL TAKE ALL NECESSARY PRECAUTIONS TO PROTECT EXISTING MAINS AND SERVICES AND MAINTAIN UNINTERRUPTED SUPPLY. ANY DAMAGE INCURRED SHALL BE REPAIRED IMMEDIATELY TO THE SATISFACTION OF THE ENGINEER AT THE CONTRACTOR'S EXPENSE.
  - ALL HORIZONTAL CONTROLS ARE BASED ON MARYLAND STATE COORDINATES (NAD 83).
  - ALL VERTICAL CONTROLS ARE BASED ON U.S.G.S. DATA.
  - ALL PIPE ELEVATIONS SHOWN ARE INVERT ELEVATIONS.
  - CLEAR ALL UTILITIES BY A MINIMUM OF 6' CLEARANCE POLES BY 2'-0" MINIMUM OR TUNNEL AS REQUIRED. THE OWNER HAS CONTACTED THE UTILITY COMPANIES AND HAS MADE ARRANGEMENTS FOR BRACING OF POLES AS SHOWN ON THE DRAWINGS. IN THE EVENT THE CONTRACTOR'S WORK REQUIRES THE BRACING OF ADDITIONAL POLES, ANY COST INCURRED BY THE OWNER FOR THE BRACING OF ADDITIONAL POLES OR DAMAGES SHALL BE DEDUCTED FROM MONEY OWED THE CONTRACTOR. THE CONTRACTOR SHALL COORDINATE WITH THE UTILITY COMPANIES TO SCHEDULE THE BRACING OF THE POLES.
  - FOR DETAILS NOT SHOWN ON THE DRAWINGS, AND FOR MATERIALS AND CONSTRUCTION METHODS, USE HOWARD COUNTY DESIGN MANUAL VOLUME IV, STANDARD SPECIFICATIONS AND DETAIL FOR CONSTRUCTION. THE CONTRACTOR SHALL HAVE A COPY OF VOLUME IV ON THE JOB.
  - WHERE TEST PITS HAVE BEEN MADE ON EXISTING UTILITIES, THEY ARE NOTED BY THE SYMBOL AT THE LOCATION OF THE TEST PIT. A NOTE OR NOTES CONTAINING THE RESULTS OF THE TEST PIT OR PITS IS INCLUDED ON THE DRAWINGS. EXISTING UTILITIES IN THE VICINITY OF THE PROPOSED WORK FOR WHICH TEST PITS HAVE NOT BEEN DUG SHALL BE LOCATED BY THE CONTRACTOR TWO WEEKS IN ADVANCE OF CONSTRUCTION OPERATIONS AT HIS OWN EXPENSE.
  - CONTRACTOR SHALL NOTIFY THE FOLLOWING UTILITY COMPANIES OR AGENCIES AT LEAST FIVE WORKING DAYS BEFORE STARTING WORK SHOWN ON THESE PLANS:
    - STATE HIGHWAY ADMINISTRATION.....331-5533
    - BALTIMORE GAS & ELECTRIC CO.....850-4620
    - BALTIMORE GAS & ELECTRIC CO.....787-9068
    - MISS UTILITY.....1-800-257-7777
    - COLONIAL PIPELINE CO.....795-1390
    - BUREAU OF UTILITIES.....
    - HOWARD CO. DEPT. OF PUBLIC WORKS.....313-4900
  - TREES AND SHRUBS ARE TO BE PROTECTED FROM DAMAGE TO MAXIMUM EXTENT. TREES AND SHRUBS LOCATED WITHIN THE CONSTRUCTION STRIP ARE NOT TO BE REMOVED OR DAMAGED BY THE CONTRACTOR.
  - CONTRACTOR SHALL REMOVE TREES, STUMPS AND ROOTS ALONG LINE OF EXCAVATION. PAYMENT FOR SUCH REMOVAL SHALL BE INCLUDED IN THE UNIT PRICE BID FOR CONSTRUCTION OF THE MAIN.
  - PLACE REGULATION "MEN WORKING" AND WARNING SIGNS AS REQUIRED TO COMPLY WITH MARYLAND STATE HIGHWAY ADMINISTRATION MANUAL OF TRAFFIC CONTROL FOR HIGHWAY MAINTENANCE OPERATIONS.
  - THE CONTRACTOR SHALL NOTIFY THE BUREAU OF HIGHWAYS, HOWARD COUNTY, AT (410) 313-2450 AT LEAST FIVE WORKING DAYS BEFORE ANY OPEN CUT OF ANY COUNTY ROAD OR BORING/JACKING OPERATION IN COUNTY ROADS FOR LAYING WATER/SEWER MAINS OR HOUSE CONNECTIONS. THE APPROVAL OF THESE DRAWINGS WILL CONSTITUTE COMPLIANCE WITH DPW REQUIREMENTS PER SECTION 18.114(c) OF THE HOWARD COUNTY CODE.
- PART 2 - WATER**
- ALL WATER MAINS TO BE D.I.P. CLASS 52 UNLESS OTHERWISE NOTED.
  - TOPS OF ALL WATER MAINS TO HAVE A MINIMUM OF 3-1/2" COVER UNLESS OTHERWISE NOTED.
  - VALVES ADJACENT TO TEES SHALL BE STRAPPED TO TEES.
  - ALL FITTINGS SHALL BE BUTTRESSED OR ANCHORED WITH CONCRETE IN ACCORDANCE WITH THE STANDARD DETAILS UNLESS OTHERWISE PROVIDED FOR ON THE DRAWINGS.
  - FIRE HYDRANTS SHALL BE SET TO THE BURY LINE ELEVATIONS SHOWN ON THE DRAWINGS. ALL FIRE HYDRANTS SHALL BE RESTRAINED AND BUTTRESSED WITH CONCRETE IN ACCORDANCE WITH STANDARD DETAILS. SOIL AROUND THE FIRE HYDRANT SHALL BE COMPACTED IN ACCORDANCE WITH SECTION 1000 AND 1005 OF THE STANDARD SPECIFICATIONS. THE CONTRACTOR SHALL NOT OPERATE ANY WATER MAIN VALVES ON THE EXISTING WATER SYSTEM.
  - ALL WATER HOUSE CONNECTIONS SHALL BE FOR INSIDE METER SETTING UNLESS OTHERWISE NOTED ON PLANS OR IN SPECIFICATIONS.
  - SINGLE WATER HOUSE CONNECTIONS SHALL BE 3/4".
  - DOUBLE WATER HOUSE CONNECTIONS SHALL BE 1".
  - THE MINIMUM COVER ON WATER MAIN SHALL BE 3.5'.
- PART 3 - SEWER**
- ALL SEWER MAINS SHALL BE DIP OR P.V.C. UNLESS OTHERWISE NOTED. ALL S.H.C. SHALL BE 4 INCHES.
  - ALL MANHOLES SHALL BE 4' - 0" INSIDE DIAMETER UNLESS OTHERWISE NOTED.
  - FORCE MAINS SHALL BE D.I.P. ONLY.
  - MANHOLES SHOWN WITH 12" AND 16" WALLS ARE FOR BRICK MANHOLES ONLY.
  - MANHOLES DESIGNATED W.T. IN PLAN AND PROFILE SHALL HAVE WATER-TIGHT FRAME AND COVERS, STANDARD DETAIL 05.52, WHERE WATER-TIGHT MANHOLE FRAME AND COVER IS USED, SET TOP OF FRAME 1" - 6" ABOVE FINISHED GRADE UNLESS OTHERWISE NOTED ON THE DRAWINGS.
  - HOUSE(S) WITH THE SYMBOL "C.N.S." INDICATES THAT CELLAR CANNOT BE SERVED.

**WHC LOCATION DATA**

LOT NO.	COORDINATE	NORTH/EAST
2/3	N560221.37	E1375565.27
4	N560376.02	E1375562.40

**SEWER MANHOLE LOCATION DATA**

NO.	LOCATION	OFFSET
1	N 560047.44 E 1375667.80	-----
2	N 560075.68 E 1375637.24	-----
3	N 560193.89 E 1375603.29	-----
4	N 560193.27 E 1375576.98	-----
5	N 560326.39 E 1375573.64	-----

**WATER LINE LOCATION DATA**

DESC.	WL STA	LOCATION
4" x 8" T.S. & VALVE	0+00	N 560067.77 E 1375662.63
1/8" HB	0+16.9	N 560075.61 E 1375647.67
1/8" HB	1+45.2	N 560198.88 E 1375612.26
1/8" HB	1+52.6	N 560203.99 E 1375606.88
1/8" HB	1+68.7	N 560203.57 E 1375590.73
1/8" HB	1+74.4	N 560207.47 E 1375586.64
4" PLUG	2+93.6	N 560326.65 E 1375583.64

HOWARD SOIL CONSERVATION DISTRICT:  
REVIEWED FOR HOWARD SOIL CONSERVATION DISTRICT AND MEETS TECHNICAL REQUIREMENTS

*Cheryl Simmons* 4/23/98  
NATURAL RESOURCES CONSERVATION SERVICE  
DATE

THIS PLAN IS APPROVED FOR SOIL EROSION AND SEDIMENT CONTROL BY THE HOWARD SOIL CONSERVATION DISTRICT.

*John K. Watson* 4/23/93  
HOWARD SOIL CONSERVATION DISTRICT  
DATE

SEDIMENT CONTROL MEASURES FOR THIS CONTRACT WILL BE IMPLEMENTED IN ACCORDANCE WITH SECTION 219 OF THE HOWARD COUNTY STANDARD SPECIFICATIONS AND AS PER ROAD CONSTRUCTION PLANS F-98-03

**QUANTITIES**

ITEM	QUANTITIES ESTIMATED	AS-BUILT	
		QUANTITIES	MANUFACTURER/SUPPLIER
4" WATER	294 LF		
4" x 8" TAPPING SL&V	103 LF		
1/2" W.H.C.	15 LF		
4" PLUG & BUTTRESS	3 LF		
8" SEWER	328 LF		
4" S.H.C.	5		
MANHOLES			
V.F. OF MANHOLE IN EXCESS OF 6" MIN. DEPTH	28 VF		

NAME OF UTILITY CONTRACTOR: \_\_\_\_\_

SURVEY AND DRAFTING AS-BUILT DATE: \_\_\_\_\_

DEPARTMENT OF PUBLIC WORKS HOWARD COUNTY, MARYLAND <i>Cheryl Simmons</i> 4-20-98 CHIEF, BUREAU OF UTILITIES	DEPARTMENT OF PLANNING AND ZONING HOWARD COUNTY, MARYLAND <i>John K. Watson</i> 4/23/93 CHIEF, DEVELOPMENT ENGINEERING DIVISION	<b>TSA GROUP, INC.</b> planning • architecture • engineering • surveying 8480 Baltimore National Pike Suite 418 Ellicott City, Maryland 21043 	DES: GWF DRN: EGG CHK: GWF DATE: 5-27-97 4-9-98	PRELIMINARY PLAN AND PROFILE OF WATER & SEWER MAINS RICE PROPERTY SECTION 2 LOTS 1-5 1st ELECTION DISTRICT CONTRACT NO. 14-3650-D	SCALE AS SHOWN SHEET 1 OF 1
--	--	--	---	---	--------------------------------------