

VICINITY MAP

SCALE: 1" = 600'

TYPE OF BUILDING: MULTIFAMILY
 NO. OF LOTS / PARCELS: 0
 NO. OF WATER HOUSE CONNECTIONS: 0
 NO. OF SEWER HOUSE CONNECTIONS: 0
 DRAINAGE AREA: LITTLE PATUXENT
 TREATMENT PLANT: LITTLE PATUXENT WATER QUALITY MANAGEMENT CENTER-SAVAGE HOWARD COUNTY
 WATER CODE: E31
 TEST GRABENT: 700
 SEWER CODE: 352000

SCALE
 PLAN: 1" = 50'

GENERAL NOTES

- PART I**
- APPROXIMATE LOCATION OF EXISTING MAINS ARE SHOWN. THE CONTRACTOR SHALL TAKE ALL NECESSARY PRECAUTIONS TO PROTECT EXISTING MAINS AND SERVICES AND MAINTAIN UNINTERRUPTED SUPPLY. ANY DAMAGE INCURRED SHALL BE REPAIRED IMMEDIATELY TO THE SATISFACTION OF THE ENGINEER AT THE CONTRACTOR'S EXPENSE.
 - ALL HORIZONTAL CONTROLS ARE BASED ON MARYLAND STATE COORDINATES, NORTH AMERICAN DATUM OF 1983 (NAD 83).
 - ALL VERTICAL CONTROLS ARE BASED ON U.S.G.S. DATA. ALL PIPE ELEVATIONS SHOWN ARE INVERT ELEVATIONS.
 - CLEAR ALL UTILITIES BY A MINIMUM OF 6'. CLEAR ALL POLES BY 2' - 0" MINIMUM OR TUNNEL AS REQUIRED. THE OWNER HAS CONTACTED THE UTILITY COMPANIES AND HAS MADE ARRANGEMENTS FOR BRACING OF POLES AS SHOWN ON THE DRAWINGS. IN THE EVENT THE CONTRACTOR'S WORK REQUIRES THE BRACING OF ADDITIONAL POLES, ANY COST INCURRED BY THE OWNER FOR BRACING OF ADDITIONAL POLES OR DAMAGES SHALL BE DEDUCTED FROM MONEY OWED THE CONTRACTOR. THE CONTRACTOR SHALL COORDINATE WITH THE UTILITY COMPANIES TO SCHEDULE THE BRACING OF THE POLES.
 - FOR DETAILS NOT SHOWN ON THE DRAWINGS AND FOR MATERIALS AND CONSTRUCTION METHODS USE HOWARD COUNTY DESIGN MANUAL, VOLUME IV, STANDARD SPECIFICATIONS AND DETAIL FOR CONSTRUCTION (LATEST EDITION). THE CONTRACTOR SHALL HAVE A COPY OF VOLUME IV ON THE JOB.
 - WHERE TEST PITS HAVE BEEN MADE ON EXISTING UTILITIES, THEY ARE NOTED BY THE SYMBOL AT THE LOCATION OF THE TEST PIT. A NOTE OR NOTES CONTAINING THE RESULTS OF THE TEST PIT OR PITS IS INCLUDED ON THE DRAWINGS. EXISTING UTILITIES IN THE VICINITY OF THE PROPOSED WORK FOR WHICH TEST PITS HAVE NOT BEEN DUG SHALL BE LOCATED BY THE CONTRACTOR TWO WEEKS IN ADVANCE OF CONSTRUCTION OPERATIONS AT HIS OWN EXPENSE.
 - CONTRACTOR SHALL NOTIFY THE FOLLOWING UTILITY COMPANIES OR AGENCIES AT LEAST FIVE WORKING DAYS BEFORE STARTING WORK SHOWN ON THESE PLANS:

AT&T	1-410-865-3803
STATE HIGHWAY ADMINISTRATION	1-410-531-5533
BC&E CO. CONTRACTOR SERVICES	1-410-850-4620
BC&E CO. UNDER GROUND DAMAGE CONTROL	1-410-787-9068
MIS'S UTILITY	1-800-257-7777
COLONIAL PIPELINE CO.	1-410-795-1390
HOWARD COUNTY DEPARTMENT OF PUBLIC WORKS	1-410-313-4900
BUREAU OF UTILITIES	1-410-597-8585
CHESAPEAKE & POTOMAC TELEPHONE CO.	
 - TREES AND SHRUBS ARE TO BE PROTECTED FROM DAMAGE TO MAXIMUM EXTENT. TREES AND SHRUBS LOCATED WITHIN THE CONSTRUCTION STRIP ARE NOT TO BE REMOVED OR DAMAGED BY THE CONTRACTOR.
 - CONTRACTOR SHALL REMOVE TREES, STUMPS, AND ROOTS ALONG LINE OF EXCAVATION. PAYMENT FOR SUCH REMOVAL SHALL BE INCLUDED IN THE UNIT PRICE BID FOR CONSTRUCTION OF THE MAIN.
 - THE CONTRACTOR SHALL NOTIFY THE BUREAU OF HIGHWAYS, HOWARD COUNTY, AT (410) 313-2450 AT LEAST FIVE WORKING DAYS BEFORE ANY OPEN CUT OF ANY COUNTY ROAD OR BORING/JACKING OPERATION IN COUNTY ROADS FOR LAYING WATER/SEWER MAINS OR HOUSE CONNECTIONS. THE APPROVAL OF THESE DRAWINGS WILL CONSTITUTE COMPLIANCE WITH DPW REQUIREMENTS PER SECTION 18.114(A) OF THE HOWARD COUNTY CODE.
- PART II - WATER**
- ALL WATER MAINS TO BE D.I.P. CLASS 52 UNLESS OTHERWISE NOTED.
 - TOPS OF ALL WATER MAINS TO HAVE A MINIMUM OF 3-1/2" COVER UNLESS OTHERWISE NOTED.
 - VALVES ADJACENT TO TEES SHALL BE STRAPPED TO TEES.
 - ALL FITTINGS SHALL BE BUTTRESSED OR ANCHORED WITH CONCRETE IN ACCORDANCE WITH THE STANDARD DETAILS UNLESS OTHERWISE PROVIDED FOR ON THE DRAWINGS.
 - FIRE HYDRANTS SHALL BE SET TO THE BURY LINE ELEVATIONS SHOWN ON THE DRAWINGS. ALL FIRE HYDRANTS SHALL BE RESTRAINED AND BUTTRESSED WITH CONCRETE IN ACCORDANCE WITH STANDARD DETAILS. SOIL AROUND THE FIRE HYDRANT SHALL BE COMPACTED IN ACCORDANCE WITH SECTION 1000 AND 1005 OF THE STANDARD SPECIFICATIONS.
 - THE CONTRACTOR SHALL NOT OPERATE ANY WATER MAIN VALVES ON THE EXISTING WATER SYSTEM.
 - ALL WATER HOUSE CONNECTIONS SHALL BE FOR INSIDE METER SETTING UNLESS OTHERWISE NOTED ON PLANS OR IN SPECIFICATIONS.
 - SPRINKLER SYSTEM FOR ALL TOWNHOMES OR MULTI-FAMILY DWELLING UNITS SHOULD HAVE A MINIMUM OF 1' CONNECTION WITH A 3/4" METER.
- PART III - SEWER**
- ALL SEWER MAINS SHALL BE DIP AND P.V.C. UNLESS OTHERWISE NOTED.
 - ALL MANHOLES SHALL BE 4' - 0" INSIDE DIAMETER UNLESS OTHERWISE NOTED.
 - FORCE MAINS SHALL BE D.I.P. ONLY.
 - MANHOLES SHOWN WITH 12" AND 16" WALLS ARE FOR BRICK MANHOLES ONLY.
 - MANHOLES DESIGNATED W.T. IN PLAN AND PROFILE SHALL HAVE WATERTIGHT FRAME AND COVERS, STANDARD DETAIL G5.52. WHERE WATERTIGHT MANHOLE FRAME AND COVER IS USED, SET TOP OF FRAME 1' - 6" ABOVE FINISHED GRADE UNLESS OTHERWISE NOTED ON THE DRAWINGS.
 - HOUSE(S) WITH THE SYMBOL "C.N.S." INDICATES THAT CELLAR CANNOT BE SERVED.

BENCHMARK	DESCRIPTION

ELEVATIONS SHOWN HEREON ARE BASED ON THE FOLLOWING TRAVERSE STATIONS ESTABLISHED BY FISHER, COLLINS AND CARTER, INC. (NGVD 29 VERTICAL DATUM)
 TR 906 N 504280.1630 E 838550.3680 ELEV. 381.500
 TR 907 N 504400.6701 E 838647.7701 ELEV. 394.150

REVIEWED FOR HOWARD SOIL CONSERVATION DISTRICT AND MEETS TECHNICAL REQUIREMENT

John L. Deaton 7/1/97
 SIGNATURE DATE

THIS DEVELOPMENT PLAN IS APPROVED FOR SOIL EROSION AND SEDIMENT CONTROL BY THE HOWARD COUNTY CONSERVATION DISTRICT.

APPROVED *Cheryl Simmons* 7/1/97
 HOWARD S.C.D. DATE

SEDIMENT CONTROL MEASURES WILL BE IMPLEMENTED IN ACCORDANCE WITH SECTION 219 OF THE SPECIFICATIONS AND WITH ROAD CONSTRUCTION PLANS F-97-159

DEPARTMENT OF PUBLIC WORKS
 HOWARD COUNTY, MARYLAND

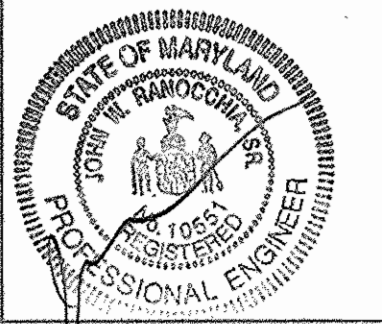
DEPARTMENT OF PLANNING & ZONING
 HOWARD COUNTY, MARYLAND

Robert B. Benner 6-24-97
 CHIEF - BUREAU OF UTILITIES - DATE

Cheryl Simmons 7/1/97
 CHIEF - DEVELOPMENT ENGINEERING DIVISION - DATE

DMW
 Daft · McCune · Walker, Inc.

A Team of Land Planners, 200 East Pennsylvania Avenue
 Towson, Maryland 21286
 Engineers, Surveyors & Environmental Professionals
 410 296 3333
 Fax 296 4705



DESIGN BY: JWS				
DRAWN BY: JWS				
CHECKED BY: JWR				
DATE: 6-18-97	BY NO.	REVISION	DATE	600 SCALE MAP NO. 36 BLOCK NO. 1

WATER & SEWER PLAN
 VICINITY MAP AND GENERAL NOTES

SHEET INDEX	
NO.	DESCRIPTION
1	WATER AND SEWER PLAN, VICINITY MAP & GENERAL NOTES
2	PROFILE OF WATER AND SEWER MAINS

ITEM	QUANTITIES ESTIMATED	AS-BUILT		
		QUANTITIES	TYPE	MANUFACTURER/SUPPLIER
8" SEWER	122 LF	123 LF	PVC SDR 35	JM Manufacturer/Filter
MANHOLES	1 EA	1 EA	Precast Conc.	Atlantic Conc. Products
6" WATER	0	10 LF	D&P CL-52	Atlantic States/Filter
8" WATER	78 LF	79 LF	D&P CL-52	"
12" WATER	570 LF	590 LF	D&P CL-52	"
8" VALVE	1	1	Gate Valve	Mueller Co./u.s. Filter
12" VALVE	1	1	Gate Valve	"
FIRE HYDRANTS	1	1	A 425	Centurian F.H.
6" VALVE	1	1	Gate Valve	Mueller Co./u.s. Filter

NAME OF UTILITY CONTRACTOR: W. F. Wilson, Inc.
 SURVEY AND DRAFTING DIVISION AS-BUILT DATE: _____

AS-BUILTS

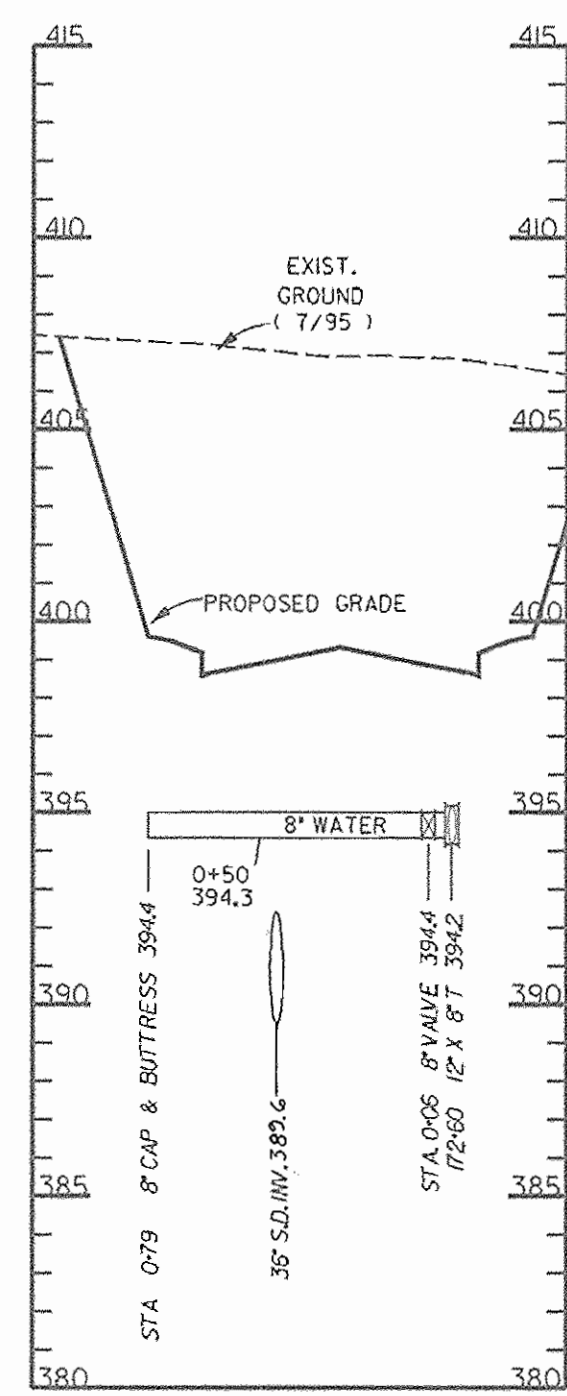
**BROKEN LAND PARKWAY
 MALL ACCESS EXTENSION**

SECTION 2 AREA 9 PHASE 224
 TAX MAP 36 PARCEL 81

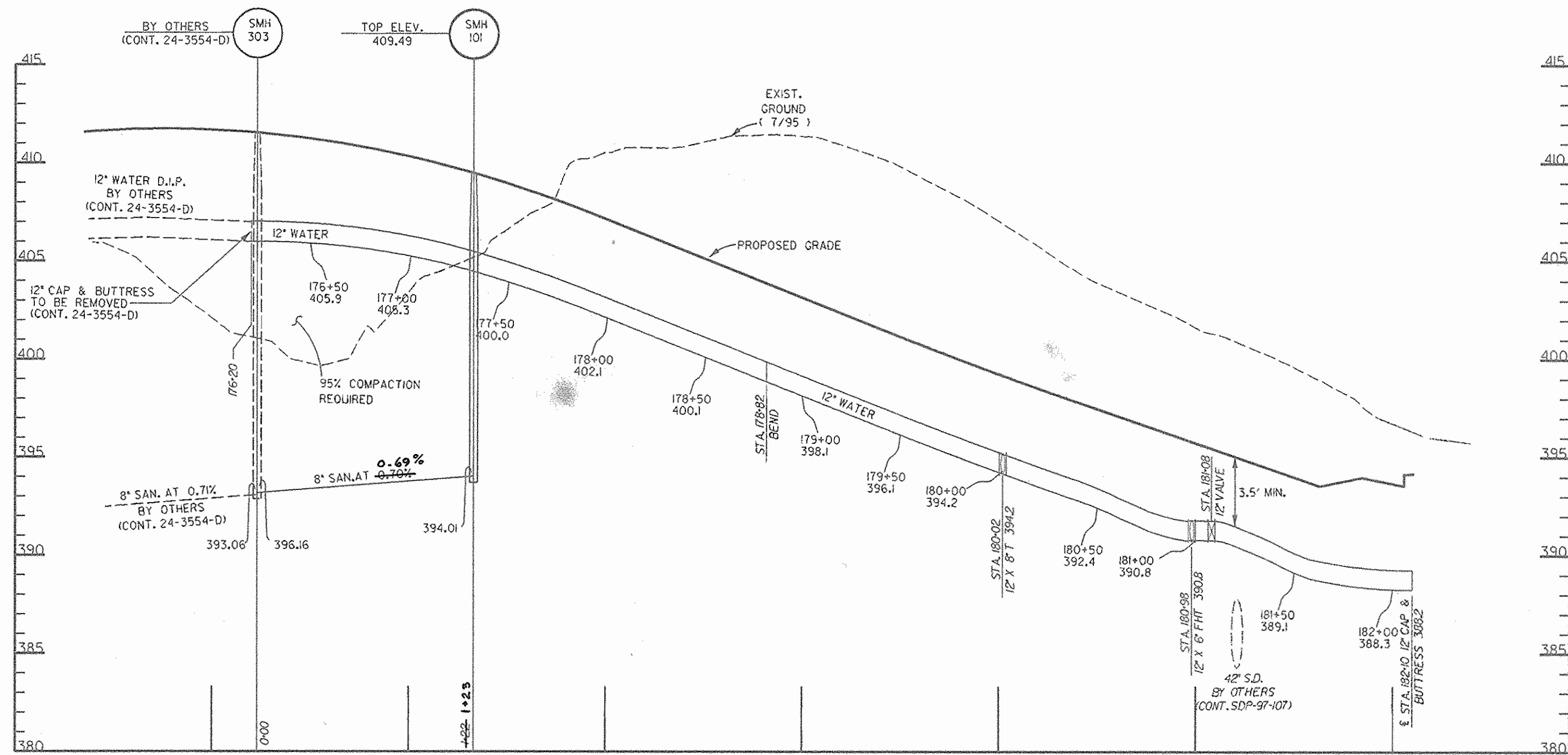
CONTRACT NO. 24-3632-D

SCALE
 1" = 50'

SHEET
 1 OF 2



PROFILE SCALE
HOR 1" = 50'
VERT 1" = 5'



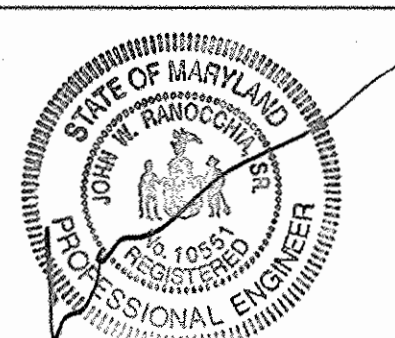
PROFILE SCALE
HOR 1" = 50'
VERT 1" = 5'

Tue Jun 17 22:02:09 1997 d:\95019a\95019a.dwg

DEPARTMENT OF PUBLIC WORKS
HOWARD COUNTY, MARYLAND

DEPARTMENT OF PLANNING & ZONING
HOWARD COUNTY, MARYLAND

DMW
Daft · McCune · Walker, Inc.
A Team of Land Planners, 200 East Pennsylvania Avenue
Landscape Architects, Towson, Maryland 21286
Engineers, Surveyors & Environmental Professionals 410 296 3333
Fax 296 4705



DESIGN BY:	JWS		
DRAWN BY:	JWS		
CHECKED BY:	JWR		
DATE:	6-18-97		
BY	NO.	REVISION	DATE

WATER & SEWER PROFILES

600 SCALE MAP NO. 36 BLOCK NO. 1

BROKEN LAND PARKWAY
MALL ACCESS EXTENSION

SECTION 2 AREA 9 PHASE 224
TAX MAP 36 PARCEL 81

CONTRACT NO. 24-3632-D

SCALE
AS SHOWN

SHEET
2 OF 2