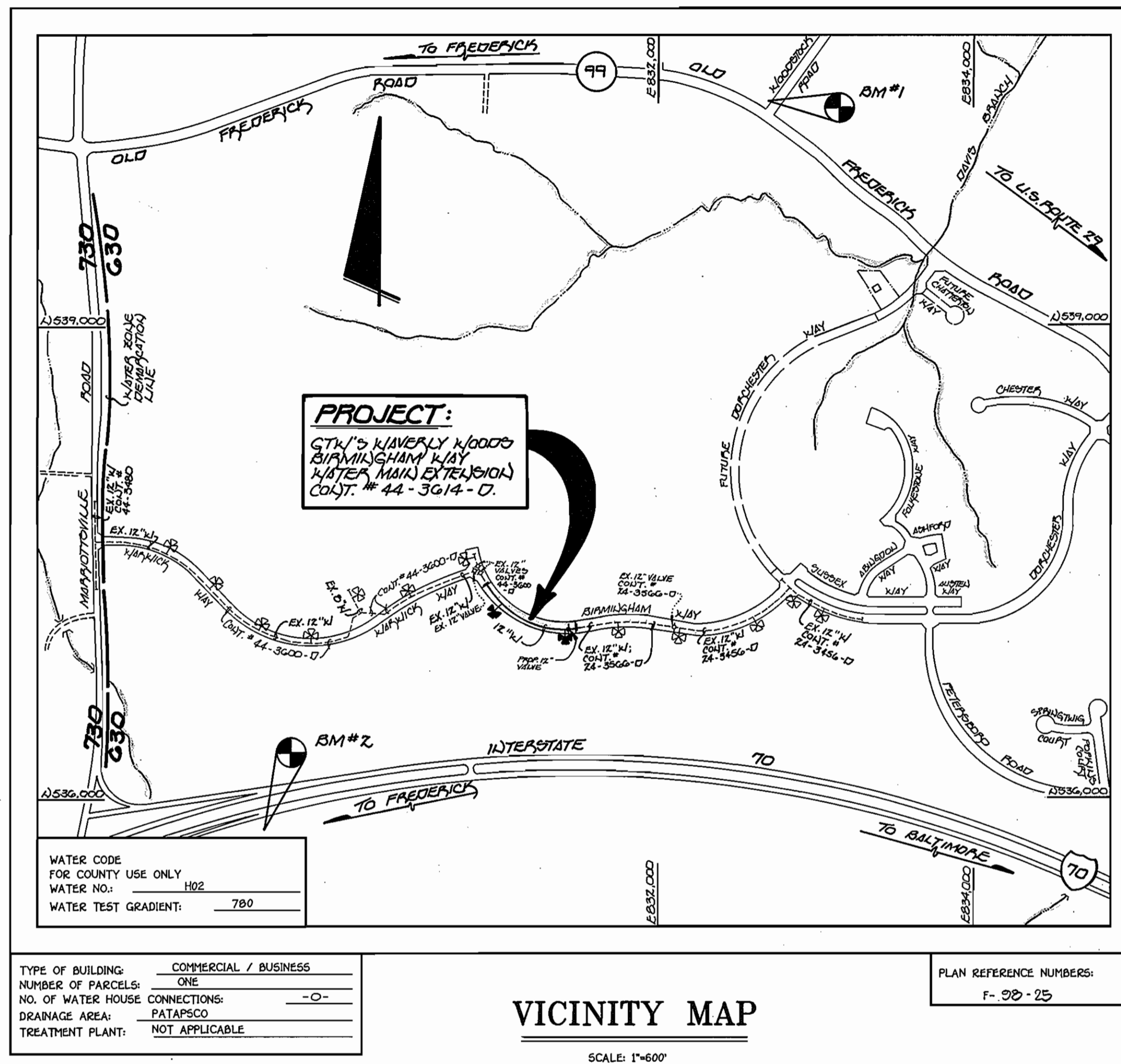


QUANTITIES				
ITEM	ESTIMATED	QUANTITIES	AS-BUILT	SUPPLIER
12" WATER	750 LF	754	D.I.P.	U.S. PIPE
8" WATER	66 LF	69	"	"
6" WATER	66 LF	66	"	"
FIRE HYDRANTS	2 EACH	2 EA.	CENTURION	MUELLER CO.
12" x 8" TEE	2 EACH	2 EA.	U.S. PIPE	U.S. PIPE
12" x 6" TEE	2 EACH	2 EA.	D.I.P.	"
8" VALVE	2 EACH	2 EA.	R.S.	MUELLER CO.
6" VALVE	2 EACH	2 EA.	"	"
8" PLUG BUTTRESS	2 EACH	2 EA.	"	"
12" VALVE	1 EA.	1 EA.	R.S.	"

NAME OF UTILITY CONTRACTOR: C.C.S.
SURVEY & DRAFTING DIVISION AS-BUILT DATE:



GENERAL NOTES

- APPROXIMATE LOCATION OF EXISTING MAINS ARE SHOWN. THE CONTRACTOR SHALL TAKE ALL NECESSARY PRECAUTIONS TO PROTECT EXISTING MAINS AND SERVICES AND MAINTAIN UNINTERRUPTED SUPPLY. ANY DAMAGE INCURRED SHALL BE REPAIRED IMMEDIATELY TO THE SATISFACTION OF THE ENGINEER AT THE CONTRACTOR'S EXPENSE.
- ALL HORIZONTAL CONTROLS ARE BASED ON MARYLAND STATE COORDINATES.
- ALL VERTICAL CONTROLS ARE BASED ON U.S.G.S. DATUM.
- ALL PIPE ELEVATIONS ARE INVERT ELEVATIONS.
- CLEAR ALL UTILITIES BY A MINIMUM OF 6". CLEAR ALL POLES BY 2'-0" MINIMUM.
- FOR DETAILS NOT SHOWN ON THE DRAWINGS, AND FOR MATERIALS AND CONSTRUCTION METHODS, USE HOWARD COUNTY DESIGN MANUAL VOLUME IV, STANDARD SPECIFICATIONS AND DETAILS FOR CONSTRUCTION (99) AMENDMENTS) THE CONTRACTOR SHALL HAVE A COPY OF VOLUME IV ON THE JOB SITE.
- WHERE TEST PITS HAVE BEEN MADE ON EXISTING UTILITIES, THEY ARE NOTED BY THE SYMBOL \square AT THE LOCATION OF THE TEST PIT. A NOTE OR NOTES CONTAINING THE RESULTS OF THE TEST PIT OR PITS IS INCLUDED ON THE DRAWINGS. EXISTING UTILITIES IN THE VICINITY OF THE PROPOSED WORK FOR WHICH TEST PITS HAVE NOT BEEN DUG SHALL BE VERIFIED BY THE CONTRACTOR TO HIS OWN SATISFACTION. ANY DAMAGE TO EXISTING FACILITIES DUE TO THE CONTRACTOR'S NEGLIGENCE SHALL BE REPAIRED AT THE CONTRACTOR'S EXPENSE.
- CONTRACTOR SHALL NOTIFY THE FOLLOWING UTILITIES OR AGENCIES AT LEAST FIVE WORKING DAYS BEFORE STARTING WORK SHOWN ON THESE PLANS:
 - STATE HIGHWAY ADMINISTRATION - 531-5533
 - BALTIMORE GAS & ELECTRIC CO. - CONTRACTOR SERVICES - 850-4620
 - BALTIMORE GAS & ELECTRIC CO. - UNDER GROUND DAMAGE CONTROL - 787-9068
 - MISS UTILITY - 1-800-257-7777
 - COLONIAL PIPELINE CO. - 795-1390
 - BUREAU OF UTILITIES, HOWARD COUNTY DEPARTMENT OF PUBLIC WORKS - 313-4900
- TREES AND SHRUBS ARE TO BE PROTECTED FROM DAMAGE TO MAXIMUM EXTENT. TREES AND SHRUBS LOCATED WITHIN THE CONSTRUCTION STRIP ARE NOT TO BE REMOVED OR DAMAGED BY THE CONTRACTOR.
- CONTRACTOR SHALL REMOVE TREES, STUMPS AND ROOTS ALONG THE LINE OF EXCAVATION. PAYMENT FOR SUCH REMOVAL SHALL BE INCLUDED IN THE UNIT PRICE BID FOR CONSTRUCTION OF THE MAIN.
- ALL SEWER MAINS SHALL BE D.I.P. OR P.V.C. UNLESS OTHERWISE NOTED.
- ALL MANHOLES SHALL BE 4'-0" INSIDE DIAMETER UNLESS OTHERWISE NOTED.
- T.B. DENOTES TEST BORING.
- MANHOLES SHOWN WITH 12" AND 16" WALLS ARE FOR BRICK MANHOLES ONLY.
- MANHOLES DESIGNATED W.T. IN PLAN AND PROFILE SHALL HAVE WATERTIGHT FRAME AND COVERS, STANDARD DETAIL G 5.52.
- WHERE WATERTIGHT MANHOLE FRAME AND COVER IS USED, SET TOP OF FRAME 1'-6" ABOVE FINISHED GRADE UNLESS OTHERWISE NOTED ON THE PLANS OR IN THE SPECIFICATIONS.
- HOUSES WITH THE SYMBOL "C.N.S." INDICATES THAT THE CELLAR CANNOT BE SERVED.
- ALL WATER HOUSE CONNECTIONS SHALL BE FOR INSIDE METER SETTING, UNLESS OTHERWISE NOTED ON THE PLANS OR IN THE SPECIFICATIONS.
- MANHOLES LOCATED WITHIN THE PROPOSED ROADWAY SHALL HAVE STANDARD HEAVY TRAFFIC MANHOLE FRAMES AND COVERS, STANDARD DETAIL G5.51.
- WATER MAINS AND WATER HOUSE CONNECTION LINES MUST BE PLACED AS TO HAVE ONE (1) FOOT SEPARATION FROM THE SEWER MAIN OR SEWER HOUSE CONNECTION AS THEY PASS ABOUT IT.
- ALL WATER MAINS SHALL BE D.I.P., CLASS 52 UNLESS OTHERWISE NOTED.
- TOPS OF ALL WATER MAINS TO HAVE A MINIMUM OF 3'-1/2' COVER UNLESS OTHERWISE NOTED.
- VALVES ADJACENT TO TREES SHALL BE STRAPPED TO TREES.
- ALL FITTINGS SHALL BE BUTTRESSED OR ANCHORED WITH CONCRETE IN ACCORDANCE WITH THE STANDARD DETAILS UNLESS OTHERWISE PROVIDED FOR ON THE DRAWINGS.
- FIRE HYDRANTS SHALL BE SET TO THE BURY LINE ELEVATION SHOWN ON THE DRAWINGS. ALL FIRE HYDRANTS SHALL BE RESTRAINED AND BUTTRESSED WITH CONCRETE IN ACCORDANCE WITH THE STANDARD DETAILS (W11 AND W213). SOIL AROUND THE FIRE HYDRANT SHALL BE COMPACTED IN ACCORDANCE WITH SECTION 1000 AND 1005 OF THE STANDARD SPECIFICATIONS.
- THE CONTRACTOR SHALL NOT OPERATE ANY WATER MAIN VALVES ON THE EXISTING WATER SYSTEM.
- ALL D.I.P. FITTINGS SHALL BE IN ACCORDANCE WITH AWWA SPECIFICATIONS C-153; DUCTILE IRON COMPACT FITTINGS, 3-INCH THROUGH 12-INCH FOR WATER AND OTHER LIQUIDS.
- THE CONTRACTOR SHALL NOTIFY THE BUREAU OF HIGHWAYS, HOWARD COUNTY, (410) 313-2450 AT LEAST FIVE WORKING DAYS BEFORE ANY OPEN CUT OF ANY COUNTY ROAD OR BORING/JACKING OPERATION IN COUNTY ROADS FOR LAYING WATER/SEWER MAINS OR HOUSE CONNECTIONS. THE APPROVAL OF THESE DRAWINGS WILL CONSTITUTE COMPLIANCE WITH DPW REQUIREMENTS PER SECTION 10.114(B) OF THE HOWARD COUNTY CODE.

CONTRACT NO. 44-3614-D
G.T.W.'S WAVERLY WOODS
BIRMINGHAM WAY
WATER MAIN EXTENSION
HOWARD COUNTY, MARYLAND

REVIEWED FOR HOWARD COUNTY SOIL CONSERVATION DISTRICT AND MEETS TECHNICAL REQUIREMENTS.
Cheryl Simmons 1/16/98
 U.S.D.A. NATURAL RESOURCES CONSERVATION SERVICE DATE

THIS DOCUMENT IS APPROVED FOR EROSION AND SEDIMENT CONTROL BY HOWARD SOIL CONSERVATION DISTRICT.
 APPROVED: *John P. Peterson* 1/16/98
 HOWARD SOIL CONSERVATION DISTRICT DATE

SEDIMENT CONTROL MEASURES FOR THIS CONTRACT WILL BE IMPLEMENTED IN ACCORDANCE WITH SECTION 219 OF THE HOWARD COUNTY DESIGN MANUAL & STANDARDS AND SPECIFICATIONS FOR SOIL EROSION AND SEDIMENT CONTROL IN DEVELOPING AREAS AS SHOWN ON THESE PLANS AND UNDER F-30-25

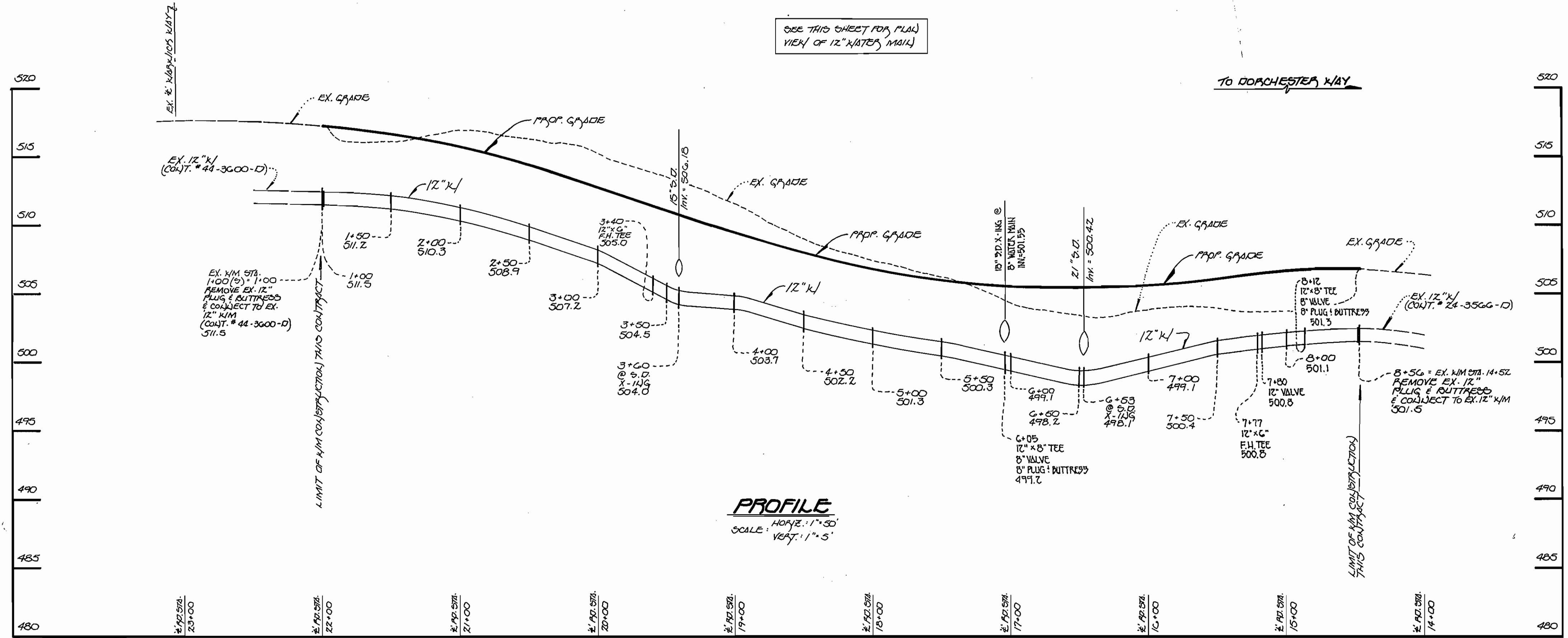
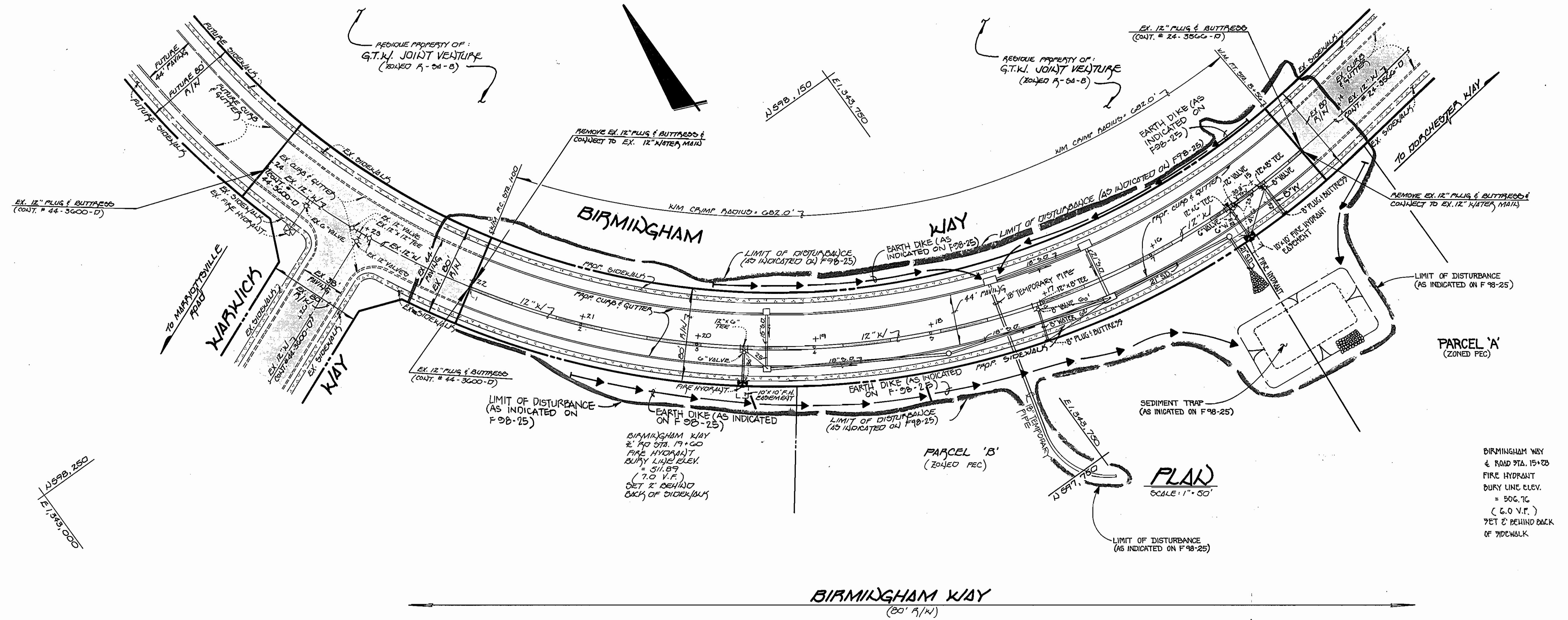
Michael J. McCann FOR WAVERLY DEVELOPMENT CORP. 6-9-97
 SIGNATURE OF DEVELOPER DATE

BENCH MARKS

BM#1 - HOWARD COUNTY CONTROL STATION #1012 (1/10/83)
 (NEAR THE INTERSECTION OF MARYLAND ROUTE 79 & WOODSTOCK ROAD)
 1) 601, 060.177 ELEV. = 445.571
 2) 345, 330.750

BM#2 - HOWARD COUNTY CONTROL STATION #16E1 (1/10/83)
 (NEAR THE INTERSECTION OF U.S. ROUTE 70 & MARYNOTTOWILLE ROAD)
 1) 593, 250.932 ELEV. = 309.924
 2) 340, 192.711

DEPARTMENT OF PUBLIC WORKS HOWARD COUNTY, MARYLAND <i>Michael A. Swain</i> 12/22/97 CHIEF, BUREAU OF UTILITIES DATE	DEPARTMENT OF PLANNING AND ZONING HOWARD COUNTY, MARYLAND <i>John P. Peterson</i> 1/17/98 CHIEF, DEVELOPMENT ENGINEERING DIVISION DATE	Fisher, Collins & Carter, Inc. CIVIL ENGINEERING CONSULTANTS & LAND SURVEYORS CENTRAL SQUARE OFFICE PARK 10272 Baltimore National Pike Ellicott City, Maryland 21042 (410) 461-2855 TERRELL A. FISHER	DESIGNED BY: M.J.M. DRAWN BY: M.J.M. / J.M.S. CHECKED BY: P.W.K. DATE: DECEMBER, 1997 BY NO. REVISION DATE	"AS-BUILT" TITLE SHEET 600' SCALE MAP NO. 16 BLOCK NO. 4 and 5 F.C.C. WORK ORDER NO. 30025 FILE NAME: G:/DRAWINGS/30025/	G.T.W.'S WAVERLY WOODS BIRMINGHAM WAY WATER MAIN EXTENSION CONTRACT NO. 44-3614-D THIRD ELECTION DISTRICT HOWARD COUNTY, MARYLAND SCALE AS SHOWN SHEET 1 OF 2
--	---	--	--	--	--



12" WATER MAIN: BIRMINGHAM WAY

CONTRACT NO. 44-3614-D
 G.T.W.'S WAVERLY WOODS
 BIRMINGHAM WAY
 WATER MAIN EXTENSION
 HOWARD COUNTY, MARYLAND

DEPARTMENT OF PUBLIC WORKS
 HOWARD COUNTY, MARYLAND
 Michael A. Scavaniello
 CHIEF, BUREAU OF UTILITIES
 12/22/97
 DATE

DEPARTMENT OF PLANNING AND ZONING
 HOWARD COUNTY, MARYLAND
 [Signature]
 CHIEF, DEVELOPMENT ENGINEERING DIVISION
 1/7/98
 DATE

Fisher, Collins & Carter, Inc.
 CIVIL ENGINEERING CONSULTANTS &
 LAND SURVEYORS
 CENTENNIAL SQUARE OFFICE PARK
 10272 Baltimore National Pike
 Ellicott City, Maryland 21042
 (410) 481-2855
 [Seal of State of Maryland]
 TERRELL A. FISHER

DESIGNED BY: M.J.M.
 DRAWN BY: M.J.M.
 CHECKED BY: P.W.K.
 DATE: 12/22/97
 DECEMBER, 1997
 REVISION: ASBUILT CONDITIONS ADDED TO PLAN
 DATE: 02/29/98

"ASBUILT"
 WATER MAIN
 PLAN VIEW AND PROFILE
 600' SCALE MAP NO. 15 BLOCK NO. 4 and 5
 F.C.C. WORK ORDER NO. 30023
 FILE NAME: G/DRAWINGS/30023/

G.T.W.'S WAVERLY WOODS
 BIRMINGHAM WAY
 WATER MAIN EXTENSION
 CONTRACT NO. 44-3614-D
 THIRD ELECTION DISTRICT
 HOWARD COUNTY, MARYLAND

SCALE AS SHOWN
 SHEET 2 OF 2