

SHEET INDEX	
NO.	DESCRIPTION
1	VICINITY MAP & GENERAL NOTES.
2	PLAN & PROFILE OF SEWER MAINS

QUANTITIES				
ITEM	QUANTITIES ESTIMATED	AS-BUILT		
		QUANTITIES	TYPE	MANUFACTURER/SUPPLIER
8" SEWER	1047 LF	1029 LF	PVC SDR 35	J.M. Manufacturing / Filitec
MANHOLES	34 W/ 4 EA.	4 EA.	Precast	Atlantic Conc. Products

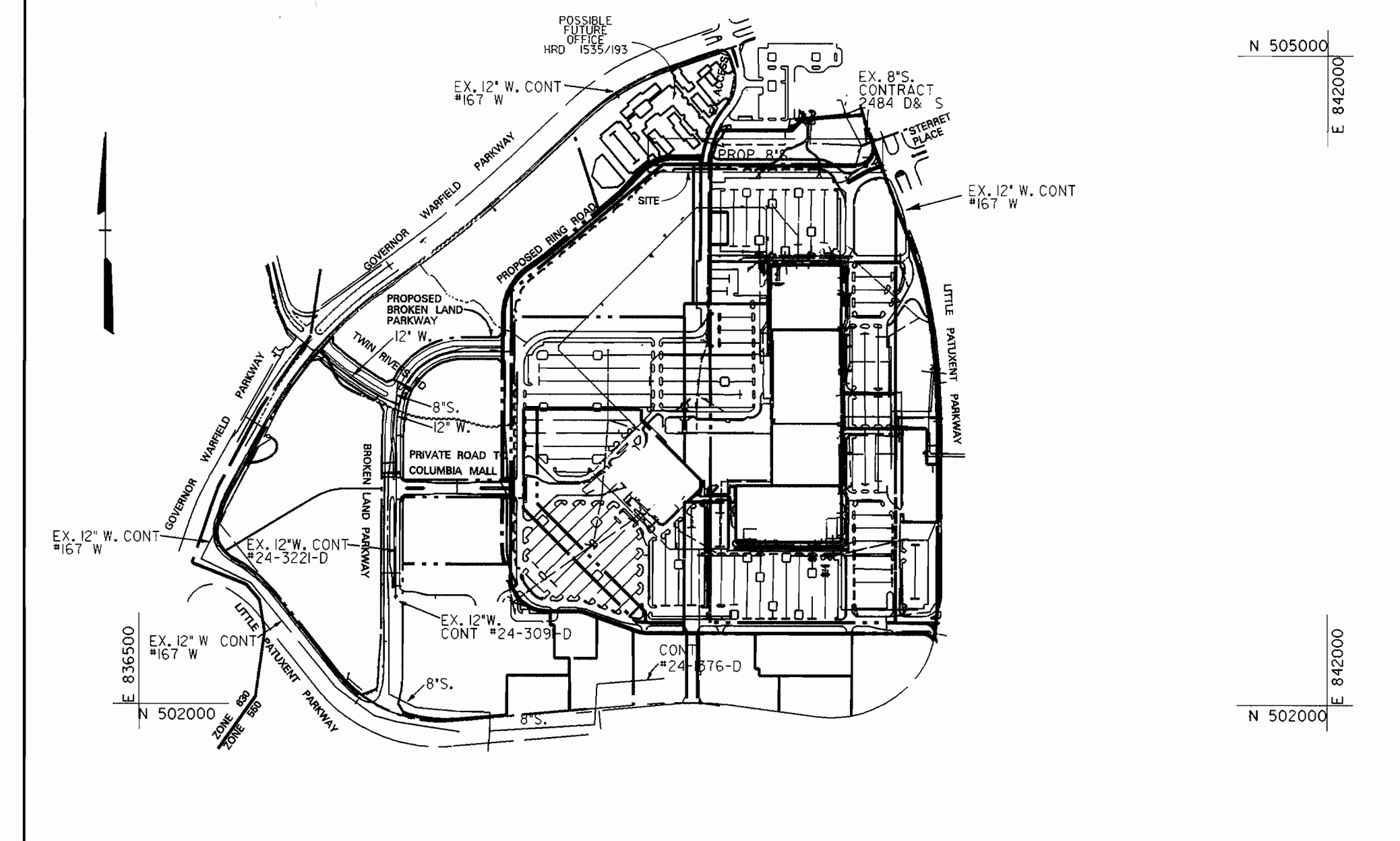
NAME OF UTILITY CONTRACTOR **W.F. WILSON**
 SURVEY AND DRAFTING DIVISION AS-BUILT DATE _____

GENERAL NOTES

- PART I**
- APPROXIMATE LOCATION OF EXISTING MAINS ARE SHOWN. THE CONTRACTOR SHALL TAKE ALL NECESSARY PRECAUTIONS TO PROTECT EXISTING MAINS AND SERVICES AND MAINTAIN UNINTERRUPTED SUPPLY. ANY DAMAGE INCURRED SHALL BE REPAIRED IMMEDIATELY TO THE SATISFACTION OF THE ENGINEER AT THE CONTRACTOR'S EXPENSE.
 - ALL HORIZONTAL CONTROLS ARE BASED ON MARYLAND STATE COORDINATES (NORTH AMERICAN DATUM OF 1983 (NAD 83)).
 - ALL VERTICAL CONTROLS ARE BASED ON U.S.G.S. DATA.
 - ALL PIPE ELEVATIONS SHOWN ARE INVERT ELEVATIONS.
 - CLEAR ALL UTILITIES BY A MINIMUM OF 6". CLEAR ALL POLES BY 2'-0" MINIMUM OR TUNNEL AS REQUIRED. THE OWNER HAS CONTACTED THE UTILITY COMPANIES AND HAS MADE ARRANGEMENTS FOR BRACING OF POLES AS SHOWN ON THE DRAWINGS. IN THE EVENT THE CONTRACTOR'S WORK REQUIRES THE BRACING OF ADDITIONAL POLES, ANY COST INCURRED BY THE OWNER FOR BRACING OF ADDITIONAL POLES OR DAMAGES SHALL BE DEDUCTED FROM MONEY OWED THE CONTRACTOR. THE CONTRACTOR SHALL COORDINATE WITH THE UTILITY COMPANIES TO SCHEDULE THE BRACING OF THE POLES.
 - FOR DETAILS NOT SHOWN ON THE DRAWINGS AND FOR MATERIALS AND CONSTRUCTION METHODS USE HOWARD COUNTY DESIGN MANUAL, VOLUME IV, STANDARD SPECIFICATIONS AND DETAIL FOR CONSTRUCTION (LATEST EDITION). THE CONTRACTOR SHALL HAVE A COPY OF VOLUME IV ON THE JOB.
 - WHERE TEST PITS HAVE BEEN MADE ON EXISTING UTILITIES, THEY ARE NOTED BY THE SYMBOL AT THE LOCATION OF THE TEST PIT. A NOTE OR NOTES CONTAINING THE RESULTS OF THE TEST PIT OR PITS IS INCLUDED ON THE DRAWINGS. EXISTING UTILITIES IN THE VICINITY OF THE PROPOSED WORK FOR WHICH TEST PITS HAVE NOT BEEN DUG SHALL BE LOCATED BY THE CONTRACTOR TWO WEEKS IN ADVANCE OF CONSTRUCTION OPERATIONS AT HIS OWN EXPENSE.
 - CONTRACTOR SHALL NOTIFY THE FOLLOWING UTILITY COMPANIES OR AGENCIES AT LEAST FIVE WORKING DAYS BEFORE STARTING WORK SHOWN ON THESE PLANS:
- | | |
|--|----------------|
| AT&T | 1-410-865-3803 |
| STATE HIGHWAY ADMINISTRATION | 1-410-531-5533 |
| B&E CO. CONTRACTOR SERVICES | 1-410-850-4620 |
| B&E CO. UNDER GROUND DAMAGE CONTROL | 1-410-187-9068 |
| MISS UTILITY | 1-800-257-7777 |
| COLONIAL PIPELINE CO. | 1-410-795-1390 |
| HOWARD COUNTY DEPARTMENT OF PUBLIC WORKS | 1-410-313-4900 |
| BUREAU OF UTILITIES | 1-410-597-8585 |
| CHESAPEAKE & POTOMAC TELEPHONE CO. | 1-410-597-8585 |

- TREES AND SHRUBS ARE TO BE PROTECTED FROM DAMAGE TO MAXIMUM EXTENT. TREES AND SHRUBS LOCATED WITHIN THE CONSTRUCTION STRIP ARE NOT TO BE REMOVED OR DAMAGED BY THE CONTRACTOR.
- CONTRACTOR SHALL REMOVE TREES, STUMPS, AND ROOTS ALONG LINE OF EXCAVATION. PAYMENT FOR SUCH REMOVAL SHALL BE INCLUDED IN THE UNIT PRICE BID FOR CONSTRUCTION OF THE MAIN.
- THE CONTRACTOR SHALL NOTIFY THE BUREAU OF HIGHWAYS, HOWARD COUNTY, AT (410) 313-2450 AT LEAST FIVE WORKING DAYS BEFORE ANY OPEN CUT OF ANY COUNTY ROAD OR BORING/JACKING OPERATION IN COUNTY ROADS FOR LAYING WATER/SEWER MAINS OR HOUSE CONNECTIONS. THE APPROVAL OF THESE DRAWINGS WILL CONSTITUTE COMPLIANCE WITH DPW REQUIREMENTS PER SECTION 18.11(4) OF THE HOWARD COUNTY CODE.

- PART II - SEWER**
- ALL SEWER MAINS SHALL BE P.V.C. OR D.I.P. CLASS 52 UNLESS OTHERWISE NOTED.
 - ALL MANHOLES SHALL BE 4' - 0" INSIDE DIAMETER UNLESS OTHERWISE NOTED.
 - FORCE MAINS SHALL BE D.I.P. ONLY.
 - MANHOLES DESIGNATED W.T. IN PLAN AND PROFILE SHALL HAVE WATERTIGHT FRAME AND COVERS, STANDARD DETAIL G5.52. WHERE WATERTIGHT MANHOLE FRAME AND COVER IS USED, SET TOP OF FRAME 1" - 6" ABOVE FINISHED GRADE UNLESS OTHERWISE NOTED ON THE DRAWINGS.
 - HOUSE(S) WITH THE SYMBOL 'C.N.S.' INDICATES THAT CELLAR CANNOT BE SERVED.



VICINITY MAP

SCALE: 1" = 600'

TYPE OF BUILDING:	OFFICE BLDG.
NO. OF LOTS / PARCELS:	1
NO. OF WATER HOUSE CONNECTIONS:	0
NO. OF SEWER HOUSE CONNECTIONS:	0
DRAINAGE AREA:	LITTLE PATUXENT
TREATMENT PLANT:	LITTLE PATUXENT WATER QUALITY MANAGEMENT CENTER-SAVAGE HOWARD COUNTY
WATER CODE:	N/A
TEST GRADIENT:	N/A
SEWER CODE:	5600600

BENCHMARK

DESCRIPTION

ELEVATIONS SHOWN HEREON ARE BASED ON THE FOLLOWING TRAVERSE STATIONS ESTABLISHED BY FISHER, COLLINS AND CARTER, INC. (NGVD 29 VERTICAL DATUM)
 TR 906 N 504280.1630 E 838550.3680 ELEV. 381.500
 TR 907 N 504400.6701 E 838647.7701 ELEV. 394.150

REVIEWED FOR HOWARD SOIL CONSERVATION DISTRICT AND MEETS TECHNICAL REQUIREMENT

[Signature] 7/1/97
 SIGNATURE DATE

THIS DEVELOPMENT PLAN IS APPROVED FOR SOIL EROSION AND SEDIMENT CONTROL BY THE HOWARD COUNTY CONSERVATION DISTRICT.

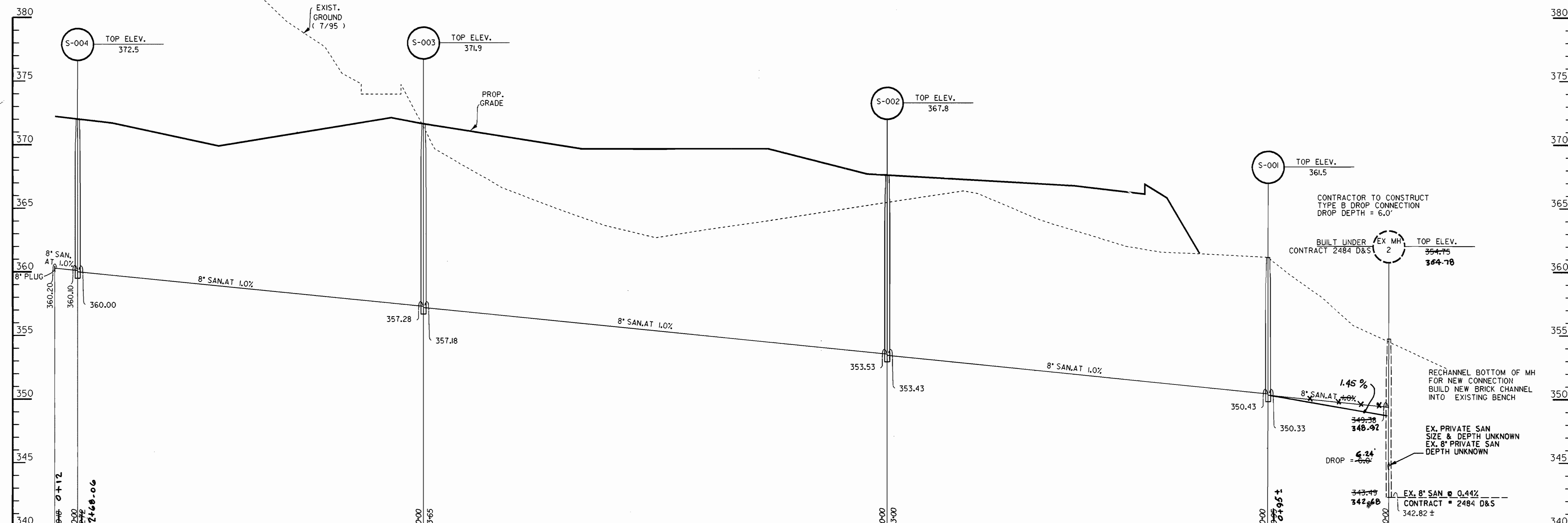
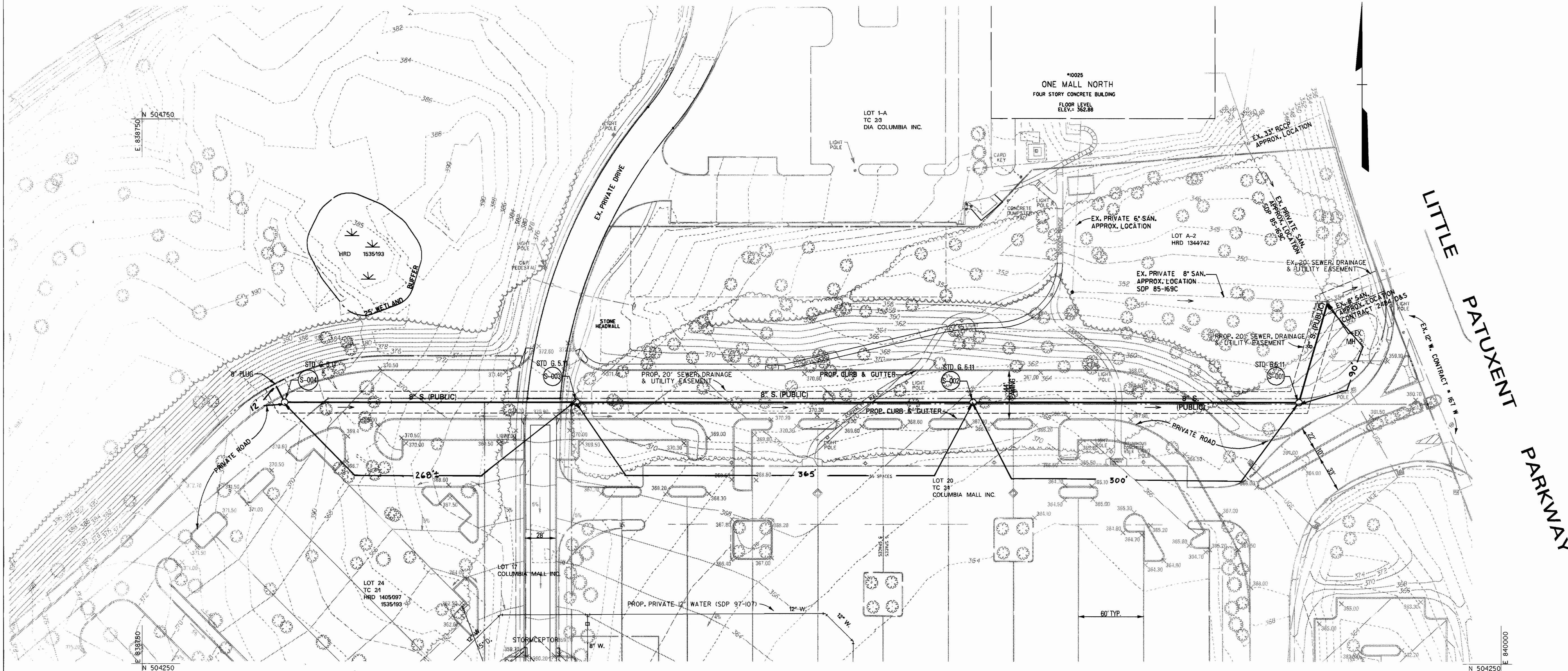
APPROVED *[Signature]* 7/1/97
 HOWARD S.C.D. DATE

SEDIMENT CONTROL MEASURES WILL BE IMPLEMENTED IN ACCORDANCE WITH SECTION 219 OF THE SPECIFICATIONS AND WITH SDP PLANS 97-107.

DEPARTMENT OF PUBLIC WORKS HOWARD COUNTY, MARYLAND <i>[Signature]</i> 6-24-97 CHIEF - BUREAU OF UTILITIES - DATE	DEPARTMENT OF PLANNING & ZONING HOWARD COUNTY, MARYLAND <i>[Signature]</i> 7/1/97 CHIEF - DEVELOPMENT ENGINEERING DIVISION - DATE	Daft · McCune · Walker, Inc. A Team of Land Planners, Landscape Architects, Engineers, Surveyors & Environmental Professionals. 200 East Pennsylvania Avenue Towson, Maryland 21286 410 296 3333 Fax 296 4705	DESIGN BY: RLH DRAWN BY: JEF CHECKED BY: JWR DATE: 6-18-97	BY NO. _____ REVISION _____ DATE _____	VICINITY PLAN & GENERAL NOTES	AS-BUILTS THE MALL IN COLUMBIA PHASE I EXPANSION TOWN CENTER SECTION 2 AREA 1 ELECTION DISTRICT 5 CONTRACT NO. 20-3613-D	SCALE SEE PLAN SHEET 1 OF 2
---	--	--	---	--	--	---	--------------------------------

For Use By: 06/14/04 097 ©1999/04/06/09/01/02

MH#	N	E
S-1	504489.90	838814.27
S-2	504489.90	839514.27
S-3	504489.90	839149.27
S-4	504489.90	838881.21



AS-BUILT

DEPARTMENT OF PUBLIC WORKS
HOWARD COUNTY, MARYLAND

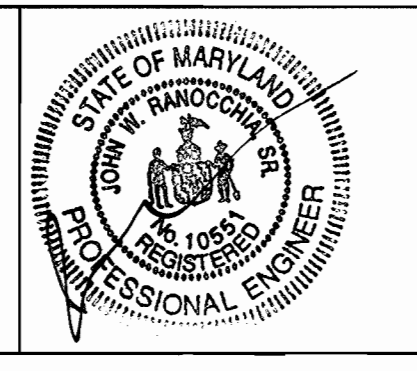
Robert W. Beaman 6-24-97
CHIEF - BUREAU OF UTILITIES - DATE

DEPARTMENT OF PLANNING & ZONING
HOWARD COUNTY, MARYLAND

John J. Danvers 7/2/97
CHIEF - DEVELOPMENT ENGINEERING DIVISION - DATE

DMW
Daft · McCune · Walker, Inc.

A Team of Land Planners, 200 East Pennsylvania Avenue
Landscape Architects, Towson, Maryland 21286
Engineers, Surveyors & Environmental Professionals 410 296 3333
Fax 296 4705



DESIGN BY:	RLH
DRAWN BY:	JEF
CHECKED BY:	JWR
DATE:	6-18-97
BY NO.	
REVISION	
DATE	

600 SCALE MAP NO.	30
BLOCK NO.	20

SEWER PLAN

THE MALL IN COLUMBIA
PHASE I EXPANSION
TOWN CENTER
SECTION 2 AREA 1
ELECTION DISTRICT 5

CONTRACT NO. 20-3613-D

SCALE
1" = 50'

SHEET
2 OF 2