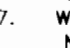


SHEET INDEX	
NO.	DESCRIPTION
1	WATER AND SEWER TITLE SHEET
2	PLAN OF WATER AND SEWER MAINS
3	PROFILES OF WATER AND SEWER MAINS
4	PROFILES OF WATER AND SEWER MAINS

ARBOR WOODS WATER AND SEWER CONSTRUCTION PLANS CONTRACT NO. 14-3588-D

GENERAL NOTES

PART 1 - GENERAL

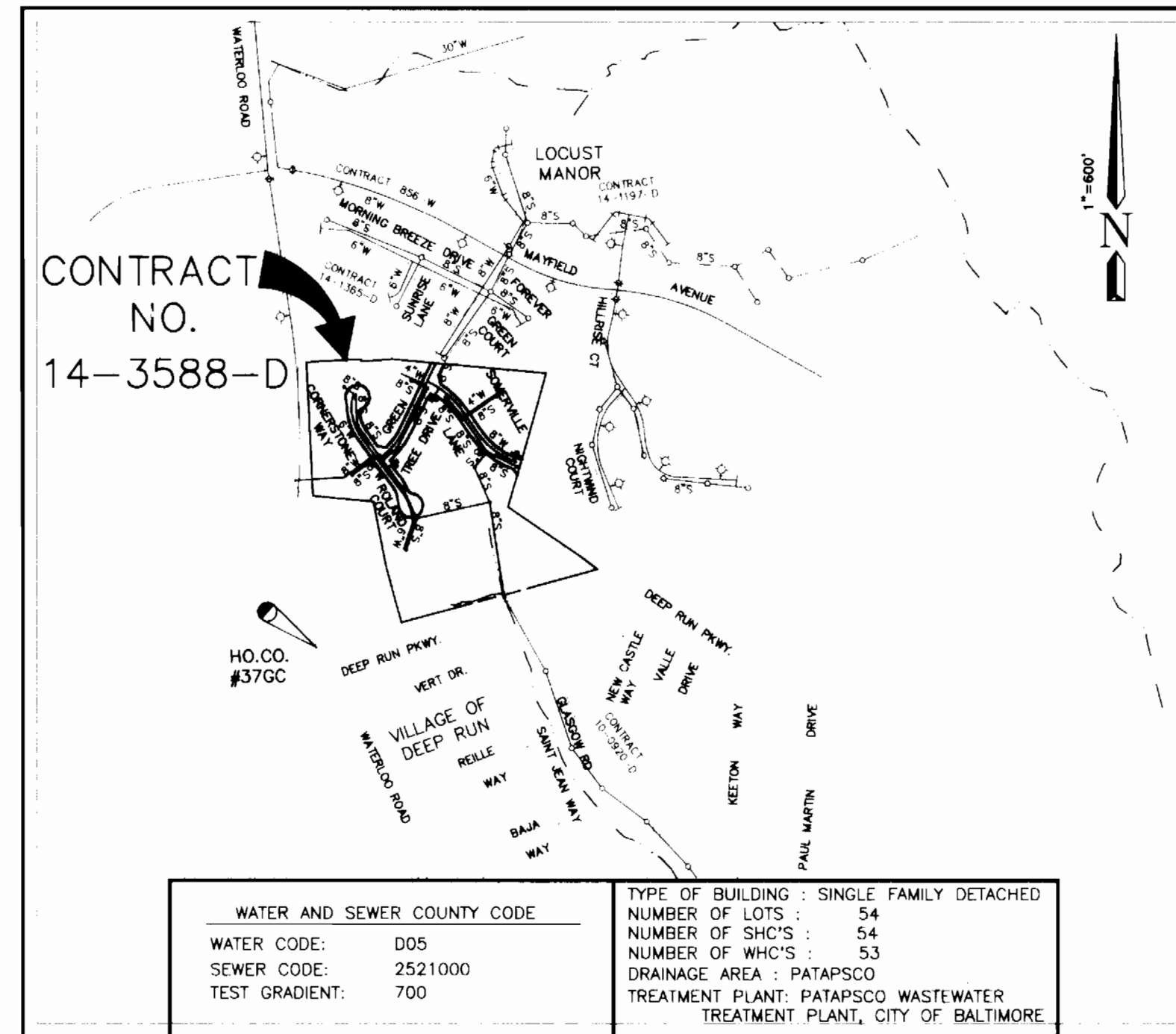
- APPROXIMATE LOCATION OF EXISTING MAINS ARE SHOWN. THE CONTRACTOR SHALL TAKE ALL NECESSARY PRECAUTIONS TO PROTECT EXISTING MAINS AND SERVICES AND MAINTAIN UNINTERRUPTED SUPPLY. ANY DAMAGE INCURRED SHALL BE REPAIRED IMMEDIATELY TO THE SATISFACTION OF THE ENGINEER AT THE CONTRACTOR'S EXPENSE.
- ALL HORIZONTAL CONTROLS ARE BASED ON MARYLAND STATE COORDINATES (NAD 83).
- ALL VERTICAL CONTROLS ARE BASED ON U.S.G.S. DATA.
- ALL PIPE ELEVATIONS SHOWN ARE INVERT ELEVATIONS.
- 2'-0" MINIMUM OR TUNNEL AS REQUIRED. THE OWNER HAS CONTACTED THE UTILITY COMPANIES AND HAS MADE ARRANGEMENTS FOR BRACING OF POLES AS SHOWN ON THE DRAWINGS. IN THE EVENT THE CONTRACTOR'S WORK REQUIRES THE BRACING OF ADDITIONAL POLES OR DAMAGES SHALL BE DEDUCTED FROM MONEY OWED THE CONTRACTOR. THE CONTRACTOR SHALL COORDINATE WITH THE UTILITY COMPANIES TO SCHEDULE THE BRACING OF THE POLES.
- FOR DETAILS NOT SHOWN ON THE DRAWINGS, AND FOR MATERIALS AND CONSTRUCTION METHODS, USE HOWARD COUNTY DESIGN MANUAL VOLUME IV, STANDARD SPECIFICATIONS AND DETAIL FOR CONSTRUCTION. THE CONTRACTOR SHALL HAVE A COPY OF VOLUME IV ON THE JOB.
- WHERE TEST PITS HAVE BEEN MADE ON EXISTING UTILITIES, THEY ARE NOTED BY THE SYMBOL  AT THE LOCATION OF THE TEST PIT. A NOTE OR NOTES CONTAINING THE RESULTS OF THE TEST PIT OR PITS IS INCLUDED ON THE DRAWINGS. EXISTING UTILITIES IN THE VICINITY OF THE PROPOSED WORK FOR WHICH TEST PITS HAVE NOT BEEN DUG SHALL BE LOCATED BY THE CONTRACTOR TWO WEEKS IN ADVANCE OF CONSTRUCTION OPERATIONS AT HIS OWN EXPENSE.
- CONTRACTOR SHALL NOTIFY THE FOLLOWING UTILITY COMPANIES OR AGENCIES AT LEAST FIVE WORKING DAYS BEFORE STARTING WORK SHOWN ON THESE PLANS:
 - STATE HIGHWAY ADMINISTRATION.....531-5533
 - BALTIMORE GAS & ELECTRIC CO.....850-4620
 - BALTIMORE GAS & ELECTRIC CO.....787-9068
 - MISS UTILITY.....1-800-257-7777
 - COLONIAL PIPELINE CO.....795-1390
 - BUREAU OF UTILITIES, HOWARD CO. DEPT. OF PUBLIC WORKS.313-4900
- TREES AND SHRUBS ARE TO BE PROTECTED FROM DAMAGE TO MAXIMUM EXTENT. TREES AND SHRUBS LOCATED WITHIN THE CONSTRUCTION STRIP ARE NOT TO BE REMOVED OR DAMAGED BY THE CONTRACTOR. CONTRACTOR SHALL REMOVE TREES, STUMPS AND ROOTS ALONG LINE OF EXCAVATION. PAYMENT FOR SUCH REMOVAL SHALL BE INCLUDED IN THE UNIT PRICE BID FOR CONSTRUCTION OF THE MAIN.
- PLACE REGULATION "MEN WORKING" AND WARNING SIGNS AS REQUIRED TO COMPLY WITH MARYLAND STATE HIGHWAY ADMINISTRATION MANUAL OF TRAFFIC CONTROL FOR HIGHWAY MAINTENANCE OPERATIONS.
- THE CONTRACTOR SHALL NOTIFY THE BUREAU OF HIGHWAYS, HOWARD COUNTY, AT (410) 313-2450 AT LEAST FIVE WORKING DAYS BEFORE ANY OPEN CUT OF ANY COUNTY ROAD OR BORING/JACKING OPERATION IN COUNTY ROADS FOR LAYING WATER/SEWER MAINS OR HOUSE CONNECTIONS. THE APPROVAL OF THESE DRAWINGS WILL CONSTITUTE COMPLIANCE WITH DPW REQUIREMENTS PER SECTION 18.114(g) OF THE HOWARD COUNTY CODE.
- SEDIMENT CONTROL AND STABILIZATION OF DISTURBED AREAS SHALL BE IN ACCORDANCE WITH ROAD CONSTRUCTION PLANS F-97-119.

PART 2 - WATER

- ALL WATER MAINS TO BE D.I.P. CLASS 52 UNLESS OTHERWISE NOTED.
- TOPS OF ALL WATER MAINS TO HAVE A MINIMUM OF 3'-1/2" COVER UNLESS OTHERWISE NOTED.
- VALVES ADJACENT TO TEES SHALL BE STRAPPED TO TEES.
- ALL FITTINGS SHALL BE BUTTRESSED OR ANCHORED WITH CONCRETE IN ACCORDANCE WITH THE STANDARD DETAILS UNLESS OTHERWISE PROVIDED FOR ON THE DRAWINGS.
- FIRE HYDRANTS SHALL BE SET TO THE BURY LINE. ELEVATIONS SHOWN ON THE DRAWINGS ALL FIRE HYDRANTS SHALL BE RESTRAINED AND BUTTRESSED WITH CONCRETE IN ACCORDANCE WITH STANDARD DETAILS. SOIL AROUND THE FIRE HYDRANT SHALL BE COMPACTED IN ACCORDANCE WITH SECTION 1000 AND 1005 OF THE STANDARD SPECIFICATIONS.
- THE CONTRACTOR SHALL NOT OPERATE ANY WATER MAIN VALVES ON THE EXISTING WATER SYSTEM.
- ALL WATER HOUSE CONNECTIONS SHALL BE FOR INSIDE METER SETTING UNLESS OTHERWISE NOTED ON PLANS OR IN SPECIFICATIONS.

PART 3 - SEWER

- ALL SEWER MAINS SHALL BE DIP OR P.V.C. UNLESS OTHERWISE NOTED.
- ALL MANHOLES SHALL BE 4' - 0" INSIDE DIAMETER UNLESS OTHERWISE NOTED.
- FORCE MAINS SHALL BE D.I.P. ONLY.
- MANHOLES SHOWN WITH 12" AND 16" WALLS ARE FOR BRICK MANHOLES ONLY.
- MANHOLES DESIGNATED W.T. IN PLAN AND PROFILE SHALL HAVE WATERTIGHT FRAME AND COVERS, STANDARD DETAIL G5.52. WHERE WATERTIGHT MANHOLE FRAME AND COVER IS USED, SET TOP OF FRAME 1" - 6" ABOVE FINISHED GRADE UNLESS OTHERWISE NOTED ON THE DRAWINGS.
- HOUSE(S) WITH THE SYMBOL "C.N.S." INDICATES THAT CELLAR CANNOT BE SERVED.



BENCH MARKS (NAD 83)

HO.CO. #37HC
3/4" REBAR AND ALUMINUM CAP 38.0' SOUTH OF THE EDGE OF PAVEMENT ON WATERLOO ROAD, 120' EAST OF THE GATEWAY TO WATERLOO COMMUNITY PARK.
N 552854.2141(FT) E 1372639.498(FT)
N 168510.3015(M) E 418381.3561(M)

HO.CO. #37GC
3/4" REBAR AND ALUMINUM CAP 13.9' WEST OF THE EDGE OF PAVEMENT ON WATERLOO ROAD, 0.15 MILES EAST OF THE INTERSECTION BETWEEN ROUTE 108 AND WATERLOO ROAD.
N 555250.7923(FT) E 1370946.362(FT)
N 169240.7800(M) E 417865.2869(M)

BENCH MARKS (NAD 27)

HO.CO. #2444001-R ELEV. 346.728'
CONC. MONUMENT SET FLUSH WITH SURFACE, 34.07' EAST OF THE EDGE OF PAVEMENT ALONG N.B. ROUTE 108
N 495673.696 E 858372.166

VICINITY MAP
SCALE: 1" = 600'

HOWARD SOIL CONSERVATION DISTRICT:
REVIEWED FOR HOWARD SOIL CONSERVATION DISTRICT AND MEETS TECHNICAL REQUIREMENTS

NATURAL RESOURCES CONSERVATION SERVICE _____ DATE _____

THIS PLAN IS APPROVED FOR SOIL EROSION AND SEDIMENT CONTROL BY THE HOWARD SOIL CONSERVATION DISTRICT.

HOWARD SOIL CONSERVATION DISTRICT _____ DATE _____

SEDIMENT CONTROL MEASURES FOR THIS CONTRACT WILL BE IMPLEMENTED IN ACCORDANCE WITH SECTION 219 OF THE HOWARD COUNTY STANDARD SPECIFICATIONS AND AS PER ROAD CONSTRUCTION PLANS F-00-00 F-97-119

ITEM	QUANTITIES ESTIMATED	AS-BUILT		
		QUANTITIES	TYPE	MANUFACTURER/SUPPLIER
8" WATER	1460 LF	1445 LF	CL 62 DIP	Atlantic States / A-1 Pipe
8" WATER	660 LF	702 LF	CL 62 DIP	Atlantic States / A-1 Pipe
8" WATER	180 LF	178 LF	CL 62 DIP	Atlantic States / A-1 Pipe
8" x 6" TEE	2	3	M.J. FHT	Tyler Pipe / A-1 Pipe
8" x 4" TEE	2	3	M.J. FHT	Tyler Pipe / A-1 Pipe
8" x 4" TEE	2	1	M.J. FHT	Tyler Pipe / A-1 Pipe
8" VALVES	4	6	set	Mueller / A-1 Pipe
4" VALVES	2	4	set	Mueller / A-1 Pipe
4" VALVES	2	1	set	Mueller / A-1 Pipe
FIRE HYDRANTS	1	1	set	Mueller / A-1 Pipe
12" WIC	200 LF	773 LF	set	Cerro / A-1 Pipe
12" WIC	240 LF	498 LF	set	Cerro / A-1 Pipe
8" DUCT & BUTTRESS	2	2	set	Tyler Pipe / A-1 Pipe
8" DUCT & BUTTRESS	2	1	set	Tyler Pipe / A-1 Pipe
8" CAP & BUTTRESS	2	1	set	Tyler Pipe / A-1 Pipe
8" SEWER	1869 LF	1806 LF	set	J.M. Manufacturing / A-1 Pipe
8" SEWER (DIP)	826 LF	839 LF	set	Atlantic States / A-1 Pipe
MANHOLES	18	15	set	Atlantic States / A-1 Pipe
12" x 8" TAPPING SL&V	1480 LF	1633 LF	set	J.M. Manufacturing / A-1 Pipe
NAME OF UTILITY CONTRACTOR: _____				
SURVEY AND DRAFTING AS-BUILT DATE: 11/04/07				

DEPARTMENT OF PUBLIC WORKS
HOWARD COUNTY, MARYLAND
Robert B. ... 5-22-11
CHIEF, BUREAU OF UTILITIES

DEPARTMENT OF PLANNING AND ZONING
HOWARD COUNTY, MARYLAND
Howard ... 6/6/07
CHIEF, DEVELOPMENT ENGINEERING DIVISION

TSA GROUP, INC.
planning • architecture • engineering • surveying
8480 Baltimore National Pike Suite 418
Ellicott City, Maryland 21043
Donald Moran

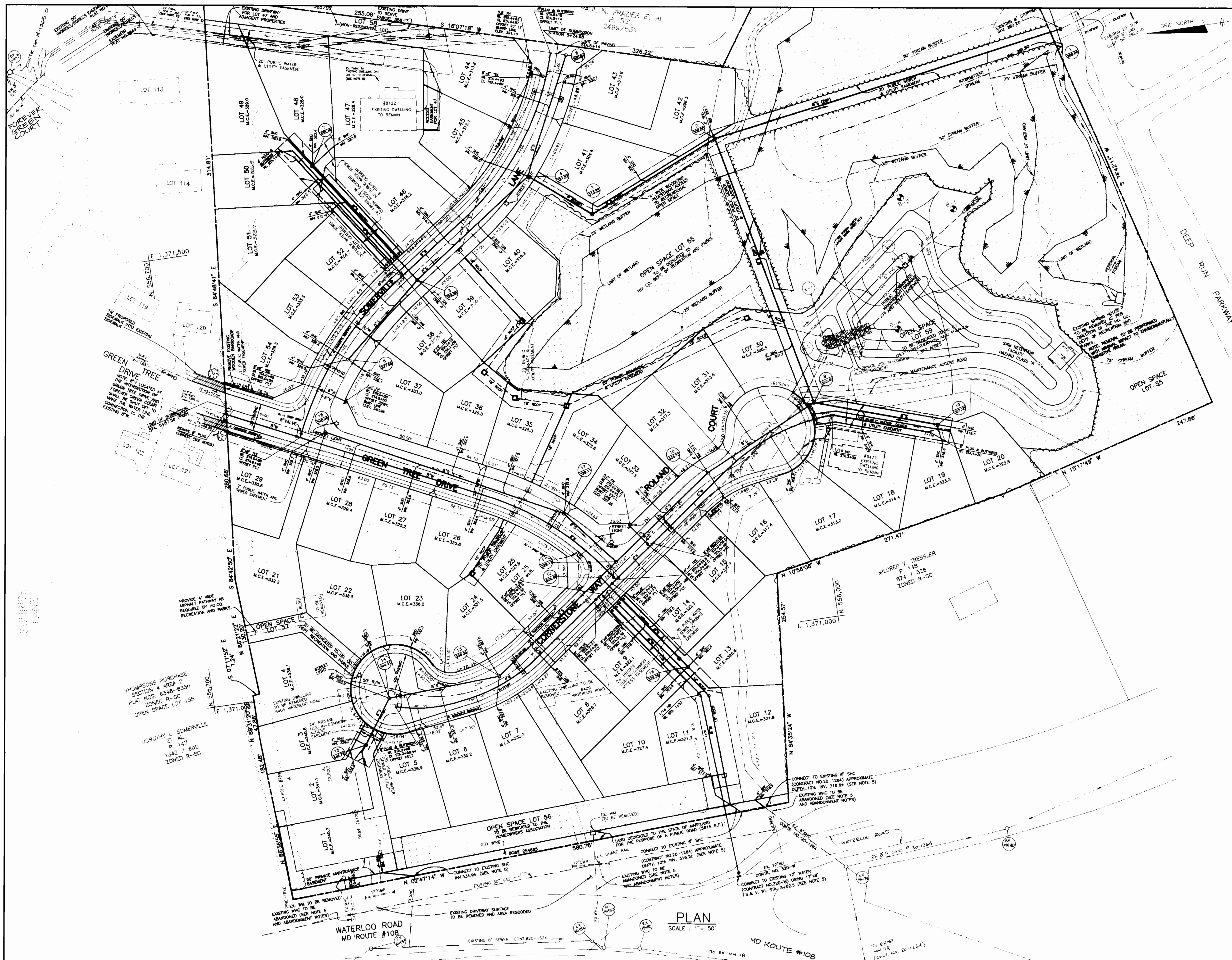
DES:	GWF				
DRN:	JR				
CHK:	GWF				
DATE:	4-4-97				
BY:	NO.				
REVISIONS:					

WATER AND SEWER
TITLE SHEET

600 SCALE MAP NO. 37 BLOCK 14 & 20

ARBOR WOODS
LOTS 1 THRU 59
1st ELECTION DISTRICT
CONTRACT NO. 14-3588-D

SCALE
AS SHOWN
SHEET
1 OF 4



WHC LOCATION DATA				WHC LOCATION DATA			
GREEN TREE DRIVE				CORNERSTONE WAY - NORTH			
LOT NO.	CL STATION	OFFSET		LOT NO.	COORDINATE	NORTH/EAST	
21/29	6+56.56	25.00 RT	1/2	N526647.3925	1470912.0884		
26/27	6+05.59	25.00 RT	3/4	N526647.0027	1470989.6053		
28	6+08.42	25.00 RT	1/3	N526648.8991	1470990.2638		
33/34	6+54.89	25.00 LF	1/3	N526671.0097	1470930.6312		
37/38	6+42.88	25.00 LF	1/2	N526679.8786	1470938.0152		
SOMERVILLE LANE				CORNERSTONE WAY - SOUTH			
LOT NO.	COORDINATE	NORTH/EAST		LOT NO.	CL STATION	OFFSET	
48	N526611.9195	E1371606.2640	2/3	2+18.74	34.00 LF		
49	N526640.2496	E1371603.1983	1/3	2+07.56	24.16 LF		
50	N526659.8839	E1371644.3639	2/3	2+08.59	25.00 LF		
51	N526495.7458	E1371628.8399	24/25	1+18.29	25.00 RT		
LOT NO.	CL STATION	OFFSET		LOT NO.	COORDINATE	NORTH/EAST	
39	2+59.80	25.00 RT		19	N526877.4626	E1371178.8471	
40	2+52.96	25.00 RT		20	N526846.4202	E1371186.3248	
41/42	4+44.70	25.00 RT		30	N526851.7881	E1371263.4507	
43	4+93.62	25.00 RT					
44/45	4+22.12	25.00 LF					
46	2+38.02	25.00 LF		14	0+12.84	25.00 RT	
47	EXISTING WHC TO REMAIN			15/16	1+13.61	25.00 RT	
53/54	1+38.92	25.00 LF		17/18	2+29.38	25.00 RT	
52	0+78.99	25.00 LF		31/32	1+12.92	25.00 LF	

NOTES FOR ABANDONMENT OF HOUSE CONNECTION:

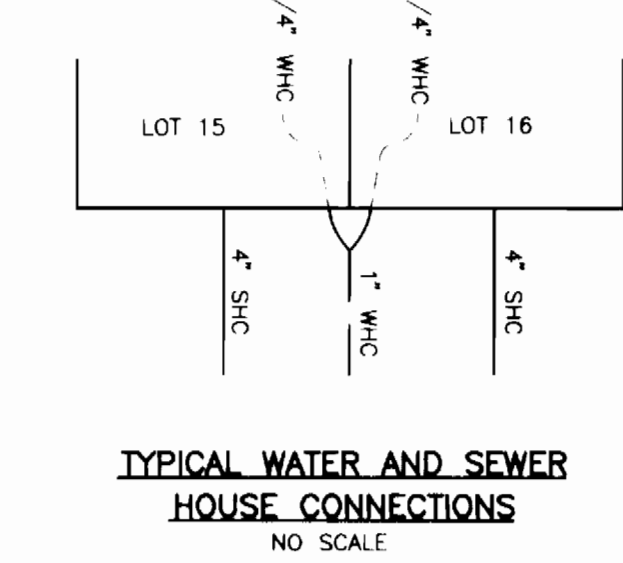
WATER HOUSE CONNECTIONS

1. WHEN ABANDONING A SINGLE WATER HOUSE CONNECTION, THE EXISTING HOUSE CONNECTION SHALL BE REMOVED TO PROPERTY LINE, DISCONNECTED AT THE WATER MAIN AND REMOVE CORPORATION STOP AND PLUG THE MAIN.

SEWER HOUSE CONNECTIONS

1. WHEN ABANDONING A SINGLE SEWER HOUSE CONNECTION, THE EXISTING HOUSE CONNECTION SHALL BE REMOVED TO THE PROPERTY LINE, DISCONNECTED AT THE SEWER MAIN AND PLUG THE SEWER MAIN AT THE WYE.

2. EXISTING SHC FOR LOT 1 PRESENTLY SERVES 6405 WATERLOO ROAD EXISTING SHC FOR LOT 11 PRESENTLY SERVES 6409 WATERLOO ROAD EXISTING SHC FOR LOT 12 PRESENTLY SERVES 6417 WATERLOO ROAD



SEWER MANHOLE LOCATION DATA			
NO.	LOCATION	OFFSET	
1	N 555659.9154 E 1371604.4950	-----	
2	N 556058.5308 E 1371543.7227	-----	
3	N 556205.3522 E 1371480.1343	-----	
4	CL STA. 3+78 SOMERVILLE LANE	18' RT.	
5	CL STA. 2+14 SOMERVILLE LANE	7' RT.	
6	CL STA. 0+94.5 SOMERVILLE LANE	7' RT.	
7	N 556505.2255 E 1371577.6563	-----	
8	CL STA. 5+14 SOMERVILLE LANE	8' RT.	
9	N 555992.1457 E 1371238.0801	-----	
10	CL STA. 1+47.5 CORNERSTONE WAY-S	18' LT.	
11	CL STA. 0+07 CORNERSTONE WAY-S	7' LT.	
12	CL STA. 0+17 CORNERSTONE WAY-N	7' RT.	
13	CL STA. 1+75.5 CORNERSTONE WAY-N	2' RT.	
14	N 556506.2666 E 1370981.9404	-----	
15	N 556539.5081 E 1370934.3734	-----	
16	N 556173.1494 E 1370968.5185	-----	
17	CL STA. 9+48.5 GREEN TREE DRIVE	10' LT.	
18	CL STA. 6+71 GREEN TREE DRIVE	7' LT.	
19	N 555859.6738 E 1371194.0041	-----	

- NOTES:**
- ALL SEWER CONNECTIONS SHALL BE 4 INCHES.
 - ALL WATER MAINS SHALL BE D.I.P. CLASS 52
 - SINGLE WATER HOUSE CONNECTIONS SHALL BE 3/4" DOUBLE WATER HOUSE CONNECTIONS SHALL BE 1".
 - THE MINIMUM COVER ON WATER MAIN SHALL BE 3.5'.
 - LOCATION OF THE EXISTING WATER AND SEWER CONNECTIONS ARE APPROXIMATE, TO BE FIELD VERIFIED BY CONTRACTOR PRIOR TO CONSTRUCTION.

DEPARTMENT OF PUBLIC WORKS
HOWARD COUNTY, MARYLAND

5-22-97
DATE

DEPARTMENT OF PLANNING AND ZONING
HOWARD COUNTY, MARYLAND

4/3/97
DATE

TSA GROUP, INC.
planning • architecture • engineering • surveying
8480 Baltimore National Pike Suite 418
Ellicott City, Maryland 21043



DES:	GWF	1/3	REVISE R/W FRONTAGE DIST ON LOTS 3, 4, 1222, 26, 31, 35, 41, 43-46, 53, 54	6/24/97
DRN:				
CHK:	GWF			
DATE:	4-4-97			
	5-19-97	BY NO.		

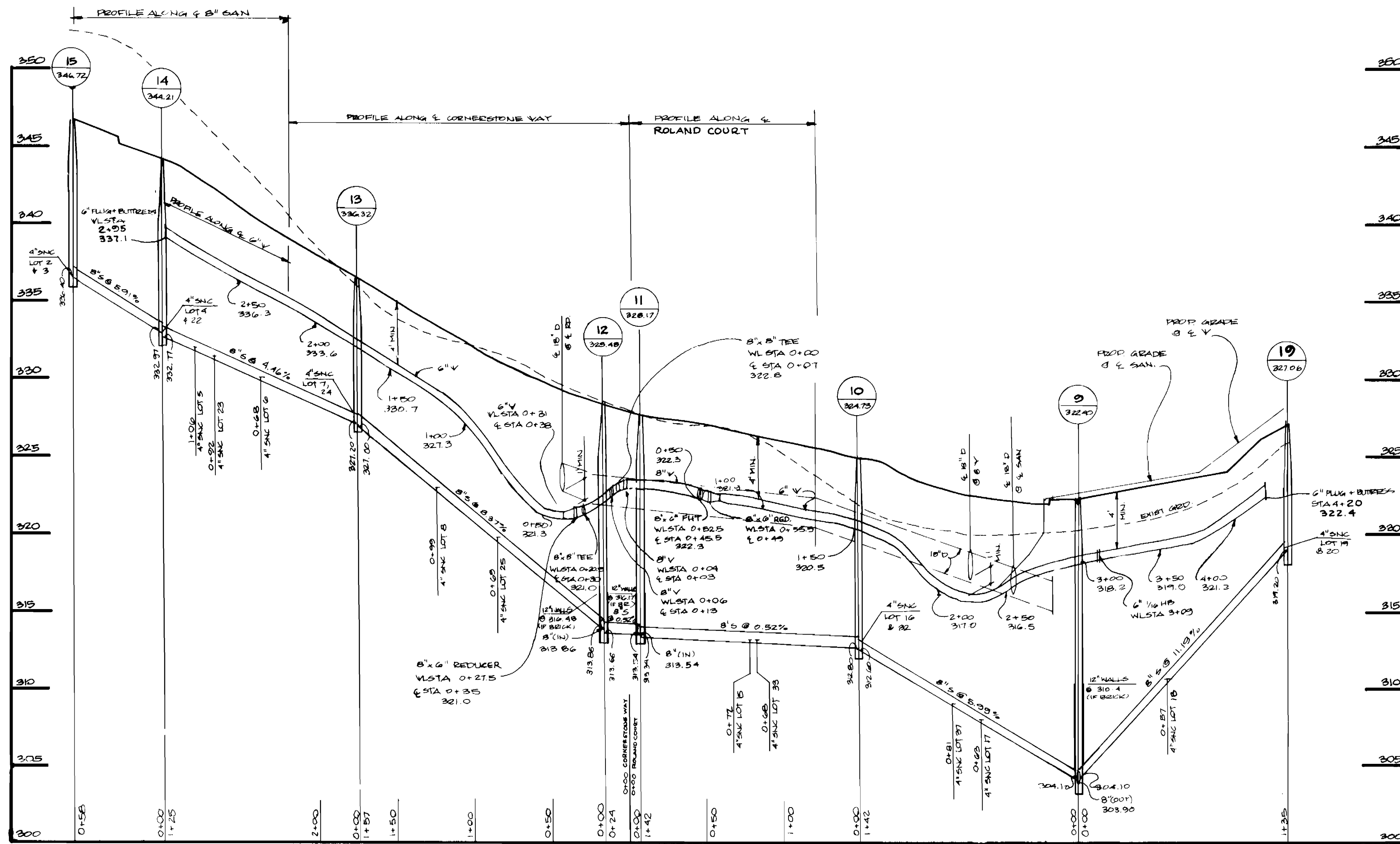
PLAN OF
WATER & SEWER MAINS

600 SCALE MAP NO. 37
BLOCK 14 & 20

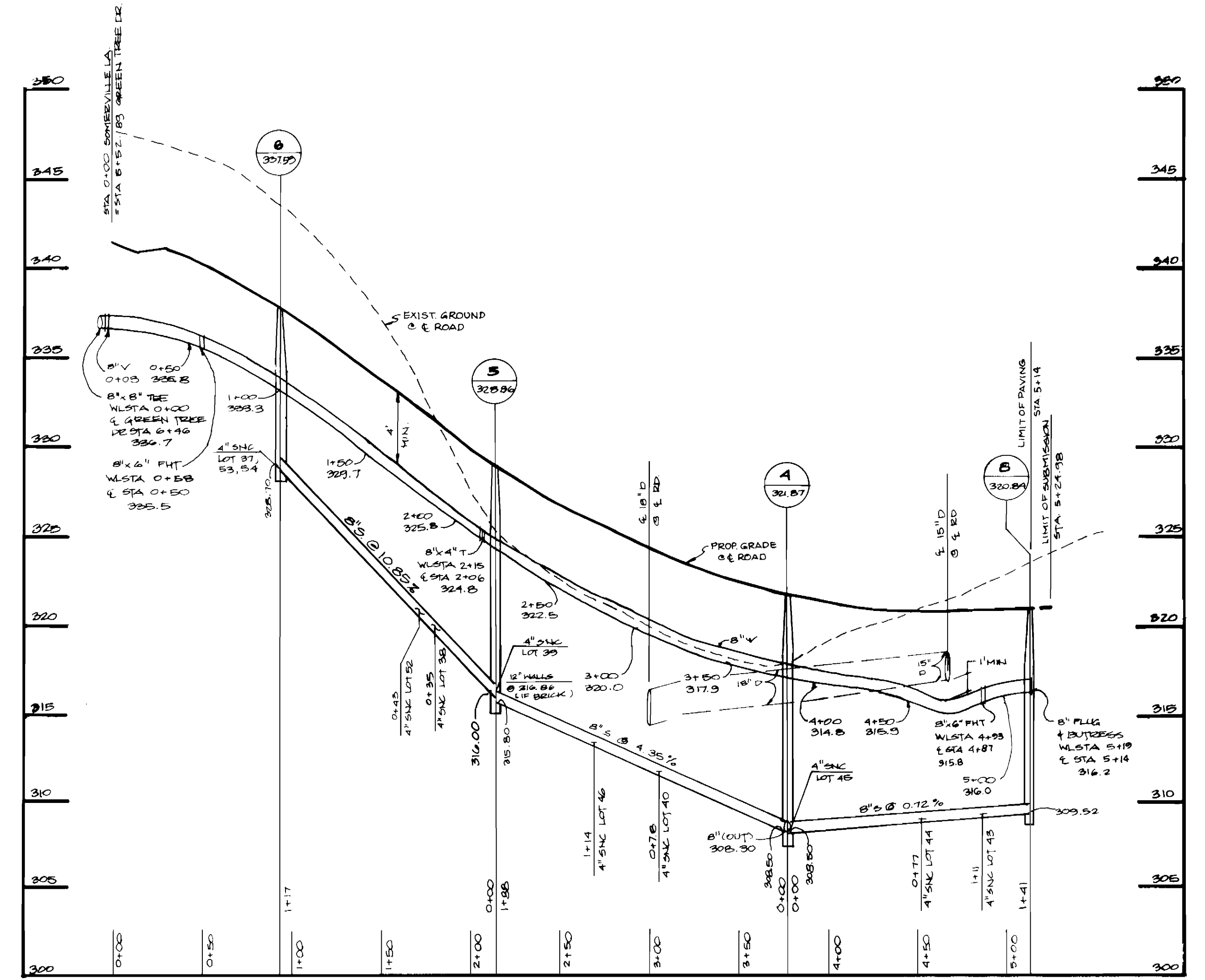
ARBOR WOODS
LOTS 1 THRU 59
1st ELECTION DISTRICT

CONTRACT NO. 14-3588-D

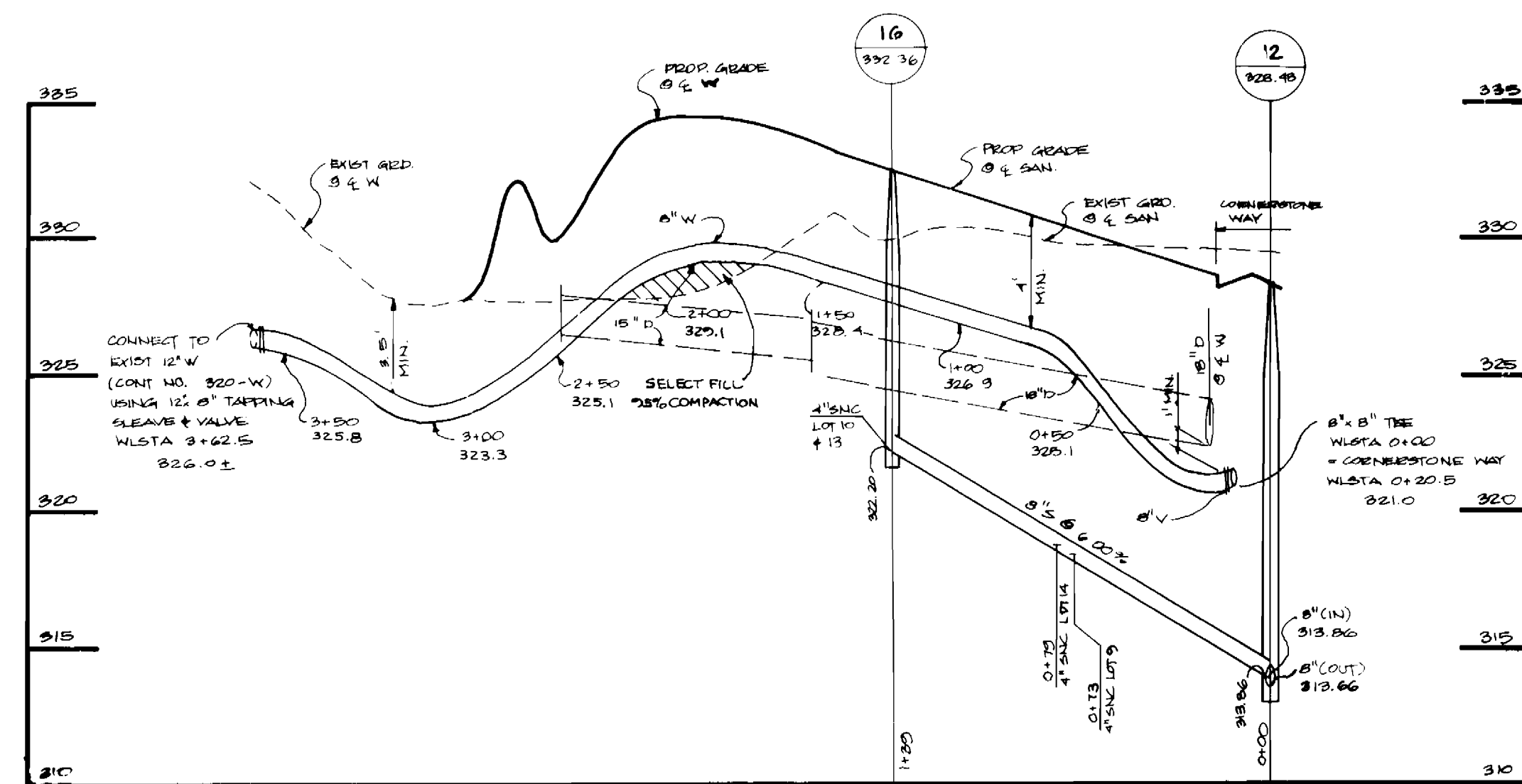
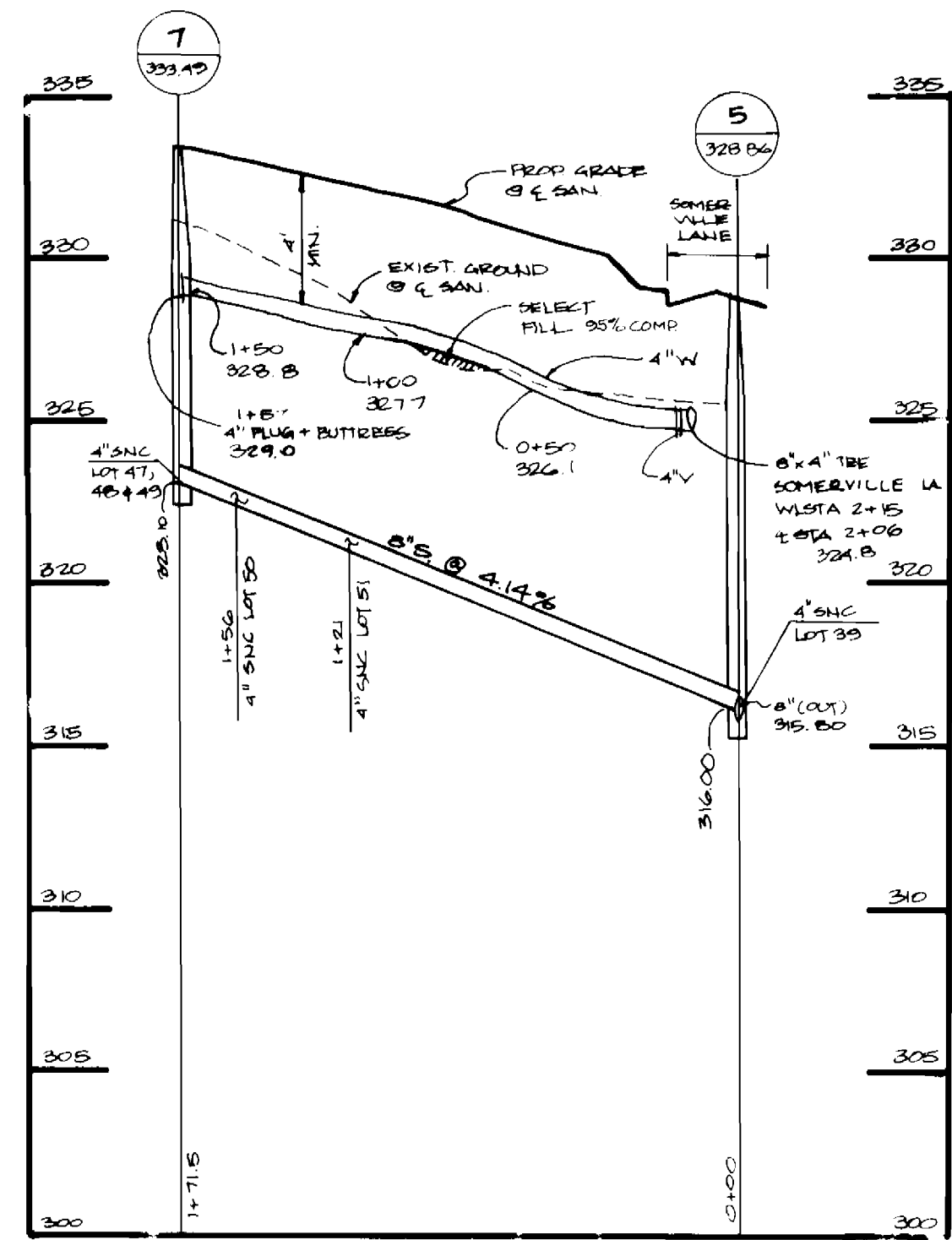
SCALE AS SHOWN
SHEET 2 OF 4

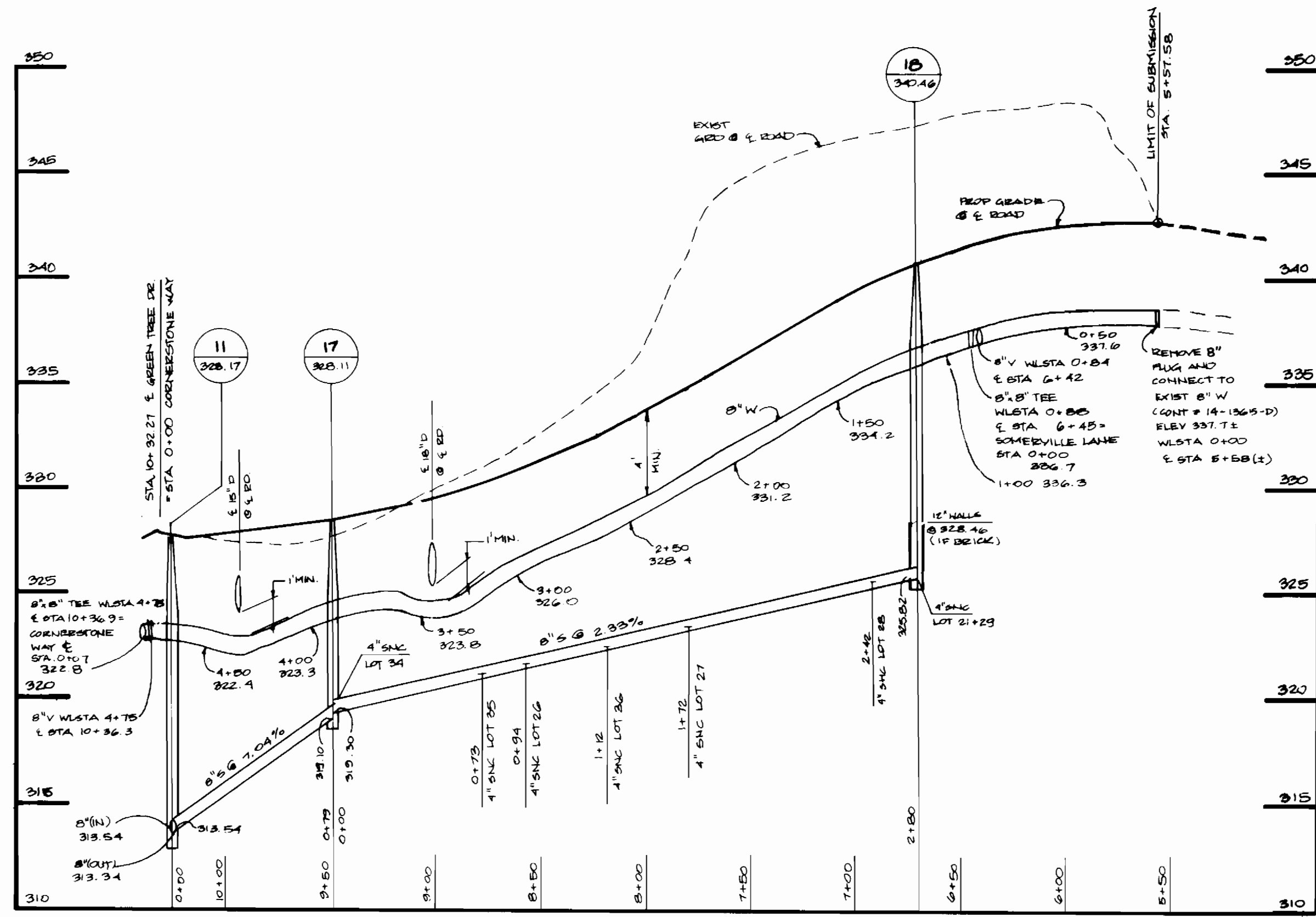


CORNERSTONE WAY / ROLAND COURT

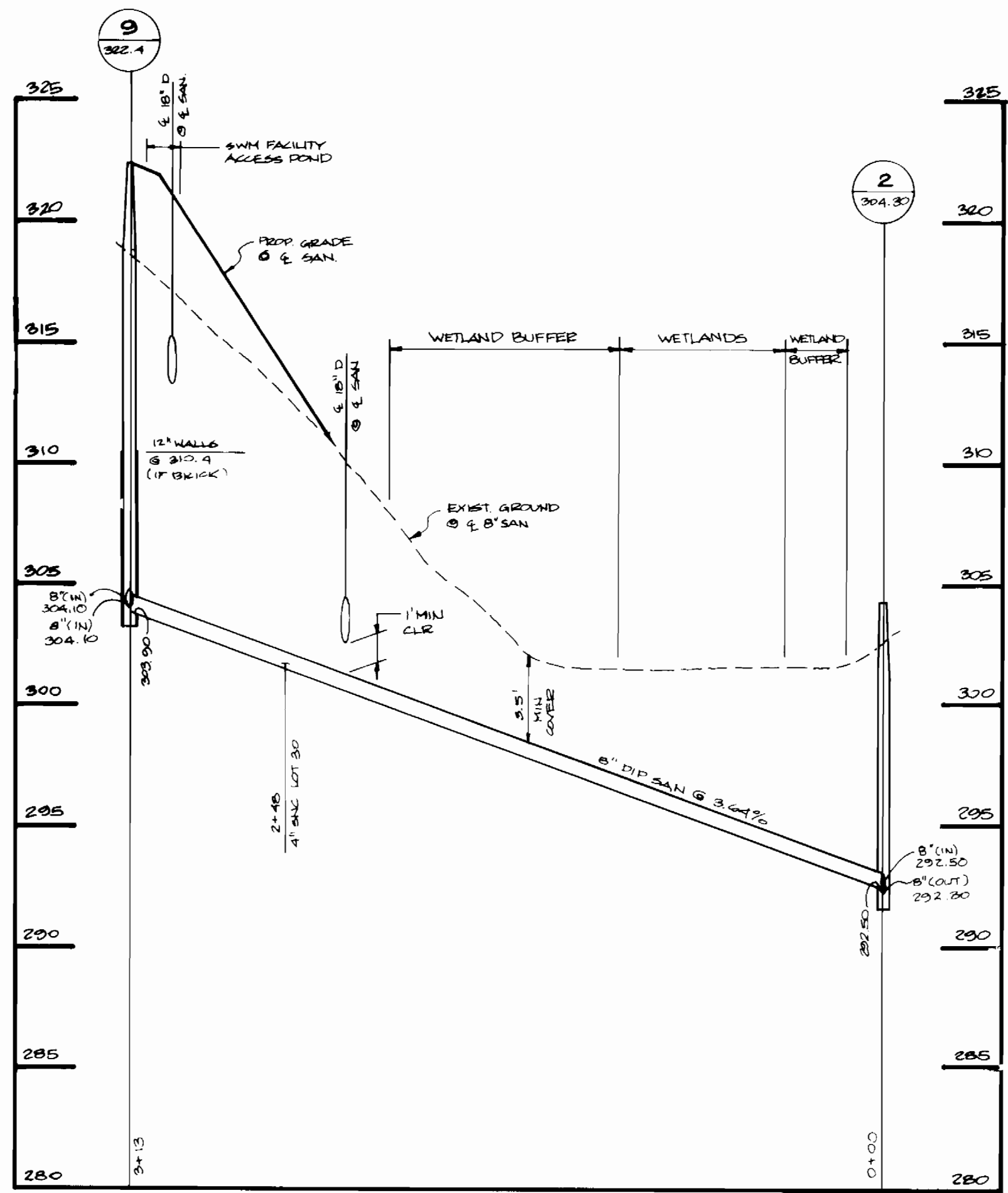
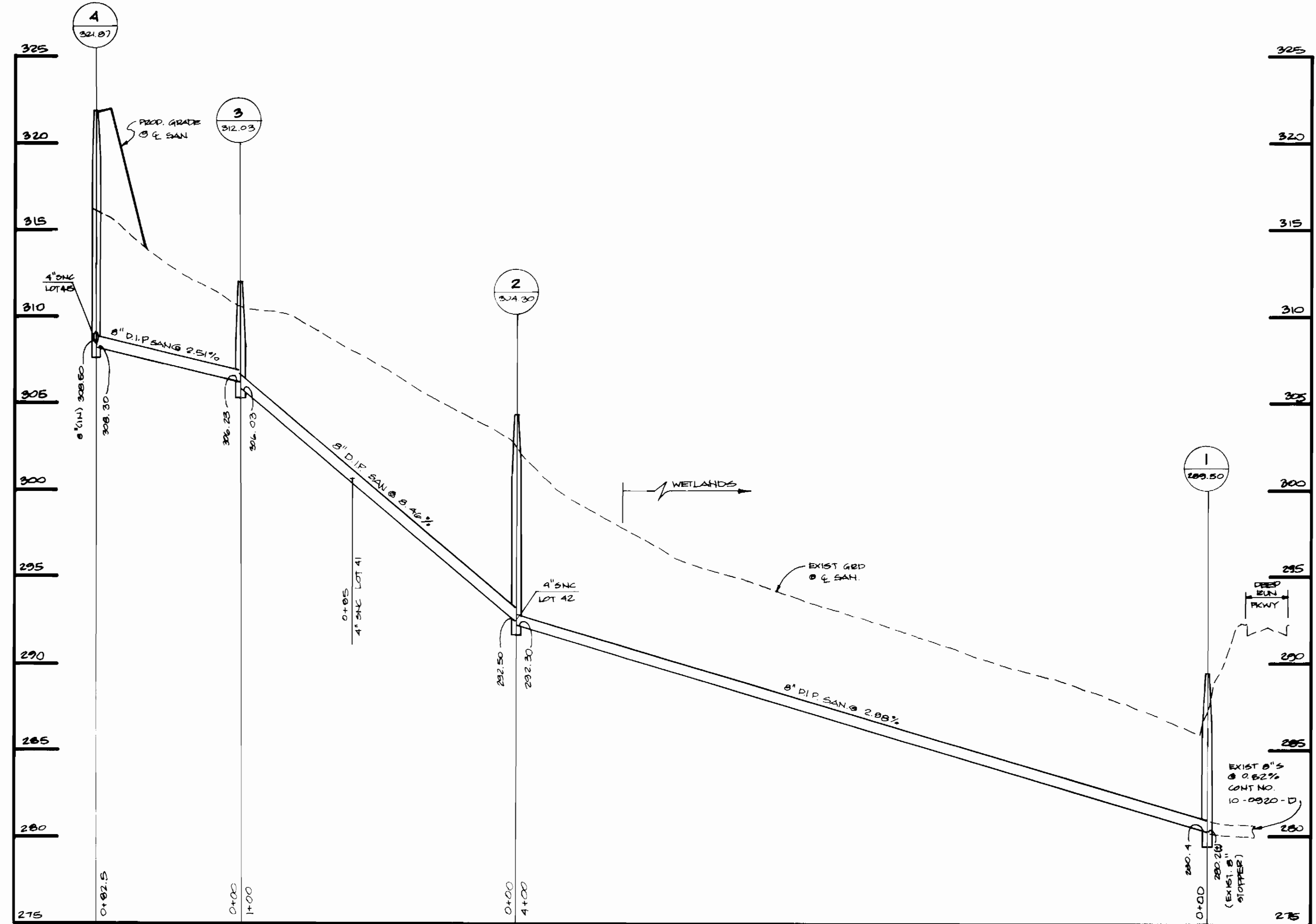


SOMERVILLE LANE





GREEN TREE DRIVE



SEWER AS-BUILT

FROM:	TO:	DIST.	FROM:	TO:	DIST.	FROM:	TO:	DIST.
MH 18	50	44'	MH 15	5	54'	MH 1	20	17'
MH 18	50	51'	MH 15	5	21'	MH 1	51	34'
MH 18	50	51'	MH 15	5	17'	MH 1	51	37'
F.H.	50	80'	MH 15	5	71'	MH 1	50	37'
F.H.	50	74'	MH 15	5	103'	MH 1	50	34'
MH 17	50	17'	MH 15	5	120'	MH 1	50	34'
MH 17	50	76'	MH 15	5	74'	MH 1	50	34'
MH 17	50	83'	MH 15	5	97'	MH 1	50	34'
MH 17	50	95'	MH 15	5	143'	MH 1	50	34'
MH 17	50	113'	MH 15	5	25'	MH 1	50	34'
MH 17	50	173'	MH 15	5	12'	MH 1	50	34'
S.D. I	50	64'	MH 15	5	66'	MH 1	50	34'
S.D. I	50	70'	MH 15	5	72'	MH 1	50	34'
S.D. I	50	38'	MH 15	5	128'	MH 1	50	34'
S.D. I	50	27'	MH 15	5	151'	MH 1	50	34'
MH 12	50	73'	MH 15	5	32'	MH 1	50	34'
MH 12	50	106'	MH 15	5	94'	MH 1	50	34'
MH 13	50	184'	MH 15	5	74'	MH 1	50	34'
MH 13	50	155'	MH 15	5	145'	MH 1	50	34'
MH 13	50	84'	MH 15	5	137'	MH 1	50	34'
MH 13	50	36'	MH 15	5	18'	MH 1	50	34'
MH 13	50	82'	MH 15	5	35'	MH 1	50	34'
MH 14	50	48'	MH 15	5	78'	MH 1	50	34'
MH 14	50	56'	MH 15	5	72'	MH 1	50	34'
MH 14	50	48'	MH 15	5	75'	MH 1	50	34'
MH 14	50	61'	MH 15	5	33'	MH 1	50	34'
MH 14	50	79'	MH 15	5	157'	MH 1	50	34'
MH 14	50	47'	MH 15	5	62'	MH 1	50	34'
MH 14	50	68'	MH 15	5	79'	MH 1	50	34'
MH 14	50	119'	MH 15	5	153'	MH 1	50	34'
MH 14	50	119'	MH 15	5	157'	MH 1	50	34'

WATER AS-BUILT

FROM:	TO:	DIST.	FROM:	TO:	DIST.	FROM:	TO:	DIST.
MH 1	1	22'	MH 1	1	39'	MH 1	1	75'
MH 1	1	20'	MH 1	1	13'	MH 1	1	75'
MH 1	1	48'	MH 1	1	12'	MH 1	1	77'
MH 1	1	53'	MH 1	1	34'	MH 1	1	77'
MH 1	1	23'	MH 1	1	46'	MH 1	1	54'
MH 1	1	114'	MH 1	1	107'	MH 1	1	63'
MH 1	1	64'	MH 1	1	112'	MH 1	1	66'
MH 1	1	69'	MH 1	1	23'	MH 1	1	26'
MH 1	1	60'	MH 1	1	80'	MH 1	1	29'
MH 1	1	43'	MH 1	1	85'	MH 1	1	30'
MH 1	1	44'	MH 1	1	80'	MH 1	1	35'
MH 1	1	33'	MH 1	1	85'	MH 1	1	36'
MH 1	1	78'	MH 1	1	34'	MH 1	1	43'
MH 1	1	18'	MH 1	1	42'	MH 1	1	43'
MH 1	1	48'	MH 1	1	30'	MH 1	1	53'
MH 1	1	51'	MH 1	1	35'	MH 1	1	52'
MH 1	1	102'	MH 1	1	110'	MH 1	1	57'
MH 1	1	48'	MH 1	1	107'	MH 1	1	113'
MH 1	1	102'	MH 1	1	18'	MH 1	1	18'
MH 1	1	48'	MH 1	1	64'	MH 1	1	38'
MH 1	1	74'	MH 1	1	63'	MH 1	1	88'
MH 1	1	81'	MH 1	1	114'	MH 1	1	84'
MH 1	1	82'	MH 1	1	119'	MH 1	1	99'
MH 1	1	80'	MH 1	1	130'	MH 1	1	58'
MH 1	1	157'	MH 1	1	19'	MH 1	1	31'
MH 1	1	88'	MH 1	1	26'	MH 1	1	80'
MH 1	1	93'	MH 1	1	16'	MH 1	1	28'
MH 1	1	105'	MH 1	1	64'	MH 1	1	67'
MH 1	1	14'	MH 1	1	33'	MH 1	1	41'
MH 1	1	23'	MH 1	1	16'	MH 1	1	40'
MH 1	1	15'	MH 1	1	33'	MH 1	1	46'
MH 1	1	17'	MH 1	1	103'	MH 1	1	87'
MH 1	1	107'	MH 1	1	45'	MH 1	1	45'
MH 1	1	143'	MH 1	1	44'	MH 1	1	41'
MH 1	1	148'	MH 1	1	42'	MH 1	1	77'
MH 1	1	158'	MH 1	1	43'	MH 1	1	43'
MH 1	1	45'	MH 1	1	45'	MH 1	1	14'
MH 1	1	15'	MH 1	1	43'	MH 1	1	14'
MH 1	1	46'	MH 1	1	46'	MH 1	1	14'
MH 1	1	11'	MH 1	1	35'	MH 1	1	14'
MH 1	1	18'	MH 1	1	44'	MH 1	1	14'
MH 1	1	21'	MH 1	1	44'	MH 1	1	14'
MH 1	1	28'	MH 1	1	44'	MH 1	1	14'
MH 1	1	48'	MH 1	1	48'	MH 1	1	14'
MH 1	1	25'	MH 1	1	25'	MH 1	1	14'

DEPARTMENT OF PUBLIC WORKS
HOWARD COUNTY, MARYLAND

DEPARTMENT OF PLANNING AND ZONING
HOWARD COUNTY, MARYLAND

TSA GROUP, INC.

planning • architecture • engineering • surveying
8480 Baltimore National Pike Suite 418
Elicott City, Maryland 21043

Ronald Mason

DES: GWF

DRN: GWF

CHK: GWF

DATE: 1-8-97

DATE: 5-19-97

PROFILES OF
WATER & SEWER MAINS

ARBOR WOODS

LOTS 1 THRU 59

1st ELECTION DISTRICT

CONTRACT NO. 14-3588-D

SCALE

HORIZ. 1" = 50'

VERT. 1" = 5'

SHEET

4 OF 4

Robert J. ...
CHIEF, BUREAU OF UTILITIES

...
CHIEF, DEVELOPMENT ENGINEERING DIVISION

REVISIONS

DATE: 600 SCALE MAP NO. 37

BLOCK 14 & 20