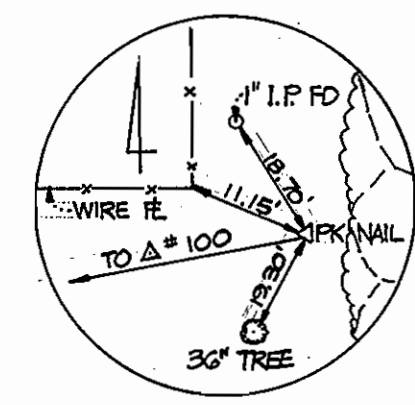
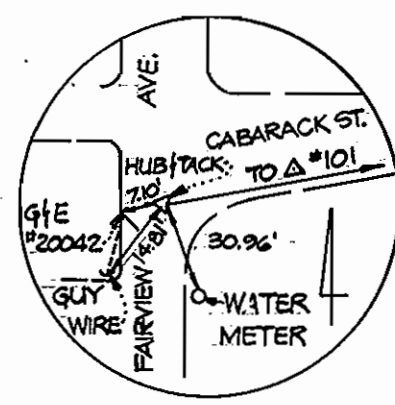


AS-BUILT 12/15/96

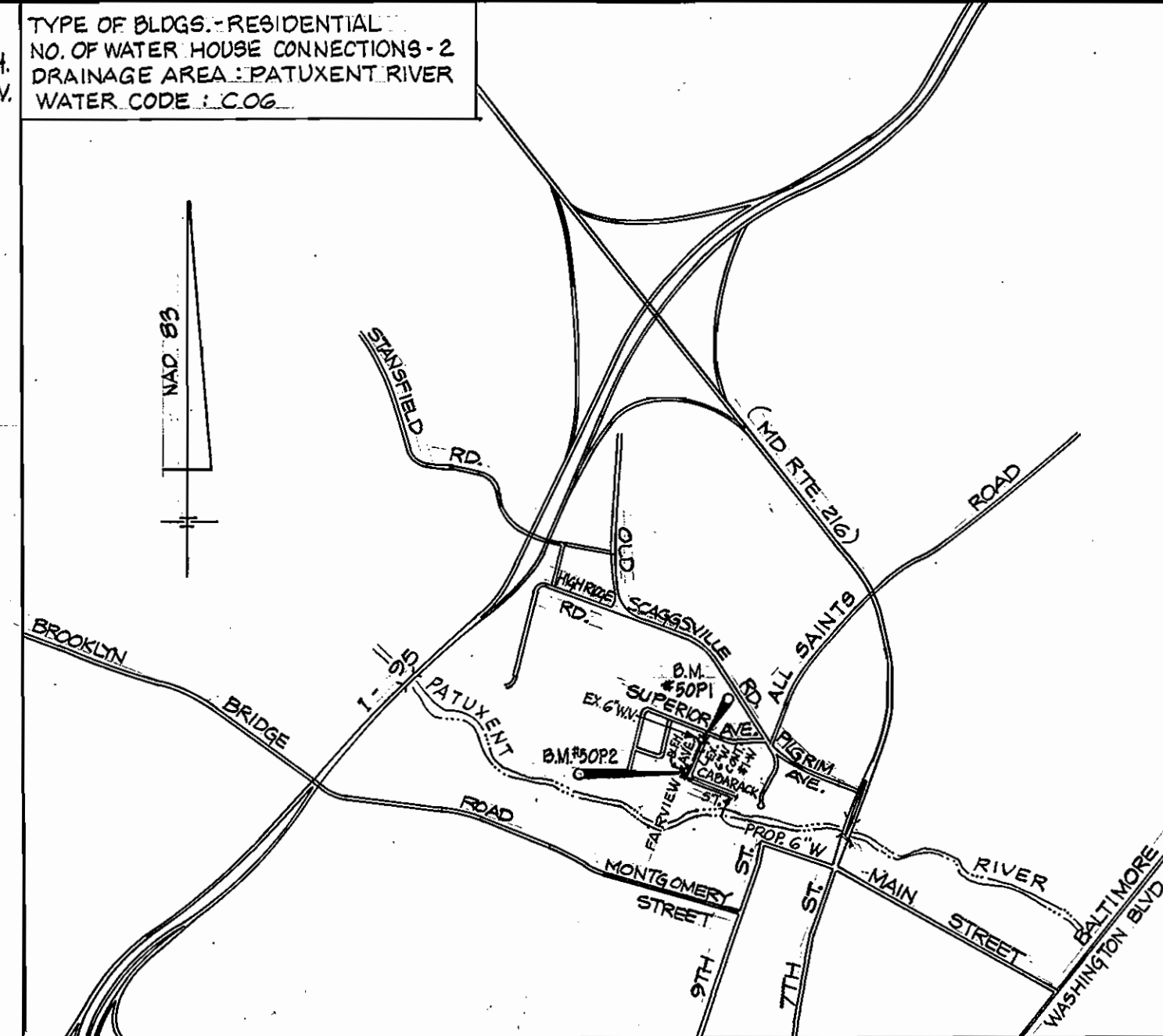


TRAVERSE POINT
H.E.C. #100
ELEV. 237.64
N 52.6368.38
E 1351.81107

TRAVERSE POINT
H.E.C. #101
ELEV. 227.27
N 52.6331.22
E 1351.999.56

BENCH MARK - HOWARD CO. B.M. NO. 50P1
PK NAIL SET ON SUPERIOR AVE 2.6' S. OF
W.V. 15.1' S.E. OF G.TE POLE #175808 AND
28.3' N.E. OF W.V. IN FAIRVIEW AVE
ELEV. 243.99
N 527,035.98
E 1,352,084.50

BENCH MARK - HOWARD CO. B.M. NO. 50P2
PK NAIL SET ON FAIRVIEW AVE 52.4' SE. OF F.H.
4.8' E. OF W.M. NEAR MAC. DR. @ #9422.50.6' NW
OF SAN. MH. @ BEGINNING OF CABARACK ST.
ELEV. 239.96
N 526,412.52
E 1,351,820.00

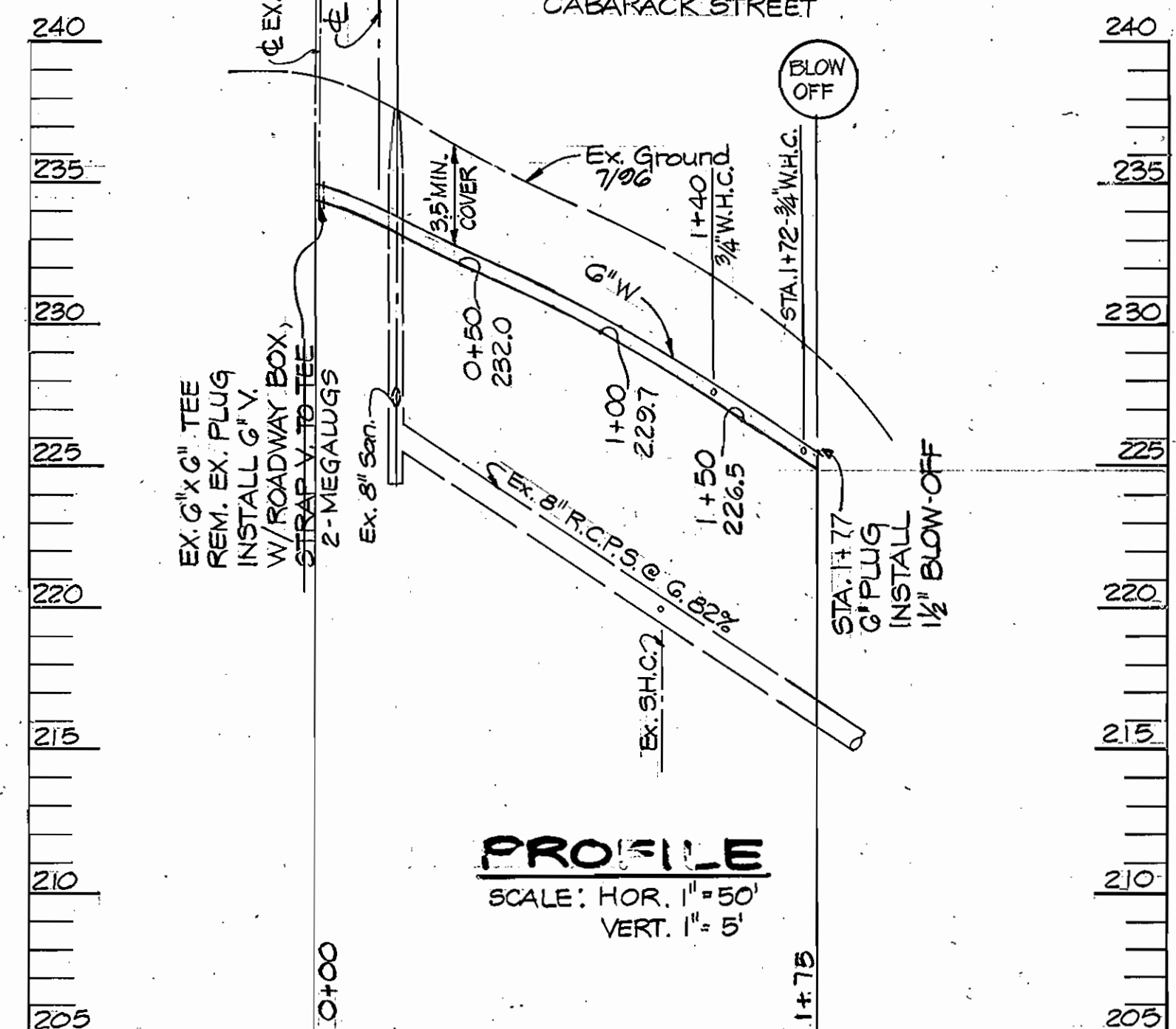
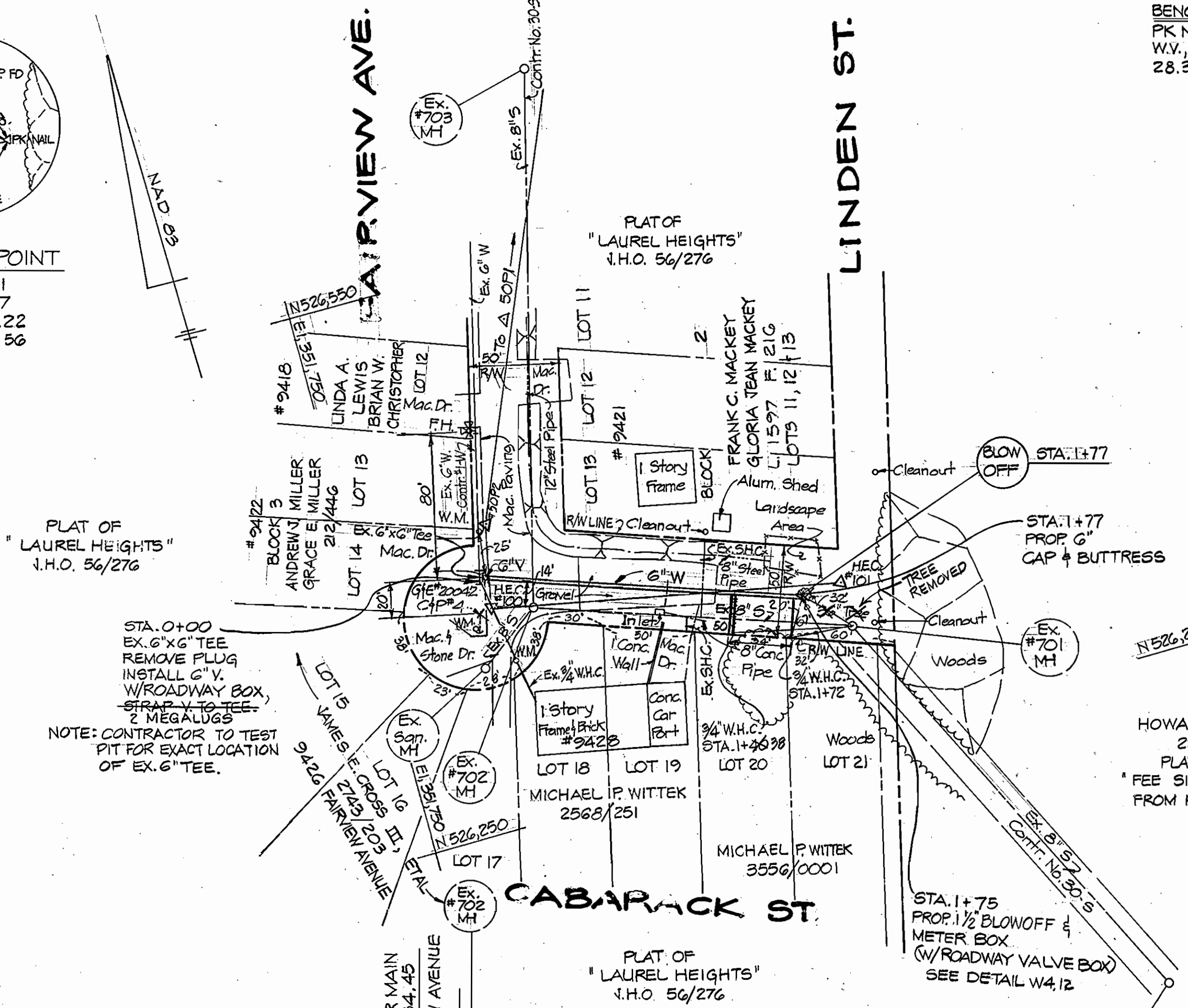


| ITEMS | QUANTITIES ESTIMATED | AS-BUILT | | |
|-------------------|----------------------|------------|--------------------|--------------------------|
| | | QUANTITIES | TYPE | MANUFACTURER/SUPPLIER |
| 6" WATER MAIN | 177 L.F. | 177 L.F. | D.I.P. CL. 52 | ATLANTIC STATES/WATERPRO |
| 3/4" W.H.C. | 44 L.F. | 42 L.F. | K-COPPER | CAMBRIDGE LEE/WATERPRO |
| 6" VALVE | 1 EA. | 1 EA. | ROGV | MUELLER/WATERPRO |
| BLOW-OFF (1 1/2") | 1 EA. | 1 EA. | COPPER/BRASS VALVE | WATERPRO |

CONTRACTOR: W.F. WILSON & SONS

| LOCATION | LENGTH | TYPE |
|------------------------|---------|--------------|
| STA. 0+00 TO STA. 0+55 | 55 L.F. | MAC. |
| STA. 0+55 TO STA. 1+80 | 75 L.F. | GRAVEL |
| STA. 1+30 TO STA. 1+77 | 47 L.F. | SEED & MULCH |

| MAIN FITTING | DISTANCE | OFFSET |
|------------------------|---|-----------|
| EX. 6" TEE - STA. 0+00 | H.E.C. #100 TO H.O. CO. # 50P2 - 17.00' | 5.00' LT. |
| BLOW-OFF - STA. 1+75 | H.E.C. #100 TO H.E.C. #101 167.5' | 6.00' RT. |



GENERAL NOTES

- PART I**
- Approximate location of existing mains are shown. The Contractor shall take all necessary precautions to protect existing mains and services and maintain uninterrupted service. Any damage incurred shall be repaired immediately to the satisfaction of the Engineer at the Contractor's expense.
 - All horizontal controls are based on Maryland State Coordinates, NAD 83.
 - All vertical controls are based on U.S.G.S. data.
 - All pipe elevations shown are invert elevations unless otherwise noted on the plans.
 - Clear all utilities by a minimum of 6'. Clear all poles by 5'-0" minimum or tunnel as required. The owner has contacted the utility companies and has made arrangements for bracing of poles as shown on the drawings. In the event the Contractor's work requires the bracing of additional poles, any cost incurred by the owner for the bracing of additional poles or damages shall be deducted from money owed the Contractor. The Contractor shall coordinate with the utility companies to schedule the bracing of the poles.
 - For details not shown on the drawings, and for materials and construction methods, use Howard County Design Manual, Volume IV, Standard Specifications and Details for Construction (Latest Edition). The Contractor shall have a copy of Volume IV on the job.
 - Where test pits have been made on existing utilities, they are noted by the symbol [X] at the location of the test pit. A note or notes containing the results of the test pit or pits is included on the drawings. Existing utilities in the vicinity of the proposed work for which test pits have not been dug shall be located by the Contractor two weeks in advance of construction operations at his own expense.
 - Contractor shall notify the following utility companies or agencies at least five working days before starting work shown on these plans:
AT&T 865-3803
B&E - Contractor Services 850-4620
B&E - Underground Damage Control 787-9868
Bureau of Utilities (BPU) 795-1390
Bell Atlantic - Md., Inc. 597-8585
Colonial Pipeline Co. 1-800-257-7777
Mass Utility 531-5533
State Highway Administration 313-2450
 - Trees and shrubs are to be protected from damage to the maximum extent. Trees and shrubs located within the construction strip are not to be removed or damaged by the Contractor.
 - Contractor shall remove trees, stumps and roots along line of excavation. Payment for such removal shall be included in the unit price bid for construction of the main.
 - The Contractor shall notify the Bureau of Highways, Howard County, at (410) 313-2450 at least five working days before any open cut of any County road or freestress installation operation in county roads for laying water/sewer mains or house connections. The approval of these drawings will constitute compliance with DPW requirements per Section 18114(a) of the Howard County Code.
- PART II - WATER**
- All water mains shall be D.I.P. Class 52 unless otherwise noted.
 - Tops of all water mains shall have a minimum of 3'-6" of cover unless otherwise noted.
 - Valves adjacent to tees shall be strapped to tees.
 - All fittings shall be buttressed or anchored with concrete in accordance with the Standard Details unless otherwise provided on the drawings.
 - Fire hydrants shall be set to the bury line elevations shown on the drawings. All fire hydrants shall be installed in accordance with Standard Details. Soil around the fire hydrant shall be compacted in accordance with Section 1000 and Section 1005 of the Standard Specifications.
 - The Contractor shall not operate any water main valves on the existing water system.

DEPARTMENT OF PUBLIC WORKS
HOWARD COUNTY, MARYLAND

James P. Law 9/16/96
DIRECTOR OF PUBLIC WORKS DATE

Robert S. Brown 9-11-96
CHIEF, BUREAU OF UTILITIES DATE

Paul P. Brown 9/16/96
CHIEF, BUREAU OF ENGINEERING DATE

Thomas J. Butler 9/6/96
CHIEF, WATER & SEWER DESIGN DATE

HICKS ENGINEERING CO. INC.
ENGINEERS - SURVEYORS - PLANNERS
200 E. JOPPA ROAD, SUITE 402
TOWSON, MARYLAND 21286

[Signature]
REGISTERED PROFESSIONAL ENGINEER

| | | | | |
|-------------|----|-----|----------|------|
| DES: D.E.H. | | | | |
| DRN: R.W. | | | | |
| CHK: D.E.H. | | | | |
| DATE: 9/96 | BY | NO. | REVISION | DATE |

PLAN, PROFILE & DETAILS

600' SCALE MAP NO. W 501850 BLOCK NO. 2

CABARACK STREET - WATER MAIN
6TH ELECTION DISTRICT
HOWARD COUNTY, MARYLAND
CAPITAL PROJECT W-8198
CONTRACT NO. 44-3570

SCALE AS SHOWN
SHEET 1 OF 1