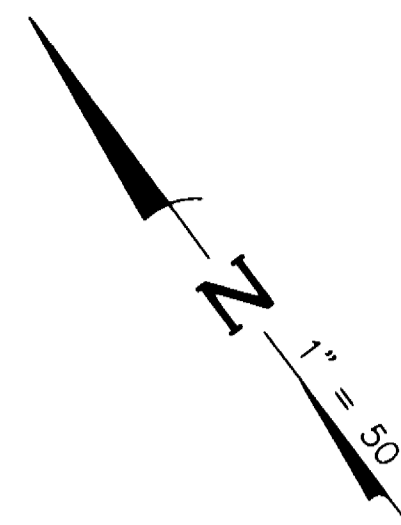


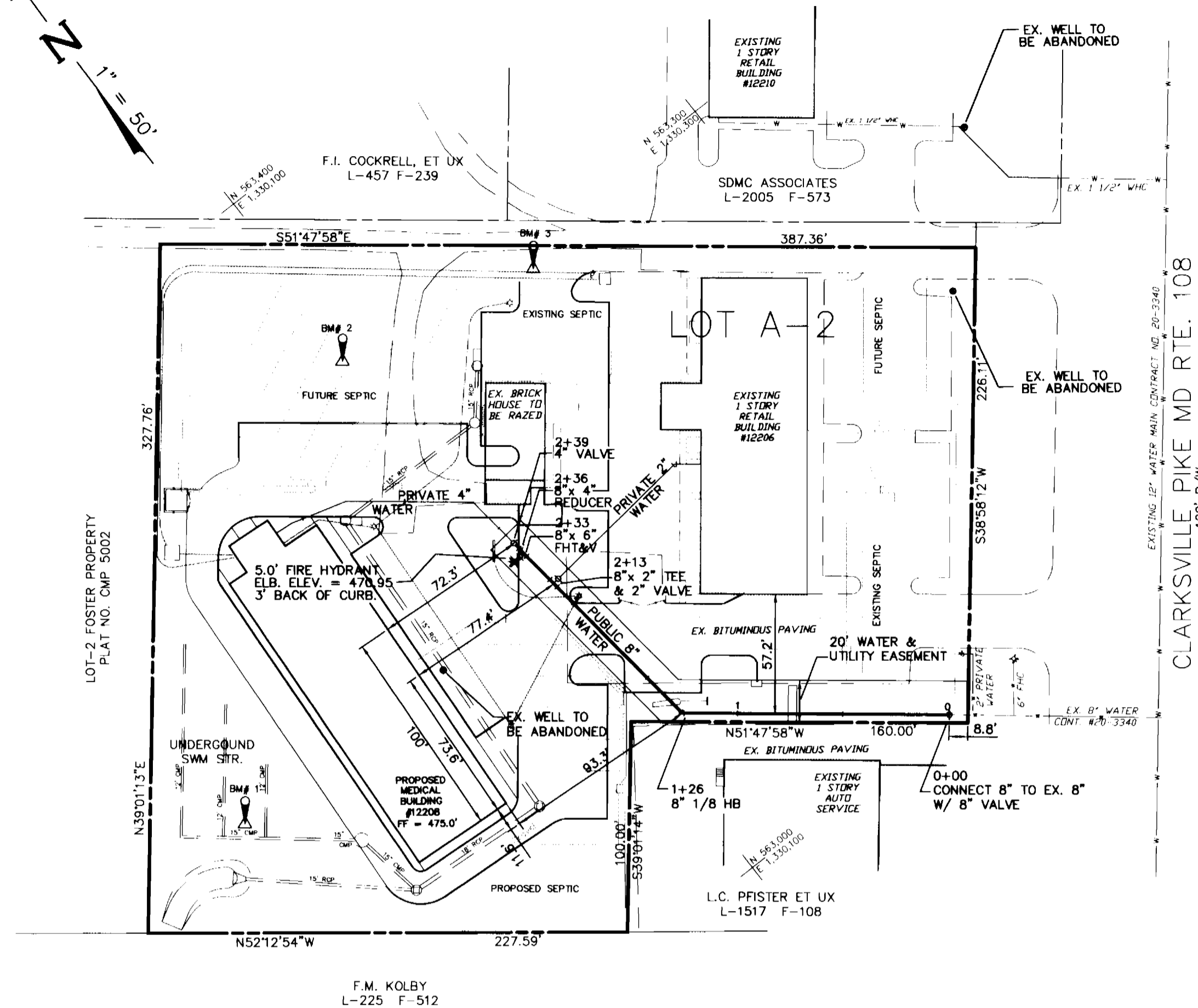
GENERAL NOTES

- Approximate location of existing mains are shown. The contractor shall take all necessary precautions to protect existing mains and services and maintain uninterrupted supply. Any damage incurred shall be repaired immediately to the satisfaction of the Engineer at the Contractor's expense.
- All horizontal controls are based on Maryland State Coordinates. (North American Datum of 1983 [NAD'83]).
- All vertical controls are based on U.S.G.S. data.
- All pipe elevations shown are invert elevations.
- Clear all utilities by a minimum of 6". Clear all poles by 2'-0" minimum or tunnel as required. The owner has contacted the utility companies and has made arrangements for bracing of poles as shown on the drawings. In the event the contractor's work requires the bracing of additional poles, any cost incurred by the owner for bracing of additional poles or damages shall be deducted from money owed the contractor. The contractor shall coordinate with the utility companies to schedule the bracing of the poles.
- For details not shown on the drawings, and for materials and construction methods use Howard County Design Manual, Volume IV, Standard Specifications and Detail for Construction (Latest Edition). The contractor shall have a copy of Volume IV on the job.
- Where test pits have been made on existing utilities, they are noted by the symbol at the location of the test pit. A note or notes containing the results of the test pit or pits is included on the drawings. Existing utilities in the vicinity of the proposed work for which test pits have not been dug shall be located by the contractor two weeks in advance of construction operations at his own expense.
- Contractor shall notify the following utility companies or agencies at least five (5) working days before starting work shown on these plans:

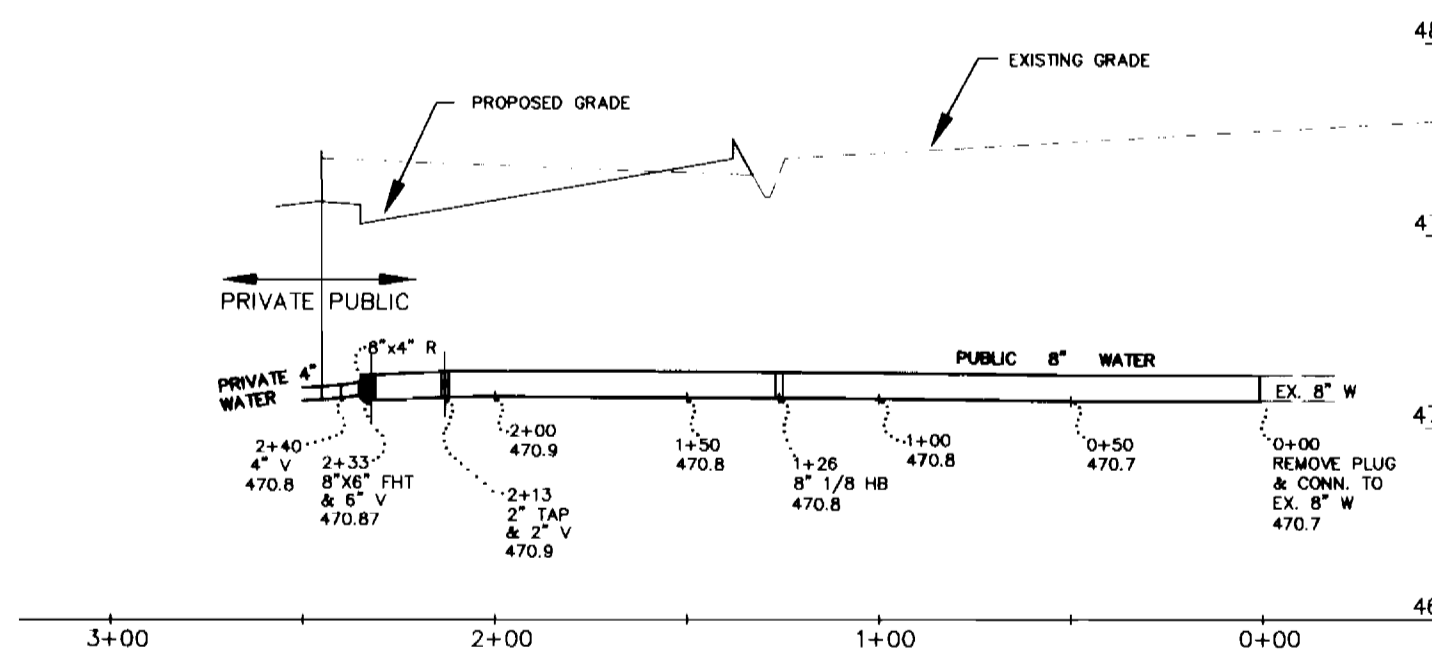
State Highway Administration	410-531-5533
BGE Contractor Services	410-850-4620
BGE Underground Damage Control	410-787-9068
Miss Utility	1-800-257-7777
Colonial Pipeline Co.	410-795-1390
Howard County Department of Public Works Bureau of Utilities	410-313-4900
- Trees and shrubs are to be protected from damage to maximum extent. Trees and shrubs located within the construction strip are not to be removed or damaged by the contractor.
- Contractor shall remove trees, stumps and roots along line of excavation. Payment for such removal shall be included in the unit price bid for construction of the main.
- General Notes (see attached).
- The contractor shall notify the Bureau of Highways, Howard County, at 410-313-2450 at least five (5) working days before any open cut of any County road or boring/jacking operation in County roads for laying water/sewer mains or house connections. The approval of these drawings will constitute compliance with DPW requirements per Section 18.114(a) of the Howard County Code.
- All water mains to be D.I.P. Class 52 unless otherwise noted.
- Tops of all water mains to have a minimum of 3'-1/2' cover unless otherwise noted.
- Valves adjacent to tees shall be strapped to tees.
- All fittings shall be buttressed or anchored with concrete in accordance with the Standard Details unless otherwise provided for on the drawings.
- Fire hydrants shall be set to the bury line elevations shown on the drawings. All fire hydrants shall be restrained and buttressed with concrete in accordance with the Standard Details. Soil around the fire hydrant shall be compacted in accordance with Section 1000 and 1005 of the Standard Specifications.
- The contractor shall not operate any water main valves on the existing water system.
- All water house connections shall be for inside meter setting unless otherwise noted on plans or in specifications.



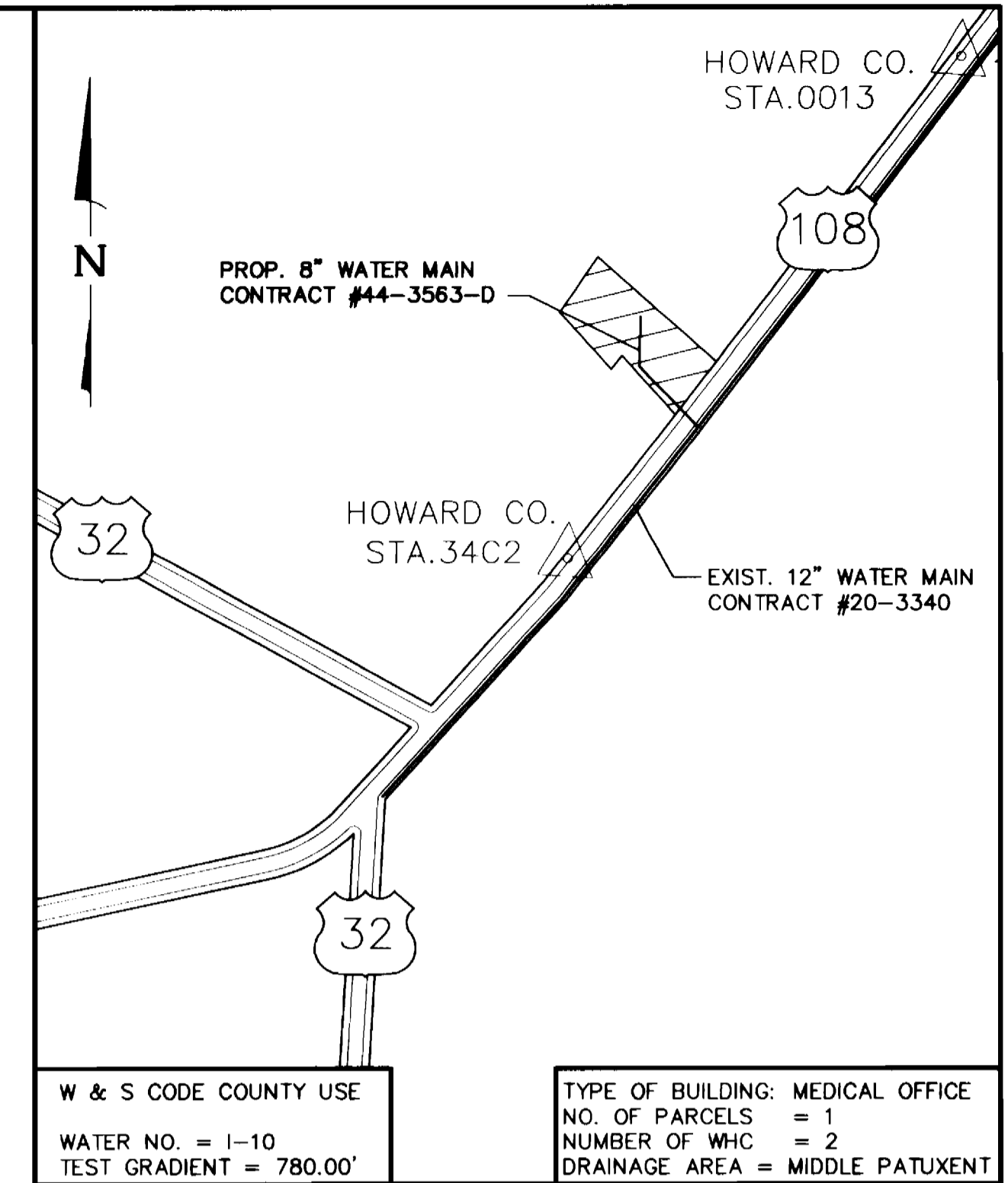
- BENCH MARKS**
- #1 RE-BAR & CAP ELEV. = 472.08'
 - #2 RE-BAR & CAP ELEV. = 473.29'
 - #3 RE-BAR & CAP ELEV. = 475.10'



PLAN VIEW
1" = 50'



PROFILE
HORZ. = 1" = 50'
VERT. = 1" = 5'



VICINITY MAP
SCALE = 1" = 600'

MATERIAL	ESTIMATED QUANTITIES	AS-BUILT		
		QUANTITIES	TYPE	SUPPLIER
4" WATER	10 L.F.			
8" WATER	235 L.F.			
FIRE HYDRANTS	1 EACH			
2" VALVES	1 EACH			
4" VALVE	2 EACH			
6" VALVE	1 EACH			
8" X 4" REDUCER	1 EACH			
8" X 2" TEE	1 EACH			
NAME OF UTILITY CONTRACTOR				
		CHECK BOX		
		AS-BUILT DATE		
		SURVEY AND DRAFTING DIVISION		

SEDIMENT CONTROL MEASURES FOR THIS CONTRACT WILL BE IMPLEMENTED IN ACCORDANCE WITH SECTION 219 OF THE SPECIFICATIONS AND AS SHOWN ON SDP-96-76

REVIEW FOR HOWARD SOIL CONSERVATION DISTRICT AND MEETS TECHNICAL REQUIREMENTS.

J. B. Warfield 9/11/96
NATURAL RESOURCES COMMISSION SERVICE DATE

THIS PLAN IS APPROVED FOR SOIL EROSION AND SEDIMENT CONTROL BY THE HOWARD SOIL CONSERVATION DISTRICT.

John R. Polentano 9/11/96
HOWARD SOIL CONSERVATION DISTRICT DATE

CALL "MISS UTILITY"
TELEPHONE 1-800-257-7777
FOR UTILITY LOCATIONS
AT LEAST 48 HOURS BEFORE
BEGINNING CONSTRUCTION

DEPARTMENT OF PUBLIC WORKS
HOWARD COUNTY, MARYLAND

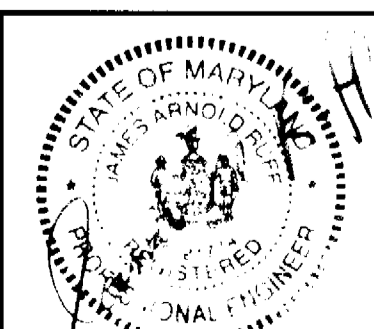
John R. Polentano 9/9/96
CHIEF, BUREAU OF UTILITIES DATE

DEPARTMENT OF PLANNING & ZONING
HOWARD COUNTY, MARYLAND

John R. Polentano 9/11/96
CHIEF, DEVELOPMENT ENGINEERING DIVISION DATE

Macris, Hendricks and Glascock, P.A.
Engineers • Planners • Surveyors

Suite 120
9220 Wightman Road
Gaithersburg, Maryland
20879
(301) 670-0840



DES: JAR/MDP				
DRN: MDP				
CHK:				
DATE: 8-29-96	BY NO.	REVISIONS	DATE	

WATER MAIN

600 SCALE MAP NO. 34

BLOCK NO. 6

FOSTER PROPERTY
LOT A-2 PLAT 11307
5TH ELECTION DISTRICT
HOWARD COUNTY, MARYLAND
CONTRACT NO. 44-3563-D

SCALE AS SHOWN

SHEET 1 OF 1