

MAJOR WATER MAIN EXTENSION TURF VALLEY PODS "D" & P/O "E"

PGCC District, Residential Subdistrict

PHASE I

2nd ELECTION DISTRICT

HOWARD COUNTY, MARYLAND

CONTRACT NO. 44-3550-D

ITEM	QUANTITIES EST'D	QUANTITIES	AS-BUILT	
			TYPE	SUPPLIER/MANUFACTURER
12" W DIF	1215 L.F.		CL 52 DIF	ATLANTIC STATES
8" W DIF	33 L.F.		CL 52 DIF	"
6" W DIF	50 L.F.		CL 52 DIF	"
12" VALVE	1 EACH	1 EA	RSG	MUELLER
8" VALVE	1 EACH	1 EA	RSG	"
6" VALVE	2 EACH	2 EA	RSG	"
12" PLUG	1 EACH	1 EA	"	"
8" PLUG	1 EACH	1 EA	"	"
FIRE HYDRANT	2 EACH	2 EA	CONTRON	"

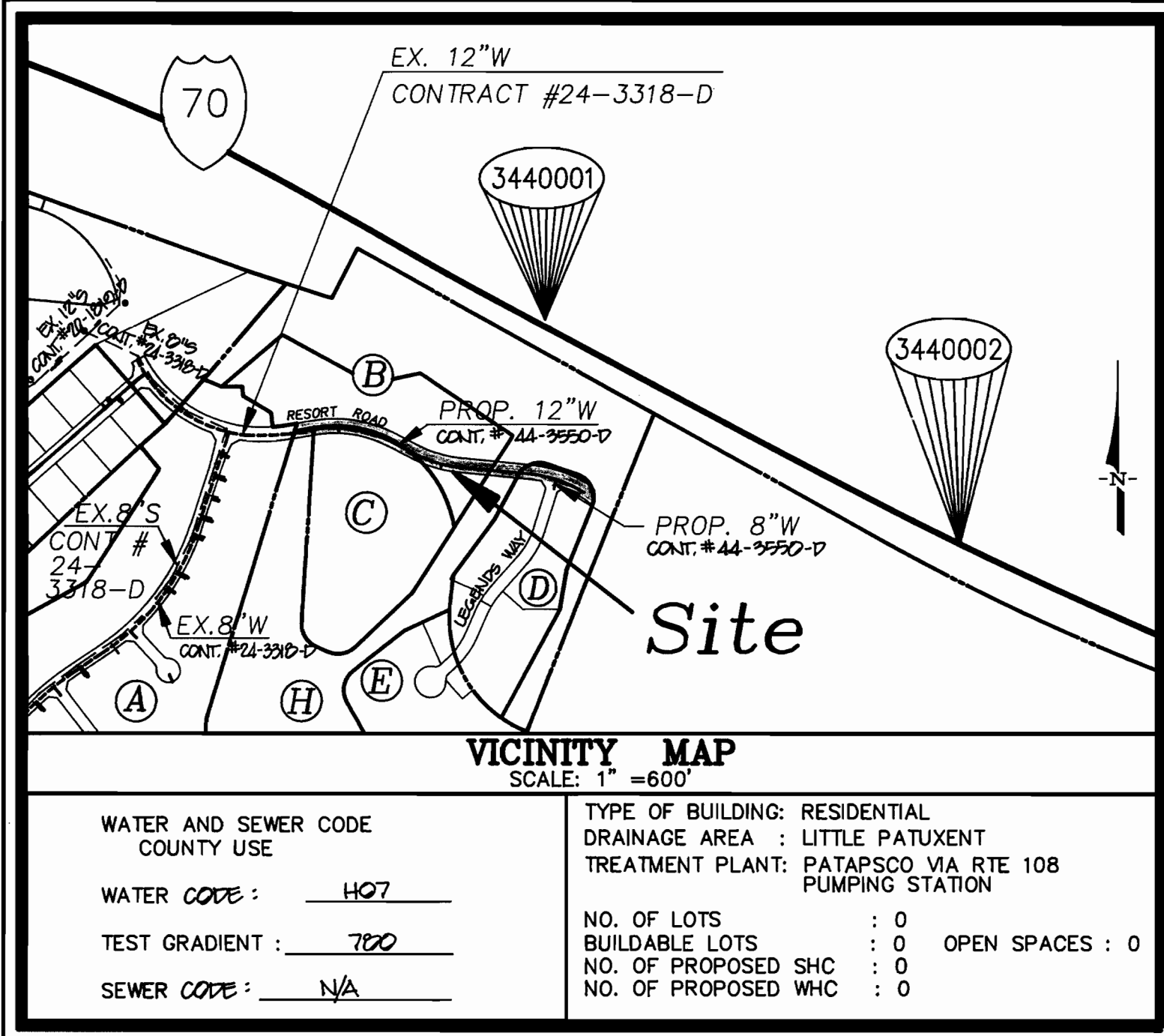
NAME OF UTILITY CONTRACTOR: _____

CHECKBOX: _____

AS-BUILT DATE: _____

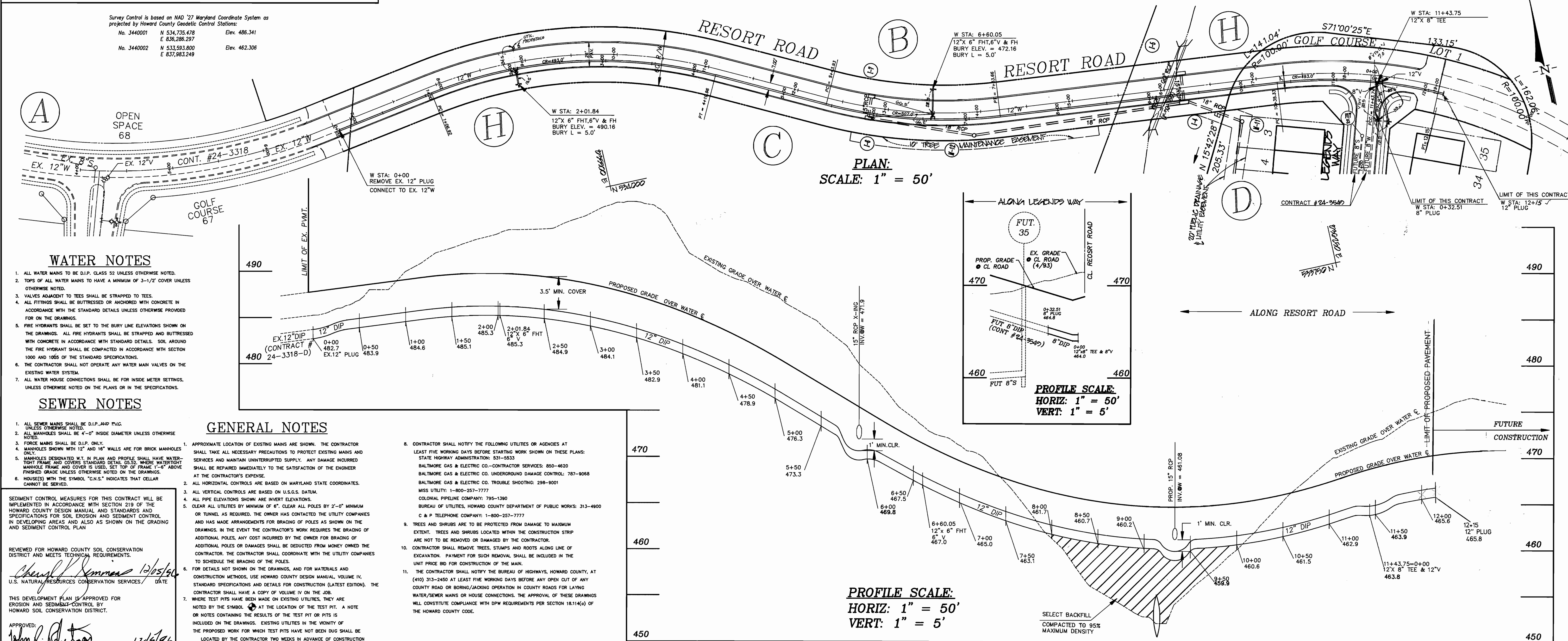
SURVEY AND DRAFTING DIVISION _____

PLAN REFERENCE NUMBERS	
FDP PGCC DISTRICT, RESIDENTIAL SUBDISTRICT	F-96-150
SP-95-14	F-96-150



Survey Control is based on NAD '27 Maryland Coordinate System as projected by Howard County Geodetic Control Stations:

No. 3440001	N 534,735.478	Elev. 486.341
	E 836,286.297	
No. 3440002	N 533,593.800	Elev. 482.306
	E 837,983.249	



- ### WATER NOTES
- ALL WATER MAINS TO BE D.I.P. CLASS 52 UNLESS OTHERWISE NOTED.
 - TOPS OF ALL WATER MAINS TO HAVE A MINIMUM OF 3-1/2" COVER UNLESS OTHERWISE NOTED.
 - VALVES ADJACENT TO TEES SHALL BE STRAPPED TO TEES.
 - ALL FITTINGS SHALL BE BUTTRESSED OR ANCHORED WITH CONCRETE IN ACCORDANCE WITH THE STANDARD DETAILS UNLESS OTHERWISE PROVIDED FOR ON THE DRAWINGS.
 - FIRE HYDRANTS SHALL BE SET TO THE BURY LINE ELEVATIONS SHOWN ON THE DRAWINGS. ALL FIRE HYDRANTS SHALL BE STRAPPED AND BUTTRESSED WITH CONCRETE IN ACCORDANCE WITH STANDARD DETAILS. SOIL AROUND THE FIRE HYDRANT SHALL BE COMPACTED IN ACCORDANCE WITH SECTION 1000 AND 1005 OF THE STANDARD SPECIFICATIONS.
 - THE CONTRACTOR SHALL NOT OPERATE ANY WATER MAIN VALVES ON THE EXISTING WATER SYSTEM.
 - ALL WATER HOUSE CONNECTIONS SHALL BE FOR INSIDE METER SETTINGS, UNLESS OTHERWISE NOTED ON THE PLANS OR IN THE SPECIFICATIONS.

- ### SEWER NOTES
- ALL SEWER MAINS SHALL BE D.I.P. AND P.V.C. UNLESS OTHERWISE NOTED.
 - ALL MANHOLES SHALL BE 4'-0" INSIDE DIAMETER UNLESS OTHERWISE NOTED.
 - FORCE MAINS SHALL BE D.I.P. ONLY.
 - MANHOLES SHOWN WITH 12" AND 18" WALLS ARE FOR BRICK MANHOLES ONLY.
 - MANHOLES DESIGNATED W.T. IN PLAN AND PROFILE SHALL HAVE WATER-TIGHT FRAME AND COVERS STANDARD DETAIL 65.52. WHERE WATER-TIGHT MANHOLE FRAME AND COVERS ARE USED, SET TOP OF FRAME 1'-0" ABOVE FINISHED GRADE UNLESS OTHERWISE NOTED ON THE DRAWINGS.
 - HOUSES WITH THE SYMBOL "C.N.S." INDICATES THAT CELLAR CANNOT BE SERVED.

- ### GENERAL NOTES
- APPROXIMATE LOCATION OF EXISTING MAINS ARE SHOWN. THE CONTRACTOR SHALL TAKE ALL NECESSARY PRECAUTIONS TO PROTECT EXISTING MAINS AND SERVICES AND MAINTAIN UNINTERRUPTED SUPPLY. ANY DAMAGE INCURRED SHALL BE REPAIRED IMMEDIATELY TO THE SATISFACTION OF THE ENGINEER AT THE CONTRACTOR'S EXPENSE.
 - ALL HORIZONTAL CONTROLS ARE BASED ON MARYLAND STATE COORDINATES.
 - ALL VERTICAL CONTROLS ARE BASED ON U.S.G.S. DATUM.
 - ALL PIPE ELEVATIONS SHOWN ARE INVERT ELEVATIONS.
 - CLEAR ALL UTILITIES BY MINIMUM OF 6". CLEAR ALL POLES BY 2'-0" MINIMUM OR TUNNEL AS REQUIRED. THE OWNER HAS CONTACTED THE UTILITY COMPANIES AND HAS MADE ARRANGEMENTS FOR BRACING OF POLES AS SHOWN ON THE DRAWINGS. IN THE EVENT THE CONTRACTOR'S WORK REQUIRES THE BRACING OF ADDITIONAL POLES, ANY COST INCURRED BY THE OWNER FOR BRACING OF ADDITIONAL POLES OR DAMAGES SHALL BE DEDUCTED FROM MONEY OWNED BY THE CONTRACTOR. THE CONTRACTOR SHALL COORDINATE WITH THE UTILITY COMPANIES TO SCHEDULE THE BRACING OF THE POLES.
 - FOR DETAILS NOT SHOWN ON THE DRAWINGS, AND FOR MATERIALS AND CONSTRUCTION METHODS, USE HOWARD COUNTY DESIGN MANUAL, VOLUME IV, STANDARD SPECIFICATIONS AND DETAILS FOR CONSTRUCTION (LATEST EDITION). THE CONTRACTOR SHALL HAVE A COPY OF VOLUME IV ON THE JOB.
 - WHERE TEST PITS HAVE BEEN MADE ON EXISTING UTILITIES, THEY ARE NOTED BY THE SYMBOL \oplus AT THE LOCATION OF THE TEST PIT. A NOTE OR NOTES CONTAINING THE RESULTS OF THE TEST PIT OR PITS IS INCLUDED ON THE DRAWINGS. EXISTING UTILITIES IN THE VICINITY OF THE PROPOSED WORK FOR WHICH TEST PITS HAVE NOT BEEN DUG SHALL BE LOCATED BY THE CONTRACTOR TWO WEEKS IN ADVANCE OF CONSTRUCTION OPERATIONS AT HIS OWN EXPENSE.
 - CONTRACTOR SHALL NOTIFY THE FOLLOWING UTILITIES OR AGENCIES AT LEAST FIVE WORKING DAYS BEFORE STARTING WORK SHOWN ON THESE PLANS: STATE HIGHWAY ADMINISTRATION: 531-5533; BALTIMORE GAS & ELECTRIC CO.-CONTRACTOR SERVICES: 850-4620; BALTIMORE GAS & ELECTRIC CO. UNDERGROUND DAMAGE CONTROL: 787-9058; BALTIMORE GAS & ELECTRIC CO. TROUBLE SHOOTING: 298-8001; MISS UTILITY: 1-800-257-7777; COLONIAL PIPELINE COMPANY: 795-1390; BUREAU OF UTILITIES, HOWARD COUNTY DEPARTMENT OF PUBLIC WORKS: 313-4900; C & P TELEPHONE COMPANY: 1-800-257-7777.
 - TREES AND SHRUBS ARE TO BE PROTECTED FROM DAMAGE TO MAXIMUM EXTENT. TREES AND SHRUBS LOCATED WITHIN THE CONSTRUCTION STRIP ARE NOT TO BE REMOVED OR DAMAGED BY THE CONTRACTOR.
 - CONTRACTOR SHALL REMOVE TREES, STUMPS AND ROOTS ALONG LINE OF EXCAVATION. PAYMENT FOR SUCH REMOVAL SHALL BE INCLUDED IN THE UNIT PRICE BID FOR CONSTRUCTION OF THE MAIN.
 - THE CONTRACTOR SHALL NOTIFY THE BUREAU OF HIGHWAYS, HOWARD COUNTY, AT (410) 313-2450 AT LEAST FIVE WORKING DAYS BEFORE ANY OPEN CUT OF ANY COUNTY ROAD OR BORING/JACKING OPERATION IN COUNTY ROADS FOR LAYING WATER/SEWER MAINS OR HOUSE CONNECTIONS. THE APPROVAL OF THESE DRAWINGS WILL CONSTITUTE COMPLIANCE WITH DPW REQUIREMENTS PER SECTION 181.14(a) OF THE HOWARD COUNTY CODE.

SEDIMENT CONTROL MEASURES FOR THIS CONTRACT WILL BE IMPLEMENTED IN ACCORDANCE WITH SECTION 219 OF THE HOWARD COUNTY DESIGN MANUAL AND STANDARDS AND SPECIFICATIONS FOR SOIL EROSION AND SEDIMENT CONTROL IN DEVELOPING AREAS AND ALSO AS SHOWN ON THE GRADING AND SEDIMENT CONTROL PLAN.

REVIEWED FOR HOWARD COUNTY SOIL CONSERVATION DISTRICT AND MEETS TECHNICAL REQUIREMENTS.

Charles Hemmes 12/25/96
U.S. NATURAL RESOURCES CONSERVATION SERVICES DATE

THIS DEVELOPMENT PLAN IS APPROVED FOR EROSION AND SEDIMENT CONTROL BY HOWARD COUNTY SOIL CONSERVATION DISTRICT.

APPROVED: *John P. Dutton* 12/29/96
HOWARD COUNTY SOIL CONSERVATION DISTRICT DATE

DEPARTMENT OF PUBLIC WORKS
HOWARD COUNTY, MARYLAND

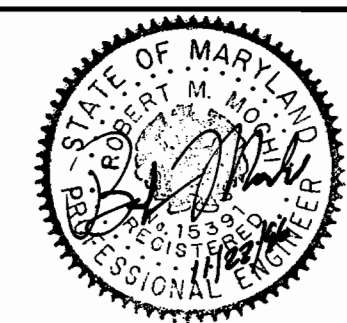
Robert Dutton 12-2-96
DATE

DEPARTMENT OF PLANNING & ZONING
HOWARD COUNTY, MARYLAND

John P. Dutton 12/2/96
DATE

R.M. MOCHI GROUP, INC.

3300 N. Ridge Road, Suite 235
Ellicott City, MD 21043-3350 (410) 461-0079
Fax: (410) 750-8340



DES: MWZ			
DRN: TVV	KOI 3	ASBUILT DATA ADDED TO PLAN	10/18/96
CHK: RMM	MMP 2	REV. LIMIT OF CONSTRUCTION	12/24/96
PROJ: 95016-20	LMNZ 1	REVISED PER DPZ/DEP COMMENTS, SUBMITTED ORDNANCE PER SUBMITTER	11/22/96
DATE: 5/21/96	MWZ 0	SUBMITTED TO DPZ/DEP FOR REVIEW	7/2/96
BY: NO.		REVISION	

TITLE SHEET & WATER MAIN
EXTENSION PLAN AND PROFILE

600' SCALE MAP NO. 16 BLOCK NO. 12, 18

TURF VALLEY PODS "D" & P/O "E"
PGCC DISTRICT, RESIDENTIAL SUBDISTRICT
PHASE I - MAJOR WATER MAIN FOR RESORT ROAD
CONTRACT NO. 44-3550-D
2ND ELECTION DISTRICT
HOWARD COUNTY, MARYLAND

SCALE AS SHOWN
SHEET 1 OF 1