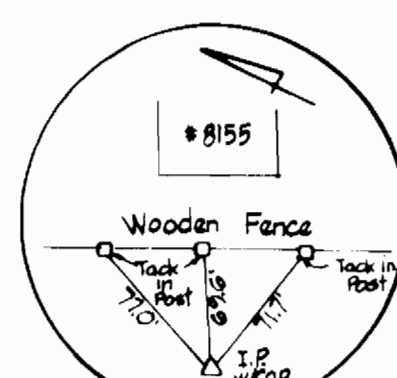
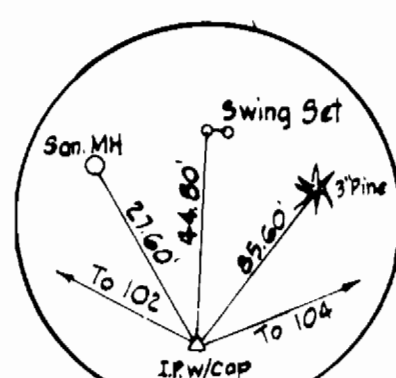


TRAVERSE POINT
H.C.#101
ELEV. 426.19



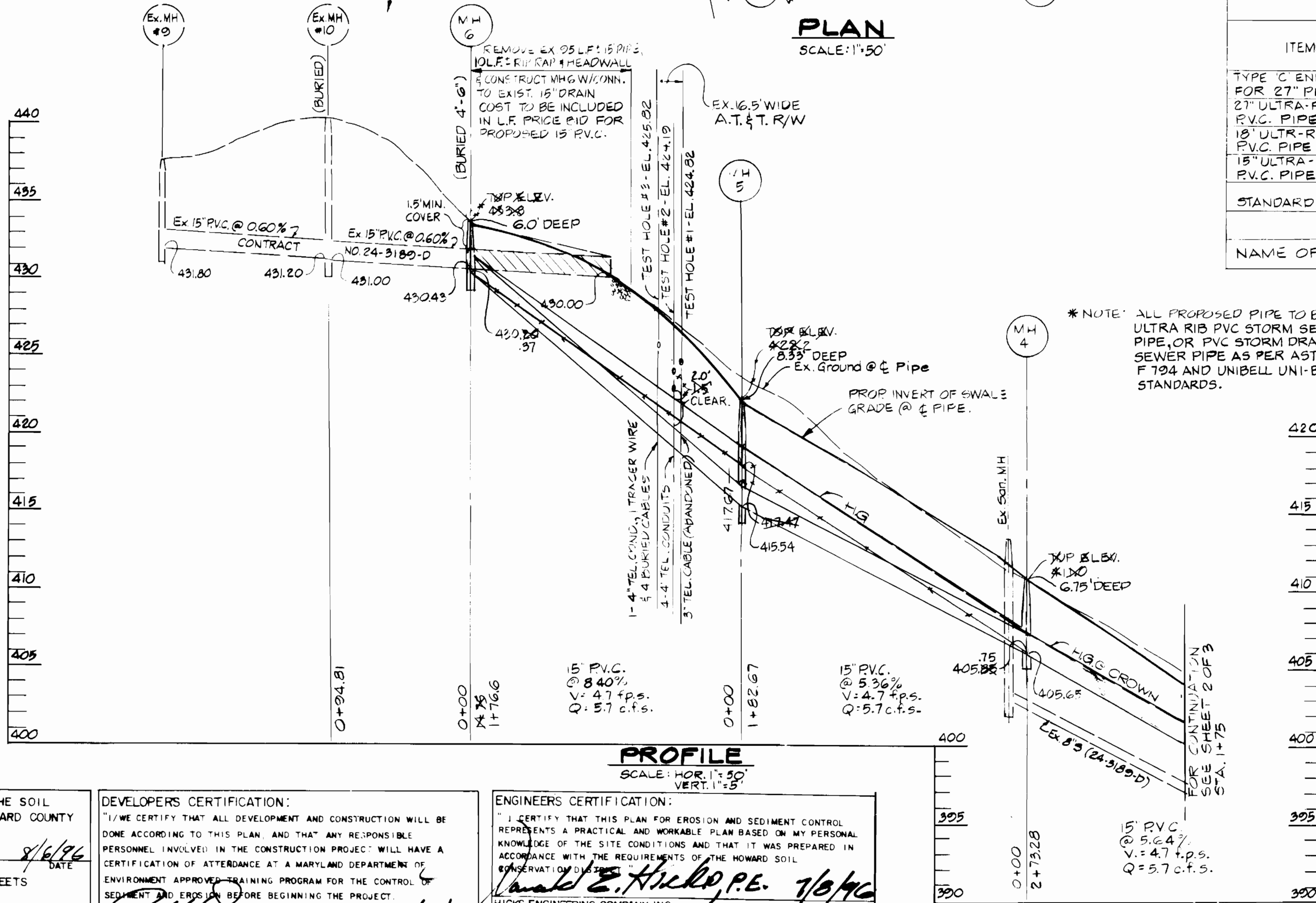
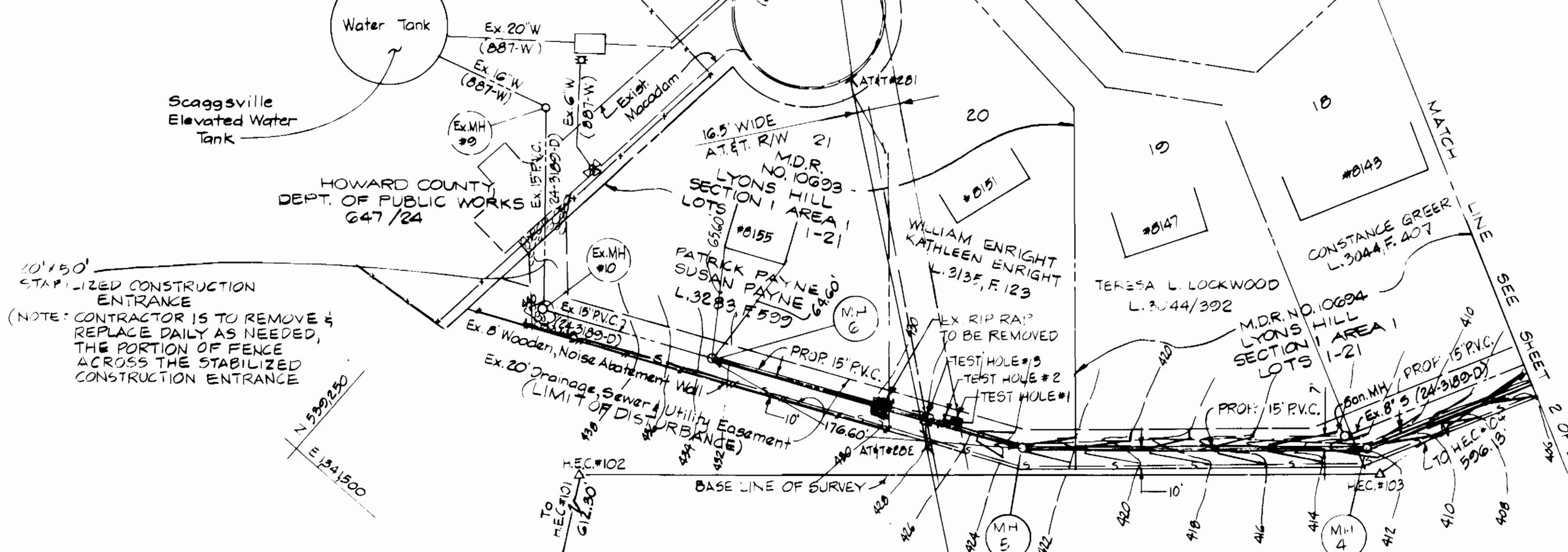
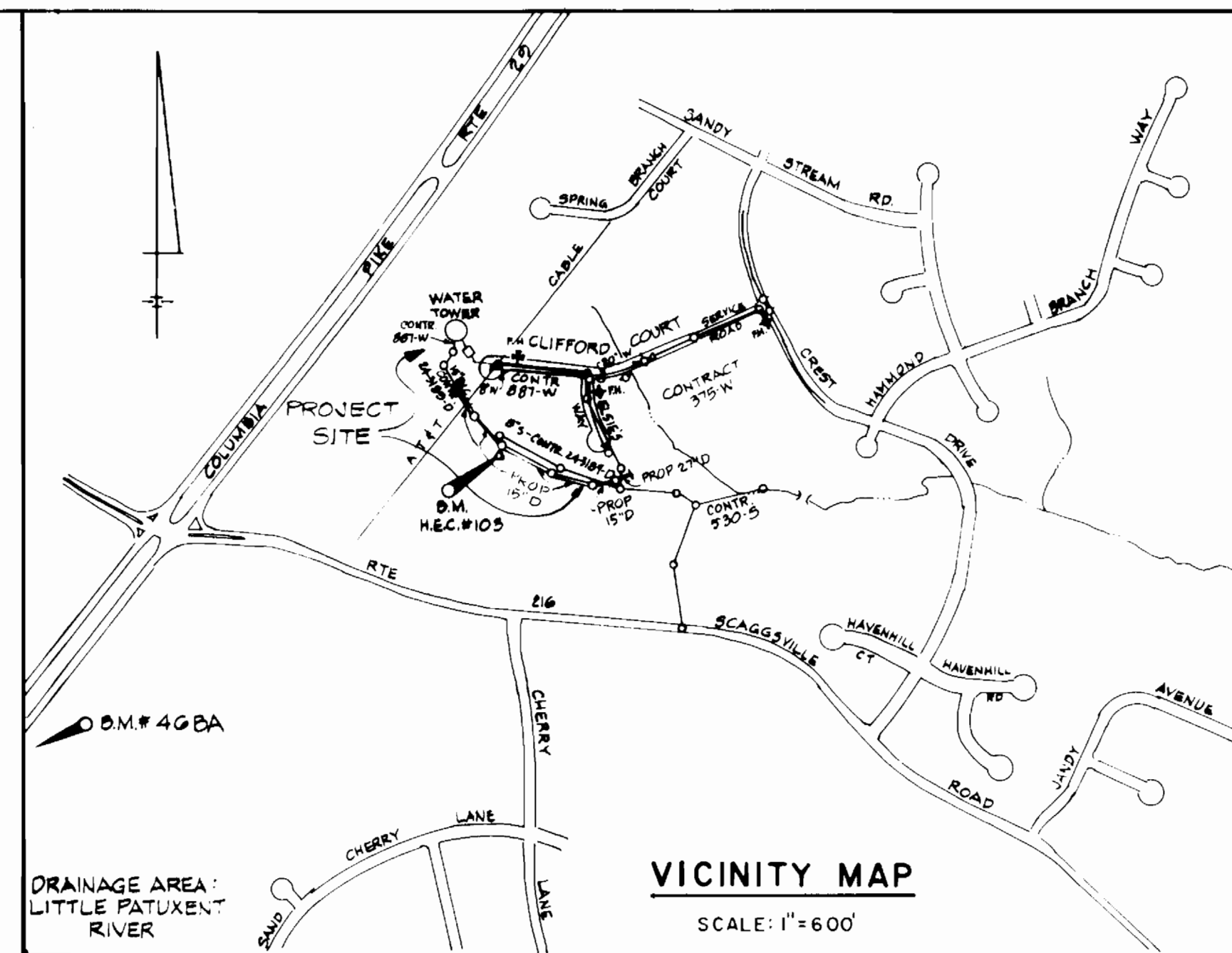
TRAVERSE POINT
H.C.#102
ELEV. 431.37



TRAVERSE POINT
H.C.#103
ELEV. 412.74

BENCH MARK - HOWARD CO B.M. NO. 46 BA
STANDARD DISC ON CONC. MON. ON EAST SIDE
OF RTE 29 32' WEST OF UTILITY POLE
ELEV. 426.48
B.G.E.#219014, CAP # G.
N 476797
E 827431

NOTE: LIMITS OF DISTURBANCE ARE TO FOLLOW THE LIMITS OF THE EXISTING DRAINAGE, SEWER & UTILITY EASEMENT AT THE REAR OF LOTS 11 THRU 14 AND LOTS 18-21 AND AS SHOWN WITHIN THE S.W.M. LOT.
NOTE: CONSTRUCTION SHALL BE LIMITED TO THAT WHICH CAN BE STABILIZED IN ONE WORK DAY.



ITEMS	QUANTITIES ESTIMATED	QUANTITIES AS-BUILT		
		QUANTITIES	TYPE	MANUFACTURER/SUPPLIER
TYPE C CONC WALL FOR 27" PIPE -	1 EACH	ONE	C	FOURED
27" ULTRA-RIB, P.V.C. PIPE *	38 LF	37.5 LF	P.V.C.	M & C SUPPLY
18" ULTRA-RIB P.V.C. PIPE *	115 LF	115.0 LF	P.V.C.	M & C SUPPLY
15" ULTRA-RIB P.V.C. PIPE *	795 LF	798 LF	P.V.C.	M & C SUPPLY
STANDARD MH	6 EA.	6 EA.	PRE-CAST	ATLANTIC PRECAST

NAME OF UTILITY CONTRACTOR: W.F. WILSON & SONS, INC.

NOTE: MH #6 IS SET BELOW FINISHED YARD GRADE 4" TO 6" PER MIKE GIOVANNIELLO OF THE BUREAU OF UTILITIES.

GENERAL NOTES

- Approximate location of existing mains are shown. The Contractor shall take all necessary precautions to protect existing mains and services and maintain uninterrupted service. Any damage incurred shall be repaired immediately to the satisfaction of the Engineer at the Contractor's expense.
- All horizontal controls are based on Maryland State Coordinates, NAD 83.
- All vertical controls are based on U.S.G.S. data.
- All pipe elevations shown are invert elevations unless otherwise noted on the plans.
- Clear all utilities by a minimum of 6". Clear all poles by 5'-0" minimum or tunnel as required. The owner has contacted the utility companies and has made arrangements for bracing of poles as shown on the drawings. In the event the Contractor's work requires the bracing of additional poles any cost incurred by the owner for the bracing of additional poles or damages shall be deducted from money owed the Contractor. The Contractor shall coordinate with the utility companies to schedule the bracing of the poles.
- For details not shown on the drawings, and for materials and construction methods, use Howard County Design Manual, Volume IV, Standard Specifications and Details for Construction (Latest Edition). The Contractor shall have a copy of Volume IV on the job site during the construction phase.
- Where test pits have been made on existing utilities, they are noted by the symbol [X] at the location of the test pit. A note or notes containing the results of the test pit or pits is included on the drawings. Existing utilities in the vicinity of the proposed work for which test pits have not been dug shall be located by the Contractor two weeks in advance of construction operations at his own expense.
- Contractor shall notify the following utility companies or agencies at least five working days before starting work shown on these plans:

AT&T	865-3803
B&A-E-Contractor Services	850-4620
B&A-E-Underground Damage Control	787-9088
Bureau of Utilities (DPW)	313-4800
Bell Atlantic-MD, Inc.	597-8585
Colonial Pipeline Co.	795-1390
Mias Utility	1-800-257-7777
State Highway Administration	531-5533
- Trees and shrubs are to be protected from damage to the maximum extent. Trees and shrubs located within the construction strip are not to be removed or damaged by the Contractor.
- Contractor shall remove trees, stumps and roots along line of excavation. Payment for such removal shall be included in the unit price bid for construction of the drain pipe.
- The contractor shall notify the Bureau of Highways, Howard County, at (410) 313-2450 at least five working days before any open cut of any County road or trenchless installation operation in County roads for laying the discharge pipe. The approval of these drawings will constitute compliance with DPW requirements per Section 18.114 (a) of the Howard County Code.
- All proposed pipe shall be "Ultra Rib", P.V.C. Storm Sewer Pipe, or PVC Storm Drain Sewer Pipe as per ASTM F 794 and UNIBELL UNI-B9 STANDARDS.
- All manholes shall be 4'-0" inside diameter, unless otherwise noted.
- The Contractor shall provide a joint in all storm sewer drains within 2'-0" of exterior manhole walls.
- All work will be in accordance with Howard County Standards and specifications for Soil Erosion and Sediment Control.
- Length of open trench will be limited to that which can be filled and stabilized within one working day.
- The Contractor shall confine all work within the existing County Right-of-Way and Easements shown on the drawings.

THIS DEVELOPMENT PLAN IS APPROVED FOR THE SOIL EROSION AND SEDIMENT CONTROL BY THE HOWARD COUNTY SOIL CONSERVATION DISTRICT.
APPROVED, HOWARD COUNTY S.C.D. DATE 8/6/96
REVIEWED FOR HOWARD COUNTY S.C.D. AND MEETS TECHNICAL REQUIREMENTS.
J. H. Waldfield, M. DATE 8/6/96
SPECIAL SERVICES DIVISION

DEVELOPERS CERTIFICATION:
"I, WE CERTIFY THAT ALL DEVELOPMENT AND CONSTRUCTION WILL BE DONE ACCORDING TO THIS PLAN, AND THAT ANY RESPONSIBLE PERSONNEL INVOLVED IN THE CONSTRUCTION PROJECT WILL HAVE A CERTIFICATION OF ATTENDANCE AT A MARYLAND DEPARTMENT OF ENVIRONMENT APPROVED TRAINING PROGRAM FOR THE CONTROL OF SEDIMENT AND EROSION BEFORE BEGINNING THE PROJECT."
Robert E. Sprom DATE 7/15/96
BUREAU OF ENGINEERING DEPARTMENT OF PUBLIC WORKS

ENGINEERS CERTIFICATION:
"I CERTIFY THAT THIS PLAN FOR EROSION AND SEDIMENT CONTROL REPRESENTS A PRACTICAL AND WORKABLE PLAN BASED ON MY PERSONAL KNOWLEDGE OF THE SITE CONDITIONS AND THAT IT WAS PREPARED IN ACCORDANCE WITH THE REQUIREMENTS OF THE HOWARD COUNTY SOIL CONSERVATION DISTRICT."
Robert E. Sprom, P.E. DATE 7/15/96
HICKS ENGINEERING COMPANY, INC.
ENGINEERS-SURVEYORS-PLANNERS
200 EAST JOPPA ROAD, SUITE 402
TOWSON, MARYLAND 21286 TEL: (410) 494-0001

DEPARTMENT OF PUBLIC WORKS
HOWARD COUNTY, MARYLAND
DIRECTOR OF PUBLIC WORKS DATE 7/16/96
Robert W. Beninger DATE 7-11-96
CHIEF, BUREAU OF UTILITIES

HICKS ENGINEERING CO. INC.
ENGINEERS SURVEYORS PLANNERS
200 E. JOPPA ROAD SUITE 402
TOWSON, MARYLAND 21286

DES: J.K.W.	FW	1	AS BUILT PLAN	12/96
DRN: F.W.				
CHK: D.E.H.				
DATE: 6/10/96	BY	NO.	REVISION	DATE

PLAN & PROFILE
ELEVATED WATER TANK
OVERFLOW DISCHARGE DRAIN
600' SCALE MAP NO. 246, W.42 BLOCK NO. 413

SCAGGSVILLE ELEVATED WATER TANK
6TH ELECTION DISTRICT
HOWARD COUNTY, MARYLAND
CAPITAL PROJECT W-8214
CONTRACT NO. 44-3546
SCALE AS SHOWN
SHEET 1 OF 2

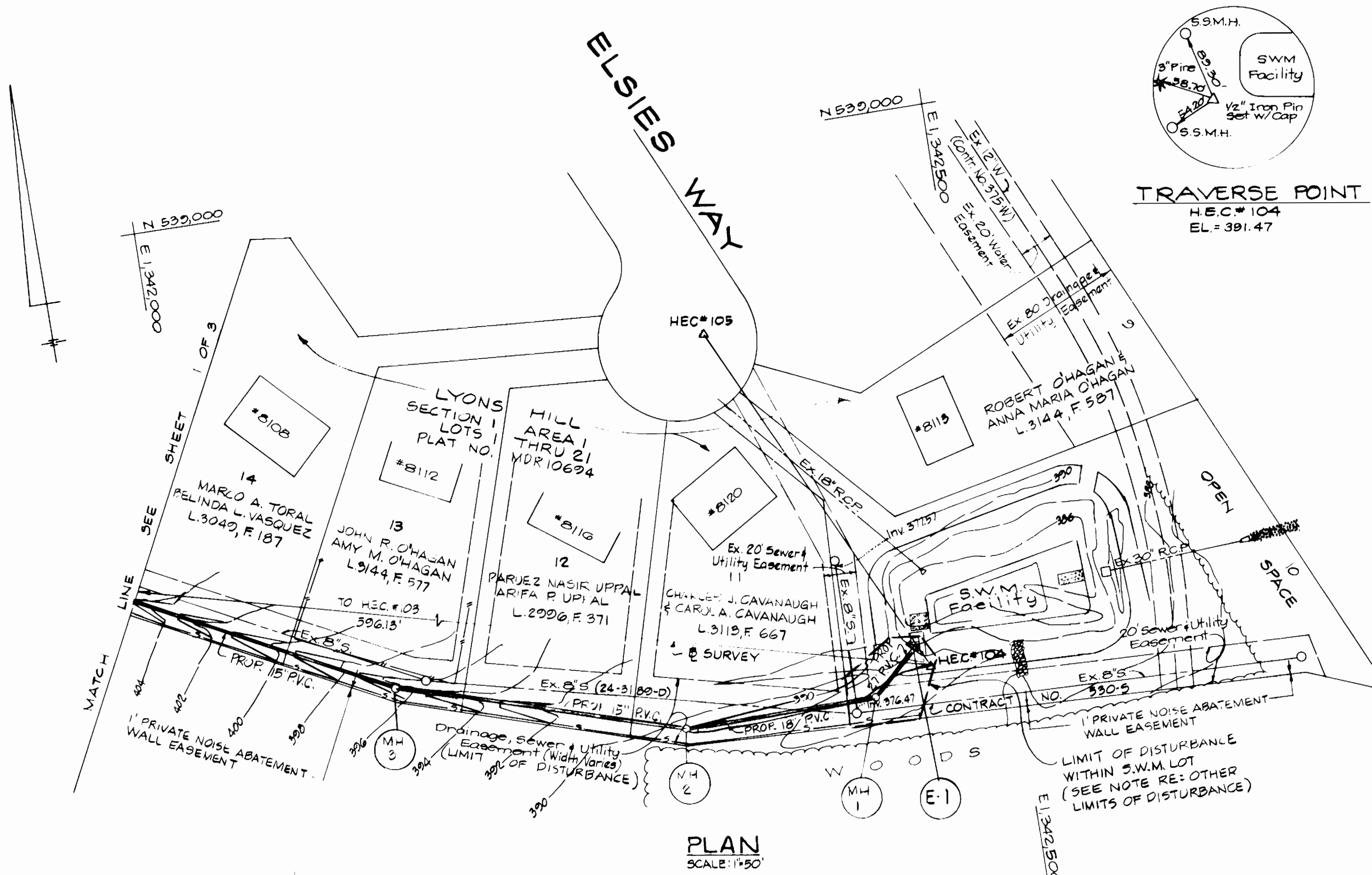
STAKEOUT DATA

DRAIN	CHARACTER	DISTANCE	OFFSET
E-1	H.E.C. #104 TO H.E.C. #103	10.64 L.F.	11.08 L.S. (RT.)
MH-1	H.E.C. #104 TO H.E.C. #103	32.43 L.F.	22.53 L.F. (LT.)
MH-2	H.E.C. #104 TO H.E.C. #103	147.89 L.F.	53.13 L.F. (LT.)
MH-3	H.E.C. #104 TO H.E.C. #103	328.38 L.F.	42.94 L.F. (LT.)
MH-4	H.E.C. #103 TO H.E.C. #106	866 L.F.	14.60 L.F. (RT.)
MH-5	H.E.C. #106 TO H.E.C. #103	61.79 L.F.	13.83 L.F. (LT.)
MH-6	H.E.C. #102 TO H.E.C. #103	71.3 L.F.	62.09 L.F. (LT.)

* ADJUST IN FIELD AS NECESSARY, MH-6 TO BE CONSTRUCTED OVER THE EXISTING 15" P.V.C. DRAIN.

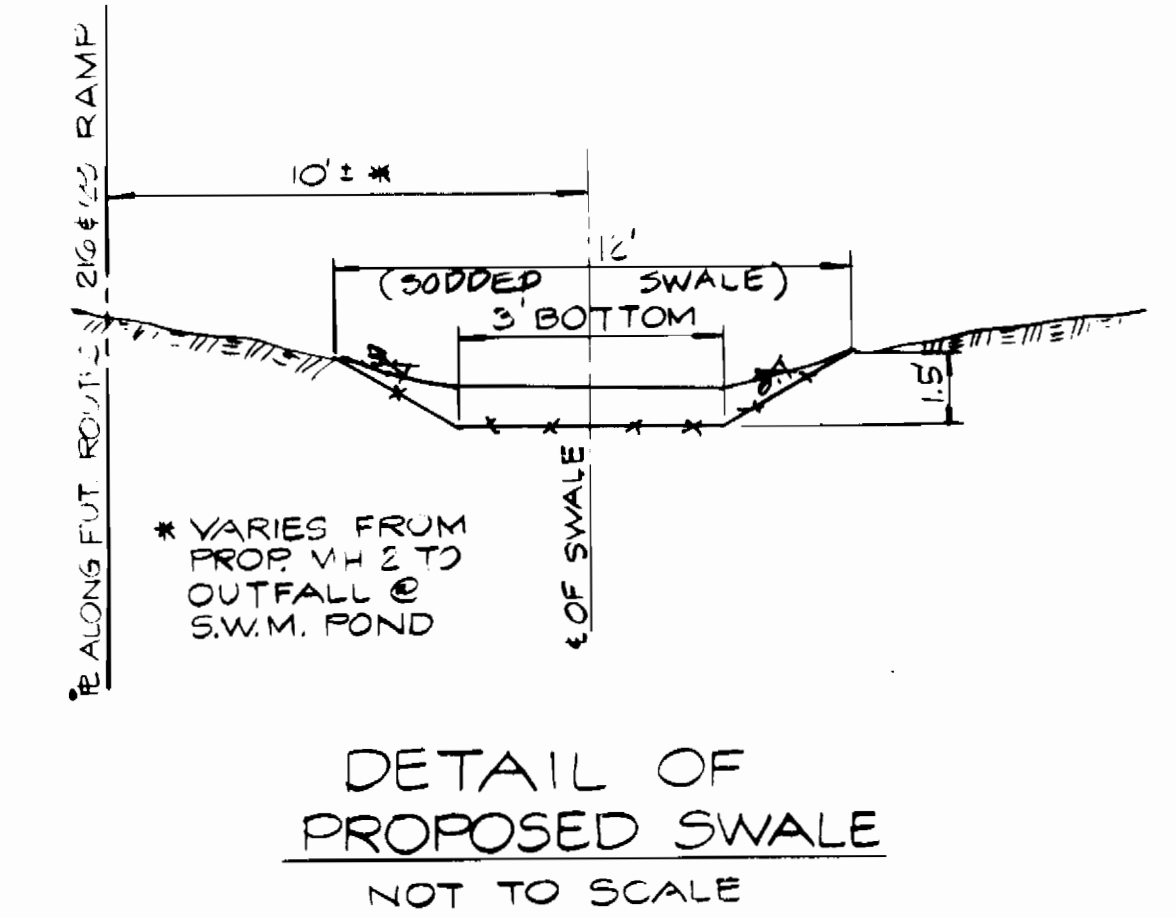
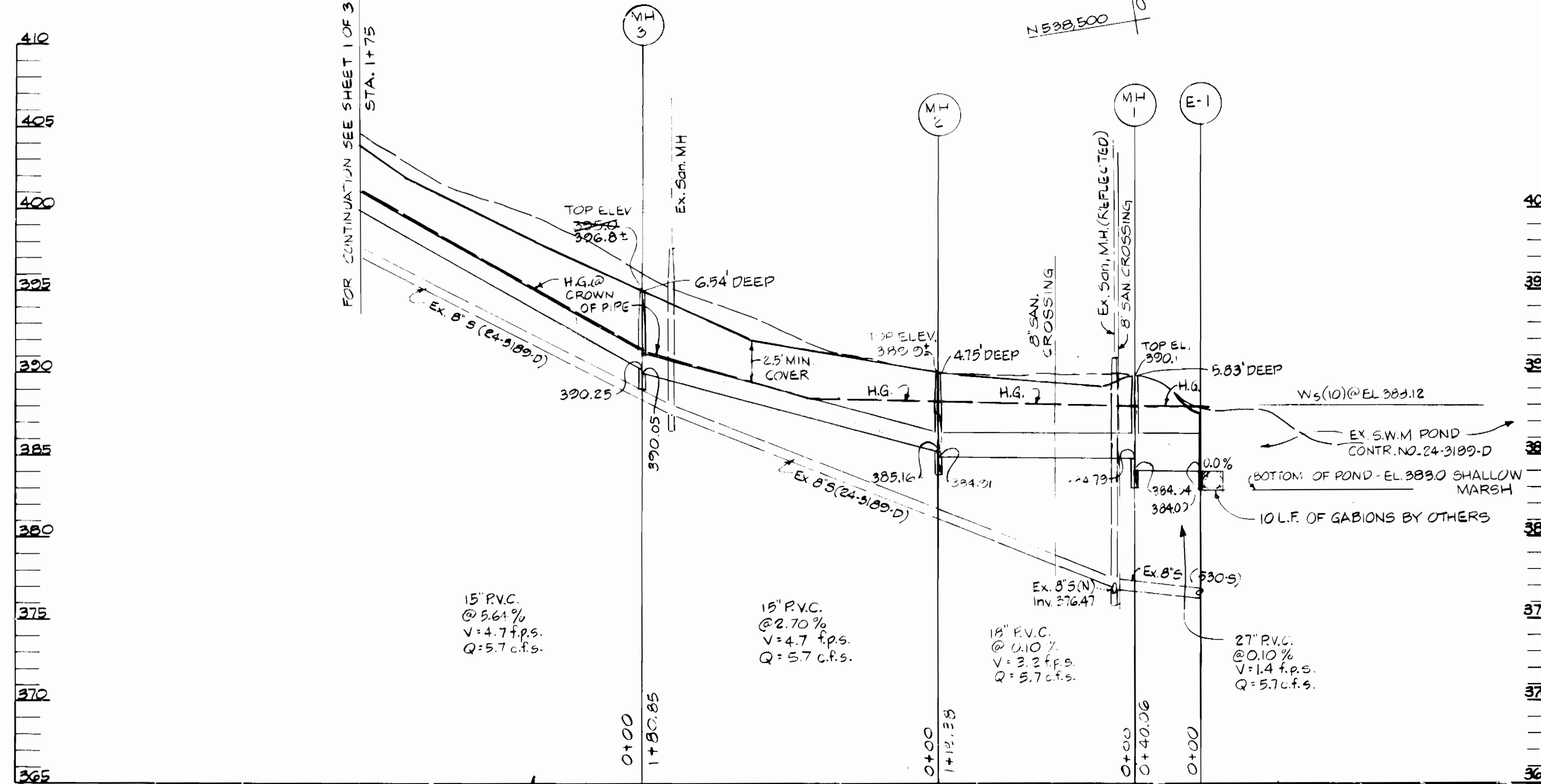
RESTORATION SCHEDULE

LOCATION	LENGTH	TYPE
E-1 TO MH-1	50 L.F.	SOD SWALE; SEED & MULCH
MH-1 TO MH-2	97 L.F.	SOD SWALE; SEED & MULCH
MH-2 TO MH-3	186 L.F.	SOD SWALE; SEED & MULCH
MH-3 TO MH-4	274 L.F.	SOD SWALE; SEED & MULCH
MH-4 TO MH-5	185 L.F.	SOD SWALE; SEED & MULCH
MH-5 TO MH-6	175 L.F.	SOD SWALE; SEED & MULCH



NOTE: LIMITS OF DISTURBANCE ARE TO FOLLOW THE LIMITS OF THE EXISTING DRAINAGE, SEWER & UTILITY EASEMENT AT THE REAR OF LOTS 11 THRU 14 AND LOTS 18-21 AND AS SHOWN WITHIN THE S.W.M. LOT.

NOTE: CONSTRUCTION SHALL BE LIMITED TO THAT WHICH CAN BE STABILIZED IN ONE WORK DAY.



PROFILE SCALE: HOR. 1\"/>

DEPARTMENT OF PUBLIC WORKS HOWARD COUNTY, MARYLAND Director of Public Works Robert W. Reinger Chief, Bureau of Utilities 7-11-96	HICKS ENGINEERING CO. (INC.) ENGINEERS SURVEYORS PLANNERS 200 E. JOPPA ROAD SUITE 402 TOWSON, MARYLAND 21286 7-10-96	DES. J.K.W. DRN. F.W. CHK. D.E.H. DATE 6/19/96	F.W. 1 AS-BUILT PLAN 12/96	PLAN & PROFILE ELEVATED WATER TANK OVERFLOW DISCHARGE DRAIN 600' SCALE MAP NO. 3-46 W-46 BLOCK NO. 445	SCAGGSVILLE ELEVATED WATER TANK 6 TH ELECTION DISTRICT HOWARD COUNTY, MARYLAND CAPITAL PROJECT W-8214 CONTRACT NO. 44-3546	SCALE AS SHOWN
						SHEET 2 OF 3