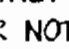


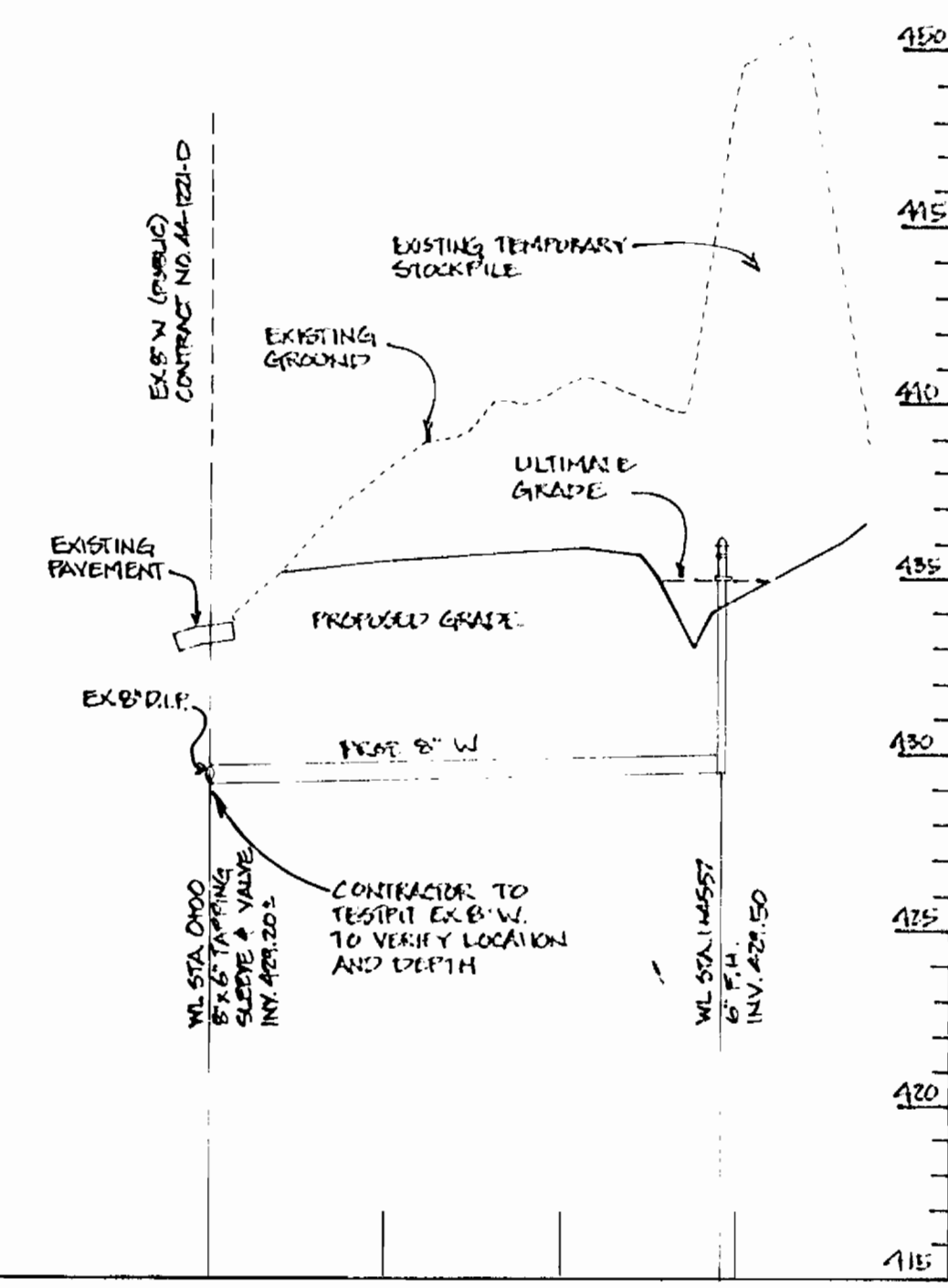
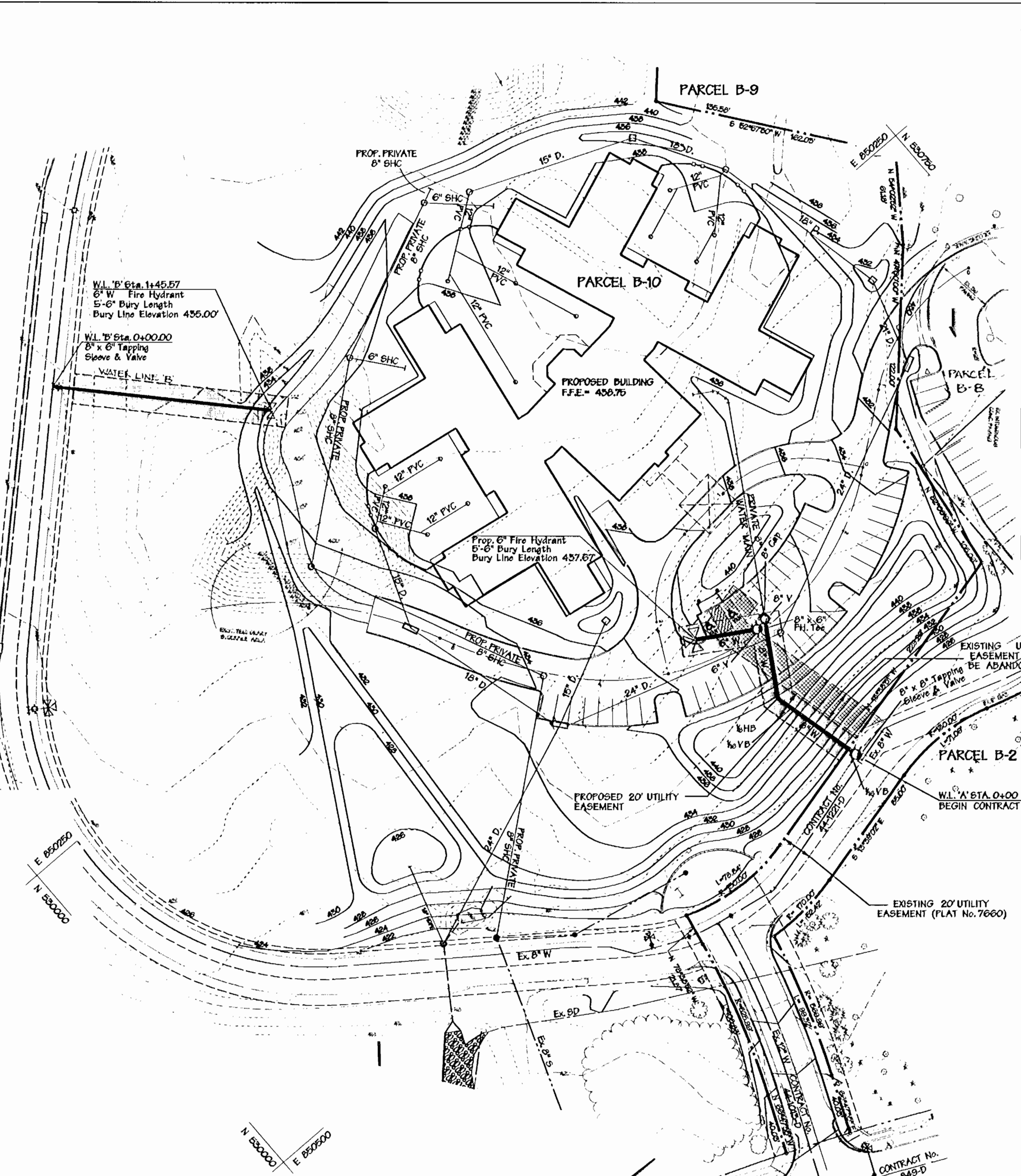
GENERAL NOTES

PART I

- APPROXIMATE LOCATION OF EXISTING MAINS ARE SHOWN. THE CONTRACTOR SHALL TAKE ALL NECESSARY PRECAUTIONS TO PROTECT EXISTING MAINS AND SERVICES AND MAINTAIN UNINTERRUPTED SUPPLY. ANY DAMAGE INCURRED SHALL BE REPAIRED IMMEDIATELY TO THE SATISFACTION OF THE ENGINEER AT THE CONTRACTOR'S EXPENSE.
- ALL HORIZONTAL CONTROLS ARE BASED ON MARYLAND STATE COORDINATES.
- ALL VERTICAL CONTROLS ARE BASED ON U.S.G.S. DATA.
- ALL PIPE ELEVATIONS SHOWN ARE INVERT ELEVATIONS.
- CLEAR ALL UTILITIES BY A MINIMUM OF 1'.
- FOR DETAILS NOT SHOWN ON THE DRAWINGS, AND FOR MATERIALS AND CONSTRUCTION METHODS, USE HOWARD COUNTY DESIGN MANUAL, VOLUME IV, STANDARD SPECIFICATIONS AND DETAILS FOR CONSTRUCTION. THE CONTRACTOR SHALL HAVE A COPY OF VOLUME IV ON THE JOB.
- WHERE TEST PITS HAVE BEEN MADE ON EXISTING UTILITIES, THEY ARE NOTED BY THE SYMBOL  AT THE LOCATION OF THE TEST PIT. A NOTE OR NOTES CONTAINING THE RESULTS OF THE TEST PIT OR PITS IS INCLUDED ON THE DRAWINGS. EXISTING UTILITIES IN THE VICINITY OF THE PROPOSED WORK FOR WHICH TEST PITS HAVE NOT BEEN DUG SHALL BE VERIFIED BY THE CONTRACTOR TO HIS OWN SATISFACTION. ANY DAMAGE TO EXISTING FACILITIES DUE TO THE CONTRACTOR'S NEGLIGENCE SHALL BE REPAIRED AT THE CONTRACTOR'S EXPENSE.
- CONTRACTOR SHALL NOTIFY THE FOLLOWING UTILITIES OR AGENCIES AT LEAST FIVE WORKING DAYS BEFORE STARTING WORK SHOWN ON THESE PLANS:
STATE HIGHWAY ADMINISTRATION - (410) 531-5533
BALTIMORE GAS & ELECTRIC CO. - CONTRACTOR SERVICES - (410) 850-4620
BALTIMORE GAS & ELECTRIC CO. UNDERGROUND DAMAGE CONTROL - (410) 787-9068
MISS UTILITY - 1-800-257-7777
CHESAPEAKE AND POTOMAC TELEPHONE CO. (410) 785-1390
COLONIAL PIPELINE CO. - (410) 795-1390
BUREAU OF UTILITIES, HOWARD COUNTY DEPARTMENT OF PUBLIC WORKS - (410) 313-4800
- TREES AND SHRUBS ARE TO BE PROTECTED FROM DAMAGE TO MAXIMUM EXTENT. TREES AND SHRUBS LOCATED WITHIN THE CONSTRUCTION STRIP ARE NOT TO BE REMOVED OR DAMAGED BY THE CONTRACTOR.
- CONTRACTOR SHALL REMOVE TREES, STUMPS AND ROOTS ALONG LINE OF EXCAVATION. PAYMENT FOR SUCH REMOVAL SHALL BE INCLUDED IN THE UNIT PRICE BID FOR CONSTRUCTION OF THE MAIN.
- THE CONTRACTOR SHALL NOTIFY THE BUREAU OF HIGHWAYS, HOWARD COUNTY, AT 410-313-2450 AT LEAST FIVE (5) WORKING DAYS BEFORE ANY OPEN CUT OF ANY COUNTY ROAD OR BORING/JACKING OPERATION IN COUNTY ROADS FOR LAYING WATER/SEWER MAINS OR HOUSE CONNECTIONS. THE APPROVAL OF THESE DRAWINGS WILL CONSTITUTE COMPLIANCE WITH DPW REQUIREMENTS PER SECTION 18.14(a) OF THE HOWARD COUNTY CODE.

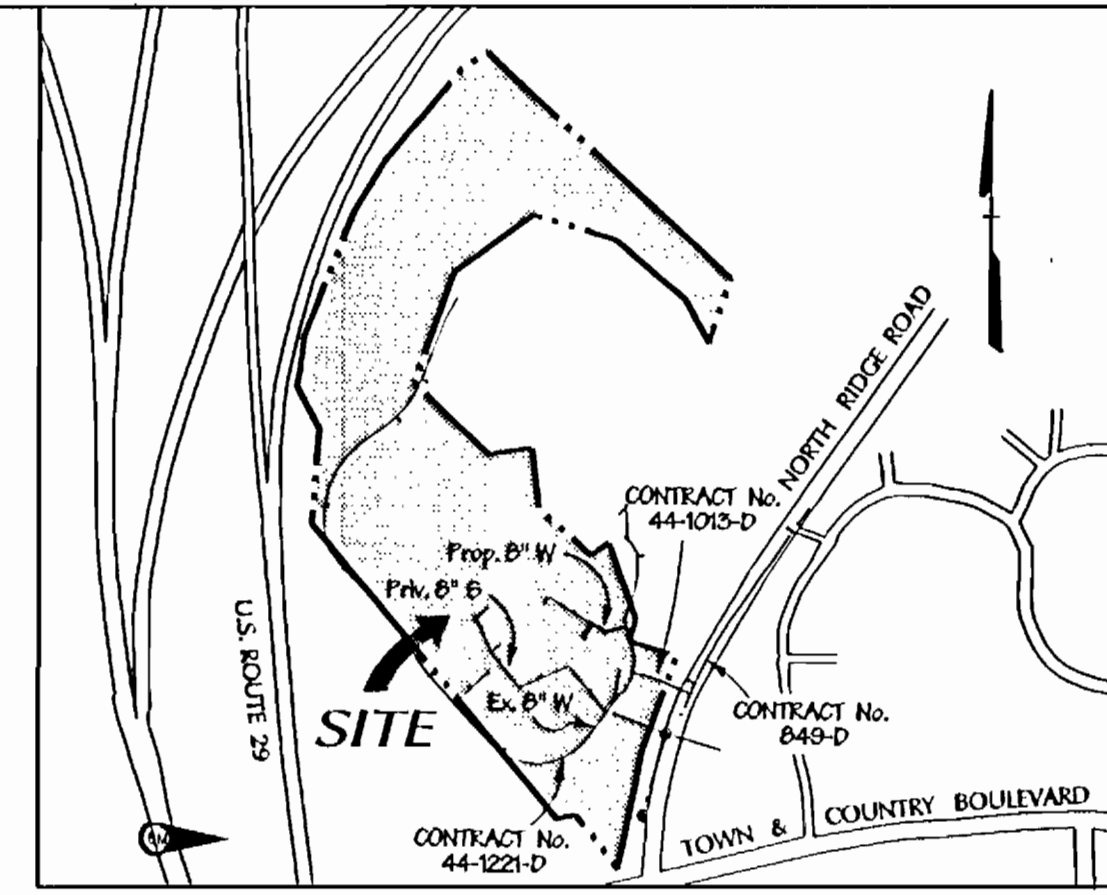
PART II - WATER

- ALL WATER MAINS TO BE D.I.P. CLASS B2 UNLESS OTHERWISE NOTED.
- TOPS OF ALL WATER MAINS TO HAVE A MINIMUM OF 3-1/2" COVER UNLESS OTHERWISE NOTED.
- VALVES ADJACENT TO TEES SHALL BE STRAPPED TO TEES.
- ALL FITTINGS SHALL BE BUTTRESSED OR ANCHORED WITH CONCRETE IN ACCORDANCE WITH THE STANDARD DETAILS UNLESS OTHERWISE PROVIDED FOR ON THE DRAWINGS.
- FIRE HYDRANTS SHALL BE SET TO THE BURY LINE ELEVATIONS SHOWN ON THE DRAWINGS. ALL FIRE HYDRANTS SHALL BE STRAPPED AND BUTTRESSED WITH CONCRETE IN ACCORDANCE WITH STANDARD DETAILS. SOIL AROUND THE FIRE HYDRANT SHALL BE COMPACTED IN ACCORDANCE WITH SECTION 1003 OF THE STANDARD SPECIFICATIONS.
- THE CONTRACTOR SHALL NOT OPERATE ANY WATER MAIN VALVES ON THE EXISTING WATER SYSTEM.
- ALL WATER HOUSE CONNECTIONS SHALL BE FOR INSIDE METER SETTINGS, UNLESS OTHERWISE NOTED ON THE PLANS OR IN THE SPECIFICATIONS.
- ALL D.I.P. FITTINGS SHALL BE IN ACCORDANCE WITH A.W.W.A. SPECIFICATION C-153 DUCTILE IRON COMPACT FITTINGS, 3 INCH THROUGH 12 INCH FOR WATER AND OTHER LIQUIDS.
- ALL EXISTING VALVES TO BE CLOSED WHEN CONNECTION TO THE SYSTEM IS MADE.



PUBLIC 8" WATER SERVICE
SCALE: HORIZ. 1"=50'
VERT. 1"=5'

NOTE: THIS PLAN SUPERCEDES THE PREVIOUSLY APPROVED PLAN (7/10/94) UNDER THIS CONTRACT NUMBER 44-3537-D.



LOCATION MAP

SCALE: 1" = 600'

TYPE OF BUILDING: ASSISTED LIVING FACILITY

NO. OF LOTS / PARCELS	1
NO. OF WATER HOUSE CONNECTIONS	1
NO. OF SEWER HOUSE CONNECTIONS	1
DRAINAGE AREA	PATAF600
TREATMENT PLANT:	PATAF600 WASTEWATER TREATMENT PLANT BALTIMORE, MARYLAND

WATER CODE: F03
TEST GRADIENT: 700
SEWER CODE: 1454400

BENCHMARK

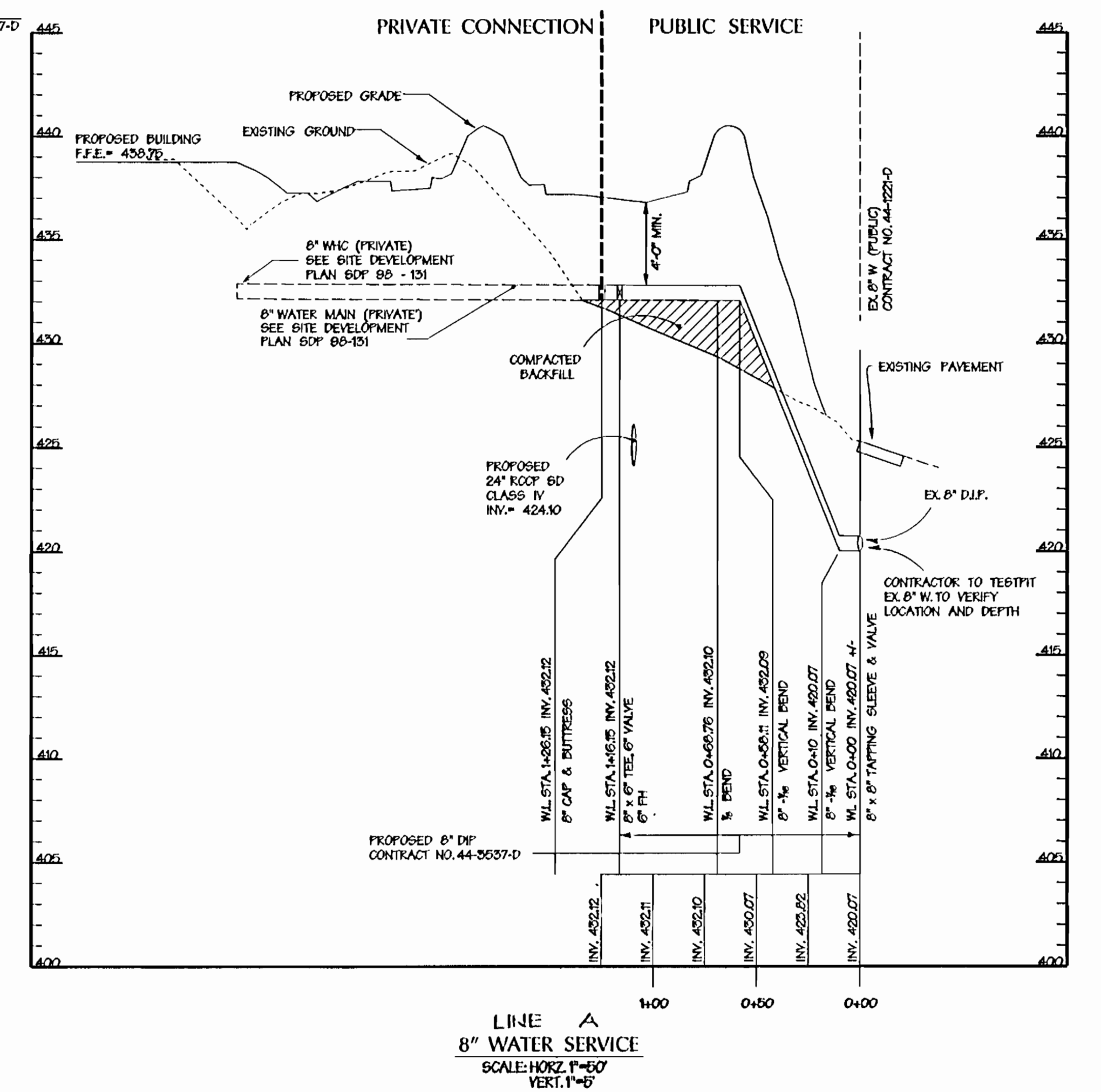
CONTROL STATION 3342001 (NAD27) ELEVATION = 469.057 BEING A CORRECT MONUMENT ON TOP OF HOGSBACK BETWEEN MARYLAND RTE. 28 NORTH AND SOUTH, 4000' +/- NORTH OF U.S. RTE. 40, N 029,062.572 E 849,355.616

CONTROL STATION 3443001 (NAD27) ELEVATION = 466.882 BEING A 3/4" REINFORCING ROD SET IN GRAVEL SHOULDER 0.2' BELOW SURFACE, 21.8' EAST OF CENTER OF RTE. 99.

QUANTITIES				
ITEMS	QUANTITIES ESTIMATED	AS-BUILT		
		QUANTITIES	TYPE	MANUFACTURER / SUPPLIER
8" D.I.P.	116 L.F.			
6" D.I.P.	190 L.F.			
8" x 8" TAPPING SLEEVE & VALVE	1 ea.			
8" x 6" TAPPING SLEEVE & VALVE	1 ea.			
8" x 6" TEE	1 ea.			
8" VALVE	1 ea.			
6" VALVE	1 ea.			
6" FIRE HYDRANT	2 ea.			
8" CAP	1 ea.			

NAME OF UTILITY CONTRACTOR:
SURVEY AND DRAFTING DIVISION AS-BUILT DATE:

APPURTENANCE SCHEDULE				
WATER LINE	APPURTENANCE	NORTHING	EASTING	W.L. STATION
'A'	8" x 8" Tapping Sleeve	Connect to Existing Main		STA. 0+00.00
	116 VB	530461.89	850538.34	STA. 0+10.00
	116 VB	530450.20	850490.60	STA. 0+58.11
	116 VB	530447.92	850481.27	STA. 0+68.76
	8" x 6" Tee	530472.49	850440.75	STA. 1+16.15
	6" Cap & Buttress	530477.69	850432.20	STA. 1+26.15
	6" Hydrant	530431.98	850416.17	STA. 1+16.15 47.39' LT
'B'	8" x 6" Tapping Sleeve	Connect to Existing Main		STA. 0+00.00
	6" Hydrant	530318.56	850118.44	STA. 1+45.57



REVIEWED FOR NATURAL RESOURCE CONSERVATION SERVICE AND MEETS TECHNICAL REQUIREMENT

SIGNATURE: *[Signature]* DATE: 9/1/98

THIS DEVELOPMENT PLAN IS APPROVED FOR SOIL EROSION AND SEDIMENT CONTROL BY THE HOWARD COUNTY CONSERVATION DISTRICT.

APPROVED: *[Signature]* DATE: 9/1/98

HOWARD S.C.D.

SEDIMENT CONTROL MEASURES WILL BE IMPLEMENTED IN ACCORDANCE WITH SECTION 219 OF THE SPECIFICATIONS AND SITE DEVELOPMENT PLAN SDP-98-131.

DEPARTMENT OF PUBLIC WORKS
HOWARD COUNTY, MARYLAND

[Signature] 8-31-98
CHIEF - BUREAU OF UTILITIES - DATE

DEPARTMENT OF PLANNING & ZONING
HOWARD COUNTY, MARYLAND

[Signature] 9/2/98
CHIEF - DEVELOPMENT ENGINEERING DIVISION - DATE

DMW
Daft · McCune · Walker, Inc.

A Team of Land Planners, 200 East Pennsylvania Avenue
Landscape Architects, 7th Floor, Maryland 21206
Engineers, Surveyors & Environmental Professionals 410 296 3333
Fax 296 4705



DESIGN BY: JLS
DRAWN BY: JMH
CHECKED BY:

DATE: July 14, 1998

BY	NO.	REVISION	DATE

WATER MAIN PLAN AND PROFILES

600 SCALE MAP NO. 17 BLOCK NO. 17 & 23

The Heartlands Retirement Community
An Elderly Dementia Specific Facility
Howard County, Maryland

PARCEL: B-10 No. OF LOTS: 1 ELECT. DISTRICT: 2

OWNER/DEVELOPER: THE HEARTLANDS RETIREMENT COMMUNITY - ELLICOTT CITY, INC.
66 CONSTELLATION SENIOR SERVICES, INC. 10400 LITTLE PATUXENT PARKWAY COLUMBIA, MD 21044

CONTRACT NO. 44-3537-D

SCALE: 1" = 50'

SHEET 1 OF 1