

BENCHMARK

CONTROL STATION 3342001 ELEVATION = 409.057
BEING A CORRECT MANAGEMENT ON TOP OF HODSBACK
BETWEEN PARCELS 29 NORTH AND SOUTH,
4000' S. NORTH OF U.S. ROUTE 40,
N 021,000.072' E 049,335.616'

CONTROL STATION 3443001 ELEVATION = 406.882
BEING A 3/4\"/>

VICINITY MAP

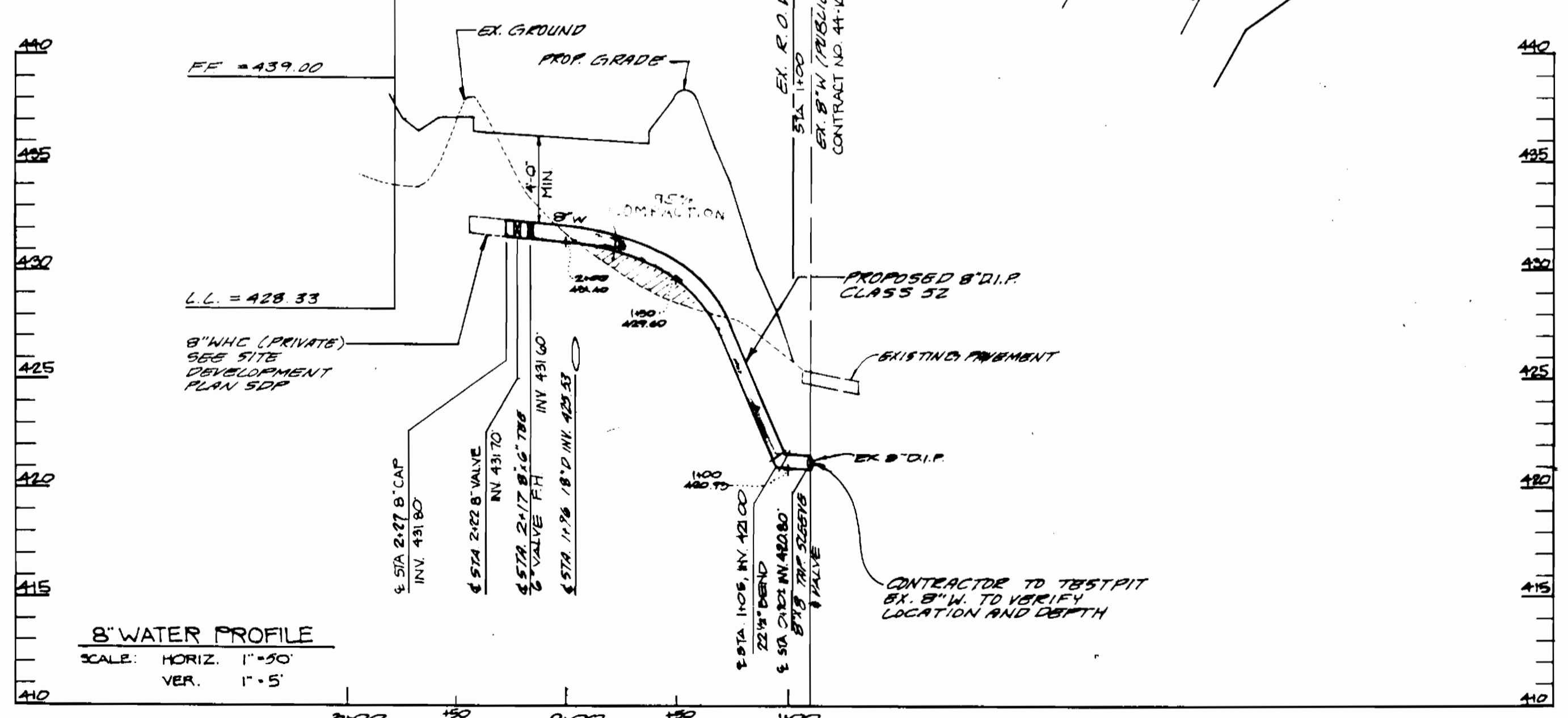
SCALE: 1\"/>

PART I - GENERAL NOTES

- APPROXIMATE LOCATION OF EXISTING MAINS ARE SHOWN. THE CONTRACTOR SHALL TAKE ALL NECESSARY PRECAUTIONS TO PROTECT EXISTING MAINS AND SERVICES AND MAINTAIN UNINTERRUPTED SUPPLY. ANY DAMAGE INCURRED SHALL BE REPAIRED IMMEDIATELY TO THE SATISFACTION OF THE ENGINEER AT THE CONTRACTOR'S EXPENSE.
- ALL HORIZONTAL CONTROLS ARE BASED ON MARYLAND STATE COORDINATES (NORTH AMERICAN DATUM OF 1927 (NAD 27)).
- ALL VERTICAL CONTROLS ARE BASED ON U.S.G.S. DATA.
- ALL PIPE ELEVATIONS SHOWN ARE INVERT ELEVATIONS.
- CLEAR ALL UTILITIES BY A MINIMUM OF 6 INCHES.
- FOR DETAILS NOT SHOWN ON THE DRAWINGS, AND FOR MATERIALS AND CONSTRUCTION METHODS, USE HOWARD COUNTY DESIGN MANUAL, VOLUME IV, STANDARD SPECIFICATIONS AND DETAILS FOR CONSTRUCTION LATEST EDITION. THE CONSTRUCTOR SHALL HAVE A COPY OF VOLUME IV ON THE JOB.
- WHERE TEST PITS HAVE BEEN MADE ON EXISTING UTILITIES, THEY ARE NOTED BY THE SYMBOL AT THE LOCATION OF THE TEST PIT. A NOTE OR NOTES CONTAINING THE RESULTS OF THE TEST PIT OR PITS IS INCLUDED ON THE DRAWINGS. EXISTING UTILITIES IN THE VICINITY OF THE PROPOSED WORK FOR WHICH TEST PITS HAVE NOT BEEN DUG SHALL BE VERIFIED BY THE CONTRACTOR TO HIS OWN SATISFACTION. ANY DAMAGE TO EXISTING FACILITIES DUE TO THE CONTRACTOR'S NEGLIGENCE SHALL BE REPAIRED AT THE CONTRACTOR'S EXPENSE.
- CONTRACTOR SHALL NOTIFY THE FOLLOWING UTILITIES OR AGENCIES AT LEAST FIVE WORKING DAYS BEFORE STARTING WORK SHOWN ON THESE PLANS:
STATE HIGHWAY ADMINISTRATION - 531-5533
BALTIMORE GAS & ELECTRIC CO. - CONTRACTOR SERVICES 850-4620
BALTIMORE GAS & ELECTRIC CO. UNDERGROUND DAMAGE CONTROL - 787-9068
BALTIMORE GAS & ELECTRIC CO. TROUBLE SHOOTING - 298-9013
MISS UTILITY - 1-800-257-7777
COLONIAL PIPELINE CO. - 795-1390
BUREAU OF UTILITIES, HOWARD COUNTY DEPARTMENT OF PUBLIC WORKS - 313-4900
- TREES AND SHRUBS ARE TO BE PROTECTED FROM DAMAGE TO MAXIMUM EXTENT. TREES AND SHRUBS LOCATED WITHIN THE CONSTRUCTION STRIP ARE NOT TO BE REMOVED OR DAMAGED BY THE CONTRACTOR.
- CONTRACTOR SHALL REMOVE TREES, STUMPS AND ROOTS ALONG LINE OF EXCAVATION. PAYMENT FOR SUCH REMOVAL SHALL BE INCLUDED IN THE UNIT PRICE BID FOR CONSTRUCTION OF THE MAIN.
- THE CONTRACTOR SHALL NOTIFY THE BUREAU OF HIGHWAYS, HOWARD COUNTY, AT (410) 313-2450 AT LEAST FIVE (5) WORKING DAYS BEFORE ANY OPEN CUT OF ANY COUNTY ROAD OR BORING/JACKING OPERATION IN COUNTY ROADS FOR LAYING WATER / SEWER MAINS OR HOUSE CONNECTIONS. THE APPROVAL OF THESE DRAWINGS WILL CONSTITUTE COMPLIANCE WITH DPW REQUIREMENTS PER SECTION 18.114 (d) OF THE HOWARD COUNTY CODE.

PART II - WATER

- ALL WATER MAINS TO BE D.J.P. CLASS 52 UNLESS OTHERWISE NOTED.
- TOPS OF ALL WATER MAINS TO HAVE A MINIMUM OF 40\"/>



QUANTITIES				
AS-BUILT				
ITEMS	QUANTITIES ESTIMATED	QUANTITIES	TYPE	MANUFACTURER / SUPPLIER
8\"/>				

REVIEWED FOR HOWARD SOIL CONSERVATION DISTRICT AND MEETS TECHNICAL REQUIREMENT

John K. Roberts 7/19/99
SIGNATURE DATE

THIS DEVELOPMENT PLAN IS APPROVED FOR SOIL EROSION AND SEDIMENT CONTROL BY THE HOWARD COUNTY CONSERVATION DISTRICT.

APPROVED *John K. Roberts* 7/19/99
DATE

SEDIMENT CONTROL MEASURES WILL BE IMPLEMENTED IN ACCORDANCE WITH SECTION 219 OF THE SPECIFICATIONS AND WITH (SDP 96-104).

DEPARTMENT OF PLANNING & ZONING
HOWARD COUNTY, MARYLAND

John K. Roberts 7/19/99
DATE

DEPARTMENT OF PUBLIC WORKS
HOWARD COUNTY, MARYLAND

John K. Roberts 7/19/99
DATE

DMW
Daft · McCune · Walker, Inc.
A Team of Land Planners, 200 East Pennsylvania Avenue
Landscape Architects, Towson, Maryland 21286
Engineers, Surveyors & 410 286 1333
Environmental Professionals Fax 286 4705

DESIGN BY:	DMW
DRAWN BY:	DMW
CHECKED BY:	JWR
DATE:	

BY	NO.	REVISION	DATE

THE HEARTLANDS RESIDENCE
AN ASSISTED LIVING FACILITY
BON SECOURS - HOWARD COUNTY HEALTH PARK
PARCEL B-7
2nd ELECTRICAL DISTRICT

SCALE
AS SHOWN
1\"/>