

GENERAL NOTES

PART I - GENERAL

- Approximate location of existing mains are shown. The contractor shall take all necessary precautions to protect existing mains and services and maintain uninterrupted supply. Any damage incurred shall be repaired immediately to the satisfaction of the Engineer at the Contractor's expense.
- All horizontal controls are based on Maryland State Coordinates. [North American Datum of 1983 (NAD '83)].
- All vertical controls are based on U.S.G.S. data.
- All pipe elevations shown are invert elevations.
- Clear all utilities by a minimum of 6". Clear all poles by 2'-0" minimum or tunnel as required. The owner has contacted the utility companies and has made arrangements for bracing of poles as shown on the drawings. In the event that the contractor's work requires the bracing of additional poles, any cost incurred by the owner for bracing of additional poles or damages shall be deducted from money owed the contractor. The contractor shall coordinate with the utility companies to schedule the bracing of the poles.
- For details not shown on the drawings, and for materials and construction methods, use Howard County Design Manual, Volume IV, Standard Specifications and Details for Construction (Latest Edition). The contractor shall have a copy of Volume IV on the job.
- Where test pits have been made on existing utilities, they are noted by the symbol at the location of the test pit. A note or notes containing the results of the test pit or pits is included on the drawings. Existing utilities in the vicinity of the proposed work for which test pits have not been dug shall be located by the contractor two weeks in advance of construction operations at his own expense.
- Contractor shall notify the following utility companies or agencies at least five working days before starting work shown on these plans:

State Highway Administration	531-5533
BG&E Co. Contractor Services	850-4620
BG&E Co. Under Ground Damage Control	787-9068
Miss Utility	1-800-257-7777
Colonial Pipeline Co.	795-1390
Howard County Department of Public Works Bureau of Utilities	313-4900
- Trees and shrubs are to be protected from damage to maximum extent. Trees and shrubs located within the construction strip are not to be removed or damaged by the contractor.
- Contractor shall remove trees, stumps and roots along line of excavation. Payment for such removal shall be included in the unit price bid for construction of the main.
- The contractor shall notify the Bureau of Highways, Howard County, at (410) 313-2450 at least five working days before any open cut of any County road or boring/jacking operation in County roads for laying water/sewer mains or house connections. The approval of these drawings will constitute compliance with DPW requirements per Section 18.114(a) of the Howard County Code.

PART II - WATER

- All water mains to be D.I.P. Class 52 unless otherwise noted.
- Tops of all water mains to have a minimum of 3-1/2' cover unless otherwise noted.
- Valves adjacent to tees shall be strapped to tees.
- All fittings shall be buttressed or anchored with concrete in accordance with the Standard Details unless otherwise provided for on the drawings.
- Fire hydrants shall be set to the bury line elevations shown of the drawings. All fire hydrants shall be restrained and buttressed with concrete in accordance with Standard Details. Soil around the fire hydrant shall be compacted in accordance with Sections 1000 and 1005 of the Standard Specifications.
- The contractor shall not operate any water main valves on the existing water system.
- All water house connections shall be for inside meter setting unless otherwise noted on plans or in specifications.

QUANTITIES				
ITEMS	QUANTITIES ESTIMATED	AS-BUILT		
		QUANTITIES	TYPE	MANUFACTURER/SUPPLIER
8" W	800 L.F.	719 L.F.	D.I.P.	ATLANTIC STATES
6" W	25 L.F.	97 "	"	"
FIRE HYDRANT	4 EA.	4 EA.	CAST IRON	MUELLER CO.
4" V	1 EA.	1 EA.	CAST IRON/AREVAL	"
6" V (EXCL. F.H.)	2 EA.	2 EA.	"	"
8" V	1 EA.	1 EA.	"	"
4" W	10 L.F.	10 L.F.	D.I.P.	ATLANTIC STATES

NAME OF UTILITY CONTRACTOR: UTILITIES UNLIMITED, INC.
SURVEY AND DRAFTING DIVISION AS-BUILT DATE:

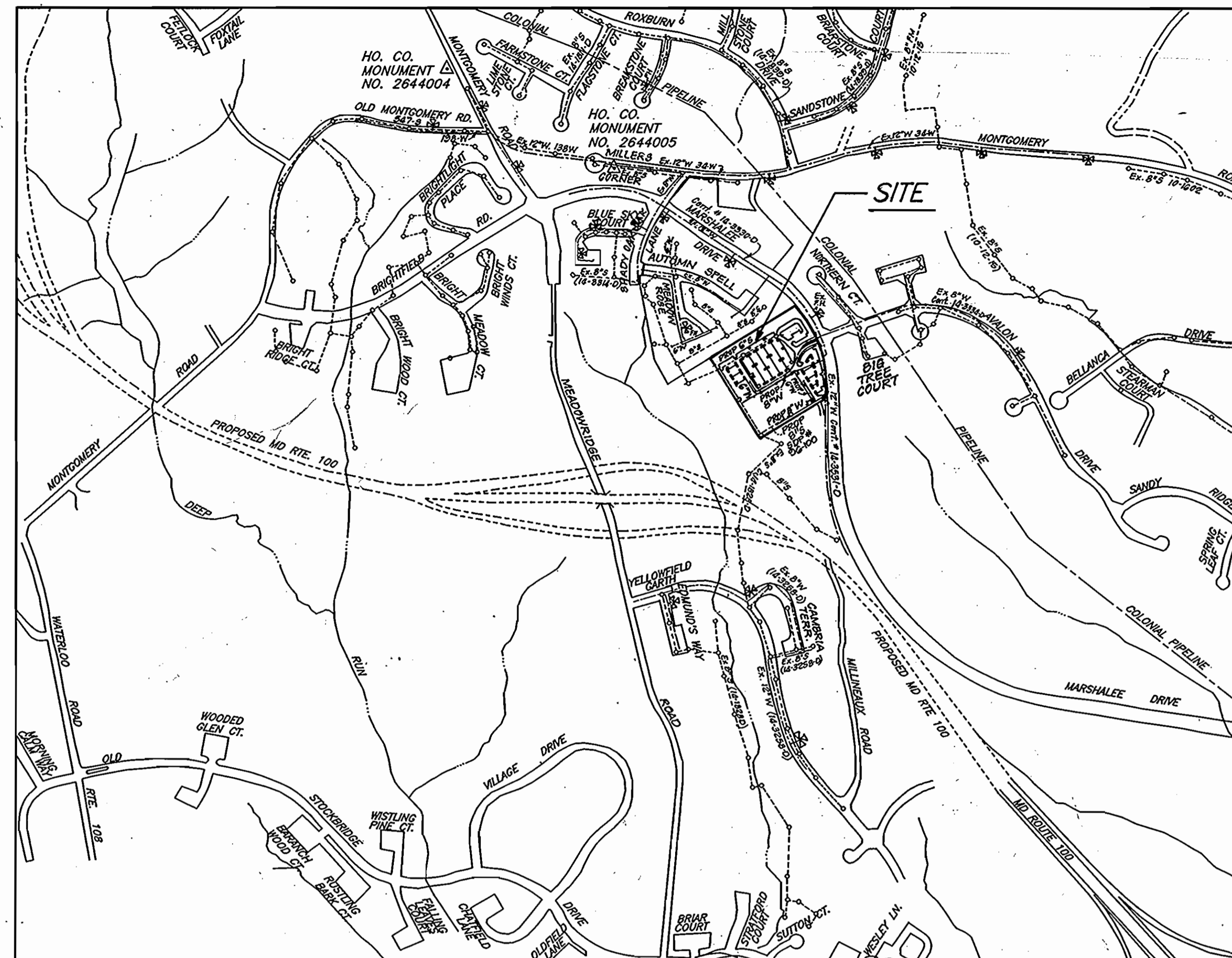
LOCATION	FROM	TO	DIST.
4" VALVE 0202	F.H.#1	4" VALVE	13'
8" X 4" TEE 1124	6" F.H. VALVE		10'
6" F.H. VALVE 0202	F.H.#1		4'
F.H.T. 1134	4" VALVE 832 TEE 1124		10'
6" F.H. VALVE 0202	F.H.#2		1'
F.H.T. 3133	F.H.#1		207'
6" F.H. VALVE 0202	F.H.#3		8'
F.H.T. 3133	6" M.L. VALVE SETS		5'
6" F.H. VALVE 0202	F.H.#4		15'
F.H.T. 0133	6" VALVE T-1137		120'
6" VALVE 0202	6" F.H. VALVE F.H.#4		120'
10" X 4" TEE 1137	SAN. MH-2		24'
6" VALVE 0202	SAN. MH-1		110'
8" X 4" TEE 3133	SAN. MH-2		15'
6" M.L. VALVE SETS	F.H.#3 6" VALVE SETS		11'

BENCH MARKS

HOWARD COUNTY MONUMENT NO. 2644004 ELEV. 402.135
HOWARD COUNTY MONUMENT NO. 2644005 ELEV. 416.931

DESCRIPTION

HOWARD COUNTY MONUMENT NO. 2644004: CONCRETE MONUMENT 1.0 FT. BELOW SURFACE S.W. CORNER OF INTERSECTION RTE. 103 AND OLD MONTGOMERY ROAD.
HOWARD COUNTY MONUMENT NO. 2644005: CONCRETE MONUMENT 2.0 FT. BELOW SURFACE SOUTH SIDE MONTGOMERY ROAD EAST OF MEADOWBRIDGE ROAD.



WATER & SEWER CODE:
COUNTY USE:
WATER NO.: D04
SEWER NO.: 2610000
TEST GRADIENT: 700.00

VICINITY MAP
SCALE: 1" = 600'

TYPE OF BUILDING	COMMERCIAL
NO. OF LOTS/PARCELS	1
NO. OF WATER HOUSE CONNECTIONS	4
NO. OF SEWER HOUSE CONNECTIONS	0
DRAINAGE AREA	PATAPSCO
TREATMENT PLANT	PATAPSCO W.Q.M.C.

CONTRACT NO. C-44-3527-D
LYNDWOOD SQUARE
PARCEL A-1
HOWARD COUNTY, MARYLAND
DEPARTMENT OF PUBLIC WORKS

SEDIMENT CONTROL MEASURES WILL BE IMPLEMENTED IN ACCORDANCE WITH SECTION 219 OF THE SPECIFICATIONS AND WITH ROAD CONSTRUCTION PLAN SDP-94-100; DRAWING SEDIMENT AND EROSION CONTROL.

REVIEWED FOR HOWARD SOIL CONSERVATION DISTRICT AND MEETS TECHNICAL REQUIREMENTS.

J. H. Warfield 7/19/96
SIGNATURE DATE

U. S. SOIL CONSERVATION SERVICE

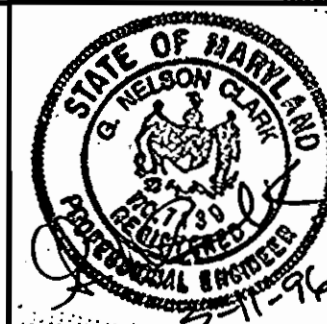
THIS DEVELOPMENT PLAN IS APPROVED FOR SOIL EROSION AND SEDIMENT CONTROL BY THE HOWARD SOIL CONSERVATION DISTRICT.

APPROVED:
John R. Robertson 7/19/96
HOWARD S. C. D. DATE

DEPARTMENT OF PUBLIC WORKS
HOWARD COUNTY, MARYLAND

DEPARTMENT OF PLANNING & ZONING
HOWARD COUNTY, MARYLAND

CLARK · FINEPROCK & SACKETT, INC.
ENGINEERS · PLANNERS · SURVEYORS
7135 MINSTREL WAY COLUMBIA, MD 21045
(410) 381-7500 BALT. (301) 621-8100 WASH.



DES: KIWM					
DRN: ZAH KIWM					
CHK: <i>Cent</i>					
DATE: JUNE 96	BY: NO.	REVISION	DATE	600' SCALE MAP NO. 37	BLOCK NO. 3

TITLE SHEET

LYNDWOOD SQUARE
PARCEL A-1
1ST ELECTION DISTRICT
HOWARD COUNTY, MARYLAND
CONTRACT No. C-44-3527-D

SCALE:
AS SHOWN
SHEET
1 OF 3

LYNDWOOD MANOR
SECTION 1 AREA 1
F-94-29
PLAT 11508

MARSHALEE

LYNDWOOD MANOR
SECTION 1 AREA 1
F-94-29
PLAT 11508

DRIVE

HOWARD COUNTY MARYLAND
PLATS 11515 AND 11517
F-94-29 AND F-94-26
ZONED RSC

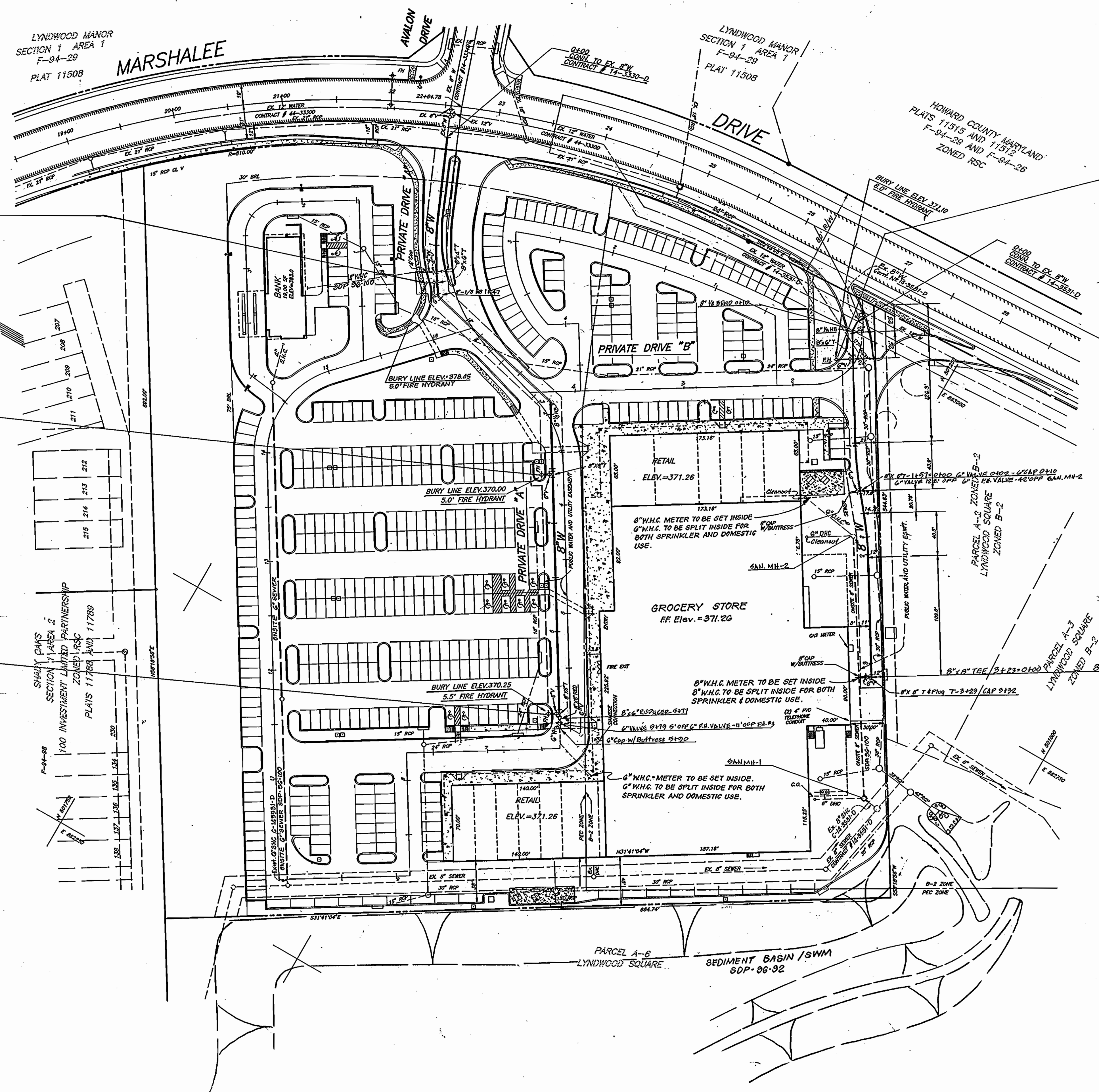
FILE #4
6.0' BURY
8" VALVE 0+00
6" F.H. 0+08
6" VALVE 6' OFF F.H. -10' OFF 4" V. STA. 1+24
F.H. SET 0.20 HIGH AND ON GRADE

FILE #1
5.0' BURY
8" VALVE 0+00
6" F.H. 0+08
6" VALVE 6' OFF F.H. -10' OFF 4" V. STA. 1+24
F.H. SET 0.20 HIGH AND ON GRADE

FILE #2
5.0' BURY
8" VALVE 0+00
6" F.H. 0+09
6" VALVE 7' OFF F.H. 2+207' OFF F.H. #1
F.H. SET 0.12 HIGH AND ON LINE

FILE #3
5.5' BURY
8" VALVE 0+00
6" F.H. 0+10
6" VALVE 0' OFF F.H. -0' OFF 6" M.L. VALVE 5+79
F.H. SET 0.15 HIGH AND ON LINE

STAKEOUT TABLE			
STREET NAME	STA	OFFSET	REMARKS
PRIVATE DRIVE A	1+00	8.6' RT.	8" W
PRIVATE DRIVE A	1+48	12.0' RT	8" X 4" T
PRIVATE DRIVE A	1+71	15.5' RT	8" 1/8 HB
PRIVATE DRIVE A	3+06.6	8.2' LT.	8" 1/8 HB
PRIVATE DRIVE A	3+72	10.0' RT	8" X 6" T
PRIVATE DRIVE A	3+72	20.0' RT	F.H.
PRIVATE DRIVE A	4+00	10.0' RT	8" W
PRIVATE DRIVE A	5+00	10.0' RT	8" W
PRIVATE DRIVE A	5+92	10.0' RT	8" X 6" T
PRIVATE DRIVE A	5+92	20.0' RT	F.H.
PRIVATE DRIVE A	5+92	10.0' RT	8" X 6" RED
PRIVATE DRIVE A	6+07	10.0' RT	6" GAP W/BUTTRESS
PRIVATE DRIVE A	1+57	13.0' RT	8" X 6" T

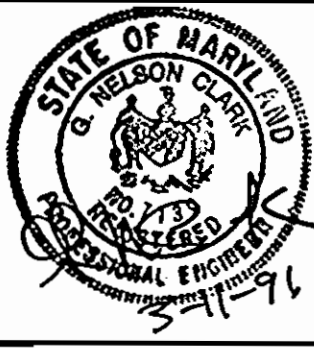


SQUARE

DEPARTMENT OF PUBLIC WORKS
HOWARD COUNTY, MARYLAND
7-11-96

DEPARTMENT OF PLANNING & ZONING
HOWARD COUNTY, MARYLAND
7/2/96

CLARK · FINEFROCK & SACKETT, INC.
ENGINEERS · PLANNERS · SURVEYORS
7135 MINSTREL WAY COLUMBIA, MD 21045
(410) 381-7500 BALT. (301) 621-8100 WASH.



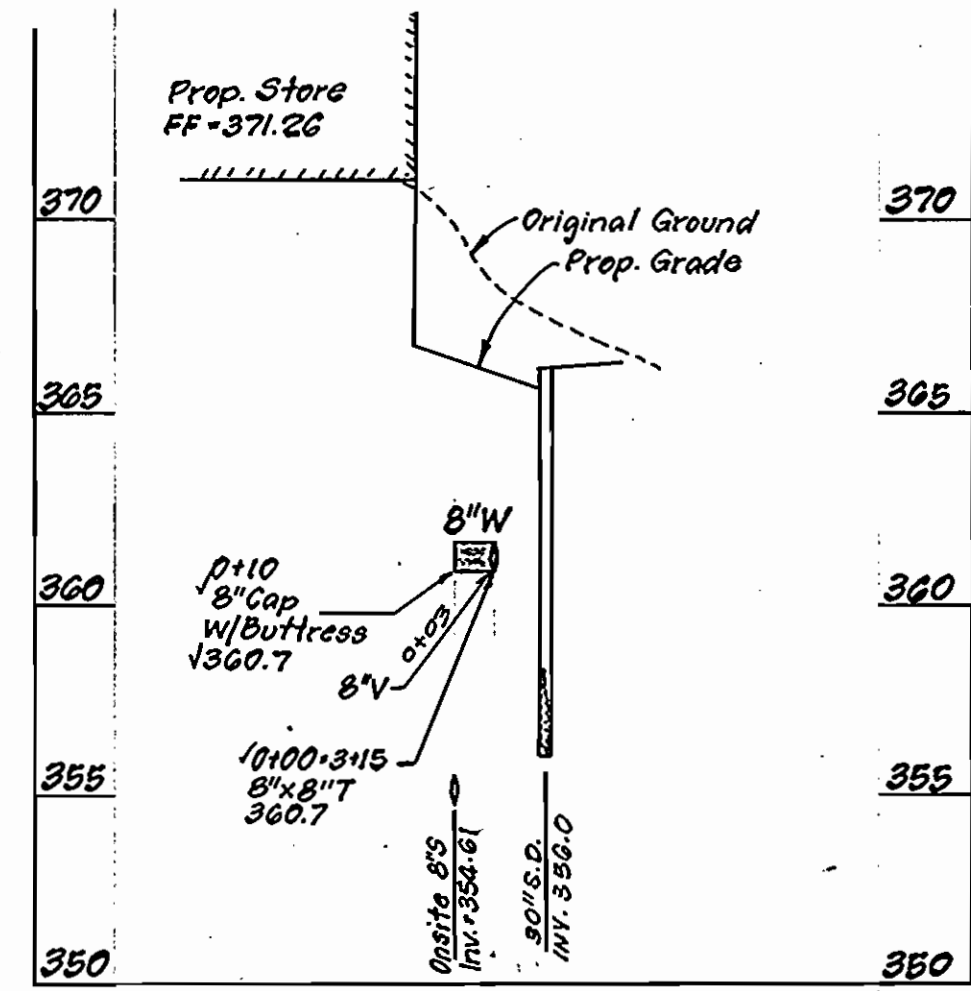
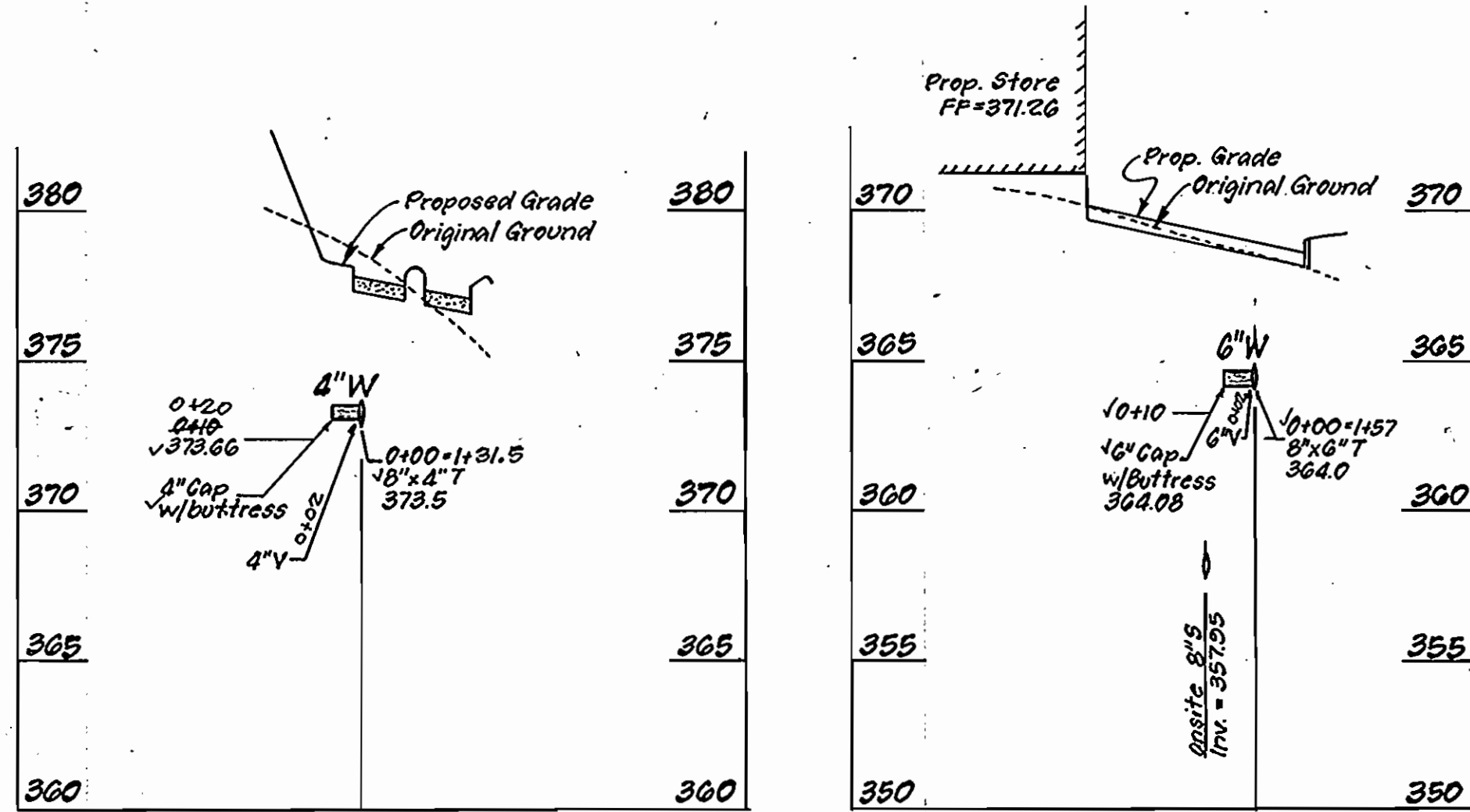
DES: KIWM					
DRN: KIWM					
CHK: COM					
DATE: JUNE 96	BY NO.	REVISION	DATE	600' SCALE MAP NO. 37	BLOCK NO. 3

PLAN SHEET

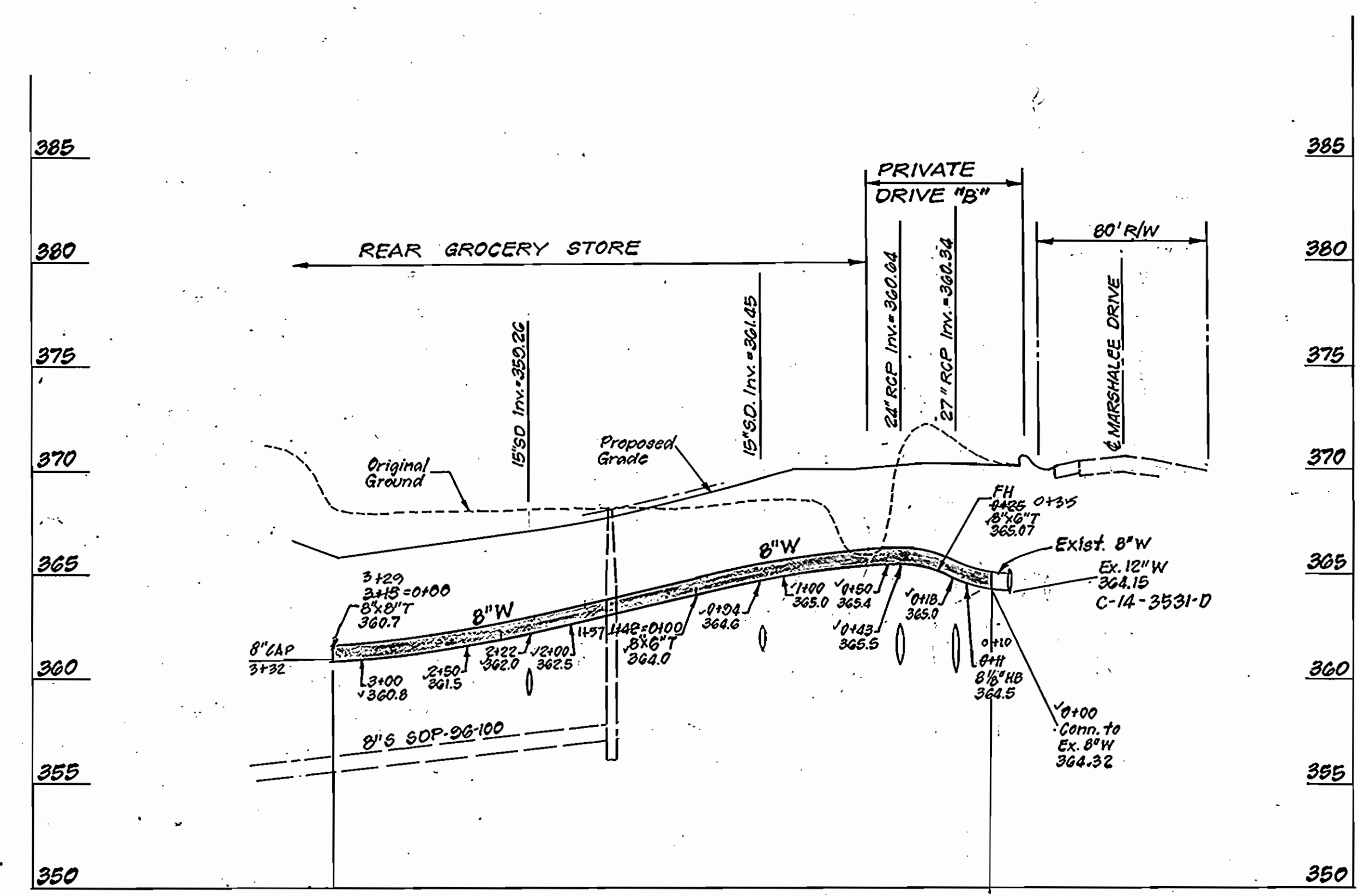
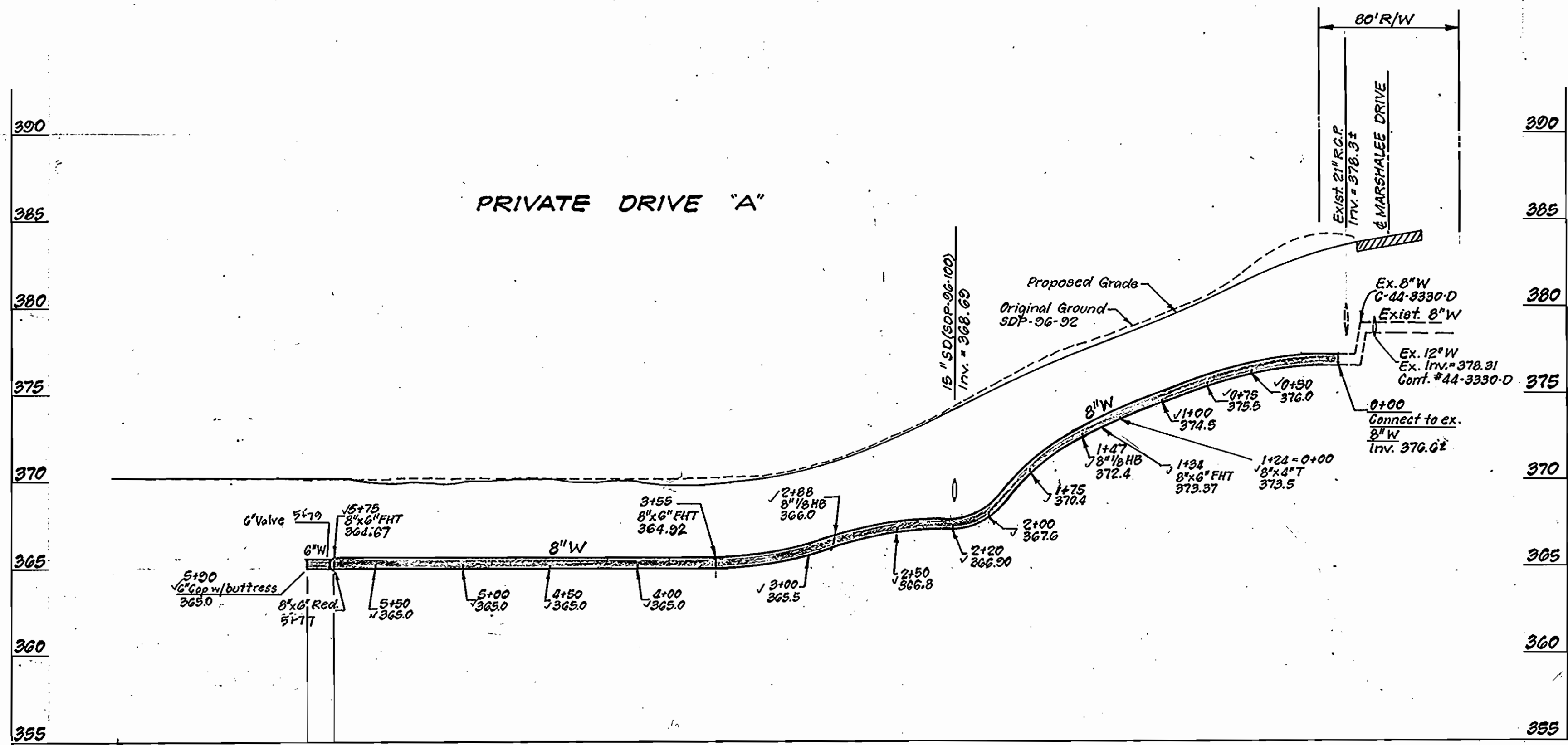
LYNDWOOD SQUARE
PARCEL A-1
1ST ELECTION DISTRICT
HOWARD COUNTY, MARYLAND
CONTRACT No. C-44-3527-D

SCALE:
1"=50'
SHEET
2 OF 3

SQUARE



PROFILES
Scale: HOR: 1"=50'
VER: 1"=5'



DEPARTMENT OF PUBLIC WORKS
HOWARD COUNTY, MARYLAND

R. H. [Signature]
7-11-96
DATE

DEPARTMENT OF PLANNING & ZONING
HOWARD COUNTY, MARYLAND

[Signature]
7/23/96
DATE

CFE CLARK · FINEFROCK & SACKETT, INC.
ENGINEERS · PLANNERS · SURVEYORS
7135 MINSTREL WAY COLUMBIA, MD 21045
(410) 381-7500 BALT. (301) 621-8100 WASH.



DES:	KIWM			
DRN:	KIWM			
CHK:	[Signature]			
DATE:	JUNE 96	BY:	NO.	
REVISION:		DATE:		

PROFILE SHEET
600' SCALE MAP NO. 37 BLOCK NO. 3

LYNDWOOD SQUARE
PARCEL A-1
1ST ELECTION DISTRICT
HOWARD COUNTY, MARYLAND
CONTRACT No. C-44-3527-D

SCALE:
AS SHOWN
SHEET
3 OF 3