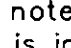


TYPE OF BUILDING	Future Commercial and Residential (SFD, SFA, & MF)
NUMBER OF UNITS	N/A
NUMBER OF SHC's	2
NUMBER OF WHC's	2
DRAINAGE AREA	Middle Patuxent
TREATMENT PLANT	Little Patuxent Water Reclamation Plant, Savage

GENERAL NOTES

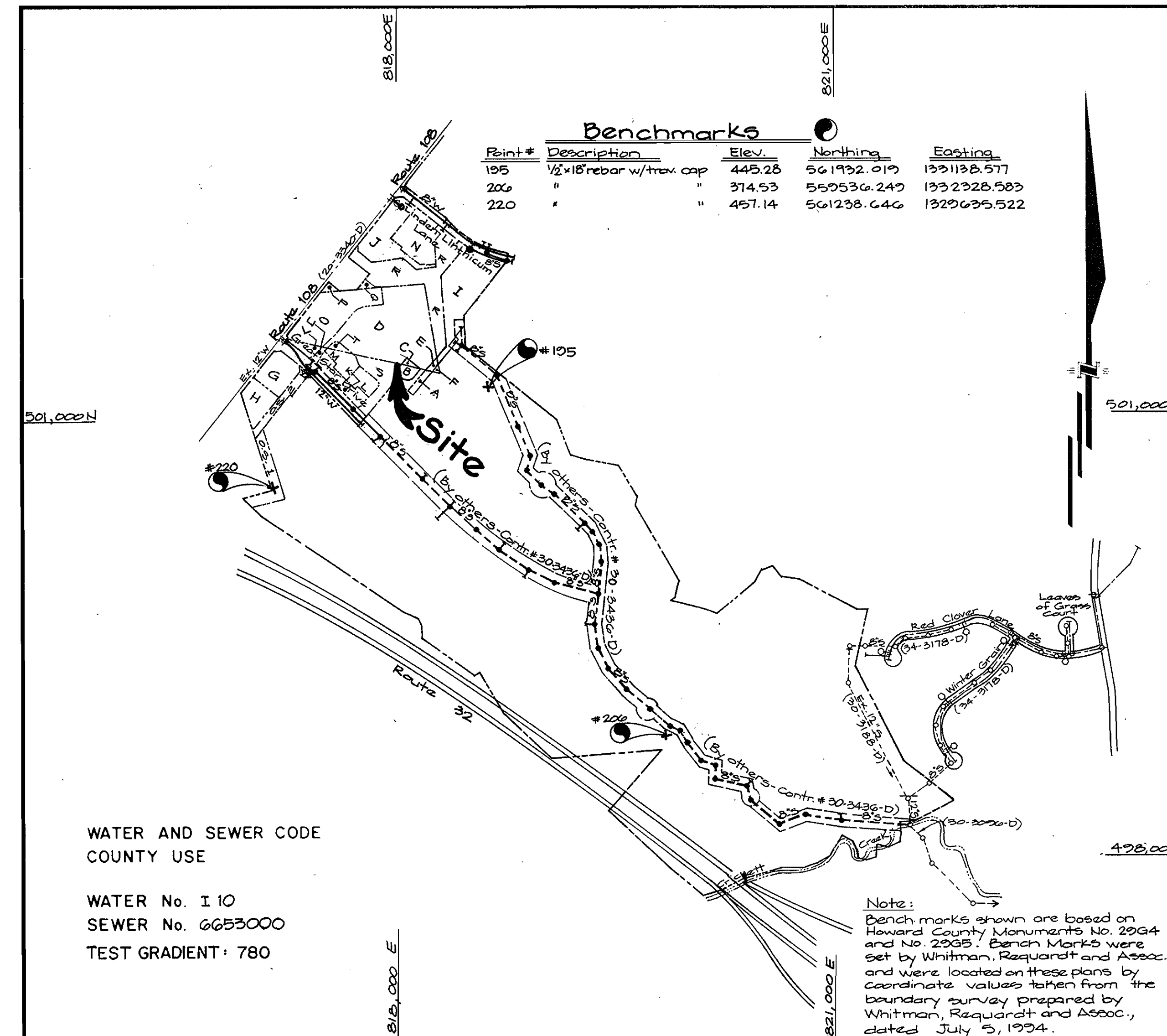
- PART I -**
- Approximate location of existing mains are shown. The contractor shall take all necessary precautions to protect existing mains and services and maintain uninterrupted supply. Any damage incurred shall be repaired immediately to the satisfaction of the Engineer at the Contractor's expense.
 - All horizontal controls are based on Maryland State Coordinates. [North American Datum of 1983 (NAD 83)].
 - All vertical controls are based on U.S.G.S. data.
 - All pipe elevations shown are invert elevations.
 - Clear all utilities by a minimum of 6". Clear all poles by a 2'-0" minimum or tunnel as required. The owner has contacted the utility companies and has made arrangements for bracing of poles as shown on the drawings. In the event the contractor's work requires the bracing of additional poles, any cost incurred by the owner for the bracing of additional poles or damages shall be deducted from money owed the contractor. The contractor shall coordinate with the utility companies to schedule the bracing of the poles.
 - For details not shown on the drawings, and for materials and construction methods, use Howard County Design Manual, Volume IV, Standard Specifications and Detail for Construction (Latest Edition). The contractor shall have a copy of Volume IV on the job.
 - Where test pits have been made on existing utilities, they are noted by the symbol  at the location of the test pit. A note or notes containing the results of the test pit or pits is included on the drawings. Existing utilities in the vicinity of the proposed work for which test pits have not been dug, shall be located by the contractor two weeks in advance of construction operations at his own expense.
 - Contractor shall notify the following utility companies or agencies at least five working days before starting work shown on these plans:

State Highway Administration	531-5533
BC&E Co. Contractor Services	850-4820
BC&E Co. Under Ground Damage Control	787-9068
Miss Utility	1-800-257-7777
Colonial Pipeline Co.	795-1390
Howard County Dept. of Public Works, Bur. of Utilities	313-4900

- Trees and shrubs are to be protected from damage to maximum extent. Trees and shrubs located within the construction strip are not to be removed or damaged by the contractor.
- Contractor shall remove trees, stumps and roots along line of excavation. Payment for such removal shall be included in the unit price bid for construction of the main.
- The Contractor shall notify the Bureau of Highways, Howard County, (410) 313-2450 at least 5 days before any open cut of any county road.

- PART II - WATER**
- All water mains to be D.I.P. Class 52 unless otherwise noted.
 - Tops of all water mains to have a minimum of 3'-1/2' cover unless otherwise noted.
 - Valves adjacent to tees shall be strapped to tees.
 - All fittings shall be buttressed or anchored with concrete in accordance with the Standard Details unless otherwise provided for on the drawings.
 - Fire hydrants shall be set to the bury line elevations shown on the drawings. All fire hydrants shall be strapped and buttressed with concrete in accordance with Standard Details. Soil around the fire hydrant shall be compacted in accordance with Section 1000 and 1005 of the Standard Specifications.
 - The contractor shall not operate any water main valves on the existing water system.
 - All water house connections shall be for inside meter setting unless otherwise noted on plans or in specifications.
 - For sprinkler system for all townhouses or multifamily dwelling units should have a minimum of 1" connection with a 3/4" meter.

- PART III - SEWER**
- All sewer mains shall be DIP, ~~PCP~~, ~~VCPE~~, ~~OSPE~~, ~~ROPE~~ and P.V.C. unless otherwise noted.
 - All manholes shall be 4'-0" inside diameter unless otherwise noted.
 - Force mains shall be D.I.P. only.
 - Manholes shown with 12" and 16" walls are for brick manholes only.
 - Manholes designated W.T. in plan and profile shall have watertight frame and covers, Standard Detail G5.52. Where watertight manhole frame and cover is used, set top of frame 1'-6" above finished grade unless otherwise noted on the drawings.
 - House(s) with the symbol "C.N.S." indicates that the cellar cannot be served.



WATER AND SEWER CODE COUNTY USE
 WATER No. I 10
 SEWER No. 6653000
 TEST GRADIENT: 780

VICINITY MAP
 SCALE: 1" = 600'

CONTRACT NO. 34-3523-D
Village of River Hill
 Section 4, Area 2
 Parcels 'A' Thru 'O' and Lots 1 & 2

HOWARD COUNTY, MARYLAND
DEPARTMENT OF PUBLIC WORKS

ITEMS	QUANTITIES ESTIMATED	AS-BUILT	
		QUANTITIES	TYPE
12" Water	770 L.F.	782	CL 92 R.I.P.
8" Water	1,122 L.F.	1,148	" " " "
6" Water	107 L.F.	104	" " " "
Fire Hydrant & Valve	4 Ea.	3	MUELLER CO.
2" W.H.C.	45 L.F.	40	K-COPPER
FHT. & V. to be removed	2 Ea.		
12" Valves	2 Ea.	2	MUELLER CO.
8" Valves	7 Ea.	7	" " " "
6" Valves	1 Ea.	3	" " " "
3/4" WHC	47 L.F.	48	K-COPPER
8" D.I.P. Sewer	458 L.F.	440	CL 92 R.I.P.
8" Sewer	618 L.F.	697	SDR 35 R.I.P.
6" SHC/DHC	66 L.F.	66	MAYER BROS. INC.
4" Manholes	3 ea./87 v.f.	3	PRECAST
Type 'B' Drop Conn	1 Ea.	1	ATLANTIC STATES

Sediment Control Measures will be implemented in accordance with Section 219 of the Specifications & with Road Construction Plan F 96-89; Drawings 8 thru 14 for Sediment & Erosion Control

REVIEWED FOR HOWARD SOIL CONSERVATION DISTRICT AND MEETS TECHNICAL REQUIREMENT.
 J. G. Wainwright
 SIGNATURE: _____ DATE: 7/24/96

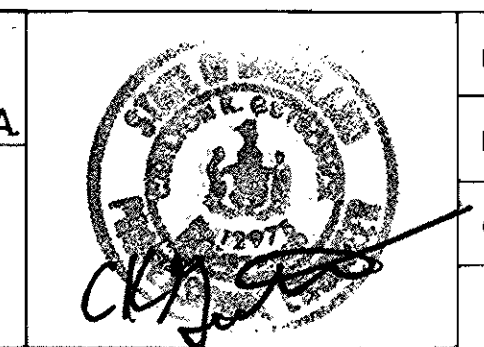
U.S.D.A. NATURAL RESOURCES CONSERVATION SERVICE
 THIS DEVELOPMENT PLAN IS APPROVED FOR SOIL EROSION AND SEDIMENT CONTROL BY THE HOWARD SOIL CONSERVATION DISTRICT

APPROVED:
 John R. Robertson
 HOWARD S.C.D. DATE: 7/24/96

DEPARTMENT OF PUBLIC WORKS
 HOWARD COUNTY, MARYLAND
 Robert B. Bunn
 CHIEF, BUREAU OF UTILITIES
 7-19-96 DATE

DEPARTMENT OF PLANNING & ZONING
 HOWARD COUNTY, MARYLAND
 Chief Development Engineering Division
 7/24/96 DATE

GW GUTSCHICK LITTLE & WEBER, P.A.
 ENGINEERS, PLANNERS, SURVEYORS
 2509 NATIONAL DRIVE SUITE 250 BURTONSVILLE OFFICE PARK
 BURTONSVILLE, MD 20866
 (301) 421-4024



DES: GAH			
DRN: GAH			
CHK: CKG	KLP	Revised Quantities box	12/22/94
DATE: July 1996	KLP	Rev. Parcel Lines & designations in Vicinity Map	9/2/96
BY NO.		REVISION	DATE

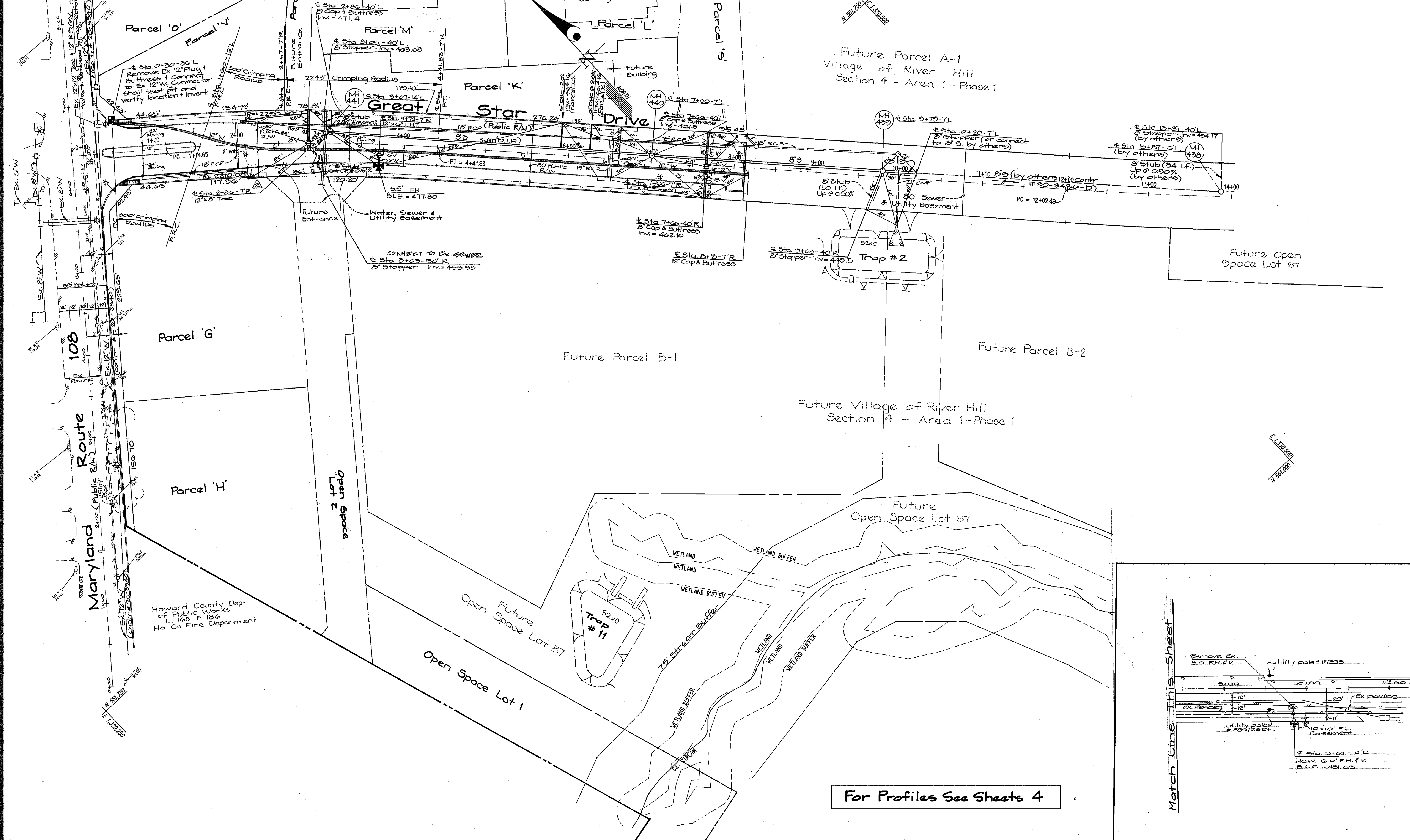
Public Water and Sewer Extension
 Cover Sheet
 Scale: As Shown
 600' SCALE MAP NO. 34 & 35 BLOCK NO. 6 & 12 / 1 & 7

Village of River Hill
 Section 4 - Area 2 - Phase 2
 Great Star Drive & Linden Lithic Road
 Contract No. 34-3523-D
 Ellicott City Election District No. 5 Howard County, Maryland

SCALE AS SHOWN
 SHEET 1 OF 4

(AS-BUILT) 4-3-97

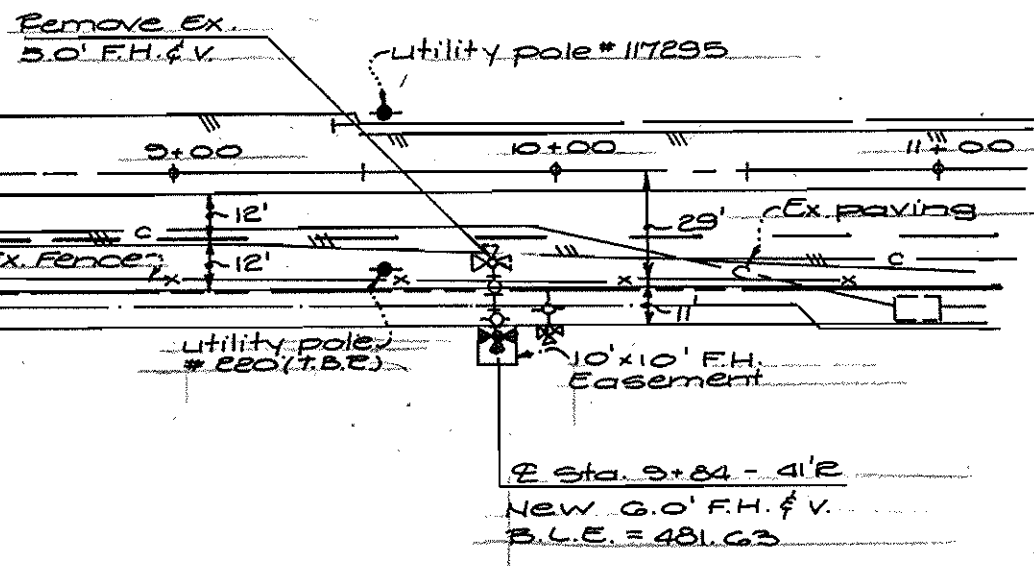
Math Line - This Sheet



Howard County Dept.
of Public Works
L. 105 F. 186
Ho. Co Fire Department

For Profiles See Sheets 4

Match Line This Sheet



DEPARTMENT OF PUBLIC WORKS
HOWARD COUNTY, MARYLAND

John A. Benjamin
Chief, Bureau of Utilities
7-19-96
Date

DEPARTMENT OF PLANNING & ZONING
HOWARD COUNTY, MARYLAND

Chris Vanman
Chief, Development Engineering Division
7/26/96
Date

GLW GUTSCHICK LITTLE & WEBER, P.A.
CIVIL ENGINEERS, SURVEYORS, PLANNERS, LANDSCAPE ARCHITECTS
3909 NATIONAL DRIVE - SUITE 250 - BURTONSVILLE OFFICE PARK - BURTONSVILLE, MARYLAND 20866
TEL: (410) 880-1820 ~ FAX: (301) 421-4186



DES: GAH				
DRN: GAH				
CHK: CKG	Wip	Rev. 2/2/96	2/2/96	2/2/96
DATE: July 1996	KLP	Revised Parcel Lines & Designations	7/2/96	
BY: NO		REVISION	DATE	

WATER AND SEWER PLAN
SCALE: 1" = 50'
600' SCALE MAP NO. 34 & 35, BLOCK NO. 6 & 12, 1&2

VILLAGE OF RIVER HILL
SECTION 4, AREA 2, Phase 2
Great Star Drive and Linden Linthicum Lane
CONTRACT NO.: 34-3523-D
ELLCOTT CITY ELECTION DISTRICT NO. 5
HOWARD COUNTY, MARYLAND

SCALE AS SHOWN
SHEET 2 OF 4

(AS-BUILT) 4-3-97

