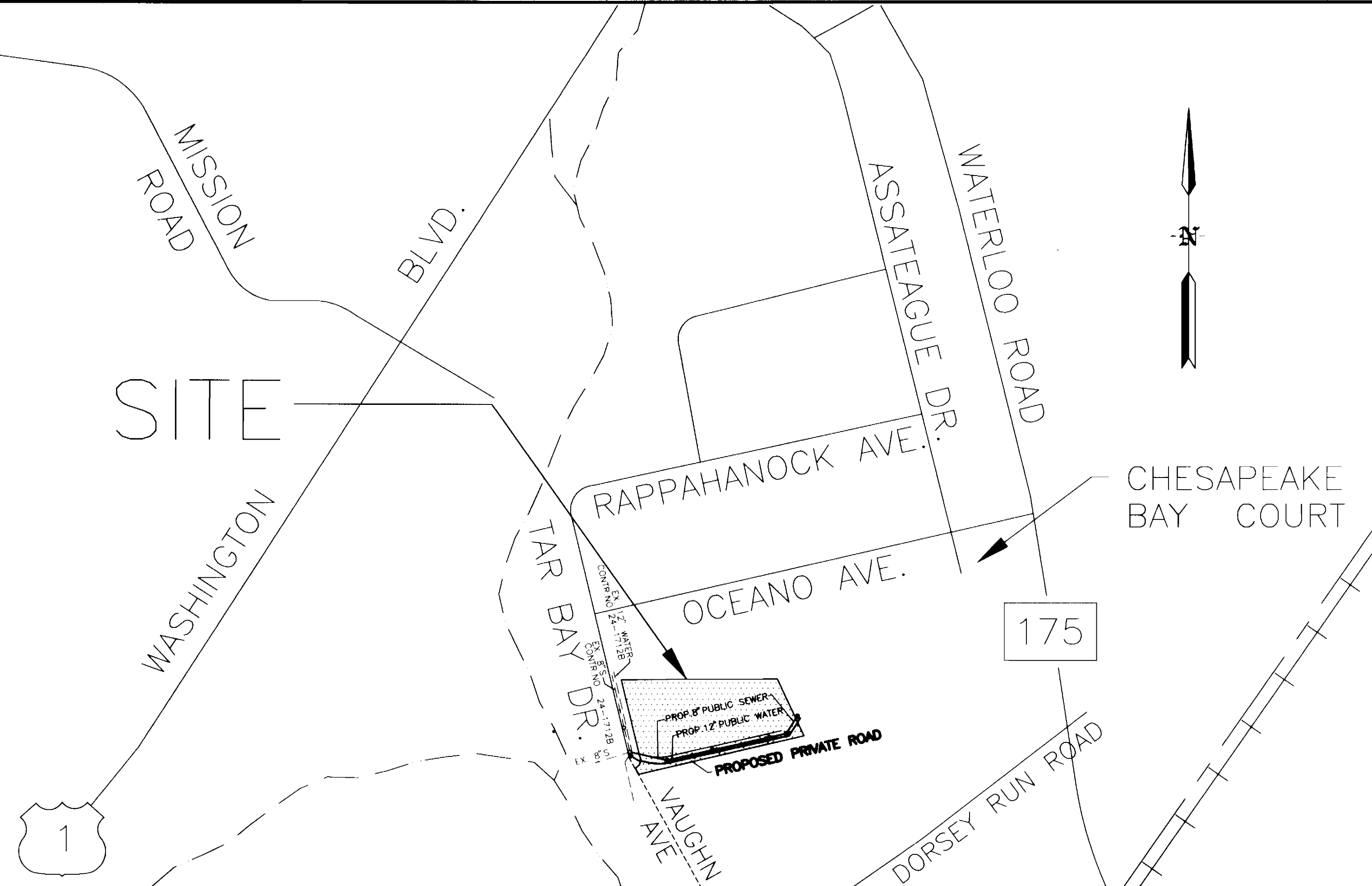


QUANTITIES		AS-BUILT	
ITEMS	QUANTITIES ESTIMATED	QUANTITIES	MANUFACTURER/SUPPLIER
12" W	1107 L.F.	1107 L.F.	D.I.P. ATLANTIC STATES
FIRE HYDRANT	2 EA.	2 EA.	CASTIRON ONE VALVE MUELLER CO.
12" x 12" TS&V	1 EA.	1 EA.	R.P. VAUGHN
8" S	1074 L.F.	1074 L.F.	P.V.C. B.T.I.
4" O' MANHOLE	5 EA.	5 EA.	CONCRETE AMERLENOT PECHOT
10" W	22 L.F.	22 L.F.	D.I.P. ATLANTIC STATES
8" W	20	20	
10" V	1 EA.	1 EA.	CASTIRON ONE VALVE MUELLER CO.
10" V	1	1	
4" P.V.C.	13 L.F.	13 L.F.	P.V.C. B.T.I.
NAME OF UTILITY CONTRACTOR: FERGUSON TRENCHING CO. INC.			
SURVEY AND DRAFTING DIVISION AS-BUILT DATE:			

LOT	WATER AS-BUILTS	TO	DIST.
12" VALVE STA. 0+02	EX. MH-4	12" VALVE	19'
" " " " " " " "	EX. F.H.	" " "	54'
10" VALVE 0+09 OUT OF 12" x 10" STA. 0+69	10" DETECTOR MH	" " "	15'
" " " " " " " "	MH-2	" " "	48'
6" F.H. VALVE 0+02 F.H.I. STA. 7+00	F.H. #1	" " "	13'
" " " " " " " "	10" DETECTOR MH	" " "	137'
8" VALVE 0+09 OUT OF 12" x 10" STA. 0+69	" " "	" " "	16'
6" F.H. VALVE 0+02 F.H.I. STA. 9+58	MH-3	" " "	20'
" " " " " " " "	F.H. #2	" " "	14'
" " " " " " " "	MH-4	" " "	23'



WATER AND SEWER CODE FOR COUNTY USE ONLY	TYPE OF BUILDING	MAINTENANCE GARAGE
WATER No. <u>802</u>	NUMBER OF LOTS	1
SEWER No. <u>3130000</u>	No. OF WATER HOUSE CONNECTIONS	1
	No. OF SEWER HOUSE CONNECTIONS	1
	DRAINAGE AREA	DORSEY
	TREATMENT PLANT	LITTLE PATUXENT WATER RECLAMATION PLANT SAVAGE H.C.

LOCATION MAP
SCALE: 1"=600'

GENERAL NOTES

- PART I - GENERAL
- Approximate locations of existing mains are shown. The contractor shall take all necessary precautions to protect mains and services and maintain uninterrupted supply. Any damage incurred shall be repaired immediately to the satisfaction of the Engineer at the contractor's expense.
 - All horizontal controls are based on Maryland State Coordinates. [North American Datum of 1983 (NAD 83)].
 - All vertical control based on U.S.G.S. data.
 - All pipe elevations shown are invert elevations.
 - Clear all utilities by a minimum of 6". Clear all poles by 2'-0" minimum or tunnel as required. The owner has contacted the utility companies and has made arrangements for bracing of poles as shown on the drawings. In the event that the contractor's work requires the bracing of additional poles, any cost incurred by the owner for bracing of additional poles or damages shall be deducted from money owed the contractor. The contractor shall coordinate with the utility companies to schedule the bracing of the poles.
 - For details not shown on the drawings, and for materials and construction methods, use Howard County Design Manual, Volume IV, Standard Specifications and Details for Construction (Latest Edition). The contractor shall have a copy of Volume IV on the job.
 - Where test pits have been made on existing utilities, they are noted by the symbol at the location of the test pit. A note or notes containing the results of the test pit or pits is included on the drawings. Existing utilities in the vicinity of the proposed work for which test pits have not been dug shall be located by the contractor two weeks in advance of construction operations at his own expense.
 - Contractor shall notify the following utility companies or agencies at least five working days before starting work shown on these plans:

State Highway Administration	531-5533
B&E Co. Contractor Services	850-4620
B&E Co. Under Ground Damage Control	787-9068
Miss Utility	1-800-257-7777
Colonial Pipe Co.	795-1390
Howard County Department of Public Works Bureau of Utilities	313-4900
 - Trees and shrubs are to be protected from damage to maximum extent. Trees and shrubs located within the construction strip are not to be removed or damaged by the contractor.
 - Contractor shall remove trees, stumps and roots along line of excavation. Payment for such removal shall be included in the unit price bid for the construction of the main.
 - The contractor shall notify the Bureau of Highways, Howard County, at (410) 313-2450 at least five working days before any open cut of any County road or boring/picking operation in County roads for laying water/sewer mains or house connections. The approval of the drawings will constitute compliance with DPW requirements per Section 18.114(a) of the Howard County Code.
- PART II - WATER
- All water mains to be D.I.P. Class 52, unless otherwise noted.
 - Tops of all water mains to have a minimum of 3'-1/2" cover, unless otherwise noted.
 - Valves adjacent to trees shall be strapped to trees.
 - All fittings shall be buttressed or anchored with concrete in accordance with the Standard Details, unless otherwise provided for on the drawings.
 - Fire hydrants shall be to the bury line elevations shown on the drawings. All fire hydrants shall be restrained and buttressed with concrete in accordance with Standard Details. Soil around the fire hydrant shall be compacted in accordance with Sections 1000 and 1005 of the Standard Specifications.
 - The contractor shall not operate any water main valves on the existing water system.
 - All water house connections shall be for inside meter setting, unless otherwise noted on plans or in specifications.
 - For sprinkler system for all town homes or multi-family dwelling units shall have a minimum of 1" connection with a 3/4" meter.
- PART III - SEWER
- All sewer mains shall be D.I.P. or P.V.C., unless otherwise noted.
 - All manholes shall be 4'-0" inside diameter, unless otherwise noted.
 - Force mains shall be D.I.P. only.
 - Manholes shown with 12" and 16" walls are for brick manholes only.
 - Manholes designated W.T. in plan and profile shall have watertight frame and covers, Standard Detail G5.52. Where watertight manhole frame and cover is used, set top of frame 1'-6" above finished grade, unless otherwise noted on the drawings.
 - House(s) with the symbol "C.N.S." indicates that cellar cannot be served.

Section 3. Expansion

SEDIMENT CONTROL MEASURES WILL BE IMPLEMENTED IN ACCORDANCE WITH SECTION 219 OF THE SPECIFICATIONS AND WITH SITE DEVELOPMENT PLAN ~~SDP-96102~~ DRAWINGS SEDIMENT AND EROSION CONTROL.

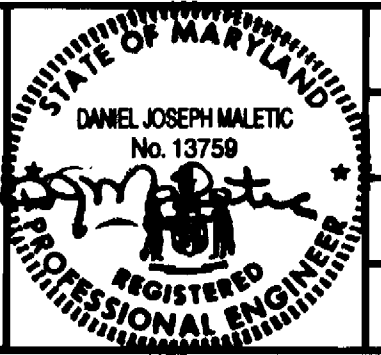
REVIEWED FOR HOWARD SOIL CONSERVATION DISTRICT AND MEETS TECHNICAL REQUIREMENT.
J. H. Warfield / *JHC* 4/9/96
 SIGNATURE DATE
 U.S. SOIL CONSERVATION SERVICE

REVIEWED FOR HOWARD SOIL CONSERVATION DISTRICT AND MEETS TECHNICAL REQUIREMENT.
 APPROVED:
John R. Robertson 4/9/96
 HOWARD S.C.D. DATE

DEPARTMENT OF PUBLIC WORKS
 HOWARD COUNTY, MARYLAND
Robert S. ... 4-4-96
 CHIEF, BUREAU OF UTILITIES DATE

DEPARTMENT OF PLANNING AND ZONING
 HOWARD COUNTY, MARYLAND
[Signature]
 CHIEF, DEVELOPMENT ENGINEERING DIVISION DATE

gpi GREENMAN-PEDERSEN, INC
 ENGINEERS-ARCHITECTS-PLANNERS
 14504 GREENVIEW DRIVE, SUITE 100, LAUREL, MD 20708
 (301) 470-2772, (410) 880-3035

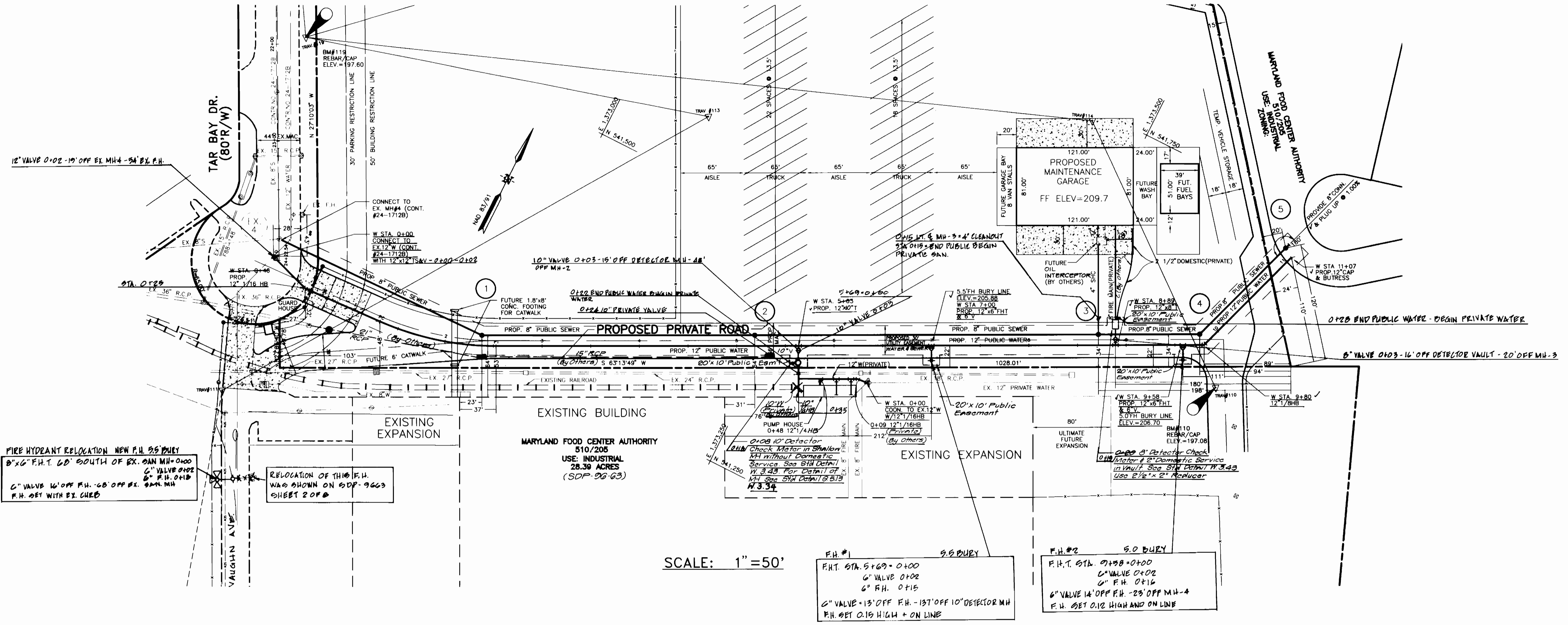


DES: N.B./J.F.	
DRN: N.B.	
CHK: B.B.	
DATE: 3/4/96	

PUBLIC WATER & SEWER
 TITLE SHEET
 600' SCALE MAP NO. 43 BLOCK NO. 21

MARYLAND WHOLESALE FOOD CENTER SECTION 3 BLOCK C, PARCELS E & F
SMELKINSON SYSCO 1996 EXPANSION
CONTRACT 24-3519-D SITE 2
 TAX MAP #3 6th ELECTION DISTRICT HOWARD COUNTY, MARYLAND
 MARCH 4, 1996
 SCALE AS SHOWN
 SHEET 1 OF 3

Sysco 96
Expansion



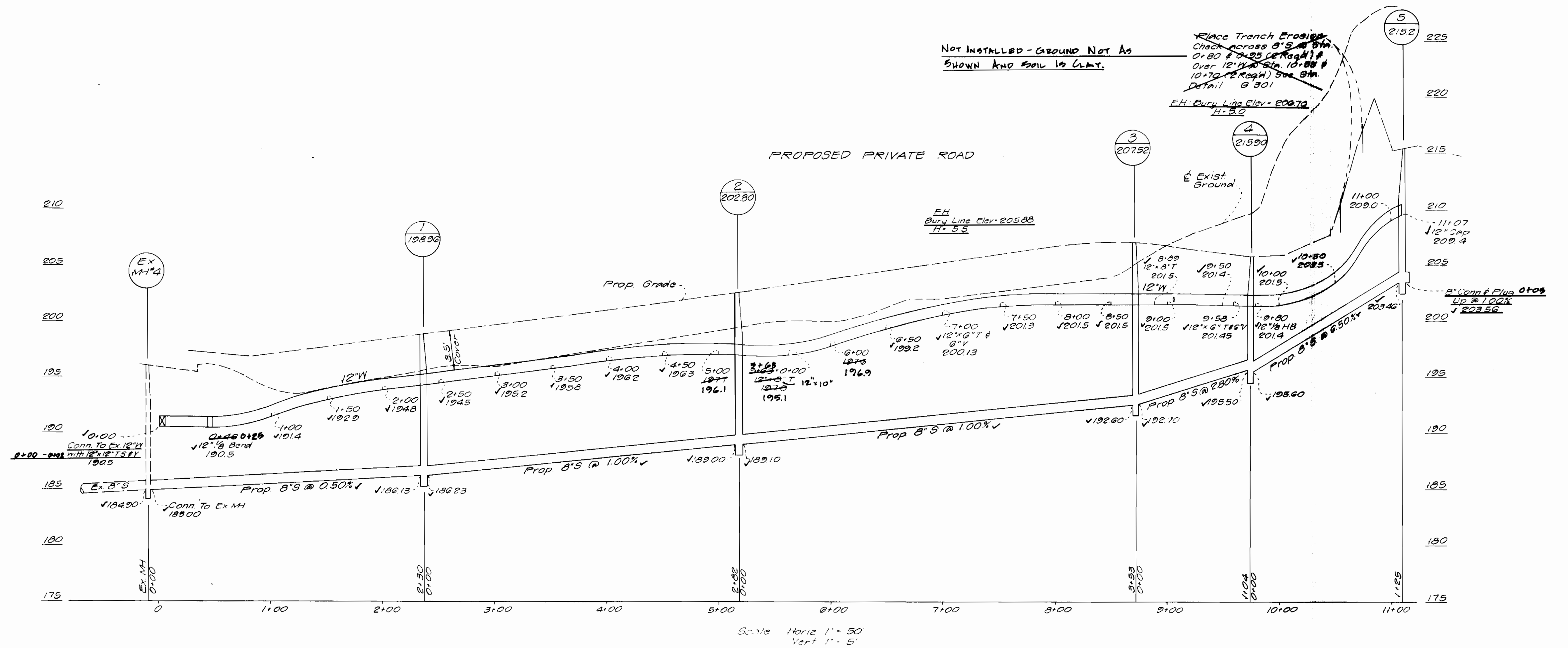
SCALE: 1" = 50'

F.H.#1
F.H.T. STA. 5+69 = 0+00
6" VALVE 0+02
6" F.H. 0+15
6" VALVE 13' OFF F.H. - 137' OFF 10" DETECTOR MH
F.H. SET 0.15 HIGH + ON LINE

F.H.#2
F.H.T. STA. 9+88 = 0+00
6" VALVE 0+02
6" F.H. 0+15
6" VALVE 14' OFF F.H. - 23' OFF MH-4
F.H. SET 0.12 HIGH AND ON LINE

DEPARTMENT OF PUBLIC WORKS HOWARD COUNTY, MARYLAND Robert Berman CHIEF, BUREAU OF UTILITIES DATE: 4-4-96	DEPARTMENT OF PLANNING AND ZONING HOWARD COUNTY, MARYLAND DATE:	gpi GREENMAN-PEDERSEN, INC ENGINEERS-ARCHITECTS-PLANNERS 14504 GREENVIEW DRIVE, SUITE 100, LAUREL, MD 20708 (301) 470-2772, (410) 880-3055	STATE OF MARYLAND DANIEL JOSEPH MALETIC No. 13759 REGISTERED PROFESSIONAL ENGINEER	DES: N.B./J.F. DRN: N.B. CHK: B.B. DATE: 3-4-96	PUBLIC WATER & SEWER PLAN	MARYLAND WHOLESALE FOOD CENTER SECTION 3 BLOCK C, SECTIONS E & F SMELKINSON SYSCO 1996 EXPANSION Contract 24-3519-D SITE 2 TAX MAP #3 6th ELECTION DISTRICT HOWARD COUNTY, MARYLAND MARCH 4, 1996	SCALE AS SHOWN SHEET 2 OF 3
BY NO DATE REVISION DATE					600' SCALE MAP NO. 43 BLOCK NO. 21	N:\PROJECTS\95126\95126.02\DRAWINGS\MDFD-WSB	

Expansion



Scale Horiz 1" = 50'
Vert 1" = 5'

MARYLAND WHOLESALE FOOD CENTER SECTION 3 BLOCK C, SECTIONS E & F

DEPARTMENT OF PUBLIC WORKS HOWARD COUNTY, MARYLAND [Signature] 4-4-96 CHIEF, BUREAU OF UTILITIES	DEPARTMENT OF PLANNING AND ZONING HOWARD COUNTY, MARYLAND [Signature] CHIEF, DEVELOPMENT ENGINEERING DIVISION	gpi GREENMAN-PEDERSEN, INC ENGINEERS-ARCHITECTS-PLANNERS 14504 GREENVIEW DRIVE, SUITE 100, LAUREL, MD 20708 (301) 470-2772, (410) 890-3055		DES: N.B./J.F. DRN: N.B. CHK: B.B. DATE: 3-4-96	PUBLIC WATER & SEWER PROFILE	SMELKINSON SYSCO 1996 EXPANSION SITE 2 CONTRACT 24-3519-D TAX MAP #3 6th ELECTION DISTRICT HOWARD COUNTY, MARYLAND MARCH 4, 1996	SCALE AS SHOWN SHEET 3 OF 3
---	--	--	--	--	------------------------------	---	--------------------------------