

BENCH MARKS:

Ho. Co. Monument # 2645005  
Elev 291.929  
Concrete Monument 0.3' Below Surface  
At Top OF Bank

Ho. Co. Monument # 2645006  
Elev N/A  
Concrete Monument 0.2' Below Surface  
At Top OF Bank

INDEX OF SHEETS	
SHEET NO.	TITLE
1	COVER SHEET
2	PLAN VIEW
3	PROFILES

General Notes:

PART I

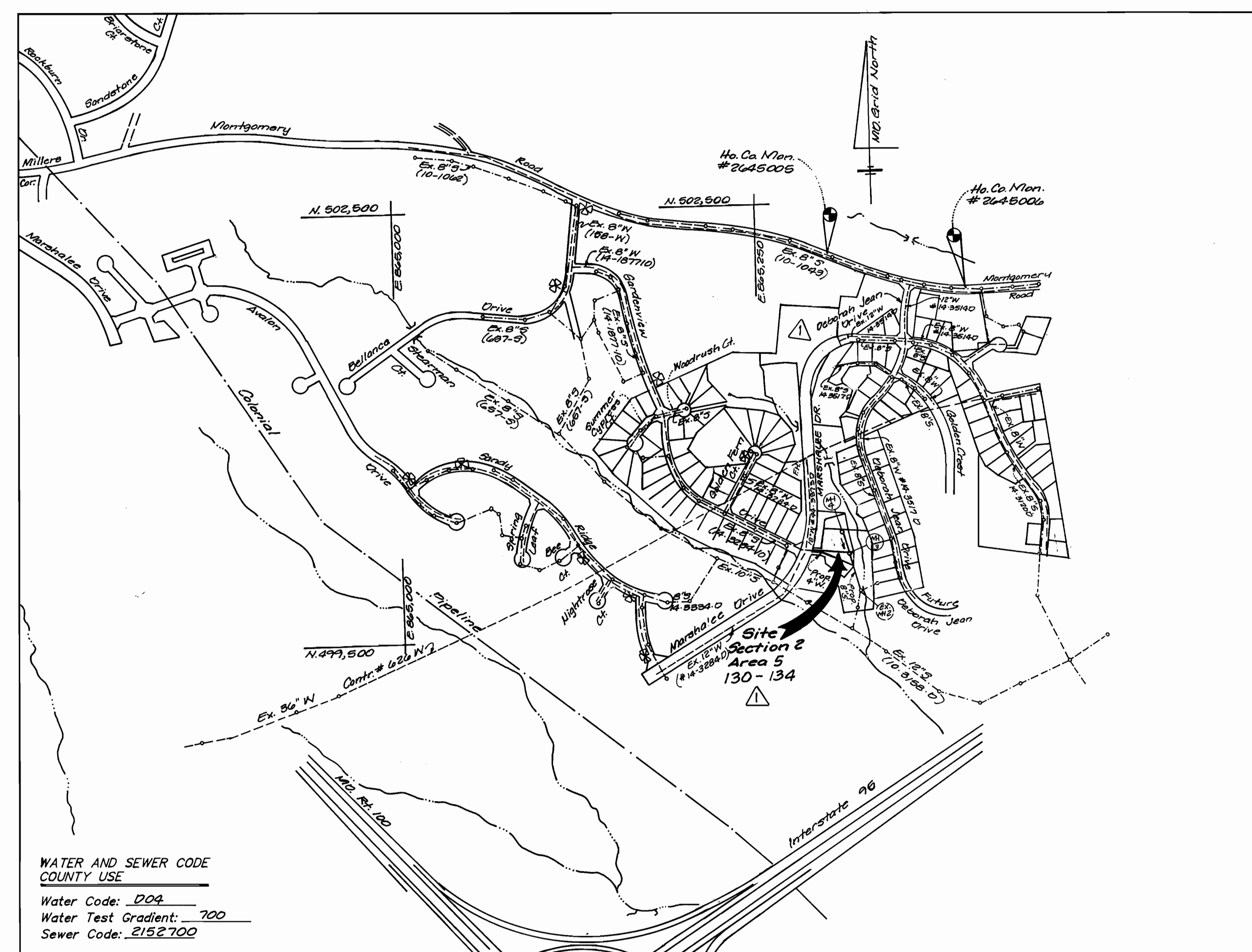
- Approximate location of existing mains are shown. The Contractor shall take all necessary precautions to protect existing mains and services and maintain uninterrupted supply. Any damage incurred shall be repaired immediately to the satisfaction of the Engineer at the Contractor's expense.
- All horizontal controls are based on Maryland State Coordinates.
- All vertical controls are based on U.S.G.S. data.
- All pipe elevations shown are invert elevations.
- Clear all utilities by a minimum of 6". Clear all poles by 2'0" minimum or tunnel as required. The owner has contacted the utility companies and has made arrangements for bracing of poles as shown on the drawings. In the event the Contractor's work requires the bracing of additional poles, any cost incurred by the Owner for bracing of additional poles or damages shall be deducted from money owned the Contractor. The Contractor shall coordinate with the utility companies to schedule the bracing of the poles.
- For details not shown on the drawings and for materials and construction methods, use Howard County Design Manual, Volume IV, Standard Specifications and Details for Construction (latest edition). The Contractor shall have a copy of Volume IV on the job.
- Where test pits have been made on existing utilities, they are noted by the symbol at the location of the test pit. A note or notes containing the results of the test pit or pits is included on the drawings. Existing utilities in the vicinity of the proposed work for which test pits have not been dug shall be located by the Contractor two weeks in advance of construction operations at his own expense.
- Contractor shall notify the following utility companies or agencies at least five (5) working days before starting work shown on these plans:
  - SHA: 531-5533
  - BGE (Contractor Services): 850-4620
  - BGE (Underground damage control): 787-9068
  - Miss Utility: 1-800-257-7777
  - Colonial Pipeline Company: 795-1390
  - Howard County Dept. of Public Works, Bureau of Utilities: 313-4900
- Trees and shrubs are to be protected from damage to maximum extent. Trees and shrubs within the construction strip are not to be removed or damaged by the Contractor.
- Contractor shall remove trees, stumps and roots along line of excavation. Payment for such removal shall be included in the unit price bid for construction of the main.

PART II: WATER

- All water mains to be D.I.P. Class 52 unless otherwise noted.
- Tops of all water mains to have a minimum of 3 1/2' cover unless otherwise noted.
- Valves adjacent to the tees shall be strapped to the tees.
- All fittings shall be buttressed or anchored with concrete in accordance with the Standard Details unless otherwise provided for on the drawings.
- Fire hydrants shall be set to the bury line elevations shown on the drawings. All fire hydrants shall be strapped and buttressed with concrete in accordance with the Standard Details. Soil around the fire hydrant shall be compacted in accordance with Section 1000 and 1005 of the Standard Specifications.
- The Contractor shall not operate any water main valves on the existing water system.
- All water house connections shall be for inside meter setting unless otherwise noted on plans or in specifications.

PART III: SEWER

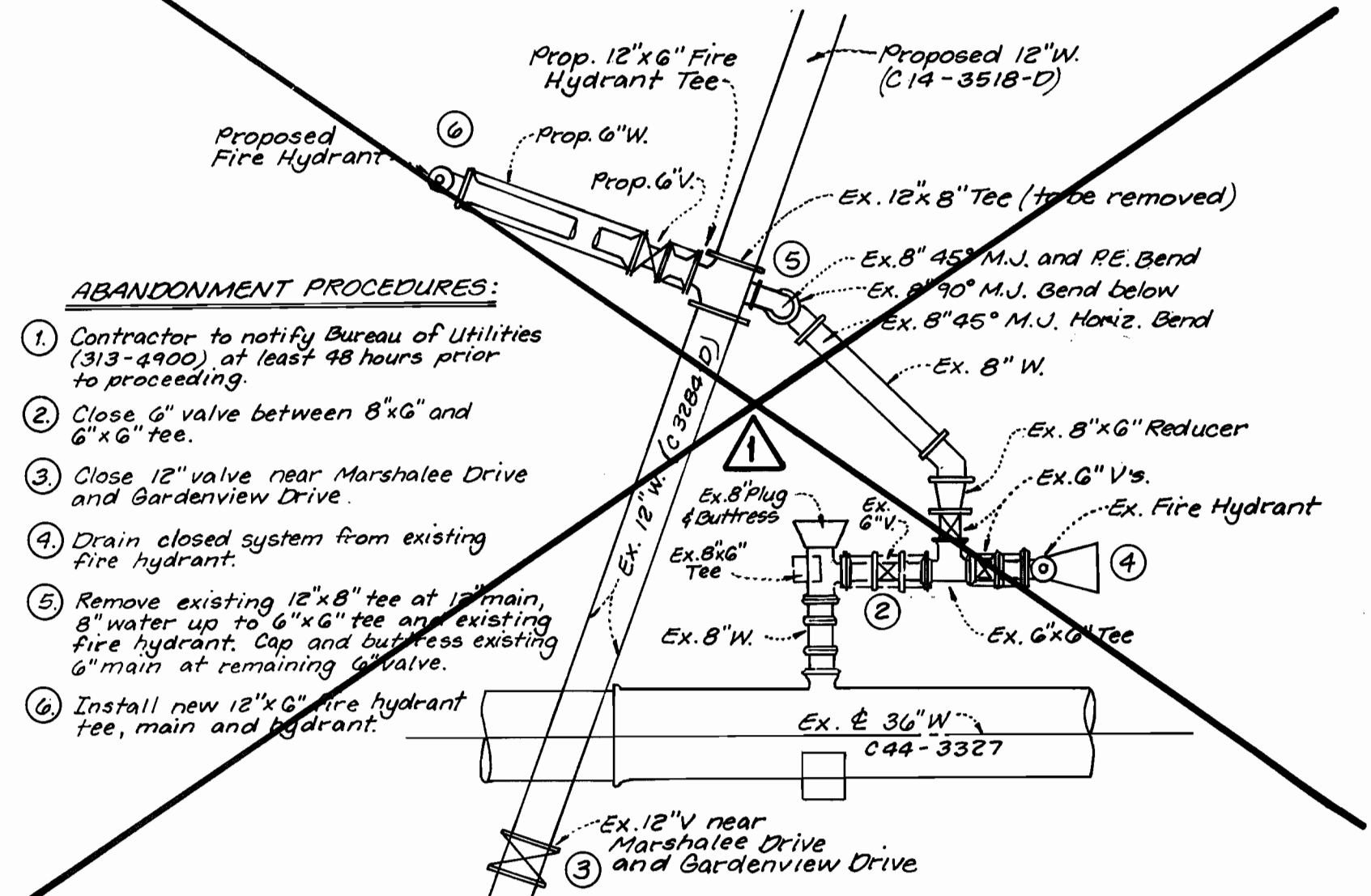
- All sewer mains to be D.I.P. and P.V.C. unless otherwise noted.
- All proposed sewers shall be public.
- All manholes shall be 4'0" inside diameter unless otherwise noted.
- Force mains shall be D.I.P. only.
- Manholes designated W.T. in plan and profile shall have water tight frame and covers; Standard Detail 05.52. Where watertight manhole frame and cover is used, set top of frame 1'6" above finished grade unless otherwise noted on the drawings.
- Houses with the symbol "C.N.S." indicates that cellar cannot be served.
- Manholes shown with 12" and 16" walls are for brick manholes only.



WATER AND SEWER CODE  
COUNTY USE  
Water Code: 204  
Water Test Gradient: 700  
Sewer Code: 2152700

Type of Buildings:	Single Family Detached
Number of Lots/Parcels:	4
Number of W.H.C.'S:	4
Number of S.H.C.'S:	4
Drainage Area:	Deep Run
Treatment Plant:	Patapsco Wastewater Treatment Plant

VICINITY MAP  
Scale: 1"=600'



ABANDONMENT PROCEDURES:

- Contractor to notify Bureau of Utilities (313-4900) at least 48 hours prior to proceeding.
- Close 6" valve between 8"x6" and 6"x6" tee.
- Close 12" valve near Marshalee Drive and Gardenview Drive.
- Drain closed system from existing fire hydrant.
- Remove existing 12"x8" tee at 12" main, 8" water up to 6"x6" tee and existing fire hydrant. Cap and buttress existing 6" main at remaining tee.
- Install new 12"x6" fire hydrant tee, main and hydrant.

**DETAIL**  
PROPOSED 12" WATER TO EXISTING 8" WATER CONNECTION  
(No Scale)

WATER & SEWER CONSTRUCTION PLANS  
MARSHALEE WOODS  
SECTION TWO AREA FIVE  
LOTS 130 - 134

PHASE I  
1st ELECTION DISTRICT HOWARD COUNTY, MARYLAND  
CONTRACT NO. 14-3518-D

QUANTITIES				
AS BUILT				
ITEM	QUANTITIES ESTIMATED	QUANTITIES	TYPE	MANUFACTURER/SUPPLIER
3/4" WHC	32 LF			
4" SHC	82 LF			
8" San.	412 LF			
Manhole	2 Ea.			
4" Water	61 LF			
4" Cap & Buttress	1 Ea.			
6"x4" Reducer	1 Ea.			
1" WHC	20 LF			
1/2" Bend	2 Ea.			
1/2" Bend	1 Ea.			
1/2" Bend	1 Ea.			

REVIEWED FOR HOWARD SOIL CONSERVATION DISTRICT AND MEET TECHNICAL REQUIREMENTS.  
*J.G. Wanfield* /s/ 7/27/94  
Signature Date  
NATURAL RESOURCES CONSERVATION SERVICE

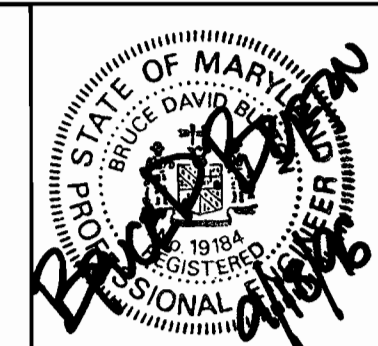
THIS DEVELOPMENT PLAN IS APPROVED FOR SOIL EROSION AND SEDIMENT CONTROL BY THE HOWARD COUNTY SOIL CONSERVATION DISTRICT.  
*[Signature]* 7/27/94  
DATE  
HOWARD SOIL CONSERVATION DISTRICT

SEDIMENT CONTROL MEASURES FOR THIS CONTRACT WILL BE IMPLEMENTED IN ACCORDANCE WITH SECTION 219 OF THE STANDARD SPECIFICATION AND FINAL ROAD CONSTRUCTION PLANS: F96-GG

DEPARTMENT OF PUBLIC WORKS  
*[Signature]* 9-27-96  
DATE  
CHIEF-BUREAU OF UTILITIES

DEPARTMENT OF PLANNING & ZONING  
*[Signature]* 9/30/96  
DATE  
CHIEF-DEVELOPMENT ENGINEERING DIVISION

LDE, INC.  
9250 RUMSEY ROAD, SUITE 106  
COLUMBIA, MARYLAND 21045  
(410) 715-1070 (301) 596-3424

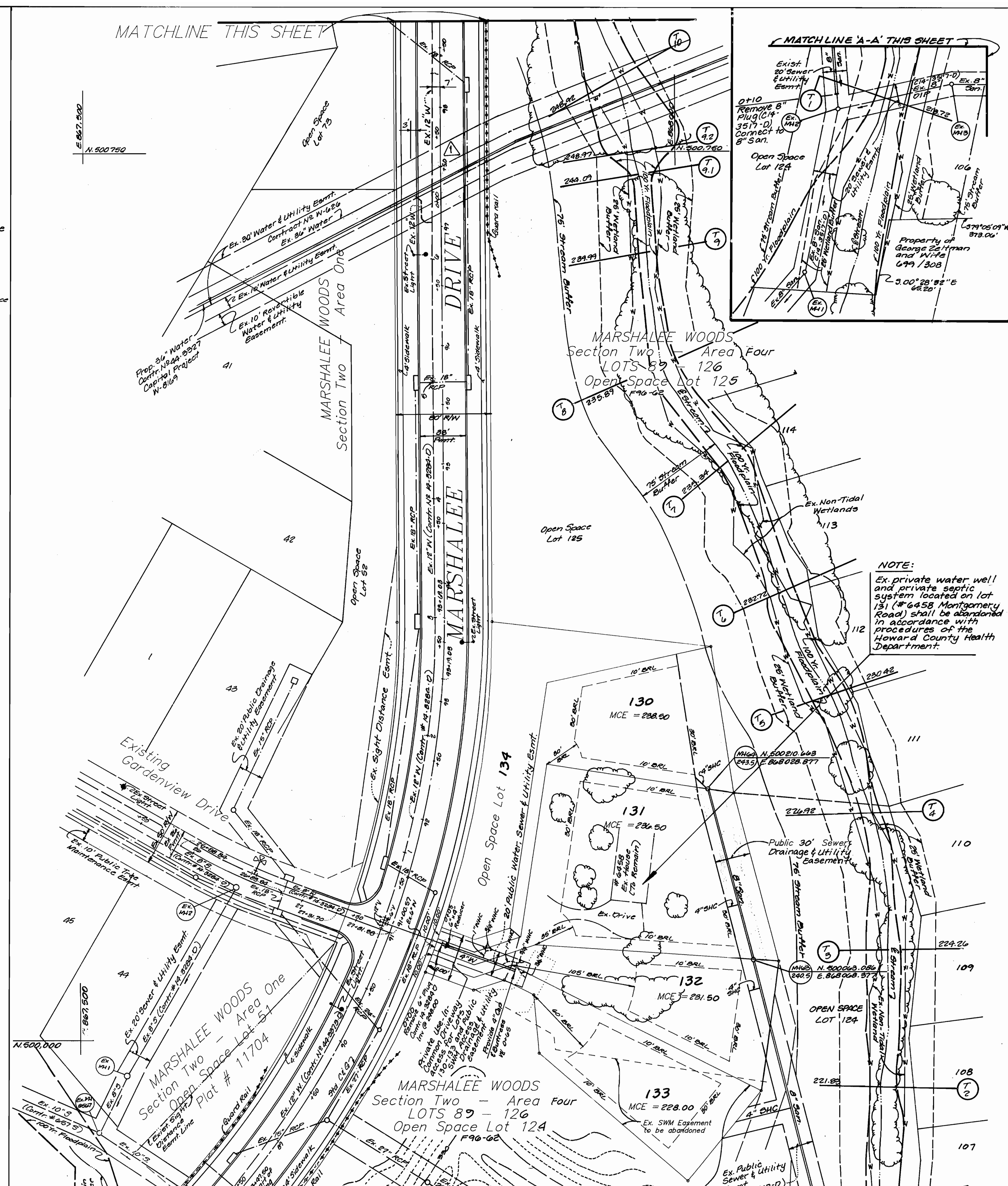
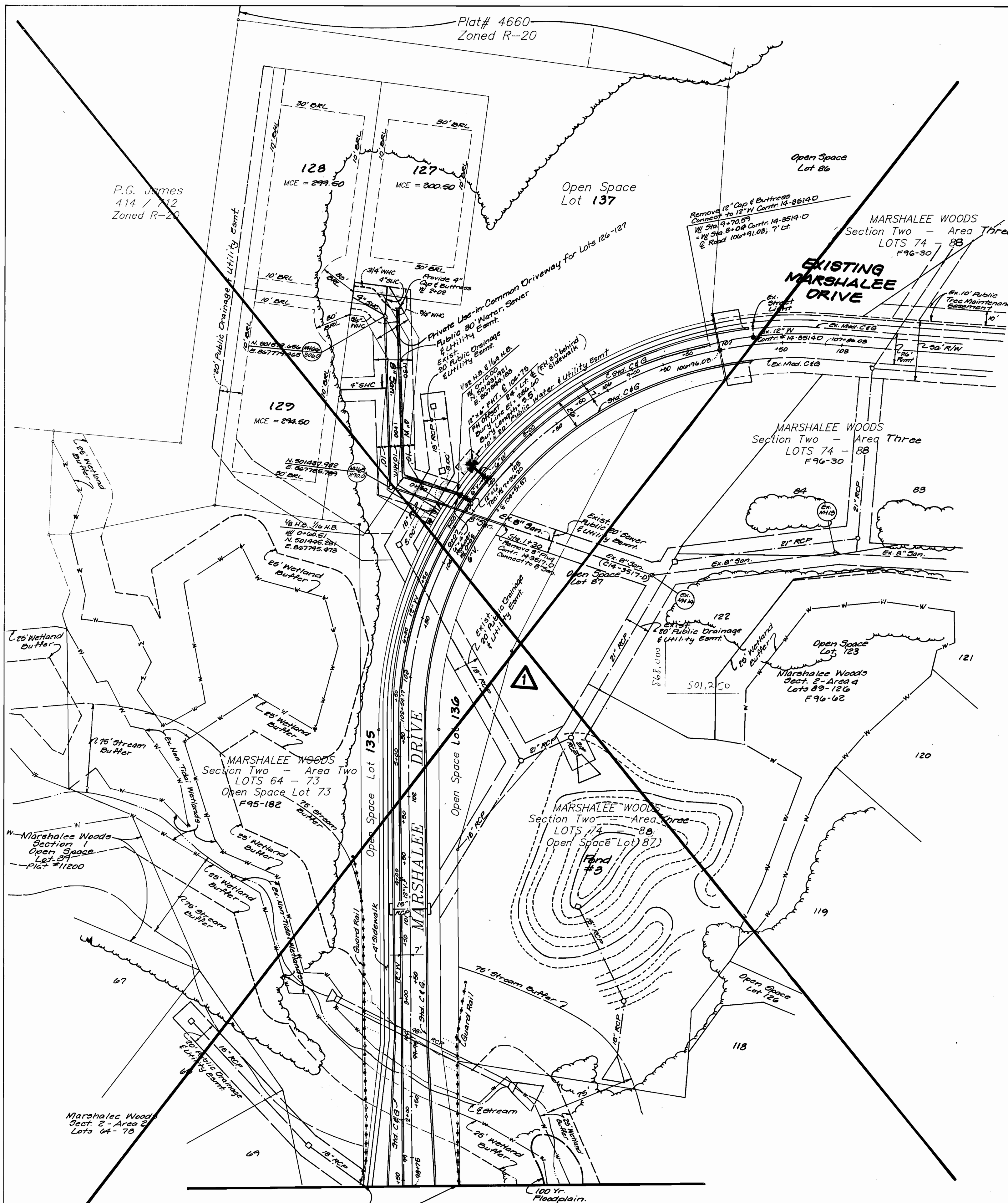


DESIGNED	EDS			
DRAWN	BCI			
CHECKED	BDB			
DATE	6/96			
LDE	BY	NO.	REVISION	DATE
			Remove lots 127-129 From Contract	4/12/00

TITLE SHEET  
600 SCALE MAP NO. 37  
BLOCK 11

MARSHALEE WOODS  
SECTION TWO AREA FIVE  
LOTS 130 - 134  
PHASE I  
1st ELECTION DISTRICT HOWARD COUNTY, MARYLAND  
CONTRACT NO. 14-3518-D

SCALE AS SHOWN  
SHEET 1 OF 3

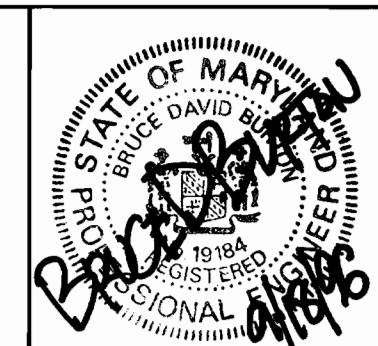


SEDIMENT CONTROL MEASURES FOR THIS CONTRACT WILL BE IMPLEMENTED IN ACCORDANCE WITH SECTION 219 OF THE STANDARD SPECIFICATION AND FINAL ROAD CONSTRUCTION PLANS: F-76-66

DEPARTMENT OF PUBLIC WORKS  
 Robert A. Benjamin  
 CHIEF - BUREAU OF UTILITIES  
 9-27-96  
 DATE

DEPARTMENT OF PLANNING & ZONING  
 [Signature]  
 CHIEF - DEVELOPMENT ENGINEERING DIVISION  
 9/30/96  
 DATE

**LDE, INC.**  
 9250 RUMSEY ROAD, SUITE 106  
 COLUMBIA, MARYLAND 21045  
 (410) 715-1070 (301) 596-3424



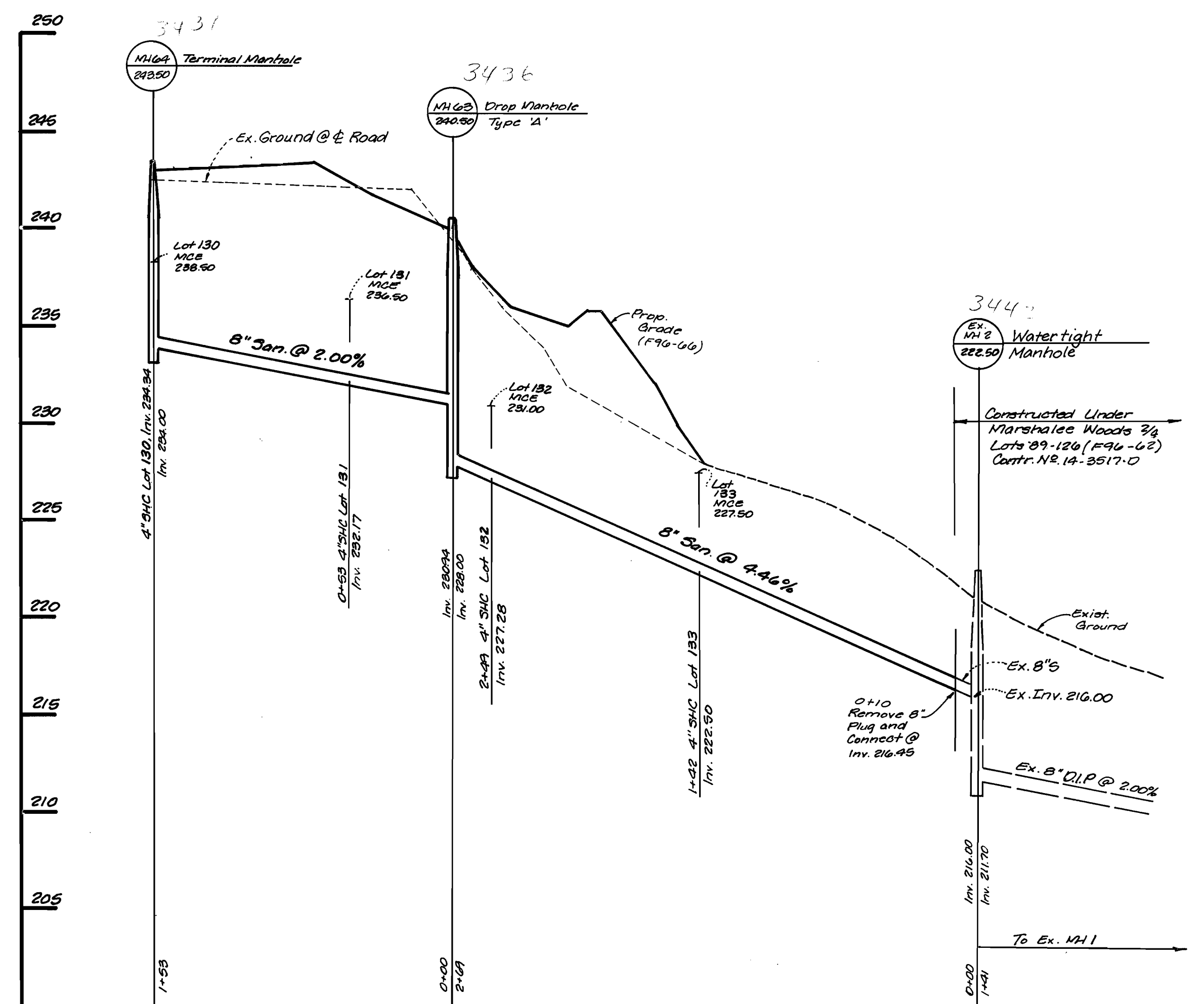
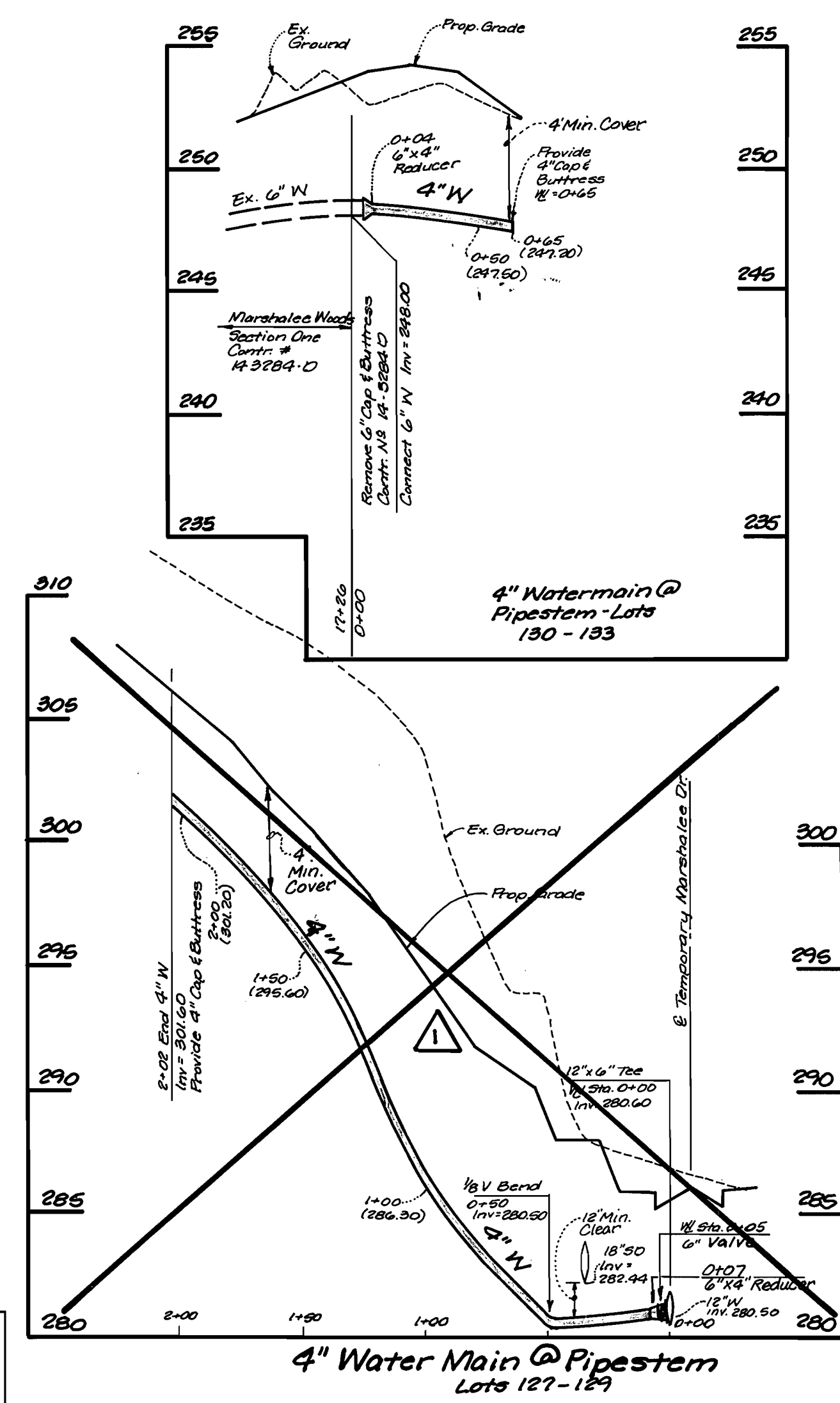
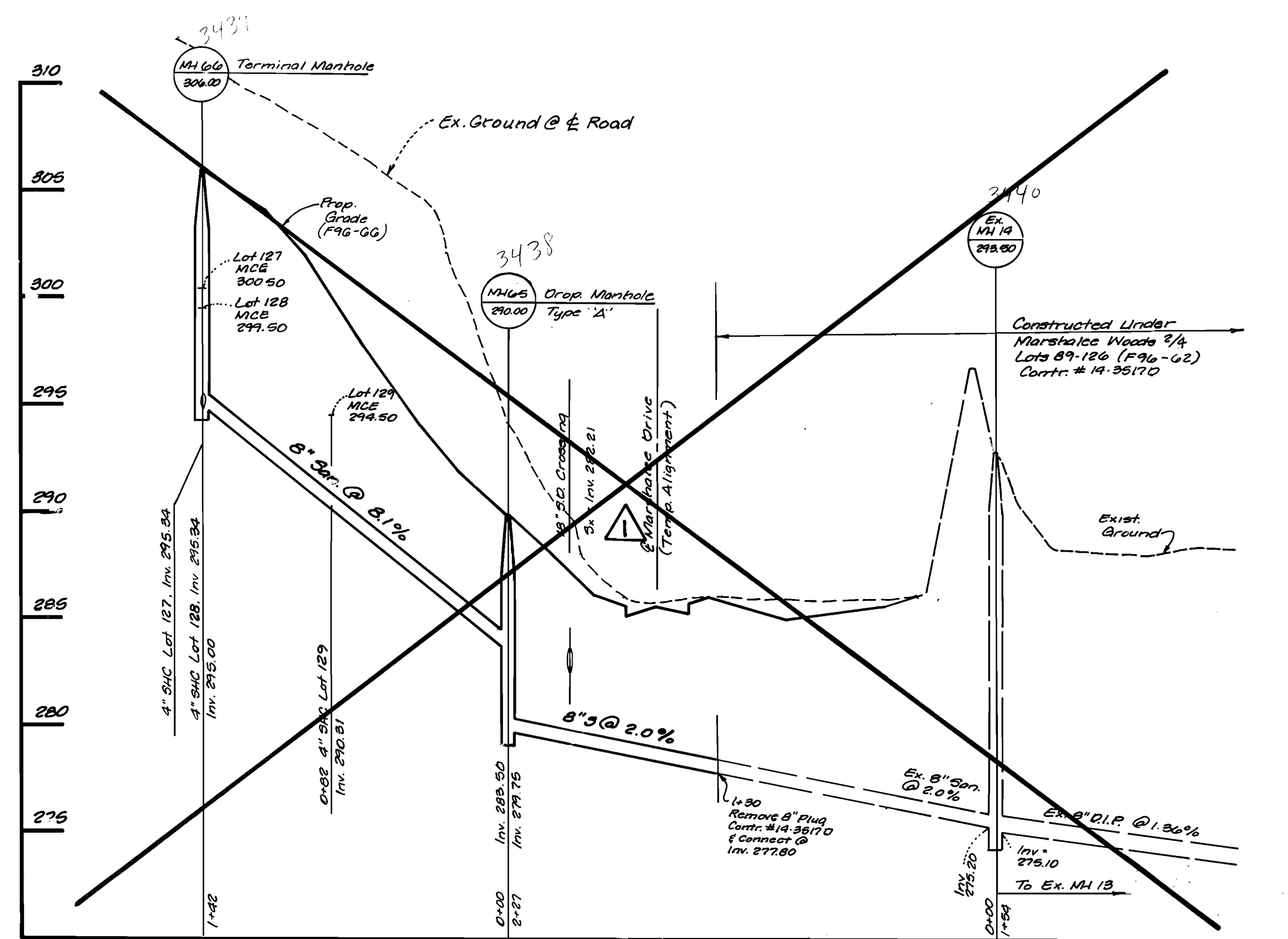
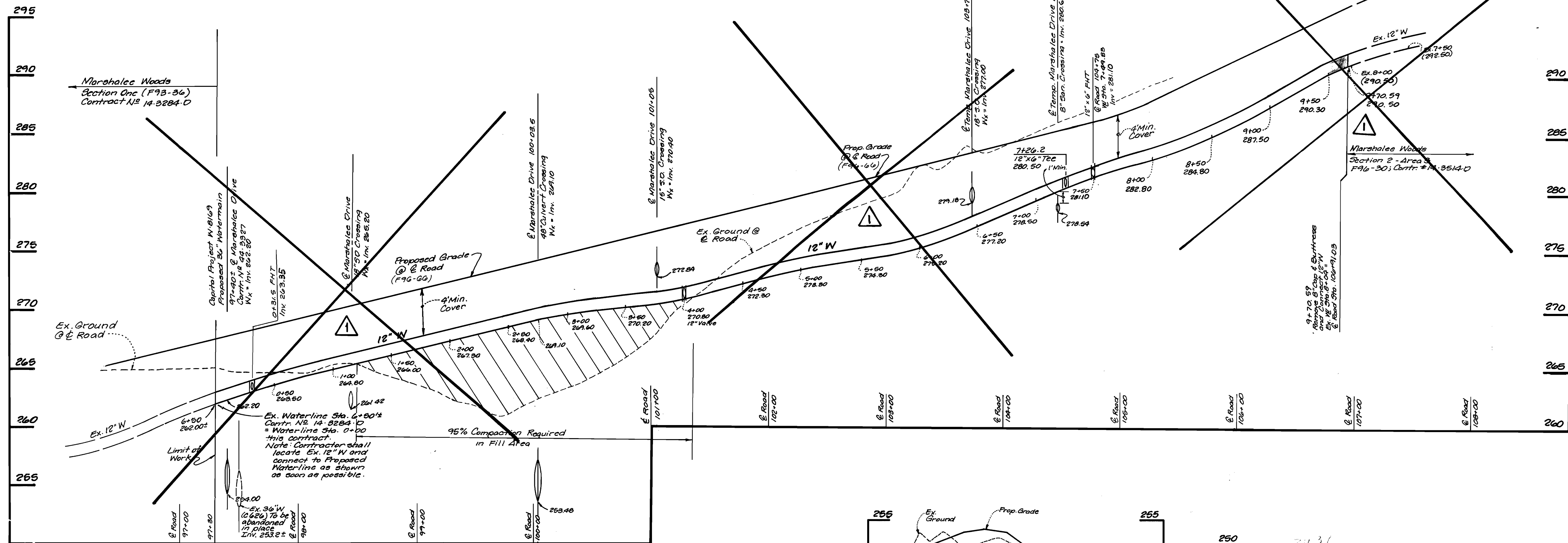
DESIGNED	EDS		
DRAWN	BEI		
CHECKED	BDB		
DATE	5/96		
BY	LDE	Remove Lots 127-129 from Contract	4/12/00
NO.		REVISION	DATE

PLAN  
 600 SCALE MAP NO. 37  
 BLOCK 11

**MARSHALEE WOODS**  
 SECTION TWO - AREA FIVE  
 Δ LOTS 130 - 134 PHASE I  
 1st ELECTION DISTRICT HOWARD COUNTY, MARYLAND  
 Contract No 14-3518-0

SCALE  
 1" = 50'  
 SHEET  
 2 OF 3

MARSHALEE DRIVE



DEPARTMENT OF PUBLIC WORKS DEPARTMENT OF PLANNING & ZONING LDE, INC. 9250 RUMSEY ROAD, SUITE 106 COLUMBIA, MARYLAND 21045 (410) 715-1070 (301) 596-3424	DESIGNED: EDS DRAWN: BC1 CHECKED: BDB DATE: 5/90	PROFILE MARSHALEE WOODS SECTION TWO - AREA FIVE LOTS 130 - 134 PHASE I 1st ELECTION DISTRICT HOWARD COUNTY, MARYLAND Contract No 14-3518-D	SCALE: 1" = 50' SHEET: 3 OF 3
--	---	---	----------------------------------