

SECTION B-B
NO SCALE

SECTION A-A
NO SCALE

PLAN VIEW

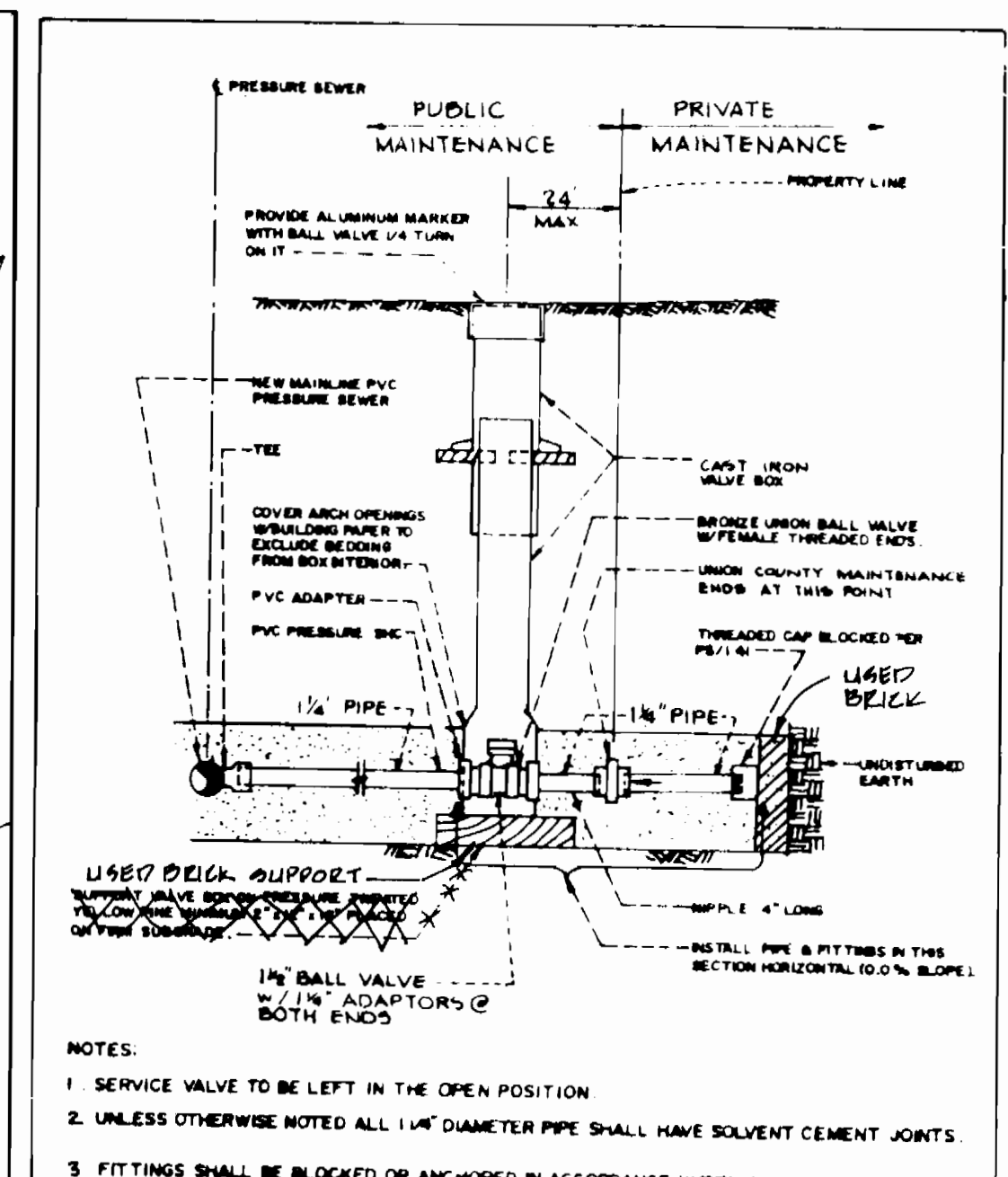
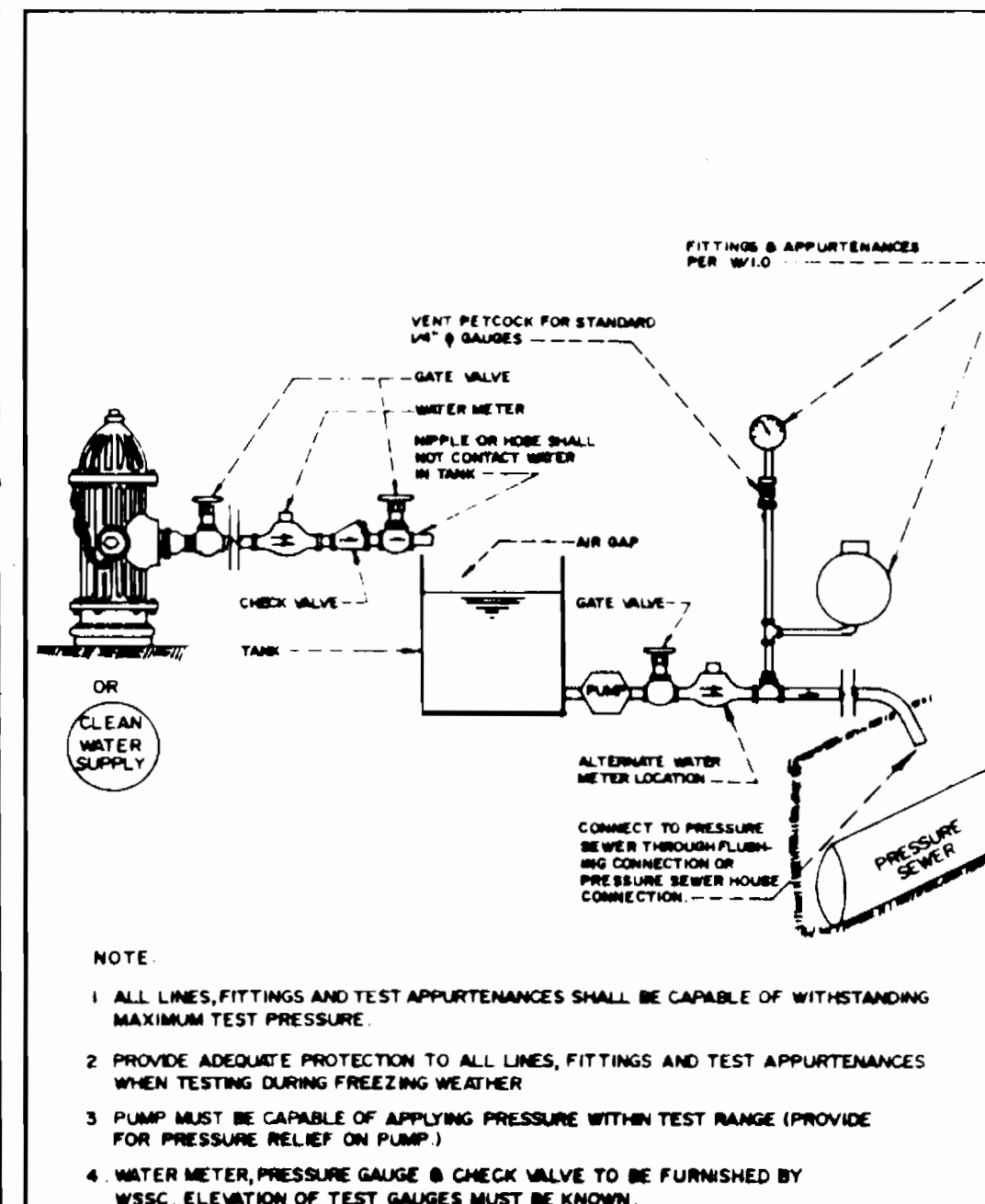
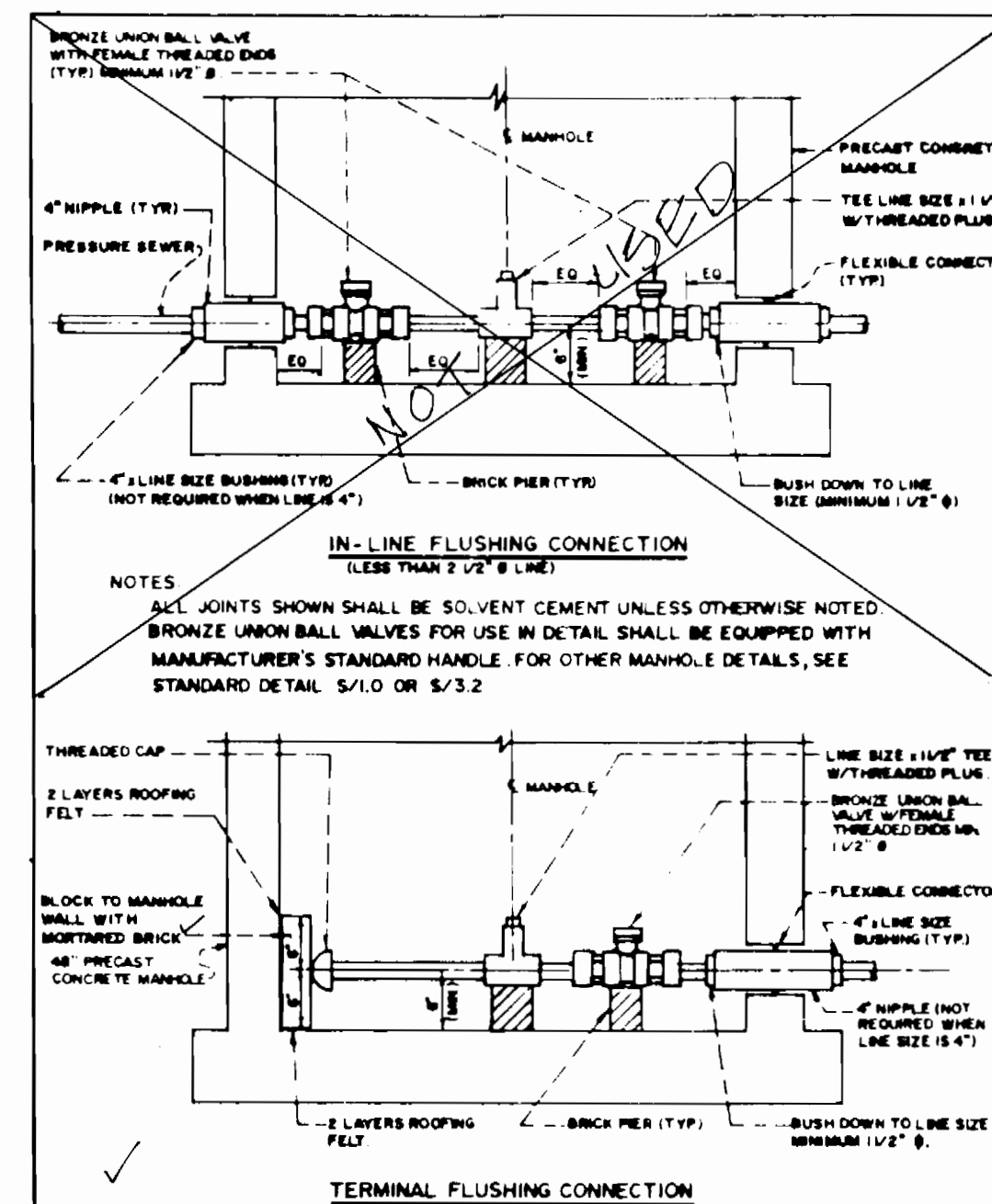
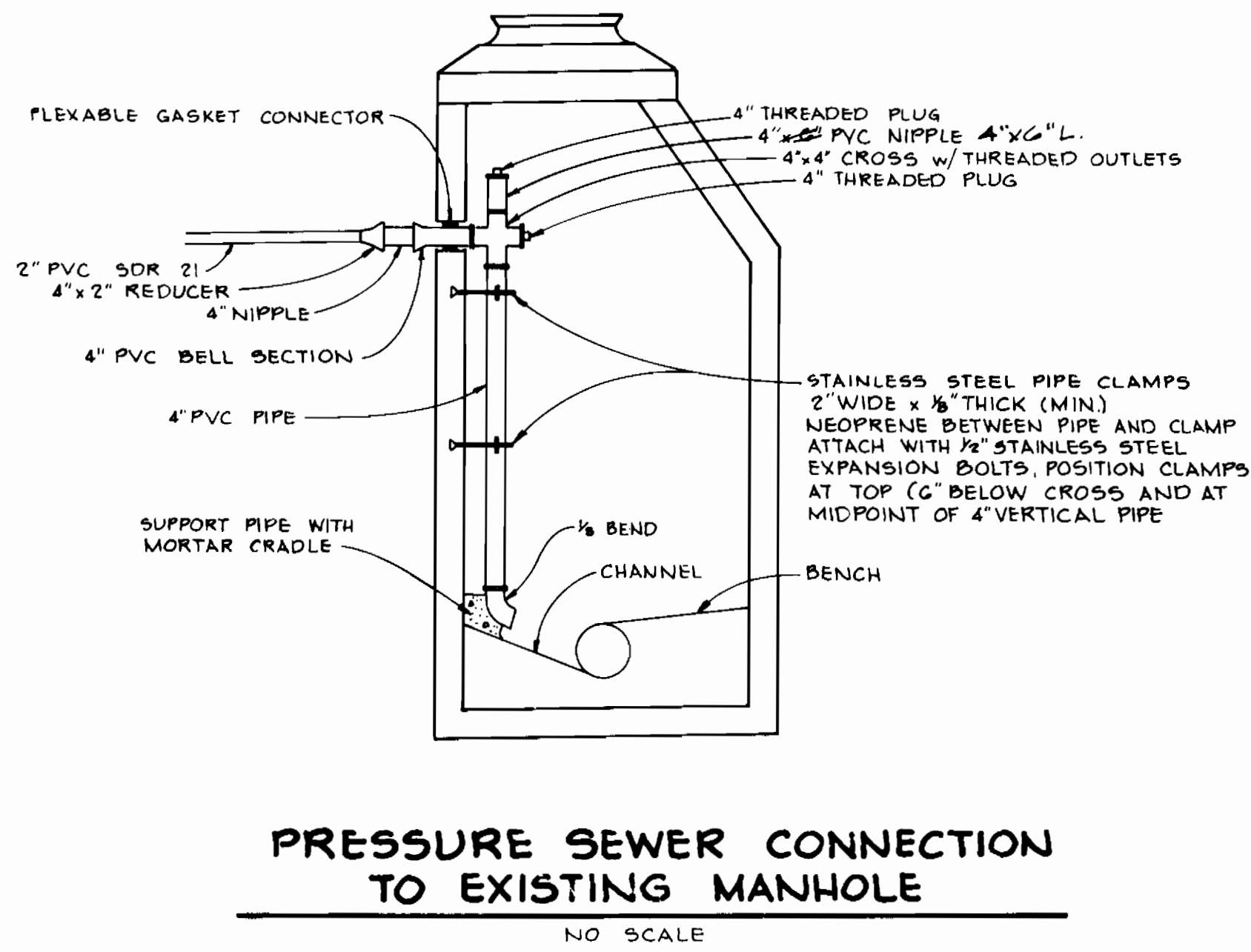
HOUSE CONNECTION TRENCH & BEDDING DETAIL

HOUSE CONNECTION BLOCKING DETAILS FOR CAPS & PLUGS

NOTES

- MINIMUM TRENCH WIDTH AT PIPE SPRINGLINE + 0.0' - 12"
- MAXIMUM TRENCH WIDTH + 30" FOR ALL MAINLINE PRESSURE SEWER
- MAINLINE PRESSURE SEWER TO BE INSTALLED MINIMUM 48" BELOW FINISHED GRADE AND WITH MINIMUM 1'-0" VERTICAL BELOW AND 10'-0" HORIZONTAL CLEARANCE FROM ANY WATER MAIN OR AS INDICATED IN THE DRAWINGS. SEE PS/46 FOR PRESSURE SEWER HOUSE CONNECTION DEPTH AND CLEARANCES.
- MAINLINE PRESSURE SEWER SHALL HAVE MINIMUM CLEARANCE OF 1'-0" BELOW WATER MAIN AT CROSSINGS.
- WHEN CLEARANCES REQUIRED IN NOTES 3 & 4 CANNOT BE MET, ENCASE ALL PRESSURE SEWER JOINTS WITHIN 10' OF WATER MAIN WITH CONCRETE, MIN. 4" THICK & AT LEAST 1' EA. SIDE OF JOINT.

WASHINGTON SUBURBAN SANITARY COMMISSION	APPROVED: <i>[Signature]</i> JAN 1989	STANDARD DETAIL	REVISIONS:	PS
		TRANSITION MANHOLE		4.0



John Bennett

DEPARTMENT OF PUBLIC WORKS
HOWARD COUNTY, MARYLAND

DEPARTMENT OF PUBLIC WORKS
HOWARD COUNTY, MARYLAND

PHOENIX ENGINEERING, INC.
CONSULTING ENGINEERS
817 MAIDEN CHOICE LANE
BALTIMORE, MARYLAND 21228
(410) 247-8833

DES: R.J.W.			
DRN: D.R.B.			
CHK: J.R.H.			
DATE: 12/95	RJW 1	ADDED PRESSURE SEWER CONN DETAIL	5/17/96
	BY NO.	DESCRIPTION	DATE

DETAILS OF WATER & SEWER MAINS

600' SCALE MAP NO. 36 BLOCK NO. 13

HICKORY HEIGHTS PHASE 1
LOTS 1-4
ELECTION DISTRICT 5
CONTRACT NO. 24-3493-D

SCALE: AS SHOWN

DRAWING NO. 2 OF 2

John Bennett 1-3-96
CHIEF, BUREAU OF UTILITIES DATE

John Bennett 1/8/96
CHIEF, DEVELOPMENT ENGINEERING DIVISION DATE