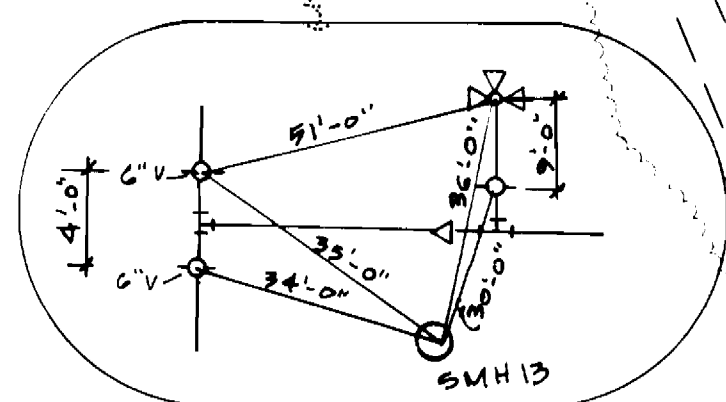


NOTE: The connections for lot 114, 116 have been provided under contract No. 24-54-50-0.



<p>DEPARTMENT OF PUBLIC WORKS HOWARD COUNTY, MARYLAND</p> <p><i>Robert H. Beamin</i> CHIEF, BUREAU OF UTILITIES</p> <p>4-4-96 DATE</p>	<p>DEPARTMENT OF PLANNING AND ZONING HOWARD COUNTY, MARYLAND</p> <p><i>[Signature]</i> CHIEF, DEVELOPMENT ENGINEERING DIVISION</p> <p>4/4/96 DATE</p>	<p>GLW GUTSCHICK LITTLE & WEBER, P.A. CIVIL ENGINEERS, SURVEYORS, PLANNERS, LANDSCAPE ARCHITECTS 3909 NATIONAL DRIVE - SUITE 250 - BURTONSVILLE OFFICE PARK - BURTONSVILLE, MARYLAND 20866 TEL: (410) 880-1820 ~ FAX: (301) 421-4186</p>	<p>DES: DCV DRN: CVT CHK: DCV DATE: 7/95</p> <p>BY: NO REVISION DATE</p>	<p>WATER & SEWER PLAN SCALE: 1" = 50'</p> <p>600' SCALE MAP NO. 23 BLOCK NO.</p>	<p>KINGSBRIDGE @ BURLEIGH MANOR LOTS 763-778 & 785 ELLIOTT CITY ELECTION DISTRICT No. 2 HOWARD COUNTY, MARYLAND CONTRACT #: 24-54-50-0</p> <p>SCALE AS SHOWN SHEET 2 OF 3</p>
--	---	---	--	--	--

AS-BUILT: 4/1/97

