

**GENERAL NOTES**

**PART I :**

1. Approximate location of existing mains are shown. The contractor shall take all necessary precautions to protect existing mains and services and maintain uninterrupted supply. Any damage incurred shall be repaired immediately to the satisfaction of the Engineer at the Contractor's expense.
2. All horizontal controls are based on Maryland State Coordinates.
3. All vertical controls are based on U.S.G.S. data.
4. All pipe elevations shown are invert elevations.
5. Clear all utilities by a minimum of 6". Clear all poles by 2'-0" minimum or tunnel as required. The owner has contacted the Utility Companies and has made arrangements for bracing of poles as shown on the drawings. In the event the contractor's work requires the bracing of additional poles, any cost incurred by the owner for bracing of additional poles or damages shall be deducted from money owed the contractor. The contractor shall coordinate with the Utility Companies to schedule the bracing of the poles.
6. For details not shown on the drawings and for materials and construction methods use Howard County Design Manual, Volume IV, Standard Specifications and Details for Construction (Latest Edition). The contractor shall have a copy of volume IV on the job.
7. Where test pits have been made on existing utilities, they are noted by the symbol  $\odot$  at the location of the test pit. A note or notes containing the results of the test pit or pits is included on the drawings. Existing utilities in the vicinity of the proposed work for which test pits have not been dug shall be located by the contractor two weeks in advance of construction operations at his own expense.
8. Contractor shall notify the following Utility Companies or agencies at least five working days before starting work shown on these plans:
  - State Highway Administration 531 - 5533
  - Baltimore Gas & Electric Company Contractor Services 850 - 4620
  - Baltimore Gas & Electric Company Under Ground Damage Control 787 - 9068
  - Miss Utility 1 - 800 - 257 - 7777
  - Colonial Pipeline Company 795 - 1390
  - Howard County Dept of Public Works Bureau of Utilities 313 - 4900
9. Trees and shrubs are to be protected from damage to maximum extent. Trees and shrubs located within the construction strip are not to be removed or damaged by the contractor.
10. Contractor shall remove trees, stumps and roots along line of excavation. Payment for such removal shall be included in the unit price bid for construction of the main.

**PART II - WATER :**

1. All water mains to be DIP Class 52 unless otherwise noted.
2. Tops of all water mains to have a minimum of 3 1/2' cover unless otherwise noted.
3. Valves adjacent to tees shall be strapped to tees.
4. All fittings shall be buttressed or anchored with concrete in accordance with the Standard Details unless otherwise provided for on the drawings.
5. Fire hydrants shall be set to the bury line elevations shown on the drawings. All fire hydrants shall be strapped and buttressed with concrete in accordance with Standard Details. Soil around the fire hydrant shall be compacted in accordance with Section 1000 and 1005 of the Standard Specifications.
6. The contractor shall not operate any water main valves on the existing water system.
7. All water house connections shall be for inside meter setting unless otherwise noted on plans or in specifications.

**PART III - SEWER :**

1. All sewer mains to be DIP and PVC unless otherwise noted.
2. All manholes shall be 4'-0" inside diameter unless otherwise noted.
3. Force mains shall be DIP only.
4. Manholes designated WT in plan and profile shall have watertight frame and covers. Standard Detail 65-52. Where watertight manhole frame and cover is used, set top of frame 1'-6" above finished grade unless otherwise noted on the drawings.
5. House(s) with the symbol "CNS" indicates that cellar cannot be served.
6. Manholes shown with 12" and 16" walls are for brick manholes only.

**BENCH MARKS:**

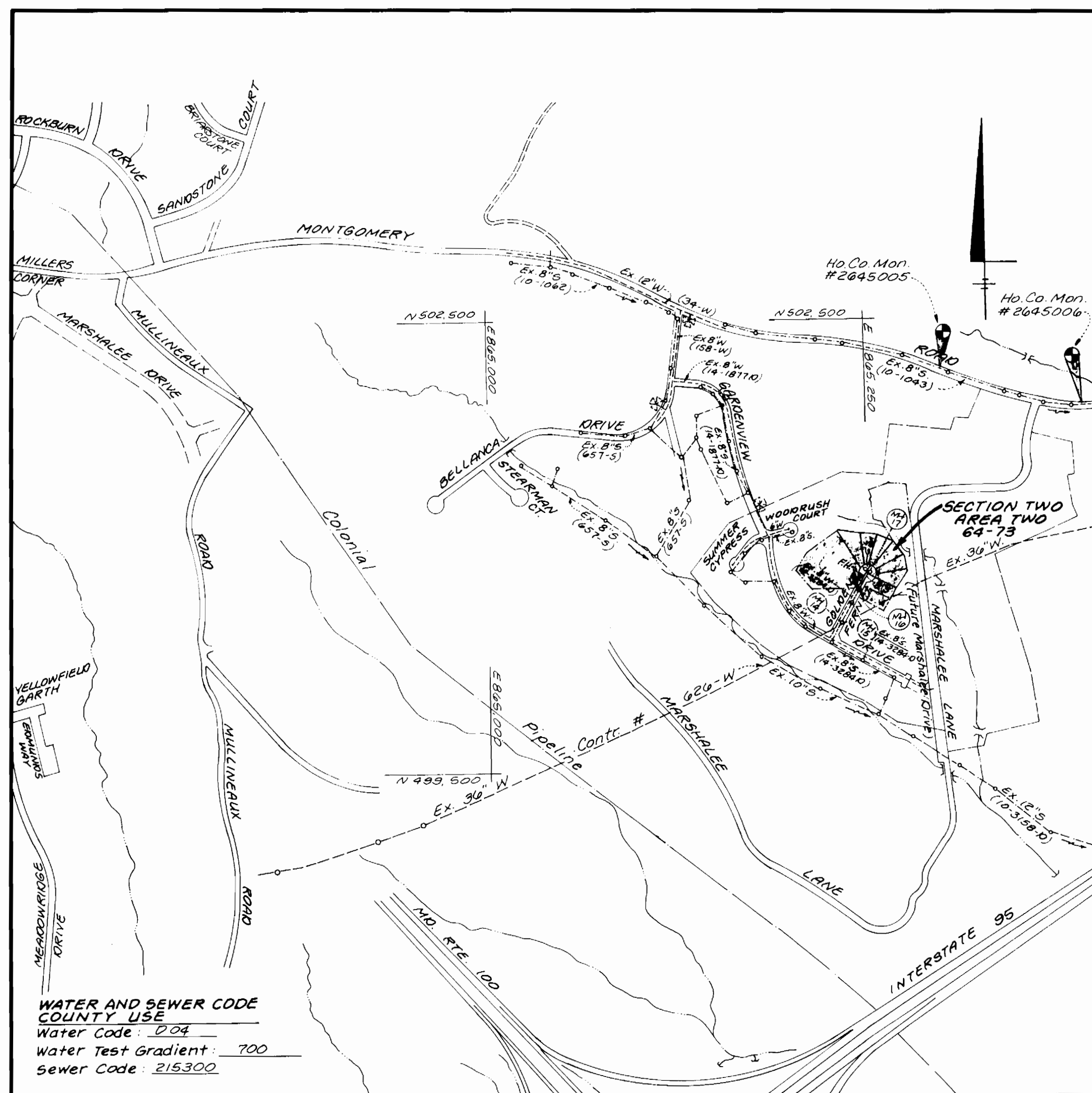
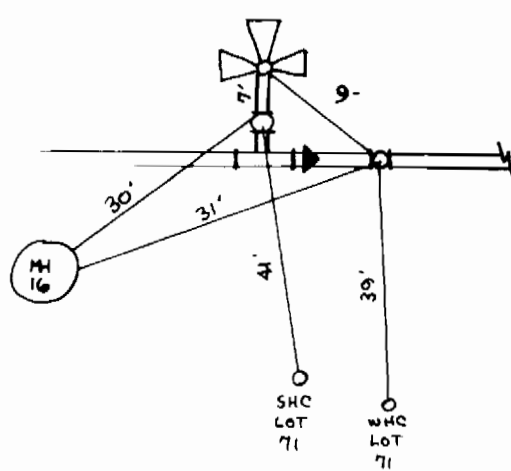
HO. CO. MONUMENT # 2645005 EL. 291.929  
Concrete Monument 0.3' below surface at top of bank.

HO. CO. MONUMENT # 2645006 EL. N/A  
Concrete Monument 0.2' below surface at top of bank.

**AS-BUILTS**

LOT #	SHC'S	WHC'S
64	11' TO WHC 64 72' TO F.H. 73' TO MH 17	64 64' TO F.H. 11' TO SHC 64 80' TO MH 17
65	25' TO WHC 64 16' TO WHC 65 60' TO MH 17	65 30' TO SHC 64 5' TO WHC 66 45' TO MH 17
66	23' TO WHC 66 6' TO WHC 67 25' TO MH 17	66 23' TO SHC 66 29' TO WHC 65 40' TO MH 17
67	27' TO WHC 68 17' TO WHC 67 7' TO MH 17	67 6' TO SHC 64 17' TO SHC 67 23' TO MH 17
68	45' TO WHC 69 17' TO WHC 68 7' TO MH 17	68 17' TO SHC 68 10' TO SHC 69 21' TO MH 17
69	10' TO WHC 68 15' TO WHC 69 30' TO MH 17	69 15' TO SHC 69 61' TO SHC 70 45' TO MH 17
70	99' TO F.H. 16' TO WHC 70 55' TO MH 17	70 72' TO WHC 69 15' TO SHC 70 50' TO MH 17
71	45' TO F.H. 10' TO WHC 71 30' TO MH 16	71 10' TO SHC 71 48' TO F.H. 49' TO MH 16

6" VALVES (2)



**WATER AND SEWER CODE COUNTY USE**

Water Code: 004  
Water Test Gradient: 700  
Sewer Code: 215300

Type of Building:	Single Family Detached
Number of Lots/Parcels:	10 (9 Buildable - 10.5)
Number of W.H.C.'s:	8
Number of S.H.C.'s:	8
Drainage Area:	Deep Run
Treatment Plant:	Patapsco Wastewater Treatment Plant

**VICINITY MAP**  
SCALE: 1" = 600'

**WATER & SEWER CONSTRUCTION PLANS**

**MARSHALEE WOODS**

**SECT. TWO AREA TWO LOTS 64-73**

1st ELECTION DISTRICT

HOWARD COUNTY, MARYLAND

CONTRACT No. 14-3488-D

QUANTITIES				
ITEM	QUANTITIES ESTIMATED	AS BUILT		
		QUANTITIES	TYPE	MANUFACTURER / SUPPLIER
8" Water	42 LF	60 LF	DIP	ATLANTIC STATES
6" Water	113 LF	98 LF	DIP	"
6" Valve	2 EA	2 EA	MUELLER	MUELLER
8"x6" Reducer	1 EA	1 EA	DIP	UNION FOUNDRY
8"x6" FHT	1 EA	1 EA	DIP	"
Manhole	1 EA	1 EA	PRECAST	ATLANTIC
Fire Hydrant	1 EA	1 EA		AMC DARLING
8" S (DIP)	150 LF	150 LF	DIP	ATLANTIC STATES
Terminal MH	1 EA	1 EA	PRECAST	ATLANTIC
4" SHC	194 LF	284 LF	DIP	ATLANTIC STATES
1" WHC	58 LF	57 LF	TYPE "K" COPPER	CANADIAN COPPER
3/8" WHC	130 LF	172 LF	"	"

NAME OF CONTRACTOR: UTILITIES UNLIMITED, INC.

CHECK BOX: SURVEY & DRAFTING DIV. AS BUILT DATE

REVIEWED FOR HOWARD SOIL CONSERVATION DISTRICT AND MEETS TECHNICAL REQUIREMENTS  
Signature: Patricia Engle  
DATE: 4/7/95

THIS DEVELOPMENT PLAN IS APPROVED FOR SOIL EROSION AND SEDIMENT CONTROL BY THE HOWARD COUNTY SOIL CONSERVATION DISTRICT.  
Signature: W. P. Roberts  
DATE: 4/7/95

SEDIMENT CONTROL MEASURES FOR THIS CONTRACT WILL BE IMPLEMENTED IN ACCORDANCE WITH SECTION 219 OF THE STANDARD SPECIFICATION AND FINAL ROAD CONSTRUCTION PLANS: F95-182

DEPARTMENT OF PUBLIC WORKS

DEPARTMENT OF PLANNING AND ZONING

LDE INC.

3250 RUMSEY ROAD  
UNIT # 106  
COLUMBIA, MARYLAND 21045  
PHONE: (410) 715-1070

Designed EIOS

Drawn MBW

Checked BOB

Date June, 1995

By	H.C. 1	AS-BUILT CONDITIONS ADDED TO PLAN	2/13/95
REVISION			

TITLE SHEET

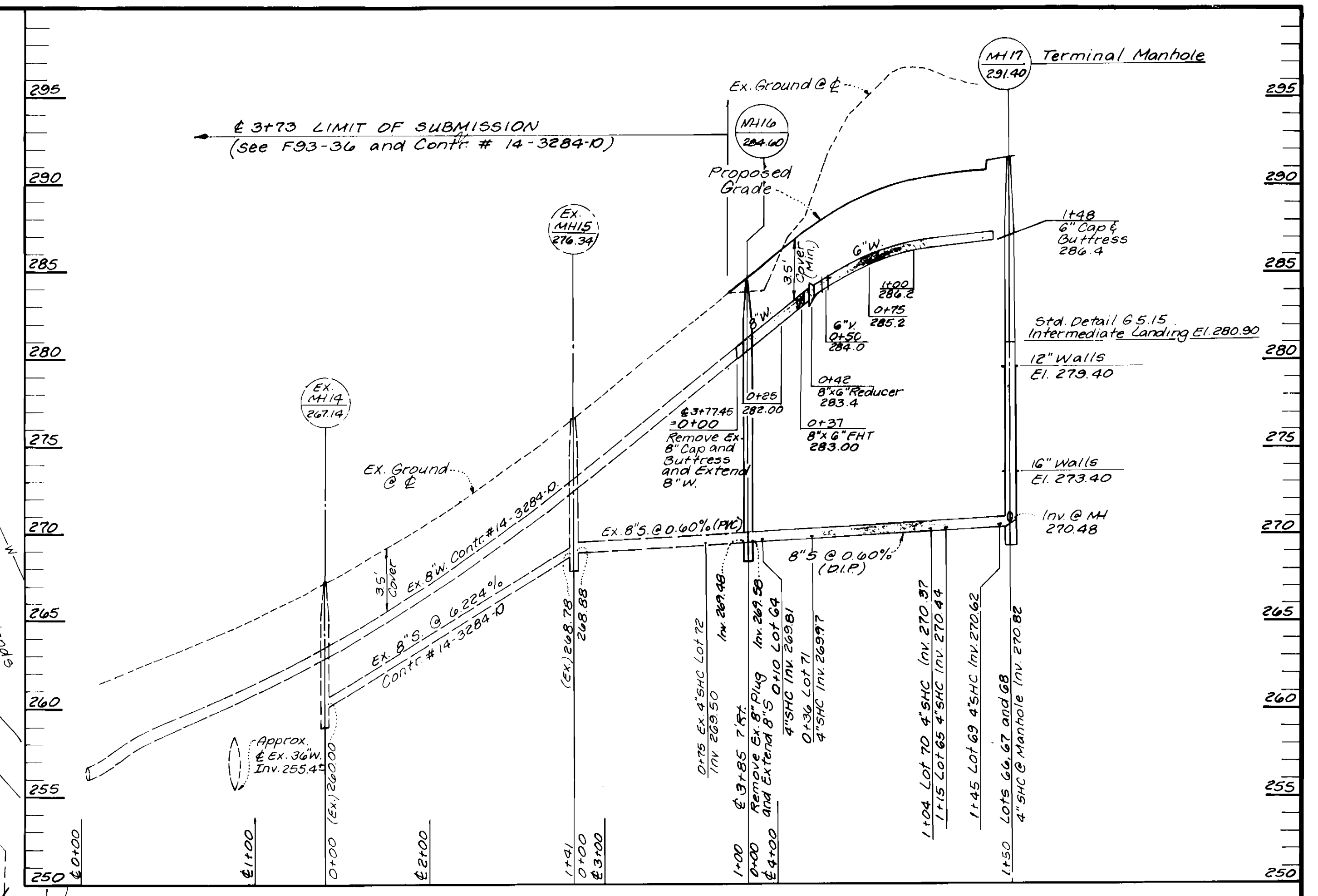
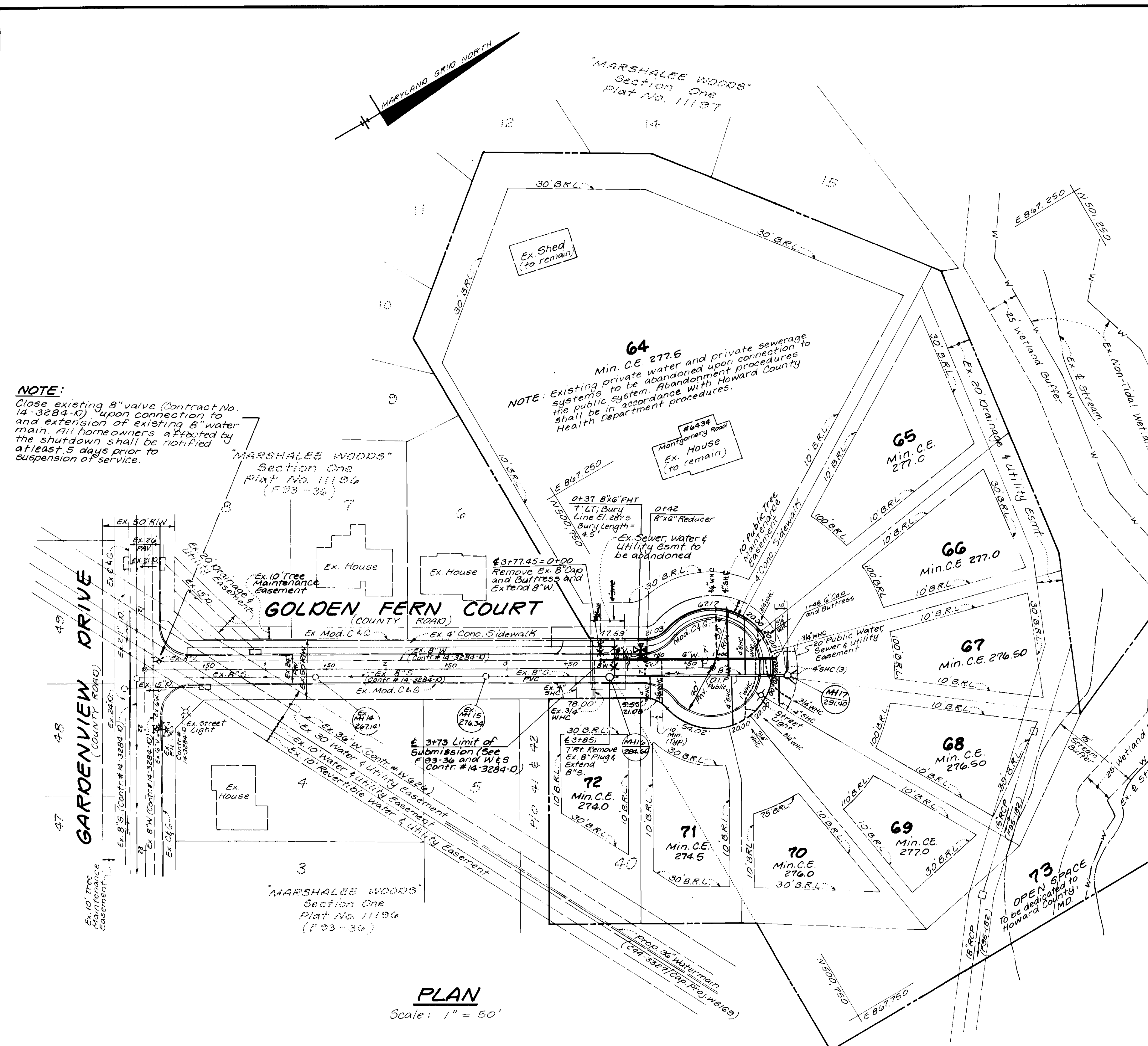
**MARSHALEE WOODS**  
SECTION TWO AREA TWO  
LOTS 64 thru 73  
1st ELECTION DISTRICT HOWARD COUNTY, MD  
CONTRACT No. 14-3488-D

SCALE AS SHOWN

SHEET 1 OF 2

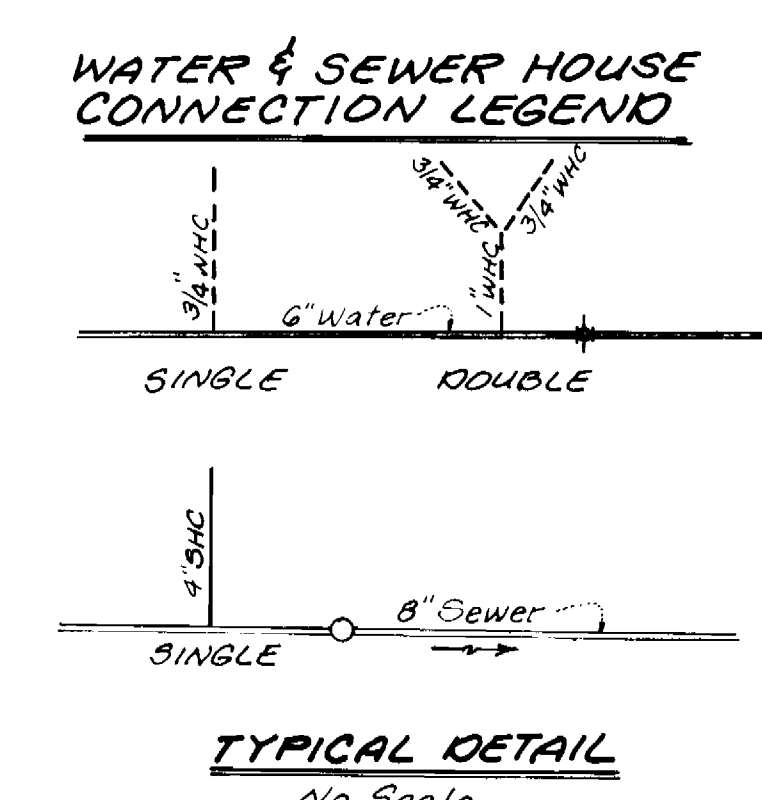
3488 WS/1 Marshalee Woods, 2/2, lots 64-73

3400 wslc Marshalee Woods, 2 1/2, lots 64-73



**SEWER HOUSE CONNECTION TABLE**

LOT	INV. @ LESMT.	MIN. C.E.	LOT	INV. @ LESMT.	MIN. C.E.
64	270.17	277.50	69	271.12	277.00
65	271.40	277.00	70	271.19	276.00
66	271.57	277.00	71	270.93	274.50
67	271.02	276.50	72	274.86	274.00
68	271.02	276.50			



REVIEWED FOR HOWARD SOIL CONSERVATION DISTRICT AND MEETS TECHNICAL REQUIREMENTS

*Patricia Engle* 11/7/95  
SIGNATURE DATE  
NATURAL RESOURCES CONSERVATION SERVICE

THIS DEVELOPMENT PLAN IS APPROVED FOR SOIL EROSION AND SEDIMENT CONTROL BY THE HOWARD COUNTY SOIL CONSERVATION DISTRICT.

*John R. Robertson* 11/7/95  
SIGNATURE DATE  
HOWARD SOIL CONSERVATION DISTRICT

SEDIMENT CONTROL MEASURES FOR THIS CONTRACT WILL BE IMPLEMENTED IN ACCORDANCE WITH SECTION 213 OF THE STANDARD SPECIFICATION AND FINAL ROAD CONSTRUCTION PLANS F-95-182

DEPARTMENT OF PUBLIC WORKS <i>Robert W. Beinson</i> 11-1-95 CHIEF - BUREAU OF UTILITIES DATE	DEPARTMENT OF PLANNING AND ZONING <i>[Signature]</i> 11/1/95 CHIEF DEVELOPMENT ENGINEERING DIV. DATE	<b>LDE INC.</b> 9250 RUMSEY ROAD UNIT #106 COLUMBIA, MARYLAND 21045 PHONE: (410) 715-1070 <i>PAUL D. BUFFALO</i> 11/1/95	Designed EOS Drawn ABW Checked BOS Date June, 1995	H.C. 1 BY No. 1 REVISION ASBEST CONDITIONS ADDED TO PLAN DATE 2.13.06	<b>PLAN and PROFILE</b> 600 SCALE MAP NO. 37 BLOCK NO. 11	<b>MARSHALEE WOODS</b> SECTION TWO AREA TWO LOTS 64 thru 73 1st ELECTION DISTRICT HOWARD COUNTY, MD. CONTRACT No. 14-3488-D	SCALE AS SHOWN SHEET 2 OF 2
--	--	---	---	--	--	---	--------------------------------