

GENERAL NOTES

PART I - GENERAL

- Approximate location of existing mains are shown. The contractor shall take all necessary precautions to protect existing mains and services and maintain uninterrupted supply. Any damage incurred shall be repaired immediately to the satisfaction of the Engineer at the Contractor's expense.
- All horizontal controls are based on Maryland State Coordinates. [North American Datum of 1983 (NAD '83)].
- All vertical controls are based on U.S.G.S. data.
- All pipe elevations shown are invert elevations.
- Clear all utilities by a minimum of 6". Clear all poles by 2'-0" minimum or tunnel as required. The owner has contacted the utility companies and has made arrangements for bracing of poles as shown on the drawings. In the event that the contractor's work requires the bracing of additional poles, any cost incurred by the owner for bracing of additional poles or damages shall be deducted from money owed the contractor. The contractor shall coordinate with the utility companies to schedule the bracing of the poles.
- For details not shown on the drawings, and for materials and construction methods, use Howard County Design Manual, Volume IV, Standard Specifications and Details for Construction (Latest Edition). The contractor shall have a copy of Volume IV on the job.
- Where test pits have been made on existing utilities, they are noted by the symbol at the location of the test pit. A note or notes containing the results of the test pit or pits is included on the drawings. Existing utilities in the vicinity of the proposed work for which test pits have not been dug shall be located by the contractor two weeks in advance of construction operations at his own expense.
- Contractor shall notify the following utility companies or agencies at least five working days before starting work shown on these plans:

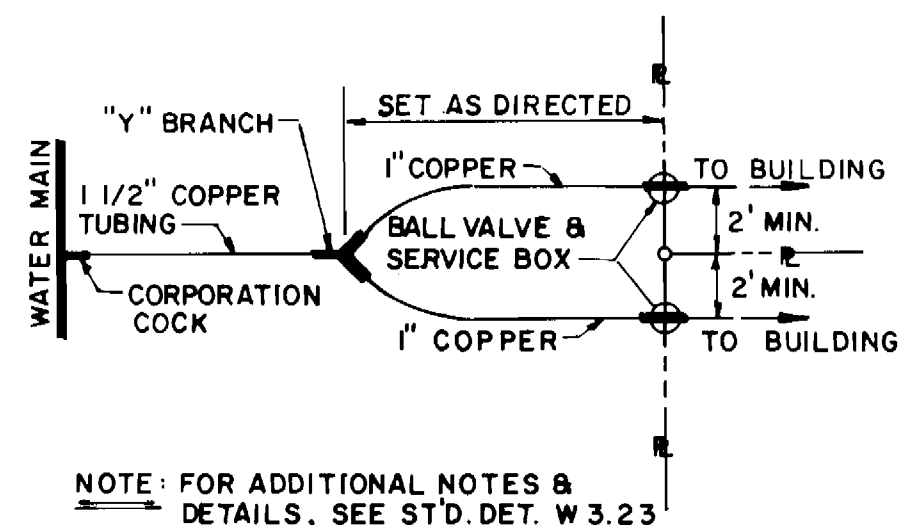
State Highway Administration	531-5533
BC&E Co. Contractor Services	850-4620
BC&E Co. Under Ground Damage Control	787-9068
Miss Utility	1-800-257-7777
Colonial Pipeline Co.	795-1390
Howard County Department of Public Works Bureau of Utilities	313-4900
- Trees and shrubs are to be protected from damage to maximum extent. Trees and shrubs located within the construction strip are not to be removed or damaged by the contractor.
- Contractor shall remove trees, stumps and roots along line of excavation. Payment for such removal shall be included in the unit price bid for construction of the main.
- The contractor shall notify the Bureau of Highways, Howard County, at (410) 313-2450 at least five working days before any open cut of any County road or boring/jacking operation in County roads for laying water/sewer mains or house connections. The approval of these drawings will constitute compliance with DPW requirements per Section 18.114(a) of the Howard County Code.

PART II - WATER

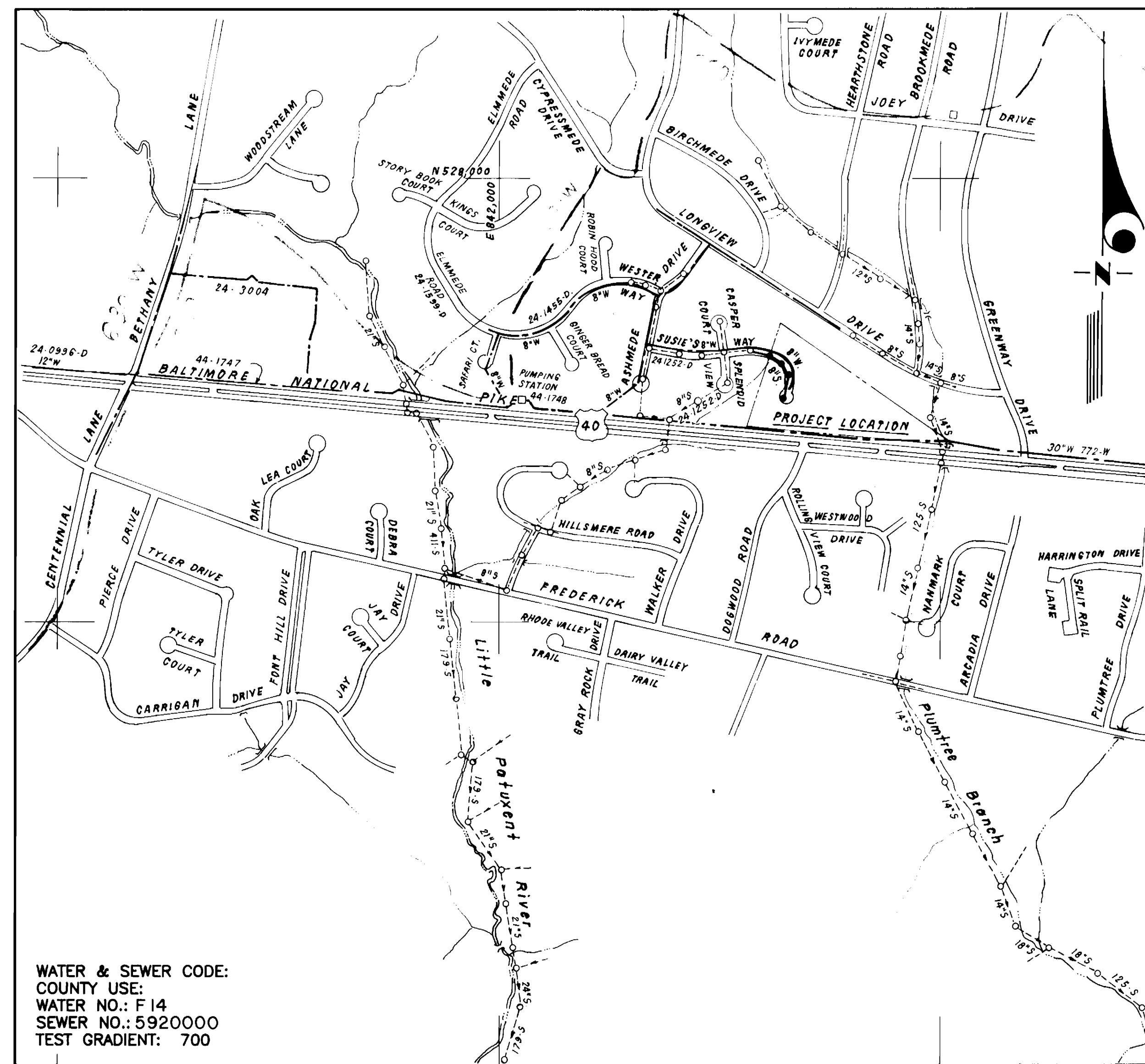
- All water mains to be D.I.P. Class 52 unless otherwise noted.
- Tops of all water mains to have a minimum of 3'-1/2' cover unless otherwise noted.
- Valves adjacent to tees shall be strapped to tees.
- All fittings shall be buttressed or anchored with concrete in accordance with the Standard Details unless otherwise provided for on the drawings.
- Fire hydrants shall be set to the bury line elevations shown of the drawings. All fire hydrants shall be restrained and buttressed with concrete in accordance with Standard Details. Soil around the fire hydrant shall be compacted in accordance with Sections 1000 and 1005 of the Standard Specifications.
- The contractor shall not operate any water main valves on the existing water system.
- All water house connections shall be for inside meter setting unless otherwise noted on plans or in specifications.
- For sprinkler system for all townhomes or multi-family dwelling units shall have a minimum of 1" connection with a 3/4" meter.

PART III - SEWER

- All sewer mains shall be DIP or P.V.C. unless otherwise noted.
- All manholes shall be 4'-0" inside diameter unless otherwise noted.
- Force mains shall be D.I.P. only.
- Manholes shown with 12" and 16" walls are for brick manholes only.
- Manholes designated W.T. in plan and profile shall have watertight frame and covers, Standard Detail G5.52. Where watertight manhole frame and cover is used, set top of frame 1' - 6" above finished grade unless otherwise noted on the drawings.
- House(s) with the symbol "C.N.S." indicates that cellar cannot be served.



TYPICAL DETAIL OF A DUAL WATER HOUSE CONNECTION
NO SCALE



WATER & SEWER CODE:
COUNTY USE:
WATER NO.: F 14
SEWER NO.: 5920000
TEST GRADIENT: 700

TYPE OF BUILDING SINGLE FAMILY RESIDENTIAL
NO. OF LOTS/PARCELS 21
NO. OF WATER HOUSE CONNECTIONS 20
NO. OF SEWER HOUSE CONNECTIONS 20
DRAINAGE AREA LITTLE PATUXENT
TREATMENT PLANT PATAPSCO via Route 108 Pumping Station

VICINITY MAP
SCALE: 1" = 600'

QUANTITIES		AS-BUILT		
ITEMS	QUANTITIES ESTIMATED	QUANTITIES	TYPE	MANUFACTURER/SUPPLIER
8" W	243 L.F.	243 L.F.	CL 52	B.R.S. / GRIFFIN
1" WHC	200 L.F.	100 L.F.	K' COPPER	/ HOWELL MFGR.
1 1/2" WHC	150 L.F.	105 L.F.	K' COPPER	"
FIRE HYDRANT	1 EA.	1 EA.	MUELLER	/ MUELLER
8" S	490 L.F.	430 L.F.	SDR-35	/ J.M. MFGR.
4" SHC	680 L.F.	650 L.F.	"	"
4'-0" MANHOLE	4 EA.	4 EA.	4'	ATLANTIC PRECAST
1 1/4" WHC	43 L.F.	50'	K' COPPER	B.R.S. / HOWELL
6" W	177 L.F.	177 L.F.	CL 52	/ GRIFFIN
NAME OF UTILITY CONTRACTOR: C. C. S.				
SURVEY AND DRAFTING DIVISION AS-BUILT DATE:				

SEDIMENT CONTROL MEASURES WILL BE IMPLEMENTED IN ACCORDANCE WITH SECTION 219 OF THE SPECIFICATIONS AND WITH ROAD CONSTRUCTION PLAN F-96-56 ; DRAWING 5 & 6 , SEDIMENT AND EROSION CONTROL.

REVIEWED FOR HOWARD SOIL CONSERVATION DISTRICT AND MEETS TECHNICAL REQUIREMENTS.
Patricia Engle 1/17/96
SIGNATURE DATE
U. S. SOIL CONSERVATION SERVICE
THIS DEVELOPMENT PLAN IS APPROVED FOR SOIL EROSION AND SEDIMENT CONTROL BY THE HOWARD SOIL CONSERVATION DISTRICT.
APPROVED
John R. Platon 1/17/96
HOWARD S. C. D. DATE

CONTRACT NO. 24-3486- D
BRICKHOUSE ON THE PIKE
LOTS 1 THRU 21
HOWARD COUNTY, MARYLAND
DEPARTMENT OF PUBLIC WORKS

DEPARTMENT OF PUBLIC WORKS HOWARD COUNTY, MARYLAND	DEPARTMENT OF PLANNING & ZONING HOWARD COUNTY, MARYLAND	CLARK · FINEFROCK & SACKETT, INC. ENGINEERS · PLANNERS · SURVEYORS 7135 MINSTREL WAY COLUMBIA, MD 21045 (410) 381-7500 BALT. (301) 621-8100 WASH.	DES: JTR DRN: JTR CHK: <i>[Signature]</i> DATE: OCT. 95	BY: NO. REVISION DATE	TITLE SHEET	600' SCALE MAP NO. 24 BLOCK NO. 3	BRICKHOUSE ON THE PIKE LOTS 1 THRU 21 2ND ELECTION DISTRICT HOWARD COUNTY, MARYLAND CONTRACT No. 24-3486-D	SCALE: AS SHOWN SHEET 1 OF 3
---	--	--	--	-----------------------	-------------	-----------------------------------	--	---------------------------------------

AS-BUILT 9/96

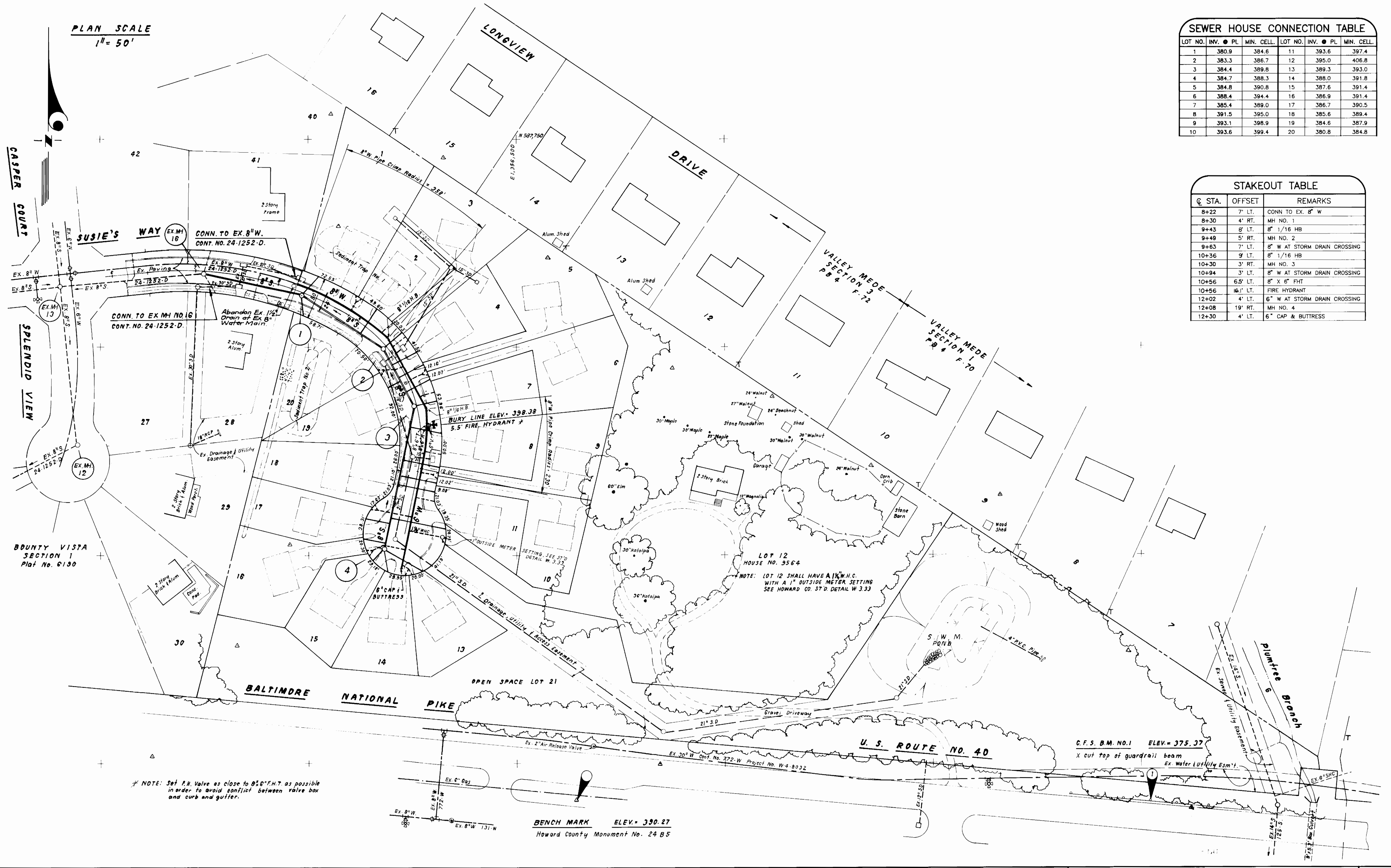
PLAN SCALE
1" = 50'

SEWER HOUSE CONNECTION TABLE

LOT NO.	INV. ● PL.	MIN. CELL.	LOT NO.	INV. ● PL.	MIN. CELL.
1	380.9	384.6	11	393.6	397.4
2	383.3	386.7	12	395.0	406.8
3	384.4	389.8	13	389.3	393.0
4	384.7	388.3	14	388.0	391.8
5	388.8	390.8	15	387.6	391.4
6	388.4	394.4	16	386.9	391.4
7	385.4	389.0	17	386.7	390.5
8	391.5	395.0	18	385.6	389.4
9	393.1	398.9	19	384.6	387.9
10	393.6	399.4	20	380.8	384.8

STAKEOUT TABLE

Q. STA.	OFFSET	REMARKS
8+22	7' LT.	CONN. TO EX. 8" W
8+30	4' RT.	MH NO. 1
9+43	8' LT.	8" 1/16 HB
9+49	5' RT.	MH NO. 2
9+63	7' LT.	8" W AT STORM DRAIN CROSSING
10+36	9' LT.	8" 1/16 HB
10+30	3' RT.	MH NO. 3
10+94	3' LT.	8" W AT STORM DRAIN CROSSING
10+56	6.5' LT.	8" X 6" FHT
10+56	16.1' LT.	FIRE HYDRANT
12+02	4' LT.	6" W AT STORM DRAIN CROSSING
12+08	19' RT.	MH NO. 4
12+30	4' LT.	6" CAP & BUTTRESS



* NOTE: Set P.H. Valve as close to 85% F.N.T. as possible in order to avoid conflict between valve box and curb and gutter.

BENCH MARK ELEV. = 390.27
Howard County Monument No. 24 B5

DEPARTMENT OF PUBLIC WORKS
HOWARD COUNTY, MARYLAND
1-3-96
DATE

DEPARTMENT OF PLANNING & ZONING
HOWARD COUNTY, MARYLAND
1-3-96
DATE

CLARK · FINEROCK & SACKETT, INC.
ENGINEERS · PLANNERS · SURVEYORS
7135 MINSTREL WAY COLUMBIA, MD 21045
(410) 381-7500 BALT. (301) 621-8100 WASH.



DES: JTR
DRN: JTR
CHK: [Signature]
DATE: OCT. 95
BY NO. REVISION DATE

WATER AND SEWER
PLAN VIEW
600' SCALE MAP NO. 24 BLOCK NO. 3

BRICKHOUSE ON THE PIKE
LOTS 1 THRU 21
2ND ELECTION DISTRICT
HOWARD COUNTY, MARYLAND
CONTRACT No. 24-3486-D

SCALE:
1" = 50'
SHEET
2 OF 3

SEWER HOUSE CONNECTION AS-BUILTS

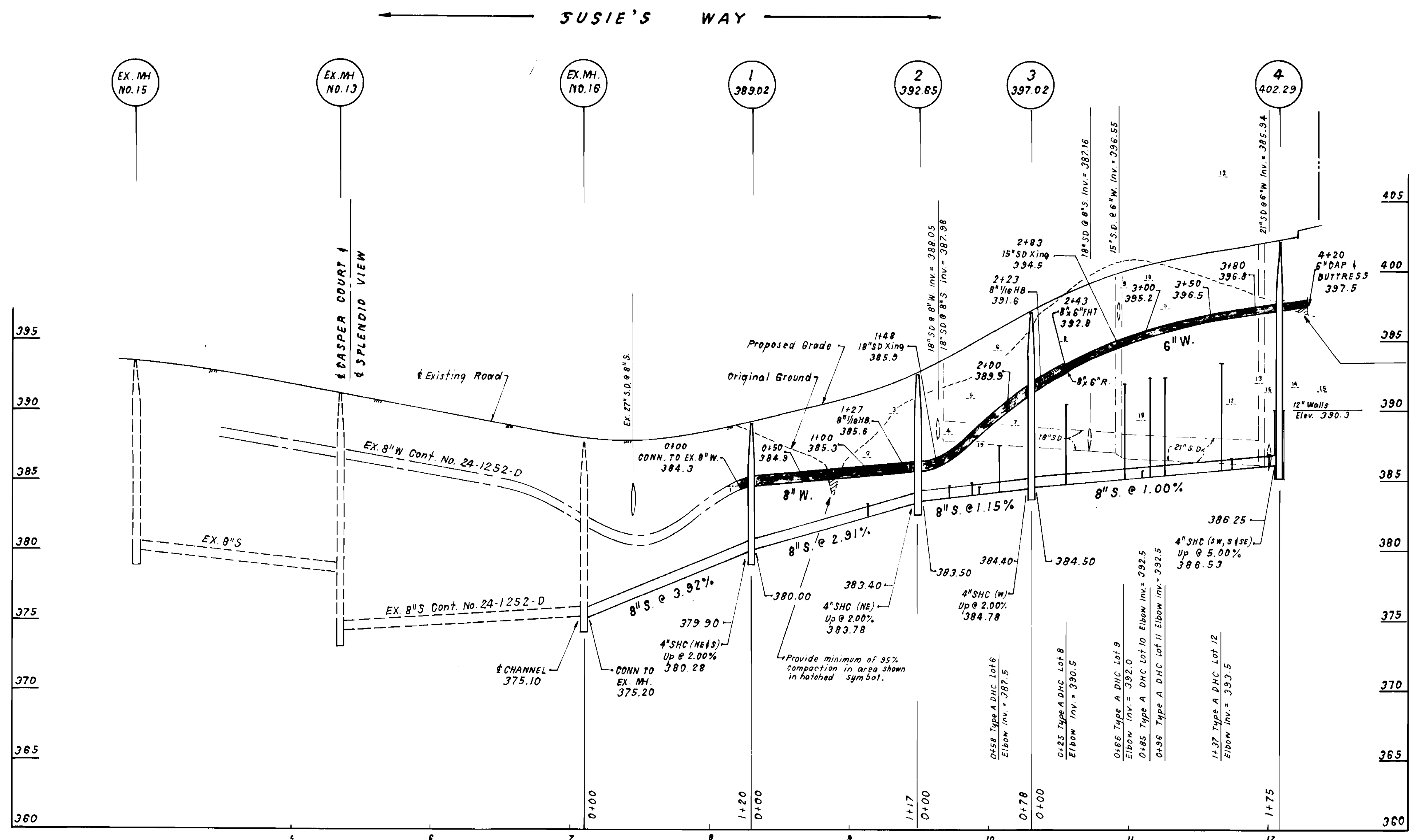
SHC NO. (FROM)	TO	DISTANCE
1	MH-1	40.0'
1	WHC-1	114.0'
222	MH-2	4.0'
222	WHC-1	22.0'
222	WHC-2	22.0'
444	MH-2	22.0'
444	WHC-3	22.0'
444	MH-3	22.0'
444	INLET-5	22.0'
444	WHC-5	22.0'
555	MH-2	22.0'
555	INLET-5	22.0'
555	WHC-5	22.0'
666	MH-1	22.0'
666	WHC-5	22.0'
666	MH-3	22.0'
666	SDMH-5	22.0'
666	WHC-5	22.0'
777	MH-3	22.0'
777	SDMH-5	22.0'
777	WHC-5	22.0'
888	MH-3	22.0'
888	SDMH-5	22.0'
888	WHC-5	22.0'
999	SDMH-5	22.0'
999	WHC-5	22.0'
1000	MH-3	22.0'
1000	SDMH-5	22.0'
1000	WHC-5	22.0'
111	MH-4	22.0'
111	SDMH-4	22.0'
111	WHC-11	22.0'
122	SDMH-4	22.0'
122	MH-4	22.0'
122	WHC-11	22.0'
133	MH-4	22.0'
133	SDMH-4	22.0'
133	WHC-15	22.0'
144	MH-4	22.0'
144	WHC-14	22.0'
155	MH-4	22.0'
155	SDMH-4	22.0'
155	WHC-15	22.0'
166	MH-4	22.0'
166	WHC-16	22.0'
177	MH-4	22.0'
177	SDMH-4	22.0'
177	WHC-17	22.0'
188	SDMH-5	22.0'
188	I-9	22.0'
188	WHC-18	22.0'
199	MH-3	22.0'
199	WHC-19	22.0'
200	MH-1	22.0'
200	WHC-20	22.0'

WATER HOUSE CONNECTION AS-BUILTS

WHC NO. (FROM)	TO	DISTANCE
1	MH-1	40.0'
1	WHC-2	114.0'
222	MH-2	4.0'
222	WHC-3	22.0'
222	WHC-4	22.0'
444	MH-2	22.0'
444	WHC-5	22.0'
444	WHC-6	22.0'
555	MH-2	22.0'
555	WHC-5	22.0'
555	WHC-6	22.0'
666	MH-1	22.0'
666	WHC-5	22.0'
666	WHC-6	22.0'
777	MH-3	22.0'
777	WHC-6	22.0'
777	WHC-7	22.0'
888	MH-3	22.0'
888	WHC-6	22.0'
888	WHC-7	22.0'
999	SDMH-5	22.0'
999	WHC-6	22.0'
999	WHC-7	22.0'
1000	MH-3	22.0'
1000	SDMH-5	22.0'
1000	WHC-6	22.0'
1000	WHC-7	22.0'
111	MH-4	22.0'
111	WHC-8	22.0'
111	WHC-9	22.0'
122	MH-4	22.0'
122	WHC-10	22.0'
122	WHC-11	22.0'
122	WHC-12	22.0'

CONTINUED

WHC NO. (FROM)	TO	DISTANCE
130	SDMH-4	22.0'
130	MH-4	22.0'
130	WHC-14	22.0'
144	SDMH-4	22.0'
144	MH-4	22.0'
144	WHC-13	22.0'
150	SDMH-4	22.0'
150	MH-4	22.0'
150	WHC-14	22.0'
166	MH-4	22.0'
166	SDMH-4	22.0'
166	WHC-15	22.0'
177	MH-4	22.0'
177	SDMH-4	22.0'
177	WHC-16	22.0'
177	WHC-17	22.0'
188	MH-4	22.0'
188	SDMH-4	22.0'
188	WHC-17	22.0'
200	MH-2	22.0'
200	WHC-20	22.0'
200	WHC-19	22.0'



SUSIE'S WAY

PROFILE SCALE
HORIZONTAL: 1" = 50'
VERTICAL: 1" = 5'

NOTE: For Type 'A' Drop House Connection, See Standard Detail No. S 2.12

DEPARTMENT OF PUBLIC WORKS
HOWARD COUNTY, MARYLAND
1-3-96

DEPARTMENT OF PLANNING & ZONING
HOWARD COUNTY, MARYLAND
10/19/96

CLARK · FINEPROCK & SACKETT, INC.
ENGINEERS · PLANNERS · SURVEYORS
7135 MINSTREL WAY COLUMBIA, MD 21045
(410) 381-7500 BALT. (301) 621-8100 WASH.



DES:	JTR
DRN:	JTR
CHK:	[Signature]
DATE:	OCT. 95
BY:	NO.
REVISION:	
DATE:	

WATER AND SEWER PROFILES
600' SCALE MAP NO. 24 BLOCK NO. 3

BRICKHOUSE ON THE PIKE
LOTS 1 THRU 21
2ND ELECTION DISTRICT
HOWARD COUNTY, MARYLAND
CONTRACT No. 24-3486-D

SCALE: AS SHOWN
SHEET 3 OF 3

AS-BUILT 9/96

CFS 95-112