

3A48 WS/3 Autumn View

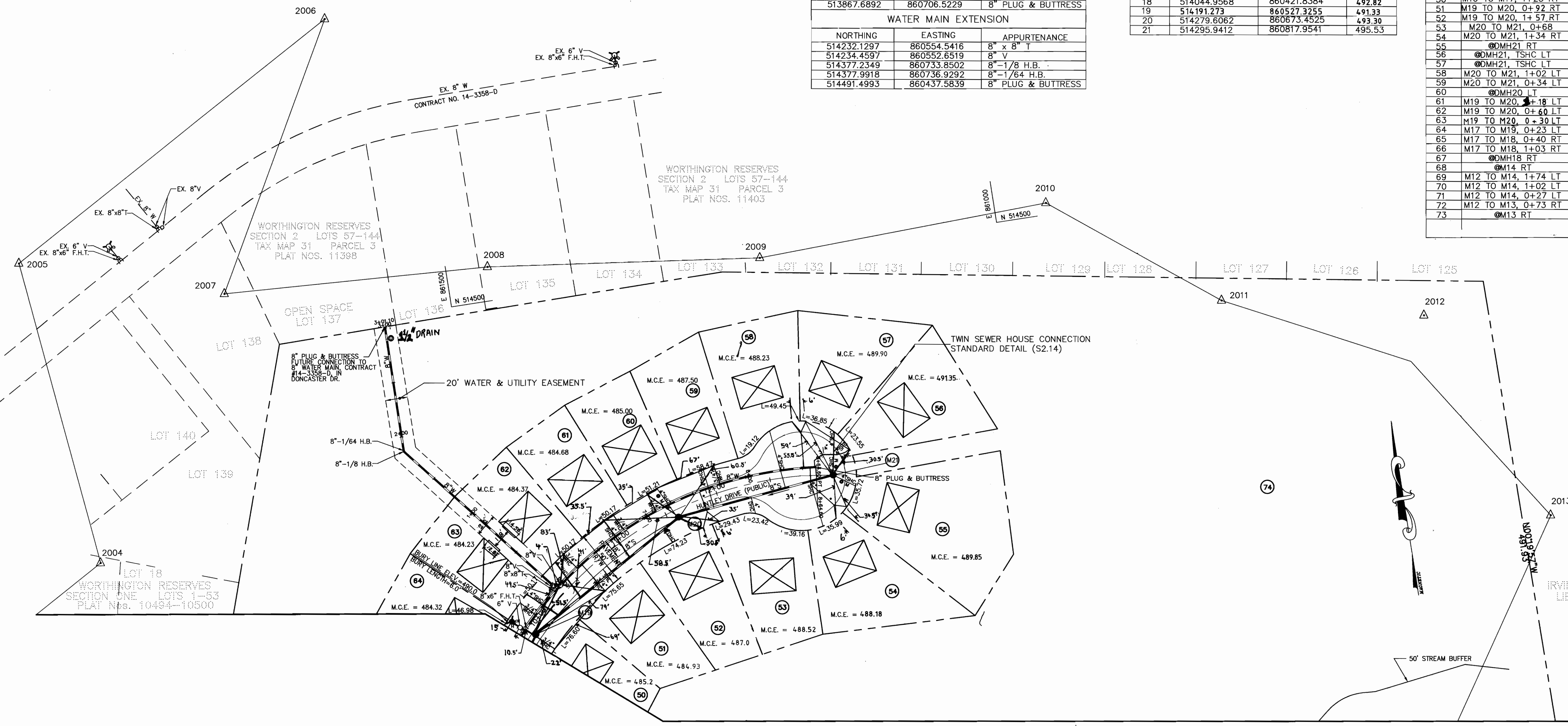
WATER MAIN CRIMP CHART		
HUNTLEY DRIVE		
WATER MAIN STATIONS	APPURTENANCE	RADIUS
2+62.27	PC: BEGIN CRIMP	1507'
4+38.71	PT: END CRIMP	
5+05.84	PC: BEGIN CRIMP	337'
8+64.60	PT: END CRIMP	
TERRY DRIVE		
WATER MAIN STATIONS	APPURTENANCE	RADIUS
0+98.42	PC: BEGIN CRIMP	1193'
3+48.27	PT: END CRIMP	

TRAVERSE NO	NORTHING	EASTING
104	513399.0430	860565.9620
103	513530.1037	860211.9373
2002	513812.4553	860145.4572
2003	514056.0925	860313.2755
2004	514225.2934	860608.6240
2005	514505.5698	860577.6369
2006	514681.9060	860885.8994
2007	514449.1862	860757.4057
2008	514436.5369	860996.6316
2009	514406.5143	861241.7071
2010	514416.0370	861505.6778
2011	514303.8755	861649.2565
2012	514222.9951	861810.1258
2013	514065.3052	861913.4569
2014	513849.5464	861772.2704
2015	513642.3026	861381.3145
2016	513457.8093	860957.0043
2017	513471.7025	860706.2003
2018	513399.0430	860565.9620

WATER MAIN TABULATION CHART			HUNTLEY DRIVE		
NORTHING	EASTING	APPURTENANCE	NORTHING	EASTING	APPURTENANCE
513731.4797	860218.6299	EX 8" x 8" T & 8" V	513752.3614	861574.2667	416.50
513793.7407	860253.0984	8" x 6" F.H.T.	513827.5790	861544.5325	420.17
513795.5260	860250.0859	6" V	513870.5713	861481.9844	422.50
514027.4919	860398.4723	8" x 8" T	513791.2039	861089.9371	428.50
514030.3061	860399.6146	8" V	513795.4661	860864.2538	455.00
514198.0415	860518.3374	8" x 6" F.H.T.	513911.5733	860837.4006	456.90
514200.0288	860516.0894	8" V	513869.9624	860559.7034	471.63
514232.1297	860554.5416	8" x 8" T	513716.2287	860598.1303	466.33
514234.0149	860556.8753	8" V	513742.8016	860532.3600	469.00
514306.6807	860789.0938	8" BLOW-OFF	513818.3359	860548.0599	482.00
514309.3806	860803.6386	8" PLUG & BUTTRESS	513593.6349	861481.9844	469.60
TERRY DRIVE			NORTHING	EASTING	APPURTENANCE
514027.4919	860398.4723	8" x 8" T	514027.4919	860398.4723	8" x 8" T
514026.1910	860400.6072	8" V	514026.1910	860400.6072	8" V
513867.6892	860706.5229	8" PLUG & BUTTRESS	513867.6892	860706.5229	8" PLUG & BUTTRESS
514491.4993	860437.5839	8" PLUG & BUTTRESS	514491.4993	860437.5839	8" PLUG & BUTTRESS

MANHOLE TABULATION CHART			
MH NO.	NORTHING	EASTING	RIM ELEV.
EX. 301	513752.3614	861574.2667	416.50
1	513827.5790	861544.5325	420.17
2	513870.5713	861481.9844	422.50
3	513791.2039	861089.9371	428.50
4	513795.4661	860864.2538	455.00
5	513911.5733	860837.4006	456.90
6	513869.9624	860559.7034	471.63
7	513716.2287	860598.1303	466.33
8	513742.8016	860532.3600	469.00
9	513818.3359	860548.0599	482.00
10	513593.6349	861481.9844	469.60
11	513687.4474	860320.4828	499.03
12	513732.3264	860240.0108	504.85
13	513659.6117	860196.9614	507.65
14	513904.1337	860341.1986	496.83
15	514019.9568	860843.5779	459.24
16	514053.2773	860650.2808	475.00
17	514156.9358	860503.1371	491.23
18	514044.9568	860421.8384	492.82
19	514191.2773	860527.3255	491.33
20	514279.6062	860673.4525	493.30
21	514295.9412	860817.9541	495.53

SEWER HOUSE CONNECTION TABLE				
LOTS #	STATION	SLOPE(%)	INV. @ PROPERTY LINE	TYPE OF CONNECTION
28	M11 to M12, 0+06 LT	2.00	490.85	DHC
29	M10 to M11, 2+04 LT	2.00	482.50	SHC
30	M10 to M11, 1+53 LT	4.91	478.20	SHC
31	M10 to M11, 0+91 LT	2.00	472.40	DHC
32	M10 to M11, 0+99 RT	2.00	480.48	DHC
33	M8 to M9, 0+54 LT	5.00	466.02	SHC
34	M12 to M14, 0+73 RT	2.00	488.30	SHC
35	@DMH9 LT	5.00	478.50	MANHOLE DHC
36	@DMH9, TSHC RT	5.00	477.85	MANHOLE DHC
37	@DMH9, TSHC RT	5.00	478.60	MANHOLE DHC
38	M8 to M9, 1+05 RT	5.00	474.02	DHC
39	M8 to M9, 0+59 RT	2.00	466.12	SHC
40	M6 to M7, 0+77 RT	2.00	465.90	DHC
41	M6 to M7, 0+94 LT	2.00	463.40	DHC
42	M5 to M6, 1+58 LT	2.00	462.24	DHC
43	M5 to M6, 0+86 LT	2.00	453.63	SHC
44	M5 to M6, 1+49 RT	1.00	453.02	SHC
45	@M6 RT	1.00	454.98	MANHOLE DHC
46	@DMH16 LT	1.00	468.1	MANHOLE DHC
47	M16 LT	2.00	471.20	MANHOLE DHC
48	M17 to M18, 0+90 LT	2.00	482.05	SHC
49	M16 to M17, 0+30 LT	2.00	482.3	DHC
50	M16 to M17, 1+23 RT	2.00	482.30	DHC
51	M19 to M20, 0+92 RT	2.00	481.63	SHC
52	M19 to M20, 1+57 RT	2.00	483.70	SHC
53	M20 to M21, 0+68 RT	2.00	484.82	DHC
54	M20 to M21, 1+34 RT	2.00	485.78	SHC
55	@DMH21 RT	2.00	486.50	MANHOLE DHC
56	@DMH21, TSHC LT	2.00	486.50	MANHOLE DHC
57	@DMH21, TSHC LT	2.00	486.50	MANHOLE DHC
58	M20 to M21, 1+02 LT	1.00	485.32	SHC
59	M20 to M21, 0+34 LT	1.00	484.63	SHC
60	@DMH20 LT	1.00	482.04	MANHOLE DHC
61	M19 to M20, 1+18 LT	1.00	481.71	SHC
62	M19 to M20, 0+60 LT	1.00	481.37	SHC
63	M19 to M20, 0+30 LT	1.00	481.21	SHC
64	M17 to M19, 0+23 LT	2.00	481.06	SHC
65	M17 to M18, 0+40 RT	1.00	482.13	SHC
66	M17 to M18, 1+03 RT	2.00	482.13	SHC
67	@DMH18 RT	5.00	487.70	MANHOLE DHC
68	@M14 RT	1.00	489.25	MANHOLE DHC
69	M12 to M14, 1+74 LT	2.00	482.22	SHC
70	M12 to M14, 1+02 LT	2.00	488.80	SHC
71	M12 to M14, 0+27 LT	5.00	482.31	SHC
72	M12 to M13, 0+73 RT	2.00	500.36	SHC
73	@M13 RT	2.00	496.74	MANHOLE DHC



SEWER MANHOLE CHART	
MH NO.	TYPES
2	TYPE "A" DROP MANHOLE
3	WATERTIGHT MANHOLE FRAME AND COVER
2	TYPE "B" DROP MANHOLE FRAME AND COVER
3	WATERTIGHT MANHOLE FRAME AND COVER
3	TYPE "B" DROP
8	STANDARD MANHOLE FRAME AND COVER

NOTE: LIMITS OF DISTURBANCE (LOD) SHOWN ON THESE PLANS DELINEATE DISTURBED AREAS OUTSIDE THOSE SHOWN ON THE AUTUMN VIEW ROADS AND STORM DRAIN PLAN; F-95-L3.

NOTE: M.C.E. = MINIMUM CELLAR ELEVATION

CONTRACT NO. 14-3448-D  
AUTUMN VIEW - SECTION TWO  
LOTS 28 - 73  
WATER AND SEWER EXTENSION  
HOWARD COUNTY, MARYLAND

DEPARTMENT OF PUBLIC WORKS  
HOWARD COUNTY, MARYLAND  
12-15-95

DEPARTMENT OF PLANNING & ZONING  
HOWARD COUNTY, MARYLAND  
12-15-95

**MILDENBERG, BOENDER & ASSOC., INC.**  
Engineers Planners Surveyors  
5072 Dorsey Hall Drive, Suite 202, Ellicott City, Maryland 21042  
(410) 897-0286 Fax: (301) 621-6521 Wash. (410) 897-0288 Fax

12-11-95

engineering	MAT			
illustration	MAT			
approval	JH	MP	4	REVISE WATER EASEMENT 12-10-99
		RCJ	3	REVISE MCE & SHC TABLES 11-12-96
		RCJ	2	REVISE MCE 10-18-96
project	94031	RCJ	1	REVISE W & S MAINS IN ACCORDANCE WITH MCE COMMENTS. 5-22-96
date	7/95	BY	NO.	REV. JON

**WATER & SEWER PLAN**  
600' SCALE MAP NO. 31 BLOCK NO. 3

**AUTUMN VIEW - SECTION 2**  
NO. OF LOTS: 47 (LOTS 28 - 74)  
CONTRACT #14-3448-D  
2ND ELECTION DISTRICT  
HOWARD COUNTY, MARYLAND

scale 1" = 50'  
3 OF 9