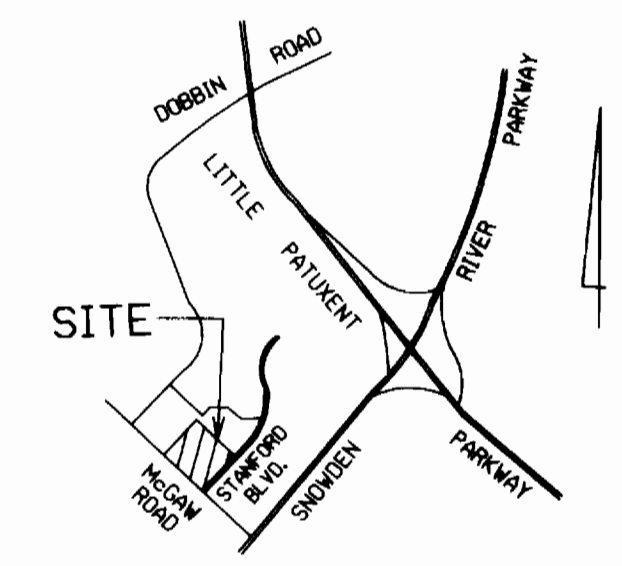


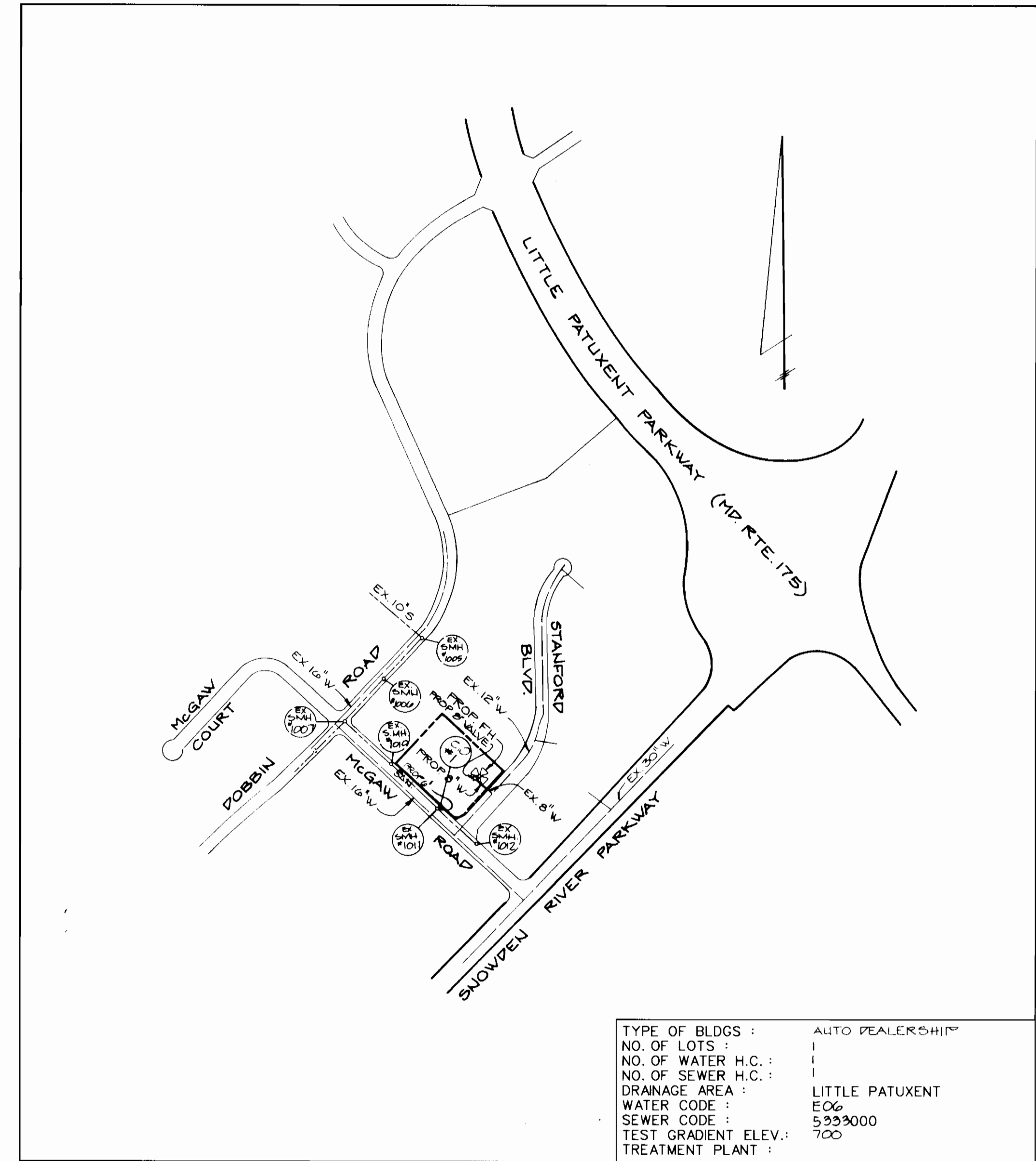
**GENERAL NOTES**

- Approximate location of existing mains are shown. The contractor shall take all necessary precautions to protect existing mains and services and maintain uninterrupted supply. Any damage incurred shall be repaired immediately to the satisfaction of the Engineer at the Contractor's expense.
- All horizontal controls are based on Maryland State Coordinates.
- All vertical controls are based on U.S.G.S. data.
- All pipe elevations shown are invert elevations.
- Clear all utilities by a minimum of 6". Clear all poles by 2'-0" minimum or tunnel as required. The owner has contacted the utility companies and has made arrangements for bracing of poles as shown on the drawings. In the event the contractor's work requires the bracing of additional poles, any cost incurred by the owner for bracing of additional poles or damages shall be deducted from money owed the contractor. The contractor shall coordinate with the utility companies to schedule the bracing of the poles.
- For details not shown on the drawings, and for materials and construction methods use Howard County Design Manual, Volume IV, Standard Specifications and Detail for Construction (Latest Edition). The contractor shall have a copy of Volume IV on the job.
- Where test pits have been made on existing utilities, they are noted by the symbol  at the location of the test pit. A note or notes containing the results of the test pit or pits is included on the drawings. Existing utilities in the vicinity of the proposed work for which test pits have not been dug shall be located by the contractor two weeks in advance of construction operations at his own expense.
- Contractor shall notify the following utility companies or agencies at least five working days before starting work shown on these plans:
 

State Highway Administration	531-5533
Baltimore Gas & Electric Co. Contractor Services	850-4620
Baltimore Gas & Electric Co. Underground Damage Control	787-9068
Miss Utility	1-800-257-7777
Colonial Pipeline Co.	795-1390
Bureau of Utilities, Howard County Department of Public Works	313-4900
- Trees and shrubs are to be protected from damage to maximum extent. Trees and shrubs located within the construction strip are not to be removed or damaged by the contractor.
- Contractor shall remove trees, stumps and roots along line of excavation. Payment for such removal shall be included in the unit price bid for construction of the main.
- All sewer mains shall be DIP, RCP, VCPX, CSPX, RCCP, and PVC unless otherwise noted.
- All manholes shall be 4'-0" inside diameter unless otherwise noted.
- Force mains shall be DIP only.
- Manhole must be precast concrete structures. (See detail this sheet.)
- Manholes designated W.T. in plan and profile shall have watertight frame and covers, Standard Detail G5.52. Where watertight manhole frame and cover is used, set top of frame 1'-6" above finished grade unless otherwise noted on the drawings.
- All fill areas within future roadway and under structures to be compacted to a minimum of 95% compaction as determined by AASHTO T-180.
- Valves adjacent to tees shall be strapped to tees.
- All water mains to be D.I.P. Class 52 unless otherwise noted.
- Tops of all water mains to have a minimum of 3-1/2' cover unless otherwise noted.
- All fittings shall be buttressed or anchored with concrete in accordance with the Standard Details unless otherwise provided for on the drawings.
- Fire hydrants shall be set to the bury line elevations shown on the drawings. All fire hydrants shall be restrained and buttressed with concrete in accordance with Standard Details. Soil around the fire hydrant shall be compacted in accordance with Section 1000 and 1005 of the Standard Specifications.
- The contractor shall notify the Bureau of Highways, Howard County, at (410) 313-2450 at least five working days before any open cut of any County road or boring/jacking operation in County roads for laying water/sewer mains or house connections. The approval of these drawings will constitute compliance with DPW requirements per Section 18.114(a) of the Howard County Code.
- The contractor shall not operate any water main valves on the existing water system.
- All water house connections shall be for inside meter setting unless otherwise noted on plans or in specifications.
- Manholes shown with 12" and 16" walls are for brick manholes only.



**VICINITY MAP**  
SCALE : 1" = 2000'



**LOCATION MAP**  
SCALE : 1" = 600'

QUANTITIES				
ITEMS	QUANTITIES ESTIMATED	AS-BUILT		
		QUANTITIES	TYPE	MANUFACTURER/SUPPLIER
8" VALVE MANHOLE	1	1	MJ RS. GATE VALVE PRECAST	KENNEDY ATLANTIC
8" DIP-WATER	101 L.F.	100 L.F.	DIP CL 54	GRIFFIN
6" DIP-WATER	6 L.F.	6 L.F.	DIP CL 54	GRIFFIN
8" x 6" TEE	1	1	MJ HYD. TEE	GRIFFIN
8" VALVE	1	1	MJ RS. GATE VALVE	KENNEDY
FIRE HYDRANT (335 BURY)	1	1		KENNEDY
3" SAN	2 L.F.	10 L.F.	SDR 35	ETI

NAME OF UTILITY CONTRACTOR : \_\_\_\_\_  
SURVEY AND DRAFTING DIVISION AS-BUILT DATE \_\_\_\_\_

**BENCHMARK**  
BM \*234401 ELEV. 307.49  
STANDARD CONCRETE MONUMENT  
SET FLUSH WITH SURFACE  
N 491333.018 E 858206.723  
  
BM \*2343001 ELEV. 288.24  
3/4" RB SET 0.3' BELOW  
THE SURFACE  
N 492140.801 E 857226.671

TYPE OF BLDGS : AUTO DEALERSHIP  
NO. OF LOTS : 1  
NO. OF WATER H.C. : 1  
NO. OF SEWER H.C. : 1  
DRAINAGE AREA : LITTLE PATUXENT  
WATER CODE : E06  
SEWER CODE : 5229000  
TEST GRADIENT ELEV. : 700  
TREATMENT PLANT :

SEDIMENT CONTROL MEASURES FOR THIS CONTRACT WILL BE IMPLEMENTED IN ACCORDANCE WITH SECTION 219 OF THE STANDARD SPECIFICATIONS AND SDP 95-58.

THE DEVELOPMENT PLAN IS APPROVED FOR SOIL EROSION AND SEDIMENT CONTROL BY THE HOWARD SOIL CONSERVATION DISTRICT.

APPROVED: *John R. Robertson* 4/6/95  
HOWARD SOIL CONSERVATION DISTRICT DATE

REVIEWED FOR HOWARD SOIL CONSERVATION DISTRICT AND MEETS TECHNICAL REQUIREMENTS.

*Patricia Engle* 4/6/95  
U.S. SOIL CONSERVATION SERVICE DATE

DEPARTMENT OF PUBLIC WORKS  
HOWARD COUNTY, MARYLAND

*James M. Allen* 4/6/95  
DIRECTOR OF PUBLIC WORKS DATE

*Paul J. Ryan* 4/7/95  
CHIEF BUREAU OF ENGINEERING DATE

*Robert B. Berman* 4/6/95  
CHIEF OF UTILITIES DATE

*William J. ...* 4/7/95  
CHIEF LAND DEVELOPMENT DIVISION DATE

**GEORGE WILLIAM STEPHENS, JR. AND ASSOCIATES, INC.**  
CIVIL ENGINEERS & LAND SURVEYORS  
658 KENILWORTH DRIVE, SUITE 100  
TOWSON, MARYLAND 21204  
(410) 825-8120

*George W. Stephens, Jr.*

DESIGNED : PRC  
DRAFTED : JMS  
CHECKED : PRC

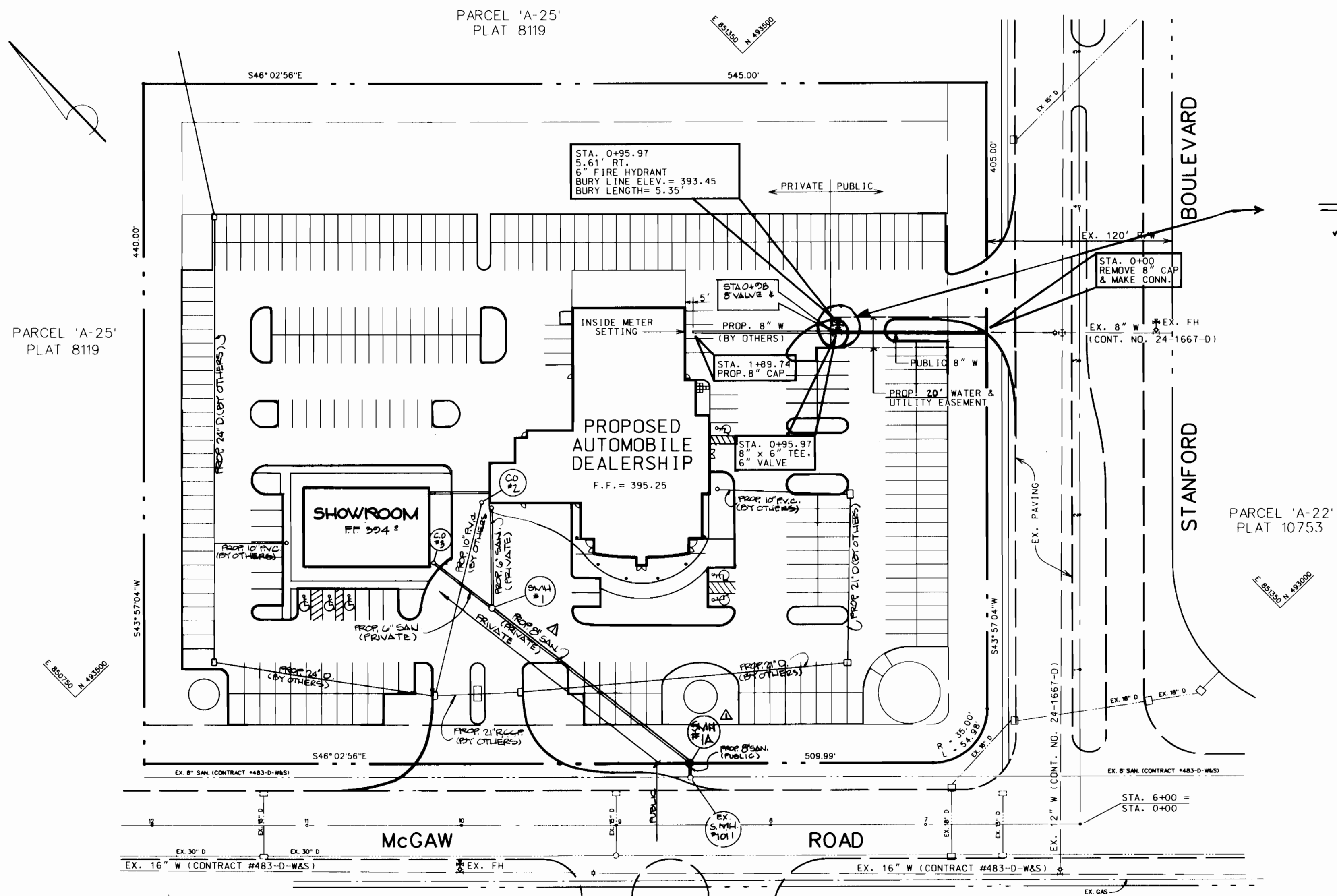
**GENERAL NOTES & LOCATION MAP FOR PUBLIC SEWER AND WATER MAIN**  
CONTRACT NO. 24-3426-D  
600 SCALE MAP NO. 36 BLOCK NO. 23 & 24

BY	NO.	REVISION	DATE
GWS	1	REPLACED CO #1 WITH A MANHOLE - REVISED 3" SAN FROM 5MM10N TO 5MM11 TO 8" SAN.	10/1/05

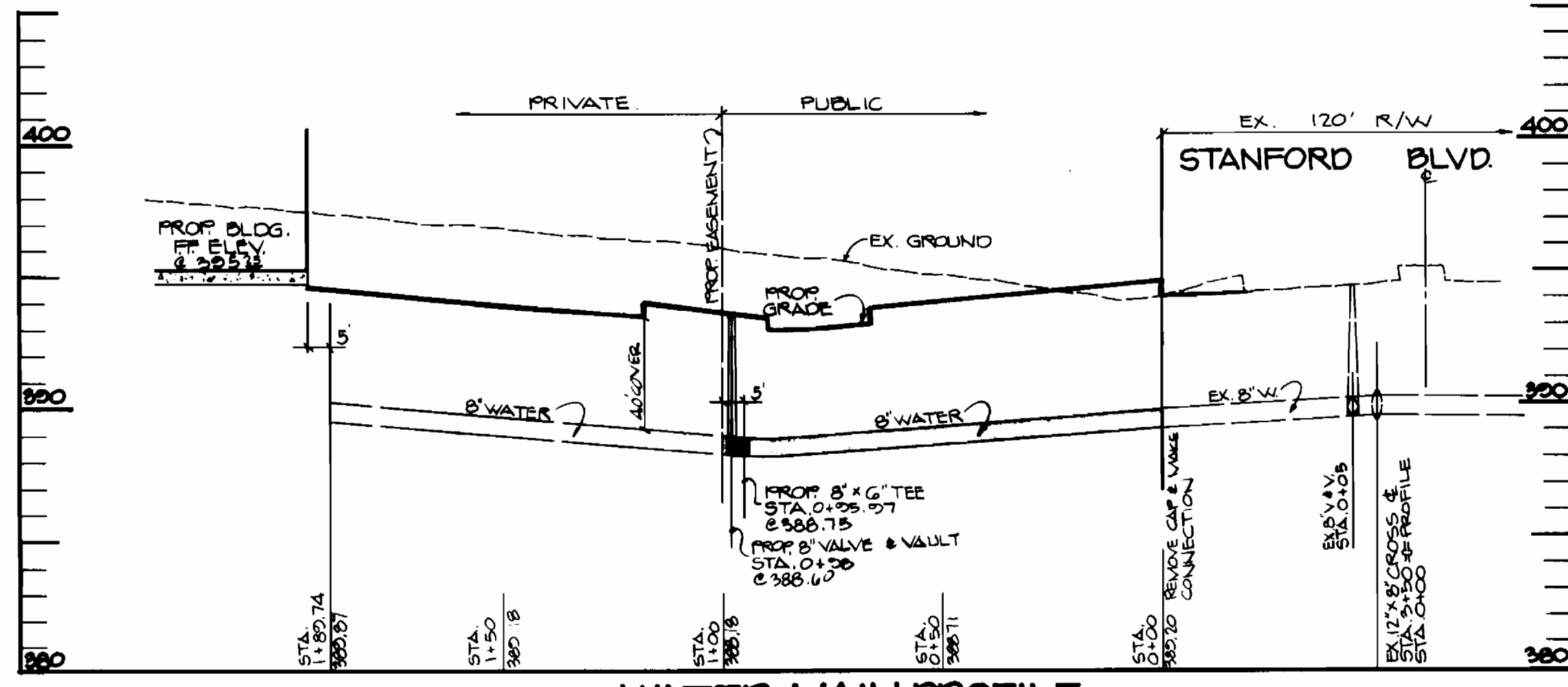
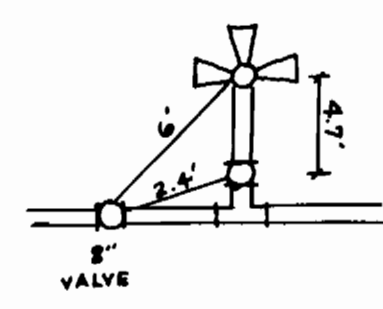
**PROPOSED AUTOMOBILE DEALERSHIP**  
**COLUMBIA CORPORATE PARK**  
PARCEL A-24  
HOWARD COUNTY, MARYLAND  
ELECTION DISTRICT \*6  
FEBRUARY 10, 1995  
SHEET 1 OF 2

AS-BUILT 2-13-96  
3426 ws/1 Columbia Corporate Park.

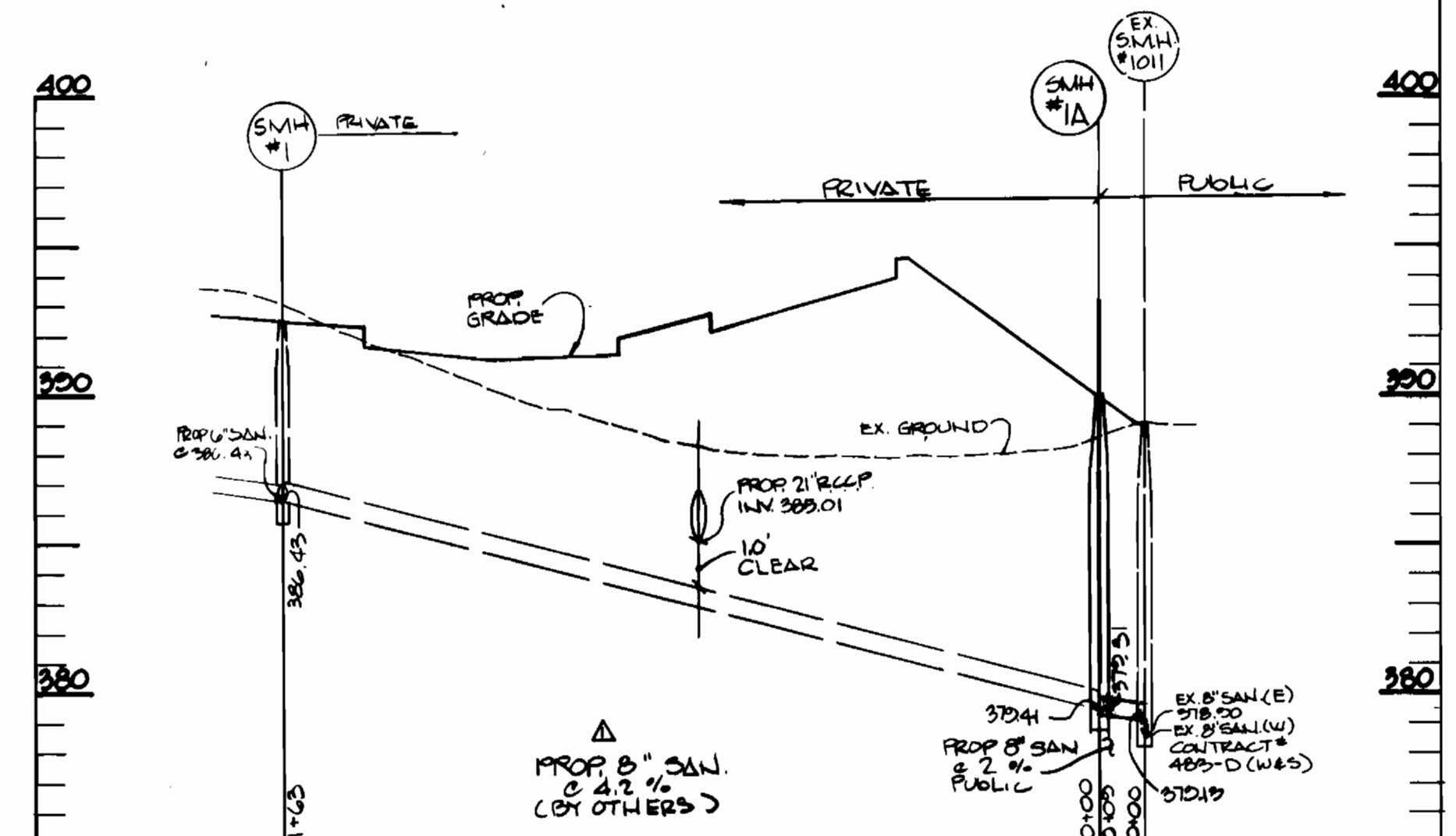
3426 ws/2 Columbia Corporate Park.



PLAN  
SCALE: 1" = 50'



WATER MAIN PROFILE  
SCALE: HORIZ. - 1" = 20'  
VERT. - 1" = 5'



SANITARY PROFILE  
SCALE: HORIZ. - 1" = 20'  
VERT. - 1" = 5'

SEDIMENT CONTROL MEASURES FOR THIS CONTRACT WILL BE IMPLEMENTED IN ACCORDANCE WITH SECTION 219 OF THE STANDARD SPECIFICATIONS AND SDP 95-58

THE DEVELOPMENT PLAN IS APPROVED FOR SOIL EROSION AND SEDIMENT CONTROL BY THE HOWARD SOIL CONSERVATION DISTRICT.

APPROVED: *John R. Roberts* 4/6/95  
HOWARD SOIL CONSERVATION DISTRICT DATE

REVIEWED FOR HOWARD SOIL CONSERVATION DISTRICT AND MEETS TECHNICAL REQUIREMENTS.

Patricia Engler/JPM 4/6/95  
U.S. SOIL CONSERVATION SERVICE DATE

DEPARTMENT OF PUBLIC WORKS  
HOWARD COUNTY, MARYLAND  
*James J. Chew* 4/6/95  
DIRECTOR OF PUBLIC WORKS DATE  
*Robert R. Berman* 4/7/95  
CHIEF BUREAU OF ENGINEERING DATE  
*William J. ...* 4/7/95  
CHIEF LAND DEVELOPMENT DIVISION DATE

**GWS**  
GEORGE WILLIAM STEPHENS, JR.  
AND ASSOCIATES, INC.  
CIVIL ENGINEERS & LAND SURVEYORS  
658 KENILWORTH DRIVE, SUITE 100  
TOWSON, MARYLAND 21284  
(410) 825-8120

*R. Williams*  
Professional Engineer Seal

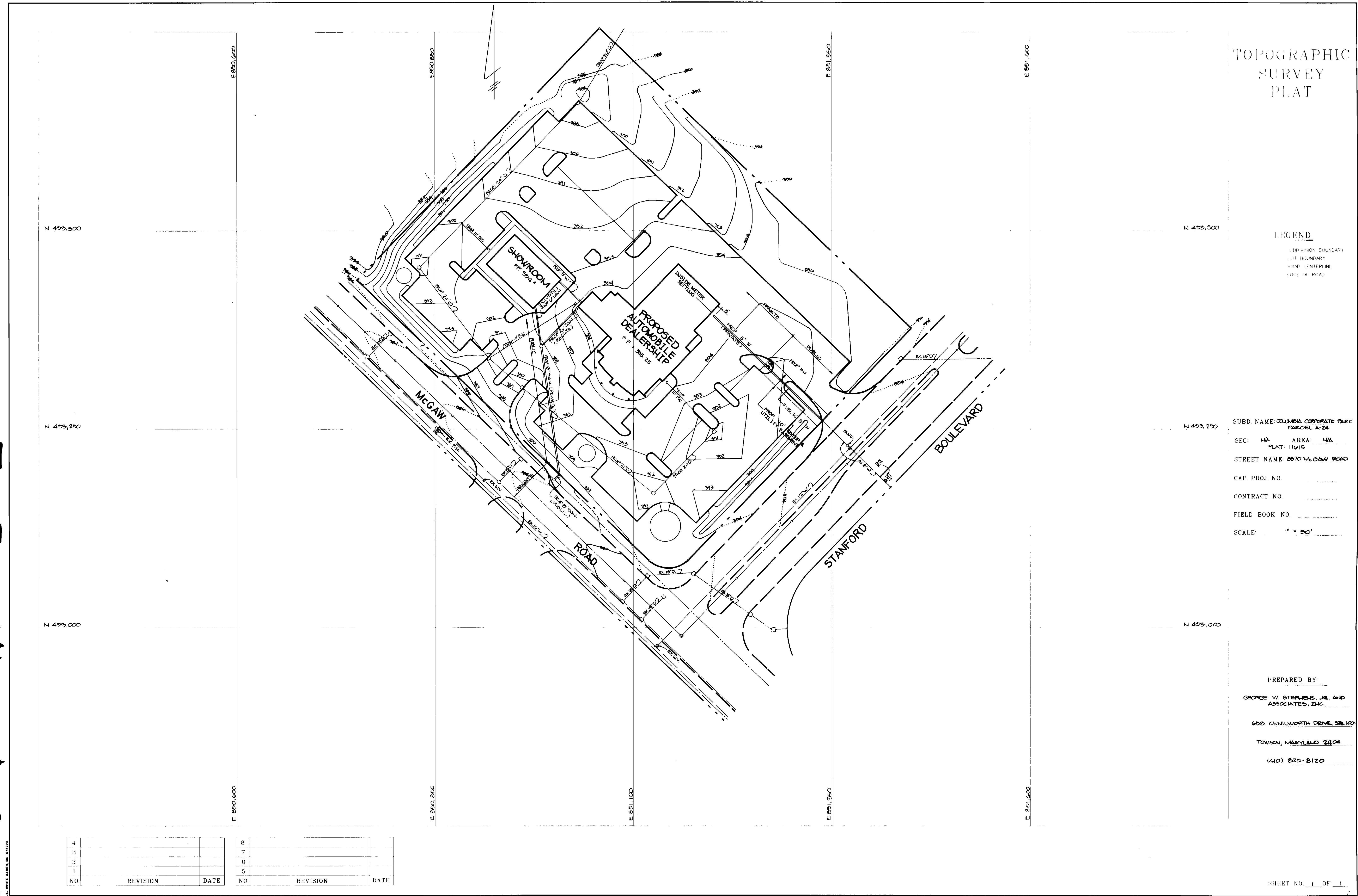
DESIGNED: RAM  
DRAFTED: JMS / RAM  
CHECKED: PRC

**PLAN AND PROFILE FOR PUBLIC SEWER AND WATER MAIN**  
CONTRACT NO. 24-2426-D  
600 SCALE MAP NO. 36 BLOCK NO. 23 & 24

**PROPOSED AUTOMOBILE DEALERSHIP COLUMBIA CORPORATE PARK PARCEL A-24**  
HOWARD COUNTY, MARYLAND ELECTION DISTRICT \*6  
FEBRUARY 10, 1995 SHEET 2 OF 2

BY	NO.	REVISION	DATE
GW-6	1	REPLACED CO. #1 W/ A MANHOLE, REVIDED 6" SAN. FROM SMH #1A TO SMH #1 TO 6" SAN.	10/1/06

3426 POS. SH. # 1 of 1



TOPOGRAPHIC  
SURVEY  
PLAT

LEGEND  
 --- DIVISION BOUNDARY  
 - - - - - ST. BOUNDARY  
 - - - - - ROAD CENTERLINE  
 - - - - - EDGE OF ROAD

SUBD NAME COLUMBIA CORPORATE PARK  
 PARCEL A:24  
 SEC. N/A AREA N/A  
 PLAT: 11615  
 STREET NAME: 8870 MCGAW ROAD  
 CAP. PROJ. NO. \_\_\_\_\_  
 CONTRACT NO. \_\_\_\_\_  
 FIELD BOOK NO. \_\_\_\_\_  
 SCALE: 1" = 50'

PREPARED BY:  
 GEORGE W. STEPHENS, JR. AND  
 ASSOCIATES, INC.  
 655 KENILWORTH DRIVE, STE. 100  
 TOWSON, MARYLAND 21284  
 (410) 825-8120

4			8		
3			7		
2			6		
1			5		
NO.	REVISION	DATE	NO.	REVISION	DATE