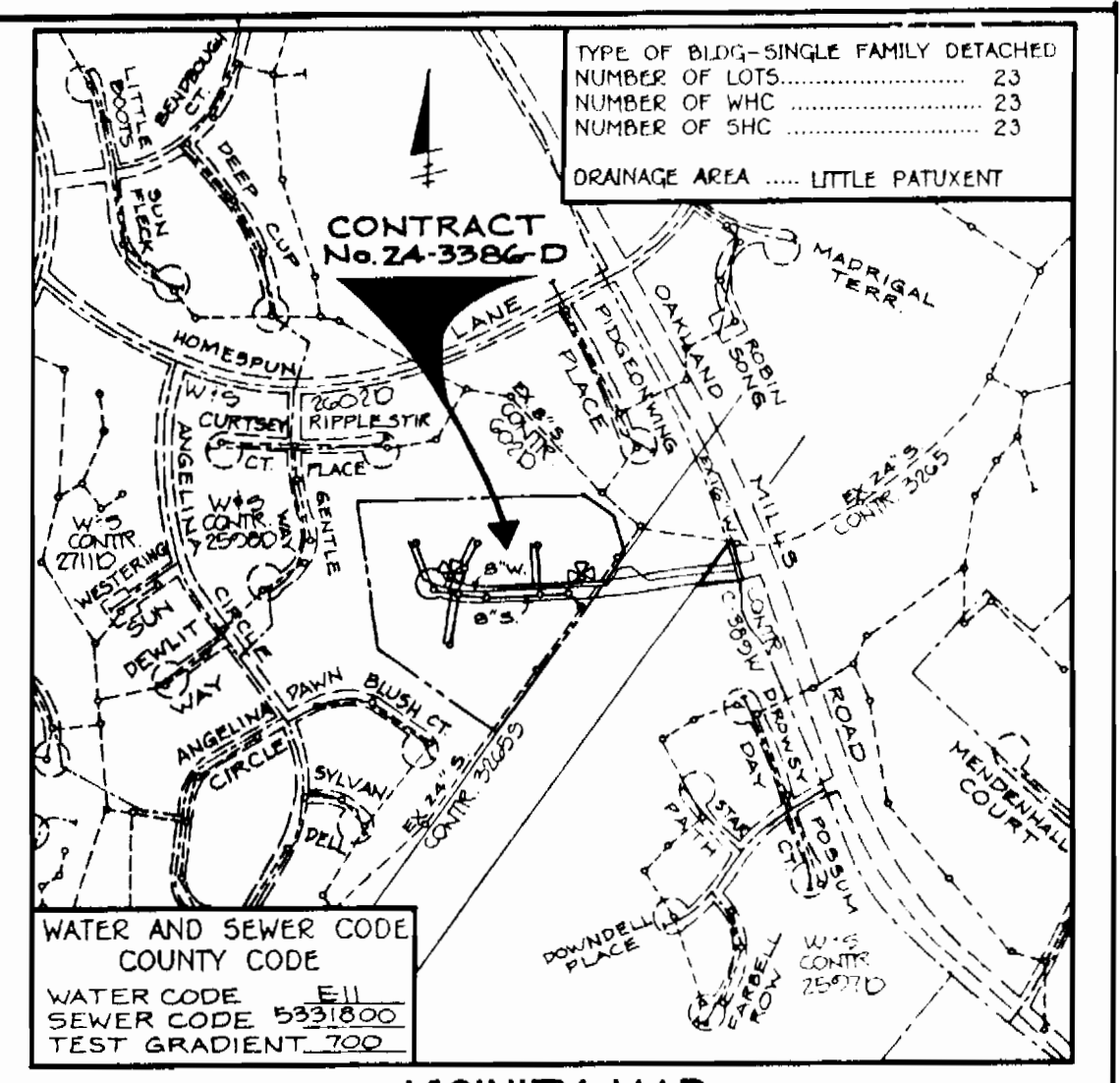
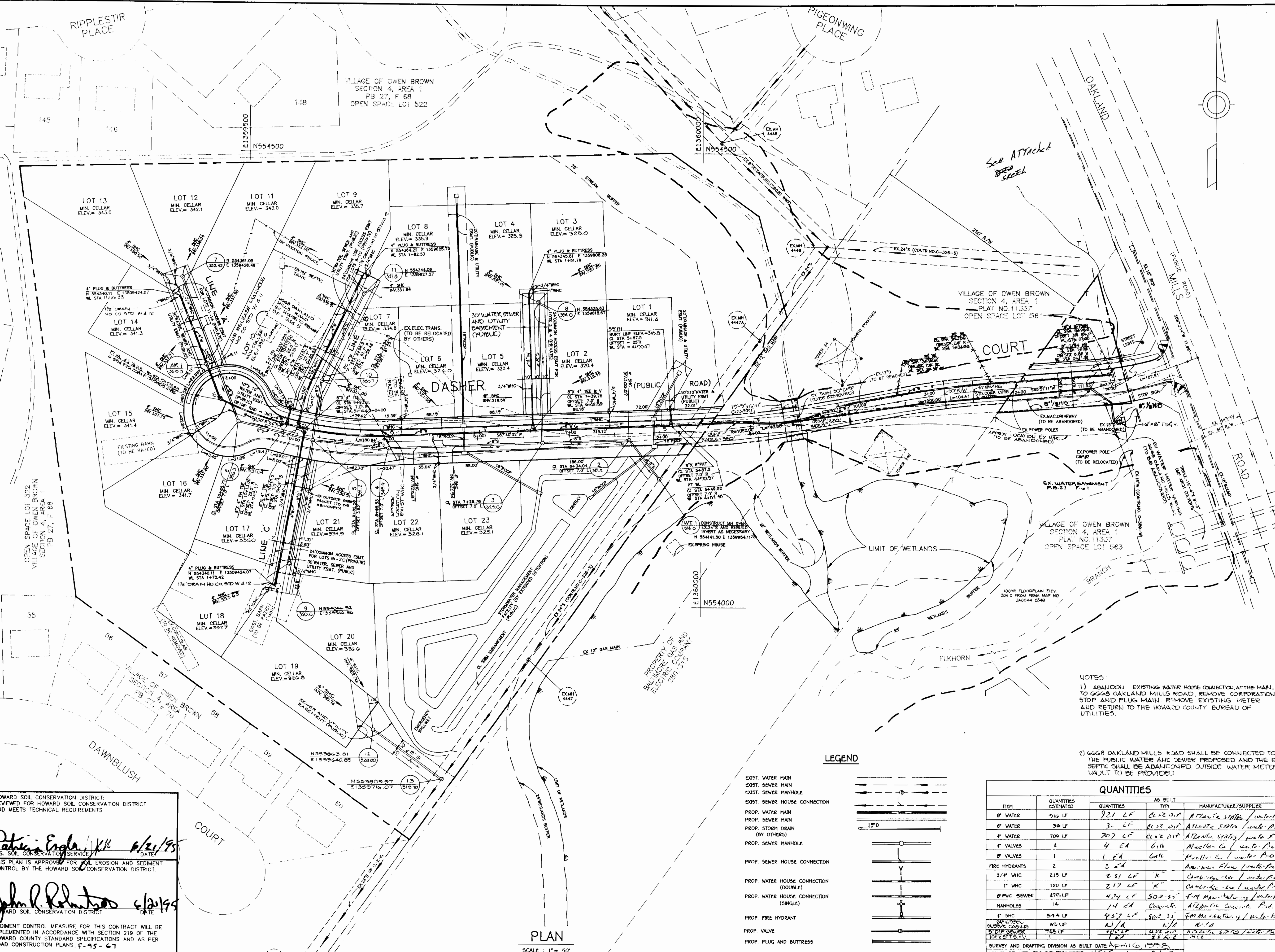


3386 WS/1 Dasher Homestead (Lots 1-27)



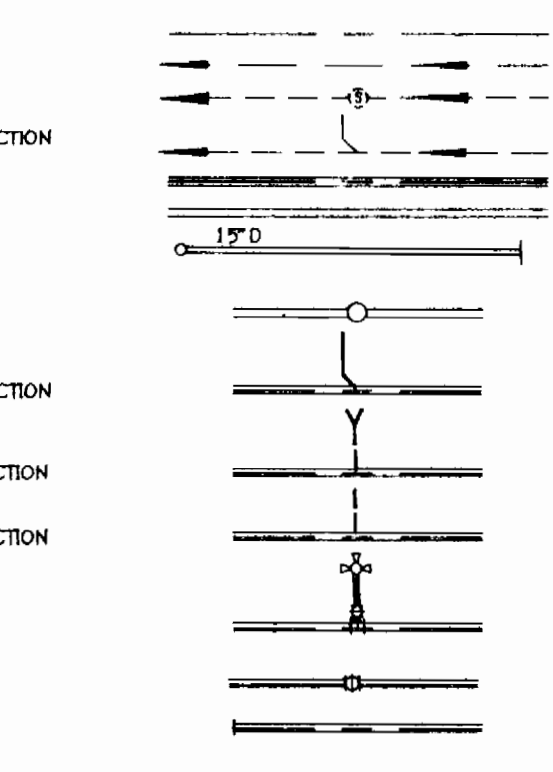
WATER AND SEWER CODE
 COUNTY CODE
 WATER CODE
 SEWER CODE 5931800
 TEST GRADIENT 200

- GENERAL NOTES**
- APPROXIMATE LOCATION OF EXISTING MAINS ARE SHOWN. THE CONTRACTOR SHALL TAKE ALL NECESSARY PRECAUTIONS TO PROTECT EXISTING MAINS AND SERVICES AND MAINS UNEXPECTEDLY SUPPLY. ANY DAMAGE INCURRED SHALL BE REPAIRED IMMEDIATELY TO THE SATISFACTION OF THE ENGINEER AT THE CONTRACTOR'S EXPENSE.
 - ALL HORIZONTAL CONTROLS ARE BASED ON MARYLAND STATE COORDINATES.
 - ALL VERTICAL CONTROLS ARE BASED ON U.S.G.C. DATA.
 - ALL PIPE ELEVATIONS SHOWN ARE INVERT ELEVATIONS.
 - CLEAR ALL UTILITIES BY A MINIMUM OF 6" CLEAR ALL POLES BY 2'-0" MINIMUM OF TUNNEL AS REQUIRED. THE OWNER HAS CONTACTED THE UTILITY COMPANIES AND HAS MADE ARRANGEMENTS FOR BRACING OF POLES AS SHOWN ON THE DRAWINGS. IN THE EVENT THE CONTRACTOR'S WORK REQUIRES THE BRACING OF ADDITIONAL POLES, ANY COST INCURRED BY THE OWNER FOR THE BRACING OF ADDITIONAL POLES OR DAMAGES SHALL BE DEDUCTED FROM MONEY OWED TO THE CONTRACTOR. THE CONTRACTOR SHALL COORDINATE WITH THE UTILITY COMPANIES TO SCHEDULE THE BRACING OF THE POLES.
 - FOR DETAILS NOT SHOWN ON THE DRAWINGS, AND FOR MATERIALS AND CONSTRUCTION METHODS, USE HOWARD COUNTY DESIGN MANUAL VOLUME IV, STANDARD SPECIFICATIONS AND DETAILS FOR CONSTRUCTION. THE CONTRACTOR SHALL HAVE A COPY OF VOLUME IV ON THE JOB.
 - WHERE TEST PITS HAVE BEEN MADE ON EXISTING UTILITIES, THEY ARE NOTED BY THE SYMBOL AT THE LOCATION OF THE TEST PIT. NOTE OR NOTES CONTAINING THE RESULTS OF THE TEST PIT OR PITS IS INCLUDED ON THE DRAWINGS. EXISTING UTILITIES IN THE VICINITY OF THE PROPOSED WORK FOR WHICH TEST PITS HAVE NOT BEEN DUG SHALL BE LOCATED BY THE CONTRACTOR TWO WEEKS IN ADVANCE OF CONSTRUCTION OPERATIONS AT HIS OWN EXPENSE. CONTRACTOR SHALL NOTIFY THE FOLLOWING UTILITY COMPANIES OR AGENCIES AT LEAST FIVE WORKING DAYS BEFORE STARTING WORK SHOWN ON THESE PLANS:
- STATE HIGHWAY ADMINISTRATION.....531-5533
 - BALTIMORE GAS & ELECTRIC CO.....850-4620
 - BALTIMORE GAS & ELECTRIC CO.....850-4620
 - BALTIMORE GAS & ELECTRIC CO.....850-4620
 - UNDERGROUND DAMAGE CONTROL.....787-9068
 - MISS UTILITY.....1-800-257-7777
 - COLONIAL PIPELINE CO.....795-1390
 - BUREAU OF UTILITIES
 - HOWARD CO. DEPT. OF PUBLIC WORKS.....313-4900
- TREES AND SHRUBS ARE TO BE PROTECTED FROM DAMAGE TO MAXIMUM EXTENT. TREES AND SHRUBS LOCATED WITHIN THE CONSTRUCTION STRIP ARE NOT TO BE REMOVED OR DAMAGED BY THE CONTRACTOR. CONTRACTOR SHALL REMOVE TREES, STUMPS AND ROOTS ALONG LINE OF EXCAVATION. PAYMENT FOR SUCH REMOVAL SHALL BE INCLUDED IN THE UNIT PRICE BID FOR CONSTRUCTION OF THE MAIN.
 - PLACE REGULATION "MEN WORKING" AND WARNING SIGNS AS REQUIRED TO COMPLY WITH MARYLAND STATE HIGHWAY ADMINISTRATION MANUAL OF TRAFFIC CONTROL FOR HIGHWAY MAINTENANCE OPERATIONS.
 - THE CONTRACTOR SHALL NOTIFY THE BUREAU OF HIGHWAYS, HOWARD COUNTY, AT (410) 313-2450 AT LEAST FIVE WORKING DAYS BEFORE ANY OPEN CUT OF ANY COUNTY ROAD OR BORING/JACKING OPERATION IN COUNTY ROADS FOR LAYING WATER/SEWER MAINS OR HOUSE CONNECTIONS. THE APPROVAL OF THESE DRAWINGS CONSTITUTE COMPLIANCE WITH DPW REQUIREMENTS PER SECTION 18.114(g) OF THE HOWARD COUNTY CODE.

NOTES:

- ABANDON EXISTING WATER HOUSE CONNECTION AT THE MAIN, TO 6668 OAKLAND MILLS ROAD, REMOVE CORPORATION STOP AND PLUG MAIN. REMOVE EXISTING METER AND RETURN TO THE HOWARD COUNTY BUREAU OF UTILITIES.
- 6668 OAKLAND MILLS ROAD SHALL BE CONNECTED TO THE PUBLIC WATER AND SEWER PROPOSED AND THE EXISTING SEPTIC SHALL BE ABANDONED OUTSIDE WATER METER VAULT TO BE PROVIDED.

LEGEND



ITEM	QUANTITIES ESTIMATED	AS BUILT		MANUFACTURER/SUPPLIER
		QUANTITIES	TYPE	
8" WATER	216 LF	221 LF	6" x 2" R.P.	ATLANTA STATES / WATER
6" WATER	30 LF	3- LF	6" x 2" R.P.	ATLANTA STATES / WATER
6" WATER	709 LF	707 LF	6" x 2" R.P.	ATLANTA STATES / WATER
4" VALVES	4	4 EA	6" R	Cambridge / WATER
4" VALVES	1	1 EA	6" R	Cambridge / WATER
FIRE HYDRANTS	2	2 EA	6" R	Cambridge / WATER
3/4" WHC	215 LF	215 LF	"K"	Cambridge / WATER
1" WHC	120 LF	217 LF	"K"	Cambridge / WATER
8" PVC SEWER	475 LF	474 LF	502 55"	ATLANTA STATES / WATER
MANHOLES	14	14 EA	60" x 60"	ATLANTA STATES / WATER
4" SHC	544 LF	437 LF	602 33"	ATLANTA STATES / WATER
2" STRENGTH REDUCED	745 LF	745 LF	437 33"	ATLANTA STATES / WATER

- PART II - WATER**
- ALL WATER MAINS TO BE D.I.P. CLASS 52 UNLESS OTHERWISE NOTED.
 - TOPS OF ALL WATER MAINS TO HAVE A MINIMUM OF 3-1/2" COVER UNLESS OTHERWISE NOTED.
 - VALVES ADJACENT TO TEES SHALL BE STRAPPED TO TEES.
 - ALL FITTINGS SHALL BE BUTTRISSED OR ANCHORED WITH CONCRETE IN ACCORDANCE WITH THE STANDARD DETAILS UNLESS OTHERWISE PROVIDED FOR ON THE DRAWINGS.
 - FIRE HYDRANTS SHALL BE SET TO THE BURY LINE ELEVATIONS SHOWN ON THE DRAWINGS. ALL FIRE HYDRANTS SHALL BE STRAPPED AND BUTTRISSED WITH CONCRETE IN ACCORDANCE WITH STANDARD DETAILS. SOIL AROUND THE FIRE HYDRANT SHALL BE COMPACTED IN ACCORDANCE WITH SECTION 1000 AND 1005 OF THE STANDARD SPECIFICATIONS. THE CONTRACTOR SHALL NOT OPERATE ANY WATER MAIN VALVES ON THE EXISTING WATER SYSTEM.
 - ALL WATER HOUSE CONNECTIONS SHALL BE IN INSET METER SETTING UNLESS OTHERWISE NOTED ON PLANS OR IN SPECIFICATIONS.
- PART III - SEWER**
- ALL SEWER MAINS SHALL BE D.I.P. RCP, VCPX, CSPX, RCP AND P.V.C. UNLESS OTHERWISE NOTED.
 - ALL MANHOLES SHALL BE 4' - 0" INSIDE DIAMETER UNLESS OTHERWISE NOTED.
 - FORCE MAINS SHALL BE D.I.P. ONLY.
 - MANHOLES SHOWN WITH 12" AND 16" WALLS ARE FOR BRICK MANHOLES ONLY.
 - MANHOLES DESIGNATED W.T. IN PLAN AND PROFILE SHALL HAVE WATER-TIGHT FRAME AND COVERS. STANDARD DETAIL 05.52. WHERE WATER-TIGHT MANHOLE FRAME AND COVER IS USED, SET TOP OF FRAME 1" - 6" ABOVE FINISHED GRADE UNLESS OTHERWISE NOTED ON THE DRAWINGS.
 - HOUSE(S) WITH THE SYMBOL "C.N.S." INDICATES THAT CELLAR CANNOT BE SERVED.

HOWARD SOIL CONSERVATION DISTRICT
 REVIEWED FOR HOWARD SOIL CONSERVATION DISTRICT
 AND MEETS TECHNICAL REQUIREMENTS

Patricia Engle, JH 6/21/95
 U.S. SOIL CONSERVATION SERVICE
 DATE

John P. Roberts 6/20/95
 HOWARD SOIL CONSERVATION DISTRICT
 DATE

SEDIMENT CONTROL MEASURE FOR THIS CONTRACT WILL BE
 IMPLEMENTED IN ACCORDANCE WITH SECTION 219 OF THE
 HOWARD COUNTY STANDARD SPECIFICATIONS AND AS PER
 ROAD CONSTRUCTION PLANS, P-45-61

DEPARTMENT OF PUBLIC WORKS
 HOWARD COUNTY, MARYLAND

James A. Lewis 6/23/95
 DIRECTOR OF PUBLIC WORKS DATE

Robert J. ... 6/23/95
 CHIEF, BUREAU OF ENGINEERING DATE

Robert J. ... 6/23/95
 CHIEF, LAND DEVELOPMENT DIVISION DATE

T.S.A. GROUP INC.
 planning • engineering • surveying
 2480 Baltimore National Pike • Suite 418
 Ellicott City, Maryland 21043

DES: JH/GWF	
DRN: JH	
CHK: DAM	
DATE: JCO	REVISION WATER ALIGNMENT ACROSS DGC R/W REVISE TOP ELEV
BY: NO.	REVISIONS

WATER AND SEWER PLAN

600 SCALE MAP NO. 36 BLOCK NO. 22

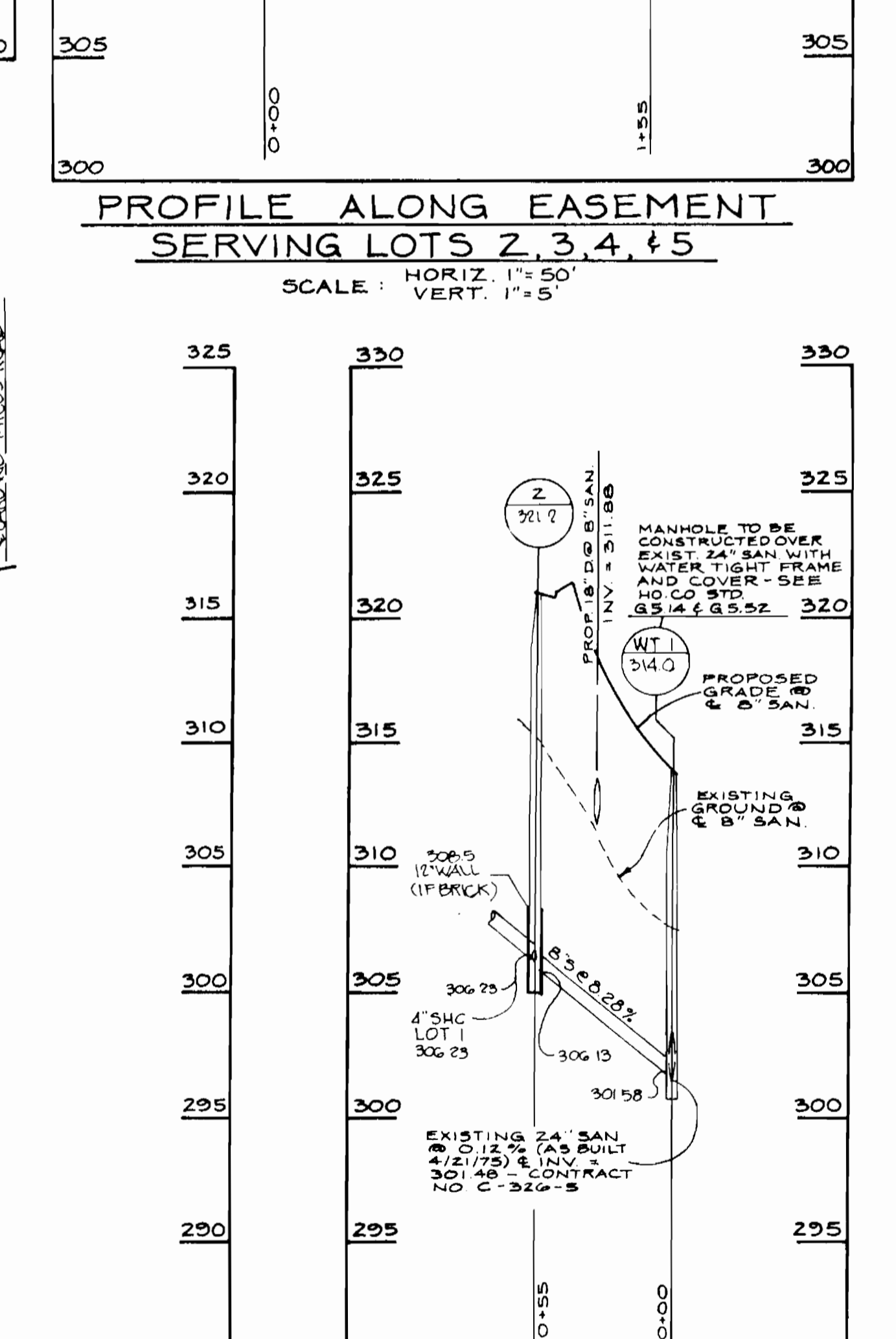
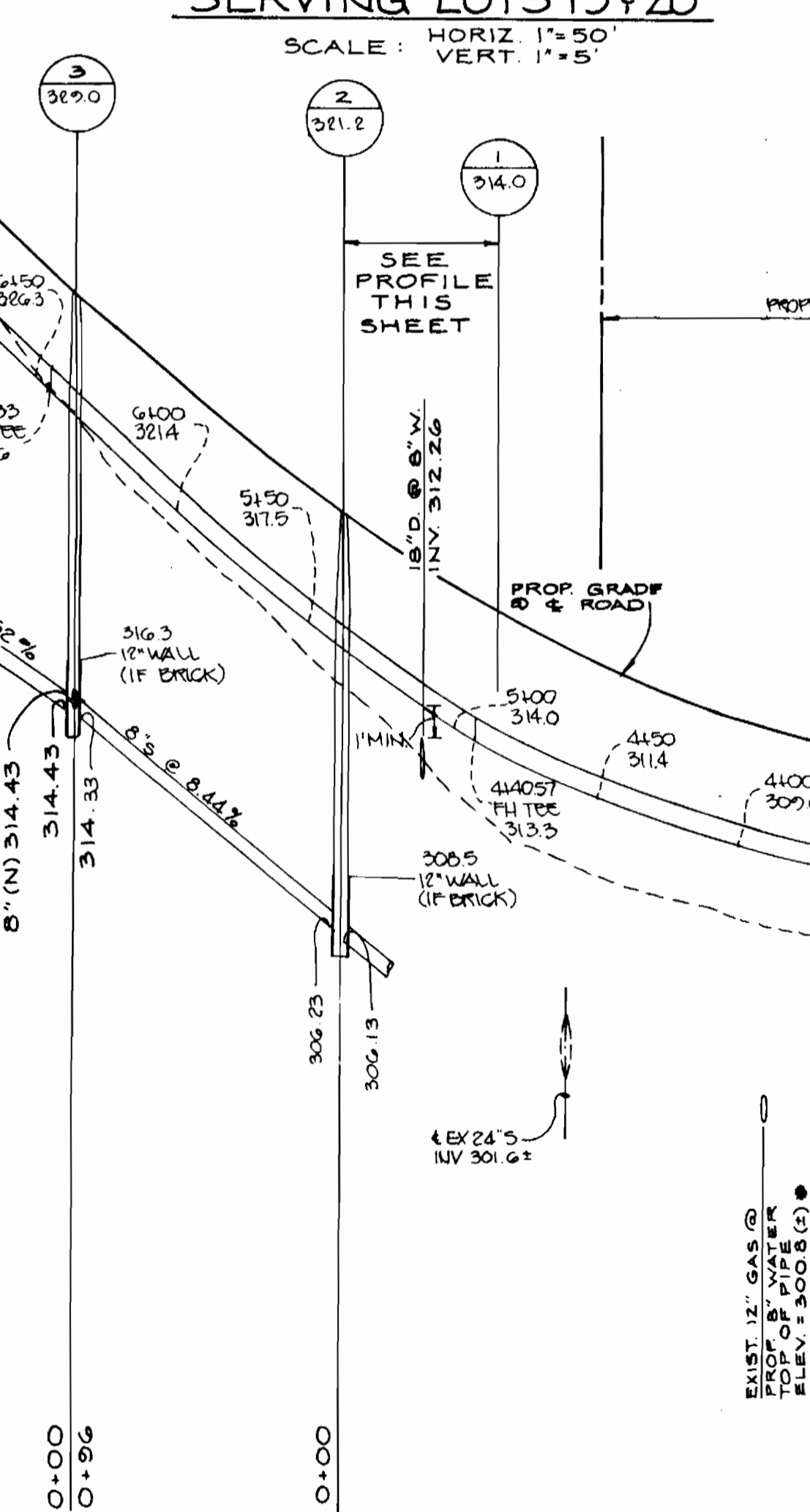
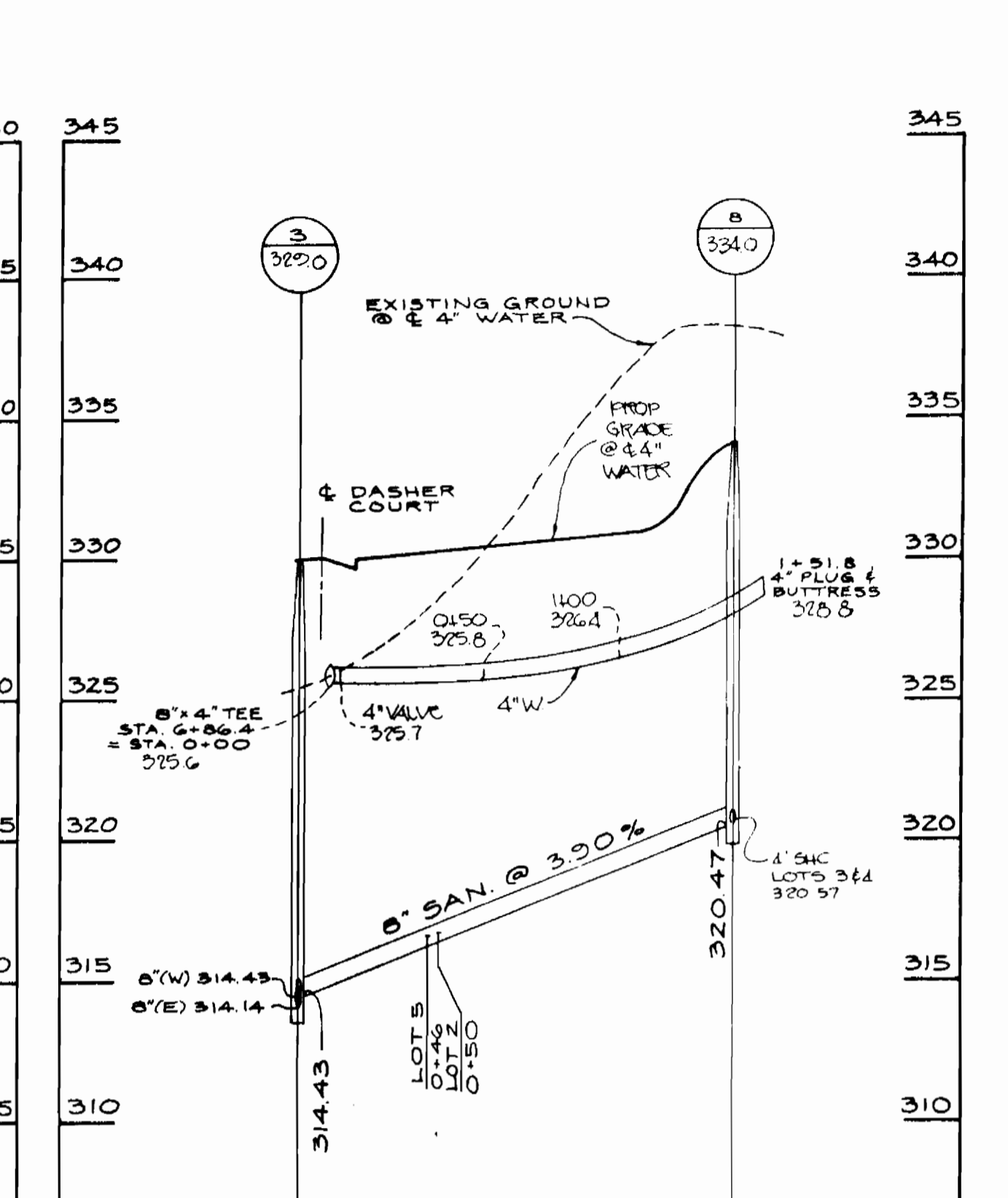
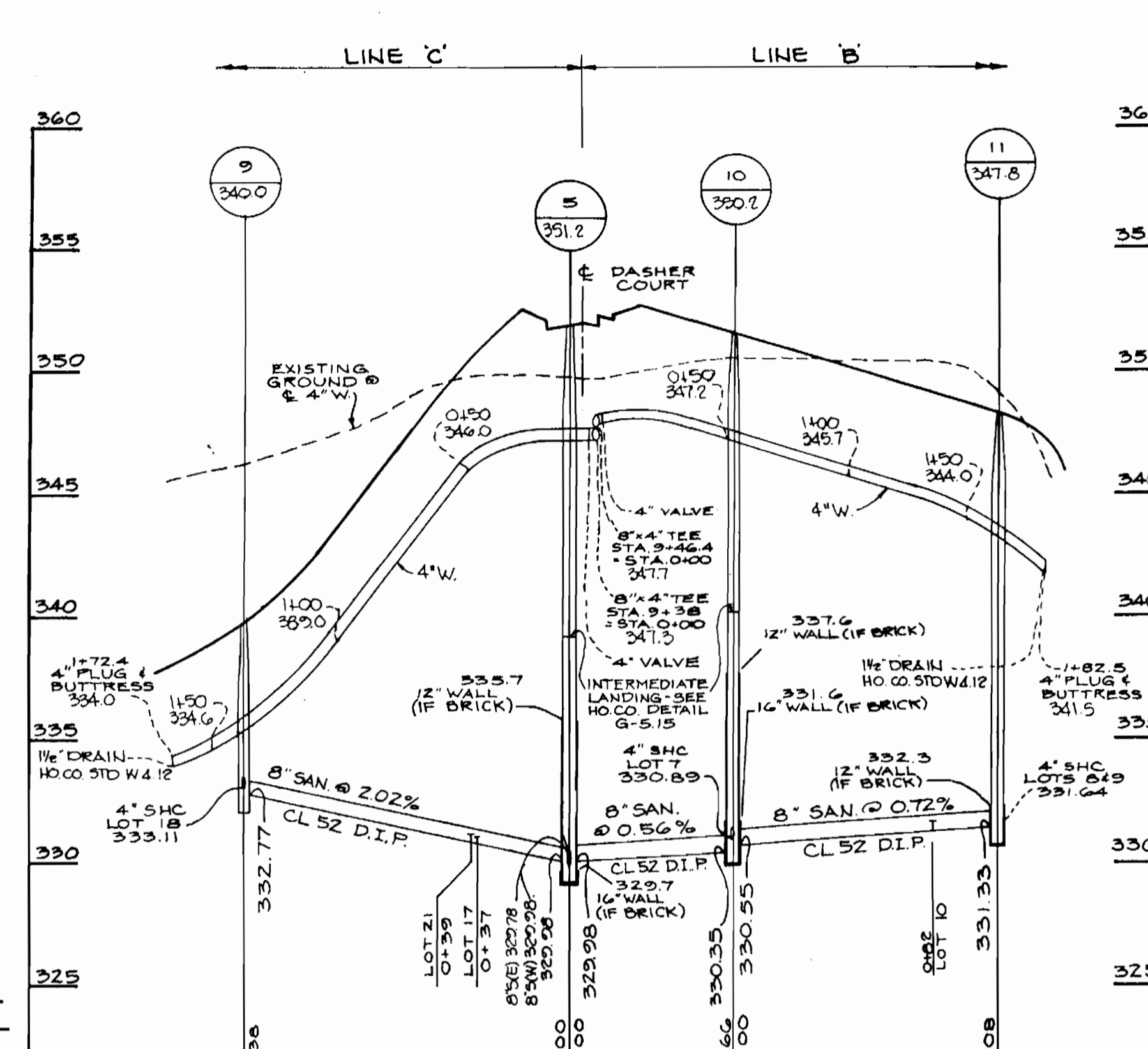
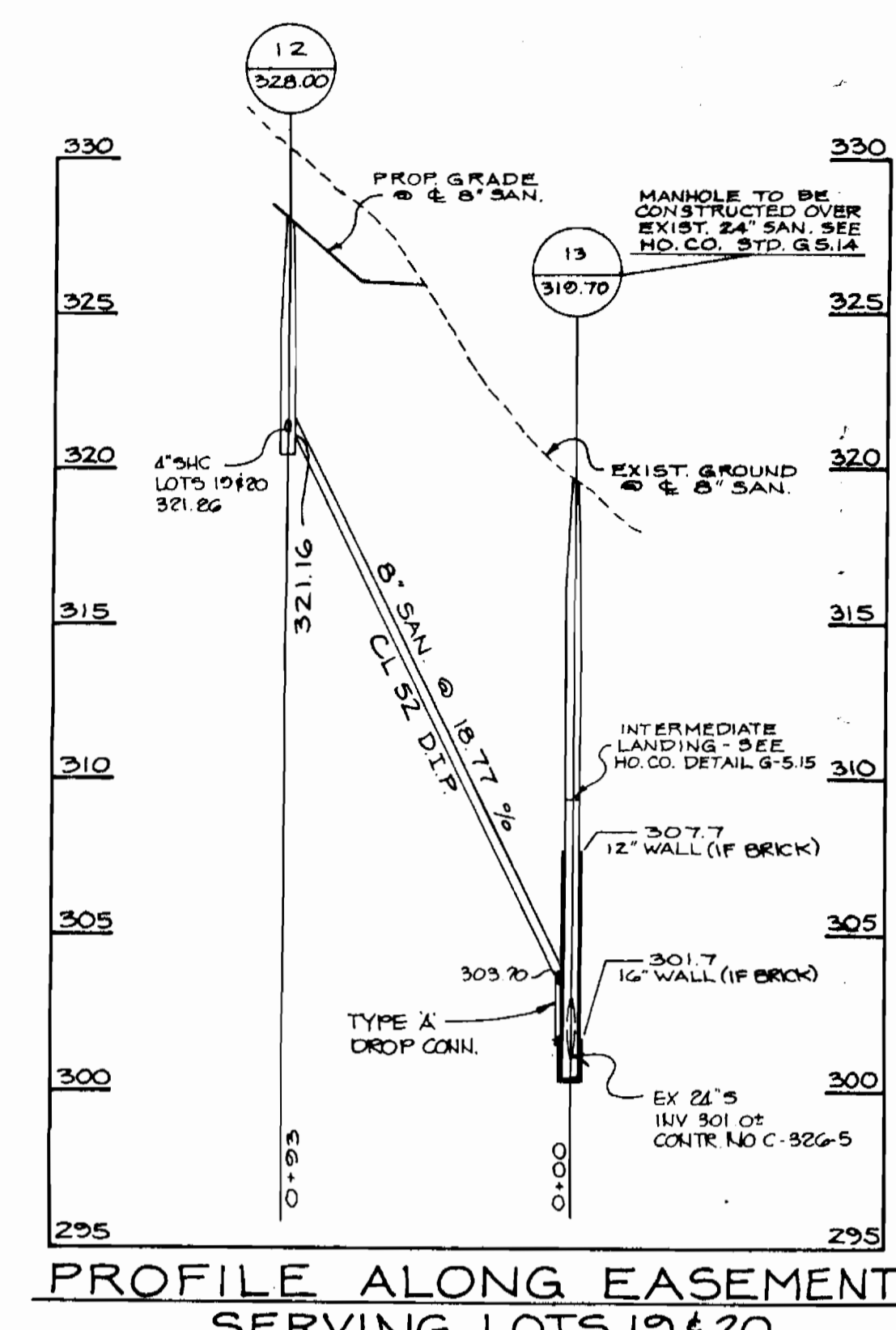
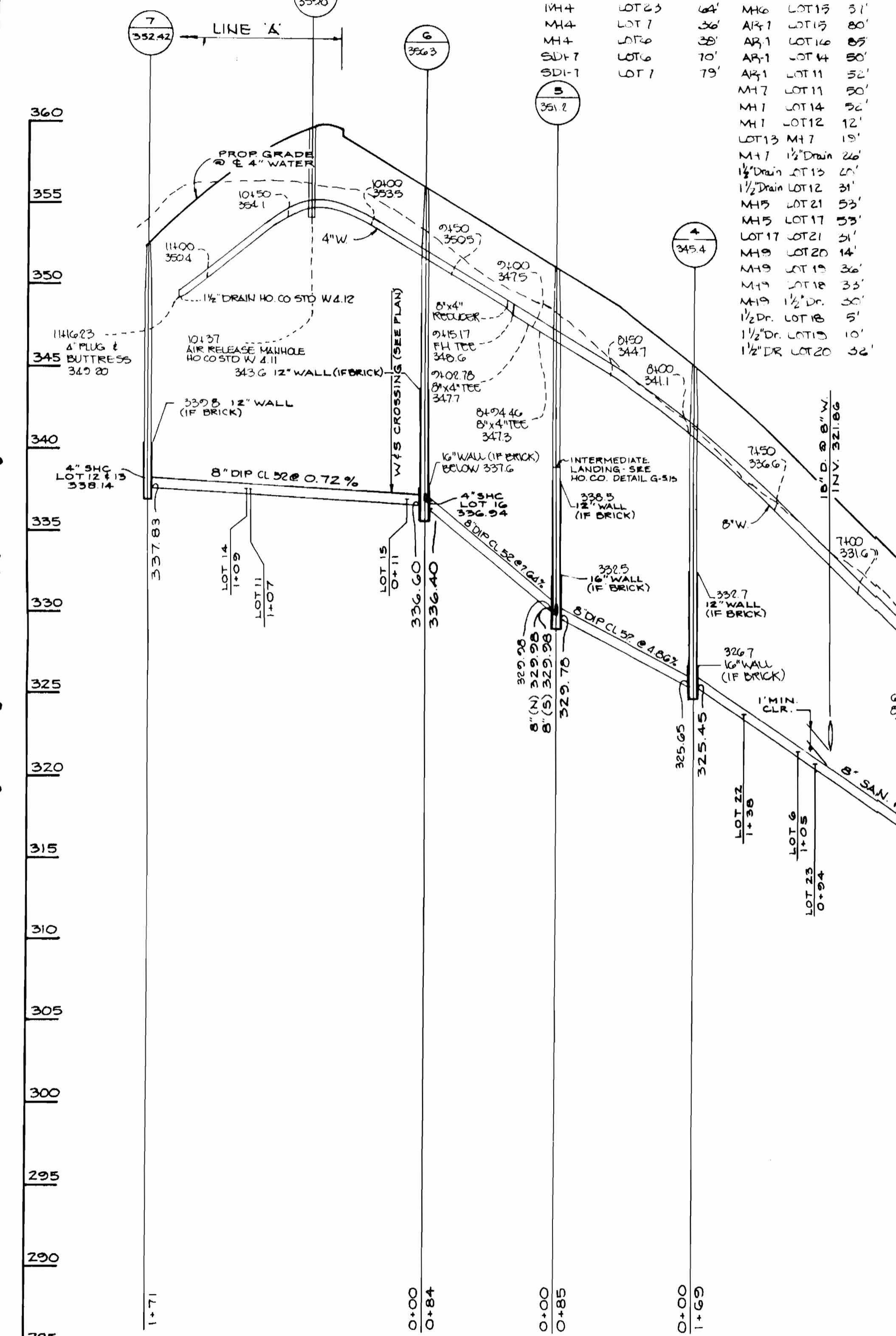
DASHER HOMESTEAD
 LOTS 1 - 27

ELECTION DISTRICT NO. 6
CONTRACT NO. 24-3386-D

SCALE: 1" = 50'
 SHEET 1 OF 2

3386 ws/2 DASHER HOMESTEAD

SEWER AS-BUILTS				WATER AS-BUILTS			
FROM:	TO LOT:	DIST.:	DIST.:	FROM:	TO LOT:	DIST.:	DIST.:
MH-2	1	35'	MH-10	10	78'	LOT 13	12
SDI-4	1	32'	MH-11	10	37'	MH-5	21
MH-3	2	37'	MH-11	8	19'	MH-5	11
MH-3	5	55'	MH-11	9	25'	LOT 17	21
LOT 2	5	32'	LOT 8	32'	MH-9	18	
MH-8	3	15'	MH-6	16	57'	1/2" Drain	
MH-8	4	27'	MH-6	15	41'	MH-12	
LOT 4	3	29'	LOT 15	16	47'	MH-12	
SDI-17	6	31'	A-3-1	14	39'	LOT 19	
MH-4	6	71'	A-3-1	11	42'		
MH-4	22	36'	MH-7	11	61'		
MH-4	23	75'	MH-7	14	62'		
SDI-6	22	18'	MH-7	12	14'		
MH-10	7	13'	MH-7	13	21'		
SDI-6	22	58'					
MH-5	7	28'					



PROFILE ALONG DASHER COURT SCALE: HORIZ. 1"=50' VERT. 1"=5'

DEPARTMENT OF PUBLIC WORKS
HOWARD COUNTY, MARYLAND
DATE: 6/23/95
DATE: 6/15/95

T.S.A. GROUP INC.
planning • engineering • surveying
8480 Baltimore National Pike • Suite 418
Ellicott City, Maryland 21043

DES:	GWF/JH		
DRN:	JFB/JR		
CHK:	DAM		
DATE:	JCO	REVERSE PROFILE TO MATCH REVERSED ROAD PROFILES AND ADJUST	6-11-95
BY:	NO.	REVISIONS	DATE

WATER AND SEWER
PROFILES AND DETAILS
600 SCALE MAP NO. 36 BLOCK NO. 22

DASHER HOMESTEAD
LOTS 1 - 27
ELECTION DISTRICT NO. 6
CONTRACT NO. 24-3386-D
SHEET 2 OF 2