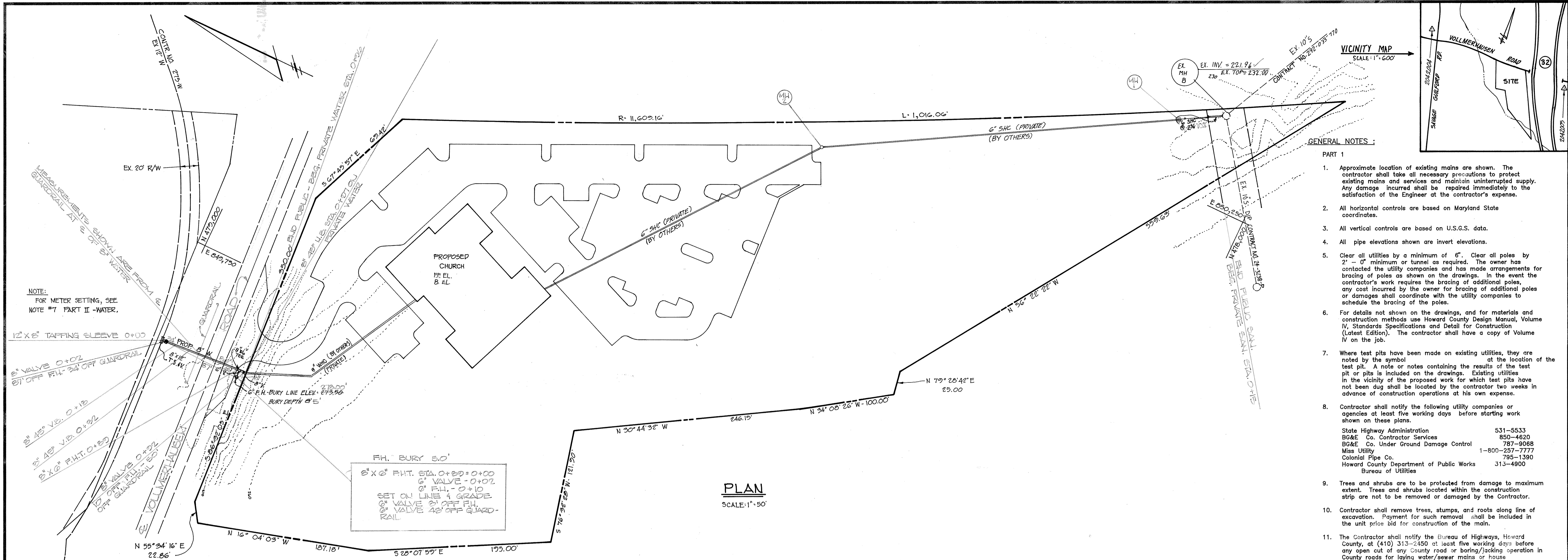


ws/1 Bethel Assembly of God 3379



- GENERAL NOTES:**
- PART 1**
- Approximate location of existing mains are shown. The contractor shall take all necessary precautions to protect existing mains and services and maintain uninterrupted supply. Any damage incurred shall be repaired immediately to the satisfaction of the Engineer at the contractor's expense.
 - All horizontal controls are based on Maryland State coordinates.
 - All vertical controls are based on U.S.G.S. data.
 - All pipe elevations shown are invert elevations.
 - Clear all utilities by a minimum of 6". Clear all poles by 2' - 0" minimum or tunnel as required. The owner has contacted the utility companies and has made arrangements for bracing of poles as shown on the drawings. In the event the contractor's work requires the bracing of additional poles, any cost incurred by the owner for bracing of additional poles or damages shall coordinate with the utility companies to schedule the bracing of the poles.
 - For details not shown on the drawings, and for materials and construction methods use Howard County Design Manual, Volume IV, Standards Specifications and Detail for Construction (Latest Edition). The contractor shall have a copy of Volume IV on the job.
 - Where test pits have been made on existing utilities, they are noted by the symbol at the location of the test pit. A note or notes containing the results of the test pit or pits is included on the drawings. Existing utilities in the vicinity of the proposed work for which test pits have not been dug shall be located by the contractor two weeks in advance of construction operations at his own expense.
 - Contractor shall notify the following utility companies or agencies at least five working days before starting work shown on these plans.

State Highway Administration	531-5533
BG&E Co. Contractor Services	850-4620
BG&E Co. Under Ground Damage Control	787-9068
Miss Utility	1-800-257-7777
Colonial Pipe Co.	795-1390
Howard County Department of Public Works	313-4900
Bureau of Utilities	
 - Trees and shrubs are to be protected from damage to maximum extent. Trees and shrubs located within the construction strip are not to be removed or damaged by the Contractor.
 - Contractor shall remove trees, stumps, and roots along line of excavation. Payment for such removal shall be included in the unit price bid for construction of the main.
 - The Contractor shall notify the Bureau of Highways, Howard County, at (410) 313-2450 at least five working days before any open cut of any County road or boring/jacking operation in County roads for laying water/sewer mains or house connections. The approval for these drawings will constitute compliance with DPW requirements for Section 15-114(c) of the Howard County Codes.
- PART II - WATER**
- All water mains to be D.I.P. Class 52 unless otherwise noted.
 - Tops of all water mains to have a minimum 3-1/2" cover unless otherwise noted.
 - Valves adjacent to tees shall be strapped to tees.
 - All fittings shall be buttressed or anchored with concrete in accordance with the Standard Details unless otherwise provided for on the drawings.
 - Fire hydrants shall be set to the bury line elevations shown on the drawings. All fire hydrants shall be restrained, as per STD Details W.1.11 and W.2.13 and buttressed with concrete in accordance with Standard Details. Soil around the fire hydrant shall be compacted in accordance with Section 1000 and 1005 of the Standard and Specifications.
 - The contractor shall not operate any water main valves on the existing water system.
 - All water house connections shall be for inside meter setting, 8" diameter with 1 1/2" domestic line.
- PART III - SEWER**
- All sewer mains shall be DIP, RCP, VCPX, CSPX, RCCP, and P.V.C. unless otherwise noted.
 - All manholes shall be 4' - 0" inside diameter unless otherwise noted.
 - Force mains shall be D.I.P. only.
 - Manholes shown with 12" and 16" walls are for brick manholes only.
 - Manholes designated W.T. in plan and profile shall have watertight frame and covers, Standard Detail GS.52. Where watertight manhole frame and cover is used, set top of frame 1" - 6" above finished grade unless otherwise noted on the drawings.
 - House(s) with the symbol "C.N.S." indicates that cellar cannot be served.
 - All sewer house connections to be 6".

NOTE:
FOR METER SETTING, SEE
NOTE #7 PART II - WATER.

PLAN
SCALE: 1" = 50'

WATER AND SEWER CODE COUNTY USE

WATER NO. : COI

TEST GRADIENT: 550

SEWER NOS : 428.0000

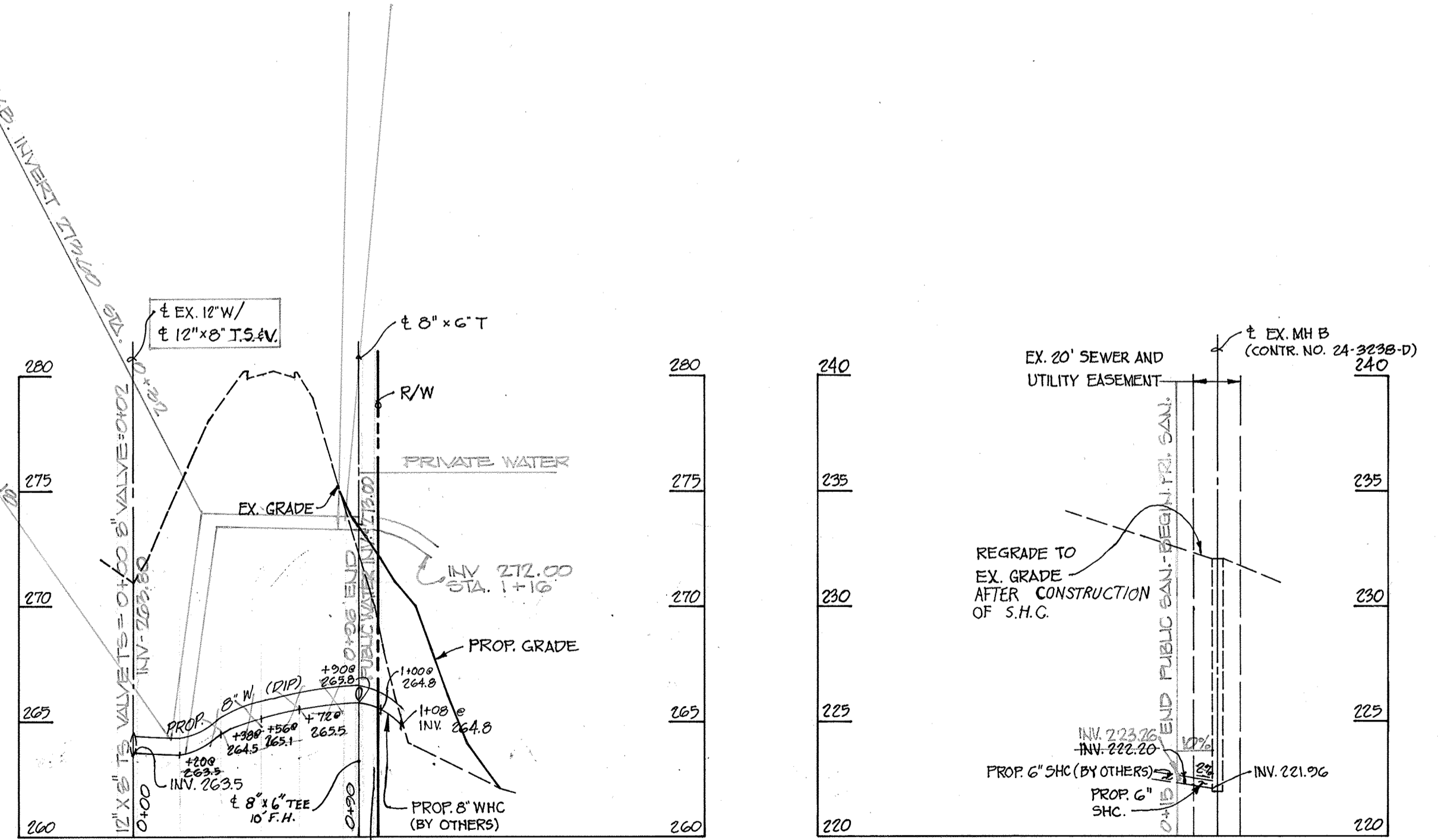
ITEMS	QUANTITIES ESTIMATED	AS-BUILT		
		QUANTITIES	TYPE	MANUFACTURER / SUPPLIER
8" WATER	107 LINEAR FEET	02 LF.	D.I.P.	GRIFFIN
6" FIRE HYDRANT	1 EACH	1 EA.	CAST IRON	KEENEY
8" x 6" TEE	1 EACH	1 EA.	D.I.P.	GRIFFIN
6" SHC	16 LINEAR FEET	13 LF.	P.V.C.	ETI/AMERICAN
8" x 12" TAPPING SLEEVE	1 EACH	1 EA.	D.I.P.	GLW

NAME OF UTILITY CONTRACTOR : MORRISCO CONSTRUCTION CO., INC.

CHECKBOX

AS-BUILTS DATE

SURVEY AND DRAFTING DIVISION



PROFILES
SCALE: HOR: 1" = 50'
VER: 1" = 5'

Sediment control measures for this contract will be implemented in accordance with Section 219 of the Specifications and as shown on SDP-24-13

[Signature] 10/5/94
Date
HOWARD SOIL CONSERVATION DISTRICT

Reviewed for Howard Soil Conservation District and meets technical requirements.

[Signature] 10/5/94
Date
U.S. SOIL CONSERVATION SERVICE

This development is approved soil erosion and sediment control by the Howard Soil Conservation District.

[Signature] 10/5/94
Date
HOWARD SOIL CONSERVATION DISTRICT

DEPARTMENT OF PUBLIC WORKS
HOWARD COUNTY, MARYLAND

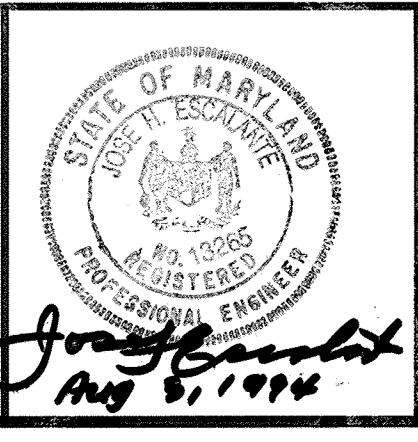
[Signature] 10/5/94
DIRECTOR OF PUBLIC WORKS DATE

[Signature] 10/5/94
CHIEF, BUREAU OF ENGINEERING DATE

[Signature] 10-4-94
CHIEF, BUREAU OF UTILITIES DATE

[Signature] 10/5/94
CHIEF, LAND DEVELOPMENT DATE

Boender Associates
ENGINEERS • PLANNERS • SURVEYORS
3230 BETHANY LANE
ELLICOTT CITY, MD. 21042
(410) 465-7777 FAX: (410) 465-7966



DESIGNED:	JHE
DRAWN:	WCB
CHECKED:	JHE
DATE:	AUG, 1994
BY	No.
REVISION	DATE

600' SCALE MAP No.	30
BLOCK No.	5

BETHEL ASSEMBLY OF GOD

TAX MAP No. 47, PARCEL 34

6TH ELECTION DISTRICT, HOWARD COUNTY, MARYLAND

CONTRACT No. : 24-3379 D

SCALE AS SHOWN

SHEET 1 OF 1