

3369 ws/1 LYNDWOOD MANOR, 3/1

**BENCH MARKS:**

Ho. Co. Mon. # 2644005 EL. 416.981

Ho. Co. Mon. # 2644004 EL. 402.135

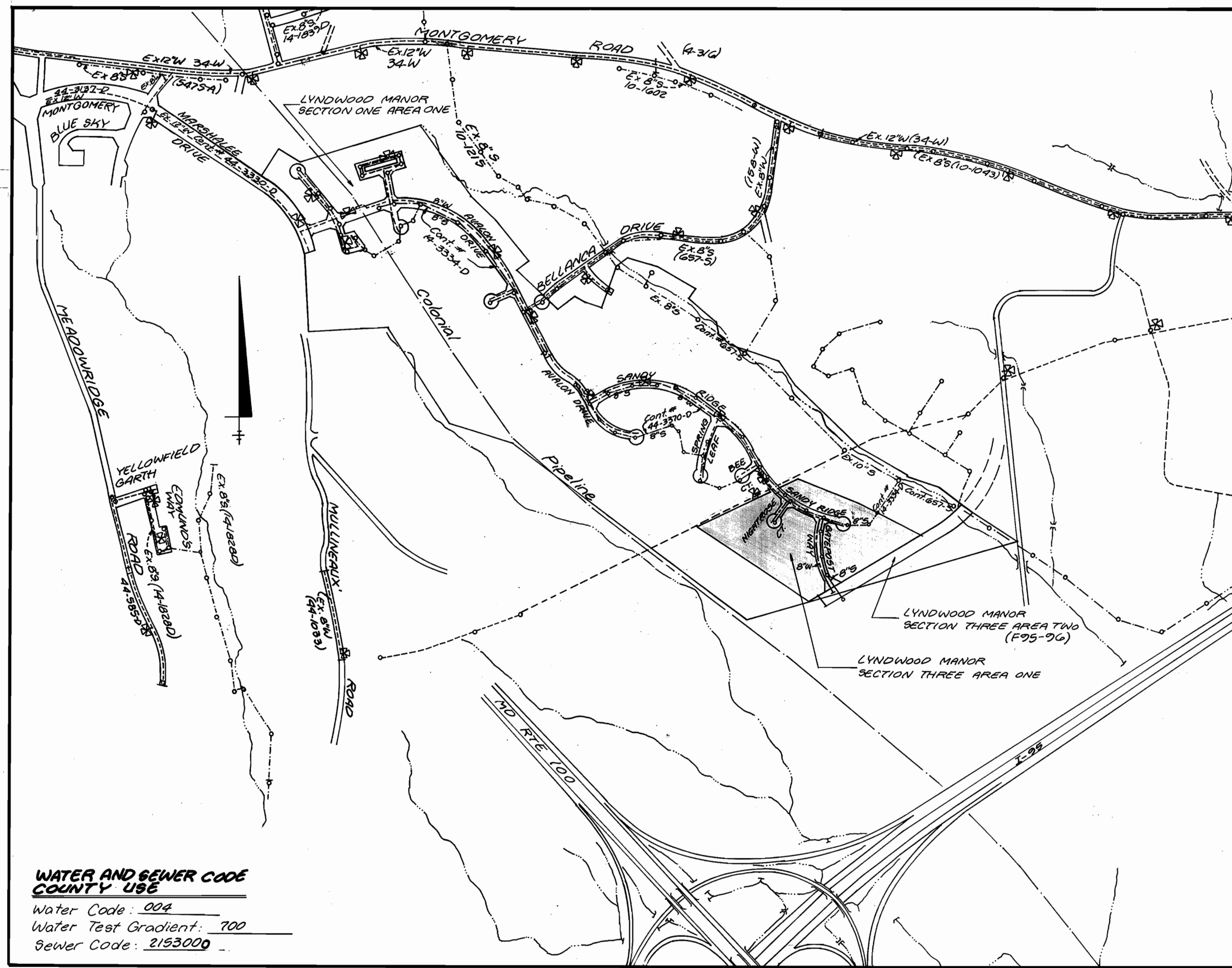
**DESCRIPTION**

Ho. Co. Mon. # 2644005 EL. 416.981  
Concrete Monument 2' Below Surface  
South Side Montgomery Road East  
Of Meadow Ridge Road.

Ho. Co. Mon. # 2644004 EL. 402.135  
Concrete Monument 1' Below Surface  
SW Corner Of Intersection Rte. 103 and  
Old Montgomery Road.

LOT No.	Inv. Main	Inv. Prop. Line	MCE
386	278.02	278.42	282.00
387	278.63	278.77	282.50
388	279.08	279.28	283.00
389	279.69	280.07	284.00
390	279.66	280.34	284.00
391	279.33	280.03	284.00
392	279.13	279.99	284.00
393	278.70	279.58	283.50
394	278.38	279.08	283.00
395	278.05	278.65	283.00
396	291.16	291.52	295.00
397	292.79	293.15	297.00
398	295.25	296.07	300.00
399	295.60	296.28	300.00
400	295.75	296.55	301.00
401	296.75	297.61	303.00
402	296.25	297.29	304.00
403	295.52	296.62	302.00
404	292.94	293.54	297.50
405	291.84	292.44	296.00
378	286.53	289.85	291.00

NOTE: Lots 376 - 377 ; 379 - 385 SHC WERE  
constructed under F94-94



**WATER AND SEWER CODE  
COUNTY USE**

Water Code: 004  
Water Test Gradient: 100  
Sewer Code: 2153000

Type of Buildings	SFD
Number of Lots/Parcels	30 SFD ; 2 Open Space
Number of W.H.C.'s	30
Number of S.H.C.'s	20
Drainage Area	Patapsco
Treatment Plant	Patapsco WWTP

**VICINITY MAP**

Scale: 1" = 600'

**WATER & SEWER CONSTRUCTION PLANS**

**LYNDWOOD MANOR  
SECTION THREE AREA ONE**

1st ELECTION DISTRICT HOWARD COUNTY, MARYLAND

CONTRACT No. 14-3369-D

SHEET NO.	TITLE
1	TITLE SHEET
2	PLAN VIEW - SANDY RIDGE & NIGHTROSE CT.
3	PROFILES

**PART I**

- Approximate location of existing mains are shown. The Contractor shall take all necessary precautions to protect existing mains and services and maintain uninterrupted supply. Any damage incurred shall be repaired immediately to the satisfaction of the Engineer at the Contractor's expense.
- All horizontal controls are based on Maryland State Coordinates.
- All vertical controls are based on U.S.G.S. data.
- All pipe elevations shown are invert elevations.
- Clear all utilities by a minimum of 6' clear all poles by 2'-0" minimum or tunnel as required. The owner has contacted the utility companies and has made arrangements for bracing of poles as shown on the drawings. In the event the Contractor's work requires the bracing of additional poles, any cost incurred by the owner for bracing of additional poles or damages shall be deducted from money owed the Contractor. The Contractor shall coordinate with the utility companies to schedule the bracing of the poles.
- For details not shown on the drawings and for materials and construction methods, use Howard County Design Manual, Volume IV, Standard Specifications and Details for Construction (Latest Edition). The Contractor shall have a copy of Volume IV on the job.
- Where test pits have been made on existing utilities, they are noted by the symbol  $\oplus$  at the location of the test pit. A note or notes containing the results of the test pit or pits is included on the drawings. Existing utilities in the vicinity of the proposed work for which test pits have not been dug, shall be located by the Contractor two weeks in advance of construction operations at his own expense.
- Contractor shall notify the following utility companies or agencies at least five working days before starting work shown on these plans:
  - a) State Highway Administration 531-5533
  - b) Baltimore Gas & Electric Co. 850-4620
  - c) Baltimore Gas & Electric Co. 787-9068
  - d) Miss Utility: 1-800-297-7777
  - e) Colonial Pipeline Company: 795-1300
  - f) Howard County Dept of Public Works
  - g) Bureau of Utilities: 315-4900
- Trees and shrubs are to be protected from damage to a maximum extent. Trees and shrubs within the construction strip are not to be removed or damaged by the Contractor.
- Contractor shall remove trees, stumps and roots along line of excavation. Payment for such removal shall be included in the unit price bid for construction of the main.

**PART II: WATER**

- All water mains to be D.I.P. Class 52 unless otherwise noted.
- Tops of all water mains to have a minimum of 3/2' cover unless otherwise noted.
- Valves adjacent to the trees shall be strapped to the trees.
- All fittings shall be buttressed or anchored with concrete in accordance with the Standard Details unless otherwise provided for on the drawings.
- Fire hydrants shall be set to the bury line elevations shown on the drawings. All fire hydrants shall be strapped and buttressed with concrete in accordance with the Standard Details. Soil around the fire hydrant shall be compacted in accordance with Section 1000 and 1005 of the Standard Specifications.
- The Contractor shall not operate any water main valves on the existing water system.
- All water house connections shall be for inside meter setting unless otherwise noted on plans or in specifications.

**PART III: SEWER**

- All sewer mains to be D.I.P. or PVC unless otherwise noted.
- All manholes shall be 4'-0" inside diameter unless otherwise noted.
- Force mains shall be D.I.P. only.
- Manholes designated W.T. in plan and profile shall have water-tight frame and covers, Standard Detail G952. Where water-tight manhole frame and cover is used, set top of frame 1'-0" above finished grade unless otherwise noted on the drawings.
- Houses with the symbol "C.N.S." indicates that cellar cannot be served.
- Manholes shown with 12" and 16" walls are for brick manholes only.

**QUANTITIES**

Name of Utility Contractor:		AS BUILT		
ITEM	QUANTITIES ESTIMATED	QUANTITIES	TYPE	MANUFACTURER / SUPPLIER
6" Water	354 LF	364	D.I.P. CL-52	GRIFFIN PIPE PRODUCTS CO.
8" Water	870 LF	850	D.I.P. CL-52	GRIFFIN PIPE PRODUCTS CO.
6" Valves	3 EA	3	WEDGE GATE	MUELLER CO. / US FILTER
8" Valves	3 EA	3	WEDGE GATE	MUELLER CO. / US FILTER
1 1/2" Drain	1 EA	-	-	-
8" x 6" Reducer	1 EA	1	SEB REDCOMP	UNION FOUNDRY / U.S. FILTER
8" x 8" Tee	1 EA	1	M.J. TEE COMP	UNION FOUNDRY / U.S. FILTER
FIRE HYDRANTS 3 1/2" FITTING	2 EA	2	CENTURION	MUELLER CO. / U.S. FILTER
3" Blow Off	1 EA	1	18" FIC	FORD METER BOX / U.S. FILTER
8" Sewer	731 LF	767	SOR 35 PVC	J.M. MANUFACTURING / U.S. FILTER
Manholes	4 EA	4	PRECAST	GRIFFORD-HILL COLIC PRODUCTS
4" SHC	655 LF	724	SOR 35 PVC	J.M. MANUFACTURING / U.S. FILTER
3/4" WHC	850 LF	954	K' COPPER	READING TUBE / U.S. FILTER
8" x 6" Tee	1 EA	1	M.J. TEE COMP	UNION FOUNDRY / U.S. FILTER
6" x 4" Tee	1 EA	1	M.J. TEE COMP	UNION FOUNDRY / U.S. FILTER
4" V	1 EA	1	WEDGE GATE	MUELLER CO. / U.S. FILTER
1" WHC	80 LF	100 LF	-	-

Check Box: Survey & Drafting Div.  
As Built Date: 5/12/99 K.C.I. RPD.

**QUANTITIES (CONT'D)**

NAME OF UTILITY CONTRACTOR:		AS BUILT		
ITEM	QUANTITIES ESTIMATED	QUANTITIES	TYPE	MANUFACTURER / SUPPLIER
4" Water	39 LF	42 LF	D.I.P.	GRIFFIN PIPE PRODUCTS CO.
4" x 3" Reducer	1 EA	1	LEB COMP.	UNION FOUNDRY
1 1/2" Water	40 LF	-	-	-
1 1/2" Drain	1 EA	-	-	-

Check Box: Survey & Drafting Div.  
As Built Date:

REVIEWED FOR HOWARD SOIL CONSERVATION DISTRICT AND MEETS TECHNICAL REQUIREMENTS

*Patricia Engler* 6/26/95  
Signature Date  
U.S. SOIL CONSERVATION SERVICE

THIS DEVELOPMENT PLAN IS APPROVED FOR SOIL EROSION AND SEDIMENT CONTROL BY THE HOWARD COUNTY SOIL CONSERVATION DISTRICT

*John P. Robinson* 6/26/95  
Signature Date  
HOWARD SOIL CONSERVATION DISTRICT

SEDIMENT CONTROL MEASURES FOR THIS CONTRACT WILL BE IMPLEMENTED IN ACCORDANCE WITH SECTION 210 OF THE STANDARD SPECIFICATION AND FINAL ROAD CONSTRUCTION PLANS F-94-95, F-96-104

DEPARTMENT OF PUBLIC WORKS  
HOWARD COUNTY, MD.

*James A. ...* 6/27/95  
DIRECTOR OF PUBLIC WORKS DATE

*Michael A. ...* 6-21-95  
CHIEF BUREAU OF UTILITIES DATE

*...* 6/27/95  
CHIEF PLANNING AND DEVELOPMENT DIVISION DATE

LAND DESIGN ENGINEERING, INC.

8835-N COLUMBIA 100 PARKWAY  
COLUMBIA, MARYLAND 21045  
(410) 713-1070 (301) 596-3424

DESIGNED TO: [ ]  
DRAWN BY: [ ]  
CHECKED BY: [ ]  
DATE: 1/94

REVISIONS:  
L.D.E. 1 Revise Quantities Table / Remove 6" Main & 14" 4-29-94  
L.D.E. 1 Revise SHC TABLE, ADD LOT 378 TO THIS CONTRACT 8-98  
L.D.E. 1 Revise Lot Numbers, # of Lots, CHARTS, QUANTITIES 4-25-97

**TITLE SHEET**

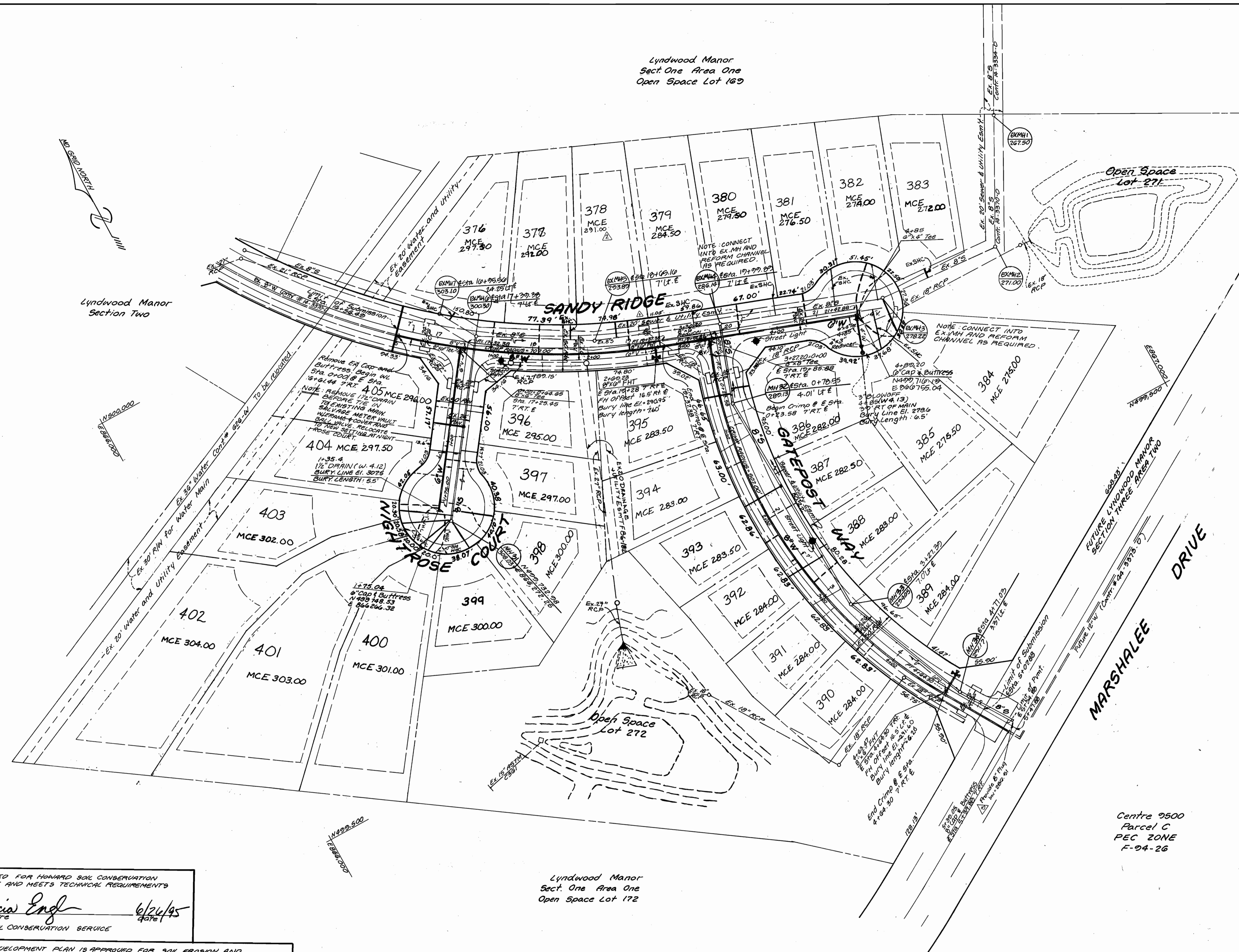
600 SCALE MAP No. 32 BLOCK 10

**LYNDWOOD MANOR**  
SECTION THREE AREA ONE  
LOT 376 THRU LOT 405  
1st ELECTION DISTRICT HOWARD COUNTY, MARYLAND  
CONTRACT NO. 14-3369-D

SCALE AS SHOWN  
SHEET 1 OF 3

33669 ws/2 LYNDWOOD MANOR, 3/1

Lyndwood Manor  
Sect. One Area One  
Open Space Lot 169



"ASBUILT DATA"

SEWER MEASUREMENTS				WATER MEASUREMENTS			
LOT #	FROM	S.H.C. STAKE	DIST.	LOT #	FROM	TO	DIST.
376	MANHOLE	"	11'	376	S.D. MH	CURB STOP	42'
376	CURB STOP	"	45'	376	SAN. MH	"	22'
377	SAN. MH	"	34'	377	S.D. MH	"	50'
377	S.D. MH	"	47'	377	SAN. MH	"	60'
378	INLET F.C.	"	27'	378	SAN. MH	"	42'
378	SAN. MH	"	21'	378	INLET BAK. CAP	"	15'
379	INLET F.C.	"	42'	379	INLET F.C.	"	15'
379	SAN. MH	"	40'	379	INLET F.C.	"	38'
380	SAN. MH	"	55'	380	SAN. MH	"	25'
380	INLET F.C.	"	80'	380	INLET F.C.	"	67'
381	CURB STOP	"	34'	381	S.H.C. STAKE	"	30'
381	CURB STOP	"	45'	381	S.H.C. STAKE	"	34'
382	S.H.C. STAKE	"	51'	382	S.H.C. STAKE	"	45'
382	SAN. MH	"	39'	382	SAN. MH	"	41'
383	SAN. MH	"	25'	383	SAN. MH	"	28'
383	INLET F.C.	"	51'	383	INLET F.C.	"	39'
384	SAN. MH	"	39'	384	SAN. MH	"	40'
384	INLET F.C.	"	10'	384	INLET F.C.	"	20'
385	SAN. MH	"	54'	385	SAN. MH	"	20'
385	INLET F.C.	"	30'	385	INLET F.C.	"	40'
386	INLET F.C.	"	20'	386	INLET F.C.	"	38'
386	SAN. MH	"	28'	386	SAN. MH	"	23'
387	CURB STOP	"	50'	387	S.H.C. STAKE	"	38'
387	CURB STOP	"	38'	387	S.H.C. STAKE	"	59'
388	INLET F.C.	"	51'	388	INLET F.C.	"	57'
388	CURB STOP	"	24'	388	SAN. MH	"	47'
387	INLET F.C.	"	43'	389	SAN. MH	"	45'
387	SAN. MH	"	19'	389	CURB STOP	"	51'
390	CURB STOP	"	15'	390	INLET F.C.	"	51'
390	SAN. MH	"	45'	390	SAN. MH	"	55'
391	M.H. SOWER	"	41'	391	SAN. MH	"	30'
391	CURB STOP	"	52'	391	CURB STOP	"	55'
392	CURB STOP	S.H.C. STAKE	8'	392	CURB STOP	CURB STOP	57'
392	CURB STOP	"	50'	392	CURB STOP	"	36'
393	CURB STOP	"	24'	393	CURB STOP	"	36'
393	CURB STOP	"	40'	393	CURB STOP	"	29'
394	SAN. MH	"	53'	394	SAN. MH	"	27'
394	CURB STOP	"	61'	394	CURB STOP	"	71'
395	SAN. MH	"	31'	395	HYDRANT	"	18'
395	INLET F.C.	"	18'	395	INLET F.C.	"	24'
396	"	"	21'	396	CURB STOP	"	51'
396	"	"	46'	396	S.D. MH	"	50'
397	S.H.C. STAKE	"	54'	397	S.H.C. STAKE	"	54'
397	SAN. MH	"	60'	397	S.H.C. STAKE	"	64'
398	CURB STOP	"	40'	398	SAN. MH	"	30'
398	INLET F.C.	"	19'	398	S.H.C. STAKE	"	19'
399	SAN. MH	"	38'	399	SAN. MH	"	35'
399	CURB STOP	"	24'	399	CURB STOP	"	47'
400	CURB STOP	"	10'	400	SAN. MH	"	8'
400	SAN. MH	"	40'	400	SAN. MH	"	30'
401	CURB STOP	"	23'	401	CURB STOP	"	29'
401	SAN. MH	"	44'	401	SAN. MH	"	45'
402	CURB STOP	"	21'	402	CURB STOP	"	8'
402	SAN. MH	"	53'	402	SAN. MH	"	47'
403	CURB STOP	"	27'	403	CURB STOP	"	34'
403	SAN. MH	"	57'	403	SAN. MH	"	58'
404	CURB STOP	"	64'	404	CURB STOP	"	37'
404	SAN. MH	"	78'	404	SAN. MH	"	65'
405	INLET F.C.	"	64'	405	CURB STOP	"	74'
405	INLET F.C.	S.H.C. STAKE	41'	405	INLET F.C.	CURB STOP	25'
397	SAN. MH	BOX	34'				
398	INLET F.C.	BOX	38'				

Lyndwood Manor  
Section Two

Lyndwood Manor  
Sect. One Area One  
Open Space Lot 172

Centre 9500  
Parcel C  
PEC ZONE  
F-94-26

REVIEWED FOR HOWARD SOIL CONSERVATION DISTRICT AND MEETS TECHNICAL REQUIREMENTS  
*Petecia Engl* 6/24/95  
 Signature DATE  
 U.S. SOIL CONSERVATION SERVICE

THIS DEVELOPMENT PLAN IS APPROVED FOR SOIL EROSION AND SEDIMENT CONTROL BY THE HOWARD COUNTY SOIL CONSERVATION DISTRICT.  
*John R. Redman* 6/26/95  
 Signature DATE  
 HOWARD SOIL CONSERVATION DISTRICT

SEDIMENT CONTROL MEASURES FOR THIS CONTRACT WILL BE IMPLEMENTED IN ACCORDANCE WITH SECTION 210 OF THE STANDARD SPECIFICATION AND FINAL ROAD CONSTRUCTION PLANS: F-94-95, F-96-184

DEPARTMENT OF PUBLIC WORKS  
 HOWARD COUNTY, MD.  
*James P. Lee* 6/20/95  
 DIRECTOR OF PUBLIC WORKS DATE  
*Michael H. ...* 6-21-95  
 CHIEF BUREAU OF UTILITIES DATE

LAND DESIGN ENGINEERING, INC.  
 8835 Columbia 100 Parkway  
 Suite N  
 Columbia, Maryland 21045  
 Phone: (410) 715-1070 (301) 596-3424



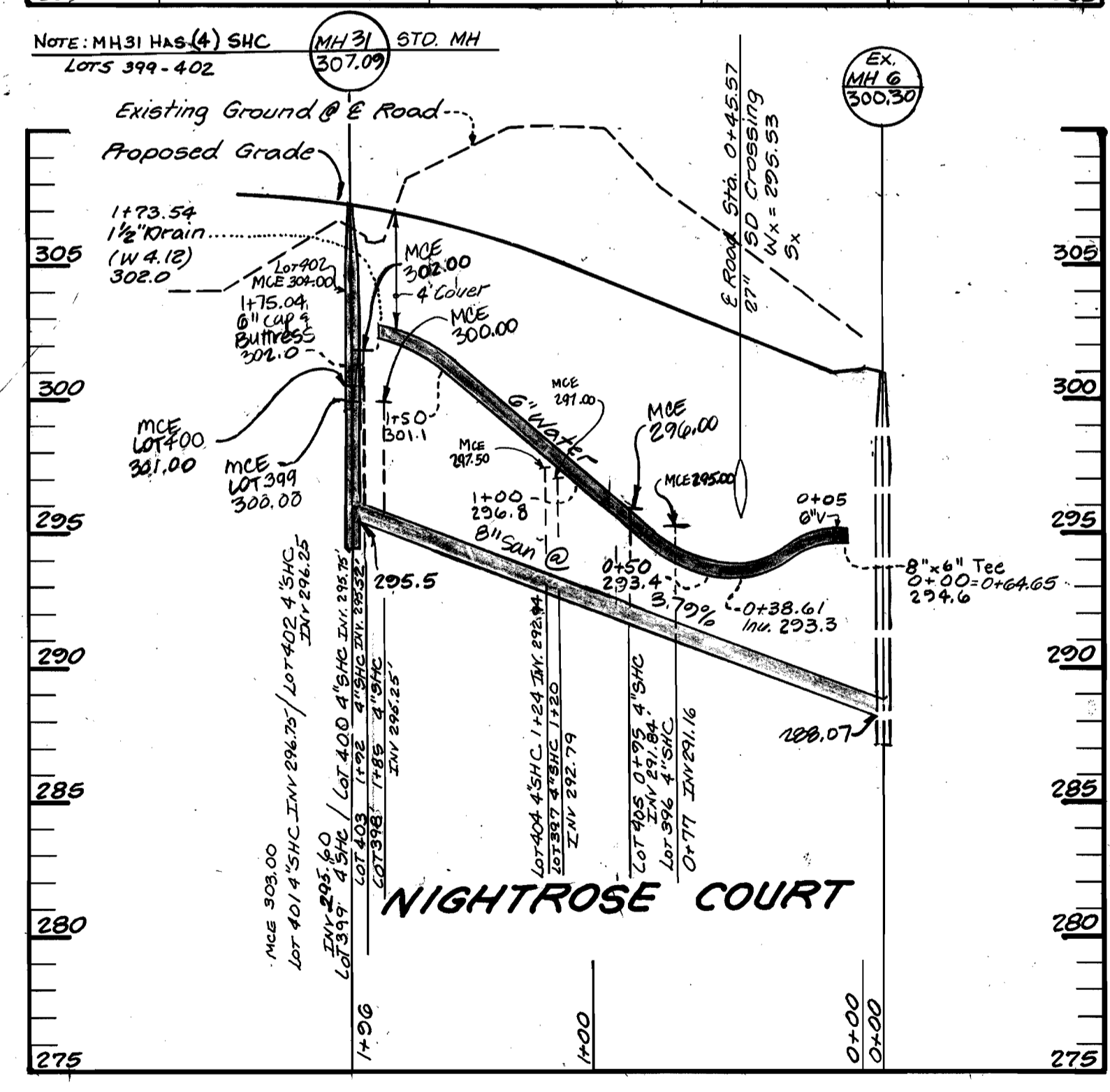
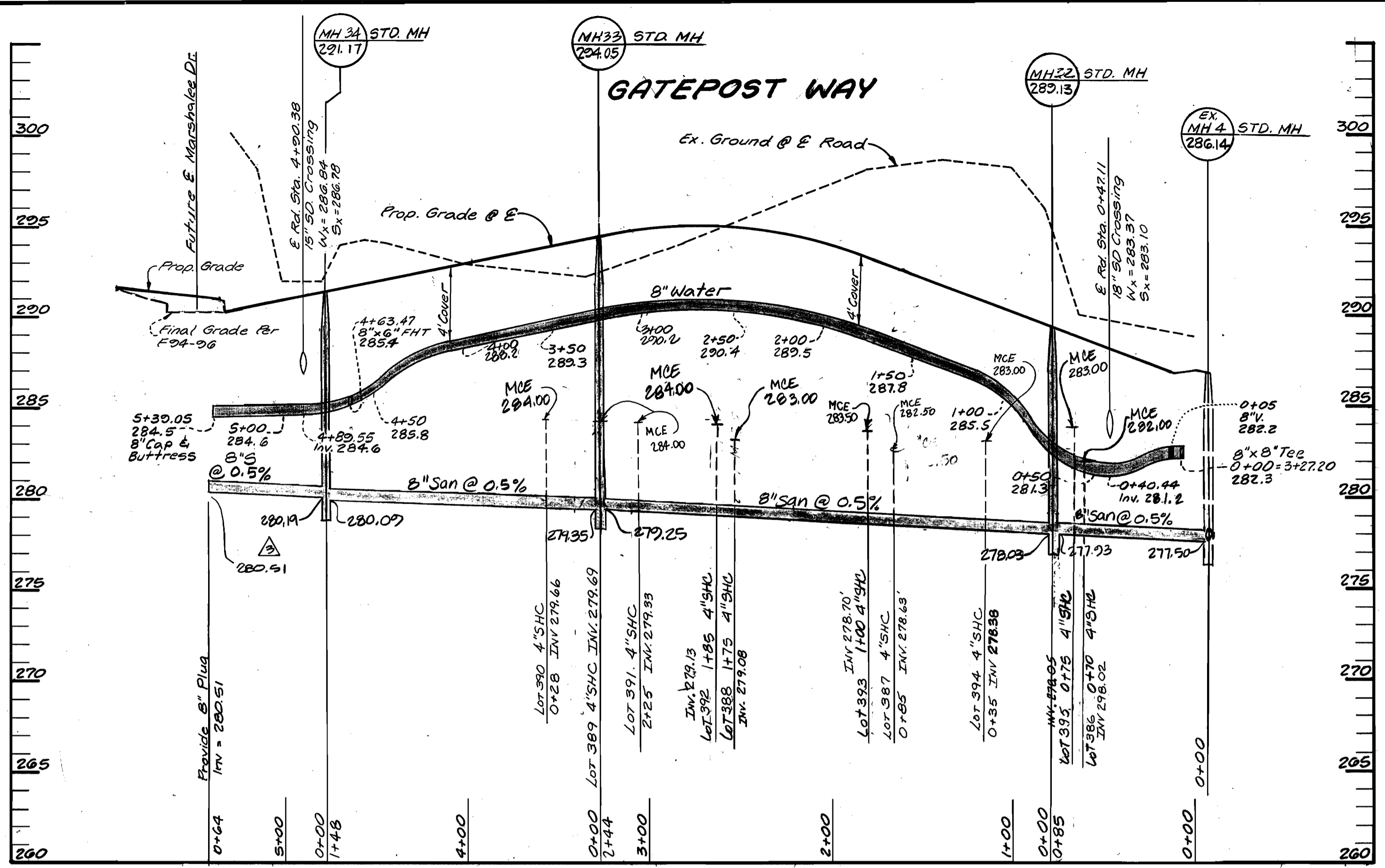
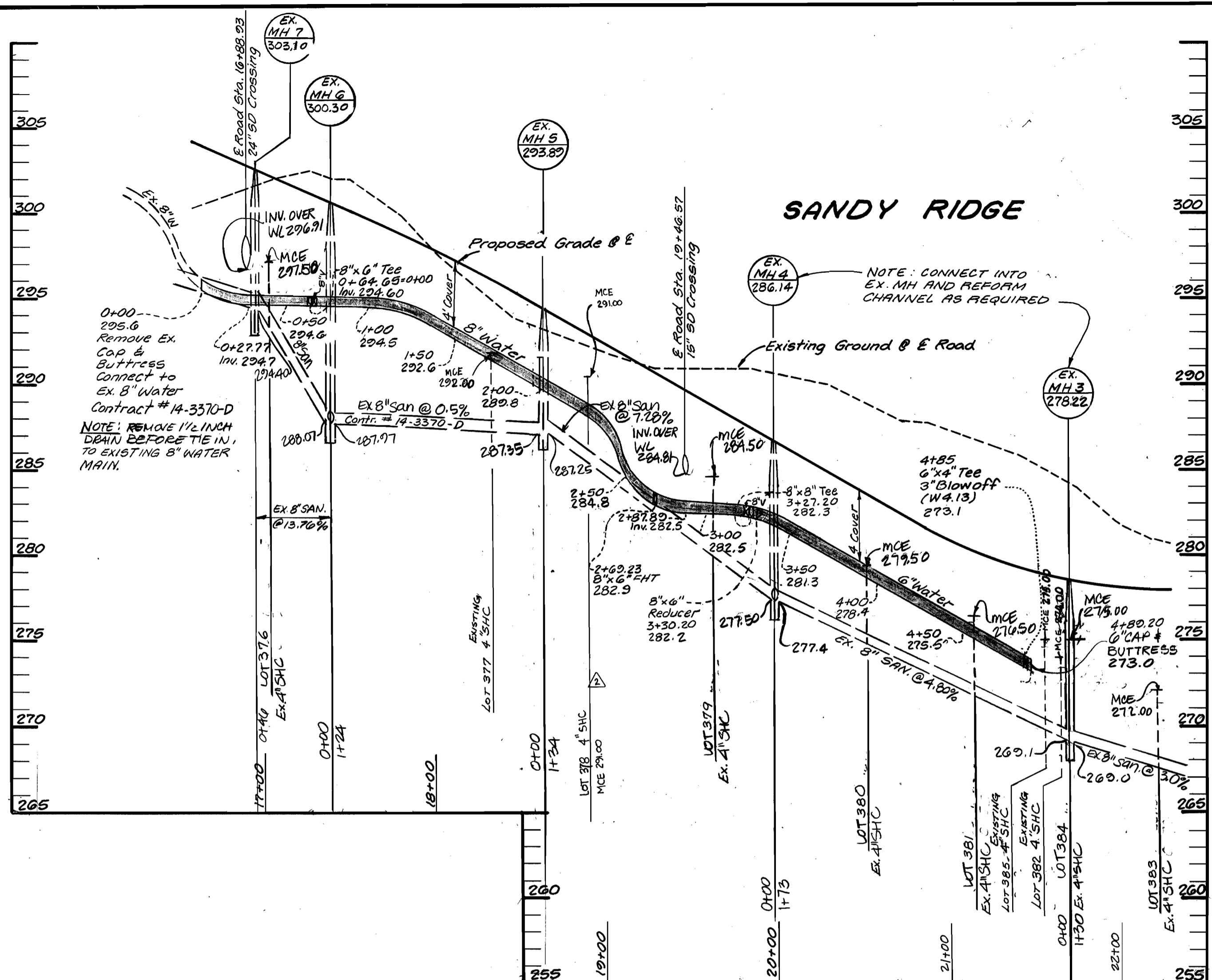
Designed	7/1/95			
Drawn	WJ/90	KEL	ASBUILT CONDITIONS ADDED TO PLAN	5/99
Checked	RM	LDE	Remove M4 & B' Sewer main	6-99
Date	4/75	LDE	REVISE STORM DRAIN INLET LOCATION, RELOCATE S.H.C. LOT 378, UPDATE MCE	8-98
		LDE	REVISED LOT #S, NUMBERS OF LOTS, REVISE HOUSE	4-25-97
		By	REVISION	Date

PLAN VIEW  
 600 SCALE MAP NO. 27 BLOCK NO. 10

LYNDWOOD MANOR  
 SECTION THREE AREA ONE  
 LOT 376 THRU LOT 405  
 1<sup>ST</sup> ELECTION DISTRICT HOWARD COUNTY, MARYLAND  
 CONTRACT NO. 14-3369-D

SCALE  
 1"=50'  
 SHEET  
 2 OF 3

3369 ws/3 LYNDWOOD MANOR, #1



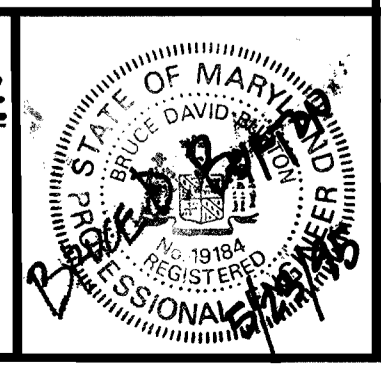
REVIEWED FOR HOWARD SOIL CONSERVATION DISTRICT AND MEETS TECHNICAL REQUIREMENTS  
*Catalina Engler* 6/26/95  
 Signature  
 U.S. SOIL CONSERVATION SERVICE

THIS DEVELOPMENT PLAN IS APPROVED FOR SOIL EROSION AND SEDIMENT CONTROL BY THE HOWARD COUNTY SOIL CONSERVATION DISTRICT.  
*John P. Robertson* 6/26/95  
 HOWARD COUNTY SOIL CONSERVATION DISTRICT

SEDIMENT CONTROL MEASURES FOR THIS CONTRACT WILL BE IMPLEMENTED IN ACCORDANCE WITH SECTION 219 OF THE STANDARD SPECIFICATION AND FINAL ROAD CONSTRUCTION PLANS: F 94-95 | F 96-184

DEPARTMENT OF PUBLIC WORKS  
 HOWARD COUNTY, MD.  
*James P. Lewis* 6/26/95  
 DIRECTOR OF PUBLIC WORKS  
*Michael A. Blum* 6/26/95  
 CHIEF - BUREAU OF UTILITIES

LAND DESIGN ENGINEERING, INC.  
 8835 Columbia 100 Parkway  
 Suite N  
 Columbia, Maryland 21045  
 Phone: (410) 715-1070 (301) 596-3424



Designed	TD/ES	Drawn	AL/WJ	Checked	RM	Date	By	No.	REVISION	Date
LDE	△	LDE	△	LDE	1	4/95				

WATER AND SEWER PROFILES  
 600 SCALE MAP NO. 31 BLOCK NO. 10

LYNDWOOD MANOR  
 SECTION THREE AREA ONE  
 △ LOT 376 THRU LOT 405  
 1ST ELECTION DISTRICT HOWARD COUNTY, MARYLAND  
 CONTRACT NO. 14-3369-D  
 SCALE  
 1" = 50' HORIZ  
 1" = 5' VERT.  
 SHEET  
 3 OF 3

3369 ws/1 LYNDWOOD MANOR, 31

**BENCH MARKS:**

Ho. Co. Mon. # 2644005 EL. 416.981

Ho. Co. Mon. # 2644004 EL. 402.135

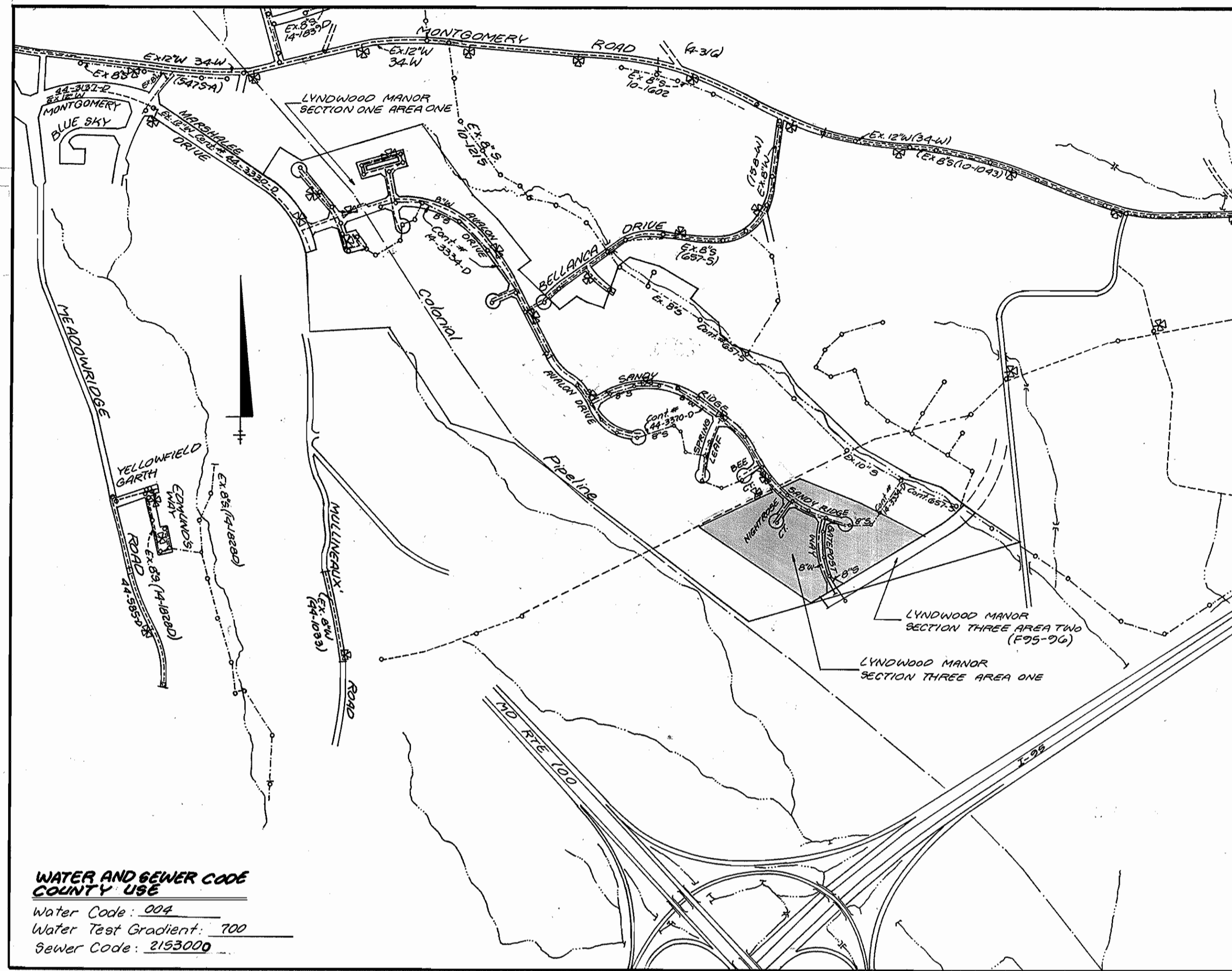
**DESCRIPTION**

Ho. Co. Mon. # 2644005 EL. 416.981  
Concrete Monument .2' Below Surface  
South Side Montgomery Road East  
of Meadow Ridge Road.

Ho. Co. Mon. # 2644004 EL. 402.135  
Concrete Monument .1' Below Surface  
SW Corner Of Intersection Rte. 103 and  
Old Montgomery Road.

LOT No.	Inv. Main	Inv. Prop. Line	MCE
386	278.02	278.42	282.00
387	278.63	278.77	282.50
388	279.08	279.28	283.00
389	279.69	280.07	284.00
390	279.66	280.34	284.00
391	279.33	280.03	284.00
392	279.13	279.99	284.00
393	278.70	279.58	283.50
394	278.38	279.08	283.00
395	278.05	278.65	283.00
396	291.16	291.52	295.00
397	292.79	293.15	297.00
398	295.25	296.07	300.00
399	295.60	296.28	300.00
400	295.75	296.55	301.00
401	296.75	297.61	303.00
402	296.25	297.29	304.00
403	295.52	296.62	302.00
404	292.94	293.54	297.50
405	291.84	292.44	296.00
378	285.55	289.85	291.00

NOTE: Lots 376 - 377 ; 379 - 385, SHC WERE constructed under F94-94



Type of Buildings	SFD
Number of Lots/Parcels	20 SFD ; 2 Open Space
Number of WH.C.'s	20
Number of S.H.C.'s	20
Drainage Area	PATAPSCO
Treatment Plant	PATAPSCO WWTP

**VICINITY MAP**  
Scale: 1" = 600'

INDEX OF SHEETS	
SHEET NO.	TITLE
1	TITLE SHEET
2	PLAN VIEW - SANDY RIDGE & NIGHTROSE CT.
3	PROFILES

**PART I**

- Approximate location of existing mains are shown. The Contractor shall take all necessary precautions to protect existing mains and services and maintain uninterrupted supply. Any damage incurred shall be repaired immediately to the satisfaction of the Engineer at the Contractor's expense.
- All horizontal controls are based on Maryland State Coordinates.
- All vertical controls are based on U.S.G.S. data.
- All pipe elevations shown are invert elevations.
- Clear all utilities by a minimum of 6'. Clear all poles by 2'-0" minimum or tunnel as required. The owner has contacted the utility companies and has made arrangements for bracing of poles as shown on the drawings. In the event the Contractor's work requires the bracing of additional poles, any cost incurred by the owner for bracing of additional poles or damages, shall be deducted from money owed the Contractor. The Contractor shall coordinate with the utility companies to schedule the bracing of the poles.
- For details not shown on the drawings and for materials and construction methods, use Howard County Design Manual, Volume 10, Standard Specifications and Details for Construction (Latest Edition). The Contractor shall have a copy of Volume 10 on the job.
- Where test pits have been made on existing utilities, they are noted by the symbol  $\odot$  of the location of the test pit. A note or notes containing the results of the test pit or pits is included on the drawings. Existing utilities in the vicinity of the proposed work for which test pits have not been dug, shall be located by the Contractor two weeks in advance of construction operations at his own expense.
- Contractor shall notify the following utility companies or agencies of least five working days before starting work shown on these plans:
  - a) State Highway Administration 531-5533
  - b) Baltimore Gas & Electric Co. 850-4820
  - c) Baltimore Gas & Electric Co. 787-9068
  - d) Miss Utility: 1-800-297-7777
  - e) Colonial Pipeline Company: 795-1390
  - f) Howard County Dept. of Public Works
  - g) Bureau of Utilities 313-4900
- Trees and shrubs are to be protected from damage to maximum extent. Trees and shrubs within the construction strip are not to be removed or damaged by the Contractor.
- Contractor shall remove trees, stumps and roots along line of excavation. Payment for such removal shall be included in the unit price bid for construction of the main.

**PART II: WATER**

- All water mains to be D.I.P. Class 52 unless otherwise noted.
- Tops of all water mains to have a minimum of 3 1/2' cover unless otherwise noted.
- Valves adjacent to the trees shall be strapped to the trees.
- All fittings shall be buttressed or anchored with concrete in accordance with the Standard Details unless otherwise provided for on the drawings.
- Fire hydrants shall be set to the bury line elevations shown on the drawings. All fire hydrants shall be strapped and buttressed with concrete in accordance with Section 1000 and 1005 of the Standard Specifications. The Contractor shall not operate any water main valves on the existing water system.
- All water house connections shall be for inside meter setting unless otherwise noted on plans or in specifications.

**PART III: SEWER**

- All sewer mains to be D.I.P. or PVC unless otherwise noted.
- All manholes shall be 4'-0" inside diameter unless otherwise noted.
- Force mains shall be D.I.P. only.
- Manholes designated W.T. in plan and profile shall have watertight frames and covers. Standard Detail 5952. Where watertight manhole frame and cover is used, set top of frame 1'-0" above finished grade unless otherwise noted on the drawings.
- Houses with the symbol "C.M.S." indicates that cellar cannot be served.
- Manholes shown with 12" and 18" walls are for brick manholes only.

**WATER & SEWER CONSTRUCTION PLANS**  
**LYNDWOOD MANOR**  
**SECTION THREE AREA ONE**  
1st ELECTION DISTRICT HOWARD COUNTY, MARYLAND  
CONTRACT No. 14-3369-D

QUANTITIES (CONT'D)				
NAME OF UTILITY CONTRACTOR:				
ITEM	QUANTITIES ESTIMATED	QUANTITIES	TYPE	MANUFACTURER / SUPPLIER
4" Water	39 LF			
4" x 3" Reducer	1 Ea.			
1 1/2" Water	40 LF			
1 1/2" Drain	1 Ea.			

QUANTITIES				
NAME OF UTILITY CONTRACTOR:				
ITEM	QUANTITIES ESTIMATED	QUANTITIES	TYPE	MANUFACTURER / SUPPLIER
6" Water	354 LF			
8" Water	870 LF			
6" Valves	3 EA			
8" Valves	3 EA			
1 1/2" Drain	1 EA			
8" x 6" Reducer	1 EA			
8" x 8" Tee	1 EA			
FIRE HYDRANTS 18" x 8" FIT	2 EA.			
3" Blow Off	1 EA			
8" Sewer	731 LF			
Manholes	4 EA			
4" SHC	655 LF			
3/4" WHC	850 LF			
8" x 6" Tee	1 EA			
8" x 4" Tee	1 EA			
1" V	1 EA			
1" WHC	80 LF			

REVIEWED FOR HOWARD SOIL CONSERVATION DISTRICT AND MEETS TECHNICAL REQUIREMENTS  
*Patricia Engler* 6/26/95  
Signature Date  
U.S. SOIL CONSERVATION SERVICE

THIS DEVELOPMENT PLAN IS APPROVED FOR SOIL EROSION AND SEDIMENT CONTROL BY THE HOWARD COUNTY SOIL CONSERVATION DISTRICT  
*John L. Robertson* 6/26/95  
Signature Date  
HOWARD SOIL CONSERVATION DISTRICT

SEDIMENT CONTROL MEASURES FOR THIS CONTRACT WILL BE IMPLEMENTED IN ACCORDANCE WITH SECTION 210 OF THE STANDARD SPECIFICATION AND FINAL ROAD CONSTRUCTION PLANS F-94-95, F-96-184

DEPARTMENT OF PUBLIC WORKS  
HOWARD COUNTY, MD.  
*James A. Lewis* 6/27/95  
DIRECTOR OF PUBLIC WORKS DATE  
*Michael A. Bismantola* 6/27/95  
CHIEF - BUREAU OF UTILITIES DATE

LAND DESIGN ENGINEERING INC.  
8835-N COLUMBIA 100 PARKWAY  
COLUMBIA, MARYLAND 21048  
(410) 719-1070 (301) 976-3424  
*Charles E. Brown* 6/27/95  
CHIEF - BUREAU OF ENGINEERING DATE  
*Bill Cummins* 6/27/95  
CHIEF - LAND DEVELOPMENT DIVISION DATE

Designed TO  
Drawn WJ/90  
Checked RM  
Date 1/94  
L.D.E.  $\Delta$  Revise Quantities Table/Remove 8" S. main & 14' 4.99  
L.D.E.  $\Delta$  Revise SHC TABLE, ADD LOT 378 TO THIS CONTRACT 8-98  
L.D.E. 1 Revise Lot Numbers, # of Lots, CHARTS, QUANTITIES 4-25-91  
By No. REVISION Date

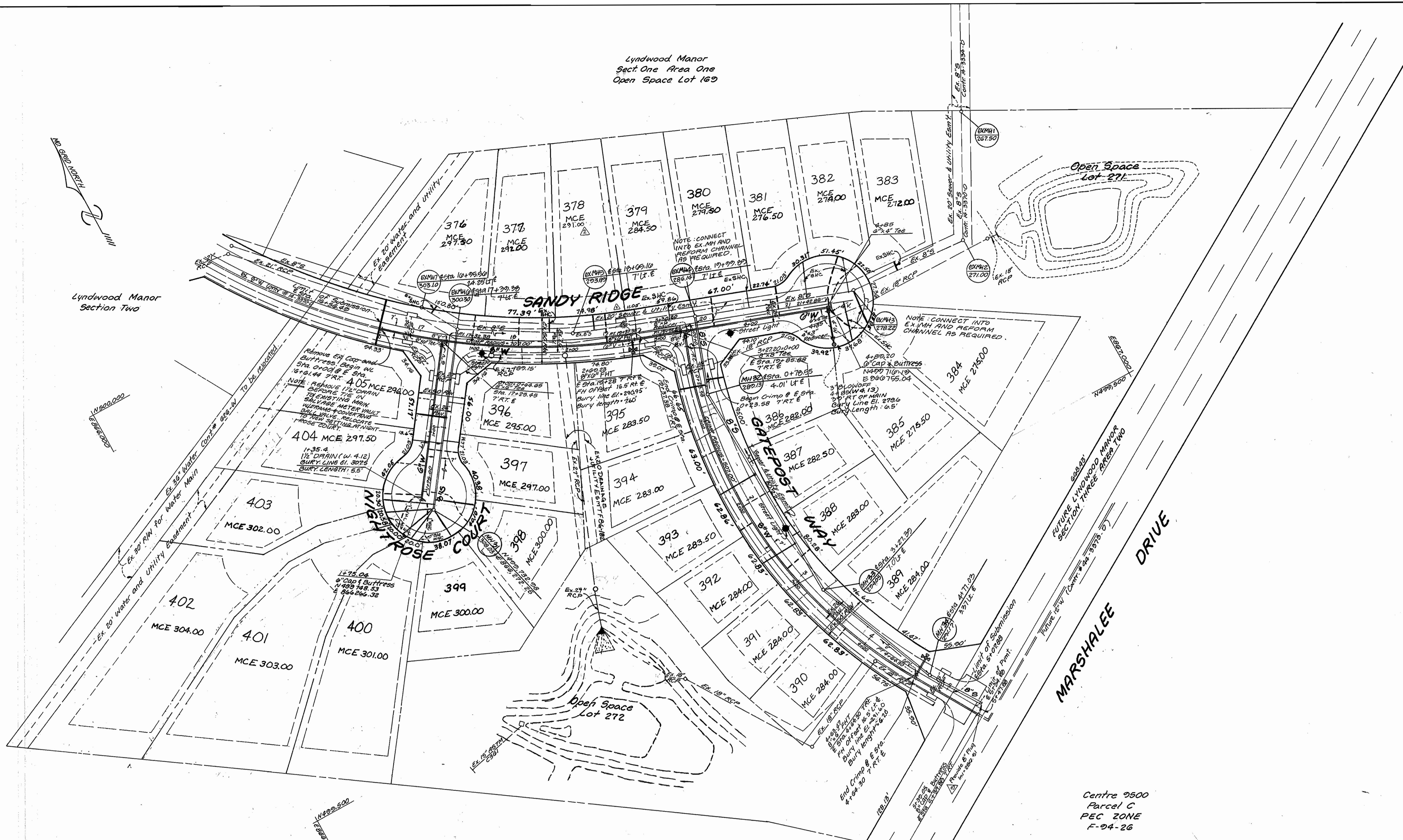
**TITLE SHEET**  
600 SCALE MAP No. 37 BLOCK 10

**LYNDWOOD MANOR**  
**SECTION THREE AREA ONE**  
 $\Delta$  LOT 376 THRU LOT 405  
1st ELECTION DISTRICT HOWARD COUNTY, MARYLAND  
CONTRACT No. 14-3369-D

SCALE AS SHOWN  
SHEET 1 OF 3

3369 WS/2 LYNDWOOD MANOR 3/1

Lyndwood Manor  
Sect One Area One  
Open Space Lot 169



Lyndwood Manor  
Section Two

Lyndwood Manor  
Sect One Area One  
Open Space Lot 172

Centre 9500  
Parcel C  
PEC ZONE  
F-94-26

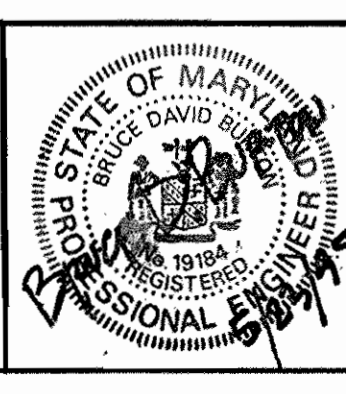
REVIEWED FOR HOWARD SOIL CONSERVATION DISTRICT AND MEETS TECHNICAL REQUIREMENTS  
*Patricia Eng* 6/26/95  
 Signature DATE  
 U.S. SOIL CONSERVATION SERVICE

THIS DEVELOPMENT PLAN IS APPROVED FOR SOIL EROSION AND SEDIMENT CONTROL BY THE HOWARD COUNTY SOIL CONSERVATION DISTRICT.  
*John R. Robertson* 6/26/95  
 Signature DATE  
 HOWARD COUNTY SOIL CONSERVATION DISTRICT

SEDIMENT CONTROL MEASURES FOR THIS CONTRACT WILL BE IMPLEMENTED IN ACCORDANCE WITH SECTION 210 OF THE STANDARD SPECIFICATION AND FINAL ROAD CONSTRUCTION PLANS: F-94-95, F-96-154

DEPARTMENT OF PUBLIC WORKS  
 HOWARD COUNTY, MD  
*James J. Shaw* 6/27/95  
 Director of Public Works DATE  
*Michael J. ...* 6/27/95  
 Chief - Bureau of Utilities DATE

LAND DESIGN ENGINEERING, INC.  
 8836 Columbia 100 Parkway  
 Suite N  
 Columbia, Maryland 21045  
 Phone: (410) 715-1070 (301) 596-3424



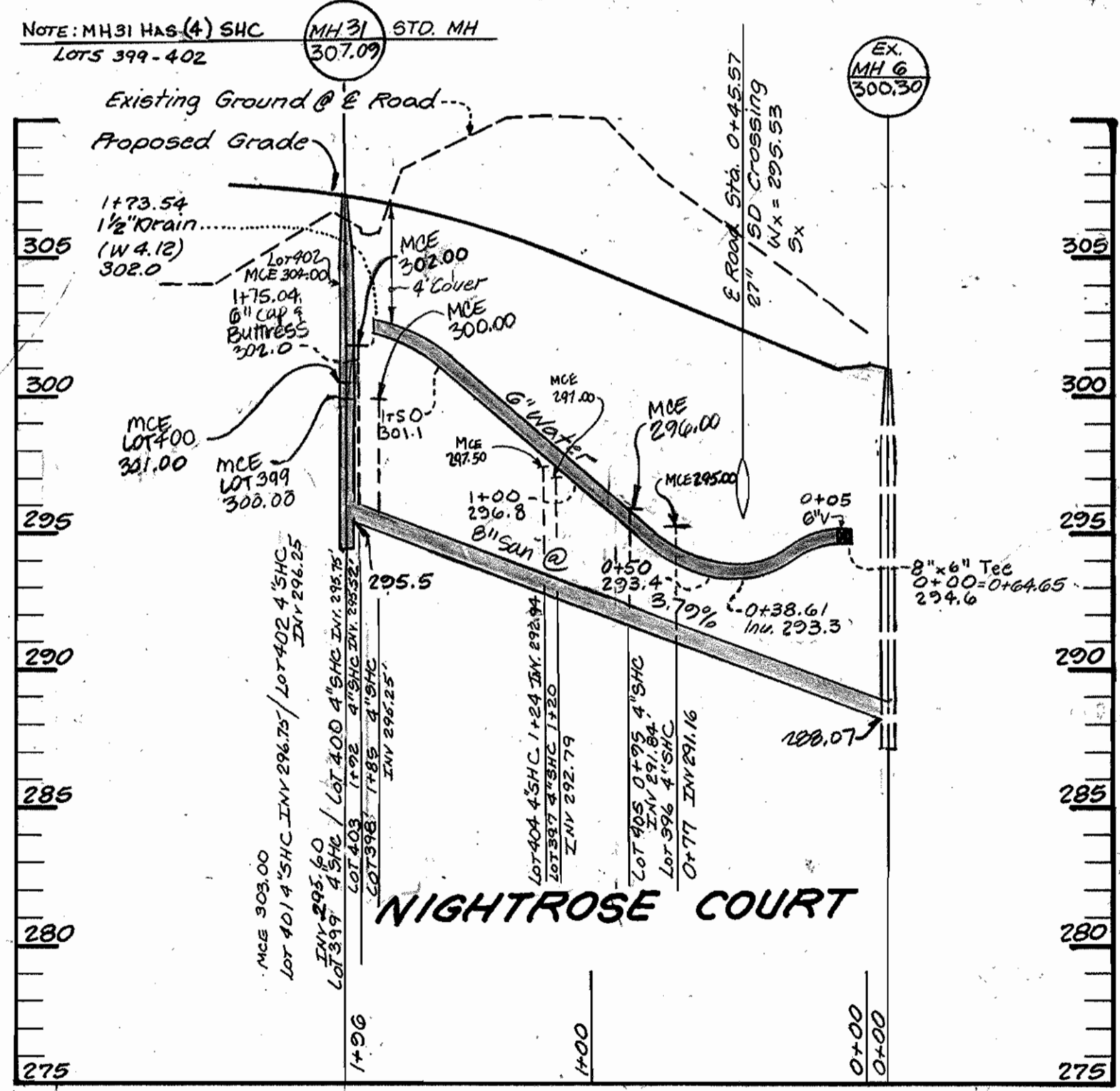
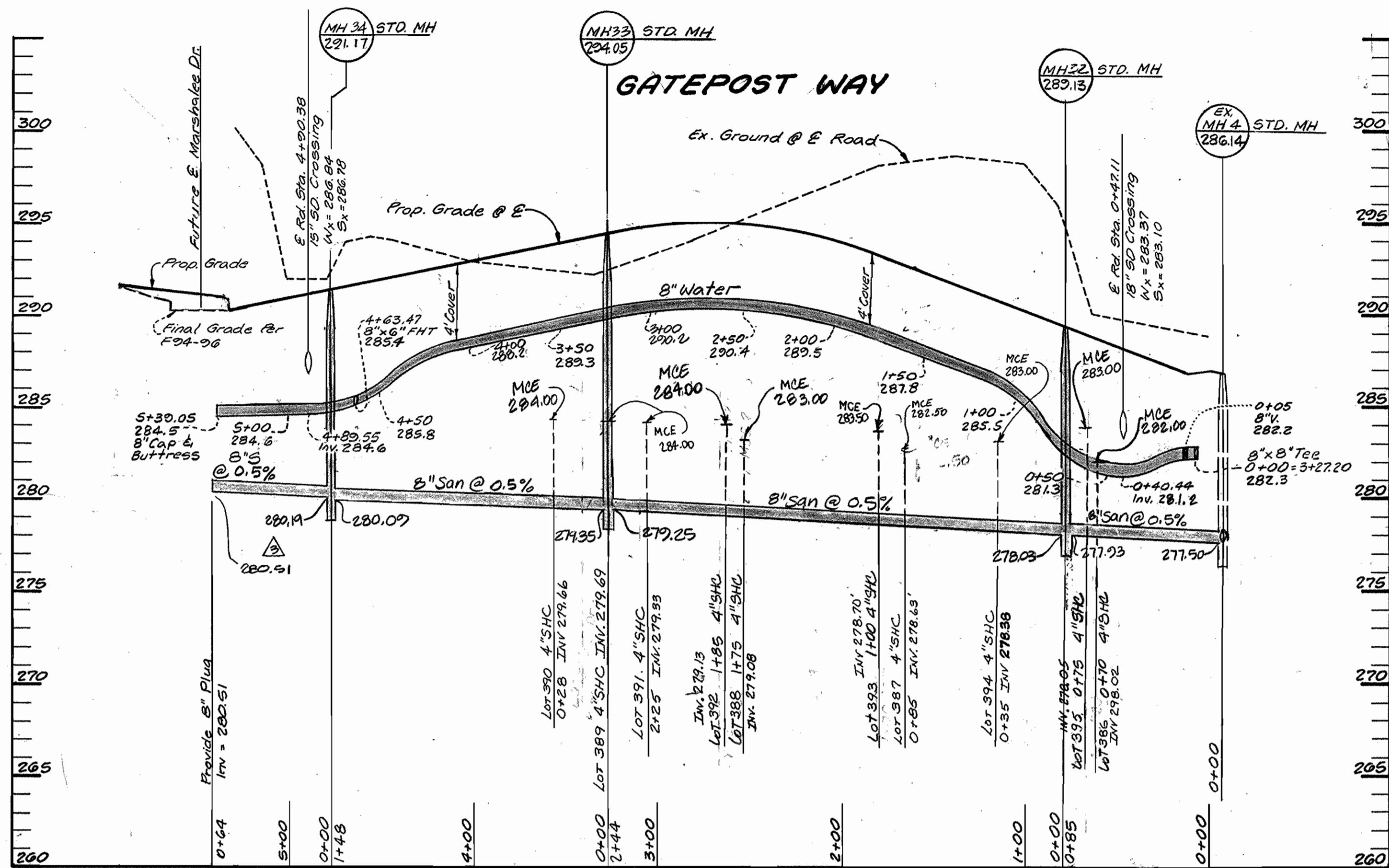
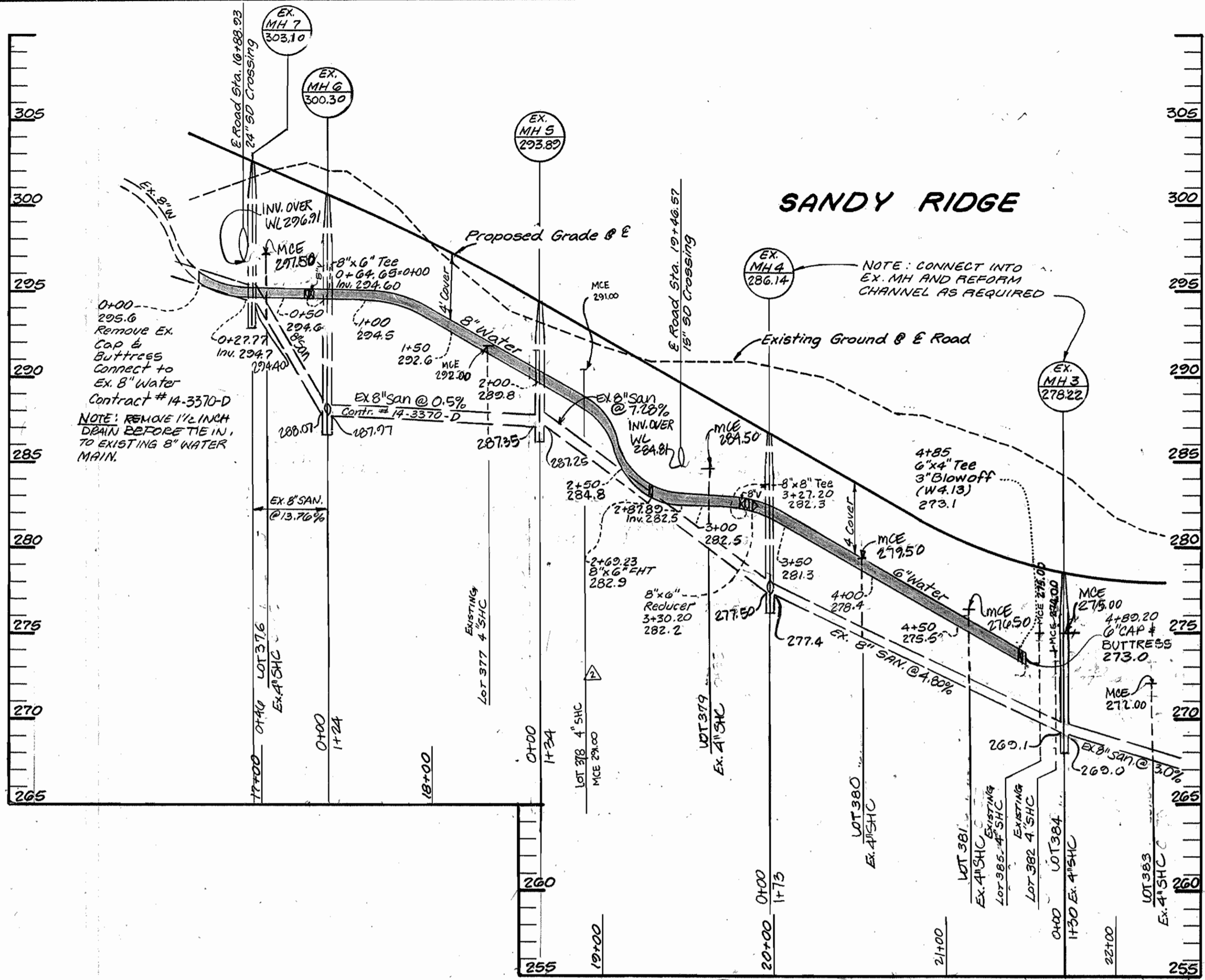
Designed	TO/ES			
Drawn	WJ/SO			
Checked	RM			
Date	4/95			
		L.D.E.	Remove 14" x 8" Sewer main	4-99
		LDE	Revised Storm Drain Inlet Location, Relocate SHC Lot 378, Update MCE	6-98
		LDE	REVISED LOT #S, NUMBERS OF LOTS, REVISE HOUSE	4-25-97
		By	No.	REVISION
				Date

PLAN VIEW  
 600 SCALE MAP No. 27 BLOCK No. 10

LYNDWOOD MANOR  
 SECTION THREE AREA ONE  
 LOT 376 THRU LOT 405  
 1<sup>ST</sup> ELECTION DISTRICT HOWARD COUNTY, MARYLAND  
 CONTRACT NO. 14-3300-D

SCALE  
 1" = 50'  
 SHEET  
 2 OF 3

3369 ws/3 LYNDWOOD MANOR, 3/1



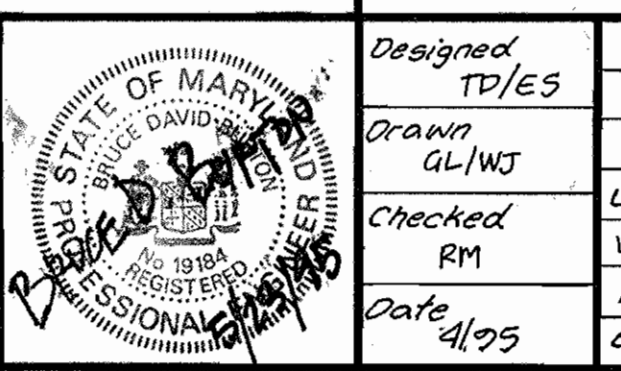
REVIEWED FOR HOWARD SOIL CONSERVATION DISTRICT AND MEETS TECHNICAL REQUIREMENTS  
*Patricia Engler* 6/26/95  
 Signature  
 U.S. SOIL CONSERVATION SERVICE

THIS DEVELOPMENT PLAN IS APPROVED FOR SOIL EROSION AND SEDIMENT CONTROL BY THE HOWARD COUNTY SOIL CONSERVATION DISTRICT.  
*John P. Redmond* 6/26/95  
 HOWARD COUNTY SOIL CONSERVATION DISTRICT

SEDIMENT CONTROL MEASURES FOR THIS CONTRACT WILL BE IMPLEMENTED IN ACCORDANCE WITH SECTION 219 OF THE STANDARD SPECIFICATION AND FINAL ROAD CONSTRUCTION PLANS: F 94-95 / F 96-184

DEPARTMENT OF PUBLIC WORKS  
 HOWARD COUNTY, MD.  
*James H. ...* 6/27/95  
 DIRECTOR OF PUBLIC WORKS DATE  
*Michael A. ...* 6/21/95  
 CHIEF BUREAU OF UTILITIES DATE

LAND DESIGN ENGINEERING, INC.  
 8835 Columbia 100 Parkway Suite N  
 Columbia, Maryland 21045  
 Phone: (410) 715-1070 (301) 596-3424



Designed	Drawn	Checked	Date
TD/ES	GL/WJ	RM	4/95

NO.	REVISION	DATE
1	REMOVE MH # 35 ± 52.2 F-2021 8\"/>	

WATER AND SEWER PROFILES  
 LYNDWOOD MANOR  
 SECTION THREE AREA ONE  
 LOT 376 THRU LOT 405  
 1<sup>ST</sup> ELECTION DISTRICT HOWARD COUNTY, MARYLAND  
 CONTRACT NO. 14-3369-D

SCALE  
 1" = 50' HORIZ.  
 1" = 5' VERT.  
 SHEET  
 3 OF 3