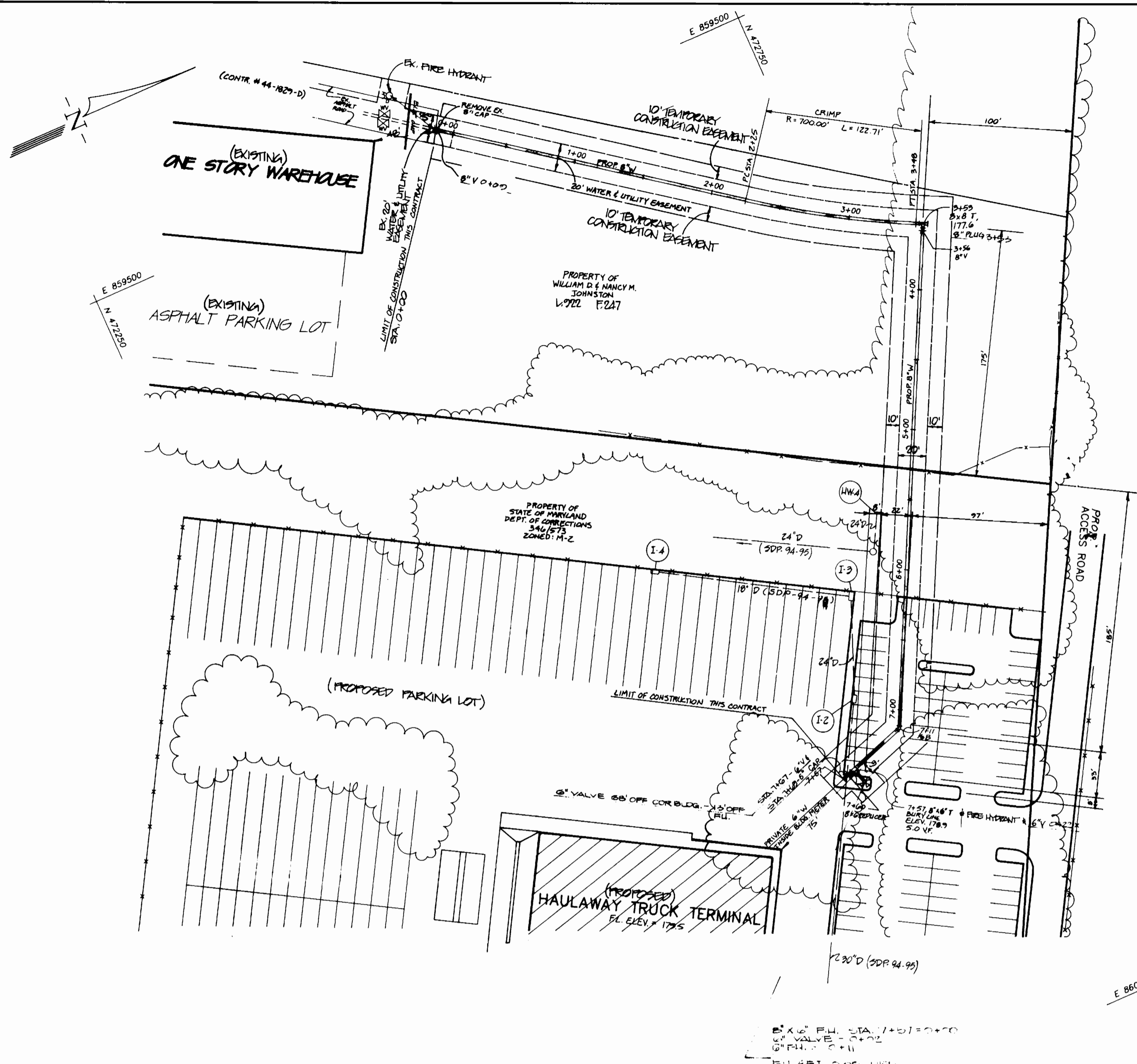


3367 ws/1 CSX Annapolis Junction Haulway Facility



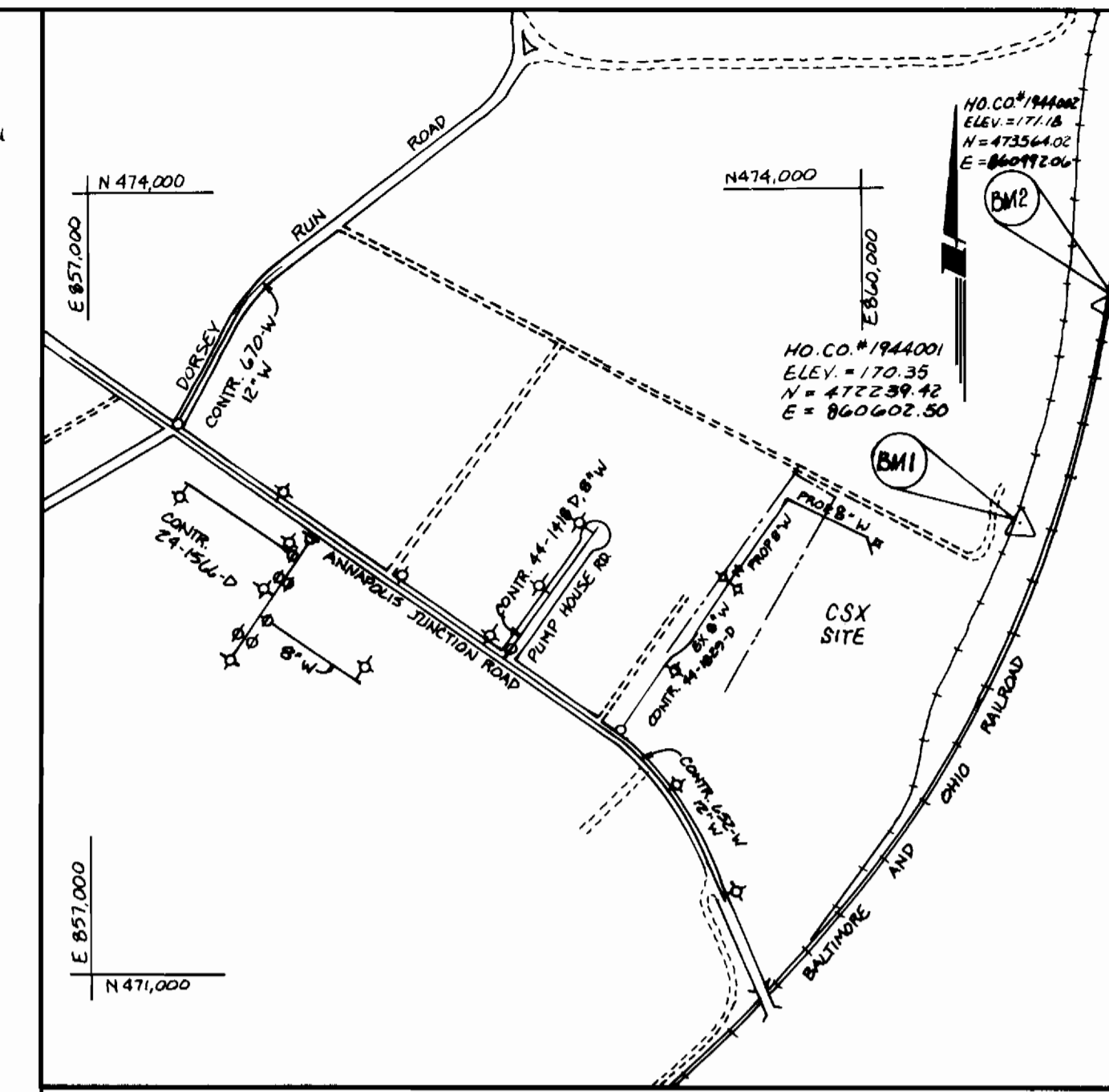
PLAN
SCALE: 1" = 50'

PROFILE
SCALE: 1" = 50' horiz.
1" = 5' vert.

ITEM	QUANTITIES ESTD	QUANTITIES	AS-BUILT	TYPE	SUPPLIER/MANUFACTURER
8" WATER	760 LF	760 LF	D.I.P.	D.I.P.	ATLANTIC STATES
6" WATER	7 LF	20 LF	D.I.P.	D.I.P.	"
8" TEE	1	1 EA.	D.I.P.	D.I.P.	TYLER PIPE
6" TEE	1	1 EA.	D.I.P.	D.I.P.	"
6" VALVE	2	2 EA.	CAST IRON	CAST IRON	MUELLER CO.
FIRE HYDRANT	1	1 EA.	CAST IRON	CAST IRON	"
6" CAP	1	1 EA.	D.I.P.	D.I.P.	TYLER PIPE
6" CAP FLUG	1	1 EA.	D.I.P.	D.I.P.	"
8" V	2	2 EA.	CAST IRON	CAST IRON	MUELLER CO.

NAME OF UTILITY CONTRACTOR: NORTH STAR POKT SERVICES

CHECKBOX:
AS-BUILT DATE:
SURVEY AND DRAFTING DIVISION



VICINITY MAP
SCALE: 1" = 600'

WATER CODE: 002
WATER NO: 002
TEXT GRADIENT: 58000

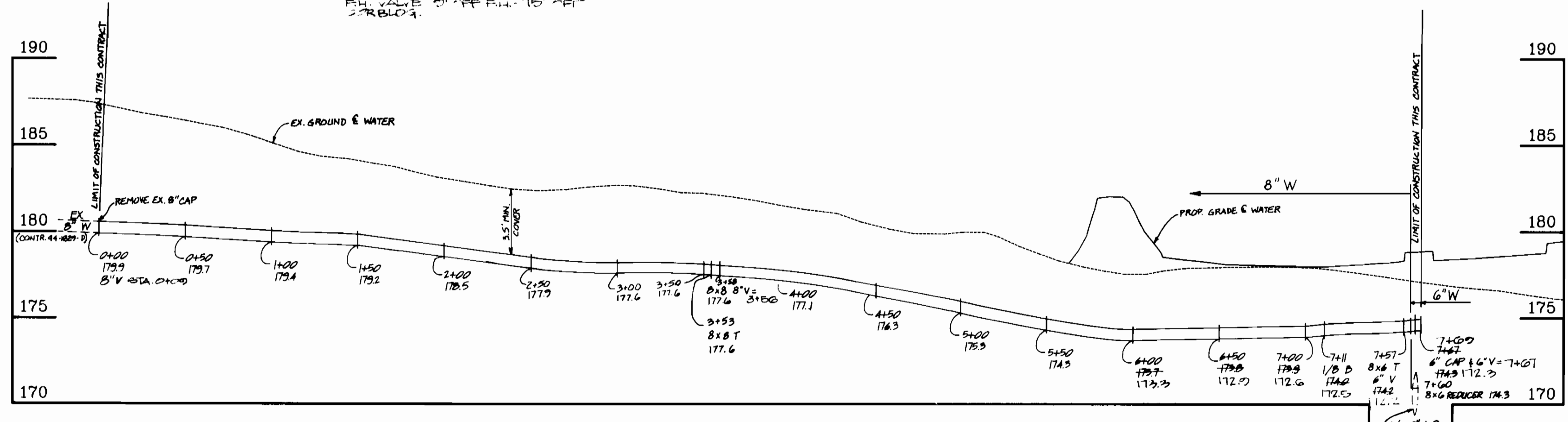
TYPE OF BUILDING: MAINTENANCE FACILITY
NO. OF LOTS: 1
NO. OF WAG: 1

GENERAL NOTES

- APPROXIMATE LOCATION OF EXISTING MAINS ARE SHOWN. THE CONTRACTOR SHALL TAKE ALL NECESSARY PRECAUTIONS TO PROTECT EXISTING MAINS AND SERVICES AND MAINTAIN UNINTERRUPTED SUPPLY. ANY DAMAGE INCURRED SHALL BE REPAIRED IMMEDIATELY TO THE SATISFACTION OF THE ENGINEER AT THE CONTRACTOR'S EXPENSE.
- ALL HORIZONTAL CONTROLS ARE BASED ON MARYLAND STATE COORDINATES.
- ALL VERTICAL CONTROLS ARE BASED ON U.S.G.S. DATUM.
- ALL PIPE ELEVATIONS SHOWN ARE INVERT ELEVATIONS.
- CLEAR ALL UTILITIES BY MINIMUM OF 6". CLEAR ALL POLES BY 2'-0" MINIMUM OR TUNNEL AS REQUIRED. THE OWNER HAS CONTACTED THE UTILITY COMPANIES AND HAS MADE ARRANGEMENTS FOR BRACING OF POLES AS SHOWN ON THE DRAWINGS. IN THE EVENT THE CONTRACTOR'S WORK REQUIRES THE BRACING OF ADDITIONAL POLES, ANY COST INCURRED BY THE OWNER FOR BRACING OF ADDITIONAL POLES OR DAMAGES SHALL BE DEDUCTED FROM MONEY OWNED BY THE CONTRACTOR. THE CONTRACTOR SHALL COORDINATE WITH THE UTILITY COMPANIES TO SCHEDULE THE BRACING OF THE POLES.
- FOR DETAILS NOT SHOWN ON THE DRAWINGS, AND FOR MATERIALS AND CONSTRUCTION METHODS, USE HOWARD COUNTY DESIGN MANUAL, VOLUME IV, STANDARD SPECIFICATIONS AND DETAILS FOR CONSTRUCTION (LATEST EDITION). THE CONTRACTOR SHALL HAVE A COPY OF VOLUME IV ON THE JOB.
- WHERE TEST PITS HAVE BEEN MADE ON EXISTING UTILITIES, THEY ARE NOTED BY THE SYMBOL \oplus AT THE LOCATION OF THE TEST PIT. A NOTE OR NOTES CONTAINING THE RESULTS OF THE TEST PIT OR PITS IS INCLUDED ON THE DRAWINGS. EXISTING UTILITIES IN THE VICINITY OF THE PROPOSED WORK FOR WHICH TEST PITS HAVE NOT BEEN DUG SHALL BE LOCATED BY THE CONTRACTOR TWO WEEKS IN ADVANCE OF CONSTRUCTION OPERATIONS AT HIS OWN EXPENSE.
- CONTRACTOR SHALL NOTIFY THE FOLLOWING UTILITIES OR AGENCIES AT LEAST FIVE WORKING DAYS BEFORE STARTING WORK SHOWN ON THESE PLANS:
STATE HIGHWAY ADMINISTRATION: 531-5533
BALTIMORE GAS & ELECTRIC CO.-CONTRACTOR SERVICES: 850-4620
BALTIMORE GAS & ELECTRIC CO. UNDERGROUND DAMAGE CONTROL: 787-9068
BALTIMORE GAS & ELECTRIC CO. TROUBLE SHOOTING: 298-9001
MISS UTILITY: 1-800-257-7777
COLONIAL PIPELINE COMPANY: 795-1390
BUREAU OF UTILITIES, HOWARD COUNTY DEPARTMENT OF PUBLIC WORKS: 313-4900
C & P TELEPHONE COMPANY: 1-800-257-7777
- TREES AND SHRUBS ARE TO BE PROTECTED FROM DAMAGE TO MAXIMUM EXTENT. TREES AND SHRUBS LOCATED WITHIN THE CONSTRUCTION STRIP ARE NOT TO BE REMOVED OR DAMAGED BY THE CONTRACTOR.
- CONTRACTOR SHALL REMOVE TREES, STUMPS AND ROOTS ALONG LINE OF EXCAVATION. PAYMENT FOR SUCH REMOVAL SHALL BE INCLUDED IN THE UNIT PRICE BID FOR CONSTRUCTION OF THE MAIN.
- THE CONTRACTOR SHALL NOTIFY THE BUREAU OF HIGHWAYS, HOWARD COUNTY, AT (410) 313-2450 AT LEAST FIVE WORKING DAYS BEFORE ANY OPEN CUT OF ANY COUNTY ROAD OR BORING/JACKING OPERATION IN COUNTY ROADS FOR LAYING WATER/SEWER MAINS OR HOUSE CONNECTIONS. THE APPROVAL OF THESE DRAWINGS WILL CONSTITUTE COMPLIANCE WITH DPW REQUIREMENTS PER SECTION 18.114(G) OF THE HOWARD COUNTY CODE.

WATER NOTES

- ALL WATER MAINS TO BE D.I.P. CLASS 52 UNLESS OTHERWISE NOTED.
- TOPS OF ALL WATER MAINS TO HAVE A MINIMUM OF 3'-1/2' COVER UNLESS OTHERWISE NOTED.
- VALVES ADJACENT TO TEES SHALL BE STRAPPED TO TEES.
- ALL FITTINGS SHALL BE BUTTRESSED OR ANCHORED WITH CONCRETE IN ACCORDANCE WITH THE STANDARD DETAILS UNLESS OTHERWISE PROVIDED FOR ON THE DRAWINGS.
- FIRE HYDRANTS SHALL BE SET TO THE BURY LINE ELEVATIONS SHOWN ON THE DRAWINGS. ALL FIRE HYDRANTS SHALL BE STRAPPED AND BUTTRESSED WITH CONCRETE IN ACCORDANCE WITH STANDARD DETAILS. SOIL AROUND THE FIRE HYDRANT SHALL BE COMPACTED IN ACCORDANCE WITH SECTION 1000 AND 1005 OF THE STANDARD SPECIFICATIONS.
- THE CONTRACTOR SHALL NOT OPERATE ANY WATER MAIN VALVES ON THE EXISTING WATER SYSTEM.
- ALL WATER HOUSE CONNECTIONS SHALL BE FOR INSIDE METER SETTINGS, UNLESS OTHERWISE NOTED ON THE PLANS OR IN THE SPECIFICATIONS.



SEDIMENT CONTROL MEASURES FOR THIS CONTRACT WILL BE IMPLEMENTED IN ACCORDANCE WITH SECTION 219 OF THE HOWARD COUNTY DESIGN MANUAL AND STANDARDS AND SPECIFICATIONS FOR SOIL EROSION AND SEDIMENT CONTROL IN DEVELOPING AREAS AND ALSO AS SHOWN ON THE GRADING AND SEDIMENT CONTROL PLAN

REVIEWED FOR HOWARD COUNTY SOIL CONSERVATION DISTRICT AND MEETS TECHNICAL REQUIREMENTS.

Patricia Engler 7/7/94
U.S. SOIL CONSERVATION SERVICE DATE

THIS DEVELOPMENT PLAN IS APPROVED FOR EROSION AND SEDIMENT CONTROL BY HOWARD SOIL CONSERVATION DISTRICT.

APPROVED:

John P. Roberts 7/7/94
HOWARD SOIL CONSERVATION DISTRICT DATE

PLAN REFERENCE NUMBERS
EXP. 04-05

DEVELOPER
TOTAL DISTRIBUTION SERVICES, INC.
550 WATER STREET
JACKSONVILLE, FLORIDA 32202

OWNER
STATE OF MARYLAND
DEPARTMENT OF CORRECTIONS
JESSUP, MD 21401

DEPARTMENT OF PUBLIC WORKS
HOWARD COUNTY, MARYLAND

James A. ... 7/8/94
DIRECTOR OF PUBLIC WORKS DATE

Robert ... 7-5-94
CHIEF, BUREAU OF UTILITIES DATE

... 7/1/94
CHIEF, LAND DEVELOPMENT DIVISION DATE

MILDENBERG, MOCHI & ASSOCIATES, INC.
ENGINEERS • SURVEYORS • PLANNERS

3300 North Ridge Road, Suite 235, Ellicott City, Maryland 21043-3350
(410) 461-0078 D.C. Metro No. (301) 621-5768



DES: FOL					
DRN: AMV					
CHK: RMM					
PROJ: # 94009.00					
DATE: 4/21/94	BY: NO.	REVISED WATER LINE	REVISION	DATE	

PLAN AND PROFILE OF WATER MAIN

600' SCALE MAP NO. 25 BLOCK NO. 15

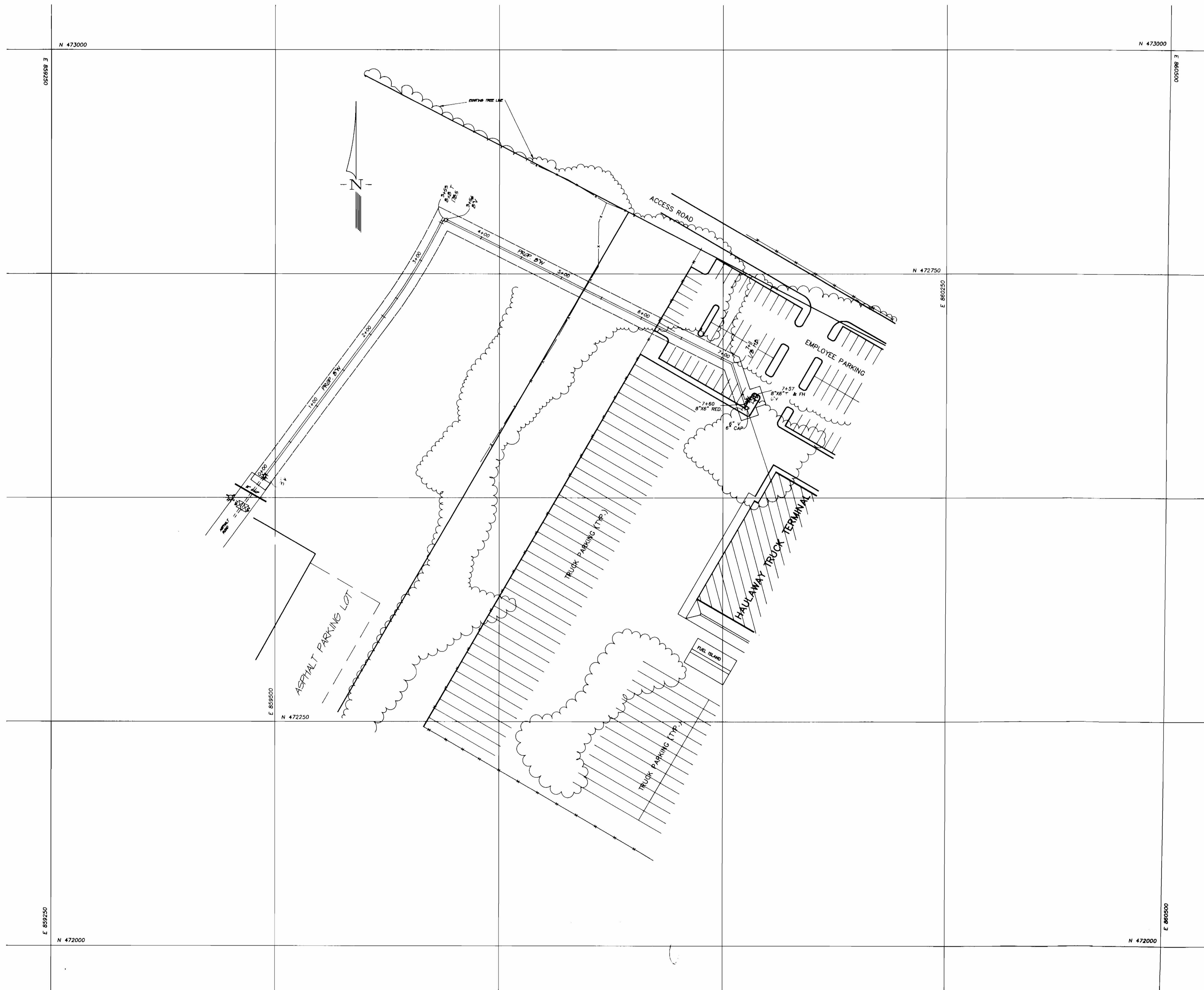
WATER AS-BUILT

CSX ANNAPOLIS JUNCTION HAULWAY FACILITY

CONTRACT NO. 44-3367-D
ELECTION DISTRICT NO. 6
HOWARD COUNTY, MARYLAND

SCALE AS SHOWN
SHEET 1 OF 1

3367 position sht. (1 of 1) CSX ANNAPOLIS Hauling Facility



HOWARD COUNTY
DEPARTMENT OF PUBLIC WORKS
16-472-860
SCALE: 1"=50'
MAP No. _____