

WATER AND SEWER EXTENSIONS HAMMOND'S OVERLOOK

A RESUBDIVISION OF PARCEL 'A' BOLLING BROOKE
6th ELECTION DISTRICT
HOWARD COUNTY, MARYLAND
CONTRACT NO. 24-3359-D

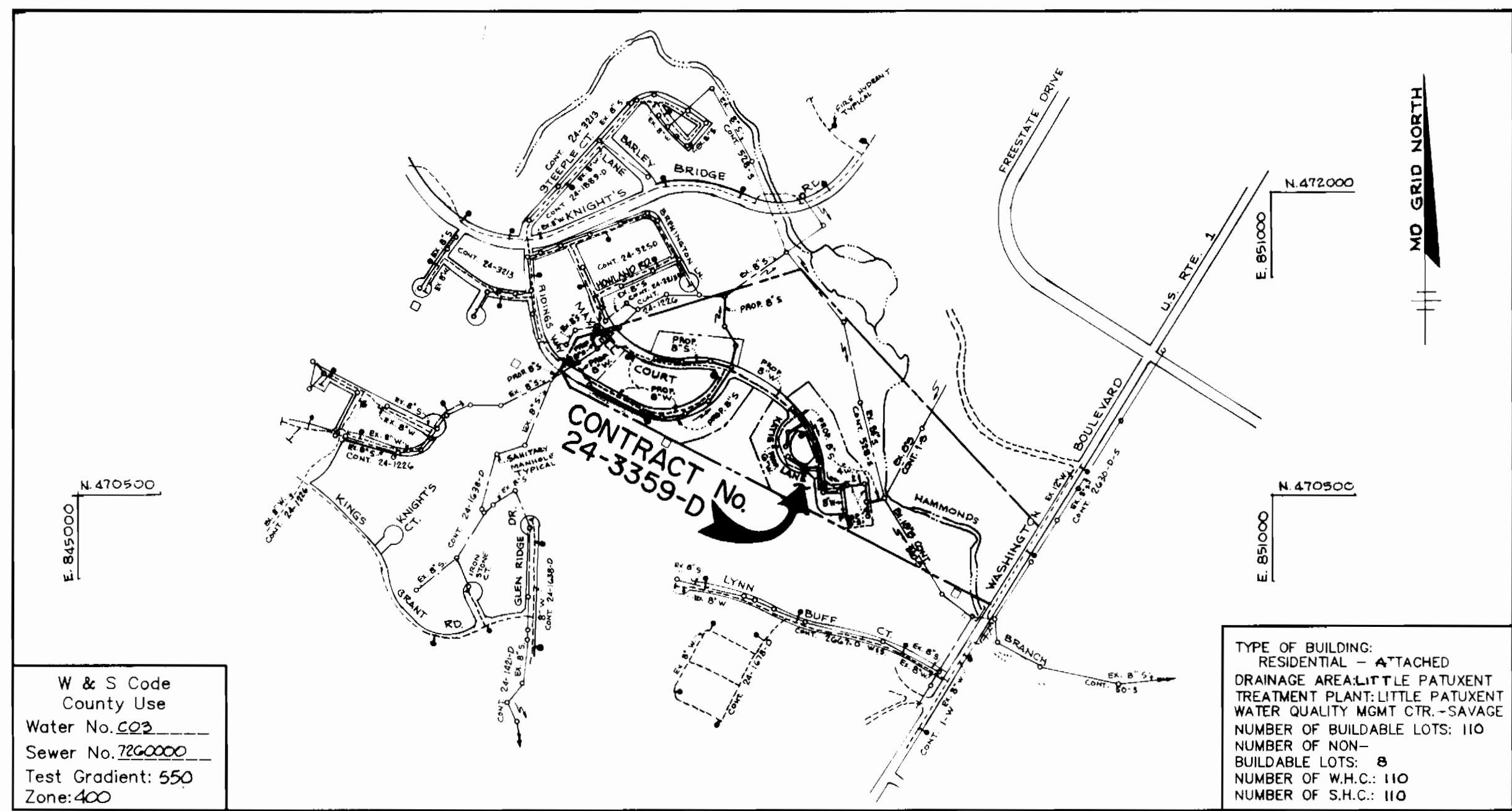
AS-BUILT 2-26-96
WS/1 HAMMOND'S OVERLOOK
3359

SHEET INDEX	
NO.	DESCRIPTION
1	TITLE SHEET
2	PLAN OF WATER AND SEWER MAINS
3	PLAN OF WATER AND SEWER MAINS
4	PROFILES OF WATER AND SEWER MAINS
5	PROFILES OF WATER AND SEWER MAINS
6	PROFILES OF WATER AND SEWER MAINS

QUANTITIES				
ITEMS	QUANTITIES ESTIMATED	AS-BUILT		
		QUANTITIES	TYPE	MANUFACTURER / SUPPLIER
8" WATER	2848 LF	2833 LF	DIP	GRIFFIN PIPE
6" WATER	513 LF	512 LF	DIP	GRIFFIN PIPE
1 1/2" WHC	1293 LF	1349 LF	"K" COPPER	CAMBRIDGE-LEE
1" WHC	1261 LF	1078 LF	"K" COPPER	CAMBRIDGE-LEE
8" SEWER	2847 LF	2613 LF	PVC	J-M HFG.
8" D.I.P. CL. 52	416 LF	523 LF	DIP	GRIFFIN PIPE
4" SHC	3571 LF	3809 LF	PVC	J-M HFG.
FIRE HYDRANTS	5 EA.	5 EA.	CAST IRON	AMER. FLOW CONTR.
8" VALVES	4 EA.	8 EA.	GATE	MUELLER CO.
6" VALVES	7 EA.	7 EA.	GATE	MUELLER CO.
SEWER MANHOLES	31 EA.	31 EA.	PRECAST	ATLANTIC
AIR RELEASE MANHOLES	4 EA.	4 EA.	PRECAST	ATLANTIC
4" WATER	82 LF	103 LF	DIP	GRIFFIN PIPE
SEWER MANHOLE OVER 6" DEEP	102 VF	—	—	—
3" BLOWOFF	2 EA.	2 EA.	CAST IRON	KUPFENE ENDRY.
4" VALVES	—	3 EA.	GATE	MUELLER CO.

NAME OF UTILITY CONTRACTOR: C.C.S. INC.

CHECKBOX	
AS-BUILT DATE	
SURVEY AND DRAFTING DIVISION	



GENERAL NOTES

- Approximate location of existing mains are shown. The contractor shall take all necessary precautions to protect existing mains and services and maintain uninterrupted supply. Any damage incurred shall be repaired immediately to the satisfaction of the Engineer at the Contractor's expense.
- All horizontal controls are based on Maryland State Coordinates.
- All vertical controls are based on U.S.G.S. data.
- All pipe elevations shown are invert elevations.
- Clear all utilities by a minimum of 6". Clear all poles by 2'-0" minimum or tunnel as required. The owner has contacted the utility companies and has made arrangements for bracing of poles as shown on the drawings. In the event the contractor's work requires the bracing of additional poles, any cost incurred by the owner for bracing of additional poles or damages shall be deducted from money owed the contractor. The contractor shall coordinate with the utility companies to schedule the bracing of the poles.
- For details not shown on the drawings, and for materials and construction methods use Howard County Design Manual, Volume IV, Standard Specifications and Detail for Construction. (Latest Edition). The contractor shall have a copy of Volume IV on the job.
- Where test pits have been made on existing utilities, they are noted by the symbol at the location of the test pit. A note or notes containing the results of the test pit or pits is included on the drawings. Existing utilities in the vicinity of the proposed work for which test pits have not been dug shall be located by the contractor two weeks in advance of construction operations at his own expense.
- Contractor shall notify the following utility companies or agencies at least five working days before starting work shown on these plans:

State Highway Administration	531-5533
Baltimore Gas & Electric Co. Contractor Services	850-4620
Baltimore Gas & Electric Co. Underground Damage Control	787-9068
Miss Utility	1-800-257-7777
Colonial Pipeline Co.	795-1390
Bureau of Utilities, Howard County Department of Public Works	313-4900
- Trees and shrubs are to be protected from damage to maximum extent. Trees and shrubs located within the construction strip are not to be removed or damaged by the contractor.
- Contractor shall remove trees, stumps and roots along line of excavation. Payment for such removal shall be included in the unit price bid for construction of the main.
- All water mains to be D.I.P. Class 52 unless otherwise noted.
- Tops of all water mains to have a minimum of 3-1/2' cover unless otherwise noted.
- Valves adjacent to tees shall be strapped to tees.
- All fittings shall be buttressed or anchored with concrete in accordance with the Standard Details unless otherwise provided for on the drawings.
- Fire hydrants shall be set to the bury line elevations shown on the drawings. All fire hydrants shall be restrained and buttressed with concrete in accordance with Standard Details. Soil around the fire hydrant shall be compacted in accordance with Section 1000 and 1005 of the Standard Specifications.
- The contractor shall not operate any water main valves on the existing water system.
- All water house connections shall be for inside meter setting unless otherwise noted on plans or in specifications.
- All sewer mains shall be DIP, RCP, VCPX, CSPX, RCPD and P.V.C. unless otherwise noted.
- All manholes shall be 4'-0" inside diameter unless otherwise noted.
- Force mains shall be D.I.P. only.
- Manholes shown with 12" and 16" walls are for brick manholes only.
- Manholes designated W.T. in plan and profile shall have watertight frame and covers, Standard Detail GS-52. Where watertight manhole frame and cover is used, set top of frame 1"-6" above finished grade unless otherwise noted on the drawings.
- House(s) with the symbol "C.N.S." indicates that cellar cannot be served.
- Manholes can be either brick or precast concrete structures.

Sediment control measures for this contract will be implemented in accordance with Section 219 of the Specifications and as shown on F-95-24

BENCHMARKS

BM#1
N 505,000 005
CONCRETE MONUMENT 20' EAST OF NORTHBOUND LANE ROUTE 1,
12'1" SOUTH OF ROUTE 92 OVERPASS AND 0.3' NORTHEAST OF
SERVICE ROAD OVERPASS
ELEV. 205.818
E 1,505,000 400
E 1,505,000 400

BM#2
N 524,000 074
CONCRETE MONUMENT 20' NORTH OF SOUTHBOUND ROUTE 1,
78.0' SOUTHEAST OF BRENNER ANIMAL HOSPITAL AND 302'
SOUTHWEST OF FH
E 1,267,025 608
E 1,267,025 608

Review for Howard Soil Conservation District and meets technical requirements.

[Signature] 11/30/94
U.S. SOIL CONSERVATION SERVICE DATE

This plan is approved for soil erosion and sediment control by the Howard Soil Conservation District.

[Signature] 11/28/94
HOWARD SOIL CONSERVATION DISTRICT DATE

DEPARTMENT OF PUBLIC WORKS
HOWARD COUNTY, MARYLAND

[Signature] 12/8/94
DIRECTOR OF PUBLIC WORKS DATE

[Signature] 12/8/94
CHIEF, BUREAU OF ENGINEERING DATE

[Signature] 11-23-94
CHIEF, BUREAU OF UTILITIES DATE

[Signature] 12/8/94
CHIEF, LAND DEVELOPMENT DATE

RIEMER MUEGGE & ASSOCIATES, INC.
Planners • Engineers • Surveyors
8818 Centre Park Drive • Suite 200 • Columbia, Md 21045
410-997-8900 FAX: 410-997-9282

STATE OF MARYLAND
JAYKANT D. PAREKH #19148

DES: C.J.R.
DRN: D.A.M.
CHK: JDP
DATE: 11-22-94

AS-BUILTS (SHT 6A 05 6)
DATE: 11-22-94

TITLE SHEET

600' SCALE MAP NO. 47 BLOCK NO. 23

HAMMOND'S OVERLOOK
A RESUBDIVISION OF PARCEL 'A' BOLLING BROOKE
LOTS 1 THRU 118
6th ELECTION DISTRICT
HOWARD COUNTY, MARYLAND
CONTRACT NO. 24-3359-D

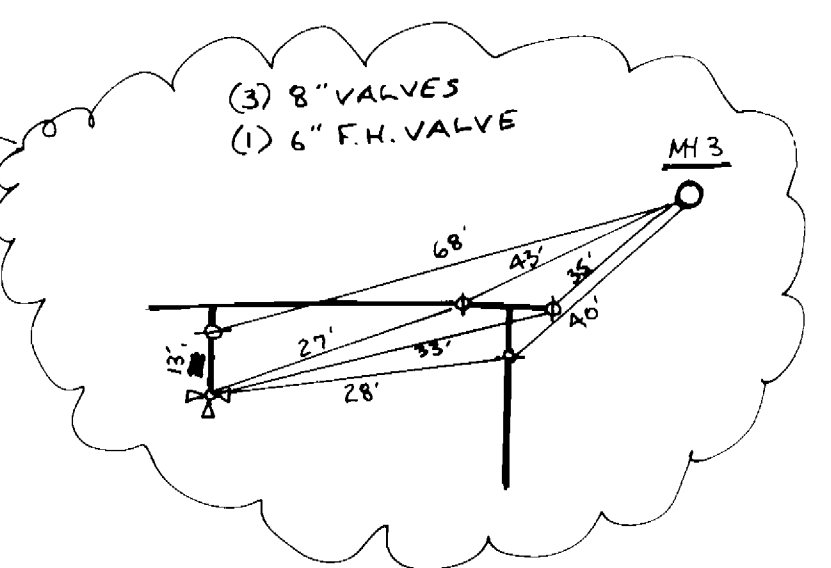
SCALE AS SHOWN
SHEET 1 OF 6

3359 WS/2 HAMMOND'S OVERLOOK

MANHOLE LOCATION SCHEDULE

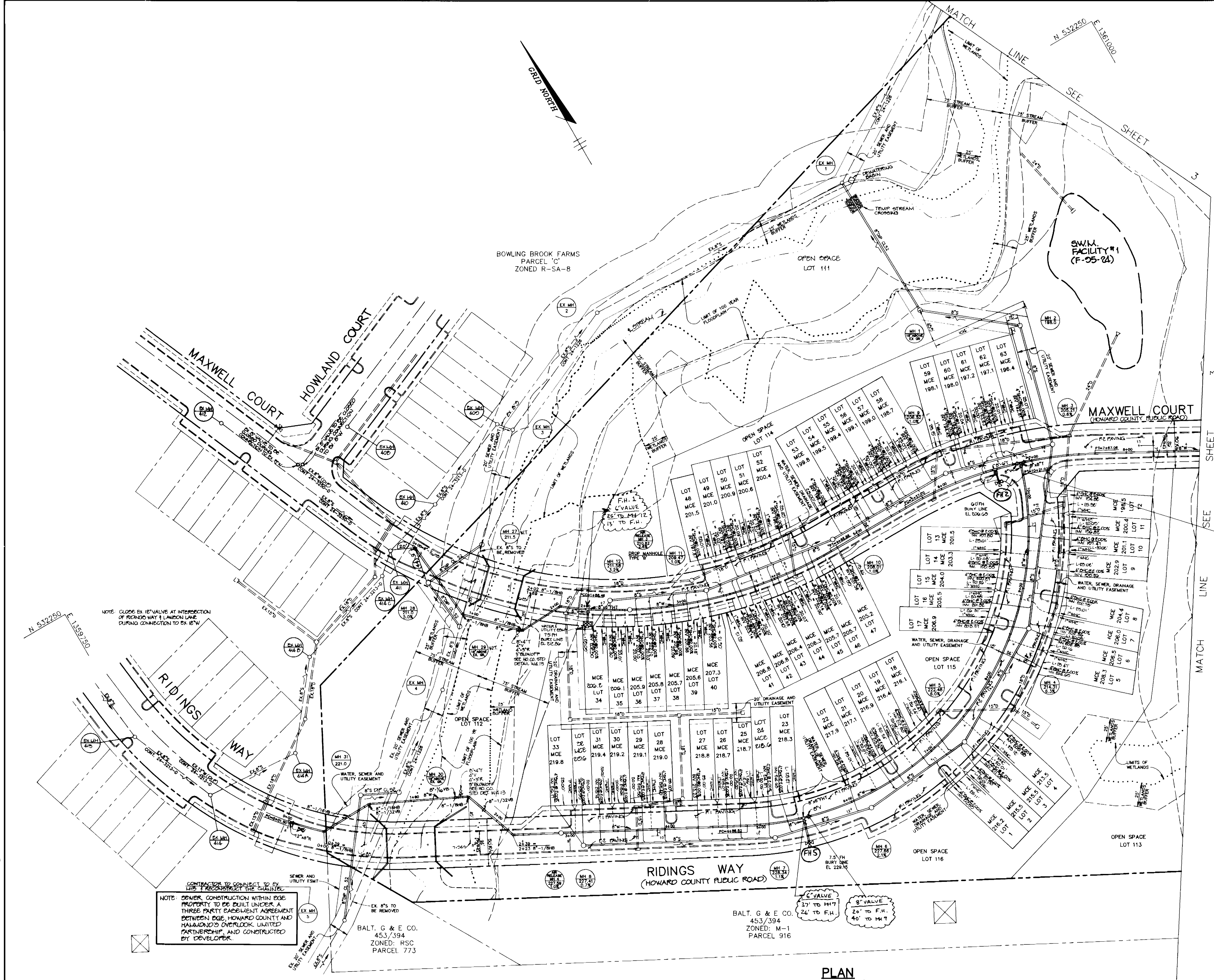
SEWER MANHOLE	LOCATION
1	SEE SHEET 2
2	7' LT OF CL STA 12+10 MAXWELL COURT
3	9' RT OF CL STA 14+71 RIDINGS WAY
4	11' RT OF CL STA 13+37 RIDINGS WAY
5	8' RT OF CL STA 12+20 RIDINGS WAY
6	8' RT OF CL STA 11+15 RIDINGS WAY
7	7' RT OF CL STA 9+14 MAXWELL COURT
8	7' LT OF CL STA 9+58 MAXWELL COURT
9	3' LT OF CL STA 8+12 MAXWELL COURT
10	3' LT OF CL STA 7+09 MAXWELL COURT
11	SEE SHEET 3
12	SEE SHEET 3
13	SEE SHEET 3
14	SEE SHEET 3
15	SEE SHEET 3
16	3' RT OF CL STA 22+87 MAXWELL COURT
17	7' LT OF CL STA 20+30 MAXWELL COURT
18	7' LT OF CL STA 18+95 MAXWELL COURT
19	8' LT OF CL STA 17+81 MAXWELL COURT
20	5' LT OF CL STA 16+53 MAXWELL COURT
21	4' LT OF CL STA 15+71 KATIE LANE
22	4' LT OF CL STA 14+57 KATIE LANE
23	7' LT OF CL STA 2+29 KATIE LANE
24	3' LT OF CL STA 1+00 KATIE LANE
25	6' LT OF CL STA 1+81 KATIE LANE
26	SEE SHEET 3
27	38' LT OF CL STA 5+58 MAXWELL COURT
28	21' RT OF CL STA 5+20 MAXWELL COURT
29	52' RT OF CL STA 5+84 MAXWELL COURT
30	51' LT OF CL STA 8+73 RIDINGS WAY
31	58' RT OF CL STA 7+21 RIDINGS WAY

AIR RELEASE MANHOLE	LOCATION
1	4' RT OF CL STA 0+00 KATIE LANE
2	7' RT OF CL STA 17+32 MAXWELL COURT
3	7' RT OF CL STA 7+30 MAXWELL COURT
4	7' LT OF CL STA 8+91 RIDINGS WAY



WATER HOUSE CONNECTION DATA

--- --- ---	TYP. TWIN WHC
--- ---	TYP. SINGLE WHC



NOTE: CLOSE EX 18" VALVE AT INTERSECTION OF RIDINGS WAY & LANDON LANE DURING CONNECTION TO EX 18" W

NOTE: COVER CONSTRUCTION WITHIN EDGE PROPERTY TO BE BUILT UNDER A THREE PARTY EASEMENT AGREEMENT BETWEEN EDGE, HOWARD COUNTY AND HAMMOND'S OVERLOOK LIMITED PARTNERSHIP, AND CONSTRUCTED BY DEVELOPER.

BALT. G & E CO.
453/394
ZONED: M-1
PARCEL 916

PLAN
SCALE: 1"=50'

DEPARTMENT OF PUBLIC WORKS
HOWARD COUNTY, MARYLAND

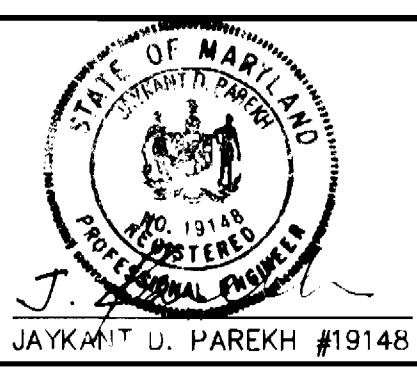
James J. Shaw 12/8/94
DIRECTOR OF PUBLIC WORKS DATE

Robert J. Seaman 12/8/94
CHIEF, BUREAU OF ENGINEERING DATE

Robert J. Seaman 11-23-94
CHIEF, BUREAU OF UTILITIES DATE

William J. ... 12/8/94
CHIEF, LAND DEVELOPMENT DATE

RIEMER MUEGGE & ASSOCIATES, INC.
Planners • Engineers • Surveyors
8818 Centre Park Drive • Suite 200 • Columbia, Md 21045
410-997-8900 FAX: 410-997-9282



DES: C.J.R.	
DRN: DAM	
CHK: JOP	
DATE: 11-22-94	
BY: NO.	
REVISION	
DATE	

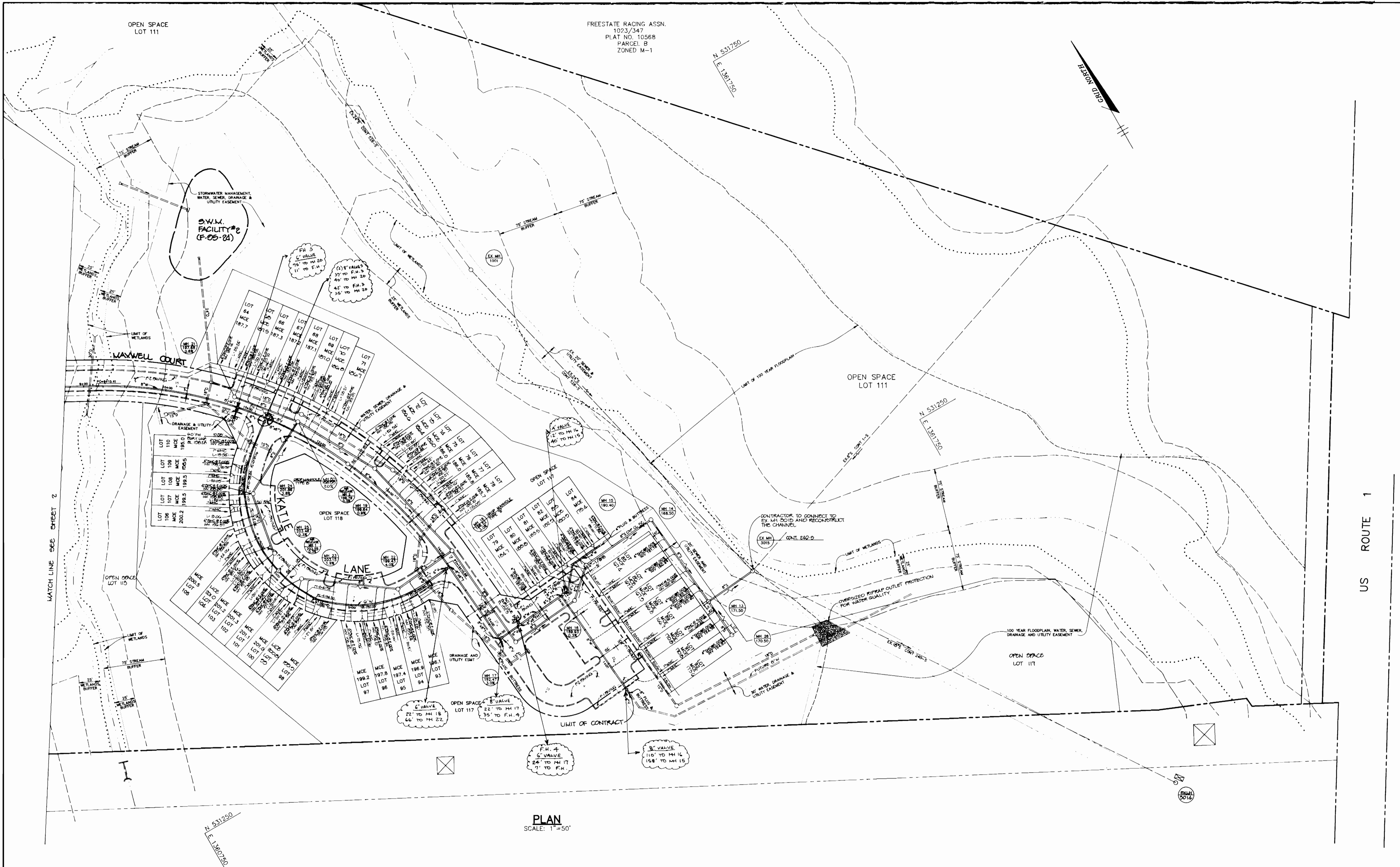
PLAN OF WATER AND SEWER MAINS

600' SCALE MAP NO. 47 BLOCK NO. 23

HAMMOND'S OVERLOOK
A RESUBDIVISION OF PARCEL 'A' BOLLING BROOKE
LOTS 1 THRU 118
6th ELECTION DISTRICT
HOWARD COUNTY, MARYLAND
CONTRACT NO. 24-3359-D

SCALE AS SHOWN
SHEET 2 OF 6

3359 WS/3 HAMMOND'S OVERLOOK



PLAN
SCALE: 1"=50'

DEPARTMENT OF PUBLIC WORKS
HOWARD COUNTY, MARYLAND

James J. Shaw 12/8/94
DIRECTOR OF PUBLIC WORKS DATE

Robert J. Deane 11/23/94
CHIEF, BUREAU OF UTILITIES DATE

Paul J. Deane 12/8/94
CHIEF, BUREAU OF ENGINEERING DATE

William J. Deane 12/8/94
CHIEF, LAND DEVELOPMENT DATE

RIEMER MUEGGE & ASSOCIATES, INC.
Planners • Engineers • Surveyors
8818 Centre Park Drive • Suite 200 • Columbia, Md 21045
410-997-8900 FAX: 410-997-9282



DES: C.J.R.			
DRN: DAM			
CHK: J.D.P.			
DATE: 11-22-94			
BY: NO.	REVISION	DATE	

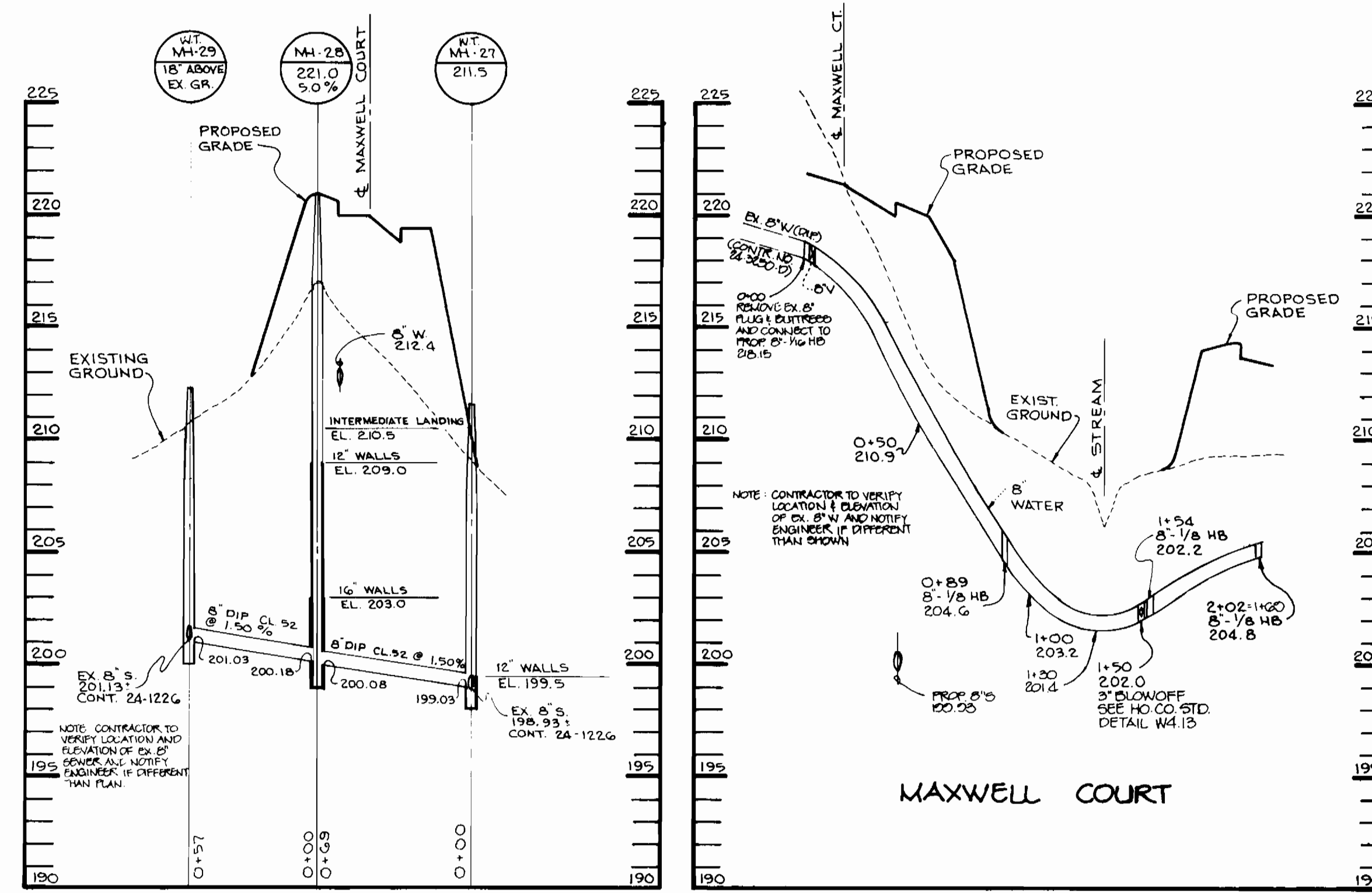
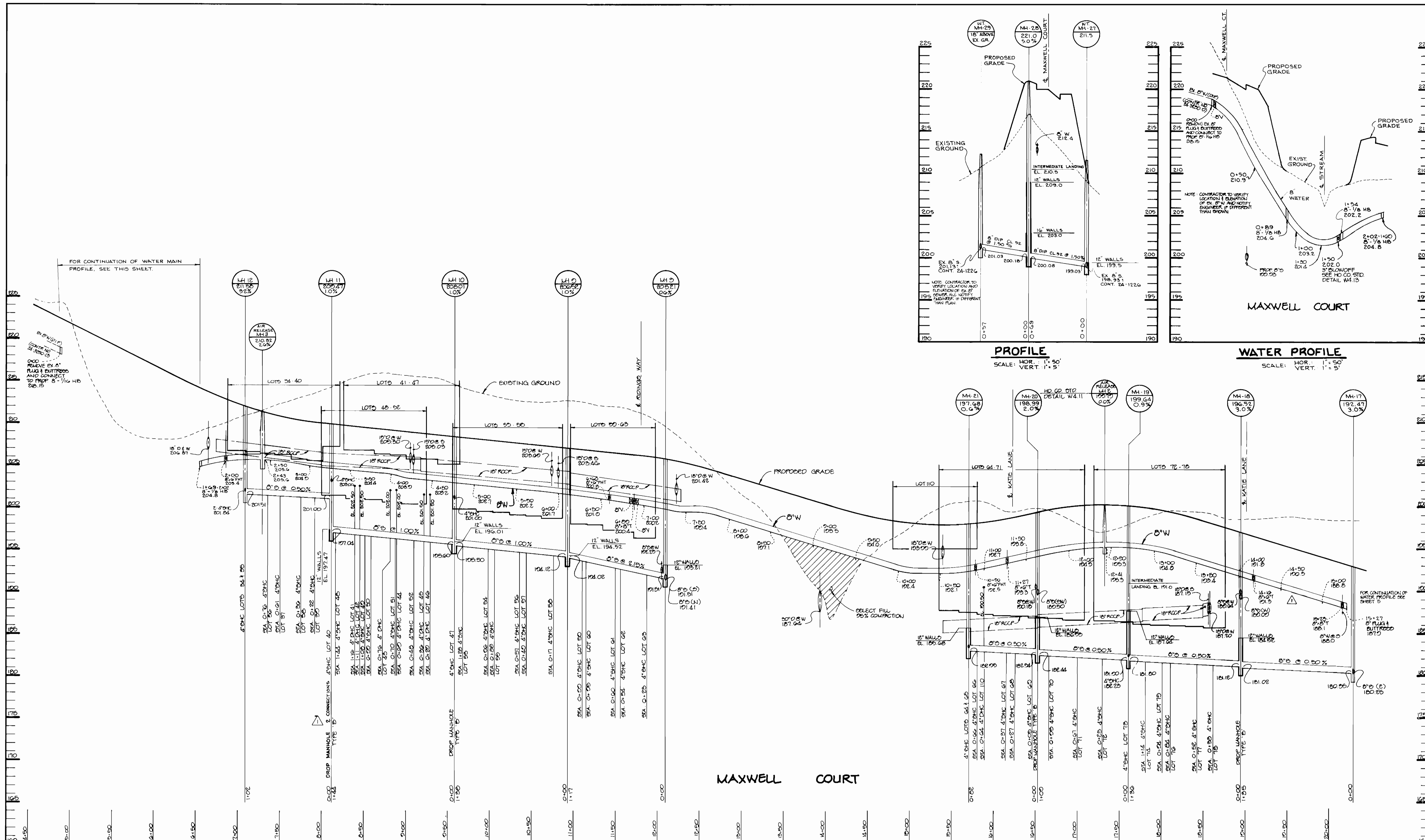
PLAN OF WATER AND SEWER MAINS

600' SCALE MAP NO. 47 BLOCK NO. 23

HAMMOND'S OVERLOOK
A RESUBDIVISION OF PARCEL 'A' BOLLING BROOKE
LOTS 1 THRU 118
6th ELECTION DISTRICT
HOWARD COUNTY, MARYLAND
CONTRACT NO. 24-3359-D

SCALE AS SHOWN
SHEET 3 OF 6

3359 WS/4 HAMMOND'S OVERLOOK



PROFILE
SCALE: HOR. 1"=50'
VERT. 1"=5'

DEPARTMENT OF PUBLIC WORKS
HOWARD COUNTY, MARYLAND

James J. Shroyer 12/8/94
DIRECTOR OF PUBLIC WORKS DATE

Richard D. Reppert 12/8/94
CHIEF, BUREAU OF ENGINEERING DATE

Robert M. Benjamin 11-23-94
CHIEF, BUREAU OF UTILITIES DATE

John C. Williams 12/8/94
CHIEF, LAND DEVELOPMENT DATE

RIEMER MUEGGE & ASSOCIATES, INC.
Planners • Engineers • Surveyors
8818 Centre Park Drive • Suite 200 • Columbia, Md 21045
410-997-8900 FAX : 410-997-9282



DES: C.J.R.	
DRN: DAM	
CHK: J.D.P.	
DATE: 11-22-94	
BY: NO.	
REVISION	

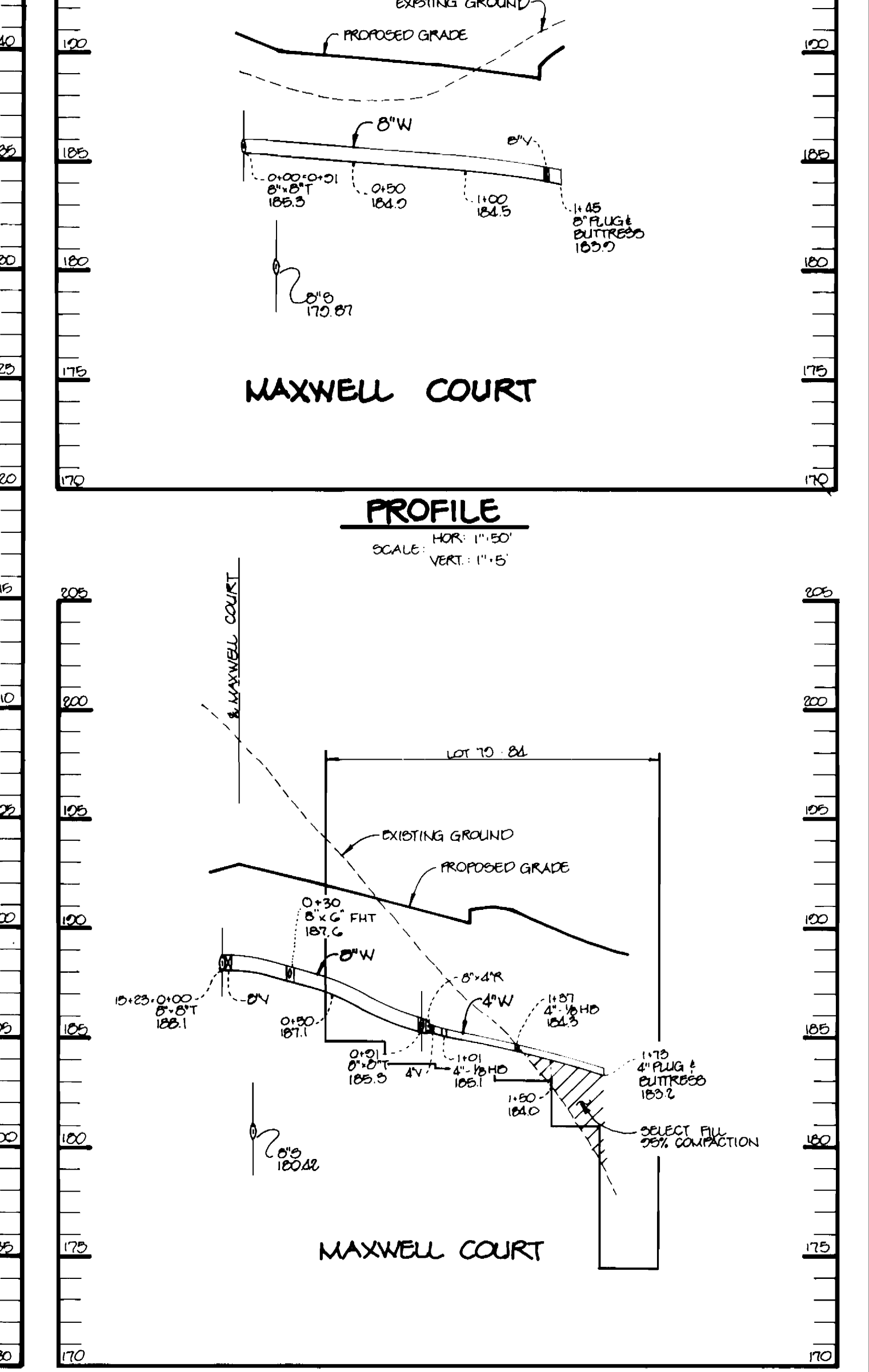
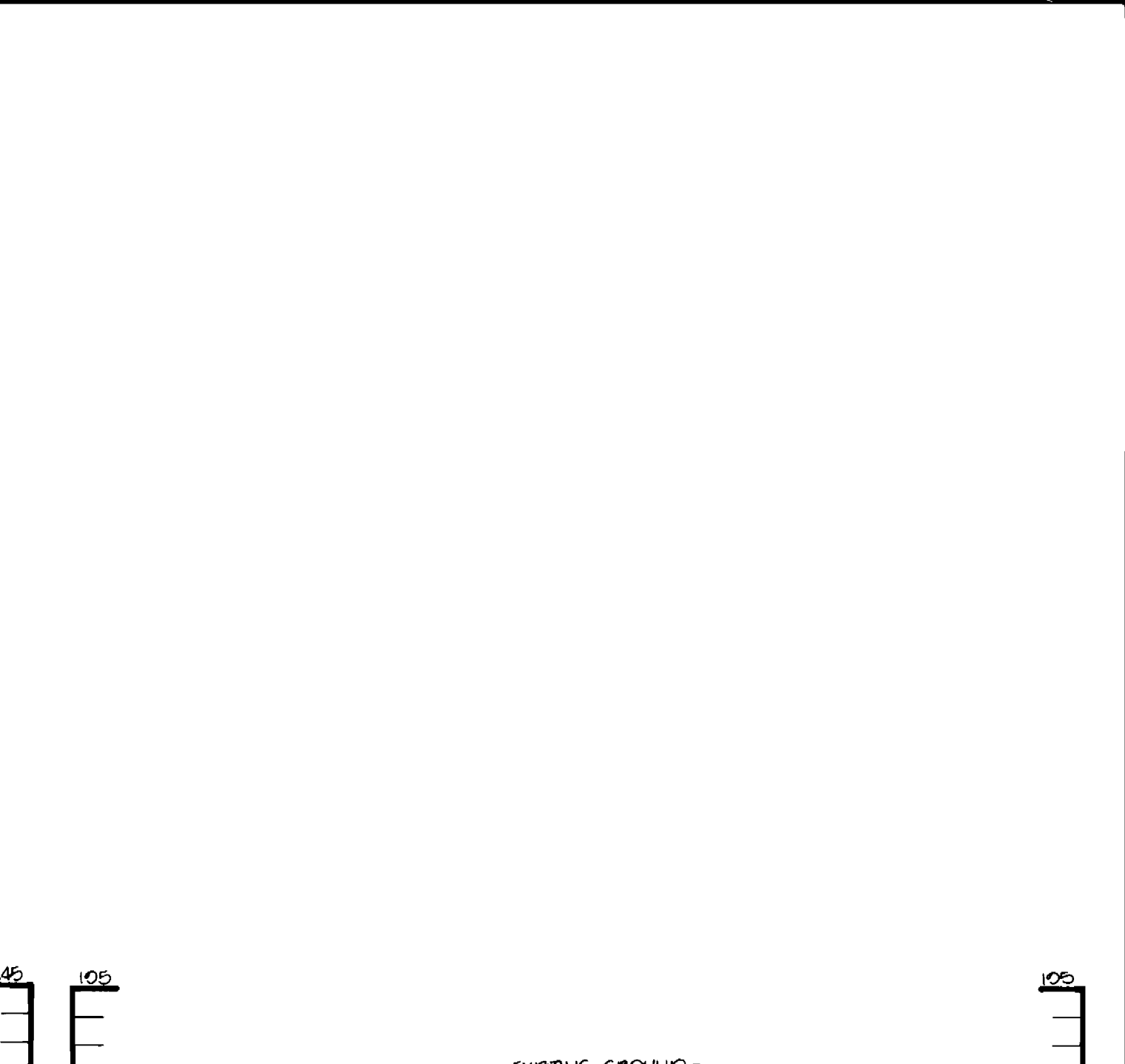
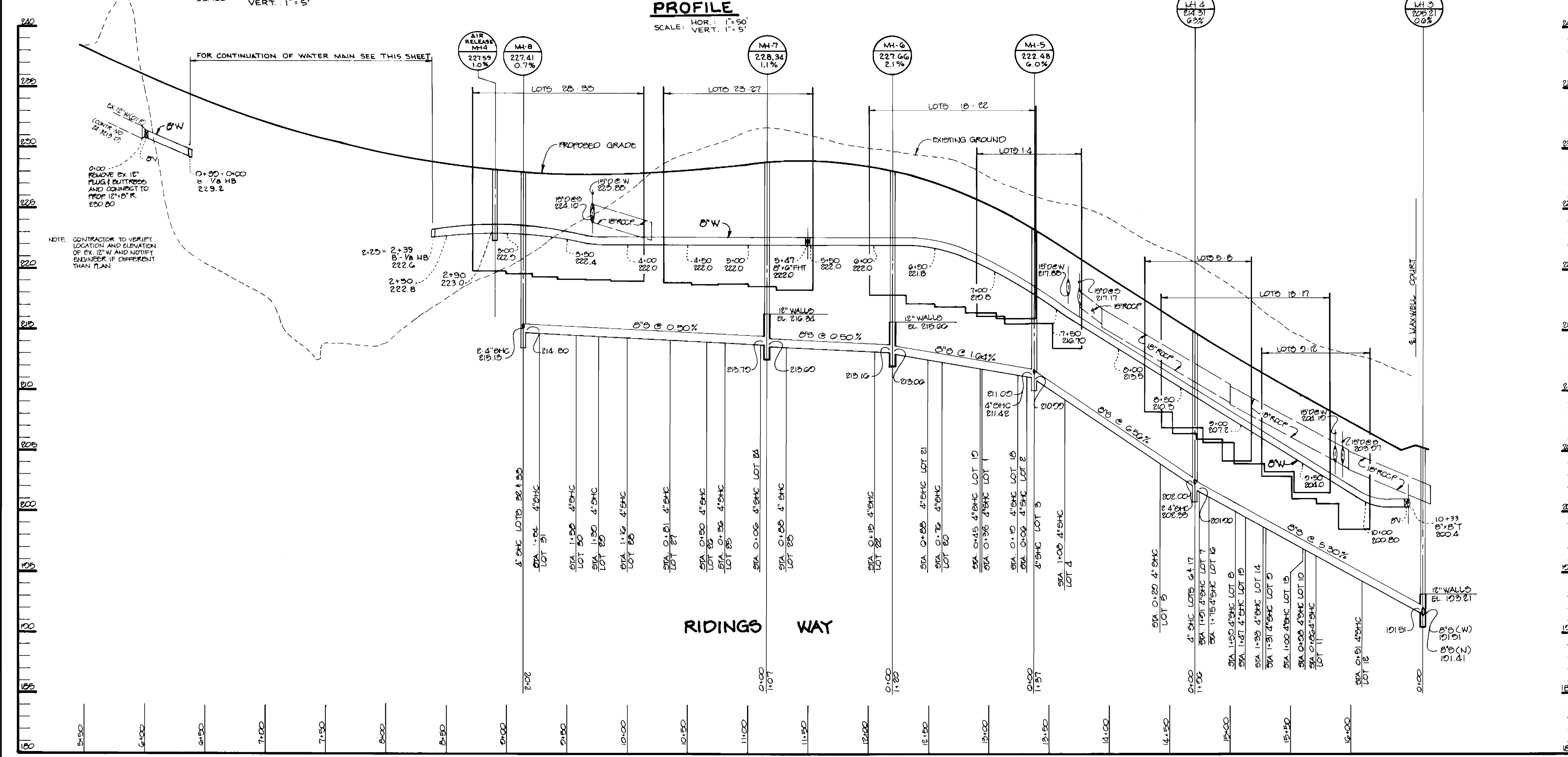
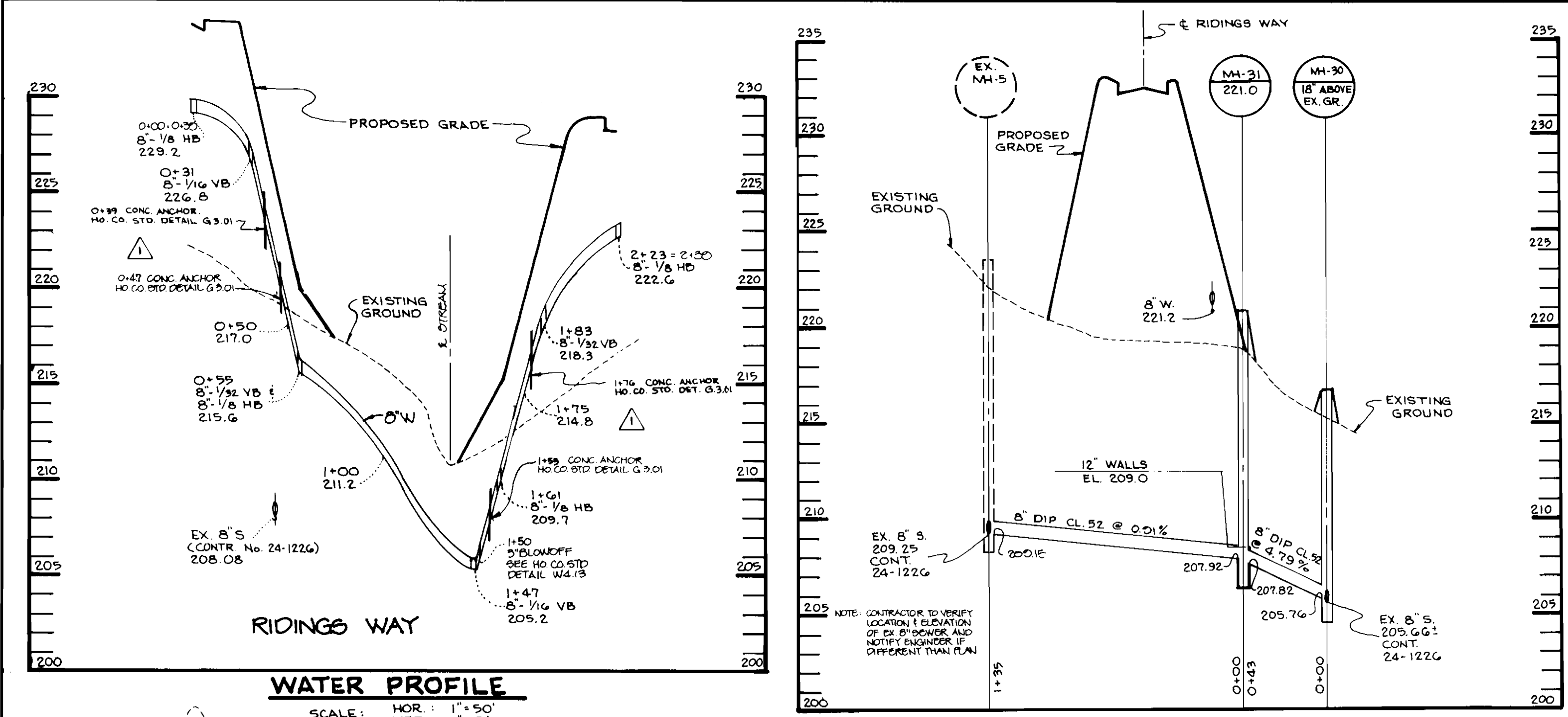
PROFILES OF WATER AND SEWER MAINS

600' SCALE MAP NO. 47 BLOCK NO. 23

HAMMOND'S OVERLOOK
A RESUBDIVISION OF PARCEL 'A' BOLLING BROOKE
LOTS 1 THRU 118
6th ELECTION DISTRICT
HOWARD COUNTY, MARYLAND
CONTRACT NO. 24-3359-D

SCALE AS SHOWN
SHEET 4 OF 6

3359 WS/5 HAMMOND'S OVERLOOK



DEPARTMENT OF PUBLIC WORKS
HOWARD COUNTY, MARYLAND

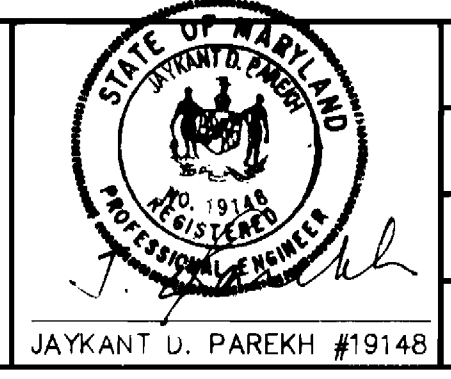
James J. ... 12/8/94
DIRECTOR OF PUBLIC WORKS DATE

Robert J. ... 12/8/94
CHIEF, BUREAU OF ENGINEERING DATE

Robert N. ... 11-23-94
CHIEF, BUREAU OF UTILITIES DATE

Chad ... 12/6/94
CHIEF, LAND DEVELOPMENT DATE

RIEMER MUEGGE & ASSOCIATES, INC.
Planners • Engineers • Surveyors
8818 Centre Park Drive • Suite 200 • Columbia, Md 21045
410-997-8800 FAX: 410-997-9282



DES: C.J.R.					
DRN: DAM					
CHK: J.O.P.					
DATE: 11-22-94					
WAD	2	REV. OHC LOCATIONS - LOTS 1, 8, 11, 16, 18, 10, 21		0-20-92	
R.C.	1	REV. LOCATION 2 CONC. ANCHOR & Added 2 Anchors W/P		2/95	
BY	NO.	REVISION		DATE	

PROFILES OF WATER AND SEWER MAINS

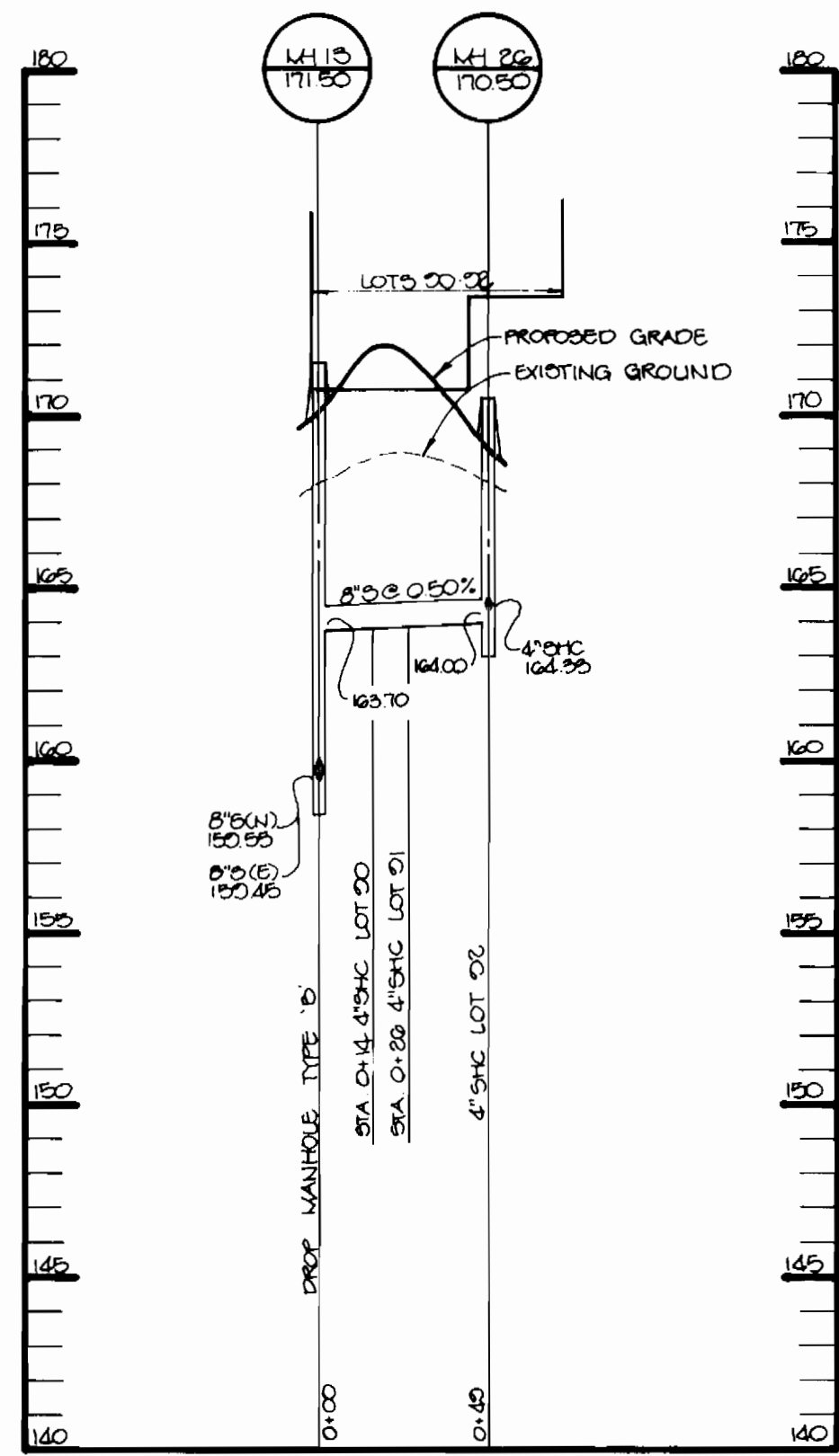
600' SCALE MAP NO. 47 BLOCK NO. 23

HAMMOND'S OVERLOOK
A RESUBDIVISION OF PARCEL 'A' BOLLING BROOKE
LOTS 1 THRU 118
6th ELECTION DISTRICT
HOWARD COUNTY, MARYLAND
CONTRACT NO. 24-3359-D

SCALE AS SHOWN

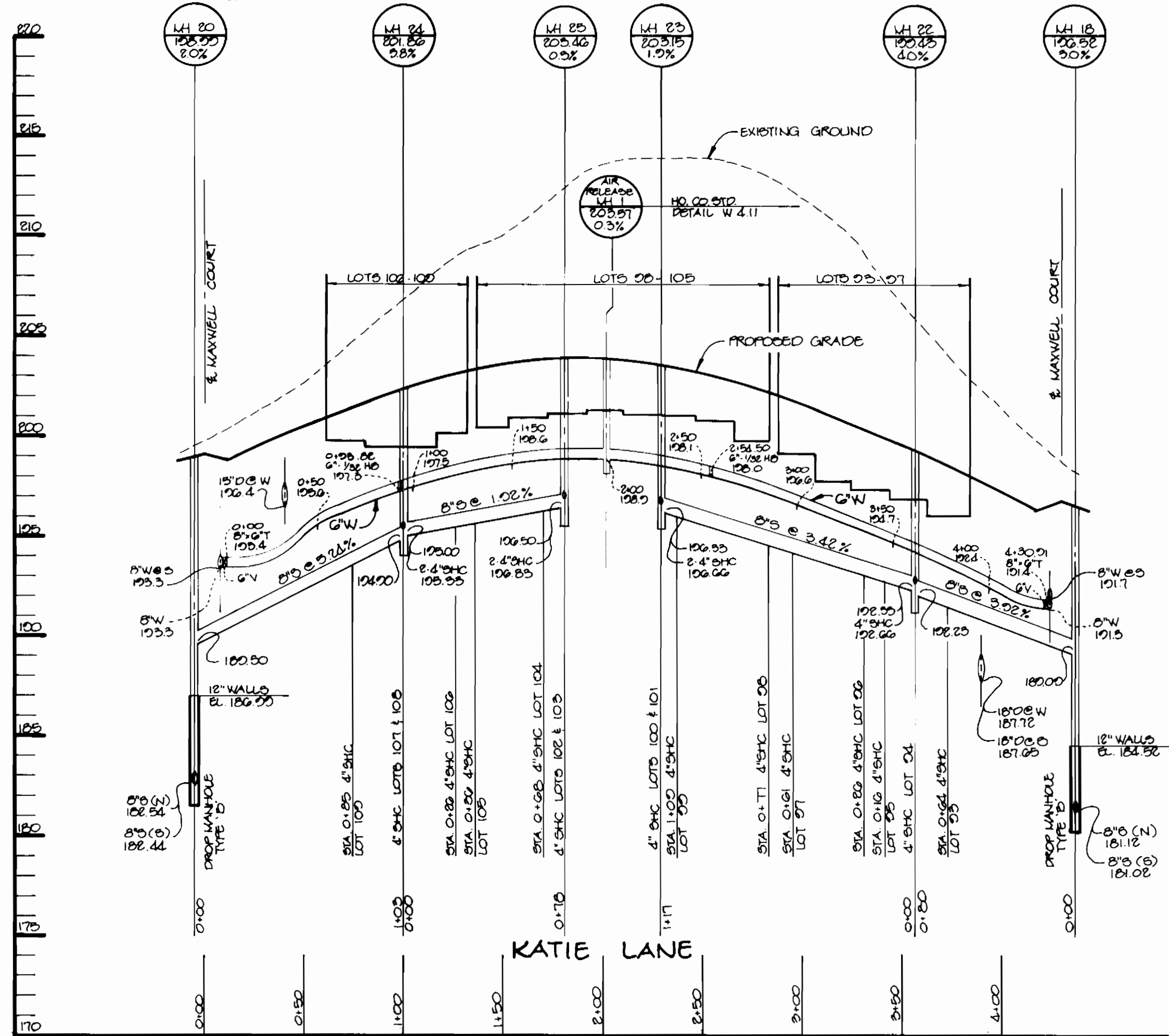
SHEET 5 OF 6

3359 WS/6 HAMMOND'S OVERLOOK



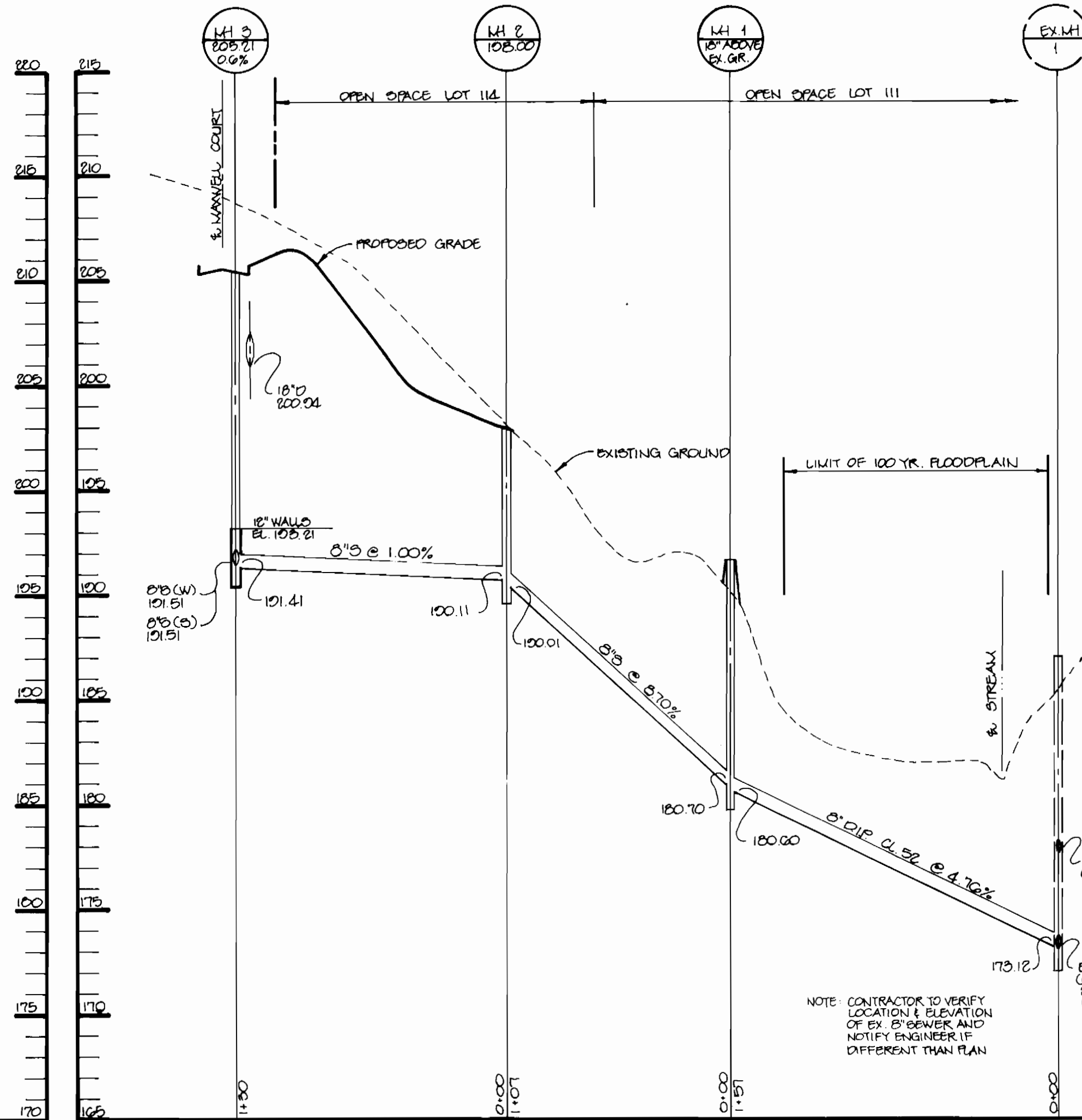
PROFILE

SCALE: HOR: 1"=50'
VERT: 1"=5'



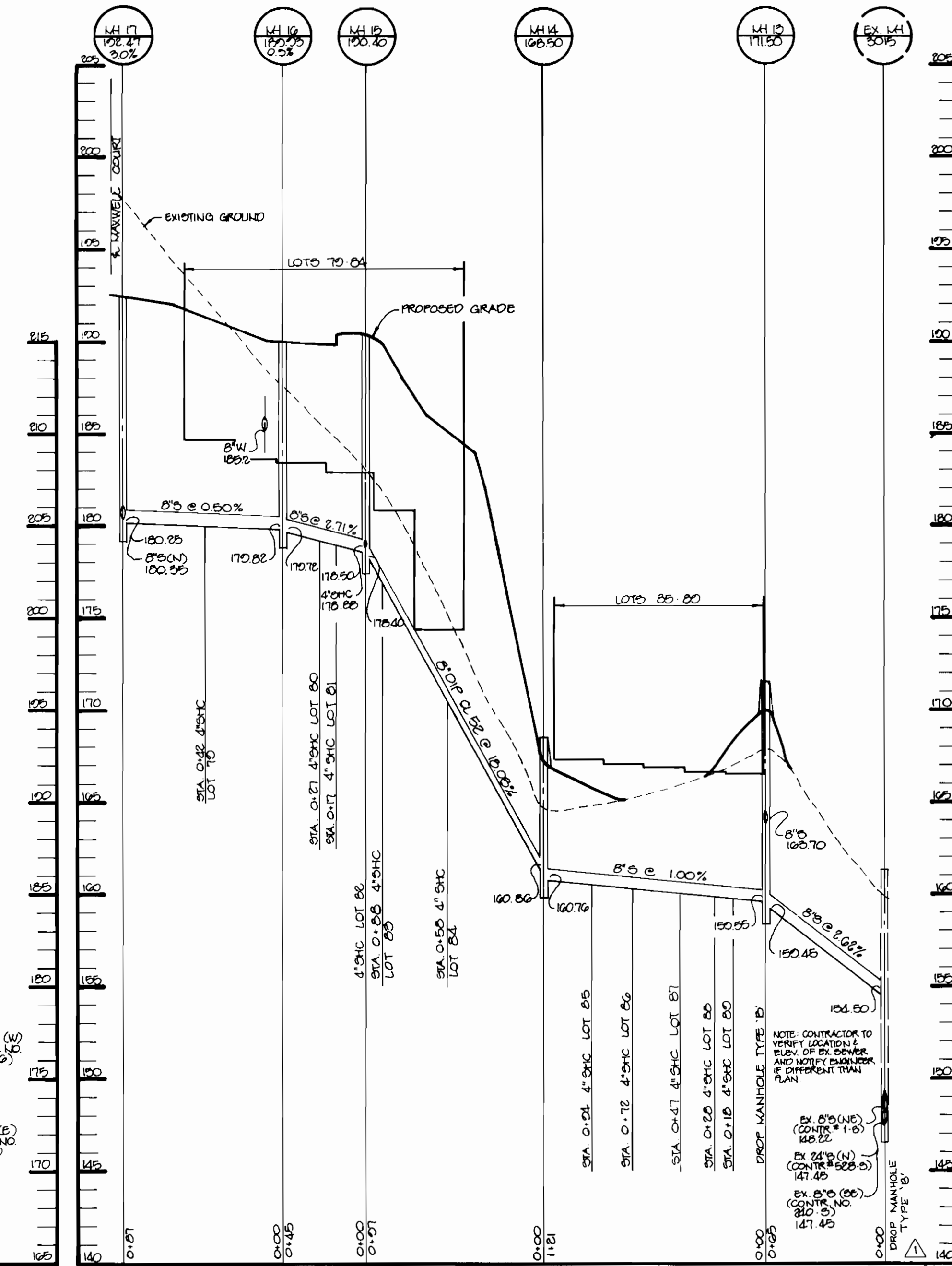
PROFILE

SCALE: HOR: 1"=50'
VERT: 1"=5'



PROFILE

SCALE: HOR: 1"=50'
VERT: 1"=5'



PROFILE

SCALE: HOR: 1"=50'
VERT: 1"=5'

DEPARTMENT OF PUBLIC WORKS
HOWARD COUNTY, MARYLAND

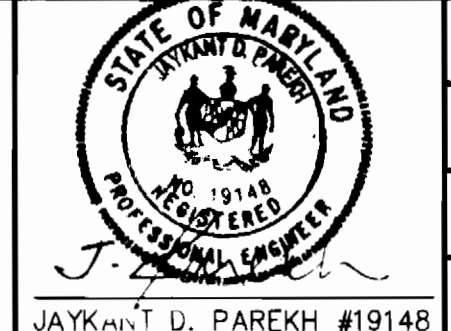
James J. Shaw 12/28/94
DIRECTOR OF PUBLIC WORKS DATE

Richard J. Brown 12/8/94
CHIEF, BUREAU OF ENGINEERING DATE

Robert J. Bennett 11-23-94
CHIEF, BUREAU OF UTILITIES DATE

Chuck Goodman 12/19/94
CHIEF, LAND DEVELOPMENT DATE

RIEMER MUEGGE & ASSOCIATES, INC.
Planners • Engineers • Surveyors
8818 Centre Park Drive • Suite 200 • Columbia, Md 21045
410-997-8900 FAX: 410-997-9282



DES: C.J.R.					
DRN: DAM					
CHK: J.D.P.	WAD	2	REV. EHC LOCATIONS - LOTS 80, 84, 87, 88, 89, 100	5/20/95	
DATE: 11-22-94	RIC	1	Added Designator "Drop MH - Type 'B'" To S Profile Lane Right.	2/95	
	BY	NO.	REVISION	DATE	

PROFILES OF
WATER AND SEWER MAINS

600' SCALE MAP NO. 47 BLOCK NO. 23

HAMMOND'S OVERLOOK
A RESUBDIVISION OF PARCEL 'A' BOLLING BROOKE
LOTS 1 THRU 118
6th ELECTION DISTRICT
HOWARD COUNTY, MARYLAND
CONTRACT NO. 24-3359-D

SCALE AS SHOWN
SHEET 6 OF 6

AS-BLT
 2-26-96

3359 AS-BUILT INFO.

SEWER AS-BUILTS			WATER AS-BUILTS		
LOT #	DESCRIPTION	LOT #	DESCRIPTION	LOT #	DESCRIPTION
1	49' TO MH 4 66' TO MH 6	41	42' TO MH 11 121' TO MH 10	81	42' TO MH 16 28' TO MH 15
2	117' TO MH 6 28' TO MH 4	42	44' TO MH 11 115' TO MH 10	82	54' TO MH 16 17' TO MH 15
3	136' TO MH 6 25' TO MH 4	43	77' TO MH 11 83' TO MH 10	83	20' TO MH 15 91' TO MH 14
4	44' TO MH 5 113' TO MH 4	44	82' TO MH 11 78' TO MH 10	84	41' TO MH 15 65' TO MH 14
5	113' TO MH 5 44' TO MH 4	45	48' TO MH 10 114' TO MH 11	85	95' TO MH 13 31' TO MH 14
6	142' TO MH 5 25' TO MH 4	46	120' TO MH 11 43' TO MH 10	86	73' TO MH 13 59' TO MH 14
7	156' TO MH 5 28' TO MH 4	47	28' TO MH 10 143' TO MH 9	87	46' TO MH 13 15' TO MH 14
8	51' TO MH 4 138' TO F.H. 2	48	91' TO AR.MH 3 33' TO MH 11	88	30' TO MH 13 77' TO MH 26
9	65' TO MH 4 118' TO F.H. 2	49	115' TO MH 10 46' TO MH 11	89	20' TO MH 13 67' TO MH 26
10	95' TO F.H. 2 101' TO MH 3	50	104' TO MH 10 55' TO MH 11	90	18' TO MH 13 36' TO MH 24
11	92' TO MH 3 87' TO F.H. 2	51	75' TO MH 10 80' TO MH 11	91	27' TO MH 13 27' TO MH 26
12	76' TO MH 3 74' TO F.H. 2	52	58' TO MH 10 100' TO MH 11	92	51' TO MH 13 16' TO MH 26
13	53' TO F.H. 2 103' TO MH 4	53	34' TO MH 10 133' TO MH 9	93	37' TO MH 22 73' TO MH 18
14	75' TO MH 4 55' TO F.H. 2	54	53' TO MH 10 103' TO MH 9	94	30' TO MH 22 93' TO MH 18
15	65' TO MH 4 101' TO F.H. 2	55	60' TO MH 10 95' TO MH 9	95	44' TO F.H. 2 110' TO MH 23
16	128' TO F.H. 2 48' TO MH 4	56	66' TO MH 9	96	49' TO MH 22 99' TO MH 23
17	125' TO MH 5 45' TO MH 4	57	95' TO MH 10 60' TO MH 9	97	76' TO MH 22 74' TO MH 23
18	49' TO MH 5 111' TO MH 6	58	38' TO MH 9 93' TO F.H. 2	98	88' TO MH 22 61' TO MH 23
19	42' TO MH 5 83' TO MH 6	59	37' TO MH 9 66' TO F.H. 2	99	42' TO MH 23 65' TO MH 25
20	88' TO MH 5 61' TO MH 6	60	42' TO MH 9 63' TO F.H. 2	100	34' TO MH 23 49' TO MH 25
21	96' TO MH 5 54' TO MH 6	61	65' TO MH 9 70' TO MH 3	101	47' TO MH 23 45' TO MH 25
22	99' TO MH 7 44' TO MH 6	62	63' TO MH 9 73' TO MH 9	102	42' TO MH 23 45' TO MH 25
23	61' TO F.H. 5 47' TO MH 7	63	41' TO MH 3 98' TO MH 9	103	58' TO MH 23 33' TO MH 25
24	65' TO F.H. 5 44' TO MH 7	64	68' TO F.H. 2 42' TO MH 21	104	74' TO F.H. 5 37' TO MH 25
25	87' TO F.H. 5 56' TO MH 7	65	57' TO F.H. 2 34' TO MH 21	105	55' TO MH 25 53' TO MH 24
26	100' TO F.H. 5 68' TO MH 7	66	51' TO F.H. 2 39' TO MH 21	106	64' TO MH 25 45' TO MH 24
27	92' TO MH 7 127' TO F.H. 5	67	68' TO F.H. 2 55' TO MH 21	107	92' TO MH 25 30' TO MH 24
28	114' TO AR.MH 4 94' TO MH 8	68	67' TO MH 21 44' TO MH 20	108	89' TO MH 25 30' TO MH 24
29	93' TO AR.MH 4 78' TO MH 8	69	31' TO MH 20 83' TO MH 21	109	47' TO MH 24 95' TO MH 20
30	74' TO AR.MH 4 63' TO MH 8	70	80' TO AR.MH 2 38' TO MH 20	110	55' TO MH 21 78' TO MH 20
31	50' TO AR.MH 4 44' TO MH 8	71	58' TO AR.MH 2 52' TO MH 20		
32	37' TO AR.MH 4 45' TO MH 8	72	43' TO AR.MH 2 40' TO MH 19		
33	30' TO AR.MH 4 53' TO MH 8	73	33' TO MH 19 54' TO AR.MH 2		
34	34' TO MH 12 7' TO F.H. 1	74	40' TO MH 19 73' TO AR.MH 2		
35	28' TO MH 12 28' TO F.H. 1	75	55' TO MH 19 85' TO AR.MH 2		
36	40' TO MH 12 26' TO AR.MH 3	76	61' TO MH 19 95' TO AR.MH 2		
37	53' TO MH 12 28' TO AR.MH 3	77	64' TO MH 18 90' TO MH 19		
38	50' TO AR.MH 3 47' TO MH 11	78	108' TO MH 19 46' TO MH 18		
39	58' TO MH 11 61' TO AR.MH 3	79	60' TO MH 16 64' TO MH 17		
40	28' TO MH 11 84' TO AR.MH 3	80	46' TO MH 16 46' TO MH 15		

DEPARTMENT OF PUBLIC WORKS HOWARD COUNTY, MARYLAND		DES: _____ DRN: _____ CHK: _____ DATE: _____		SEWER & WATER AS-BUILTS		HAMMOND'S OVERLOOK LOTS 1 THRU 118 CONTRACT NO. 24-3359-D		SCALE AS SHOWN
DIRECTOR OF PUBLIC WORKS _____ DATE _____ CHIEF, BUREAU OF ENGINEERING _____ DATE _____		BY _____ NO. _____ REVISION _____		600' SCALE MAP NO. _____ BLOCK NO. _____		SHEET 6A OF 6		