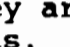


3348 w/1 Harthorn Ave H₂O Ext. & S-6694

GENERAL NOTES

- Approximate location of existing mains are shown. The Contractor shall take all necessary precautions to protect existing mains and services and maintain uninterrupted service. Any damage incurred shall be repaired immediately to the satisfaction of the Engineer at the Contractor's expense.
- All horizontal controls are based on Maryland State Coordinates.
- All vertical controls are based on U.S.G.S. data.
- All pipe elevations shown are invert elevations unless otherwise noted on the plans.
- Clear all utilities by a minimum of 6". Clear all poles by 2'-0" minimum or tunnel as required. The owner has contacted the utility companies and has made arrangements for bracing of poles as shown on the drawings. In the event the Contractor's work requires the bracing of additional poles, any cost incurred by the owner for the bracing of additional poles or damages shall be deducted from money owed the Contractor. The Contractor shall coordinate with the utility companies to schedule the bracing of the poles.
- For details not shown on the drawings, and for materials and construction methods, use Howard County Design Manual, Volume IV, Standard Specifications and Details for Construction (Latest Edition). The Contractor shall have a copy of Volume IV on the job.
- Where test pits have been made on existing utilities, they are noted by the symbol  at the location of the test pits. A note or notes containing the results of the test pit or pits is included on the drawings. Existing utilities in the vicinity of the proposed work for which test pits have not been dug shall be located by the Contractor two weeks in advance of construction operations at his own expense.
- Contractor shall notify the following utility companies or agencies at least five working days before starting work shown on these plans:

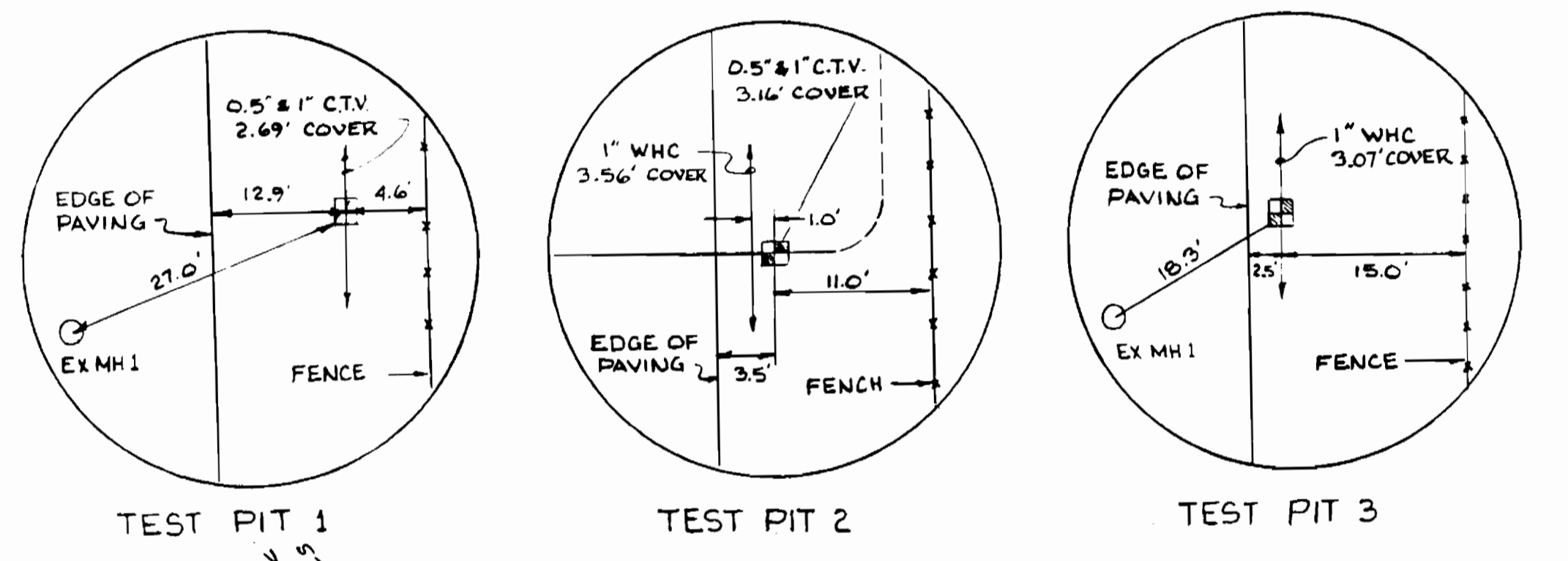
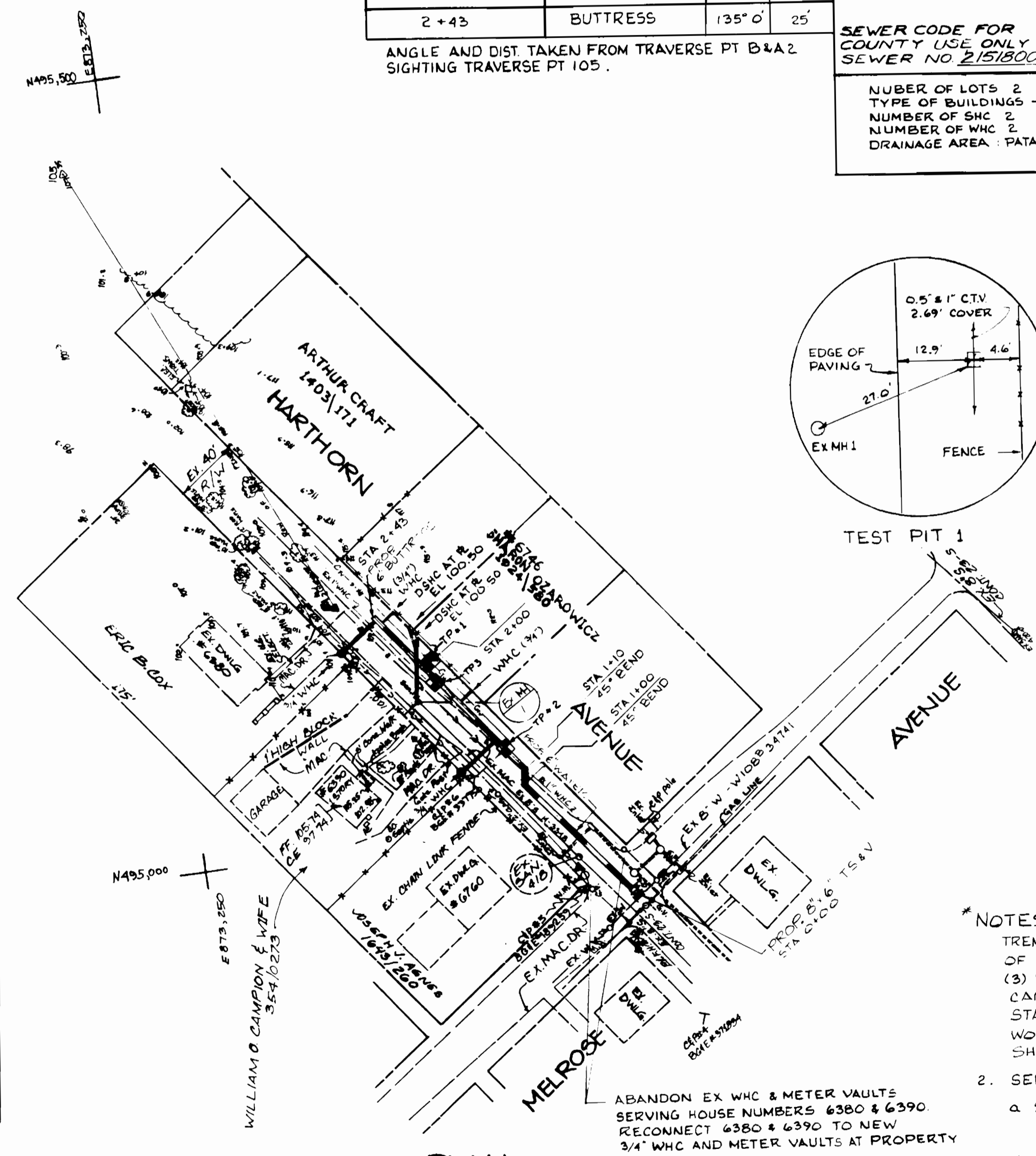
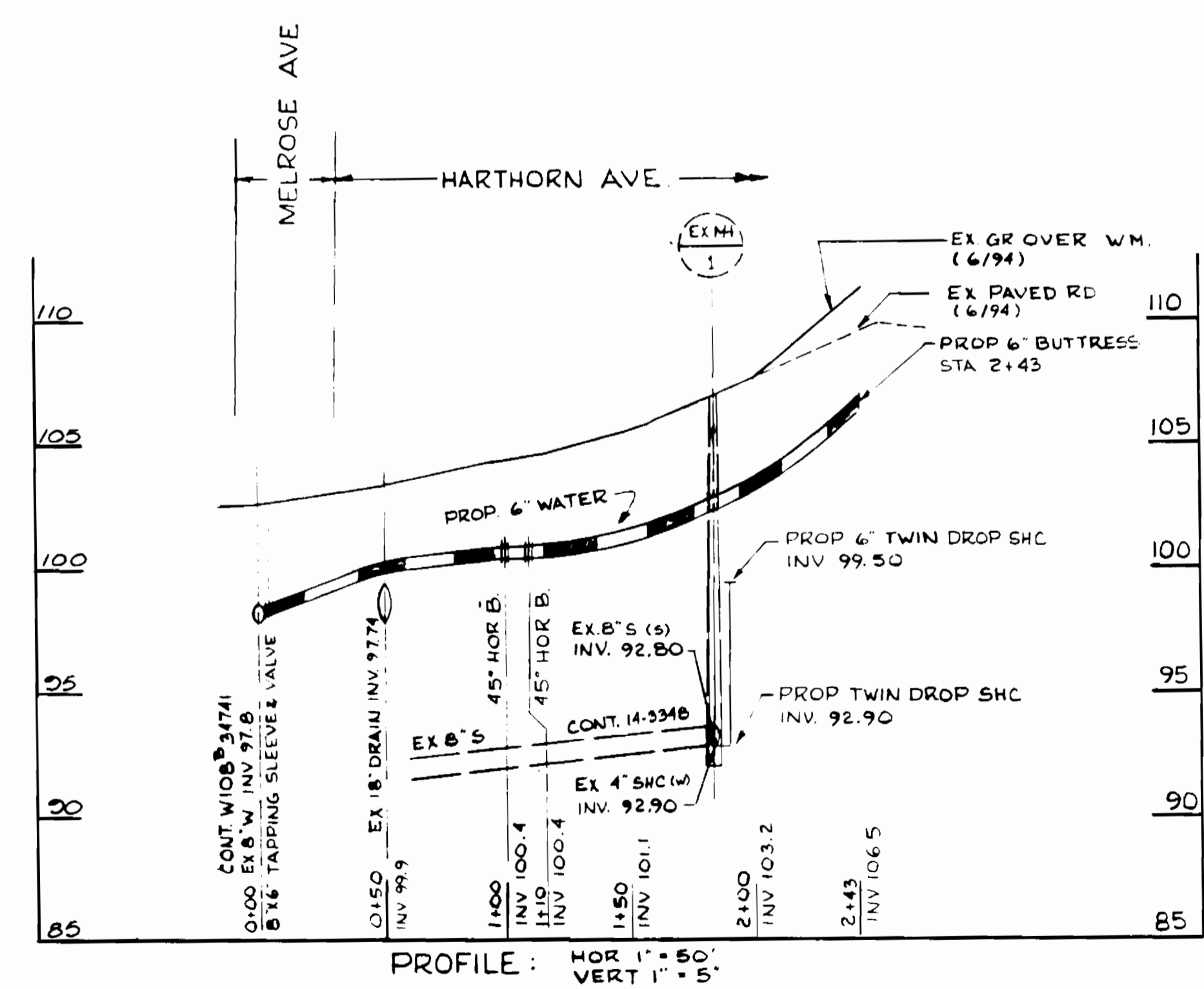
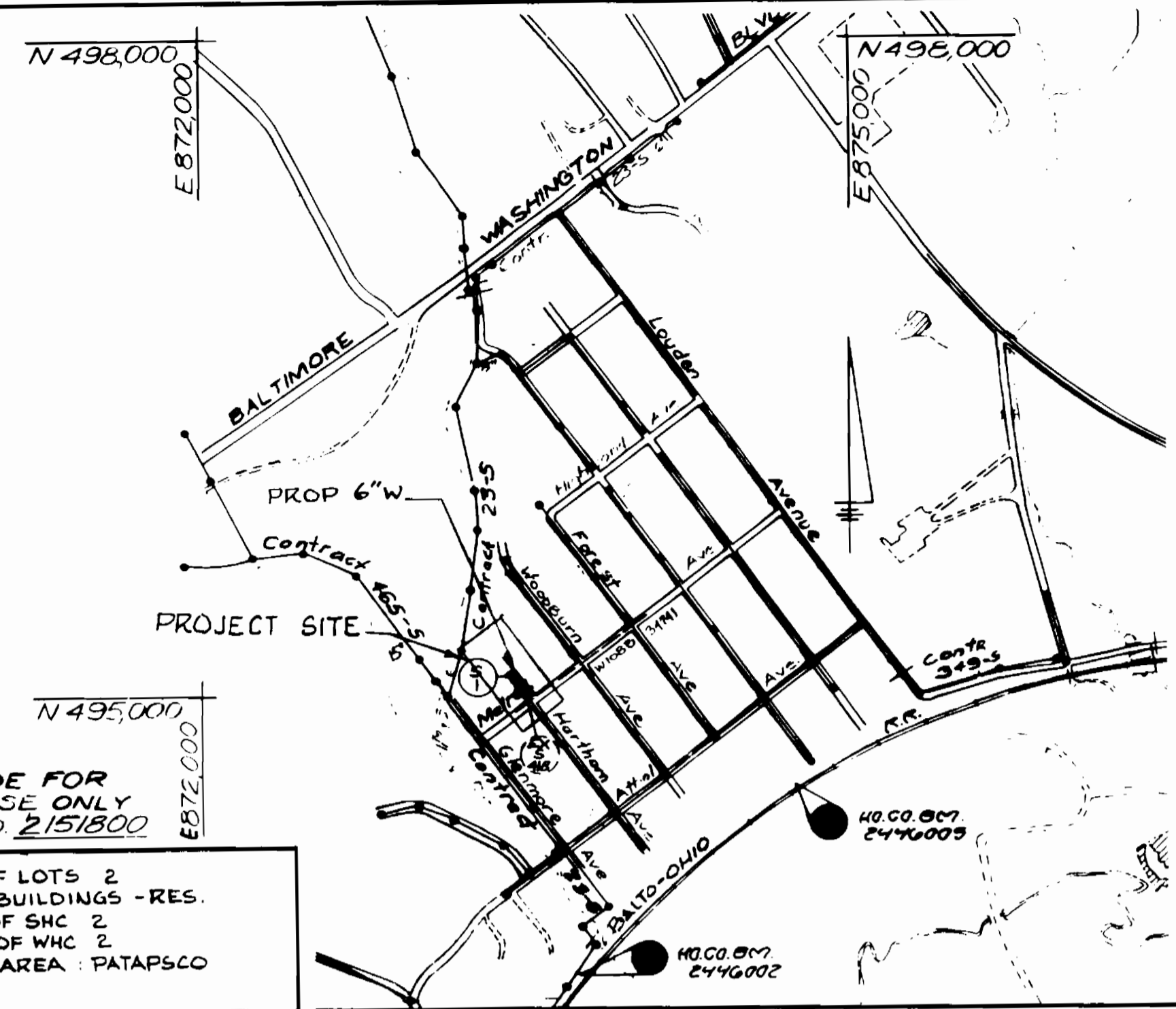
AT&T.....865-3803
 BGE (Contractor Services).....850-4620
 BGE (Underground Damage Control).....787-9068
 Bureau of Utilities.....313-4900
 Bell Atlantic Maryland, Inc.....597-8585
 Colonial Pipeline Co.....795-1390
 Miss Utility.....1-800-257-7777
 State Highway Administration.....531-5533

QUANTITIES				
ITEM	UNIT	ESTIMATE	AS BUILT	SUPPLIER
6" WATER MAIN	LF	243'		
3/4" WHC	LF	80'		
6" SHC	LF	30'		
4" SHC	LF	30'		

RESTORATION SCHEDULE (WATER MAIN)	
STATION	RESTORATION
0+00 TO 1+06	PAVING
1+06 TO 2+43	SEED & MULCH

WATER MAIN STAKE OUT TABLE			
STATION	DESCRIPTION	±	DIST
0+00	TS & V	165' 30"	261'
1+00	45° BEND	165' 0"	161'
1+10	45° BEND	162' 30"	155'
2+43	BUTTRESS	135' 0"	25'

ANGLE AND DIST. TAKEN FROM TRAVERSE PT B&A2 SIGHTING TRAVERSE PT 105.



- Sequence of Construction**
- Contact Howard County Bureau of Construction Inspection (313-1880) prior to starting date.
 - Install erosion and sediment control devices as per Section 219 of the Howard County Design Manual Vol. IV.
 - Excavate and install proposed 6" water, 3/4" water house connections and sewer house connections.
 - Restore paving and earth trenches to their original condition as per Howard County Standards.
 - Upon permission from Howard County Sediment Control Inspector, remove Sediment Control Devices.
 - Fine grade all disturbed areas and stabilize with permanent seeding.

- * NOTES:**
- TRENCHES FOR THE CONSTRUCTION OF UTILITIES IS LIMITED TO THREE (3) PIPE LENGTHS OR THAT WHICH CAN BE BACKFILLED AND STABILIZED WITHIN ONE WORKING DAY, WHICHEVER IS SHORTER.
 - SEE APPENDIX SC FOR:
 - a. STANDARD SEDIMENT CONTROL NOTES
 - b. TEMPORARY SEEDING NOTES
 - c. PERMANENT SEEDING NOTES
 - d. STRAW BALE DIKE DETAILS AND CONSTRUCTION SPECS.

By the Developer:
 Signature: *[Signature]* Date: 8/2/94

By the Engineer:
 Signature: *[Signature]* Date: 8-9-94

REVIEWED FOR SOIL CONSERVATION DISTRICT AND MEETS TECHNICAL REQUIREMENTS.
 Patricia Engler, Director of Public Works, 8/2/94

THIS CONSTRUCTION PLAN IS APPROVED FOR SOIL EROSION AND SEDIMENT CONTROL BY THE HOWARD COUNTY CONSERVATION DISTRICT.
 Approved: *[Signature]* 8/22/94

DEPARTMENT OF PUBLIC WORKS
 HOWARD COUNTY, MARYLAND

HOWARD COUNTY
 DEPARTMENT OF PUBLIC WORKS
 BUREAU OF ENGINEERING

Director of Public Works: *[Signature]* 8/2/94
 Chief, Bureau of Engineering: *[Signature]* 8/2/94
 Chief, Bureau of Utilities: *[Signature]* 8-11-94
 Chief, Water and Sewer Design Division: *[Signature]* 8-9-94

DES: ODL					
DRN: AM/BC					
CHK: ODL					
DATE: 6/94	BY: NO	REVISION	DATE	600' SCALE MAP NO. 38	BLOCK NO. 13

VICINITY MAP
 GENERAL NOTES
 PLAN & PROFILE

HARTHORN AVENUE WATER EXTENSION
 CAPITAL PROJECT S-6694
 CONTRACT No. 14-3348

ELECTION DISTRICT No. 1
 HOWARD COUNTY, MARYLAND

SCALE AS SHOWN
 SHEET 1 OF 1